

HST-201

SERVICE MANUAL

*US Model
E Model
Australian Model*



This set is the tuner deck and amplifier section in SEN-201.

Model Name Using Similar Mechanism	New	
Tape Transport Mechanism Type	DECK A	TCM-180-VA-H2
	DECK B	TCM-180-VB-H2

SPECIFICATIONS

AUDIO POWER SPECIFICATIONS

POWER OUTPUT AND TOTAL HARMONIC DISTORTION: With 8 ohm loads both channels driven, from 40–20,000 Hz; rated 100 watts (US model) or 70 watts (E, Australian model) per channel minimum RMS power, with no more than 0.9% total harmonic distortion from 250 milliwatts to rated output.

Amplifier

Input

	Sensitivity	Impedance
PHONO	2.5 mV	50 kilohms
CD AUX/VIDEO	250 mV	50 kilohms

Output

SPEAKER: Accepts speakers of 8 to 16 ohms
HEADPHONES: Accepts headphones with low and high impedance

Frequency response PHONO: RIAA curve
CD, AUX/VIDEO: 10 Hz–70 kHz±3 dB

GRAPHIC EQUALIZER control

Boost/cut range:
±8 dB (100 Hz, 330 Hz, 1 kHz, 3.3 kHz)
±6 dB (10 kHz)

Tuner

System

FM stereo, FM/AM superheterodyne tuner
Quartz-locked digital synthesizer system


FM tuner section

Tuning range 87.5–108 MHz
Antenna terminals 75 ohms unbalanced
Intermediate frequency 10.7 MHz
Sensitivity at 50 dB quieting
22.1 dBf, 7 μV (mono), 42.1 dBf, 70 μV (stereo)
Usable sensitivity 19.5 dBf, 5 μV (IHF)
Signal-to-noise ratio (at 75 kHz deviation)
80 dB (mono), 75 dB (stereo)
Harmonic distortion 0.3% (mono), 0.5% (stereo) at 1 kHz
Separation 40 dB at 1 kHz
Selectivity 55 dB at 400 kHz

AM tuner section

Tuning range US model: 530–1,710 kHz
E, Australian model: 531 kHz–1,602 kHz
Antenna AM loop antenna, external antenna terminal
Intermediate frequency 450 kHz
Usable sensitivity US model:
AM loop antenna: 500 μV/m (1,000 kHz)
E, Australian model:
AM loop antenna: 500 μV/m (999 kHz)
Signal-to-noise ratio 54 dB (mono, normal)

— Continued on page 2 —

Dolby noise reduction manufactured under license from
Dolby Laboratories Licensing Corporation.
“DOLBY” and the double-D symbol  are trademarks of
Dolby Laboratories Licensing Corporation.

STEREO COMPONENT SYSTEM
SONY®

SECTION 1
GENERAL

Harmonic distortion 0.5% (mono, normal)
 Selectivity US model: 38 dB (10 kHz, normal)
 E, Australian model: 32 dB (9 kHz, normal)

Tape Deck

Recording system 4-track 2-channel stereo
 Frequency response DOLBY NR OFF
 With TYPE II cassette (Sony UCX-S)
 30-14,000 Hz (±3 dB)
 With TYPE I cassette (Sony HF-S)
 30-13,000 Hz (±3 dB)
 Wow and flutter 0.12% WRMS (NAB)

General

Power requirements US model: 120 V AC, 60 Hz
 Australian model: 240 V AC, 50 Hz
 E model: 120, 220 or 240V AC, 50/60Hz
 Power consumption US model: 175 W
 E, Australian model: 145 W
 Dimensions Approx. 430 × 330 × 295 mm (w/h/d)
 (17 × 12⁷/₈ × 11⁵/₈ inches)
 Weight Approx. 9.2 kg (20 lb 5 oz) net
 Accessories supplied
 AM loop antenna (1)
 FM wire antenna (1)
 45-rpm adaptor (1)
 RM-S190 Remote commander (1)
 Sony SUM-3 (NS) batteries (2)

Design and specifications subject to change without notice.

TABLE OF CONTENTS

Section	Title	Page
Specifications		1
1.	GENERAL	2
2.	ADJUSTMENTS	
2-1.	Mechanical Adjustments	4
2-2.	Electrical Adjustments	4
3.	DIAGRAMS	
3-1.	IC Block Diagrams	8
3-2.	Printed Wiring Boards	10
3-3.	Schematic Diagram	15
4.	EXPLODED VIEWS	21
5.	ELECTRICAL PARTS LIST	26

ATTENTION :

See page 9 for SAFETY CHECK OUT.

SAFETY-RELATED COMPONENT WARNING!!

COMPONENTS IDENTIFIED BY MARK **⚠** OR DOTTED LINE WITH MARK **⚠** ON THE SCHEMATIC DIAGRAMS AND IN THE PARTS LIST ARE CRITICAL TO SAFE OPERATION. REPLACE THESE COMPONENTS WITH SONY PARTS WHOSE PART NUMBERS APPEAR AS SHOWN IN THIS MANUAL OR IN SUPPLEMENTS PUBLISHED BY SONY.

For details on operation, refer to "More information" below.

Tuning in Automatically (Before reception, be sure to connect the supplied AM and FM antennas)

• TUNER section

Note
 When the interval is changed, all stored stations will be erased from the memory. After changing the interval, be sure to store the stations again.

To change the AM tuning interval
 The AM tuning interval is preset at the factory to 10 kHz for the U.S.A. model, and to 9 kHz for the Australian country. To change the frequency allocation system of your country. To change the interval, proceed as follows.
 1 Press the POWER switch to turn on the unit.
 2 Set the BAND FM/AM selector to AM.
 3 Press the POWER switch to turn off the unit.
 4 While pressing the TUNING + button, press the POWER switch to turn on the unit. To reset the interval, follow the same procedure.

Storing Station Frequencies into Memory (You can memorize up to 25 AM and MW stations in any sequence.)

1 Tune in a desired station.

2 While the MEMORY indicator is lit, select a number (1 to 25).

3 While the MEMORY indicator is lit, select a number (1 to 25).

4 The selected station is stored to the specified number.

ENTER

For details on operation, refer to "More information" below.

• DECK section

Playing Back Tapes (on either Deck A or B)

For details on operation, refer to "More information" below.

1 Select source.

2 Select the DOLBY NR setting.

3 Select the tape type.

4 Select the DOLBY NR setting.

5 When the tape ends, the unit will automatically shut off. To stop playback, press **II**. To resume playback, press **II** again.

Recording on Tape (Deck B)

For details on operation, refer to "More information" below.

1 Select source.

2 Select the DOLBY NR setting.

3 Select the tape type.

4 Select the DOLBY NR setting.

5 Press both buttons together.

6 Press both buttons together.

7 To stop recording, press **DECK B**.

SECTION 2 ADJUSTMENTS

2-1. MECHANICAL ADJUSTMENTS

PRECAUTION

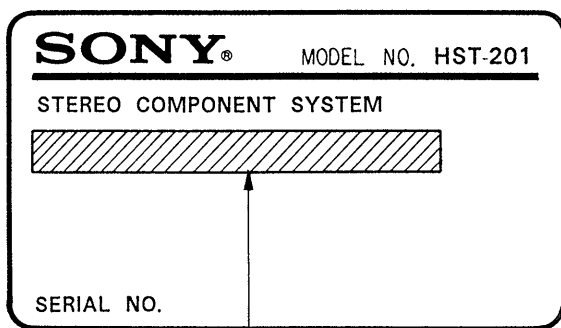
1. Clean the following parts with a denatured-alcohol-moistened swab :

record/playback head	pinch roller
erase head	rubber belts
capstan	idler
2. Demagnetize the record/playback head with a head demagnetizer.
3. Do not use a magnetized screwdriver for the adjustments.
4. After the adjustments, apply suitable locking compound to the parts adjusted.
5. The adjustments should be performed in the rated power supply voltage unless otherwise noted.

Torque Measurement

Torque	Torque meter	Meter reading
FWD	CQ-102C	35 to 60 g · cm (0.49 to 0.83 oz · inch)
FWD Back tension	CQ-102C	2.5 to 4.5 g · cm (0.03 to 0.06 oz · inch)
FF, REW	CQ201B	75 to 150 g · cm (1.04 to 2.08 oz · inch)

• MODEL IDENTIFICATION



US Model : AC : 120V 60Hz 175W
 E Model : AC : 120/220/240V~50/60Hz 145W
 Australian Model : AC : 240V · 50/60Hz 145W

2-2. ELECTRICAL ADJUSTMENTS

CASSETTE DECK SECTION

Note : The adjustment should be performed in the order given in the service manual. As a rule, adjustment about playback should be performed before adjustment about recording.

The adjustments should be performed for both L-CH and R-CH.

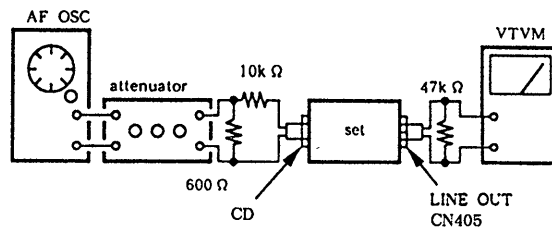
- Switches and controls should be set as follows unless otherwise specified.

DOLBY NR switch : OFF
 TAPE SELECT switch : TYPE I

- Standard Record :

Deliver the standard input signal level to the input jack and set the REC LEVEL control to obtain the standard output signal level.

-Record Mode-



Standard Input Level

input terminal	LINE IN
source impedance	10k Ω
input level	0.25V (-10dB)

Standard Output Level

output terminal	LINE OUT
load impedance	47k Ω
output level	0.44V (-5dB)

Test tape

Type	Signal	Used for
P-4-A100	10kHz, -10dB	Azimuth Adjustment
P-4-L300	315Hz, 0dB	PB Level Adjustment
WS-48B	3kHz, 0dB	Tape Speed Adjustment

Record/Playback Head Azimuth Adjustment

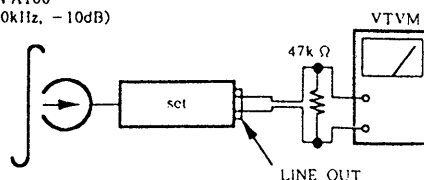
DECK A

DECK B

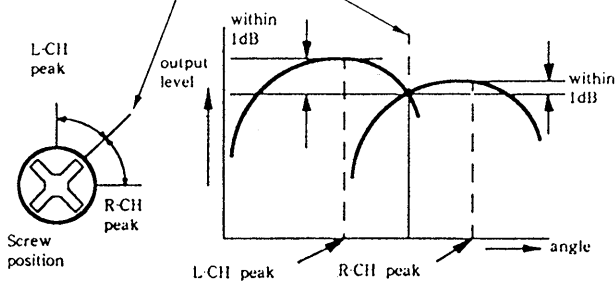
Procedure :

1. Mode : FWD playback

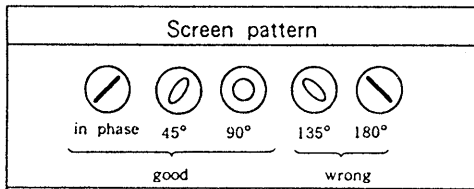
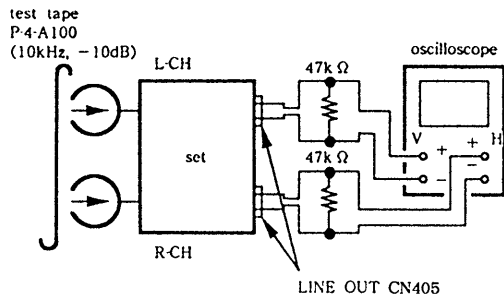
test tape
 P-4 A100
 (10kHz, -10dB)



- Turn the adjustment screw for the maximum output levels. If these levels do not match, turn the adjustment screw until both of output levels match together within 1dB.

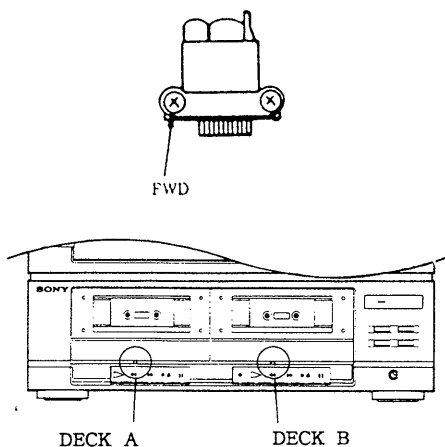


- Phase Check
Mode : playback



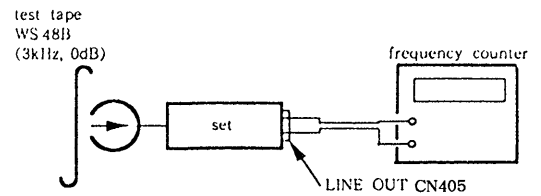
- Set in the REV mode and repeat the step 1-3.
- After the adjustment, lock the screws with locking compound.

Adjustment Location : Record/Playback head.



Tape Speed Adjustment DECK A DECK B

- Procedure :
Mode : playback



Perform high speed adjustment before normal speed adjustment

(high speed adjustment)

- Set to playback mode.
- Short test pin CN407 on amplifier board.
- Keep on pressing the HIGH SPEED DUBBING switch.
- Adjust the soldering iron (H) RV504 (DECK A) RV506 (DECK B) so that the frequency counter reading becomes $6000 \pm 20\text{Hz}$.
- After adjustment, disconnect CN407 shorted in step 1.

(normal speed adjustment)

- Set to playback mode.
- Adjust the soldering iron (L) RV505 (DECK A) RV507 (DECK B) so that the frequency counter reading becomes $3000 \pm 10\text{Hz}$.

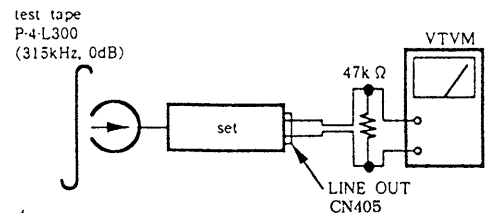
Frequency difference between the beginning and the end of the tape should be within 3%.

Frequency difference between deck A and deck B the beginning of the tape should be within 1.5%.

Adjustment Location : AMPLIFIER board (See page 7)

Playback Level Adjustment DECK A DECK B

- Procedure :
Mode : playback



Adjust

- DECK A: RV400 (L-CH), RV500 (R-CH)
DECK B: RV401 (L-CH), RV501 (R-CH)

so that the reading on VTVM meets the adjustment limits below.

Adjustment Limits :

LINE OUT level : $-15 \pm 0.5\text{dB}$

Level difference between channels : less than 0.5dB

Check that the LINE OUT level does not change in playback mode while changing the mode from playback to stop several times.

Adjustment Location : AMPLIFIER board (See page 7)

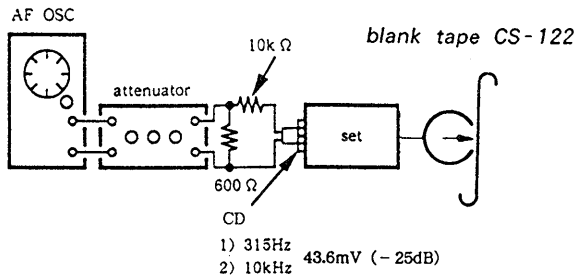
Record Bias Adjustment DECK B

Setting :

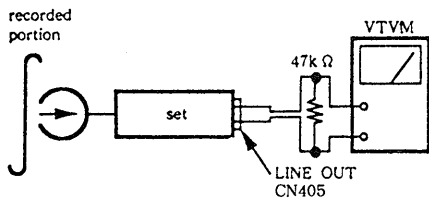
REC LEVEL control : Standard Record (See page 4.)
test pin CN407 : short

Procedure :

1. Mode : record



2. Mode : playback



Playback the signal recorded in step 1.

Confirm that the 10kHz playback output is $0 \pm 0.5\text{dB}$ relative to the 315Hz output. If necessary, adjust RV403 (L-CH), RV503 (R-CH) and repeat the steps given above.

Adjustment Location : AMPLIFIER board (See page 7)

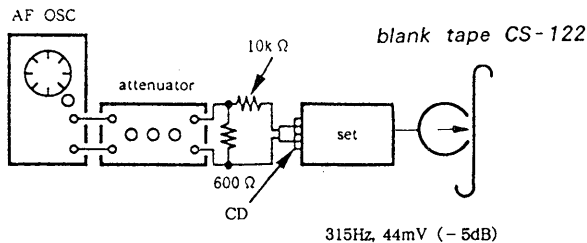
Record Level Adjustment DECK B

Setting :

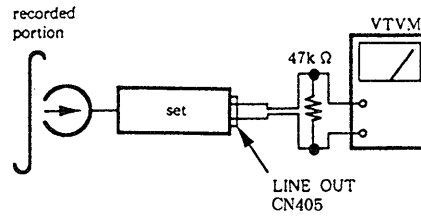
REC LEVEL control : Standard Record (See page 4.)
test pin CN407 : short

Procedure :

1. Mode : record



2. Mode : playback



3. Playback the signal recorded in step 1.

Confirm that the signal level is within the adjustment limits below. If necessary, adjust RV402 (L-CH), RV502 (R-CH) and repeat the step 1-2.

Adjustment Limits : $-26 \pm 0.5\text{dB}$

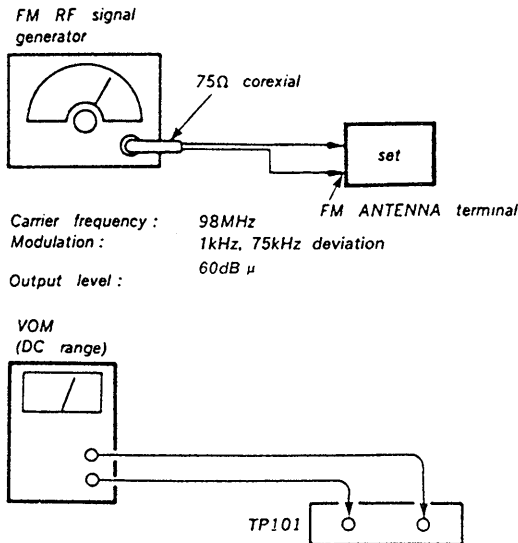
Adjustment Location : AMPLIFIER board (See page 7)

TUNER SECTION

1. FM SECTION ADJUSTMENT

FM Discriminator Alignment (NULL Check)

Setting:



Procedure :

1. Push the TUNING (+,-) button for 98 MHz.
2. Adjust T100 for 0V reading on the VOM.

Note: FM tuned indication lighting level adjustment should be made after FM discriminator alignment.

Adjustment Location : AMPLIFIER board

FM Tuned Indication Lighting Level Adjustment

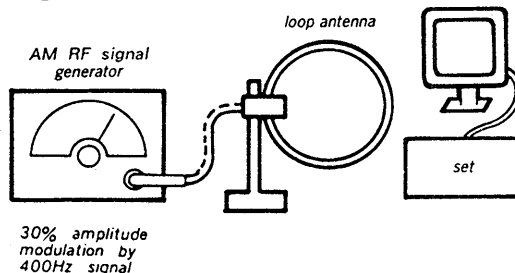
BAND select switch: FM

1. Output 25dB μ, 98MHz from FM RF signal generator.
2. Adjust RV101 so that the LCD **TUNED** light up.

Adjustment Location : AMPLIFIER board

2. AM SECTION ADJUSTMENT

Setting:



AM Tuned Indication Lighting Level Adjustment

Band select switch : AM

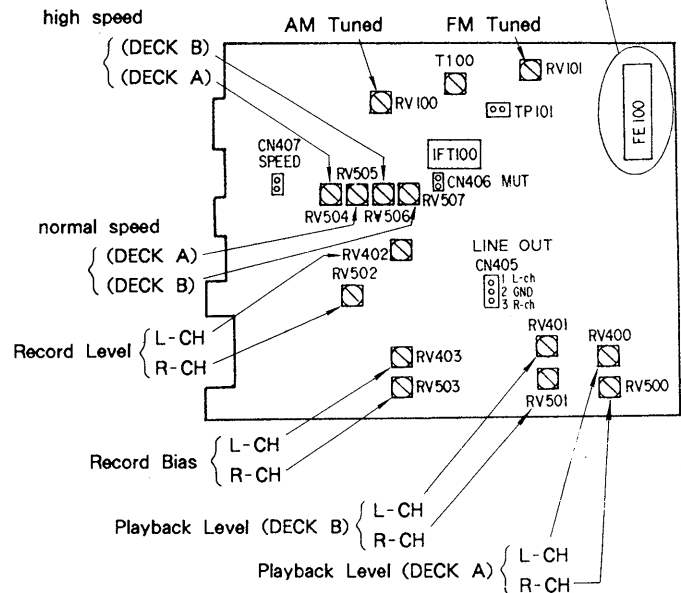
1. Output 63dB μ, 1,050kHz (US model), 999kHz (E, Australian model) from AM RF signal generator.
2. Adjust RV100 so that the LCD **TUNED** light up.

Adjustment Location : AMPLIFIER board

Adjustment Location :

AMPLIFIER board (Component side)

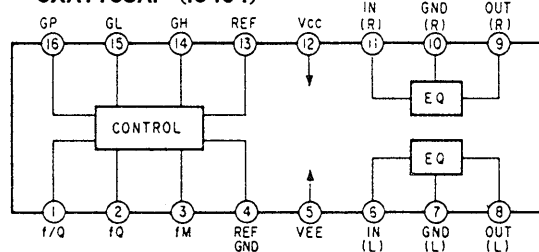
The FM front-end is carefully adjusted at the factory end is supplied as one whole block for replacement.



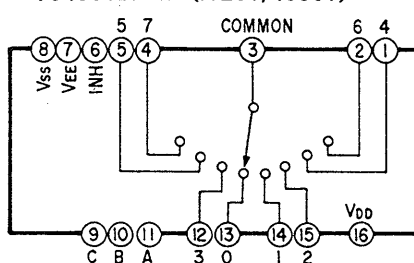
SECTION 3 DIAGRAMS

3-1. IC BLOCK DIAGRAMS

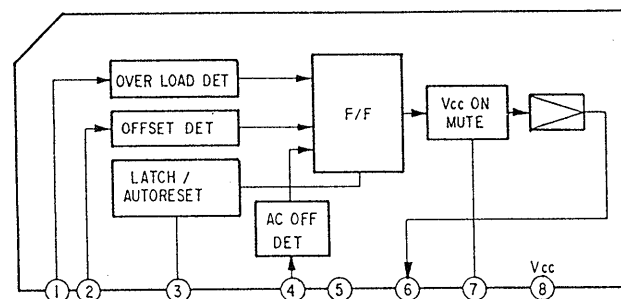
• CXA1198AP (IC404)



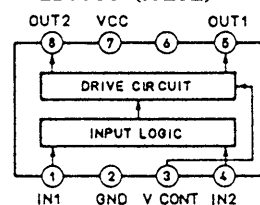
• TC4051BPMB (IC201, IC301)



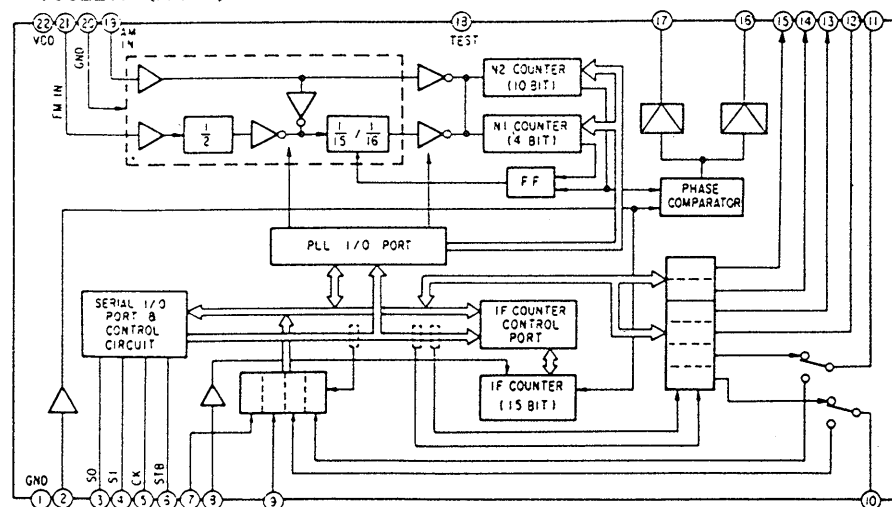
• μ PC1237HA (IC701)



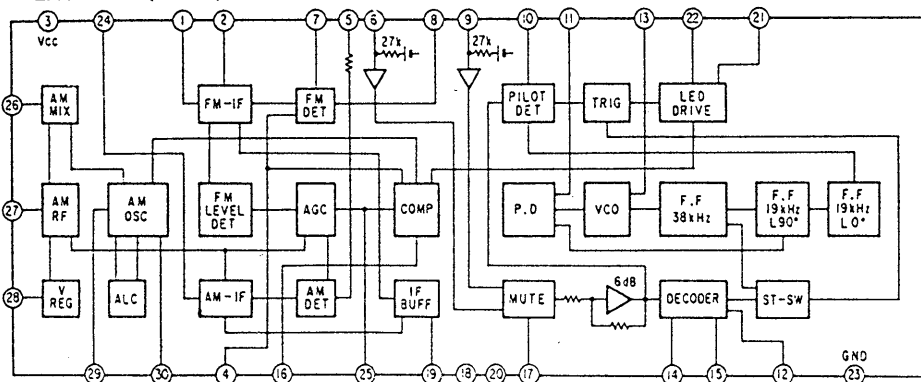
• LB1639 (IC202)



• TC9227P (IC100)



• LA1851N (IC101)



SAFETY CHECK-OUT (US Model)

After correcting the original service problem, perform the following safety check before releasing the set to the customer:

Check the antenna terminals, metal trim, "metallized" knobs, screws, and all other exposed metal parts for AC leakage. Check leakage as described below.

LEAKAGE TEST

The AC leakage from any exposed metal part to earth ground and from all exposed metal parts to any exposed metal part having a return to chassis, must not exceed 0.5 mA (500 microamperes). Leakage current can be measured by any one of three methods.

1. A commercial leakage tester, such as the Simpson 229 or RCA WT-540A. Follow the manufacturers' instructions to use these instruments.
2. A battery-operated AC milliammeter. The Data Precision 245 digital multimeter is suitable for this job.
3. Measuring the voltage drop across a resistor by means of a VOM or battery-operated AC voltmeter. The "limit" indication is 0.75 V, so analog meters must have an accurate low-voltage scale. The Simpson 250 and Sanwa SH-63Trd are examples of a passive VOM that is suitable. Nearly all battery operated digital multimeters that have a 2V AC range are suitable. (See Fig. A)

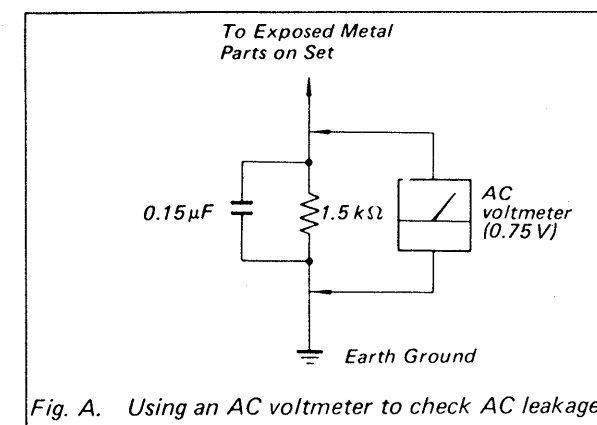


Fig. A. Using an AC voltmeter to check AC leakage.

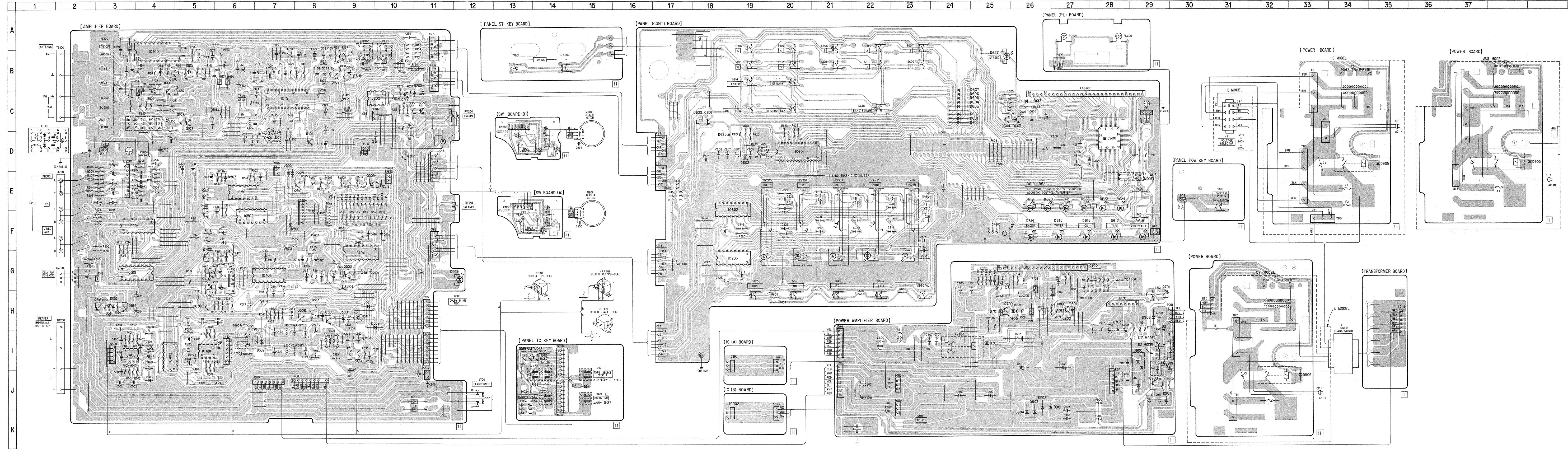
• Semiconductor Location

Ref. No.	Location	Ref. No.	Location
D170	B-10	IC301	G-3
D200	C-10	IC303	E-18
D500	H-9	IC400	I-3
D501	H-9	IC401	I-5
D502	I-7	IC402	I-4
D503	E-6	IC403	G-7
D504	E-7	IC404	G-9
D505	E-7	IC501	E-6
D506	F-7	IC502	F-6
D508	G-12	IC600	D-28
D509	H-10	IC601	D-20
D510	H-3	IC700	G-26
D511	H-3	IC701	H-28
D512	J-15	IC900	I-29
D600	C-24	IC901	I-18
D601	C-24	IC902	K-18
D602	C-24	Q100	B-4
D603	C-24	Q102	C-5
D604	C-24	Q103	C-5
D605	C-24	Q104	D-8
D606	C-24	Q105	B-5
D607	E-28	Q106	B-4
D609	E-28	Q107	B-9
D610	E-28	Q108	B-9
D613	C-26	Q200	C-10
D614	F-27	Q201	C-10
D615	F-27	Q202	D-10
D617	F-28	Q301	C-11
D618	F-29	Q400	G-5
D619	E-26	Q401	F-5
D620	E-26	Q402	G-5
D621	E-27	Q403	F-9
D622	E-27	Q500	H-5
D623	E-28	Q502	G-5
D624	E-28	Q503	G-9
D625	D-18	Q504	I-9
D627	B-25	Q505	I-9
D700	H-26	Q506	H-8
D701	H-25	Q507	H-9
D702	I-25	Q508	H-8
D703	H-28	Q509	E-9
D800	H-27	Q510	E-8
D801	H-27	Q511	E-5
D900	J-29	Q512	E-10
D901	K-26	Q515	H-3
D902	K-26	Q516	H-3
D903	K-26	Q517	I-13
D904	K-26	Q518	I-13
D905	J-33	Q519	I-14
D905	D-35	Q600	C-18
D905	D-39	Q601	C-18
D906	H-29	Q602	D-19
D907	J-29	Q603	C-26
		Q604	C-25
IC100	B-4	Q700	H-25
IC101	C-7	Q701	H-29
IC200	E-3	Q800	H-27
IC201	F-3	Q900	J-29
IC202	C-10	Q901	J-29
IC203	G-18		

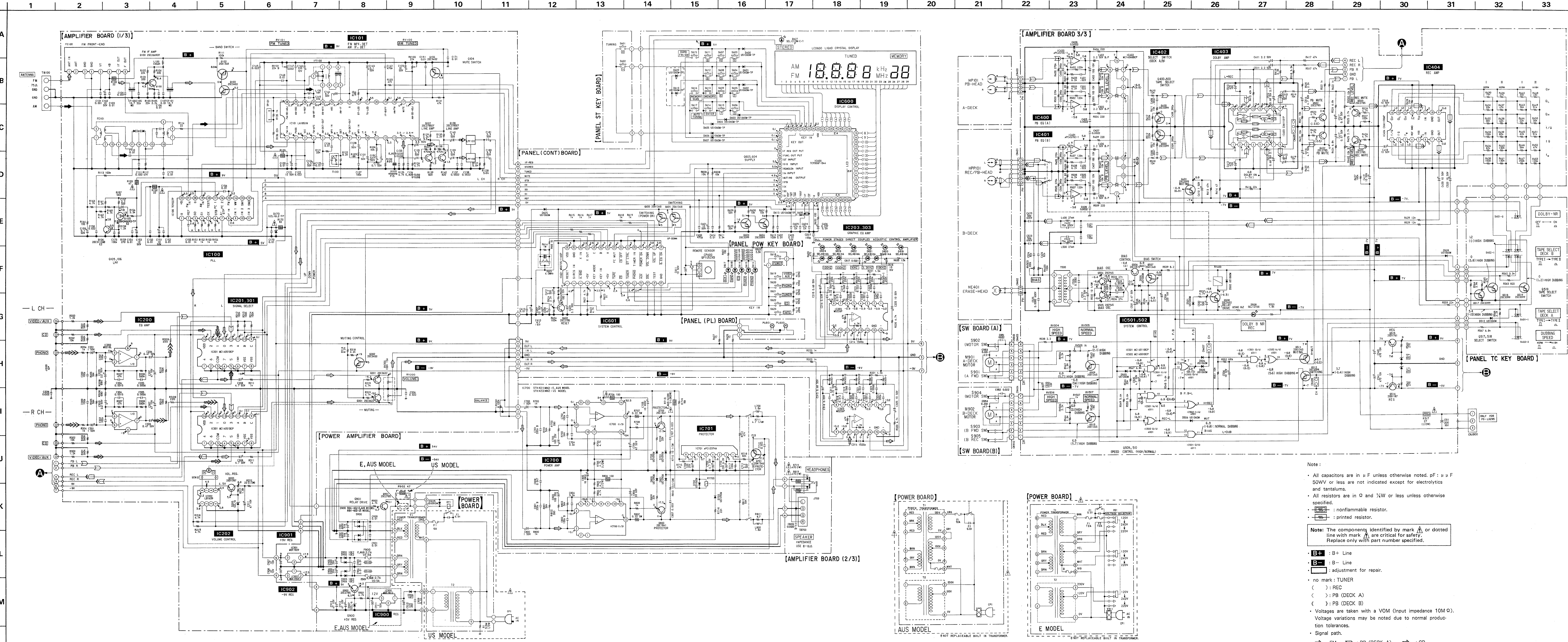
Note:
 ■ : parts mounted on the conductor side.
 □ : indicates side identified with part number.
 AUS: Australian

3-2. PRINTED WIRING BOARDS

• Refer to page 21 for Circuit Boards Location.
 • Refer to page 22 for Semiconductor Lead Layouts.



3-3. SCHEMATIC DIAGRAM



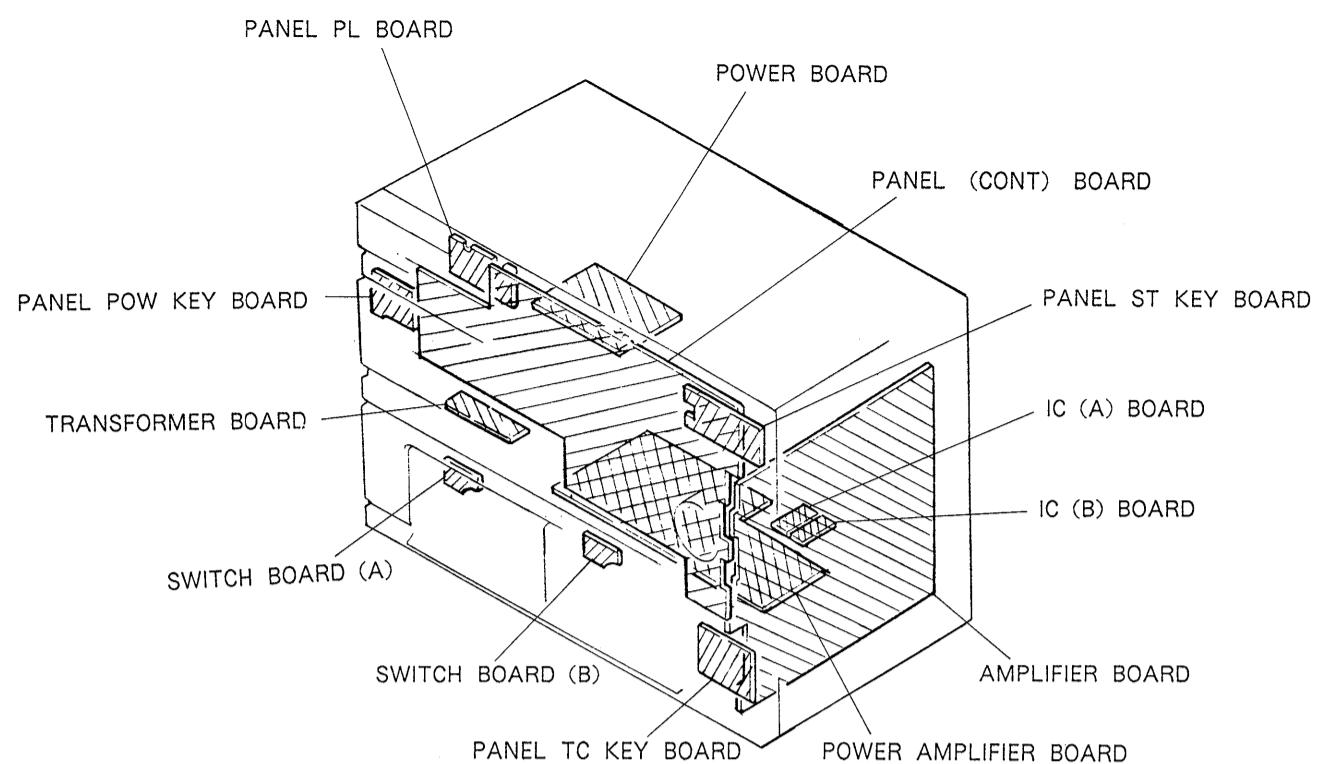
Note:

- All capacitors are in μF unless otherwise noted; pF: μF 50V or less are not indicated except for electrolytics and tantalums.
- All resistors are in Ω and $\frac{1}{2}W$ or less unless otherwise specified.
- : nonflammable resistor.
- : printed resistor.

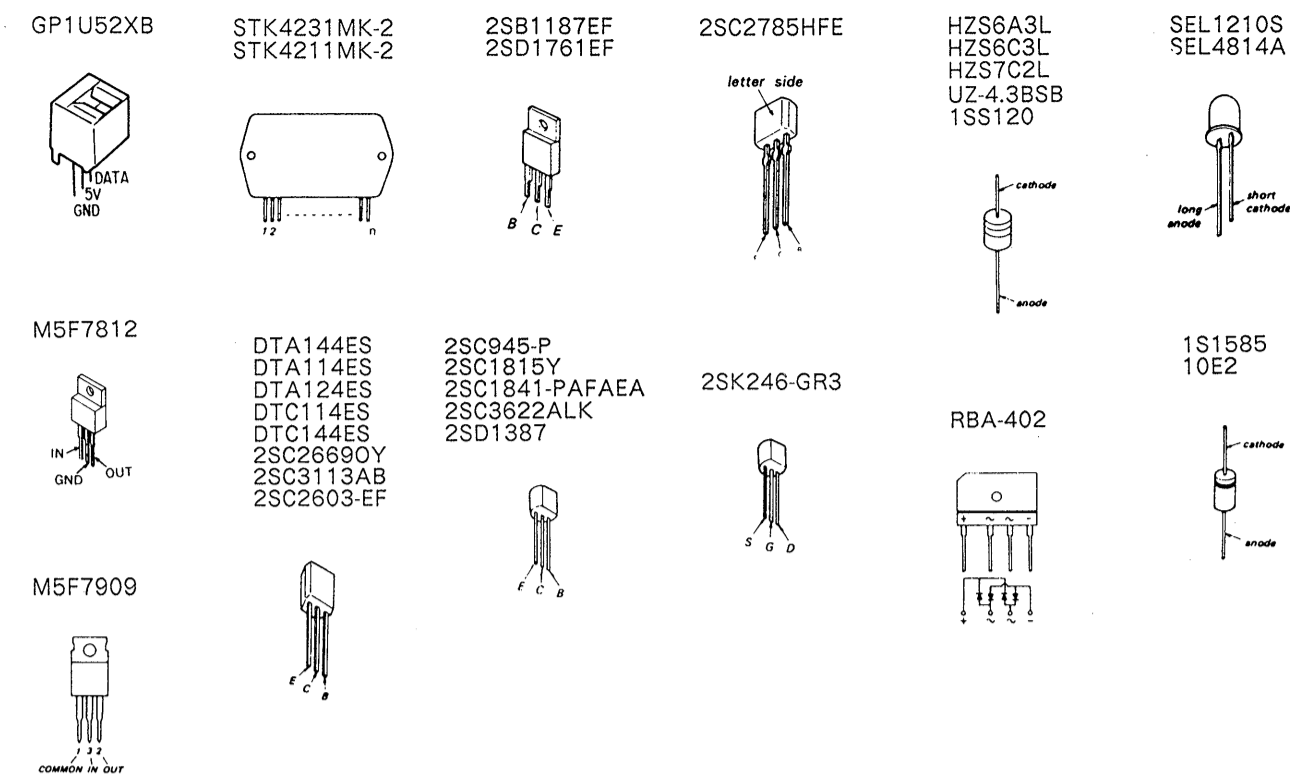
Note: The components identified with mark or dotted line with mark are critical for safety. Replace only with part number specified.

- : B+ Line
- : B- Line
- : adjustment for repair.
- no mark: TUNER
- () : REC
- < > : PB (DECK A)
- () : PB (DECK B)
- Voltagess are taken with a VOM (input impedance 10M Ω). Voltage variations may be noted due to normal production tolerances.
- Signal path:
 - : FM
 - : PB (DECK A)
 - : CD
 - : AM
 - : PB (DECK B)
 - : VIDEO/AUX
 - : REC (DECK B)
 - : PHONO
- AUS: Australian

• CIRCUIT BOARDS LOCATION



• Semiconductor Lead Layouts



SECTION 4
EXPLODED VIEWS

NOTE:

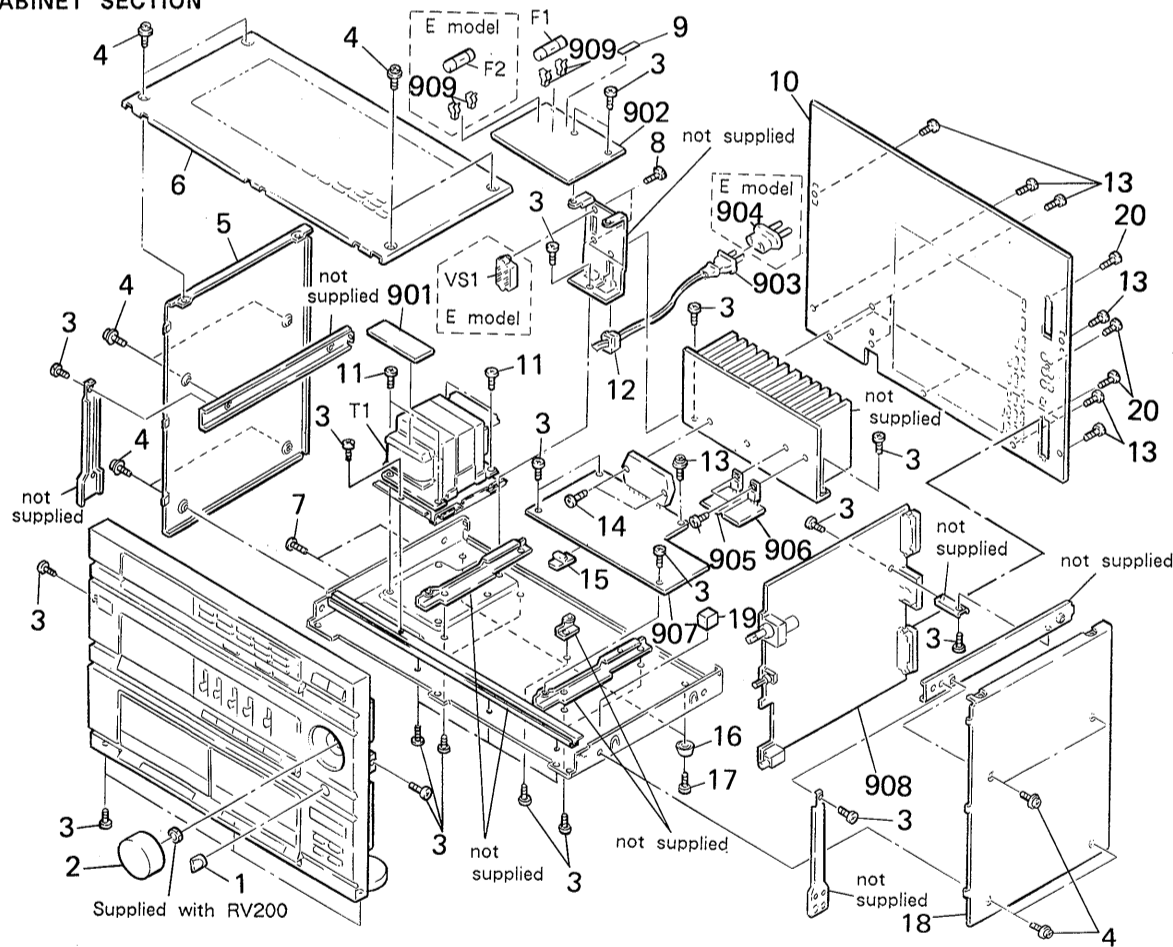
- The mechanical parts with no reference number in the exploded views are not supplied.
- The construction parts of an assembled part are indicated with a collation number in the remark column.
- Items marked "*" are not stocked since they are seldom required for routine service. Some delay should be anticipated when ordering these items.

- Due to standardization, parts with part number suffix -XX and -X may be different from the parts specified in the components used on the set.
- Color Indication of Appearance Parts
Example:
(RED) ... KNOB, BALANCE (WHITE)
↑ Cabinet's Color ↑ Parts Color

The components identified by mark or dotted line with mark are critical for safety. Replace only with part number specified.

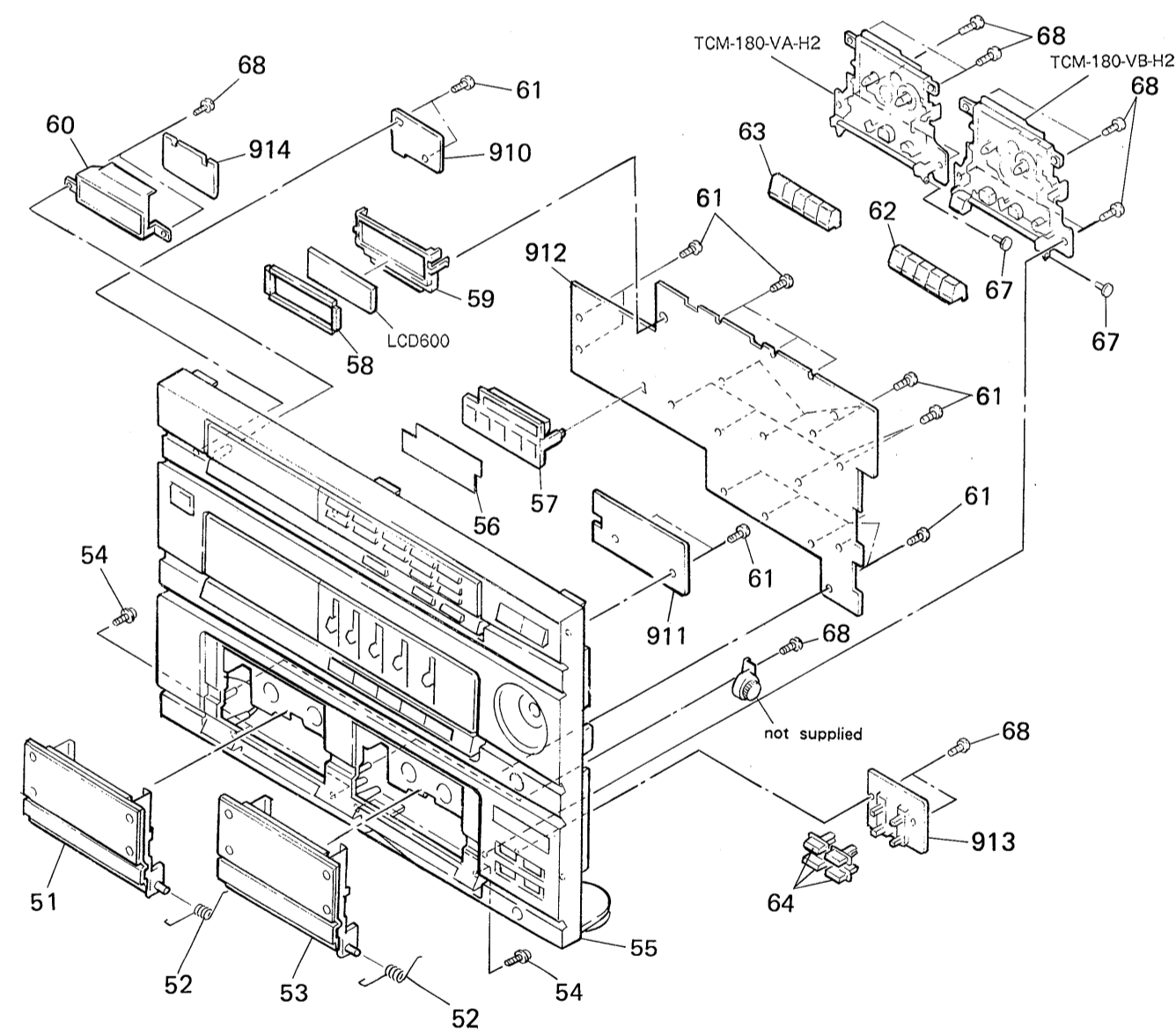
• AUS: Australian

4.1. CABINET SECTION



No.	Part No.	Description	Remarks	No.	Part No.	Description	Remarks
1	4-908-097-21	KNOB		901	*1-632-621-11	PC BOARD, TRANSFORMER	
2	4-929-288-22	KNOB (VOL 47)		902	*1-632-527-11	PC BOARD, POWER	
3	7-682-547-04	SCREW +BVTT 3X6 (S)		903	△1-555-648-11 (AUS)...CORD, POWER		
4	3-704-366-01	SCREW (CASE) (M3X8)			△1-574-581-11 (US)...CORD, POWER		
5	4-931-199-01	CASE (SIDE LEFT)			△1-574-902-11 (E)...CORD, POWER		
6	4-934-602-01	CASE (TOP)		904	△1-526-565-00 (E)...AC PLUG ADAPTOR		
7	4-934-611-01	SCREW (3X6)(S TIGHT),TAP TIGHT		905	*1-632-522-11	PC BOARD, IC (A)	
8	7-685-647-79	SCREW +BVTP 3X10 TYPE2 IT-3		906	*1-632-523-11	PC BOARD, IC (B)	
9	3-701-947-15 (AUS)...LABEL (T2.5A), FUSE			907	*A-4334-582-A (US)...MOUNTED PCB, POWER AMPLIFIER		
	3-701-948-17 (E)...LABEL (T2A), FUSE				*A-4334-584-A (E,AUS)...MOUNTED PCB, POWER AMPLIFIER		
10	*4-934-603-21 (US)...PANEL, BACK			908	*A-4334-585-A (US)...MOUNTED PCB, AMPLIFIER		
	*4-934-603-31 (E)...PANEL, BACK				*A-4334-587-A (E,AUS)...MOUNTED PCB, AMPLIFIER		
	*4-934-603-41 (AUS)...PANEL, BACK			909	*1-533-213-31	HOLDER, FUSE	
11	7-682-561-04	SCREW +BVTT 4X8 (S)		F1	△1-532-388-51 (E)...FUSE (2.0A)		
12	*3-703-244-00 (US,AUS)...BUSHING (2104), CORD			F1	△1-532-286-00 (AUS)...FUSE TIME-LAG (2.5A)		
	*3-703-571-00 (E)...BUSHING (S)(4516), CORD			F1	△1-576-110-11 (US)...FUSE (6.0A)		
13	3-704-504-11	SCREW, +PTT WH M3X8 S TIGHT		F2	△1-532-388-51 (E)...FUSE (2.0A)		
14	7-685-650-79	SCREW +BVTP 3X16 TYPE2 IT-3		T1	△1-449-994-11 (US)...TRANSFORMER, POWER		
15	*3-641-308-00	RETAINER, PC BOARD		T1	△1-449-995-11 (AUS)...TRANSFORMER, POWER		
16	4-927-849-01	FOOT		T1	△1-450-137-11 (E)...TRANSFORMER, POWER		
17	7-682-550-04	SCREW +BVTT 3X12 (S)					
18	4-934-601-01	CASE (SIDE RIGHT)					
19	*4-931-121-11	CUSHION (TR)					
20	7-685-647-79	SCREW +BVTP 3X10 TYPE2 N-S					

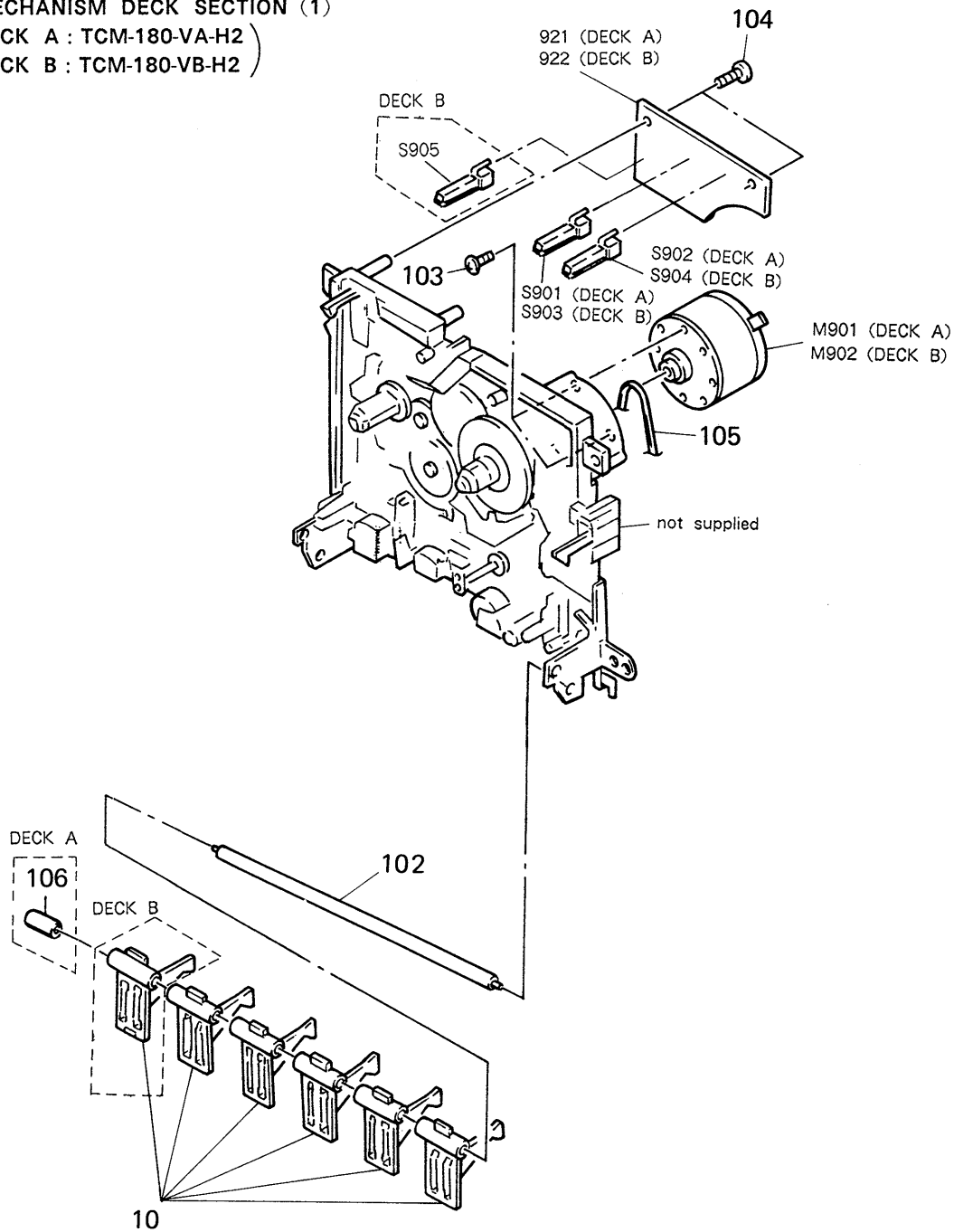
4.2. FRONT PANEL SECTION



No.	Part No.	Description	Remarks	No.	Part No.	Description	Remarks
51	X-4915-491-1	LID (A) ASSY, CASSETTE		64	4-924-901-01	BUTTON (M)	
52	4-931-185-01	SPRING (LOADING)		68	4-928-635-21	SCREW, +BV (2.6X10) TAPPING	
53	X-4915-492-1	LID (B) ASSY, CASSETTE		910	*1-632-521-11	PC BOARD, PANEL POW KEY	
54	4-934-644-31	SCREW (+PTPWH M2.6X12)		911	*1-632-520-11	PC BOARD, PANEL ST KEY	
55	X-4918-002-1	PANEL ASSY, FRONT		912	*A-4334-571-A (US)...MOUNTED PCB, PANEL CONT		
56	*4-931-184-01	ILLUMINATOR			*A-4334-573-A (E,AUS)...MOUNTED PCB, PANEL CONT		
57	4-931-193-01	HOUSE, LED		913	*1-632-526-11	PC BOARD, PANEL TC KEY	
59	*4-919-709-01	ILLUMINATOR		914	*1-632-528-11	PC BOARD, PANEL PL	
60	*4-919-710-01	HOUSE, LAMP			LC600 1-807-842-11	DISPLAY PANEL, LIQUID CRYSTAL	
61	4-928-635-01	SCREW, +BV (2.6X8) TAPPING					
62	4-934-637-11	BUTTON (B) (DECK B)					
63	4-934-637-01	BUTTON (B) (DECK A)					

4-3. MECHANISM DECK SECTION (1)

(DECK A : TCM-180-VA-H2)
(DECK B : TCM-180-VB-H2)

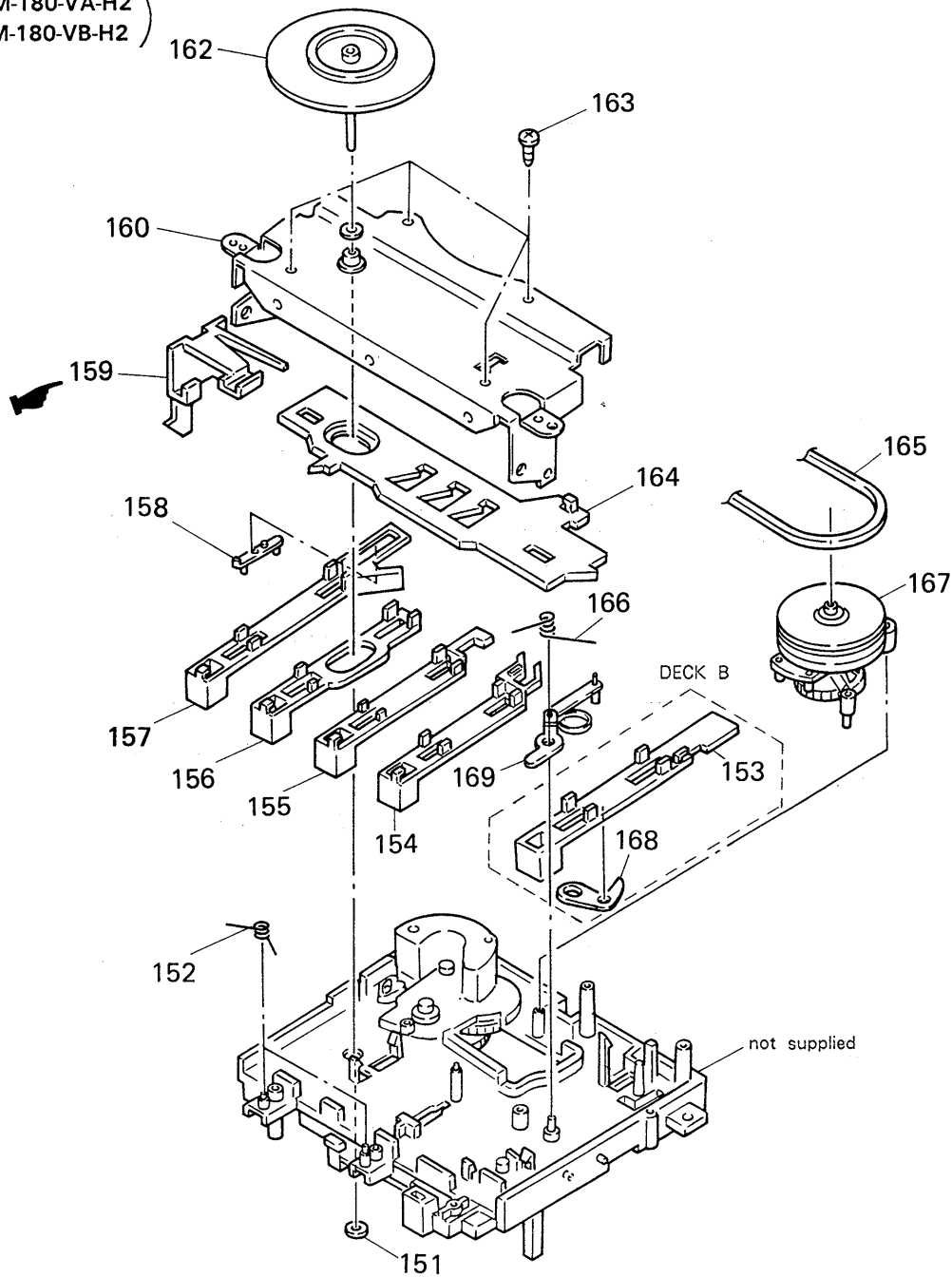


No.	Part No.	Description	Remarks	No.	Part No.	Description	Remarks
101	3-358-268-01	LEVER (BUTTON BASE B)		M901	X-3358-212-1	(DECK A)...MOTOR (B) ASSY	
102	3-358-242-01	SHAFT (BUTTON SHAFT)		M902	X-3358-212-1	(DECK B)...MOTOR (B) ASSY	
103	7-621-775-20	SCREW +B 2.6X5		S901	1-571-736-11	SWITCH, LEAF (FWD SW)	
104	7-685-133-19	SCREW +BTP 2.6X6 TYPE2 N-S		S902	1-571-736-11	SWITCH, LEAF (MOTOR SW)	
105	3-358-272-01	BELT (A2)		S903	1-571-736-11	SWITCH, LEAF (FWD SW)	
106	*3-358-216-01	(DECK A)...COLLAR		S904	1-571-736-11	SWITCH, LEAF (MOTOR SW)	
921	*1-635-158-11	PC BOARD (A), SW		S905	1-571-736-11	SWITCH, LEAF (REC SW)	
922	*1-635-158-11	PC BOARD (B), SW					

REVISED

4-4. MECHANISM DECK SECTION (2)

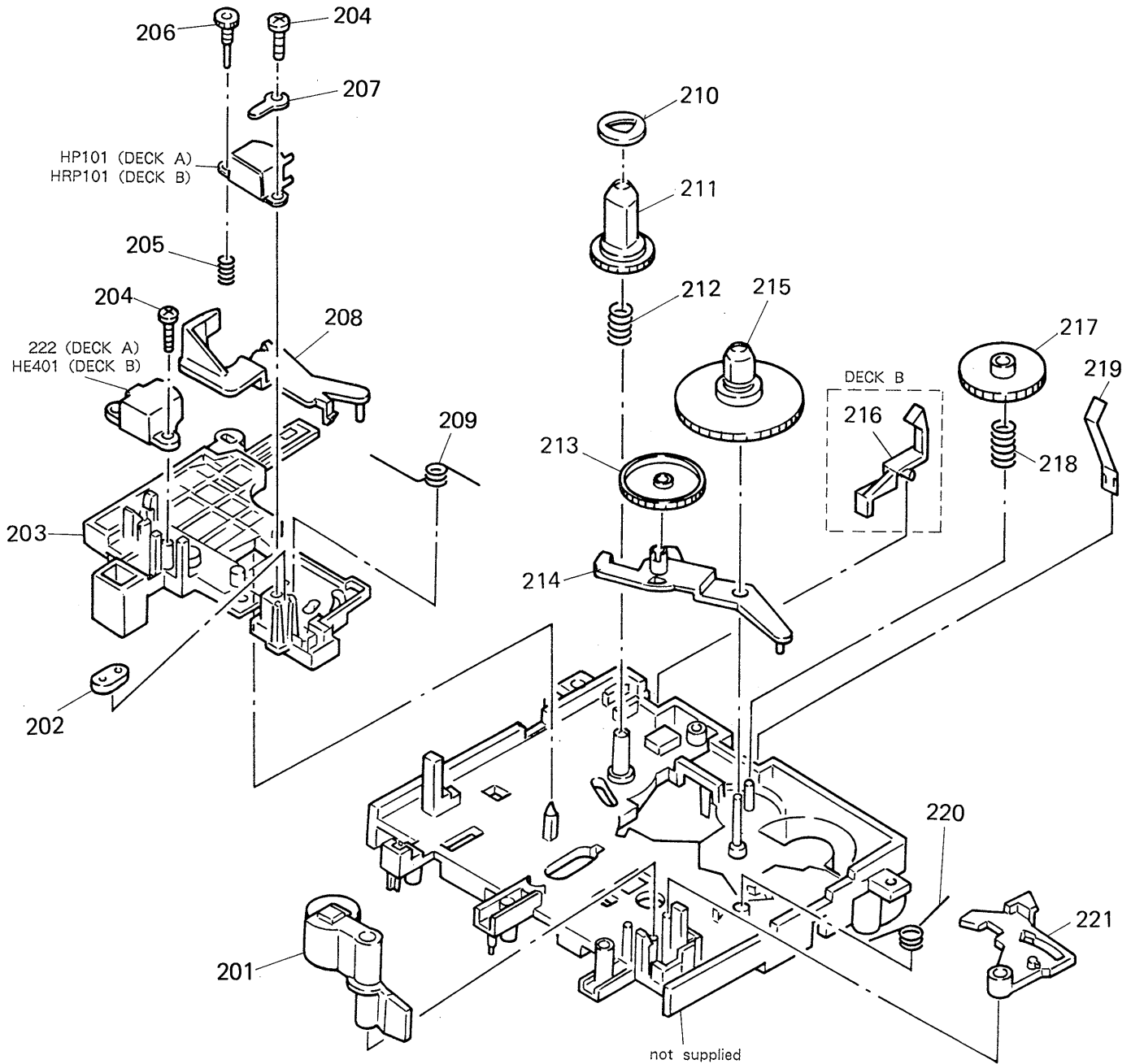
(DECK A : TCM-180-VA-H2)
(DECK B : TCM-180-VB-H2)



No.	Part No.	Description	Remarks	No.	Part No.	Description	Remarks
151	7-623-921-01	WASHER 1.7, NYLONE		161	3-701-437-01	WASHER	
152	3-358-232-01	SPRING (S-P F-R), TORSION		162	X-3358-205-1	FLYWHEEL (A) ASSY	
153	3-358-259-01	(DECK B)...SLIDER (REC)		163	7-685-133-19	SCREW +P 2.6X6 TYPE1	
154	3-358-258-01	SLIDER (REW)		164	*3-358-249-01	SLIDER (LOCK PLATE)	
155	3-358-257-01	SLIDER (FF)		165	3-358-230-01	BELT (A1)	
156	3-358-256-01	SLIDER (STOP/EJECT)		166	3-358-214-01	(DECK A)...SPRING (LOCK), TORSION	
157	3-358-260-01	SLIDER (PAUSE)			3-358-233-01	(DECK B)...SPRING (REC-LOCK), TORSION	
158	*3-358-226-01	LEVER (PAUSE LEVER)		167	X-3358-202-1	LEVER (FR ARM) ASSY	
159	*3-358-261-01	SLIDER (HOLDER LOCK)		168	X-3358-204-1	(DECK B)...LEVER (PINCH LEVER) ASSY	
160	*X-3358-210-1	BRACKET (C) ASSY		169	3-358-286-01	LEVER (MOTOR LEVER)	

4-5. MECHANISM DECK SECTION (3)

(DECK A : TCM-180-VA-H2)
(DECK B : TCM-180-VB-H2)



No.	Part No.	Description	Remarks	No.	Part No.	Description	Remarks
201	X-3358-204-1	LEVER (PINCH LEVER) ASSY		214	*3-358-252-01	LEVER (TU ARM)	
202	*3-358-215-01	BUSHING (WIRE KIT RETAINER)		215	X-3358-203-1	TABLE (T) ASSY, REEL	
203	3-358-265-01	SLIDER (HEAD PC BOARD A)		216	*3-358-255-01	(DECK B)...LEVER (GB LEVER)	
204	7-685-105-19	TPG +P 2X8, TYPE 2, NON-SLIT		217	*3-358-224-01	GEAR (FF GEAR)	
205	3-358-234-01	SPRING (AZIMUTH), COMPRESSION		218	3-358-207-01	SPRING (FF GEAR), COMPRESSION	
206	3-358-213-01	SCREW, AZIMUTH		219	3-358-227-01	SPRING, LEAF	
207	7-623-505-01	LUG, 2		220	3-358-243-01	SPRING (TU-SHUT), TORSION	
208	*3-358-251-01	LEVER (TENSION DETECTION ARM)		221	*3-358-253-01	LEVER (SHUT-OFF LEVER)	
209	3-358-228-01	SPRING, TORSION		222	3-358-285-01	(DECK A)...GUIDE, TAPE	
210	*3-358-270-01	(DECK B)...PULLEY (COUNTER PULLEY)		223	*3-358-286-01	LEVER (MOTOR LEVER)	
211	3-358-248-01	GEAR (SUPPLY REEL)		HE401	1-543-673-11	(DECK B)...HEAD, MAGNETIC (ERASE)	
212	3-358-208-01	SPRING (SUPPLY), COMPRESSION		HP101	1-543-672-11	(DECK A)...HEAD, MAGNETIC (REC/PB)	
213	*3-358-284-01	GEAR (TU GEAR)		HRP101	1-543-672-11	(DECK B)...HEAD, MAGNETIC (REC/PB)	

SECTION 5 ELECTRICAL PARTS LIST

NOTE:

- Due to standardization, replacements in the parts list may be different from the parts specified in the diagrams or the components used on the set.
- Items marked "★" are not stocked since they are seldom required for routine service. Some delay should be anticipated when ordering these items.
- If there are two or more same circuits in a set such as a stereophonic machine, only typical circuit parts may be indicated and capacitors and resistors in other same circuits may be omitted.

CAPACITORS:
MF: μ F, PF: μ PF.

RESISTORS
• All resistors are in ohms.
• F: nonflammable

COILS
• MMH: mH, UH: μ H

SEMICONDUCTORS
In each case, U: μ , for example:
UA....: μ A..., UPA....: μ PA...,
UPC....: μ PC, UPD....: μ PD...

The components identified by mark Δ or dotted line with mark Δ are critical for safety. Replace only with part number specified.

• AUS : Australian

Ref.No.	Part No.	Description
901	*1-632-621-11	PC BOARD, TRANSFORMER
902	*1-632-527-11	PC BOARD, POWER
903	Δ 1-555-648-11 Δ 1-574-581-11 Δ 1-574-902-11	(AUS)...CORD, PWOER (US)...CORD, PWOER (E)...CORD, PWOER
904	Δ 1-526-565-00	(E)...AC PLUG ADAPTOR
905	*1-632-522-11	PC BOARD, IC (A)
906	*1-632-523-11	PC BOARD, IC (B)
907	*A-4334-582-A *A-4334-584-A	(US).....MOUNTED PCB, POWER AMPLIFIER (E,AUS)...MOUNTED PCB, POWER AMPLIFIER
908	*A-4334-585-A *A-4334-587-A	(US).....MOUNTED PCB, AMPLIFIER (E,AUS)...MOUNTED PCB, AMPLIFIER
909	*1-533-213-31	HOLDER, FUSE
910	*1-632-521-11	PC BOARD, PANEL POW KEY
911	*1-632-520-11	PC BOARD, PANEL ST KEY
912	*A-4334-571-A *A-4334-573-A	(US).....MOUNTED PCB, PANEL CONT (E,AUS)...MOUNTED PCB, PANEL CONT
913	*1-632-526-11	PC BOARD, PANEL TC KEY
914	*1-632-528-11	PC BOARD, PANEL PL
921	*1-635-158-11	PC BOARD (A), SW
922	*1-635-158-11	PC BOARD (B), SW
C1	1-161-744-00	CERAMIC 0.01MF 400V
C101	1-162-294-31	CERAMIC 0.001MF 10% 50V
C102	1-126-059-11	ELECT 10MF 20% 50V
C103	1-162-306-11	CERAMIC 0.01MF 20% 16V
C104	1-162-294-31	CERAMIC 0.001MF 10% 50V
C105	1-162-207-31	CERAMIC 22PF 5% 50V
C106	1-162-306-11	CERAMIC 0.01MF 20% 16V
C107	1-162-306-11	CERAMIC 0.01MF 20% 16V
C110	1-162-306-11	CERAMIC 0.01MF 20% 16V
C111	1-164-097-11	CERAMIC 0.022MF 50V
C120	1-162-306-11	CERAMIC 0.01MF 20% 16V
C121	1-126-059-11	ELECT 10MF 20% 50V
C122	1-164-097-11	CERAMIC 0.022MF 50V
C123	1-126-059-11	ELECT 10MF 20% 50V
C124	1-126-162-11	ELECT 3.3MF 20% 50V
C125	1-162-306-11	CERAMIC 0.01MF 20% 16V
C126	1-162-306-11	CERAMIC 0.01MF 20% 16V
C127	1-162-282-31	CERAMIC 100PF 10% 50V
C128	1-126-301-11	ELECT 1MF 20% 50V
C130	1-126-300-11	ELECT 0.47MF 20% 50V
C131	1-126-301-11	ELECT 1MF 20% 50V
C132	1-124-463-00	ELECT 0.1MF 20% 50V
C133	1-130-486-00	(US).....MYLAR 0.018MF 5% 50V
C133	1-130-484-11	(E,AUS)...FILM 0.012MF 5% 50V

Ref.No.	Part No.	Description
C134	1-130-486-00	(US).....MYLAR 0.018MF 5% 50V
C134	1-130-484-00	(E,AUS)...FILM 0.012MF 5% 50V
C135	1-126-162-11	ELECT 3.3MF 20% 50V
C136	1-126-162-11	ELECT 3.3MF 20% 50V
C137	1-161-375-00	CERAMIC 0.0022MF 30% 16V
C138	1-161-375-00	CERAMIC 0.0022MF 30% 16V
C139	1-126-162-11	ELECT 3.3MF 20% 50V
C140	1-126-162-11	ELECT 3.3MF 20% 50V
C141	1-162-306-11	CERAMIC 0.01MF 20% 16V
C142	1-162-290-31	CERAMIC 470PF 10% 50V
C143	1-124-463-00	ELECT 0.1MF 20% 50V
C144	1-124-045-00	ELECT 4.7MF 20% 50V
C145	1-162-207-31	CERAMIC 22PF 5% 50V
C146	1-126-101-11	ELECT 220MF 20% 10V
C147	1-164-097-11	CERAMIC 0.022MF 50V
C148	1-162-306-11	CERAMIC 0.01MF 20% 16V
C149	1-164-097-11	CERAMIC 0.022MF 50V
C150	1-162-306-11	CERAMIC 0.01MF 20% 16V
C151	1-126-059-11	ELECT 10MF 20% 50V
C152	1-162-306-11	CERAMIC 0.01MF 20% 16V
C153	1-126-059-11	ELECT 10MF 20% 50V
C154	1-162-306-11	CERAMIC 0.01MF 20% 16V
C155	1-162-306-11	CERAMIC 0.01MF 20% 16V
C156	1-162-306-11	CERAMIC 0.01MF 20% 16V
C157	1-126-161-11	ELECT 2.2MF 20% 50V
C158	1-164-097-11	CERAMIC 0.022MF 50V
C159	1-124-463-00	ELECT 0.1MF 20% 50V
C170	1-162-306-11	CERAMIC 0.01MF 20% 16V
C171	1-162-306-11	CERAMIC 0.01MF 20% 16V
C172	1-162-306-11	CERAMIC 0.01MF 20% 16V
C173	1-162-282-31	CERAMIC 100PF 10% 50V
C180	1-126-162-11	ELECT 3.3MF 20% 50V
C181	1-126-162-11	ELECT 3.3MF 20% 50V
C200	1-162-282-31	CERAMIC 100PF 10% 50V
C201	1-126-301-11	ELECT 1MF 20% 50V
C202	1-162-282-31	CERAMIC 100PF 10% 50V
C203	1-126-161-11	ELECT 2.2MF 20% 50V
C204	1-106-347-00	MYLAR 0.0015MF 5% 50V
C205	1-130-480-00	MYLAR 0.0056MF 5% 50V
C206	1-126-300-11	ELECT 0.47MF 20% 50V
C207	1-126-022-11	ELECT 47MF 20% 10V
C208	1-124-045-00	ELECT 4.7MF 20% 50V
C211	1-126-022-11	ELECT 47MF 20% 10V
C214	1-161-374-11	CERAMIC 0.0015MF 20% 16V

Ref.No.	Part No.	Description							
C215	1-124-254-00	ELECT	0.68MF	20%	50V				
C216	1-130-490-11	MYLAR	0.039MF	5%	50V				
C217	1-124-464-11	ELECT	0.22MF	20%	50V				
C218	1-130-484-00	MYLAR	0.012MF	5%	50V				
C219	1-130-493-00	MYLAR	0.068MF	5%	50V				
C220	1-130-478-00	MYLAR	0.0039MF	5%	50V				
C221	1-130-487-00	MYLAR	0.022MF	5%	50V				
C222	1-164-086-11	CERAMIC	0.0012MF	10%	50V				
C223	1-164-094-11	CERAMIC	0.0068MF	10%	25V				
C224	1-162-289-31	CERAMIC	390PF	10%	50V				
C225	1-124-261-00	ELECT	10MF	20%	50V				
C226	1-161-494-00	CERAMIC	0.022MF		25V				
C227	1-162-282-31	CERAMIC	100PF	10%	50V				
C300	1-162-282-31	CERAMIC	100PF	10%	50V				
C301	1-126-301-11	ELECT	1MF	20%	50V				
C302	1-162-282-31	CERAMIC	100PF	10%	50V				
C303	1-126-161-11	ELECT	2.2MF	20%	50V				
C304	1-106-347-00	MYLAR	0.0015MF	5%	50V				
C305	1-130-480-00	MYLAR	0.0056MF	5%	50V				
C306	1-126-300-11	ELECT	0.47MF	20%	50V				
C307	1-126-022-11	ELECT	47MF	20%	10V				
C308	1-124-045-00	ELECT	4.7MF	20%	50V				
C311	1-126-024-11	ELECT	220MF	20%	16V				
C314	1-161-374-11	CERAMIC	0.0015MF	20%	16V				
C315	1-124-254-00	ELECT	0.68MF	20%	50V				
C316	1-130-490-11	MYLAR	0.039MF	5%	50V				
C317	1-124-464-11	ELECT	0.22MF	20%	50V				
C318	1-130-484-00	MYLAR	0.012MF	5%	50V				
C319	1-130-493-00	MYLAR	0.068MF	5%	50V				
C320	1-130-478-00	MYLAR	0.0039MF	5%	50V				
C321	1-130-487-00	MYLAR	0.022MF	5%	50V				
C322	1-164-086-11	CERAMIC	0.0012MF	10%	50V				
C323	1-164-094-11	CERAMIC	0.0068MF	10%	25V				
C324	1-162-289-31	CERAMIC	390PF	10%	50V				
C325	1-124-261-00	ELECT	10MF	20%	50V				
C326	1-161-494-00	CERAMIC	0.022MF		25V				
C400	1-162-289-31	CERAMIC	390PF	10%	50V				
C401	1-130-487-00	MYLAR	0.022MF	5%	50V				
C402	1-124-767-00	ELECT	2.2MF	20%	50V				
C403	1-124-994-11	ELECT	100MF	20%	10V				
C404	1-162-289-31	CERAMIC	390PF	10%	50V				
C405	1-130-487-00	MYLAR	0.022MF	5%	50V				
C406	1-124-767-00	ELECT	2.2MF	20%	50V				
C407	1-124-994-11	ELECT	100MF	20%	10V				
C408	1-106-359-00	MYLAR	0.0047MF	5%	50V				
C409	1-162-289-31	CERAMIC	390PF	10%	50V				
C410	1-126-301-11	ELECT	1MF	20%	50V				
C411	1-126-161-11	ELECT	2.2MF	20%	50V				
C413	1-124-997-11	ELECT	470MF	20%	10V				
C414	1-131-587-11	TANTALUM	0.68MF	10%	35V				
C415	1-126-161-11	ELECT	2.2MF	20%	50V				
C416	1-124-045-00	ELECT	4.7MF	20%	50V				
C417	1-126-300-11	ELECT	0.47MF	20%	50V				
C418	1-126-059-11	ELECT	10MF	20%	50V				
C419	1-126-059-11	ELECT	10MF	20%	50V				
C420	1-126-059-11	ELECT	10MF	20%	50V				
C421	1-162-284-31	CERAMIC	150PF	10%	50V				
C422	1-136-273-91	FILM	75PF	5%	630V				
C423	1-136-271-00	FILM	56PF	5%	630V				
C424	1-162-280-31	CERAMIC	82PF	10%	50V				
C425	1-161-375-00	CERAMIC	0.0022MF	30%	16V				
C426	1-161-375-00	CERAMIC	0.0022MF	30%	16V				
C427	1-161-375-00	CERAMIC	0.0022MF	30%	16V				
C428	1-161-375-00	CERAMIC	0.0022MF	30%	16V				
C500	1-162-289-31	CERAMIC	390PF	10%	50V				
C501	1-130-487-00	MYLAR	0.022MF	5%	50V				
C502	1-124-767-00	ELECT	2.2MF	20%	50V				
C503	1-124-994-11	ELECT	100MF	20%	10V				
C504	1-162-289-31	CERAMIC	390PF	10%	50V				
C505	1-130-487-00	MYLAR	0.022MF	5%	50V				
C506	1-124-767-00	ELECT	2.2MF	20%	50V				
C507	1-124-994-11	ELECT	100MF	20%	10V				
C508	1-106-359-00	MYLAR	0.0047MF	5%	50V				
C509	1-162-289-31	CERAMIC	390PF	10%	50V				
C511	1-126-161-11	ELECT	2.2MF	20%	50V				
C513	1-124-997-11	ELECT	470MF	20%	10V				
C514	1-131-587-11	TANTALUM	0.68MF	10%	35V				
C515	1-126-161-11	ELECT	2.2MF	20%	50V				
C516	1-124-045-00	ELECT	4.7MF	20%	50V				
C517	1-126-300-11	ELECT	0.47MF	20%	50V				
C518	1-126-059-11	ELECT	10MF	20%	50V				
C520	1-126-059-11	ELECT	10MF	20%	50V				
C521	1-162-284-31	CERAMIC	150PF	10%	50V				
C522	1-136-273-91	FILM	75PF	5%	630V				
C523	1-136-271-00	FILM	56PF	5%	630V				
C524	1-162-280-31	CERAMIC	82PF	10%	50V				
C525	1-136-562-11	FILM	0.0082MF	5%	630V				
C526	1-130-482-00	MYLAR	0.0082MF	5%	50V				
C527	1-126-161-11	ELECT	2.2MF	20%	50V				
C528	1-130-482-00	MYLAR	0.0082MF	5%	50V				
C529	1-130-478-00	MYLAR	0.0039MF	5%	50V				
C530	1-130-478-00	MYLAR	0.0039MF	5%	50V				
C531	1-126-300-11	ELECT	0.47MF	20%	50V				
C532	1-126-161-11	ELECT	2.2MF	20%	50V				
C533	1-124-556-11	ELECT	2200MF	20%	16V				
C534	1-126-024-11	ELECT	220MF	20%	16V				
C535	1-124-045-00	ELECT	4.7MF	20%	50V				
C536	1-126-301-11	ELECT	1MF	20%	50V				
C540	1-124-997-11	ELECT	470MF	20%	10V				
C541	1-124-997-11	ELECT	470MF	20%	10V				
C600	1-161-377-00	CERAMIC	0.0047MF	30%	16V				
C601	1-124-261-00	ELECT	10MF	20%	50V				
C602	1-161-379-00	CERAMIC	0.01MF	30%	16V				
C603	1-161-379-00	CERAMIC	0.01MF	30%	16V				
C604	1-164-035-11	CERAMIC	47PF	5%	50V				
C605	1-164-035-11	CERAMIC	47PF	5%	50V				
C606	1-125-486-11	DOUBLE LAYERS	0.22F		5.5V				
C607	1-124-261-00	ELECT	10MF	20%	50V				
C608	1-130-495-00	MYLAR	0.1MF	5%	50V				
C609	1-124-257-00	ELECT	2.2MF	20%	50V				
C610	1-124-589-11	ELECT	47MF	20%	16V				
C611	1-124-261-00	ELECT	10MF	20%	50V				
C612	1-124-257-00	ELECT	2.2MF	20%	50V				
C613	1-161-379-00	CERAMIC	0.01MF	30%	16V				
C614	1-161-379-00	CERAMIC	0.01MF	30%	16V				
C616	1-126-157-11	ELECT	10MF	20%	16V				

Ref.No.	Part No.	Description				
C617	1-164-097-11	CERAMIC	0.022MF		50V	
C700	1-126-301-11	ELECT	1MF	20%	50V	
C701	1-162-288-31	CERAMIC	330PF	10%	50V	
C702	1-162-282-31	CERAMIC	100PF	10%	50V	
C703	1-124-478-11	ELECT	100MF	20%	25V	
C704	1-162-193-31	CERAMIC	3.3PF	10%	50V	
C705	1-126-890-11	ELECT	10MF	20%	100V	
C706	1-124-910-11	ELECT	47MF	20%	50V	
C707	1-130-489-00	MYLAR	0.033MF	5%	50V	
C708	1-124-478-11	ELECT	100MF	20%	25V	
C709	1-124-045-00	ELECT	4.7MF	20%	50V	
C710	1-124-443-00	ELECT	100MF	20%	6.3V	
C711	1-126-161-11	ELECT	2.2MF	20%	50V	
C712	1-161-494-00	CERAMIC	0.022MF		25V	
C800	1-126-301-11	ELECT	1MF	20%	50V	
C801	1-162-288-31	CERAMIC	330PF	10%	50V	
C802	1-162-282-31	CERAMIC	100PF	10%	50V	
C803	1-124-478-11	ELECT	100MF	20%	25V	
C804	1-162-193-31	CERAMIC	3.3PF	10%	50V	
C805	1-126-890-11	ELECT	10MF	20%	100V	
C806	1-124-910-11	ELECT	47MF	20%	50V	
C807	1-130-489-00	MYLAR	0.033MF	5%	50V	
C808	1-130-491-00	MYLAR	0.047MF	5%	50V	
C809	1-161-375-00	CERAMIC	0.0022MF	30%	16V	
C901	1-125-612-11	ELECT(BLOCK)	6800MF	20%	71V	
C902	1-125-612-11	ELECT(BLOCK)	6800MF	20%	71V	
C903	1-130-483-00	MYLAR	0.01MF	5%	50V	
C904	1-130-483-00	MYLAR	0.01MF	5%	50V	
C905	1-126-029-11	ELECT	3300MF	20%	25V	
C906	1-126-029-11	ELECT	3300MF	20%	25V	
C907	1-126-022-11	ELECT	47MF	20%	10V	
C908	1-126-022-11	ELECT	47MF	20%	10V	
C909	1-130-483-00	MYLAR	0.01MF	5%	50V	
C910	1-126-857-11	ELECT	470MF	20%	35V	
C911	1-126-301-11	(E,AUS)...ELECT	1MF	20%	50V	
C912	1-126-022-11	ELECT	47MF	20%	10V	
C913	1-126-022-11	ELECT	47MF	20%	10V	
C901	1-161-494-00	CERAMIC	0.022MF		25V	
C902	1-161-494-00	CERAMIC	0.022MF		25V	
C903	1-162-294-31	CERAMIC	0.001MF	10%	50V	
C904	1-162-294-31	CERAMIC	0.001MF	10%	50V	
C920	1-106-367-00	MYLAR	0.01MF	10%	100V	
C921	1-106-367-00	MYLAR	0.01MF	10%	100V	
C951	1-161-494-00	CERAMIC	0.022MF		25V	
C952	1-161-494-00	CERAMIC	0.022MF		25V	
C953	1-162-294-31	CERAMIC	0.001MF	10%	50V	
C954	1-162-294-31	CERAMIC	0.001MF	10%	50V	
CF100	1-567-389-11	FILTER, CERAMIC				
CF101	1-567-389-11	FILTER, CERAMIC				
CN1	*1-568-318-11	PLUG, CONNECTOR 6P				
CN2	*1-568-318-11	PLUG, CONNECTOR 6P				
CN3	*1-568-320-11	PLUG, CONNECTOR 8P				
CN4	*1-568-320-11	PLUG, CONNECTOR 8P				
CN5	1-568-317-11	SOCKET, CONNECTOR 6P				
CN6	1-568-317-11	SOCKET, CONNECTOR 6P				
CN7	1-568-319-11	SOCKET, CONNECTOR 8P				
CN8	1-568-319-11	SOCKET, CONNECTOR 8P				
CN9	1-568-120-11	PIN, CONNECTOR (PC BOARD) 7P				
CN10	*1-566-879-11	PIN, CONNECTOR (PC BOARD) 8P				
CN400	*1-564-507-11	PLUG, CONNECTOR 4P				
CN401	*1-564-509-11	PLUG, CONNECTOR 6P				
CN402	*1-564-505-11	PLUG, CONNECTOR 2P				
CN403	*1-564-340-00	PIN, CONNECTOR 6P				
CN404	*1-564-341-11	PIN, CONNECTOR 7P				
CN405	*1-564-506-11	PLUG, CONNECTOR 3P				
CN406	*1-564-505-11	PLUG, CONNECTOR 2P				
CN407	*1-564-505-11	PLUG, CONNECTOR 2P				
CN901	*1-564-499-11	(DECK A)...PIN, CONNECTOR 6P				
CN902	*1-564-500-11	(DECK B)...PIN, CONNECTOR 7P				
CNJ501	*1-561-651-00	SOCKET, CONNECTOR 7P				
CNJ502	*1-562-573-11	SOCKET, CONNECTOR 8P				
CNJ900	*1-564-358-00	PIN, CONNECTOR 3P				
CP600	8-749-920-83	IC GP1U52XB				
D170	8-719-933-35	DIODE HZS6A3L				
D200	8-719-010-29	DIODE UZ-4.3BSB				
D500	8-719-912-20	DIODE 1SS120				
D501	8-719-912-20	DIODE 1SS120				
D502	8-719-912-20	DIODE 1SS120				
D503	8-719-912-20	DIODE 1SS120				
D504	8-719-912-20	DIODE 1SS120				
D505	8-719-912-20	DIODE 1SS120				
D506	8-719-912-20	DIODE 1SS120				
D508	8-719-302-45	LED SEL1210S				
D509	8-719-912-20	DIODE 1SS120				
D510	8-719-933-50	DIODE HZS7C2L				
D511	8-719-933-50	DIODE HZS7C2L				
D512	8-719-912-20	DIODE 1SS120				
D600	8-719-912-20	DIODE 1SS120				
D601	8-719-912-20	DIODE 1SS120				
D602	8-719-912-20	DIODE 1SS120				
D603	8-719-912-20	DIODE 1SS120				
D604	8-719-912-20	DIODE 1SS120				
D605	8-719-912-20	DIODE 1SS120				
D606	8-719-912-20	DIODE 1SS120				
D607	8-719-912-20	DIODE 1SS120				
D609	8-719-912-20	(E,AUS)...DIODE 1SS120				
D610	8-719-912-20	(E,AUS)...DIODE 1SS120				
D613	8-719-912-20	DIODE 1SS120				
D614	8-719-312-66	LED SEL481 4A-D				
D615	8-719-312-66	LED SEL481 4A-D				
D616	8-719-312-66	LED SEL481 4A-D				
D617	8-719-312-66	LED SEL481 4A-D				
D618	8-719-312-66	LED SEL481 4A-D				
D619	8-719-312-66	LED SEL481 4A-D				
D620	8-719-312-66	LED SEL481 4A-D				
D621	8-719-312-66	LED SEL481 4A-D				
D622	8-719-312-66	LED SEL481 4A-D				
D623	8-719-312-66	LED SEL481 4A-D				
D624	8-719-312-66	LED SEL481 4A-D				
D625	8-719-912-20	DIODE 1SS120				
D627	8-719-302-45	LED SEL1210S				
D700	8-719-815-85	DIODE 1S1585				
D701	8-719-815-85	DIODE 1S1585				
D702	8-719-912-20	DIODE 1SS120				
D703	8-719-815-85	DIODE 1S1585				

Ref.No.	Part No.	Description	Ref.No.	Part No.	Description
D800	8-719-815-85	DIODE 1S1585	IFT100	1-404-853-11	TRANSFORMER,IF(CERAMIC FILTER)
D801	8-719-815-85	DIODE 1S1585	J200	1-569-471-21	JACK, PIN 6P (PHONO/CD/VIDEO/AUX)
D900	8-719-302-38	(US).....DIODE RBV-602-01	J700	1-563-347-11	JACK, LARGE TYPE (HEADPHONES)
D900	8-719-312-09	(E,AUS)...DIODE RBA-402	L100	1-408-421-00	INDUCTOR 100UH
D901	8-719-200-02	DIODE 10E2N	L120	1-410-119-11	INDUCTOR 1MMH
D902	8-719-200-02	DIODE 10E2N	L400	1-410-780-11	INDUCTOR 27MMH
D903	8-719-200-02	DIODE 10E2N	L500	1-410-780-11	INDUCTOR 27MMH
D904	8-719-200-02	DIODE 10E2N	L700	*1-420-872-00	COIL, AIR CORE
D905	8-719-912-20	DIODE 1SS120	L800	*1-420-872-00	COIL, AIR CORE
D906	8-719-200-02	DIODE 10E2N	LCD600	1-807-842-11	DISPLAY PANEL, LIQUID CRYSTAL
D907	8-719-933-41	DIODE HZS6C3L	LPF100	1-235-164-00	FILTER, LOW PASS
DR3	*1-564-496-11	PIN, CONNECTOR 3P	LPF101	1-235-164-00	FILTER, LOW PASS
DR4	*1-564-495-11	PIN, CONNECTOR 2P	M901	X-3358-212-1	(DECK A)...MOTOR (B) ASSY
EH4	*1-564-507-11	PLUG, CONNECTOR 4P	M902	X-3358-212-1	(DECK B)...MOTOR (B) ASSY
EH5	*1-564-511-11	PLUG, CONNECTOR 8P	PL600	1-518-654-11	LAMP, PILOT
EH6	*1-564-510-11	PLUG, CONNECTOR 7P	PL601	1-518-654-11	LAMP, PILOT
EH7	*1-564-509-11	PLUG, CONNECTOR 6P	Q100	8-729-230-99	TRANSISTOR 2SC26690Y
EH8	*1-564-505-11	PLUG, CONNECTOR 2P	Q102	8-729-900-61	TRANSISTOR DTA114ES
F1	△.1-532-388-51	(E).....FUSE (2.0A)	Q103	8-729-900-80	TRANSISTOR DTC114ES
F1	△.1-532-286-00	(AUS)...FUSE TIME-LAG (2.5A)	Q104	8-729-900-80	TRANSISTOR DTC114ES
F1	△.1-576-110-11	(US).....FUSE (6.0A)	Q105	8-729-202-67	TRANSISTOR 2SK246GR3
F2	△.1-532-388-51	(E)...FUSE (2.0A)	Q106	8-729-230-93	TRANSISTOR 2SC3113-AB
F900	△.1-532-686-00	(E,AUS)...LINK, IC	Q107	8-729-119-78	TRANSISTOR 2SC2603-E
F900	△.1-532-783-21	(US)...FUSE, MICRO (SECONDARY)	Q108	8-729-119-78	TRANSISTOR 2SC2603-E
F901	△.1-532-686-00	(E,AUS)...LINK, IC	Q200	8-729-801-93	TRANSISTOR 2SD1387
F901	△.1-532-783-21	(US)...FUSE, MICRO (SECONDARY)	Q201	8-729-141-26	TRANSISTOR 2SC3622A-LK
FE100	1-465-283-11	FRONT END (2 GANG)	Q202	8-729-900-36	TRANSISTOR DTC124ES
FE101	1-236-461-11	ENCAPSULATED COMPONENT	Q301	8-729-141-26	TRANSISTOR 2SC3622A-LK
HE401	1-543-673-11	(DECK B)...HEAD, MAGNETIC (ERASE)	Q400	8-729-900-89	TRANSISTOR DTC144ES
HPT01	1-543-672-11	(DECK A)...HEAD, MAGNETIC (REC/PB)	Q401	8-729-900-89	TRANSISTOR DTC144ES
HRP101	1-543-672-11	(DECK B)...HEAD, MAGNETIC (REC/PB)	Q402	8-729-620-05	TRANSISTOR 2SC2603-EF
IC100	8-759-231-01	IC TC9227P	Q403	8-729-620-05	TRANSISTOR 2SC2603-EF
IC101	8-759-821-45	IC LA1851N	Q500	8-729-900-89	TRANSISTOR DTC144ES
IC200	8-759-634-50	IC M5218AL	Q502	8-729-620-05	TRANSISTOR 2SC2603-EF
IC201	8-759-208-06	IC TC4051BPHB	Q503	8-729-620-05	TRANSISTOR 2SC2603-EF
IC202	8-759-820-62	IC LB1639	Q504	8-729-194-57	TRANSISTOR 2SC945-P
IC203	8-759-602-04	IC M5226P	Q505	8-729-194-57	TRANSISTOR 2SC945-P
IC301	8-759-208-06	IC TC4051BPHB	Q506	8-729-281-52	TRANSISTOR 2SC1815Y
IC303	8-759-602-04	IC M5226P	Q507	8-729-900-61	TRANSISTOR DTA114ES
IC400	8-759-111-44	IC UPC4570C-1	Q508	8-729-900-80	TRANSISTOR DTC114ES
IC401	8-759-111-44	IC UPC4570C-1	Q509	8-729-900-65	TRANSISTOR DTA144ES
IC402	8-759-000-49	IC MC14066BCP	Q510	8-729-900-65	TRANSISTOR DTA144ES
IC403	8-752-034-26	IC CXA1101P	Q511	8-729-900-65	TRANSISTOR DTA144ES
IC404	8-752-038-02	IC CXA1198AP	Q512	8-729-900-89	TRANSISTOR DTC144ES
IC501	8-759-140-11	IC UPD4011BC	Q515	8-729-920-98	TRANSISTOR 2SD1761-EF
IC502	8-759-240-01	IC TC4001BP	Q516	8-729-920-97	TRANSISTOR 2SB1187-EF
IC600	8-759-239-12	IC TC9306F-044UL	Q517	8-729-900-89	TRANSISTOR DTC144ES
IC601	8-759-632-01	IC M50725-116SP	Q518	8-729-900-89	TRANSISTOR DTC144ES
IC700	8-749-921-04	(E,AUS)...IC STK-4211MK2	Q519	8-729-900-89	TRANSISTOR DTC144ES
IC700	8-749-921-68	(US).....IC STK-4231MK2	Q600	8-729-900-61	TRANSISTOR DTA114ES
IC701	8-759-111-68	IC UPC1237HA	Q601	8-729-900-61	TRANSISTOR DTA114ES
IC900	8-749-604-33	(E,AUS)...IC M5F7812	Q602	8-729-620-05	TRANSISTOR 2SC2603-EF
IC901	8-759-982-10	IC M5F7809	Q603	8-729-900-89	TRANSISTOR DTC144ES
IC902	8-759-604-49	IC M5F7909	Q604	8-729-900-89	TRANSISTOR DTC144ES
			Q700	8-729-140-84	TRANSISTOR 2SA1841-PAFAEA

Note: The components identified by mark Δ or dotted line with mark Δ are critical for safety. Replace only with part number specified.

Ref.No.	Part No.	Description					
Q701	8-729-900-63	TRANSISTOR DTA124ES					
Q800	8-729-140-84	TRANSISTOR 2SA1841-PAFAEA					
Q900	8-729-620-05	TRANSISTOR 2SC2603-EF					
Q901	8-729-620-05	TRANSISTOR 2SC2603-EF					
R1	1-202-725-00	(US)...SOLID	3.3M	10%	1/2W		
R100	△.1-247-692-11	CARBON	22	5%	1/4W	F	
R101	1-249-411-11	CARBON	330	5%	1/4W		
R102	1-249-433-11	CARBON	22K	5%	1/4W		
R103	1-249-433-11	CARBON	22K	5%	1/4W		
R104	1-249-411-11	CARBON	330	5%	1/4W		
R105	1-249-421-11	CARBON	2.2K	5%	1/4W		
R111	1-249-441-11	CARBON	100K	5%	1/4W		
R112	1-249-437-11	CARBON	47K	5%	1/4W		
R113	1-249-441-11	CARBON	100K	5%	1/4W		
R114	1-249-397-11	CARBON	22	5%	1/4W		
R120	△.1-247-689-11	CARBON	12	5%	1/4W	F	
R121	1-249-435-11	CARBON	33K	5%	1/4W		
R122	1-249-428-11	CARBON	8.2K	5%	1/4W		
R123	1-249-432-11	CARBON	18K	5%	1/4W		
R124	1-249-429-11	CARBON	10K	5%	1/4W		
R125	1-249-425-11	CARBON	4.7K	5%	1/4W		
R126	1-249-425-11	CARBON	4.7K	5%	1/4W		
R127	1-249-426-11	CARBON	5.6K	5%	1/4W		
R128	1-249-426-11	CARBON	5.6K	5%	1/4W		
R129	1-249-421-11	CARBON	2.2K	5%	1/4W		
R130	1-249-421-11	CARBON	2.2K	5%	1/4W		
R131	1-249-437-11	CARBON	47K	5%	1/4W		
R132	1-249-416-11	CARBON	820	5%	1/4W		
R133	1-249-437-11	CARBON	47K	5%	1/4W		
R134	1-249-415-11	CARBON	680	5%	1/4W		
R135	1-249-417-11	CARBON	1K	5%	1/4W		
R136	1-249-433-11	CARBON	22K	5%	1/4W		
R137	1-247-895-00	CARBON	470K	5%	1/4W		
R138	1-247-895-00	CARBON	470K	5%	1/4W		
R139	1-249-416-11	CARBON	820	5%	1/4W		
R140	1-249-416-11	CARBON	820	5%	1/4W		
R150	△.1-247-692-11	CARBON	22	5%	1/4W	F	
R151	1-249-417-11	CARBON	1K	5%	1/4W		
R152	1-249-417-11	CARBON	1K	5%	1/4W		
R153	1-249-417-11	CARBON	1K	5%	1/4W		
R154	1-249-417-11	CARBON	1K	5%	1/4W		
R155	△.1-247-696-11	CARBON	47	5%	1/4W	F	
R156	1-249-423-11	CARBON	3.3K	5%	1/4W		
R157	1-249-414-11	CARBON	560	5%	1/4W		
R158	1-249-418-11	CARBON	1.2K	5%	1/4W		
R159	1-249-410-11	CARBON	270	5%	1/4W		
R160	1-249-425-11	CARBON	4.7K	5%	1/4W		
R161	1-249-421-11	CARBON	2.2K	5%	1/4W		
R162	1-249-425-11	CARBON	4.7K	5%	1/4W		
R163	1-249-425-11	CARBON	4.7K	5%	1/4W		
R164	1-249-405-11	CARBON	100	5%	1/4W		
R170	△.1-247-699-11	CARBON	82	5%	1/4W	F	
R200	1-249-418-11	CARBON	1.2K	5%	1/4W		
R201	1-247-897-11	CARBON	560K	5%	1/4W		
R202	1-249-429-11	CARBON	10K	5%	1/4W		
R203	1-247-897-11	CARBON	560K	5%	1/4W		
R204	1-249-417-11	CARBON	1K	5%	1/4W		
R205	1-249-438-11	CARBON	56K	5%	1/4W		

Ref.No.	Part No.	Description					
R206	1-249-415-11	CARBON	680	5%	1/4W		
R207	1-249-437-11	CARBON	47K	5%	1/4W		
R208	1-247-897-11	CARBON	560K	5%	1/4W		
R209	1-249-409-11	CARBON	220	5%	1/4W		
R210	1-249-441-11	CARBON	100K	5%	1/4W		
R211	1-249-417-11	CARBON	1K	5%	1/4W		
R212	1-249-441-11	CARBON	100K	5%	1/4W		
R213	1-249-441-11	CARBON	100K	5%	1/4W		
R214	1-249-441-11	CARBON	100K	5%	1/4W		
R215	1-249-425-11	CARBON	4.7K	5%	1/4W		
R216	1-249-425-11	CARBON	4.7K	5%	1/4W		
R217	1-249-420-11	CARBON	1.8K	5%	1/4W		
R218	1-249-428-11	CARBON	8.2K	5%	1/4W		
R219	1-249-425-11	CARBON	4.7K	5%	1/4W		
R220	1-249-425-11	CARBON	4.7K	5%	1/4W		
R221	1-249-419-11	CARBON	1.5K	5%	1/4W		
R222	1-247-731-11	CARBON	22	5%	1/2W		
R223	1-249-417-11	CARBON	1K	5%	1/4W		
R300	1-249-418-11	CARBON	1.2K	5%	1/4W		
R301	1-247-897-11	CARBON	560K	5%	1/4W		
R302	1-249-429-11	CARBON	10K	5%	1/4W		
R303	1-247-897-11	CARBON	560K	5%	1/4W		
R304	1-249-417-11	CARBON	1K	5%	1/4W		
R305	1-249-438-11	CARBON	56K	5%	1/4W		
R306	1-249-415-11	CARBON	680	5%	1/4W		
R307	1-249-437-11	CARBON	47K	5%	1/4W		
R308	1-247-897-11	CARBON	560K	5%	1/4W		
R309	1-249-409-11	CARBON	220	5%	1/4W		
R310	1-249-441-11	CARBON	100K	5%	1/4W		
R311	1-249-417-11	CARBON	1K	5%	1/4W		
R317	△.1-247-732-11	CARBON	27	5%	1/2W	F	
R318	1-249-421-11	CARBON	2.2K	5%	1/4W		
R319	1-249-425-11	CARBON	4.7K	5%	1/4W		
R320	1-249-425-11	CARBON	4.7K	5%	1/4W		
R321	1-249-419-11	CARBON	1.5K	5%	1/4W		
R323	1-249-417-11	CARBON	1K	5%	1/4W		
R400	1-247-889-00	CARBON	270K	5%	1/4W		
R401	1-249-404-00	CARBON	82	5%	1/4W		
R402	1-247-881-00	CARBON	120K	5%	1/4W		
R403	1-247-850-11	CARBON	6.2K	5%	1/4W		
R404	1-249-409-11	CARBON	220	5%	1/4W		
R405	1-247-889-00	CARBON	270K	5%	1/4W		
R406	1-249-404-00	CARBON	82	5%	1/4W		
R407	1-247-881-00	CARBON	120K	5%	1/4W		
R408	1-247-850-11	CARBON	6.2K	5%	1/4W		
R409	1-249-409-11	CARBON	220	5%	1/4W		
R410	1-249-430-11	CARBON	12K	5%	1/4W		
R411	1-249-431-11	CARBON	15K	5%	1/4W		
R412	1-247-887-00	CARBON	220K	5%	1/4W		
R413	1-249-437-11	CARBON	47K	5%	1/4W		
R414	1-249-401-11	CARBON	47	5%	1/4W		
R415	1-215-460-00	METAL	43K	1%	1/6W		
R416	1-249-433-11	CARBON	22K	5%	1/4W		
R417	1-249-437-11	CARBON	47K	5%	1/4W		
R418	1-249-423-11	CARBON	3.3K	5%	1/4W		
R419	1-249-429-11	CARBON	10K	5%	1/4W		
R420	1-249-421-11	CARBON	2.2K	5%	1/4W		

Note: The components identified by mark Δ or dotted line with mark Δ are critical for safety. Replace only with part number specified.

Ref.No.	Part No.	Description				Ref.No.	Part No.	Description			
R421	1-249-429-11	CARBON	10K	5%	1/4W	R529	1-249-430-11	CARBON	12K	5%	1/4W
R422	1-249-417-11	CARBON	1K	5%	1/4W	R532	1-247-688-11	CARBON	10	5%	1/4W
R423	1-249-425-11	CARBON	4.7K	5%	1/4W	R533	1-249-434-11	CARBON	27K	5%	1/4W
R424	1-249-427-11	CARBON	6.8K	5%	1/4W	R534	1-249-434-11	CARBON	27K	5%	1/4W
R425	1-249-422-11	CARBON	2.7K	5%	1/4W	R535	1-249-429-11	CARBON	10K	5%	1/4W
R426	1-249-425-11	CARBON	4.7K	5%	1/4W	R536	1-249-417-11	CARBON	1K	5%	1/4W
R427	1-249-441-11	CARBON	100K	5%	1/4W	R537	1-249-425-11	CARBON	4.7K	5%	1/4W
R428	1-247-864-11	CARBON	24K	5%	1/4W	R538	1-249-385-11	CARBON	2.2	5%	1/4W
R429	1-249-430-11	CARBON	12K	5%	1/4W	R539	1-249-392-11	CARBON	8.2	5%	1/4W
R430	1-247-876-11	CARBON	75K	5%	1/4W	R540	1-249-392-11	CARBON	8.2	5%	1/4W
R431	1-249-435-11	CARBON	33K	5%	1/4W	R542	1-249-420-11	CARBON	1.8K	5%	1/4W
R432	1-247-868-11	CARBON	36K	5%	1/4W	R543	1-249-408-11	CARBON	180	5%	1/4W
R433	1-247-883-00	CARBON	150K	5%	1/4W	R544	1-249-420-11	CARBON	1.8K	5%	1/4W
R434	1-249-440-11	CARBON	82K	5%	1/4W	R545	1-249-408-11	CARBON	180	5%	1/4W
R435	1-247-883-00	CARBON	150K	5%	1/4W	R546	1-249-435-11	CARBON	33K	5%	1/4W
R436	1-249-437-11	CARBON	47K	5%	1/4W	R547	1-249-427-11	CARBON	6.8K	5%	1/4W
R437	1-249-437-11	CARBON	47K	5%	1/4W	R548	1-249-426-11	CARBON	5.6K	5%	1/4W
R438	1-247-874-11	CARBON	62K	5%	1/4W	R549	1-249-426-11	CARBON	5.6K	5%	1/4W
R439	1-249-440-11	CARBON	82K	5%	1/4W	R550	1-249-426-11	CARBON	5.6K	5%	1/4W
R440	1-247-882-11	CARBON	130K	5%	1/4W	R551	1-249-429-11	CARBON	10K	5%	1/4W
R441	1-247-882-11	CARBON	130K	5%	1/4W	R552	1-249-439-11	CARBON	68K	5%	1/4W
R442	1-249-435-11	CARBON	33K	5%	1/4W	R553	1-249-420-11	CARBON	1.8K	5%	1/4W
R443	1-247-868-11	CARBON	36K	5%	1/4W	R559	1-249-433-11	CARBON	22K	5%	1/4W
R444	1-249-433-11	CARBON	22K	5%	1/4W	R560	1-249-410-11	CARBON	270	5%	1/4W
R445	1-247-874-11	CARBON	62K	5%	1/4W	R561	1-249-410-11	CARBON	270	5%	1/4W
R446	1-249-438-11	CARBON	56K	5%	1/4W	R562	1-249-423-11	CARBON	3.3K	5%	1/4W
R447	1-247-883-00	CARBON	150K	5%	1/4W	R563	1-249-416-11	CARBON	820	5%	1/4W
R448	1-247-870-11	CARBON	43K	5%	1/4W	R564	1-249-424-11	CARBON	3.9K	5%	1/4W
R449	1-247-872-11	CARBON	51K	5%	1/4W	R565	1-249-437-11	CARBON	47K	5%	1/4W
R450	1-247-868-11	CARBON	36K	5%	1/4W	R566	1-249-421-11	CARBON	2.2K	5%	1/4W
R451	1-247-872-11	CARBON	51K	5%	1/4W	R567	1-249-427-11	CARBON	6.8K	5%	1/4W
R452	1-249-437-11	CARBON	47K	5%	1/4W	R600	1-249-413-11	CARBON	470	5%	1/4W
R453	1-247-881-00	CARBON	120K	5%	1/4W	R601	1-249-408-11	CARBON	180	5%	1/4W
R500	1-247-889-00	CARBON	270K	5%	1/4W	R602	1-249-423-11	CARBON	3.3K	5%	1/4W
R501	1-249-404-00	CARBON	82	5%	1/4W	R603	1-247-832-11	CARBON	1.1K	5%	1/4W
R502	1-247-881-00	CARBON	120K	5%	1/4W	R604	1-249-417-11	CARBON	1K	5%	1/4W
R503	1-247-850-11	CARBON	6.2K	5%	1/4W	R605	1-249-419-11	CARBON	1.5K	5%	1/4W
R504	1-249-409-11	CARBON	220	5%	1/4W	R606	1-249-421-11	CARBON	2.2K	5%	1/4W
R505	1-247-889-00	CARBON	270K	5%	1/4W	R607	1-249-425-11	CARBON	4.7K	5%	1/4W
R506	1-249-404-00	CARBON	82	5%	1/4W	R608	1-249-429-11	CARBON	10K	5%	1/4W
R507	1-247-881-00	CARBON	120K	5%	1/4W	R609	1-249-429-11	CARBON	10K	5%	1/4W
R508	1-247-850-11	CARBON	6.2K	5%	1/4W	R610	1-249-435-11	CARBON	33K	5%	1/4W
R509	1-249-409-11	CARBON	220	5%	1/4W	R611	1-249-423-11	CARBON	3.3K	5%	1/4W
R510	1-249-430-11	CARBON	12K	5%	1/4W	R612	1-249-441-11	CARBON	100K	5%	1/4W
R511	1-249-431-11	CARBON	15K	5%	1/4W	R613	1-249-393-11	CARBON	10	5%	1/4W
R512	1-247-887-00	CARBON	220K	5%	1/4W	R614	1-247-903-00	CARBON	1M	5%	1/4W
R517	1-249-437-11	CARBON	47K	5%	1/4W	R615	1-249-417-11	CARBON	1K	5%	1/4W
R518	1-249-423-11	CARBON	3.3K	5%	1/4W	R616	1-249-417-11	CARBON	1K	5%	1/4W
R519	1-249-429-11	CARBON	10K	5%	1/4W	R617	1-249-417-11	CARBON	1K	5%	1/4W
R520	1-249-421-11	CARBON	2.2K	5%	1/4W	R618	1-249-417-11	CARBON	1K	5%	1/4W
R521	1-249-429-11	CARBON	10K	5%	1/4W	R619	1-249-417-11	CARBON	1K	5%	1/4W
R522	1-249-417-11	CARBON	1K	5%	1/4W	R620	1-249-433-11	CARBON	22K	5%	1/4W
R523	1-249-425-11	CARBON	4.7K	5%	1/4W	R621	1-249-425-11	CARBON	4.7K	5%	1/4W
R524	1-249-427-11	CARBON	6.8K	5%	1/4W	R622	1-249-425-11	CARBON	4.7K	5%	1/4W
R525	1-249-422-11	CARBON	2.7K	5%	1/4W	R623	1-249-417-11	CARBON	1K	5%	1/4W
R526	1-249-425-11	CARBON	4.7K	5%	1/4W	R624	1-249-421-11	CARBON	2.2K	5%	1/4W
R527	1-249-441-11	CARBON	100K	5%	1/4W	R626	1-249-408-11	CARBON	180	5%	1/4W

Ref.No.	Part No.	Description			
R627	1-249-395-11	CARBON	15	5%	1/4W
R628	1-249-395-11	CARBON	15	5%	1/4W
R629	1-249-438-11	CARBON	56K	5%	1/4W
R630	1-249-429-11	CARBON	10K	5%	1/4W
R631	1-249-429-11	CARBON	10K	5%	1/4W
R632	1-249-405-11	CARBON	100	5%	1/4W
R634	1-249-441-11	CARBON	100K	5%	1/4W
R635	1-249-419-11	CARBON	1.5K	5%	1/4W
R700	1-249-417-11	CARBON	1K	5%	1/4W
R701	1-249-438-11	CARBON	56K	5%	1/4W
R702	1-249-412-11	CARBON	390	5%	1/4W
R703	1-249-438-11	CARBON	56K	5%	1/4W
R704	1-249-425-11	CARBON	4.7K	5%	1/4W
R705	1-247-760-11	CARBON	4.7K	5%	1/4W
R706	△.1-247-700-11	CARBON	100	5%	1/4W F
R707	△.1-217-156-00	METAL PLATE	0.22	10%	5W
R708	1-249-417-11	CARBON	1K	5%	1/4W
R709	1-249-435-11	CARBON	33K	5%	1/4W
R710	1-247-727-11	CARBON	10	5%	1/2W
R711	1-249-455-11	CARBON	4.7	5%	1/4W
R712	1-249-437-11	CARBON	47K	5%	1/4W
R713	△.1-215-917-11	(E,AUS)...METAL OXIDE	1K	5%	3W F
R713	△.1-216-481-11	(US).....METAL OXIDE	1.2K	5%	3W F
R714	1-249-432-11	CARBON	18K	5%	1/4W
R715	1-249-437-11	CARBON	47K	5%	1/4W
R716	1-249-433-11	CARBON	22K	5%	1/4W
R717	1-249-441-11	CARBON	100K	5%	1/4W
R718	1-249-440-11	CARBON	82K	5%	1/4W
R719	△.1-247-747-11	CARBON	470	5%	1/2W F
R800	1-249-417-11	CARBON	1K	5%	1/4W
R801	1-249-438-11	CARBON	56K	5%	1/4W
R802	1-249-412-11	CARBON	390	5%	1/4W
R803	1-249-438-11	CARBON	56K	5%	1/4W
R804	1-249-425-11	CARBON	4.7K	5%	1/4W
R805	1-247-760-11	CARBON	4.7K	5%	1/2W
R806	△.1-247-700-11	CARBON	100	5%	1/4W F
R807	△.1-217-156-00	METAL PLATE	0.22	10%	5W
R808	1-249-417-11	CARBON	1K	5%	1/4W
R809	1-249-435-11	CARBON	33K	5%	1/4W
R810	1-247-727-11	CARBON	10	5%	1/2W
R811	1-249-455-11	CARBON	4.7	5%	1/4W
R812	1-249-438-11	CARBON	56K	5%	1/4W
R819	△.1-247-747-11	CARBON	470	5%	1/2W F
R900	1-249-425-11	CARBON	4.7K	5%	1/4W
R901	1-249-425-11	CARBON	4.7K	5%	1/4W
R902	△.1-247-696-11	(US)...CARBON	47	5%	1/4W F
RV100	1-238-017-11	RES, ADJ, CARBON	22K		(AM TUNED)
RV101	1-238-017-11	RES, ADJ, CARBON	22K		(FM TUNED)
RV200	1-238-956-11	RES, VAR, CARBON	100K/100K		(VOLUME)
RV201	1-238-734-11	RES, VAR, CARBON	100K		(BALANCE)
RV301	1-238-958-11	RES, VAR, SLIDE	250K/250K		(100Hz)
RV302	1-238-958-11	RES, VAR, SLIDE	250K/250K		(330Hz)
RV303	1-238-958-11	RES, VAR, SLIDE	250K/250K		(1kHz)
RV304	1-238-958-11	RES, VAR, SLIDE	250K/250K		(3.3kHz)
RV305	1-238-958-11	RES, VAR, SLIDE	250K/250K		(10kHz)

Ref.No.	Part No.	Description
RV400	1-238-016-11	RES, ADJ, CARBON 10K (PB LEVEL L)
RV401	1-238-016-11	RES, ADJ, CARBON 10K (PB LEVEL L)
RV402	1-238-016-11	RES, ADJ, CARBON 10K (REC LEVEL L)
RV403	1-238-020-11	RES, ADJ, CARBON 100K (BIAS L)
RV500	1-238-016-11	RES, ADJ, CARBON 10K (PB LEVEL R)
RV501	1-238-016-11	RES, ADJ, CARBON 10K (PB LEVEL R)
RV502	1-238-016-11	RES, ADJ, CARBON 10K (REC LEVEL R)
RV503	1-238-020-11	RES, ADJ, CARBON 100K (BIAS R)
RV504	1-238-013-11	RES, ADJ, CARBON 2.2K (HIGH SPEED)
RV505	1-238-012-11	RES, ADJ, CARBON 1K (NORMAL SPEED)
RV506	1-238-013-11	RES, ADJ, CARBON 2.2K (HIGH SPEED)
RV507	1-238-012-11	RES, ADJ, CARBON 1K (NORMAL SPEED)
RY1	1-515-720-11	RELAY
RY400	1-515-614-11	RELAY
RY700	1-515-501-00	RELAY
S401	1-572-046-11	SWITCH, PUSH (2 KEY) (TAPE SELECT DECK A/DOLBY NR)
S402	1-572-047-11	SWITCH, PUSH (2 KEY) (TAPE SELECT DECK B/DUBBING SPEED)
S601	1-554-303-21	SWITCH, KEY BOARD (TUNING -)
S602	1-554-303-21	SWITCH, KEY BOARD (TUNING +)
S603	1-554-303-21	SWITCH, KEY BOARD (0)
S604	1-554-303-21	SWITCH, KEY BOARD (1)
S605	1-554-303-21	SWITCH, KEY BOARD (2)
S606	1-554-303-21	SWITCH, KEY BOARD (3)
S607	1-554-303-21	SWITCH, KEY BOARD (4)
S608	1-554-303-21	SWITCH, KEY BOARD (5)
S609	1-554-303-21	SWITCH, KEY BOARD (6)
S610	1-554-303-21	SWITCH, KEY BOARD (7)
S611	1-554-303-21	SWITCH, KEY BOARD (8)
S612	1-554-303-21	SWITCH, KEY BOARD (9)
S613	1-554-303-21	SWITCH, KEY BOARD (MEMORY)
S614	1-554-303-21	SWITCH, KEY BOARD (ENTER)
S615	1-554-303-21	SWITCH, KEY BOARD (BAND FM/AM)
S616	1-554-303-21	SWITCH, KEY BOARD (MEMORY SCAN)
S617	1-554-303-21	SWITCH, KEY BOARD (AUTO TUNING)
S618	1-554-303-21	SWITCH, KEY BOARD (SYSTEM POWER)
S619	1-554-303-21	SWITCH, KEY BOARD (VIDEO/AUX)
S620	1-554-303-21	SWITCH, KEY BOARD (PHONO)
S621	1-554-303-21	SWITCH, KEY BOARD (TUNER)
S622	1-554-303-21	SWITCH, KEY BOARD (CD)
S623	1-554-303-21	SWITCH, KEY BOARD (TAPE)
S901	1-571-736-11	SWITCH, LEAF (FWD SW)
S902	1-571-736-11	SWITCH, LEAF (MOTOR SW)
S903	1-571-736-11	SWITCH, LEAF (FWD SW)
S904	1-571-736-11	SWITCH, LEAF (MOTOR SW)
S905	1-571-736-11	SWITCH, LEAF (REC SW)

Note: The components identified by mark **△** or dotted line with mark **△** are critical for safety. Replace only with part number specified.

Ref.No.	Part No.	Description
T1	△.1-449-994-11	(US)...TRANSFORMER, POWER
T1	△.1-449-995-11	(AUS)...TRANSFORMER, POWER
T1	△.1-450-137-11	(E).....TRANSFORMER, POWER
T2	△.1-449-299-11	(E,AUS)...TRANSFORMER, POWER
T2	1-449-993-21	(US).....TRANSFORMER, POWER
T100	1-404-807-11	TRANSFORMER, DISCRIMINATOR
T500	1-433-349-11	TRANSFORMER, BIAS OSCILLATION
TB1	1-535-140-00	(E)....BASE POST 22MM (10MM PITCH) 3P
TB1	1-535-142-00	(AUS)...BASE POST 22MM (10MM PITCH) 5P
TB2	*1-535-140-00	(US)...BASE POST 22MM (10MM PITCH) 3P
TB3	1-535-139-00	(AUS)...BASE POST 22MM (10MM PITCH) 2P
TB3	1-535-141-00	(E)....BASE POST 22MM (10MM PITCH) 4P
TB4	1-535-139-00	(US)...BASE POST 22MM (10MM PITCH) 2P
TB5	1-535-116-00	(E)...TERMINAL WITH BASE
TB100	1-537-238-21	TERMINAL BOARD (ANTENNA)
TB700	1-537-238-11	TERMINAL BOARD (SPEAKER)
TP101	*1-564-505-11	PLUG, CONNECTOR 2P
X100	1-577-075-11	OSCILLATOR, CERAMIC
X600	1-577-126-11	VIBRATOR, CRYSTAL
X601	1-577-358-21	VIBRATOR, CERAMIC
VH1	1-564-321-00	(E)...PIN, CINNECTOR 2P (VOLTAGE SELECTION)
VSI	△.1-571-515-11	(E)...SWITCH, POWER VOLTAGE SELECTION

ACCESSORY & PACKING MATERIAL

1-465-249-11	REMOTE COMMANDER (RM-S190)
1-501-374-11	ANTENNA, LOOP
2-128-529-11	COVER, BATTERY
3-751-543-11	(E).....MANUAL, INSTRUCTION (SEN)
3-751-543-21	(US,AUS)...MANUAL, INSTRUCTION (SEN)
*3-703-044-26	LABEL, CAUTION
*4-928-630-01	CUSHION

Note: The components identified by mark △ or dotted line with mark △ are critical for safety. Replace only with part number specified.

