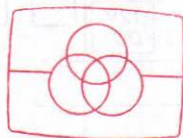


PS-LX45P

SERVICE MANUAL



Free service manuals
Gratis schema's

Digitized by

www.freesevicemanuals.info



AEP Model
UK Model
E Model

This set is the turntable system section in HST-D3 or HST-D4.

SPECIFICATIONS

Turntable

Platter	30 cm (12 in.), aluminum-alloy diecast
Motor	DC servo motor
Drive system	Belt drive
Speed	33 $\frac{1}{3}$ rpm, 45 rpm
Wow and flutter	0.15% (WRMS),
Signal-to-noise ratio	65 dB (DIN-B)
Automatic system	Return, reject, lead in.

Tonearm

Type	Dynamically balanced
Pivot-to-stylus length	206 mm (7 $\frac{7}{8}$ in.)
Overall arm length	235 mm (9 $\frac{3}{8}$ in.)

Cartridge

Type	Moving magnet type
Frequency response	20 Hz to 20 kHz
Stylus	Sony ND-155G (0.6 mil diamond)

General

Dimensions	Approx. 355 × 100 × 340 mm (w/h/d) (14 × 4 × 13 $\frac{1}{2}$ inches) incl. projecting parts and controls
Weight	Approx. 2.4 kg (5 lb 5 oz) net
Power requirements	Supplied from the HST-D3 or HST-D4

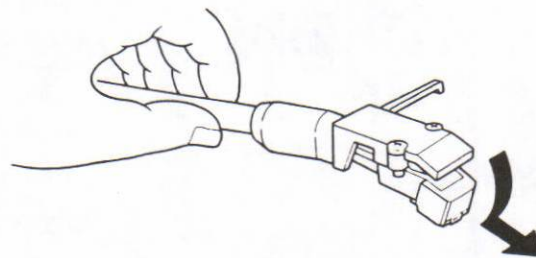
Note for Cartridge

Be careful not to use any cartridge except for specified one (Part No.: 1-549-133-11 VL-55G) as balance weight of pick up arm assy is fixed.

REPLACING THE STYLUS

The stylus will lose its effectiveness and begin to damage records after about 400 hours of use.

An ND-155G replacement stylus is available at your Sony dealer. Handle the stylus carefully as it is very delicate.



Be sure to turn off the POWER switch before replacing the stylus. Secure the tonearm to the arm rest, detach the stylus assembly by grasping it between the thumb and forefinger then insert the new stylus.

STEREO TURNTABLE SYSTEM
SONY®

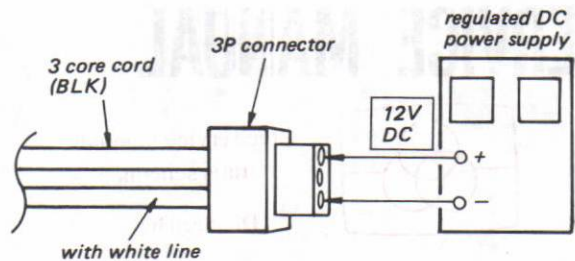


AUD

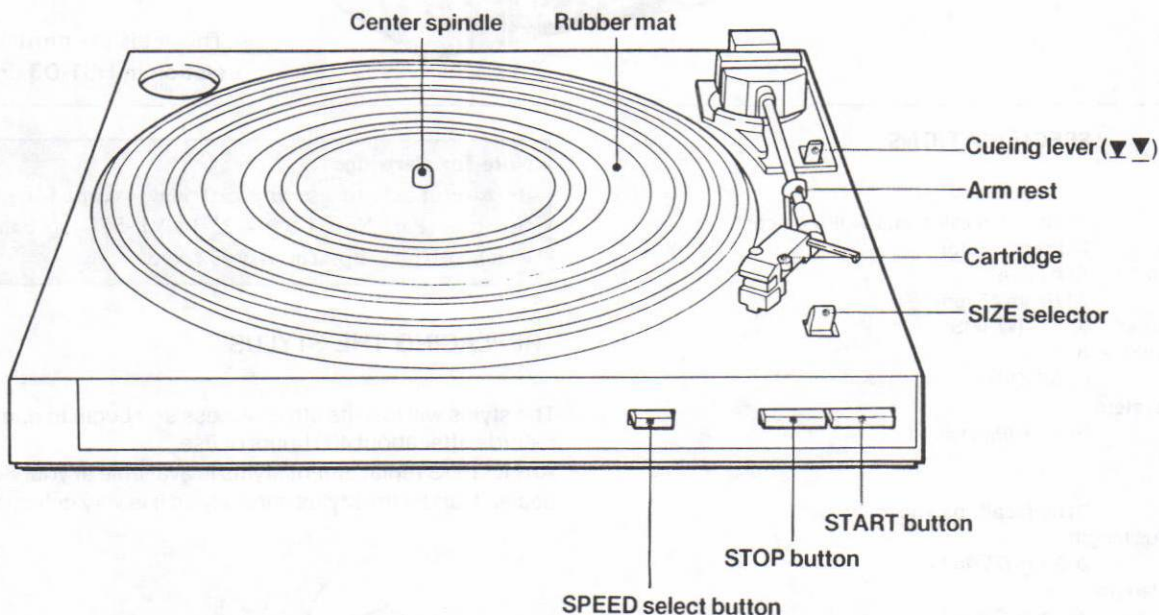
REPAIRING PRECAUTION

[To supply B+ voltage]

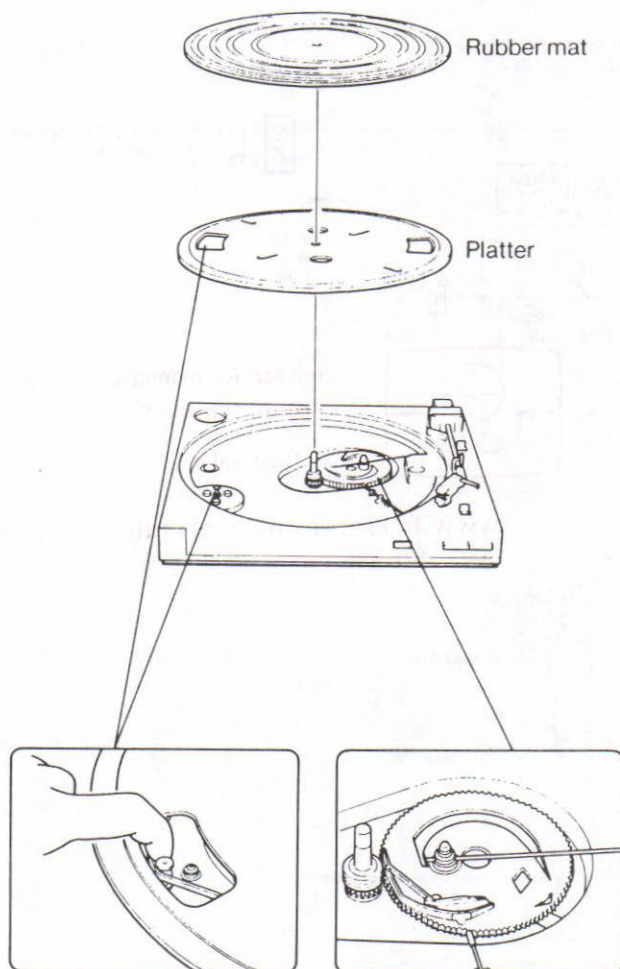
The power of this unit is fed from HST-D3 or D4. Because of this, connect the regulated power supply as illustrated right when this unit alone operates.



LOCATION AND FUNCTION OF CONTROLS



TURNTABLE ASSEMBLY



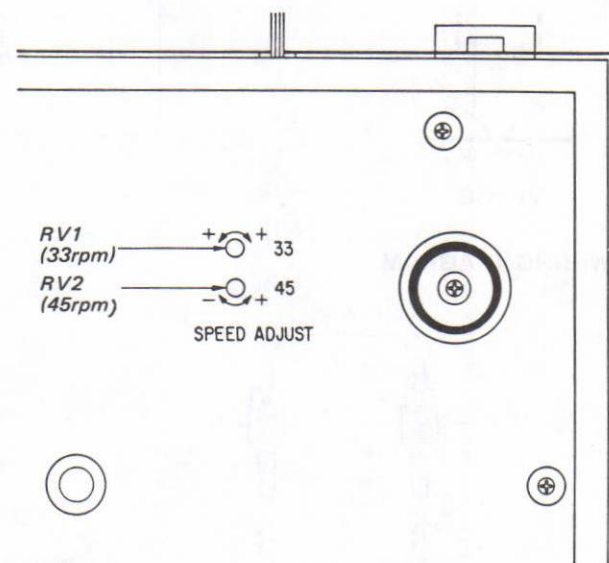
Hook the belt on the motor pulley.

If the belt is removed from the platter, replace it with the glossy side outward.

Speed Adjustment

Note: Be sure to perform 45rpm adjustment before 33 rpm.

1. Place a stroboscope board on the turntable sheet.
Press the START button.
Adjust RV2 so that the stripped pattern of stroboscope board is stationary.
2. Set the SPEED switch to 45.
Adjust RV1 in the same way.

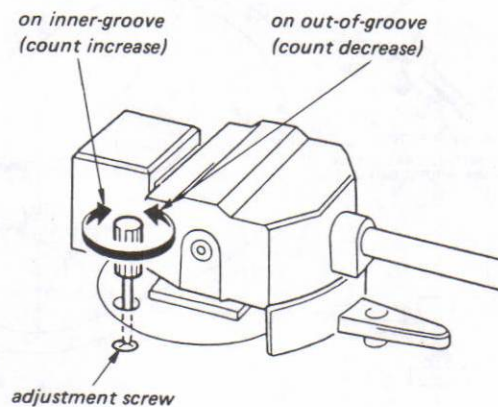


Stylus Drop-point Adjustment

1. Place a test record (YFSC-16) on the turntable sheet.
2. Set the SPEED switch to 33.
3. Press the START button.
4. By using a screwdriver, turn the adjustment screw so that the stylus tip drops on the record at the 7-17 counts position.
5. Move the arm to return detecting groove and confirm that the auto-return operation is started normally.

Note: The proper adjustment for a 30cm record is also correct for a 17cm record.

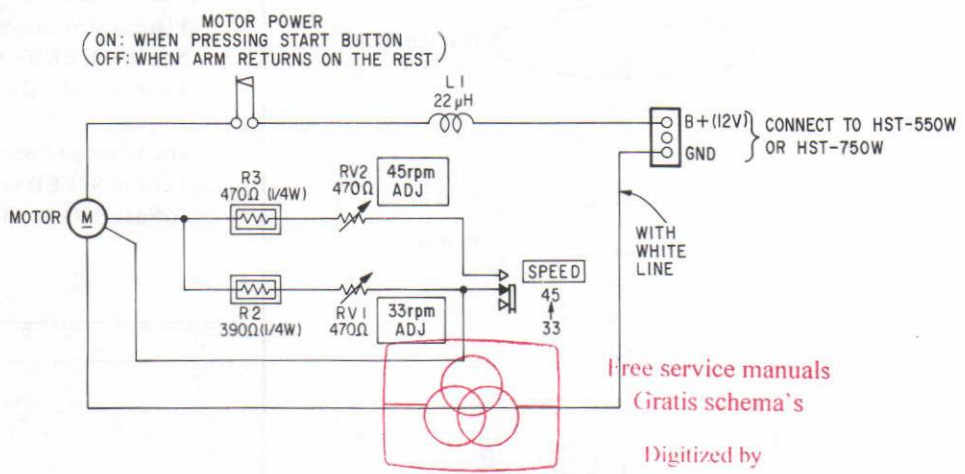
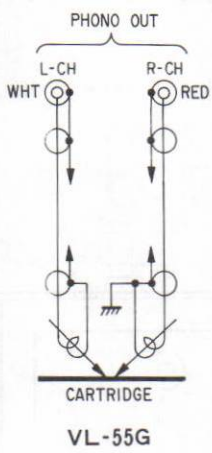
When turning adjustment screw, put the arm on the arm rest.



1 2 3 4 5 6 7 8

SCHEMATIC DIAGRAM

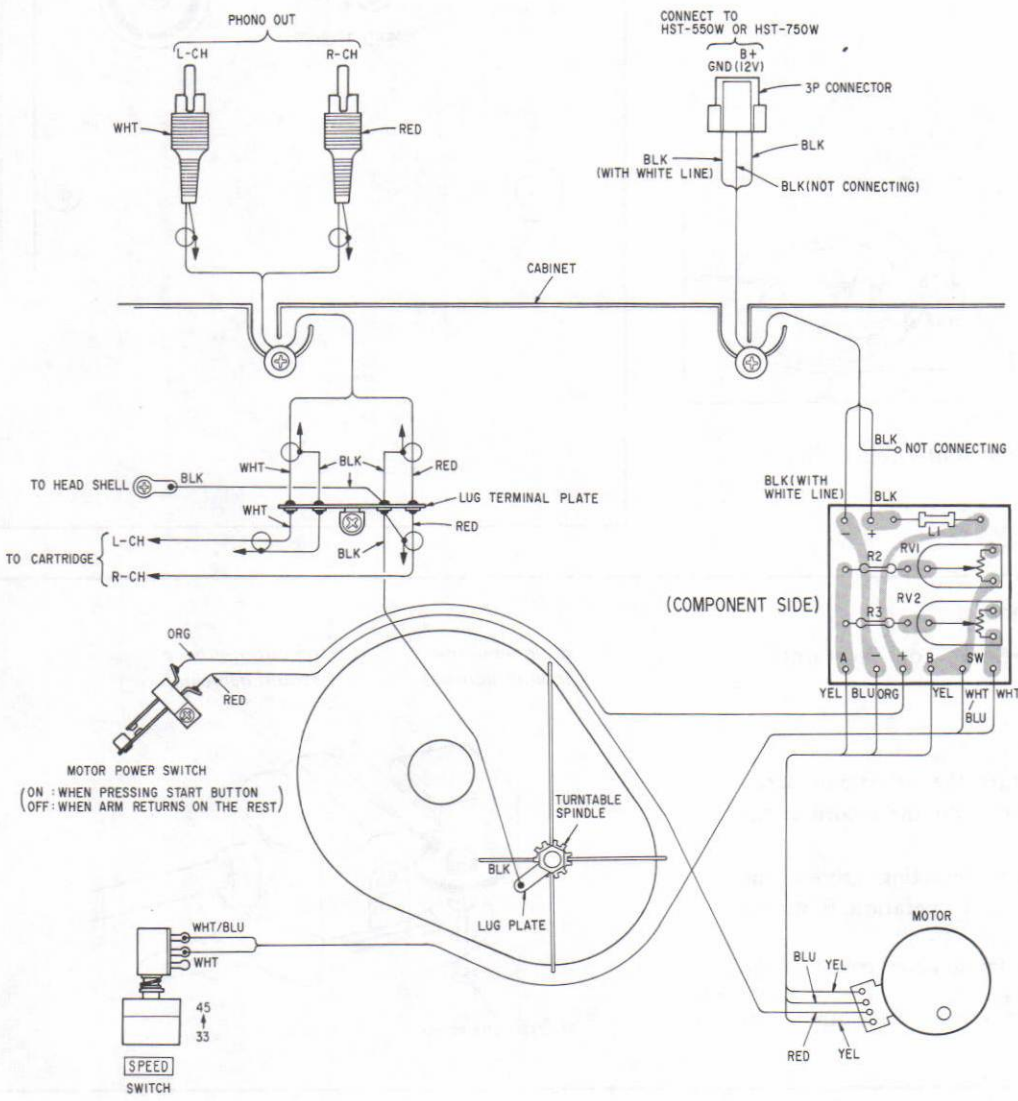
A
B
C
D
E
F
G
H
I
J



Free service manuals
Gratis schema's
Digitized by

www.freecservicemanuals.info

WIRING DIAGRAM

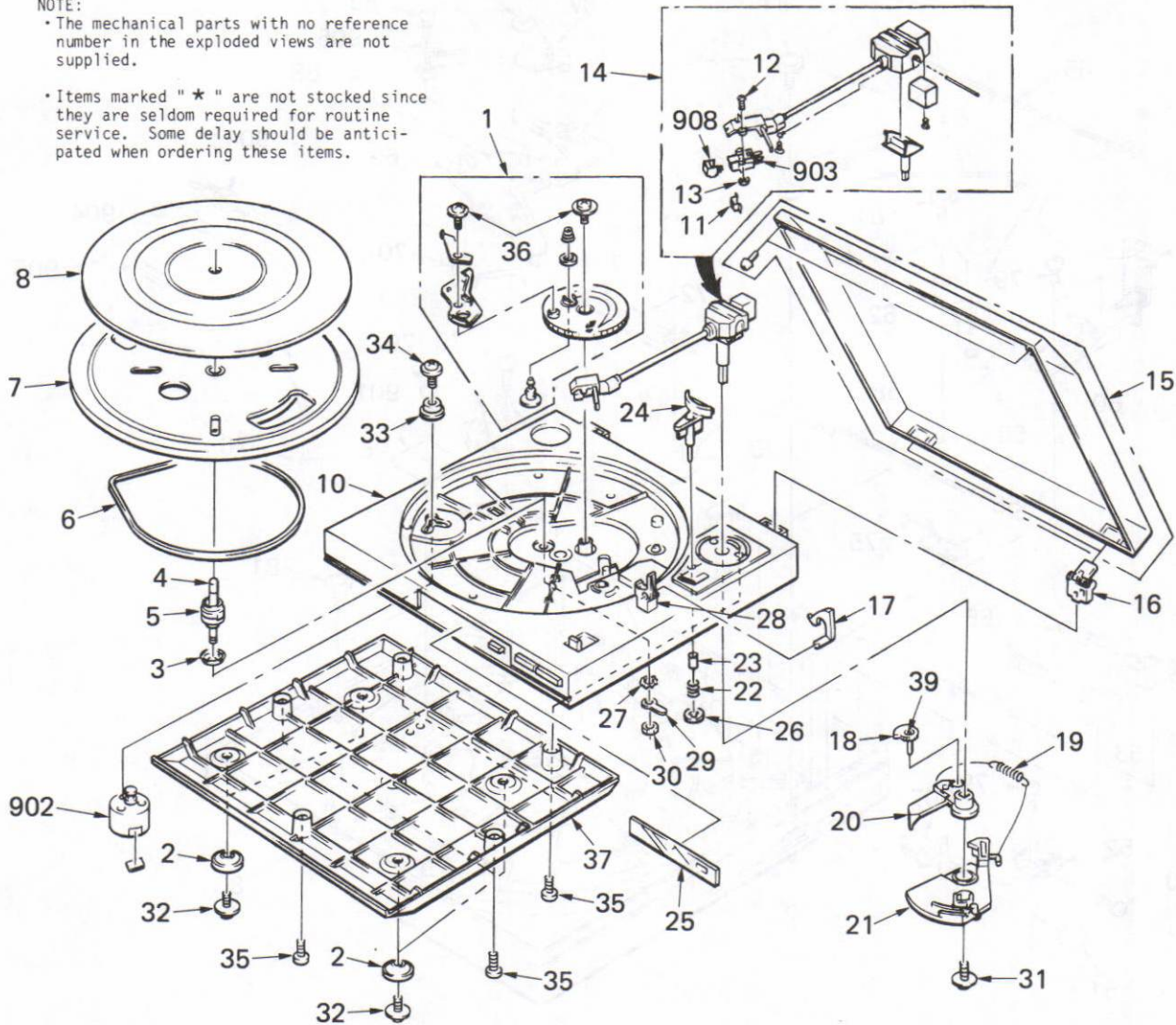


EXPLODED VIEW**NOTE:**

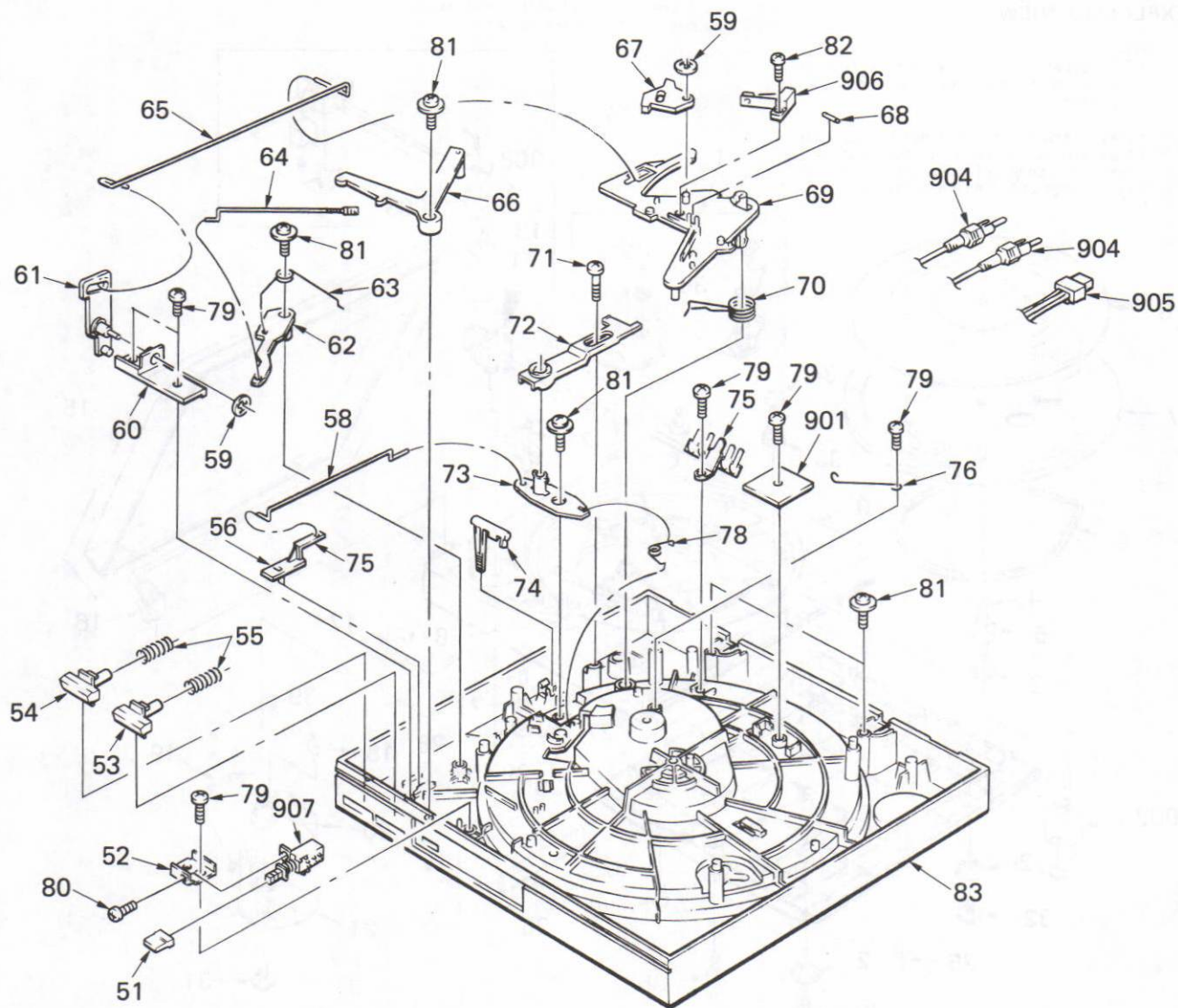
• The mechanical parts with no reference number in the exploded views are not supplied.

• Items marked " * " are not stocked since they are seldom required for routine service. Some delay should be anticipated when ordering these items.

• The construction parts of an assembled part are indicated with a collation number in the remark column.

**PARTS LIST**

No.	Part No.	Description	Remarks	No.	Part No.	Description	Remarks
1	X-4895-402-1	CAM GEAR ASSY		20	4-895-459-01	RETURN LINK (A)	
2	*4-895-435-01	FOOT		21	4-895-461-01	RETURN LINK (B)	
3	*4-895-404-01	SPINDLE WASHER		22	4-895-420-01	VISCOUS SPRING	
4	4-895-403-01	SPINDLE ASSY (W/T.T GEAR)		23	4-895-419-01	VISCOUS SHAFT	
5	4-895-489-01	GEAR, CENTER		24	*4-895-412-01	LIFT PLATFORM	
6	4-880-655-01	BELT		25	4-895-854-01	PANEL, FRONT	
7	X-4909-004-1	TURNTABLE		26	4-303-605-00	PUSH NUT DIA.3	
8	4-877-807-11	SHEET, TURNTABLE		27	4-895-443-01	W GOAR 0003 ZN3A	
10	*4-895-855-01	CABINET		28	4-895-417-01	P.U. REST	
11	4-895-474-01	CARTRIDGE COVER		29	4-895-444-01	EARTH TERMINAL (B)	
12	7-621-775-20	2-BID 2610 ZN3K		30	4-895-445-01	NUT 50 ZN3A	
13	4-895-472-01	NUT 26 ZN3K		31	4-895-454-01	7-BID 3012 ZN3A 12D	
14	X-4895-403-1	PICK UP ARM ASSY		32	4-895-430-01	7-BID 3008 ZN3A 12D	
15	4-895-480-01	DUST COVER ASSY		33	4-895-414-01	GROMMET (A)	
16	4-895-410-01	HINGE ASSY		34	4-895-413-01	SCREW	
17	4-895-418-01	P.U. TUBE HOOK		35	4-895-860-01	SCREW	
18	4-895-458-01	ADJUST CAM		36	7-685-646-79	7-BID 3008 ZN3A	
19	4-895-460-01	ADJUST SPRING		37	*4-895-859-01	BOARD, BOTTOM	
				39	4-895-456-01	TRIP CLUTCH SPRING	



PARTS LIST

No.	Part No.	Description	Remarks	No.	Part No.	Description	Remarks
51	4-895-450-01	SPEED BUTTON		66	4-895-446-01	CONTROL LEVER	
52	*4-895-449-01	SW. HOLDER		67	4-895-441-01	CAM	
53	4-895-853-01	BUTTON, STOP		68	4-895-429-01	SECURING RUBBER	
54	4-895-852-01	BUTTON, START		69	4-895-436-01	CONTROL ARM	
55	4-895-448-01	CONTROL BUTTON SPRING		70	4-895-437-01	CONTROL ARM SPRING (3)	
56	4-895-429-01	SECURING RUBBER (1)		71	4-895-422-01	7-BID 3006 ZN3A 10D	
57	4-895-857-01	KNOB		72	4-895-428-01	SIZE SELECTOR	
58	*4-895-858-01	WIRE, SELECTOR		73	4-895-425-01	SIZE SELECTOR HOLDER	
59	4-895-442-01	PUSH NUT DIA.3		74	4-895-421-01	CUE LEVER	
60	4-895-447-01	CONTROL HOLDER		75	*4-895-423-01	LUG TERMINAL	
61	4-895-431-01	CONTROL LEVER FOR START		76	4-895-484-01	WIRE, CONTROL ARM	
62	4-895-433-01	REJ ST LEVER		77	*4-895-855-01	CABINET	
63	4-895-434-01	SHIFT SPRING (2)		78	4-895-424-01	SPEED SHIFT CAM SPRING (1)	
64	4-895-856-01	SPRING		80	7-621-775-20	2-BID 2605 ZN3A	
65	*4-895-432-01	CONTROL WIRE		81	4-895-430-01	7-BID 3008 ZN3A 12D	
				82	7-685-649-14	7-BID 3014 ZN3A	

ELECTRICAL PARTS

NOTE:

- Items marked " * " are not stocked since they are seldom required for routine service. Some delay should be anticipated when ordering these items.
- If there are two or more same circuits in a set such as a stereophonic machine, only typical circuit parts may be indicated and capacitors and resistors in other same circuits may be omitted.

CAPACITORS:

MF:μF, PF:μμF.

RESISTORS

- All resistors are in ohms.
- F : nonflammable

COILS

• MMH : mH, UH : μH

SEMICONDUCTORS

In each case, U : μ, for example:

UA...: μA..., UPA...: μPA..., UPC...: μPC,

UPD...: μPD...

ELECTRICAL PARTS

<u>Ref.No.</u>	<u>Part No.</u>	<u>Description</u>
902	1-541-331-11	MOTOR
903	1-549-133-11	CARTRIDGE (VL-55G)
904	1-558-595-11	CORD, CONNECTION
905	1-558-596-11	CORD, CONNECTION (3 CORE)
906	1-570-666-11	SWITCH, LEAF
907	1-570-687-11	SWITCH, PUSH (1 KEY)(SPEED)
908	1-549-132-11	STYLUS (ND-155D)
L1	1-408-121-00	MICRO INDUCTOR 22UH
R2	1-247-707-11	CARBON 390 5% 1/4W F
R3	1-247-708-11	CARBON 470 5% 1/4W F
RV1	1-228-719-00	RES, ADJ, CARBON 470
RV2	1-228-719-00	RES, ADJ, CARBON 470

ACCESSORY & PACKING MATERIAL

<u>Part No.</u>	<u>Description</u>
3-701-806-00	ADAPTOR, 45
4-895-476-01	SNOW BOX (R)
4-895-477-01	SNOW BOX (L)
4-895-478-01	INNER PLATE
4-895-483-01	SLEEVE, DUST COVER
4-895-862-01	BAG (SET), POLYETHYLENE
4-895-863-01	BAG (MAT), POLYETHYLENE

ELECTRICAL PARTS

1. Power Transformer
 2. Rectifier
 3. Filter
 4. Tuning Indicator
 5. Loudspeaker
 6. Headset
 7. Earphone
 8. Headset
 9. Earphone
 10. Headset
 11. Earphone
 12. Headset
 13. Earphone
 14. Headset
 15. Earphone
 16. Headset
 17. Earphone
 18. Headset
 19. Earphone
 20. Headset

REPAIR PARTS LIST

Part No.	Part Name	Quantity	Remarks
1	Power Transformer	1	
2	Rectifier	1	
3	Filter	1	
4	Tuning Indicator	1	
5	Loudspeaker	1	
6	Headset	1	
7	Earphone	1	
8	Headset	1	
9	Earphone	1	
10	Headset	1	
11	Earphone	1	
12	Headset	1	
13	Earphone	1	
14	Headset	1	
15	Earphone	1	
16	Headset	1	
17	Earphone	1	
18	Headset	1	
19	Earphone	1	
20	Headset	1	

REPAIR PARTS LIST

Part No.	Part Name	Quantity	Remarks
1	Power Transformer	1	
2	Rectifier	1	
3	Filter	1	
4	Tuning Indicator	1	
5	Loudspeaker	1	
6	Headset	1	
7	Earphone	1	
8	Headset	1	
9	Earphone	1	
10	Headset	1	
11	Earphone	1	
12	Headset	1	
13	Earphone	1	
14	Headset	1	
15	Earphone	1	
16	Headset	1	
17	Earphone	1	
18	Headset	1	
19	Earphone	1	
20	Headset	1	