

# STR-DE205

## SERVICE MANUAL



AEP Model

Free service manuals  
Gratis schema's

Digitized by

www.freeservicemanuals.info



### SPECIFICATIONS

#### Amplifier section

**Power output** (DIN 1 kHz, 4 ohms)  
40 W + 40 W

**Frequency response** PHONO: RIAA  
equalization curve  
±0.5 dB  
CD, TAPE/MD, VIDEO:  
10 Hz - 50 kHz ±1 dB

#### Inputs

	Sensitivity	Impedance	S/N (weighting network, input level)
PHONO (MM)	2.5 mV	50 kilohms	74 dB 72 dB* (A, 2.5 mV)
CD	200 mV		
TAPE/ MD, TV, VIDEO	150 mV	50 kilohms	82 dB 82 dB* (A, 150 mV)

\* '78 IHF

#### Outputs

TAPE/MD REC OUT:  
Voltage 150 mV,  
Impedance 10 kilohms

VIDEO AUDIO OUT:  
Voltage 150 mV,  
Impedance 10 kilohms

PHONES: Accepts low  
and high impedance  
headphones

#### Muting

Full mute

#### BASS BOOST

+10 dB at 70 Hz

#### TONE

±8 dB at 100 Hz and  
10 kHz

#### FM tuner section

**Tuning range** 87.5 - 108.0 MHz

**Aerial terminals** 75 ohms, unbalanced

**Sensitivity** Mono: 18.3 dBf, 2.2 μV  
/75 ohms  
Stereo: 38.3 dBf, 22.5 μV  
/75 ohms

**Usable sensitivity** 11.2 dBf, 1 μV  
/75 ohms (IHF)

**S/N** Mono: 76 dB  
Stereo: 70 dB

**Harmonic distortion at 1 kHz** Mono: 0.3 %  
Stereo: 0.5 %

**Separation** 45 dB at 1 kHz

**Frequency response** 30 Hz - 15 kHz<sup>+0.5</sup><sub>-2</sub> dB

**Selectivity** 60 dB at 400 kHz

#### AM tuner section

**Tuning range** 522 - 1611 kHz

**Aerial** Loop aerial

**Usable sensitivity** 50 dB/m (at 999 kHz)

**S/N** 54 dB (at 50 mV/m)

**Harmonic distortion** 0.5 % (50 mV/m,  
400 Hz)

**Selectivity** 35 dB

#### General

**System** Tuner section: PLL  
quartz-locked digital  
synthesizer system

**Preamplifier section:**  
Low-noise NF type  
equalizer

**Power amplifier section:**  
Pure-complimentary  
SEPP

**Power requirements** 220-230 V AC, 50/60 Hz

**Power consumption** 100 W

**Dimensions** 430 x 145 x 300 mm  
(17 x 5<sup>3</sup>/<sub>4</sub> x 11<sup>3</sup>/<sub>4</sub>  
inches)

**Mass (Approx.)** 5.1 kg (11 lb 3 oz)

**Supplied accessories** FM wire aerial (1)  
AM loop aerial (1)  
Remote controller  
(remote) (1)  
Size AA (R6) batteries (2)

Design and specifications are subject to  
change without notice.



FM STEREO/FM-AM RECEIVER  
**SONY**®



# TABLE OF CONTENTS

- specifications .....1
- 1. GENERAL**
  - Location and Function of controls .....3
- 2. EXPLANATION OF IC TERMINALS** .....4
- 3. DIAGRAMS**
  - 3-1. Circuit Boards Location .....6
  - 3-2. Printed Wiring Boards (Main Section).....7
  - 3-3. Schematic Diagram (Main Section) .....11
  - 3-4. Schematic Diagram (Display Section) .....15
  - 3-5. Printed Wiring Boards (Display Section).....19
- 4. EXPLODED VIEWS**
  - 4-1. Front panel Section .....22
  - 4-2. Chassis Section .....23
- 5. ELECTRICAL PARTS LIST** .....24

### SAFETY-RELATED COMPONENT WARNING!!

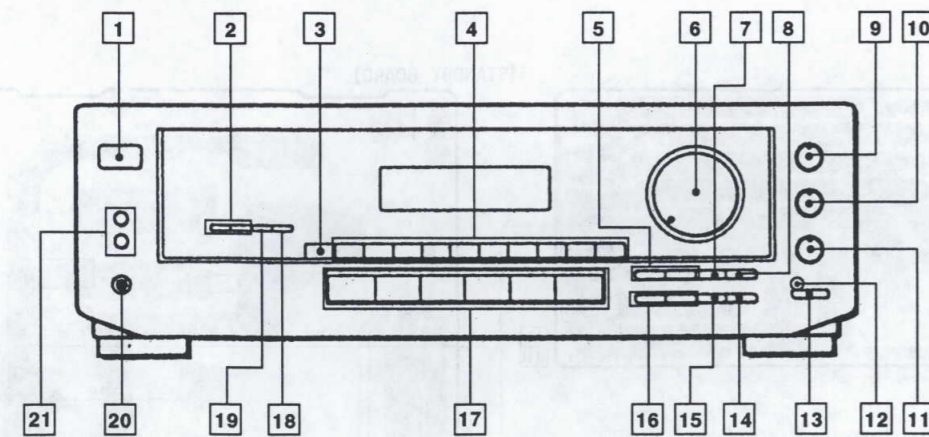
COMPONENTS IDENTIFIED BY MARK  OR DOTTED LINE WITH MARK  ON THE SCHEMATIC DIAGRAMS AND IN THE PARTS LIST ARE CRITICAL TO SAFE OPERATION. REPLACE THESE COMPONENTS WITH SONY PARTS WHOSE PART NUMBERS APPEAR AS SHOWN IN THIS MANUAL OR IN SUPPLEMENTS PUBLISHED BY SONY.



**SECTION 1  
GENERAL**

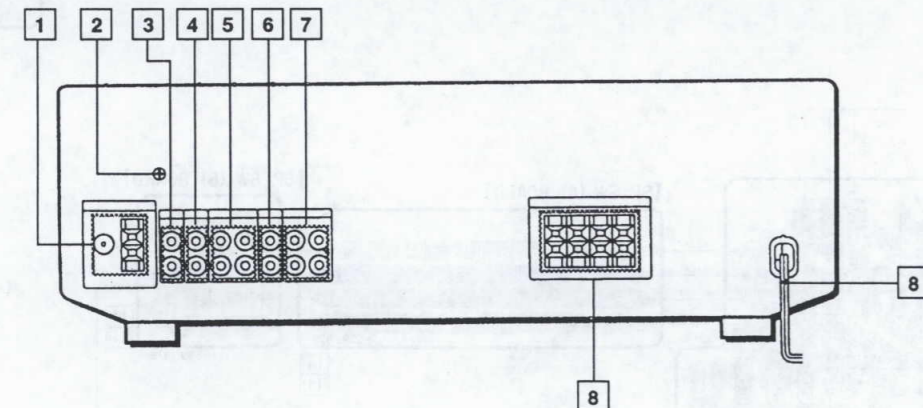
**LOCATION AND FUNCTION OF CONTROLS**

**[FRONT PANEL]**



- |                              |                                 |
|------------------------------|---------------------------------|
| 1 POWER switch               | 12 BASS BOOST indicator         |
| 2 RDS buttons                | 13 BASS BOOST button            |
| 3 DIRECT button              | 14 MEMORY button                |
| 4 Numeric button             | 15 FM/AM button                 |
| 5 PRESET TUNING +, - buttons | 16 TUNING/CHARACTER +, - button |
| 6 VOLUME control             | 17 Function buttons             |
| 7 SHIFT button               | 18 CHARACTER button             |
| 8 FM MODE button             | 19 DISPLAY button               |
| 9 BASS control               | 20 PHONES jack                  |
| 10 TREBLE control            | 21 SPEAKERS ON/OFF switch       |
| 11 BALANCE control           |                                 |

**[REAR PANEL]**



- |                   |                |
|-------------------|----------------|
| 1 ANTENNA (AM/FM) | 8 TV           |
| 2 ground terminal | 7 VIDEO        |
| 3 PHONO           | 8 Mains lead   |
| 4 CD              | 9 SPEAKERS A/B |
| 5 TAPE/MD         |                |

**SECTION 2  
EXPLANATION OF IC TERMINALS**

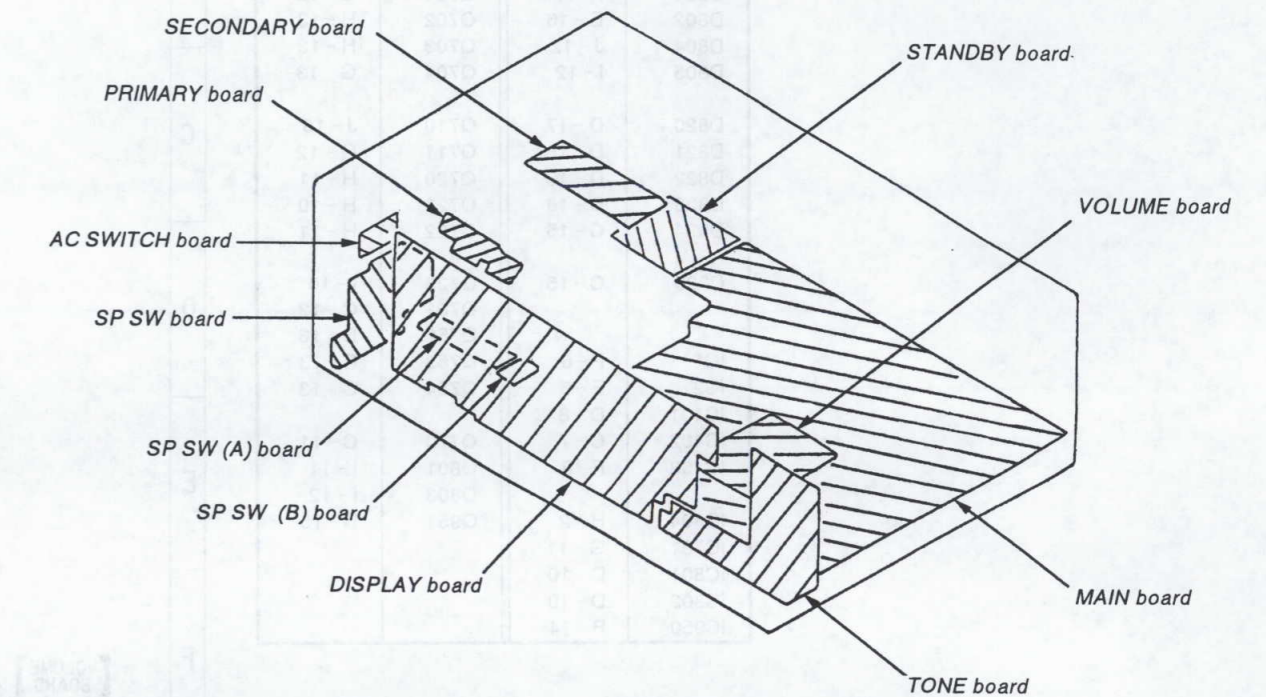
IC201 (  $\mu$  PD78044AGF-165-3B9)

Pin No.	Pin name	I/O	Description	
1	DIG7	O		
2	DIG6	O		
3	DIG5	O		
4	DIG4	O	Fluorescent indicator tube drive.	
5	DIG3	O		
6	DIG2	O		
7	DIG1	O		
8	+5V	-		Power supply (+5V).
9	S. CLK	I		System clock.
10	S. DATA	I		System data.
11	PLL. DATA	I	PLL data input from TU001.	
12	S. CE (LC7288)	O	Chip enable output.	
13	S. CE (LV100)	-	Not used (Open).	
14	VERISON	I	Input for model select.	
15	PROTECT	I	Protector detect input.	
16	BRIDGE	-	Not used (Open).	
17	RESET	I	System reset terminal.	
18	AUTO-STOP	I	Auto stop detect input.	
19	STEREO-IN	I	Stereo detect input.	
20	AVss	-	Ground.	
21	SP-RY	O	Speaker relay drive.	
22	SURR-RY	-	Not used (Open).	
23	POWER-RY	O	Power relay drive.	
24	DOWN	O	Volume down control.	
25	UP	O	Volume up control.	
26	SIGNAL	I	A/D signal input terminal.	
27	A/D2	I	A/D2 key input terminal.	
28	A/D1	I	A/D1 key input terminal.	
29	AVDD	-	Power supply (+5V).	
30	AV. REF	-	Reference voltage (+5V).	
31	GND	-	Ground.	
32	NC	-	Not used (Open).	
33	Vss	-	Ground.	
34	X1	-	System clock (4.19MHz).	
35	X2	-	System clock (4.19MHz).	
36	IC. MUTE	O	Mute drive output for $\mu$ PD2581 (IC701).	
37	HALL	-	Not used (Open).	
38	THEATER	-	Not used (Open).	
39	PROLOGIC	-	Not used (Open).	
40	T. MUTE	O	Tuner mute drive output.	

Pin No.	Pin name	I/O	Description
41	VIDEO	-	Not used (Open).
42	TV/LD	-	Not used (Open).
43	STANDBY	O	Standby LED drive.
44	SYS. POWER	I	System power ON/OFF.
45	RDS. DATA. IN	I	RDS data input.
46	RDS. CLK. IN	I	RDS clock signal input.
47	STOP	I	Stop signal input from NJM2103D (IC950).
48	Vss	-	Ground.
49	SIRCS	I	SIRCS signal input.
50	POWER SW	I	Power switch input terminal.
51	NC	-	Not used (Open).
52	+5V	-	Power supply (+5V).
53	BASS BOOST	-	Bass boost LED drive.
54	FUNC. MUTE	O	Line mute drive.
55	NC	-	Connect to ground.
56	K15	I	Key in 5.
57	K14	I	Key in 4
58	K13	I	Key in 3
59	K12	I	Key in 2
60	K11	I	Key in 1.
61	GND	-	Ground.
62	S15	O	Key out 15.
63	S14	O	Key out 14.
64	S13	O	Key out 13.
65	S12	O	Key out 12.
66	S11	O	Key out 11.
67	S10	O	Key out 10.
68	S9	O	Key out 9.
69	S8	O	Key out 8.
70	S7	O	Key out 7.
71	VLOAD	-	Connect to ground.
72	S6	O	Key out 6.
73	S5	O	Key out 5.
74	S4	O	Key out 4.
75	S3	O	Key out 3.
76	S2	O	Key out 2.
77	S1	O	Key out 1.
78	DIG10	O	Fluorescent indicator tube drive.
79	DIG9	O	
80	DIG8	O	

**SECTION 3  
DIAGRAMS**

**3-1. CIRCUIT BOARDS LOCATION**

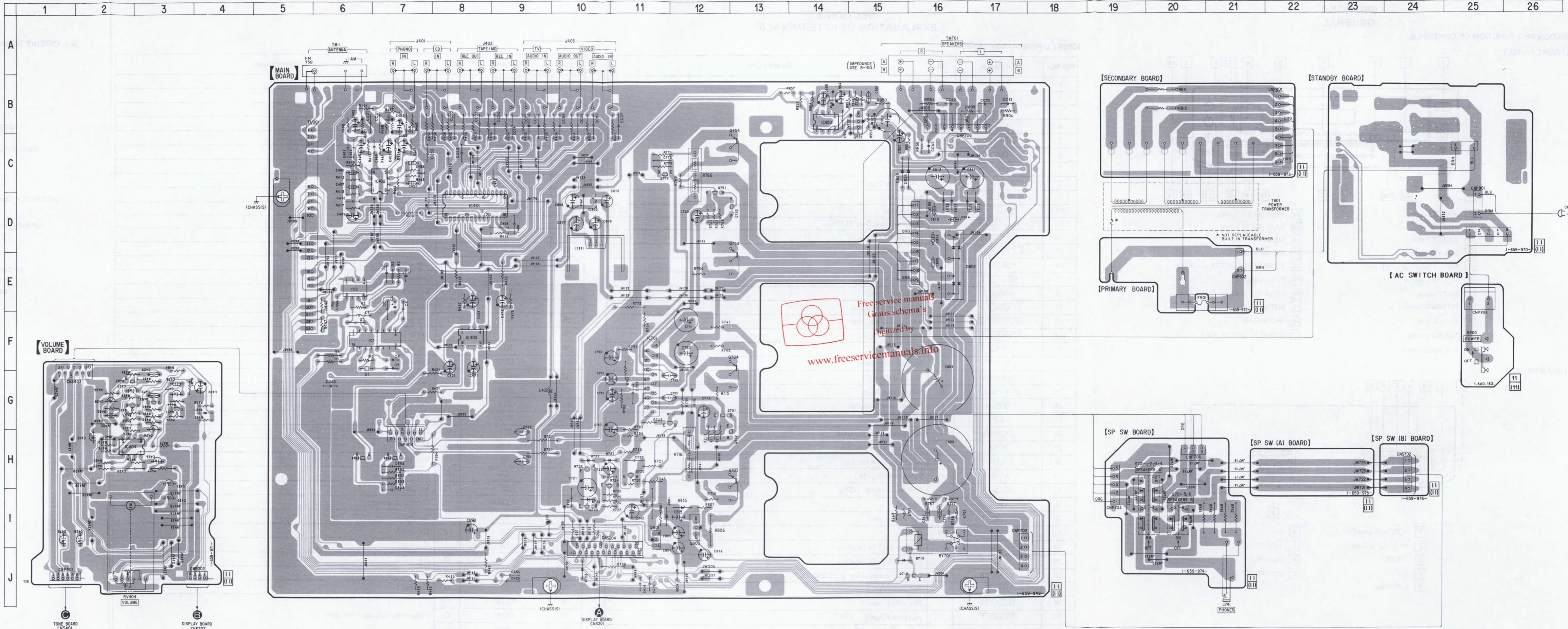




3-2. PRINTED WIRING BOARDS (MAIN SECTION)

• SEMICONDUCTOR LOCATION

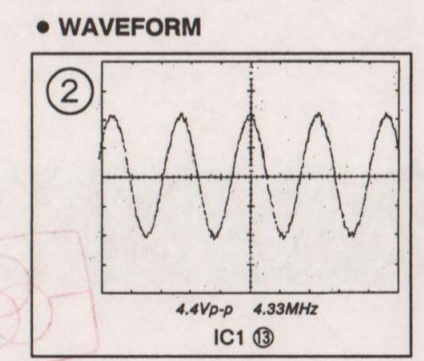
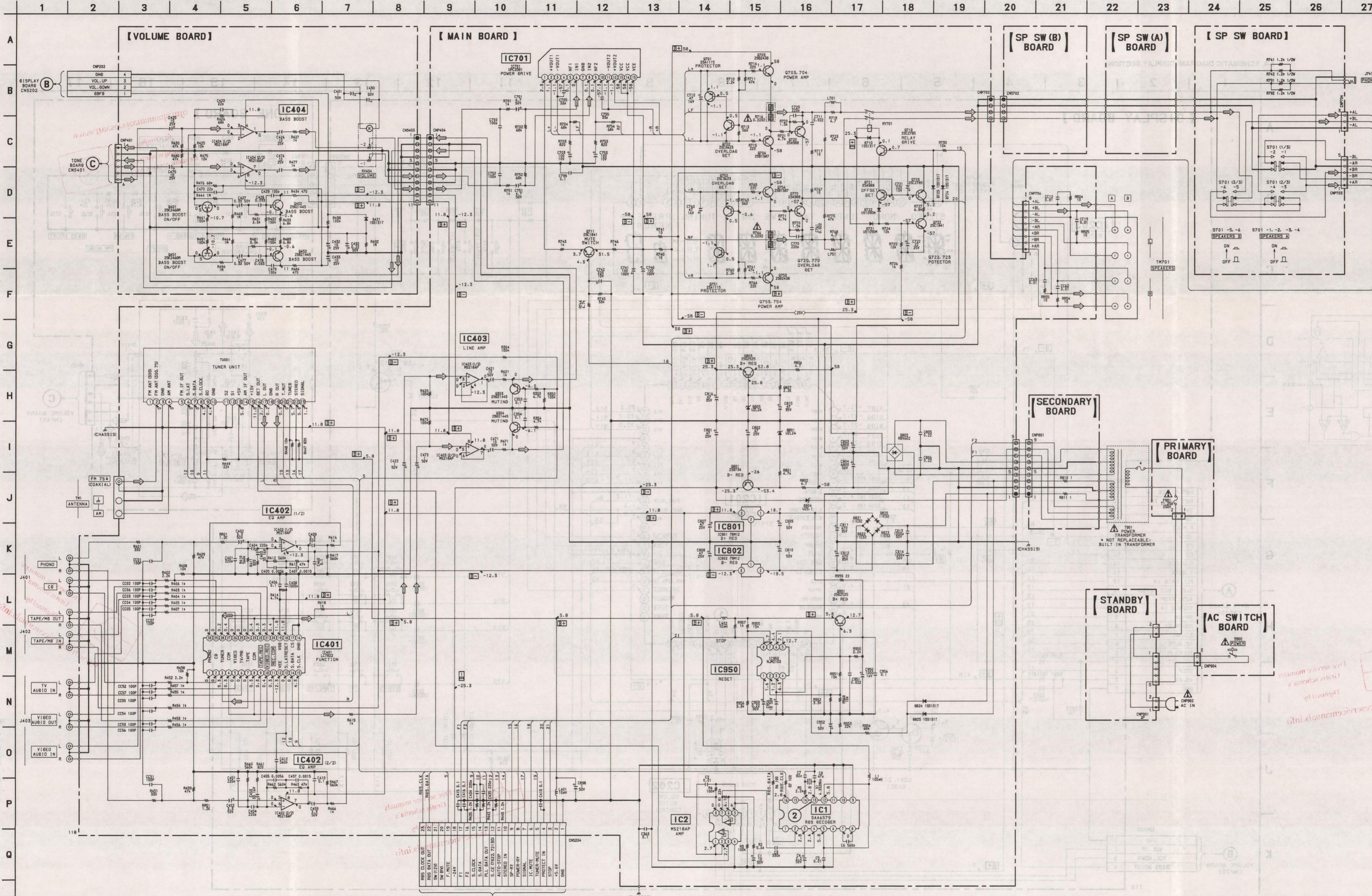
Ref. No.	Location	Ref. No.	Location
D421	G - 4	Q303	H - 6
D710	J - 15	Q304	H - 7
D721	H - 11	Q401	G - 2
D722	H - 10	Q402	G - 2
D723	J - 10	Q451	G - 3
D724	I - 10	Q452	G - 3
D801	I - 11	Q701	G - 12
D802	E - 16	Q702	H - 13
D804	J - 12	Q703	H - 13
D805	I - 12	Q704	G - 13
D820	D - 17	Q710	J - 16
D821	D - 16	Q711	G - 12
D822	D - 16	Q720	H - 11
D823	D - 16	Q721	H - 10
D824	C - 15	Q722	H - 11
D825	C - 15	Q723	I - 10
		Q751	C - 12
		Q752	D - 13
		Q753	E - 13
		Q754	C - 13
IC1	F - 6	Q770	C - 11
IC2	E - 6	Q801	I - 11
IC401	D - 8	Q803	I - 12
IC402	C - 7	Q951	B - 15
IC403	F - 8		
IC404	H - 2		
IC701	G - 11		
IC801	D - 10		
IC802	D - 10		
IC950	B - 14		



Note:  
 ○ : parts extracted from the component side.  
 ● : parts extracted from the conductor side.  
 [Pattern] : Pattern from the side which enables seeing.  
 (The other layers' patterns are not indicated)

Free service manuals  
 Gratis schema's  
 Digitized by  
[www.freeremove.com](http://www.freeremove.com)





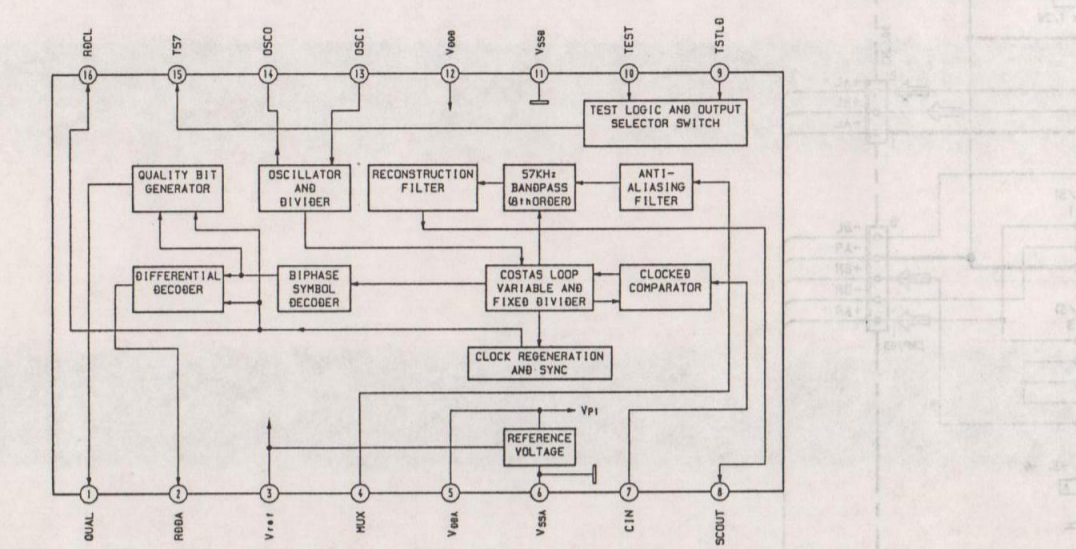
- Note :
- All capacitors are in  $\mu$ F unless otherwise noted, pF:  $\mu$  F 50WV or less are not indicated except for electrolytics and tantalums.
  - All resistors are in  $\Omega$  and  $\frac{1}{4}$ W or less unless otherwise specified.
  - : nonflammable resistor.
  - : panel designation.
- Note : The components identified by mark or dotted line with mark are critical for safety. Replace only with part number specified.
- : B+ Line
  - : B- Line
  - Voltage and waveforms are dc with respect to ground under no-signal conditions.
  - no mark: FM
  - Voltages are taken with a VOM (Input impedance 10M  $\Omega$ ). Voltage variations may be noted due to normal production tolerances.
  - Waveforms are taken with a oscilloscope. Voltage variations may be noted due to normal production tolerances.
  - Circled numbers refer to waveforms.
  - Signal path
  - : FM



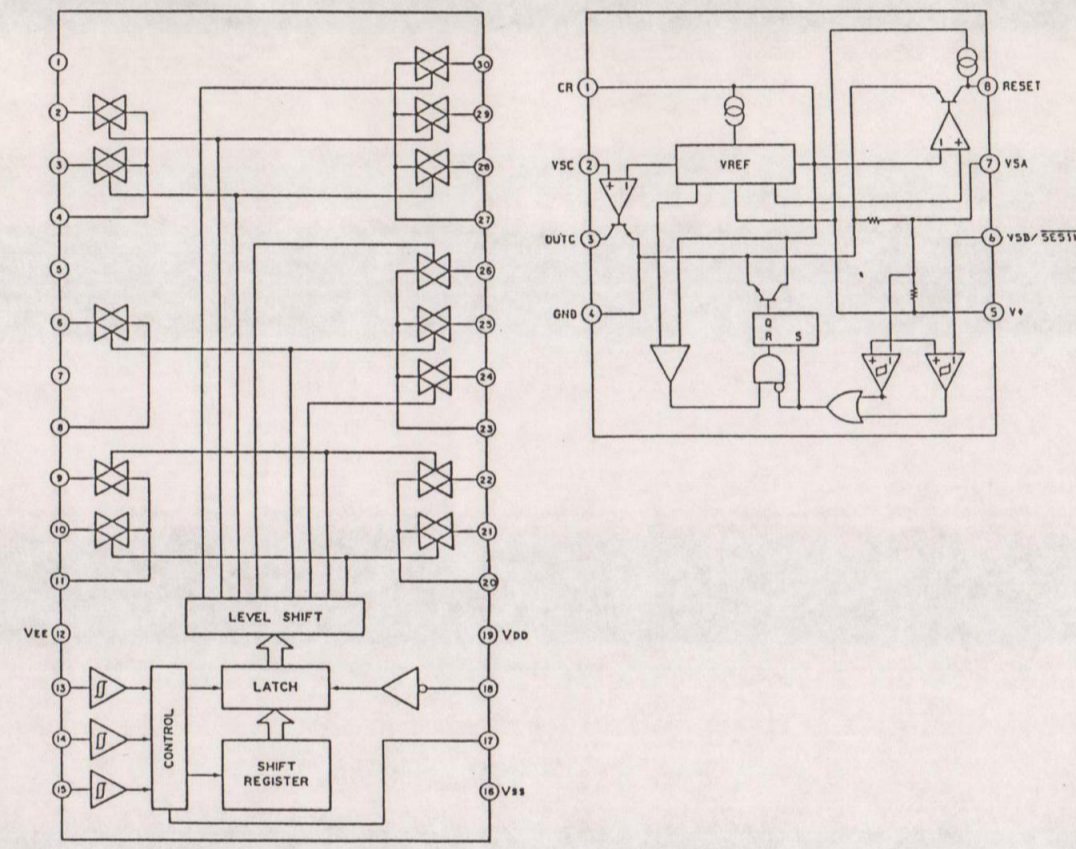
IC BLOCK DIAGRAMS - MAIN SECTION -

3-4. SCHEMATIC DIAGRAM (DISPLAY SECTION)

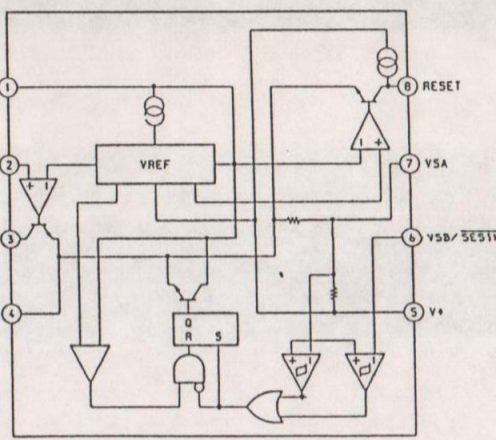
IC1 SAA6579



IC401 LC7822

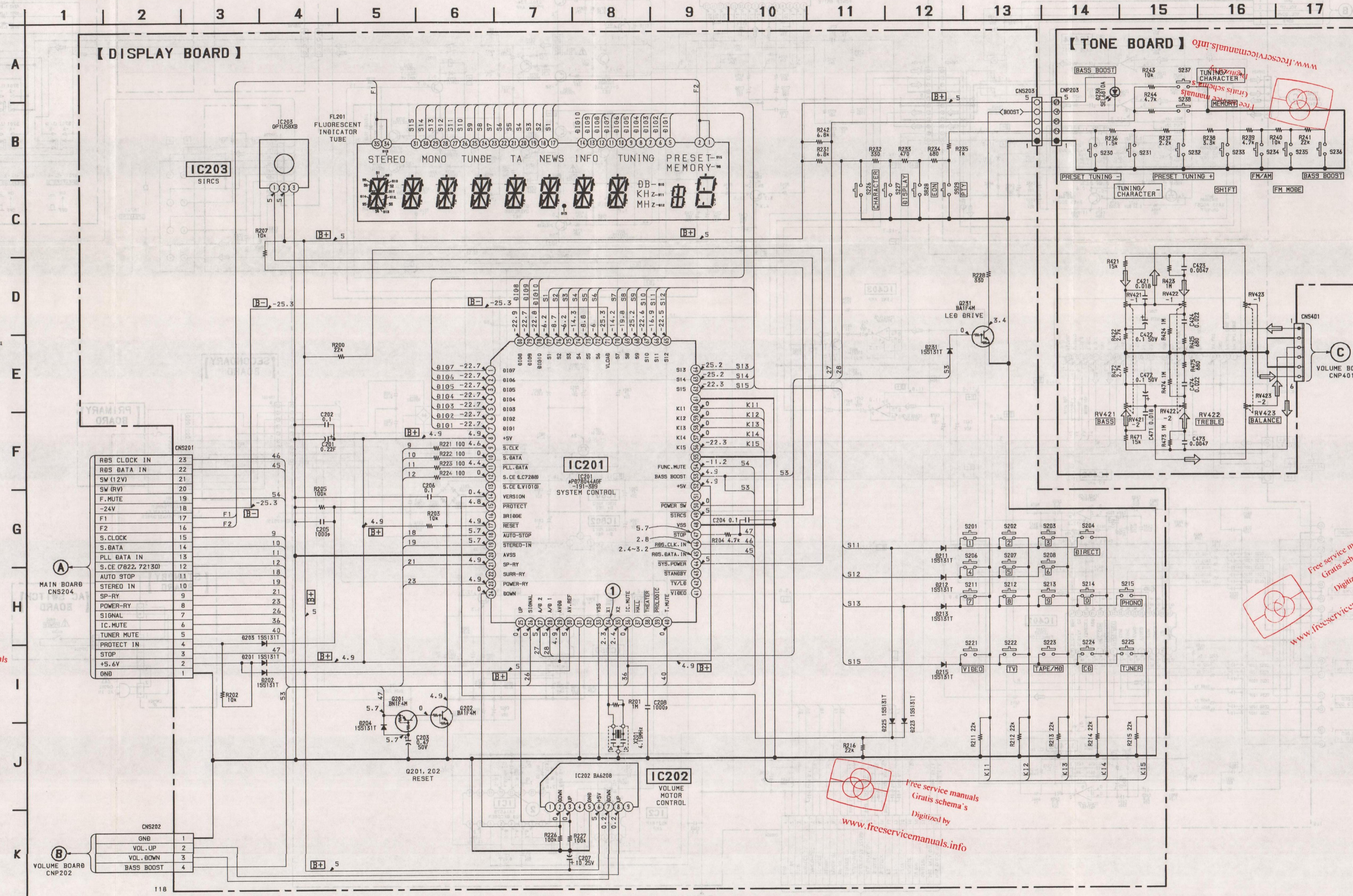
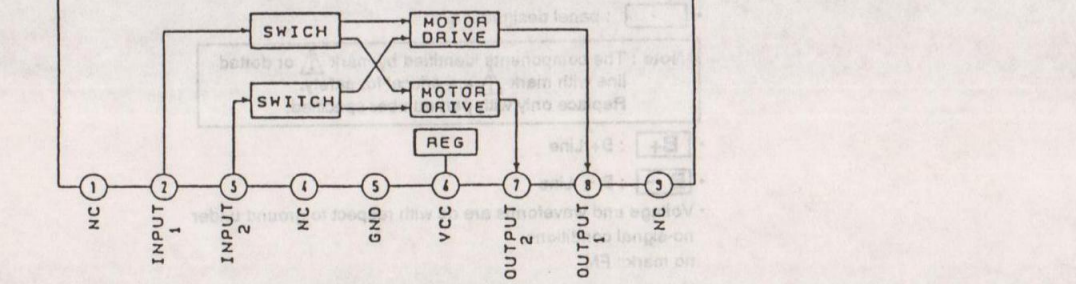


IC950 NJM2103D

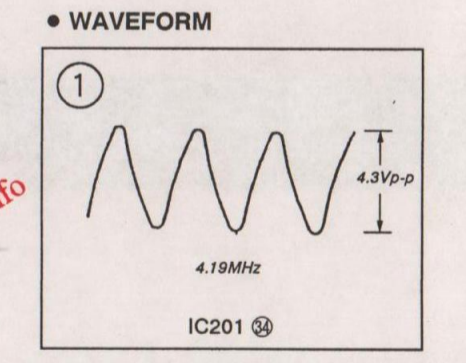
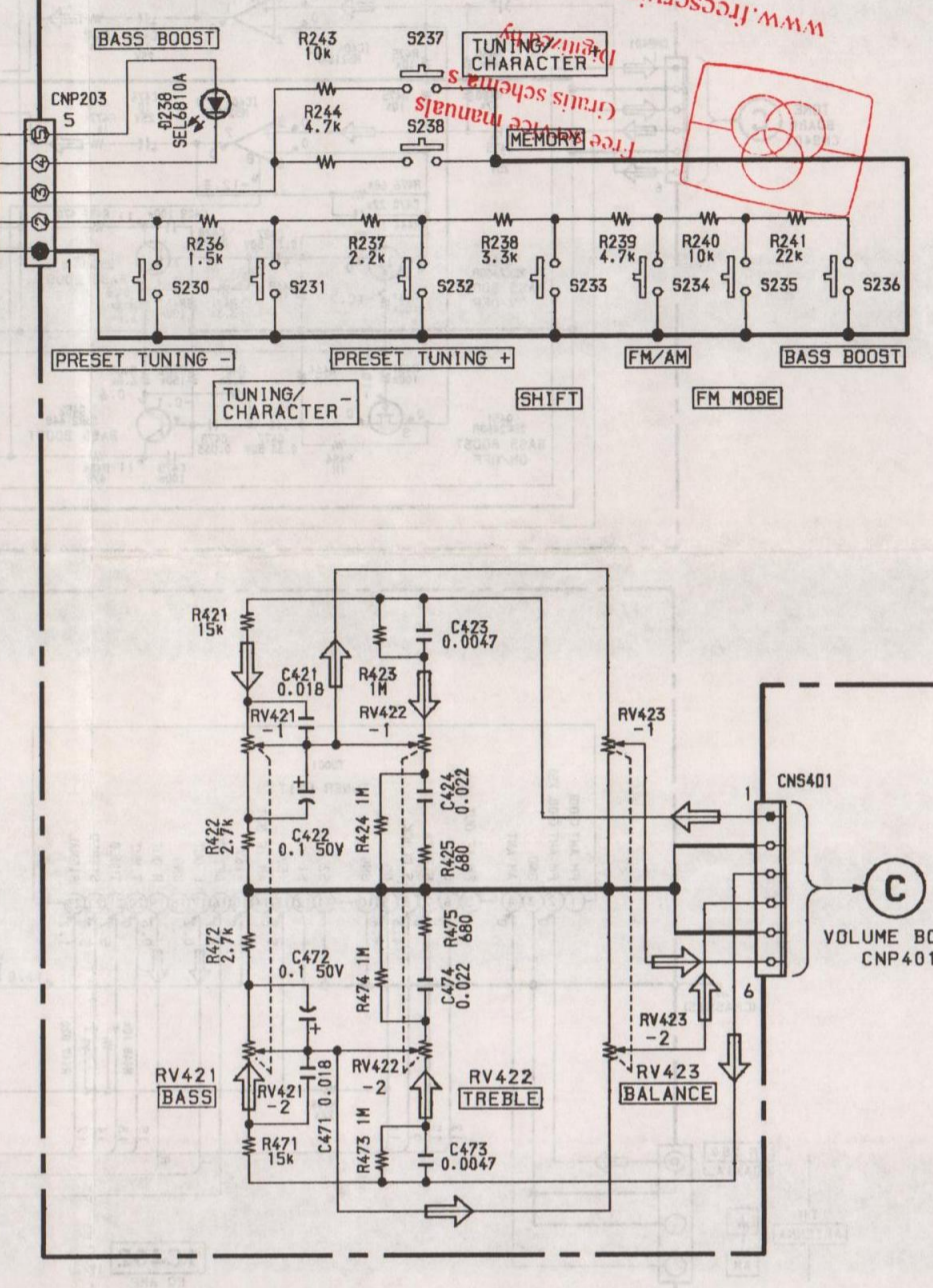


IC BLOCK DIAGRAM - DISPLAY SECTION -

IC202 BA6208



【TONE BOARD】



Note: All capacitors are in μF unless otherwise noted. pF: μF 50WV or less are not indicated except for electrolytics and tantalums.

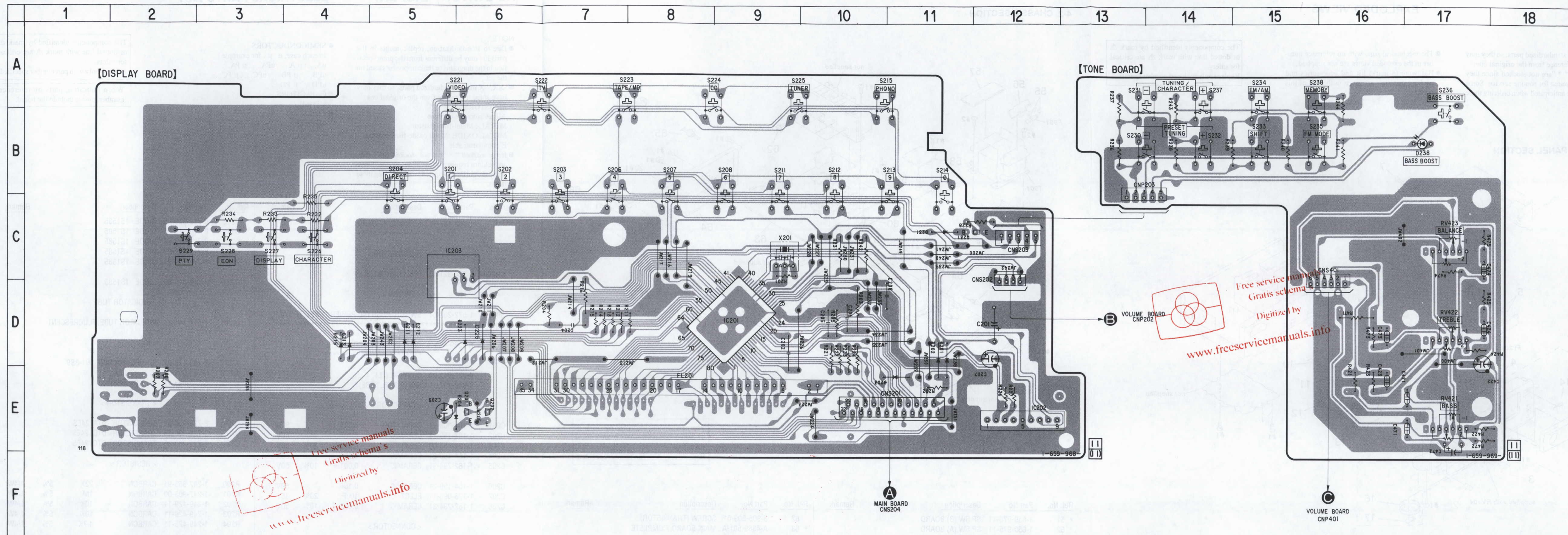
Free service manuals  
Gratis schema's  
Digitized by  
www.freeservicemanuals.info

Free service manuals  
Gratis schema's  
Digitized by  
www.freeservicemanuals.info

Free service manuals  
Gratis schema's  
Digitized by  
www.freeservicemanuals.info



3-5. PRINTED WIRING BOARDS (DISPLAY SECTION)



• SEMICONDUCTOR LOCATION

Ref. No.	Location	Ref. No.	Location
D201	D - 11	D231	C - 11
D202	D - 11	D238	D - 17
D203	E - 11		
D204	E - 6	IC201	D - 9
D211	D - 5	IC202	E - 12
		IC203	C - 5
D212	D - 5		
D213	D - 4	Q201	E - 6
D215	D - 4	Q202	E - 6
D223	D - 6	Q231	C - 12
D225	D - 6		

- Note:**
- — : parts extracted from the component side.
  - : parts extracted from the conductor side.
  - △ : internal component.
  - ▨ : Pattern from the side which enables seeing. (The other layers' patterns are not indicated)



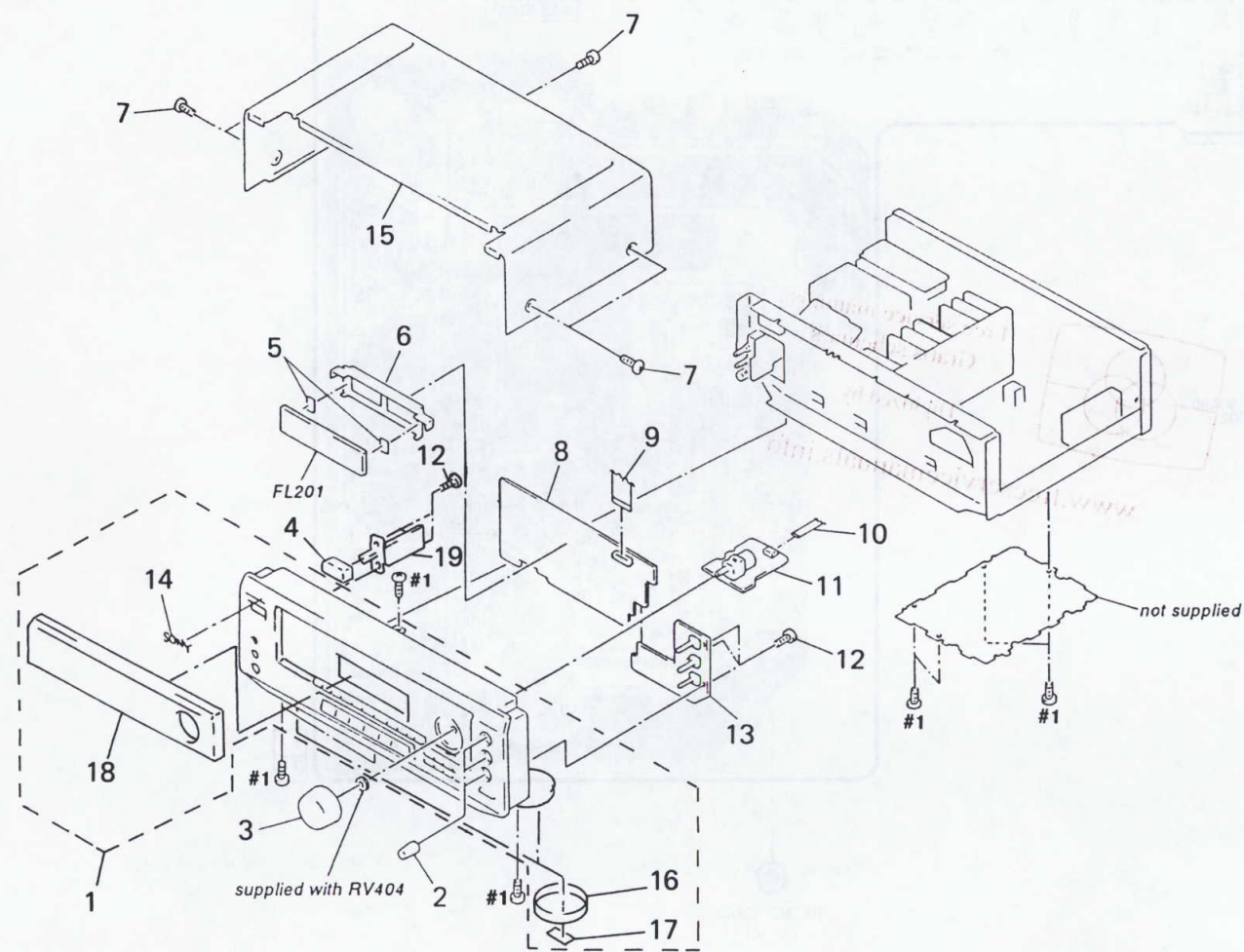
### SECTION 4 EXPLODED VIEWS

**NOTE :**

- -XX, -X mean standardized parts, so they may have some difference from the original one.
- Items marked " \* " are not stocked since they are seldom required for routine service. Some delay should be anticipated when ordering these items.
- The mechanical parts with no reference number in the exploded views are not supplied.
- Hardware (# mark) list and accessories and packing materials are given in the last of this parts list.

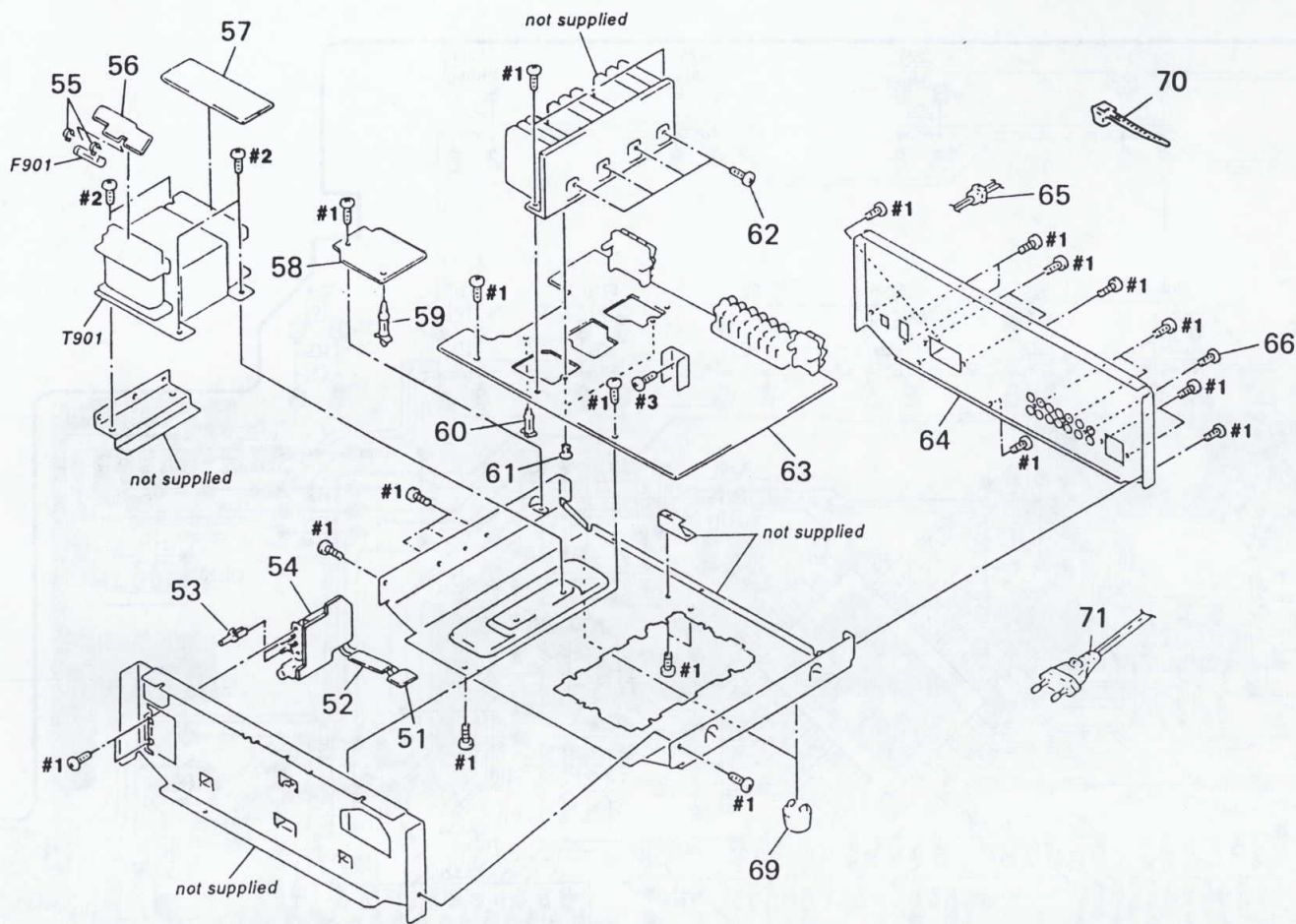
The components identified by mark  $\Delta$  or dotted line with mark  $\Delta$  are critical for safety.  
Replace only with part number specified.

#### 4-1. FRONT PANEL SECTION



Ref. No.	Part No.	Description	Remark	Ref. No.	Part No.	Description	Remark
1	X-4946-862-1	PANEL ASSY, FRONT		* 11	A-4389-504-A	VOLUME BOARD, COMPLETE	
2	4-980-639-01	KNOB (R14)		12	4-951-620-01	SCREW (2.6X8), +BVTP	
3	X-4946-873-1	KNOB (R48) ASSY		* 13	A-4389-526-A	TONE BOARD, COMPLETE	
4	4-980-109-01	BUTTON (P-M)		14	4-963-404-21	EMBLEM (5-A), SONY	
* 5	4-921-941-01	CUSHION (FL)		15	4-980-658-11	CASE (413226)	
* 6	4-943-107-11	HOLDER (FL TUBE)		16	4-977-593-11	RING (DIA. 50), ORNAMENTAL	
7	3-704-366-01	SCREW (CASE) (M3X8)		17	4-977-358-11	CUSHION (8X12.5)	
* 8	A-4389-499-A	DISPLAY BOARD, COMPLETE		18	4-980-674-31	PLATE (A2), INDICATION	
9	1-765-343-11	WIRE (FLAT TYPE) (23 CORE)		* 19	1-660-183-11	AC SWITCH BOARD	
10	1-769-941-11	WIRE (FLAT TYPE) (11 CORE)		FL201	1-517-141-11	INDICATOR TUBE, FLUORESCENT	

#### 4-2. CHASSIS SECTION



The components identified by mark  $\Delta$  or dotted line with mark  $\Delta$  are critical for safety.  
Replace only with part number specified.

Ref. No.	Part No.	Description	Remark	Ref. No.	Part No.	Description	Remark
* 51	1-659-976-11	SP SW (B) BOARD		62	3-905-609-01	SCREW (TRANSISTOR)	
* 52	1-659-975-11	SP SW (A) BOARD		* 63	A-4389-501-A	MAIN BOARD, COMPLETE	
53	4-951-801-01	BUTTON (S)		* 64	4-980-649-01	PANEL, BACK	
* 54	1-659-974-11	SP SW BOARD		65	3-703-244-00	BUSHING, CORD	
55	1-533-233-11	HOLDER, FUSE		66	4-909-982-11	SCREW, TAPPING	
* 56	1-659-972-11	PRIMARY BOARD		69	X-4947-207-1	FOOT ASSY (F50150S)	
* 57	1-659-973-11	SECONDARY BOARD		70	3-701-748-00	CLAMP	
* 58	1-659-970-11	STANDBY BOARD		$\Delta$ 71	1-769-744-11	CORD, POWER	
59	4-924-098-01	HOLDER, PC BOARD		$\Delta$ F901	1-532-502-51	FUSE, TIME LAG (T1.25AL/ 250V)	
* 60	4-924-098-21	HOLDER, PC BOARD		$\Delta$ T901	1-429-515-11	TRANSFORMER, POWER	
61	4-812-134-00	RIVET (DIA. 3.5), NYLON					

### AC SWITCH DISPLAY

**NOTE :**

- Due to standardization, replacements in the parts list may be different from the parts specified in the diagrams or the components used on the set.
- -XX, -X mean standardized parts, so they may have some difference from the original one.
- RESISTORS  
All resistors are in ohms  
METAL : Metal-film resistor  
METAL OXIDE :Metal oxide-film resistor  
F : nonflammable
- Items marked " \* " are not stocked since they are seldom required for routine service. Some delay should be anticipated when ordering these items.

### SECTION 5 ELECTRICAL PARTS LIST

• SEMICONDUCTORS

In each case, u :  $\mu$ , for example :  
uA..... :  $\mu$  A....., uPA..... :  $\mu$  PA.....  
uPB..... :  $\mu$  PB....., uPC..... :  $\mu$  PC.....  
uPD..... :  $\mu$  PD.....

• CAPACITORS

uF :  $\mu$  F

• COILS

uH :  $\mu$  H

The components identified by mark  $\Delta$  or dotted line with mark  $\Delta$  are critical for safety.  
Replace only with part number specified.

When indicating parts by reference number, please include the board.

Ref. No.	Part No.	Description	Remark	Ref. No.	Part No.	Description	Remark
* 1-660-183-11	AC SWITCH BOARD	*****		D212	8-719-815-85	DIODE 1S1585	
	< CONNECTOR >			D213	8-719-815-85	DIODE 1S1585	
CNP904	1-564-321-00	PIN, CONNECTOR 2P		D215	8-719-815-85	DIODE 1S1585	
	< SWITCH >			D223	8-719-815-85	DIODE 1S1585	
$\Delta$ S900	1-572-267-51	SWITCH, PUSH (AC POWER)(1 KEY) (POWER)	*****	D225	8-719-815-85	DIODE 1S1585	
	A-4389-499-A	DISPLAY BOARD, COMPLETE	*****	D231	8-719-815-85	DIODE 1S1585	
	4-921-941-01	CUSHION (FL)			< INDICATOR TUBE >		
	4-943-107-11	HOLDER (FL TUBE)		FL201	1-517-141-11	INDICATOR TUBE, FLUORESCENT	
	< CAPACITOR >				< IC >		
C201	1-104-905-11	CAPACITOR	0.22F 5.5V	IC201	8-759-426-91	IC uPD78044AGF-191-3B9	
C202	1-164-159-21	CERAMIC	0.1uF 50V	IC202	8-759-962-08	IC BA6208	
C203	1-124-465-00	ELECT	0.47uF 20% 50V	IC203	8-749-923-11	IC GP1U58XB	
C204	1-164-159-21	CERAMIC	0.1uF 50V		< TRANSISTOR >		
C205	1-162-294-31	CERAMIC	0.001uF 10% 50V	Q201	8-729-900-63	TRANSISTOR DTA124ES	
C206	1-164-159-21	CERAMIC	0.1uF 50V	Q202	8-729-900-36	TRANSISTOR DTC124ES	
C207	1-126-096-11	ELECT	10uF 20% 35V	Q231	8-729-900-36	TRANSISTOR DTC124ES	
C208	1-162-294-31	CERAMIC	0.001uF 10% 50V		< RESISTOR >		
	< CONNECTOR >			R200	1-247-863-91	CARBON 22K 5% 1/4W	
CNS201	1-568-741-11	SOCKET, CONNECTOR 23P		R201	1-247-903-00	CARBON 1M 5% 1/4W	
CNS202	1-770-397-11	HOUSING, CONNECTOR(PC BOARD)4P		R202	1-249-429-11	CARBON 10K 5% 1/4W	
* CNS203	1-565-481-11	CONNECTOR, BOARD TO BOARD 5P		R203	1-249-429-11	CARBON 10K 5% 1/4W	
	< DIODE >			R204	1-249-425-11	CARBON 4.7K 5% 1/4W	
D201	8-719-815-85	DIODE 1S1585		R205	1-249-441-11	CARBON 100K 5% 1/4W	
D202	8-719-815-85	DIODE 1S1585		R207	1-249-429-11	CARBON 10K 5% 1/4W	
D203	8-719-815-85	DIODE 1S1585		R211	1-247-863-91	CARBON 22K 5% 1/4W	
D204	8-719-815-85	DIODE 1S1585		R212	1-247-863-91	CARBON 22K 5% 1/4W	
D211	8-719-815-85	DIODE 1S1585		R213	1-247-863-91	CARBON 22K 5% 1/4W	
				R214	1-247-863-91	CARBON 22K 5% 1/4W	
				R215	1-247-863-91	CARBON 22K 5% 1/4W	
				R216	1-247-863-91	CARBON 22K 5% 1/4W	
				R221	1-247-807-31	CARBON 100 5% 1/4W	
				R222	1-247-807-31	CARBON 100 5% 1/4W	



<b>DISPLAY</b>	<b>MAIN</b>
----------------	-------------

Ref. No.	Part No.	Description			Remark	Ref. No.	Part No.	Description			Remark
R223	1-247-807-31	CARBON	100	5%	1/4W	C6	1-162-291-31	CERAMIC7	560PF	10%	50V
R224	1-247-807-31	CARBON	100	5%	1/4W	C7	1-102-527-11	CERAMIC	82PF	5%	50V
R226	1-249-441-11	CARBON	100K	5%	1/4W	C8	1-102-852-91	CERAMIC	47PF	5%	50V
R227	1-249-441-11	CARBON	100K	5%	1/4W	C353	1-164-159-21	CERAMIC	0.1uF		50V
R228	1-249-411-11	CARBON	330	5%	1/4W	C354	1-164-159-21	CERAMIC	0.1uF		50V
R231	1-249-427-11	CARBON	6.8K	5%	1/4W	C363	1-164-159-21	CERAMIC	0.1uF		50V
R232	1-249-411-11	CARBON	330	5%	1/4W	C401	1-162-286-21	CERAMIC	220PF	10%	50V
R233	1-249-413-11	CARBON	470	5%	1/4W	C402	1-126-962-11	ELECT	3.3uF	20%	50V
R234	1-249-415-11	CARBON	680	5%	1/4W	C403	1-126-966-11	ELECT	33uF	20%	16V
R235	1-249-417-11	CARBON	1K	5%	1/4W	C404	1-162-286-21	CERAMIC	220PF	10%	50V
R242	1-249-427-11	CARBON	6.8K	5%	1/4W	C405	1-137-459-11	FILM	0.0056uF	5%	100V
		< SWITCH >				C406	1-164-159-21	CERAMIC	0.1uF		50V
S201	1-554-303-21	SWITCH, TACTILE (1)				C407	1-137-365-11	FILM	0.0015uF	5%	50V
S202	1-554-303-21	SWITCH, TACTILE (2)				C408	1-162-294-31	CERAMIC	0.001uF	10%	50V
S203	1-554-303-21	SWITCH, TACTILE (3)				C409	1-126-962-11	ELECT	3.3uF	20%	50V
S204	1-554-303-21	SWITCH, TACTILE (DIRECT)				C410	1-164-159-21	CERAMIC	0.1uF		50V
S206	1-554-303-21	SWITCH, TACTILE (4)				C412	1-162-291-31	CERAMIC	560PF	10%	50V
S207	1-554-303-21	SWITCH, TACTILE (5)				C413	1-164-159-21	CERAMIC	0.1uF		50V
S208	1-554-303-21	SWITCH, TACTILE (6)				C415	1-164-159-21	CERAMIC	0.1uF		50V
S211	1-554-303-21	SWITCH, TACTILE (7)				C416	1-164-159-21	CERAMIC	0.1uF		50V
S212	1-554-303-21	SWITCH, TACTILE (8)				C421	1-126-964-11	ELECT	10uF	20%	50V
S213	1-554-303-21	SWITCH, TACTILE (9)				C422	1-124-903-11	ELECT	1uF	20%	50V
S214	1-554-303-21	SWITCH, TACTILE (0)				C434	1-162-286-21	CERAMIC	220PF	10%	50V
S215	1-554-303-21	SWITCH, TACTILE (PHONO)				C435	1-162-286-21	CERAMIC	220PF	10%	50V
S221	1-554-303-21	SWITCH, TACTILE (VIDEO)				C451	1-162-286-21	CERAMIC	220PF	10%	50V
S222	1-554-303-21	SWITCH, TACTILE (TV)				C452	1-126-962-11	ELECT	3.3uF	20%	50V
S223	1-554-303-21	SWITCH, TACTILE (TAPE/MD)				C453	1-126-966-11	ELECT	33uF	20%	16V
S224	1-554-303-21	SWITCH, TACTILE (CD)				C454	1-162-286-21	CERAMIC	220PF	10%	50V
S225	1-554-303-21	SWITCH, TACTILE (TUNER)				C455	1-137-459-11	FILM	0.0056uF	5%	100V
S226	1-554-303-21	SWITCH, TACTILE (CHARACTER)				C457	1-137-365-11	FILM	0.0015uF	5%	50V
S227	1-554-303-21	SWITCH, TACTILE (DISP)				C459	1-126-962-11	ELECT	3.3uF	20%	50V
S228	1-554-303-21	SWITCH, TACTILE (EON)				C460	1-164-159-21	CERAMIC	0.1uF		50V
S229	1-554-303-21	SWITCH, TACTILE (PTY)				C471	1-126-964-11	ELECT	10uF	20%	50V
		< VIBRATOR >				C472	1-124-903-11	ELECT	1uF	20%	50V
X201	1-577-101-11	VIBRATOR, CERAMIC (4.19MHz)				C701	1-126-963-11	ELECT	4.7uF	20%	50V
*****											
*	A-4389-501-A	MAIN BOARD, COMPLETE				C702	1-102-973-00	CERAMIC	100PF	5%	50V
		*****				C703	1-126-933-11	ELECT	100uF	20%	10V
	3-905-609-01	SCREW (TRANSISTOR)				C705	1-102-233-00	CERAMIC	33PF	10%	500V
	4-812-134-00	RIVET (DIA. 3.5), NYLON				C710	1-126-967-11	ELECT	47uF	20%	16V
	7-682-548-04	SCREW +BVTT 3X8 (S)				C711	1-137-372-11	FILM	0.022uF	5%	50V
*	1-537-738-21	TERMINAL, EARTH				C720	1-162-286-21	CERAMIC	220PF	10%	50V
		< CAPACITOR >				C721	1-126-923-11	ELECT	220uF	20%	10V
C1	1-126-964-11	ELECT	10uF	20%	50V	C722	1-126-965-11	ELECT	22uF	20%	50V
C2	1-162-306-11	CERAMIC	0.01uF	30%	16V	C740	1-128-563-11	ELECT	100uF	20%	100V
C3	1-162-288-31	CERAMIC	330PF	10%	50V	C741	1-128-563-11	ELECT	100uF	20%	100V
C4	1-124-925-11	ELECT	2.2uF	20%	100V	C742	1-126-923-11	ELECT	220uF	20%	10V
C5	1-162-306-11	CERAMIC	0.01uF	30%	16V	C751	1-126-963-11	ELECT	4.7uF	20%	50V
						C752	1-102-973-00	CERAMIC	100PF	5%	50V
						C753	1-126-933-11	ELECT	100uF	20%	10V
						C755	1-102-233-00	CERAMIC	33PF	10%	500V
						C760	1-126-967-11	ELECT	47uF	20%	16V
						C761	1-137-372-11	FILM	0.022uF	5%	50V



<b>MAIN</b>
-------------

Ref. No.	Part No.	Description	Remark	Ref. No.	Part No.	Description	Remark
C770	1-162-286-21	CERAMIC	220PF 10% 50V	D721	8-719-815-85	DIODE 1S1585	
C799	1-164-159-21	CERAMIC	0.1uF 50V	D722	8-719-815-85	DIODE 1S1585	
C801	1-104-664-11	ELECT	47uF 20% 25V	D723	8-719-815-85	DIODE 1S1585	
C802	1-104-664-11	ELECT	47uF 20% 25V	D724	8-719-815-85	DIODE 1S1585	
C803	1-128-506-11	ELECT	6800uF 20% 50V	D801	8-719-002-33	DIODE UZL-24L	
C804	1-128-506-11	ELECT	6800uF 20% 50V	D802	8-719-302-38	DIODE RBV-602-01	
C805	1-130-781-00	FILM	0.22uF 10% 100V	D804	8-719-010-38	DIODE UZ-5.1BSB	
C806	1-130-781-00	FILM	0.22uF 10% 100V	D805	8-719-002-33	DIODE UZL-24L	
C807	1-104-664-11	ELECT	47uF 20% 25V	D820	8-719-200-82	DIODE 11ES2	
C808	1-104-664-11	ELECT	47uF 20% 25V	D821	8-719-200-82	DIODE 11ES2	
C809	1-124-903-11	ELECT	1uF 20% 50V	D822	8-719-200-82	DIODE 11ES2	
C810	1-124-903-11	ELECT	1uF 20% 50V	D823	8-719-200-82	DIODE 11ES2	
C811	1-126-951-11	ELECT	470uF 20% 35V	D824	8-719-815-85	DIODE 1S1585	
C812	1-126-951-11	ELECT	470uF 20% 35V	D825	8-719-815-85	DIODE 1S1585	
C813	1-164-088-11	CERAMIC	0.001uF 50V			< IC >	
C814	1-164-088-11	CERAMIC	0.001uF 50V	IC1	8-759-169-99	IC SAA6579	
C815	1-126-947-11	ELECT	47uF 20% 35V	IC2	8-759-636-74	IC M5218AP-22	
C816	1-126-947-11	ELECT	47uF 20% 35V	IC401	8-759-805-14	IC LC7822	
C898	1-124-903-11	ELECT	1uF 20% 50V	IC402	8-759-636-74	IC M5218AP-22	
C950	1-126-952-11	ELECT	1000uF 20% 16V	IC403	8-759-636-74	IC M5218AP-22	
C951	1-164-097-11	CERAMIC	0.022uF 50V	IC701	8-759-326-52	IC uPC2581V	
C952	1-124-903-11	ELECT	1uF 20% 50V	IC801	8-759-391-87	IC BA78M12P	
C953	1-124-464-11	ELECT	0.22uF 20% 50V	IC802	8-759-700-69	IC NJM79L12A	
C954	1-126-964-11	ELECT	10uF 20% 50V	IC950	8-759-333-83	IC NJM2103D	
C956	1-164-159-21	CERAMIC	0.1uF 50V			< JACK >	
CC01	1-162-282-31	CERAMIC	100PF 10% 50V	J401	1-695-188-31	JACK, PIN 4P (PHONO,CD)	
CC02	1-162-282-31	CERAMIC	100PF 10% 50V	J402	1-770-015-11	JACK, PIN 6P (TAPE/MD)	
CC03	1-162-282-31	CERAMIC	100PF 10% 50V	J403	1-695-188-31	JACK, PIN 4P (TV,VIDEO)	
CC04	1-162-282-31	CERAMIC	100PF 10% 50V			< COIL >	
CC05	1-162-282-31	CERAMIC	100PF 10% 50V	L1	1-410-521-11	INDUCTOR 100uH	
CC06	1-162-282-31	CERAMIC	100PF 10% 50V	L401	1-410-509-11	INDUCTOR 10uH	
CC07	1-162-282-31	CERAMIC	100PF 10% 50V	L402	1-410-509-11	INDUCTOR 10uH	
CC12	1-164-096-11	CERAMIC	0.01uF 50V	L701	1-420-872-00	COIL, AIR-CORE	
CC13	1-164-096-11	CERAMIC	0.01uF 50V	L751	1-420-872-00	COIL, AIR-CORE	
CC51	1-162-282-31	CERAMIC	100PF 10% 50V			< TRANSISTOR >	
CC52	1-162-282-31	CERAMIC	100PF 10% 50V	Q303	8-729-922-37	TRANSISTOR 2SD2144S-UVW	
CC53	1-162-282-31	CERAMIC	100PF 10% 50V	Q304	8-729-922-37	TRANSISTOR 2SD2144S-UVW	
CC54	1-162-282-31	CERAMIC	100PF 10% 50V	Q701	8-729-119-76	TRANSISTOR 2SA1175-HFE	
CC55	1-162-282-31	CERAMIC	100PF 10% 50V	Q702	8-729-141-30	TRANSISTOR 2SC3623A-LK	
CC56	1-162-282-31	CERAMIC	100PF 10% 50V	Q703	8-729-020-72	TRANSISTOR 2SD2438-OPY	
CC57	1-162-282-31	CERAMIC	100PF 10% 50V	Q704	8-729-020-41	TRANSISTOR 2SB1587-OPY	
CC62	1-164-096-11	CERAMIC	0.01uF 50V	Q710	8-729-119-78	TRANSISTOR 2SC2785-HFE	
CC63	1-164-096-11	CERAMIC	0.01uF 50V	Q711	8-729-140-84	TRANSISTOR 2SC1841-PAFAEA	
		< CONNECTOR >		Q720	8-729-140-82	TRANSISTOR 2SA988-PAFAEA	
CNP404	1-569-060-11	SOCKET, CONNECTOR 11P		Q721	8-729-140-82	TRANSISTOR 2SA988-PAFAEA	
CNP702	1-770-481-11	PIN, CONNECTOR 4P		Q722	8-729-140-84	TRANSISTOR 2SC1841-PAFAEA	
CNP706	1-764-477-11	PIN, CONNECTOR (PC BOARD) 8P		Q723	8-729-119-78	TRANSISTOR 2SC2785-HFE	
CNS204	1-568-742-11	SOCKET, CONNECTOR 23P		Q751	8-729-119-76	TRANSISTOR 2SA1175-HFE	
		< DIODE >		Q752	8-729-141-30	TRANSISTOR 2SC3623A-LK	
D710	8-719-815-85	DIODE 1S1585					



**MAIN**

Ref. No.	Part No.	Description	Remark
Q753	8-729-020-72	TRANSISTOR 2SD2438-OPY	
Q754	8-729-020-41	TRANSISTOR 2SB1587-OPY	
Q770	8-729-140-82	TRANSISTOR 2SA988-PAFAEA	
Q801	8-729-140-97	TRANSISTOR 2SB734-34	
Q803	8-729-030-18	TRANSISTOR 2SD2525	
Q951	8-729-030-18	TRANSISTOR 2SD2525	
< RESISTOR >			
R1	1-247-863-91	CARBON 22K	5% 1/4W
R2	1-249-426-11	CARBON 5.6K	5% 1/4W
R3	1-249-441-11	CARBON 100K	5% 1/4W
R4	1-249-441-11	CARBON 100K	5% 1/4W
R5	1-249-421-11	CARBON 2.2K	5% 1/4W
R6	1-247-807-31	CARBON 100	5% 1/4W
R7	1-247-807-31	CARBON 100	5% 1/4W
R304	1-249-441-11	CARBON 100K	5% 1/4W
R352	1-249-441-11	CARBON 100K	5% 1/4W
R353	1-249-425-11	CARBON 4.7K	5% 1/4W
R354	1-249-425-11	CARBON 4.7K	5% 1/4W
R401	1-249-411-11	CARBON 330	5% 1/4W
R402	1-249-421-11	CARBON 2.2K	5% 1/4W
R403	1-249-417-11	CARBON 1K	5% 1/4W
R404	1-249-417-11	CARBON 1K	5% 1/4W
R405	1-249-417-11	CARBON 1K	5% 1/4W
R406	1-249-417-11	CARBON 1K	5% 1/4W
R407	1-249-417-11	CARBON 1K	5% 1/4W
R408	1-249-429-11	CARBON 10K	5% 1/4W
R409	1-249-437-11	CARBON 47K	5% 1/4W
R410	1-247-897-11	CARBON 560K	5% 1/4W
R411	1-249-416-11	CARBON 820	5% 1/4W
R412	1-247-897-11	CARBON 560K	5% 1/4W
R413	1-249-437-11	CARBON 47K	5% 1/4W
R414	1-249-425-11	CARBON 4.7K	5% 1/4W
R416	1-249-417-11	CARBON 1K	5% 1/4W
R417	1-247-897-11	CARBON 560K	5% 1/4W
R418	1-249-417-11	CARBON 1K	5% 1/4W
R419	1-249-417-11	CARBON 1K	5% 1/4W
R420	1-249-441-11	CARBON 100K	5% 1/4W
R421	1-249-417-11	CARBON 1K	5% 1/4W
R435	1-249-418-11	CARBON 1.2K	5% 1/4W
R442	1-249-418-11	CARBON 1.2K	5% 1/4W
R443	1-249-418-11	CARBON 1.2K	5% 1/4W
R447	1-249-416-11	CARBON 820	5% 1/4W
R448	1-249-429-11	CARBON 10K	5% 1/4W
R449	1-247-863-91	CARBON 22K	5% 1/4W
R451	1-249-411-11	CARBON 330	5% 1/4W
R452	1-249-421-11	CARBON 2.2K	5% 1/4W
R453	1-249-417-11	CARBON 1K	5% 1/4W
R454	1-249-417-11	CARBON 1K	5% 1/4W
R455	1-249-417-11	CARBON 1K	5% 1/4W
R456	1-249-417-11	CARBON 1K	5% 1/4W
R457	1-249-417-11	CARBON 1K	5% 1/4W

Ref. No.	Part No.	Description	Remark
R458	1-249-429-11	CARBON 10K	5% 1/4W
R459	1-249-437-11	CARBON 47K	5% 1/4W
R460	1-247-897-11	CARBON 560K	5% 1/4W
R461	1-249-416-11	CARBON 820	5% 1/4W
R462	1-247-897-11	CARBON 560K	5% 1/4W
R463	1-249-437-11	CARBON 47K	5% 1/4W
R466	1-249-417-11	CARBON 1K	5% 1/4W
R467	1-247-897-11	CARBON 560K	5% 1/4W
R470	1-249-441-11	CARBON 100K	5% 1/4W
R471	1-249-417-11	CARBON 1K	5% 1/4W
R701	1-249-417-11	CARBON 1K	5% 1/4W
R702	1-249-439-11	CARBON 68K	5% 1/4W
R703	1-249-416-11	CARBON 820	5% 1/4W
R704	1-249-439-11	CARBON 68K	5% 1/4W
R710	1-249-421-11	CARBON 2.2K	5% 1/4W
R711	1-249-437-11	CARBON 47K	5% 1/4W
R713	1-249-414-11	CARBON 560	5% 1/4W
R714	1-249-409-11	CARBON 220	5% 1/4W
R715	1-249-409-11	CARBON 220	5% 1/4W
△ R716	1-233-352-21	ENCAPSULATED COMPONENT	F
R717	1-249-393-11	CARBON 10	5% 1/4W
R718	1-249-389-11	CARBON 4.7	5% 1/4W
R720	1-249-419-11	CARBON 1.5K	5% 1/4W
R721	1-249-425-11	CARBON 4.7K	5% 1/4W
R723	1-249-437-11	CARBON 47K	5% 1/4W
R724	1-249-429-11	CARBON 10K	5% 1/4W
R725	1-249-429-11	CARBON 10K	5% 1/4W
R726	1-249-417-11	CARBON 1K	5% 1/4W
R727	1-249-427-11	CARBON 6.8K	5% 1/4W
R730	1-249-429-11	CARBON 10K	5% 1/4W
R740	1-249-393-11	CARBON 10	5% 1/4W
R741	1-249-393-11	CARBON 10	5% 1/4W
R743	1-249-417-11	CARBON 1K	5% 1/4W
R744	1-249-425-11	CARBON 4.7K	5% 1/4W
R745	1-249-435-11	CARBON 33K	5% 1/4W
R751	1-249-417-11	CARBON 1K	5% 1/4W
R752	1-249-439-11	CARBON 68K	5% 1/4W
R753	1-249-416-11	CARBON 820	5% 1/4W
R754	1-249-439-11	CARBON 68K	5% 1/4W
R760	1-249-421-11	CARBON 2.2K	5% 1/4W
R761	1-249-437-11	CARBON 47K	5% 1/4W
R763	1-249-414-11	CARBON 560	5% 1/4W
R764	1-249-409-11	CARBON 220	5% 1/4W
R765	1-249-409-11	CARBON 220	5% 1/4W
△ R766	1-233-352-21	ENCAPSULATED COMPONENT	F
R767	1-249-393-11	CARBON 10	5% 1/4W
R768	1-249-389-11	CARBON 4.7	5% 1/4W
R770	1-249-419-11	CARBON 1.5K	5% 1/4W
R771	1-249-425-11	CARBON 4.7K	5% 1/4W
R773	1-249-437-11	CARBON 47K	5% 1/4W
R801	1-249-425-11	CARBON 4.7K	5% 1/4W

The components identified by mark △ or dotted line with mark △ are critical for safety. Replace only with part number specified.	Les composants identifiés par une marque △ sont critiques pour la sécurité. Ne les remplacer que par une pièce portant le numéro spécifié.
---	---



**MAIN PRIMARY SECONDARY SP SW (A)**

**SP SW (B) SP SW STANDBY TONE**

Ref. No.	Part No.	Description	Remark
R802	1-249-389-11	CARBON 4.7 5%	1/4W
R806	1-249-389-11	CARBON 4.7 5%	1/4W
R807	1-249-421-11	CARBON 2.2K 5%	1/4W
R950	1-249-421-11	CARBON 2.2K 5%	1/4W
R951	1-249-429-11	CARBON 10K 5%	1/4W
R952	1-249-423-11	CARBON 3.3K 5%	1/4W
R953	1-247-863-91	CARBON 22K 5%	1/4W
R954	1-249-439-11	CARBON 68K 5%	1/4W
R955	1-249-429-11	CARBON 10K 5%	1/4W
R956	1-249-423-11	CARBON 3.3K 5%	1/4W
R957	1-249-417-11	CARBON 1K 5%	1/4W
R959	1-249-397-11	CARBON 22 5%	1/4W
R960	1-249-429-11	CARBON 10K 5%	1/4W
RR01	1-249-418-11	CARBON 1.2K 5%	1/4W
RR04	1-249-393-11	CARBON 10 5%	1/4W
RR05	1-249-393-11	CARBON 10 5%	1/4W
RR51	1-249-418-11	CARBON 1.2K 5%	1/4W
RR54	1-249-393-11	CARBON 10 5%	1/4W
RR55	1-249-393-11	CARBON 10 5%	1/4W
		< RELAY >	
RY701	1-515-920-11	RELAY (24V)	
		< TERMINAL >	
TM1	1-537-714-11	TERMINAL BOARD (ANTENNA)	
TM701	1-537-376-11	TERMINAL BOARD (SPEAKERS)	
		< TUNER >	
TU001	1-233-594-11	ENCAPSULATED COMPONENT	
		< VIBRATOR >	
X1	1-579-900-21	VIBRATOR, CRYSTAL (4.332MHz)	
*****			
*	1-659-972-11	PRIMARY BOARD	
		*****	
	1-533-233-11	HOLDER, FUSE	
		< FUSE >	
△ F901	1-532-502-51	FUSE, TIME LAG (T1.25AL/ 250V)	
*****			
*	1-659-973-11	SECONDARY BOARD	
		*****	
		< CONNECTOR >	
CNP801	1-764-478-11	PIN, CONNECTOR (PC BOARD) 9P	
		< RESISTOR >	
R810	1-249-381-11	CARBON 1 5%	1/4W
R811	1-249-381-11	CARBON 1 5%	1/4W
*****			

Ref. No.	Part No.	Description	Remark
*	1-659-975-11	SP SW (A) BOARD	
		*****	
*****			
*	1-659-976-11	SP SW (B) BOARD	
		*****	
		< CONNECTOR >	
CNS702	1-770-482-11	CONNECTOR, BOARD TO BOARD 4P	
*****			
*	1-659-974-11	SP SW BOARD	
		*****	
		< CONNECTOR >	
CNP703	1-764-474-11	PIN, CONNECTOR (PC BOARD) 5P	
CNP704	1-764-473-11	PIN, CONNECTOR (PC BOARD) 3P	
		< JACK >	
J741	1-750-733-11	JACK (LARGE TYPE) (PHONES)	
		< RESISTOR >	
R741	1-260-100-11	CARBON 1.2K 5%	1/2W
R742	1-260-100-11	CARBON 1.2K 5%	1/2W
R791	1-260-100-11	CARBON 1.2K 5%	1/2W
R792	1-260-100-11	CARBON 1.2K 5%	1/2W
		< SWITCH >	
S701	1-762-320-11	SWITCH, PUSH (2 KEY) (SPEAKERS A/B)	
*****			
*	1-659-970-11	STANDBY BOARD	
		*****	
		< CONNECTOR >	
CNP901	1-564-321-00	PIN, CONNECTOR 2P	
		< TRANSFORMER >	
△ T901	1-429-515-11	TRANSFORMER, POWER	
*****			
*	A-4389-526-A	TONE BOARD, COMPLETE	
		*****	
		< CAPACITOR >	
C421	1-137-440-11	FILM 0.018uF 5%	50V
C422	1-124-463-00	ELECT 0.1uF 20%	50V
C423	1-137-368-11	FILM 0.0047uF 5%	50V
C424	1-137-372-11	FILM 0.022uF 5%	50V
C471	1-137-440-11	FILM 0.018uF 5%	50V
C472	1-124-463-00	ELECT 0.1uF 20%	50V
C473	1-137-368-11	FILM 0.0047uF 5%	50V



**STONE VOLUME**

Ref. No.	Part No.	Description	Remark
C474	1-137-372-11	FILM 0.022uF 5%	50V
< CONNECTOR >			
* CNP203	1-569-799-11	PLUG, CONNECTOR 5P	
CNS401	1-770-399-11	HOUSING, CONNECTOR(PC BOARD)6P	
< DIODE >			
D238	8-719-313-72	LED SEL3810A-CD (BASS BOOST)	
< RESISTOR >			
R236	1-249-419-11	CARBON 1.5K 5%	1/4W
R237	1-249-421-11	CARBON 2.2K 5%	1/4W
R238	1-249-423-11	CARBON 3.3K 5%	1/4W
R239	1-249-425-11	CARBON 4.7K 5%	1/4W
R240	1-249-429-11	CARBON 10K 5%	1/4W
R241	1-247-863-91	CARBON 22K 5%	1/4W
R243	1-249-429-11	CARBON 10K 5%	1/4W
R244	1-249-425-11	CARBON 4.7K 5%	1/4W
R421	1-249-431-11	CARBON 15K 5%	1/4W
R422	1-249-422-11	CARBON 2.7K 5%	1/4W
R423	1-247-903-00	CARBON 1M 5%	1/4W
R424	1-247-903-00	CARBON 1M 5%	1/4W
R425	1-249-415-11	CARBON 680 5%	1/4W
R471	1-249-431-11	CARBON 15K 5%	1/4W
R472	1-249-422-11	CARBON 2.7K 5%	1/4W
R473	1-247-903-00	CARBON 1M 5%	1/4W
R474	1-247-903-00	CARBON 1M 5%	1/4W
R475	1-249-415-11	CARBON 680 5%	1/4W
< VARIABLE RESISTOR >			
RV421	1-223-362-11	RES, VAR, CARBON 100K/100K (BASS)	
RV422	1-223-363-11	RES, VAR, CARBON 125K/125K (TREBLE)	
RV423	1-238-965-21	RES, VAR, CARBON 100K/100K (BALANCE)	
< SWITCH >			
S230	1-554-303-21	SWITCH, TACTILE (PRESET TUNING -)	
S231	1-554-303-21	SWITCH, TACTILE (TUNING -)	
S232	1-554-303-21	SWITCH, TACTILE (PRESET TUNING +)	
S233	1-554-303-21	SWITCH, TACTILE (SHIFT)	
S234	1-554-303-21	SWITCH, TACTILE (FM/AM)	
S235	1-554-303-21	SWITCH, TACTILE (FM MODE)	
S236	1-554-303-21	SWITCH, TACTILE (BASS BOOST)	
S237	1-554-303-21	SWITCH, TACTILE (TUNING +)	
S238	1-554-303-21	SWITCH, TACTILE (MEMORY)	
*****			
* A-4389-504-A	VOLUME BOARD, COMPLETE		
*****			
< CAPACITOR >			
C420	1-162-207-31	CERAMIC 22PF 5%	50V
C425	1-126-096-11	ELECT 10uF 20%	35V

Ref. No.	Part No.	Description	Remark
C426	1-126-096-11	ELECT 10uF 20%	35V
C427	1-124-252-00	ELECT 0.33uF 20%	50V
C428	1-130-489-00	MYLAR 0.033uF 5%	50V
C429	1-102-973-00	CERAMIC 100PF 5%	50V
C430	1-126-301-11	ELECT 1uF 20%	50V
C431	1-126-301-11	ELECT 1uF 20%	50V
C432	1-126-096-11	ELECT 10uF 20%	35V
C433	1-126-096-11	ELECT 10uF 20%	35V
C470	1-162-207-31	CERAMIC 22PF 5%	50V
C475	1-126-096-11	ELECT 10uF 20%	35V
C476	1-126-096-11	ELECT 10uF 20%	35V
C477	1-124-252-00	ELECT 0.33uF 20%	50V
C478	1-130-489-00	MYLAR 0.033uF 5%	50V
C479	1-102-973-00	CERAMIC 100PF 5%	50V
C492	1-124-464-11	ELECT 0.22uF 20%	50V
< CONNECTOR >			
CNP202	1-770-388-11	PIN, CONNECTOR (PC BOARD) 4P	
CNP401	1-770-390-11	PIN, CONNECTOR (PC BOARD) 6P	
CNS403	1-569-060-11	SOCKET, CONNECTOR 11P	
< DIODE >			
D421	8-719-815-85	DIODE 1S1585	
< IC >			
IC404	8-759-636-74	IC M5218AP-22	
< TRANSISTOR >			
Q401	8-729-202-67	TRANSISTOR 2SK246-GR3	
Q402	8-729-922-37	TRANSISTOR 2SD2144S-UVW	
Q451	8-729-202-67	TRANSISTOR 2SK246-GR3	
Q452	8-729-922-37	TRANSISTOR 2SD2144S-UVW	
< RESISTOR >			
R425	1-249-429-11	CARBON 10K 5%	1/4W
R426	1-249-439-11	CARBON 68K 5%	1/4W
R427	1-249-417-11	CARBON 1K 5%	1/4W
R430	1-249-437-11	CARBON 47K 5%	1/4W
R431	1-249-423-11	CARBON 3.3K 5%	1/4W
R432	1-247-883-00	CARBON 150K 5%	1/4W
R433	1-249-427-11	CARBON 6.8K 5%	1/4W
R434	1-249-413-11	CARBON 470 5%	1/4W
R438	1-249-441-11	CARBON 100K 5%	1/4W
R441	1-249-441-11	CARBON 100K 5%	1/4W
R444	1-247-903-00	CARBON 1M 5%	1/4W
R464	1-247-903-00	CARBON 1M 5%	1/4W
R469	1-247-903-00	CARBON 1M 5%	1/4W
R475	1-249-429-11	CARBON 10K 5%	1/4W
R476	1-249-439-11	CARBON 68K 5%	1/4W
R477	1-249-417-11	CARBON 1K 5%	1/4W
R480	1-249-437-11	CARBON 47K 5%	1/4W





**VOLUME**

Ref. No.	Part No.	Description			Remark
R481	1-249-423-11	CARBON	3.3K	5%	1/4W
R482	1-247-883-00	CARBON	150K	5%	1/4W
R483	1-249-427-11	CARBON	6.8K	5%	1/4W
R484	1-249-413-11	CARBON	470	5%	1/4W
R491	1-249-441-11	CARBON	100K	5%	1/4W
R492	1-247-903-00	CARBON	1M	5%	1/4W
R494	1-247-903-00	CARBON	1M	5%	1/4W

< VARIABLE RESISTOR >

RV404 1-241-426-11 RES, VAR, CARBON 100KX2 (VOLUME)

\*\*\*\*\*

MISCELLANEOUS

\*\*\*\*\*

9	1-765-343-11	WIRE (FLAT TYPE) (23 CORE)
10	1-769-941-11	WIRE (FLAT TYPE) (11 CORE)
55	1-533-233-11	HOLDER, FUSE
△71	1-769-744-11	CORD, POWER
FL201	1-517-141-11	INDICATOR TUBE, FLUORESCENT
△F901	1-532-502-51	FUSE, TIME LAG (T1.25AL/ 250V)
△T901	1-429-515-11	TRANSFORMER, POWER

\*\*\*\*\*

ACCESSORIES & PACKING MATERIALS

\*\*\*\*\*

- 1-473-633-11 REMOTE COMMANDER (RM-U265)
- 1-501-374-11 ANTENNA, LOOP
- 1-501-594-11 ANTENNA (FM)
- 1-501-721-11 ANTENNA (LOOP)
- 3-810-995-11 MANUAL, INSTRUCTION  
(ENGLISH, FRENCH, GERMAN, DUCH)
- 3-810-995-41 MANUAL, INSTRUCTION  
(SPANISH, SWEDISH, FRENCH, ITALIAN, DANISH)
- 4-981-643-01 COVER, BATTERY (FOR RM-U265)

\*\*\*\*\*

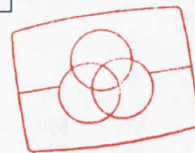
\*\*\*\*\*

**HARDWARE LIST**

\*\*\*\*\*

- #1 7-685-646-79 SCREW +BVTP 3X8 TYPE2 TT(B)
- #2 7-682-560-04 SCREW +BVTT 4X6 (S)
- #3 7-682-548-04 SCREW +BVTT 3X8 (S)

<p>The components identified by mark △ or dotted line with mark △ are critical for safety. Replace only with part number specified.</p>	<p>Les composants identifiés par une marque △ sont critiques pour la sécurité. Ne les remplacer que par une pièce portant le numéro spécifié.</p>
---	---



Free service manuals  
Gratis schema's

Digitized by

www.freeservicemanuals.info