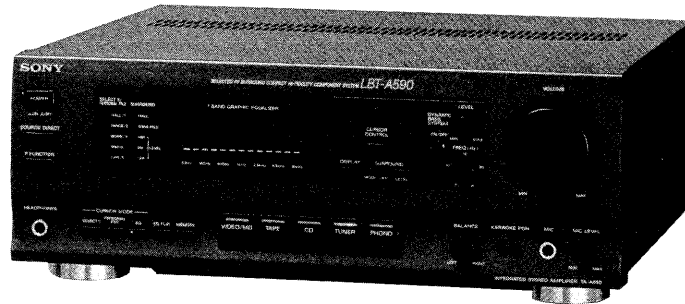


TA-A590

SERVICE MANUAL

*AEP Model
E Model
Australian Model
PX Model*



**TA-A590 is the amplifier
in LBT-A590/A595.**

This photo is E/Australian/PX model.

SPECIFICATIONS

DIN power output 60 W + 60 W (6 ohms, at 1 kHz)
Continuous RMS power output
 70 W + 70 W (6 ohms, at 1 kHz, 5% THD)
Music power output 110 W + 110 W (6 ohms)

Input	Jack type	Sensitivity	Impedance
PHONO (MM)	Phono	3 mV	47 kohms
VIDEO/MD	Phono	400 mV	47 kohms

Output	Jack type	Impedance
SURROUND SPEAKER	Phono	Accepts speakers of 16 ohms
HEADPHONES	Stereophone	Accepts headphones of 8 ohms or more

Frequency response 15 Hz to 50 kHz $+0$ -3 dB
Power requirements Model for Australian:
 240 V AC, 50/60 Hz
 Models for European countries:
 220 V – 230 V AC, 50/60 Hz
 Models for other countries: 120 V,
 220 V or 230 – 240 V AC adjustable,
 50/60 Hz
 Model for Mexican: 120 V AC, 60 Hz

Power consumption AEP model : 165 W
 E model : 190 W
 AU model : 190 W
 MX model : 167 W
Weight AEP model : Approx. 6.6 kg (14 lbs 9 oz)
 MX model : 6.1 kg
 Models for other countries: 6.7 kg
Dimensions Approx. 355 x 135 x 330 mm
 (14 x 5 $\frac{1}{4}$ x 12 $\frac{7}{8}$ inches)
 (w/h/d, including projections)

Design and specifications are subject to change without notice.

- Abbreviations
AU : Australian
MX : Mexican

INTEGRATED STEREO AMPLIFIER
SONY®

SECTION 1 GENERAL

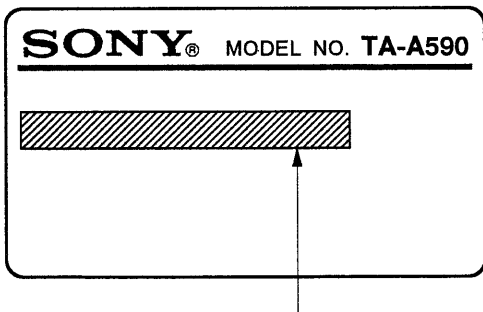
This section is extracted from instruction manual.

TABLE OF CONTENTS

Section	Title	Page
Specifications	1
1. GENERAL		
1-1.	Location of Controls	2
2. DISASSEMBLY	3
3. DIAGRAMS		
3-1.	Block Diagram	4
3-2.	Main Section Printed Wiring Boards	8
3-3.	Main Section Schematic Diagram	11
3-4.	Panel/Audio Section Schematic Diagram	15
3-5.	Panel/Audio Section Printed Wiring Boards	19
3-6.	IC Pin Description	22
4. EXPLODED VIEWS	25
5. ELECTRICAL PARTS LIST	27

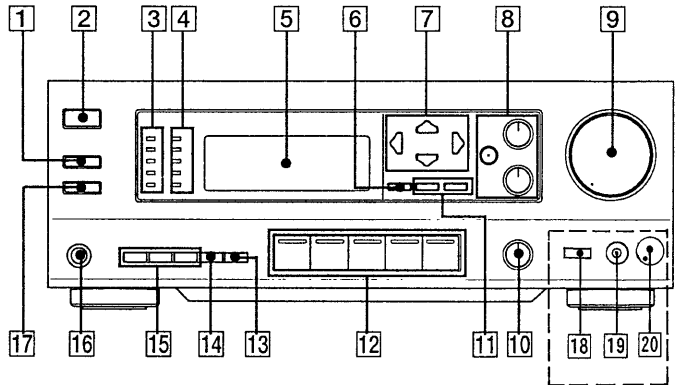
MODEL IDENTIFICATION

– Specification Label Printed on Back Panel –



AEP, German, Italian, East European,
 CIS model: AC 220 – 230 V ~50/60 Hz
 Australian model: AC 240 V ~50/60 Hz
 E, Saudi Arabia, Malaysia, Singapore,
 PX model: AC 120/220/230 – 240 V ~50/60 Hz
 Mexican model: AC 120 V ~60 Hz


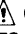
1-1. LOCATION OF CONTROLS



E, Australian, PX model

- 1 SOURCE DIRECT button and indicator (86)
- 2 POWER switch (18)
- 3 SELECT 5/PERSONAL FILE setting indicators (88, 98)
- 4 SURROUND MODE/OFF, SURROUND LEVEL setting indicators (86)
- 5 Display window
- 6 DISPLAY button (94)
- 7 CURSOR CONTROL buttons (88, 90, 94, 98)
- 8 DYNAMIC BASS SYSTEM button and controls (ON/OFF, FREQ, LEVEL) (20)
- 9 VOLUME control (20)
- 10 BALANCE control (20)
- 11 SURROUND buttons (MODE/OFF, LEVEL) (86)
- 12 Function selectors and indicators (38)
- 13 MEMORY button and indicator (96)
- 14 EQ FLAT button (94)
- 15 CURSOR MODE buttons (SELECT 5, PERSONAL FILE, EQ and indicators) (88, 90, 96, 98)
- 16 HEADPHONES jack (20)
- 17 P. FUNCTION button and indicator (122)
- 18 KARAOKE PON button (E, Australian, PX, model)
- 19 MIC jack (E, Australian, PX, model)
- 20 MIC LEVEL control (E, Australian, PX, model)

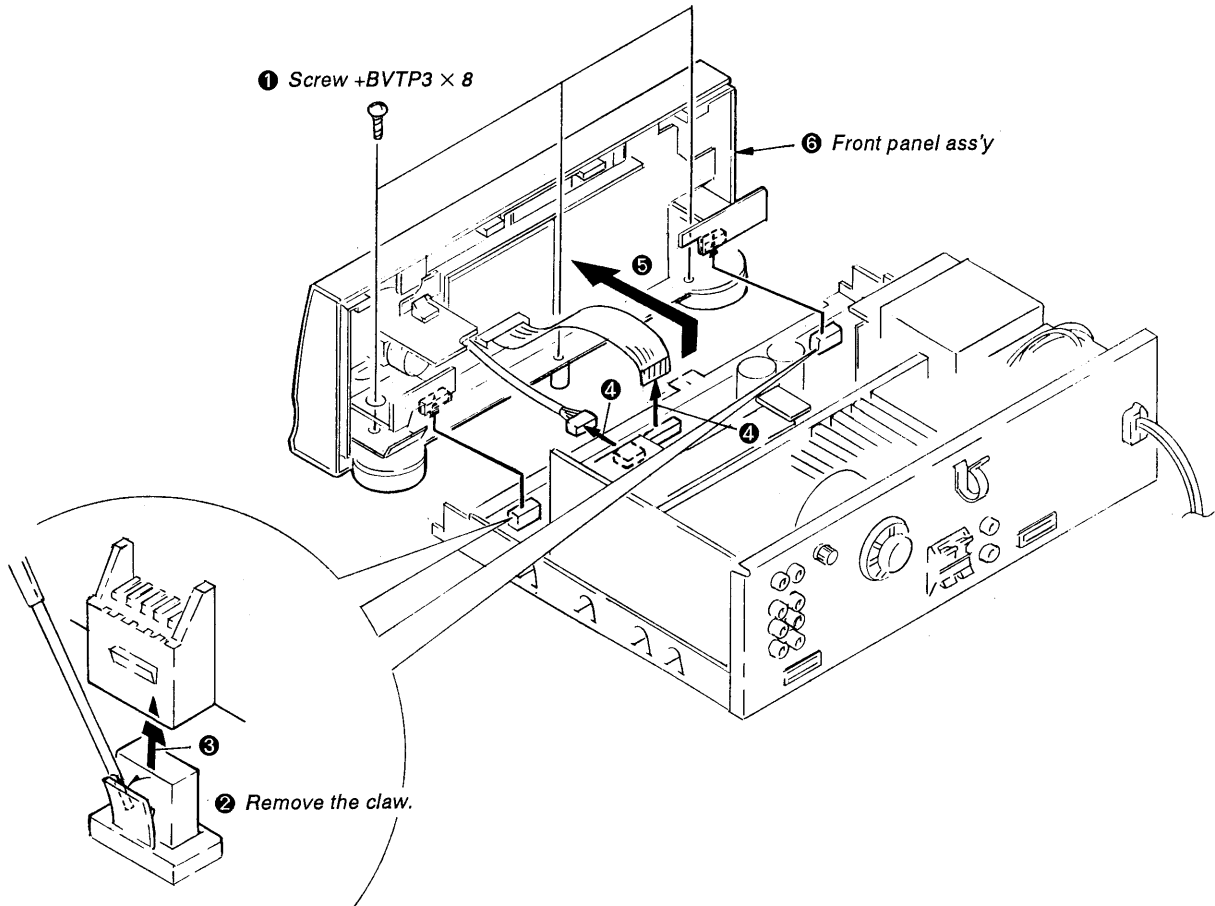
SAFETY-RELATED COMPONENT WARNING!!

COMPONENTS IDENTIFIED BY MARK  OR DOTTED LINE WITH MARK  ON THE SCHEMATIC DIAGRAMS AND IN THE PARTS LIST ARE CRITICAL TO SAFE OPERATION. REPLACE THESE COMPONENTS WITH SONY PARTS WHOSE PART NUMBERS APPEAR AS SHOWN IN THIS MANUAL OR IN SUPPLEMENTS PUBLISHED BY SONY.

SECTION 2 DISASSEMBLY

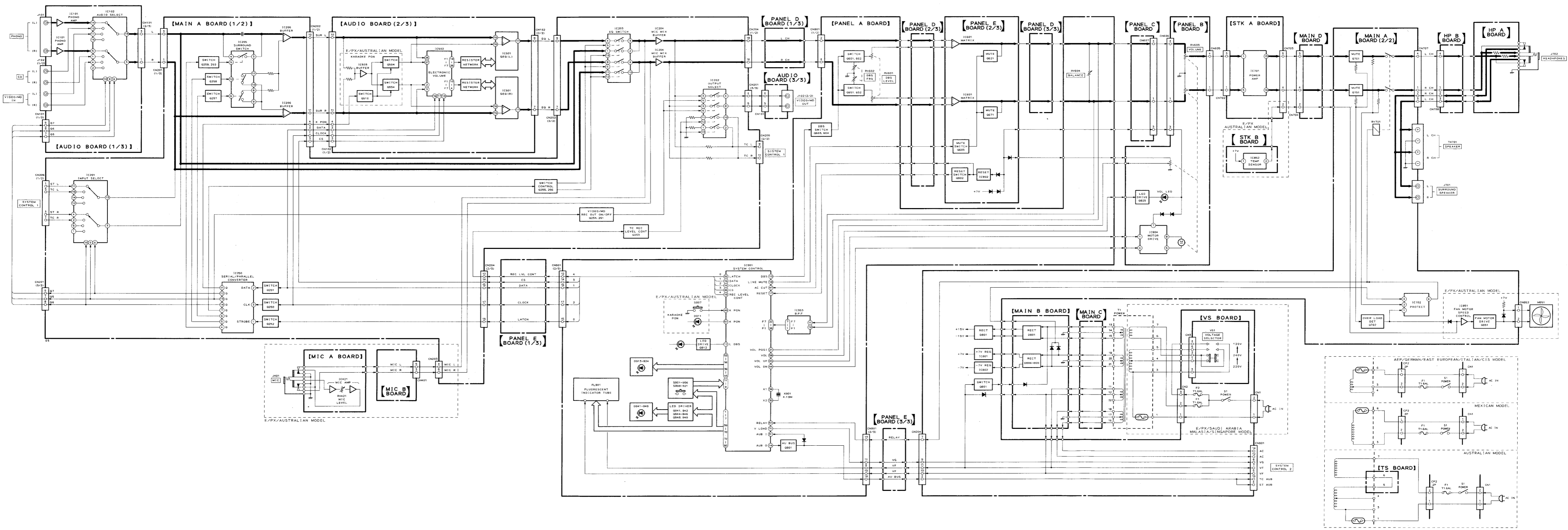
Note: Follow the disassembly procedure in the numerical order given.

Front panel ass'y



SECTION 3
DIAGRAMS

3-1. BLOCK DIAGRAM



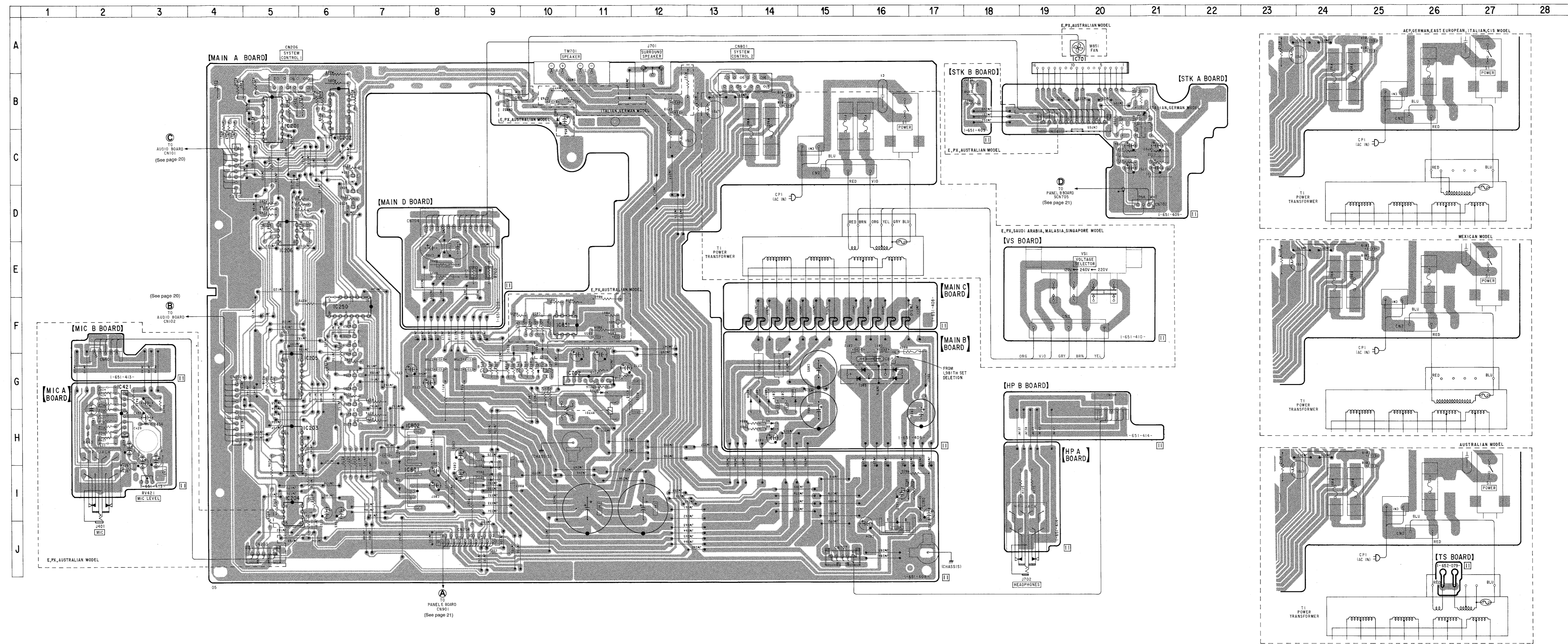
3-2. MAIN SECTION PRINTED WIRING BOARDS

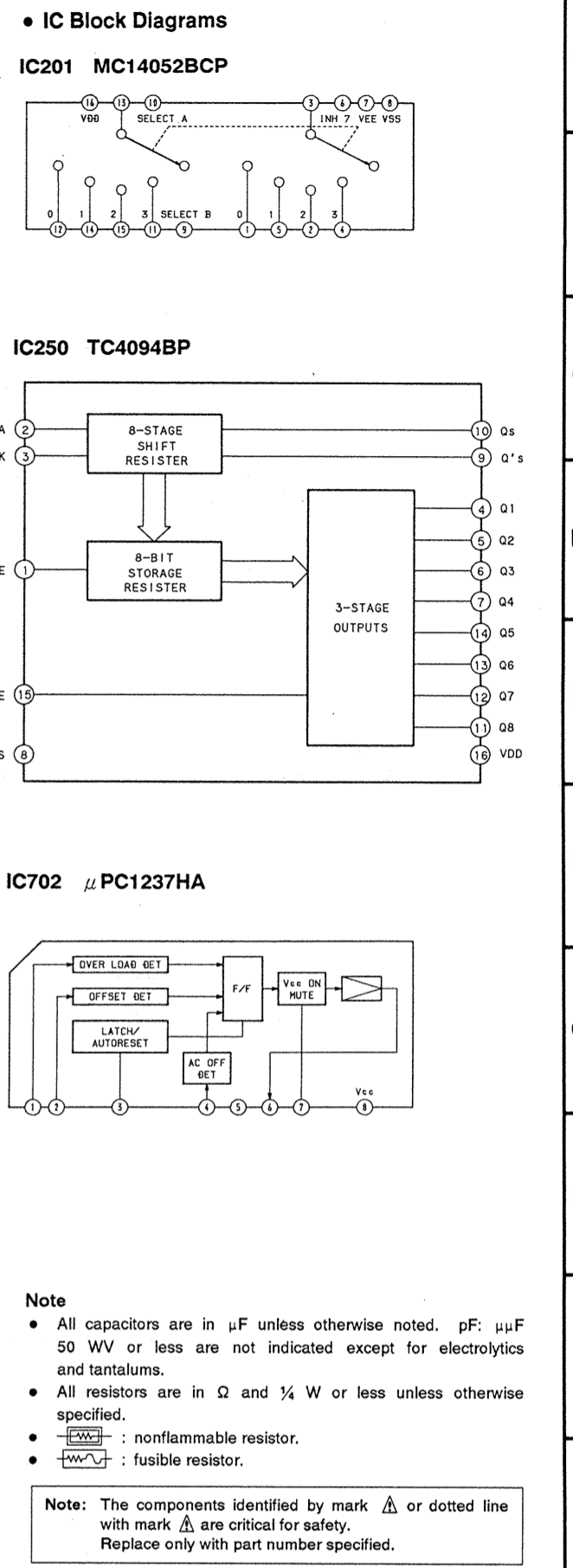
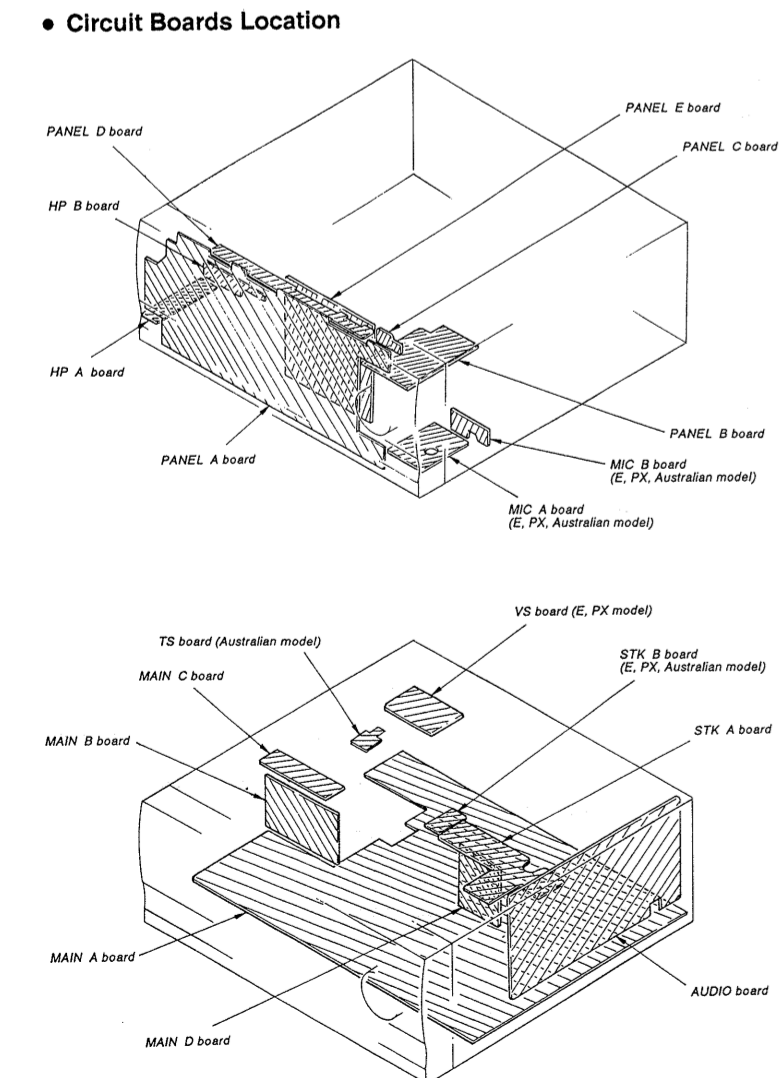
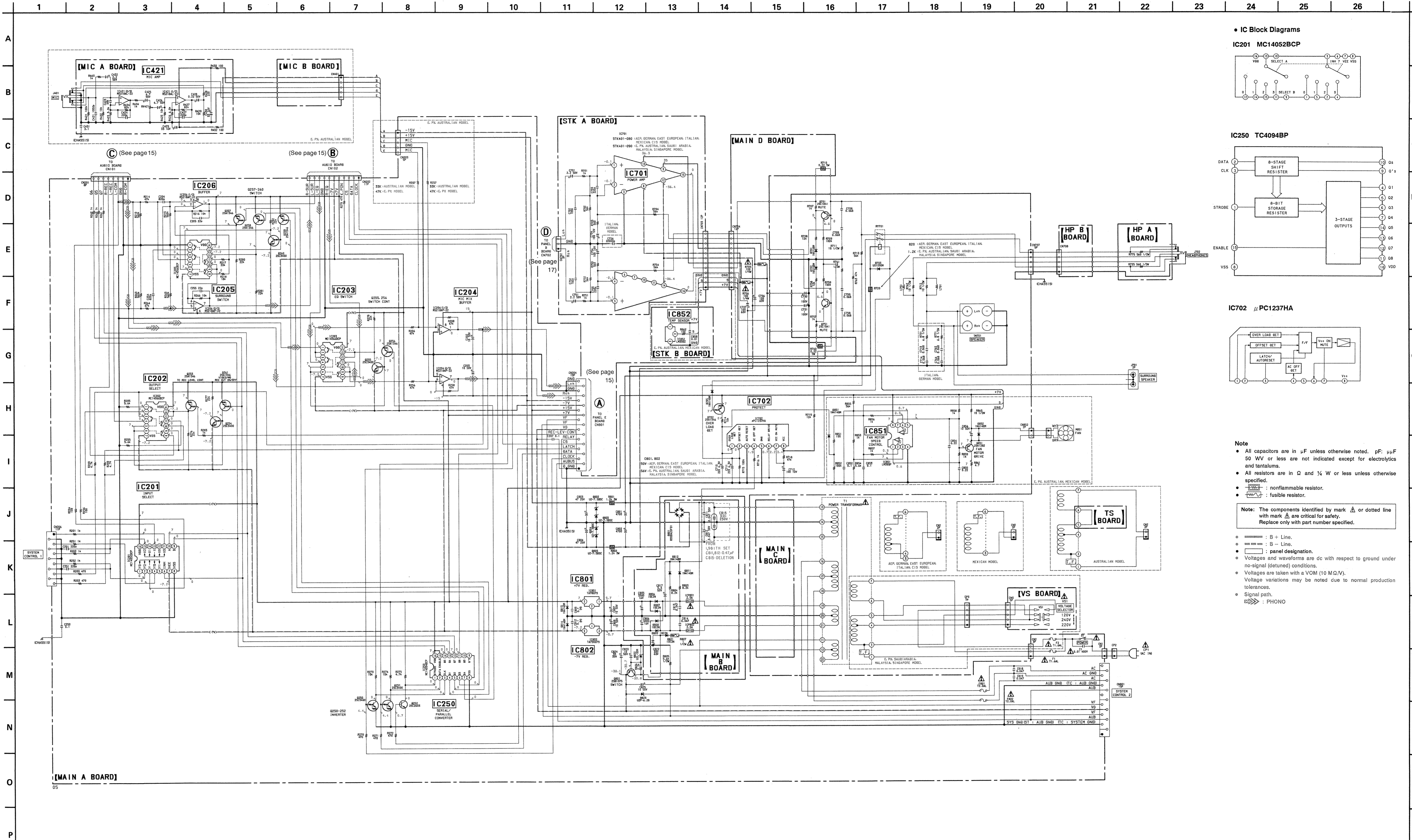
• See page 24 for Semiconductor Lead Layouts.

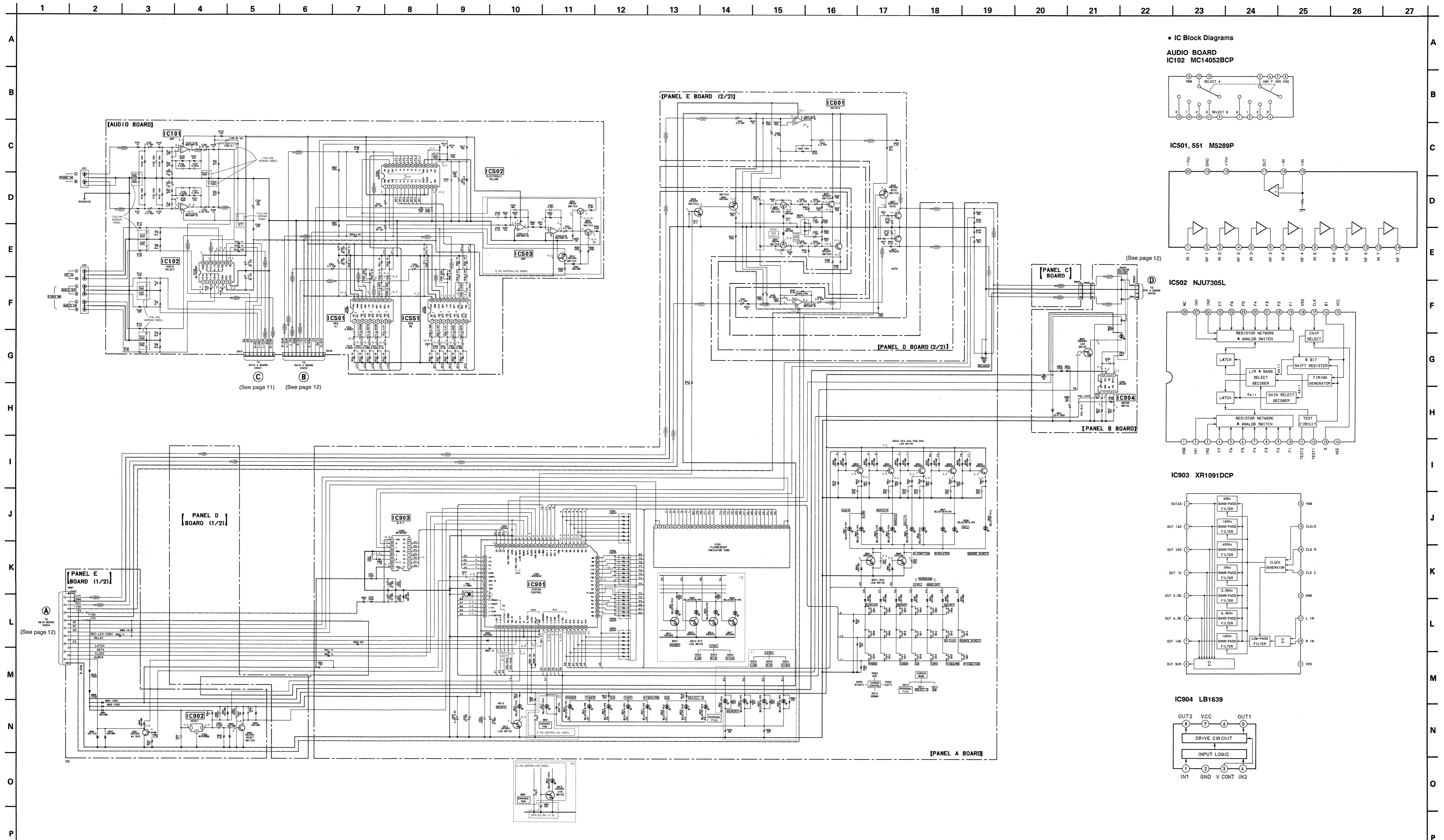
• Semiconductor Location

Ref. No.	Location
D701	F-10
D702	F-9
D703	G-11
D705	G-10
D801	G-15
D802	H-9
D803	I-9
D804	I-9
D805	I-9
D806	G-14
D807	G-14
D808	G-14
D809	G-13
D811	H-14
D812	H-14
D813	I-7
D814	H-7
D821	G-17
D822	I-16
D823	I-17
D851	F-10
D852	B-10
IC201	B-5
IC202	B-6
IC203	H-5
IC204	I-5
IC205	G-5
IC206	D-5
IC250	F-6
IC421	G-2
IC701	A-19
IC702	G-10
IC801	I-7
IC802	H-7
IC851	F-10
IC852	B-17
Q250	G-6
Q251	H-6
Q252	H-6
Q253	D-6
Q254	C-6
Q255	G-6
Q256	G-6
Q257	F-6
Q258	F-6
Q259	F-6
Q260	G-6
Q261	D-6
Q701	G-9
Q702	G-10
Q751	G-9
Q801	J-16
Q851	F-11

Note
• ○ : parts extracted from the component side.

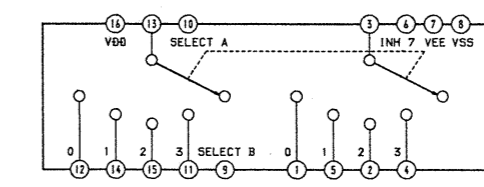




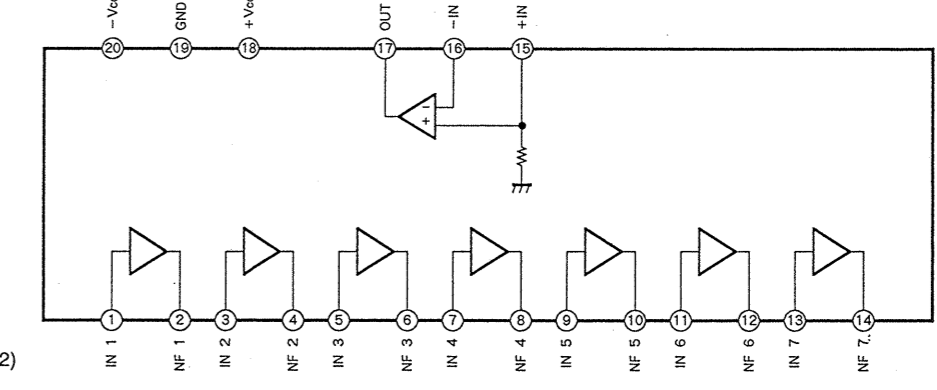


• IC Block Diagrams

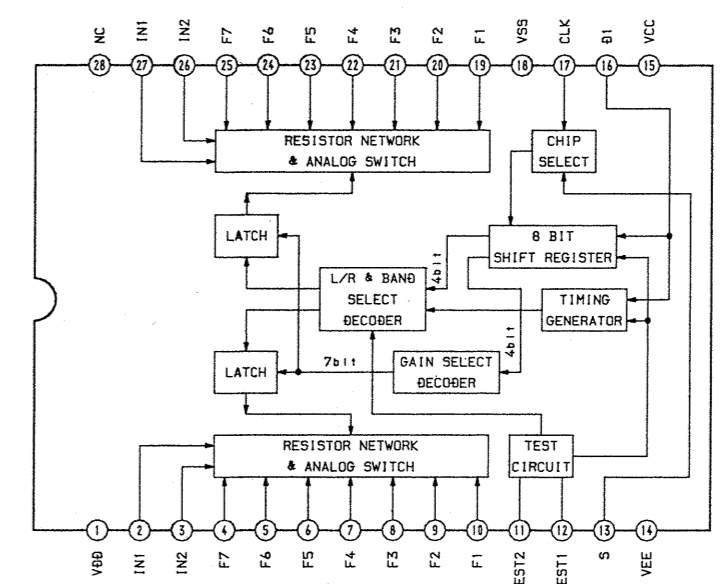
AUDIO BOARD
IC102 MC14052BCP



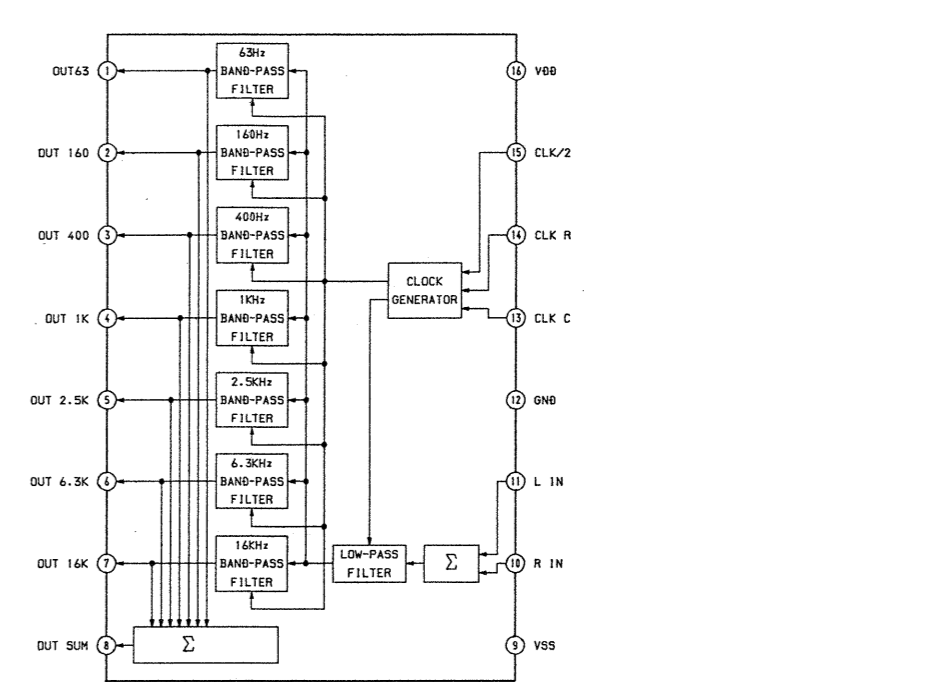
IC501, 551 M5289P



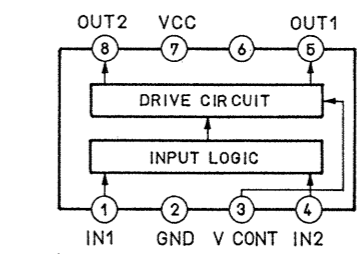
IC502 NJU7305L



IC903 XR1091DCP



IC904 LB1639



Note

- : parts extracted from the component side.
- △ : internal component.

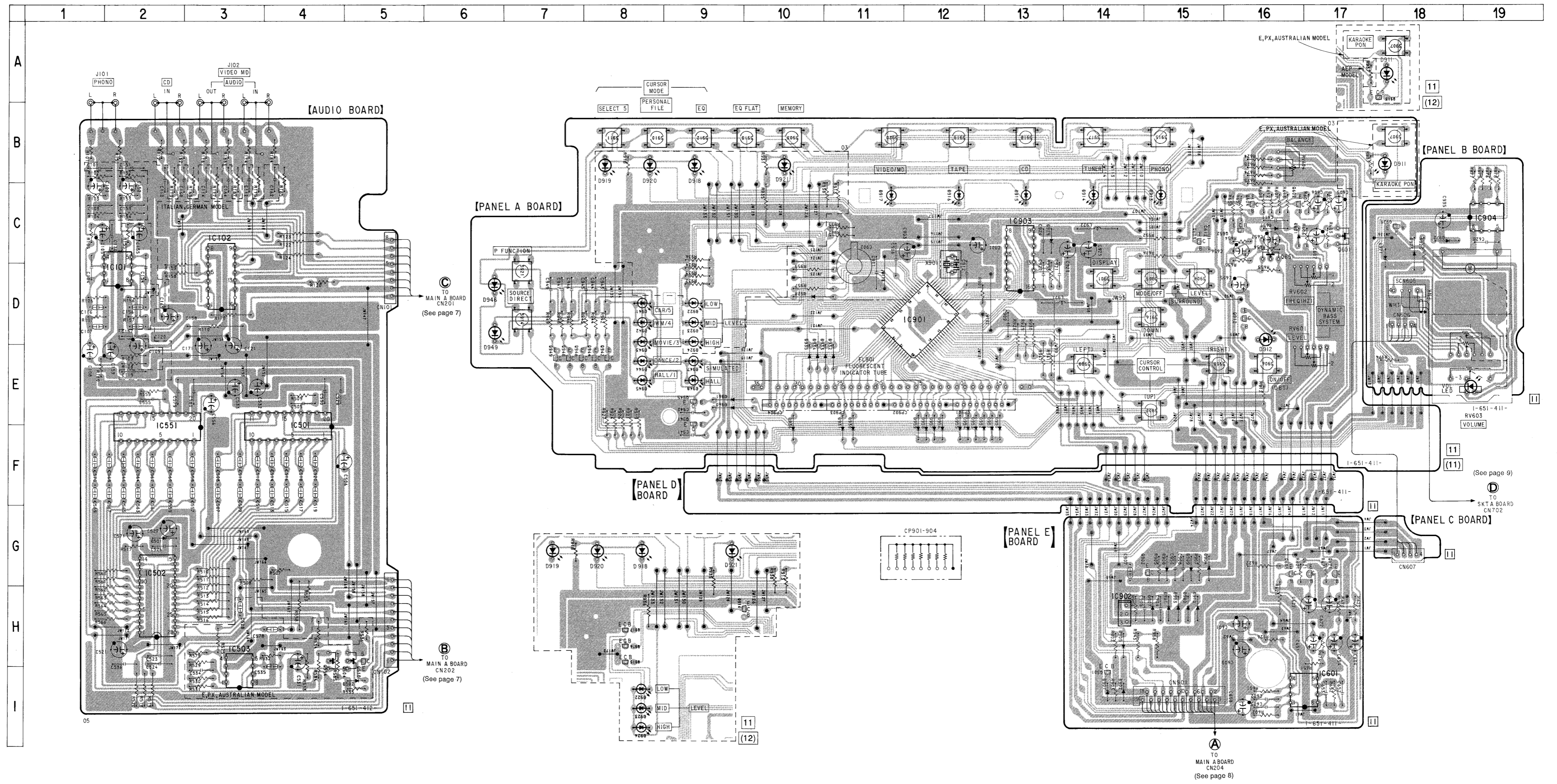
Note on Schematic Diagram:

- All capacitors are in μF unless otherwise noted. pF : μF 50 WV or less are not indicated except for electrolytics and tantalums.
- All resistors are in Ω and $\frac{1}{2}$ W or less unless otherwise specified.
- △ : internal component.
- : B+ Line.
- : B- Line.
- : panel designation.
- Voltagess and waveforms are dc with respect to ground under no-signal (detuned) conditions.
- Voltagess are taken with a VOM (10 $\text{M}\Omega$).
- Voltagess variations may be noted due to normal production tolerances.
- Signal path.
- ⊞ : PHONO

3-5. PANEL/AUDIO SECTION PRINTED WIRING BOARDS • See page 24 for Semiconductor Lead Layouts.

• Semiconductor Location

Ref. No.	Location	Ref. No.	Location
D501	G-2	D960	E-9
D502	I-5	D961	E-9
D601	C-16	D971	C-17
D651	C-16	D972	C-18
D901	I-14	D973	C-18
D902	I-14	D980	H-15
D903	H-15	D981	H-15
D904	G-15		
D905	H-14	IC101	C-2
D907	H-15	IC102	C-3
D908	G-15	IC501	F-4
D909	G-15	IC502	G-2
D910	H-15	IC503	H-3
D911	B-17	IC551	E-2
D912	D-16	IC601	I-16
D913	C-15	IC901	D-11
D914	C-14	IC902	H-14
D915	C-13	IC903	C-13
D916	C-12	IC904	C-19
D917	C-11		
D918	B-9	Q504	H-4
D919	B-8	Q510	H-5
D920	B-8	Q554	H-4
D921	B-10	Q601	C-17
D922	D-9	Q602	C-16
D923	D-9	Q603	C-15
D924	D-9	Q604	C-16
D928	D-10	Q605	G-16
D929	C-13	Q621	G-16
D930	F-11	Q651	C-16
D931	F-11	Q652	C-15
D932	F-11	Q671	G-17
D933	F-11	Q901	I-14
D934	F-10	Q902	G-14
D935	F-10	Q912	D-16
D936	F-10	Q913	A-18
D941	D-8	Q914	H-9
D942	D-8	Q915	H-8
D943	D-8	Q916	H-8
D944	F-8	Q917	H-8
D945	F-8	Q925	C-17
D946	D-6	Q941	E-9
D947	F-9	Q942	E-6
D948	F-9	Q944	E-8
D949	D-6	Q945	E-9
D950	F-12	Q946	E-7
D951	F-12	Q948	E-7
D952	F-12	Q949	E-7
D953	F-12		
D954	F-12		
D955	F-12		
D956	F-12		
D957	F-12		
D958	F-12		
D959	F-11		



3-6. IC PIN DESCRIPTION

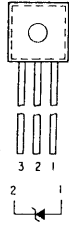
PANEL A BOARD IC901 μ PD78042GF-057-3B9

Pin No.	Pin Name	I/O	Description
1	7G	O	FL digit 7
2	6G	O	FL digit 6
3	5G	O	FL digit 5
4	4G	O	FL digit 4
5	3G	O	FL digit 3
6	2G	O	FL digit 2
7	1G	O	FL digit 1
8	VDD	—	VDD
9	KEY 3	I	KEY SCAN INPUT 3
10	KEY 2	I	KEY SCAN INPUT 2
11	KEY 1	I	KEY SCAN INPUT 1
12	L DBS	O	LED (DBS)
13	DBS	O	DBS control
14	AUB OUT	O	AU BUS OUTPUT
15	CLOCK	O	serial CLOCK line (NJU7305)
16	DATA	O	serial DATA line (NJU7305)
17	$\overline{\text{RESET}}$	I	RESET
18	LINE MUTE	O	(open-drain) LINE MUTE OUTPUT (Act. "H")
19	REC LEVEL CONT.	O	(open-drain) REC level control (EQ high \rightarrow "L")
20	AVSS	—	GND
21	VOL POSITION	I	volume position
22	F7	I	frequency 7 for speana
23	F6	I	frequency 6 for speana
24	F5	I	frequency 5 for speana
25	F4	I	frequency 4 for speana
26	F3	I	frequency 3 for speana
27	F2	I	frequency 2 for speana
28	F1	I	frequency 1 for speana
29	AVDD	I	VDD
30	AVREF	I	VDD (A/D reference)
31	AUB IN	I	AU BUS IN
32	XT2	—	N.C
33	VSS	—	GND
34	X1	I	crystal connection terminal
35	X2	O	system clock oscillation terminal
36	L-PHONO	O	LED (PHONO)
37	L-TUNER	O	LED (TUNER)
38	L-CD	O	LED (CD)
39	L-TAPE	O	LED (TAPE)
40	L-VIDEO/CD	O	LED (VIDEO)

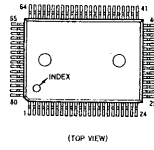
Pin No.	Pin Name	I/O	Description
41	L-EQ	O	LED (EQ)
42	L-S.5	O	LED (SELECT5)
43	L-P.FILE	O	LED (P.FILE)
44	VOL DOWN	O	VOLUME DOWN OUTPUT
45	VOL UP	O	VOLUME UP OUTPUT
46	CS	O	CS line (NJU7305)
47	AC OUT	I	AC OUT
48	IC	—	N.C (Vss)
49	K.PON	I	(open-drain) K.PON
50	LATCH	O	(open-drain) LATCH (4094)
51	RELAY	I	(open-drain) RELAY input
52	VDD	—	VDD
53	L-MEMORY	O	LED (MEMORY)
54	L-HIGH	O	LED (HIGH)
55	L-MID	O	LED (MID)
56	L-LOW	O	LED (LOW)
57	L-K.PON	O	LED (karaoke pon)
58	L-VOL	O	LED (volume)
59	S15	O	FL segment 15
60	S14	O	FL segment 14
61	S13	O	FL segment 13
62	S12	O	FL segment 12 (key scan output 7)
63	S11	O	FL segment 11 (key scan output 6)
64	S10	O	FL segment 10 (key scan output 5)
65	S9	O	FL segment 9 (key scan output 4)
66	S8	O	FL segment 8 (key scan output 3)
67	S7	O	FL segment 7 (key scan output 2)
68	S6	O	FL segment 6 (key scan output 1)
69	S5	O	FL segment 5
70	S4	O	FL segment 4
71	V-LOAD	I	POWER SUPPLY FOR PULL DOWN REGISTER
72	S3	O	FL segment 3
73	S2	O	FL segment 2
74	S1	O	FL segment 1
75	13G	O	FL digit 13
76	12G	O	FL digit 12
77	11G	O	FL digit 11
78	10G	O	FL digit 10
79	9G	O	FL digit 9
80	8G	O	FL digit 8

• Semiconductor Lead Layouts

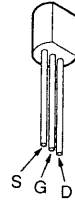
LM35DZ



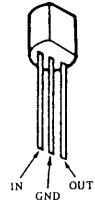
μ PD78042GF-057-3B9



2SK246-GR



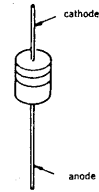
M51943BSL



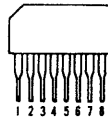
DTA-124ES
DTC124ES
2SC2603-EF
2SC3622A-LK



HZS30-2L
UZ-4.7BSA
11ES2



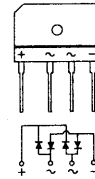
NJM2068L-D
 μ PC1237HA



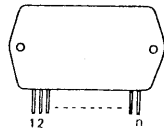
2SB733-34



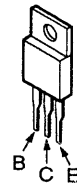
RBV-602-01



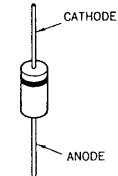
STK-401-080
STK-401-090



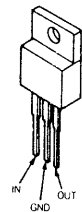
2SB1094-LK



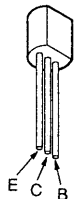
UZL-6L3
UZL-6M2
UZL-7L3
UZP-6.2B
UZ-7.5BSC
1N4148M
1S1585
10E2N



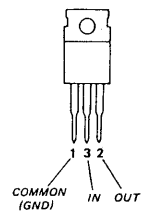
TA7807S



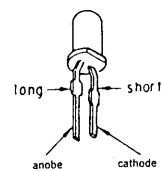
2SC1841-PAFAEA



TA79007S



SEL2210S
SEL2210S-CD



SECTION 4 EXPLODED VIEWS

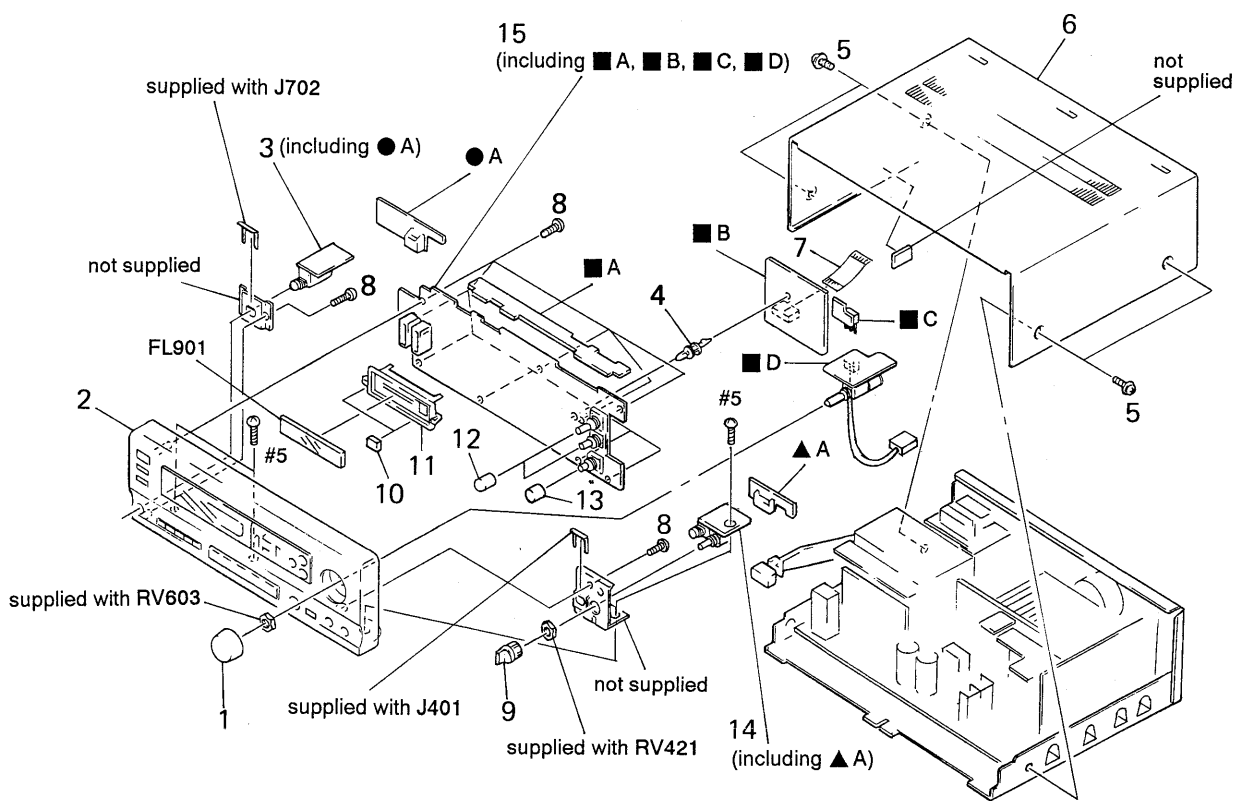
NOTE:

- -XX and -X mean standardized parts, so they may have some difference from the original one.
- Color Indication of Appearance Parts
 Example:
 KNOB, BALANCE (WHITE) ... (RED)
 ↑ ↑
 Parts Color Cabinet's Color
- Items marked “*” are not stocked since they are seldom required for routine service. Some delay should be anticipated when ordering these items.
- The mechanical parts with no reference number in the exploded views are not supplied.
- Hardware (# mark) list and accessories and packing materials are given in the last of the electrical parts list.

The components identified by mark or dotted line with mark are critical for safety. Replace only with part number specified.

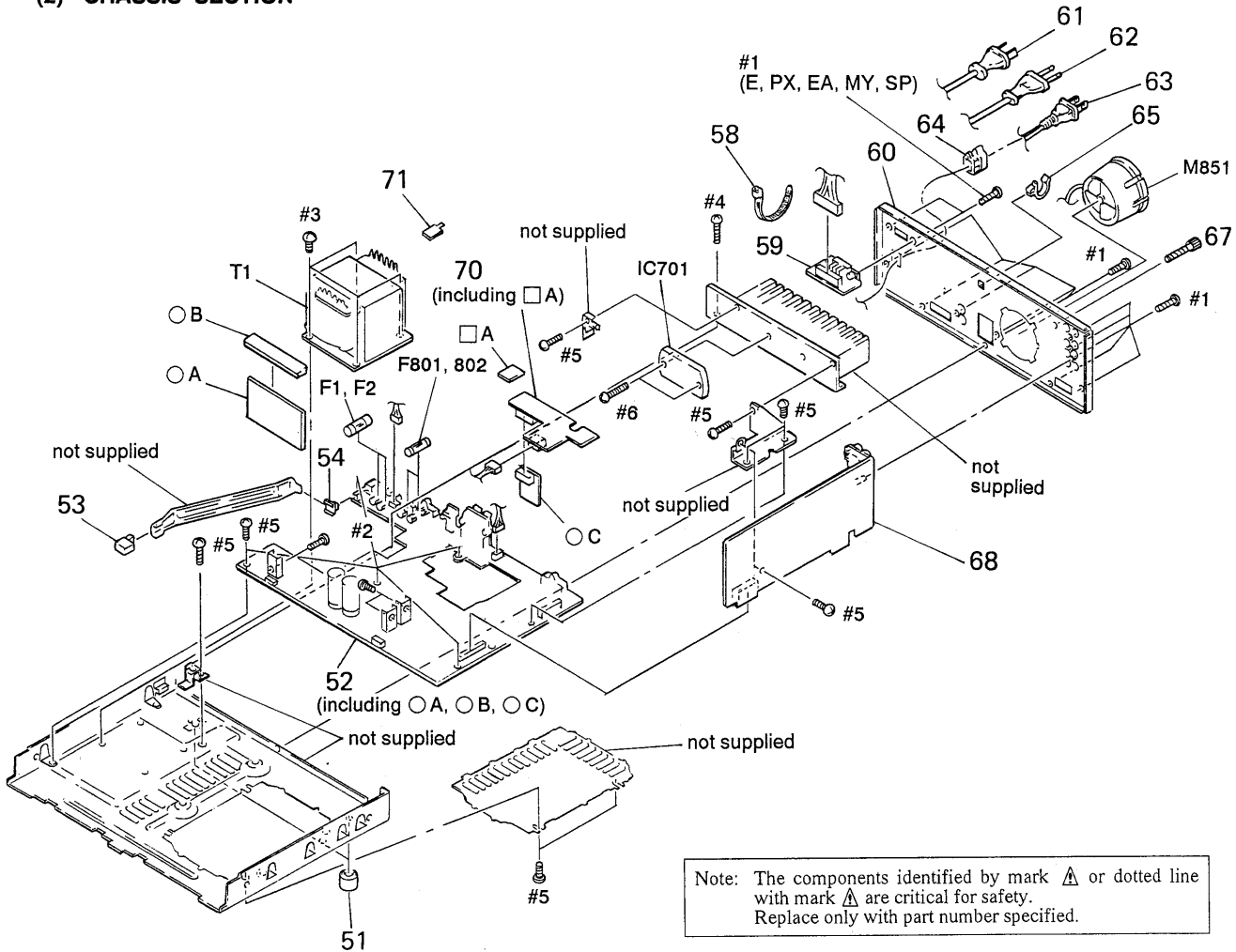
- Abbreviation
 AU: Australian G: German EA: Saudi Arabia EE: East European IT: Italian MX: Mexican
 MY: Malaysia SB: Singapore E2 model: 120V AC E3 model: 240V AC E4 model: 120-240V AC

(1) FRONT PANEL SECTION



Ref. No.	Part No.	Description	Remark	Ref. No.	Part No.	Description	Remark
1	X-4944-655-1	KNOB (VOL) ASSY		9	4-950-652-01	KNOB (DIA. 12), ROUND (AU, EA, E2, E3, MX, MY, PX, SP, E4)	
2	X-4944-651-1	PANEL ASSY, FRONT (AEP, G, EE, IT, CIS)		* 10	4-921-941-21	CUSHION (FL)	
2	X-4944-657-1	PANEL ASSY, FRONT (AU, E2, MX, PX, E4)		* 11	4-923-103-01	HOLDER, FL TUBE	
2	X-4944-658-1	PANEL ASSY, FRONT (EA, E3, MY, SP)		12	4-955-744-21	KNOB (BA)	
3	1-651-414-11	HP BOARD		13	3-349-039-11	KNOB (VOL)	
4	4-943-687-01	HOLDER, PC BOARD		* 14	1-651-413-11	MIC BOARD (AU, EA, E2, E3, MX, MY, PX, SP, E4)	
5	3-363-099-01	SCREW (CASE 3 TP2)		* 15	A-4369-456-A	PANEL BOARD, COMPLETE (AEP, G, EE, IT, CIS)	
6	4-949-912-71	CASE (AEP, G, EE, IT, CIS)		* 15	A-4369-467-A	PANEL BOARD, COMPLETE (AU, EA, E2, E3, MX, MY, PX, SP, E4)	
6	4-949-912-91	CASE (AU, EA, E2, E3, MX, MY, PX, SP, E4)		FL901	1-517-266-21	INDICATOR TUBE, FLUORESCENT	
7	1-765-151-11	WIRE (FLAT TYPE) (19 CORE)					
8	4-951-620-01	SCREW (2. 6X8), +BVTP					

(2) CHASSIS SECTION



Note: The components identified by mark ▲ or dotted line with mark ▲ are critical for safety. Replace only with part number specified.

Ref. No.	Part No.	Description	Remark
51	4-931-169-01	FOOT	
* 52	A-4369-454-A	MAIN BOARD, COMPLETE (AEP, EE, CIS)	
* 52	A-4369-461-A	MAIN BOARD, COMPLETE (G, IT)	
* 52	A-4369-464-A	MAIN BOARD, COMPLETE (EA, E2, E3, MY, PX, SP, E4)	
* 52	A-4369-481-A	MAIN BOARD, COMPLETE (AU)	
* 52	A-4371-373-A	MAIN BOARD, COMPLETE (MX)	
53	4-964-965-01	BUTTON (POW)	
54	4-866-342-00	JOINT (B), KNOB	
58	4-953-346-01	CLAMP, LEAD (AEP, G, AU, EE, IT, MX, CIS)	
* 59	1-650-410-11	VS BOARD (E2, E3, PX, EA, MY, SP, E4)	
* 60	4-964-974-01	PANEL (B3120), BACK (AEP, EE, IT, CIS)	
* 60	4-964-974-11	PANEL (B3120), BACK (AEP)	
* 60	4-964-974-31	PANEL (B3120), BACK (G)	
* 60	4-964-974-41	PANEL (B3120), BACK (EA, E2, E3, PX, E4)	
* 60	4-964-974-51	PANEL (B3120), BACK (MY, SP)	
* 60	4-964-974-61	PANEL (B3120), BACK (AU)	
* 60	4-964-974-71	PANEL (B3120), BACK (MX)	
▲61	1-751-355-11	CORD, POWER (AU)	
▲62	1-575-654-11	CORD, POWER (AEP, G, EA, EE, IT, MY, SP, CIS)	
▲63	1-575-656-11	CORD, POWER (E2, E3, E4, MX, PX)	
* 64	3-703-244-00	BUSHING (2104), CORD (AEP, G, AU, EA, EE, IT, MY, SP, CIS)	
* 64	3-703-571-11	BUSHING (S) (4516), CORD (E2, E3, MX, PX, E4)	
* 65	4-949-235-01	HOOK	

Ref. No.	Part No.	Description	Remark
67	4-947-010-01	SCREW, FEEDER FIXED	
* 68	A-4369-457-A	AUDIO BOARD, COMPLETE (AEP, EE, CIS)	
* 68	A-4369-463-A	AUDIO BOARD, COMPLETE (G, IT)	
* 68	A-4369-468-A	AUDIO BOARD, COMPLETE (AU, EA, E2, E3, MX, MY, PX, SP, E4)	
* 70	A-4369-455-A	STK BOARD, COMPLETE (AEP, EE, CIS)	
* 70	A-4369-462-A	STK BOARD, COMPLETE (G, IT)	
* 70	A-4369-465-A	STK BOARD, COMPLETE (AU, EA, E2, E3, MY, PX, SP, E4)	
* 70	A-4371-374-A	STK BOARD, COMPLETE (MX)	
* 71	1-652-079-11	TS BOARD (AU)	
▲F1	1-532-259-00	FUSE, TIME-LAG (T1, 6A)	
▲F2	1-532-259-00	FUSE, TIME-LAG (T1, 6A) (E2, E3, E4, PX, MY, SP)	
▲F801	1-532-203-00	FUSE, TIME-LAG (T2A)	
▲F802	1-532-203-00	FUSE, TIME-LAG (T2A)	
M851	X-4942-029-1	CASE ASSY, FAN (AU, EA, E2, E3, MX, MY, PX, SP, E4)	
▲T1	1-423-529-11	TRANSFORMER, POWER (AEP, G, EE, IT, CIS)	
▲T1	1-423-530-11	TRANSFORMER, POWER (AU, EA, E2, E3, MY, PX, SP, E4)	
▲T1	1-426-781-11	TRANSFORMER, POWER (MX)	
IC701	8-749-922-94	IC STK-401-080 (AEP, G, EE, IT, MX, CIS)	
IC701	8-749-922-95	IC STK-401-090 (AU, EA, E2, E3, MY, PX, SP, E4)	

SECTION 5 ELECTRICAL PARTS LIST

AUDIO

NOTE:

- Due to standardization, replacements in the parts list may be different from the parts specified in the diagrams or the components used on the set.
- -XX and -X mean standardized parts, so they may have some difference from the original one.
- RESISTORS
All resistors are in ohms.
METAL: Metal-film resistor.
METAL OXIDE: Metal oxide-film resistor.
F: nonflammable

- Items marked "*" are not stocked since they are seldom required for routine service. Some delay should be anticipated when ordering these items.
- SEMICONDUCTORS
In each case, u: μ , for example:
uA.: μ A. uPA.: μ PA.
uPB.: μ PB. uPC.: μ PC. uPD.: μ PD.
- CAPACITORS
uF: μ F
- COILS
uH: μ H

The components identified by mark Δ or dotted line with mark Δ are critical for safety. Replace only with part number specified.

When indicating parts by reference number, please include the board.

- Abbreviation
- AU: Australian
- G: German
- EA: Saudi Arabia
- EE: East European
- IT: Italian
- MX: Mexican
- MY: Malaysia
- SP: Singapore
- E2 model: 120V AC
- E3 model: 240V AC
- E4 model: 120-240V AC

Ref. No.	Part No.	Description	Remark	Ref. No.	Part No.	Description	Remark
*	A-4369-457-A	AUDIO BOARD, COMPLETE *****	(AEP, EE, CIS)	C507	1-136-177-00	FILM 1uF 5%	50V
*	A-4369-463-A	AUDIO BOARD, COMPLETE *****	(G, IT)	C508	1-136-163-00	FILM 0.068uF 5%	50V
*	A-4369-468-A	AUDIO BOARD, COMPLETE (AU, EA, E2, E3, MX, MY, PX, SP, E4) *****		C509	1-136-173-00	FILM 0.47uF 5%	50V
		< CAPACITOR >		C510	1-136-158-00	FILM 0.027uF 5%	50V
C101	1-162-288-31	CERAMIC 330PF 10%	50V (G, IT)	C511	1-136-168-00	FILM 0.18uF 5%	50V
C102	1-126-161-11	ELECT 2.2uF 20%	50V	C512	1-136-153-00	FILM 0.01uF 5%	50V
C103	1-162-282-31	CERAMIC 100PF 10%	50V	C513	1-136-163-00	FILM 0.068uF 5%	50V
C104	1-162-219-31	CERAMIC 68PF 5%	50V	C514	1-130-478-00	MYLAR 0.0039uF 5%	50V
C105	1-124-910-11	ELECT 47uF 20%	50V	C515	1-136-159-00	FILM 0.033uF 5%	50V
C106	1-130-480-00	MYLAR 0.0056uF 5%	50V	C516	1-130-474-00	MYLAR 0.0018uF 5%	50V
C107	1-106-347-00	MYLAR 1500PF 5%	200V	C517	1-136-154-00	FILM 0.012uF 5%	50V
C108	1-124-464-11	ELECT 0.22uF 20%	50V	C518	1-130-469-00	MYLAR 680PF 5%	50V
C109	1-104-792-51	ELECT 33uF 20%	16V	C519	1-106-359-00	MYLAR 4700PF 5%	200V
C110	1-162-286-31	CERAMIC 220PF 10%	50V (G, IT)	C520	1-110-340-11	MYLAR 270PF 5%	50V
C112	1-162-286-31	CERAMIC 220PF 10%	50V (G, IT)	C521	1-104-792-51	ELECT 33uF 20%	16V
C114	1-162-286-31	CERAMIC 220PF 10%	50V (G, IT)	C523	1-162-282-31	CERAMIC 100PF 10%	50V
C119	1-162-286-31	CERAMIC 220PF 10%	50V (G, IT)	C524	1-162-282-31	CERAMIC 100PF 10%	50V
C121	1-104-792-51	ELECT 33uF 20%	16V	C526	1-164-159-11	CERAMIC 0.1uF	50V
C151	1-162-288-31	CERAMIC 330PF 10%	50V (G, IT)	C527	1-104-792-51	ELECT 33uF 20%	16V
C152	1-126-161-11	ELECT 2.2uF 20%	50V	C528	1-136-169-00	FILM 0.22uF 5%	50V (AU, EA, E2, E3, MX, MY, PX, SP, E4)
C153	1-162-282-31	CERAMIC 100PF 10%	50V	C529	1-164-159-11	CERAMIC 0.1uF	50V
C154	1-162-219-31	CERAMIC 68PF 5%	50V	C530	1-164-159-11	CERAMIC 0.1uF	50V
C155	1-124-910-11	ELECT 47uF 20%	50V	C531	1-126-163-11	ELECT 4.7uF 20%	50V (AU, EA, E2, E3, MX, MY, PX, SP, E4)
C156	1-130-480-00	MYLAR 0.0056uF 5%	50V	C532	1-104-792-51	ELECT 33uF 20%	16V
C157	1-106-347-00	MYLAR 1500PF 5%	200V	C533	1-104-792-51	ELECT 33uF 20%	16V
C158	1-124-464-11	ELECT 0.22uF 20%	50V	C534	1-162-219-31	CERAMIC 68PF 5%	50V (AU, EA, E2, E3, MX, MY, PX, SP, E4)
C159	1-104-792-51	ELECT 33uF 20%	16V	C535	1-106-343-00	MYLAR 1000PF 5%	200V (AU, EA, E2, E3, MX, MY, PX, SP, E4)
C160	1-162-286-31	CERAMIC 220PF 10%	50V (G, IT)	C536	1-162-290-31	CERAMIC 470PF 10%	50V
C162	1-162-286-31	CERAMIC 220PF 10%	50V (G, IT)	C555	1-162-286-31	CERAMIC 220PF 10%	50V
C164	1-162-286-31	CERAMIC 220PF 10%	50V (G, IT)	C556	1-126-163-11	ELECT 4.7uF 20%	50V
C169	1-162-286-31	CERAMIC 220PF 10%	50V (G, IT)	C557	1-136-177-00	FILM 1uF 5%	50V
C171	1-104-792-51	ELECT 33uF 20%	16V	C558	1-136-163-00	FILM 0.068uF 5%	50V
C505	1-162-286-31	CERAMIC 220PF 10%	50V	C559	1-136-173-00	FILM 0.47uF 5%	50V
C506	1-126-163-11	ELECT 4.7uF 20%	50V	C560	1-136-158-00	FILM 0.027uF 5%	50V
				C561	1-136-168-00	FILM 0.18uF 5%	50V
				C562	1-136-153-00	FILM 0.01uF 5%	50V

AUDIO

Ref. No.	Part No.	Description	Remark	Ref. No.	Part No.	Description	Remark
C563	1-136-163-00	FILM	0.068uF 5% 50V	R104	1-249-441-11	CARBON 100K 5% 1/4W	
C564	1-130-478-00	MYLAR	0.0039uF 5% 50V	R105	1-249-416-11	CARBON 820 5% 1/4W F	
C565	1-136-159-00	FILM	0.033uF 5% 50V	R106	1-247-897-11	CARBON 560K 5% 1/4W	
C566	1-130-474-00	MYLAR	0.0018uF 5% 50V	R107	1-249-437-11	CARBON 47K 5% 1/4W	
C567	1-136-154-00	FILM	0.012uF 5% 50V	R108	1-249-417-11	CARBON 1K 5% 1/4W F	
C568	1-130-469-00	MYLAR	680PF 5% 50V	R109	1-249-441-11	CARBON 100K 5% 1/4W	
C569	1-106-359-00	MYLAR	4700PF 5% 200V	R110	1-247-807-31	CARBON 100 5% 1/4W	
C570	1-110-340-11	MYLAR	270PF 5% 50V	R112	1-249-423-11	CARBON 3.3K 5% 1/4W F	
C571	1-104-792-51	ELECT	33uF 20% 16V	R113	1-249-427-11	CARBON 6.8K 5% 1/4W F	
C578	1-136-169-00	FILM	0.22uF 5% 50V (AU, EA, E2, E3, MX, MY, PX, SP, E4)	R114	1-249-423-11	CARBON 3.3K 5% 1/4W F	
C579	1-164-159-11	CERAMIC	0.1uF 50V	R115	1-249-427-11	CARBON 6.8K 5% 1/4W F	
C580	1-164-159-11	CERAMIC	0.1uF 50V	R116	1-249-413-11	CARBON 470 5% 1/4W F	
< CONNECTOR >				R117	1-247-903-00	CARBON 1M 5% 1/4W	
CN101	1-691-178-11	CONNECTOR (BOARD TO BOARD)	8P	R120	1-247-807-31	CARBON 100 5% 1/4W	
CN102	1-691-181-11	CONNECTOR (BOARD TO BOARD)	11P	R122	1-249-417-11	CARBON 1K 5% 1/4W F	
< DIODE >				R123	1-249-417-11	CARBON 1K 5% 1/4W F	
D501	8-719-000-54	DIODE UZL-6L3		R124	1-249-417-11	CARBON 1K 5% 1/4W F	
D502	8-719-987-63	DIODE 1N4148M	(AU, EA, E2, E3, MX, MY, PX, SP, E4)	R151	1-249-417-11	CARBON 1K 5% 1/4W F	
< IC >				R152	1-249-441-11	CARBON 100K 5% 1/4W	
IC101	8-759-636-74	IC M5218AP-22		R153	1-249-417-11	CARBON 1K 5% 1/4W F	
IC102	8-759-000-48	IC MC14052BCP		R154	1-249-441-11	CARBON 100K 5% 1/4W	
IC501	8-759-633-78	IC M5289P		R155	1-249-416-11	CARBON 820 5% 1/4W F	
IC502	8-759-081-01	IC NJU7305L		R156	1-247-897-11	CARBON 560K 5% 1/4W	
IC503	8-759-636-74	IC M5218AP-22	(AU, EA, E2, E3, MX, MY, PX, SP, E4)	R157	1-249-437-11	CARBON 47K 5% 1/4W	
IC551	8-759-633-78	IC M5289P		R158	1-249-417-11	CARBON 1K 5% 1/4W F	
< JACK >				R159	1-249-441-11	CARBON 100K 5% 1/4W	
J101	1-565-352-11	JACK, PIN 2P (PHONO)		R160	1-247-807-31	CARBON 100 5% 1/4W	
J102	1-565-320-61	JACK, PIN 6P (CD/VIDEO MD)		R162	1-249-423-11	CARBON 3.3K 5% 1/4W F	
< TRANSISTOR >				R163	1-249-427-11	CARBON 6.8K 5% 1/4W F	
Q504	8-729-224-62	TRANSISTOR 2SK246-GR	(AU, EA, E2, E3, MX, MY, PX, SP, E4)	R164	1-249-423-11	CARBON 3.3K 5% 1/4W F	
Q510	8-729-900-63	TRANSISTOR DTA124ES	(AU, EA, E2, E3, MX, MY, PX, SP, E4)	R165	1-249-427-11	CARBON 6.8K 5% 1/4W F	
Q554	8-729-224-62	TRANSISTOR 2SK246-GR	(AU, EA, E2, E3, MX, MY, PX, SP, E4)	R166	1-249-413-11	CARBON 470 5% 1/4W F	
< RESISTOR >				R167	1-247-903-00	CARBON 1M 5% 1/4W	
R101	1-249-417-11	CARBON 1K 5% 1/4W	F	R170	1-247-807-31	CARBON 100 5% 1/4W	
R102	1-249-441-11	CARBON 100K 5% 1/4W		R507	1-247-887-00	CARBON 220K 5% 1/4W	
R103	1-249-417-11	CARBON 1K 5% 1/4W	F	R508	1-249-427-11	CARBON 6.8K 5% 1/4W F	
				R509	1-249-427-11	CARBON 6.8K 5% 1/4W F	
				R510	1-247-903-00	CARBON 1M 5% 1/4W	
				R511	1-247-903-00	CARBON 1M 5% 1/4W	
				R512	1-247-903-00	CARBON 1M 5% 1/4W	
				R513	1-247-903-00	CARBON 1M 5% 1/4W	
				R514	1-247-903-00	CARBON 1M 5% 1/4W	
				R515	1-247-903-00	CARBON 1M 5% 1/4W	
				R516	1-247-903-00	CARBON 1M 5% 1/4W	
				R517	1-249-408-11	CARBON 180 5% 1/4W F	
				R518	1-249-417-11	CARBON 1K 5% 1/4W F	
				R519	1-249-417-11	CARBON 1K 5% 1/4W F	
				R520	1-249-413-11	CARBON 470 5% 1/4W F	

AUDIO**HP (A)****HP (B)****MAIN (A)**

Ref. No.	Part No.	Description	Remark
R525	1-249-429-11	CARBON 10K 5% 1/4W (AU, EA, E2, E3, MX, MY, PX, SP, E4)	
R529	1-249-429-11	CARBON 10K 5% 1/4W (AU, EA, E2, E3, MX, MY, PX, SP, E4)	
R530	1-249-413-11	CARBON 470 5% 1/4W F (AU, EA, E2, E3, MX, MY, PX, SP, E4)	
R531	1-249-429-11	CARBON 10K 5% 1/4W (AU, EA, E2, E3, MX, MY, PX, SP, E4)	
R532	1-249-429-11	CARBON 10K 5% 1/4W (AU, EA, E2, E3, MX, MY, PX, SP, E4)	
R533	1-249-429-11	CARBON 10K 5% 1/4W (AU, EA, E2, E3, MX, MY, PX, SP, E4)	
R534	1-249-427-11	CARBON 6.8K 5% 1/4W F (AU, EA, E2, E3, MX, MY, PX, SP, E4)	
R535	1-247-895-00	CARBON 470K 5% 1/4W (AU, EA, E2, E3, MX, MY, PX, SP, E4)	
R536	1-249-441-11	CARBON 100K 5% 1/4W (AU, EA, E2, E3, MX, MY, PX, SP, E4)	
R557	1-247-887-00	CARBON 220K 5% 1/4W	
R558	1-249-427-11	CARBON 6.8K 5% 1/4W F	
R559	1-249-427-11	CARBON 6.8K 5% 1/4W F	
R560	1-247-903-00	CARBON 1M 5% 1/4W	
R561	1-247-903-00	CARBON 1M 5% 1/4W	
R562	1-247-903-00	CARBON 1M 5% 1/4W	
R563	1-247-903-00	CARBON 1M 5% 1/4W	
R564	1-247-903-00	CARBON 1M 5% 1/4W	
R565	1-247-903-00	CARBON 1M 5% 1/4W	
R566	1-247-903-00	CARBON 1M 5% 1/4W	
R575	1-249-429-11	CARBON 10K 5% 1/4W (AU, EA, E2, E3, MX, MY, PX, SP, E4)	
R584	1-249-427-11	CARBON 6.8K 5% 1/4W F (AU, EA, E2, E3, MX, MY, PX, SP, E4)	
R585	1-247-895-00	CARBON 470K 5% 1/4W (AU, EA, E2, E3, MX, MY, PX, SP, E4)	

Ref. No.	Part No.	Description	Remark
*	1-651-414-11	HP BOARD ***** HP BOARD (A) ***** < CONNECTOR >	
* CN708	1-569-500-11	PIN, CONNECTOR 5P	
		HP BOARD (B) ***** < JACK >	
J702	1-507-854-00	JACK, PHONE (HEADPHONES) < RESISTOR >	
R725	1-247-749-11	CARBON 560 5% 1/2W	
R775	1-247-749-11	CARBON 560 5% 1/2W	

*	A-4369-454-A	MAIN BOARD, COMPLETE (AEP, EE, CIS) *****	
*	A-4369-461-A	MAIN BOARD, COMPLETE (G, IT) *****	
*	A-4369-464-A	MAIN BOARD, COMPLETE (EA, E2, E3, MY, PX, SP, E4) *****	
*	A-4369-481-A	MAIN BOARD, COMPLETE (AU) *****	
*	A-4371-373-A	MAIN BOARD, COMPLETE (MX) *****	
		1-533-293-11 FUSE HOLDER	
*	3-309-144-21	HEAT SINK	
*	4-941-237-01	HEAT SINK	
*	4-942-204-01	PLATE, GROUND	
	7-682-547-09	SCREW +BVTT 3X6 (S)	
		MAIN BOARD (A) ***** < CAPACITOR >	
△C1	1-161-744-51	CERAMIC 0.01uF	400V
C201	1-162-286-31	CERAMIC 220PF	10% 50V
C202	1-126-059-11	ELECT 10uF	20% 50V
C203	1-126-059-11	ELECT 10uF	20% 50V
C204	1-162-293-31	CERAMIC 820PF	10% 50V

The components identified by mark △ or dotted line with mark △ are critical for safety. Replace only with part number specified.

MAIN (A)

Ref. No.	Part No.	Description	Remark
C205	1-162-207-31	CERAMIC 22PF 5%	50V
C207	1-164-159-11	CERAMIC 0.1uF	50V
C250	1-164-159-11	CERAMIC 0.1uF	50V
C251	1-162-286-31	CERAMIC 220PF 10%	50V
C254	1-162-293-31	CERAMIC 820PF 10%	50V
C255	1-162-207-31	CERAMIC 22PF 5%	50V
C708	1-136-163-00	FILM 0.068uF 5%	50V
C709	1-136-163-00	FILM 0.068uF 5%	50V
C710	1-124-587-11	ELECT 220uF 20%	6.3V
C711	1-124-587-11	ELECT 220uF 20%	6.3V
C712	1-124-994-11	ELECT 100uF 20%	10V
C713	1-136-163-00	FILM 0.068uF 5%	50V (G, IT)
C714	1-136-163-00	FILM 0.068uF 5%	50V (G, IT)
C730	1-124-791-11	ELECT 1.0uF 20%	100V
C731	1-124-791-11	ELECT 1.0uF 20%	100V
C758	1-136-163-00	FILM 0.068uF 5%	50V
C759	1-136-163-00	FILM 0.068uF 5%	50V
C763	1-136-163-00	FILM 0.068uF 5%	50V (G, IT)
C764	1-136-163-00	FILM 0.068uF 5%	50V (G, IT)
C801	1-126-138-11	ELECT 4700uF 20%	50V (AEP, G, EE, IT, MX, CIS)
C801	1-126-258-11	ELECT 4700uF 20%	56V (AU, EA, E2, E3, MY, PX, SP, E4)
C802	1-126-138-11	ELECT 4700uF 20%	50V (AEP, G, EE, IT, MX, CIS)
C802	1-126-258-11	ELECT 4700uF 20%	56V (AU, EA, E2, E3, MY, PX, SP, E4)
C803	1-124-910-11	ELECT 47uF 20%	50V
C804	1-124-910-11	ELECT 47uF 20%	50V
C807	1-126-059-11	ELECT 10uF 20%	50V
C808	1-126-059-11	ELECT 10uF 20%	50V
C809	1-136-165-00	FILM 0.1uF 5%	50V
C810	1-136-165-00	FILM 0.1uF 5%	50V
C818	1-136-161-00	FILM 0.047uF 5%	50V
C819	1-136-161-00	FILM 0.047uF 5%	50V
C823	1-126-059-11	ELECT 10uF 20%	50V
C824	1-126-696-11	ELECT 33uF 20%	35V
C825	1-126-059-11	ELECT 10uF 20%	50V
C852	1-164-159-11	CERAMIC 0.1uF	50V (AU, EA, E2, E3, MX, MY, PX, SP, E4)
C853	1-164-159-11	CERAMIC 0.1uF	50V (AU, EA, E2, E3, MX, MY, PX, SP, E4)
C854	1-136-169-00	FILM 0.22uF 5%	50V (AU, EA, E2, E3, MX, MY, PX, SP, E4)
C855	1-136-169-00	FILM 0.22uF 5%	50V (AU, EA, E2, E3, MX, MY, PX, SP, E4)
C856	1-126-059-11	ELECT 10uF 20%	50V (AU, EA, E2, E3, MX, MY, PX, SP, E4)

Ref. No.	Part No.	Description	Remark
		< CONNECTOR >	
CN1	1-564-321-00	PIN, CONNECTOR 2P	
* CN2	1-535-139-00	BASE POST 22MM (10MM PITCH) 2P	(AEP, G, EE, IT, MX, CIS, AU)
* CN2	1-535-140-00	BASE POST 22MM (10MM PITCH) 3P	(EA, E2, E3, MY, PX, SP, E4)
CN201	1-691-165-11	PIN, CONNECTOR 8P	
CN202	1-691-168-11	PIN, CONNECTOR 11P	
* CN203	1-569-491-11	SOCKET, CONNECTOR 5P	(AU, EA, E2, E3, MX, MY, PX, SP, E4)
CN204	1-568-802-11	SOCKET, CONNECTOR 19P	
* CN206	1-566-858-41	SOCKET, CONNECTOR 11P	
* CN707	1-569-491-11	SOCKET, CONNECTOR 5P	
* CN801	1-566-859-11	SOCKET, CONNECTOR 15P	
CN852	1-564-505-11	PLUG, CONNECTOR 2P	(AU, EA, E2, E3, MX, MY, PX, SP, E4)
		< DIODE >	
D701	8-719-987-63	DIODE 1N4148M	
D702	8-719-987-63	DIODE 1N4148M	
D703	8-719-815-85	DIODE 1S1585	
D705	8-719-987-63	DIODE 1N4148M	
D802	8-719-010-55	DIODE UZ-7.5BSC	
D803	8-719-010-55	DIODE UZ-7.5BSC	
D804	8-719-010-55	DIODE UZ-7.5BSC	
D805	8-719-010-55	DIODE UZ-7.5BSC	
D813	8-719-987-63	DIODE 1N4148M	
D814	8-719-987-63	DIODE 1N4148M	
D822	8-719-934-22	DIODE HZS30-2L	
D823	8-719-014-74	DIODE UZP-6.2B	
D851	8-719-987-63	DIODE 1N4148M	(AU, EA, E2, E3, MX, MY, PX, SP, E4)
D852	8-719-987-63	DIODE 1N4148M	(AU, EA, E2, E3, MX, MY, PX, SP, E4)
		< FUSE >	
△F1	1-532-259-00	FUSE, TIME-LAG (T1.6A) (E2, E3, E4, PX, MY, SP)	
△F2	1-532-259-00	FUSE, TIME-LAG (T1.6A) (E2, E3, E4, PX, MY, SP)	
△F801	1-532-203-00	FUSE, TIME-LAG (T2A)	
△F802	1-532-203-00	FUSE, TIME-LAG (T2A)	
		< IC >	
IC201	8-759-000-48	IC MC14052BCP	
IC202	8-759-000-49	IC MC14066BCP	
IC203	8-759-000-49	IC MC14066BCP	
IC204	8-759-636-74	IC M5218AP-22	
IC205	8-759-000-49	IC MC14066BCP	
IC206	8-759-636-74	IC M5218AP-22	

The components identified by mark △ or dotted line with mark △ are critical for safety. Replace only with part number specified.

MAIN (A)

Ref. No.	Part No.	Description	Remark	Ref. No.	Part No.	Description	Remark
IC250	8-759-202-61	IC TC4094BP		R216	1-249-429-11	CARBON 10K 5% 1/4W	
IC702	8-759-111-68	IC uPC1237HA		R217	1-249-435-11	CARBON 33K 5% 1/4W	
IC801	8-759-071-48	IC TA7807S		R218	1-249-432-11	CARBON 18K 5% 1/4W	
IC802	8-759-071-47	IC TA79007S		R251	1-249-417-11	CARBON 1K 5% 1/4W F	
IC851	8-759-729-03	IC NJM2903D (AU, EA, E2, E3, MX, MY, PX, SP, E4)		R252	1-249-417-11	CARBON 1K 5% 1/4W F	
		< JACK >		R253	1-249-413-11	CARBON 470 5% 1/4W F	
* J701	1-569-130-11	JACK, PIN 2P (SURROUND SPEAKER)		R254	1-247-807-31	CARBON 100 5% 1/4W	
		< COIL >		R255	1-249-426-11	CARBON 5.6K 5% 1/4W	
* L701	1-420-872-00	COIL, AIR CORE		R256	1-249-437-11	CARBON 47K 5% 1/4W	
* L751	1-420-872-00	COIL, AIR CORE		R257	1-249-435-11	CARBON 33K 5% 1/4W (AU)	
		< TRANSISTOR >		R257	1-249-437-11	CARBON 47K 5% 1/4W	(EA, E2, E3, MX, MY, PX, SP, E4)
Q250	8-729-900-36	TRANSISTOR DTC124ES		R258	1-249-437-11	CARBON 47K 5% 1/4W	
Q251	8-729-900-36	TRANSISTOR DTC124ES		R259	1-249-425-11	CARBON 4.7K 5% 1/4W F	
Q252	8-729-620-05	TRANSISTOR 2SC2603-EF		R260	1-247-897-11	CARBON 560K 5% 1/4W	
Q253	8-729-900-63	TRANSISTOR DTA124ES		R261	1-249-417-11	CARBON 1K 5% 1/4W F	
Q254	8-729-900-36	TRANSISTOR DTC124ES		R262	1-249-417-11	CARBON 1K 5% 1/4W F	
Q255	8-729-900-36	TRANSISTOR DTC124ES		R263	1-249-417-11	CARBON 1K 5% 1/4W F	
Q256	8-729-900-63	TRANSISTOR DTA124ES		R264	1-249-437-11	CARBON 47K 5% 1/4W	
Q257	8-729-900-63	TRANSISTOR DTA124ES		R265	1-247-897-11	CARBON 560K 5% 1/4W	
Q258	8-729-900-63	TRANSISTOR DTA124ES		R266	1-249-429-11	CARBON 10K 5% 1/4W	
Q259	8-729-900-63	TRANSISTOR DTA124ES		R270	1-249-413-11	CARBON 470 5% 1/4W F	
Q260	8-729-900-36	TRANSISTOR DTC124ES		R271	1-249-413-11	CARBON 470 5% 1/4W F	
Q261	8-729-900-63	TRANSISTOR DTA124ES		R272	1-249-413-11	CARBON 470 5% 1/4W F	
Q701	8-729-140-84	TRANSISTOR 2SC1841-PAFAEA		R273	1-249-429-11	CARBON 10K 5% 1/4W	
Q702	8-729-900-63	TRANSISTOR DTA124ES		R274	1-249-429-11	CARBON 10K 5% 1/4W	
Q751	8-729-140-84	TRANSISTOR 2SC1841-PAFAEA		R275	1-249-425-11	CARBON 4.7K 5% 1/4W F	
Q801	8-729-141-83	TRANSISTOR 2SB1094-LK		R276	1-249-433-11	CARBON 22K 5% 1/4W	
Q851	8-729-140-93	TRANSISTOR 2SB733-34		R277	1-249-433-11	CARBON 22K 5% 1/4W	
		(AU, EA, E2, E3, MX, MY, PX, SP, E4)		R278	1-249-433-11	CARBON 22K 5% 1/4W	
		< RESISTOR >		R279	1-249-413-11	CARBON 470 5% 1/4W F	
R201	1-249-417-11	CARBON 1K 5% 1/4W F		R280	1-249-433-11	CARBON 22K 5% 1/4W	
R202	1-249-417-11	CARBON 1K 5% 1/4W F		R281	1-249-433-11	CARBON 22K 5% 1/4W	
R203	1-249-413-11	CARBON 470 5% 1/4W F		R282	1-249-433-11	CARBON 22K 5% 1/4W	
R204	1-247-807-31	CARBON 100 5% 1/4W		R283	1-249-417-11	CARBON 1K 5% 1/4W F	
R205	1-249-426-11	CARBON 5.6K 5% 1/4W		R707	1-249-417-11	CARBON 1K 5% 1/4W F	
R206	1-249-437-11	CARBON 47K 5% 1/4W		R708	1-249-430-11	CARBON 12K 5% 1/4W	
R207	1-249-435-11	CARBON 33K 5% 1/4W (AU)		R709	1-249-441-11	CARBON 100K 5% 1/4W	
R207	1-249-437-11	CARBON 47K 5% 1/4W		R711	1-247-727-11	CARBON 10 5% 1/2W	
		(EA, E2, E3, MX, MY, PX, SP, E4)		R712	1-247-727-11	CARBON 10 5% 1/2W	
R208	1-249-437-11	CARBON 47K 5% 1/4W		R713	1-249-438-11	CARBON 56K 5% 1/4W	
R209	1-249-425-11	CARBON 4.7K 5% 1/4W F		R714	1-249-429-11	CARBON 10K 5% 1/4W	
R210	1-247-897-11	CARBON 560K 5% 1/4W		R715	1-249-441-11	CARBON 100K 5% 1/4W	
R214	1-249-437-11	CARBON 47K 5% 1/4W		R716	1-249-417-11	CARBON 1K 5% 1/4W F	
R215	1-247-897-11	CARBON 560K 5% 1/4W		R718	1-249-437-11	CARBON 47K 5% 1/4W	
				R719	1-249-430-11	CARBON 12K 5% 1/4W	
				R720	1-216-456-00	METAL OXIDE 820 5% 2W F	(AEP, G, EE, IT, MX, CTS)

MAIN (A)

MAIN (B)

MAIN (C)

MAIN (D)

Ref. No.	Part No.	Description	Remark
R720	1-216-457-00	METAL OXIDE 1.2K 5% 2W F (AU, EA, E2, E3, MY, PX, SP, E4)	
R721	1-249-391-11	CARBON 6.8 5% 1/4W (G, IT)	
R757	1-249-417-11	CARBON 1K 5% 1/4W F	
R758	1-249-430-11	CARBON 12K 5% 1/4W	
R759	1-249-441-11	CARBON 100K 5% 1/4W	
R761	1-247-727-11	CARBON 10 5% 1/2W	
R762	1-247-727-11	CARBON 10 5% 1/2W	
R763	1-249-437-11	CARBON 47K 5% 1/4W	
R771	1-247-727-11	CARBON 10 5% 1/2W (G, IT)	
R801	1-216-481-11	METAL OXIDE 1.2K 5% 3W F	
R802	1-216-481-11	METAL OXIDE 1.2K 5% 3W F	
R805	1-247-761-11	CARBON 5.6K 5% 1/2W	
R806	1-249-421-11	CARBON 2.2K 5% 1/4W F	
R851	1-247-807-31	CARBON 100 5% 1/4W (AU, EA, E2, E3, MX, MY, PX, SP, E4)	
R852	1-249-441-11	CARBON 100K 5% 1/4W (AU, EA, E2, E3, MX, MY, PX, SP, E4)	
R853	1-249-417-11	CARBON 1K 5% 1/4W F (AU, EA, E2, E3, MX, MY, PX, SP, E4)	
R854	1-249-426-11	CARBON 5.6K 5% 1/4W (AU, EA, E2, E3, MX, MY, PX, SP, E4)	
R855	1-249-438-11	CARBON 56K 5% 1/4W (AU, EA, E2, E3, MX, MY, PX, SP, E4)	
R856	1-249-417-11	CARBON 1K 5% 1/4W F (AU, EA, E2, E3, MX, MY, PX, SP, E4)	
R857	1-249-417-11	CARBON 1K 5% 1/4W F (AU, EA, E2, E3, MX, MY, PX, SP, E4)	
R858	1-249-417-11	CARBON 1K 5% 1/4W F (AU, EA, E2, E3, MX, MY, PX, SP, E4)	
R859	1-249-417-11	CARBON 1K 5% 1/4W F (AU, EA, E2, E3, MX, MY, PX, SP, E4)	
R860	1-247-730-11	CARBON 18 5% 1/2W (AU, EA, E2, E3, MX, MY, PX, SP, E4)	
R861	1-249-389-11	CARBON 4.7 5% 1/4W F (AU, EA, E2, E3, MX, MY, PX, SP, E4)	
< RELAY >			
RY701	1-515-765-11	RELAY	
< SWITCH >			
△S1	1-554-920-51	SWITCH, PUSH (AC POWER) (1 KEY) (POWER)	
< TERMINAL >			
TM701	1-537-240-11	TERMINAL BOARD (CHECKER PIN)	

Ref. No.	Part No.	Description	Remark
MAIN BOARD (B) *****			
< CAPACITOR >			
C805	1-124-887-00	ELECT 3300uF 20% 16V	
C806	1-124-887-00	ELECT 3300uF 20% 16V	
C811	1-136-173-00	FILM 0.47uF 5% 50V	
C812	1-136-173-00	FILM 0.47uF 5% 50V	
C813	1-136-161-00	FILM 0.047uF 5% 50V	
C814	1-136-161-00	FILM 0.047uF 5% 50V	
C817	1-126-162-11	ELECT 3.3uF 20% 50V	
C822	1-124-920-11	ELECT 330uF 20% 63V	
< DIODE >			
D801	8-719-302-38	DIODE RBV-602-01	
D806	8-719-200-77	DIODE 10E2N	
D807	8-719-200-77	DIODE 10E2N	
D808	8-719-200-77	DIODE 10E2N	
D809	8-719-200-77	DIODE 10E2N	
D811	8-719-987-63	DIODE 1N4148M	
D812	8-719-987-63	DIODE 1N4148M	
D821	8-719-200-77	DIODE 10E2N	
< IC LINK >			
△ICP801	1-532-843-21	LINK, IC	
△ICP802	1-532-843-21	LINK, IC	
< RESISTOR >			
R803	1-249-428-11	CARBON 8.2K 5% 1/4W F	
R804	1-249-428-11	CARBON 8.2K 5% 1/4W F	
△R807	1-212-934-00	FUSIBLE 1 5% 1/2W F	
MAIN BOARD (C) *****			
MAIN BOARD (D) *****			
< CAPACITOR >			
C706	1-124-572-11	ELECT 100uF 20% 63V	
C707	1-124-572-11	ELECT 100uF 20% 63V	
< CONNECTOR >			
* CN704	1-569-504-11	PIN, CONNECTOR 9P (AEP, G, EE, IT, CIS)	
* CN704	1-569-507-11	PIN, CONNECTOR 12P (AU, EA, E2, E3, MX, MY, PX, SP, E4)	

The components identified by mark △ or dotted line with mark △ are critical for safety. Replace only with part number specified.

MAIN (D)**MIC (A)****MIC (B)****PANEL (A)**

Ref. No.	Part No.	Description	Remark
< RESISTOR >			
△R705	1-212-881-11	FUSIBLE 100 5% 1/4W F	
△R706	1-212-881-11	FUSIBLE 100 5% 1/4W F	
R710	1-217-156-00	RES, METAL PLATE 0.22	
R760	1-217-156-00	RES, METAL PLATE 0.22	

*	1-651-413-11	MIC BOARD (AU, EA, E2, E3, MX, MY, PX, SP, E4)	

MIC BOARD (A)			

< CAPACITOR >			
C421	1-162-294-31	CERAMIC 0.001uF 10% 50V	
C422	1-126-161-11	ELECT 2.2uF 5% 50V	
C423	1-162-219-31	CERAMIC 68PF 5% 50V	
C424	1-162-286-31	CERAMIC 220PF 10% 50V	
C425	1-126-163-11	ELECT 4.7uF 20% 50V	
C426	1-126-163-11	ELECT 4.7uF 20% 50V	
C427	1-162-286-31	CERAMIC 220PF 10% 50V	
C428	1-124-464-11	ELECT 0.22uF 20% 50V	
C429	1-104-792-51	ELECT 33uF 20% 16V	
C430	1-104-792-51	ELECT 33uF 20% 16V	
C431	1-164-159-11	CERAMIC 0.1uF 50V	
< IC >			
IC421	8-759-184-02	IC NJM2068L-D	
< JACK >			
J401	1-507-854-00	JACK, PHONE (MIC)	
< RESISTOR >			
R421	1-249-441-11	CARBON 100K 5% 1/4W	
R422	1-249-429-11	CARBON 10K 5% 1/4W	
R423	1-249-423-11	CARBON 3.3K 5% 1/4W F	
R424	1-249-440-11	CARBON 82K 5% 1/4W	
R425	1-249-429-11	CARBON 10K 5% 1/4W	
R426	1-249-427-11	CARBON 6.8K 5% 1/4W F	
R427	1-249-440-11	CARBON 82K 5% 1/4W	
R428	1-249-409-11	CARBON 220 5% 1/4W F	
R429	1-249-429-11	CARBON 10K 5% 1/4W	
R430	1-247-807-31	CARBON 100 5% 1/4W	
R432	1-247-807-31	CARBON 100 5% 1/4W	
R434	1-247-417-11	CARBON 1K 5% 1/4W	
R443	1-247-417-11	CARBON 1K 5% 1/4W	

Ref. No.	Part No.	Description	Remark
< VARIABLE RESISTOR >			
RV421	1-223-334-11	RES, VAR, CARBON 50K (MIC LEVEL)	
MIC BOARD (B)			

< CONNECTOR >			
* CN401	1-569-500-11	PIN, CONNECTOR 5P	

*	A-4369-456-A	PANEL BOARD, COMPLETE (AEP, G, EE, IT, CIS)	

*	A-4369-467-A	PANEL BOARD, COMPLETE (AU, EA, E2, E3, MX, MY, PX, SP, E4)	

*	4-921-941-21	CUSHION (FL)	
*	4-923-103-01	HOLDER, FL TUBE	
PANEL BOARD (A)			

< CAPACITOR >			
C605	1-126-300-11	ELECT 0.47uF 20% 50V	
C606	1-124-250-00	ELECT 0.15uF 20% 50V	
C607	1-126-301-11	ELECT 1uF 20% 50V	
C611	1-164-159-11	CERAMIC 0.1uF 50V	
C612	1-164-159-11	CERAMIC 0.1uF 50V	
C655	1-124-465-00	ELECT 0.47uF 20% 50V	
C656	1-124-250-00	ELECT 0.15uF 20% 50V	
C657	1-126-301-11	ELECT 1uF 20% 50V	
C901	1-126-059-11	ELECT 10uF 20% 50V	
C902	1-125-486-11	DOUBLE LAYERS 0.22F 5.5V	
C903	1-126-049-11	ELECT 22uF 20% 25V	
C906	1-161-379-00	CERAMIC 0.01uF 20% 25V	
C909	1-161-494-00	CERAMIC 0.022uF 25V	
C911	1-164-159-11	CERAMIC 0.1uF 50V	
C912	1-164-159-11	CERAMIC 0.1uF 50V	
C921	1-162-294-31	CERAMIC 0.001uF 10% 50V	
C922	1-161-494-00	CERAMIC 0.022uF 25V	
C923	1-126-059-11	ELECT 10uF 20% 50V	
C924	1-161-494-00	CERAMIC 0.022uF 25V	
C925	1-126-059-11	ELECT 10uF 20% 50V	
C941	1-162-290-31	CERAMIC 470PF 10% 50V	
C942	1-162-290-31	CERAMIC 470PF 10% 50V	
C943	1-162-290-31	CERAMIC 470PF 10% 50V	
C944	1-162-290-31	CERAMIC 470PF 10% 50V	

The components identified by mark △ or dotted line with mark △ are critical for safety. Replace only with part number specified.

PANEL (A)

Ref. No.	Part No.	Description	Remark
C945	1-162-290-31	CERAMIC 470PF 10% 50V	
C946	1-162-290-31	CERAMIC 470PF 10% 50V	
C947	1-162-290-31	CERAMIC 470PF 10% 50V	
C949	1-162-290-31	CERAMIC 470PF 10% 50V	
< COMPOSITION CIRCUIT BLOCK >			
CP901	1-232-998-11	COMPOSITION CIRCUIT BLOCK	
CP902	1-232-998-11	COMPOSITION CIRCUIT BLOCK	
CP903	1-232-998-11	COMPOSITION CIRCUIT BLOCK	
CP904	1-232-998-11	COMPOSITION CIRCUIT BLOCK	
< DIODE >			
D601	8-719-987-63	DIODE 1N4148M	
D651	8-719-987-63	DIODE 1N4148M	
D911	8-719-301-37	LED SEL2210S-CD (AU, EA, E2, E3, MX, MY, PX, SP, E4)	
D912	8-719-301-37	LED SEL2210S-CD	
D913	8-719-301-39	LED SEL2210S	
D914	8-719-301-39	LED SEL2210S	
D915	8-719-301-39	LED SEL2210S	
D916	8-719-301-39	LED SEL2210S	
D917	8-719-301-39	LED SEL2210S	
D918	8-719-301-37	LED SEL2210S-CD	
D919	8-719-301-37	LED SEL2210S-CD	
D920	8-719-301-37	LED SEL2210S-CD	
D921	8-719-301-37	LED SEL2210S-CD	
D922	8-719-301-39	LED SEL2210S	
D923	8-719-301-39	LED SEL2210S	
D924	8-719-301-39	LED SEL2210S	
D928	8-719-815-85	DIODE 1S1585	
D929	8-719-000-60	DIODE UZL-6M2	
D930	8-719-987-63	DIODE 1N4148M	
D931	8-719-987-63	DIODE 1N4148M	
D932	8-719-987-63	DIODE 1N4148M	
D933	8-719-987-63	DIODE 1N4148M	
D934	8-719-987-63	DIODE 1N4148M	
D935	8-719-987-63	DIODE 1N4148M	
D936	8-719-987-63	DIODE 1N4148M	
D941	8-719-301-39	LED SEL2210S	
D942	8-719-301-39	LED SEL2210S	
D943	8-719-301-39	LED SEL2210S	
D944	8-719-301-39	LED SEL2210S	
D945	8-719-301-39	LED SEL2210S	
D946	8-719-301-37	LED SEL2210S-CD	
D947	8-719-301-39	LED SEL2210S	
D948	8-719-301-39	LED SEL2210S	
D949	8-719-301-37	LED SEL2210S-CD	
D950	8-719-987-63	DIODE 1N4148M	
D951	8-719-987-63	DIODE 1N4148M	

Ref. No.	Part No.	Description	Remark
D952	8-719-987-63	DIODE 1N4148M	
D953	8-719-987-63	DIODE 1N4148M	
D954	8-719-987-63	DIODE 1N4148M	
D955	8-719-987-63	DIODE 1N4148M	
D956	8-719-987-63	DIODE 1N4148M	
D957	8-719-987-63	DIODE 1N4148M	
D958	8-719-987-63	DIODE 1N4148M	
D959	8-719-987-63	DIODE 1N4148M	
D960	8-719-987-63	DIODE 1N4148M	
D961	8-719-987-63	DIODE 1N4148M	
< FILTER >			
FL901	1-517-266-21	INDICATOR TUBE, FLUORESCENT	
< IC >			
IC901	8-759-256-75	IC uPD78042GF-057-3B9	
IC903	8-759-991-11	IC XR1091DCP	
< COIL >			
L921	1-408-121-00	INDUCTOR 22uH	
L922	1-408-121-00	INDUCTOR 22uH	
< TRANSISTOR >			
Q601	8-729-224-62	TRANSISTOR 2SK246-GR	
Q602	8-729-620-05	TRANSISTOR 2SC2603-EF	
Q603	8-729-900-36	TRANSISTOR DTC124ES	
Q604	8-729-900-63	TRANSISTOR DTA124ES	
Q651	8-729-224-62	TRANSISTOR 2SK246-GR	
Q652	8-729-620-05	TRANSISTOR 2SC2603-EF	
Q912	8-729-900-36	TRANSISTOR DTC124ES	
Q913	8-729-900-36	TRANSISTOR DTC124ES (AU, EA, E2, E3, MX, MY, PX, SP, E4)	
Q914	8-729-900-36	TRANSISTOR DTC124ES	
Q915	8-729-900-36	TRANSISTOR DTC124ES	
Q916	8-729-900-36	TRANSISTOR DTC124ES	
Q917	8-729-900-36	TRANSISTOR DTC124ES	
Q941	8-729-900-36	TRANSISTOR DTC124ES	
Q942	8-729-620-05	TRANSISTOR 2SC2603-EF	
Q944	8-729-620-05	TRANSISTOR 2SC2603-EF	
Q945	8-729-900-36	TRANSISTOR DTC124ES	
Q946	8-729-620-05	TRANSISTOR 2SC2603-EF	
Q948	8-729-620-05	TRANSISTOR 2SC2603-EF	
Q949	8-729-620-05	TRANSISTOR 2SC2603-EF	
< RESISTOR >			
R603	1-247-903-00	CARBON 1M 5% 1/4W	
R604	1-249-420-11	CARBON 1.8K 5% 1/4W F	
R605	1-249-434-11	CARBON 27K 5% 1/4W	

PANEL (A)

PANEL (B)

Ref. No.	Part No.	Description	Remark
R606	1-247-881-00	CARBON 120K 5%	1/4W
R607	1-249-412-11	CARBON 390 5%	1/4W F
R608	1-249-427-11	CARBON 6.8K 5%	1/4W F
R612	1-249-441-11	CARBON 100K 5%	1/4W
R613	1-249-435-11	CARBON 33K 5%	1/4W
R614	1-249-425-11	CARBON 4.7K 5%	1/4W F
R624	1-249-435-11	CARBON 33K 5%	1/4W
R625	1-249-426-11	CARBON 5.6K 5%	1/4W
R653	1-247-903-00	CARBON 1M 5%	1/4W
R654	1-249-420-11	CARBON 1.8K 5%	1/4W F
R655	1-249-434-11	CARBON 27K 5%	1/4W
R656	1-247-881-00	CARBON 120K 5%	1/4W
R657	1-249-412-11	CARBON 390 5%	1/4W F
R658	1-249-427-11	CARBON 6.8K 5%	1/4W F
R674	1-249-435-11	CARBON 33K 5%	1/4W
R675	1-249-426-11	CARBON 5.6K 5%	1/4W
R901	1-249-429-11	CARBON 10K 5%	1/4W
R912	1-249-413-11	CARBON 470 5%	1/4W F
R913	1-249-413-11	CARBON 470 5%	1/4W F
R918	1-249-413-11	CARBON 470 5%	1/4W F
R919	1-249-441-11	CARBON 100K 5%	1/4W
R921	1-249-441-11	CARBON 100K 5%	1/4W
R924	1-249-441-11	CARBON 100K 5%	1/4W
R926	1-249-441-11	CARBON 100K 5%	1/4W
R927	1-249-441-11	CARBON 100K 5%	1/4W
R928	1-249-429-11	CARBON 10K 5%	1/4W
R929	1-249-429-11	CARBON 10K 5%	1/4W
R930	1-249-429-11	CARBON 10K 5%	1/4W
R931	1-249-437-11	CARBON 47K 5%	1/4W
R932	1-249-437-11	CARBON 47K 5%	1/4W
R933	1-249-437-11	CARBON 47K 5%	1/4W
R934	1-249-437-11	CARBON 47K 5%	1/4W
R935	1-249-409-11	CARBON 220 5%	1/4W F(Suffix-11)
R935	1-249-413-11	CARBON 470 5%	1/4W F(Suffix-12)
R936	1-249-409-11	CARBON 220 5%	1/4W F(Suffix-11)
R936	1-249-413-11	CARBON 470 5%	1/4W F(Suffix-12)
R937	1-249-437-11	CARBON 47K 5%	1/4W
R938	1-249-433-11	CARBON 22K 5%	1/4W
R941	1-249-417-11	CARBON 1K 5%	1/4W F
R942	1-249-396-11	CARBON 18 5%	1/6W F
R944	1-249-396-11	CARBON 18 5%	1/6W F
R945	1-249-396-11	CARBON 18 5%	1/6W F
R946	1-249-396-11	CARBON 18 5%	1/6W F
R947	1-249-417-11	CARBON 1K 5%	1/4W F
R948	1-249-396-11	CARBON 18 5%	1/6W F
R949	1-249-396-11	CARBON 18 5%	1/6W F
R952	1-249-393-11	CARBON 10 5%	1/4W F
R953	1-249-419-11	CARBON 1.5K 5%	1/4W F

Ref. No.	Part No.	Description	Remark
R955	1-249-429-11	CARBON 10K 5%	1/4W
R957	1-249-417-11	CARBON 1K 5%	1/4W F
R959	1-249-413-11	CARBON 470 5%	1/4W F
R962	1-249-429-11	CARBON 10K 5%	1/4W
< VARIABLE RESISTOR >			
RV601	1-238-977-11	RES, VAR, CARBON 100K/100K	(LEVEL)
RV602	1-238-977-11	RES, VAR, CARBON 100K/100K	(FREQ(HZ))
RV604	1-223-669-11	RES, VAR, CARBON 100K	(BALANCE)
< SWITCH >			
S901	1-554-303-21	SWITCH, TACTILE	(DISPLAY)
S902	1-554-303-21	SWITCH, TACTILE	(CURSOR CONTROL (UP))
S903	1-554-303-21	SWITCH, TACTILE	(MEMORY)
S904	1-554-303-21	SWITCH, TACTILE	(LEVEL (SURROUND))
S905	1-554-303-21	SWITCH, TACTILE	(MODE/OFF (SURROUND))
S906	1-554-303-21	SWITCH, TACTILE	(ON/OFF)
S907	1-554-303-21	SWITCH, TACTILE	(KARAOKE PON) (AU, EA, E2, E3, MX, MY, PX, SP, E4)
S908	1-554-303-21	SWITCH, TACTILE	(CURSOR CONTROL (RIGHT))
S909	1-554-303-21	SWITCH, TACTILE	(CURSOR CONTROL (LEFT))
S910	1-554-303-21	SWITCH, TACTILE	(PERSONAL FILE (CURSOR MODE))
S911	1-554-303-21	SWITCH, TACTILE	(SELECT 5 (CURSOR MODE))
S912	1-554-303-21	SWITCH, TACTILE	(EQ (CURSOR MODE))
S913	1-554-303-21	SWITCH, TACTILE	(EQ FLAT)
S914	1-554-303-21	SWITCH, TACTILE	(SOURCE DIRECT)
S915	1-554-303-21	SWITCH, TACTILE	(PHONO)
S916	1-554-303-21	SWITCH, TACTILE	(CURSOR CONTROL (DOWN))
S917	1-554-303-21	SWITCH, TACTILE	(TUNER)
S918	1-554-303-21	SWITCH, TACTILE	(CD)
S919	1-554-303-21	SWITCH, TACTILE	(TAPE)
S920	1-554-303-21	SWITCH, TACTILE	(VIDEO/MD)
S921	1-554-303-21	SWITCH, TACTILE	(P FUNCTION)
< VIBRATOR >			
X901	1-577-101-11	VIBRATOR, CERAMIC	(4.19MHz)
PANEL BOARD (B) *****			
< CAPACITOR >			
C628	1-164-159-11	CERAMIC 0.1uF	50V
C935	1-124-994-11	ELECT 100uF	20% 10V
< CONNECTOR >			
* CN606	1-568-450-11	HOUSING, CONNECTOR(PC BOARD)	4P

PANEL (B)

PANEL (C)

PANEL (D)

PANEL (E)

Ref. No.	Part No.	Description	Remark
< DIODE >			
D971	8-719-010-32	DIODE UZ-4.7BSA	
D972	8-719-200-82	DIODE 11ES2	
D973	8-719-200-82	DIODE 11ES2	
< IC >			
IC904	8-759-820-62	IC LB1639	
< TRANSISTOR >			
Q925	8-729-900-36	TRANSISTOR DTC124ES	
< RESISTOR >			
R925	1-249-415-11	CARBON 680 5% 1/4W F	
R974	1-249-397-11	CARBON 22 5% 1/4W F	
R975	1-249-433-11	CARBON 22K 5% 1/4W	
R976	1-249-433-11	CARBON 22K 5% 1/4W	
R977	1-249-425-11	CARBON 4.7K 5% 1/4W F	
R978	1-249-425-11	CARBON 4.7K 5% 1/4W F	
< VARIABLE RESISTOR >			
RV603	1-223-690-11	RES, VAR, CARBON 10K/100K/100K (VOLUME)	
PANEL BOARD (C) *****			
< CONNECTOR >			
* CN607	1-568-453-11	PIN, CONNECTOR (PC BOARD) 4P	
PANEL BOARD (D) *****			
PANEL BOARD (E) *****			
< CAPACITOR >			
C601	1-126-161-11	ELECT 2.2uF 20% 50V	
C602	1-162-282-31	CERAMIC 100PF 10% 50V	
C603	1-162-282-31	CERAMIC 100PF 10% 50V	
C604	1-126-161-11	ELECT 2.2uF 20% 50V	
C608	1-126-059-11	ELECT 10uF 20% 50V	
C609	1-126-059-11	ELECT 10uF 20% 50V	
C627	1-126-300-11	ELECT 0.47uF 20% 50V	
C651	1-126-161-11	ELECT 2.2uF 20% 50V	

Ref. No.	Part No.	Description	Remark
C652	1-162-282-31	CERAMIC 100PF 10% 50V	
C653	1-162-282-31	CERAMIC 100PF 10% 50V	
C654	1-126-161-11	ELECT 2.2uF 20% 50V	
C677	1-126-300-11	ELECT 0.47uF 20% 50V	
C904	1-164-159-11	CERAMIC 0.1uF 50V	
C905	1-161-379-00	CERAMIC 0.01uF 20% 25V	
C907	1-136-159-00	FILM 0.033uF 5% 50V	
C908	1-164-159-11	CERAMIC 0.1uF 50V	
C950	1-161-494-00	CERAMIC 0.022uF 25V	
< CONNECTOR >			
CN901	1-568-802-11	SOCKET, CONNECTOR 19P	
< DIODE >			
D901	8-719-000-81	DIODE UZL-7L3	
D902	8-719-987-63	DIODE 1N4148M	
D903	8-719-200-82	DIODE 11ES2	
D904	8-719-200-82	DIODE 11ES2	
D905	8-719-987-63	DIODE 1N4148M	
D907	8-719-987-63	DIODE 1N4148M	
D908	8-719-987-63	DIODE 1N4148M	
D909	8-719-987-63	DIODE 1N4148M	
D910	8-719-200-82	DIODE 11ES2	
D980	8-719-200-82	DIODE 11ES2	
D981	8-719-987-63	DIODE 1N4148M	
< IC >			
IC601	8-759-636-74	IC M5218AP-22	
IC902	8-759-635-63	IC M51943BSL	
< TRANSISTOR >			
Q605	8-729-900-63	TRANSISTOR DTA124ES	
Q621	8-729-141-26	TRANSISTOR 2SC3622A-LK	
Q671	8-729-141-26	TRANSISTOR 2SC3622A-LK	
Q901	8-729-620-05	TRANSISTOR 2SC2603-EF	
Q902	8-729-620-05	TRANSISTOR 2SC2603-EF	
< RESISTOR >			
R601	1-249-441-11	CARBON 100K 5% 1/4W	
R602	1-249-428-11	CARBON 8.2K 5% 1/4W F	
R620	1-249-425-11	CARBON 4.7K 5% 1/4W F	
R621	1-249-417-11	CARBON 1K 5% 1/4W F	
R622	1-249-425-11	CARBON 4.7K 5% 1/4W F	
R623	1-249-441-11	CARBON 100K 5% 1/4W	
R626	1-249-417-11	CARBON 1K 5% 1/4W F	
R651	1-249-441-11	CARBON 100K 5% 1/4W	
R652	1-249-428-11	CARBON 8.2K 5% 1/4W F	
R670	1-249-425-11	CARBON 4.7K 5% 1/4W F	

PANEL (E)

STK (A)

STK (B)

TS

VS

Ref. No.	Part No.	Description	Remark
R671	1-249-417-11	CARBON 1K 5% 1/4W F	
R676	1-249-417-11	CARBON 1K 5% 1/4W F	
R902	1-249-425-11	CARBON 4.7K 5% 1/4W F	
R903	1-249-429-11	CARBON 10K 5% 1/4W	
R904	1-249-417-11	CARBON 1K 5% 1/4W F	
R905	1-249-423-11	CARBON 3.3K 5% 1/4W F	
R907	1-249-429-11	CARBON 10K 5% 1/4W	
R943	1-249-417-11	CARBON 1K 5% 1/4W F	
R958	1-249-429-11	CARBON 10K 5% 1/4W	

* A-4369-455-A STK BOARD, COMPLETE (AEP, EE, CIS)

* A-4369-462-A STK BOARD, COMPLETE (G, IT)

* A-4369-465-A STK BOARD, COMPLETE (AU, EA, E2, E3, MY, PX, SP, E4)

* A-4371-374-A STK BOARD, COMPLETE (MX)

STK BOARD (A)

< CAPACITOR >

C701	1-126-161-11	ELECT 2.2uF 20% 50V	
C702	1-162-282-31	CERAMIC 100PF 10% 50V	
C703	1-162-286-31	CERAMIC 220PF 10% 50V	
C704	1-124-994-11	ELECT 100uF 20% 10V	
C726	1-161-494-00	CERAMIC 0.022uF 25V (G, IT)	
C751	1-126-161-11	ELECT 2.2uF 20% 50V	
C752	1-162-282-31	CERAMIC 100PF 10% 50V	
C753	1-162-286-31	CERAMIC 220PF 10% 50V	
C754	1-124-994-11	ELECT 100uF 20% 10V	

< CONNECTOR >

- * CN702 1-564-518-11 PLUG, CONNECTOR 3P
- * CN703 1-569-495-11 SOCKET, CONNECTOR 9P (AEP, G, EE, IT, CIS)
- * CN703 1-569-498-11 SOCKET, CONNECTOR 12P (AU, EA, E2, E3, MX, MY, PX, SP, E4)

< IC >

- IC701 8-749-922-94 IC STK-401-080 (AEP, G, EE, IT, MX, CIS)
- IC701 8-749-922-95 IC STK-401-090 (AU, EA, E2, E3, MY, PX, SP, E4)

< RESISTOR >

R701	1-249-417-11	CARBON 1K 5% 1/4W F	
R702	1-249-438-11	CARBON 56K 5% 1/4W	

Ref. No.	Part No.	Description	Remark
R703	1-249-414-11	CARBON 560 5% 1/4W F	
R704	1-249-438-11	CARBON 56K 5% 1/4W	
R751	1-249-417-11	CARBON 1K 5% 1/4W F	
R752	1-249-438-11	CARBON 56K 5% 1/4W	
R753	1-249-414-11	CARBON 560 5% 1/4W F	
R754	1-249-438-11	CARBON 56K 5% 1/4W	

STK BOARD (B)

< CAPACITOR >

- C858 1-161-379-00 CERAMIC 0.01uF 20% 25V (AU, EA, E2, E3, MX, MY, PX, SP, E4)

< IC >

- IC852 8-759-947-34 IC LM35DZ (AU, EA, E2, E3, MX, MY, PX, SP, E4)

< RESISTOR >

- R862 1-247-807-31 CARBON 100 5% 1/4W (AU, EA, E2, E3, MX, MY, PX, SP, E4)

* 1-652-079-11 TS BOARD (AU)

* 1-651-410-11 VS BOARD (EA, E2, E3, MY, PX, SP, E4)

< CONNECTOR >

- * CN3 1-573-565-11 PIN, CONNECTOR 5P

< VOLTAGE SELECTOR >

- △VS1 1-572-009-11 SELECTOR, VOLTAGE (VOLTAGE SELECTOR)

MISCELLANEOUS

- 7 1-765-151-11 WIRE (FLAT TYPE) (19 CORE)
- △61 1-751-355-11 CORD, POWER (AU)
- △62 1-575-654-11 CORD, POWER (AEP, G, EA, EE, IT, MY, SP, CIS)
- △63 1-575-656-11 CORD, POWER (E2, E3, E4, MX, PX)
- M851 X-4942-029-1 CASE ASSY, FAN (AU, EA, E2, E3, MX, MY, PX, SP, E4)
- △T1 1-423-529-11 TRANSFORMER, POWER (AEP, G, EE, IT, CIS)
- △T1 1-423-530-11 TRANSFORMER, POWER (AU, EA, E2, E3, MY, PX, SP, E4)

The components identified by mark △ or dotted line with mark △ are critical for safety. Replace only with part number specified.

Ref. No.	Part No.	Description	Remark
----------	----------	-------------	--------

△T1	1-426-781-11	TRANSFORMER, POWER (MX)	
-----	--------------	-------------------------	--

ACCESSORIES & PACKING MATERIALS

*	4-965-421-01	CUSHION	
---	--------------	---------	--

HARDWARE LIST

- | | | |
|----|--------------|---------------------------|
| #1 | 7-621-849-00 | SCREW (BV/RING) |
| #2 | 7-682-547-09 | SCREW +BVTT 3X6 (S) |
| #3 | 7-682-560-04 | SCREW +BVTT 4X6 (S) |
| #4 | 7-685-645-79 | SCREW +BVTP 3X6 TYPE2 |
| #5 | 7-685-646-79 | SCREW +BVTP 3X8 TYPE2 N-S |
| #6 | 7-685-650-79 | SCREW +BVTP 3X16 TYPE2 |

The components identified by mark △ or dotted line with mark △ are critical for safety. Replace only with part number specified.