

# TA-F245R

## SERVICE MANUAL

*AEP Model*  
*UK Model*  
*E Model*  
*Australian Model*

- This set is almost the same as model TA-F235R previously produced. Therefore, see the service manual for the information which is not contained in this service manual.

<u>Page</u>	<u>Ref. No.</u>	<u>Part No.</u>	<u>Description</u>
18	1	4-966-633-01	PANEL, FRONT
	7	X-4944-924-1	BASE ASSY, PANEL
	8	X-4945-054-1	KNOB (R48) ASSY
	*12	A-4369-784-A	DISPLAY BOARD, COMPLETE (AEP, UK, E, AUSTRALIAN)
	*12	A-4369-804-A	DISPLAY BOARD, COMPLETE (G)
19	*52	A-4369-788-A	MAIN BOARD, COMPLETE (AE1, UK, E, AUSTRALIAN)
	*52	A-4369-800-A	MAIN BOARD, COMPLETE (AE2)
	*52	A-4369-806-A	MAIN BOARD, COMPLETE (G)
	*57	4-966-218-01	PANEL, BACK (AE1)
	*57	4-966-218-11	PANEL, BACK (AE2)
	*57	4-966-218-21	PANEL, BACK (G)
	*57	4-966-218-31	PANEL, BACK (UK)
	*57	4-966-218-41	PANEL, BACK (E)
	*57	4-966-218-51	PANEL, BACK (AUSTRALIAN)
22	C512	—————	(JW1512)
	C612	—————	(JW1602)
26		3-758-871-11	MANUAL, INSTRUCTION (English, French, Spanish, Portuguese, Italian) (AEP, UK, E, AUSTRALIAN)
		3-758-871-41	MANUAL, INSTRUCTION (German, Dutch, Swedish, Danish, Finnish) (AEP)
		3-758-871-51	MANUAL, INSTRUCTION (German) (G)
		3-758-871-61	MANUAL, INSTRUCTION (Polish, Russian) (AE2)
		3-758-871-71	MANUAL, INSTRUCTION (Czech, Hungarian) (AE2)
		*4-931-988-91	INDIVIDUAL CARTON

NOTE:

- Items marked "\*" are not stocked since they are seldom required for routine service. Some delay should be anticipated when ordering these items.

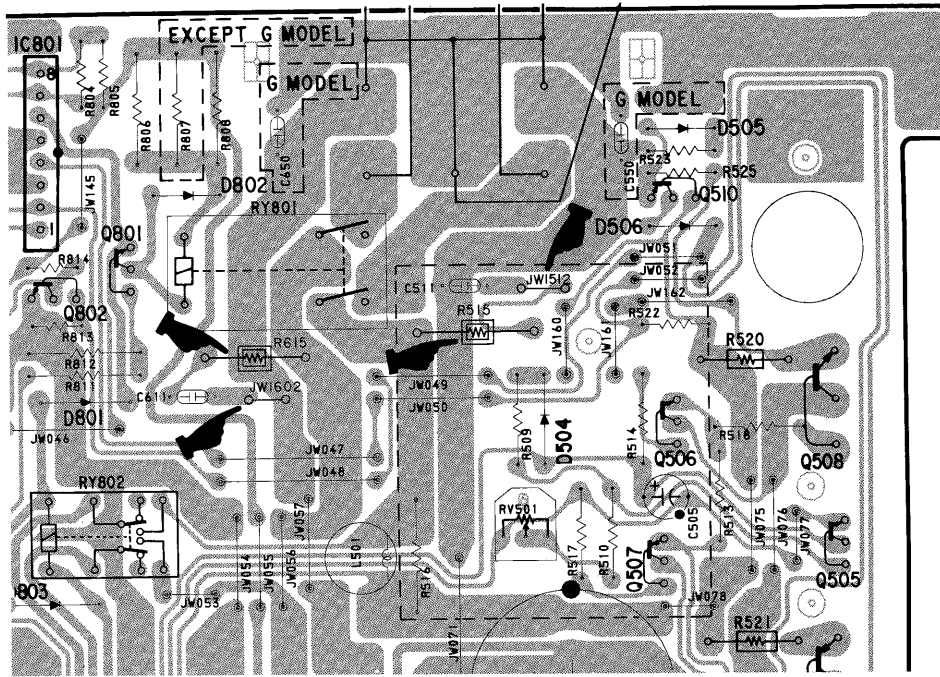
**INTEGRATED STEREO AMPLIFIER**  
**SONY®**

 : difference portion

● PRINTED WIRING BOARD

Page 10

(Location C-7 to C-9)



● SCHEMATIC DIAGRAM

Page 15

(Location E-18 to F-18)

