

TA-FE200

SERVICE MANUAL

AEP Model
UK Model



SPECIFICATIONS

Amplifier section

DIN power output

40 W+40 W (8 ohms at 1 kHz)

Frequency response

PHONO (20 Hz-20 kHz): RIAA equalization curve \pm 0.5 dB

TUNER, CD, TAPE1/DAT, TAPE2/MD : 7 Hz-70 kHz \pm 3 dB

S/N (network A)

PHONO: 80 dB

TUNER, CD, TAPE1/DAT, TAPE2/MD : 105dB

Output voltage/impedance

REC OUT: 200 mV, 1 kilohm

PHONES: 5 mW (at 8 ohms)

Speakers impedance

8-16 ohms

General

System

Power amplifier: Pure-complementary SEPP
OCL power amplifier with all stages directly coupled

Preamplifier: Low-noise, equalizer amplifier

Power requirements

220-230 V AC, 50/60 Hz

Power consumption

120 W

Dimensions (approx.) (w/h/d)

430×105×290 mm

incl. projecting parts and controls

Mass (approx.)

4.2 kg

Design and specifications are subject to change without notice.



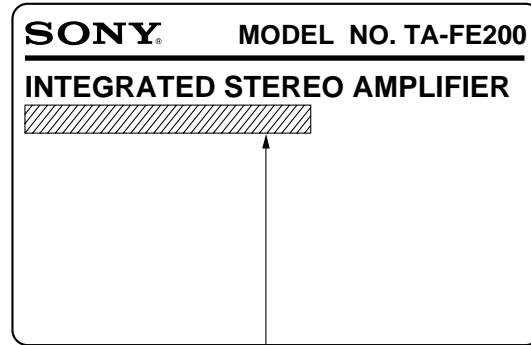
INTEGRATED STEREO AMPLIFIER
SONY[®]

TABLE OF CONTENTS

1. GENERAL	3
2. DIAGRAMS	
2-1. Schematic Diagram	6
2-2. Printed Wiring Boards	9
3. EXPLODED VIEWS	13
4. ELECTRICAL PARTS LIST	15

MODEL IDENTIFICATION

– Specification Label Printed on Back Panel –



AEP, German model:

AC: 220 – 230 V ~ 50/60 Hz

UK model:

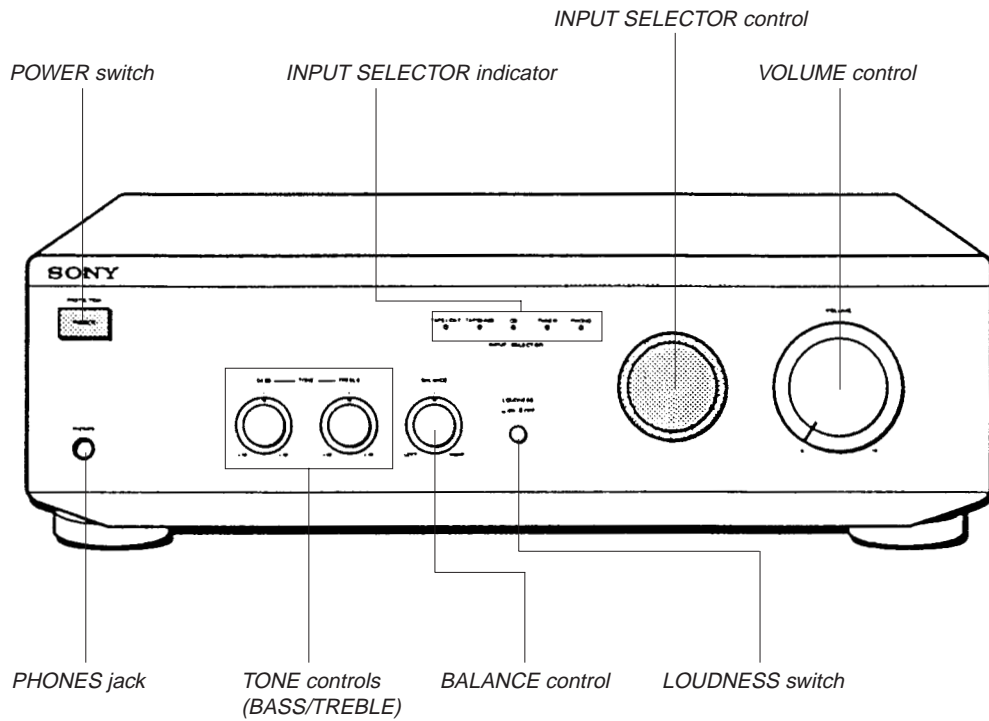
AC: 220 – 230 V ~ 50 Hz

SAFETY-RELATED COMPONENT WARNING!!

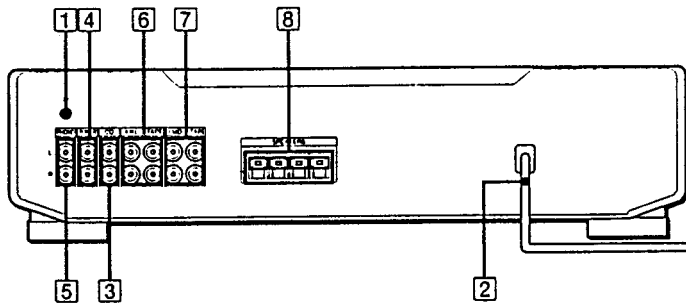
COMPONENTS IDENTIFIED BY MARK \triangle OR DOTTED LINE WITH MARK \triangle ON THE SCHEMATIC DIAGRAMS AND IN THE PARTS LIST ARE CRITICAL TO SAFE OPERATION. REPLACE THESE COMPONENTS WITH SONY PARTS WHOSE PART NUMBERS APPEAR AS SHOWN IN THIS MANUAL OR IN SUPPLEMENTS PUBLISHED BY SONY.

SECTION 1 GENERAL

- **Location of Controls**
Front Panel Descriptions



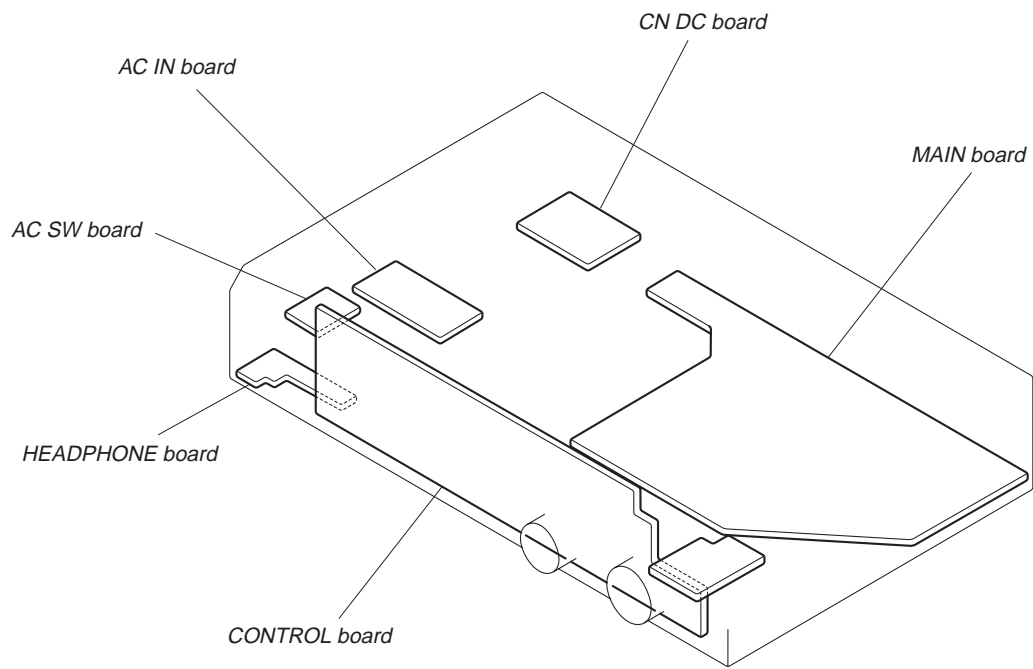
Rear Panel Descriptions



- 1 \hbar (earth)
- 2 Mains lead
- 3 CD
- 4 TUNER
- 5 PHONO
- 6 TAPE2/MD
- 7 TAPE1/DAT
- 8 SPEAKERS

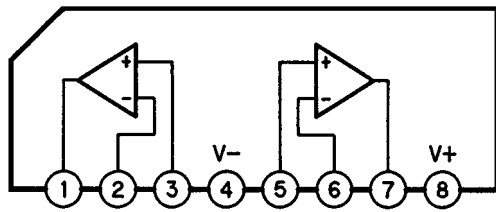
SECTION 2 DIAGRAMS

• Circuit Boards Location

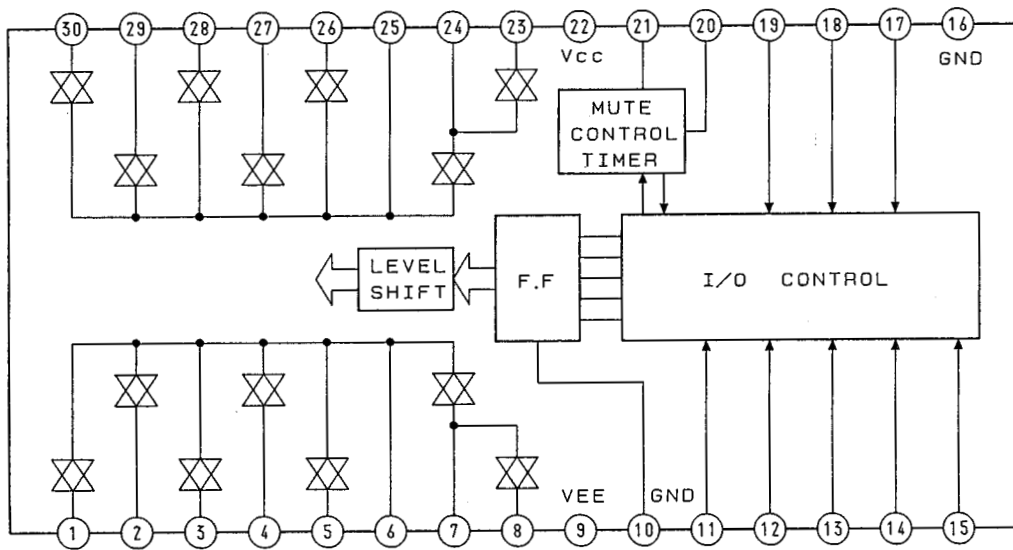


• IC Block Diagrams

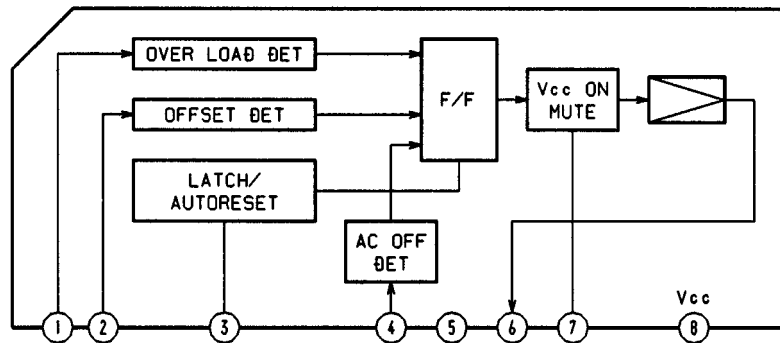
IC101 NJM2068L-D



IC103 LC7818



IC601 μ PC1237HA



SECTION 3 EXPLODED VIEWS

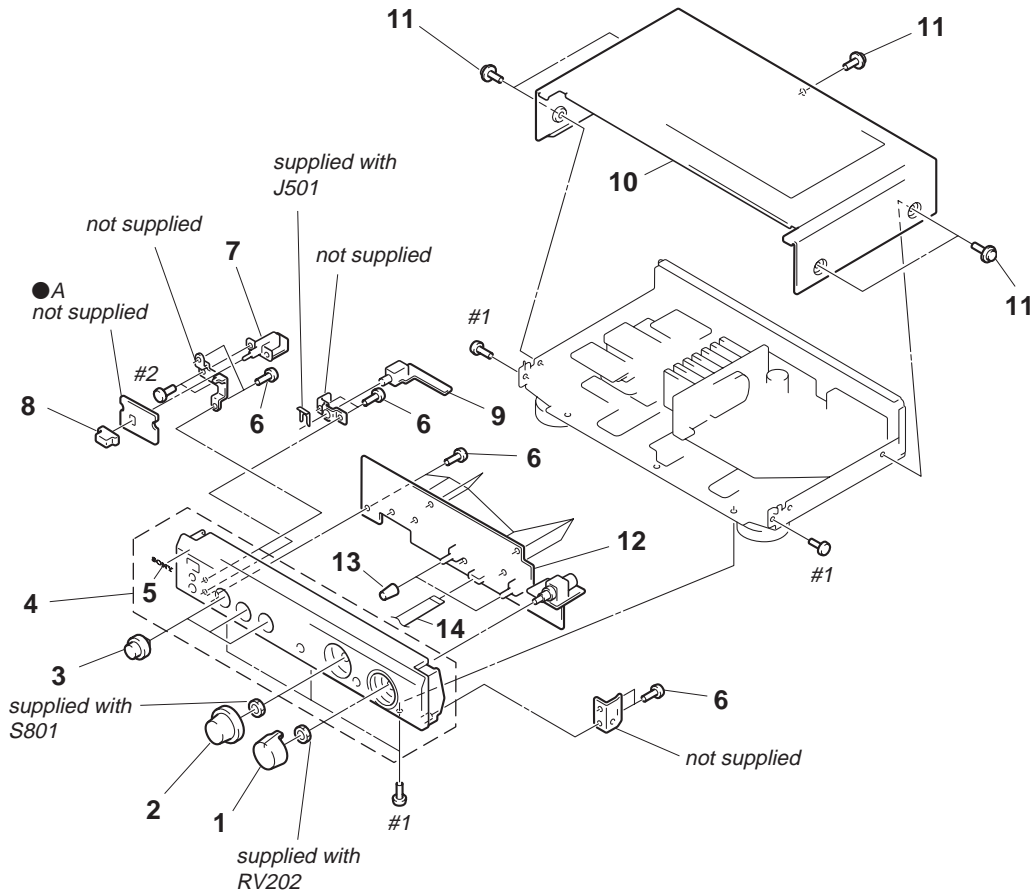
NOTE:

- -XX and -X mean standardized parts, so they may have some difference from the original one.
- Color Indication of Appearance Parts
Example:
KNOB, BALANCE (WHITE) . . . (RED)
 ↑ ↑
 Parts Color Cabinet's Color

- Items marked “*” are not stocked since they are seldom required for routine service. Some delay should be anticipated when ordering these items.
- The mechanical parts with no reference number in the exploded views are not supplied.
- Hardware (# mark) list and accessories and packing materials are given in the last of the electrical parts list.

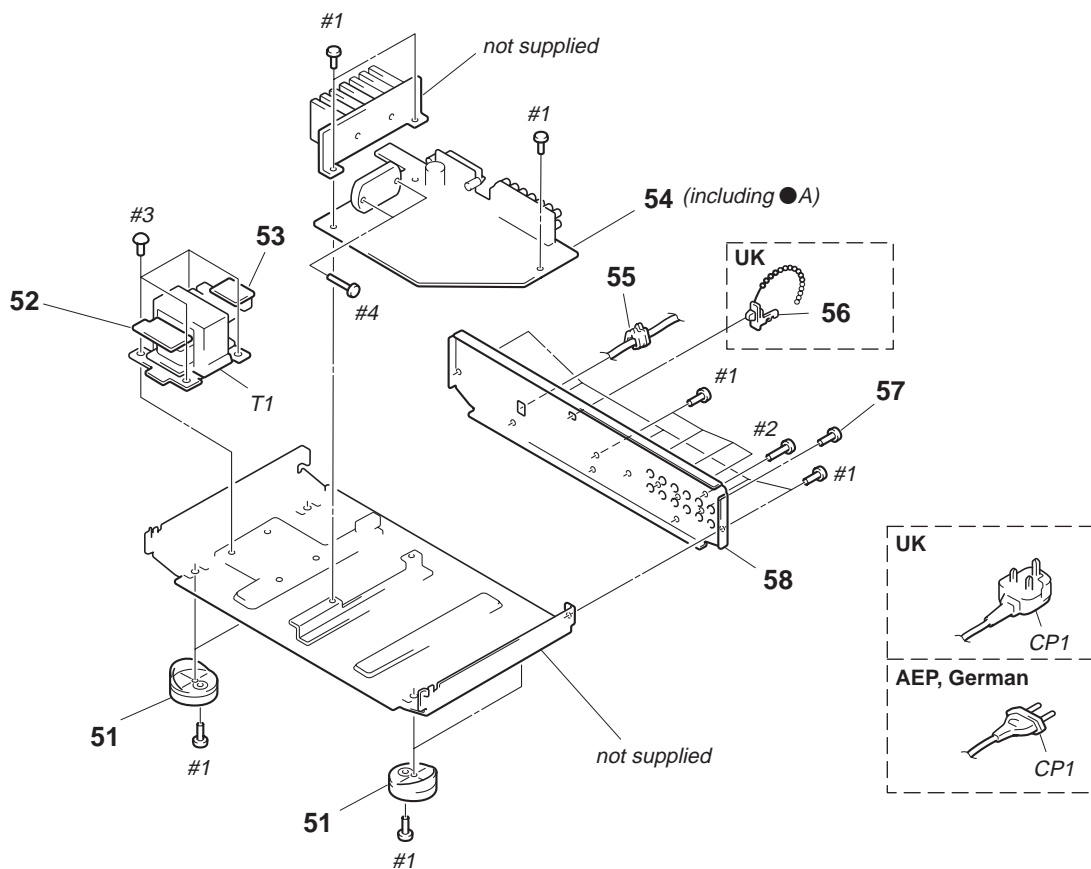
The components identified by mark Δ or dotted line with mark Δ are critical for safety. Replace only with part number specified.

(1) CASE, FRONT PANEL SECTION



Ref. No.	Part No.	Description	Remark	Ref. No.	Part No.	Description	Remark
1	X-4946-800-1	KNOB (VOL) ASSY		8	4-980-199-01	BUTTON (POWER)	
2	X-4947-336-1	KNOB (DIA. 47) ASSY		* 9	1-659-953-11	HEADPHONE BOARD	
3	4-980-204-01	KNOB (DIA. 24)		* 10	4-980-777-41	CASE (409526)	
4	X-4946-799-3	PANEL ASSY, FRONT		11	3-704-366-01	SCREW (CASE)(M3X8)	
5	4-963-404-21	EMBLEM (5-A), SONY		* 12	A-4389-375-A	CONTROL BOARD, COMPLETE	
6	4-951-620-01	SCREW (2.6X8), +BVTP		13	4-980-189-01	KNOB (DIA. 6)	
* 7	1-659-952-11	AC SW BOARD		14	1-773-154-11	WIRE (FLAT TYPE)(21 CORE)	

(2) CHASSIS SECTION



The components identified by mark \triangle or dotted line with mark \triangle are critical for safety.
Replace only with part number specified.

Ref. No.	Part No.	Description	Remark	Ref. No.	Part No.	Description	Remark
51	X-4947-207-1	FOOT ASSY (F50150S)		57	3-704-515-11	SCREW (BV/RING)	
* 52	1-659-954-11	AC IN BOARD		* 58	4-980-202-01	PANEL, BACK (AEP, German)	
* 53	1-659-955-11	CN DC BOARD		* 58	4-980-202-11	PANEL, BACK (UK)	
* 54	A-4389-374-A	MAIN BOARD, COMPLETE		\triangle CP1	1-575-651-21	CORD, POWER (AEP, German)	
* 55	3-703-244-00	BUSHING (2104), CORD		\triangle CP1	1-696-586-11	CORD, POWER (UK)	
56	4-956-370-02	BAND, PLUG FIXED (UK)		\triangle T1	1-429-447-11	TRANSFORMER, POWER	

SECTION 4 ELECTRICAL PARTS LIST

AC IN

AC SW

CN DC

CONTROL

NOTE:

- Due to standardization, replacements in the parts list may be different from the parts specified in the diagrams or the components used on the set.
- -XX and -X mean standardized parts, so they may have some difference from the original one.
- RESISTORS
All resistors are in ohms.
METAL: Metal-film resistor.
METAL OXIDE: Metal oxide-film resistor.
F: nonflammable

- Items marked “*” are not stocked since they are seldom required for routine service. Some delay should be anticipated when ordering these items.
- SEMICONDUCTORS
In each case, u: μ , for example:
uA. . . : μ A. . . uPA. . . : μ PA. . .
uPB. . . : μ PB. . . uPC. . . : μ PC. . .
uPD. . . : μ PD. . .
- CAPACITORS
uF: μ F
- COILS
uH: μ H

The components identified by mark Δ or dotted line with mark Δ are critical for safety. Replace only with part number specified.

When indicating parts by reference number, please include the board.

Ref. No.	Part No.	Description	Remark	Ref. No.	Part No.	Description	Remark
*	1-659-954-11	AC IN BOARD *****				< DIODE >	
		< TRANSFORMER >		D901	8-719-028-23	DIODE D3SBA20-4101	
				D906	8-719-200-82	DIODE 11ES2	
						< RESISTOR >	
Δ T1	1-429-447-11	TRANSFORMER, POWER *****		R911	1-249-431-11	CARBON 15K 5% 1/4W	

*	1-659-952-11	AC SW BOARD *****		*	A-4389-375-A	CONTROL BOARD, COMPLETE *****	
	1-533-293-11	FUSE HOLDER < CONNECTOR >				< CAPACITOR >	
* CN1	1-580-230-31	PIN, CONNECTOR (PC BOARD) 2P		C201	1-136-153-00	FILM 0.01uF 5% 50V	
CN2	1-564-321-00	PIN, CONNECTOR 2P < FUSE >		C202	1-136-165-00	FILM 0.1uF 5% 50V	
				C203	1-130-477-00	MYLAR 0.0033uF 5% 50V	
				C204	1-136-159-00	FILM 0.033uF 5% 50V	
				C205	1-130-473-00	MYLAR 0.0015uF 5% 50V	
Δ F1	1-532-502-51	FUSE, TIME-LAG (T1.25A 250V) < SWITCH >		C251	1-136-153-00	FILM 0.01uF 5% 50V	
				C252	1-136-165-00	FILM 0.1uF 5% 50V	
				C253	1-130-477-00	MYLAR 0.0033uF 5% 50V	
				C254	1-136-159-00	FILM 0.033uF 5% 50V	
				C255	1-130-473-00	MYLAR 0.0015uF 5% 50V	
						< CONNECTOR >	
*	1-659-955-11	CN DC BOARD *****		CN801	1-568-838-11	SOCKET, CONNECTOR 21P	
		< CAPACITOR >		CN802	1-562-087-00	SOCKET, CONNECTOR 4P	
						< DIODE >	
C901	1-106-379-12	MYLAR 0.033uF 5% 200V		D802	8-719-313-72	DIODE SEL3810A-CD (TAPE1/DAT)	
C902	1-106-379-12	MYLAR 0.033uF 5% 200V		D803	8-719-313-72	DIODE SEL3810A-CD (TAPE2/MD)	
		< CONNECTOR >		D804	8-719-313-72	DIODE SEL3810A-CD (CD)	
				D805	8-719-313-72	DIODE SEL3810A-CD (TUNER)	
* CN901	1-564-241-11	PIN, CONNECTOR (B4P-VH) 4P		D806	8-719-313-72	DIODE SEL3810A-CD (PHONO)	
						< RESISTOR >	
				R201	1-249-433-11	CARBON 22K 5% 1/4W	
				R202	1-249-421-11	CARBON 2.2K 5% 1/4W	

CONTROL	HEADPHONE	MAIN
----------------	------------------	-------------

Ref. No.	Part No.	Description	Remark
R203	1-249-427-11	CARBON 6.8K	5% 1/4W
R204	1-249-415-11	CARBON 680	5% 1/4W
R205	1-249-421-11	CARBON 2.2K	5% 1/4W
R206	1-249-441-11	CARBON 100K	5% 1/4W
R251	1-249-433-11	CARBON 22K	5% 1/4W
R252	1-249-421-11	CARBON 2.2K	5% 1/4W
R253	1-249-427-11	CARBON 6.8K	5% 1/4W
R254	1-249-415-11	CARBON 680	5% 1/4W
R255	1-249-421-11	CARBON 2.2K	5% 1/4W
R256	1-249-441-11	CARBON 100K	5% 1/4W
R317	1-247-750-11	CARBON 680	5% 1/2W
R367	1-247-750-11	CARBON 680	5% 1/2W
R801	1-249-415-11	CARBON 680	5% 1/4W
R802	1-249-415-11	CARBON 680	5% 1/4W
R803	1-249-415-11	CARBON 680	5% 1/4W
R804	1-249-415-11	CARBON 680	5% 1/4W
R805	1-249-415-11	CARBON 680	5% 1/4W
< VARIABLE RESISTOR >			
RV201	1-223-396-11	RES, VAR, CARBON 100K/100K	(BALANCE)
RV202	1-241-408-11	RES, VAR, CARBON 100K/100K	(VOLUME)
RV203	1-223-397-11	RES, VAR, CARBON 100K/100K	(BASS)
RV204	1-223-397-11	RES, VAR, CARBON 100K/100K	(TREBLE)
< SWITCH >			
S201	1-571-112-21	SWITCH, PUSH (1 KEY)	(LOUDNESS)
S801	1-762-626-11	SWITCH, ROTARY	(INPUT SELECTOR)

*	1-659-953-11	HEADPHONE BOARD	*****
< CONNECTOR >			
CN803	1-560-941-11	PIN, CONNECTOR	4P
< JACK >			
J501	1-774-933-11	JACK (LARGE TYPE)	(PHONES)

*	A-4389-374-A	MAIN BOARD, COMPLETE	*****
*	1-537-738-21	TERMINAL, EARTH	
< CAPACITOR >			
C101	1-162-286-31	CERAMIC 220PF	10% 50V
C102	1-124-903-11	ELECT 1uF	20% 50V
C103	1-162-282-31	CERAMIC 100PF	10% 50V
C104	1-126-967-11	ELECT 47uF	20% 16V
C105	1-130-480-00	MYLAR 0.0056uF	5% 50V
C106	1-130-473-00	MYLAR 0.0015uF	5% 50V

Ref. No.	Part No.	Description	Remark
C107	1-126-963-11	ELECT 4.7uF	20% 50V
C108	1-124-903-11	ELECT 1uF	20% 50V
C151	1-162-286-31	CERAMIC 220PF	10% 50V
C152	1-124-903-11	ELECT 1uF	20% 50V
C153	1-162-282-31	CERAMIC 100PF	10% 50V
C154	1-126-967-11	ELECT 47uF	20% 16V
C155	1-130-480-00	MYLAR 0.0056uF	5% 50V
C156	1-130-473-00	MYLAR 0.0015uF	5% 50V
C157	1-126-963-11	ELECT 4.7uF	20% 50V
C158	1-124-903-11	ELECT 1uF	20% 50V
C301	1-126-964-11	ELECT 10uF	20% 50V
C302	1-162-290-31	CERAMIC 470PF	10% 50V
C305	1-126-933-11	ELECT 100uF	20% 10V
C306	1-126-967-11	ELECT 47uF	20% 50V
C307	1-126-965-11	ELECT 22uF	20% 50V
C308	1-126-965-11	ELECT 22uF	20% 50V
C309	1-126-965-11	ELECT 22uF	20% 50V
C310	1-126-968-11	ELECT 100uF	20% 50V
C311	1-136-495-11	FILM 0.068uF	5% 50V
C312	1-136-495-11	FILM 0.068uF	5% 50V
C313	1-126-967-11	ELECT 47uF	20% 16V
C314	1-162-195-31	CERAMIC 4.7PF	10% 50V
C351	1-126-964-11	ELECT 10uF	20% 50V
C352	1-162-290-31	CERAMIC 470PF	10% 50V
C355	1-126-933-11	ELECT 100uF	20% 10V
C356	1-126-967-11	ELECT 47uF	20% 50V
C361	1-136-495-11	FILM 0.068uF	5% 50V
C362	1-136-495-11	FILM 0.068uF	5% 50V
C363	1-126-967-11	ELECT 47uF	20% 16V
C364	1-162-195-31	CERAMIC 4.7PF	10% 50V
C601	1-124-925-11	ELECT 2.2uF	20% 100V
C602	1-126-923-11	ELECT 220uF	20% 10V
C603	1-126-967-11	ELECT 47uF	20% 16V
C702	1-164-159-11	CERAMIC 0.1uF	50V
C703	1-161-494-00	CERAMIC 0.022uF	25V
C704	1-126-964-11	ELECT 10uF	20% 50V
C903	1-126-224-11	ELECT 4700uF	20% 42V
C904	1-126-224-11	ELECT 4700uF	20% 42V
C905	1-126-948-11	ELECT 100uF	20% 35V
C906	1-126-948-11	ELECT 100uF	20% 35V
C908	1-126-967-11	ELECT 47uF	20% 16V
C909	1-126-967-11	ELECT 47uF	20% 16V
C910	1-126-967-11	ELECT 47uF	20% 16V
C911	1-126-967-11	ELECT 47uF	20% 16V
C912	1-124-925-11	ELECT 2.2uF	20% 100V
C916	1-126-963-11	ELECT 4.7uF	20% 50V
< CONNECTOR >			
CN701	1-568-838-11	SOCKET, CONNECTOR	21P
* CN902	1-564-241-11	PIN, CONNECTOR (B4P-VH)	4P

Ref. No.	Part No.	Description	Remark	Ref. No.	Part No.	Description	Remark
		< DIODE >		R106	1-249-417-11	CARBON	1K 5% 1/4W
				R107	1-249-417-11	CARBON	1K 5% 1/4W
D301	8-719-987-63	DIODE 1N4148M		R108	1-249-411-11	CARBON	330 5% 1/4W
D302	8-719-987-63	DIODE 1N4148M		R109	1-249-437-11	CARBON	47K 5% 1/4W
D351	8-719-987-63	DIODE 1N4148M		R110	1-249-416-11	CARBON	820 5% 1/4W
D352	8-719-987-63	DIODE 1N4148M					
D601	8-719-987-63	DIODE 1N4148M		R111	1-247-897-11	CARBON	560K 5% 1/4W
				R112	1-249-437-11	CARBON	47K 5% 1/4W
D902	8-719-001-15	DIODE UZL-9M2		R113	1-249-441-11	CARBON	100K 5% 1/4W
D903	8-719-001-15	DIODE UZL-9M2		R114	1-249-409-11	CARBON	220 5% 1/4W
D909	8-719-987-63	DIODE 1N4148M		R115	1-249-427-11	CARBON	6.8K 5% 1/4W
		< IC >		R151	1-247-807-31	CARBON	100 5% 1/4W
IC101	8-759-184-02	IC NJM2068L-D		R152	1-249-417-11	CARBON	1K 5% 1/4W
IC102	8-759-000-49	IC MC14066BCP		R153	1-249-417-11	CARBON	1K 5% 1/4W
IC103	8-759-802-52	IC LC7818		R154	1-249-417-11	CARBON	1K 5% 1/4W
IC301	8-749-941-52	IC STK-4152II		R155	1-249-417-11	CARBON	1K 5% 1/4W
IC601	8-759-111-68	IC uPC1237HA					
		< JACK >		R156	1-249-417-11	CARBON	1K 5% 1/4W
J101	1-774-411-11	JACK, PIN 6P (PHONO,TUNER,CD)		R157	1-249-417-11	CARBON	1K 5% 1/4W
J102	1-695-188-31	JACK, PIN 4P (TAPE2/MD)		R158	1-249-411-11	CARBON	330 5% 1/4W
J103	1-695-188-31	JACK, PIN 4P (TAPE1/DAT)		R159	1-249-437-11	CARBON	47K 5% 1/4W
		< COIL >		R160	1-249-416-11	CARBON	820 5% 1/4W
L301	1-420-872-00	COIL, AIR-CORE					
L351	1-420-872-00	COIL, AIR-CORE		R161	1-247-897-11	CARBON	560K 5% 1/4W
		< TRANSISTOR >		R162	1-249-437-11	CARBON	47K 5% 1/4W
Q101	8-729-141-26	TRANSISTOR 2SC3622A-LK		R163	1-249-441-11	CARBON	100K 5% 1/4W
Q151	8-729-141-26	TRANSISTOR 2SC3622A-LK		R164	1-249-409-11	CARBON	220 5% 1/4W
Q301	8-729-140-82	TRANSISTOR 2SA988-PAFAEA		R165	1-249-427-11	CARBON	6.8K 5% 1/4W
Q351	8-729-140-82	TRANSISTOR 2SA988-PAFAEA					
Q701	8-729-119-76	TRANSISTOR 2SA1175-HFE		R207	1-249-425-11	CARBON	4.7K 5% 1/4W
				R257	1-249-425-11	CARBON	4.7K 5% 1/4W
Q702	8-729-900-36	TRANSISTOR DTC124ES		R301	1-249-439-11	CARBON	68K 5% 1/4W
Q703	8-729-900-63	TRANSISTOR DTA124ES		R302	1-249-417-11	CARBON	1K 5% 1/4W
Q704	8-729-900-36	TRANSISTOR DTC124ES		R303	1-249-415-11	CARBON	680 5% 1/4W
Q705	8-729-900-63	TRANSISTOR DTA124ES					
Q706	8-729-900-89	TRANSISTOR DTC144ES		R304	1-249-439-11	CARBON	68K 5% 1/4W
				R305	1-249-421-11	CARBON	2.2K 5% 1/4W
Q707	8-729-119-76	TRANSISTOR 2SA1175-HFE		R306	1-260-103-11	CARBON	2.2K 5% 1/2W
Q901	8-729-281-54	TRANSISTOR 2SC1815-BL		R307	1-249-405-11	CARBON	100 5% 1/4W
Q902	8-729-201-53	TRANSISTOR 2SA1015-GR		R308	1-260-099-11	CARBON	1K 5% 1/2W
		< RESISTOR >					
R101	1-247-807-31	CARBON	100 5% 1/4W	R309	1-260-099-11	CARBON	1K 5% 1/2W
R102	1-249-417-11	CARBON	1K 5% 1/4W	R310	1-249-405-11	CARBON	100 5% 1/4W
R103	1-249-417-11	CARBON	1K 5% 1/4W	R312	1-249-419-11	CARBON	1.5K 5% 1/4W
R104	1-249-417-11	CARBON	1K 5% 1/4W	R313	1-249-431-11	CARBON	15K 5% 1/4W
R105	1-249-417-11	CARBON	1K 5% 1/4W	△R314	1-217-151-00	METAL PLATE	0.22 10% 2W F
				R315	1-249-437-11	CARBON	47K 5% 1/4W
				R316	1-247-727-11	CARBON	10 5% 1/2W
				R318	1-249-393-11	CARBON	10 5% 1/4W
				R320	1-249-393-11	CARBON	10 5% 1/4W
				R321	1-249-393-11	CARBON	10 5% 1/4W
				R351	1-249-439-11	CARBON	68K 5% 1/4W
				R352	1-249-417-11	CARBON	1K 5% 1/4W
				R353	1-249-415-11	CARBON	680 5% 1/4W
				R354	1-249-439-11	CARBON	68K 5% 1/4W

The components identified by mark △ or dotted line with mark △ are critical for safety. Replace only with part number specified.

MAIN

Ref. No.	Part No.	Description			Remark	Ref. No.	Part No.	Description	Remark
R355	1-249-421-11	CARBON	2.2K	5%	1/4W			MISCELLANEOUS	
R356	1-260-103-11	CARBON	2.2K	5%	1/2W			*****	
R362	1-249-419-11	CARBON	1.5K	5%	1/4W				
R363	1-249-431-11	CARBON	15K	5%	1/4W				
△R364	1-217-151-00	METAL PLATE	0.22	10%	2W F	14	1-773-154-11	WIRE (FLAT TYPE)(21 CORE)	
R365	1-249-439-11	CARBON	68K	5%	1/4W	△CP1	1-575-651-21	CORD, POWER (AEP, German)	
						△CP1	1-696-586-11	CORD, POWER (UK)	
						△T1	1-429-447-11	TRANSFORMER, POWER	

R366	1-247-727-11	CARBON	10	5%	1/2W				
R368	1-249-393-11	CARBON	10	5%	1/4W				
R601	1-247-745-11	CARBON	330	5%	1/2W			*****	
R602	1-247-745-11	CARBON	330	5%	1/2W			HARDWARE LIST	
R603	1-249-417-11	CARBON	1K	5%	1/4W			*****	
R604	1-249-441-11	CARBON	100K	5%	1/4W	#1	7-685-646-01	SCREW +BVTP 3X8 TYPE1	
R605	1-249-437-11	CARBON	47K	5%	1/4W	#2	7-682-548-04	SCREW +BVTT 3X8 (S)	
R606	1-249-429-11	CARBON	10K	5%	1/4W	#3	7-682-560-04	SCREW +BVTT 4X6 (S)	
R701	1-247-903-00	CARBON	1M	5%	1/4W	#4	7-685-650-79	SCREW +BVTP 3X16 TYPE2 IT-3	
R702	1-249-437-11	CARBON	47K	5%	1/4W			*****	
R703	1-249-433-11	CARBON	22K	5%	1/4W			ACCESSORIES & PACKING MATERIALS	
R704	1-249-433-11	CARBON	22K	5%	1/4W			*****	
R705	1-249-433-11	CARBON	22K	5%	1/4W				
R706	1-249-437-11	CARBON	47K	5%	1/4W				
R707	1-249-433-11	CARBON	22K	5%	1/4W		3-856-216-11	MANUAL, INSTRUCTION (ENGLISH, FRENCH, SPANISH, PORTUGUESE)(AEP, UK)	
R708	1-249-433-11	CARBON	22K	5%	1/4W		3-856-216-21	MANUAL, INSTRUCTION (GERMAN, DUTCH, SWEDISH, ITALIAN)(AEP)	
R709	1-249-435-11	CARBON	33K	5%	1/4W		3-856-216-31	MANUAL, INSTRUCTION (GERMAN)(German)	
R710	1-249-433-11	CARBON	22K	5%	1/4W	*	4-981-575-01	CUSHION	
R711	1-249-433-11	CARBON	22K	5%	1/4W	*	4-981-581-01	INDIVIDUAL CARTON	
R712	1-249-433-11	CARBON	22K	5%	1/4W				
R902	1-247-750-11	CARBON	680	5%	1/2W				
R903	1-247-750-11	CARBON	680	5%	1/2W				
R904	1-247-750-11	CARBON	680	5%	1/2W				
R905	1-247-750-11	CARBON	680	5%	1/2W				
R907	1-247-752-11	CARBON	1K	5%	1/2W				
R908	1-247-752-11	CARBON	1K	5%	1/2W				
R910	1-249-429-11	CARBON	10K	5%	1/4W				
R912	1-249-429-11	CARBON	10K	5%	1/4W				
R913	1-249-433-11	CARBON	22K	5%	1/4W				
		< RELAY >							
RY601	1-515-920-11	RELAY (24V)							
		< TERMINAL >							
TM301	1-537-238-11	TERMINAL BOARD (SPEAKERS)							

The components identified by mark △ or dotted line with mark △ are critical for safety. Replace only with part number specified.