

TA-N220

SERVICE MANUAL

*AEP Model
UK Model
E Model*



SPECIFICATIONS

Audio power specifications

POWER OUTPUT AND TOTAL HARMONIC DISTORTION:

With 6 ohm loads, both channels driven, from 20 - 20,000 Hz; rated 50 watts per channel minimum RMS power, with no more than 0.12 % total harmonic distortion from 250 milliwatts to rated output

Other specifications

Continuous RMS power output (both channels driven simultaneously)

Model for Scandinavian countries

Normal: 30 W x 4 (6 ohms, 0.12 %, 20 Hz - 20 kHz)

40 W x 4 (6 ohms, DIN)

BTL: 75 W x 2 (8 ohms, 0.12 %, 20 Hz - 20 kHz)

95 W x 2 (8 ohms, DIN)

Models for other countries

Normal: 50 W x 4 (6 ohms, 0.12 %, 20 Hz - 20 kHz)

60 W x 4 (6 ohms, DIN)

BTL: 100 W x 2 (8 ohms, 0.12 %, 20 Hz - 20 kHz)

130 W x 2 (8 ohms, DIN)

Power bandwidth (IHF)

12 Hz - 40 kHz (6 ohms, THD 0.5 %)

Frequency response

7 Hz - 100 kHz ± 3 dB

Input sensitivity

370 mV (50 kohms)

Signal-to-noise ratio

90 dB (input shorted)

Speaker output

Normal: 6 - 16 ohms

BTL: 8 - 16 ohms

General

System

Complementary Darlington SEPP power amplifier with all stages direct coupled

Power requirements

U.K. model:

240 V AC, 50/60 Hz

European model:

220/230 V AC, 50/60 Hz

Models for other countries:

120, 220, or 240 V AC adjustable, 50/60 Hz

Power consumption

140 W

Dimensions

U.K. model:

Approx. 430 x 135 x 370 mm (w/h/d)

(17 x 5 $\frac{3}{8}$ x 14 $\frac{5}{8}$ inches)

Models for other countries

Approx. 470 x 135 x 370 mm (w/h/d)

(18 $\frac{5}{8}$ x 5 $\frac{3}{8}$ x 14 $\frac{5}{8}$ inches)

including projecting parts and controls

Weight

U.K. model:

Approx. 9.5 kg (15 lb 10 oz), net

Models for other countries

Approx. 10 kg (22 lb 7 oz), net

Supplied accessory

Screws (4) (except for U.K. model)

Design and specifications are subject to change without notice.

Note

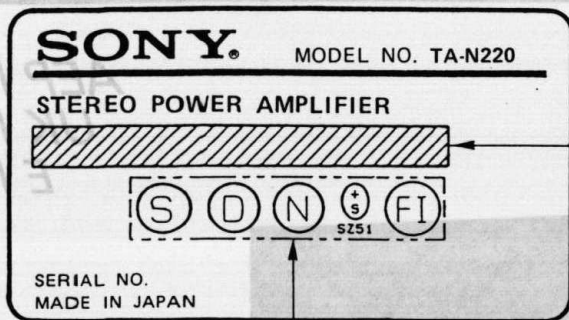
This appliance conforms with EEC Directive 87/308/EEC regarding interference suppression.



STEREO POWER AMPLIFIER SONY®

MODEL IDENTIFICATION

- Model Number Label -



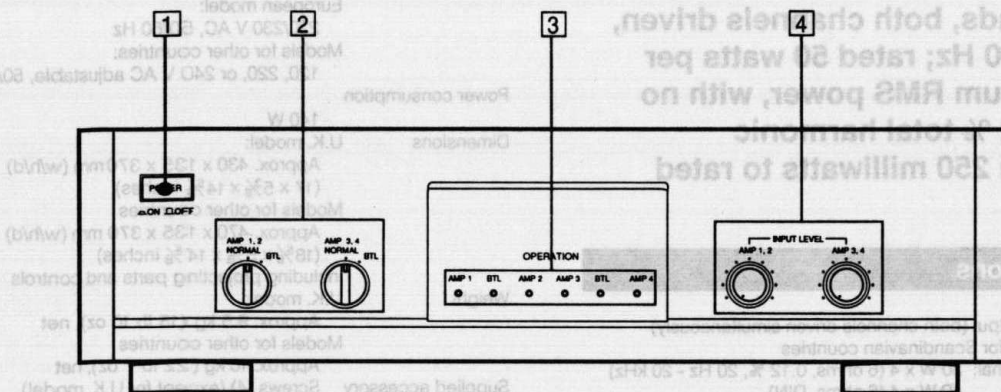
AE2 Model only

AE1, AE2, Germany Models: AC: 220V - 230V ~ 50/60Hz
 UK Model: AC: 240V ~ 50/60Hz
 E Model: AC: 120/220/240V ~ 50/60Hz

SECTION 1 GENERAL

This section is extracted from
instruction manual.

1-1. LOCATION AND FUNCTION OF CONTROLS



1 POWER switch

2 NORMAL/BTL switches

Selects the amplifier operation according to the input and speaker connections.

AMP 1, 2

NORMAL: When the SPEAKER 1 and/or 2 terminals and the INPUT 1 and/or 2 jacks are used.

BTL: When the SPEAKER BTL A terminal and the INPUT A jack are used.

AMP 3, 4

NORMAL: When the SPEAKER 3 and/or 4 terminals and the INPUT 3 and/or 4 jacks are used.

BTL: When the SPEAKER BTL B terminal and the INPUT B jack are used.

- See the "Hooking up a system" section for the system setup and the settings of these switches.

3 OPERATION indicators

Lights up to indicate the number of channels to be used.

When the NORMAL/BTL switches are set to the NORMAL positions, the AMP 1, 2, 3 and 4 indicators light up.

When the NORMAL/BTL switches are set to the BTL positions, the BTL indicators light up.

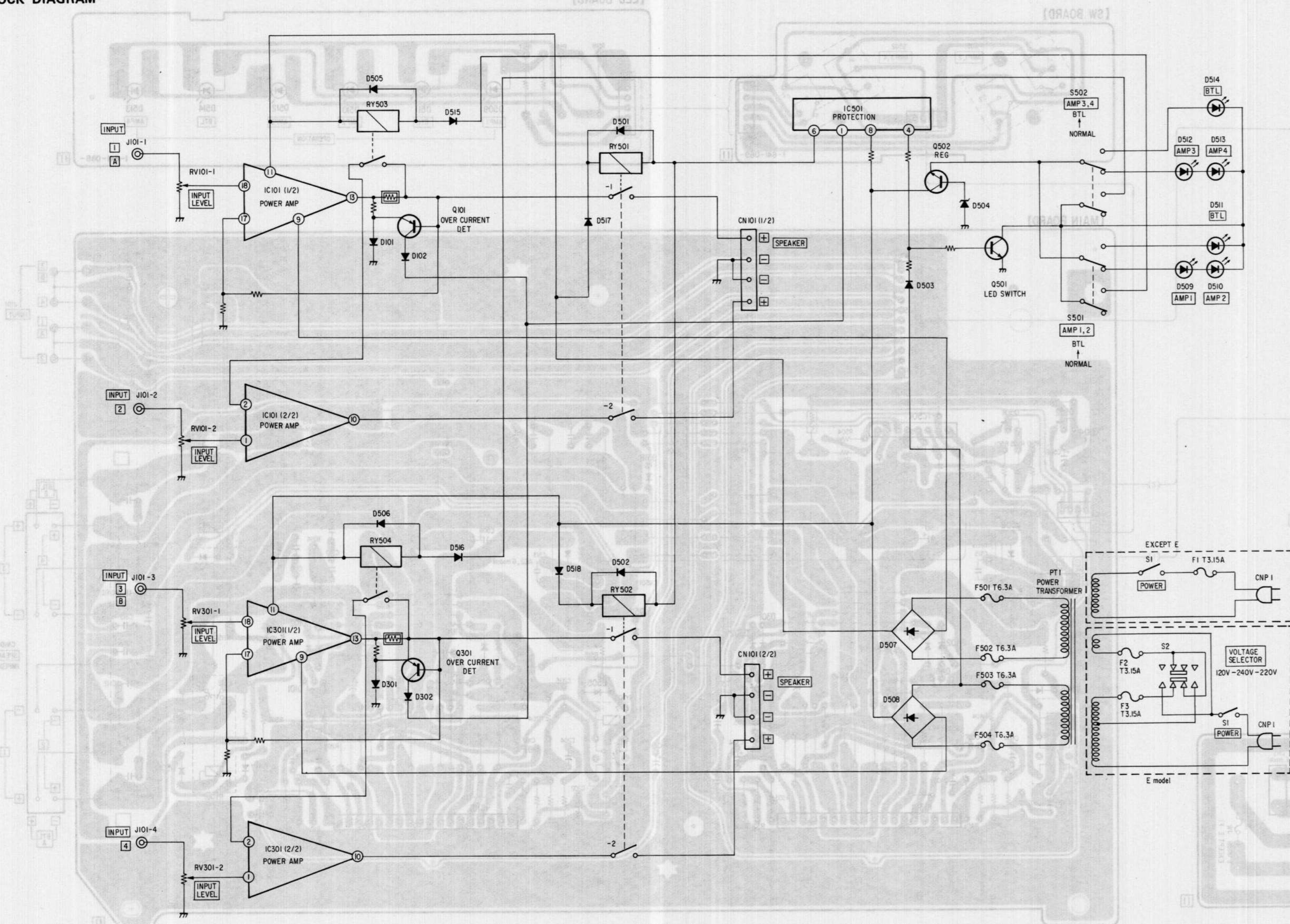
4 INPUT LEVEL controls

AMP 1, 2: Adjusts the input signal connected to the INPUT 1 and 2 jacks.

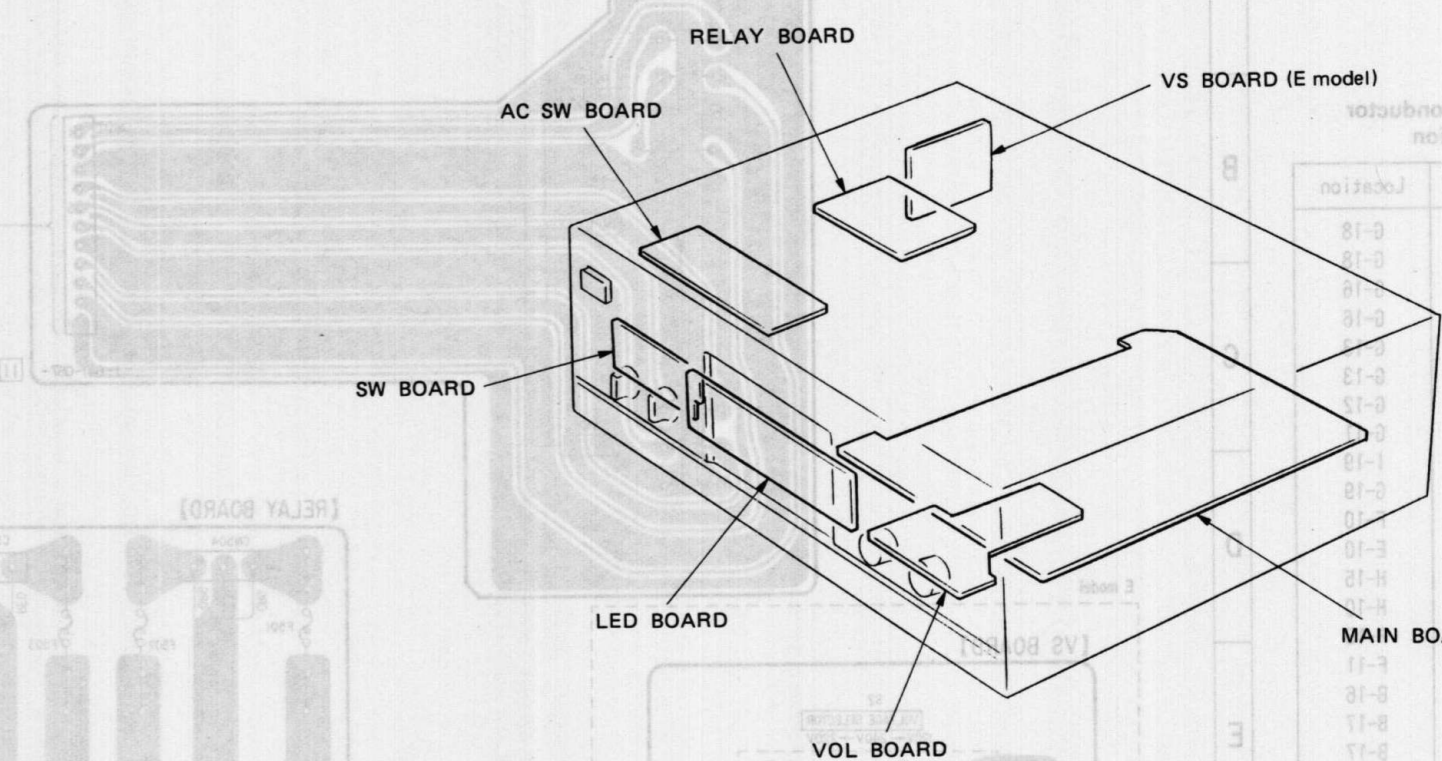
AMP 3, 4: Adjusts the input signal connected to the INPUT 3 and 4 jacks.

SECTION 2 DIAGRAMS

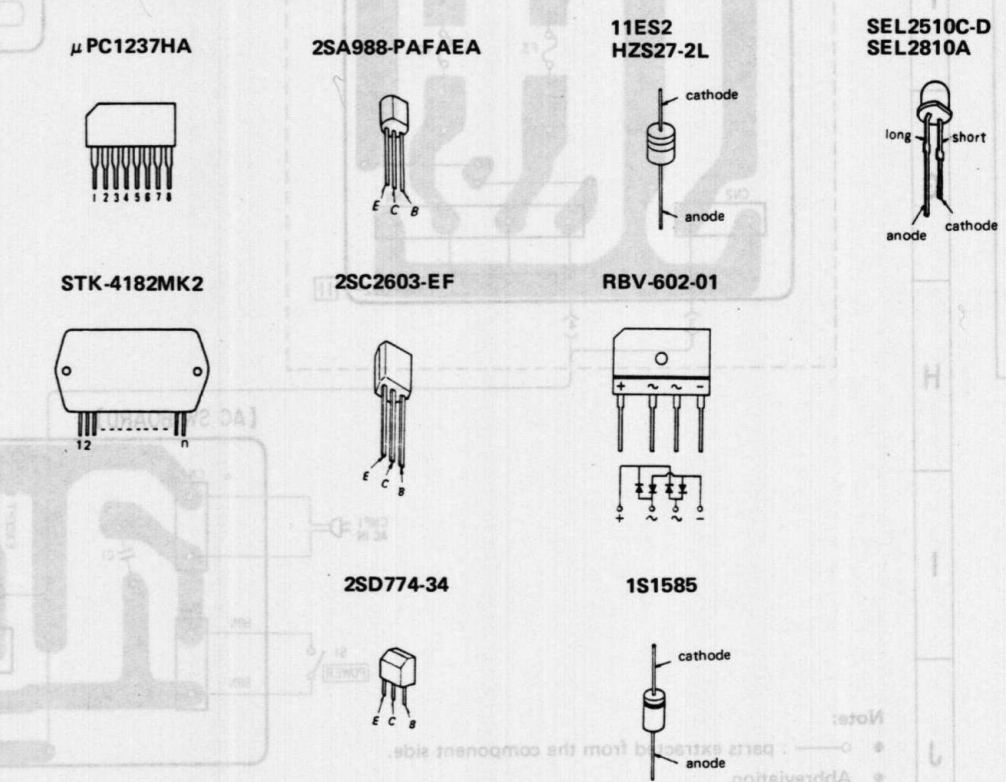
2-1. BLOCK DIAGRAM



2-2. CIRCUIT BOARDS LOCATION



2-3. SEMICONDUCTOR LEAD LAYOUTS

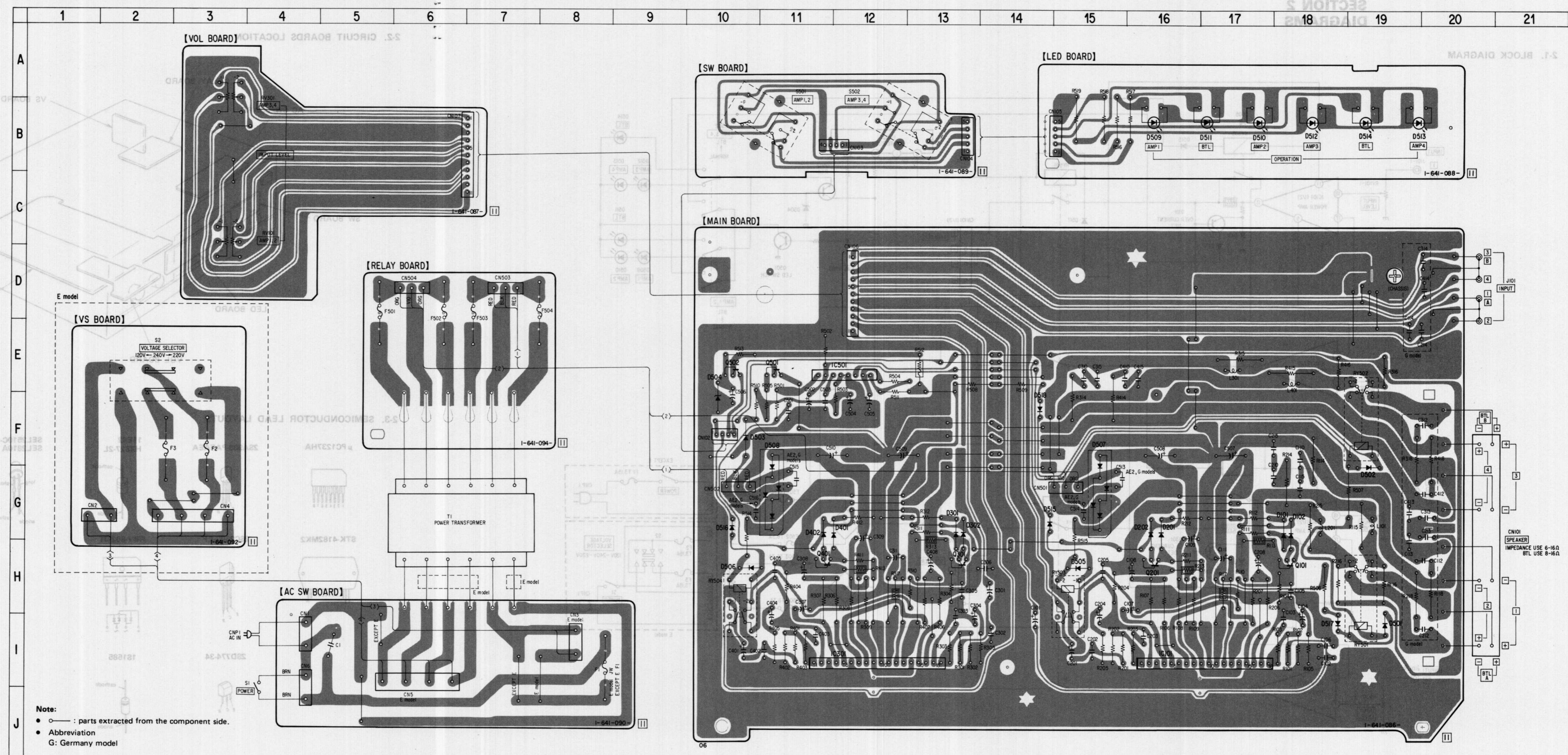


Note:
 * parts extend from the component side
 * Abbreviation
 * Germany model

2-4. PRINTED WIRING BOARDS • See page 5 for Semiconductor Lead Layouts.

• Semiconductor Location

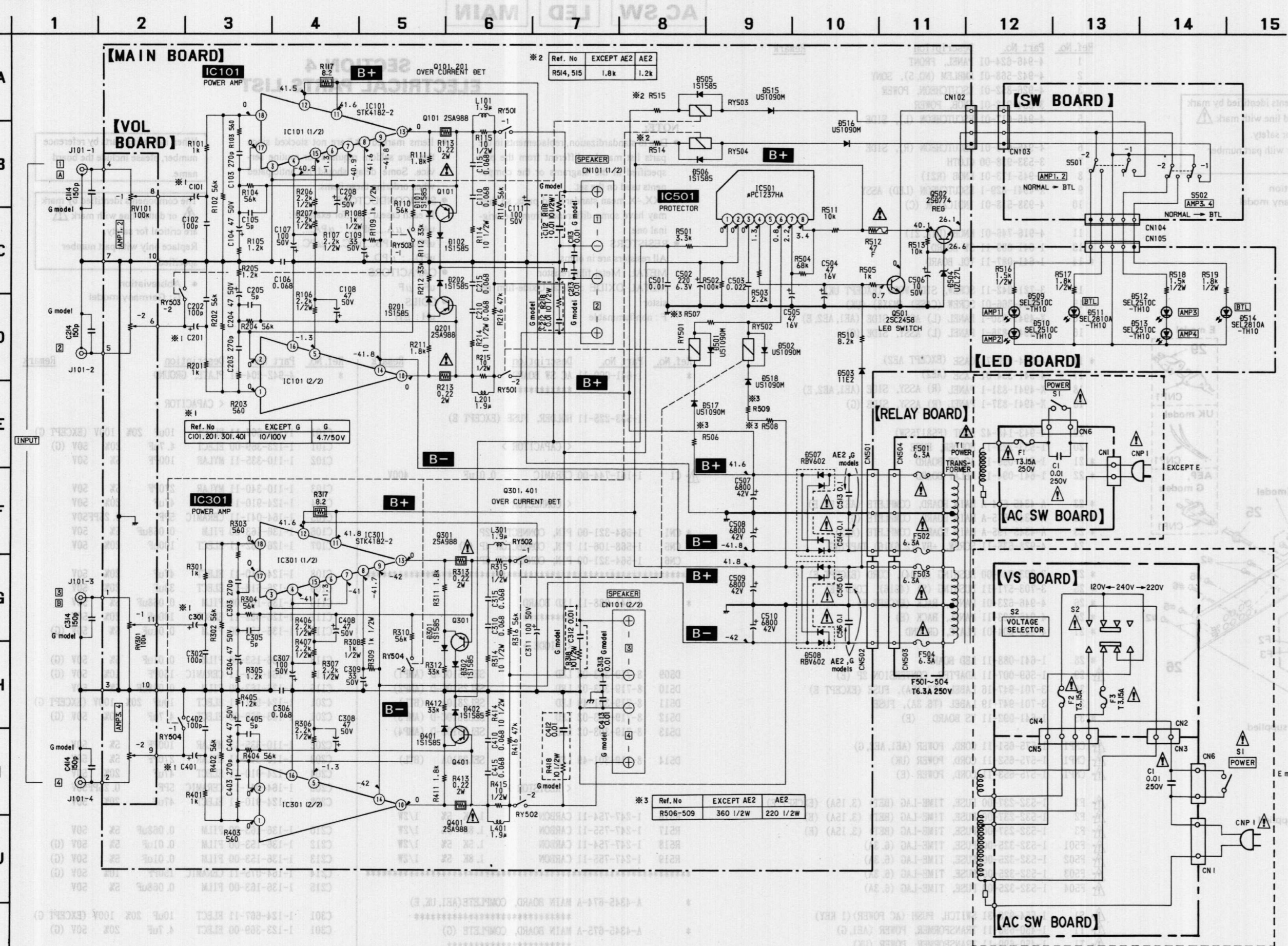
Ref. No.	Location
D101	G-18
D102	G-18
D201	G-16
D202	G-16
D301	G-13
D302	G-13
D401	G-12
D402	G-11
D501	I-19
D502	G-19
D503	F-10
D504	E-10
D505	H-15
D506	H-10
D507	F-15
D508	F-11
D509	B-16
D510	B-17
D511	B-17
D512	B-18
D513	B-19
D514	B-19
D515	G-14
D516	G-10
D517	I-18
D518	F-14
IC101	I-16
IC301	I-12
IC501	E-12
Q101	H-18
Q201	H-16
Q301	H-13
Q401	H-11
Q501	E-11
Q502	E-10



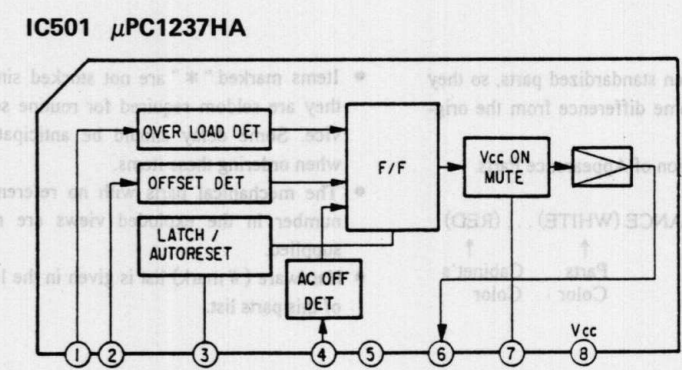
Note:

- — : parts extracted from the component side.
- Abbreviation
- G: Germany model

2.5. SCHEMATIC DIAGRAM



2.6. IC BLOCK DIAGRAM



- Note:**
- All capacitors are in μF unless otherwise noted. pF : μF 50V or less are not indicated except for electrolytics and tantalums.
 - All resistors are in Ω and $\frac{1}{4}\text{W}$ or less unless otherwise specified.
 - \square : nonflammable resistor.
 - \square : fusible resistor.
 - $B+$: B+ line.
 - $B-$: B- line.
 - Voltages are taken with a VOM, (Input impedance $10\text{M}\Omega$) Voltage variations may be noted due to normal production tolerances.
 - Signal path.
 - \Rightarrow : SOUND

Note: The components identified by mark \triangle or dotted line with mark \triangle are critical for safety. Replace only with part number specified.

- Abbreviation
- G: Germany model

SECTION 3 EXPLODED VIEW

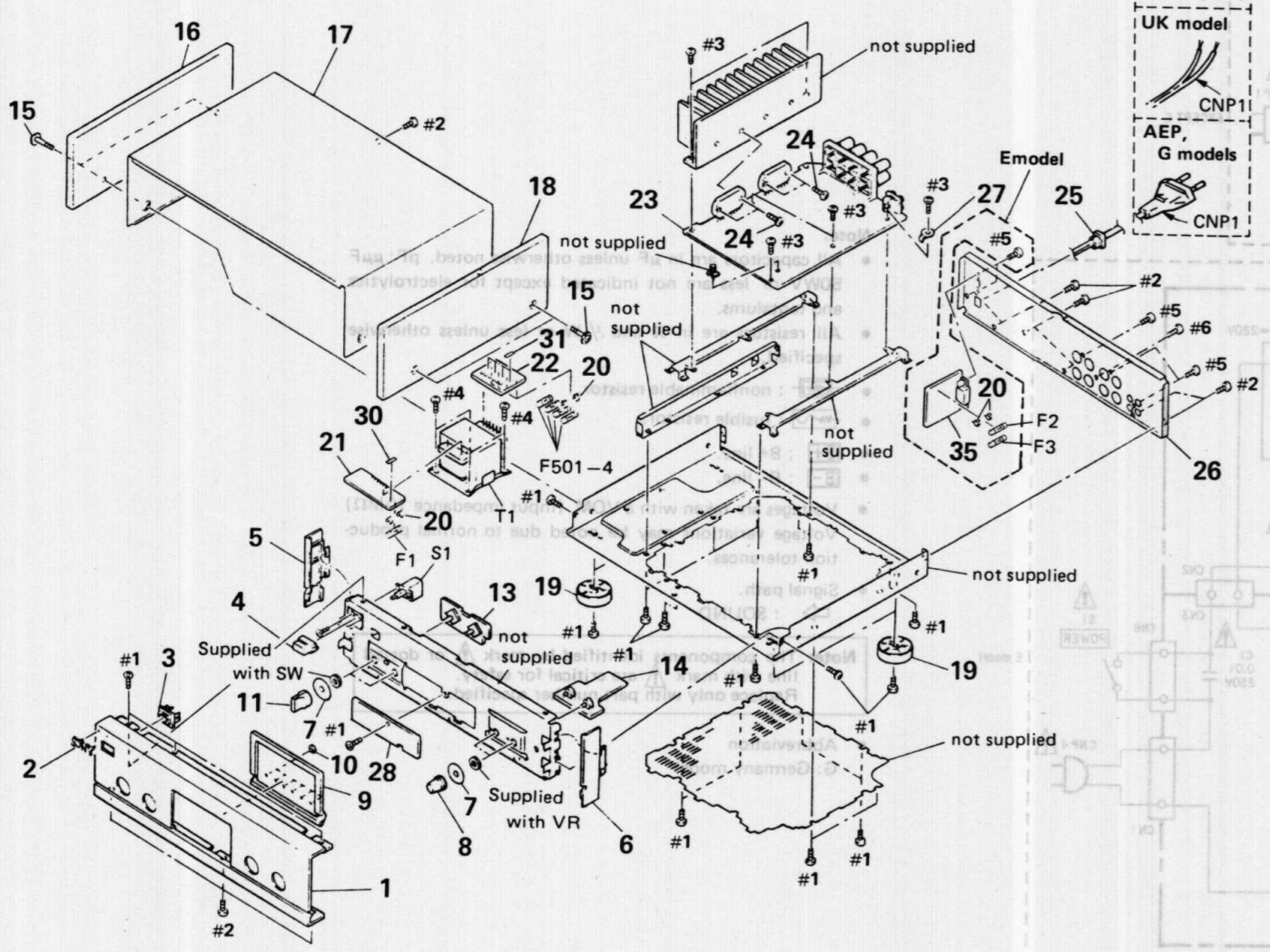
NOTE:

- XX,-X mean standardized parts, so they may have some difference from the original one.
- Color indication of Appearance Parts.
Example:
KNOB,BALANCE (WHITE) ... (RED)
- Items marked "*" are not stocked since they are seldom required for routine service. Some delay should be anticipated when ordering these items.
- The mechanical parts with no reference number in the exploded views are not supplied.
- Hardware (# mark) list is given in the last of this parts list.

The components identified by mark or dotted line with mark are critical for safety.
Replace only with part number specified.

- Abbreviation
G: Germany model

3-1. GENERAL SECTION



Ref.No.	Part No.	Description	Remark
1	4-946-624-01	PANEL, FRONT	
2	4-942-568-01	EMBLEM (NO. 5), SONY	
3	4-926-852-01	ESCUTCHEON, POWER	
4	3-354-912-01	KNOB, POWER	
5	4-946-617-01	ESCUTCHEON (L), SIDE	
6	4-946-618-01	ESCUTCHEON (R), SIDE	
7	3-533-938-00	CLOTH	
8	4-945-173-01	KNOB (R21)	
9	X-4941-829-1	ESCUTCHEON (LED) ASSY	
10	4-938-518-01	INDICATOR (C)	
11	4-916-745-01	KNOB (DIA. 21)	
* 13	1-641-089-11	SW BOARD	
* 14	1-641-087-11	VOL BOARD	
15	3-721-342-11	SCREW, SIDE WOOD (EXCEPT UK)	
15	3-704-366-01	SCREW (CASE) (M3X8) (UK)	
16	X-4941-830-1	PANEL (L) ASSY, SIDE (AE1, AE2, E)	
16	X-4941-836-1	PANEL (L) ASSY, SIDE (G)	
* 17	4-924-920-71	CASE (EXCEPT AE2)	
17	4-941-354-01	CASE (AE2)	
18	X-4941-831-1	PANEL (R) ASSY, SIDE (AE1, AE2, E)	
18	X-4941-837-1	PANEL (R) ASSY, SIDE (G)	
19	4-943-148-42	FOOT (F58175SW)	
20	1-533-225-11	HOLDER, FUSE	
* 21	1-641-090-11	AC SW BOARD	
* 22	1-641-094-11	RELAY BOARD	
* 23	A-4345-674-A	MAIN BOARD, COMPLETE (AE1, UK, E)	
* 23	A-4345-675-A	MAIN BOARD, COMPLETE (G)	
* 23	A-4345-795-A	MAIN BOARD, COMPLETE (AE2)	
24	4-928-635-11	SCREW, +BV (2. 6X16) TAPPING	
* 25	3-703-244-00	BUSHING (2104), CORD (EXCEPT E)	
* 25	3-703-571-11	BUSHING (S) (4516), CORD (E)	
* 26	4-946-623-01	PANEL, BACK (EXCEPT E)	
* 26	4-946-623-11	PANEL, BACK (E)	
* 27	4-942-204-01	PLATE, GROUND	
* 28	1-641-088-11	LED BOARD	
△ 29	1-569-007-11	ADAPTER, CONVERSION 2P (E)	
30	3-701-947-16	LABEL (T3. 15A), FUSE (EXCEPT E)	
31	3-701-947-19	LABEL (T6. 3A), FUSE	
* 35	1-641-092-11	VS BOARD (E)	
△ CNP1	1-575-651-11	CORD, POWER (AE1, AE2, G)	
△ CNP1	1-575-652-11	CORD, POWER (UK)	
△ CNP1	1-575-653-11	CORD, POWER (E)	
△ F1	1-532-237-00	FUSE, TIME-LAG (BET) (3. 15A) (EXCEPT E)	
△ F2	1-532-237-00	FUSE, TIME-LAG (BET) (3. 15A) (E)	
△ F3	1-532-237-00	FUSE, TIME-LAG (BET) (3. 15A) (E)	
△ F501	1-532-325-00	FUSE, TIME-LAG (6. 3A)	
△ F502	1-532-325-00	FUSE, TIME-LAG (6. 3A)	
△ F503	1-532-325-00	FUSE, TIME-LAG (6. 3A)	
△ F504	1-532-325-00	FUSE, TIME-LAG (6. 3A)	
△ S1	1-554-920-31	SWITCH, PUSH (AC POWER) (1 KEY)	
△ T1	1-450-698-11	TRANSFORMER, POWER (AE1, G)	
△ T1	1-450-699-11	TRANSFORMER, POWER (UK)	
△ T1	1-450-700-11	TRANSFORMER, POWER (E)	
△ T1	1-450-701-11	TRANSFORMER, POWER (AE2)	

AC SW LED MAIN

SECTION 4 ELECTRICAL PARTS LIST

NOTE:

- Due to standardization, replacements in the parts list may be different from the part specified in the diagrams or the components used on the set.
- -XX,-X mean standardized parts, so they may have some difference from the original one.
- RESISTORS
All resistors are in ohms
METAL : Metal-film resistor
METAL OXIDE : Metal Oxide-film resistor
F : nonflammable

- Items marked "*" are not stocked since they are seldom required for routine service. Some delay should be anticipated when ordering these items.
- SEMICONDUCTORS
In each case, μ for example :
uA... : μA ..., uPA... : μPA ...,
uPB... : μPB ..., uPC... : μPC ...,
uPD... : μPD ...
- CAPACITORS
uF : μF
- COILS
uH : μH

When indicating parts by reference number, please include the board name.

The components identified by mark or dotted line with mark are critical for safety.
Replace only with part number specified.

- Abbreviation
G: Germany model

Ref.No.	Part No.	Description	Remark	Ref.No.	Part No.	Description	Remark
* 1-641-090-11	AC SW BOARD	*****		* 4-942-204-01	PLATE, GROUND		
1-533-225-11	HOLDER, FUSE (EXCEPT E)			< CAPACITOR >			
△ C1	1-161-744-00	CERAMIC 0.01uF 400V		C101	1-124-667-11	ELECT 10uF 20% 100V (EXCEPT G)	
				C101	1-123-369-00	ELECT 4.7uF 20% 50V (G)	
				C102	1-110-335-11	MYLAR 100PF 5% 50V	
				< CONNECTOR >			
* CN1	1-564-321-00	PIN, CONNECTOR 2P		C103	1-110-340-11	MYLAR 270PF 5% 50V	
CN5	1-568-106-11	PIN, CONNECTOR 4P (E)		C104	1-124-910-11	ELECT 47uF 20% 50V	
CN6	1-564-321-00	PIN, CONNECTOR 2P		C105	1-164-041-11	CERAMIC 5PF 0.25PF50V	
				C106	1-136-163-00	FILM 0.068uF 5% 50V	
				C107	1-126-052-11	ELECT 100uF 20% 50V	
				C108	1-124-910-11	ELECT 47uF 20% 50V	
				C109	1-126-618-11	ELECT 33uF 20% 50V	
				C110	1-136-163-00	FILM 0.068uF 5% 50V	
				C111	1-126-052-11	ELECT 100uF 20% 50V	
				C112	1-136-153-00	FILM 0.01uF 5% 50V (G)	
				C113	1-136-153-00	FILM 0.01uF 5% 50V (G)	
				C114	1-164-075-11	CERAMIC 150PF 10% 50V (G)	
				C115	1-136-163-00	FILM 0.068uF 5% 50V	
				C201	1-124-667-11	ELECT 10uF 20% 100V (EXCEPT G)	
				C201	1-123-369-00	ELECT 4.7uF 20% 50V (G)	
				C202	1-110-335-11	MYLAR 100PF 5% 50V	
				C203	1-110-340-11	MYLAR 270PF 5% 50V	
				C204	1-124-910-11	ELECT 47uF 20% 50V	
				C205	1-164-041-11	CERAMIC 5PF 0.25PF50V	
				C208	1-124-910-11	ELECT 47uF 20% 50V	
				C210	1-136-163-00	FILM 0.068uF 5% 50V	
				C212	1-136-153-00	FILM 0.01uF 5% 50V (G)	
				C213	1-136-153-00	FILM 0.01uF 5% 50V (G)	
				C214	1-164-075-11	CERAMIC 150PF 10% 50V (G)	
				C215	1-136-163-00	FILM 0.068uF 5% 50V	
				C301	1-124-667-11	ELECT 10uF 20% 100V (EXCEPT G)	
				C301	1-123-369-00	ELECT 4.7uF 20% 50V (G)	
				< DIODE >			
D509	8-719-303-02	LED SEL2510C-D (AMP1)					
D510	8-719-303-02	LED SEL2510C-D (AMP2)					
D511	8-719-301-49	LED SEL2810A (BTL)					
D512	8-719-303-02	LED SEL2510C-D (AMP3)					
D513	8-719-303-02	LED SEL2510C-D (AMP4)					
D514	8-719-301-49	LED SEL2810A (BTL)					
				< RESISTOR >			
R516	1-247-754-11	CARBON 1.5K 5% 1/2W					
R517	1-247-755-11	CARBON 1.8K 5% 1/2W					
R518	1-247-754-11	CARBON 1.5K 5% 1/2W					
R519	1-247-755-11	CARBON 1.8K 5% 1/2W					

* A-4345-674-A	MAIN BOARD, COMPLETE (AE1, UK, E)						

* A-4345-675-A	MAIN BOARD, COMPLETE (G)						

* A-4345-795-A	MAIN BOARD, COMPLETE (AE2)						

RELAY

MAIN

Ref. No.	Part No.	Description	Remark
C302	1-110-335-11	MYLAR 100PF 5% 50V	
C303	1-110-340-11	MYLAR 270PF 5% 50V	
C304	1-124-910-11	ELECT 47uF 20% 50V	
C305	1-164-041-11	CERAMIC 5PF 0.25PF50V	
C306	1-136-163-00	FILM 0.068uF 5% 50V	
C307	1-126-052-11	ELECT 100uF 20% 50V	
C308	1-124-910-11	ELECT 47uF 20% 50V	
C309	1-126-618-11	ELECT 33uF 20% 50V	
C310	1-136-163-00	FILM 0.068uF 5% 50V	
C311	1-126-052-11	ELECT 100uF 20% 50V	
C312	1-136-153-00	FILM 0.01uF 5% 50V (G)	
C313	1-136-153-00	FILM 0.01uF 5% 50V (G)	
C314	1-164-075-11	CERAMIC 150PF 10% 50V (G)	
C315	1-136-163-00	FILM 0.068uF 5% 50V	
C401	1-124-667-11	ELECT 10uF 20% 100V (EXCEPT G)	
C401	1-123-369-00	ELECT 4.7uF 20% 50V (G)	
C402	1-110-335-11	MYLAR 100PF 5% 50V	
C403	1-110-340-11	MYLAR 270PF 5% 50V	
C404	1-124-910-11	ELECT 47uF 20% 50V	
C405	1-164-041-11	CERAMIC 5PF 0.25PF50V	
C408	1-124-910-11	ELECT 47uF 20% 50V	
C410	1-136-163-00	FILM 0.068uF 5% 50V	
C412	1-136-153-00	FILM 0.01uF 5% 50V (G)	
C413	1-136-153-00	FILM 0.01uF 5% 50V (G)	
C414	1-164-075-11	CERAMIC 150PF 10% 50V (G)	
C415	1-136-163-00	FILM 0.068uF 5% 50V	
C501	1-136-153-00	FILM 0.01uF 5% 50V	
C502	1-126-176-11	ELECT 220uF 20% 10V	
C503	1-136-157-00	FILM 0.022uF 5% 50V	
C504	1-124-477-11	ELECT 47uF 20% 25V	
C505	1-124-477-11	ELECT 47uF 20% 25V	
C506	1-124-907-11	ELECT 10uF 20% 50V	
C507	1-126-307-11	ELECT 6800uF 20% 50V	
C508	1-126-307-11	ELECT 6800uF 20% 50V	
C509	1-126-307-11	ELECT 6800uF 20% 50V	
C510	1-126-307-11	ELECT 6800uF 20% 50V	
▲ C513	1-136-165-00	FILM 0.1uF 5% 50V (AE2, G)	
▲ C514	1-136-165-00	FILM 0.1uF 5% 50V (AE2, G)	
▲ C515	1-136-165-00	FILM 0.1uF 5% 50V (AE2, G)	
▲ C516	1-136-165-00	FILM 0.1uF 5% 50V (AE2, G)	

< CONNECTOR >			
CN101	1-537-235-11	TERMINAL BOARD (SP) (SPEAKER) (AE1, UK, E)	
CN101	1-537-227-11	TERMINAL BOARD (SP) (SPEAKER) (AE2)	
CN101	1-537-228-11	TERMINAL BOARD (SP) (SPEAKER) (G)	
* CN106	1-569-648-11	PIN, CONNECTOR (PC BOARD) 11P	

* CN501	1-564-104-00	PIN, CONNECTOR (B3P-VH) 3P	
* CN502	1-564-104-00	PIN, CONNECTOR (B3P-VH) 3P	

Ref. No.	Part No.	Description	Remark
< DIODE >			
D101	8-719-815-85	DIODE 1S1585	
D102	8-719-815-85	DIODE 1S1585	
D201	8-719-815-85	DIODE 1S1585	
D202	8-719-815-85	DIODE 1S1585	
D301	8-719-815-85	DIODE 1S1585	
D302	8-719-815-85	DIODE 1S1585	
D401	8-719-815-85	DIODE 1S1585	
D402	8-719-815-85	DIODE 1S1585	
D501	8-719-815-85	DIODE 1S1585	
D502	8-719-815-85	DIODE 1S1585	
D503	8-719-200-82	DIODE 11ES2	
D504	8-719-934-18	DIODE HZS27-2L	
D505	8-719-815-85	DIODE 1S1585	
D506	8-719-815-85	DIODE 1S1585	
D507	8-719-302-38	DIODE RBV-602-01	
D508	8-719-302-38	DIODE RBV-602-01	
D515	8-719-815-85	DIODE 1S1585	
D516	8-719-815-85	DIODE 1S1585	
D517	8-719-815-85	DIODE 1S1585	
D518	8-719-815-85	DIODE 1S1585	
< IC >			
IC101	8-749-900-34	IC STK-4182MK2	
IC301	8-749-900-34	IC STK-4182MK2	
IC501	8-759-111-68	IC uPC1237HA	
< JACK >			
J101	1-569-378-11	JACK, PIN 4P (INPUT)	
< COIL >			
* L101	1-420-872-00	COIL, AIR CORE 1.9uH	
* L201	1-420-872-00	COIL, AIR CORE 1.9uH	
* L301	1-420-872-00	COIL, AIR CORE 1.9uH	
* L401	1-420-872-00	COIL, AIR CORE 1.9uH	
< TRANSISTOR >			
Q101	8-729-140-82	TRANSISTOR 2SA988-PAFAEA	
Q201	8-729-140-82	TRANSISTOR 2SA988-PAFAEA	
Q301	8-729-140-82	TRANSISTOR 2SA988-PAFAEA	
Q401	8-729-140-82	TRANSISTOR 2SA988-PAFAEA	
Q501	8-729-620-05	TRANSISTOR 2SC2603-EF	
Q502	8-729-140-96	TRANSISTOR 2SD774-34	
< RESISTOR >			
R101	1-247-713-11	CARBON 1K 5% 1/4W	
R102	1-249-466-11	CARBON 56K 5% 1/4W	
R103	1-247-710-11	CARBON 560 5% 1/4W	
R104	1-249-466-11	CARBON 56K 5% 1/4W	

Note : The components identified by mark ▲ or dotted line with mark ▲ are critical for safety. Replace only with part number specified.

MAIN RELAY

SW VOL VS

Table with columns: Ref. No., Part No., Description, Remark. Lists various carbon resistors and metal plates.

Table with columns: Ref. No., Part No., Description, Remark. Lists resistors, relays, and boards.

Table with columns: Ref. No., Part No., Description, Remark. Lists SW boards, connectors, switches, and fuses.

Table with columns: Ref. No., Part No., Description, Remark. Lists transformers, accessories, and hardware.

Note : The components identified by mark Δ or dotted line with mark Δ are critical for safety. Replace only with part number specified.

Note : The components identified by mark Δ or dotted line with mark Δ are critical for safety. Replace only with part number specified.

SW VOL VS

Ref. No.	Part No.	Description	Remark
TI	1-450-998-11	TRANSFORMER, POWER (A&I, G)	
TI	1-450-999-11	TRANSFORMER, POWER (UK)	
TI	1-450-100-11	TRANSFORMER, POWER (E)	
TI	1-450-101-11	TRANSFORMER, POWER (A&S)	

 ACCESSORIES & PACKING MATERIALS

 3-671-503-00 SHEET (LARGE), PROTECTION
 3-703-110-41 STICKER, SONY SYMBOL (12)
 3-704-386-01 SCREW (CASE) (M3X8) (EXCEPT UK)
 3-753-948-11 MANUAL, INSTRUCTION (EXCEPT G)
 (ENGLISH, FRENCH, SPANISH, PORTUGUESE)
 3-753-948-41 MANUAL, INSTRUCTION (A&I, A&S, G)
 (GERMAN, DUTCH, SWEDISH, ITALIAN)
 * 4-923-880-01 CUSHION (EXCEPT UK)
 * 4-929-219-01 CUSHION (UK)
 * 4-947-338-01 INDIVIDUAL CARTON (EXCEPT UK)
 * 4-947-337-01 INDIVIDUAL CARTON (UK)

HARDWARE LIST

#1	7-682-248-04	SCREW +BITT	3X8 (2)
#2	7-682-248-09	SCREW +BITT	3X8 (2)
#3	7-682-249-04	SCREW +BITT	3X10 (2)
#4	7-682-260-04	SCREW +BITT	4X8 (2)
#5	7-682-646-79	SCREW +BITT	3X8 TYPES IT-3
#6	7-621-649-00	SCREW, TAPPING	

Note: The components identified by mark or dotted line with mark are critical for safety. Replace only with part number specified.

Ref. No.	Part No.	Description	Remark
*	1-641-089-11	SW BOARD	

	<	CONNECTOR	

* CN104 1-580-531-00 PIN, CONNECTOR 2P
 < SWITCH >
 2S01 1-575-918-11 SWITCH, ROTARY (AMP, I, S)
 2S02 1-572-918-11 SWITCH, ROTARY (AMP, S, A)

 * 1-641-087-11 VOL BOARD

 < CONNECTOR >
 * CN107 1-583-381-11 SOCKET, CONNECTOR 11P
 < VARIABLE RESISTOR >
 RV101 1-338-176-11 RES, VAR, CARBON 100K/100K (AMP, I, S)
 RV301 1-338-176-11 RES, VAR, CARBON 100K/100K (AMP, S, A)

* 1-641-093-11 VS BOARD (B)

 1-233-325-11 HOLDER, FUSE
 < CONNECTOR >
 * CN5 1-584-321-00 PIN, CONNECTOR 2P
 * CN4 1-588-108-11 PIN, CONNECTOR 4P
 < SWITCH >
 2S 1-573-009-11 SELECTOR, VOLTAGE (VOLTAGE SELECTOR)

MISCELLANEOUS

29	1-589-007-11	ADAPTER, CONVERSION 2P (B)	
CN1	1-575-651-11	CORD, POWER (A&I, A&S, G)	
CN1	1-575-652-11	CORD, POWER (UK)	
CN1	1-575-653-11	CORD, POWER (E)	
F1	1-532-237-00	FUSE, TIME-LAG (BET) (3.15A) (EXCEPT B)	
F2	1-532-237-00	FUSE, TIME-LAG (BET) (3.15A) (B)	
F3	1-532-237-00	FUSE, TIME-LAG (BET) (3.15A) (E)	
F501	1-532-325-00	FUSE, TIME-LAG (E, 3A)	
F502	1-532-325-00	FUSE, TIME-LAG (E, 3A)	
F503	1-532-325-00	FUSE, TIME-LAG (E, 3A)	
F504	1-532-325-00	FUSE, TIME-LAG (E, 3A)	
21	1-624-920-21	SWITCH, PUSH (AC POWER) (KEY)	