

33830

TA-V901

SERVICE MANUAL

AEP Model
UK Model
E Model



SPECIFICATIONS

AEP, UK, West Germany, Italian model:

Continuous RMS power output
65 W + 65 W
(6 ohms, at 1 kHz, 5% THD)

E, Saudi Arabia model:

Peak music power output
650 W (6 ohms)

Audio section

Inputs

Jacks	Sensitivity	Impedance
PHONO	2 mV	50 k ohms
VIDEO 1/CD	150 mV	50 k ohms
VIDEO 2/DAT	150 mV	50 k ohms
ADAPTOR	150 mV	50 k ohms
TAPE	150 mV	50 k ohms
MIC	1 mV	10 k ohms

Outputs

Jacks	Voltage	Impedance
VIDEO 1/CD	150 mV	4.7 k ohms
VIDEO 2/DAT	150 mV	4.7 k ohms
DAT	150 mV	4.7 k ohms
TAPE	150 mV	4.7 k ohms

Video section

Inputs VIDEO 1/CD, VIDEO 2/DAT:
1Vp-p, 75 ohms

Outputs VIDEO 1/CD, MONITOR:
1Vp-p, 75 ohms

DA converter section

S/N More than 104 dB
Dynamic range More than 95 dB
Harmonic distortion Less than 0.004 % (1 kHz)

Frequency response

PHONO RIAA curve ± 0.5 dB
VIDEO 1/CD
VIDEO 2/DAT
TUNER 15 Hz to 50 kHz ± 0.5 dB
TAPE
MIC 100 Hz to 10 kHz ± 0.5 dB

General

Power requirements

UK model:
240 V AC, 50/60 Hz
AEP, West Germany, Italian model:
220 V AC, 50/60 Hz
E, Saudi Arabia model:
120 V, 220 V or 240 V AC, 50/60 Hz,
adjustable by AC voltage selector

Power consumption

UK model: 280 W
AEP, West Germany, Italian model: 105 W
E, Saudi Arabia model: 120 W

AC outlets

1 unswitched, 100 W max.

Dimensions

Approx. 355 × 120 × 342 mm (w/h/d)
(14 × 4 3/4 × 13 1/2 inches)
incl. projecting parts and controls

Weight

Approx. 6.3 kg (13 lb 14 oz)

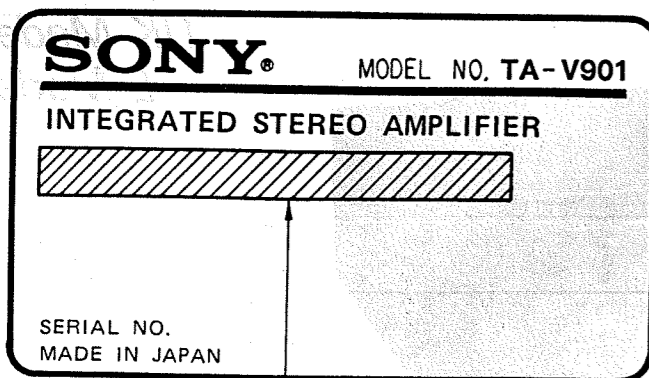
Supplied accessories

Digital optical cord (1)

INTEGRATED STEREO AMPLIFIER SONY®



MODEL IDENTIFICATION
— Specification Label —



AEP, West Germany, Italian Model : AC : 220 V~50/60 Hz
105 W

UK Model : AC : 240 V~50/60 Hz
280 W

E, Saudi Arabia Model : AC : 120/220/240 V
~50/60 Hz 120 W

On operating voltage

Before operating the unit, check that the operating voltage of your unit is identical with the voltage of your local power supply.

Where purchased	Operating voltage
UK model	240 V AC
AEP, West Germany, Italian model	220 V AC
E, Saudi Arabia model	120 V, 220 V or 240 V AC, adjustable The voltage selector is located on the rear panel. If the selector must be reset, disconnect the AC power cord and set the selector to the proper voltage of your local power supply.

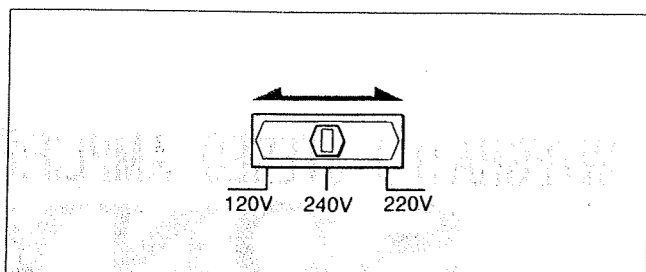


TABLE OF CONTENTS

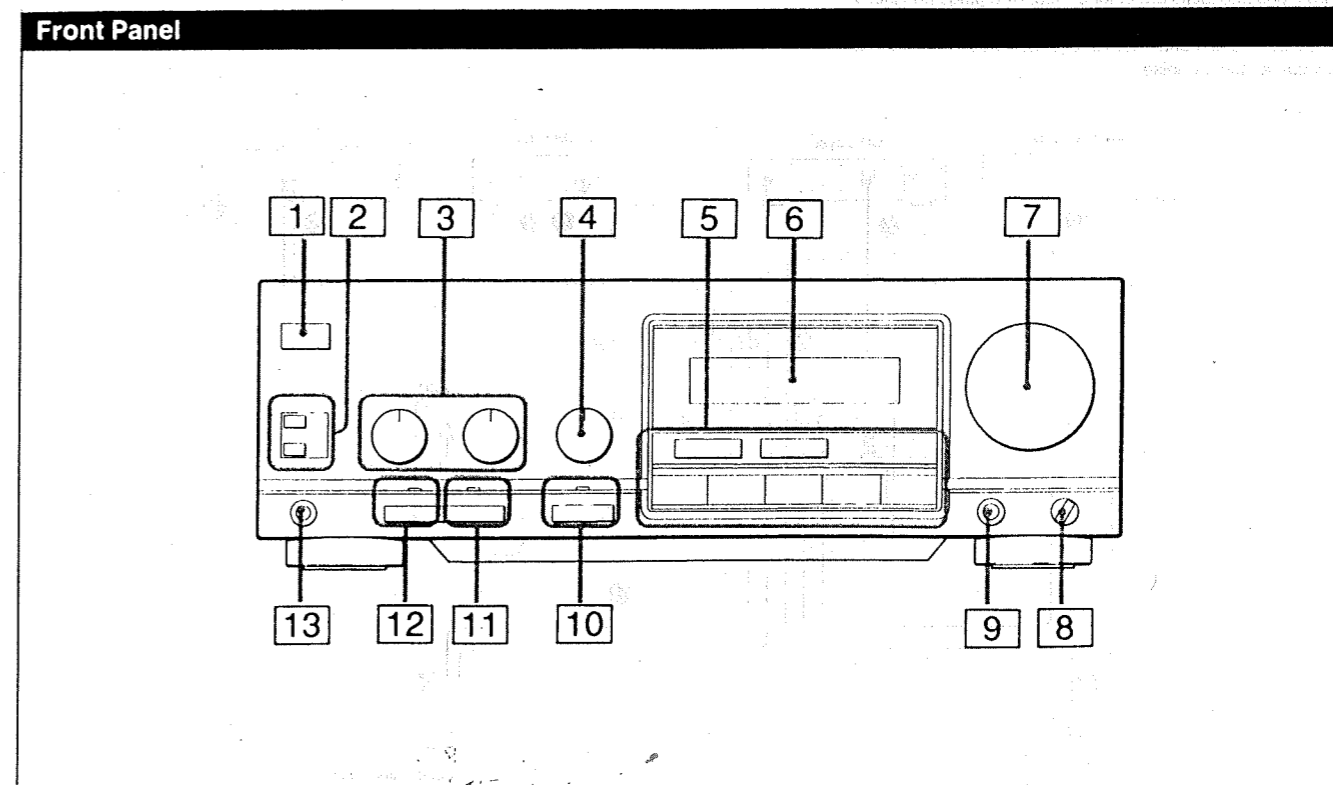
Section	Title	Page
	Specification	1
	Model Identification	2
1.	GENERAL	
	Parts Identification	3
	Connecting the System	4
2.	DIAGRAMS	
	2-1. IC Block Diagram	6
	2-2. Pin Functions	7
	2-3. Printed Wiring Boards	
	— Digital Audio Section	8
	2-4. Schematic Diagram	
	— Digital Audio Section	11
	2-5. Printed Wiring Boards	
	— Main AMP Section	15
	2-6. Schematic Diagram	
	— Main AMP Section	19
3.	EXPLODED VIEWS	22
4.	ELECTRICAL PARTS LIST	24

SAFETY-RELATED COMPONENT WARNING!!

COMPONENTS IDENTIFIED BY MARK Δ OR DOTTED LINE WITH MARK Δ ON THE SCHEMATIC DIAGRAMS AND IN THE PARTS LIST ARE CRITICAL TO SAFE OPERATION. REPLACE THESE COMPONENTS WITH SONY PARTS WHOSE PART NUMBERS APPEAR AS SHOWN IN THIS MANUAL OR IN SUPPLEMENTS PUBLISHED BY SONY.

SECTION 1
GENERAL

PARTS IDENTIFICATION

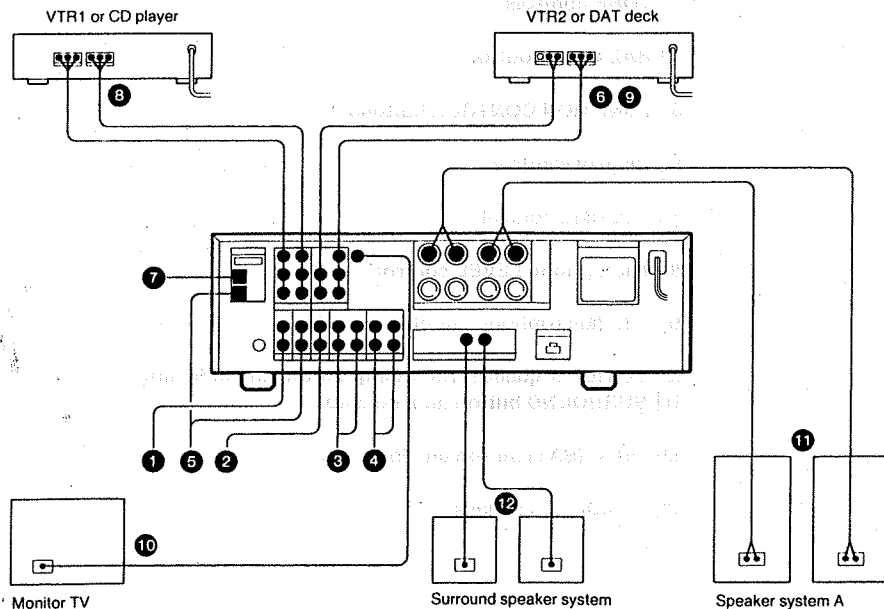
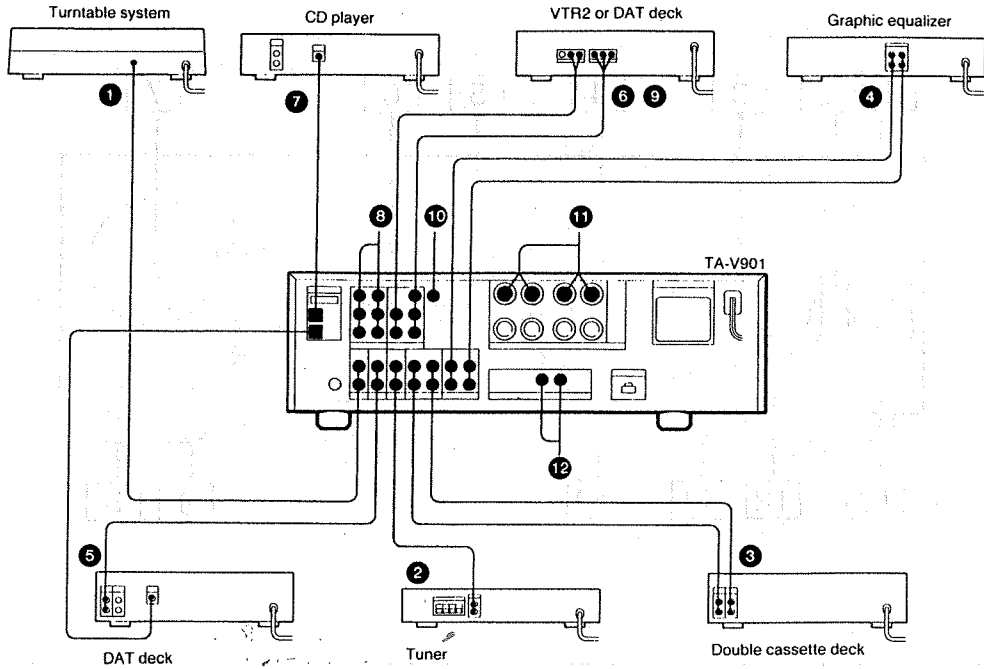


- 1 POWER switch
- 2 SPEAKERS selector
- 3 TONE controls
- 4 BALANCE control
- 5 FUNCTION CONTROL buttons
- 6 Display window
- 7 VOLUME control
- 8 Microphone LEVEL control
- 9 MIC (Microphone) input jack
- 10 EQ REC (Equalizer recording) button and indicator
- 11 SURROUND button and indicator
- 12 DBFB (SAT) button and indicator
- 13 HEADPHONES jack

CONNECTIONS

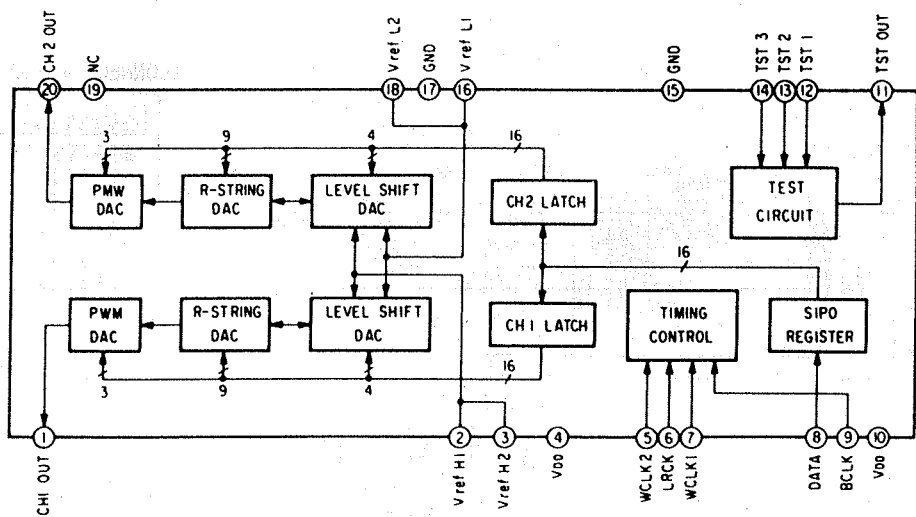
Notes on Connection

- Connect the AC power cord last. Make sure power is off.
- Cord plugs and jacks are color coded. Red plugs and jacks are for right channel (R) and white ones for left channel (L).
- Fully insert cable connectors into jacks. Loose connections may cause hum or noise.

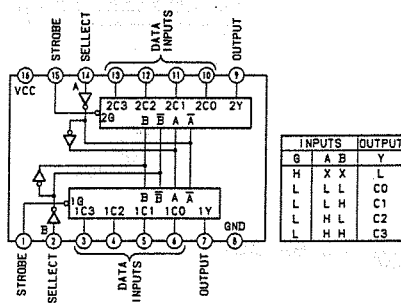


2-1. IC BLOCK DIAGRAM

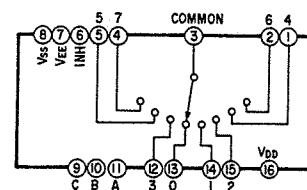
IC603 CXD1161P



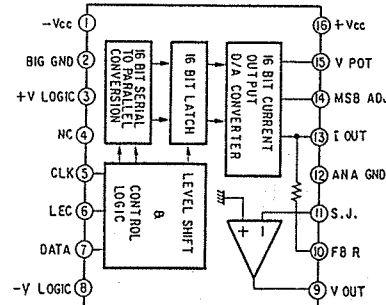
IC601 TC74HC153P



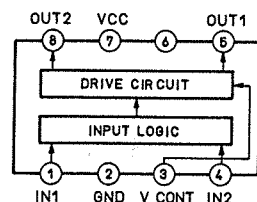
IC102, 103 M4051BP



IC606, 607 PCM56P-L



IC902 LB1639



2-2. PIN FUNCTION

• IC603 CXD1243P (DAS Board)

Pin No.	Pin Name	I/O	Description	Pin No.	Pin Name	I/O	Description
1	GD		Digital GND	21	VD		Digital 5V power
2			Not used	22	TS1	I	Test select 1
3	DIAN	I	Audio data output select ¹	23	TS2	I	Test select 2
4	S1	I	Input select 1 ²	24	XCLR	I	Reset input
5	S2	I	Input select 2 ²	25	RECO	O	Audio data output 2
6	GA		Analog GND	26	ADDT	O	Audio data output 1 ¹
7	R1		VCO CR	27	LRCK	O	LR clock (1FS)
8	VCOI	I	VCO input	28	BCK	O	Bit clock (64FS)
9	R2		VCO CR	29	MCK	O	Master clock (384FS)
10	CIA		VCO CR	30	ANDT	I	Audio data from DA converter ¹
11	CIB		VCO CR	31	GD		Digital GND
12	VCOO	I/O	VCO output	32	XTLO	O	XTL output
13	PHCO	O	Phase comparator output	33	XTLI	I	XTL input
14	PLREF	I/O	Not used	34	XLON	O	XTL oscillation control
15	PLVAR	I/O	Not used	35	MUTE	O	Audio mute
16	VA		Analog 5V power	36	RECM	I/O	Record mute
17	DREC	O	Direct output	37	FS1	O	FS information 1 ³
18	RX1	I	Input 1 ²	38	FS2	O	FS information 2 ³
19	RX2	I	Input 2 ²	39	EMP	O	H: de-emphasis on
20	RX3	I	Input 3 ²	40	VD		Digital +5V power

Function Table

1:

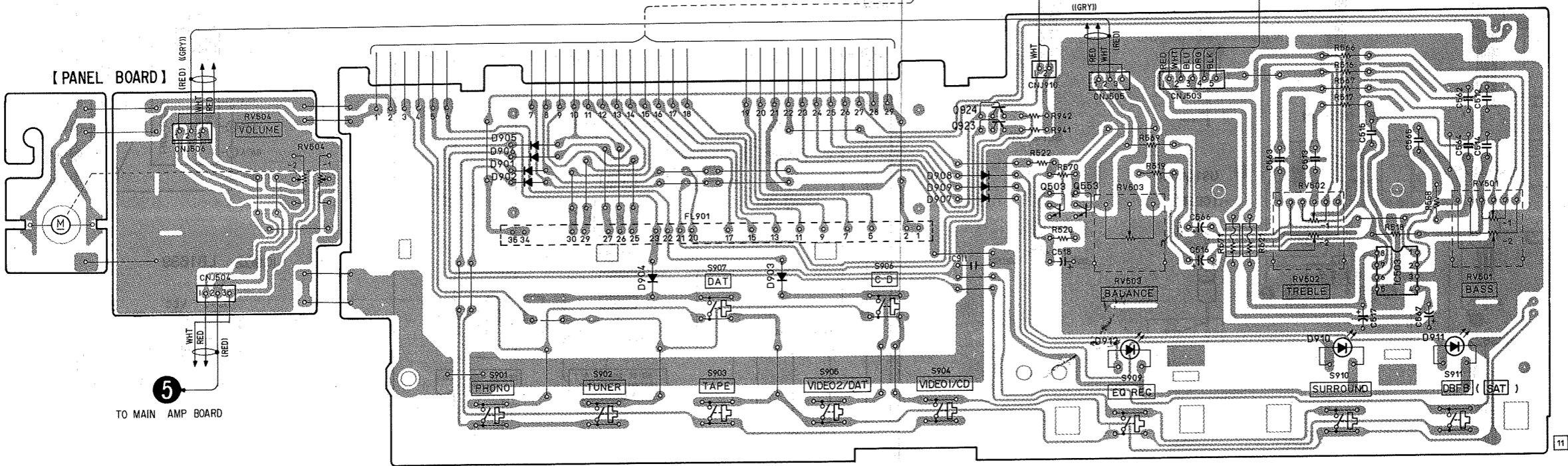
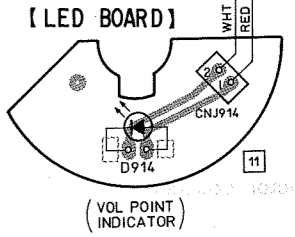
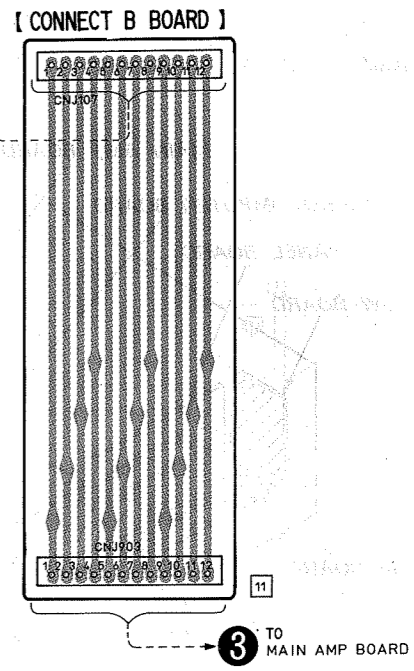
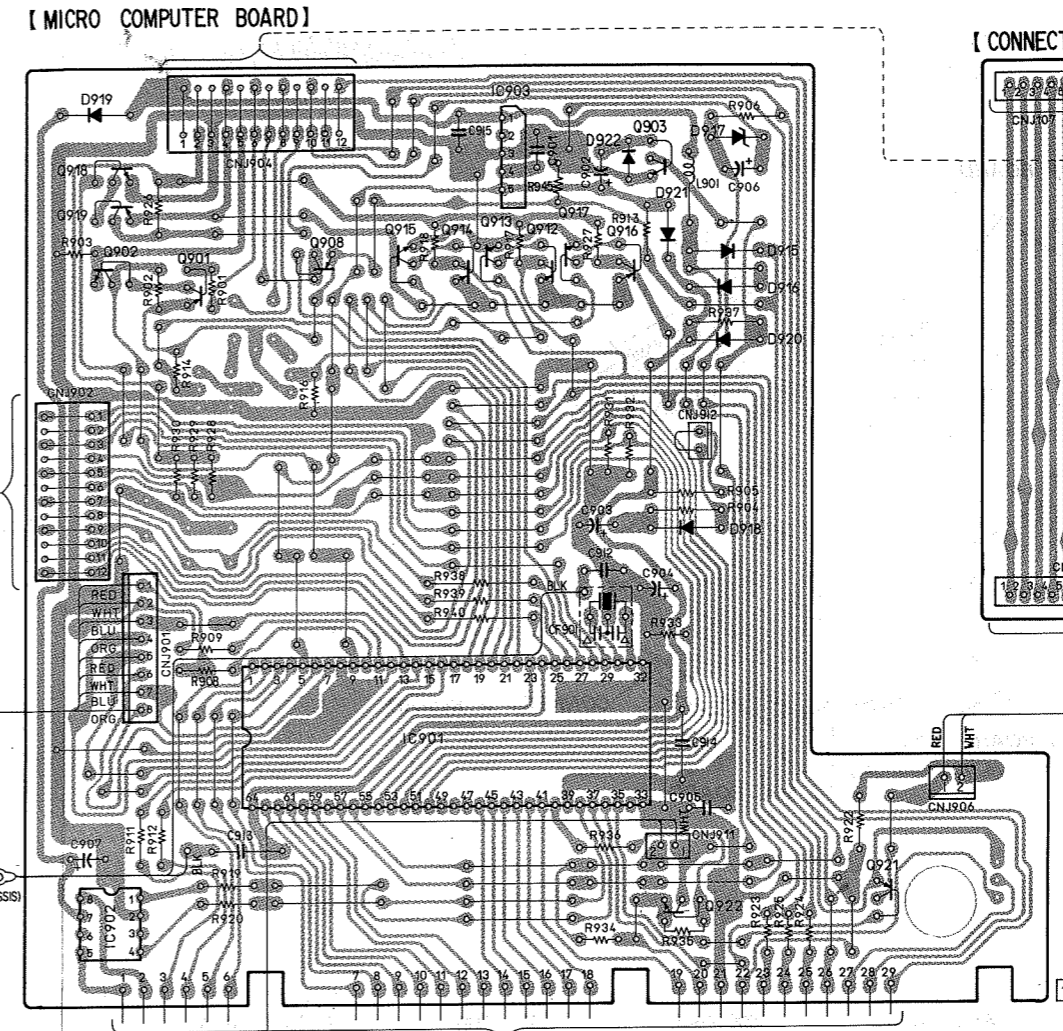
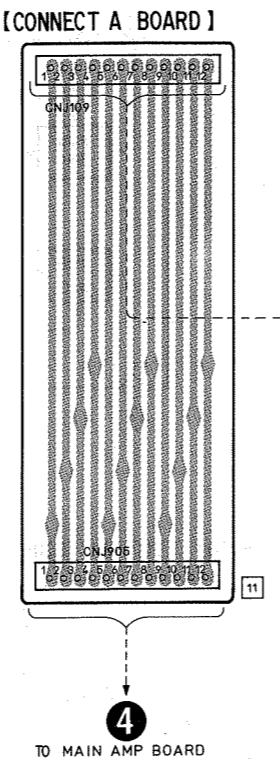
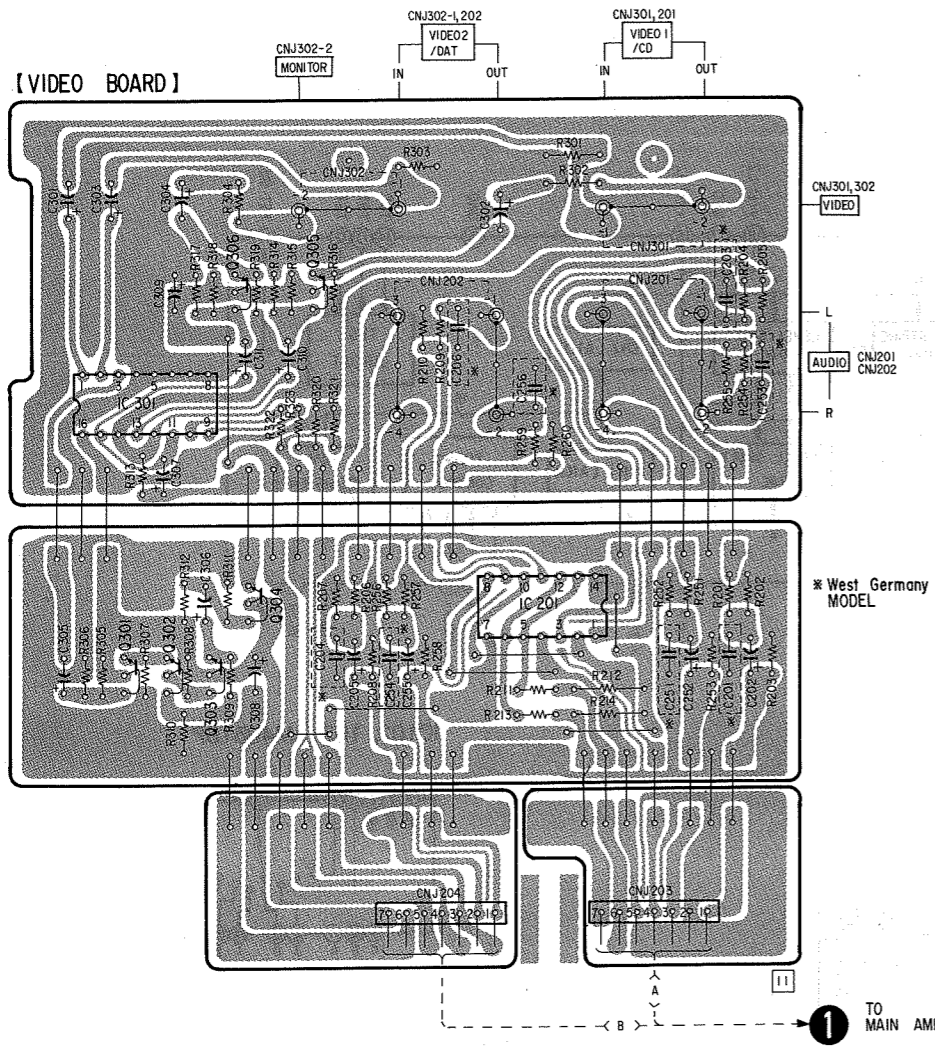
DIAN ^③	ADDT ^{②⑥}
L	ANDT ^{③⑦}
H	input data

2:

S1 ^④	S2 ^⑤	input
L	L	1 ^⑱
L	H	2 ^⑲
H	L	3 ^⑳
H	H	OFF

3:

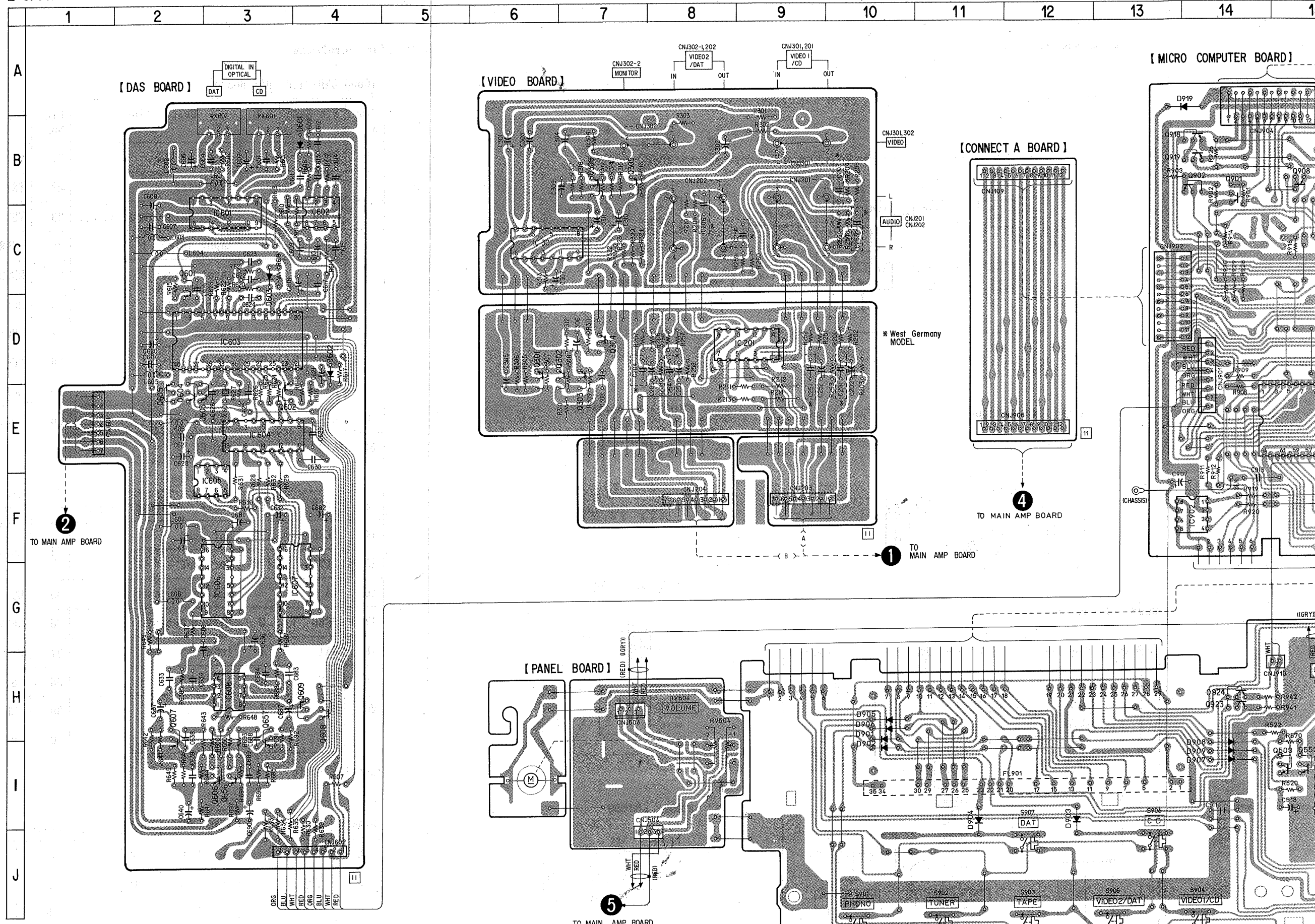
FS1 ^{③⑦}	FS2 ^{③⑧}	FS
L	L	44.1kHz
L	H	48kHz
H	L	—
H	H	32kHz



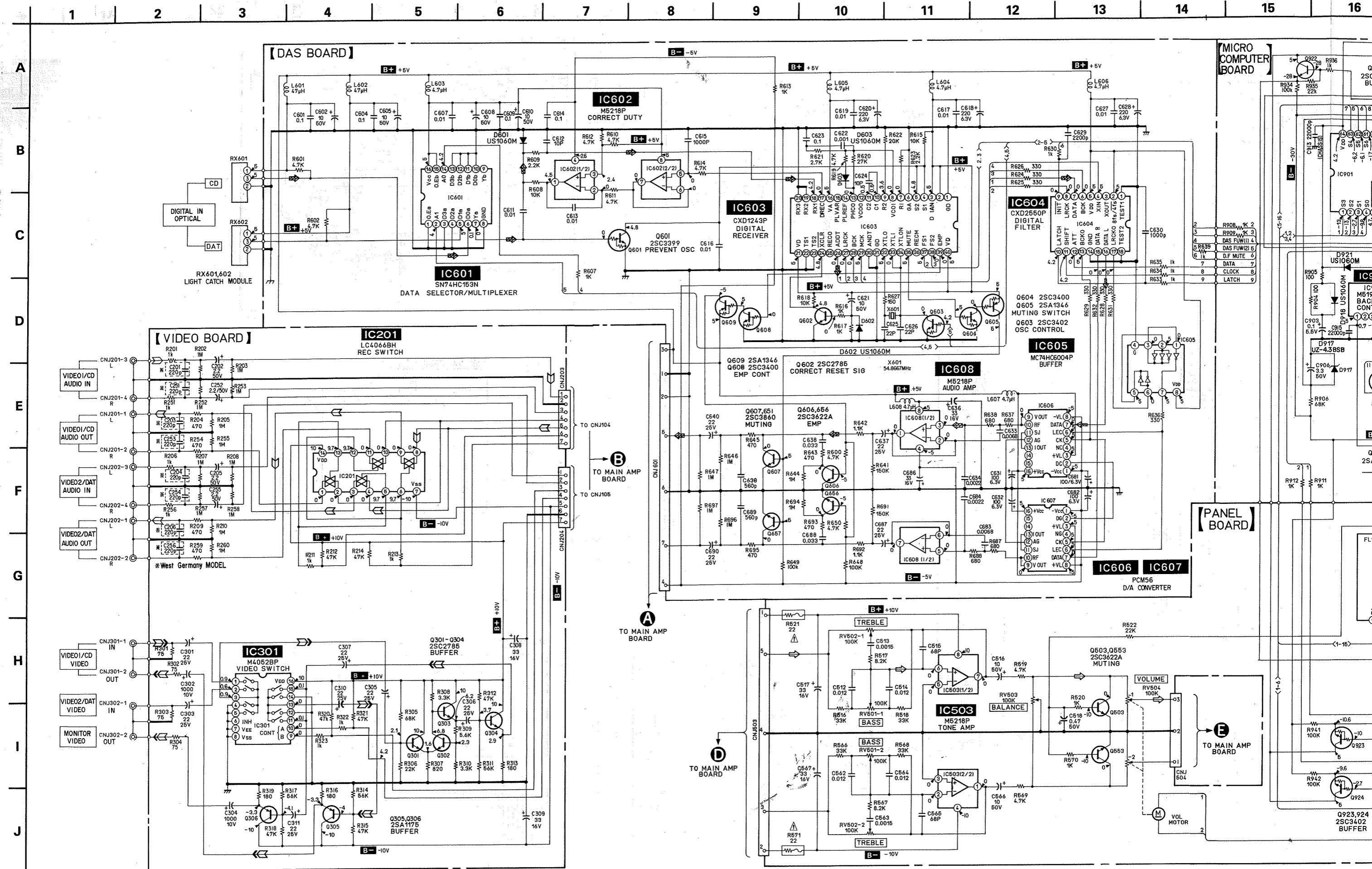
• Semiconductor Location

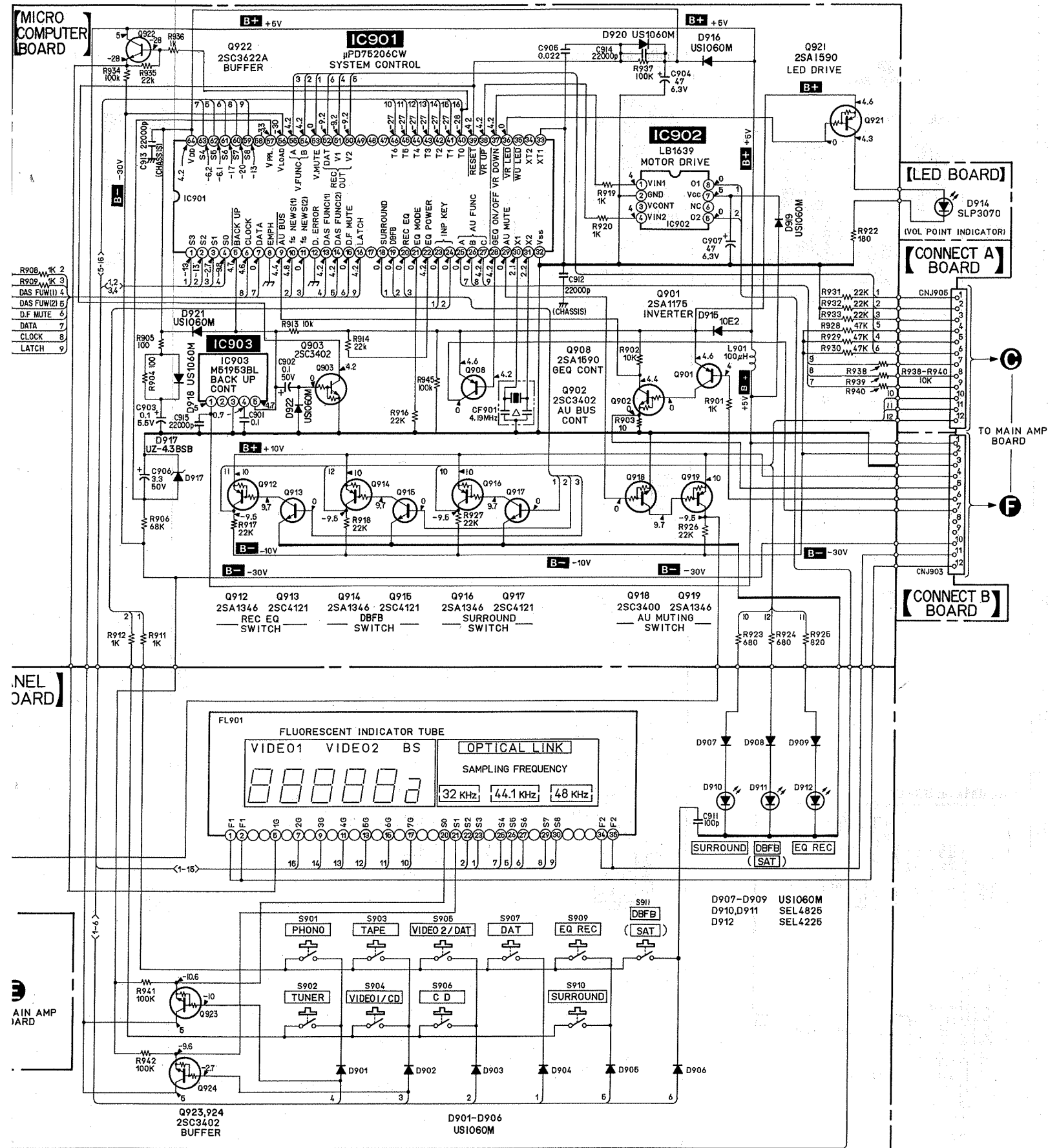
Ref. No.	Location	Ref. No.	Location
D601	B-4	Q301	D-6
D602	D-4	Q302	D-7
D603	C-3	Q303	D-7
D901	I-10	Q304	D-7
D902	I-10	Q305	B-7
D903	I-12	Q306	B-7
D904	I-11	Q503	I-15
D905	H-10	Q553	I-15
D906	H-10	Q601	C-2
D907	I-14	Q602	E-3
D908	I-14	Q603	E-2
D909	I-14	Q604	E-2
D910	J-17	Q605	E-2
D911	J-18	Q606	I-3
D912	J-15	Q607	H-2
D914	F-20	Q608	H-4
D915	B-17	Q609	H-4
D916	B-17	Q656	I-3
D917	B-17	Q657	H-3
D918	D-17	Q901	B-14
D919	A-14	Q902	B-14
D920	C-17	Q903	B-17
D921	B-17	Q908	B-15
D922	B-17	Q912	B-16
		Q913	B-16
IC201	D-9	Q914	B-16
IC301	C-6	Q915	B-15
IC503	I-18	Q916	B-17
IC601	C-3	Q917	B-16
IC602	C-4	Q918	B-14
IC603	D-3	Q919	B-14
IC604	E-3	Q921	F-18
IC605	F-3	Q922	F-17
IC606	G-3	Q923	H-14
IC607	G-4	Q924	H-14
IC608	H-3		
IC901	E-15		
IC902	F-14		
IC903	B-16		

Note:
 ● ○ — : parts extracted from the component side.



2-4. SCHEMATIC DIAGRAM —DIGITAL AUDIO SECTION—





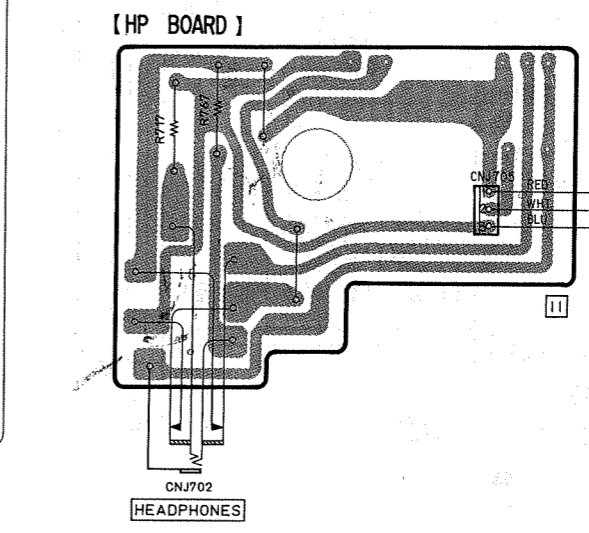
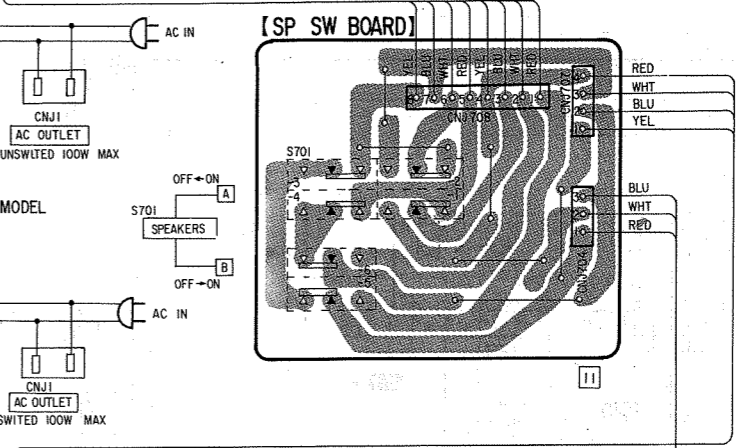
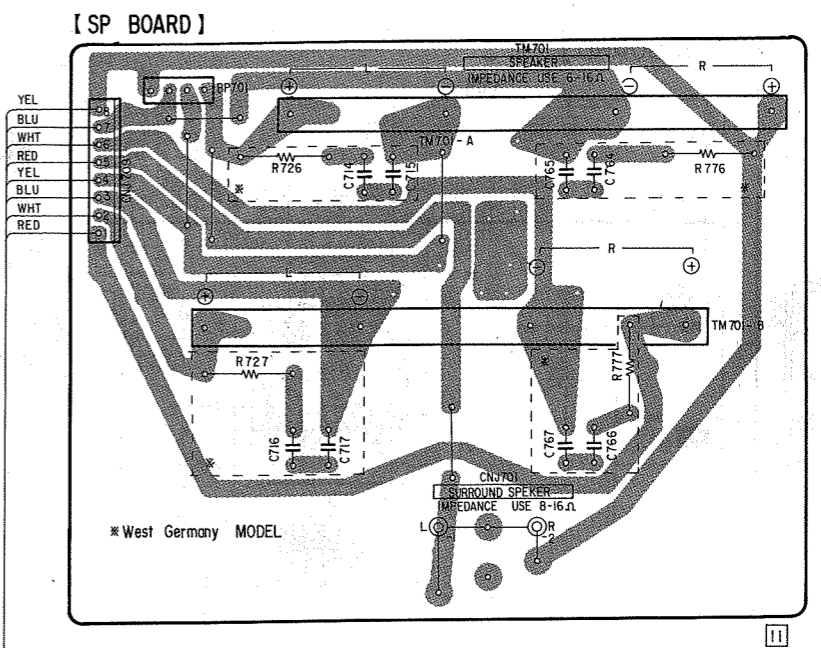
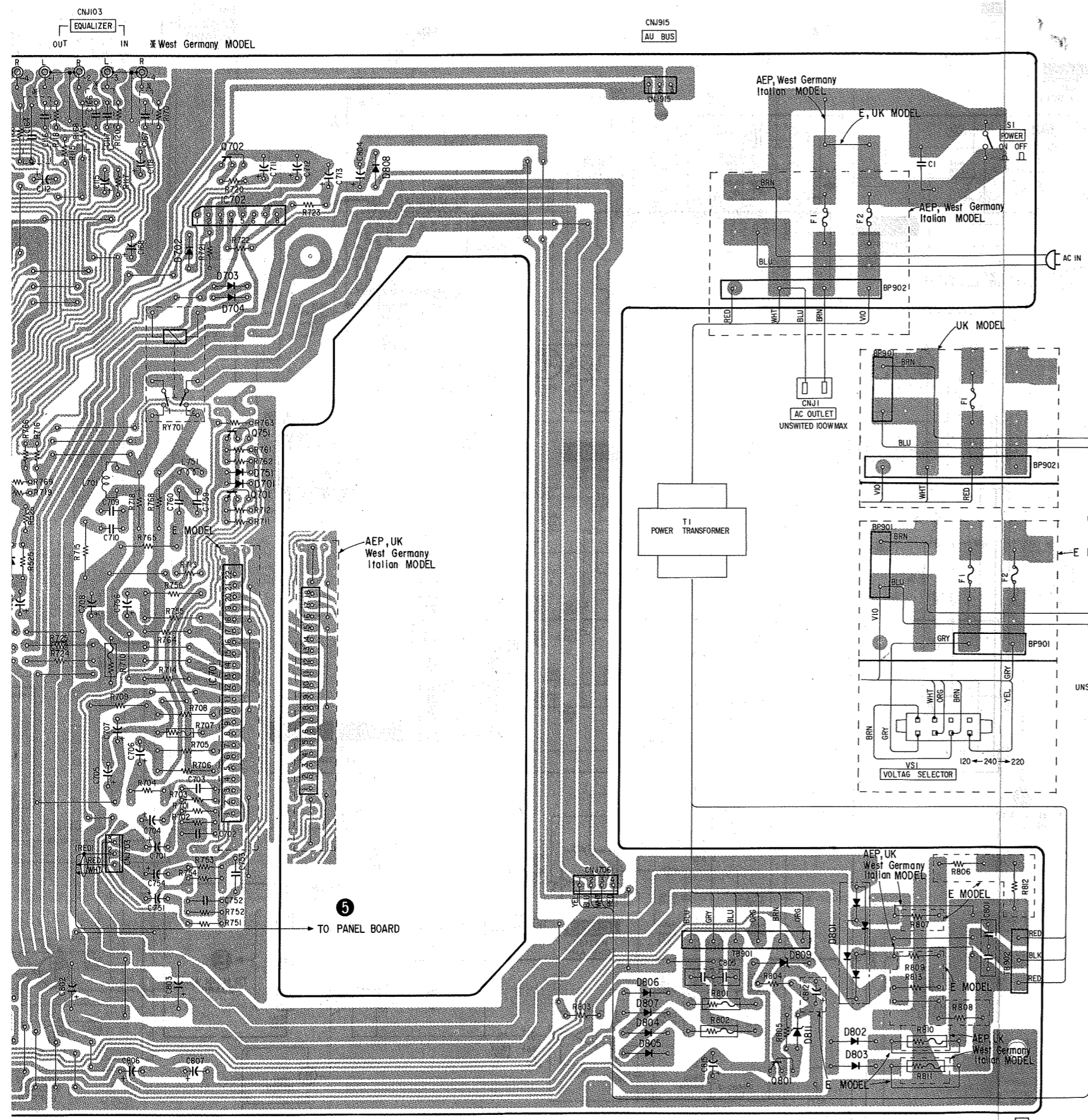
* caution on repairing the DAS board
 When repairing the DAS board, remove the shielding case. Since the chassis, which had been acting as ground, is disconnected at that time, connect a ground lead wire during repair.

Note:

- All capacitors are in μF unless otherwise noted. pF : $\mu\text{M}\text{F}$ 50WV or less are not indicated except for electrolytics and tantalums.
- All resistors are in Ω and $\frac{1}{4}\text{W}$ or less unless otherwise specified.
- Δ : internal component.
- $\text{---}\text{---}$: fusible resistor.

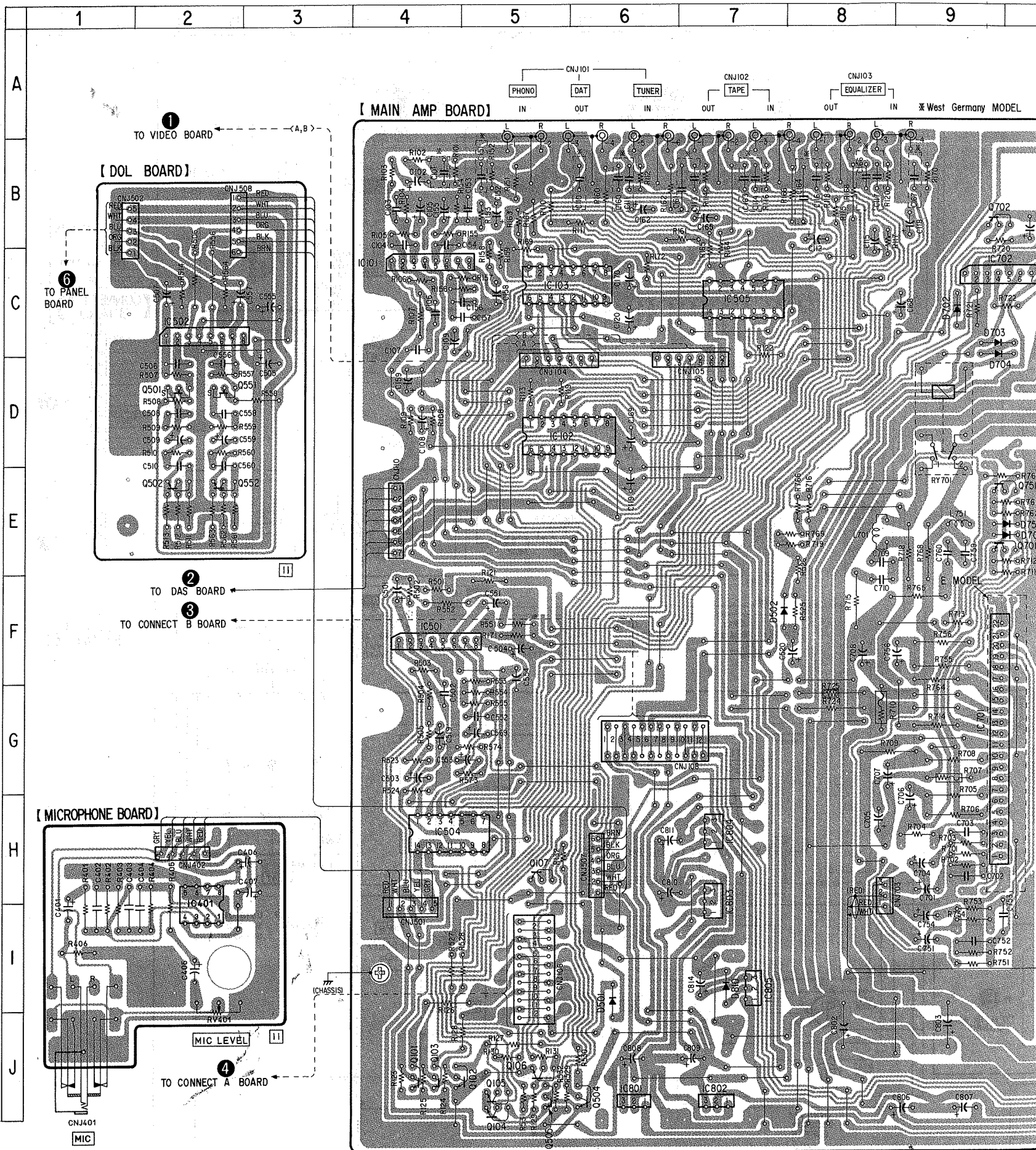
Note: The components identified by mark Δ or dotted line with mark Δ are critical for safety. Replace only with part number specified.

- Voltage and waveforms are dc with respect to ground under no-signal conditions.
- Voltages are taken with a VOM (Input impedance 10M Ω) Voltage variations may be noted due to normal production tolerances.
- Signal path.
 - $\text{---}\text{---}$: VIDEO SOUND
 - $\text{---}\text{---}$: VIDEO
 - $\text{---}\text{---}$: PHONO
 - $\text{---}\text{---}$: CD

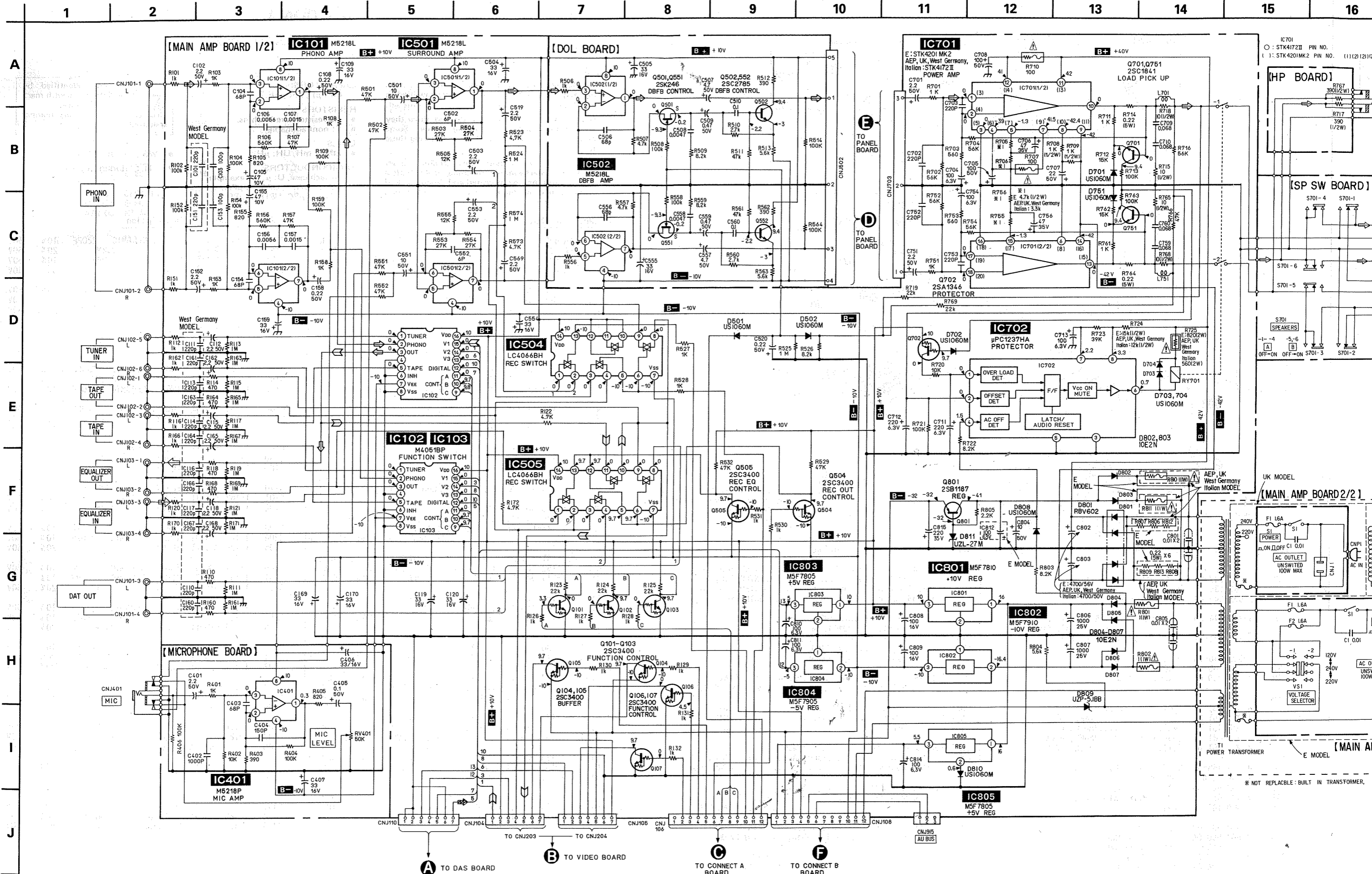


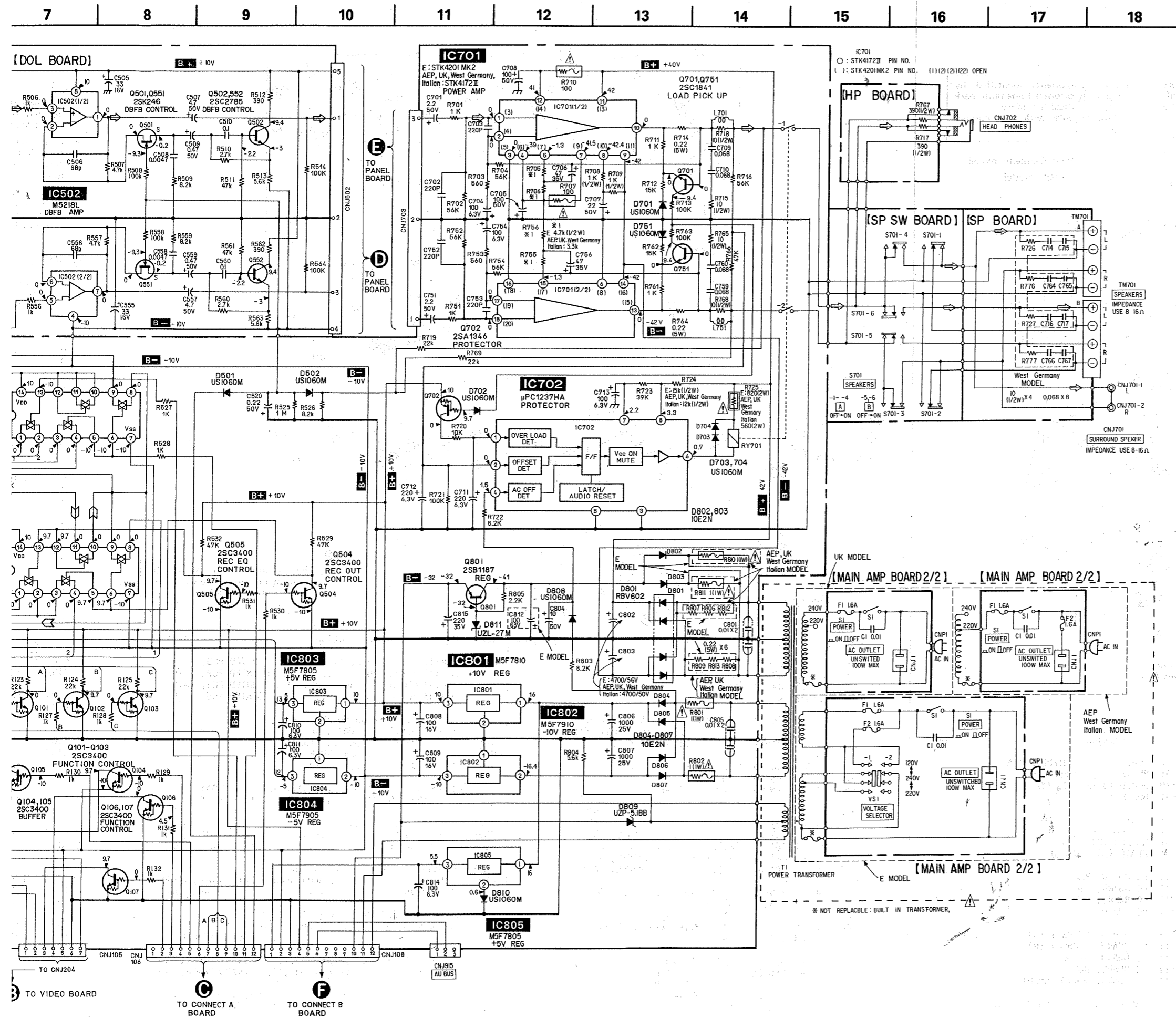
• Semiconductor Location

Ref. No.	Location
D501	J-6
D502	F-7
D701	E-10
D702	C-9
D703	D-9
D704	D-9
D751	E-10
D801	I-15
D802	J-15
D803	K-15
D504	J-13
D805	J-13
D806	J-13
D807	J-13
D808	B-11
D809	J-14
D810	I-7
D811	J-15
IC101	C-4
IC102	D-5
IC103	C-5
IC401	I-2
IC501	F-4
IC502	C-2
IC504	H-4
IC505	C-7
IC701	G-9
IC702	C-9
IC801	J-6
IC802	J-7
IC803	I-7
IC804	H-7
IC805	I-7
Q101	J-4
Q102	J-5
Q103	J-4
Q104	K-5
Q105	J-5
Q106	J-6
Q107	H-5
Q501	D-2
Q502	E-2
Q504	J-6
Q505	J-5
Q551	D-2
Q552	E-2
Q701	E-10
Q702	B-9
Q751	E-9
Q801	J-14



Note:
 ● ○ — : parts extracted from the component side.





- Note:**
- All capacitors are in μF unless otherwise noted. pF : μF 50VV or less are not indicated except for electrolytics and tantalums.
 - All resistors are in Ω and $\frac{1}{4}\text{W}$ or less unless otherwise specified.
 - \square : nonflammable resistor.
 - --- : fusible resistor.

Note: The components identified by mark \triangle or dotted line with mark \triangle are critical for safety. Replace only with part number specified.

- Voltage and waveforms are dc with respect to ground under no-signal conditions.
- no mark: PHONO
- Voltages are taken with a VOM (Input impedance 10M Ω) Voltage variations may be noted due to normal production tolerances.
- Signal path.
- \rightarrow : PHONO \rightarrow : VIDEO SOUND
- IC701 PIN NO.
 \circ : STK4172 II
 $()$: STK4201MK2 (1) (2) (21) (22) OPEN

SECTION 3 EXPLODED VIEWS

NOTE:

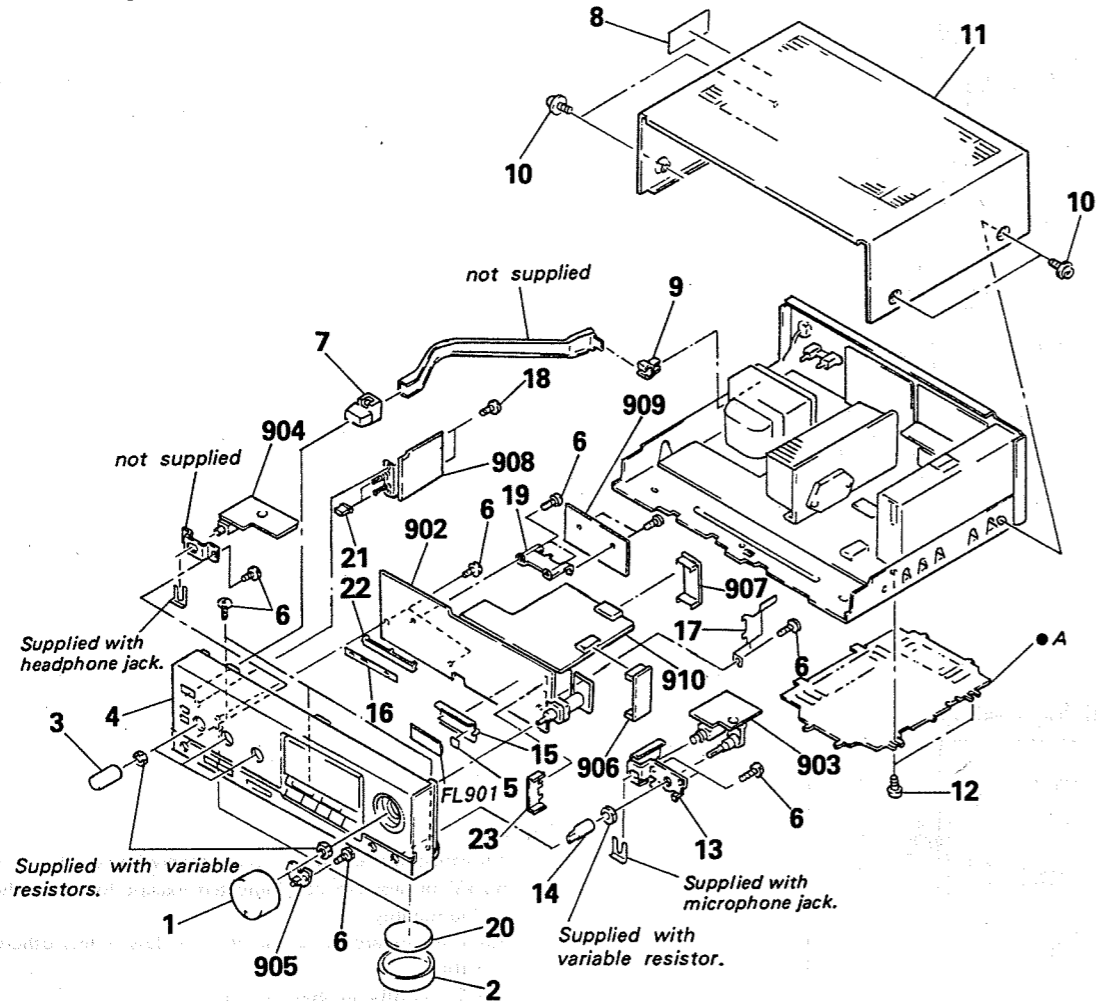
- The mechanical parts with no reference number in the exploded views are not supplied.
- The construction parts of an assembled part are indicated with a collation number in the remark column.
- Items marked "★" are not stocked since they are seldom required for routine service. Some delay should be anticipated when ordering these items.

- Due to standardization, parts with part number suffix -XX and -X may be different from the parts specified in the components used on the set.
- Color Indication of Appearance Parts Example:
(RED) ... KNOB, BALANCE (WHITE)
↑ Cabinet's Color ↑ Parts Color

The components identified by mark or dotted line with mark are critical for safety. Replace only with part number specified.

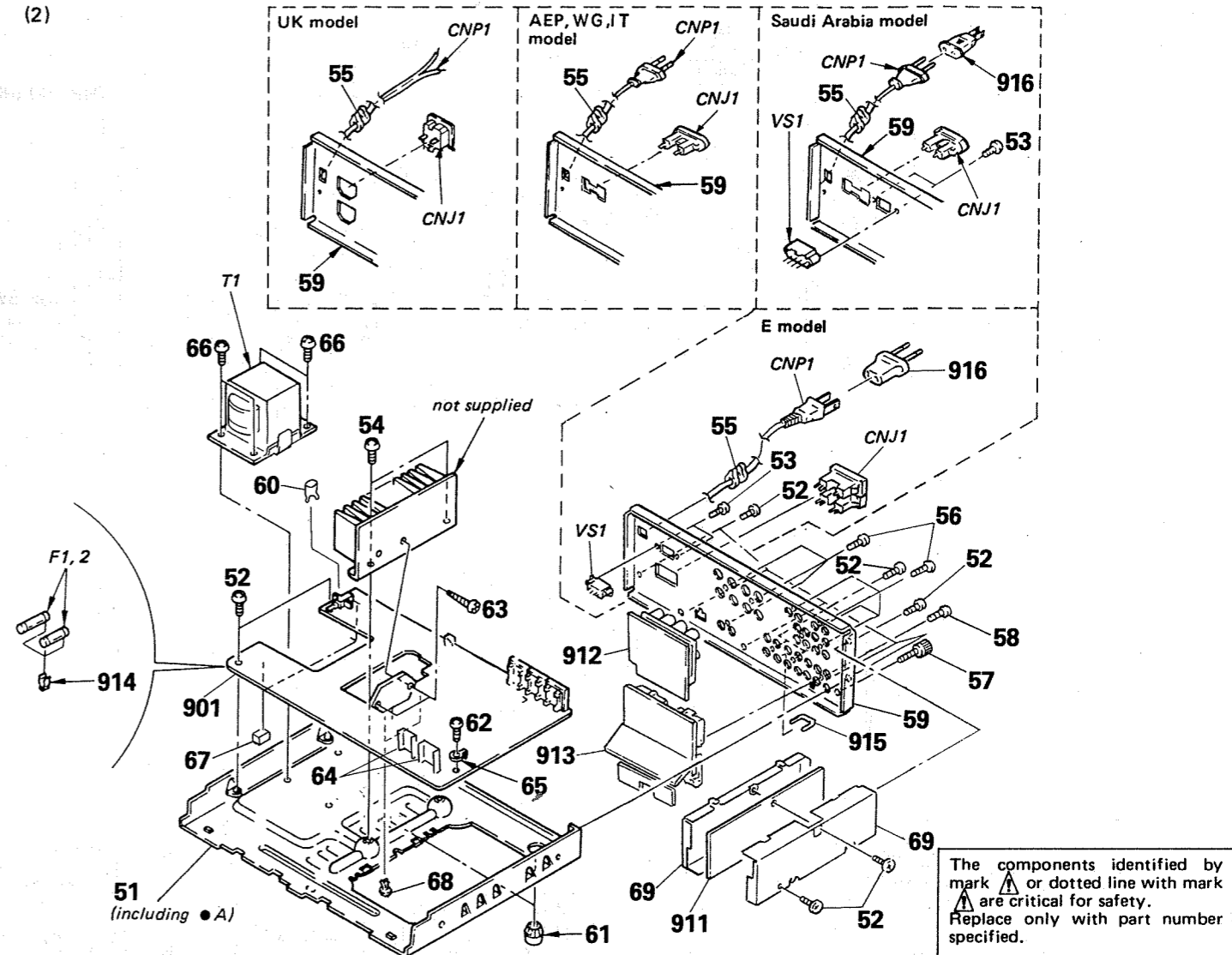
- WG: West Germany model
- IT: Italian model

(1)



No.	Part No.	Description	Remarks	No.	Part No.	Description	Remarks
1	4-925-121-01	KNOB (V2)		16	*4-928-410-01	PLATE, LIGHT INTERCEPTION	
2	X-4917-252-1	PLATE (LEG) ASSY, ORNAMENTAL		17	*4-928-412-01	PLATE (P), SHIELD	
3	4-925-188-01	KNOB (TONE)		18	7-685-646-79	SCREW +BVTP 3X8 TYPE2 N-S	
4	X-4917-269-1	(AEP,WG,UK,IT)....PANEL ASSY, FRONT		19	*4-930-818-01	BRACKET (D)	
	X-4917-272-1	(E,Saudi Arabia)...PANEL ASSY, FRONT		20	4-928-401-01	FELT	
5	*4-921-941-01	CUSHION (FL)		21	4-930-802-01	BUTTON (SP)	
6	7-685-134-19	SCREW +BTP 2.6X8 TYPE2 N-S		22	*4-925-193-01	HOLDER (D), LED	
7	4-921-919-01	BUTTON (P)		23	*4-928-414-01	PLATE (M), SHIELD	
8	*4-930-805-01	(E,Saudi Arabia)...LABEL, MODEL NUMBER		902	*1-628-636-11	PC BOARD, PANEL	
	*3-703-079-21	(UK)....LABEL CAUTION (BACK)		903	*1-628-639-11	PC BOARD, MIC	
9	4-866-342-00	JOINT (B), KNOB		904	*1-628-638-11	PC BOARD, H.P.	
10	3-704-366-01	SCREW (CASE) (M3X8)		905	*1-628-643-11	PC BOARD, LED	
11	4-919-378-31	CASE		906	*1-628-641-11	PC BOARD, CONNECT (A)	
12	7-682-547-04	SCREW +BVTT 3X6 (S)		907	*1-628-642-11	PC BOARD, CONNECT (B)	
13	*4-928-413-01	BRACKET (MIC)		908	*1-631-386-11	PC BOARD, SP SW	
14	4-921-921-01	KNOB (M)		909	*1-631-385-11	PC BOARD, DOL	
15	*4-923-103-01	HOLDER, FL TUBE		910	*1-628-637-11	PC BOARD, MICRO COMPUTER	
				FL901	1-519-490-11	INDICATOR TUBE, FLUORESCENT	

(2)



No.	Part No.	Description	Remarks	No.	Part No.	Description	Remarks
51	*X-4917-246-1	CHASSIS ASSY		901	*A-4333-398-A	(AEP,IT).....MOUNTED PCB, MAIN	
52	7-682-547-04	SCREW +BVTT 3X6 (S)			*A-4333-399-A	(UK).....MOUNTED PCB, MAIN	
53	7-685-134-19	SCREW +BTP 2.6X8 TYPE2 N-S			*A-4333-400-A	(E,Saudi Arabia)...MOUNTED PCB, MAIN	
54	7-682-548-04	SCREW +BVTT 3X8 (S)			*A-4333-401-A	(WG).....MOUNTED PCB, MAIN	
55	*3-703-244-00	(AEP,WG,UK,Saudi Arabia,IT) ...BUSHING (2104), CORD		911	*A-4333-404-A	MOUNTED PCB, DAS	
	3-703-571-11	(E)....BUSHING (S) (4516), CORD		912	*1-631-382-11	PC BOARD, SP	
56	7-685-646-79	SCREW +BVTP 3X8 TYPE2 N-S		913	*1-631-384-11	PC BOARD, VIDEO	
57	3-706-165-00	SCREW		914	*1-533-213-31	HOLDER, FUSE	
58	7-621-849-00	SCREW, TAPPING		915	1-535-706-11	PLUG, JUMPER	
59	*4-928-481-01	(AEP).....PANEL, BACK		916	1-506-409-11	(Saudi Arabia)...ADAPTOR, CONVERSION	
	*4-928-481-21	(UK).....PANEL, BACK			1-526-565-00	(E).....AC PLUG ADAPTOR	
	*4-928-481-31	(E).....PANEL, BACK		CNJ1	1-526-751-00	(UK).....OUTLET, AC	
	*4-928-481-41	(WG).....PANEL, BACK		CNJ1	1-526-794-11	(AEP,WG,Saudi Arabia,IT)...OUTLET, AC	
	*4-928-481-51	(Saudi Arabia)...PANEL, BACK		CNJ1	1-526-882-00	(E).....OUTLET, AC (2 GANG)	
	*4-928-481-61	(IT).....PANEL, BACK		CNP1	1-551-188-XX	(E)...CORD, POWER	
60	*4-875-455-31	COVER (DIA. 20), CAPACITOR		CNP1	1-555-750-00	(AEP,WG,Saudi Arabia,IT)...CORD, POWER	
61	*X-4917-254-1	FOOT ASSY		CNP1	1-556-035-00	(UK).....CORD, POWER	
62	7-682-547-09	SCREW +BV 3X6, S TIGHT		F1	1-532-259-00	FUSE, TIME-LAG T1.6A	
63	7-685-650-79	SCREW +BVTP 3X16 TYPE2 IT-3		F2	1-532-259-00	(AEP,WG,E,Saudi Arabia,IT) ...FUSE, TIME-LAG T1.6A	
64	*3-309-144-21	HEAT SINK		T1	1-449-762-11	(AEP,WG,UK).....TRANSFORMER, POWER	
65	4-870-539-00	PLATE, GROUND		T1	1-449-763-11	(E,Saudi Arabia,IT)...TRANSFORMER, POWER	
66	7-682-560-04	SCREW +BVTT 4X6 (S)		VS1	1-570-307-11	(E,Saudi Arabia)..SWITCH, VOLTAGE CHANGE (VOLTAGE SELECTOR)	
67	9-911-843-XX	RUBBER, CUSHION					
68	4-917-239-01	RIVET, NYLON					
69	*4-930-804-01	PLATE, SHIELD					

SECTION 4 ELECTRICAL PARTS LIST

NOTE:

- Due to standardization, replacements in the parts list may be different from the parts specified in the diagrams or the components used on the set.
- Items marked "*" are not stocked since they are seldom required for routine service. Some delay should be anticipated when ordering these items.
- If there are two or more same circuits in a set such as a stereophonic machine, only typical circuit parts may be indicated and capacitors and resistors in other same circuits may be omitted.

CAPACITORS:
MF: μ F, PF: μ F.

RESISTORS
• All resistors are in ohms.
• F: nonflammable

COILS
• MMH: mH, UH: μ H

SEMICONDUCTORS
In each case, U: μ , for example:
UA...: μ A..., UPA...: μ PA...,
UPC...: μ PC, UPD...: μ PD...

The components identified by mark Δ or dotted line with mark Δ are critical for safety. Replace only with part number specified.

- WG: West Germany model
- IT: Italian model

Ref.No.	Part No.	Description
901	*A-4333-398-A	(AEP,IT).....MOUNTED PCB, MAIN
	*A-4333-399-A	(UK).....MOUNTED PCB, MAIN
	*A-4333-400-A	(E,Saudi Arabia)....MOUNTED PCB, MAIN
	*A-4333-401-A	(WG).....MOUNTED PCB, MAIN
902	*1-628-636-11	PC BOARD, PANEL
903	*1-628-639-11	PC BOARD, MIC
904	*1-628-638-11	PC BOARD, H.P.
905	*1-628-643-11	PC BOARD, LED
906	*1-628-641-11	PC BOARD, CONNECT (A)
907	*1-628-642-11	PC BOARD, CONNECT (B)
908	*1-631-386-11	PC BOARD, SP SW
909	*1-631-385-11	PC BOARD, DOL
910	*1-628-637-11	PC BOARD, MICRO COMPUTER
911	*A-4333-404-A	MOUNTED PCB, DAS
912	*1-631-382-11	PC BOARD, SP
913	*1-631-384-11	PC BOARD, VIDEO
914	*1-533-213-31	HOLDER, FUSE
915	1-535-706-11	PLUG, JUMPER
916	Δ 1-506-409-11	(Saudi Arabia)....ADAPTOR, CONVERSION
	Δ 1-526-565-00	(E).....AC PLUG ADAPTOR
BP701	*1-508-879-00	BASE POST
BP901	*1-535-139-00	BASE POST 22MM (10MM PITCH) 2P
BP902	1-535-141-21	(AEP,UK,WG,IT) ...BASE POST 22MM (10MM PITCH) 4P
C1	Δ 1-161-744-00	CERAMIC 0.01MF 400V
C101	1-162-286-31	(WG)...CERAMIC 220PF 10% 50V
C102	1-124-925-11	ELECT 2.2MF 20% 50V
C103	1-162-282-31	CERAMIC 100PF 10% 50V
C104	1-162-219-31	CERAMIC 68PF 5% 50V
C105	1-124-446-11	ELECT 47MF 20% 10V
C106	1-130-480-00	MYLAR 0.0056MF 5% 50V
C107	1-130-473-00	MYLAR 0.0015MF 5% 50V
C108	1-124-464-11	ELECT 0.22MF 20% 50V
C109	1-124-963-11	ELECT 33MF 20% 16V
C110	1-162-286-31	(WG)...CERAMIC 220PF 10% 50V
C111	1-162-286-31	(WG)...CERAMIC 220PF 10% 50V
C112	1-124-925-11	ELECT 2.2MF 20% 50V
C113	1-162-286-31	(WG)...CERAMIC 220PF 10% 50V
C114	1-162-286-31	(WG)...CERAMIC 220PF 10% 50V
C115	1-124-925-11	ELECT 2.2MF 20% 50V
C116	1-162-286-31	(WG)...CERAMIC 220PF 10% 50V
C117	1-162-286-31	(WG)...CERAMIC 220PF 10% 50V
C118	1-124-925-11	ELECT 2.2MF 20% 50V
C119	1-124-963-11	ELECT 33MF 20% 16V
C120	1-124-963-11	ELECT 33MF 20% 16V

Ref.No.	Part No.	Description
C151	1-162-286-31	(WG)...CERAMIC 220PF 10% 50V
C152	1-124-925-11	ELECT 2.2MF 20% 50V
C153	1-162-282-31	CERAMIC 100PF 10% 50V
C154	1-162-219-31	CERAMIC 68PF 5% 50V
C155	1-124-446-11	ELECT 47MF 20% 10V
C156	1-130-480-00	MYLAR 0.0056MF 5% 50V
C157	1-130-473-00	MYLAR 0.0015MF 5% 50V
C158	1-124-464-11	ELECT 0.22MF 20% 50V
C159	1-124-963-11	ELECT 33MF 20% 16V
C160	1-162-286-31	(WG)...CERAMIC 220PF 10% 50V
C161	1-162-286-31	(WG)...CERAMIC 220PF 10% 50V
C162	1-124-925-11	ELECT 2.2MF 20% 50V
C163	1-162-286-31	(WG)...CERAMIC 220PF 10% 50V
C164	1-162-286-31	(WG)...CERAMIC 220PF 10% 50V
C165	1-124-925-11	ELECT 2.2MF 20% 50V
C166	1-162-286-31	(WG)...CERAMIC 220PF 10% 50V
C167	1-162-286-31	(WG)...CERAMIC 220PF 10% 50V
C168	1-124-925-11	ELECT 2.2MF 20% 50V
C169	1-124-963-11	ELECT 33MF 20% 16V
C170	1-124-963-11	ELECT 33MF 20% 16V
C201	1-162-286-31	(WG)...CERAMIC 220PF 10% 50V
C202	1-124-925-11	ELECT 2.2MF 20% 50V
C203	1-162-286-31	(WG)...CERAMIC 220PF 10% 50V
C204	1-162-286-31	(WG)...CERAMIC 220PF 10% 50V
C205	1-124-925-11	ELECT 2.2MF 20% 50V
C206	1-162-286-31	(WG)...CERAMIC 220PF 10% 50V
C251	1-162-286-31	(WG)...CERAMIC 220PF 10% 50V
C252	1-124-925-11	ELECT 2.2MF 20% 50V
C253	1-162-286-31	(WG)...CERAMIC 220PF 10% 50V
C254	1-162-286-31	(WG)...CERAMIC 220PF 10% 50V
C255	1-124-925-11	ELECT 2.2MF 20% 50V
C256	1-162-286-31	(WG)...CERAMIC 220PF 10% 50V
C301	1-126-233-11	ELECT 22MF 20% 25V
C302	1-124-559-51	ELECT 1000MF 20% 10V
C303	1-126-233-11	ELECT 22MF 20% 25V
C304	1-124-559-51	ELECT 1000MF 20% 10V
C305	1-126-233-11	ELECT 22MF 20% 25V
C306	1-126-233-11	ELECT 22MF 20% 25V
C307	1-126-233-11	ELECT 22MF 20% 25V
C308	1-124-963-11	ELECT 33MF 20% 16V
C309	1-124-963-11	ELECT 33MF 20% 16V
C310	1-126-233-11	ELECT 22MF 20% 25V
C311	1-126-233-11	ELECT 22MF 20% 25V
C401	1-124-925-11	ELECT 2.2MF 20% 50V
C402	1-162-294-31	CERAMIC 0.001MF 10% 50V
C403	1-162-219-31	CERAMIC 68PF 5% 50V

Ref.No.	Part No.	Description
C404	1-162-284-31	CERAMIC 150PF 10% 50V
C405	1-124-463-00	ELECT 0.1MF 20% 50V
C406	1-124-963-11	ELECT 33MF 20% 16V
C407	1-124-963-11	ELECT 33MF 20% 16V
C501	1-123-875-11	ELECT 10MF 20% 50V
C502	1-164-042-11	CERAMIC 6PF 0.5PF 50V
C503	1-124-925-11	ELECT 2.2MF 20% 50V
C504	1-124-963-11	ELECT 33MF 20% 16V
C505	1-124-963-11	ELECT 33MF 20% 16V
C506	1-162-219-31	CERAMIC 68PF 5% 50V
C507	1-124-927-11	ELECT 4.7MF 20% 50V
C508	1-130-479-00	MYLAR 0.0047MF 5% 50V
C509	1-124-902-00	ELECT 0.47MF 20% 50V
C510	1-136-165-00	FILM 0.1MF 5% 50V
C512	1-136-154-00	FILM 0.012MF 5% 50V
C513	1-130-473-00	MYLAR 0.0015MF 5% 50V
C514	1-136-154-00	FILM 0.012MF 5% 50V
C515	1-164-066-11	CERAMIC 68PF 5% 50V
C516	1-123-875-11	ELECT 10MF 20% 50V
C517	1-124-963-11	ELECT 33MF 20% 16V
C518	1-124-465-00	ELECT 0.47MF 20% 50V
C519	1-124-925-11	ELECT 2.2MF 20% 50V
C520	1-124-464-11	ELECT 0.22MF 20% 50V
C551	1-123-875-11	ELECT 10MF 20% 50V
C552	1-164-042-11	CERAMIC 6PF 0.5PF 50V
C553	1-124-925-11	ELECT 2.2MF 20% 50V
C554	1-124-963-11	ELECT 33MF 20% 16V
C555	1-124-963-11	ELECT 33MF 20% 16V
C556	1-162-219-31	CERAMIC 68PF 5% 50V
C557	1-124-927-11	ELECT 4.7MF 20% 50V
C558	1-130-479-00	MYLAR 0.0047MF 5% 50V
C559	1-124-902-00	ELECT 0.47MF 20% 50V
C560	1-136-165-00	FILM 0.1MF 5% 50V
C562	1-136-154-00	FILM 0.012MF 5% 50V
C563	1-130-473-00	MYLAR 0.0015MF 5% 50V
C564	1-136-154-00	FILM 0.012MF 5% 50V
C565	1-164-066-11	CERAMIC 68PF 5% 50V
C566	1-123-875-11	ELECT 10MF 20% 50V
C567	1-124-963-11	ELECT 33MF 20% 16V
C569	1-124-925-11	ELECT 2.2MF 20% 50V
C601	1-136-165-00	FILM 0.1MF 5% 50V
C602	1-123-875-11	ELECT 10MF 20% 50V
C604	1-136-165-00	FILM 0.1MF 5% 50V
C605	1-123-875-11	ELECT 10MF 20% 50V
C607	1-136-153-00	FILM 0.01MF 5% 50V
C608	1-123-875-11	ELECT 10MF 20% 50V
C609	1-136-165-00	FILM 0.1MF 5% 50V
C610	1-123-875-11	ELECT 10MF 20% 50V
C611	1-136-153-00	FILM 0.01MF 5% 50V
C612	1-164-019-11	CERAMIC 10PF 0.5PF 50V
C613	1-136-153-00	FILM 0.01MF 5% 50V
C614	1-136-165-00	FILM 0.1MF 5% 50V
C615	1-130-471-00	MYLAR 0.001MF 5% 50V
C616	1-136-153-00	FILM 0.01MF 5% 50V
C617	1-136-153-00	FILM 0.01MF 5% 50V
C618	1-126-176-11	ELECT 220MF 20% 6.3V
C619	1-136-153-00	FILM 0.01MF 5% 50V

Ref.No.	Part No.	Description
C620	1-126-176-11	ELECT 220MF 20% 6.3V
C621	1-123-875-11	ELECT 10MF 20% 50V
C622	1-130-471-00	MYLAR 0.001MF 5% 50V
C623	1-136-165-00	FILM 0.1MF 5% 50V
C624	1-164-019-11	CERAMIC 10PF 0.5PF 50V
C625	1-164-027-11	CERAMIC 22PF 5% 50V
C626	1-164-027-11	CERAMIC 22PF 5% 50V
C627	1-136-153-00	FILM 0.01MF 5% 50V
C628	1-126-176-11	ELECT 220MF 20% 6.3V
C629	1-161-494-00	CERAMIC 0.022MF 25V
C630	1-162-294-31	CERAMIC 0.001MF 10% 50V
C631	1-124-443-00	ELECT 100MF 20% 6.3V
C632	1-124-443-00	ELECT 100MF 20% 6.3V
C633	1-130-481-00	MYLAR 0.0068MF 5% 50V
C634	1-130-475-00	MYLAR 0.0022MF 5% 50V
C636	1-124-963-11	ELECT 33MF 20% 16V
C637	1-126-233-11	ELECT 22MF 20% 25V
C638	1-136-159-00	FILM 0.033MF 5% 50V
C639	1-164-082-11	CERAMIC 560PF 10% 50V
C640	1-126-233-11	ELECT 22MF 20% 25V
C681	1-124-443-00	ELECT 100MF 20% 6.3V
C682	1-124-443-00	ELECT 100MF 20% 6.3V
C683	1-130-481-00	MYLAR 0.0068MF 5% 50V
C684	1-130-475-00	MYLAR 0.0022MF 5% 50V
C686	1-124-963-11	ELECT 33MF 20% 16V
C687	1-126-233-11	ELECT 22MF 20% 25V
C688	1-136-159-00	FILM 0.033MF 5% 50V
C689	1-164-082-11	CERAMIC 560PF 10% 50V
C690	1-126-233-11	ELECT 22MF 20% 25V
C701	1-124-925-11	ELECT 2.2MF 20% 50V
C702	1-162-286-31	CERAMIC 220PF 10% 50V
C703	1-162-286-31	CERAMIC 220PF 10% 50V
C704	1-124-443-00	ELECT 100MF 20% 6.3V
C705	1-124-122-11	ELECT 100MF 20% 50V
C706	1-124-910-11	ELECT 47MF 20% 35V
C707	1-126-233-11	ELECT 22MF 20% 25V
C708	1-124-122-11	ELECT 100MF 20% 50V
C709	1-136-163-00	FILM 0.068MF 5% 50V
C710	1-136-163-00	FILM 0.068MF 5% 50V
C711	1-126-176-11	ELECT 220MF 20% 6.3V
C712	1-126-176-11	ELECT 220MF 20% 6.3V
C713	1-124-443-00	ELECT 100MF 20% 6.3V
C714	1-136-163-00	(WG)...FILM 0.068MF 5% 50V
C715	1-136-163-00	(WG)...FILM 0.068MF 5% 50V
C716	1-136-163-00	(WG)...FILM 0.068MF 5% 50V
C717	1-136-163-00	(WG)...FILM 0.068MF 5% 50V
C751	1-124-925-11	ELECT 2.2MF 20% 50V
C752	1-162-286-31	CERAMIC 220PF 10% 50V
C753	1-162-286-31	CERAMIC 220PF 10% 50V
C754	1-124-443-00	ELECT 100MF 20% 6.3V
C756	1-124-910-11	ELECT 47MF 20% 35V
C759	1-136-163-00	FILM 0.068MF 5% 50V
C760	1-136-163-00	FILM 0.068MF 5% 50V
C764	1-136-163-00	(WG)...FILM 0.068MF 5% 50V
C765	1-136-163-00	(WG)...FILM 0.068MF 5% 50V
C766	1-136-163-00	(WG)...FILM 0.068MF 5% 50V
C767	1-136-163-00	(WG)...FILM 0.068MF 5% 50V

Ref.No.	Part No.	Description			
C801	1-102-394-11	(E,Saudi Arabia) ...CERAMIC 0.01MF	250V		
C802	1-126-138-11	(AEP,UK,WG,IT) ...ELECT 4700MF 20%	50V		
C802	1-126-258-11	(E,Saudi Arabia)ELECT 4700MF 20%	56V		
C803	1-126-138-11	(AEP,UK,WG,IT) ...ELECT 4700MF 20%	50V		
C803	1-126-258-11	(E,Saudi Arabia)ELECT 4700MF 20%	56V		
C804	1-123-875-11	ELECT 10MF	20%	50V	
C805	1-102-394-11	CERAMIC 0.01MF	250V		
C806	1-124-557-11	ELECT 1000MF	20%	25V	
C807	1-124-557-11	ELECT 1000MF	20%	25V	
C808	1-126-101-11	ELECT 100MF	20%	16V	
C809	1-126-101-11	ELECT 100MF	20%	16V	
C810	1-124-443-00	ELECT 100MF	20%	6.3V	
C811	1-124-443-00	ELECT 100MF	20%	6.3V	
C812	1-124-572-11	(E,Saudi Arabia) ...ELECT 100MF 20%	63V		
C814	1-124-443-00	ELECT 100MF	20%	6.3V	
C815	1-124-484-11	ELECT 220MF	20%	35V	
C901	1-136-165-00	FILM 0.1MF	5%	50V	
C902	1-124-463-00	ELECT 0.1MF	20%	50V	
C903	1-125-444-11	DUBLE LAYERS 0.1F		5.5V	
C904	1-126-154-11	ELECT 47MF	20%	6.3V	
C905	1-161-494-00	CERAMIC 0.022MF		25V	
C906	1-126-162-11	ELECT 3.3MF	20%	50V	
C907	1-126-154-11	ELECT 47MF	20%	6.3V	
C911	1-162-282-31	CERAMIC 100PF	10%	50V	
C912	1-161-494-00	CERAMIC 0.022MF		25V	
C913	1-161-494-00	CERAMIC 0.022MF	30%	25V	
C914	1-161-494-00	CERAMIC 0.022MF	30%	25V	
C915	1-101-005-00	CERAMIC 0.022MF		50V	
CF901	1-567-772-11	VIBRATOR, CERAMIC (4.19MHZ)			
CNJ1	Δ 1-526-751-00	(UK).....OUTLET, AC			
CNJ1	Δ 1-526-794-11	(AEP,WG,Saudi Arabia,IT)...OUTLET, AC			
CNJ1	Δ 1-526-882-00	(E).....OUTLET, AC (2 GANG)			
CNJ101	1-565-258-11	JACK, PIN 4P (TAPE)			
CNJ102	1-565-320-11	JACK, PIN 6P (PHONO)(DAT)(TUNER)			
CNJ103	1-565-258-11	JACK, PIN 4P (EQUALIZER)			
CNJ104*1	1-565-956-11	SOCKET, CONNECTOR 7P			
CNJ105*1	1-565-956-11	SOCKET, CONNECTOR 7P			
CNJ106*1	1-565-441-11	SOCKET, CONNECTOR (PCB) 12P			
CNJ107*1	1-565-440-11	PIN, CONNECTOR (PCB) 12P			
CNJ108*1	1-565-441-11	SOCKET, CONNECTOR (PCB) 12P			
CNJ109*1	1-565-440-11	PIN, CONNECTOR (PCB) 12P			
CNJ110*1	1-565-956-11	SOCKET, CONNECTOR 7P			
CNJ201	1-565-304-11	JACK, PIN 4P (VIDEO 1/CD AUDIO)			
CNJ202	1-565-304-11	JACK, PIN 4P (VIDEO 2/DAT AUDIO)			
CNJ203*1	1-565-973-11	PLUG (WITH CONNECTOR) (L) 7P			
CNJ204*1	1-565-973-11	PLUG (WITH CONNECTOR) (L) 7P			
CNJ301	1-565-934-11	JACK, PIN 2P (VIDEO 1/CD VIDEO)			
CNJ302	1-565-934-11	JACK, PIN 2P (VIDEO 2/DAT VIDEO) (MONITOR VIDEO)			
CNJ401	1-563-347-11	JACK (MIC)			
CNJ402*1	1-564-520-11	PLUG, CONNECTOR 5P			
CNJ501*1	1-564-508-11	PLUG, CONNECTOR 5P			
CNJ502*1	1-564-508-11	PLUG, CONNECTOR 5P			
CNJ503*1	1-564-508-11	PLUG, CONNECTOR 5P			

Ref.No.	Part No.	Description			
CNJ506*1	1-564-506-11	PLUG, CONNECTOR 3P			
CNJ507*1	1-564-509-11	PLUG, CONNECTOR 6P			
CNJ508*1	1-564-509-11	PLUG, CONNECTOR 6P			
CNJ601*1	1-565-973-11	PLUG (WITH CONNECTOR) (L) 7P			
CNJ602*1	1-564-511-11	PLUG, CONNECTOR 8P			
CNJ701	1-568-572-11	JACK, PIN 2P (SURROUND SPEAKER)			
CNJ702	1-568-018-11	JACK, LARGE TYPE 1P (HEADPHONES)			
CNJ703*1	1-564-506-11	PLUG, CONNECTOR 3P			
CNJ704*1	1-564-518-11	PLUG, CONNECTOR 3P			
CNJ705*1	1-564-506-11	PLUG, CONNECTOR 3P			
CNJ706*1	1-564-507-11	PLUG, CONNECTOR 4P			
CNJ707*1	1-564-519-11	PLUG, CONNECTOR 4P			
CNJ708*1	1-564-523-11	PLUG, CONNECTOR 8P			
CNJ709*1	1-564-511-11	PLUG, CONNECTOR 8P			
CNJ901*1	1-564-511-11	PLUG, CONNECTOR 8P			
CNJ902*1	1-565-441-11	SOCKET, CONNECTOR (PCB) 12P			
CNJ903*1	1-565-440-11	PIN, CONNECTOR (PCB) 12P			
CNJ904*1	1-565-441-11	SOCKET, CONNECTOR (PCB) 12P			
CNJ905*1	1-565-440-11	PIN, CONNECTOR (PCB) 12P			
CNJ906*1	1-564-505-11	PLUG, CONNECTOR 2P			
CNJ912*1	1-564-505-11	PLUG, CONNECTOR 2P			
CNJ915*1	1-565-561-11	PIN, CONNECTOR 3P (AU BUS)			
CNP1	Δ 1-551-188-XX	(E).....CORD, POWER			
CNP1	Δ 1-555-750-00	(AEP,WG,Saudi Arabia,IT)...CORD, POWER			
CNP1	Δ 1-556-035-00	(UK).....CORD, POWER			
D501	8-719-000-26	DIODE US1060M			
D502	8-719-000-26	DIODE US1060M			
D601	8-719-000-26	DIODE US1060M			
D602	8-719-000-26	DIODE US1060M			
D603	8-719-000-26	DIODE US1060M			
D701	8-719-000-26	DIODE US1060M			
D702	8-719-000-26	DIODE US1060M			
D703	8-719-000-26	DIODE US1060M			
D704	8-719-000-26	DIODE US1060M			
D751	8-719-000-26	DIODE US1060M			
D801	8-719-302-38	DIODE RBV-602-01			
D802	8-719-200-77	DIODE 10E2N			
D803	8-719-200-77	DIODE 10E2N			
D804	8-719-200-77	DIODE 10E2N			
D805	8-719-200-77	DIODE 10E2N			
D806	8-719-200-77	DIODE 10E2N			
D807	8-719-200-77	DIODE 10E2N			
D808	8-719-000-26	DIODE US1060M			
D809	8-719-014-64	DIODE UZP-5.1BC			
D810	8-719-000-26	DIODE US1060M			
D811	8-719-002-45	DIODE UZL-27M			
D901	8-719-000-26	DIODE US1060M			
D902	8-719-000-26	DIODE US1060M			
D903	8-719-000-26	DIODE US1060M			
D904	8-719-000-26	DIODE US1060M			
D905	8-719-000-26	DIODE US1060M			
D906	8-719-000-26	DIODE US1060M			
D907	8-719-000-26	DIODE US1060M			
D908	8-719-000-26	DIODE US1060M			
D909	8-719-000-26	DIODE US1060M			
D910	8-719-311-86	DIODE SEL4825WMCD			
D911	8-719-311-86	DIODE SEL4825WMCD			
D912	8-719-311-85	DIODE SEL4225WMCD			

Note: The components identified by mark **Δ** or dotted line with mark **Δ** are critical for safety. Replace only with part number specified.

Ref.No.	Part No.	Description			
D914	8-719-975-61	DIODE SLP3070			
D915	8-719-200-77	DIODE 10E2N			
D916	8-719-000-26	DIODE US1060M			
D917	8-719-010-29	DIODE UZ-4.3BSB			
D918	8-719-000-26	DIODE US1060M			
D919	8-719-000-26	DIODE US1060M			
D920	8-719-000-26	DIODE US1060M			
D921	8-719-000-26	DIODE US1060M			
D922	8-719-000-26	DIODE US1060M			
F1	Δ 1-532-259-00	FUSE, TIME-LAG T1.6A			
F2	Δ 1-532-259-00	(AEP,WG,E,Saudi Arabia,IT) ...FUSE, TIME-LAG T1.6A			
FL901	1-519-490-11	INDICATOR TUBE, FLUORESCENT			
IC101	8-759-600-02	IC M5218L			
IC102	8-759-208-06	IC TC4051BPHB			
IC103	8-759-208-06	IC TC4051BPHB			
IC201	8-759-800-37	IC LC4066BH			
IC301	8-759-208-08	IC TC4052BPHB			
IC401	8-759-601-02	IC M5218P			
IC501	8-759-600-02	IC M5218L			
IC502	8-759-600-02	IC M5218L			
IC503	8-759-601-02	IC M5218P			
IC504	8-759-800-37	IC LC4066BH			
IC505	8-759-800-37	IC LC4066BH			
IC601	8-759-202-93	IC TC74HC153P			
IC602	8-759-601-02	IC M5218P			
IC603	8-752-329-95	IC CXD1243P			
IC604	8-752-328-72	IC CXD2550P			
IC605	8-759-605-44	IC M74HC6004P			
IC606	8-759-941-30	IC PCM56P-L			
IC607	8-759-941-30	IC PCM56P-L			
IC608	8-759-601-02	IC M5218P			
IC701	8-749-920-90	(E,Saudi Arabia)...IC STK4201MK2			
IC701	8-749-920-10	(AEP,UK,WG,IT).....IC STK417211			
IC702	8-759-111-68	IC UPC1237HA			
IC801	8-759-604-32	IC M5F7810			
IC802	8-759-604-50	IC M5F7910			
IC803	8-759-604-29	IC M5F7805			
IC804	8-759-604-47	IC M5F7905			
IC805	8-759-604-29	IC M5F7805			
IC901	8-759-145-02	IC UPD75206CW-113			
IC902	8-759-820-62	IC LB1639			
IC903	8-759-605-16	IC M51953BL			
L601	1-410-517-11	INDUCTOR 47UH			
L602	1-410-517-11	INDUCTOR 47UH			
L603	1-410-324-11	INDUCTOR 4.7UH			
L604	1-410-324-11	INDUCTOR 4.7UH			
L605	1-410-324-11	INDUCTOR 4.7UH			
L606	1-410-324-11	INDUCTOR 4.7UH			
L607	1-410-324-11	INDUCTOR 4.7UH			
L608	1-410-324-11	INDUCTOR 4.7UH			
L701	*1-420-872-00	COIL, AIR CORE			
L751	*1-420-872-00	COIL, AIR CORE			
L901	1-410-521-11	INDUCTOR 100UH			
Q101	8-729-806-34	TRANSISTOR 2SC3400			
Q102	8-729-806-34	TRANSISTOR 2SC3400			
Q103	8-729-806-34	TRANSISTOR 2SC3400			

Ref.No.	Part No.	Description			
Q104	8-729-806-34	TRANSISTOR 2SC3400			
Q105	8-729-806-34	TRANSISTOR 2SC3400			
Q106	8-729-806-34	TRANSISTOR 2SC3400			
Q107	8-729-806-34	TRANSISTOR 2SC3400			
Q301	8-729-119-78	TRANSISTOR 2SC2785HFE			
Q302	8-729-119-78	TRANSISTOR 2SC2785HFE			
Q303	8-729-119-78	TRANSISTOR 2SC2785HFE			
Q304	8-729-119-78	TRANSISTOR 2SC2785HFE			
Q305	8-729-119-76	TRANSISTOR 2SA1175HFE			
Q306	8-729-119-76	TRANSISTOR 2SA1175HFE			
Q501	8-729-224-63	TRANSISTOR 2SK246BL			
Q502	8-729-119-78	TRANSISTOR 2SC2785HFE			

Ref.No.	Part No.	Description	Quantity	Material	Notes
R110	1-249-413-11	CARBON	470	5%	1/4W
R111	1-247-903-00	CARBON	1M	5%	1/4W
R112	1-249-417-11	CARBON	1K	5%	1/4W
R113	1-247-903-00	CARBON	1M	5%	1/4W
R114	1-249-413-11	CARBON	470	5%	1/4W
R115	1-247-903-00	CARBON	1M	5%	1/4W
R116	1-249-417-11	CARBON	1K	5%	1/4W
R117	1-247-903-00	CARBON	1M	5%	1/4W
R118	1-249-413-11	CARBON	470	5%	1/4W
R119	1-247-903-00	CARBON	1M	5%	1/4W
R120	1-249-417-11	CARBON	1K	5%	1/4W
R121	1-247-903-00	CARBON	1M	5%	1/4W
R122	1-249-425-11	CARBON	4.7K	5%	1/4W
R123	1-249-433-11	CARBON	22K	5%	1/4W
R124	1-249-433-11	CARBON	22K	5%	1/4W
R125	1-249-433-11	CARBON	22K	5%	1/4W
R126	1-249-417-11	CARBON	1K	5%	1/4W
R127	1-249-417-11	CARBON	1K	5%	1/4W
R128	1-249-417-11	CARBON	1K	5%	1/4W
R129	1-249-417-11	CARBON	1K	5%	1/4W
R130	1-249-417-11	CARBON	1K	5%	1/4W
R131	1-249-417-11	CARBON	1K	5%	1/4W
R132	1-249-417-11	CARBON	1K	5%	1/4W
R151	1-249-417-11	CARBON	1K	5%	1/4W
R152	1-249-441-11	CARBON	100K	5%	1/4W
R153	1-249-417-11	CARBON	1K	5%	1/4W
R154	1-249-441-11	CARBON	100K	5%	1/4W
R155	1-249-416-11	CARBON	820	5%	1/4W
R156	1-247-897-11	CARBON	560K	5%	1/4W
R157	1-249-437-11	CARBON	47K	5%	1/4W
R158	1-249-417-11	CARBON	1K	5%	1/4W
R159	1-249-441-11	CARBON	100K	5%	1/4W
R160	1-249-413-11	CARBON	470	5%	1/4W
R161	1-247-903-00	CARBON	1M	5%	1/4W
R162	1-249-417-11	CARBON	1K	5%	1/4W
R163	1-247-903-00	CARBON	1M	5%	1/4W
R164	1-249-413-11	CARBON	470	5%	1/4W
R165	1-247-903-00	CARBON	1M	5%	1/4W
R166	1-249-417-11	CARBON	1K	5%	1/4W
R167	1-247-903-00	CARBON	1M	5%	1/4W
R168	1-249-413-11	CARBON	470	5%	1/4W
R169	1-247-903-00	CARBON	1M	5%	1/4W
R170	1-249-417-11	CARBON	1K	5%	1/4W
R171	1-247-903-00	CARBON	1M	5%	1/4W
R172	1-249-425-11	CARBON	4.7K	5%	1/4W
R201	1-249-417-11	CARBON	1K	5%	1/4W
R202	1-247-903-00	CARBON	1M	5%	1/4W
R203	1-247-903-00	CARBON	1M	5%	1/4W
R204	1-249-413-11	CARBON	470	5%	1/4W
R205	1-247-903-00	CARBON	1M	5%	1/4W
R206	1-249-417-11	CARBON	1K	5%	1/4W
R207	1-247-903-00	CARBON	1M	5%	1/4W
R208	1-247-903-00	CARBON	1M	5%	1/4W
R209	1-249-413-11	CARBON	470	5%	1/4W
R210	1-247-903-00	CARBON	1M	5%	1/4W
R211	1-249-417-11	CARBON	1K	5%	1/4W
R212	1-249-437-11	CARBON	47K	5%	1/4W

Ref.No.	Part No.	Description	Quantity	Material	Notes
R213	1-249-417-11	CARBON	1K	5%	1/4W
R214	1-249-437-11	CARBON	47K	5%	1/4W
R251	1-249-417-11	CARBON	1K	5%	1/4W
R252	1-247-903-00	CARBON	1M	5%	1/4W
R253	1-247-903-00	CARBON	1M	5%	1/4W
R254	1-249-413-11	CARBON	470	5%	1/4W
R255	1-247-903-00	CARBON	1M	5%	1/4W
R256	1-249-417-11	CARBON	1K	5%	1/4W
R257	1-247-903-00	CARBON	1M	5%	1/4W
R258	1-247-903-00	CARBON	1M	5%	1/4W
R259	1-249-413-11	CARBON	470	5%	1/4W
R260	1-247-903-00	CARBON	1M	5%	1/4W
R301	1-247-804-11	CARBON	75	5%	1/4W
R302	1-247-804-11	CARBON	75	5%	1/4W
R303	1-247-804-11	CARBON	75	5%	1/4W
R304	1-247-804-11	CARBON	75	5%	1/4W
R305	1-249-439-11	CARBON	68K	5%	1/4W
R306	1-249-433-11	CARBON	22K	5%	1/4W
R307	1-249-416-11	CARBON	820	5%	1/4W
R308	1-249-423-11	CARBON	3.3K	5%	1/4W
R309	1-249-426-11	CARBON	5.6K	5%	1/4W
R310	1-249-423-11	CARBON	3.3K	5%	1/4W
R311	1-249-438-11	CARBON	56K	5%	1/4W
R312	1-249-437-11	CARBON	47K	5%	1/4W
R313	1-249-408-11	CARBON	180	5%	1/4W
R314	1-249-438-11	CARBON	56K	5%	1/4W
R315	1-249-437-11	CARBON	47K	5%	1/4W
R316	1-249-408-11	CARBON	180	5%	1/4W
R317	1-249-438-11	CARBON	56K	5%	1/4W
R318	1-249-437-11	CARBON	47K	5%	1/4W
R319	1-249-408-11	CARBON	180	5%	1/4W
R320	1-249-437-11	CARBON	47K	5%	1/4W
R321	1-249-437-11	CARBON	47K	5%	1/4W
R322	1-249-417-11	CARBON	1K	5%	1/4W
R323	1-249-417-11	CARBON	1K	5%	1/4W
R401	1-249-417-11	CARBON	1K	5%	1/4W
R402	1-249-429-11	CARBON	10K	5%	1/4W
R403	1-249-412-11	CARBON	390	5%	1/4W
R404	1-249-441-11	CARBON	100K	5%	1/4W
R405	1-249-416-11	CARBON	820	5%	1/4W
R406	1-249-441-11	CARBON	100K	5%	1/4W
R501	1-249-437-11	CARBON	47K	5%	1/4W
R502	1-249-437-11	CARBON	47K	5%	1/4W
R503	1-249-434-11	CARBON	27K	5%	1/4W
R504	1-249-434-11	CARBON	27K	5%	1/4W
R505	1-249-430-11	CARBON	12K	5%	1/4W
R506	1-249-417-11	CARBON	1K	5%	1/4W
R507	1-249-425-11	CARBON	4.7K	5%	1/4W
R508	1-249-441-11	CARBON	100K	5%	1/4W
R509	1-249-428-11	CARBON	8.2K	5%	1/4W
R510	1-249-422-11	CARBON	2.7K	5%	1/4W
R511	1-249-437-11	CARBON	47K	5%	1/4W
R512	1-249-412-11	CARBON	390	5%	1/4W
R513	1-249-426-11	CARBON	5.6K	5%	1/4W
R514	1-249-441-11	CARBON	100K	5%	1/4W
R516	1-249-435-11	CARBON	33K	5%	1/4W
R517	1-249-428-11	CARBON	8.2K	5%	1/4W

Ref.No.	Part No.	Description	Quantity	Material	Notes
R518	1-249-435-11	CARBON	33K	5%	1/4W
R519	1-249-425-11	CARBON	4.7K	5%	1/4W
R520	1-249-417-11	CARBON	1K	5%	1/4W
R521	Δ 1-212-865-00	FUSIBLE	22	5%	1/4W F
R522	1-249-433-11	CARBON	22K	5%	1/4W
R523	1-249-425-11	CARBON	4.7K	5%	1/4W
R524	1-247-903-00	CARBON	1M	5%	1/4W
R525	1-247-903-00	CARBON	1M	5%	1/4W
R526	1-249-428-11	CARBON	8.2K	5%	1/4W
R527	1-249-417-11	CARBON	1K	5%	1/4W
R528	1-249-417-11	CARBON	1K	5%	1/4W
R529	1-249-437-11	CARBON	47K	5%	1/4W
R530	1-249-417-11	CARBON	1K	5%	1/4W
R531	1-249-417-11	CARBON	1K	5%	1/4W
R532	1-249-437-11	CARBON	47K	5%	1/4W
R551	1-249-437-11	CARBON	47K	5%	1/4W
R552	1-249-437-11	CARBON	47K	5%	1/4W
R553	1-249-434-11	CARBON	27K	5%	1/4W
R554	1-249-434-11	CARBON	27K	5%	1/4W
R555	1-249-430-11	CARBON	12K	5%	1/4W
R556	1-249-417-11	CARBON	1K	5%	1/4W
R557	1-249-425-11	CARBON	4.7K	5%	1/4W
R558	1-249-441-11	CARBON	100K	5%	1/4W
R559	1-249-428-11	CARBON	8.2K	5%	1/4W
R560	1-249-422-11	CARBON	2.7K	5%	1/4W
R561	1-249-437-11	CARBON	47K	5%	1/4W
R562	1-249-412-11	CARBON	390	5%	1/4W
R563	1-249-426-11	CARBON	5.6K	5%	1/4W
R564	1-249-441-11	CARBON	100K	5%	1/4W
R566	1-249-435-11	CARBON	33K	5%	1/4W
R567	1-249-428-11	CARBON	8.2K	5%	1/4W
R568	1-249-435-11	CARBON	33K	5%	1/4W
R569	1-249-425-11	CARBON	4.7K	5%	1/4W
R570	1-249-417-11	CARBON	1K	5%	1/4W
R571	Δ 1-212-865-00	FUSIBLE	22	5%	1/4W F
R573	1-249-425-11	CARBON	4.7K	5%	1/4W
R574	1-247-903-00	CARBON	1M	5%	1/4W
R600	1-249-425-11	CARBON	4.7K	5%	1/4W
R601	1-249-425-11	CARBON	4.7K	5%	1/4W
R602	1-249-425-11	CARBON	4.7K	5%	1/4W
R607	1-249-417-11	CARBON	1K	5%	1/4W
R608	1-249-429-11	CARBON	10K	5%	1/4W
R609	1-249-421-11	CARBON	2.2K	5%	1/4W
R610	1-249-425-11	CARBON	4.7K	5%	1/4W
R611	1-249-425-11	CARBON	4.7K	5%	1/4W
R612	1-249-425-11	CARBON	4.7K	5%	1/4W
R613	1-249-417-11	CARBON	1K	5%	1/4W
R614	1-249-425-11	CARBON	4.7K	5%	1/4W
R615	1-249-429-11	CARBON	10K	5%	1/4W
R616	1-249-417-11	CARBON	1K	5%	1/4W
R617	1-249-417-11	CARBON	1K	5%	1/4W
R618	1-249-429-11	CARBON	10K	5%	1/4W
R619	1-249-425-11	CARBON	4.7K	5%	1/4W
R620	1-249-434-11	CARBON	27K	5%	1/4W
R621	1-249-422-11	CARBON	2.7K	5%	1/4W
R622	1-247-862-11	CARBON	20K	5%	1/4W
R623	1-249-421-11	CARBON	2.2K	5%	1/4W

Ref.No.	Part No.	Description	Quantity	Material	Notes
R624	1-249-411-11	CARBON	330	5%	1/4W
R625	1-249-411-11	CARBON	330	5%	1/4W
R626	1-249-411-11	CARBON	330	5%	1/4W
R627	1-249-407-11	CARBON	150	5%	1/4W
R628	1-249-411-11	CARBON	330	5%	1/4W
R629	1-249-411-11	CARBON	330	5%	1/4W
R630	1-249-417-11	CARBON	1K	5%	1/4W
R631	1-249-411-11	CARBON	330	5%	1/4W
R632	1-249-411-11	CARBON	330	5%	1/4W
R633	1-249-417-11	CARBON	1K	5%	1/4W
R634	1-249-417-11	CARBON	1K	5%	1/4W
R635	1-249-417-11	CARBON	1K	5%	1/4W
R636	1-249-411-11	CARBON	330	5%	1/4W
R637	1-249-415-11	CARBON	680	5%	1/4W
R638	1-249-415-11	CARBON	680	5%	1/4W
R639	1-249-417-11	CARBON	1K	5%	1/4W
R641	1-247-883-00	CARBON	150K	5%	1/4W
R642	1-247-832-11	CARBON	1.1K	5%	1/4W
R643	1-249-413-11	CARBON	470	5%	1/4W
R644	1-247-903-00	CARBON	1M	5%	1/4W
R645	1-249-413-11	CARBON	470	5%	1/4W
R646	1-247-903-00	CARBON	1M	5%	1/4W
R647	1-247-903-00	CARBON	1M	5%	1/4W
R648	1-249-441-11	CARBON	100K	5%	1/4W
R649	1-249-441-11	CARBON	100K	5%	1/4W
R650	1-249-425-11	CARBON	4.7K	5%	1/4W
R687	1-249-415-11	CARBON	680	5%	1/4W
R688	1-249-415-11	CARBON	680		

Ref.No.	Part No.	Description				
R719	1-249-433-11	CARBON	22K	5%	1/4W	
R720	1-249-429-11	CARBON	10K	5%	1/4W	
R721	1-249-441-11	CARBON	100K	5%	1/4W	
R722	1-249-428-11	CARBON	8.2K	5%	1/4W	
R723	1-249-436-11	CARBON	39K	5%	1/4W	
R724	1-249-486-11	(AEP,UK,WG,IT) ...CARBON	12K	5%	1/2W	
R724	1-249-487-11	(E,Saudi Arabia) ...CARBON	15K	5%	1/2W	
R725	△.1-216-455-11	(AEP,UK,WG,IT) METAL OXIDE	560	5%	2W	F
R725	△.1-216-456-00	(E,Saudi Arabia) ...METAL OXIDE	820	5%	2W	F
R726	1-247-727-11	(WG)...CARBON	10	5%	1/2W	
R727	1-247-727-11	(WG)...CARBON	10	5%	1/2W	
R751	1-249-417-11	CARBON	1K	5%	1/4W	
R752	1-249-438-11	CARBON	56K	5%	1/4W	
R753	1-249-414-11	CARBON	560	5%	1/4W	
R754	1-249-438-11	CARBON	56K	5%	1/4W	
R755	1-247-758-11	(AEP,UK,WG,IT) ...CARBON	3.3K	5%	1/2W	
R755	1-247-760-11	(E,Saudi Arabia) ...CARBON	4.7K	5%	1/2W	
R756	1-247-758-11	(AEP,UK,WG,IT) ...CARBON	3.3K	5%	1/2W	
R756	1-247-760-11	(E,Saudi Arabia) ...CARBON	4.7K	5%	1/2W	
R761	1-249-417-11	CARBON	1K	5%	1/4W	
R762	1-249-431-11	CARBON	15K	5%	1/4W	
R763	1-249-441-11	CARBON	100K	5%	1/4W	
R764	1-217-156-00	METAL PLATE	0.22	10%	5W	
R765	1-247-727-11	CARBON	10	5%	1/2W	
R766	1-249-437-11	CARBON	47K	5%	1/4W	
R767	1-247-746-11	CARBON	390	5%	1/2W	
R768	1-247-727-11	CARBON	10	5%	1/2W	
R769	1-249-433-11	CARBON	22K	5%	1/4W	
R776	1-247-727-11	(WG)...CARBON	10	5%	1/2W	
R777	1-247-727-11	(WG)...CARBON	10	5%	1/2W	
R801	△.1-217-469-00	FUSIBLE	1	5%	1W	F
R802	△.1-217-469-00	FUSIBLE	1	5%	1W	F
R803	1-249-428-11	CARBON	8.2K	5%	1/4W	
R804	1-249-426-11	CARBON	5.6K	5%	1/4W	
R805	1-249-421-11	CARBON	2.2K	5%	1/4W	
R806	1-217-156-00	(E,Saudi Arabia) ...METAL PLATE	0.22	10%	5W	
R807	1-217-156-00	(E,Saudi Arabia) ...METAL PLATE	0.22	10%	5W	
R808	1-217-156-00	(E,Saudi Arabia) ...METAL PLATE	0.22	10%	5W	
R809	1-217-156-00	(E,Saudi Arabia) ...METAL PLATE	0.22	10%	5W	
R810	△.1-217-469-00	(AEP,UK,WG,IT) ...FUSIBLE	1	5%	1W	F

Ref.No.	Part No.	Description				
R811	△.1-217-469-00	(AEP,UK,WG,IT) ...FUSIBLE	1	5%	1W	F
R812	1-217-156-00	(E,Saudi Arabia) ...METAL PLATE	0.22	10%	5W	
R813	1-217-156-00	(E,Saudi Arabia) ...METAL PLATE	0.22	10%	5W	
R901	1-249-417-11	CARBON	1K	5%	1/4W	
R902	1-249-429-11	CARBON	10K	5%	1/4W	
R903	1-249-393-11	CARBON	10	5%	1/4W	
R904	1-249-405-11	CARBON	100	5%	1/4W	
R905	1-249-405-11	CARBON	100	5%	1/4W	
R906	1-249-439-11	CARBON	68K	5%	1/4W	
R908	1-249-417-11	CARBON	1K	5%	1/4W	
R909	1-249-417-11	CARBON	1K	5%	1/4W	
R911	1-249-417-11	CARBON	1K	5%	1/4W	
R912	1-249-417-11	CARBON	1K	5%	1/4W	
R913	1-249-429-11	CARBON	10K	5%	1/4W	
R914	1-249-433-11	CARBON	22K	5%	1/4W	
R916	1-249-433-11	CARBON	22K	5%	1/4W	
R917	1-249-433-11	CARBON	22K	5%	1/4W	
R918	1-249-433-11	CARBON	22K	5%	1/4W	
R919	1-249-417-11	CARBON	1K	5%	1/4W	
R920	1-249-417-11	CARBON	1K	5%	1/4W	
R922	1-249-408-11	CARBON	180	5%	1/4W	
R923	1-249-415-11	CARBON	680	5%	1/4W	
R924	1-249-415-11	CARBON	680	5%	1/4W	
R925	1-249-416-11	CARBON	820	5%	1/4W	
R926	1-249-433-11	CARBON	22K	5%	1/4W	
R927	1-249-433-11	CARBON	22K	5%	1/4W	
R928	1-249-437-11	CARBON	47K	5%	1/4W	
R929	1-249-437-11	CARBON	47K	5%	1/4W	
R930	1-249-437-11	CARBON	47K	5%	1/4W	
R931	1-249-433-11	CARBON	22K	5%	1/4W	
R932	1-249-433-11	CARBON	22K	5%	1/4W	
R933	1-249-433-11	CARBON	22K	5%	1/4W	
R934	1-249-441-11	CARBON	100K	5%	1/4W	
R935	1-249-433-11	CARBON	22K	5%	1/4W	
R936	1-249-417-11	CARBON	1K	5%	1/4W	
R937	1-249-441-11	CARBON	100K	5%	1/4W	
R938	1-249-429-11	CARBON	10K	5%	1/4W	
R939	1-249-429-11	CARBON	10K	5%	1/4W	
R940	1-249-429-11	CARBON	10K	5%	1/4W	
R941	1-249-441-11	CARBON	100K	5%	1/4W	
R942	1-249-441-11	CARBON	100K	5%	1/4W	
R945	1-249-441-11	CARBON	100K	5%	1/4W	

Ref.No.	Part No.	Description
RV401	1-237-883-11	RES, VAR, CARBON 50K (MIC LEVEL)
RV501	1-237-881-11	RES, VAR, CARBON 100K/100K (BASS)
RV502	1-237-881-11	RES, VAR, CARBON 100K/100K (TREBLE)
RV503	1-237-882-11	RES, VAR, CARBON 100K (BALANCE)
RV504	1-237-884-11	RES, VAR, CARBON 100K/100K (VOLUME)
RX601	8-759-977-72	GP1F31R (DIGITAL IN OPTICAL CD)
RX602	8-759-977-72	GP1F31R (DIGITAL IN OPTICAL DAT)
RY701	1-515-501-00	RELAY
S1	△.1-554-920-11	SWITCH, PUSH (AC POWER)(1 KEY)(POWER)
S701	1-571-987-11	SWITCH, PUSH (2 KEY)(SPEAKERS)
S901	1-554-303-21	SWITCH, KEY BOARD (PHONO)
S902	1-554-303-21	SWITCH, KEY BOARD (TUNER)
S903	1-554-303-21	SWITCH, KEY BOARD (TAPE)
S904	1-554-303-21	SWITCH, KEY BOARD (VIDEO 1/CD)
S905	1-554-303-21	SWITCH, KEY BOARD (VIDEO 2/DAT)
S906	1-554-303-21	SWITCH, KEY BOARD (CD)
S907	1-554-303-21	SWITCH, KEY BOARD (DAT)
S909	1-554-303-21	SWITCH, KEY BOARD (EQ REC)
S910	1-554-303-21	SWITCH, KEY BOARD (SURROUND)
S911	1-554-303-21	SWITCH, KEY BOARD (DBFB(SAT))
T1	△.1-449-762-11	(AEP,WG,UK)....TRANSFORMER, POWER
T1	△.1-449-763-11	(E,Saudi Arabia,IT) ...TRANSFORMER, POWER
TB901	*1-535-119-00	TERMINAL
TB902	*1-535-116-00	TERMINAL
TB903	*1-535-476-11	(AEP,WG,IT)...TERMINAL
TB904	*1-535-476-11	(AEP,WG,IT)...TERMINAL
TM701	1-537-230-11	(E,WG,UK)...TERMINAL BOARD (SP) (SPEAKER)
TM701	1-537-231-11	(AEP,IT)....TERMINAL-BOARD (SP) (SPEAKER)
VS1	△.1-570-307-11	(E,Saudi Arabia)...SWITCH, VOLTAGE CHANGE (VOLTAGE SELECTOR)
X601	1-577-269-11	VIBRATOR, CRYSTAL (54.8667MHz)

ACCESSORY & PACKING MATERIAL

1-574-264-11	CORD, LIGHT PLUG
*3-704-350-01	SHEET (STANDARD), PROTECTION
3-750-484-11	(AEP,UK,E,Saudi Arabia) ...MANUAL, INSTRUCTION
3-750-484-41	(AEP,WG,IT)...MANUAL, INSTRUCTION
*4-925-154-11	INDIVIDUAL CARTON
*4-930-826-01	CUSHION

Note: The components identified by mark Δ or dotted line with mark Δ are critical for safety. Replace only with part number specified.

Note: The components identified by mark Δ or dotted line with mark Δ are critical for safety. Replace only with part number specified.