

TC-TX5

SERVICE MANUAL

*AEP Model
UK Model
E Model
Tourist Model*



Dolby noise reduction manufactured under license from Dolby Laboratories Licensing Corporation.
"DOLBY" and the double-D symbol $\square\square$ are trademarks of Dolby Laboratories Licensing Corporation.

Model Name Using Similar Mechanism	TC-S1
Tape Transport Mechanism Type	TCM-9700HLD

SPECIFICATIONS

Recording system	4-track 2-channel stereo
Frequency response	(DOLBY NR OFF) 30 – 14,000 Hz (± 3 dB), using Sony TYPE I cassette 30 – 15,000 Hz (± 3 dB), using Sony TYPE II cassette
Wow and flutter	$\pm 0.15\%$ W. Peak (IEC) 0.1% W. RMS (NAB) $\pm 0.2\%$ W. Peak (DIN)
Input	TAPE IN (phono jacks): impedance 47 kilohms
Output	TAPE OUT (phono jacks): voltage 550 mV impedance 47 kilohms

General

Power requirements	AEP, UK, Germany: 220 – 230V AC, 50/60 Hz Other countries: 110 – 120V or 220 – 240 V AC, 50/60Hz Adjustable with the voltage selector
Power consumption	10 W
Dimensions	Approx. 280 × 85 × 360 mm (11 ¹ / ₈ × 3 ³ / ₈ × 14 ¹ / ₄ in) (w/h/d) incl. projecting parts and controls
Mass	Approx. 3.7 kg (8 lb 3 oz)
Supplied accessories:	Audio connecting cord (2) AU BUS connecting cord (1)

Design and specifications are subject to change without notice.



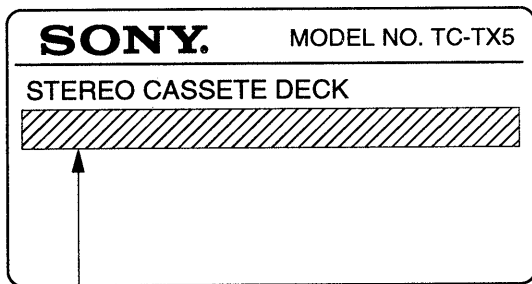
STEREO CASSETTE DECK
SONY[®]

SECTION 1 GENERAL

TABLE OF CONTENTS

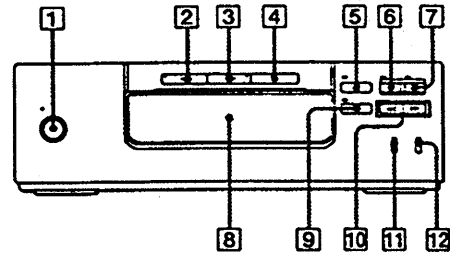
1.	GENERAL	2
2.	DISASSEMBLY	3
3.	MECHANICAL ADJUSTMENTS	4
4.	ELECTRICAL ADJUSTMENTS	4
5.	DIAGRAMS	
5-1.	IC Pin Function Description	7
5-2.	Printed Wiring Boards	9
5-3.	Schematic Diagram	13
6.	EXPLODED VIEWS	17
7.	ELECTRICAL PARTS LIST	22

MODEL IDENTIFICATION



AEP, UK, German model : AC 220-230V~50/60Hz 10W
 E, Saudi Arabia, Hong Kong, Malaysia, Singapore,
 Tourist model : AC 110-120V/220-240V~50/60Hz 10W

Identification of Front Panel Parts



- 1 POWER switch
- 2 ◁ (reverse play) button
- 3 ▷ (forward play) button
- 4 □ (stop) button
- 5 △ (EJECT) button
- 6 CD SYNC button
- 7 ○ REC (record) button
- 8 Cassette holder
- 9 ||| PAUSE button
- 10 <</>> (fast-forward, rewind/AMS) button
- 11 DOLBY NR switch
- 12 DIRECTION switch

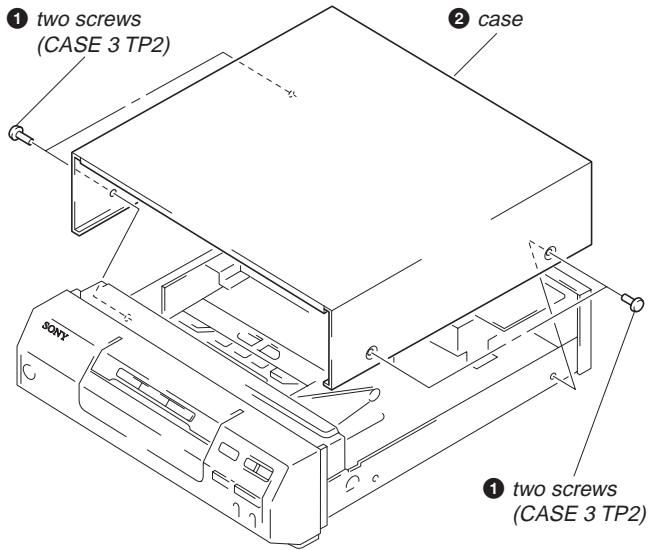
SAFETY-RELATED COMPONENT WARNING!!

COMPONENTS IDENTIFIED BY MARK △ OR DOTTED LINE WITH MARK △ ON THE SCHEMATIC DIAGRAMS AND IN THE PARTS LIST ARE CRITICAL TO SAFE OPERATION. REPLACE THESE COMPONENTS WITH SONY PARTS WHOSE PART NUMBERS APPEAR AS SHOWN IN THIS MANUAL OR IN SUPPLEMENTS PUBLISHED BY SONY.

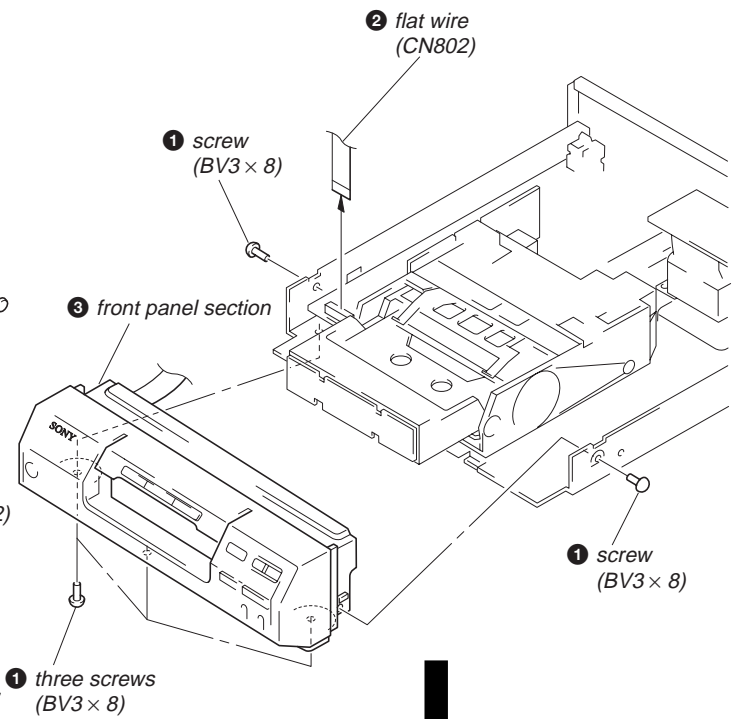
SECTION 2 DISASSEMBLY

Note: Follow the disassembly procedure in the numerical order given.

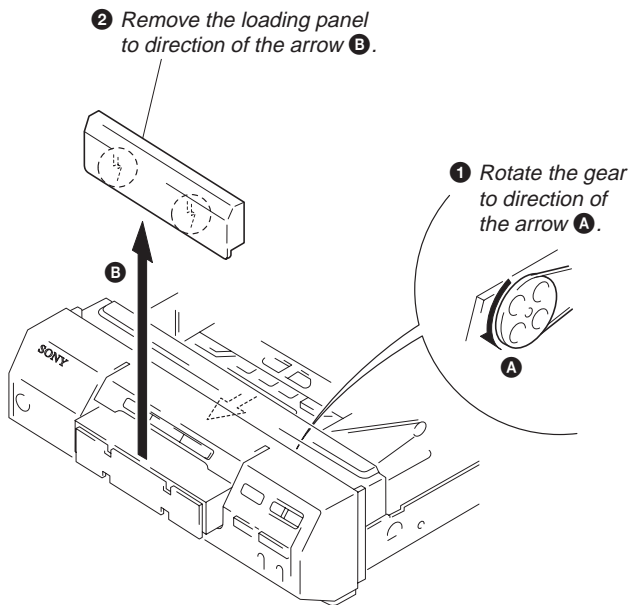
CASE



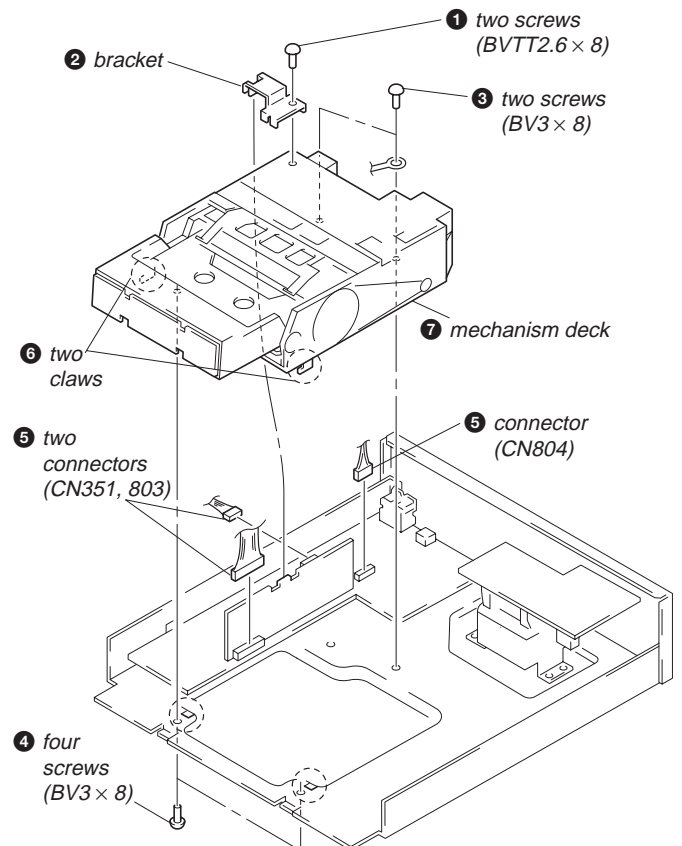
FRONT PANEL SECTION



LOADING PANEL



MECHANISM DECK



SECTION 3 MECHANICAL ADJUSTMENTS

PRECAUTION

1. Clean the following parts with a denatured-alcohol-moistened swab:

record/playback/earth head	pinch roller
rubber belts	capstan
idlers	
2. Demagnetize the record/playback head with a head demagnetizer. (Do not bring the head demagnetizer close to the erase head.)
3. Do not use a magnetized screwdriver for the adjustments.
4. After the adjustments, apply suitable locking compound to the parts adjusted.
5. The adjustments should be performed with the rated power supply voltage unless otherwise noted.

Torque Measurement

Mode	Torque Meter	Meter Reading
FWD	CQ-102C	30-65 g•cm (0.42-0.90 oz•inch)
FWD Back tension		1.5-6 g•cm (0.021-0.083 oz•inch)
REV	CQ-102RC	30-65 g•cm (0.42-0.90 oz•inch)
REV Back tension		1.5-6 g•cm (0.021-0.083 oz•inch)
FF, REW	CQ-201B	70-130 g•cm (0.98-1.80 oz•inch)

SECTION 4 ELECTRICAL ADJUSTMENTS

Note: The adjustment should be performed in the order given in the service manual. As a rule, adjustments about playback should be performed before those about recording.

The adjustments should be performed before for both L-CH and R-CH.

- Switches and controls should be set as follows unless otherwise specified.

DOLBY NR switch : OFF

DIRECTION switch : ⇄

0 dB=0.775 V

Test Tape

Type	Signal	Used for
P-4-A100	10 kHz, -10 dB	Azimuth Adjustment
P-4-L300	315 Hz, 0 dB	Playback Level Adjustment
WS-48B	3 kHz, 0 dB	Tape Speed Check

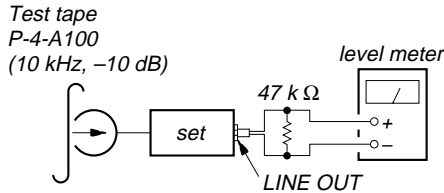
Test Mode

This set will get into test mode by shorting the pins of CN801 (2P) on MAIN board before turning the power on.

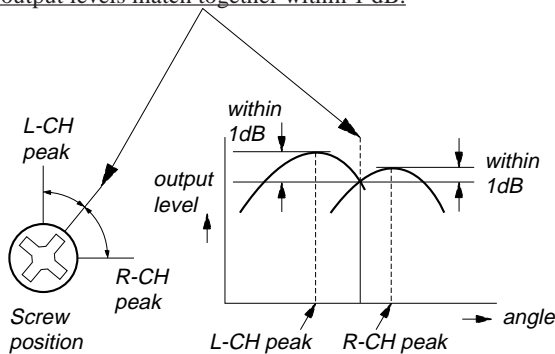
Record/Playback Head Azimuth Adjustment

Procedure:

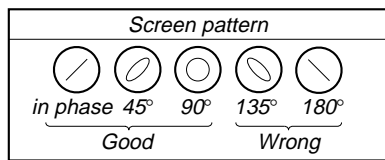
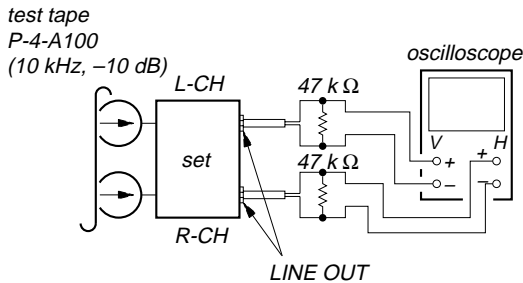
1. Mode : REV playback



2. Turn the adjustment screw for the maximum output levels. If these levels do not match, turn the adjustment screw until both of output levels match together within 1 dB.

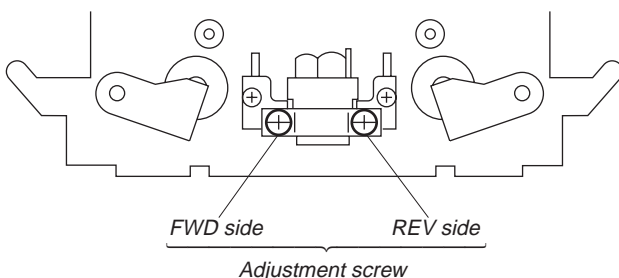


3. Phase Check
Mode : playback



4. Set in the FWD mode and repeat the step 1 to 3.
5. After the adjustment, lock the screw with locking compound.

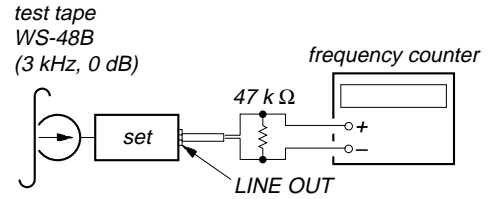
Adjustment Location: Record/Playback head



Tape Speed Adjustment

Procedure:

Mode: FWD playback

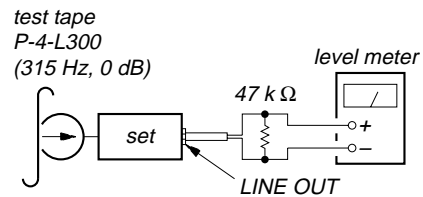


1. Set to FWD playback mode.
2. Adjust RV801 so that the frequency counter reading becomes $2,980 \pm 30$ Hz.
3. Confirm that the deviation between tape top and tape end is within 3%.

Playback Level Adjustment

Procedure:

Mode: FWD playback



Adjust RV151 (L-CH) and RV251 (R-CH) so that the reading on level meter meets the adjustment limits below.

Adjustment Limits:

LINE OUT level: -4.7 ± 0.5 dB (0.43 to 0.48 V)

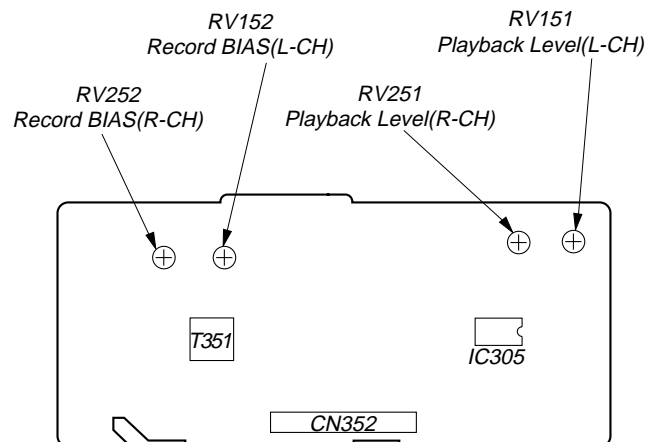
Level difference between channels: within 2 dB

Check that the LINE OUT level does not change even if Playback and Stop operation is repeated several times.

Adjustment Location: DECK board

Adjustment Location:

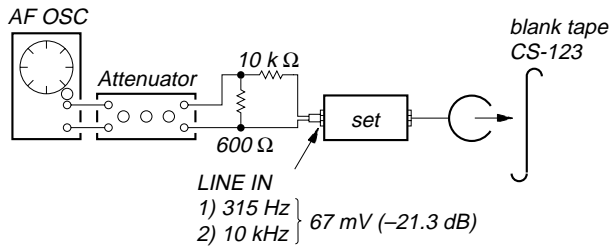
[DECK BOARD] (Component side)



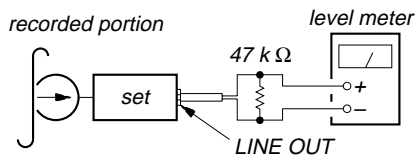
Record BIAS Adjustment

Procedure:

1. Mode : record



2. Mode: playback



3. Confirm playback the signal recorded in step 1 become adjustment level as follows.
4. If these levels do not adjustment level, adjust the RV152 (L-CH) and RV252 (R-CH) to repeat step 1 and 2.

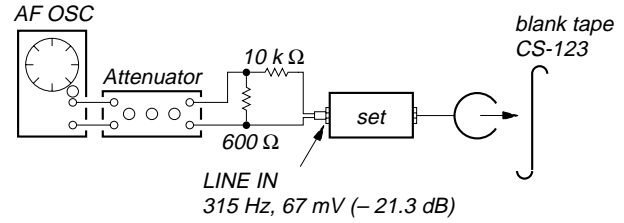
Adjustment Level: Playback output of 10 kHz to playback output of 315 Hz: ± 0.5 dB.

Adjustment Location: DECK board

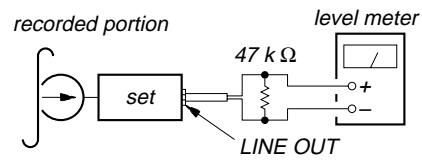
Record Level Adjustment

Procedure:

1. Mode : record



2. Mode: playback

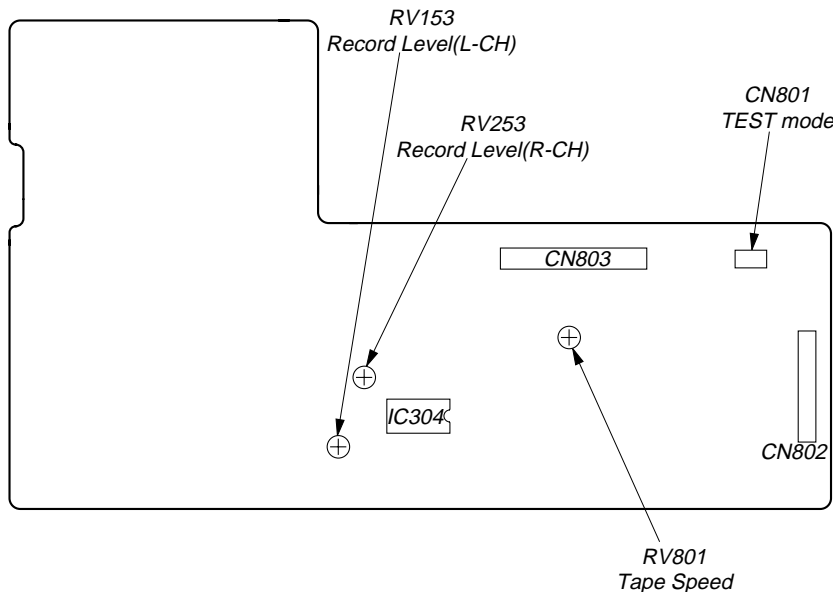


3. Confirm playback the signal recorded in step 1 become adjustment level as follows.
4. If these levels do not adjustment level, adjust RV153 (L-CH) and RV253 (R-CH) to repeat step 1 and 2.

Adjustment Level: -21.3 ± 0.5 dB (63 to 71 mV)

Adjustment Location: MAIN board

[MAIN BOARD] (Component side)



SECTION 5 DIAGRAMS

5-1. IC PIN FUNCTION DESCRIPTION MAIN BOARD IC101 M38172M4-180FP (SYSTEM CONTROL)

Pin No.	Pin Name	I/O	Function
1	—	—	Not used (Fixed at “L”)
2	—	—	
3	KEY-X	I	Key input (A/D convert input) *1
4	KEY-Y	I	
5	FWD TAB	I	REC proof detection input from S902 (FWD side) “H”: Not nail
6	CHROM SW	I	Tape type detection input from S903 “L”: Type I
7	RVS TAB	I	REC proof detection input from S904 (REV side) “H”: Not nail
8	—	—	Not used (Fixed at “L”)
9	PLAY SW	I	Playback and stop detection input from S907 “L”: Playback
10	TEST MODE	I	Test mode terminal Normal: “H” Test mode: “L”
11	POWER OUT	O	Audio and mechanism power on/off output “L”: Off (Not used)
12	POWER IN	I	Primary power on/off input “H”: On
13	CLOSE	O	Loading motor (M901) drive output *2
14	OPEN	O	
15	—	—	Not used (Fixed at “L”)
16	—	—	
17	—	—	
18	—	—	
19	—	—	
20	—	—	
21	(CLOCK)	O	Not used (Open)
22	(DATA)	O	Not used (Fixed at “H”)
23	RELAY	O	Relay drive output “L”: ON
24	BIAS	O	Control output to recording bias switch (Q352) “L”: ON
25	AU BUS OUT	O	Audio bus output
26	AU BUS IN	I	Audio bus input
27	RESET	I	Reset input
28	X CIN	I	Not used (Fixed at “L”)
29	X COUT	O	Not used (Open)
30	X IN	I	Main system clock input (4 MHz)
31	XOUT	O	Main system clock output (4 MHz)
32	V _{ss}	—	Ground
33	REC MUTE	O	Recording mute on/off control output “L”: Mute on
34	LINE MUTE	O	Line mute on/off control output “L”: Mute on
35	—	—	Not used (Fixed at “L”)
36	PB MUTE	O	Playback mute on/off control output “L”: Mute on
37	REC/PB	O	Mode control output to DOLBY NR amplifier (IC301) When recording: “H”
38	—	—	Not used (Open)
39	—	—	
40	—	—	Not used (Fixed at “L”)
41	POWER	O	Control output to ON/STANDBY LED (D857)
42	TAPE	O	Control output to TAPE LED (D856)
43	CD SYNC	O	Control output to CD SYNC LED (D855)
44	REC	O	Control output to REC LED (D854)
45	PAUSE	O	Control output to PAUSE (⏸) LED (D853)
46	REV	O	Control output to REV (⏮) LED (D852)

Pin No.	Pin Name	I/O	Function
47	FWD	O	Control output to FWD (▷) LED (D851)
48	—	—	Not used (Open)
49	—	—	
50	—	—	
51	—	—	
52	—	—	
53	—	—	
54	—	—	
55	—	—	
56	—	—	
57	—	—	
58	—	—	
59	—	—	
60	—	—	
61	—	—	
62	—	—	
63	—	—	
64	—	—	
65	TYPE I	O	Tape type output “H”: Normal position
66	TYPE II	O	Tape type output “H”: High position
67	(TYPE IV)	O	Not used (Fixed at “L”)
68	—	—	
69	—	—	
70	—	—	
71	SOLENOIDE	O	Plunger (PM901) drive output “H”: On
72	CAP.MOTOR	O	Capstan/reel motor (M902) drive output “H”: On
73	VCC	—	Power supply (+5V)
74	VEE	—	Ground
75	AVSS	—	Ground for A/D converter
76	VREF	—	Reference voltage (+5V) for A/D converter
77	HALF	I	Cassette half detection input from S905
78	AMS IN	I	AMS input
79	LIMIT SW	I	Loading detection input from S901 Open: “L”, Close: “M”, COM: “H”
80	PULSE	I	Rotary detection input from PH901

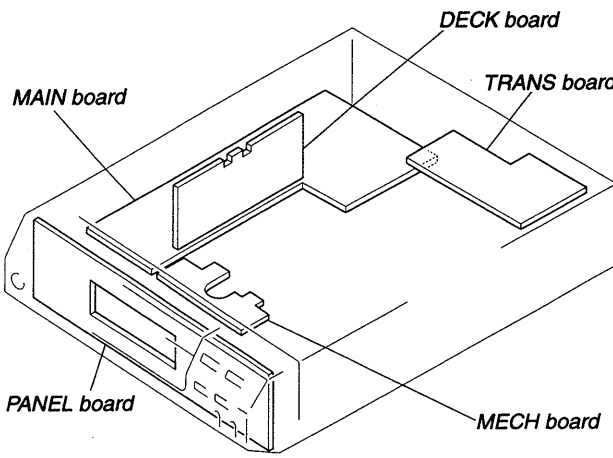
*1 Key Input

Input port \ Voltage	0 V	0.45 V	1.19 V	2.19 V	3.2 V	3.98 V	4.48 V	5.0 V
Pin ④, KEY-X	Open/Close ⊞	STOP □	PAUSE ▢	FWD ▷	REV ◁	CD SYNC	—	Not key input
Pin ③, KEY-Y	POWER ON/OFF	REW ◀◀	FF ▶▶	REC ●	DIRECTION ↔	—	—	DIRECTION ↻

*2 Loading Motor

	IN	OUT
CLOSE ⑬	H	L
OPEN ⑭	L	H

• Circuit Boards Location



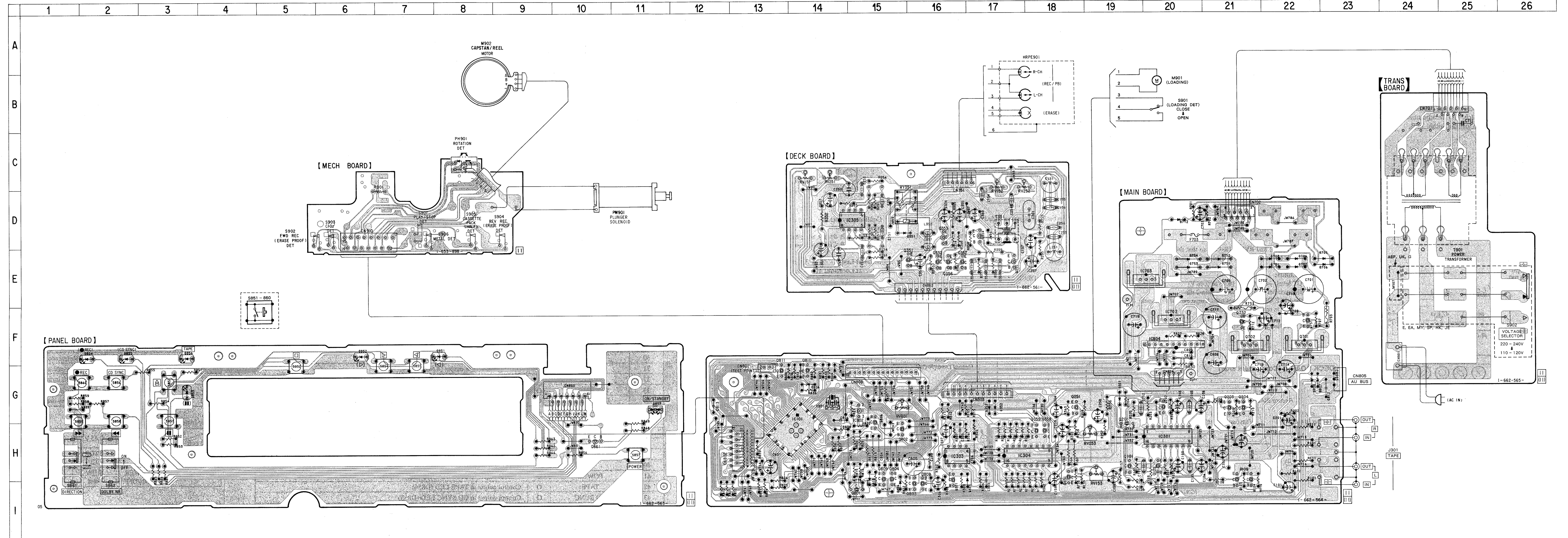
• Semiconductor Location

Ref. No.	Location	Ref. No.	Location
D301	G-19	IC703	E-20
D303	I-16	IC802	G-15
D351	D-15	IC804	F-20
D352	G-17		
D353	G-17	Q101	H-19
D701	E-22	Q102	H-20
D702	E-22	Q103	I-21
D703	E-22	Q104	I-21
D704	E-22	Q151	I-18
D705	E-23	Q201	H-19
D706	E-23	Q202	G-20
D709	F-22	Q203	G-21
D710	F-22	Q204	G-21
D712	D-20	Q251	G-18
D751	E-21	Q301	I-16
D752	E-21	Q351	E-16
D753	E-20	Q352	E-16
D754	E-20	Q353	D-16
D803	I-15	Q354	D-17
D804	I-15	Q355	E-17
D806	G-14	Q356	E-16
D807	G-22	Q357	E-16
D808	G-22	Q358	H-18
D809	G-14	Q359	H-18
D851	F-8	Q701	F-22
D852	F-6	Q702	F-21
D853	G-3	Q751	F-22
D854	F-2	Q752	F-21
D855	F-2	Q801	I-15
D856	F-3	Q802	H-15
D857	G-11	Q803	I-16
		Q804	I-15
IC101	H-14	Q806	H-15
IC301	H-20	Q808	I-16
IC303	H-16	Q809	I-15
IC304	H-18	Q810	G-14
IC305	D-15	Q811	G-13
IC702	F-20	Q861	H-10

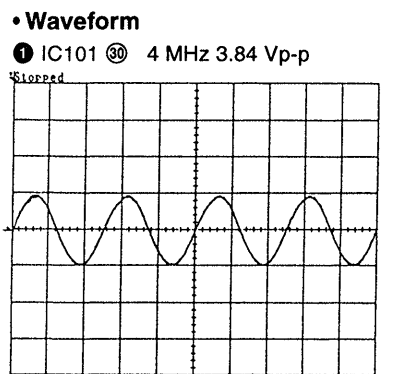
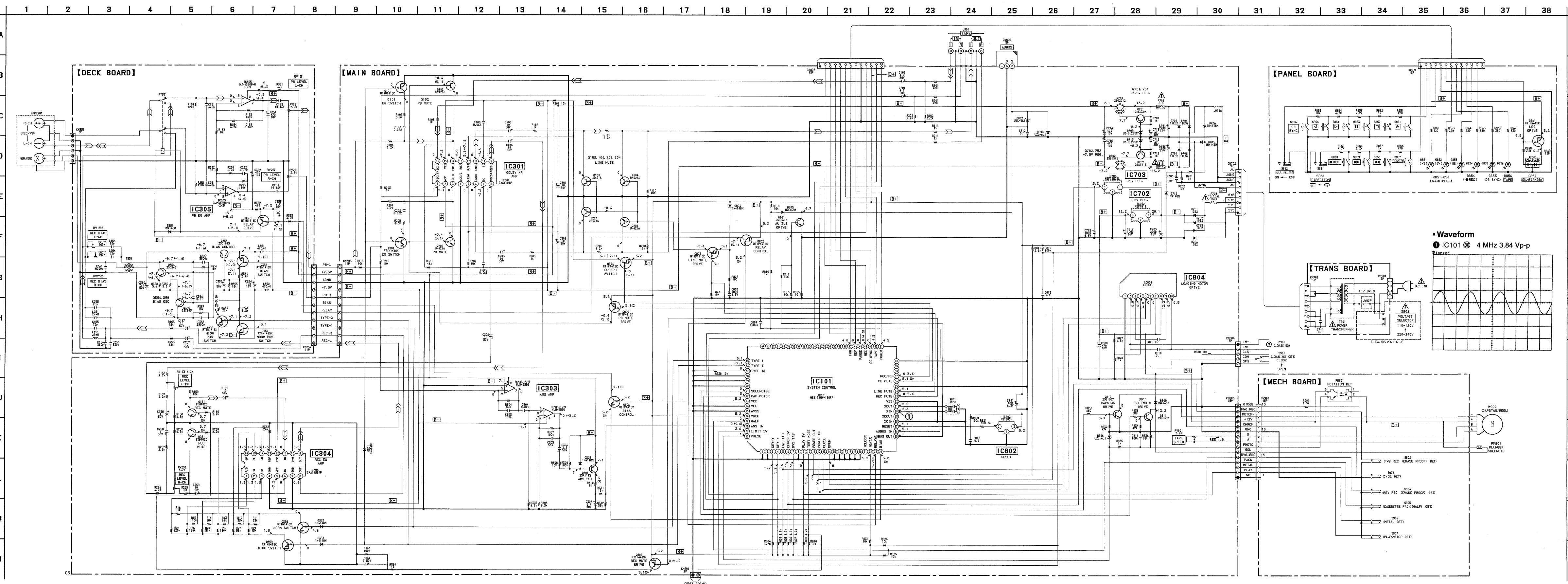
Note on Printed Wiring Board:

- : parts extracted from the component side.
- : parts extracted from the conductor side.
- : parts mounted on the conductor side.
- : indicates side identified with part number.
- △ : internal component.

5-2. PRINTED WIRING BOARDS

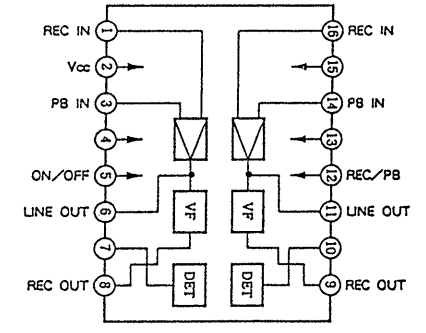


5-3. SCHEMATIC DIAGRAM

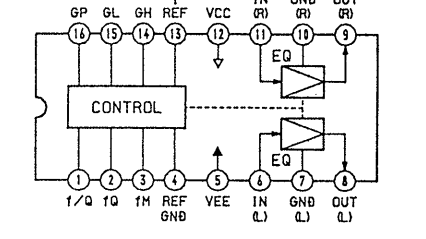


• IC Block Diagrams

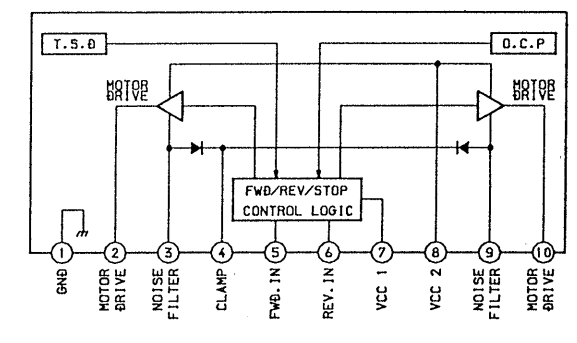
IC301 CXA1101P



IC304 CXA1198AP



IC804 LB1641



- Note on Schematic Diagram:**
- All capacitors are in μF unless otherwise noted. pF: μpF
 - 50 WV or less are not indicated except for electrolytics and tantalums.
 - All resistors are in Ω and $1/4$ W or less unless otherwise specified.
 - Δ : internal component.
 - \square : fusible resistor.
 - \square : panel designation.

Note: The components identified by mark Δ or dotted line with mark Δ are critical for safety. Replace only with part number specified.

- \square : B+ Line.
- \square : B- Line.
- \square : adjustment for repair.
- Voltages and waveforms are dc with respect to ground under no-signal conditions.
- no mark : Playback (FWD)
- () : Record (FWD)
- * : Impossible to measure
- Voltages are taken with a VOM (input impedance 10 M Ω). Voltage variations may be noted due to normal production tolerances.
- Waveforms are taken with an oscilloscope.
- Circled numbers refer to waveforms.
- Signal path.
- \square : PB
- \square : REC

SECTION 6 EXPLODED VIEWS

NOTE:

- -XX and -X mean standardized parts, so they may have some difference from the original one.
- Color Indication of Appearance Parts Example:
KNOB, BALANCE (WHITE) . . . (RED)

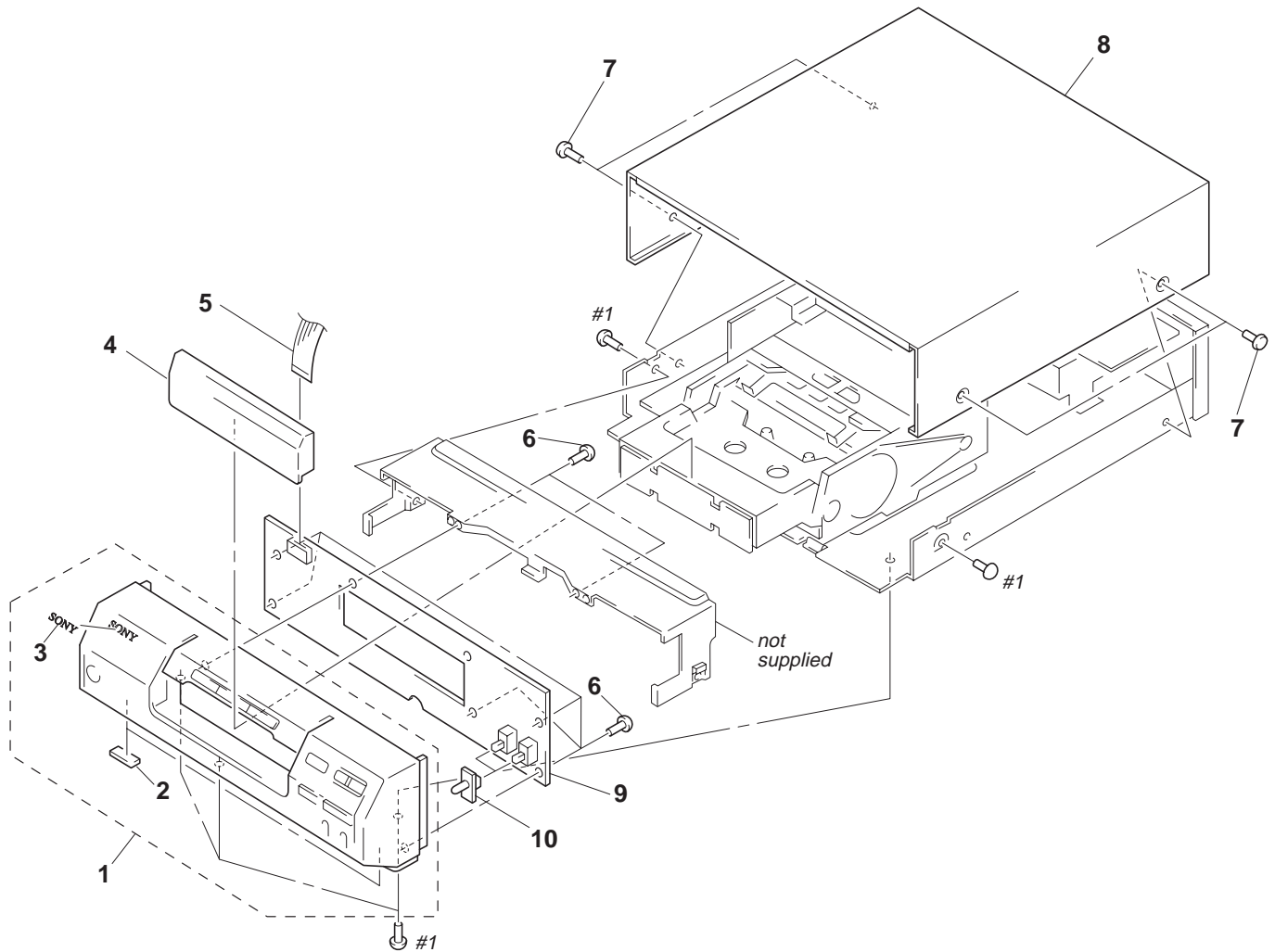
↑	↑
Parts Color	Cabinet's Color

- Abbreviation
G: German EA: Saudi Arabia
MY: Malaysia SP: Singapore
HK: Hong Kong JE: Tourist

- Items marked “*” are not stocked since they are seldom required for routine service. Some delay should be anticipated when ordering these items.
- The mechanical parts with no reference number in the exploded views are not supplied.
- Hardware (# mark) list and accessories and packing materials are given in the last of the electrical parts list.

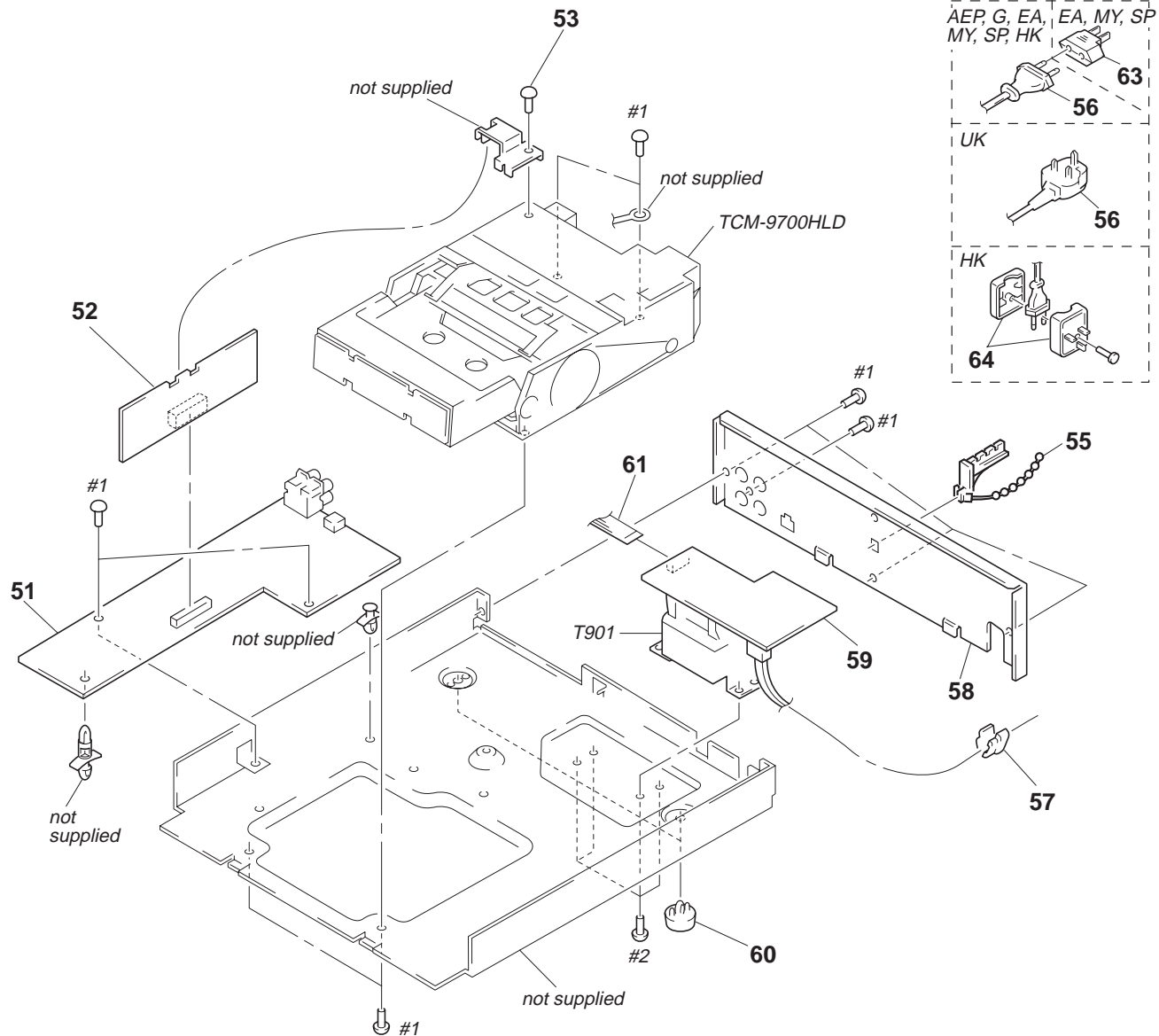
The components identified by mark Δ or dotted line with mark Δ are critical for safety. Replace only with part number specified.

(1) CASE, FRONT PANEL SECTION



Ref. No.	Part No.	Description	Remark	Ref. No.	Part No.	Description	Remark
1	X-3372-569-2	PANEL ASSY, FRONT		7	3-363-099-01	SCREW (CASE 3 TP2)	
3	4-962-708-01	EMBLEM (4-A), SONY		* 8	3-938-535-11	CASE	
4	3-938-526-01	PANEL, LOADING		* 9	A-2007-619-A	PANEL BOARD, COMPLETE (EA, MY, SP, HK, JE)	
5	1-769-974-11	WIRE (FLAT TYPE) (13 CORE)		* 9	A-2007-630-A	PANEL BOARD, COMPLETE (AEP, UK, G)	
6	4-951-620-01	SCREW (2.6X8), +BVTP		10	3-917-216-02	KNOB (TIMER)	

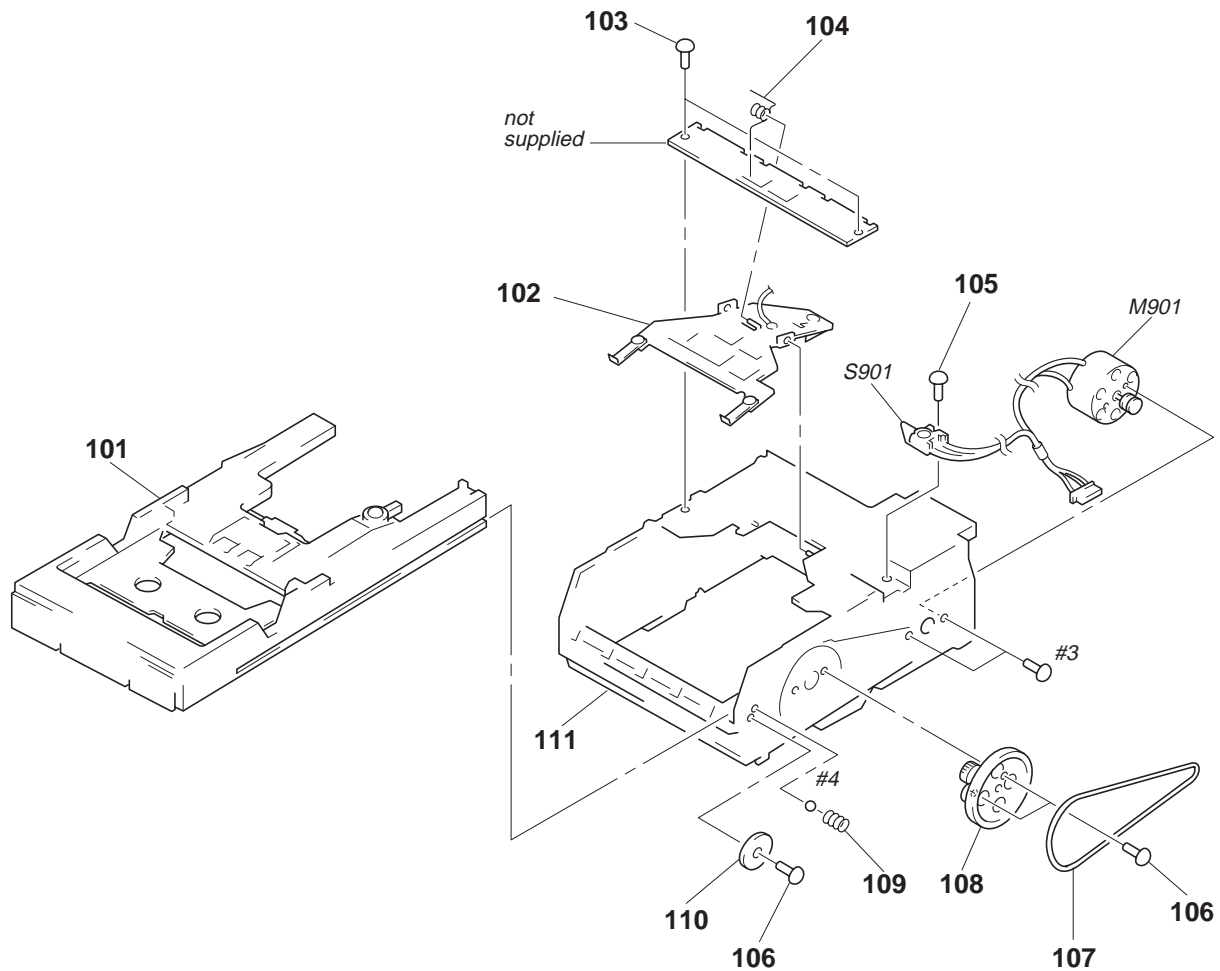
(2) CHASSIS SECTION



Ref. No.	Part No.	Description	Remark	Ref. No.	Part No.	Description	Remark
* 51	A-2007-620-A	MAIN BOARD, COMPLETE (EA, MY, SP, HK, JE)		* 58	3-938-537-21	PANEL, BACK (UK)	
* 51	A-2007-631-A	MAIN BOARD, COMPLETE (AEP, UK, G)		* 58	3-938-537-31	PANEL, BACK (AEP)	
* 52	A-2007-622-A	DECK BOARD, COMPLETE (EA, MY, SP, HK, JE)		* 58	3-938-537-41	PANEL, BACK (G)	
* 52	A-2007-629-A	DECK BOARD, COMPLETE (AEP, UK, G)		* 58	3-938-537-51	PANEL, BACK (HK)	
53	4-951-620-01	SCREW (2.6X8), +BVTP		* 59	1-662-565-11	TRANS BOARD	
55	4-956-370-02	BAND, PLUG FIXED		60	4-965-822-01	FOOT	
△56	1-574-805-11	CORD, POWER (AEP, G, EA, MY, SP, HK)		61	1-769-905-11	WIRE (FLAT TYPE) (9 CORE)	
△56	1-575-653-11	CORD, POWER (JE)		△62	1-569-007-11	ADAPTOR, CONVERSION 2P (JE)	
△56	1-696-570-21	CORD, POWER (UK)		△63	1-569-008-11	ADAPTOR, CONVERSION 2P (EA, MY, SP)	
* 57	3-703-244-00	BUSHING (2104), CORD (AEP, UK, G, EA, MY, SP, HK)		△64	1-770-019-11	ADAPTOR, CONVERSION PLUG 3P (HK)	
* 57	3-703-571-11	BUSHING (S) (4516), CORD (JE)		△T901	1-429-908-11	TRANSFORMER, POWER (EA, MY, SP, JE)	
* 58	3-938-537-11	PANEL, BACK (EA, MY, SP, JE)		△T901	1-429-909-11	TRANSFORMER, POWER (AEP, UK, G)	

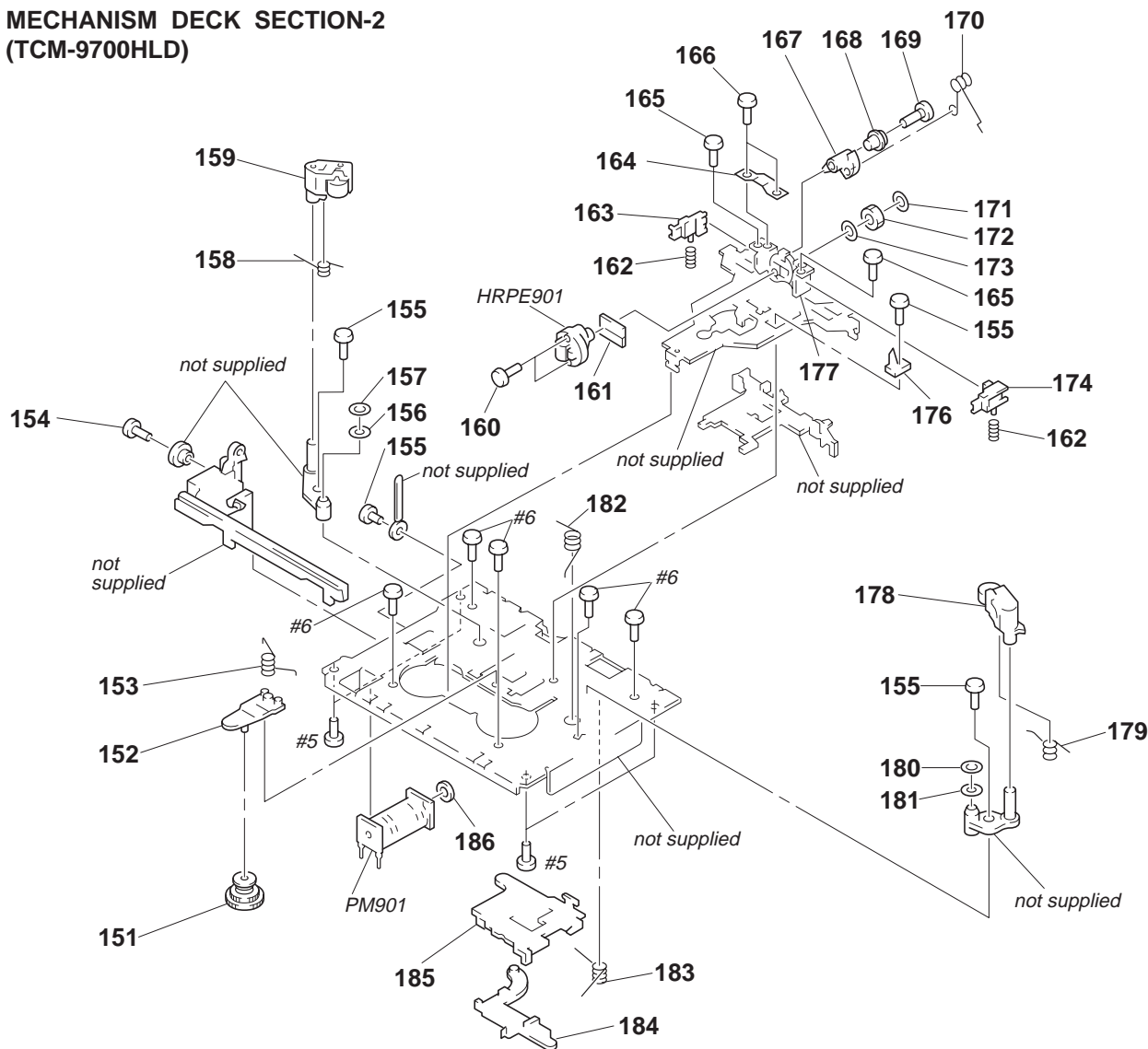
The components identified by mark △ or dotted line with mark △ are critical for safety.
Replace only with part number specified.

**(3) MECHANISM DECK SECTION-1
(TCM-9700HLD)**



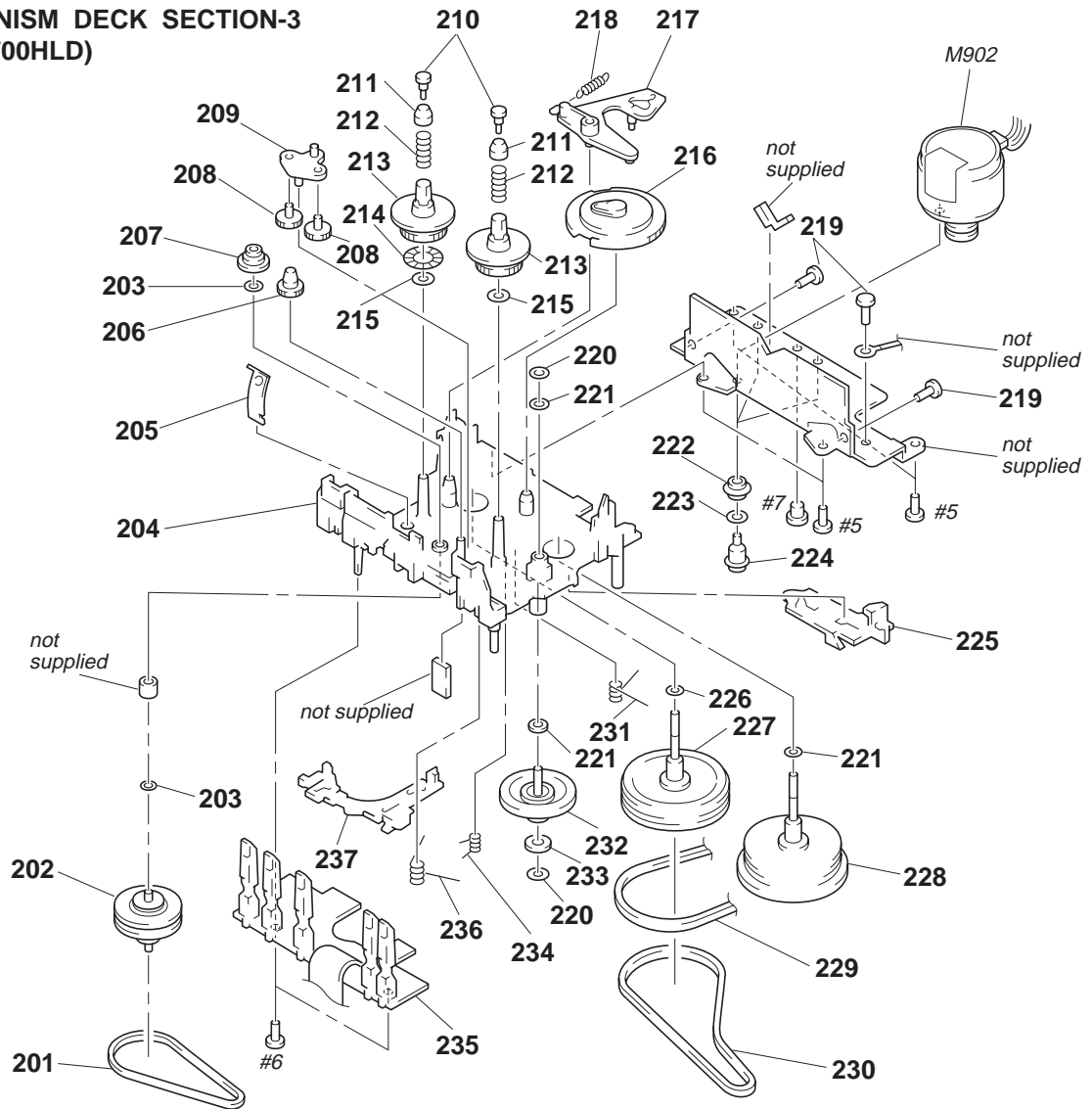
Ref. No.	Part No.	Description	Remark	Ref. No.	Part No.	Description	Remark
101	A-2004-430-A	TRAY (A) ASSY		108	X-3369-090-1	GEAR ASSY	
102	A-2004-429-A	CLAMP (B) ASSY		109	3-918-629-01	SPRING (A), COMPRESSION	
103	3-917-502-01	SCREW (2X8), +BTT		110	3-918-630-01	WASHER, FLAT	
104	3-917-501-01	SPRING, TOGGLE		111	3-917-496-01	CHASSIS (MAIN)	
105	3-917-498-01	SCREW (2.6X6), +BTT		S901	1-571-300-21	SWITCH, ROTARY	
106	3-917-497-01	SCREW (2.6X5), +BTT		M901	X-3369-091-1	MOTOR ASSY (LOADING)	
107	3-917-499-01	BELT					

**(4) MECHANISM DECK SECTION-2
(TCM-9700HLD)**



Ref. No.	Part No.	Description	Remark	Ref. No.	Part No.	Description	Remark
151	A-2004-436-A	GEAR ASSY, PLAY		170	3-917-530-01	SPRING (RETURN), TOGGLE	
152	3-917-549-01	ARM, PLAY		171	3-917-534-01	WASHER, POLY-SLIDER	
153	3-917-553-01	SPRING (PLAY ARM), TOGGLE		172	3-917-527-01	GEAR (ROTATION)	
154	3-917-566-01	SCREW (2X6), +PTT		173	3-917-540-01	WASHER, POLY-SLIDER	
155	3-917-565-01	SCREW (2X4), +PTT		174	3-917-538-01	GUIDE (L), TAPE	
156	3-917-558-01	WASHER, POLY-SLIDER		176	3-917-529-01	GUIDE (CASSETTE)	
157	3-917-561-01	WASHER, NYLON		177	X-3369-095-1	PLATE ASSY, HEAD	
158	3-917-556-01	SPRING (P ROLLER ARM R), TOGGLE		178	A-2004-435-A	ARM (L) ASSY, P ROLLER	
159	A-2004-434-A	ARM (R) ASSY, P ROLLER		179	3-917-557-01	SPRING (P ROLLER ARM L), TOGGLE	
160	3-917-533-01	SCREW (HEAD RVS)		180	3-917-562-01	WASHER, NYLON	
161	3-917-532-01	CLAMP, HEAD WIRE		181	3-917-559-01	WASHER, POLY-SLIDER	
162	3-917-537-01	SPRING (TAPE GUIDE), COMPRESSION		182	3-917-555-01	SPRING (HEAD CHASSIS H), TOGGLE	
163	3-917-539-01	GUIDE (R), TAPE		183	3-917-554-01	SPRING (SHIFT H), TOGGLE	
164	3-917-524-01	SPRING (AZIMUTH)		184	3-917-550-01	ARM, SELECT	
165	3-917-541-01	SCREW (2X5)		185	3-917-547-01	LEVER, SHIFT	
166	3-917-531-01	SCREW (AZIMUTH)		186	3-917-568-01	WASHER, POLY-SLIDER	
167	3-917-528-01	GEAR (RETURN)		HRPE901	1-500-156-11	HEAD (RECORD/ PLAY/ EARTH)	
168	3-917-526-01	COLLAR		PM901	3-917-560-01	SOLENOID, PLUNGER	
169	3-917-536-01	SCREW (POWER LOCK)					

**(5) MECHANISM DECK SECTION-3
(TCM-9700HLD)**



Ref. No.	Part No.	Description	Remark	Ref. No.	Part No.	Description	Remark
201	3-917-608-01	BELT (HK-3), DRIVE		220	3-917-604-01	WASHER, POLY-SLIDER	
202	X-3369-099-1	CLUTCH (HK) ASSY		221	3-701-437-11	WASHER	
203	3-917-599-01	WASHER, POLY-SLIDER		222	3-917-623-01	CUSHION, MOTOR RUBBER	
* 204	X-3369-098-1	BASE (HK) ASSY, MECHANICAL		223	3-917-622-01	WASHER (B), FLAT	
205	3-917-580-01	SPRING (PACK KH)		224	3-917-620-01	SCREW (MOTOR), STEP	
206	3-917-582-01	GEAR, REW		225	3-917-588-01	SELECT, SHIFT LEVER	
207	3-917-581-01	GEAR, CLUTCH		226	3-917-601-01	WASHER, POLY-SLIDER	
208	3-917-584-01	GEAR, FR		227	3-917-592-01	FLYWHEEL (RD) (HK) ASSY	
209	3-917-583-01	ARM, FR		228	3-917-593-01	FLYWHEEL (LD) (HK) ASSY	
210	3-917-587-01	BUSHING (B), REEL		229	3-917-606-01	BELT (HK-1), DRIVE	
211	3-917-586-01	CAP (A), REEL		230	3-917-607-01	BELT (HK-2), DRIVE	
212	3-917-594-01	SPRING (REEL C), COMPRESSION		231	3-917-596-01	SPRING, TOGGLE	
213	3-917-585-01	GEAR, REEL		232	3-917-603-01	PULLEY (FLYWHEEL C) ASSY	
214	3-917-600-01	SEAL, REFLECT		233	3-917-605-01	WASHER, NYLON	
215	3-917-602-01	FELT, REEL		234	3-917-595-01	SPRING (CLUTCH ARM), TOGGLE	
216	3-917-589-01	GEAR, PLAY CAM		* 235	1-653-898-11	MECH BOARD	
217	3-917-590-01	ARM, TRIGGER		236	3-917-598-01	SPRING (BRAKE ARM), TOGGLE	
218	3-917-597-01	SPRING (TRIGGER ARM), TENSION		237	3-917-591-01	ARM, BRAKE	
219	3-917-565-01	SCREW (2X4), +PTT		M902	X-3369-100-1	MOTOR (HK) ASSY (CAPSTAN/ REEL)	

DECK

SECTION 7 ELECTRICAL PARTS LIST

NOTE:

- Due to standardization, replacements in the parts list may be different from the parts specified in the diagrams or the components used on the set.
- -XX and -X mean standardized parts, so they may have some difference from the original one.
- RESISTORS
All resistors are in ohms.
METAL: Metal-film resistor.
METAL OXIDE: Metal oxide-film resistor.
F: nonflammable
- Items marked "*" are not stocked since they are seldom required for routine service.
Some delay should be anticipated when ordering these items.

- SEMICONDUCTORS
In each case, u: μ , for example:
uA. . . : μ A. . . uPA. . . : μ PA. . .
uPB. . . : μ PB. . . uPC. . . : μ PC. . .
uPD. . . : μ PD. . .
- CAPACITORS
uF: μ F
- COILS
uH: μ H
- Abbreviation
G : German EA : Sausi Arabia
HK : Hong Kong SP : Singapore
MY : Malaysia JE : Tourist

The components identified by mark Δ or dotted line with mark Δ are critical for safety.
Replace only with part number specified.

When indicating parts by reference number, please include the board.

Ref. No.	Part No.	Description	Remark	Ref. No.	Part No.	Description	Remark
*	A-2007-629-A	DECK BOARD, COMPLETE (AEP, G, UK)		* CN850	1-695-374-31	PIN, CONNECTOR (PC BOARD) 13P	
*	A-2007-622-A	DECK BOARD, COMPLETE (JE, HK, EA, SP, MY) *****				< DIODE >	
		< CAPACITOR >		D351	8-719-987-63	DIODE 1N4148M	
						< IC >	
C151	1-130-467-00	MYLAR 470PF 5% 50V		IC305	8-759-710-59	IC NJM4580D-D	
C152	1-137-372-11	FILM 0.022uF 5% 50V				< COIL >	
C153	1-107-714-11	ELECT 10uF 20% 16V		L151	1-410-780-11	INDUCTOR 27mH	
C154	1-107-610-11	CERAMIC 82PF 5% 500V		L251	1-410-780-11	INDUCTOR 27mH	
C155	1-107-609-11	CERAMIC 75PF 5% 500V		L351	1-414-223-11	INDUCTOR 470uH	
C156	1-102-820-00	CERAMIC 330PF 5% 50V		L352	1-414-223-11	INDUCTOR 470uH	
C157	1-124-907-11	ELECT 10uF 20% 50V				< TRANSISTOR >	
C251	1-130-467-00	MYLAR 470PF 5% 50V		Q351	8-729-661-94	TRANSISTOR RT1N141SK-TP	
C252	1-137-372-11	FILM 0.022uF 5% 50V		Q352	8-729-661-98	TRANSISTOR RT1P141SK-TP	
C253	1-107-714-11	ELECT 10uF 20% 16V		Q353	8-729-119-78	TRANSISTOR 2SC403SP-51	
C254	1-107-610-11	CERAMIC 82PF 5% 500V		Q354	8-729-194-57	TRANSISTOR 2SC945-P	
C255	1-107-609-11	CERAMIC 75PF 5% 500V		Q355	8-729-194-57	TRANSISTOR 2SC945-P	
C256	1-102-820-00	CERAMIC 330PF 5% 50V		Q356	8-729-661-94	TRANSISTOR RT1N141SK-TP	
C257	1-124-907-11	ELECT 10uF 20% 50V		Q357	8-729-661-94	TRANSISTOR RT1N141SK-TP	
C351	1-124-472-11	ELECT 470uF 20% 10V				< RESISTOR >	
C352	1-124-472-11	ELECT 470uF 20% 10V		R151	1-247-881-00	CARBON 120K 5% 1/4W	
C353	1-126-961-11	ELECT 2.2uF 20% 50V		R152	1-249-404-00	CARBON 82 5% 1/4W	
C354	1-104-665-11	ELECT 100uF 20% 16V		R153	1-247-882-11	CARBON 130K 5% 1/4W	
C355	1-124-903-11	ELECT 1uF 20% 50V		R154	1-247-850-11	CARBON 6.2K 5% 1/4W	
C356	1-137-370-11	FILM 0.01uF 5% 50V		R155	1-249-430-11	CARBON 12K 5% 1/4W	
C357	1-137-436-11	FILM 0.0039uF 5% 50V		R251	1-247-881-00	CARBON 120K 5% 1/4W	
C358	1-137-436-11	FILM 0.0039uF 5% 50V		R252	1-249-404-00	CARBON 82 5% 1/4W	
C360	1-126-961-11	ELECT 2.2uF 20% 50V		R253	1-247-882-11	CARBON 130K 5% 1/4W	
C361	1-136-562-11	FILM 0.0082uF 5% 630V		R254	1-247-850-11	CARBON 6.2K 5% 1/4W	
		< CONNECTOR >					
* CN351	1-564-708-11	PIN, CONNECTOR (SMALL TYPE) 6P					
CN352	1-691-181-11	CONNECTOR (BOARD TO BOARD) 11P					

Ref. No.	Part No.	Description				Remark	Ref. No.	Part No.	Description				Remark
R255	1-249-430-11	CARBON	12K	5%	1/4W	C301	1-124-907-11	ELECT	10uF	20%	50V		
R351	1-249-413-11	CARBON	470	5%	1/4W	C302	1-124-907-11	ELECT	10uF	20%	50V		
R352	1-249-413-11	CARBON	470	5%	1/4W	C303	1-162-282-31	CERAMIC	100PF	10%	50V		
R353	1-249-425-11	CARBON	4.7K	5%	1/4W	C304	1-161-494-00	CERAMIC	0.022uF		25V		
R354	1-247-840-00	CARBON	2.4K	5%	1/4W	C305	1-162-217-31	CERAMIC	56PF	5%	50V		
R355	1-249-432-11	CARBON	18K	5%	1/4W	C306	1-126-961-11	ELECT	2.2uF	20%	50V		
R356	1-249-432-11	CARBON	18K	5%	1/4W	C307	1-126-961-11	ELECT	2.2uF	20%	50V		
R357	1-249-432-11	CARBON	18K	5%	1/4W	C364	1-124-903-11	ELECT	1uF	20%	50V		
R358	1-249-390-11	CARBON	5.6	5%	1/4W	C701	1-126-768-11	ELECT	2200uF	20%	16V		
R359	1-249-390-11	CARBON	5.6	5%	1/4W	C702	1-126-768-11	ELECT	2200uF	20%	16V		
R360	1-249-433-11	CARBON	22K	5%	1/4W	C703	1-124-903-11	ELECT	1uF	20%	50V		
R361	1-247-843-11	CARBON	3.3K	5%	1/4W	C705	1-126-943-11	ELECT	2200uF	20%	25V		
		< VARIABLE RESISTOR >				C712	1-104-664-11	ELECT	47uF	20%	25V		
RV151	1-230-495-11	RES, ADJ, CARBON 2.2K				C713	1-104-664-11	ELECT	47uF	20%	25V		
RV152	1-230-499-11	RES, ADJ, CARBON 100K				C714	1-124-472-11	ELECT	470uF	20%	10V		
RV251	1-230-495-11	RES, ADJ, CARBON 2.2K				C715	1-124-472-11	ELECT	470uF	20%	10V		
RV252	1-230-499-11	RES, ADJ, CARBON 100K				C717	1-126-942-61	ELECT	1000uF	20%	16V		
		< RELAY >				C719	1-124-471-00	ELECT	1000uF	20%	6.3V		
						C801	1-126-941-11	ELECT	470uF	20%	6.3V		
						C804	1-162-294-31	CERAMIC	0.001uF	10%	50V		
RY351	1-515-614-11	RELAY				C805	1-126-916-11	ELECT	1000uF	20%	6.3V		
		< TRANSFORMER >				C806	1-164-159-11	CERAMIC	0.1uF		50V		
						C808	1-126-941-11	ELECT	470uF	20%	16V		
T351	1-429-316-11	TRANSFORMER, BIAS OSCILLATION				C809	1-164-159-11	CERAMIC	0.1uF		50V		
						C810	1-164-159-11	CERAMIC	0.1uF		50V		
						C811	1-162-282-31	CERAMIC	100PF	10%	50V		
						C812	1-164-159-11	CERAMIC	0.1uF		50V		
						C813	1-164-159-11	CERAMIC	0.1uF		50V		
								< CONNECTOR >					
						CN303	1-691-168-11	PIN, CONNECTOR 11P					
						CN702	1-568-852-11	PIN, CONNECTOR (PC BOARD) 9P					
						CN801	1-564-505-11	PLUG, CONNECTOR 2P					
						CN802	1-695-336-31	PIN, CONNECTOR (PC BOARD) 13P					
						* CN803	1-564-717-11	PIN, CONNECTOR (SMALL TYPE)15P					
						CN804	1-564-707-11	PIN, CONNECTOR (SMALL TYPE) 5P					
						* CN805	1-565-561-11	PIN, CONNECTOR 3P					
								< DIODE >					
						D301	8-719-987-63	DIODE 1N4148M					
						D303	8-719-987-63	DIODE 1N4148M					
						D352	8-719-987-63	DIODE 1N4148M					
						D353	8-719-987-63	DIODE 1N4148M					
						D701	8-719-200-82	DIODE 11ES2					
						D702	8-719-200-82	DIODE 11ES2					
						D703	8-719-200-82	DIODE 11ES2					
						D704	8-719-200-82	DIODE 11ES2					
						D705	8-719-987-63	DIODE 1N4148M					
C101	1-126-963-11	ELECT	4.7uF	20%	50V								
C102	1-137-372-11	FILM	0.022uF	5%	50V								
C103	1-124-907-11	ELECT	10uF	20%	50V								
C105	1-136-163-00	FILM	0.068uF	5%	50V								
C106	1-124-907-11	ELECT	10uF	20%	50V								
C158	1-124-903-11	ELECT	1uF	20%	50V								
C159	1-124-907-11	ELECT	10uF	20%	50V								
C201	1-126-963-11	ELECT	4.7uF	20%	50V								
C202	1-137-372-11	FILM	0.022uF	5%	50V								
C203	1-124-907-11	ELECT	10uF	20%	50V								
C205	1-136-163-00	FILM	0.068uF	5%	50V								
C206	1-124-907-11	ELECT	10uF	20%	50V								
C258	1-124-903-11	ELECT	1uF	20%	50V								
C259	1-124-907-11	ELECT	10uF	20%	50V								

MAIN

Ref. No.	Part No.	Description	Remark	Ref. No.	Part No.	Description	Remark
D706	8-719-987-63	DIODE 1N4148M		Q751	8-729-620-05	TRANSISTOR 2SC2603-EF	
D709	8-719-013-13	DIODE UZ-8.2BSC-TP		Q752	8-729-119-76	TRANSISTOR 2SA1175-HFE	
D710	8-719-013-13	DIODE UZ-8.2BSC-TP		Q801	8-729-620-05	TRANSISTOR 2SC2603-EF	
D712	8-719-987-63	DIODE 1N4148M		Q802	8-729-661-97	TRANSISTOR RT1P441SK-TP	
D751	8-719-200-02	DIODE 10E2		Q803	8-729-661-98	TRANSISTOR RT1P141SK-TP	
D752	8-719-200-02	DIODE 10E2		Q804	8-729-661-97	TRANSISTOR RT1P441SK-TP	
D753	8-719-200-02	DIODE 10E2		Q806	8-729-661-96	TRANSISTOR RT1N441SK-TP	
D754	8-719-200-02	DIODE 10E2		Q808	8-729-661-97	TRANSISTOR RT1P441SK-TP	
D803	8-719-987-63	DIODE 1N4148M		Q809	8-729-661-97	TRANSISTOR RT1P441SK-TP	
D804	8-719-987-63	DIODE 1N4148M		Q810	8-729-801-93	TRANSISTOR 2SD1387	
D806	8-719-933-33	DIODE HZS6A1L		Q811	8-729-801-93	TRANSISTOR 2SD1387	
D807	8-719-933-33	DIODE HZS6A1L				< RESISTOR >	
D808	8-719-933-33	DIODE HZS6A1L		R11	1-249-435-11	CARBON 33K 5%	1/4W
D809	8-719-987-63	DIODE 1N4148M		R12	1-249-435-11	CARBON 33K 5%	1/4W
		< FUSE >		R13	1-247-874-11	CARBON 62K 5%	1/4W
△F703	1-532-237-00	FUSE, TIME LAG (3.15A 250V)		R14	1-249-439-11	CARBON 68K 5%	1/4W
		< IC >		R15	1-247-880-11	CARBON 110K 5%	1/4W
IC101	8-759-436-50	IC M38172M4-180FP		R16	1-247-878-00	CARBON 91K 5%	1/4W
IC301	8-752-057-19	IC CXA1101P		R21	1-247-870-11	CARBON 43K 5%	1/4W
IC303	8-759-634-51	IC M5218AP		R22	1-249-438-11	CARBON 56K 5%	1/4W
IC304	8-752-060-64	IC CXA1198AP		R23	1-247-885-00	CARBON 180K 5%	1/4W
IC702	8-759-231-58	IC TA7812S		R24	1-247-872-11	CARBON 51K 5%	1/4W
IC703	8-759-604-35	IC M5F78M05L		R25	1-247-883-00	CARBON 150K 5%	1/4W
IC802	8-759-165-85	IC PST600H-T		R26	1-247-887-00	CARBON 220K 5%	1/4W
IC804	8-759-822-09	IC LB1641		R101	1-249-437-11	CARBON 47K 5%	1/4W
		< JACK >		R102	1-249-421-11	CARBON 2.2K 5%	1/4W
J301	1-778-613-11	JACK, PIN 4P (TAPE)		R103	1-249-417-11	CARBON 1K 5%	1/4W
		< TRANSISTOR >		R104	1-249-421-11	CARBON 2.2K 5%	1/4W
Q101	8-729-661-94	TRANSISTOR RT1N141SK-TP		R105	1-247-843-11	CARBON 3.3K 5%	1/4W
Q102	8-729-900-74	TRANSISTOR DTC143TS		R108	1-249-417-11	CARBON 1K 5%	1/4W
Q103	8-729-900-74	TRANSISTOR DTC143TS		R109	1-249-418-11	CARBON 1.2K 5%	1/4W
Q104	8-729-900-74	TRANSISTOR DTC143TS		R110	1-249-431-11	CARBON 15K 5%	1/4W
Q151	8-729-142-25	TRANSISTOR 2SD1020-HFE		R111	1-249-417-11	CARBON 1K 5%	1/4W
Q201	8-729-661-94	TRANSISTOR RT1N141SK-TP		R115	1-249-429-11	CARBON 10K 5%	1/4W
Q202	8-729-900-74	TRANSISTOR DTC143TS		R156	1-249-425-11	CARBON 4.7K 5%	1/4W
Q203	8-729-900-74	TRANSISTOR DTC143TS		R157	1-249-421-11	CARBON 2.2K 5%	1/4W
Q204	8-729-900-74	TRANSISTOR DTC143TS		R158	1-249-427-11	CARBON 6.8K 5%	1/4W
Q251	8-729-142-25	TRANSISTOR 2SD1020-HFE		R159	1-249-429-11	CARBON 10K 5%	1/4W
Q301	8-729-119-76	TRANSISTOR 2SA1175-HFE		R160	1-249-421-11	CARBON 2.2K 5%	1/4W
Q358	8-729-661-94	TRANSISTOR RT1N141SK-TP		R201	1-249-437-11	CARBON 47K 5%	1/4W
Q359	8-729-661-94	TRANSISTOR RT1N141SK-TP		R202	1-249-421-11	CARBON 2.2K 5%	1/4W
Q701	8-729-209-15	TRANSISTOR 2SD2012		R203	1-249-417-11	CARBON 1K 5%	1/4W
Q702	8-729-141-83	TRANSISTOR 2SB1094-LK		R204	1-249-421-11	CARBON 2.2K 5%	1/4W
				R205	1-247-843-11	CARBON 3.3K 5%	1/4W
				R208	1-249-417-11	CARBON 1K 5%	1/4W
				R209	1-249-418-11	CARBON 1.2K 5%	1/4W
				R210	1-249-431-11	CARBON 15K 5%	1/4W

The components identified by mark △ or dotted line with mark △ are critical for safety.
Replace only with part number specified.

Ref. No.	Part No.	Description	Remark
R211	1-249-417-11	CARBON	1K 5% 1/4W
R215	1-249-429-11	CARBON	10K 5% 1/4W
R256	1-249-425-11	CARBON	4.7K 5% 1/4W
R257	1-249-421-11	CARBON	2.2K 5% 1/4W
R258	1-249-427-11	CARBON	6.8K 5% 1/4W
R259	1-249-429-11	CARBON	10K 5% 1/4W
R260	1-249-421-11	CARBON	2.2K 5% 1/4W
R301	1-215-460-00	METAL	43K 1% 1/4W
R302	1-249-429-11	CARBON	10K 5% 1/4W
R303	1-249-429-11	CARBON	10K 5% 1/4W
R304	1-249-440-11	CARBON	82K 5% 1/4W
R305	1-249-427-11	CARBON	6.8K 5% 1/4W
R306	1-247-843-11	CARBON	3.3K 5% 1/4W
R307	1-249-441-11	CARBON	100K 5% 1/4W
R308	1-249-429-11	CARBON	10K 5% 1/4W
R309	1-249-441-11	CARBON	100K 5% 1/4W
R310	1-249-417-11	CARBON	1K 5% 1/4W
R311	1-249-432-11	CARBON	18K 5% 1/4W
R312	1-249-436-11	CARBON	39K 5% 1/4W
R362	1-215-454-00	METAL	24K 1% 1/4W
R363	1-249-441-11	CARBON	100K 5% 1/4W
R364	1-249-417-11	CARBON	1K 5% 1/4W
R701	1-249-417-11	CARBON	1K 5% 1/4W
R702	1-249-429-11	CARBON	10K 5% 1/4W
△R703	1-217-642-11	FUSIBLE	6.8 5% 1/4W F
R707	1-249-417-11	CARBON	1K 5% 1/4W
R712	1-249-417-11	CARBON	1K 5% 1/4W
△R753	1-217-642-11	FUSIBLE	6.8 5% 1/4W F
R803	1-249-425-11	CARBON	4.7K 5% 1/4W
R804	1-249-425-11	CARBON	4.7K 5% 1/4W
R805	1-249-425-11	CARBON	4.7K 5% 1/4W
R806	1-249-425-11	CARBON	4.7K 5% 1/4W
R807	1-249-425-11	CARBON	4.7K 5% 1/4W
R808	1-249-425-11	CARBON	4.7K 5% 1/4W
R810	1-249-429-11	CARBON	10K 5% 1/4W
R811	1-249-421-11	CARBON	2.2K 5% 1/4W
R812	1-249-441-11	CARBON	100K 5% 1/4W
R815	1-249-393-11	CARBON	10 5% 1/4W
R816	1-249-429-11	CARBON	10K 5% 1/4W
R817	1-249-429-11	CARBON	10K 5% 1/4W
R818	1-249-429-11	CARBON	10K 5% 1/4W
R819	1-249-417-11	CARBON	1K 5% 1/4W
R820	1-249-441-11	CARBON	100K 5% 1/4W
R821	1-247-807-31	CARBON	100 5% 1/4W
R822	1-247-807-31	CARBON	100 5% 1/4W
R823	1-249-429-11	CARBON	10K 5% 1/4W
R825	1-249-429-11	CARBON	10K 5% 1/4W
R826	1-249-429-11	CARBON	10K 5% 1/4W
R827	1-249-419-11	CARBON	1.5K 5% 1/4W

Ref. No.	Part No.	Description	Remark
R828	1-249-417-11	CARBON	1K 5% 1/4W
R830	1-249-429-11	CARBON	10K 5% 1/4W
R831	1-249-415-11	CARBON	680 5% 1/4W
R832	1-249-437-11	CARBON	47K 5% 1/4W
R833	1-249-415-11	CARBON	680 5% 1/4W
R834	1-249-437-11	CARBON	47K 5% 1/4W
R835	1-249-417-11	CARBON	1K 5% 1/4W
R836	1-249-440-11	CARBON	82K 5% 1/4W
R837	1-249-420-11	CARBON	1.8K 5% 1/4W
R838	1-249-429-11	CARBON	10K 5% 1/4W
R839	1-249-429-11	CARBON	10K 5% 1/4W
		< VARIABLE RESISTOR >	
RV153	1-238-599-11	RES, ADJ, CARBON 4.7K	
RV253	1-238-599-11	RES, ADJ, CARBON 4.7K	
RV801	1-241-762-11	RES, ADJ, CARBON 2.2K	
		< SWITCH >	
△S902	1-572-675-11	SWITCH, POWER VOLTAGE CHANGE (VOLTAGE SELECTOR)(JE, HK, EA, SP, MY)	
		< VIBRATOR >	
X801	1-577-358-21	VIBRATOR, CERAMIC (4MHz)	

*	1-653-898-11	MECH BOARD	

		< CONNECTOR >	
CN910	1-766-700-11	SOCKET, CONNECTOR 15P	
		< PHOTO REFLECTOR >	
PH901	8-719-710-02	PHOTO REFLECTOR NJL5165K-A	
		< RESISTOR >	
R901	1-249-419-11	CARBON	1.5K 5% 1/4W
		< SWITCH >	
S902	1-762-114-11	SWITCH, LEAF (FWD REC (ERASE PROOF) DET)	
S903	1-572-335-11	SWITCH, LEAF (CrO2 DET)	
S904	1-762-114-11	SWITCH, LEAF (REV REC (ERASE PROOF) DET)	
S905	1-572-335-11	SWITCH, LEAF (CASSETTE PACK (HALF) DET)	
S906	1-572-335-11	SWITCH, LEAF (METAL DET)	
S907	1-762-113-11	SWITCH, LEAF (PLAY/STOP DET)	

The components identified by mark △ or dotted line with mark △ are critical for safety.
 Replace only with part number specified.

PANEL **TRANS**

Ref. No.	Part No.	Description	Remark
*	A-2007-630-A	PANEL BOARD, COMPLETE (AEP, G, UK)	
*	A-2007-619-A	PANEL BOARD, COMPLETE (JE, HK, EA, SP, MY)	

< DIODE >			
D851	8-719-057-10	DIODE LNJ301MPUJA (<◁)	
D852	8-719-057-10	DIODE LNJ301MPUJA (>▷)	
D853	8-719-058-17	DIODE LNJ401NPYJA (▣)	
D854	8-719-057-09	DIODE LNJ801LPDJA (● REC)	
D855	8-719-057-09	DIODE LNJ801LPDJA (CD SYNC)	
D856	8-719-057-09	DIODE LNJ801LPDJA (TAPE)	
D857	8-719-056-11	DIODE SML72423C-TP4 (ON/STANDBY)	
< TRANSISTOR >			
Q861	8-729-661-97	TRANSISTOR RT1P441SK-TP	
< RESISTOR >			
R851	1-249-413-11	CARBON 470 5% 1/4W	
R852	1-249-417-11	CARBON 1K 5% 1/4W	
R853	1-249-421-11	CARBON 2.2K 5% 1/4W	
R854	1-249-425-11	CARBON 4.7K 5% 1/4W	
R855	1-249-429-11	CARBON 10K 5% 1/4W	
R856	1-249-413-11	CARBON 470 5% 1/4W	
R857	1-249-417-11	CARBON 1K 5% 1/4W	
R858	1-249-421-11	CARBON 2.2K 5% 1/4W	
R859	1-249-425-11	CARBON 4.7K 5% 1/4W	
R862	1-249-409-11	CARBON 220 5% 1/4W	
R863	1-249-409-11	CARBON 220 5% 1/4W	
R864	1-249-409-11	CARBON 220 5% 1/4W	
R865	1-249-411-11	CARBON 330 5% 1/4W	
R866	1-249-411-11	CARBON 330 5% 1/4W	
R867	1-249-411-11	CARBON 330 5% 1/4W	
R868	1-249-409-11	CARBON 220 5% 1/4W	
R869	1-249-409-11	CARBON 220 5% 1/4W	
< SWITCH >			
S851	1-554-303-21	SWITCH, TACTILE (⊕)	
S852	1-554-303-21	SWITCH, TACTILE (□)	
S853	1-554-303-21	SWITCH, TACTILE (▣)	
S854	1-554-303-21	SWITCH, TACTILE (>▷)	
S855	1-554-303-21	SWITCH, TACTILE (<◁)	
S856	1-554-303-21	SWITCH, TACTILE (CD SYNC)	
S857	1-554-303-21	SWITCH, TACTILE (POWER)	
S858	1-554-303-21	SWITCH, TACTILE (<◁◁)	
S859	1-554-303-21	SWITCH, TACTILE (▷▷)	
S860	1-554-303-21	SWITCH, TACTILE (●REC)	
S861	1-570-974-11	SWITCH, SLIDE (DIRECTION)	
S862	1-570-974-11	SWITCH, SLIDE (DOLBY NR)	

Ref. No.	Part No.	Description	Remark
*	1-662-565-11	TRANS BOARD	

< CAPACITOR >			
C711	1-164-159-11	CERAMIC 0.1uF	50V
< CONNECTOR >			
CN701	1-568-828-11	PIN, CONNECTOR (PC BOARD) 9P	
CN901	1-564-321-00	PIN, CONNECTOR 2P	

MISCELLANEOUS			

5	1-769-974-11	WIRE (FLAT TYPE) (13 CORE)	
△56	1-574-805-11	CORD, POWER (AEP, G, EA, MY, SP, HK)	
△56	1-575-653-11	CORD, POWER (JE)	
△56	1-696-570-21	CORD, POWER (UK)	
61	1-769-905-11	WIRE (FLAT TYPE) (9 CORE)	
△62	1-569-007-11	ADAPTOR, CONVERSION 2P (JE)	
△63	1-569-008-11	ADAPTOR, CONVERSION 2P (EA, MY, SP)	
△64	1-770-019-11	ADAPTOR, CONVERSION PLUG 3P (HK)	
HRPE9011	1-500-156-11	HEAD (RECORD/PLAY/EARTH)	
M901	X-3369-091-1	MOTOR ASSY (LOADING)	
M902	X-3369-100-1	MOTOR (HK) ASSY (CAPSTAN/REEL)	
PM901	3-917-560-01	SOLENOID	
S901	1-571-300-21	SWITCH, ROTARY	
△T901	1-429-908-11	TRANSFORMER, POWER (EA, MY, SP, JE)	
△T901	1-429-909-11	TRANSFORMER, POWER (AEP, UK, G)	

HARDWARE LIST			

#1	7-685-646-79	SCREW +BVTP 3X8 TYPE2 N-S	
#2	7-685-871-09	SCREW +BVTT 3X6 (S)	
#3	7-621-775-10	SCREW +B 2.6X4	
#4	7-671-113-01	STEAL, BALL 3	
#5	7-685-534-19	SCREW +BTP 2.6X8 TYPE2 N-S	
#6	7-685-104-19	SCREW +P 2X6 TYPE2 NON-SLIT	
#7	7-682-544-04	SCREW +P 3X3	

The components identified by mark △ or dotted line with mark △ are critical for safety. Replace only with part number specified.

<u>Ref. No.</u>	<u>Part No.</u>	<u>Description</u>	<u>Remark</u>
-----------------	-----------------	--------------------	---------------

ACCESSORIES & PACKING MATERIALS

	1-558-271-11	CORD, CONNECTION (RCA PIN)	
	1-574-314-11	CORD (WITH CONNECTOR) (AU BUS)	
	3-858-049-11	MANUAL, INSTRUCTION (ENGLISH) (AEP, UK)	
	3-858-049-21	MANUAL, INSTRUCTION (FRENCH, SPANISH, PORTUGUESE) (AEP)	
	3-858-049-31	MANUAL, INSTRUCTION (GERMAN) (AEP, G)	
	3-858-049-41	MANUAL, INSTRUCTION (DUTCH, ITALIAN, SWEDISH) (AEP)	
	3-858-050-11	MANUAL, INSTRUCTION (ENGLISH) (EA, MY, SP, HK, JE)	
	3-858-050-21	MANUAL, INSTRUCTION (FRENCH, SPANISH) (EA, MY, SP)	
	3-858-050-31	MANUAL, INSTRUCTION (CHINESE) (EA, MY, SP, HK, JE)	
	3-858-050-41	MANUAL, INSTRUCTION (ARABIC) (EA)	
	3-858-050-51	MANUAL, INSTRUCTION (KOREAN, PORTU- GUESE) (JE)	
*	3-939-132-01	CUSHION (TX5) (FRONT)	
*	3-939-133-01	CUSHION (TX5) (REAR)	
*	3-939-135-01	INDIVIDUAL CARTON	

