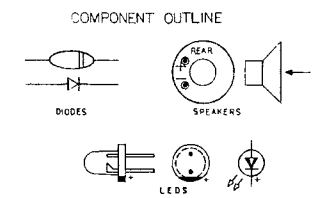
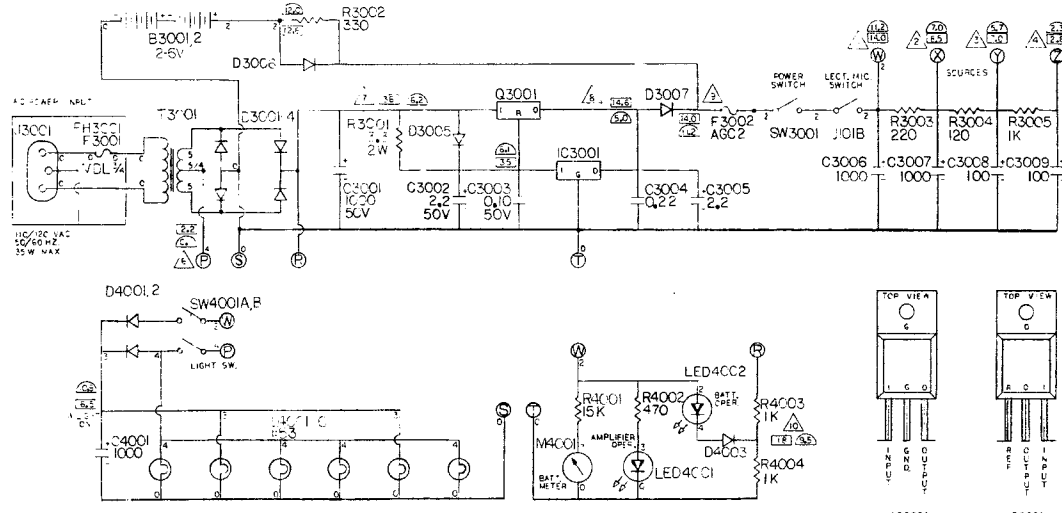
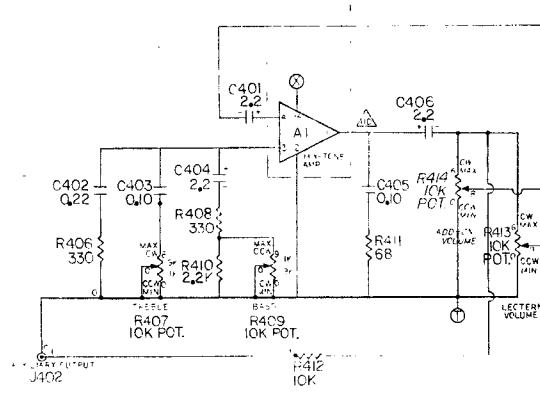
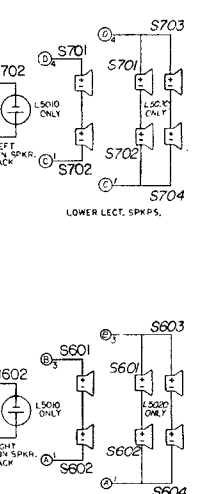
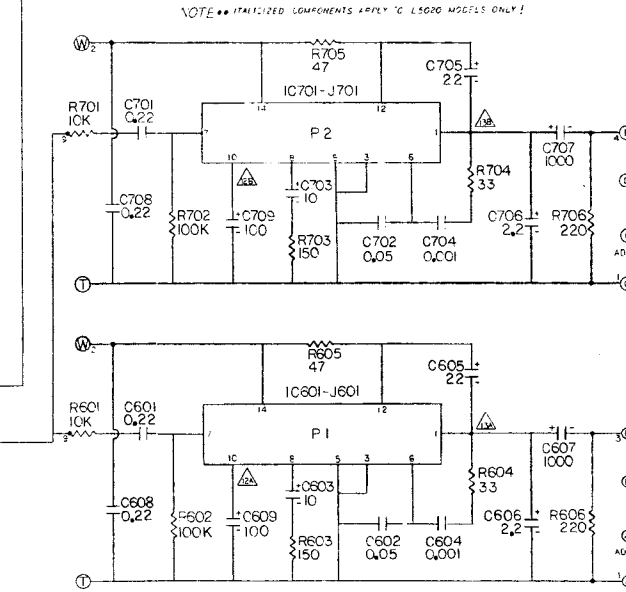
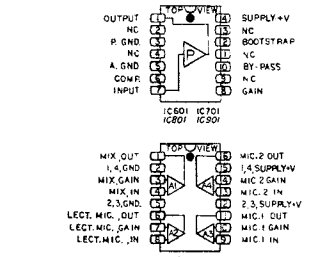
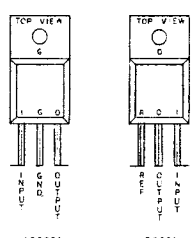


NOTE \*\* ITALIZED COMPONENTS APPLY TO L5020 MODELS ONLY!



NOTES:  
 ALL RESISTORS 1/2 WATT CARBON COMPOSITION, VALUE IN OHM UNLESS OTHERWISE NOTED.  
 ALL CAPACITORS 50VDC OR GREATER, VALUE IN uFD, UNLESS OTHERWISE NOTED.  
 VOLTAGE MEASUREMENT WITH 1K OHM OR 2000 OHM VOLT LEAD, AC POWER-HISS, FRESH BATTERIES,  
 CONTROLS AT MIDRANGE, PANEL LIGHTS OFF, NO SIGNAL.  
 VOLTAGE ON AC POWER OPERATION.  
 ALL TRIM ON BATTERY OPERATION.  
 SEE VOLTAGE CHART FOR PIN LISTING OF ALL IC'S  
 1000 HZ TEST SIGNAL, 0.004VRMS, APPLIED TO ANY SINE INPUT JACK, PREAMP SIGNALS  
 MEASURED ON SAME AMP. ONLY.



REV	DATE	DESCRIPTION
<b>SOUND-CRAFT SYSTEMS, INC.</b> Morrilton, Arkansas 72110		
<b>LECTERNETTE, Models L5010A and L5020A</b>		
DATE: November 1 1975 DWG		