

SUPERSCOPE®

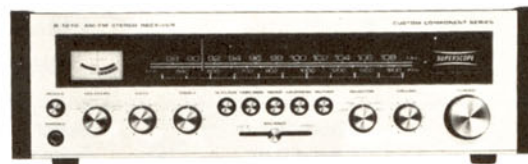
STEREO RECEIVER

Model R-1270

SERVICE DATA

— June 1976 —

SUPERSCOPE INC.

20525, NORDHOFF STREET,
CHATSWORTH, CALIFORNIA 91311-U.S.A.

TECHNICAL SPECIFICATIONS

FM SECTION

Tuning Frequency Range	88 ~ 108 MHz	Load Impedance	8 Ω
Usable Sensitivity	1.9 μ V	Input Sensitivity at 1,000 Hz	
Selectivity	56 dB	Phono	2.8 mV for 35 W output with 8 Ω load
Capture Ratio	2.3 dB	High Level	180 mV for 35 W output with 8 Ω load
Image Rejection Ratio at 106 MHz	48 dB		
Signal-to-Noise Ratio		Frequency Response	15 Hz ~ 70 kHz, -3 dB
Manaural Mode	78 dB	Intermodulation Distortion	Less than 1.0 % at rated power output with 8 Ω load
Stereo Mode	60 dB	Damping Factor	Greater than 44 with 8 Ω load
Total Harmonic Distortion		Dynamic Range (PHONO input to TAPE output)	100 dB
Monaural Mode	0.2 %	Equivalent Input Noise (from PHONO)	Less than 0.8 μ V for rated power output with 8 Ω load
Stereo Mode	0.4 %	High Level Hum and Noise	0.6 mV
Frequency Response (ref. 50 & 75 μ sec de-emphasis)		Channel Separation at 1,000 Hz	56 dB
.	30 Hz ~ 15 kHz, \pm 1.0 dB	Input Impedance at 1,000 Hz	
Stereo Separation at 1 kHz	46 dB	Phono	47 k Ω
Antenna Impedance	300 Ω balanced	High Level	100 k Ω
AM Suppression	54 dB		

AM SECTION

Tuning Frequency Range	525 ~ 1,605 kHz
Usable Sensitivity	10 μ V
Selectivity	36 dB
Image Rejection Ratio at 1,400 kHz	42 dB
Signal-to-Noise Ratio	52 dB
Frequency Response	15 Hz ~ 2.7 kHz, -3 dB
Total Harmonic Distortion	3.0 %

AUDIO SECTION

Rated Power Output (continuous average per channel with all channels driven, or in 2-channel mode)	35 W
Power Band	40 Hz ~ 20 kHz
Total Harmonic Distortion	1 %

GENERAL

Power Requirements	
U.S. and Canadian Version	120V, AC 50/60 Hz
European Version	110, 120, 220 or 240V AC, 50 Hz
Nominal Power Consumption at	
Idling	26 W
Rated Power Output	160 W
Maximum Operation	220 W
Cabinet Dimensions	
Height	4-13/16" (122mm)
Width	16-15/16" (430mm)
Depth	11-5/16" (287mm)
Net Weight	20.2 lbs (9.6 kg)

* These specifications and exterior designs may be changed for improvement without notice.

ALIGNMENT PROCEDURE

1. Set the output VOLUME control at maximum position.
2. A dummy resistor of 47K ohms must be connected across the tape output terminals before alignment.

FM ALIGNMENT PROCEDURES

(Selector switch in the "FM" position)

Step	Signal Source Connection	Signal Frequency	Indicator Connection	Set Dial Pointer to:	Adjust:
FM IF ALIGNMENT					
1	Sweep generator to point ① through 5pF capacitor	10.7 MHz marker at 10.6, 10.7 and 10.8 MHz	Oscilloscope to point ⑤ through diode (1S24735)	Quiet point on band.	L105 for maximum and symmetric response.
2			Oscilloscope to point ⑥ (J116)		L106 for straight and symmetric "S" curve response.
3	Repeat steps 1 and 2.				
FM RF ALIGNMENT					
1	RF generator to FM antenna terminals ③ through matching network (300 ohms, balanced) (Maintain RF level below limit.)	87 MHz	VTVM to L or R channel output terminals (J003)	87 MHz with tuning gang closed.	L103 for maximum output.
2		109 MHz		109 MHz with tuning gang open.	CF-3 for maximum output.
3		90 MHz		90 MHz.	L101, L102 for maximum output.
4		106 MHz		106 MHz.	CF-1, CF-2 for maximum output.
5	Repeat steps 1 to 4.				
6	Check overall response curve and repeat above steps as necessary to obtain maximum sensitivity.				
7	No connection	No signal	DC VTVM 1-volt range to ⑥ (J116)	—	L106 secondary core (upper) for "0" voltage reading.
8	RF generator 1mV output to FM antenna terminals ③ through matching network (300 ohms, balanced)	98 MHz	Distortion meter to ⑥ (J116)	98 MHz.	L106 primary core (bottom) for minimum distortion.
9		98 MHz	DC VTVM to ① (J113) with it set to 3V range.	98 MHz.	L107 for maximum output.
MUTING CIRCUIT ALIGNMENT					
1	RF generator 25 μ V output to FM antenna terminals ③ through matching network (300 ohms, balanced)	98 MHz	VTVM to R or L channel output terminals (J003)	98 MHz.	R161 for 25 μ V threshold level. (During this adjustment turn the muting pushswitch "ON".)

MULTIPLEX ALIGNMENT PROCEDURES

(Selector switch in the "FM" position, Tape Monitor pushswitch "ON")

Step	Signal Source Connection	Signal Frequency	Indicator Connection	Set Dial Pointer to:	Adjust:
1	RF generator to FM antenna terminals ③ through matching network (300 ohms, balanced), with 1mV FM stereo simulator RF level and 100% modulation (pilot 9%)	Pilot (19 kHz)	Frequency counter to point ⑥ (J120)	98 MHz.	R302 so that Frequency counter may precisely read 19 kHz.
2		Stereo, left (1,000 Hz)	VTVM to right channel output terminal ① (J125)		R301 for maximum output and same separation in both channels.
3		Stereo, right (1,000 Hz)	VTVM to left channel output terminal ④ (J123)		
4	Repeat steps 2 and 3.				

AM ALIGNMENT PROCEDURES

(Selector Switch in the "AM" position)

Step	Signal Source Connection	Signal Frequency	Indicator Connection	Set Dial Pointer to:	Adjust:
AM IF ALIGNMENT					
1	Sweep generator to point ① (J105)	455 kHz marker	Oscilloscope to point ② (J112)	Quiet point on band.	L203, L204 for maximum and symmetric response.
2	Repeat step 1.				
AM RF ALIGNMENT					
1	RF generator to AM antenna terminals through IHF dummy	515 kHz	VTVM to L or R channel output terminals (J003)	515 kHz with tuning gang closed.	L202 for maximum output.
2		1,650 kHz		1,650 kHz with tuning gang open.	CA-2 for maximum output.
3		600 kHz		600 kHz.	L001 for maximum output.
4		1,400 kHz		1,400 kHz.	CA-1 for maximum output.
5	Repeat steps 1 to 4 as necessary to obtain maximum sensitivity.				
6	RF generator to AM antenna terminals through IHF dummy, 60 dB	1,000 kHz	—	1,000 kHz.	R204 so that signal strength meter M001 may read 80%.

AUDIO ALIGNMENT PROCEDURES

(Selector switch in the "AUX" position)

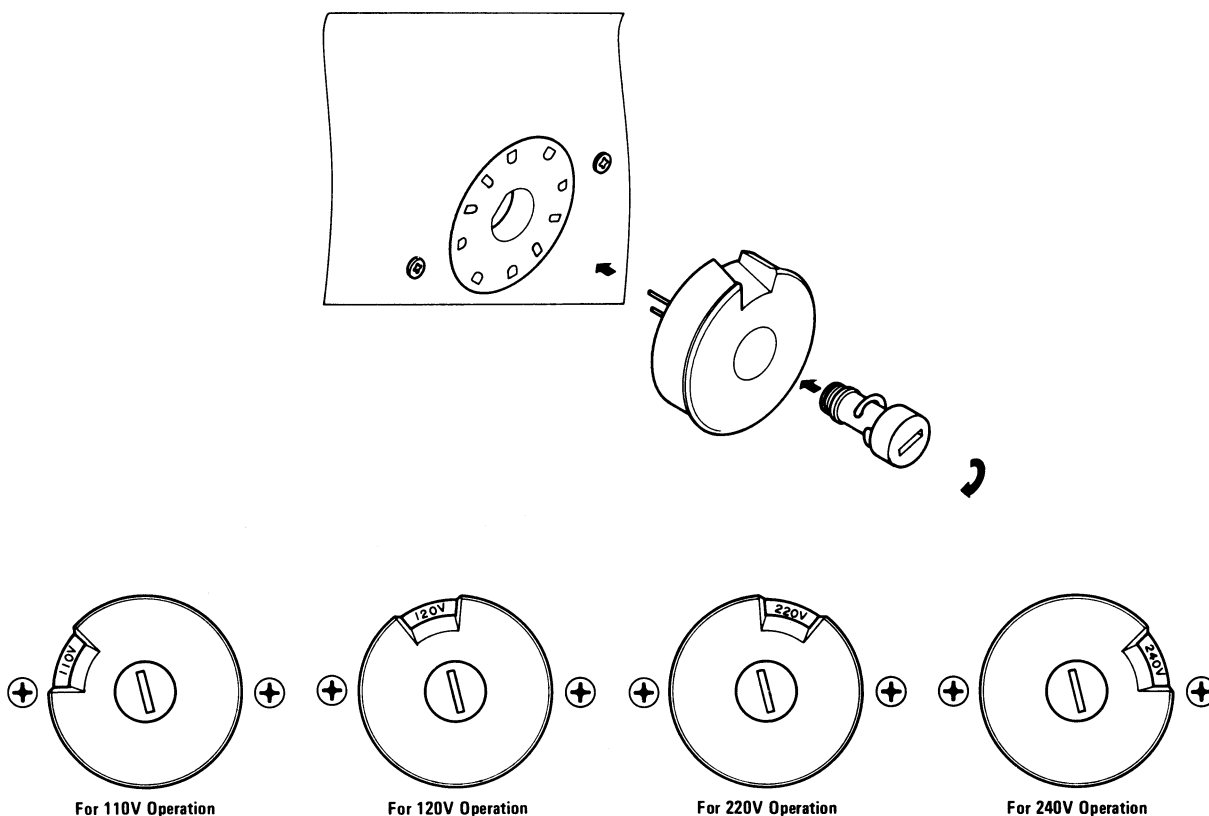
Step	Signal Source Connection	Signal Frequency	Indicator Connection	Adjust:
1	—	—	DC VTVM 0.5 or 1V range to output terminals with it set to 0.5 or 1V range	R711, R712 for "zero" DC output.
2	AF oscillator to AUX terminal	1,000 Hz	Oscilloscope to output terminals (J006)	R733, R734 for no evidence of crossover distortion at 500mW output. CAUTION: Avoid excessive bias current (20mA ~ 30mA at no signal).
3	Repeat steps 1 and 2.			

VOLTAGE CONVERSION (For European Model)

The European version of the R1270 is equipped with a universal power transformer that may be adjusted to operate at 110V, 120V, 220V or 240V AC at 50 to 60 Hz.

To convert the unit to a different power source voltage, reposition conversion plug as shown in the illustration below.

CAUTION: DISCONNECT POWER SUPPLY CORD FROM AC OUTLET BEFORE CONVERTING VOLTAGE



Instruction for the use in the range other than specified in FTZ codes

**Achtung für die Leute, die in dem Gebiet wohnen,
wo die FTZ-Bestimmungen vorherrschend sind.**

Sollte das Gerät auch für Frequenzen ausserhalb des in den FTZ-Bestimmungen angegebenen Bereiches empfangsbereit sein, bitten wir, den Bereich durch Nachstellen des Kernes in der Oszillatorschleife (in der Abbildung mit "FTZ" gekennzeichnet) so zu korrigieren, dass er den Bestimmungen entspricht.

APPENDIX**SERVICE INFORMATION FOR SCANDINAVIAN (N) VERSION (EXCLUDING SWEDEN)**

Information contained here deals with the rear panel, schematic diagram and parts of the R-1270. For the circuit description, alignment method and repairing hints, refer to the original service data.

This *Superscope* product was specifically prepared to meet the requirements that exist in your locale. When reading the service data, please note the following differences:

1. Detachable AC Power Cord:

Insert the supplied power cord into the receptacle on the back of this equipment.

2. AC Convenience Outlets:

AC convenience outlets do not exist on this equipment.

3. AC Voltage Selector:

The R-1270 can be set to operate on line voltages of 110V, 120V, 220V or 240V~.

For your convenience, your local Superscope dealer set this selector to the proper operating voltage for your area.

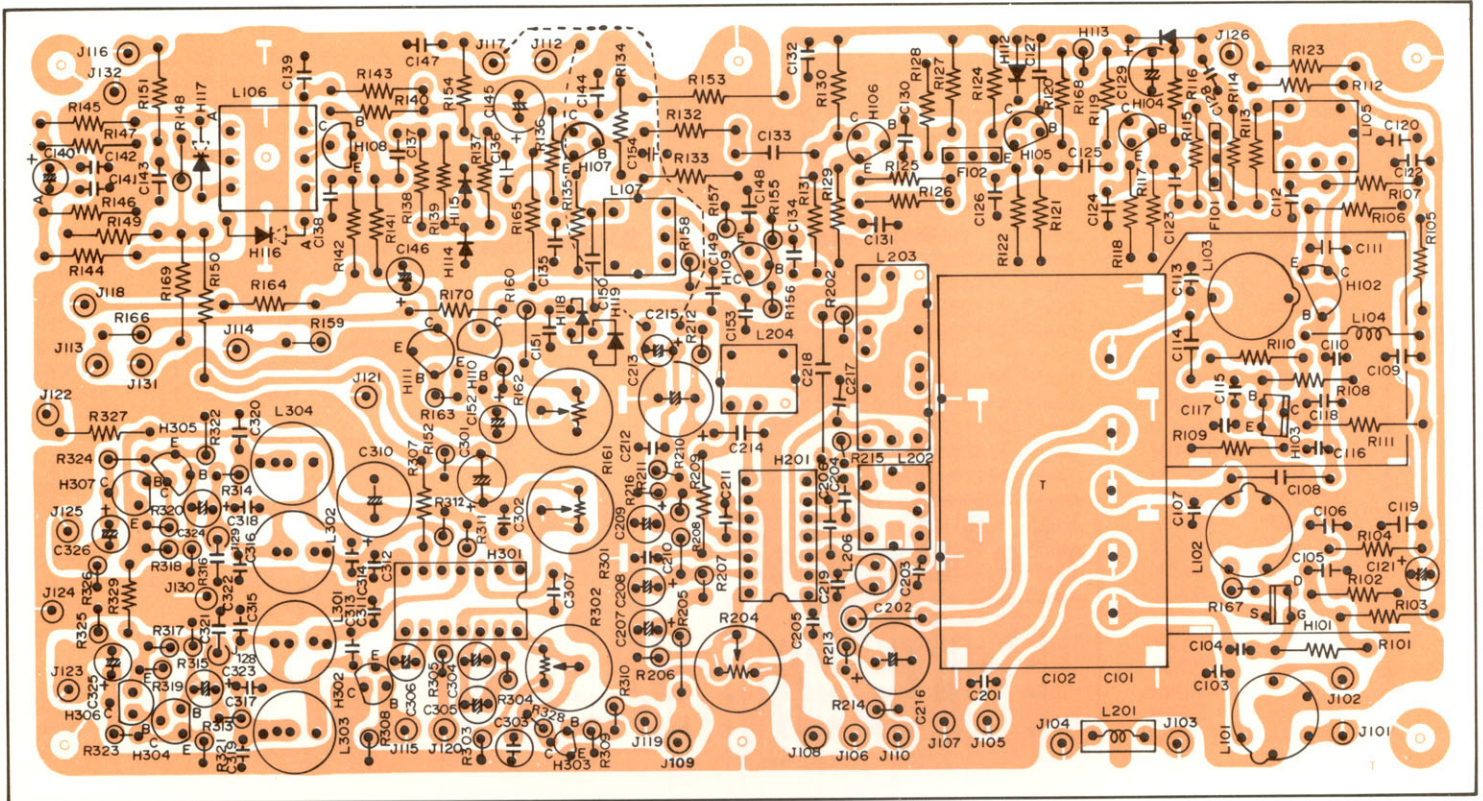
4. AC Protector Fuse:

The R-1270 incorporates an AC protector fuse that automatically disconnects AC power in event of a power surge or circuit failure. The fuse of correct rating has been inserted by your local Superscope dealer as specified on the rear panel. Note that the fuse must be changed if a different operating voltage is selected.

5. Grounding Post [≡]:

For safety operation, connect this post securely to a grounding wire.

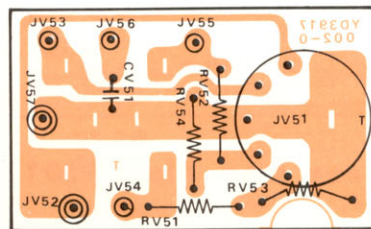
CIRCUIT BOARD DIAGRAMS (TOP VIEW)



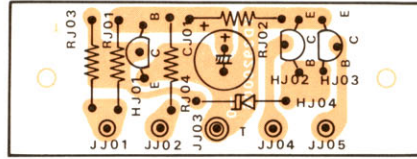
FM/AM Tuner Block P100



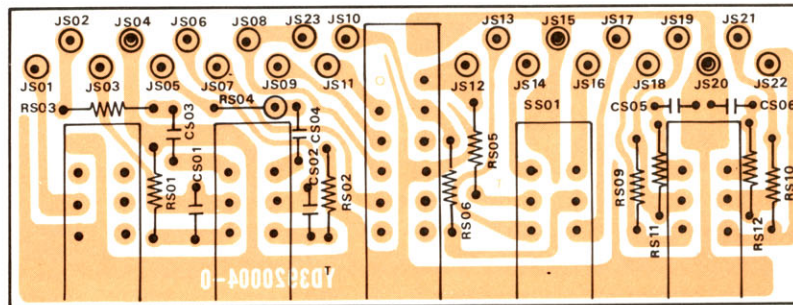
Dial Lamp Block PZ01



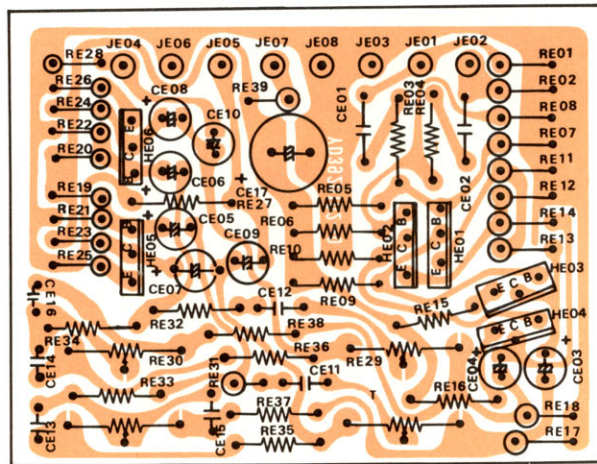
Tape In/Out Block PV51
(For Europe and Australia)



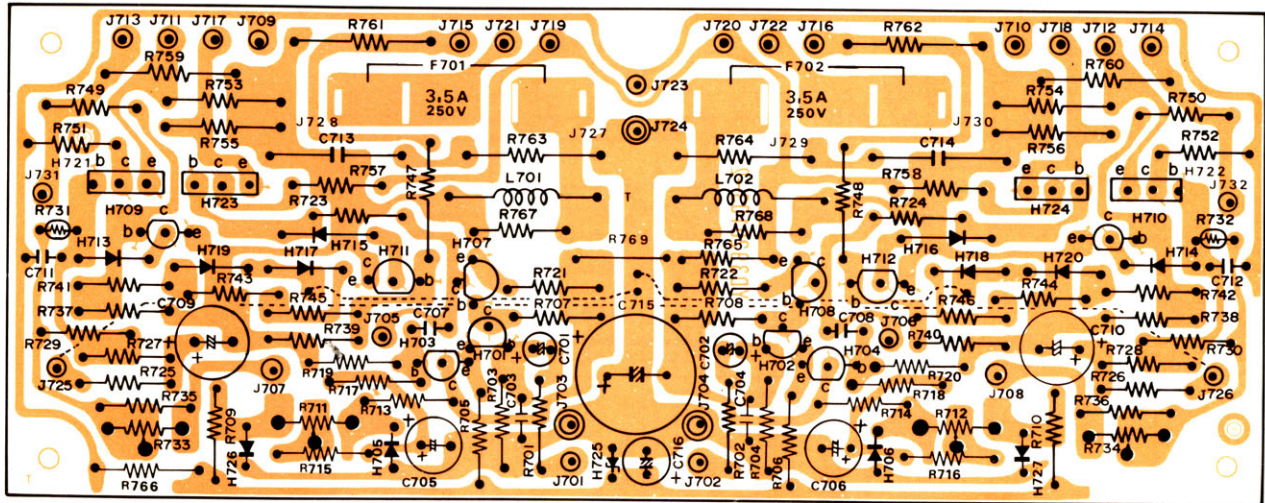
Pops Noise Muting Block PJ01



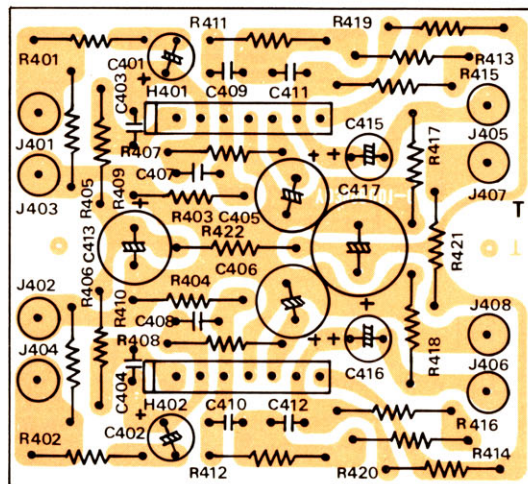
Switch Block PS01
(Tape Mon, Loudness, Mono, High Filter and Muting)



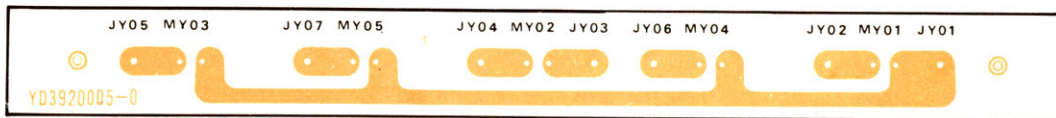
Tone Amp. Block PE01



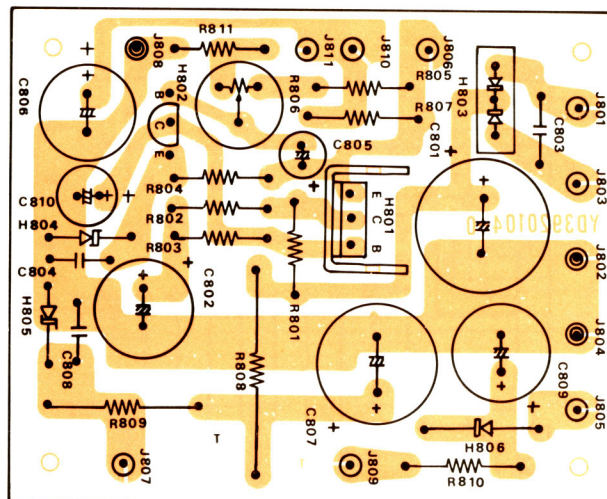
Main Amp. Block P700



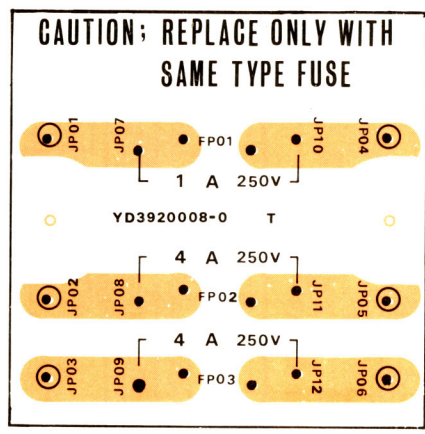
EQ. Amp. Block P400



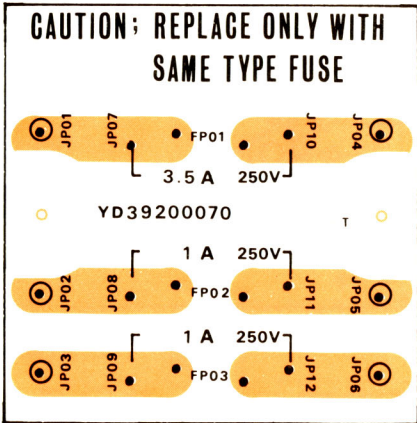
Indicator Lamp Block PY01



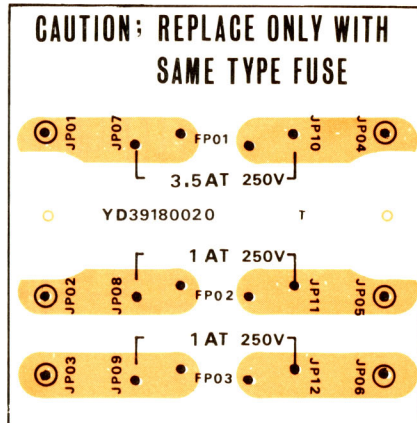
Power Source Block P800



**Fuse Block PP01
(For Canada)**

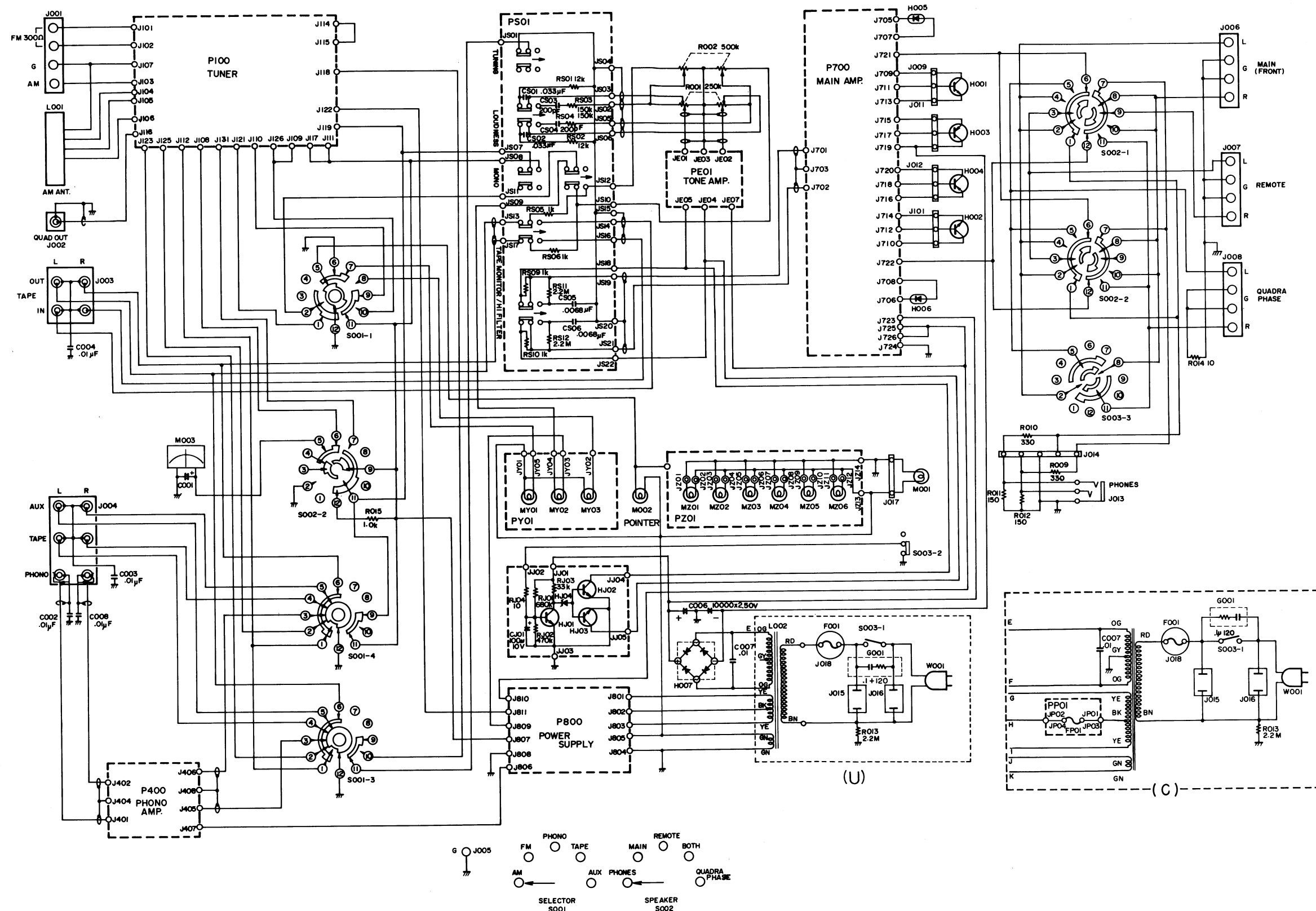


**Fuse Block PP01
(For Europe and Australia)**

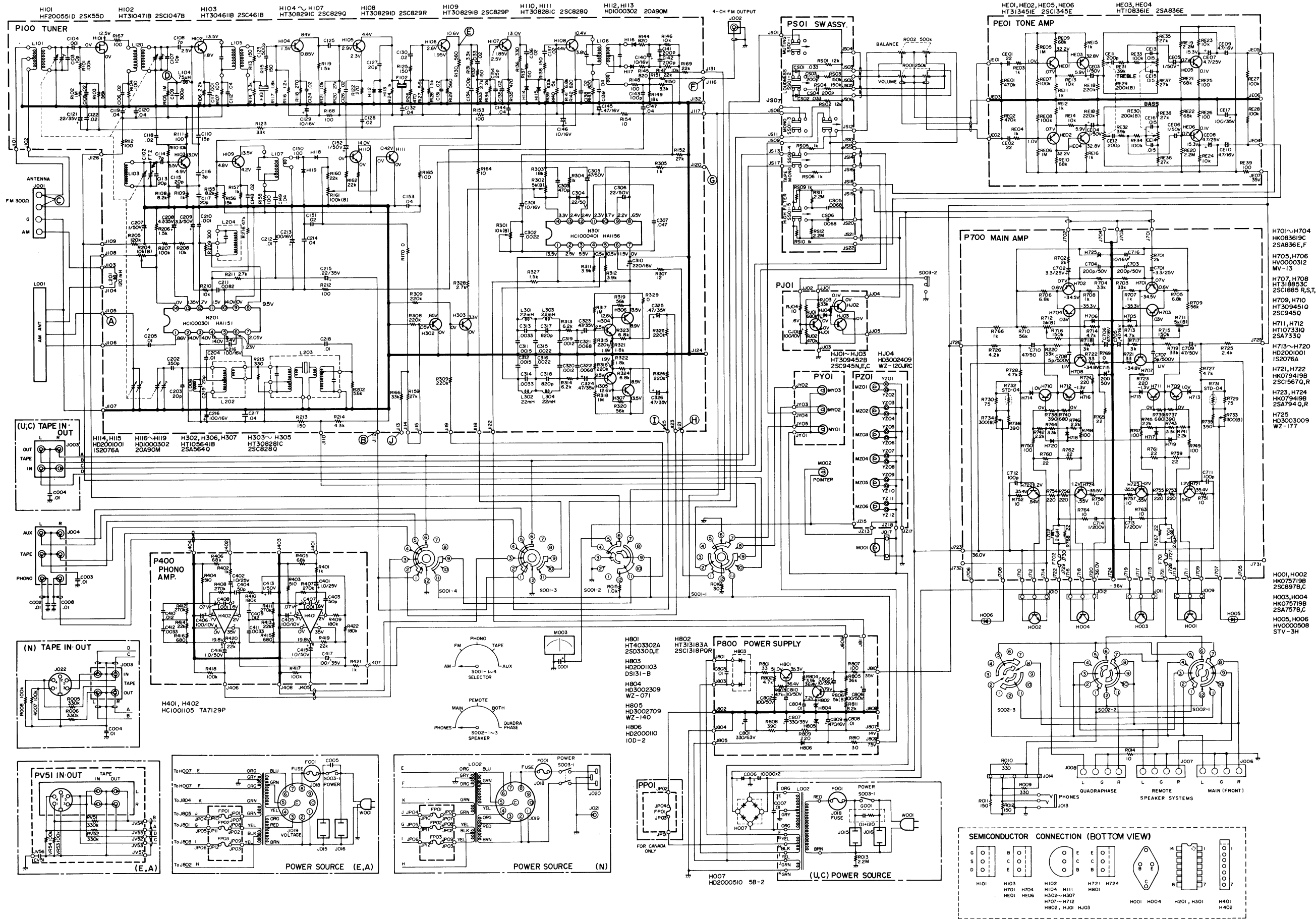


**Fuse Block PP01
(For Scandinavia)**

INTERCONNECTION DIAGRAM



SCHEMATIC DIAGRAM



PARTS LIST

U: U.S.A.
C: Canada
E: Europe
N: Scandinavia

REF. DESIG.	Q'TY			PART NO.	DESCRIPTION
	U	C	E N		
A	1	1	1	392006340	Front Panel Assembly, Gold
0103	1	1	1	392006301	Escutcheon
0105	1	1	1	392015801	Window
0108	1	1	1	391725101	Badge
0110	6	6	6	391725901	Bushing
0112	1	1	1	391725902	Bushing
0114	1	1	1	285425901	Bushing
A1	1	1	1	392006341	Front Panel Assembly, Black
0104	1	1	1	392006302	Escutcheon
0105	1	1	1	392015801	Window
0108	1	1	1	391725101	Badge
0110	6	6	6	391725901	Bushing
0112	1	1	1	391725902	Bushing
0114	1	1	1	285425901	Bushing
B	1	1		392016040	Rear Panel Assembly
B1			1	392016041	Rear Panel Assembly
0601	1	1		392016020	Bracket
0602			1	392016021	Bracket
0605			1	282125901	Bushing
0619	4	4		55060365S	T. R. Rivet
0620			2	55060305S	T. R. Rivet
J015	1	1		YJ0400018	Jack, AC Outlet
J016	1	1		YJ0400018	Jack, AC Outlet
C	1	1	1	391715940	Drum Assembly
0901	1	1	1	391715901	Drum
0902	1	1	1	71101689L	Spring
0903	2	2	2	51064019A	Set Screw
D	1	1	1	287310341	Pointer Assembly
0922	1	1	1	281810301	Pointer
0923	1	1	1	287310301	Pointer
0924	1	1	1	281805301	Cover
0925	1	1	1	390911801	Spacer
M002	1	1	1	IN1008030	Lamp
E	1	1	1	120200640	Hook Assembly
0930	1	1	1	120225801	Hook
0931	1	1	1	72080802A	String
TUNER CIRCUIT BOARD-P100					
P100	1	1	1	YD3920101	P. W. Board, Tuner (Print only)
	1	1		ZZ3920101	P. W. Board Assembly
			1	ZZ3920801	P. W. Board Assembly
P100-SPACERS					
P108	2	2	2	344411805	Spacer, R154
P109	2	2	2	293311802	Spacer, R327
P100-RESISTORS					
R101	1	1	1	RT0510414	Fixed, 100K Ω $\pm 5\%$, $\frac{1}{4}W$
R102	1	1	1	RT0510514	Fixed, 1M Ω $\pm 5\%$, $\frac{1}{4}W$
R103	1	1	1	RT0556314	Fixed, 56K Ω $\pm 5\%$, $\frac{1}{4}W$
R104	1	1	1	RT0510114	Fixed, 100 Ω $\pm 5\%$, $\frac{1}{4}W$
R105	1	1	1	RT0510514	Fixed, 1M Ω $\pm 5\%$, $\frac{1}{4}W$
R106	1	1	1	RT0522214	Fixed, 2.2K Ω $\pm 5\%$, $\frac{1}{4}W$
R107	1	1	1	RT0510114	Fixed, 100 Ω $\pm 5\%$, $\frac{1}{4}W$
R108	1	1	1	RT0582214	Fixed, 8.2K Ω $\pm 5\%$, $\frac{1}{4}W$
R109	1	1	1	RT0510214	Fixed, 1K Ω $\pm 5\%$, $\frac{1}{4}W$
R110	1	1	1	RT0510314	Fixed, 10K Ω $\pm 5\%$, $\frac{1}{4}W$
R111	1	1	1	RT0510114	Fixed, 100 Ω $\pm 5\%$, $\frac{1}{4}W$
R112	1	1	1	RT0510114	Fixed, 100 Ω $\pm 5\%$, $\frac{1}{4}W$
R113	1	1	1	RT0515114	Fixed, 150 Ω $\pm 5\%$, $\frac{1}{4}W$
R114	1	1	1	RT0533214	Fixed, 3.3K Ω $\pm 5\%$, $\frac{1}{4}W$
R115	1	1	1	RT0515114	Fixed, 150 Ω $\pm 5\%$, $\frac{1}{4}W$
R116	1	1	1	RT0512314	Fixed, 12K Ω $\pm 5\%$, $\frac{1}{4}W$
R117	1	1	1	RT0518214	Fixed, 1.8K Ω $\pm 5\%$, $\frac{1}{4}W$
R118	1	1	1	RT0527114	Fixed, 270 Ω $\pm 5\%$, $\frac{1}{4}W$

REF. DESIG.	Q'TY			PARTS NO.	DESCRIPTION
	U	C	E N		
R119	1	1	1	RT0515214	Fixed, 1.5K Ω $\pm 5\%$, $\frac{1}{4}W$
R120	1	1	1	RT0527314	Fixed, 27K Ω $\pm 5\%$, $\frac{1}{4}W$
R121	1	1	1	RT0510314	Fixed, 10K Ω $\pm 5\%$, $\frac{1}{4}W$
R122	1	1	1	RT0527114	Fixed, 270 Ω $\pm 5\%$, $\frac{1}{4}W$
R123	1	1	1	RT0533314	Fixed, 33K Ω $\pm 5\%$, $\frac{1}{4}W$
R124	1	1	1	RT0510214	Fixed, 1K Ω $\pm 5\%$, $\frac{1}{4}W$
R125	1	1	1	RT0515114	Fixed, 150 Ω $\pm 5\%$, $\frac{1}{4}W$
R126	1	1	1	RT0547114	Fixed, 470 Ω $\pm 5\%$, $\frac{1}{4}W$
R127	1	1	1	RT0556214	Fixed, 5.6K Ω $\pm 5\%$, $\frac{1}{4}W$
R128	1	1	1	RT0515214	Fixed, 1.5K Ω $\pm 5\%$, $\frac{1}{4}W$
R129	1	1	1	RT0556114	Fixed, 560 Ω $\pm 5\%$, $\frac{1}{4}W$
R130	1	1	1	RT0556114	Fixed, 560 Ω $\pm 5\%$, $\frac{1}{4}W$
R131	1	1	1	RT0533214	Fixed, 3.3K Ω $\pm 5\%$, $\frac{1}{4}W$
R132	1	1	1	RT0515114	Fixed, 150 Ω $\pm 5\%$, $\frac{1}{4}W$
R133	1	1	1	RT0527214	Fixed, 2.7K Ω $\pm 5\%$, $\frac{1}{4}W$
R134	1	1	1	RT0512314	Fixed, 12K Ω $\pm 5\%$, $\frac{1}{4}W$
R135	1	1	1	RT0547114	Fixed, 470 Ω $\pm 5\%$, $\frac{1}{4}W$
R136	1	1	1	RT0533114	Fixed, 330 Ω $\pm 5\%$, $\frac{1}{4}W$
R137	1	1	1	RT0515114	Fixed, 150 Ω $\pm 5\%$, $\frac{1}{4}W$
R138	1	1	1	RT0515114	Fixed, 150 Ω $\pm 5\%$, $\frac{1}{4}W$
R139	1	1	1	RT0510414	Fixed, 100K Ω $\pm 5\%$, $\frac{1}{4}W$
R140	1	1	1	RT0515314	Fixed, 15K Ω $\pm 5\%$, $\frac{1}{4}W$
R141	1	1	1	RT0568214	Fixed, 6.8K Ω $\pm 5\%$, $\frac{1}{4}W$
R142	1	1	1	RT0568114	Fixed, 680 Ω $\pm 5\%$, $\frac{1}{4}W$
R143	1	1	1	RT0582114	Fixed, 820 Ω $\pm 5\%$, $\frac{1}{4}W$
R144	1	1	1	RT0582114	Fixed, 820 Ω $\pm 5\%$, $\frac{1}{4}W$
R145	1	1	1	RT0582114	Fixed, 820 Ω $\pm 5\%$, $\frac{1}{4}W$
R146	1	1	1	RT0510314	Fixed, 10K Ω $\pm 5\%$, $\frac{1}{4}W$
R147	1	1	1	RT0510314	Fixed, 10K Ω $\pm 5\%$, $\frac{1}{4}W$
R148	1	1	1	RT0510114	Fixed, 100 Ω $\pm 5\%$, $\frac{1}{4}W$
R149	1	1	1	RT0518314	Fixed, 18K Ω $\pm 5\%$, $\frac{1}{4}W$
R150	1	1	1	RT0533214	Fixed, 3.3K Ω $\pm 5\%$, $\frac{1}{4}W$
R151	1	1	1	RT0522314	Fixed, 22K Ω $\pm 5\%$, $\frac{1}{4}W$
R152	1	1	1	RT0527314	Fixed, 27K Ω $\pm 5\%$, $\frac{1}{4}W$
R153	1	1	1	RT0510114	Fixed, 100 Ω $\pm 5\%$, $\frac{1}{4}W$
R154	1	1	1	RT0510014	Fixed, 10 Ω $\pm 5\%$, $\frac{1}{4}W$
R155	1	1	1	RT0582214	Fixed, 8.2K Ω $\pm 5\%$, $\frac{1}{4}W$
R156	1	1	1	RT0515314	Fixed, 15K Ω $\pm 5\%$, $\frac{1}{4}W$
R157	1	1	1	RT0510214	Fixed, 1K Ω $\pm 5\%$, $\frac{1}{4}W$
R158	1	1	1	RT0510114	Fixed, 100 Ω $\pm 5\%$, $\frac{1}{4}W$
R159	1	1	1	RT0527314	Fixed, 27K Ω $\pm 5\%$, $\frac{1}{4}W$
R160	1	1	1	RT0522314	Fixed, 22K Ω $\pm 5\%$, $\frac{1}{4}W$
R161	1	1	1	RA0104018	Trimming, 100K Ω (B)
R162	1	1	1	RT0522314	Fixed, 22K Ω $\pm 5\%$, $\frac{1}{4}W$
R163	1	1	1	RT0533214	Fixed, 3.3K Ω $\pm 5\%$, $\frac{1}{4}W$
R164	1	1	1	RT0510114	Fixed, 100 Ω $\pm 5\%$, $\frac{1}{4}W$
R165	1	1	1	RT0510114	Fixed, 100 Ω $\pm 5\%$, $\frac{1}{4}W$
R166	1	1	1	RT0533314	Fixed, 33K Ω $\pm 5\%$, $\frac{1}{4}W$
R167	1	1	1	RT0510114	Fixed, 100 Ω $\pm 5\%$, $\frac{1}{4}W$
R168	1	1	1	RT0510114	Fixed, 100 Ω $\pm 5\%$, $\frac{1}{4}W$
R169	1	1	1	RT0522314	Fixed, 22K Ω $\pm 5\%$, $\frac{1}{4}W$
R170	1	1	1	RC0000012	Fixed, 0 Ω $\frac{1}{2}W$
R171	1	1	1	RT0530314	Fixed, 30K Ω $\pm 5\%$, $\frac{1}{4}W$
R202	1	1	1	RT0556214	Fixed, 5.6K Ω $\pm 5\%$, $\frac{1}{4}W$
R204	1	1	1	RA0103025	Trimming, 10K Ω (B)
R205	1	1	1	RT0512414	Fixed, 120K Ω $\pm 5\%$, $\frac{1}{4}W$
R206	1	1	1	RT0515214	Fixed, 1.5K Ω $\pm 5\%$, $\frac{1}{4}W$
R207	1	1	1	RT0510414	Fixed, 100K Ω $\pm 5\%$, $\frac{1}{4}W$
R208	1	1	1	RT0510314	Fixed, 10K Ω $\pm 5\%$, $\frac{1}{4}W$
R209	1	1	1	RT0530114	Fixed, 300 Ω $\pm 5\%$, $\frac{1}{4}W$
R210	1	1	1	RT0510314	Fixed, 10K Ω $\pm 5\%$, $\frac{1}{4}W$
R211	1	1	1	RT0527214	Fixed, 2.7K Ω $\pm 5\%$, $\frac{1}{4}W$
R212	1	1	1	RT0510114	Fixed, 100 Ω $\pm 5\%$, $\frac{1}{4}W$
R213	1	1	1	RT0515114	Fixed, 150 Ω $\pm 5\%$, $\frac{1}{4}W$
R214	1	1	1	RT0543214	Fixed, 4.3K Ω $\pm 5\%$, $\frac{1}{4}W$
R215	1	1	1	RT0533414	Fixed, 330K Ω $\pm 5\%$, $\frac{1}{4}W$

U: U.S.A.
C: Canada
E: Europe
N: Scandinavia

REF. DESIG.	Q'TY				PART NO.	DESCRIPTION
	U	C	E	N		
R216	1	1	1	1	RT0547314	Fixed, 47K Ω \pm 5%, $\frac{1}{4}$ W
R301	1	1	1	1	RA0103025	Trimming, 10K Ω (B)
R302	1	1	1	1	RA0502020	Trimming, 5K Ω (B)
R303	1	1	1	1	RT0518314	Fixed, 18K Ω \pm 5%, $\frac{1}{4}$ W
R304	1	1	1	1	RT0510214	Fixed, 1K Ω \pm 5%, $\frac{1}{4}$ W
R305	1	1	1	1	RT0510214	Fixed, 1K Ω \pm 5%, $\frac{1}{4}$ W
R307	1	1	1	1	RT0512014	Fixed, 12 Ω \pm 5%, $\frac{1}{4}$ W
R308	1	1	1	1	RT0522414	Fixed, 220K Ω \pm 5%, $\frac{1}{4}$ W
R309	1	1	1	1	RT0522414	Fixed, 220K Ω \pm 5%, $\frac{1}{4}$ W
R310	1	1	1	1	RT0522414	Fixed, 220K Ω \pm 5%, $\frac{1}{4}$ W
R311	1	1	1	1	RT0539214	Fixed, 3.9K Ω \pm 5%, $\frac{1}{4}$ W
R312	1	1	1	1	RT0539214	Fixed, 3.9K Ω \pm 5%, $\frac{1}{4}$ W
R313	1	1	1	1	RT0562214	Fixed, 6.2K Ω \pm 5%, $\frac{1}{4}$ W
R314	1	1	1	1	RT0562214	Fixed, 6.2K Ω \pm 5%, $\frac{1}{4}$ W
R315	1	1	1	1	RT0522414	Fixed, 220K Ω \pm 5%, $\frac{1}{4}$ W
R316	1	1	1	1	RT0522414	Fixed, 220K Ω \pm 5%, $\frac{1}{4}$ W
R317	1	1	1	1	RT0510514	Fixed, 1M Ω \pm 5%, $\frac{1}{4}$ W
R318	1	1	1	1	RT0510514	Fixed, 1M Ω \pm 5%, $\frac{1}{4}$ W
R319	1	1	1	1	RT0556314	Fixed, 56K Ω \pm 5%, $\frac{1}{4}$ W
R320	1	1	1	1	RT0556314	Fixed, 56K Ω \pm 5%, $\frac{1}{4}$ W
R321	1	1	1	1	RT0522214	Fixed, 2.2K Ω \pm 5%, $\frac{1}{4}$ W
R322	1	1	1	1	RT0522214	Fixed, 2.2K Ω \pm 5%, $\frac{1}{4}$ W
R323	1	1	1	1	RT0568214	Fixed, 6.8K Ω \pm 5%, $\frac{1}{4}$ W
R324	1	1	1	1	RT0568214	Fixed, 6.8K Ω \pm 5%, $\frac{1}{4}$ W
R325	1	1	1	1	RT0522414	Fixed, 220K Ω \pm 5%, $\frac{1}{4}$ W
R326	1	1	1	1	RT0522414	Fixed, 220K Ω \pm 5%, $\frac{1}{4}$ W
R327	1	1	1	1	GJ0515201	Fixed, 1.5K Ω \pm 5%, 1W
R328	1	1	1	1	RT0527214	Fixed, 2.7K Ω \pm 5%, $\frac{1}{4}$ W
R329	1	1	1	1	RC0000012	Fixed, 0 Ω $\frac{1}{2}$ W
R313	1	1	1	1	RT0556214	Fixed, 5.6K Ω \pm 5%, $\frac{1}{4}$ W
R314	1	1	1	1	RT0556214	Fixed, 5.6K Ω \pm 5%, $\frac{1}{4}$ W
P100-CAPACITORS						
C101	1	1	1	1	CA3250002	Variable, FM-3, AM-2
C103	1	1	1	1	DD1210001	Ceramic, 10PF, \pm 1PF
C104	1	1	1	1	DK1710201	Ceramic, 0.001 μ F, \pm 20%
C105	1	1	1	1	DK1820302	Ceramic, 0.02 μ F, +100%~-0%
C106	1	1	1	1	DK1820302	Ceramic, 0.02 μ F, +100%~-0%
C107	1	1	1	1	DD1210001	Ceramic, 10PF, \pm 1PF
C108	1	1	1	1	DD1207003	Ceramic, 7PF, \pm 1PF
C109	1	1	1	1	DD1530101	Ceramic, 300PF, \pm 5%
C110	1	1	1	1	DD1615003	Ceramic, 15PF, \pm 10%
C111	1	1	1	1	DK1710201	Ceramic, 0.001 μ F, \pm 20%
C112	1	1	1	1	DK1840302	Ceramic, 0.04 μ F, +100%~-0%
C113	1	1	1	1	DD1520002	Ceramic, 20PF, \pm 5%
C114	1	1	1	1	DD1207003	Ceramic, 7PF, \pm 1PF
C115	1	1	1	1	DD1520001	Ceramic, 20PF, \pm 5%
C116	1	1	1	1	DD1103001	Ceramic, 3PF, \pm 0.5PF
C117	1	1	1	1	DD1520001	Ceramic, 20PF, \pm 5%
C118	1	1	1	1	DK1820302	Ceramic, 0.02 μ F, +100%~-0%
C119	1	1	1	1	DK1840302	Ceramic, 0.04 μ F, +100%~-0%
C120	1	1	1	1	DK1840302	Ceramic, 0.04 μ F, +100%~-0%
C121	1	1	1	1	EV2240356	Electrolytic, 0.22 μ F, 35V
C122	1	1	1	1	DK1820302	Ceramic, 0.02 μ F, +100%~-0%
C123	1	1	1	1	DD1650101	Ceramic, 500PF, \pm 10%
C124	1	1	1	1	DK1820302	Ceramic, 0.02 μ F, +100%~-0%
C125	1	1	1	1	DK1820302	Ceramic, 0.02 μ F, +100%~-0%
C126	1	1	1	1	DK1820302	Ceramic, 0.02 μ F, +100%~-0%
C127	1	1	1	1	DD1620001	Ceramic, 20PF, \pm 10%
C128	1	1	1	1	DK1820302	Ceramic, 0.02 μ F, +100%~-0%
C129	1	1	1	1	EA1060169	Electrolytic, 10 μ F, 16V
C130	1	1	1	1	DK1820302	Ceramic, 0.02 μ F, +100%~-0%
C131	1	1	1	1	DK1820302	Ceramic, 0.02 μ F, +100%~-0%
C132	1	1	1	1	DK1840302	Ceramic, 0.04 μ F, +100%~-0%
C133	1	1	1	1	DK1820302	Ceramic, 0.02 μ F, +100%~-0%

REF. DESIG.	Q'TY				PART NO.	DESCRIPTION
	U	C	E	N		
C134	1	1	1	1	DD1610101	Ceramic, 100PF, \pm 10%
C135	1	1	1	1	DK1820302	Ceramic, 0.02 μ F, +100%~-0%
C136	1	1	1	1	DK1820302	Ceramic, 0.02 μ F, +100%~-0%
C137	1	1	1	1	DK1820302	Ceramic, 0.02 μ F, +100%~-0%
C138	1	1	1	1	DK1820302	Ceramic, 0.02 μ F, +100%~-0%
C139	1	1	1	1	DK1840302	Ceramic, 0.04 μ F, +100%~-0%
C140	1	1	1	1	EA1060169	Electrolytic, 10 μ F, 16V
C141	1	1	1	1	DD1620101	Ceramic, 200PF, \pm 10%
C142	1	1	1	1	DD1620101	Ceramic, 200PF, \pm 10%
C143	1	1	1	1	DD1610101	Ceramic, 100PF, \pm 10%
C144	1	1	1	1	DK1840302	Ceramic, 0.04 μ F, +100%~-0%
C145	1	1	1	1	EA4760169	Electrolytic, 47 μ F, 16V
C146	1	1	1	1	EA1060169	Electrolytic, 10 μ F, 16V
C147	1	1	1	1	DK1840302	Ceramic, 0.04 μ F, +100%~-0%
C148	1	1	1	1	DK1820302	Ceramic, 0.02 μ F, +100%~-0%
C149	1	1	1	1	DK1840302	Ceramic, 0.04 μ F, +100%~-0%
C150	1	1	1	1	DD1610101	Ceramic, 100PF, \pm 10%
C151	1	1	1	1	DK1820302	Ceramic, 0.02 μ F, +100%~-0%
C152	1	1	1	1	EA1050509	Electrolytic, 1 μ F, 50V
C153	1	1	1	1	DK1840302	Ceramic, 0.04 μ F, +100%~-0%
C154	1	1	1	1	DD1625001	Ceramic, 25PF, \pm 10%
C202	1	1	1	1	DF6535101	Film, 350PF, \pm 5%
C203	1	1	1	1	DD1520001	Ceramic, 20PF, \pm 5%
C204	1	1	1	1	DF1710301	Film, 0.01 μ F, \pm 20%
C205	1	1	1	1	DF1710301	Film, 0.01 μ F, \pm 20%
C206	1	1	1	1	DF1710301	Film, 0.01 μ F, \pm 20%
C207	1	1	1	1	EA1050509	Electrolytic, 1 μ F, 50V
C208	1	1	1	1	EA4750359	Electrolytic, 4.7 μ F, 35V
C209	1	1	1	1	EA3350509	Electrolytic, 3.3 μ F, 50V
C210	1	1	1	1	DK1710201	Ceramic, 0.001 μ F, \pm 20%
C211	1	1	1	1	DF1682201	Film, 0.0082 μ F, \pm 10%
C212	1	1	1	1	DF1710301	Film, 0.01 μ F, \pm 20%
C213	1	1	1	1	EA1070169	Electrolytic, 100 μ F, 16V
C214	1	1	1	1	DK1840302	Ceramic, 0.04 μ F, +100%~-0%
C215	1	1	1	1	EV2240356	Electrolytic, 0.22 μ F, 35V
C216	1	1	1	1	EA1070169	Electrolytic, 100 μ F, 16V
C217	1	1	1	1	DK1840302	Ceramic, 0.04 μ F, +100%~-0%
C218	1	1	1	1	DK1710301	Ceramic, 0.01 μ F, \pm 20%
C219	1	1	1	1	DD1525002	Ceramic, 25PF, \pm 5%
C301	1	1	1	1	EA1060169	Electrolytic, 10 μ F, 16V
C302	1	1	1	1	DF1622201	Film, 0.0022 μ F, \pm 10%
C303	1	1	1	1	DF5547101	Film, 470PF, \pm 5%
C304	1	1	1	1	EQ2240501	Electrolytic, 0.22 μ F, 50V
C305	1	1	1	1	EQ4740501	Electrolytic, 0.47 μ F, 50V
C306	1	1	1	1	EQ2240501	Electrolytic, 0.22 μ F, 50V
C307	1	1	1	1	DF1747301	Film, 0.047 μ F, \pm 20%
C310	1	1	1	1	EA2270169	Electrolytic, 220 μ F, 16V
C311	1	1	1	1	DF1615201	Film, 0.0015 μ F, \pm 10%
C312	1	1	1	1	DF1615201	Film, 0.0015 μ F, \pm 10%
C313	1	1	1	1	DF1533201	Film, 0.0033 μ F, \pm 5%
C314	1	1	1	1	DF1533201	Film, 0.0033 μ F, \pm 5%
C315	1	1	1	1	DF1622201	Film, 0.0022 μ F, \pm 10%
C316	1	1	1	1	DF1622201	Film, 0.0022 μ F, \pm 10%
C317	1	1	1	1	DF5582101	Film, 820PF, \pm 5%
C318	1	1	1	1	DF5582101	Film, 820PF, \pm 5%
C319	1	1	1	1	DF1612201	Film, 0.0012 μ F, \pm 10%
C320	1	1	1	1	DF1612201	Film, 0.0012 μ F, \pm 10%
C321	1	1	1	1	DF1568201	Film, 0.0068 μ F, \pm 5%
C321	1	1	1	1	DF1547201	Film, 0.0047 μ F, \pm 5%
C322	1	1	1	1	DF1568201	Film, 0.0068 μ F, \pm 5%
C322	1	1	1	1	DF1547201	Film, 0.0047 μ F, \pm 5%
C323	1	1	1	1	EV4740356	Electrolytic, 0.47 μ F, 35V
C324	1	1	1	1	EV4740356	Electrolytic, 0.47 μ F, 35V
C325	1	1	1	1	EV4740356	Electrolytic, 0.47 μ F, 35V
C326	1	1	1	1	EV4740356	Electrolytic, 0.47 μ F, 35V

U: U.S.A.
 C: Canada
 E: Europe
 N: Scandinavia

REF. DESIG	Q'TY				PART NO.	DESCRIPTION
	U	C	E	N		
P100-COILS & TRANSFORMERS						
L101	1	1	1	1	LA1202612	Antenna Coil, FM
L102	1	1	1	1	LA1202610	RF Coil, FM
L103	1	1	1	1	LO1203601	OSC Coil, FM
L104	1	1	1	1	LC1751001	Choke Coil, 0.75μH
L105	1	1	1	1	LI1001601	IFT, FM
L106	1	1	1	1	LI1401623	IFT, FM
L107	1	1	1	1	LI1015602	IFT, FM
L201	1	1	1	1	LC1124002	Choke Coil, 120μH
L202	1	1	1	1	LO1001049	OSC Coil, AM
L203	1	1	1	1	LI1028003	IFT, AM
L204	1	1	1	1	LI1001064	IFT, AM
L206	1	1	1	1	LC2105001	Choke Coil, 1mH
L301	1	1	1	1	LC2226004	Choke Coil, 22mH
L302	1	1	1	1	LC2226004	Choke Coil, 22mH
L303	1	1	1	1	LC2226004	Choke Coil, 22mH
L304	1	1	1	1	LC2226004	Choke Coil, 22mH
P100-FILTERS						
F101	1	1	1	1	FF1107005	Ceramic, CFS10.7 MHz
F102	1	1	1	1	FF1107005	Ceramic, CFS10.7 MHz
P100-SEMICONDUCTORS						
H101	1	1	1	1	HF200551D	FET, 2SK55 (D)
H102	1	1	1	1	HT310471B	Transistor, 2SC1047 (B)
H103	1	1	1	1	HT304611B	Transistor, 2SC461 (B)
H104	1	1	1	1	HT308291C	Transistor, 2SC829 (Q)
H105	1	1	1	1	HT308291C	Transistor, 2SC829 (Q)
H106	1	1	1	1	HT308291C	Transistor, 2SC829 (Q)
H107	1	1	1	1	HT308291C	Transistor, 2SC829 (Q)
H108	1	1	1	1	HT308291D	Transistor, 2SC829 (R)
H109	1	1	1	1	HT308291B	Transistor, 2SC829 (P)
H110	1	1	1	1	HT308281C	Transistor, 2SC828 (Q)
H111	1	1	1	1	HT308281C	Transistor, 2SC828 (Q)
H112	1	1	1	1	HD1000302	Diode, 20A90M
H113	1	1	1	1	HD1000302	Diode, 20A90M
H114	1	1	1	1	HD2001001	Diode, 1S2076A
H115	1	1	1	1	HD2001001	Diode, 1S2076A
H116	1	1	1	1	HD1000302	Diode, 20A90M
H117	1	1	1	1	HD1000302	Diode, 20A90M
H118	1	1	1	1	HD1000302	Diode, 20A90M
H119	1	1	1	1	HD1000302	Diode, 20A90M
H201	1	1	1	1	HC1000301	IC, HA1151
H301	1	1	1	1	HC1000401	IC, HA1156
H302	1	1	1	1	HT105641B	Transistor, 2SA564 (Q)
H303	1	1	1	1	HT308281C	Transistor, 2SC828 (Q)
H304	1	1	1	1	HT308281C	Transistor, 2SC828 (Q)
H305	1	1	1	1	HT308281C	Transistor, 2SC828 (Q)
H306	1	1	1	1	HT105641B	Transistor, 2SA564 (Q)
H307	1	1	1	1	HT105641B	Transistor, 2SA564 (Q)
J101	?	10	10	10	YP1000114	Plug
J110	?	15	15	15	YP1000114	Plug
J112	?	15	15	15	YP1000114	Plug
J126	1	1	1	1	YP1000114	Plug
J131	1	1	1	1	YP1000114	Plug
J132	1	1	1	1	YP1000114	Plug
GENERAL MISCELLANEOUS						
0803	1	1	1	1	389610903	Shield, VC
0804	1	1	1	1	285010902	Shield, PWB (Rear)
0836	1	1	1	1	282110901	Shield, VC
EQL. AMP. CIRCUIT BOARD-P400						
P400	1	1	1	1	YD3896001	P.W. Board, EQL. Amp. (Print Only)
	1	1	1	1	ZZ3920201	P.W. Board Assembly
P400-SPACERS						
P408	2	2	2	2	344411805	Spacer, R421

REF. DESIG	Q'TY				PART NO.	DESCRIPTION
	U	C	E	N		
P400-RESISTORS						
R401	1	1	1	1	RT0510214	Fixed, 1KΩ ±5%, ¼W
R402	1	1	1	1	RT0510214	Fixed, 1KΩ ±5%, ¼W
R403	1	1	1	1	RT0551114	Fixed, 510Ω ±5%, ¼W
R404	1	1	1	1	RT0551114	Fixed, 510Ω ±5%, ¼W
R405	1	1	1	1	RT0568314	Fixed, 68KΩ ±5%, ¼W
R406	1	1	1	1	RT0568314	Fixed, 68KΩ ±5%, ¼W
R407	1	1	1	1	RN0527414	Fixed, 270KΩ ±5%, ¼W
R408	1	1	1	1	RN0527414	Fixed, 270KΩ ±5%, ¼W
R409	1	1	1	1	RN0518414	Fixed, 180KΩ ±5%, ¼W
R410	1	1	1	1	RN0518414	Fixed, 180KΩ ±5%, ¼W
R411	1	1	1	1	RN0527414	Fixed, 270KΩ ±5%, ¼W
R412	1	1	1	1	RN0527414	Fixed, 270KΩ ±5%, ¼W
R413	1	1	1	1	RT0522314	Fixed, 22KΩ ±5%, ¼W
R414	1	1	1	1	RT0522314	Fixed, 22KΩ ±5%, ¼W
R415	1	1	1	1	RT0568114	Fixed, 680Ω ±5%, ¼W
R416	1	1	1	1	RT0568114	Fixed, 680Ω ±5%, ¼W
R417	1	1	1	1	RT0510414	Fixed, 100KΩ ±5%, ¼W
R418	1	1	1	1	RT0510414	Fixed, 100KΩ ±5%, ¼W
R419	1	1	1	1	RT0522314	Fixed, 22KΩ ±5%, ¼W
R420	1	1	1	1	RT0522314	Fixed, 22KΩ ±5%, ¼W
R421	1	1	1	1	RT0510214	Fixed, 1KΩ ±5%, ¼W
R422	1	1	1	1	RT0518414	Fixed, 180KΩ ±5%, ¼W
P400-CAPACITORS						
C401	1	1	1	1	EV1050256	Electrolytic, 1.0μF, 25V
C402	1	1	1	1	EV1050256	Electrolytic, 1.0μF, 25V
C403	1	1	1	1	DD1650001	Ceramic, 50PF, ±10%
C404	1	1	1	1	DD1650001	Ceramic, 50PF, ±10%
C405	1	1	1	1	EA1070109	Electrolytic, 100μF, 10V
C406	1	1	1	1	EA1070109	Electrolytic, 100μF, 10V
C407	1	1	1	1	DK1710201	Ceramic, 0.001μF, ±20%
C408	1	1	1	1	DK1710201	Ceramic, 0.001μF, ±20%
C409	1	1	1	1	DF1512301	Film, 0.012μF, ±5%
C410	1	1	1	1	DF1512301	Film, 0.012μF, ±5%
C411	1	1	1	1	DF1533201	Film, 0.0033μF, ±5%
C412	1	1	1	1	DF1533201	Film, 0.0033μF, ±5%
C413	1	1	1	1	EA1050509	Electrolytic, 1μF, 50V
C415	1	1	1	1	EE1050505	Electrolytic, 1.0μF, 50V
C416	1	1	1	1	EE1050505	Electrolytic, 1.0μF, 50V
C417	1	1	1	1	EA1070359	Electrolytic, 100μF, 35V
P400-MISCELLANEOUS						
H401	1	1	1	1	HC1001105	IC, TA7129P
H402	1	1	1	1	HC1001105	IC, TA7129P
J401	?	8	8	8	YP1000113	Plug
J408	?	8	8	8	YP1000113	Plug
GENERAL MISCELLANEOUS						
1009	4	4	4	4	51100306A	B.H.M. Screw, B3 x 6
1012	2	2	2	2	51100314B	B.H.M. Screw, B3 x 14
1013	2	2	2	2	53110303E	Hexagon Nut
1014	2	2	2	2	54040302N	Washer
1015	2	2	2	2	54020301E	Flat Washer P
POWER AMP. CIRCUIT BOARD-P700						
P700	1	1	1	1	YD3920103	P.W. Board, Power Amp.(Print only)
	1	1	1	1	ZZ3920103	P.W. Board Assembly
P700-SPACERS						
P708	20	20	20	20	293311802	Spacer, R757,758,749,750,751,752,759,760,761,762
P700-RESISTORS						
R701	1	1	1	1	RT0520214	Fixed, 2KΩ ±5%, ¼W
R702	1	1	1	1	RT0520214	Fixed, 2KΩ ±5%, ¼W

U: U.S.A.
 C: Canada
 E: Europe
 N: Scandinavia

REF. DESIG.	Q'TY				PART NO.	DESCRIPTION
	U	C	E	N		
R703	1	1	1	1	RT0533314	Fixed, 33KΩ ±5%, ¼W
R704	1	1	1	1	RT0533314	Fixed, 33KΩ ±5%, ¼W
R705	1	1	1	1	RT0568214	Fixed, 6.8KΩ ±5%, ¼W
R706	1	1	1	1	RT0568214	Fixed, 6.8KΩ ±5%, ¼W
R707	1	1	1	1	RT0510214	Fixed, 1KΩ ±5%, ¼W
R708	1	1	1	1	RT0510214	Fixed, 1KΩ ±5%, ¼W
R709	1	1	1	1	RT0582214	Fixed, 8.2KΩ ±5%, ¼W
R710	1	1	1	1	RT0582214	Fixed, 8.2KΩ ±5%, ¼W
R711	1	1	1	1	RA0502017	Trimming, 5KΩ (B)
R712	1	1	1	1	RA0502017	Trimming, 5KΩ (B)
R713	1	1	1	1	RT0518314	Fixed, 18KΩ ±5%, ¼W
R714	1	1	1	1	RT0518314	Fixed, 18KΩ ±5%, ¼W
R715	1	1	1	1	RT0515414	Fixed, 150KΩ ±5%, ¼W
R716	1	1	1	1	RT0515414	Fixed, 150KΩ ±5%, ¼W
R717	1	1	1	1	RT0530214	Fixed, 3KΩ ±5%, ¼W
R718	1	1	1	1	RT0530214	Fixed, 3KΩ ±5%, ¼W
R719	1	1	1	1	RT0533314	Fixed, 33KΩ ±5%, ¼W
R720	1	1	1	1	RT0533314	Fixed, 33KΩ ±5%, ¼W
R721	1	1	1	1	GF0533014	Fixed, 33Ω ±5%, ¼W
R722	1	1	1	1	GF0533014	Fixed, 33Ω ±5%, ¼W
R723	1	1	1	1	GF0522114	Fixed, 220Ω ±5%, ¼W
R724	1	1	1	1	GF0522114	Fixed, 220Ω ±5%, ¼W
R725	1	1	1	1	RT0524214	Fixed, 2.4KΩ ±5%, ¼W
R726	1	1	1	1	RT0524214	Fixed, 2.4KΩ ±5%, ¼W
R727	1	1	1	1	RT0547214	Fixed, 4.7KΩ ±5%, ¼W
R728	1	1	1	1	RT0547214	Fixed, 4.7KΩ ±5%, ¼W
R729	1	1	1	1	RT0575014	Fixed, 75Ω ±5%, ¼W
R730	1	1	1	1	RT0575014	Fixed, 75Ω ±5%, ¼W
R733	1	1	1	1	RA0301002	Trimming, 300Ω (B)
R734	1	1	1	1	RA0301002	Trimming, 300Ω (B)
R735	1	1	1	1	RT0539114	Fixed, 390Ω ±5%, ¼W
R736	1	1	1	1	RT0539114	Fixed, 390Ω ±5%, ¼W
R737	1	1	1	1	GF0515114	Fixed, 150Ω ±5%, ¼W
R738	1	1	1	1	GF0515114	Fixed, 150Ω ±5%, ¼W
R739	1	1	1	1	GF0520114	Fixed, 200Ω ±5%, ¼W
R740	1	1	1	1	GF0520114	Fixed, 200Ω ±5%, ¼W
R741	1	1	1	1	GF0513214	Fixed, 1.3KΩ ±5%, ¼W
R742	1	1	1	1	GF0513214	Fixed, 1.3KΩ ±5%, ¼W
R743	1	1	1	1	GF0539214	Fixed, 3.9KΩ ±5%, ¼W
R744	1	1	1	1	GF0539214	Fixed, 3.9KΩ ±5%, ¼W
R745	1	1	1	1	GF0513214	Fixed, 1.3KΩ ±5%, ¼W
R746	1	1	1	1	GF0513214	Fixed, 1.3KΩ ±5%, ¼W
R747	1	1	1	1	GF0510114	Fixed, 100Ω ±5%, ¼W
R748	1	1	1	1	GF0510114	Fixed, 100Ω ±5%, ¼W
R749	1	1	1	1	GF0510114	Fixed, 100Ω ±5%, ¼W
R750	1	1	1	1	GF0510114	Fixed, 100Ω ±5%, ¼W
R751	1	1	1	1	GF0510014	Fixed, 10Ω ±5%, ¼W
R752	1	1	1	1	GF0510014	Fixed, 10Ω ±5%, ¼W
R753	1	1	1	1	GF0522112	Fixed, 220Ω ±5%, ½W
R754	1	1	1	1	GF0522112	Fixed, 220Ω ±5%, ½W
R755	1	1	1	1	GF0522112	Fixed, 220Ω ±5%, ½W
R756	1	1	1	1	GF0522112	Fixed, 220Ω ±5%, ½W
R757	1	1	1	1	GF0510014	Fixed, 10Ω ±5%, ¼W
R758	1	1	1	1	GF0510014	Fixed, 10Ω ±5%, ¼W
R759	1	1	1	1	RW1000503	Fixed, 0.5Ω ±10%, 3W
R760	1	1	1	1	RW1000503	Fixed, 0.5Ω ±10%, 3W
R761	1	1	1	1	RW1000503	Fixed, 0.5Ω ±10%, 3W
R762	1	1	1	1	RW1000503	Fixed, 0.5Ω ±10%, 3W
R763	1	1	1	1	GJ0510002	Fixed, 10Ω ±5%, 2W
R764	1	1	1	1	GJ0510002	Fixed, 10Ω ±5%, 2W
R765	1	1	1	1	GF0522014	Fixed, 22Ω ±5%, ¼W
R766	1	1	1	1	GF0510212	Fixed, 1KΩ ±5%, ½W
R767	1	1	1	1	RC1002212	Fixed, 2.2Ω ±10%, ½W
R768	1	1	1	1	RC1002212	Fixed, 2.2Ω ±10%, ½W
R769	1	1	1	1	RC0000012	Fixed, 0Ω ±5%, ¼W

REF. DESIG.	Q'TY					PART NO.	DESCRIPTION
	U	C	E	U	U		
P700-CAPACITORS							
C701	1	1	1	1	1	EE3350255	Electrolytic, 3.3μF, 25V ±20%
C702	1	1	1	1	1	EE3350255	Electrolytic, 3.3μF, 25V ±20%
C703	1	1	1	1	1	DD1620101	Ceramic, 200PF, 50V
C704	1	1	1	1	1	DD1620101	Ceramic, 200PF, 50V
C705	1	1	1	1	1	EE4760165	Electrolytic, 47μF, 16V ±20%
C706	1	1	1	1	1	EE4760165	Electrolytic, 47μF, 16V ±20%
C707	1	1	1	1	1	DD1105050	Ceramic, 5PF, 500V
C708	1	1	1	1	1	DD1105050	Ceramic, 5PF, 500V
C709	1	1	1	1	1	EA4760509	Electrolytic, 47μF, 50V +100%, -0%
C710	1	1	1	1	1	EA4760509	Electrolytic, 47μF, 50V +100%, -0%
C711	1	1	1	1	1	DK1610150	Ceramic, 100PF
C712	1	1	1	1	1	DK1610150	Ceramic, 100PF
C713	1	1	1	1	1	DF1710452	Film, 0.1μF, 200V
C714	1	1	1	1	1	DF1710452	Film, 0.1μF, 200V
C715	1	1	1	1	1	EA2270509	Electrolytic, 220μF, 50V +100%, -0%
C716	1	1	1	1	1	EA1060169	Electrolytic, 10μF, 16V +100%, -0%
P700-SEMICONDUCTORS & COILS							
H701	1	1	1	1	1	HT108361E	Transistor, 2SA836 E, F
H702	1	1	1	1	1	HT108361E	Transistor, 2SA836 E, F
H703	1	1	1	1	1	HT108361E	Transistor, 2SA836 E, F
H704	1	1	1	1	1	HT108361E	Transistor, 2SA836 E, F
H705	1	1	1	1	1	HD2001001	Diode, 1S2076A
H706	1	1	1	1	1	HD2001001	Diode, 1S2076A
H707	1	1	1	1	1	HT318853C	Transistor, 2SC1885 R, S, T
H708	1	1	1	1	1	HT318853C	Transistor, 2SC1885 R, S, T
H709	1	1	1	1	1	HT309451Q	Transistor, 2SC745 Q
H710	1	1	1	1	1	HT309451Q	Transistor, 2SC745 Q
H711	1	1	1	1	1	HT107331Q	Transistor, 2SA733Q
H712	1	1	1	1	1	HT107331Q	Transistor, 2SA733Q
H713	1	1	1	1	1	HD2001001	Diode, 1S2076A
H714	1	1	1	1	1	HD2001001	Diode, 1S2076A
H715	1	1	1	1	1	HD2001001	Diode, 1S2076A
H716	1	1	1	1	1	HD2001001	Diode, 1S2076A
H717	1	1	1	1	1	HD2001001	Diode, 1S2076A
H718	1	1	1	1	1	HD2001001	Diode, 1S2076A
H719	1	1	1	1	1	HD2001001	Diode, 1S2076A
H720	1	1	1	1	1	HD2001001	Diode, 1S2076A
H721	1	1	1	1	1	HT315671Q	Transistor, 2SC1567Q, R
H722	1	1	1	1	1	HT315671Q	Transistor, 2SC1567Q, R
H723	1	1	1	1	1	HT107941Q	Transistor, 2SA794 Q, R
H724	1	1	1	1	1	HT107941Q	Transistor, 2SA794 Q, R
H725	1	1	1	1	1	HD3003009	Diode, WZ-177
H726	1	1	1	1	1	HD2001001	Diode, 1S2076A
H727	1	1	1	1	1	HD2001001	Diode, 1S2076A
L701	1	1	1	1	1	LC2262001	Coil, 2.6μH
L702	1	1	1	1	1	LC2262001	Coil, 2.6μH
P700-MISCELLANEOUS							
F701	1	1				FS1035001	Fuse, 3.5A, UL
F702	1	1				FS1035001	Fuse, 3.5A, UL
F701			1			FS1040090	Fuse, 4A, SGA
F702			1			FS1040090	Fuse, 4A, SGA
F701				1		FS1035080	Fuse, 3.5A, SEMKO
F702				1		FS1035080	Fuse, 3.5A, SEMKO
J701		25	25	25	25	YP1000113	Plug
J726							
J727							
J730		4	4	4	4	YJ0800021	Jack
J731	1	1	1	1	1	YP1000113	Plug
J732	1	1	1	1	1	YP1000113	Plug
R731	1	1	1	1	1	HH0000303	Thermistor, STD-04
R732	1	1	1	1	1	HH0000303	Thermistor, STD-04

U: U.S.A.
 C: Canada
 E: Europe
 N: Scandinavia

REF. DESIG.	Q'TY			PART NO.	DESCRIPTION
	U	C	E N		
1018	4	4	4	1	290426702 Heat Sink, Transistor
1019	4	4	4	1	51102606S B.H.M. Screw, B2.6 x 6
H005	1	1	1	1	HV0000508 Varistor, STV-3H
H006	1	1	1	1	HV0000508 Varistor, STV-3H
2236			2	392026510	Indicator, Ampere
1002	1	1	1	1	392026701 Heatsink
1004	1	1	1	1	392016002 Bracket
1005	1	1	1	1	392016003 Bracket
1007	4	4	4	4	51380306P P.H. Tapped Screw, P3 x 6ST
1208	8	8	8	8	51100316E B.H.M. Screw, B3 x 16
H001	1	1	1	1	HT308971B Transistor, 2SC897 (B) or (C)
H002	1	1	1	1	HT308971B Transistor, 2SC897 (B) or (C)
H003	1	1	1	1	HT107571B Transistor, 2SA757 (B) or (C)
H004	1	1	1	1	HT107571B Transistor, 2SA757 (B) or (C)
J009	1	1	1	1	YJ0500020 Socket, Transistor
J010	1	1	1	1	YJ0500020 Socket, Transistor
J011	1	1	1	1	YJ0500020 Socket, Transistor
J012	1	1	1	1	YJ0500020 Socket, Transistor
0815	1	1	1	1	121000501 Clamper
POWER SUPPLY CIRCUIT BOARD-P800					
P800	1	1	1	1	YD3920104 P.W. Board, Power Supply(Print only)
	1	1	1	1	ZZ3920104 P.W. Board Assembly
P800-SPACERS					
P808	17	17	17	17	293311802 Spacer, H804, H805, H806, H803, R801, R807, R808, R809, R810
P800-RESISTORS					
R801	1	1	1	1	GF0533014 Fixed, 33Ω ±5%, ¼W
R802	1	1	1	1	RT0547214 Fixed, 4.7KΩ ±5%, ¼W
R803	1	1	1	1	RT0547214 Fixed, 4.7KΩ ±5%, ¼W
R804	1	1	1	1	GF0539214 Fixed, 3.9KΩ ±5%, ¼W
R805	1	1	1	1	RT0536314 Fixed, 36KΩ ±5%, ¼W
R806	1	1	1	1	RA0502020 Trimming, 5KΩ (B)
R807	1	1	1	1	GF0510112 Fixed, 100Ω ±5%, ¼W
R808	1	1	1	1	GJ0539103 Fixed, 390Ω ±5%, 3W
R809	1	1	1	1	GJ0522102 Fixed, 220Ω ±5%, 2W
R810	1	1	1	1	GF0530012 Fixed, 30Ω ±5%, ¼W
R811	1	1	1	1	RT0582214 Fixed, 8.2KΩ ±5%, ¼W
P800-CAPACITORS					
C801	1	1	1	1	EA3370631 Electrolytic, 330μF, 63V
C802	1	1	1	1	EA1070509 Electrolytic, 100μF, 50V
C803	1	1	1	1	DK1810351 Ceramic, 0.01μF +100%~-0%
C804	1	1	1	1	DK1710301 Ceramic, 0.01μF ±20%
C805	1	1	1	1	EA1060359 Electrolytic, 10μF, 35V
C806	1	1	1	1	EA1070509 Electrolytic, 100μF, 50V
C807	1	1	1	1	EA3370359 Electrolytic, 330μF, 35V
C808	1	1	1	1	DK1710301 Ceramic, 0.01μF ±20%
C809	1	1	1	1	EA4770169 Electrolytic, 470μF, 16V
C810	1	1	1	1	EA1060509 Electrolytic, 10μF, 50V
P800-SEMICONDUCTORS					
H801	1	1	1	1	HT403302A Transistor, 2SD330 (D) or (E)
H802	1	1	1	1	HT313183A Transistor, 2SC1318 P, Q, R
H803	1	1	1	1	HD2001103 Diode, DS131-B
H804	1	1	1	1	HD3002309 Diode, WZ-071
H805	1	1	1	1	HD3002709 Diode, WZ-140
H806	1	1	1	1	HD2000110 Diode, 10D-2
P800-MISCELLANEOUS					
J801	1	1	1	1	YP1000113 Plug
J811	1	1	1	1	YP1000113 Plug
GENERAL MISCELLANEOUS					
1122	1	1	1	1	390526701 Heatsink, Transistor
1123	1	1	1	1	51100304A B.H.M. Screw, B3 x 4

REF. DESIG.	Q'TY			PART NO.	DESCRIPTION
	U	C	E N		
PJ01	1	1	1	1	YD3920006 PHONO CIRCUIT BOARD-PJ01
	1	1	1	1	ZZ3920006 P.W. Board, Phono (Print only)
					P.W. Board Assembly
PJ01-RESISTORS					
RJ01	1	1	1	1	RT0568414 Fixed, 680KΩ 5%, ¼W
RJ02	1	1	1	1	RT0547414 Fixed, 470KΩ 5%, ¼W
RJ03	1	1	1	1	RT0533314 Fixed, 33KΩ 5%, ¼W
RJ04	1	1	1	1	RT0510014 Fixed, 10Ω 5%, ¼W
PJ01-MISCELLANEOUS					
CJ01	1	1	1	1	EÁ1070109 Electrolytic, Capacitor 100μF, 10V
HJ01	1	1	1	1	HT309452B Transistor, 2SC945
HJ02	1	1	1	1	HT309452B Transistor, 2SC945
HJ03	1	1	1	1	HT309452B Transistor, 2SC945
HJ04	1	1	1	1	HD3002409 Diode, WZ-120
JJ01	1	1	1	1	YP1000113 Plug
JJ05	5	5	5	5	YP1000113 Plug
GENERAL MISCELLANEOUS					
0201	1	1	1	1	392016001 Bracket
0203	1	1	1	1	287126250 Pulley K
0208	1	1	1	1	287327350 Flywheel K
0209	1	1	1	1	389912001 Insulator
0210	1	1	1	1	389012001 Insulator
0211	1	1	1	1	287316004 Bracket
0212	1	1	1	1	287316005 Bracket
0214	2	2	2	2	51100305A B.H.M. Screw, B3 x 5
0215	2	2	2	2	51100305A B.H.M. Screw, B3 x 5
0216	2	2	2	2	51100305A B.H.M. Screw, B3 x 5
0217	1	1	1	1	51100305A B.H.M. Screw, B3 x 5
0218	2	2	2	2	51100305A B.H.M. Screw, B3 x 5
0219	4	4	4	4	51100305A B.H.M. Screw, B3 x 5
0221	2	2	2	2	51042608A P.H.M. Screw, P2.6 x 8
0411	1	1	1	1	391705301 Cover
0415	2	2	2	2	51100306A B.H.M. Screw, B3 x 6
S001	1	1	1	1	SR1405002 Rotary Switch, Selector
R015	1	1	1	1	RT0510214 Resistor, Fixed, 1KΩ ±5%, ¼W
R016	1	1	1	1	RT0530014 Resistor, Fixed, 30Ω ±5%, ¼W
R001	1	1	1	1	RM0254023 Variable Resistor, 250KΩ
TONE AMP. CIRCUIT BOARD-PE01					
PE01	1	1	1	1	YD3920102 P.W. Board, Tone Amp.(Print only)
	1	1	1	1	ZZ3920102 P.W. Board Assembly
PE01-RESISTORS					
RE01	1	1	1	1	RT0547414 Fixed, 470KΩ ±5%, ¼W
RE02	1	1	1	1	RT0547414 Fixed, 470KΩ ±5%, ¼W
RE03	1	1	1	1	RT0510214 Fixed, 1KΩ ±5%, ¼W
RE04	1	1	1	1	RT0510214 Fixed, 1KΩ ±5%, ¼W
RE05	1	1	1	1	RN0515514 Fixed, 1.5MΩ ±5%, ¼W
RE06	1	1	1	1	RN0515514 Fixed, 1.5MΩ ±5%, ¼W
RE07	1	1	1	1	RT0510414 Fixed, 100KΩ ±5%, ¼W
RE08	1	1	1	1	RT0510414 Fixed, 100KΩ ±5%, ¼W
RE09	1	1	1	1	RT0568314 Fixed, 68KΩ ±5%, ¼W
RE10	1	1	1	1	RT0568314 Fixed, 68KΩ ±5%, ¼W
RE11	1	1	1	1	RT0510214 Fixed, 1KΩ ±5%, ¼W
RE12	1	1	1	1	RT0510214 Fixed, 1KΩ ±5%, ¼W
RE13	1	1	1	1	RT0510314 Fixed, 10KΩ ±5%, ¼W
RE14	1	1	1	1	RT0510314 Fixed, 10KΩ ±5%, ¼W
RE15	1	1	1	1	RT0510214 Fixed, 1KΩ ±5%, ¼W
RE16	1	1	1	1	RT0510214 Fixed, 1KΩ ±5%, ¼W
RE17	1	1	1	1	RT0522414 Fixed, 220KΩ ±5%, ¼W
RE18	1	1	1	1	RT0522414 Fixed, 220KΩ ±5%, ¼W

REF. DESIG.	Q'TY			PART NO.	DESCRIPTION
	U	C	N		
RE19	1	1	1	RN0522514	Fixed, 2.2M Ω \pm 5%, 1/4W
RE20	1	1	1	RN0522514	Fixed, 2.2M Ω \pm 5%, 1/4W
RE21	1	1	1	RT0568314	Fixed, 68K Ω \pm 5%, 1/4W
RE22	1	1	1	RT0568314	Fixed, 68K Ω \pm 5%, 1/4W
RE23	1	1	1	RT0510314	Fixed, 10K Ω \pm 5%, 1/4W
RE24	1	1	1	RT0510314	Fixed, 10K Ω \pm 5%, 1/4W
RE25	1	1	1	RT0510114	Fixed, 100 Ω \pm 5%, 1/4W
RE26	1	1	1	RT0510114	Fixed, 100 Ω \pm 5%, 1/4W
RE27	1	1	1	RT0510414	Fixed, 100K Ω \pm 5%, 1/4W
RE28	1	1	1	RT0510414	Fixed, 100K Ω \pm 5%, 1/4W
RE29	1	1	1	RM0204001	Variable, 200K Ω (B)
RE30	1	1	1	RM0204001	Variable, 200K Ω (B)
RE31	1	1	1	RT0539314	Fixed, 39K Ω \pm 5%, 1/4W
RE32	1	1	1	RT0539314	Fixed, 39K Ω \pm 5%, 1/4W
RE33	1	1	1	RT0510414	Fixed, 100K Ω \pm 5%, 1/4W
RE34	1	1	1	RT0510414	Fixed, 100K Ω \pm 5%, 1/4W
RE35	1	1	1	RT0527314	Fixed, 27K Ω \pm 5%, 1/4W
RE36	1	1	1	RT0527314	Fixed, 27K Ω \pm 5%, 1/4W
RE37	1	1	1	RT0527314	Fixed, 27K Ω \pm 5%, 1/4W
RE38	1	1	1	RT0527314	Fixed, 27K Ω \pm 5%, 1/4W
RE39	1	1	1	RT0510114	Fixed, 100 Ω \pm 5%, 1/4W
PE01-CAPACITORS					
CE01	1	1	1	DF1722401	Film, 0.22 μ F, \pm 20% 50V
CE02	1	1	1	DF1722401	Film, 0.22 μ F, \pm 20% 50V
CE03	1	1	1	EE1050505	Electrolytic, 1 μ F, 50V
CE04	1	1	1	EE1050505	Electrolytic, 1 μ F, 50V
CE05	1	1	1	EE1050505	Electrolytic, 1 μ F, 50V
CE06	1	1	1	EE1050505	Electrolytic, 1 μ F, 50V
CE07	1	1	1	EE4750255	Electrolytic, 4.7 μ F, 25V
CE08	1	1	1	EE4750255	Electrolytic, 4.7 μ F, 25V
CE09	1	1	1	EQ4750161	Electrolytic, 4.7 μ F, 16V
CE10	1	1	1	EQ4750161	Electrolytic, 4.7 μ F, 16V
CE11	1	1	1	DD1620101	Ceramic, 200PF, \pm 10%
CE12	1	1	1	DD1620101	Ceramic, 200PF, \pm 10%
CE13	1	1	1	DF1615301	Film, 0.015 μ F, \pm 10%
CE14	1	1	1	DF1615301	Film, 0.015 μ F, \pm 10%
CE15	1	1	1	DF1615301	Film, 0.015 μ F, \pm 10%
CE16	1	1	1	DF1615301	Film, 0.015 μ F, \pm 10%
CE17	1	1	1	EA1070359	Electrolytic, 100 μ F, 35V
PE01-MISCELLANEOUS					
HE01	1	1	1	HT313451E	Transistor, 2SC1345 E
HE02	1	1	1	HT313451E	Transistor, 2SC1345 E
HE03	1	1	1	HT108361E	Transistor, 2SA836 E
HE04	1	1	1	HT108361E	Transistor, 2SA836 E
HE05	1	1	1	HT313451E	Transistor, 2SC1345 E
HE06	1	1	1	HT313451E	Transistor, 2SC1345 E
JE01	7	7	7	YP1000113	Plug
JE07	7	7	7	YP1000113	Plug
GENERAL MISCELLANEOUS					
R011	1	1	1	GJ0515101	Resistor, Fixed, 150 Ω \pm 5%, 1W
R012	1	1	1	GJ0515101	Resistor, Fixed, 150 Ω \pm 5%, 1W
J013	1	1	1	YJ0100065	Jack, Phone
0230	1	1	1	391016002	Bracket
R002	1	1	1	RS0504003	Variable Resistor 500K Ω
S003	1	1	1	SP0301001	Power Switch, AC
M003	1	1	1	IM1104208	Meter, Tuning
C001	1	1	1	EA1070109	Electrolytic Capacitor 100 μ F, 10V
0413	1	1	1	288610701	Sheet
S002	1	1	1	SR1205010	Rotary Switch, Speaker
0403	1	1	1	388927401	Reflector
0405	1	1	1	388927101	Holder, Meter Lamp
0407	1	1	1	51480306A	B.H.M. Screw F B3 x 6
0409	1	1	1	51100306A	B.H.M. Screw F B3 x 6
J017	1	1	1	YJ0800019	Socket, Meter Lamp

REF. DESIG.	Q'TY			PART NO.	DESCRIPTION
	U	C	N		
M001	1	1	1	IN1008007	Lamp, Meter
DIAL LAMP CIRCUIT BOARD-PZ01					
PZ01	1	1	1	YD3917001	P.W. Board, Dial Lamp (Print only)
	1	1	1	ZZ3920301	P.W. Board Assembly
PZ01-MISCELLANEOUS					
MZ01	1	1	1	IN1008007	Lamp, Dial
MZ02	1	1	1	IN1008007	Lamp, Dial
MZ03	1	1	1	IN1008007	Lamp, Dial
MZ04	1	1	1	IN1008007	Lamp, Dial
MZ05	1	1	1	IN1008007	Lamp, Dial
MZ06	1	1	1	IN1008007	Lamp, Dial
GENERAL MISCELLANEOUS					
JZ01	12	12	12	YJ0800017	Socket, Lamp
JZ12	1	1	1	YP1000113	Plug
JZ13	1	1	1	YP1000113	Plug
JZ15	1	1	1	YP1000113	Plug
JZ17	1	1	1	YP1000113	Plug
JZ18	1	1	1	YP1000113	Plug
0521	1	1	1	289227101	Holder
0522	2	2	2	51570305B	P.H. Tapped Screw, P3 x 5ST
SELECTOR LAMP CIRCUIT BOARD-PY01					
PY01	1	1	1	YD3920005	P.W. Board, Selector Lamp(Print only)
	1	1	1	ZZ3920005	P.W. Board Assembly
PY01-MISCELLANEOUS					
MY01	1	1	1	IN1008037	Lamp, AM, 8V, 40mA
MY02	1	1	1	IN1008037	Lamp, STEREO, 8V, 40mA
MY03	1	1	1	IN1008037	Lamp, FM, 8V, 40mA
JY01	5	5	5	YP1000113	Plug
JY05	5	5	5	YP1000113	Plug
GENERAL MISCELLANEOUS					
0526	1	1	1	289227102	Holder
0527	1	2	2	51570306B	P.H. Tapped Screw, P3 x 6ST
0501	1	1	1	289227401	Reflector
0504	2	2	2	51480306A	B.H.M. Screw F, B3 x 6
0222	2	2	2	51100305A	B.H.M. Screw, B3 x 5
0301	1	1	1	391705101	Guide
0303	1	1	1	391826250	Pulley K
0308	1	1	1	287126252	Pulley K
0313	2	2	2	51100305A	B.H.M. Screw, B3 x 5
0314	2	2	2	51100305A	B.H.M. Screw, B3 x 5
PUSHSWITCH CIRCUIT BOARD-PS01					
PS01	1	1	1	YD3920004	P.W. Board, Pushswitch (Print only)
	1	1	1	ZZ3920004	P.W. Board Assembly
PS01-RESISTORS					
RS01	1	1	1	RT0512314	Fixed, 12K Ω \pm 5%, 1/4W
RS02	1	1	1	RT0512314	Fixed, 12K Ω \pm 5%, 1/4W
RS03	1	1	1	RT0515414	Fixed, 150K Ω \pm 5%, 1/4W
RS04	1	1	1	RT0515414	Fixed, 150K Ω \pm 5%, 1/4W
RS05	1	1	1	RT0510214	Fixed, 1K Ω \pm 5%, 1/4W
RS06	1	1	1	RT0510214	Fixed, 1K Ω \pm 5%, 1/4W
RS09	1	1	1	RT0547214	Fixed, 4.7K Ω \pm 5%, 1/4W
RS10	1	1	1	RT0547214	Fixed, 4.7K Ω \pm 5%, 1/4W
RS11	1	1	1	RN0522514	Fixed, 2.2M Ω \pm 5%, 1/4W
RS12	1	1	1	RN0522514	Fixed, 2.2M Ω \pm 5%, 1/4W
PS01-CAPACITORS					
CS01	1	1	1	DF1633301	Film, 0.033 μ F, \pm 10%
CS02	1	1	1	DF1633301	Film, 0.033 μ F, \pm 10%
CS03	1	1	1	DD1620101	Ceramic, 200PF, \pm 10%

U: U.S.A.
 C: Canada
 E: Europe
 N: Scandinavia

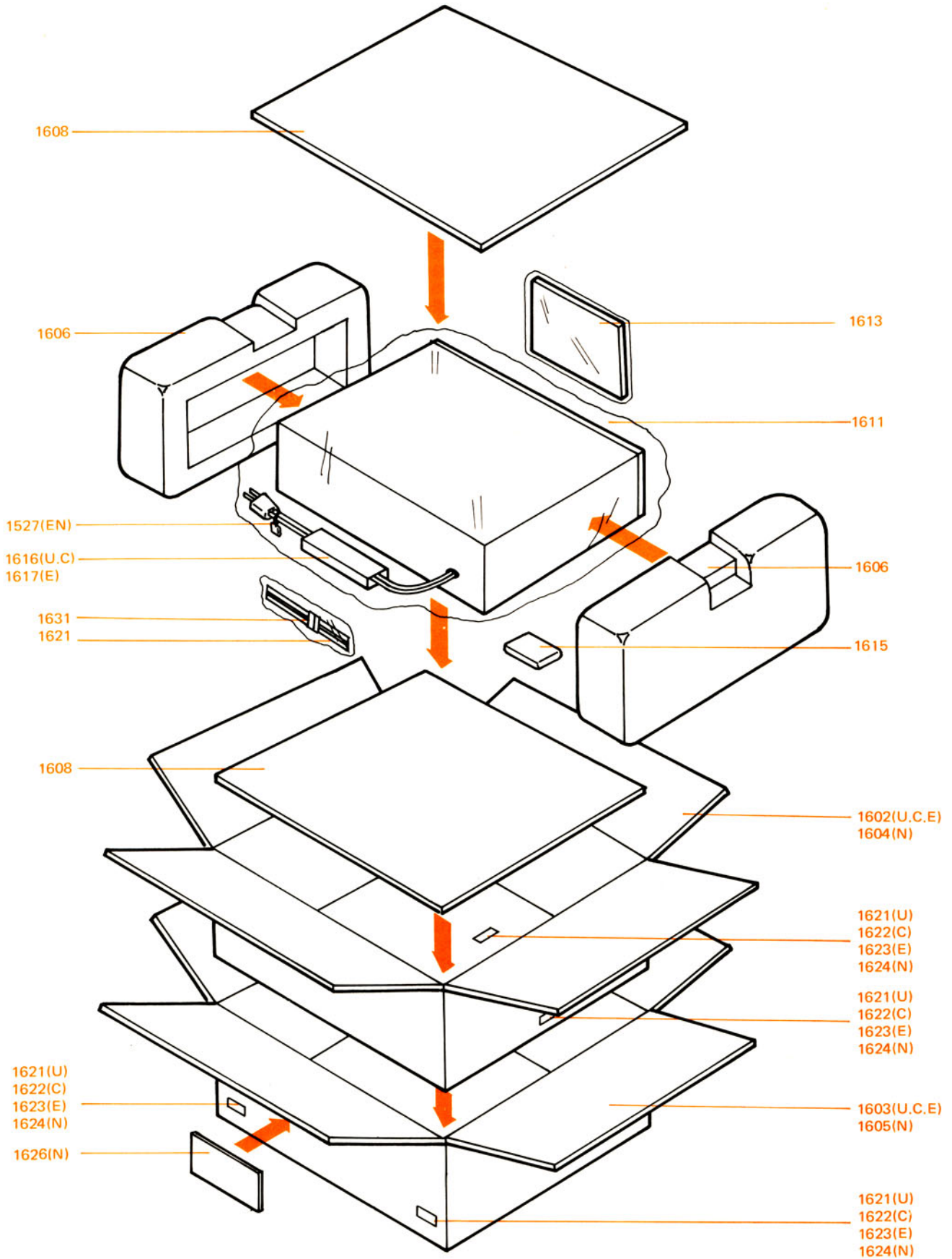
REF. DESIG.	Q'TY				PART NO.	DESCRIPTION
	U	C	E	N		
CS04	1	1	1	1	DD1620101	Ceramic, 200PF ±10%
CS05	1	1	1	1	DF1682201	Film, 0.0082µF ±10%
CS06	1	1	1	1	DF1682201	Film, 0.0082µF ±10%
PS01-MISCELLANEOUS						
SS01	1	1	1	1	SP0405014	Pushswitch
JS01	23	23	23	23	YP1000113	Plug
JS23						
S003			1		SP0401015	Power Switch, AC
0231			1		392012001	Insulator
0603	1	1	1	1	145525903	Bushing, Antenna Read
0604	1	1			145525903	Bushing, AC Cord
0607	3	3	3	3	51100306S	B.H.M. Screw, B3 x 6
0608	2	2	2	2	51100306S	B.H.M. Screw, B3 x 6
0609	2	2	2	2	51100308S	B.H.M. Screw, B3 x 8
0610	2	2	2	2	53110303A	Hexagon Nut
0611	2	2	2	2	51570306B	P.H. Tapped Screw, P3 x 6ST
0612	6	6	6	6	51100308S	B.H.M. Screw, B3 x 8
0613	6	6	6	6	53110303A	Hexagon Nut
0614	1	1	1	2	54020401E	Flat Washer P.
0615	1	1	1	2	54050400R	T.L. Washer OR
0616	1	1	1	2	53110403A	Hexagon Nut
0617			1	2	62041760W	Lug
0618	1	1	1	1	62041760W	Lug
0621			2		51060316A	P.H.M. Screw, P3 x 16
0622			2		54050300R	T.L. Washer OR
0623			2		53110303A	Hexagon Nut
0629			1		392016023	Bracket
0630			2		51100308S	B.H.M. Screw, B3 x 8
0631			2		53110303A	Hexagon Nut
0632			2		54050300R	T.L. Washer OR
1402			1		288286102	Label
F001	1	1			FS1040005	Fuse 4A, UL
F001			1		FS1030090	Fuse, 3A, SGA
F001			1		FS1031580	Fuse, 3.15A, SEMKO
W001	1	1			YC0240021	AC Cord
C005			1		DF1722380	Ceramic Capacitor, 0.022µF
G001	1	1			BF1040004	Printed Comp. 0.1µF + 120Ω
J001	1	1	1	1	YT0104015	Terminal, Antenna
J004	1	1	1	1	YT0206008	Terminal, Aux, Tape, PHONO
J005	1	1	1	1	YL0301021	Terminal, Ground
J006	1	1	1	1	YT0304006	Terminal, Main Speaker
J007	1	1	1	1	YT0304006	Terminal, Remote Speaker
J008	1	1	1	1	YT0304006	Terminal, Quadrphase Speaker
J015			1		YJ0400056	Jack, AC Outlet
J016			1		YJ0400056	Jack, AC Outlet
J018	1	1			YJ0800012	Socket, Fuse
J018			1		YJ0800022	Socket, Fuse
J020			1		YP0400056	Jack, AC Inlet
J021			1		YL0301021	Terminal, Ground (AC)
1118	2	2	2	2	51100308S	B.H.M. Screw, B3 x 8
1119	2	2	2	2	53110303A	Hexagon Nut
1120	2	2	2	2	51100308S	B.H.M. Screw, B3 x 8
1121	2	2	2	2	53110303A	Hexagon Nut
J003	1	1	1	1	YT0204008	Terminal, Tape In/Out
R013	1	1			RC1022512	Resistor, 2.2MΩ ±10%, ½W
J002	1	1	1	1	YT0201009	Terminal, 4-CH FM Output
0703	1	1	1	1	257816052	Bracket K
0707	1	1	1	1	281927103	Holder
0709	2	2	2	2	51100310S	B.H.M. Screw, B3 x 10
0710	2	2	2	2	53110303E	Hexagon Nut
0711	2	2	2	2	51100308S	B.H.M. Screw, B3 x 8
0712	2	2	2	2	54050300R	T.L. Washer OR
0713	2	2	2	2	53110303E	Hexagon Nut

REF. DESIG.	Q'TY				PART NO.	DESCRIPTION
	U	C	E	N		
L001	1	1	1	1	LF1120043	Antenna Coil, AM
TAPE IN/OUT CIRCUIT BOARD-PV51						
PV51			1		YD3917002	P.W. Board Tape In/Out (Print only)
			1		ZZ3917002	P.W. Board Assembly
PV51-MISCELLANEOUS						
RV51			1		RT0533414	Resistor, Fixed, 330KΩ ±5%, ¼W
RV52			1		RT0533414	Resistor, Fixed, 330KΩ ±5%, ¼W
RV53			1		RT0510414	Resistor, Fixed, 100KΩ ±5%, ¼W
RV54			1		RT0510414	Resistor, Fixed, 100KΩ ±5%, ¼W
CV51			1		DK1810301	Capacitor, Ceramic, 0.01µF, ±20%
JV51			1		BY0105005	Terminal
JV52						
?			6		YP1000120	Plug
JV57						
GENERAL MISCELLANEOUS						
J022			1		YJ1100001	Jack, DIN
R005			1		RT0533414	Resistor, Fixed, 330KΩ ±5%, ¼W
R006			1		RT0533414	Resistor, Fixed, 330KΩ ±5%, ¼W
R007			1		RT0510414	Resistor, Fixed, 100KΩ ±5%, ¼W
R008			1		RT0510414	Resistor, Fixed, 100KΩ ±5%, ¼W
H007	1	1	1	1	HD2000510	Diode, 5B-2
C007	1	1	1	1	DK1810351	Ceramic Capacitor, 0.01µF +100%~-0%
R009	1	1	1	1	GJ0533102	Resistor, Fixed, 330Ω ±5%, 2W
R010	1	1	1	1	GJ0533102	Resistor, Fixed, 330Ω ±5%, 2W
J014	1	1	1	1	YL0105011	Terminal, 5-Pin
0818	1	1	1	1	392030201	Dial
C006	1	1	1	1	ES1090501	Electrolytic, Capacitor 10000µF x 2, 50V
C003	1	1	1	1	DK1710301	Ceramic, Capacitor 0.01µF ±20%
0529	1	1	1	1	62030039W	Lug
0813	1	2	2	2	282100501	Clamper
J019			1		BY0311001	Terminal, Voltage Conversion
FUSE CIRCUIT BOARD-PP01						
PP01			1		YD3920007	P.W. Board, Fuse (Print only)
			1		ZZ3920007	P.W. Board Assembly
PP01			1		YD3920008	P.W. Board, Fuse (Print only)
			1		ZZ3920008	P.W. Board Assembly
PP01-MISCELLANEOUS						
FP01			1		FS1035080	Fuse, 3.5A, SEMKO
FP02			1		FS1010080	Fuse, 1A, SEMKO
FP03			1		FS1010080	Fuse, 1A, SEMKO
FP01			1		FS1035090	Fuse, 3.5A, SGA
FP02			1		FS1010090	Fuse, 1A, SGA
FP03			1		FS1010090	Fuse, 1A, SGA
FP01			1		FS1010090	Fuse, 1A SGA
FP02			1		FS1040090	Fuse, 4A SGA
FP03			1		FS1040090	Fuse, 4A SGA
JP01			6		YP1000113	Plug
?			6			
JP06						
JP07			6		YJ0800020	Socket
?			6			
JP12						
GENERAL MISCELLANEOUS						
C004	1	1	1	1	DK1710301	Ceramic, Capacitor 0.01µF ±20%
0530	1	1	1	1	62030039W	Lug
R014	1	1	1	1	GY0510020	Resistor, Fixed, 10Ω ±5%, 20W
C002	1	1	1	1	DK1710301	Ceramic, Capacitor 0.01µF ±20%
C008	1	1	1	1	DK1710301	Ceramic, Capacitor 0.01µF ±20%
0531	1	1	1	1	62030039W	Lug
0816	1	1	1	1	287100501	Clamper
1016	4	4	4	4	51570306B	P.H. Tapped Screw, P3 x 6ST
1101	4	4	4	4	287205701	Leg
1102	4	4	4	4	51440418A	P.H.M. Screws, P4 x 8
1103	1	1	1	1	53110303A	Hexagon Nut

U: U.S.A.
 C: Canada
 E: Europe
 N: Scandinavia

REF. DESIG	Q'TY				PART NO.	DESCRIPTION
	U	C	E	N		
1104	1	1	1	1	392010550	Chassis K
1110	1	1	1	1	388916011	Bracket
1111	2	2	2	2	51100306A	B.H.M. Screw, B3 x 6
1113	2	2	2	2	392016004	Bracket
1114	1	1	1	1	281900501	Clamper
1115	4	4	4	4	51570306B	P.H. Tapped Screw, P3 x 6ST
1116	1				951022101	Label, Fuse Caution
1117	6	6	6	6	51100306S	B.H.M. Screw, B3 x 6
7836					392012002	Insulator
1124	6	6	6	6	51570306B	P.H. Tapped Screw, P3 x 6ST
1125	6	6	6	6	51570306B	P.H. Tapped Screw, P3 x 6ST
1127	4	4	4	4	51100305A	B.H.M. Screw, B3 x 5
1128	3	3	3	3	51570408B	P.H. Tapped Screw, P4 x 8ST
1129	1	1	1	1	51570306B	P.H. Tapped Screw, P3 x 6ST
1130	2	2	2	2	51100304A	B.H.M. Screw, B3 x 4
1131	4	4	4	4	51490410A	B.H.M. Screw, B4 x 10
1132	1	1	1	1	54050300R	T.L. Washer OR
1133	4	4	4	4	53110401A	Hexagon Nut
1134	4	4	4	4	51570306B	P.H. Tapped Screw, P3 x 6ST
0810	1	1	1	1	54050300R	T.L. Washer R
0811	1	1	1	1	138200503	Clamper
7936	1	1	1	1	51570306B	P.H. Tapped Screw, P3 x 6ST
0820	1	1	1	1	288111801	Spacer
0535					62030039W	Lug
1212	1	1	1	1	51100305A	B.H.M. Screw, B3 x 5
1213	2	2	2	2	51100305A	B.H.M. Screw, B3 x 5
1214	2	2	2	2	51100305A	B.H.M. Screw, B3 x 5
1215	1	1	1	1	391810101	Support
1221	3	3	3	3	392010102	Support
1222	3	3	3	3	51062605A	P.H.M. Screw, P2.6 x 5
1225	1	1	1	1	282100501	Clamper
1226	6	6	6	6	288600505	Clamper
1228	1	1	1	1	288600503	Clamper
1230	1	1	1	1	288512005	Insulator
1232	2	2	2	2	51100306S	B.H.M. Screw, B3 x 6
1302	1	1	1	1	391715401	Knob, Tuning
1304	5	5	5	5	391715402	Knob, 18mm Dia.
1306	1	1	1	1	391715405	Knob, Power
1308	1	1	1	1	391715406	Knob, Balance
1310	5	5	5	5	391715405	Knob, Pushswitch
L002	1				TS1960601	Power Transformer
L002	1				TS1960602	Power Transformer
L002	1				TS1960603	Power Transformer
0532	1	1	1	1	62030039W	Lug
0533	1	1	1	1	62030039W	Lug
0534	1	1	1	1	62030039W	Lug
1203	1	1	1	1	62041760W	Lug
1202	1	1	1	1	54050400R	T.L. Washer OR
1204	1	1	1	1	53110403A	Hexagon Nut
W001					YC0190003	AC Cord
0926	1	1	1	1	289105601	Buffer
1313	1	1	1	1	392006450	Case K
8236					392006451	Case K, Black
1317	4	4	4	4	390625901	Bush
1318	4	4	4	4	51100416S	B.H.M. Screw, B4 x 16
1320	1	1	1	1	392025701	Lid
1321	9	9	9	9	51100305S	B.H.M. Screw, B3 x 5
1323	2	2	2	2	51100305A	B.H.M. Screw, B3 x 5
1324	3	3	3	3	51100305A	B.H.M. Screw, B3 x 5
1326	1				392026501	Indicator
1327	1				392026502	Indicator
1328					392026503	Indicator
1329					392026504	Indicator
1330					392026505	Indicator
1333	2	2	2	2	51100306S	B.H.M. Screw, B3 x 6

REF. DESIG	Q'TY				PART NO.	DESCRIPTION
	U	C	E	N		
1402	1				951120102	Label, UL
1403	1				951091102	Label, UL
1406	1	1			282186102	Label, Fuse Caution
1407	1	1	1	1	257886101	Label, Caution
1408	1	1	1	1	293286101	Label
1410	1	1	1	1	250626506	Indicator, "Do not use as handle"
1413	1	1	1	1	951091104	Label, "Produced in Taiwan"
1414	1				951091105	Label, "Produced in Taiwan"
1416	1				281886101	Label, FTC
0932	1	1	1	1	56382540G	Eyelet
0933	1	1	1	1	392011501	Spring
1422	2	2	2	2	287311802	Spacer
1425	1	1	1	1	288611802	Spacer
0510	1	1	1	1	391805301	Cover
1502	1				392085101	Instructions, Set
1503	1	1	1	1	392085131	Instructions, Set
8436	1	1	1	1	392085605	Schematic Diagram
1513	1	1	1	1	281885108	Instructions, Accessories
1514	1				287185104	Instructions, Accessories
1515	1	1	1	1	287685103	Instructions, "Important"
1516	1				388985132	Instructions, Leaflet
1517	1				392085129	Instructions, Accessories
1518	1				287185105	Instructions, Accessories
1520	1				390685402	Guarantee Card
1521	1				963000015	Guarantee Card
1522	1				963000017	Guarantee Card
1523	1				287681301	Envelope
1527	1	1	1	1	956000007	Hang Tag
					(Package)	
1602	1	1	1	1	392080101	Packing Case, Inner
1603	1	1	1	1	392080102	Packing Case, Outer
1604	1				392080103	Packing Case, Inner
1605	1				392080104	Packing Case, Outer
1606	2	2	2	2	390680301	Partitioner
1636	1	1	1	1	951091104	Label, "Produced in Taiwan"
1608	2	2	2	2	287180701	Reinforcing
1609	1				287180702	Reinforcing
1610	1				951091105	Label
1611	1	1	1	1	901453535	Polyethylene Bag, Set
1612	1	1	1	1	901183001	Polyethylen Bag, Accessories
1613	1	1	1	1	901302501	Polyethylen Bag, Printed Matter
1615	1	1	1	1	273182101	Silica Gel
1616	1	1			102980401	Sleeve
1617	1				286480401	Sleeve
1618	1	1	1	1	281905601	Buffer
1619	1				956000004	Hang Tag
1621	4				952281501	Serial No. Card
1622	4				952301512	Serial No. Card
1623	4				952301511	Serial No. Card
1624	4				952301513	Serial No. Card
1626	1				287186101	Label
8536	2				951090102	Label
1631	1	1	1	1	ZA0200008	Ext. Antenna, FM



SUPERSCOPE INC. · 20525, NORDHOFF STREET, CHATSWORTH, CALIFORNIA 91311 · U.S.A.