

THORDARSON QUALITY AMPLIFIERS

C O M P L E T E L Y W I R E D

Built with nationally known parts stocked by your Jobber

Perfect tonal reproduction and unflinching performance are achieved with Thordarson "Quality" amplifiers. Every precise engineering effort has been exerted in the development and production of these amplifiers to insure this "Quality".

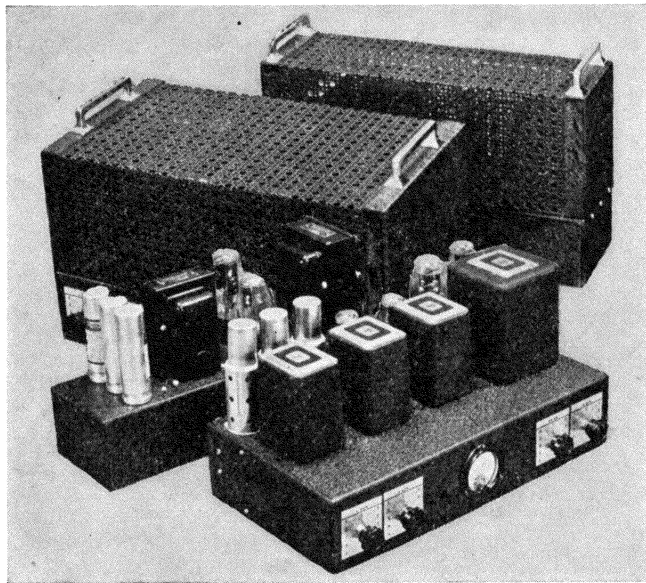
Only standard, well known parts stocked by jobbers and dealers everywhere have been used. This fact is of great

- Tru-Fidelity - 2A3
- 60 WATT - 6L6
- 6 WATT - 6F6
- 18 WATT - 6F6
- 30 WATT - 2A3

importance to all amplifier builders and users. Replacement parts for Thordarson amplifiers are easy to get regardless of where the amplifier is located. You don't have to waste valuable time waiting for new parts from the factory. Study the features and characteristics of these amplifiers and know why every Thordarson unit is the quality favorite in its class.



Tru-Fidelity 2A3 Amplifier—10 WATT



True linear frequency response-distortionless audio power. Every provision for perfect audio reproduction making Tru-Fidelity a superior unit has been incorporated in this design.

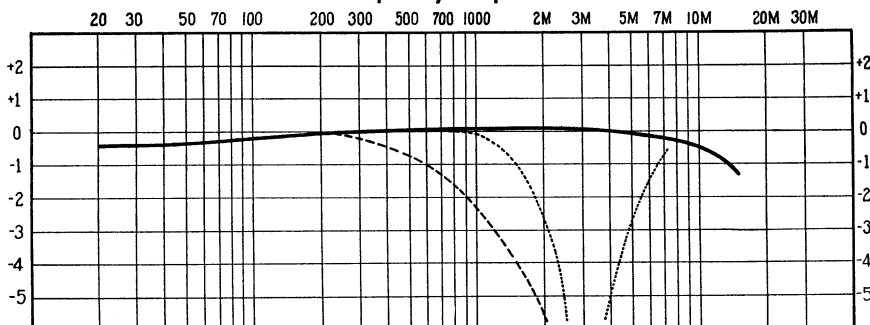
2A3 tubes and conservative 10 Watt output rating were pre-determined as being most consistent with pure, clear sound reproduction.

Output tube differences can be accurately compensated for by means of an individual bias adjustment. A plate milliammeter arranged with a switch enables the plate current of either tube to be read separately.

The amplifier chassis is provided with knockouts for additional tube sockets and controls to accommodate practically any type of pre-amplifier and mixer system which may be desired.

This Tru-Fidelity amplifier is everything the name implies. Every feature of the unit embodies all the high fidelity characteristics known today. Dependable, quality performance fits the unit for work in all fields,—broadcasting, recording, and public address.

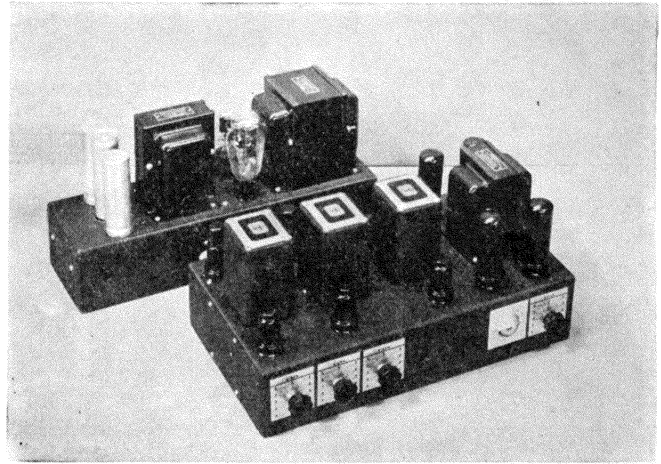
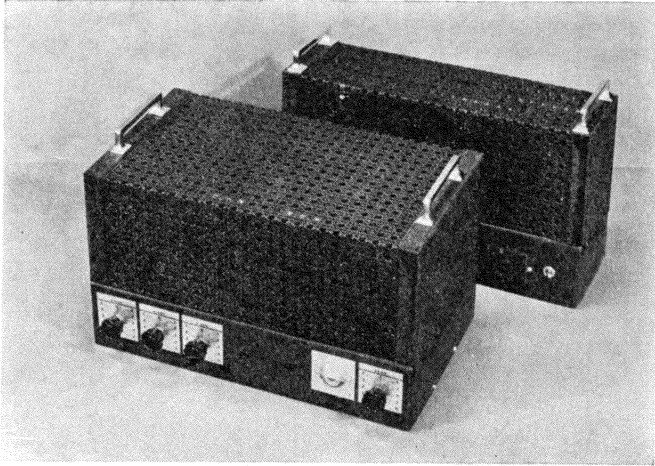
Db. vs Frequency-Response Curve



— Response of Amplifier without Tone Control.
 - - - - - Response of Amplifier with Maximum Tone Control Action using Tuned Circuit Tone Control as in Circuit Diagram (C-3 = .006 Mfd., CH-1 = T-8115, R-5 = 50,000 Ohm Potentiometer).
 - · - · - Response of Amplifier with Simple Series Tone Control Circuit using Condenser and Resistor (C-3 = .025 Mfd., R-5 = 50,000 Ohm Potentiometer).

PUSH-PULL PARALLEL

Full 60 WATTS



Full 60 Watts output. Brilliant, clear tone reproduction from a high power amplifier that is quality constructed. Thordarson engineers have again scored a success with a design that uses four of the new 6L6 beam power tubes in push-pull parallel resulting in greater gain . . . improved frequency response . . . minimum wave distortion . . . simple driver requirements . . . longer tube life.

Technical Data

Power Output 60 watts or +40 db referred to a zero db level of 6 milliwatts.

Gain—Basic Amplifier Circuit.

95.0 db from 100,000 ohm input.

—Basic amplifier with 4 input channels, electronic mixed.

122.5 db from a crystal microphone at 100,000 ohms.

87.3 db from a crystal pickup at 100,000 ohms.

86.5 db from line input.

Hum Level— 4.7 db or 44.7 db down from rated output or 3.333 milliwatts.

Over-all Frequency Response—See curve below.

Tubes—Basic circuit: 1 6C5 triode, 2 6C5 push-pull triodes, 4 6L6 push-pull parallel output tetrodes, 80 and 83 rectifiers. Amplifier with 4 channel electronic mixed inputs: 2 6F5 triodes, 3 6C5 parallel mixer triodes, 2 6C5 push-pull triodes, 4 6L6 push-pull parallel output tetrodes, 80 and 83 rectifiers.

Line input impedances 500, 333, 250, 200, 125, 50 ohms.

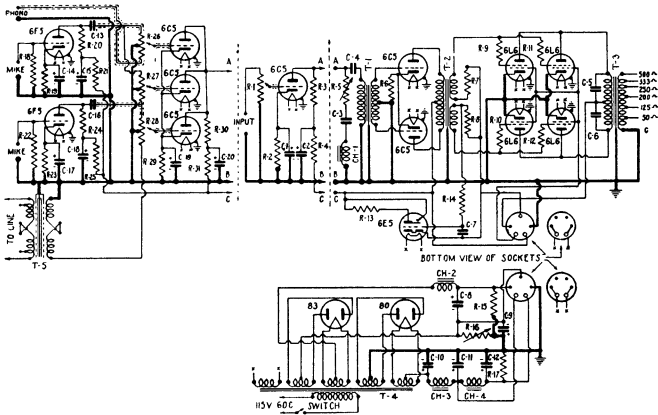
Output Impedances—500, 333, 250, 200, 125, 50 ohms.

Two-Unit Base—Amplifier chassis size 9" deep, 16 1/2" wide, and 3 1/2" high, with metal shield 11" high.

Power supply chassis size 5" deep, 16 1/2" wide, and 3 1/2" high, with metal shield, 11" high.

Amplifier and power supply bases furnished with sockets for basic circuit tubes (knockouts are provided for the addition of pre-amplifier and mixer circuit tubes). Resistor strips and sub-assembly panels provided to accommodate the maximum parts used.

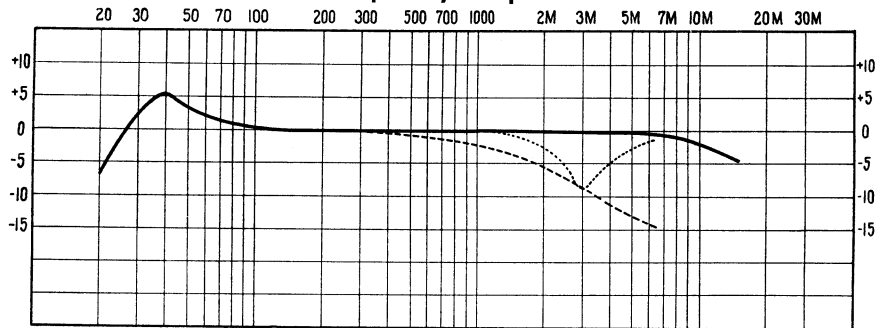
Terminal strips for input and output connections are provided, also knockout holes for the addition of input and output connector receptacles.



Mixing and fading can be accomplished to satisfy almost any requirement.

Its attractive appearance is as striking as its outstanding performance. Bright chrome dial plates contrast with the black wrinkle finish of the foundation chassis and compact construction carries out the neat character of the amplifier design.

Db. vs. Frequency-Response Curve



Response of Amplifier without Tone Control Action.

Response of Amplifier with Maximum Tone Control Action using Tuned Circuit Tone Control as in Circuit Diagram (C-3=0.006 Mfd., CH-1=T-8115, R-5=50,000 Ohm Potentiometer).

Response of Amplifier with Simple Series Tone Control Circuit of Condenser and Resistor (C-3=0.025 Mfd., R-5=50,000 Ohm Potentiometer).

EL 6L6 AMPLIFIER



AUDIO POWER

COMPLETE PARTS LIST

THORDARSON FOUNDATION UNIT

- 1 Amplifier chassis with 9 sockets mounted.
 - 1 Amplifier chassis bottom plate.
 - 2 Sub-Assembly panels.
 - 1 Input shield.
 - 2 Terminal strips (6 terminals).
 - 18 Resistor mounting strips.
 - 1 Power supply chassis with 4 sockets mounted.
 - 1 Power supply chassis bottom plate.
 - 1 Fuse cover plate.
 - 1 Line cord rubber grommet.
- Screws.
Complete diagrams and assembly instructions.
All above items in one T-10K60 unit.....List \$12.00

BASIC CIRCUIT PARTS LIST

THORDARSON TRANSFORMERS and CHOKES

Diagram Number	Description	List
T-1	T-9004 Tru-Fidelity Transformer, or T-5741 Interstage Transformer	\$11.50 / 3.50
T-2	T-9005 Tru-Fidelity Transformer, or T-5870 Interstage Transformer	12.50 / 3.75
T-3	T-8968 Output Transformer	6.00
T-4	T-8928 Power Transformer	12.00
CH-1	T-8115 Choke	2.50
CH-2	T-7551 Choke	6.00
CH-3	T-4707 Choke	1.75
CH-4	T-1892 Choke	1.75

Diagram Number	Capacity in Mfd.	Working Voltage	Type	List
C-1*	25	25	Electrolytic (Aerovox #PB25 or equivalent)	\$0.65
C-2*	8	450	Electrolytic (Aerovox #PB55 or equivalent)	.95
C-3	.006	1000	Mica (Aerovox #1450 or equivalent)	.55
C-4 } C-7 }	.1	400	Paper (Aerovox #484 or equivalent @ .20)	.40
C-5 } C-6 }	.005	1000	Mica (Aerovox #1450 or equivalent @ .45)	.90
C-8	8	500	Wet Electrolytic (Aerovox #WG5 or equivalent)	.95
C-9	25	50	Electrolytic (Aerovox #PB50 or equivalent)	.80
C-10	8	450	Electrolytic (Aerovox #G5 or equivalent)	1.50
C-11 } C-12 }	8-8	450	Electrolytic (Aerovox #2G5 or equivalent)	1.60

RESISTORS

Diagram Number	Ohms	Watts	Type	List
R-1*	500,000		Volume Control (IRC #13-133 or equivalent)	\$1.00
R-2*	2,250	1	Wire-wound (Ohmite Wirewatt or equivalent)	.25
R-3*	50,000	1	Metalized (IRC #BT-1 or equivalent)	.20
R-4* } R-7 } R-8 }	20,000	1	Wire-wound (Ohmite Wirewatt or equivalent) @ .25	.75
R-5	50,000		Tone-Control (IRC #13-123 or equivalent)	1.00
R-6	500	1	Wire-wound (Ohmite Wirewatt or equivalent)	.25
R-9 } R-10 } R-11 } R-12 }	200	1	Wire-wound (Ohmite Wirewatt or equivalent) @ .25	1.00
R-13 } R-14 }	1 megohm	1	Metalized (IRC #BT-1 or equivalent) @ .20	.40
R-15	25,000	50	Wire-wound (Ohmite #O418 or equivalent)	1.25
R-16	200	75	Semi-variable Wire-wound (Ohmite #0774-B or equivalent)	1.75
R-17	10,000	50	Wire-wound (Ohmite #O414 or equivalent)	1.25

TUBES

Type	Quantity	Price
3 Type 6C5	@ \$1.25 each	\$3.75
4 Type 6L6	@ 2.25 each	9.00
1 Type 6E5	@ 1.50 each	1.50
1 Type 83	@ 1.10 each	1.10
1 Type 80	@ .70 each	.70

BASIC CIRCUIT MISCELLANEOUS PARTS

Quantity	Description	List
1	6 Contact 6E5 Socket (Amphenol #RS6 replacement socket or equivalent)	\$0.12
3	7 Contact speaker sockets (if required) (Amphenol or equivalent) @ .11 each	.33
3	7 Prong male speaker plugs (if required) (Amphenol or equivalent) @ .25 each	.75
2	5 Prong male plugs (Amphenol or equivalent) @ .25 each	.50
2	6 Prong male plugs (Amphenol or equivalent) @ .25 each	.50
1	6E5 Escutcheon plate (Crowe #435 or equivalent)	.75
1*	Volume control plate (Crowe #436 or equivalent)	.30
1	Tone control plate (Crowe #439 or equivalent)	.30
2	Knobs (Crowe #591 or equivalent) @ .40 each	.80
1	Single-pole single-throw toggle switch	.30
1	Fuse mounting (Littlefuse #1126 or equivalent)	.20
1	3 Ampere fuse (Littlefuse #1043 or equivalent)	.08
2	Extruded insulating washers for C-8	.05
1	Ground lug for C-8	.05
1	A.C. Line cord and plug	.35
6 ft.	Connecting cable (6 wire)	.70
2	5/8" Bushings 3/8" hole @ .05 each	.10
2	3/8" Bushings 1/4" hole	.05
1	1/4" Bushings 1/8" hole	.05
5/2 doz.	6-32x1/2" cadmium plated screws, nuts, and lockwashers	.55
2 doz.	8-32x1/2" cadmium plated screws, nuts, and lockwashers	.20
1 ft.	shielded wire	.02
	Hookup wire	.20

* These parts are not used when the pre-amplifier is incorporated with the basic amplifier since parts listed under "Pre-Amplifier Mixer and Fader Parts" will replace them.

PRE-AMPLIFIER MIXER AND FADER PARTS LIST

Diagram Number	Description	List
T-5	T-9000 Tru-Fidelity Transformer	\$14.50

Diagram Number	Capacity in Mfd.	Working Voltage	Type	List
C-13 } C-16 }	.1	400	Paper (Aerovox #484 or equivalent) @ .20	\$0.40
C-14 } C-17 } C-19 }	25	25	Electrolytic (Aerovox #PB25 or equivalent) @ .65	1.95
C-15 } C-18 } C-20 }	8	450	Electrolytic (Aerovox #PB55 or equivalent) @ .95	2.85

RESISTORS

Diagram Number	Ohms	Watts	Type	List
R-18 } R-22 }	5 megohm	1/2	Metalized (IRC #BT-1/2 or equivalent) @ .17	\$0.34
R-19 } R-23 }	3000	1	Wire-wound (Ohmite Wirewatt or equivalent) @ .25	.50
R-20 } R-24 }	1/4 megohm	1	Metalized (IRC #BT-1 or equivalent) @ .20	.40
R-21 } R-25 }	20,000	1	Wire-wound (Ohmite Wirewatt or equivalent) @ .25	.50
R-26 } R-27 } R-28 }	1 megohm		Fader control (IRC #VC-539 or equivalent) @ 1.00	3.00
R-29	800	1	Wire-wound (Ohmite Wirewatt or equivalent)	.25
R-30 } R-31 }	20,000	10	Wire-wound (Ohmite "Brown Devil" or equivalent) @ .40	.80

TUBES

Type	Quantity	Price
2 Type 6F5	@ \$1.25 each	\$2.50
2 Type 6C5	@ 1.25 each	2.50

PRE-AMPLIFIER, MIXER AND FADER MISCELLANEOUS PARTS

Quantity	Description	List
4	Shielded input sockets (Amphenol #PC-3F or equivalent) @ .50 each	\$2.00
4	Shielded input plugs (Amphenol #MC-3M or equivalent) @ \$1.00 each	4.00
2	8 Contact octal sockets (Amphenol 58 or equivalent) @ .14 each	.28
2	8 Contact octal sockets (Amphenol RS8 replacement socket) @ .15 each	.30
3	Fader control plates (Crowe #437 or equivalent) @ .30 each	.90
2	Knobs (Crowe #591 or equivalent) @ .40 each	.80
2	Metal tube grid caps @ .02 each	.04
2	Grid cap shields @ .08 each	.16
1/2 doz.	6-32x1/2" cadmium plated screws, nuts, and lockwashers	.05
2 doz.	6-32x1/2" cadmium plated screws, nuts, and lockwashers	.10
4	Rubber grommets (for 1/8" hole)	.03
1/2 doz.	Solder lugs	.02
5 ft.	Shielded wire	.10

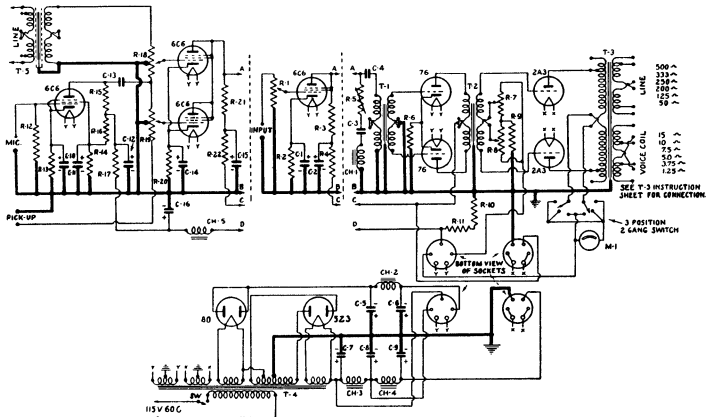
Complete (Factory wired and tested, less tubes), T-10W61 Amp. \$155.00

ACCESSORIES

Description	List
Amplifier metal screen cover (less handles), T-10K20	\$5.50
Power supply metal screen cover (less handles), T-10K21	4.75
Chromium plated handles, T-10K50	List, Per Pair 1.90

(1 Pair required for each cover.)

NOTE: The brands and types specified in the parts list were used in the original laboratory models. Parts of equivalent quality may be substituted except where physical limitations prohibit.



Technical Data

Power Output 10 watts or -32.2 db referred to zero db level of 6 milliwatts.

Gain—Basic Amplifier Circuit.
77.1 db from 100,000 ohm input.
—Basic Amplifier with Pre-Amplifier and Mixer.
110 db from a crystal microphone input.
71.1 db from a crystal pickup input.
69.8 db from line input.

Hum Level— -5.5 db or 37.5 db down from max. output or 1.6 milliwatts.

Over-all Frequency Response— $\pm 1\frac{1}{2}$ db 20 to 15,000 cycles.

Tubes—Basic Circuit.
1 6C6 triode, 2 76's push-pull, 2 2A3's output, 5Z3 and 80 rectifiers.
—Basic Circuit with Pre-Amplifier.
1 6C6 pentode; 2 6C6 parallel triodes; 2 76's push-pull; 2 2A3's output; 5Z3 and 80 rectifiers.

Line Input Impedances 500, 333, 250, 200, 125, 50 ohms.

Output Impedance—Series or parallel combinations of output transformer secondary windings to obtain any of the following values:

Voice Coil		Line	
15.0 ohms	5.0 ohms	500 ohms	200 ohms
10.0 ohms	3.75 ohms	333 ohms	125 ohms
7.5 ohms	1.25 ohms	250 ohms	50 ohms

Two-Unit Base—Amplifier chassis size 9" deep, 16 $\frac{1}{2}$ " wide, and 3 $\frac{1}{2}$ " high, with metal shield 11" high.

Power supply chassis size 5" deep, 16 $\frac{1}{2}$ " wide, and 3 $\frac{1}{2}$ " high, with metal shield 11" high.

R-13	2,250	1	Wire-wound (Ohmite Wirewatt or equivalent)	.25
R-14	20,000	1	Wire-wound (Ohmite Wirewatt or equivalent)	.25
R-15	250,000	1	Metalized (IRC #BT-1 or equivalent)	.20
R-16	100,000	1	Metalized (IRC #BT-1 or equivalent)	.20
R-17	50,000	1	Metalized (IRC #BT-1 or equivalent)	.20
R-18	1 megohm	1	Fader controls (IRC #VC539 or equivalent)	1.00
R-19				1.00
R-20	1,100	1	Wire-wound (Ohmite Wirewatt or equivalent)	.25
R-21	20,000	10	Wire-wound (Ohmite Wirewatt or equivalent) @ .40	.80
R-22				

TUBES

3	Type 6C6 @ 1.20 each	3.60
---	----------------------	------

Pre-Amplifier, Mixer and Fader Miscellaneous Parts

3	Shielded input sockets (Amphenol PC-3F or equivalent) @ .50 each	\$1.50
3	Shielded input plugs (Amphenol MC-3M or equivalent) @ \$1.00 each	3.00
1	6C6 6 contact socket (Amphenol Replacement Type RS-6 or equivalent)	.12
1	6C6 6 contact socket (Amphenol S-6 or equivalent)	.11
2	Fader control plates (Crowe #437 or equivalent) @ .30 each	.60
1	Knob (Crowe #591 or equivalent)	.40
2	Grid caps @ .02 each	.04
2	Tube shields @ .15 each	.30
1	Tube shield base (Amphenol TSBI or equivalent)	.05
1	4" Extension shaft (Yaxley #RS-242 or equivalent)	.30
1	Panel bearing for extension shaft (Bud #532 or equivalent)	.20
12	6-32 1/2" cadmium plated screws, nuts, and lockwashers	.10
2	6-32 1" cadmium plated screws and nuts.	.05
2	Rubber grommets for 3/8" hole	.03
1	ft. Shielded wire	.02
1	ft. High capacity rubber covered shielded wire	.05
2	ft. Low capacity rubber covered shielded wire	.05
Complete (Factory wired and tested, less tubes) T-10W11		\$160.00

ACCESSORIES

Amplifier Cover T-10K20	\$5.50
Power Supply Cover, T-10K21	4.75
Chrome Plated Handles, T-10K50, Per Pair	1.90
(1 pair required for each cover)	

NOTE: The brands and types specified in the parts list were used in the original laboratory models. Parts of equivalent quality may be substituted except where physical limitations prohibit.

THORARDSON FOUNDATION UNIT

- 1 Amplifier chassis with 7 sockets mounted.
 - 1 Amplifier chassis bottom plate.
 - 1 Sub-assembly panel.
 - 1 Input shield.
 - 2 Terminal strips (6 terminals).
 - 8 Resistor mounting strips.
 - 1 Power supply chassis with 4 sockets mounted.
 - 1 Power supply chassis bottom plate.
 - 1 Line cord rubber grommet.
 - 1 Tube shield base.
- Screws.
Complete diagrams and assembly instructions.
All above items in one T-10K10 Unit.....List \$10.00

Basic Circuit Parts List

The following THORARDSON items may be purchased individually:

Diagram Number	Description	List
T-1	T-9004 Tru-Fidelity Interstage Transformer	\$11.50
T-2	T-9005 Tru-Fidelity Interstage Transformer	12.50
T-3	T-9013 Tru-Fidelity Output Transformer	20.00
T-4	T-8785 Power Transformer	6.50
CH-1	T-8115 Choke	2.50
CH-2, CH-4, 2	T-1892 Chokes @ 1.75	3.50
CH-3	T-7429 Choke	4.75

CONDENSERS

Diagram Number	Capacity in Mfds.	Working Voltage	Type	List
C-1*	25	25	Electrolytic (Cornell Dubilier #EH-2250 or equivalent)	\$0.65
C-2*	8	450	Electrolytic (Cornell Dubilier #RHM-9080 or equivalent)	.95
C-3	.006	1000	Mica (Cornell Dubilier #4-6D6 or equivalent)	.65
C-4	.5	400	Paper (Cornell Dubilier #DT-4P5 or equivalent)	.50
C-5 } C-6 }	8	200	Electrolytic (Cornell Dubilier #EH-7080 or equivalent) @ .80	1.60
C-7 } C-8 } C-9 }	8	450	Electrolytic (Cornell Dubilier #EB-9080 or equivalent) @ 1.05	3.15

RESISTORS

Diagram Number	Ohms	Watts	Type	List
R-1	500,000	1	Volume Control (IRC #13-133 or equivalent)	1.00
R-2*	2,250	1	Wire-wound (Ohmite Wirewatt or equivalent)	.25
R-3*	50,000	1	Metalized (IRC #BT-1 or equivalent)	.20
R-4*	20,000	1	Wire-wound (Ohmite Wirewatt or equivalent)	.25
R-5	50,000	1	Tone Control (IRC #13-123 or equivalent)	1.00
R-6	1,250	1	Wire-wound (Ohmite Wirewatt or equivalent)	.25
R-7 } R-8 }	3,000	1	Wire-wound Potentiometer (Yaxley #C3MP or equivalent) @ 1.00.	2.00
R-9	3,500	10	Wire-wound (Ohmite Brown Devil or equivalent)	.40
R-10	2,500	50	Wire-wound Ohmite #0408 or equivalent	1.25
R-11				1.25

TUBES

1*	Type 6C6 @ \$1.20 each	\$1.20
2	Type 76 @ .80 each	1.60

2	Type 2A3 @ 2.25 each	4.50
1	Type 5Z3 @ 1.00 each	1.00
1	Type 80 @ .70 each	.70

Basic Circuit Miscellaneous Parts List

1	7 Contact speaker socket (if required) (Amphenol or equivalent)	\$0.11
1	6 Contact speaker socket (if required) (Amphenol or equivalent)	.11
1	7 Prong speaker plug (if required) (Amphenol or equivalent)	.25
1	6 Prong speaker plug (if required) (Amphenol or equivalent)	.25
2	5 Prong male plugs (Amphenol or equivalent) .25 each	.50
2	6 Prong male plugs (Amphenol or equivalent) .25 each	.50
1	Tube shield	.15
1	Grid Cap	.02
1*	Volume control plate (Crowe #436 or equivalent)	.30
1	Tone control plate (Crowe #439 or equivalent)	.30
1	Switch escutcheon plate (Crowe #438 or equivalent)	.30
3	Knobs (Crowe #591 or equivalent) each	.40
1	2 1/8" O-150 M.A. D.C. meter (Triplett #223 or equivalent)	1.20
1	Single-pole single-throw toggle switch	.30
1	2 Gang 3 position switch (Yaxley #1226 or equivalent)	1.60
1	4" Extension shaft (Yaxley #RS-242 or equivalent)	.30
1	Panel bearing for extension shaft (Bud #532 or equivalent)	.20
2	Brackets (Yaxley #RB-248 or equivalent) .20 each	.40
6	Ft. Connecting cable (6 wire)	.70
36	6-32 1/2" cadmium plated screws, nuts, and lockwashers	.30
21	8-32 1/2" cadmium plated screws, nuts, and lockwashers	.10
1	A.C. line cord and plug	.35
1*	Ft. Shielded wire	.02
1	Hookup Wire	.20

* These parts should be omitted when the pre-amplifier is built up with the basic amplifier, as parts listed under "Pre-Amplifier, Mixer and Fader Parts" will replace them.

Pre-Amplifier, Mixer and Fader Parts List THORARDSON TRANSFORMERS AND CHOKES

Diagram Number	Description	List
T-5	T-9000 Tru-Fidelity Transformer	\$14.50
CH-5	T-7430 Choke	1.50

CONDENSERS

Diagram Number	Capacity in Mfds.	Working Voltage	Type	List
C-10 }	25	25	Electrolytic (Cornell Dubilier #EH-2250 or equivalent) @ .65	\$1.30
C-14 }				
C-11	8	200	Electrolytic (Cornell Dubilier #EH-7080 or equivalent)	.80
C-12 } C-15 } C-16 }	8	450	Electrolytic (Cornell Dubilier #RHM-9080 or equivalent) @ .95	2.85
C-13	.1	400	Paper (Cornell Dubilier #DT-4P1 or equivalent)	.30

RESISTORS

Diagram Number	Ohms	Watts	Type	List
R-12	5 megohm	1/2	Metalized (IRC #BT-1/2 or equivalent)	\$0.17



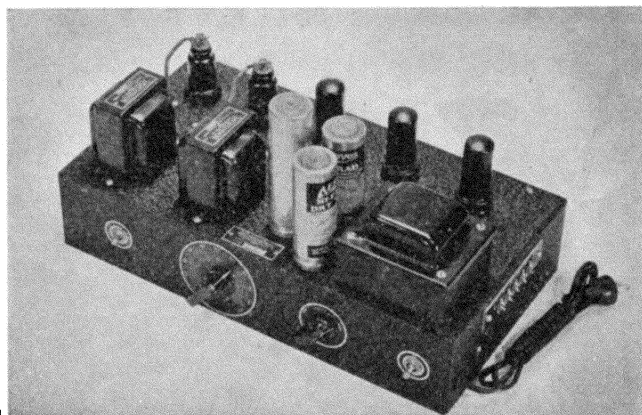
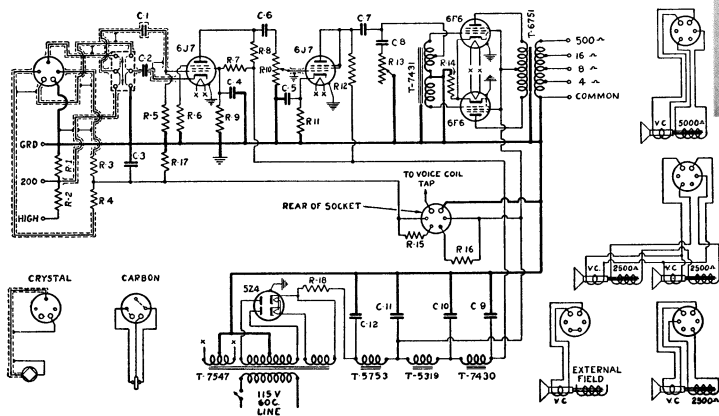
6 WATT High Gain Amplifier



Brilliant tone quality rarely found in sound amplifiers marks this unit as an ideal instrument where high quality, low power is required. A few of the many types of auditoriums to which this amplifier is ideally adapted are churches, schools, gymnasiums, swimming pools, ice rinks, dining rooms, clubs. Traveling orchestras will find this unit to be a great advantage for featuring soloists.

Four input circuits accommodate either a crystal or double button carbon microphone, high impedance pickup and 200 ohm pickup or line. A switch provides for operation from either microphone or phono. The power supply circuit furnishes 10 watts for speaker field excitation independent of the filter system. Either one 2,500 ohm field, one 5,000 ohm field or two 2,500 ohm fields can be used by properly connecting to the output speaker plug.

Uses tubes: 2-6J7, 2-6F6, 1-5Z4.



THORDARSON 6F6 (6 watt) Amplifier

PRICE LIST		List
T-7506-M Foundation Unit.....		\$ 4.50
Thordarson Transformers and Chokes		
T-7547 Power Transformer.....		\$ 3.75
T-6751 Output Transformer.....		3.50
T-7431 Input Transformer.....		3.50
T-7430 Filter Choke.....		1.50
T-5753 Filter Choke.....		2.00
T-5319 Filter Choke.....		1.35
Total Thordarson Parts.....		\$20.10
Other parts (approximate).....		\$21.17
Complete (Factory wired and tested, less tubes)		\$59.25
T-11W06-M.....		
Complete parts list is included in SD-220-B-M Instruction Sheet.....		25c



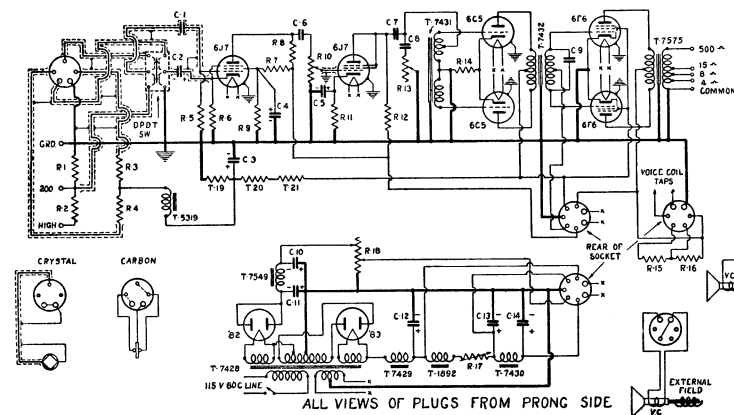
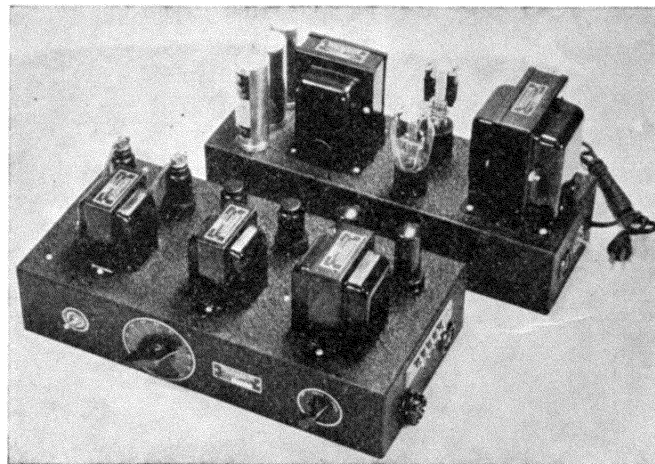
18 WATT High Gain Amplifier



TEN important features make this amplifier unquestionably the finest sound unit in its class.

- 1—Any type of microphone—crystal, ribbon, or carbon—may be used without changing the circuit!
- 2—Dynamic speaker field current—25 watts available for one 5000, or two 2500, or four 1250-ohm dynamic speakers!
- 3—Exceptional gain of 119.11 D. B. from a crystal microphone!
- 4—New input circuit—over-all gain compensated for any type of input circuit!
- 5—Low and high impedance input terminals for radio, phono-pickup, or line input!
- 6—Microphone current for double-button carbon unit!
- 7—Two unit base for rack-and-panel, portable, or shelf assembly.
- 8—Pre-amplifier is an integral part of the circuit.
- 9—Octal sockets accommodate either metal or glass tubes.
- 10—Amplifier section may be operated from six-volt battery supply by plugging in suitable genemotor power unit.

Uses tubes: 2-6J7, 2-6C5, 2-6F6 1-83, 1-82.



THORDARSON 6F6 (18 watt) Amplifier

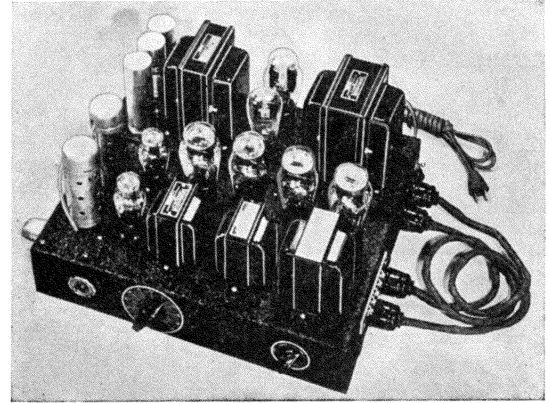
PARTS LIST		List
T-7518-M Foundation Unit.....		\$ 6.00
Thordarson Transformers and Chokes		
T-7428 Power Transformer.....		\$ 6.50
T-7429 Power Choke.....		4.75
T-7430 Filter Choke.....		1.50
T-7431 Input Transformer.....		3.50
T-7432 Push-Pull Input.....		3.75
T-1892 Choke.....		1.75
T-5319 Choke.....		1.35
T-7549 Choke.....		1.35
T-7575 Output Transformer.....		4.00
Total Thordarson Parts.....		\$34.45
Other parts (approximate).....		\$26.44
Complete (Factory wired and tested, less tubes),		\$80.90
T-11W18-M.....		
Complete parts list is included in SD-219-B-M Instruction Sheet.....		25c

Thordarson has designed and constructed this amplifier to supply the need for greater power and greater gain. A tone control compensates for the slightly rising frequency characteristic of microphones above 2,000 cycles. Response of this amplifier is regulated to give a richness and fullness to deep bass tones. Thus, the effective over-all response is practically uniform.

The Thordarson 30 Watt 2A3 amplifier is particularly suited for sound requirements at county fairs, carnivals, bazaars, basketball tournaments, and holiday publicity ballyhoo for merchants. Orchestras that play in large halls will find this unit to be an especially valuable asset.

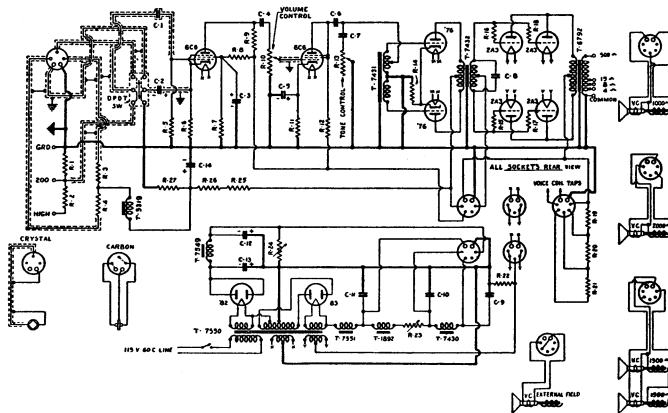
Brilliancy and beauty of tone makes this amplifier a favorite.

Uses tubes: 2—6C6, 2—76, 4—2A3, 1—83, 1—82.

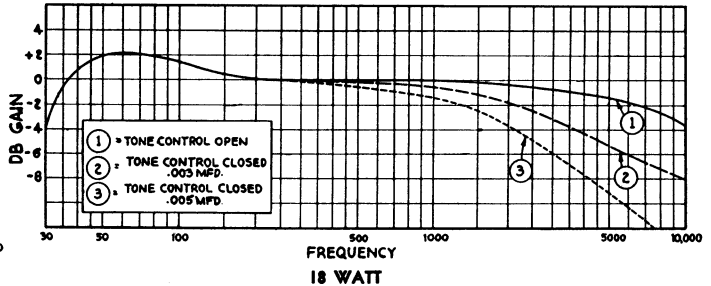
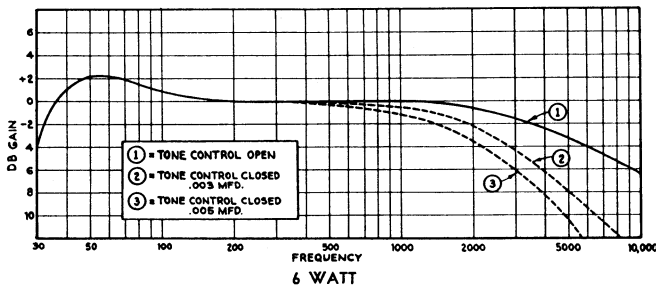


THORDARSON 2A3 (30 watt) Amplifier PRICE LIST

T-7530 Foundation Unit.....	\$ 8.00
Thordarson Transformers and Chokes	
T-7550 Power Transformer	\$ 8.00
T-7551 Filter Choke	6.00
T-1892 Filter Choke	1.75
T-7430 Filter Choke	1.50
T-5319 Choke	1.35
T-7549 Choke	1.35
T-7431 Tapped Input Imped.....	3.50
T-7432 Push-Pull Interstage	3.75
T-6792 Output Transformer	4.00
Total Thordarson Parts.....	
\$39.20	
Other parts (approximate).....	\$32.05
Complete (Factory wired and tested, less tubes), T-11W30	\$93.25
Complete parts list is included in SD-224-B Instruction Sheet.....	25c



FREQUENCY CURVES FOR 6 - 18 - 30 WATT High Gain Amplifiers

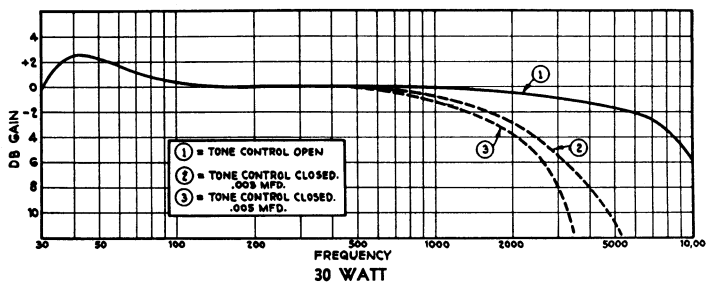


**COMPLETE
TRANSFORMER MANUAL
No. 340**

Contains
—Sound Amplifier Guide
—Transmitter Guide
—Radio Servicing Guide

Plus—Thordarson Catalogs and prices.

**Get your copy NOW
Price 50c**



**THORDARSON
SOUND AMPLIFIER GUIDE
No. 346-B**

Circuit diagrams, details and parts list for Amplifiers ranging up to 100 watts output—also, material on speaker placement, microphones—db table.

**Get your copy of this complete text and workbook today.
Price 15c**