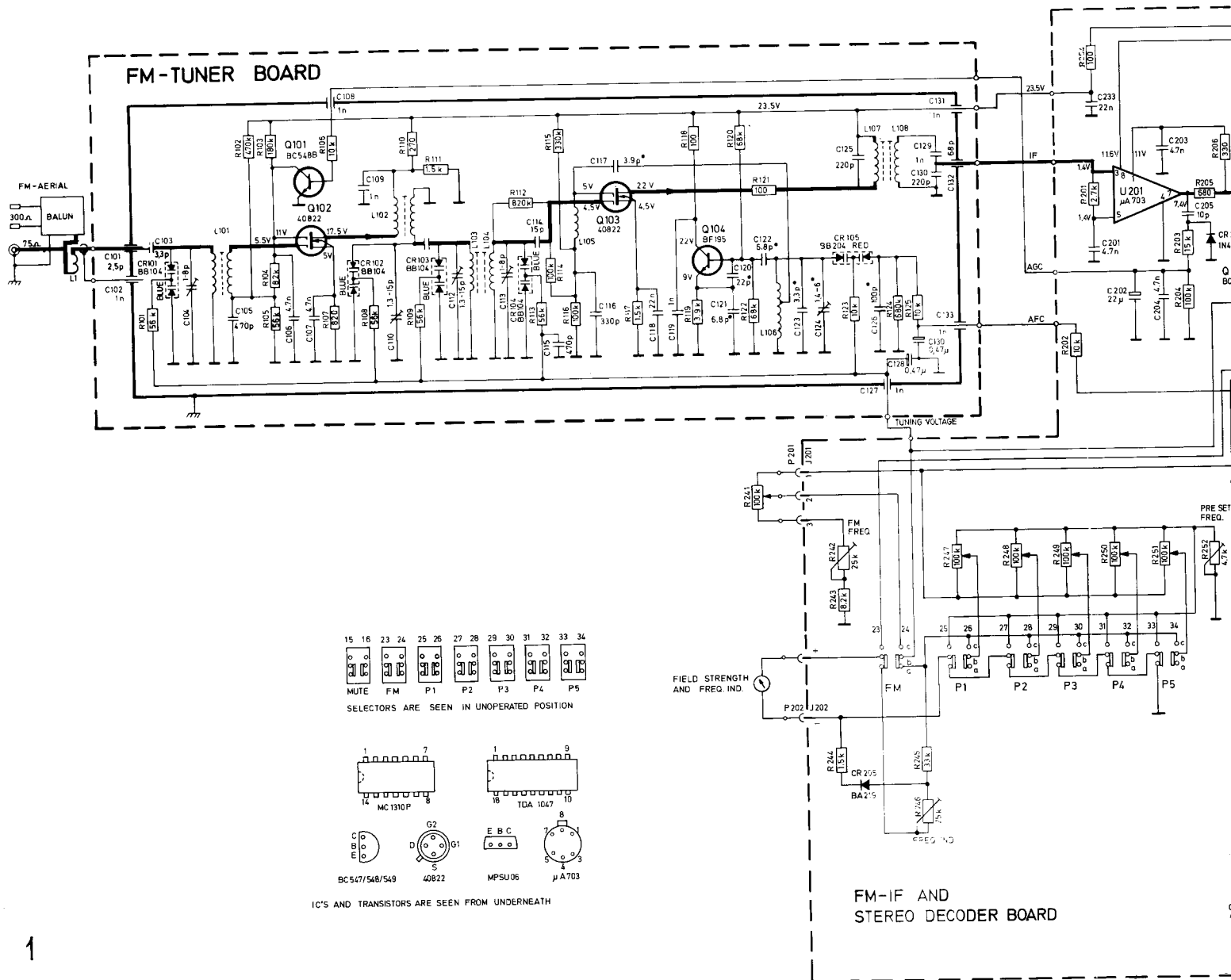
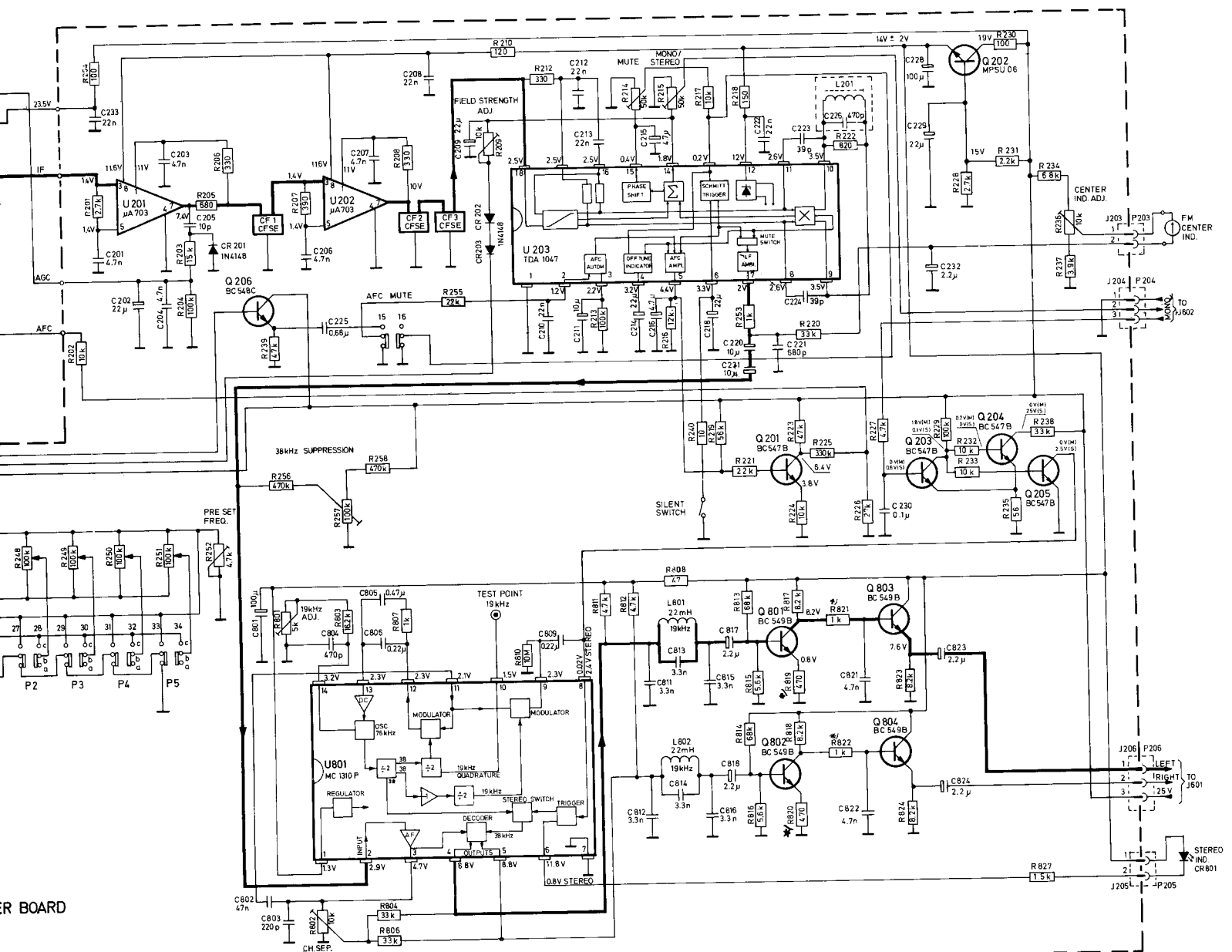


TANDBERG

TR2030

Circuit diagrams

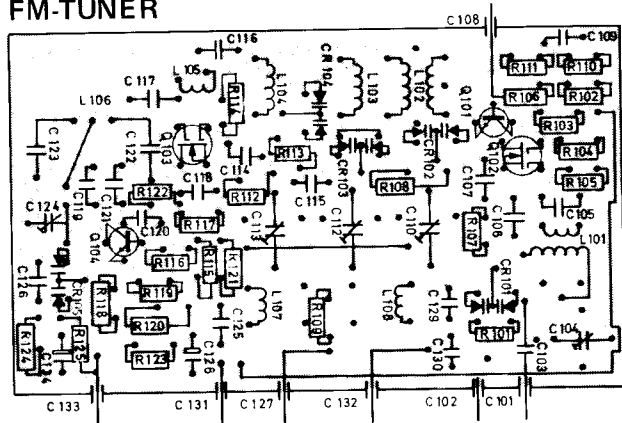




R819 AND R820 ARE 820 OHM
R821 AND R822 ARE 5.6 KOHM
IN US MODELS

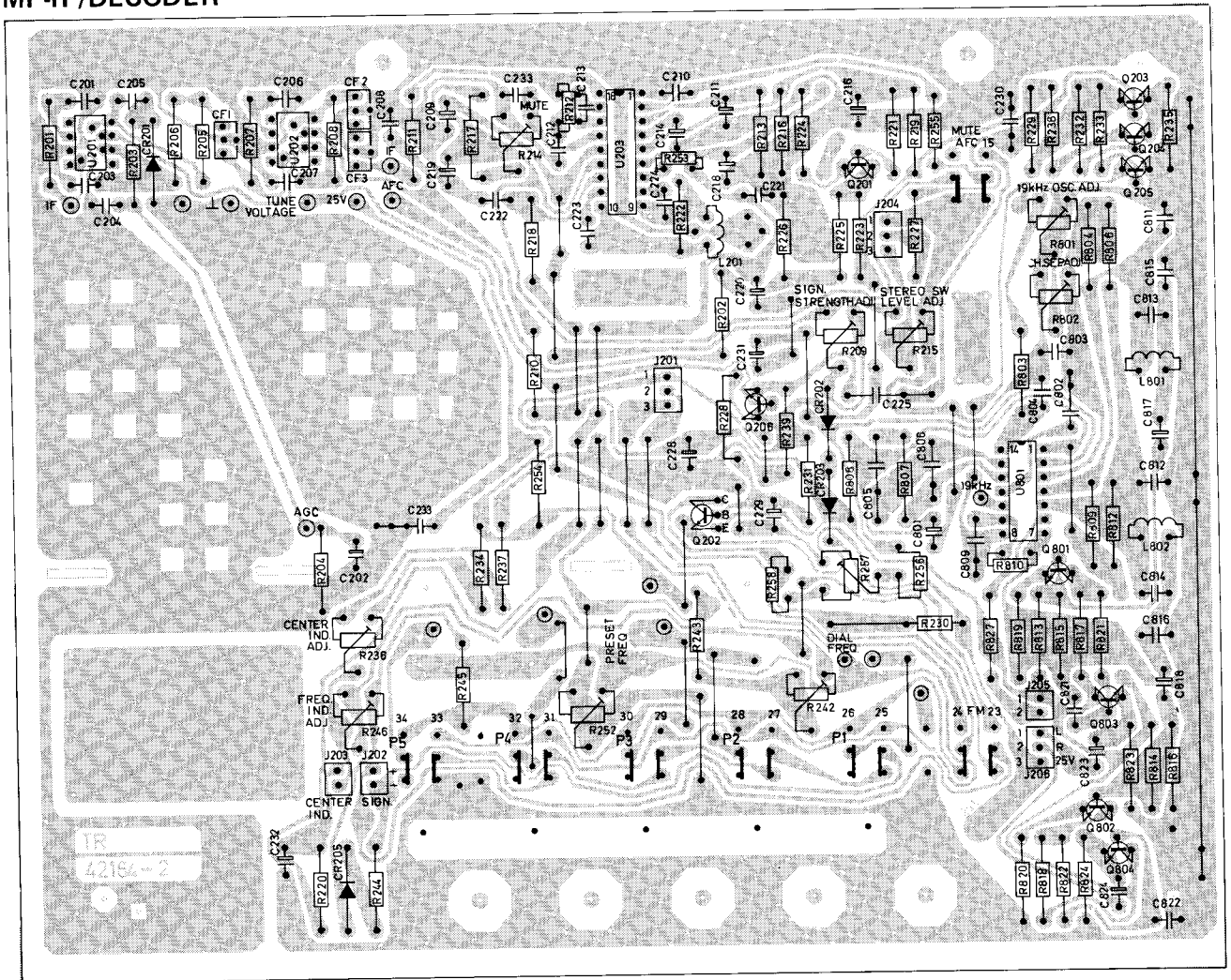
HF - SECTION NO. 42169

FM-TUNER



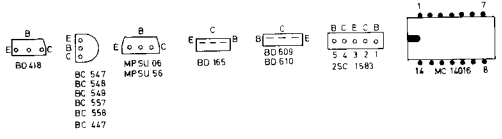
Seen from the solder side

MF-IF/DECODER



Seen from the solder side

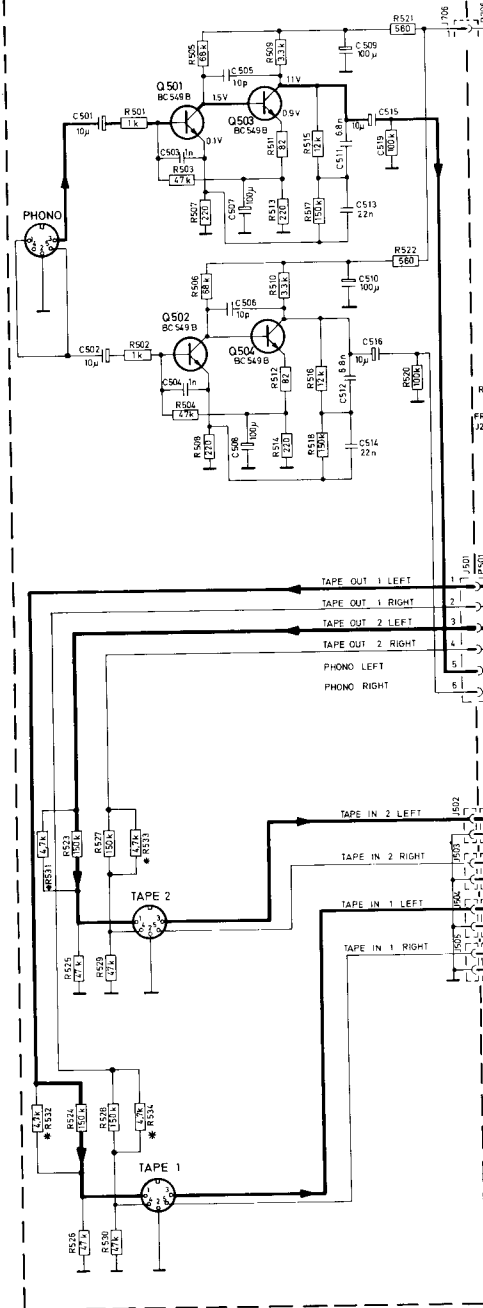




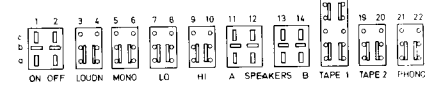
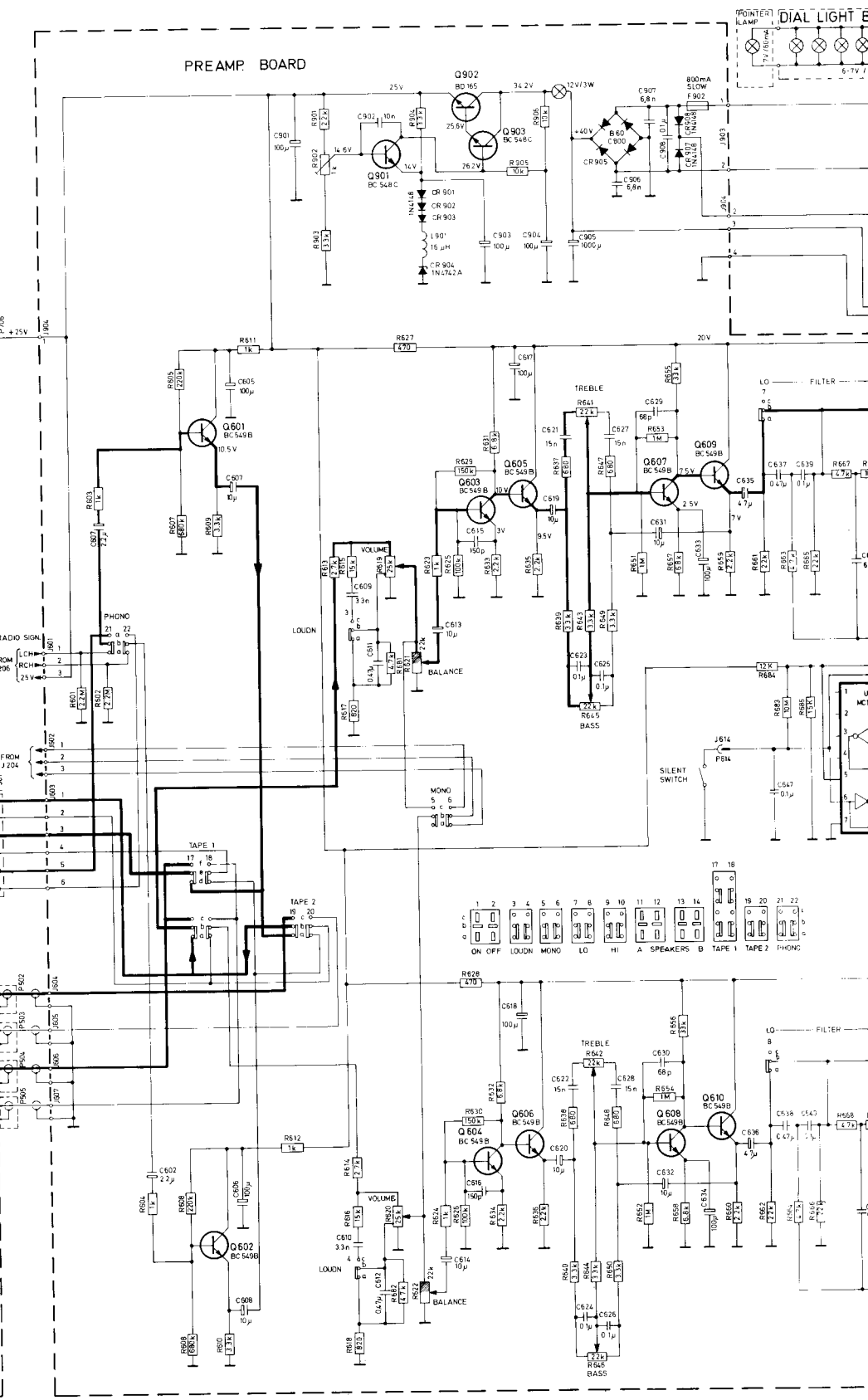
SEEN FROM UNDERMATH

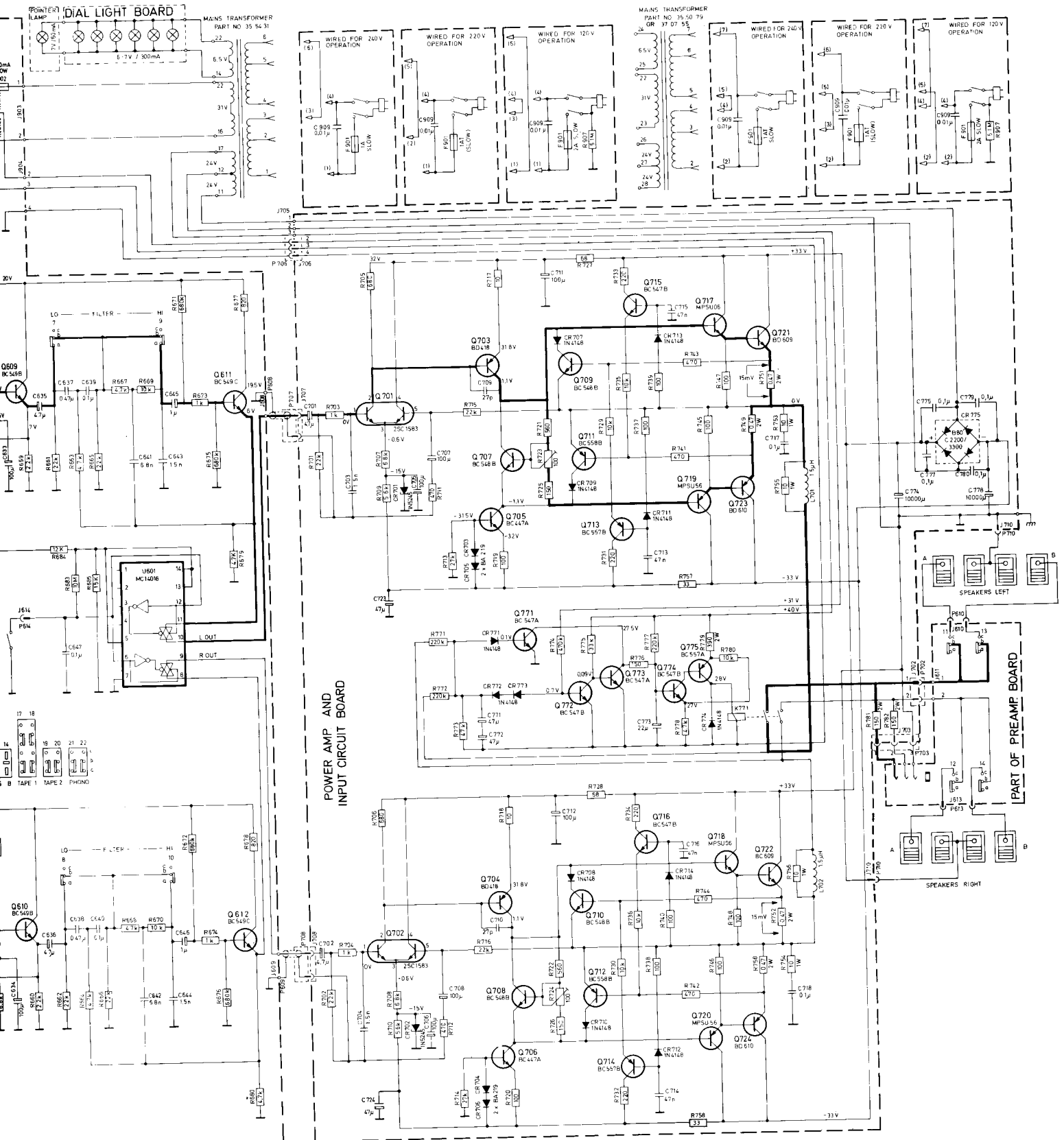
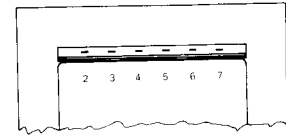
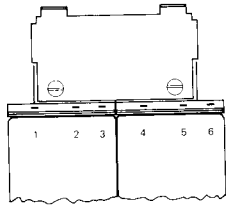
*R531
 *R532
 *R533
 *R534

POWER AMP AND INPUT CIRCUIT BOARD

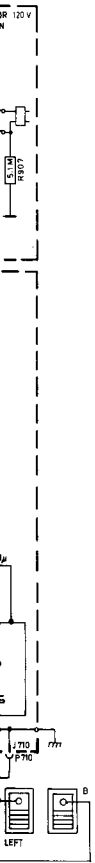


PREAMP BOARD



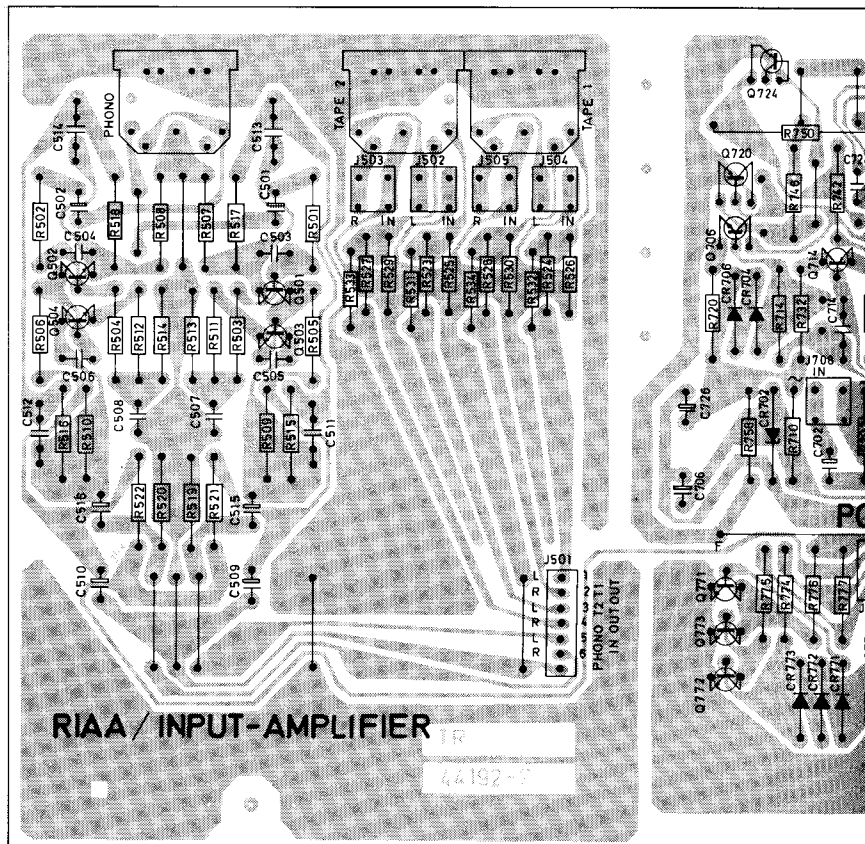


AUDIO FREQ. SECTION NO. 42283



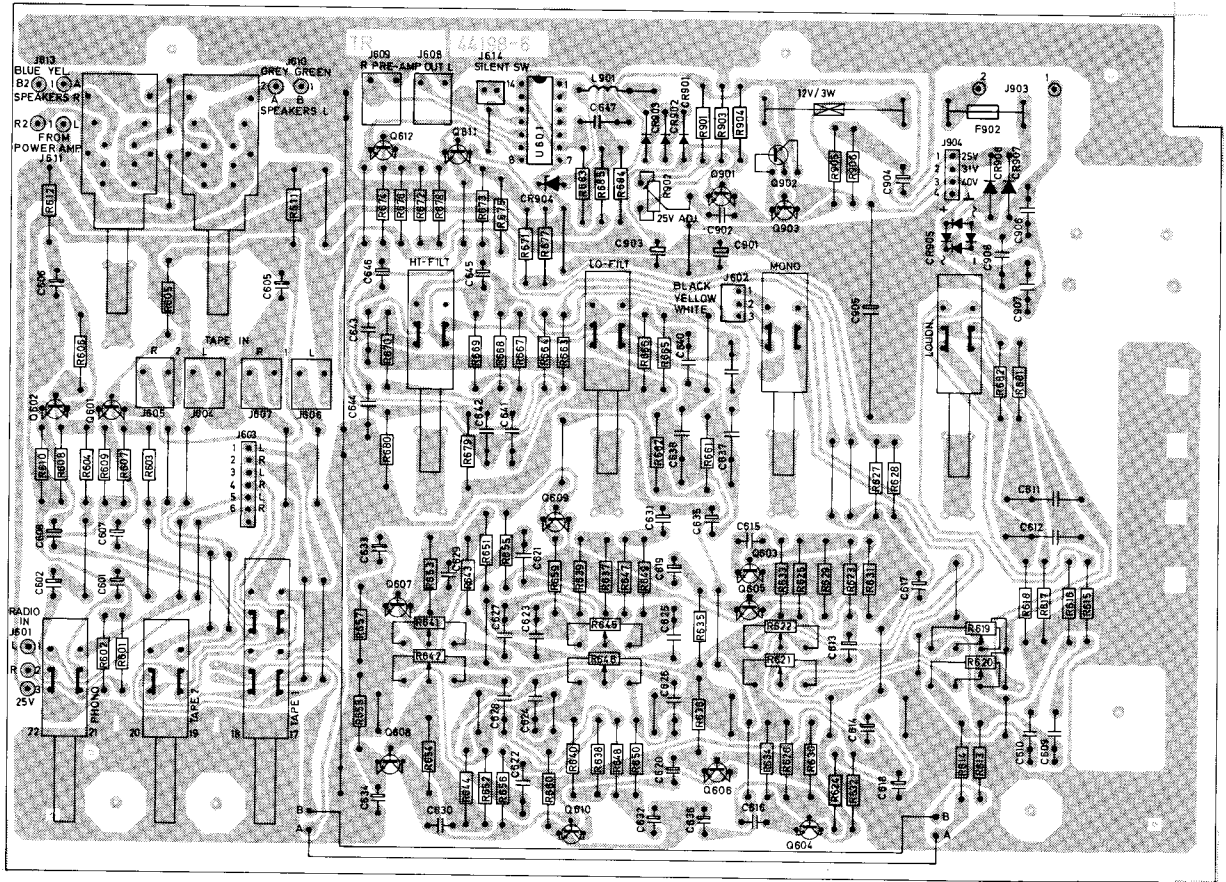
PART OF PREAMP BOARD

RIAA/INPUT-AMPLIFIER, POWER-AMPLIFIER



Seen from the solder side

PRE-AMPLIFIER



Seen from the solder side

POWER AMPLIFIER

