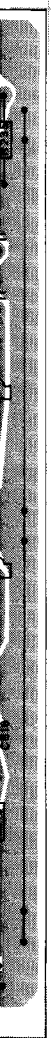


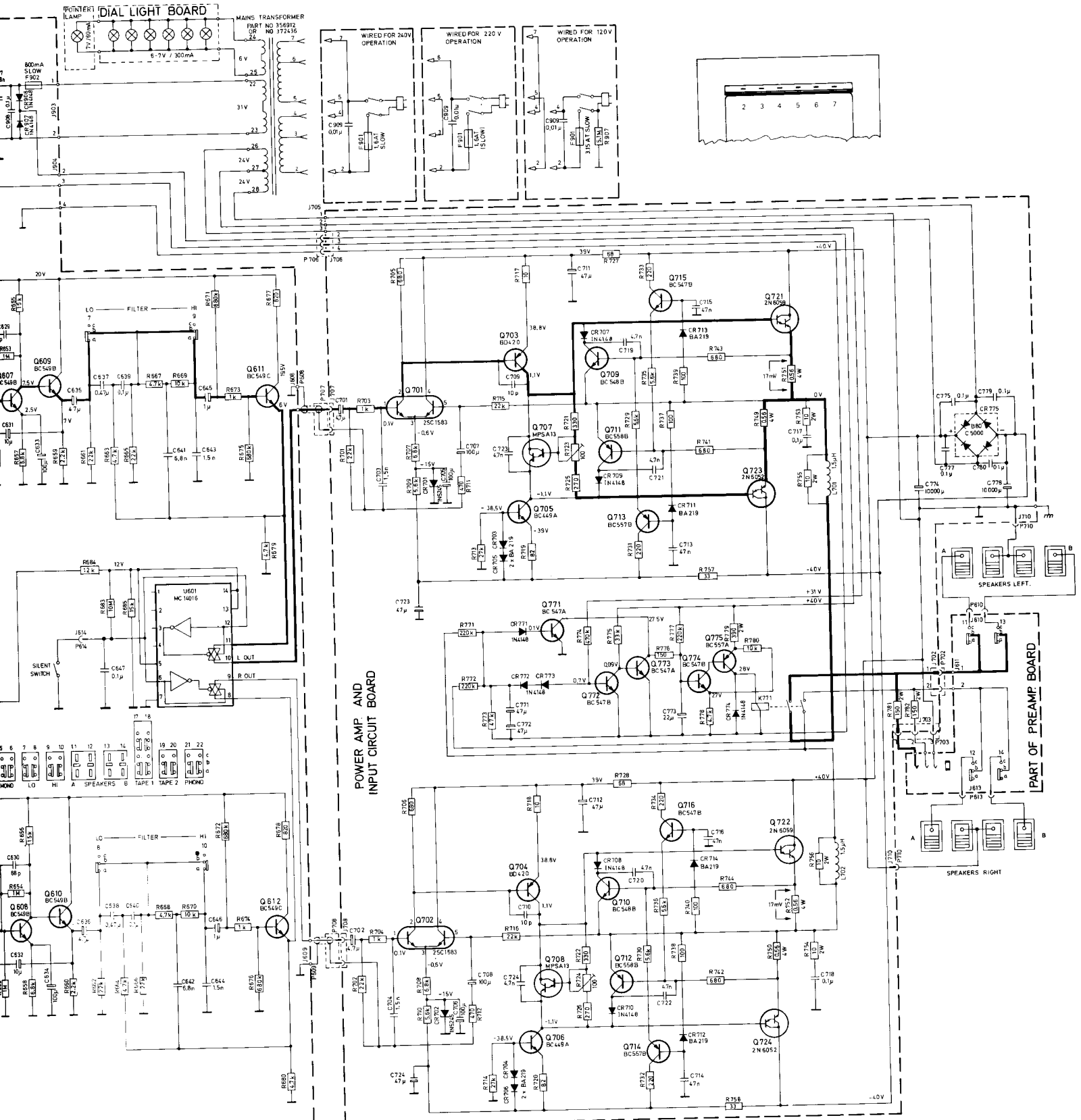
R819 AND R820 ARE 820 OHM  
 R821 AND R822 ARE 5.6 K OHM  
 IN U.S. MODEL 12

HF - SECTION NO. 42100

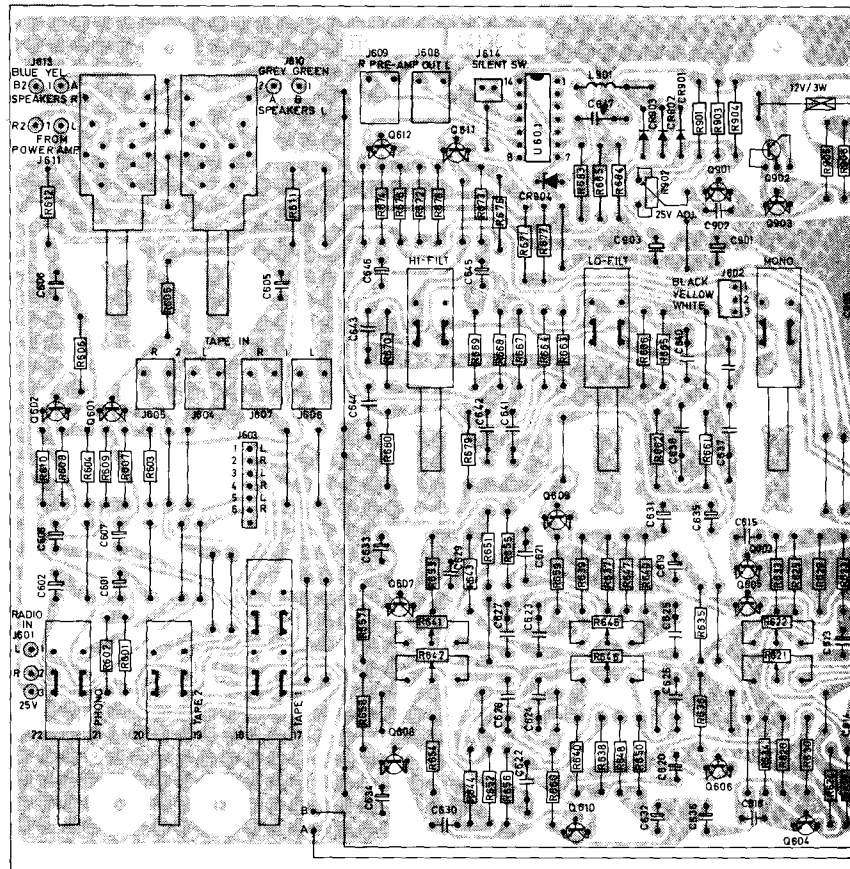






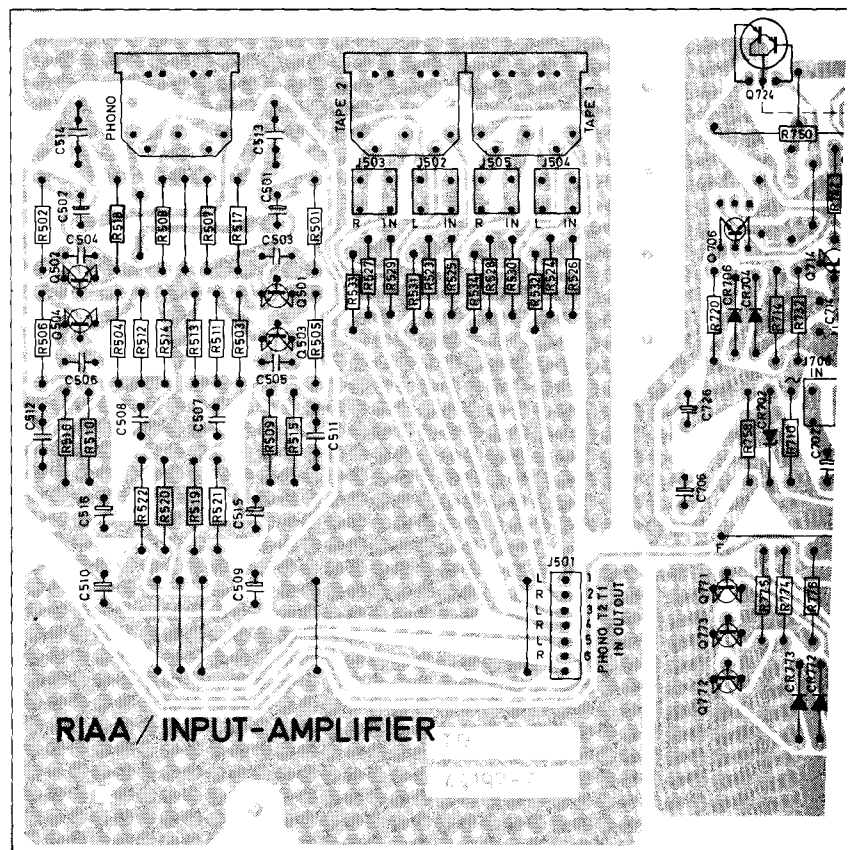


**PRE-AMPLIFIER**

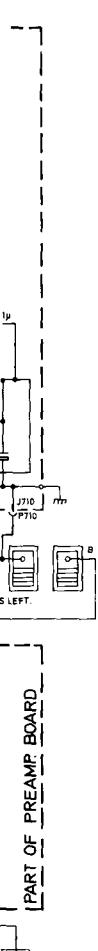


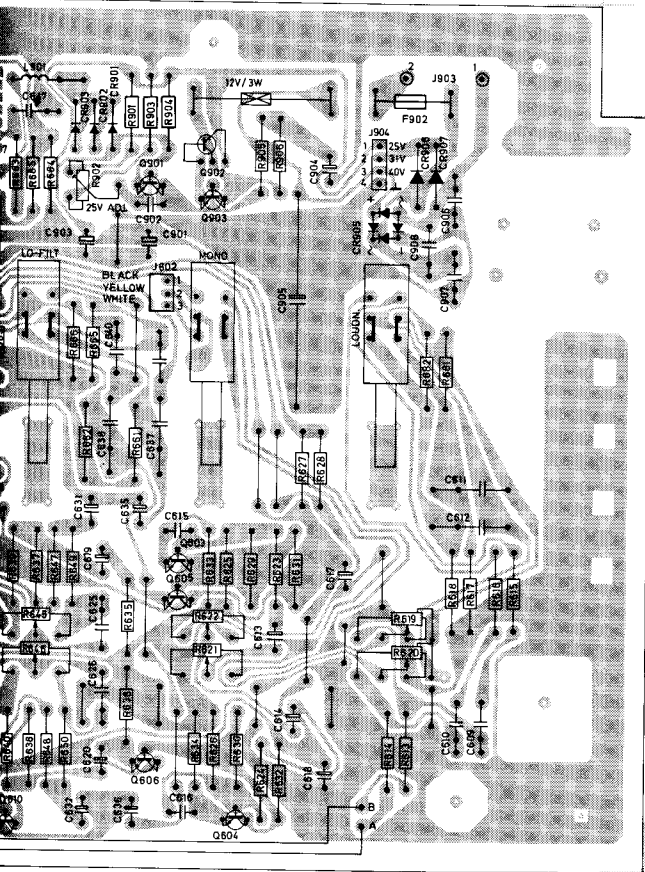
Seen from the solder side

**RIAA/INPUT-AMPLIFIER, POWER-AMPLIFIER**



Seen from the solder side





PIER

