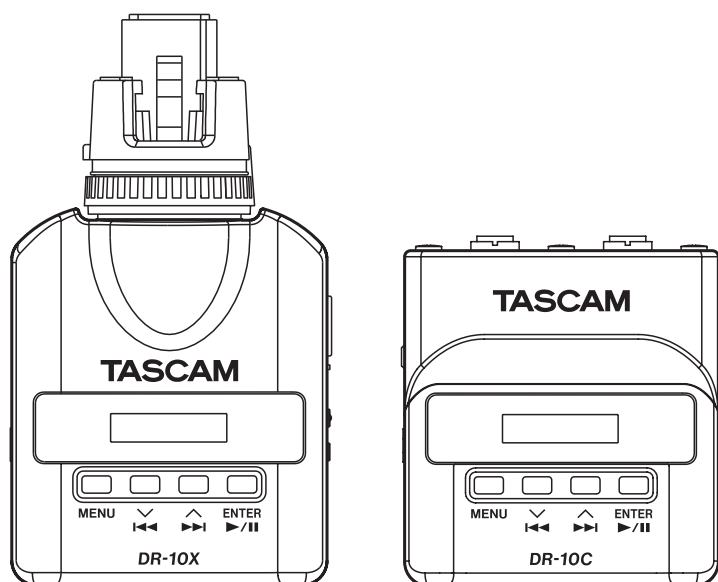


TASCAM



SERVICE MANUAL

DR-10X/10C

Compact Linear PCM Recorder

CONTENTS

1. Test Mode	2
2. Block Diagram (DR-10X).....	3
Block Diagram (DR-10C).....	4
3. Level Diagram (DR-10X).....	5
Level Diagram (DR-10C 1/4).....	6
Level Diagram (DR-10C 2/4).....	7
Level Diagram (DR-10C 3/4).....	8
Level Diagram (DR-10C 4/4).....	9
4. Exploded Views and Parts List (DR-10X).....	10
Exploded Views and Parts List (DR-10C).....	12
5. PC Boards and Parts List.....	14
6. Safety parts.....	20
7. Included Accessories	21

目次

1. テストモード	2
2. ブロックダイアグラム (DR-10X).....	3
ブロックダイアグラム (DR-10C).....	4
3. レベルダイアグラム (DR-10X).....	5
レベルダイアグラム (DR-10C 1/4).....	6
レベルダイアグラム (DR-10C 2/4).....	7
レベルダイアグラム (DR-10C 3/4).....	8
レベルダイアグラム (DR-10C 4/4).....	9
4. 分解図とパーツリスト (DR-10X).....	10
分解図とパーツリスト (DR-10C).....	12
5. 基板図とパーツリスト	14
6. 安全部品	20
7. 付属品	21

INSTRUCTIONS FOR SERVICE PERSONNEL

BEFORE RETURNING APPLIANCE TO THE CUSTOMER, MAKE LEAKAGE-CURRENT OR RESISTANCE MEASUREMENTS TO DETERMINE THAT EXPOSED PARTS ARE ACCEPTABLY INSULATED FROM THE SUPPLY CIRCUIT.

1. Test Mode

テストモード

1. How to enter the test mode

While holding down **PHONES [-]+I◀◀** keys, switch the power on.
"TASCAM DR-10" will appear on the display.

If when the process goes to a test mode that requires forced set to the RTC, it is necessary to RTC set first. In this case appears in the RTC setting screen earlier, the setting is completed, **"TEST MODE"** is displayed, unit will proceed to the test mode.

2. How to operation and the result

When **"TEST MODE"** is displayed, pressing the **MENU** key or **ENTER/▶/||** key shows the following test items.

1. テストモードの起動方法

PHONES [-]+I◀◀ キーを押しながら電源を投入する。
 ディスプレイ上には**"TASCAM DR-10"**が表示される。

テストモード移行時にRTC強制設定が必要な場合は、先にRTC設定を行う必要がある。この場合はRTC設定画面が表示され、設定が完了すると、**"TEST MODE"**が表示されテストモードに移行する。

2. 操作方法と判定結果

"TEST MODE"と表示されている状態で**MENU**キーまたは**ENTER/▶/||**キーを押すと下記のテスト項目を表示する。

TEST items / テスト項目	TEST function / テスト機能	TEST contents / テスト内容	OK	NG
"1 OLED test"	"1 WHITE OUT"	The entire screen lights. 画面全体が点灯表示	"OLED OK"	"OLED FAILURE" or "I2C FAILURE" or "ILLEGAL PARA!"
	"2 BLACK OUT"	The entire screen is off. 画面全体が消灯表示		
	"3 Power Save"	Display the "Contrast 000" at a minimum contrast. "Contrast 000 " を最小コントラストで表示		
	"4 Run 1s Row"	While the entire screen is off, only one horizontal line that is lit is scanned from top to bottom. 点灯する横線1本のみが上から下まで走査		
	"5 Run 1s Col"	While the entire screen is off, only vertical line one that is lit is scanned from left to right. 点灯する縦線1本のみが左から右まで走査		
	"6 Run 0s Row"	While the entire screen is lit, only one horizontal line that is off is scanned from top to bottom. 消灯する横線1本のみが上から下まで走査		
	"7 Run 0s Col"	While the entire screen is lit, only one vertical line that is off is scanned from left to right. 消灯する縦線1本のみが左から右まで走査		
"2 IRDA test"		IRDA transceiver test IRDA送受信試験	"IRDA OK"	"IRDA FAILURE"
"3 RTC test "		RTC operation check RTC動作確認	"RTC OK"	"RTC FAILURE" or "RTC MALFUNC!!" or "RTC COMM.NG!"

- In the TEST items, use **▶▶** key to move 1 → 2 or 2 → 3, use **I◀◀** key to move 3 → 2 or 2 → 1.
- Use **ENTER/▶/||** key to move from TEST items **"1 OLED test"** to TEST function, use **MENU** key to move from TEST function to TEST items **"1 OLED test"**.
- In TEST item **"1 OLED test"**, use **▶▶** key to move TEST function 1 → 2 → ... → 6 → 7, use **▶▶** key to move TEST function 7 → 6 → ... → 2 → 1.
- Use **ENTER/▶/||** key to run each test.
- Check visually at the same time, while running TEST function (1~7) of test items **"1 OLED test"**.

3. How to exit from test mode

In the above test items, press the **▶▶** from **"3 RTC test "**, **"Shutdown PWR"** is displayed.

And, the power is turned off by pressing the **ENTER/▶/||** key or performing a normal power-off operation, and exit from the test mode.

- テスト項目の1→2→3の移動は**▶▶**で行い、3→2→1の移動は**I◀◀**で行う。
- テスト項目**"1 OLED test"**からテスト機能へ移動するには**ENTER/▶/||**キーを押して、テスト機能からテスト項目**"1 OLED test"**へ移動するには**MENU**キーを押す。
- テスト項目**"1 OLED test"**で、テスト機能1→2→...→6→7の移動は**▶▶**で行い、7→6→...→2→1の移動は**I◀◀**で行う。
- 各テストは**ENTER/▶/||**キーで実行する。
- テスト項目**"1 OLED test"**で、テスト機能1~7を実行中は、必ず目視での確認も同時に行う。

3. テストモードの終了方法

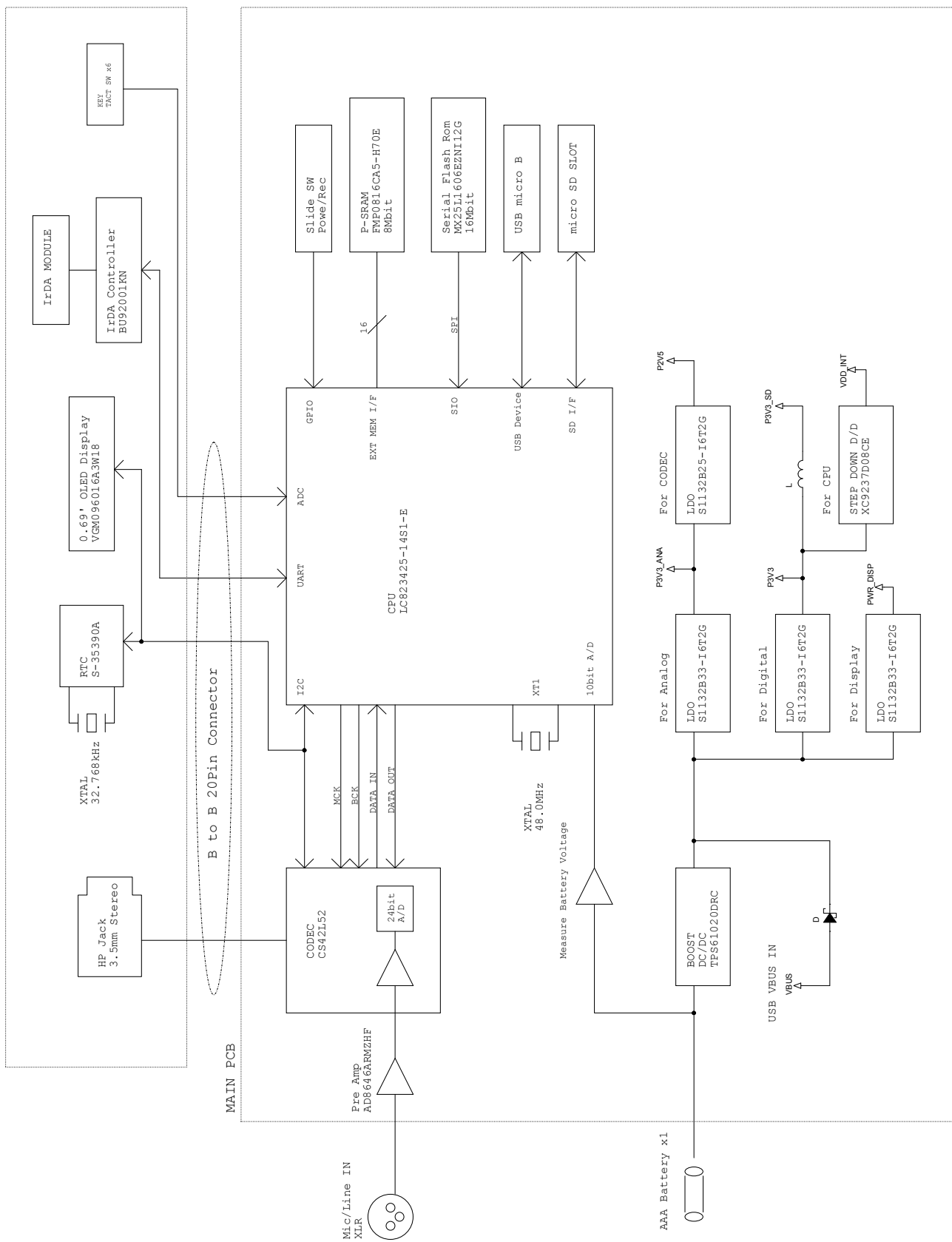
上記のテスト項目で、**"3 RTC test"**から**▶▶**を押すと、**"Shutdown PWR"**が表示される。

そのときに**ENTER/▶/||**キーを押すか通常の電源オフ操作を行うと電源がオフになり、テストモードから出ることができる。

2. Block Diagram (DR-10X)

ブロックダイアグラム (DR-10X)

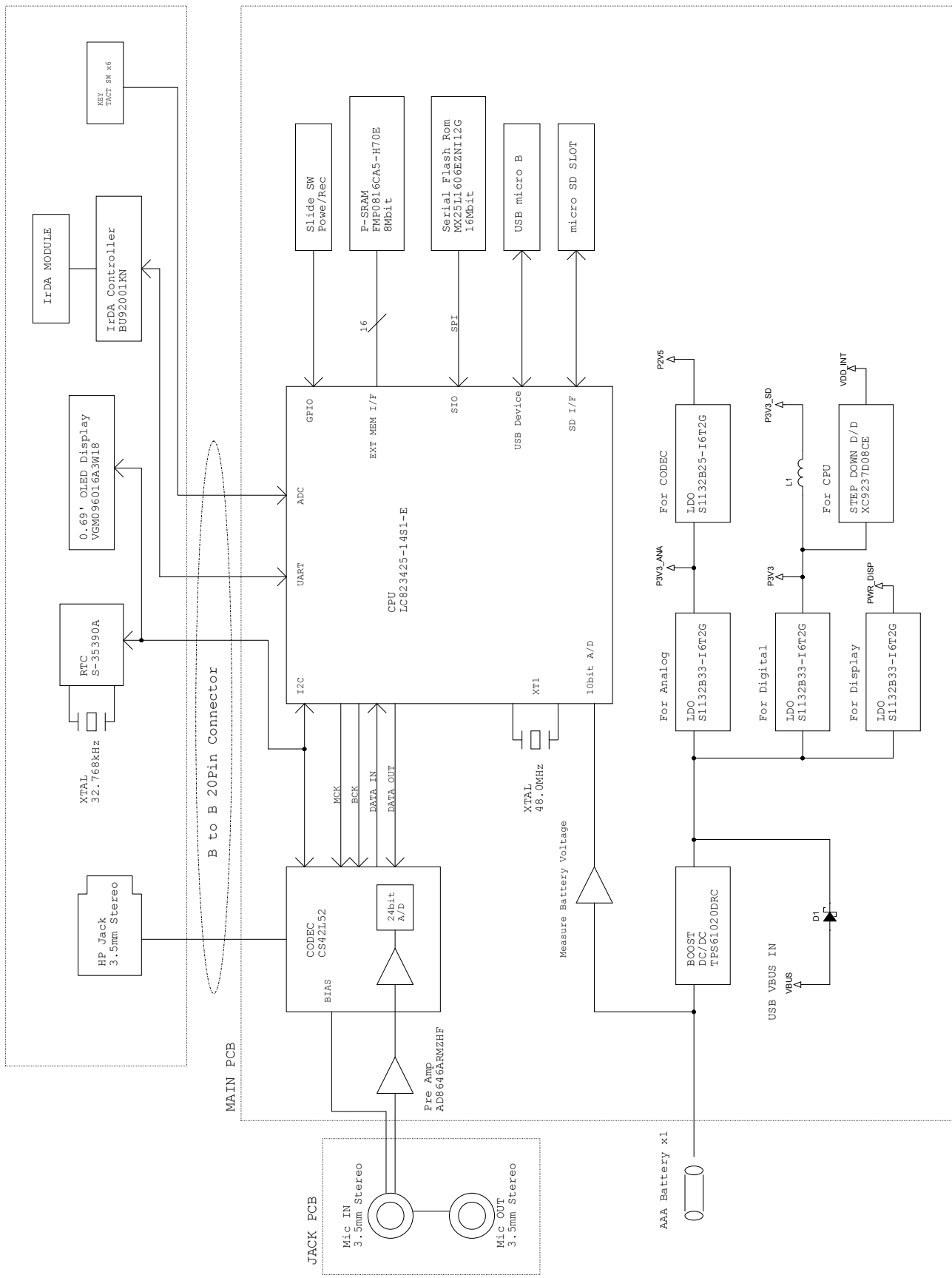
DR-10X Hardware Block Diagram



Block Diagram (DR-10C)

ブロックダイアグラム (DR-10C)

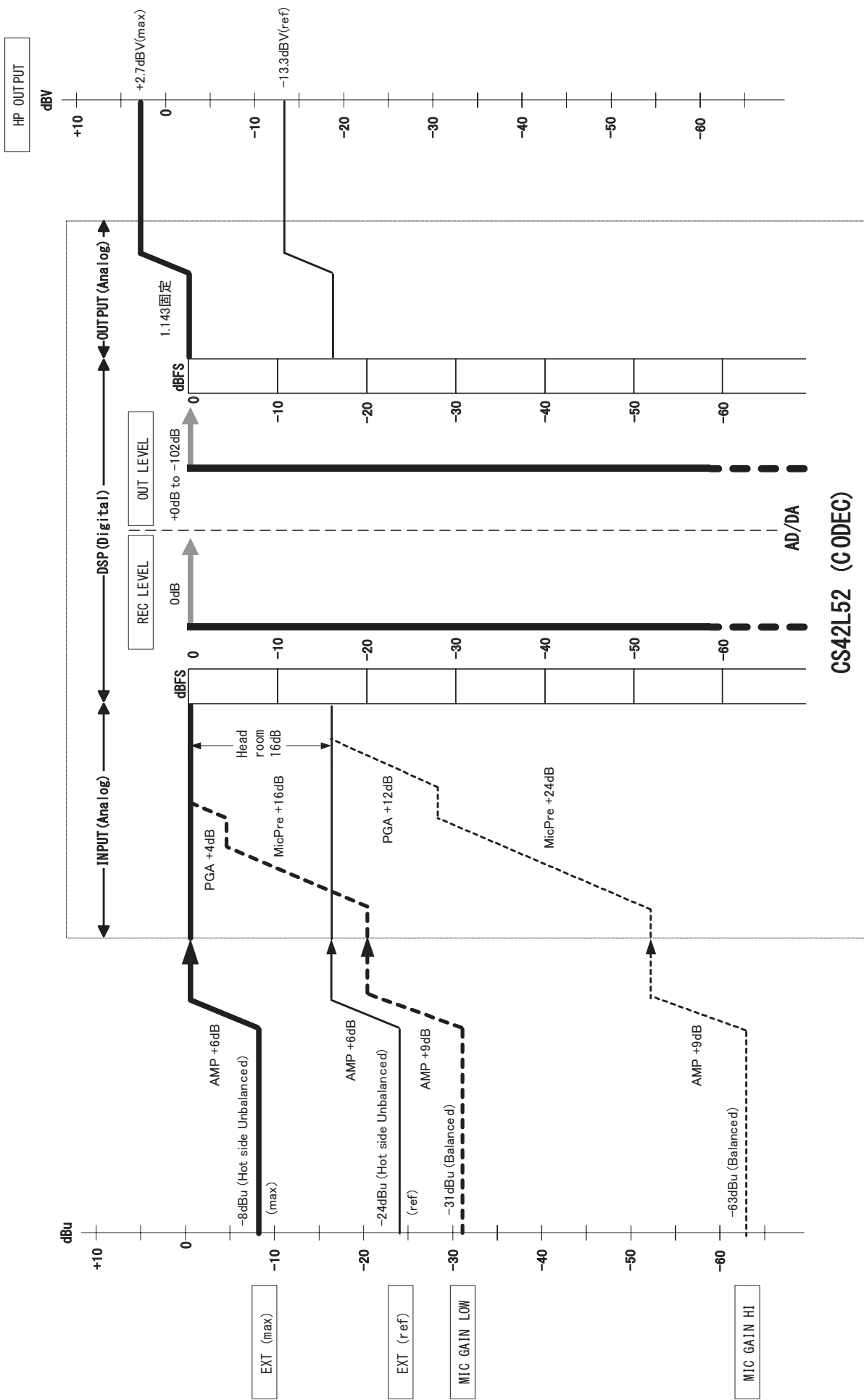
DR-10CS Hardware Block Diagram



3. Level Diagram (DR-10X)

レベルダイアグラム (DR-10X)

DR-10X Level Diagram

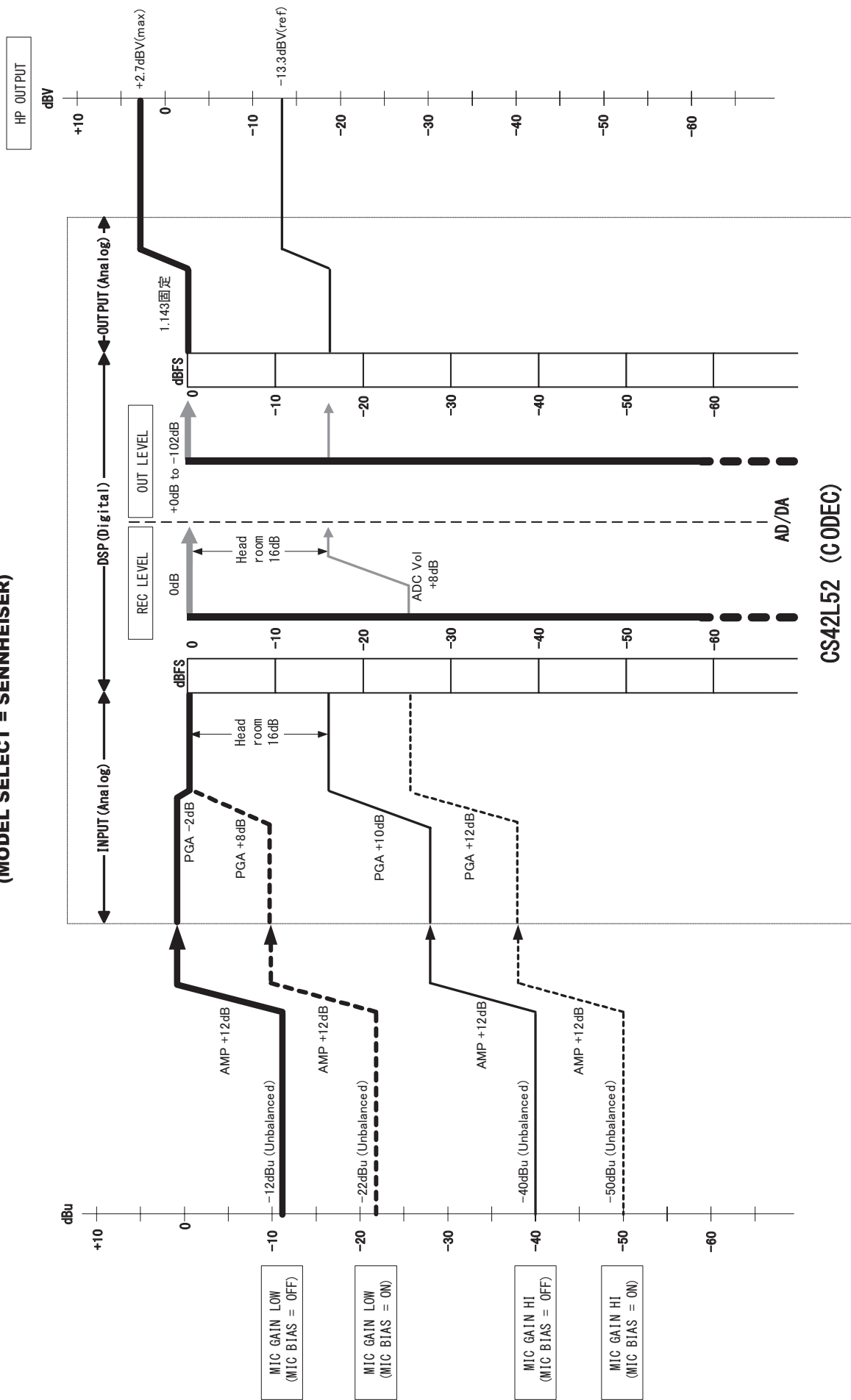


CS42L52 (CODEC)

Level Diagram (DR-10C 1/4)

レベルダイアグラム (DR-10C 1/4)

DR-10C Level Diagram (MODEL SELECT = SENNHEISER)

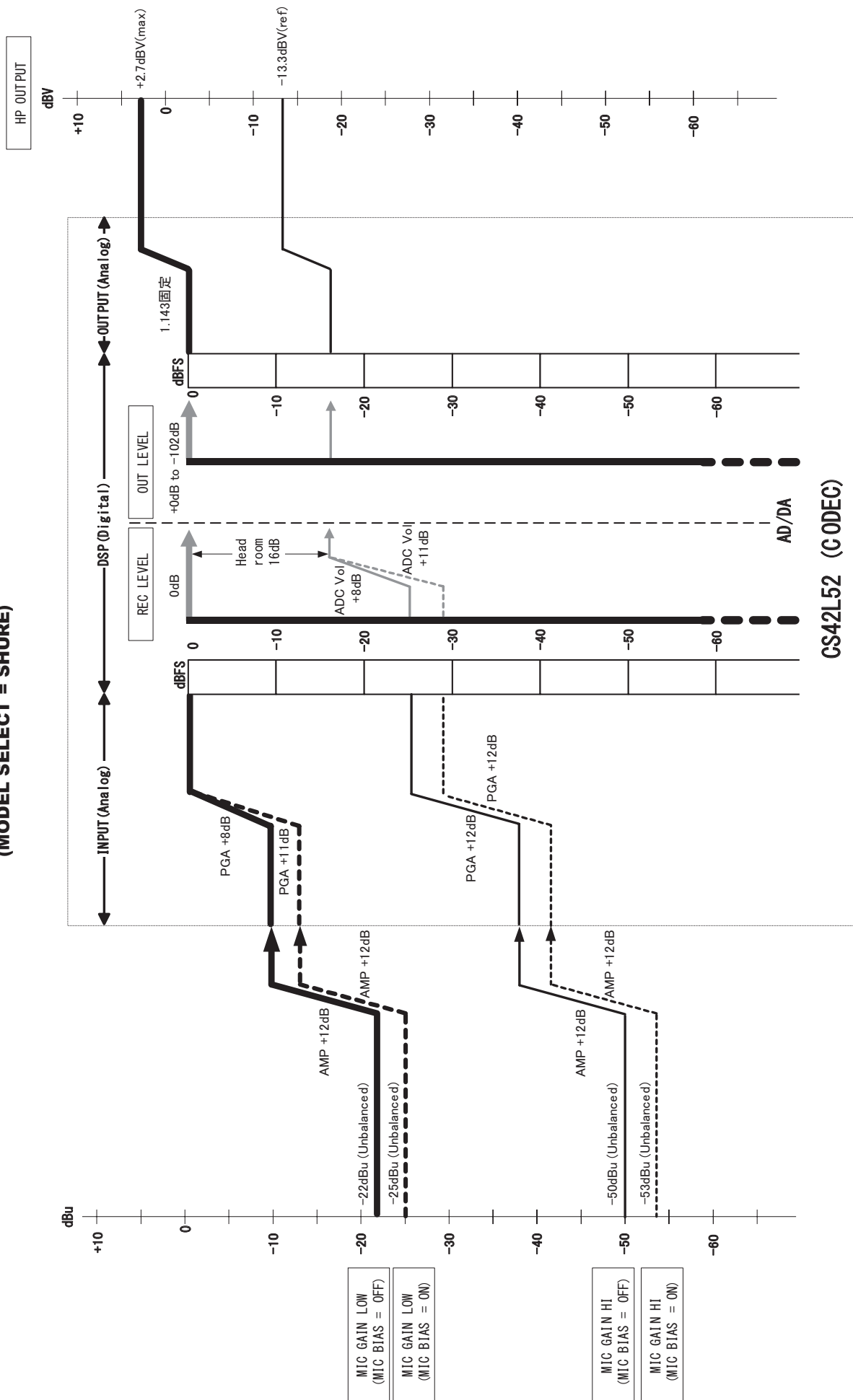


Level Diagram (DR-10C 2/4)

レベルダイアグラム (DR-10C 2/4)

DR-10C Level Diagram

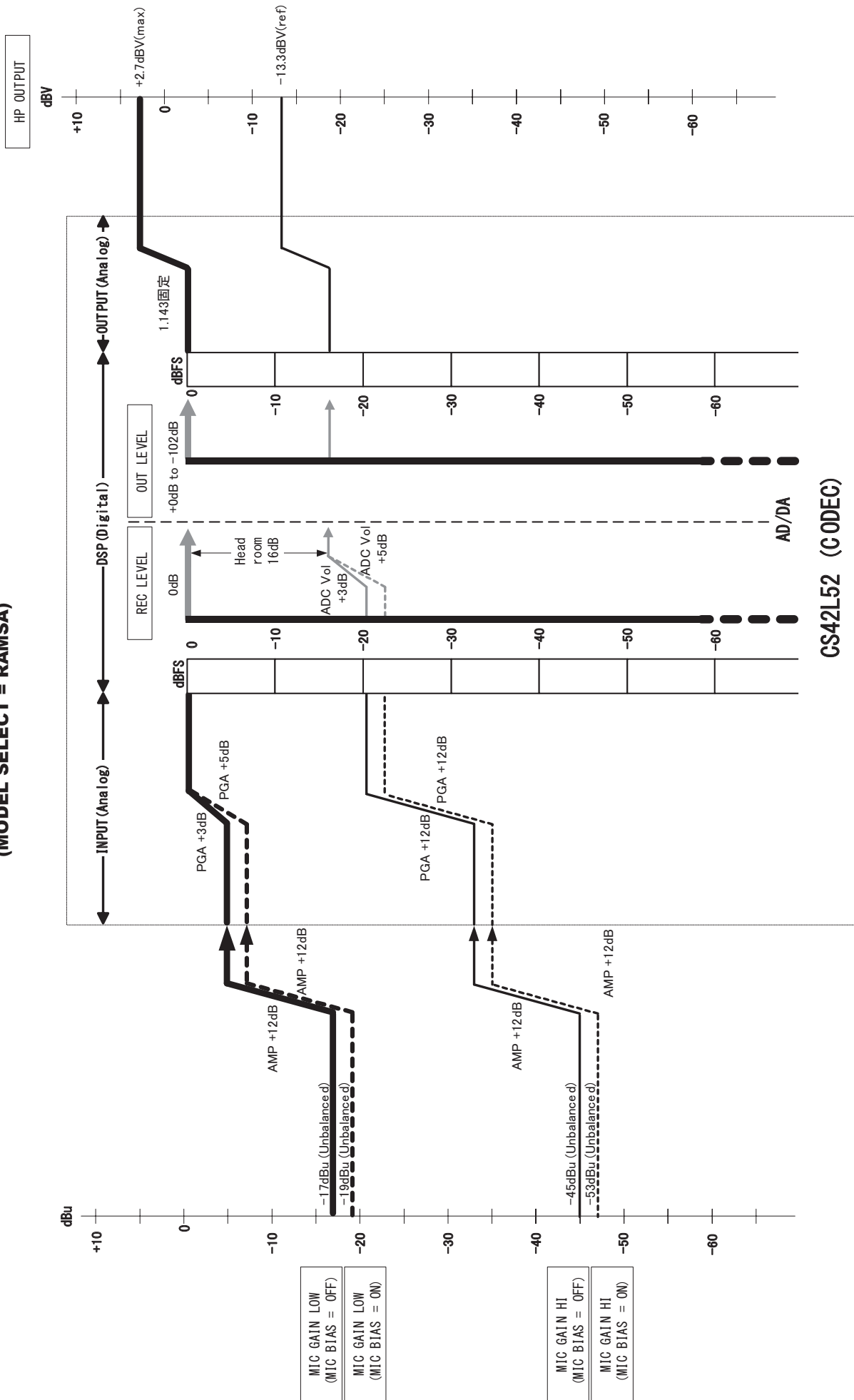
(MODEL SELECT = SHURE)



Level Diagram (DR-10C 3/4)

レベルダイアグラム (DR-10C 3/4)

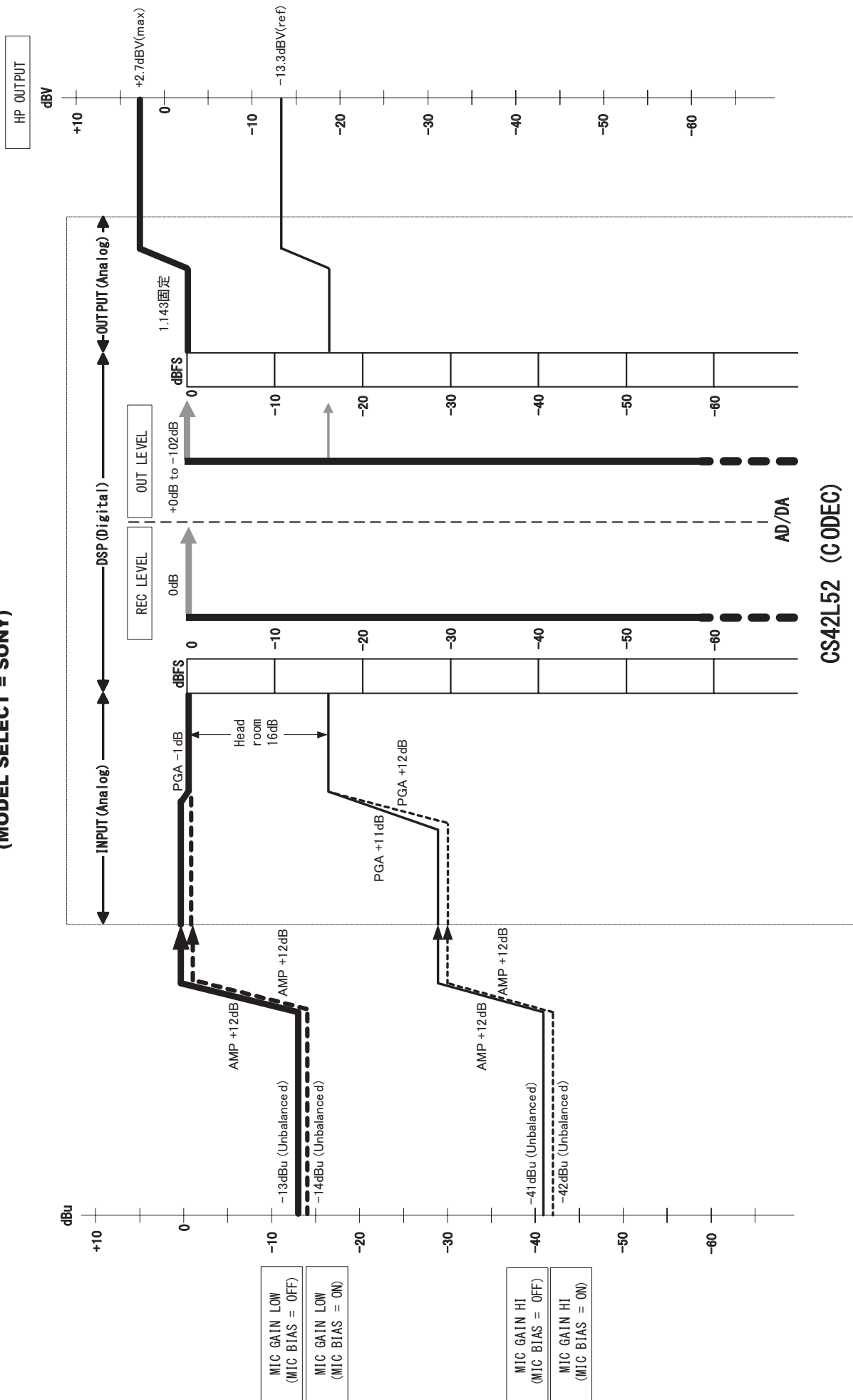
DR-10C Level Diagram (MODEL SELECT = RAMSA)



Level Diagram (DR-10C 4/4)

レベルダイアグラム (DR-10C 4/4)

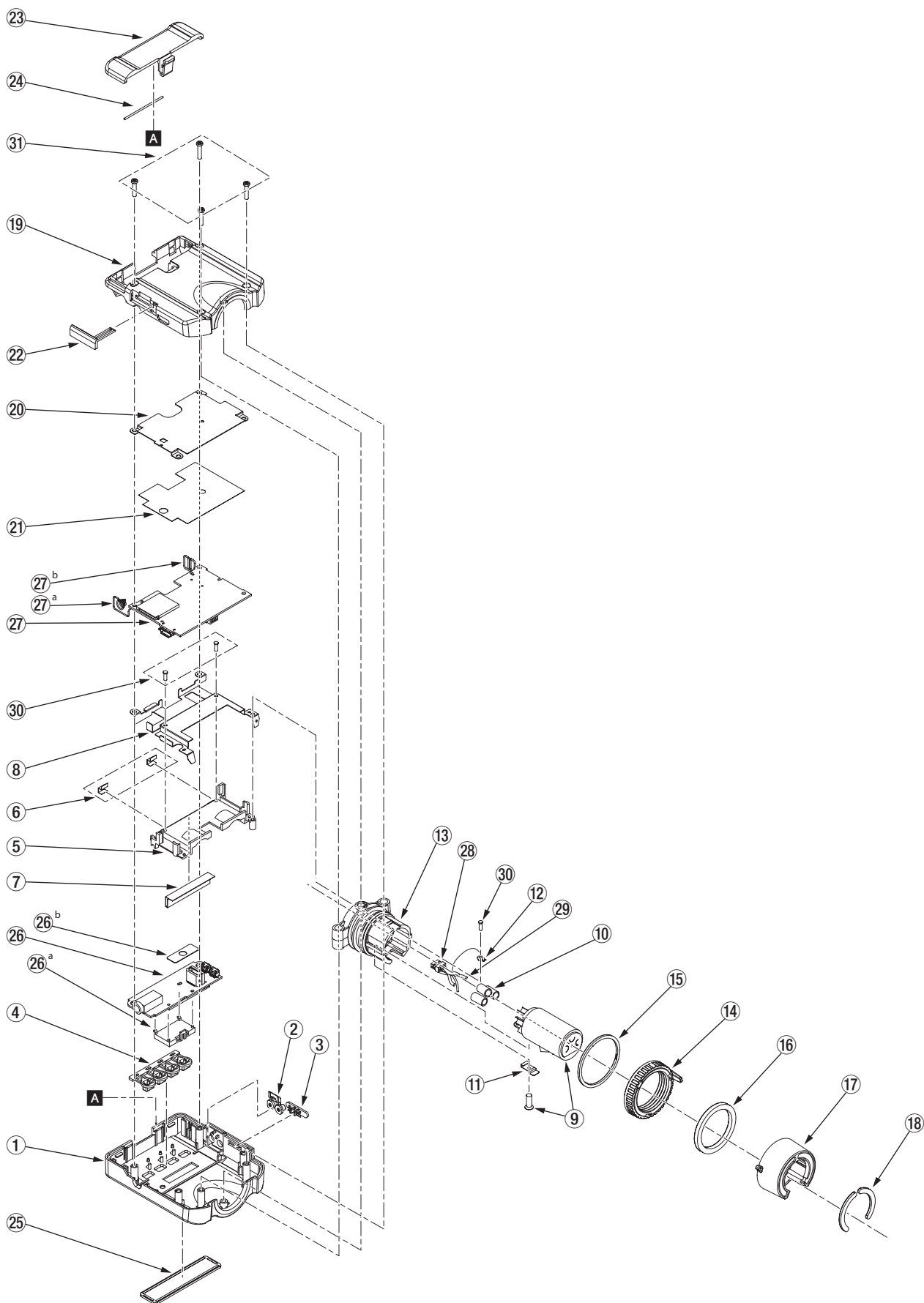
DR-10C Level Diagram (MODEL SELECT = SONY)



CS42L52 (CODEC)

4. Exploded Views and Parts List (DR-10X)

分解図とパーツリスト (DR-10X)

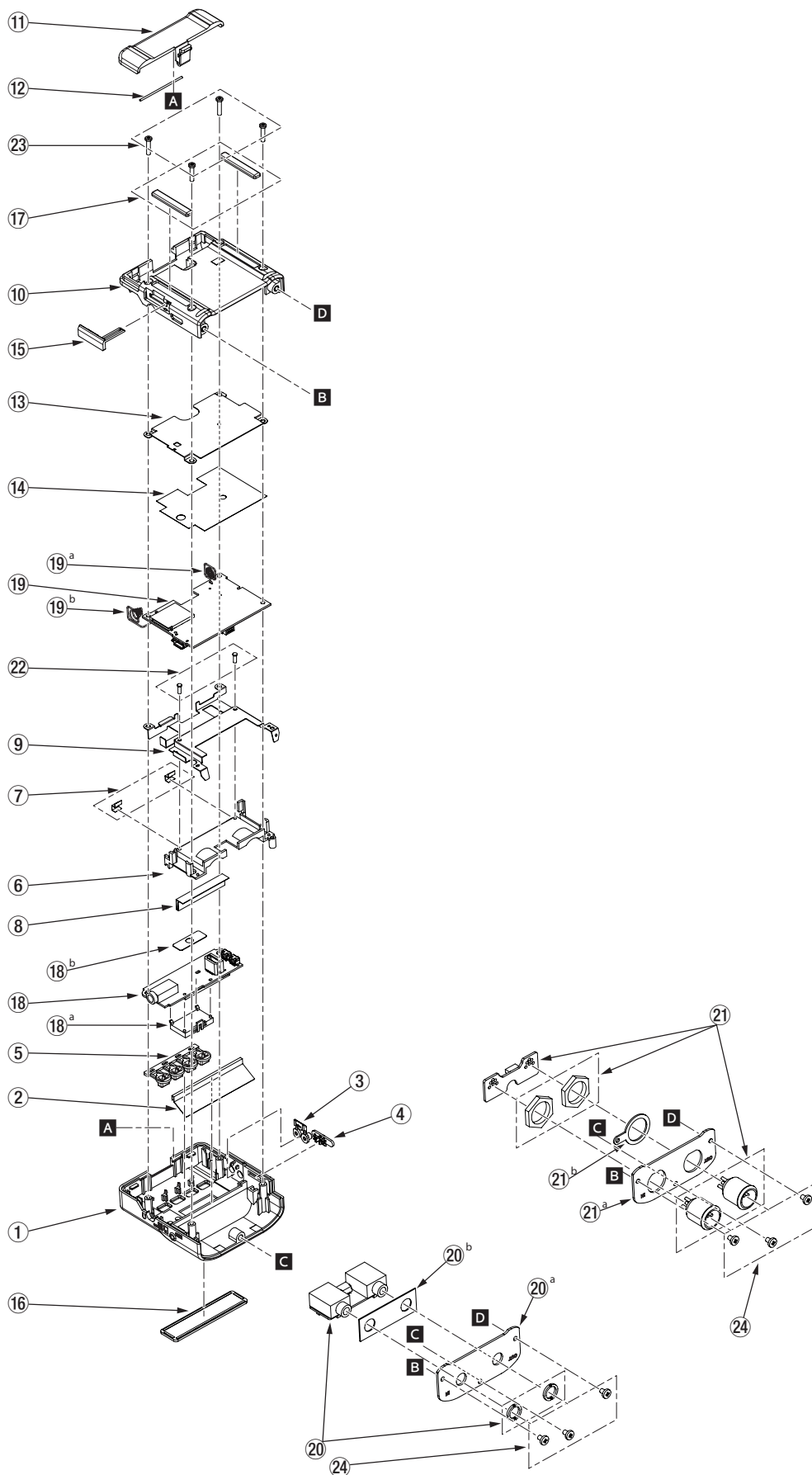


CAUTION Part with numbers in parentheses () cannot be ordered.**注意** "()"付き品番は、発注できません。

REF.NO.	PARTS NO.	DESCRIPTION .	Qty.	REMARKS
1	M03710400C	CASE,TOP DR10X G	1	
2	M03721700B	BUTTON,VOL DR10 G	1	
3	M03341100A	KNOB,SLIDE DR40 G	1	
4	M03721800A	BUTTON,TOP DR10 G	1	
5	M03721500C	ESCUTCHEON,INR DR10 G	1	
6	M03557200A	SHEET,GND CU 3.5*9*0.1 G	2	
7	M03748800A	SHEET,GND 15*28 G	1	
8	M03721600D	CHASSIS,CTR DR10 G	1	
9	E02301500A	CONN ASSY,SPF-13C G	1	
10	E01658800A	TUBE,3.5*15MM BLK G	3	
11	M03752100A	SHEET,CU T01*4*16 G	1	
12	M03740500A	LUG TERMINAL,DR10X G	1	
13	M03711100C	BRACKET,SOCKET DR10X G	1	
14	M03711200B	RING,DR10X G	1	
15	M03714300A	RING,RED DR10X G	1	
16	M03760500A	CUSHION,260*203 DR10X G	1	
17	M03711300C	BRACKET,MIC DR10X G	1	
18	M03711400A	CUSHION,MIC DR10X G	2	
19	M03711500B	CASE,BOTTOM DR10X G	1	
20	M03723000A	CHASSIS,BTM DR10C G	1	
21	M03776000A	SHEET,BTM DR10 G	1	
22	M03722000B	COVER,SD DR10 G	1	
23	M03721900C	COVER,BAT LID DR10 G	1	
24	M03723600A	SHAFT,COVER LID DR10 G	1	
25	M03722200C	WINDOW,DR10 G	1	
26	E95521000A	PCB ASSY,PANEL DR10 G	1	See "GATHER PCB, PANEL DR10 G" on page 20
	26a (M03722100B)	BRACKET,OLED DR10 G	1	
	26b (M02973400A)	SHEET,SLIDE 3POINT DR100	1	
27	E95521800A	PCB ASSY,MAIN DR10X G	1	See "GATHER PCB, MAIN DR10 G" on page 20
	27a (M03722400B)	CPRSN SPR,BAT P DR10 G	1	
	27b (M03722500B)	CPRSN SPR,BAT M DR10 G	1	
28	E02292000A	HARNESS ASSY,DR10X G	1	
29	E02302300A	WIRE,#28 L42 G	1	
30	B00326000A	SCREW,MPBR 1.4*4FZB G	2	
31	B00334100A	SCREW,MPPR 1.7*8 FZB G	4	

Exploded Views and Parts List (DR-10C)

分解図とパーツリスト (DR-10C)



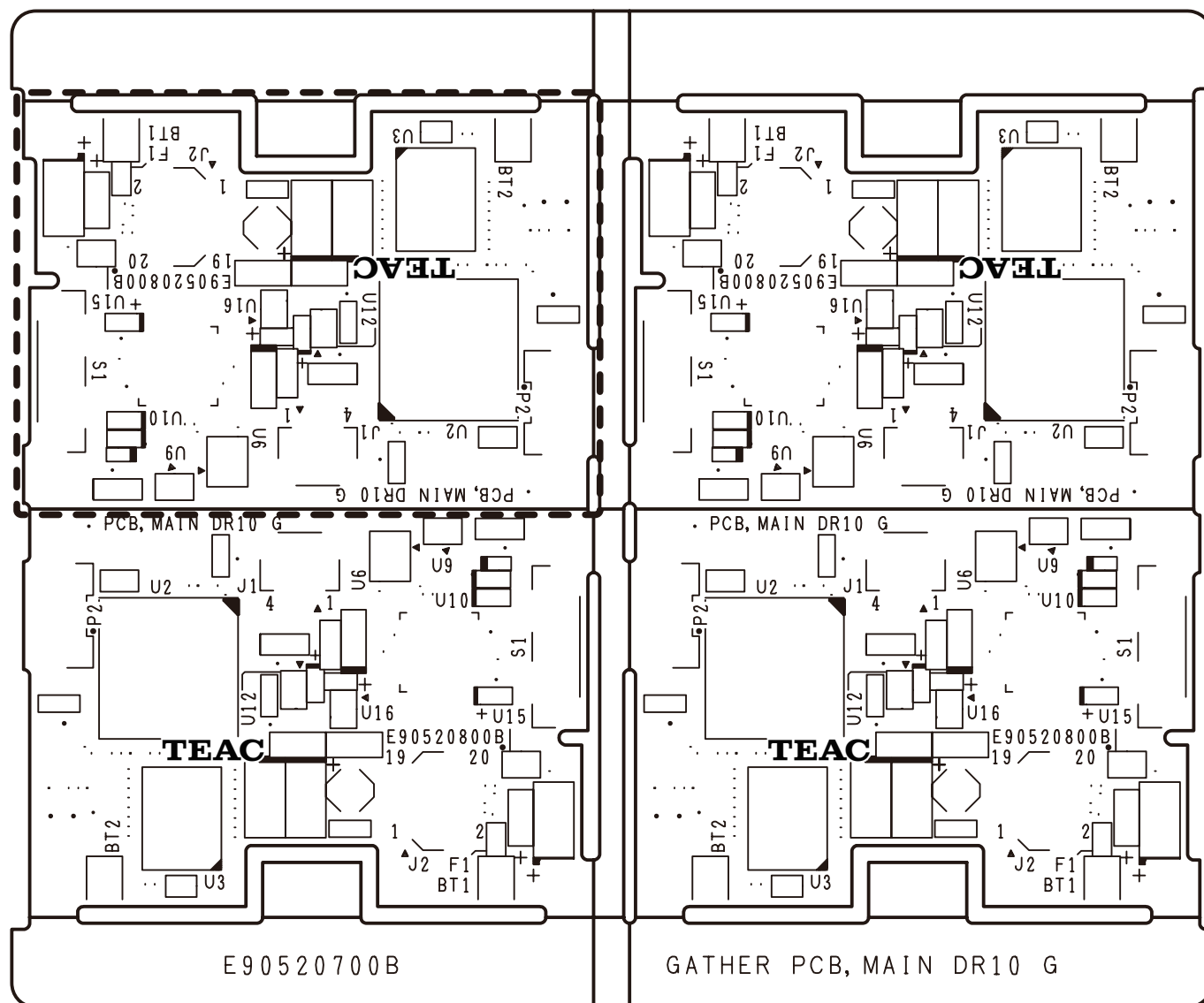
CAUTION Part with numbers in parentheses () cannot be ordered.**注意** "()"付き品番は、発注できません。

REF.NO.	PARTS NO.	DESCRIPTION .	Qty.	REMARKS
1	M03721300B	CASE,TOP DR10C G	1	
2	M03748700A	SHEET,GND 15*41.5 G	1	
3	M03721700B	BUTTON,VOL DR10 G	1	
4	M03341100A	KNOB,SLIDE DR40 G	1	
5	M03721800A	BUTTON,TOP DR10 G	1	
6	M03721500C	ESCUTCHEON,INR DR10 G	1	
7	M03557200A	SHEET,GND CU 3.5*9*0.1 G	2	
8	M03748800A	SHEET,GND 15*28 G	1	
9	M03721600D	CHASSIS,CTR DR10 G	1	
10	M03721400C	CASE,BTM DR10C G	1	
11	M03721900C	COVER,BAT LID DR10 G	1	
12	M03723600A	SHAFT,COVER LID DR10 G	1	
13	M03723000A	CHASSIS,BTM DR10C G	1	
14	M03776000A	SHEET,BTM DR10 G	1	
15	M03722000B	COVER,SD DR10 G	1	
16	M03722200C	WINDOW,DR10 G	1	
17	M03723200A	FOOT,RUBBER DR10 G	2	
18	E95521000A	PCB ASSY,PANEL DR10 G	1	See "GATHER PCB, PANEL DR10 G" on page 20
18a	M03722100B	BRACKET,OLED DR10 G	1	This part is included in E95521000A.
18b	M02973400A	SHEET,SLIDE 3POINT DR100	1	This part is included in E95521000A.
19	E95520800A	PCB ASSY,MAIN DR10C G	1	See "GATHER PCB, MAIN DR10 G" on page 20
19a	M03722400B	CPRSN SPR,BAT P DR10 G	1	This part is included in E95520800A.
19b	M03722500B	CPRSN SPR,BAT M DR10 G	1	This part is included in E95520800A.
20	(E95521200A)	PCBA,JACK 3.5MM DR10 G	1	DR-10CS Only, See "GA PCB, JACK DR10 G" on page 20
20a	(M03722800C)	BRACKET,3.5MM DR10C G	1	DR-10CS Only, This part is included in E95521200A.
20b	(M03767300A)	SHEET,GND 12*34 G	1	DR-10CS Only, This part is included in E95521200A.
21	(E95523100A)	PCBA,JACK MXLR4 DR10 G	1	DR-10CH Only, See "GA PCB, JACK DR10 G" on page 20
21a	(M03722700B)	BRACKET,MXLR DR10C G	1	DR-10CH Only, This part is included in E95523100A.
21b	(M0375520)	LUG,GND-24	1	DR-10CH Only, This part is included in E95523100A.
22	B00326000A	SCREW,MPBR 1.4*4FZB G	2	
23	B00334100A	SCREW,MPPR 1.7*8 FZB G	4	
24	B00171203A	SCREW,BP 2*3 FZB G	3	

5. PC Boards and Parts List

基板図とパーツリスト

GATHER PCB, MAIN DR10 G (Side A)

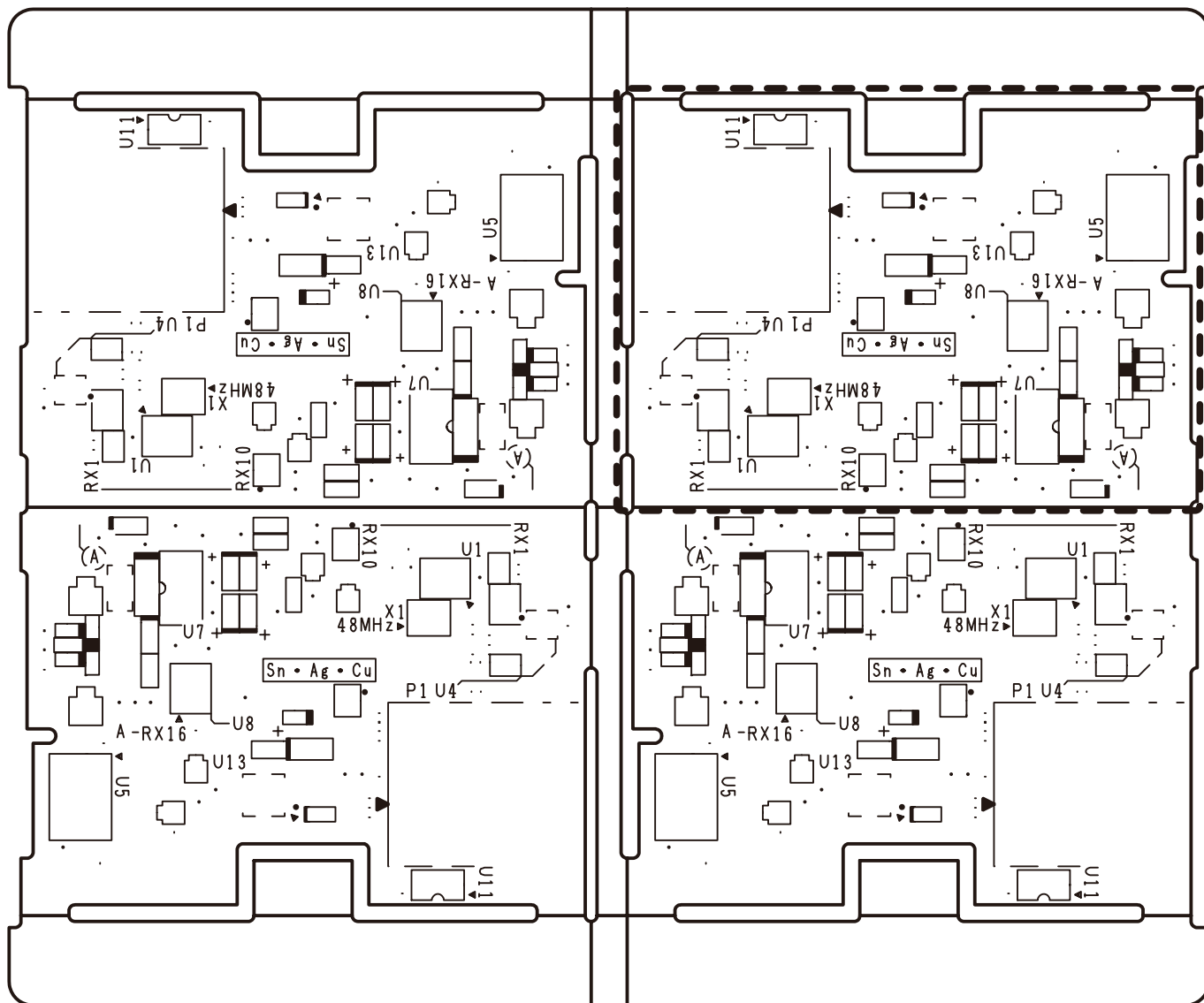


CAUTION The portion in the dashed box consists of service parts that need to be ordered using part numbers in Bold.

- 14 -

注意 破線部分は、太字品番で発注する補修部品になります。

GATHER PCB,MAIN DR10 G (Side B)

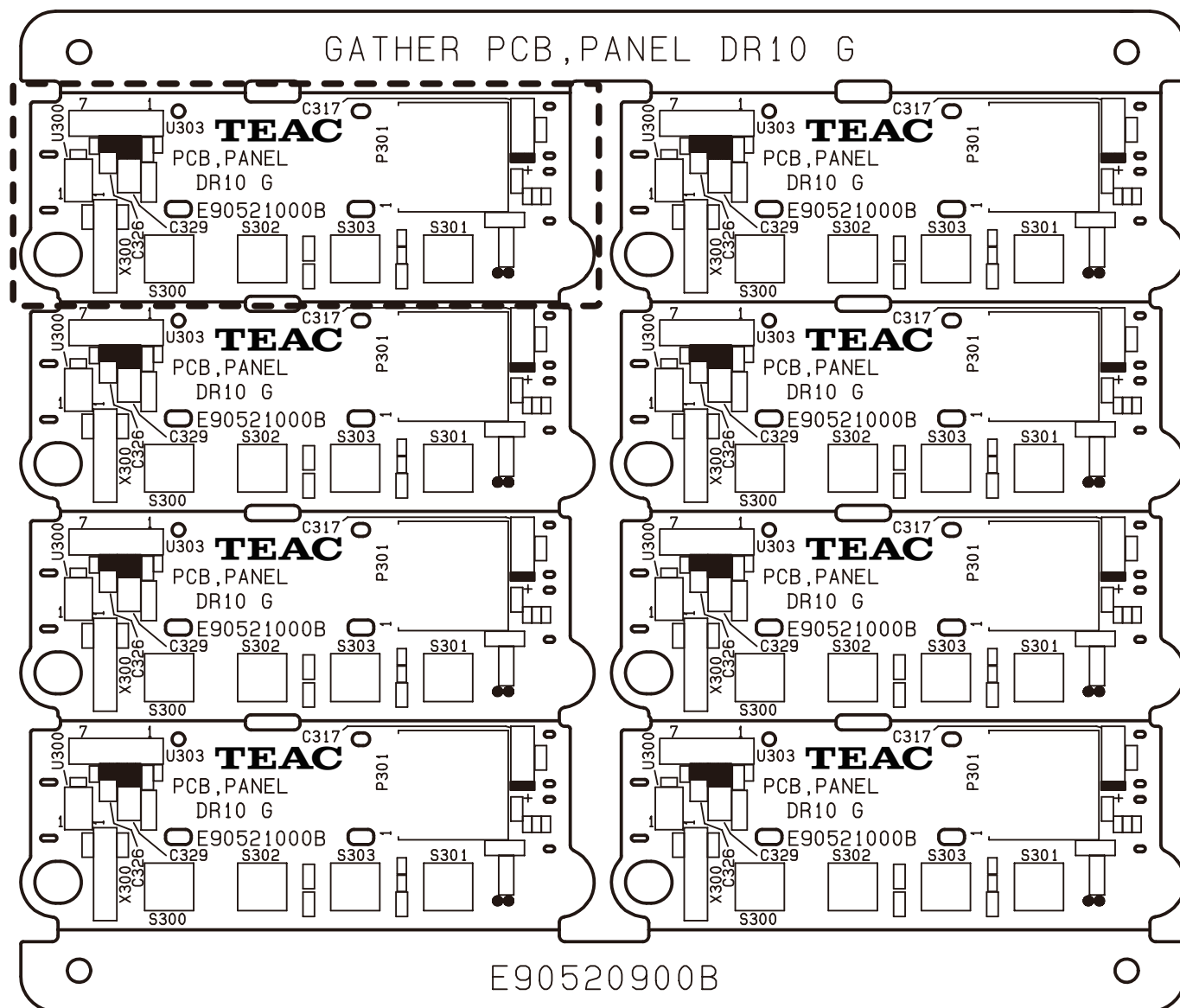


CAUTION The portion in the dashed box consists of service parts that need to be ordered using part numbers in Bold.

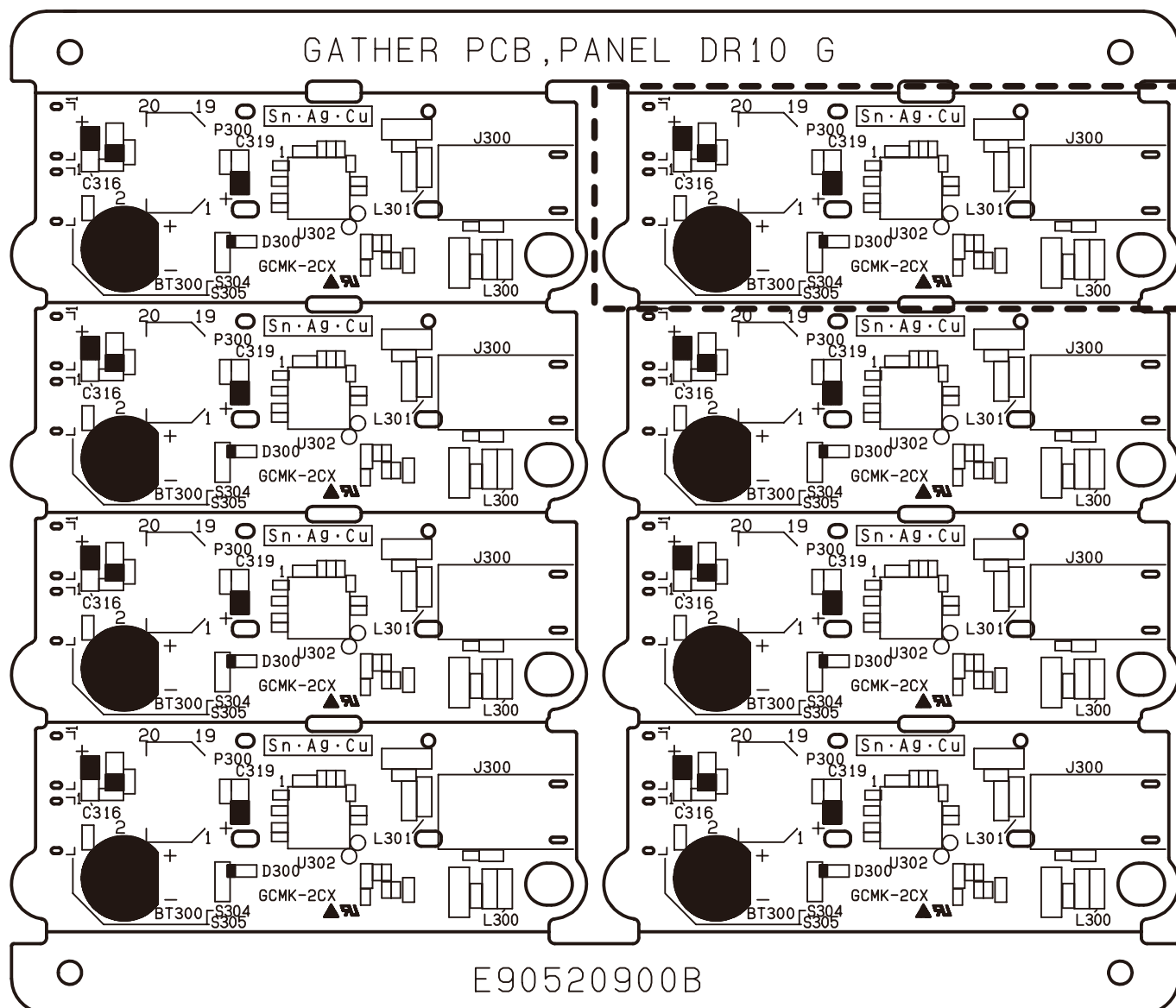
- 15 -

注意 破線部分は、太字品番で発注する補修部品になります。

GATHER PCB,PANEL DR10 G (Side A)



GATHER PCB,PANEL DR10 G (Side B)

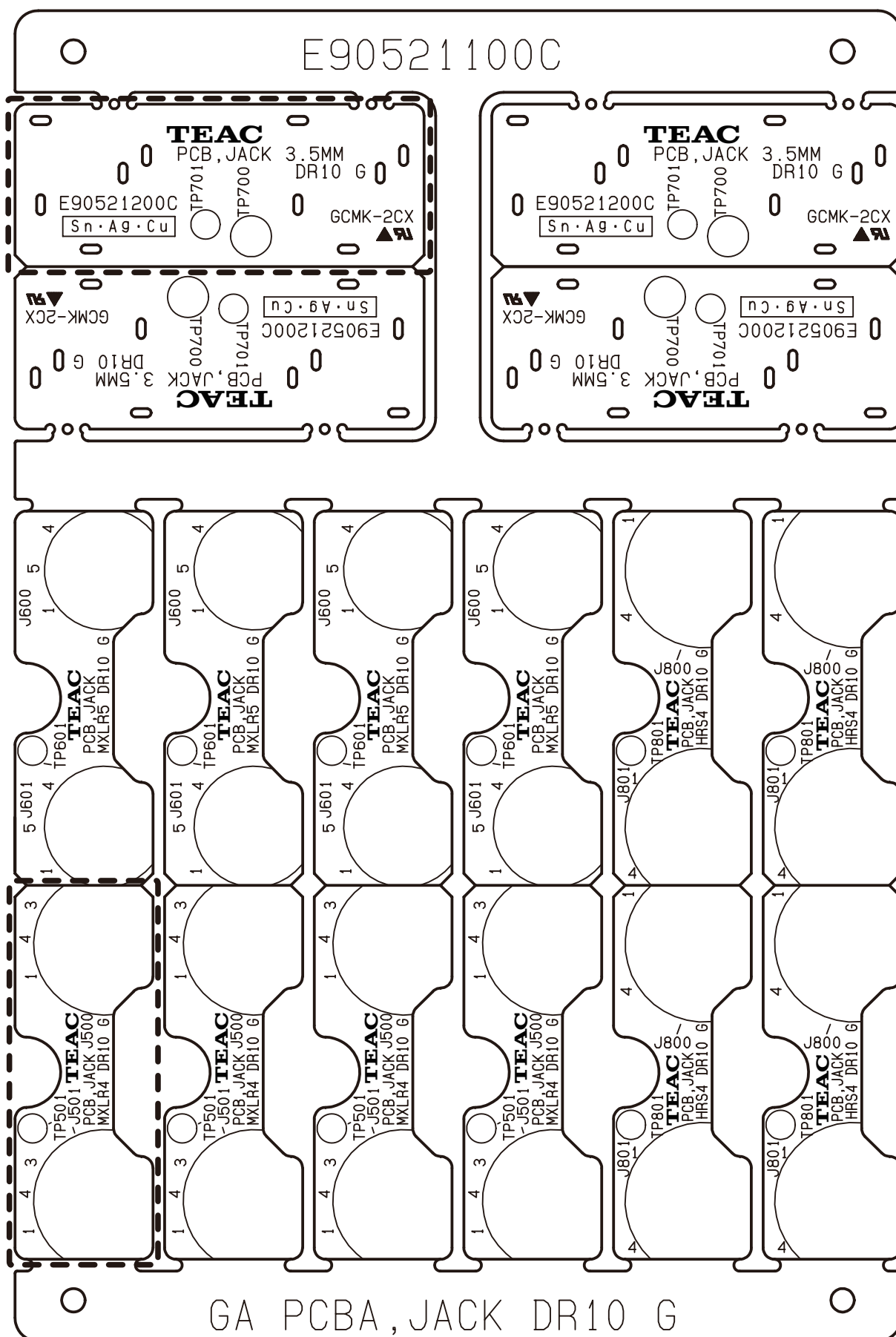


CAUTION The portion in the dashed box consists of service parts that need to be ordered using part numbers in Bold.

- 17 -

注意 破線部分は、太字品番で発注する補修部品になります。

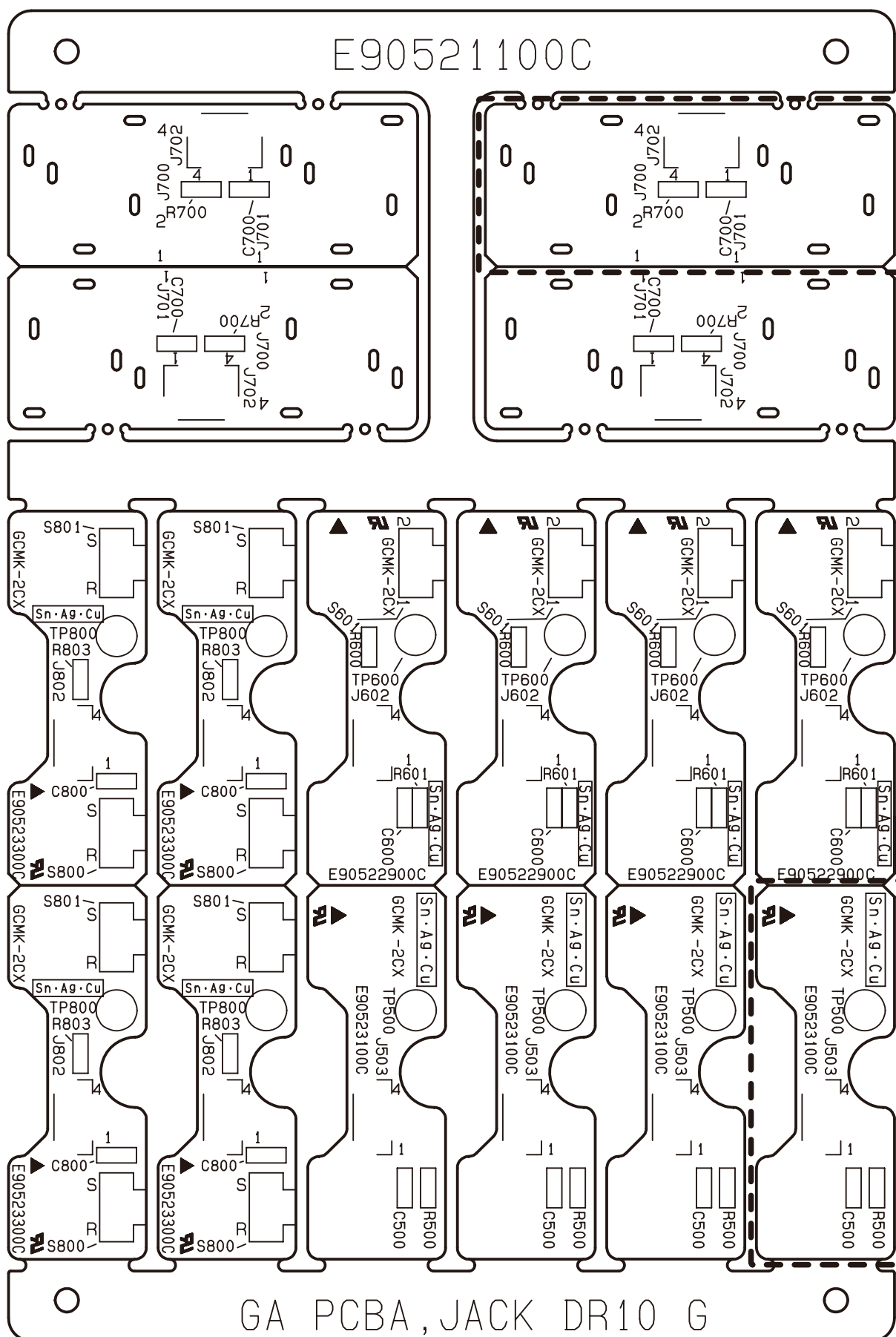
GA PCB,JACK DR10 G (Side A)



CAUTION The portion in the dashed box consists of service parts that need to be ordered using part numbers in Bold.

注意 破線部分は、太字品番で発注する補修部品になります。

GA PCB, JACK DR10 G (Side B)



CAUTION The portion in the dashed box consists of service parts that need to be ordered using part numbers in Bold.

注意 破線部分は、太字品番で発注する補修部品になります。

CAUTION Part with numbers in parentheses () cannot be ordered. If you want to order service parts, be sure to use "Child" part numbers (numbers in Bold), which refer to individual parts of a parent part.

注意 "()"付き品番は、発注できません。補修部品を発注する際は、太字品番で発注してください。

GATHER PCB, MAIN DR10 G

メイン基板

PARTS NO.	DESCRIPTION.	REMARKS
E95521800A	PCB ASSY,MAIN DR10X G	DR-10X
(E95521700A)	GATHER PCBA,MAIN DR10X G	DR-10X, [JPN], [KOR], [EUR], [UK], [AUS], [TM], [EX/BR],[EX/T/C]
(E95521754A)	GA PCBA,MAIN DR10X CHI G	DR-10X, [CHI]
E95520800A	PCB ASSY,MAIN DR10C G	DR-10C
(E95520700A)	GATHER PCBA,MAIN DR10C G	DR-10C

GATHER PCB, PANEL DR10 G

パネル基板

PARTS NO.	DESCRIPTION.	REMARKS
E95521000A	PCB ASSY,PANEL DR10 G	
(E95520900A)	GATHER PCBA,PANEL DR10 G	[JPN], [KOR], [EUR], [UK], [AUS], [TM], [EX/BR],[EX/T/C]
(E95520954A)	GA PCBA,PANEL DR10 CHI G	[CHI]

GA PCB, JACK DR10 G

パネル基板

PARTS NO.	DESCRIPTION.	REMARKS
E95521200A	PCBA,JACK 3.5MM DR10 G	DR-10CS
(E95521100A)	GATHER PCBA,JACK 3.5MM DR10 G	DR-10CS
E95523100A	PCBA,JACK MXLR4 DR10 G	DR-10CH
(E95523000A)	GA PCBA,JACK MXLR4 DR10 G	DR-10CH

6. Safety parts

安全部品

Items				
REF.NO.	PARTS NO.	DESCRIPTION.	QTY	REMARKS
F1	E0178564	FUSE,ERBRE2R00V G	1	⚠

7. Included Accessories

付属品

Included Accessories

REF.NO.	PARTS NO.	DESCRIPTION .	REMARKS
	D01236200A	OWNERS MNL,MULTI DR10X G	DR-10X, [JPN], [KOR], [EUR], [UK], [AUS], [TM], [EX/BR],[EX/T/C]
	D01236254A	OWNERS MNL,CHI DR10X G	DR-10X, [CHI]
	D01241500B	OWNERS MNL,MULTI DR10C G	DR-10C
	D01260700A	SHEET,MULTI DR10CH	DR-10CH
	E02304700A	CABLE ASSY,MICROUSB 05M G	
	E02286800A	CABLE ASSY,3.5MM DR10C G	DR-10C
	M03722300B	HOLDER,BELT DR10C G	DR-10C
	M03656800B	BAND,COMBINE 47 CIM G	DR-10C
	M03729300A	CALLYNG CASE,DR10C G	DR-10C

NOTES

- PC boards shown are viewed from parts side.
 - Parts marked with * require longer delivery time.
 - The parts with no reference number or no parts number in the exploded views are not supplied.
 - As regards the resistors and capacitors, refer to the circuit diagrams contained in this manual.
 - ⚠ Parts marked with this sign are safety critical components. They must be replaced with identical components - refer to the appropriate parts list and ensure exact replacement.
 - Parts of [] mark can be used only with the version designated.
- [JPN] : JAPAN [T/C] : U.S.A./CANADA [KOR] : KOREA
 [EUR] : EUROPE [UK] : U.K.
 [AUS] : AUSTRALIA [TM] : TAIWAN
 [CHI] : CHINA [EX/BR] : BRAZIL
 [EX/T/C] : U.S.A./CANADA/SOUTH AMERICA

注意

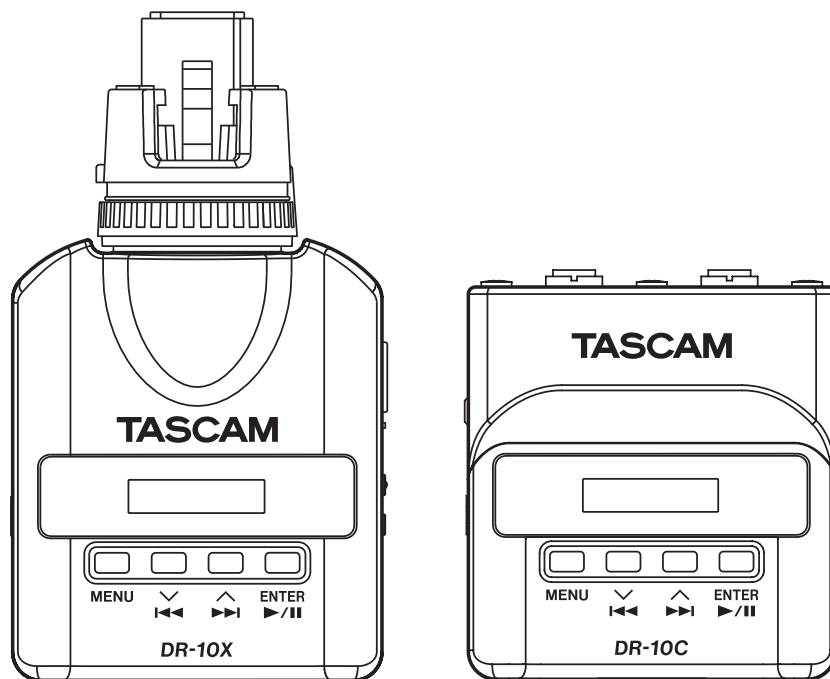
- プリント基板図は部品面を示しています。
- *印の部品は納期が若干かかります。あらかじめご了承ください。
- 分解図に部番のない部品および品番のない部品は供給できません。
- 標準の抵抗、コンデンサーは省略してあります。回路図を参照してください。
- ⚠ 印は安全重要部品です。交換する時は必ず指定の部品を使用してください。
- 仕向先
 [JPN] : JAPAN [T/C] : U.S.A./CANADA [KOR] : KOREA
 [EUR] : EUROPE [UK] : U.K.
 [AUS] : AUSTRALIA [TM] : TAIWAN
 [CHI] : CHINA [EX/BR] : BRAZIL
 [EX/T/C] : U.S.A./CANADA/SOUTH AMERICA

TASCAM

SERVICE MANUAL

DR-10X/10C

Compact Linear PCM Recorder



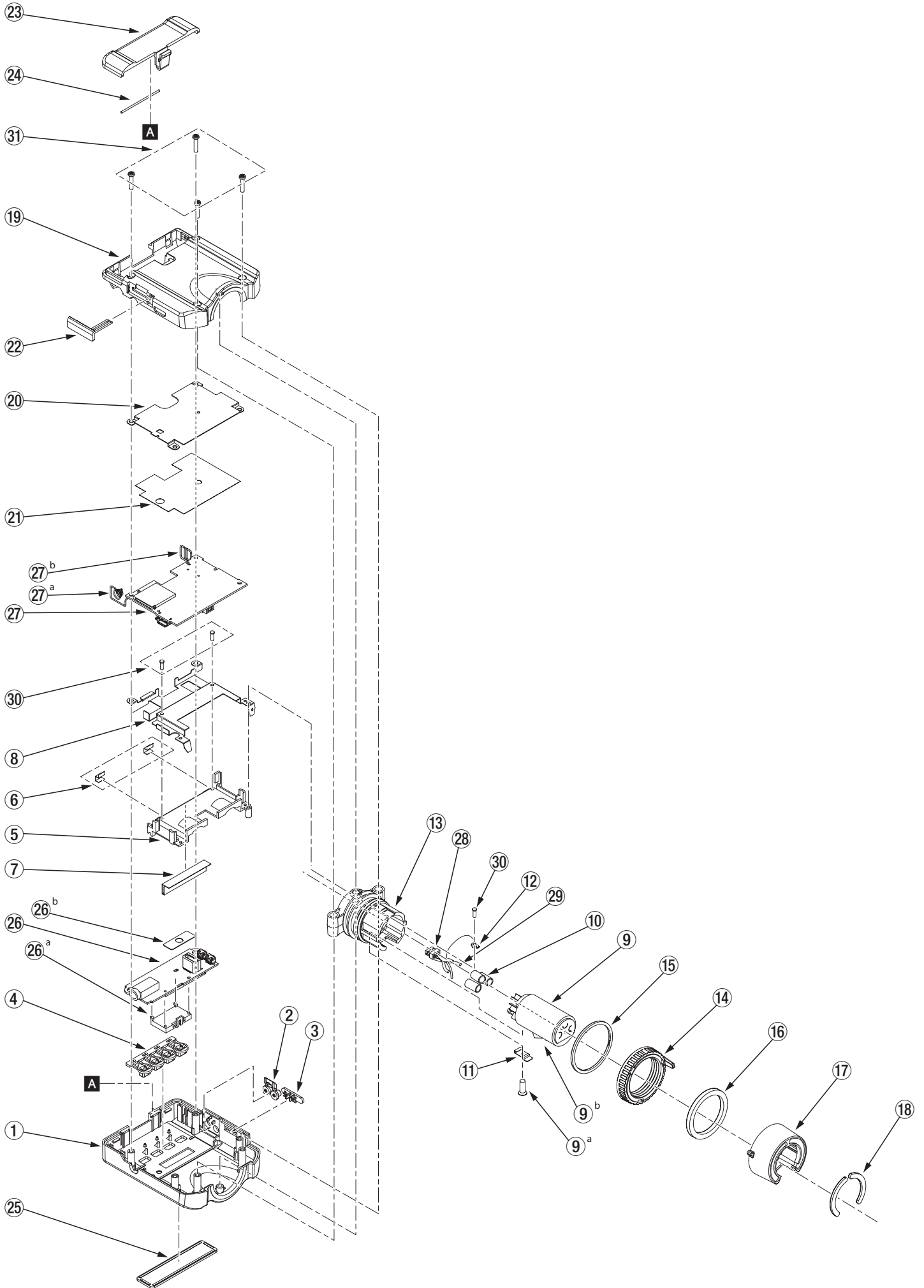
Exploded Views and Parts List

INSTRUCTIONS FOR SERVICE PERSONNEL

BEFORE RETURNING APPLIANCE TO THE CUSTOMER, MAKE LEAKAGE-CURRENT OR RESISTANCE MEASUREMENTS TO DETERMINE THAT EXPOSED PARTS ARE ACCEPTABLY INSULATED FROM THE SUPPLY CIRCUIT.

Exploded Views and Parts List (DR-10X)

分解図とパーツリスト (DR-10X)



CAUTION Part with numbers in parentheses () cannot be ordered.**注意** "()"付き品番は、発注できません。


REF.NO.	PARTS NO.	DESCRIPTION	QTY.	REMARKS
1	M03710400C	CASE, TOP DR10X G	1	
2	M03721700B	BUTTON, VOL DR10 G	1	
3	M03341100A	KNOB, SLIDE DR40 G	1	
4	M03721800A	BUTTON, TOP DR10 G	1	
5	M03721500C	ESCUTCHEON, INR DR10 G	1	
6	M03557200A	SHEET, GND CU 3.5*9*0.1 G	2	
7	M03748800A	SHEET, GND 15*28 G	1	
8	M03721600D	CHASSIS, CTR DR10 G	1	
9	E02301500A	CONN ASSY, SPF-13C G	1	
10	E01658800A	TUBE, 3.5*15MM BLK G	3	*1
11	M03752100A	SHEET, CU T01*4*16 G	1	
12	M03740500A	LUG TERMINAL, DR10X G	1	
13	M03711100C	BRACKET, SOCKET DR10X G	1	
14	M03711200B	RING, DR10X G	1	
15	M03714300A	RING, RED DR10X G	1	
16	M03760500A	CUSHION, 260*203 DR10X G	1	
17	M03711300C	BRACKET, MIC DR10X G	1	
18	M03711400A	CUSHION, MIC DR10X G	2	
19	M03711500B	CASE, BOTTOM DR10X G	1	
20	M03723000A	CHASSIS, BTM DR10C G	1	
21	M03776000A	SHEET, BTM DR10 G	1	
22	M03722000B	COVER, SD DR10 G	1	
23	M03721900C	COVER, BAT LID DR10 G	1	
24	M03723600A	SHAFT, COVER LID DR10 G	1	
25	M03722200C	WINDOW, DR10 G	1	
26	E95521000A	PCB ASSY, PANEL DR10 G	1	
26a	(M03722100B)	BRACKET, OLED DR10 G	1	
26b	(M02973400A)	SHEET, SLIDE 3POINT DR100	1	
27	E95521800A	PCB ASSY, MAIN DR10X G	1	
27a	(M03722400B)	CPRSN SPR, BAT P DR10 G	1	
27b	(M03722500B)	CPRSN SPR, BAT M DR10 G	1	
28	E02292000A	HARNESS ASSY, DR10X G	1	*1
29	E02302300A	WIRE, #28 L42 G	1	*1
30	B00326000A	SCREW, MPBR 1.4*4FZB G	2	
31	B00334100A	SCREW, MPPR 1.7*8 FZB G	4	

*1: These cannot be ordered individually, because these are assy.


CAUTION Part with numbers in parentheses () cannot be ordered.**注意** "("付き品番は、発注できません。

REF.NO.	PARTS NO.	DESCRIPTION	QTY.	REMARKS

NOTES

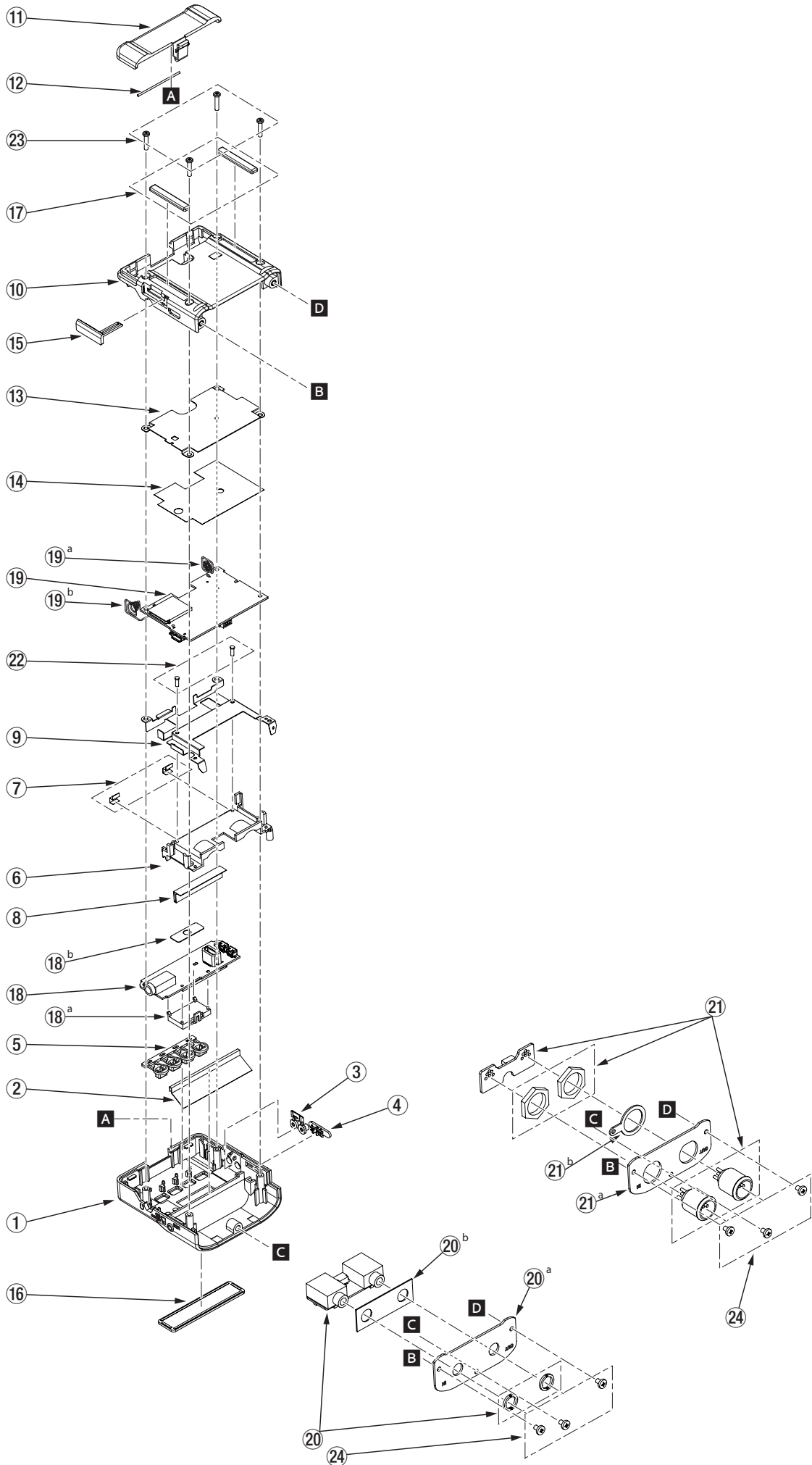
- PC boards shown are viewed from parts side.
- Parts marked with * require longer delivery time.
- The parts with no reference number or no parts number in the exploded views are not supplied.
- As regards the resistors and capacitors, refer to the circuit diagrams contained in this manual.
-  Parts marked with this sign are safety critical components. They must be replaced with identical components - refer to the appropriate parts list and ensure exact replacement.
- **Parts of [] mark can be used only with the version designated.**
 [JPN] : JAPAN [T/C] : U.S.A./CANADA [KOR] : KOREA
 [EUR] : EUROPE [UK] : U.K.
 [AUS] : AUSTRALIA [TM] : TAIWAN
 [CHI] : CHINA [EX/BR] : BRAZIL
 [EX/T/C] : U.S.A./CANADA/SOUTH AMERICA

注意

- プリント基板図は部品面を示しています。
- *印の部品は納期が若干かかります。あらかじめご了承ください。
- 分解図に部番のない部品および品番のない部品は供給できません。
- 標準の抵抗、コンデンサーは省略してあります。回路図を参照してください。
-  印は安全重要部品です。交換する時は必ず指定の部品を使用してください。
- 仕向先
 [JPN] : JAPAN [T/C] : U.S.A./CANADA [KOR] : KOREA
 [EUR] : EUROPE [UK] : U.K.
 [AUS] : AUSTRALIA [TM] : TAIWAN
 [CHI] : CHINA [EX/BR] : BRAZIL
 [EX/T/C] : U.S.A./CANADA/SOUTH AMERICA

Exploded Views and Parts List (DR-10C)

分解図とパーツリスト (DR-10C)




CAUTION Part with numbers in parentheses () cannot be ordered.**注意** "("付き品番は、発注できません。

REF.NO.	PARTS NO.	DESCRIPTION	QTY.	REMARKS
1	M03721300B	CASE, TOP DR10C G	1	
2	M03748700A	SHEET, GND 15*41.5 G	1	
3	M03721700B	BUTTON, VOL DR10 G	1	
4	M03341100A	KNOB, SLIDE DR40 G	1	
5	M03721800A	BUTTON, TOP DR10 G	1	
6	M03721500C	ESCUTCHEON, INR DR10 G	1	
7	M03557200A	SHEET, GND CU 3.5*9*0.1 G	2	
8	M03748800A	SHEET, GND 15*28 G	1	
9	M03721600D	CHASSIS, CTR DR10 G	1	
10	M03721400C	CASE, BTM DR10C G	1	
11	M03721900C	COVER, BAT LID DR10 G	1	
12	M03723600A	SHAFT, COVER LID DR10 G	1	
13	M03723000A	CHASSIS, BTM DR10C G	1	
14	M03776000A	SHEET, BTM DR10 G	1	
15	M03722000B	COVER, SD DR10 G	1	
16	M03722200C	WINDOW, DR10 G	1	
17	M03723200A	FOOT, RUBBER DR10 G	2	
18	E95521000A	PCB ASSY, PANEL DR10 G	1	
18a	M03722100B	BRACKET, OLED DR10 G	1	This part is included in E95521000A.
18b	M02973400A	SHEET, SLIDE 3POINT DR100	1	This part is included in E95521000A.
19	E95520800A	PCB ASSY, MAIN DR10C G	1	
19a	M03722400B	CPRSN SPR, BAT P DR10 G	1	This part is included in E95520800A.
19b	M03722500B	CPRSN SPR, BAT M DR10 G	1	This part is included in E95520800A.
20	(E95521200A)	PCBA, JACK 3.5MM DR10 G	1	DR-10CS Only, *2
20a	(M03722800C)	BRACKET, 3.5MM DR10C G	1	DR-10CS Only, This part is included in E95521200A.
20b	(M03767300A)	SHEET, GND 12*34 G	1	DR-10CS Only, This part is included in E95521200A.
21	(E95523100A)	PCBA, JACK MXLR4 DR10 G	1	DR-10CH Only, *3
21a	(M03722700B)	BRACKET, MXLR DR10C G	1	DR-10CH Only, This part is included in E95523100A.
21b	(M0375520)	LUG, GND-24	1	DR-10CH Only, This part is included in E95523100A.
22	B00326000A	SCREW, MPBR 1.4*4FZB G	2	
23	B00334100A	SCREW, MPPR 1.7*8 FZB G	4	
24	B00171203A	SCREW, BP 2*3 FZB G	3	
				*2: This PCBA is supplied by a PCBA below. E95521100A GA PCBA, JACK 3.5MM DR10 G
				*3: This PCBA is supplied by a PCBA below. E95523000A GA PCBA, JACK MXLR4 DR10 G

CAUTION Part with numbers in parentheses () cannot be ordered.**注意** "("付き品番は、発注できません。

REF.NO.	PARTS NO.	DESCRIPTION	QTY.	REMARKS

NOTES

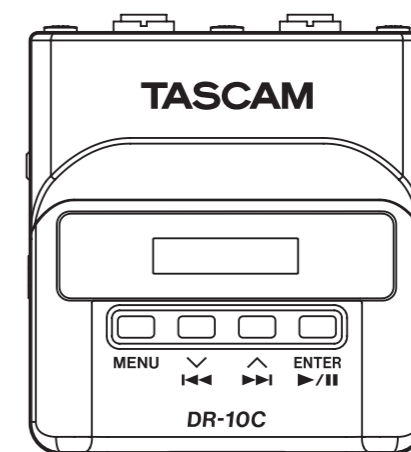
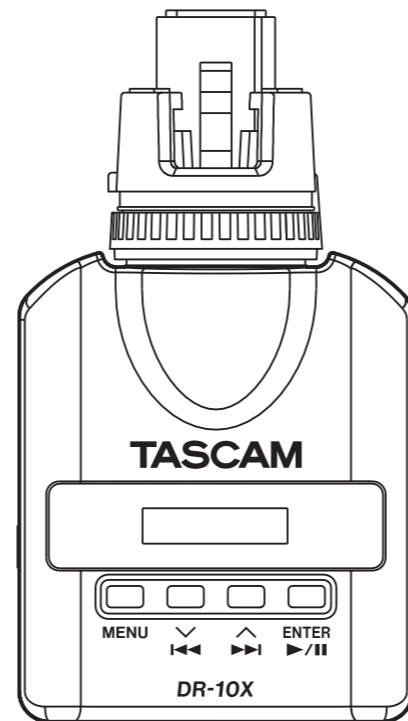
- PC boards shown are viewed from parts side.
- Parts marked with * require longer delivery time.
- The parts with no reference number or no parts number in the exploded views are not supplied.
- As regards the resistors and capacitors, refer to the circuit diagrams contained in this manual.
-  Parts marked with this sign are safety critical components. They must be replaced with identical components - refer to the appropriate parts list and ensure exact replacement.
- **Parts of [] mark can be used only with the version designated.**
 [JPN] : JAPAN [T/C] : U.S.A./CANADA [KOR] : KOREA
 [EUR] : EUROPE [UK] : U.K.
 [AUS] : AUSTRALIA [TM] : TAIWAN
 [CHI] : CHINA [EX/BR] : BRAZIL
 [EX/T/C] : U.S.A./CANADA/SOUTH AMERICA

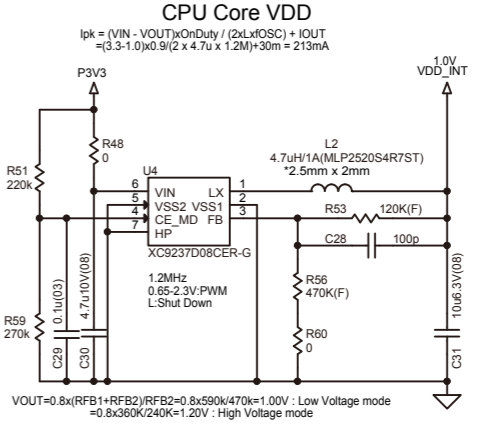
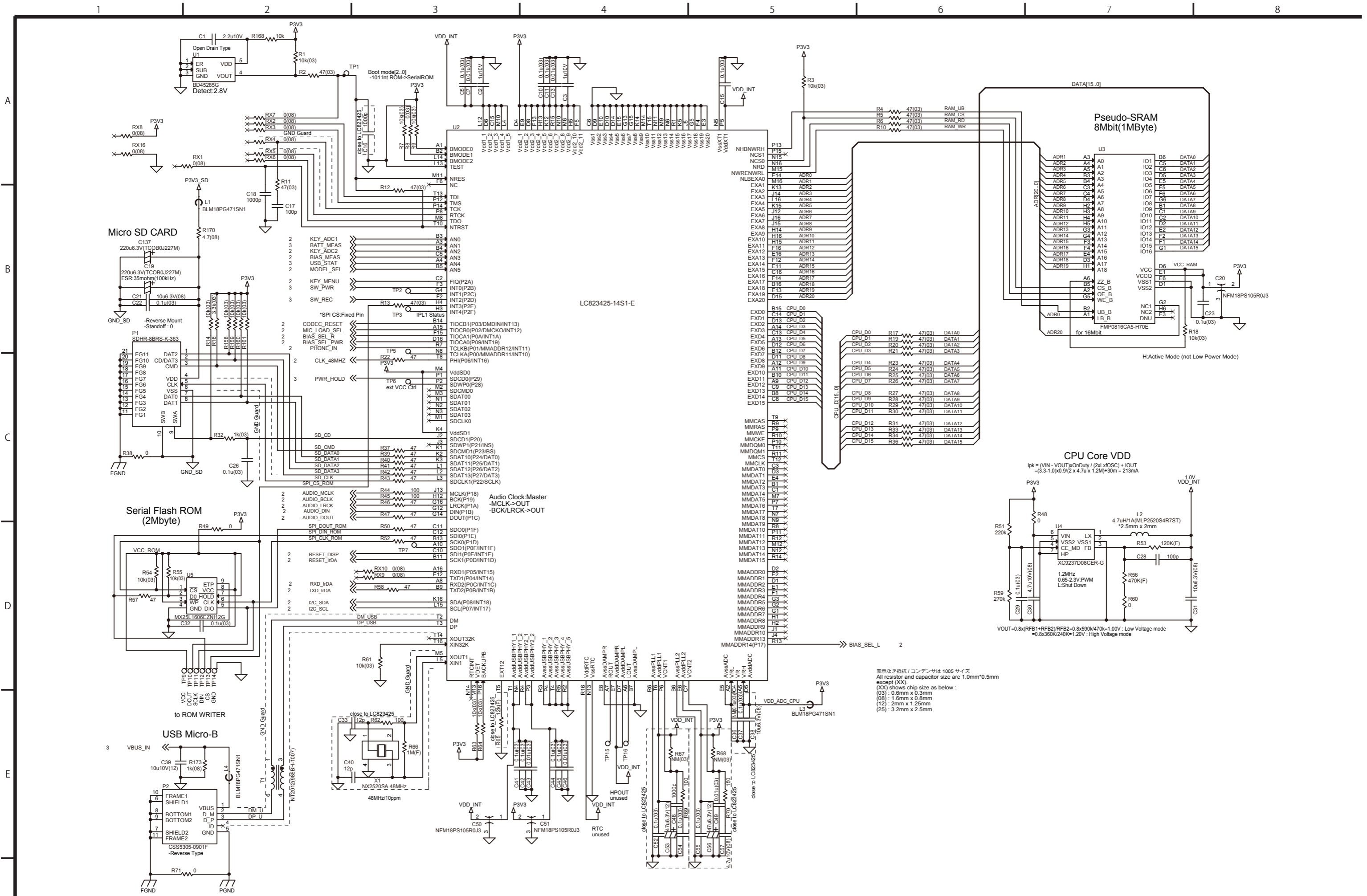
注意

- プリント基板図は部品面を示しています。
- *印の部品は納期が若干かかります。あらかじめご了承ください。
- 分解図に部番のない部品および品番のない部品は供給できません。
- 標準の抵抗、コンデンサーは省略してあります。回路図を参照してください。
-  印は安全重要部品です。交換する時は必ず指定の部品を使用してください。
- 仕向先
 [JPN] : JAPAN [T/C] : U.S.A./CANADA [KOR] : KOREA
 [EUR] : EUROPE [UK] : U.K.
 [AUS] : AUSTRALIA [TM] : TAIWAN
 [CHI] : CHINA [EX/BR] : BRAZIL
 [EX/T/C] : U.S.A./CANADA/SOUTH AMERICA

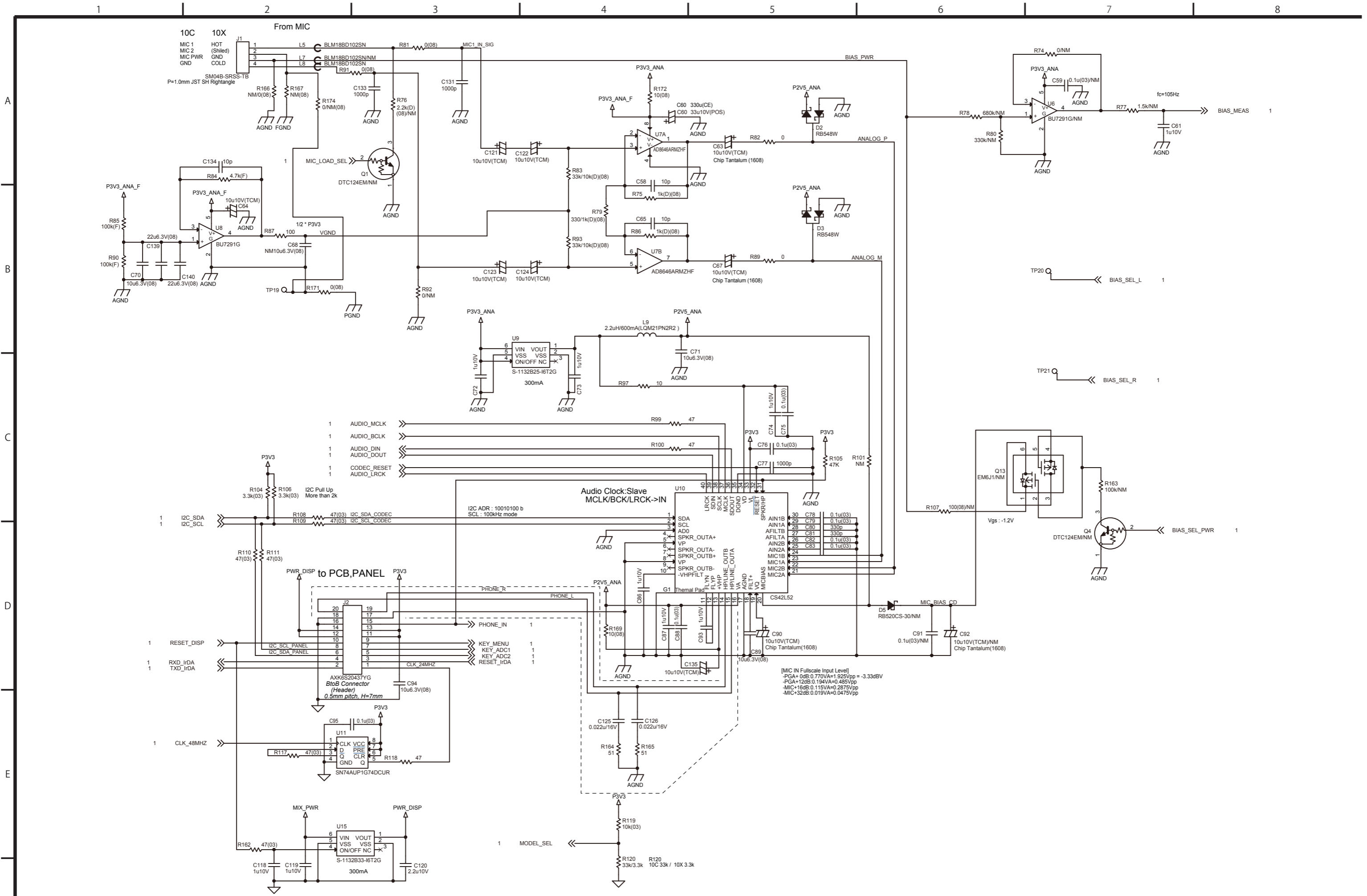
CONTENTS 目次

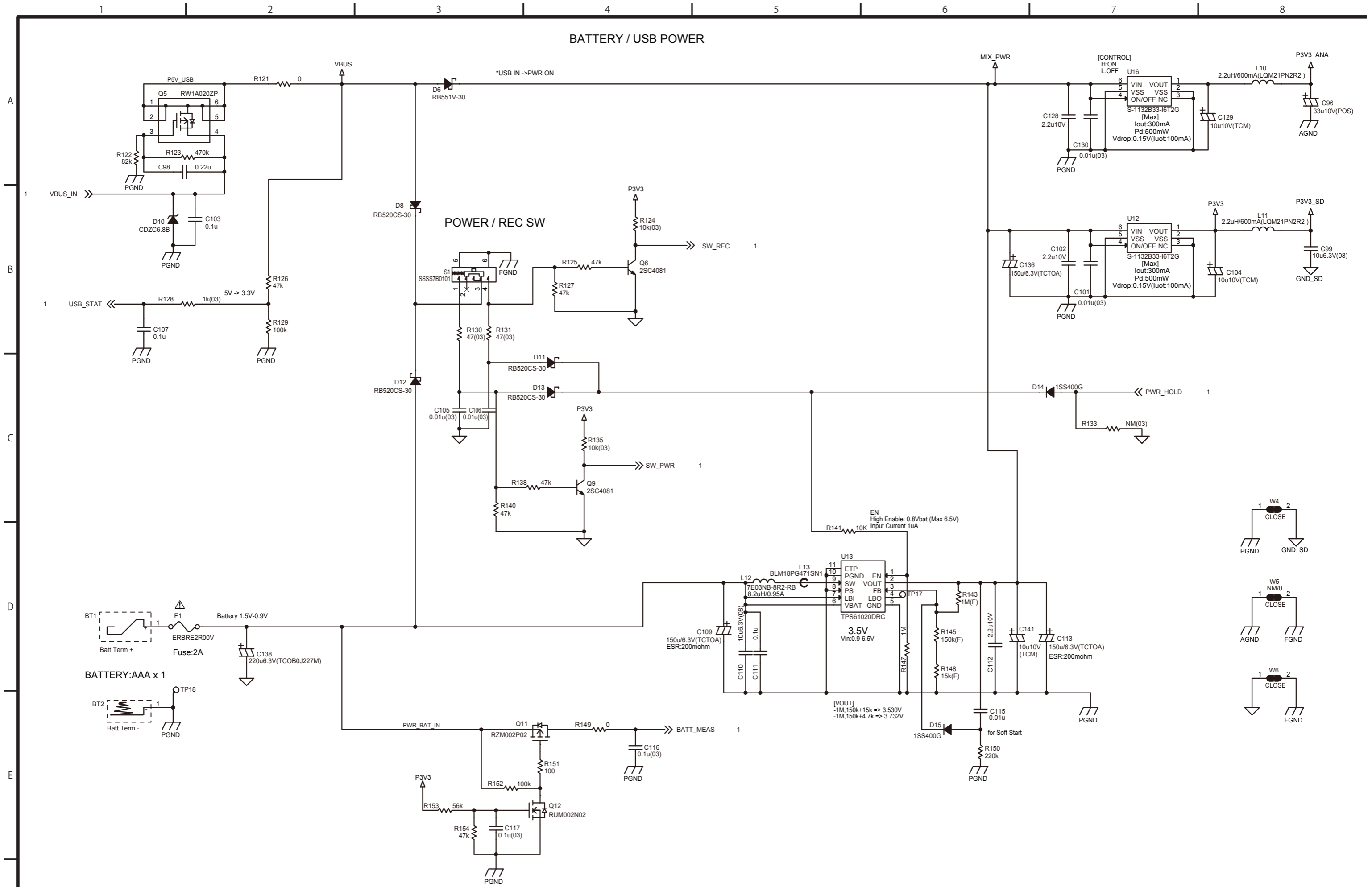
MAIN (1/3).....	2
MAIN (2/3).....	3
MAIN (3/3).....	4
PANEL.....	5
JACK.....	6

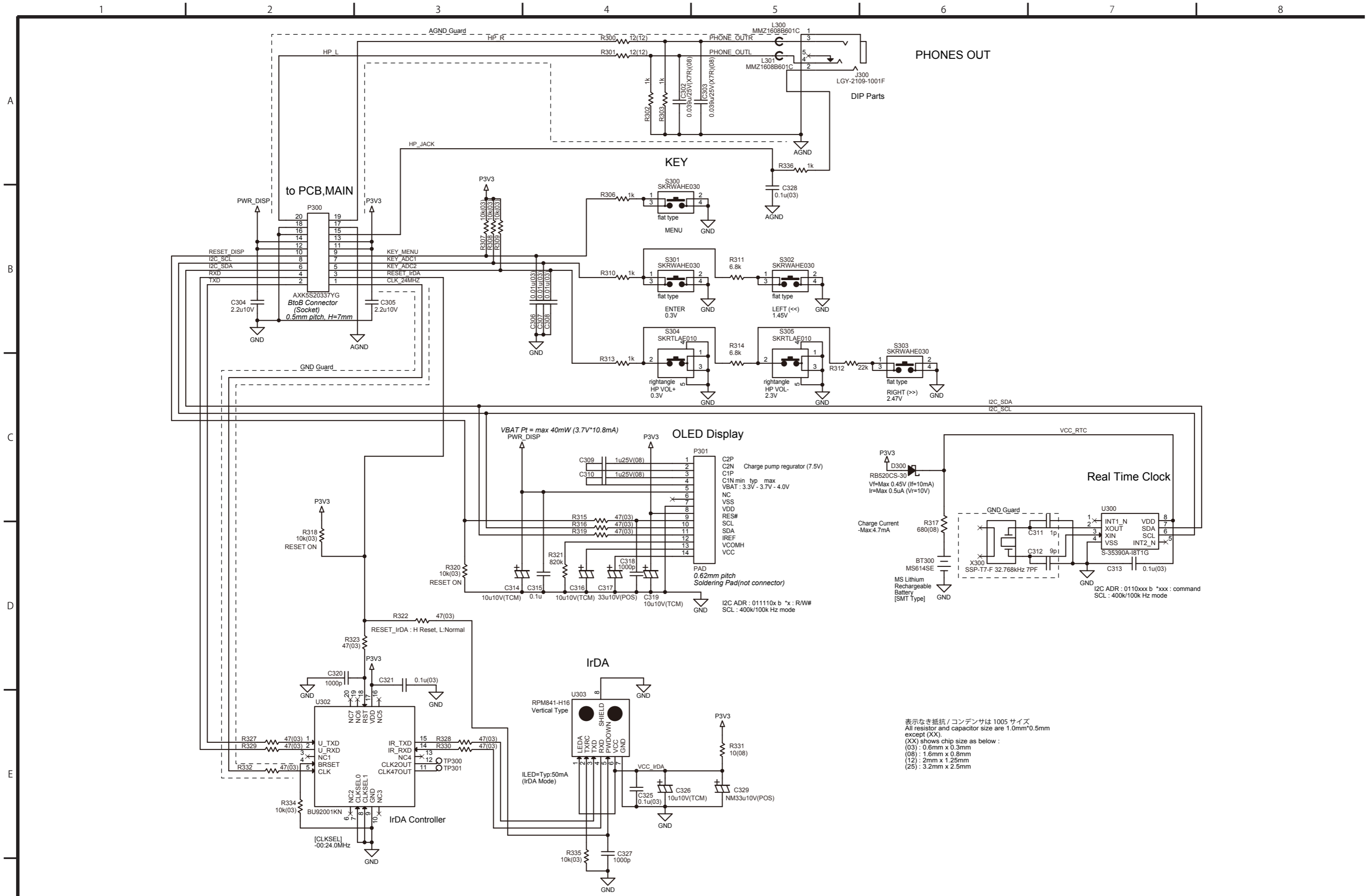




表示なき抵抗 / コンデンサは 1005 サイズ
 All resistor and capacitor size are 1.0mm*0.5mm except (XX).
 (03) : 0.6mm x 0.3mm
 (08) : 1.6mm x 0.8mm
 (12) : 2mm x 1.25mm
 (25) : 3.2mm x 2.5mm







表示なき抵抗 / コンデンサは 1005 サイズ
 All resistor and capacitor size are 1.0mm*0.5mm
 except (XX).
 (XX) shows chip size as below :
 (03) : 0.6mm x 0.3mm
 (08) : 1.6mm x 0.8mm
 (12) : 2mm x 1.25mm
 (25) : 3.2mm x 2.5mm

1 2 3 4 5 6 7 8

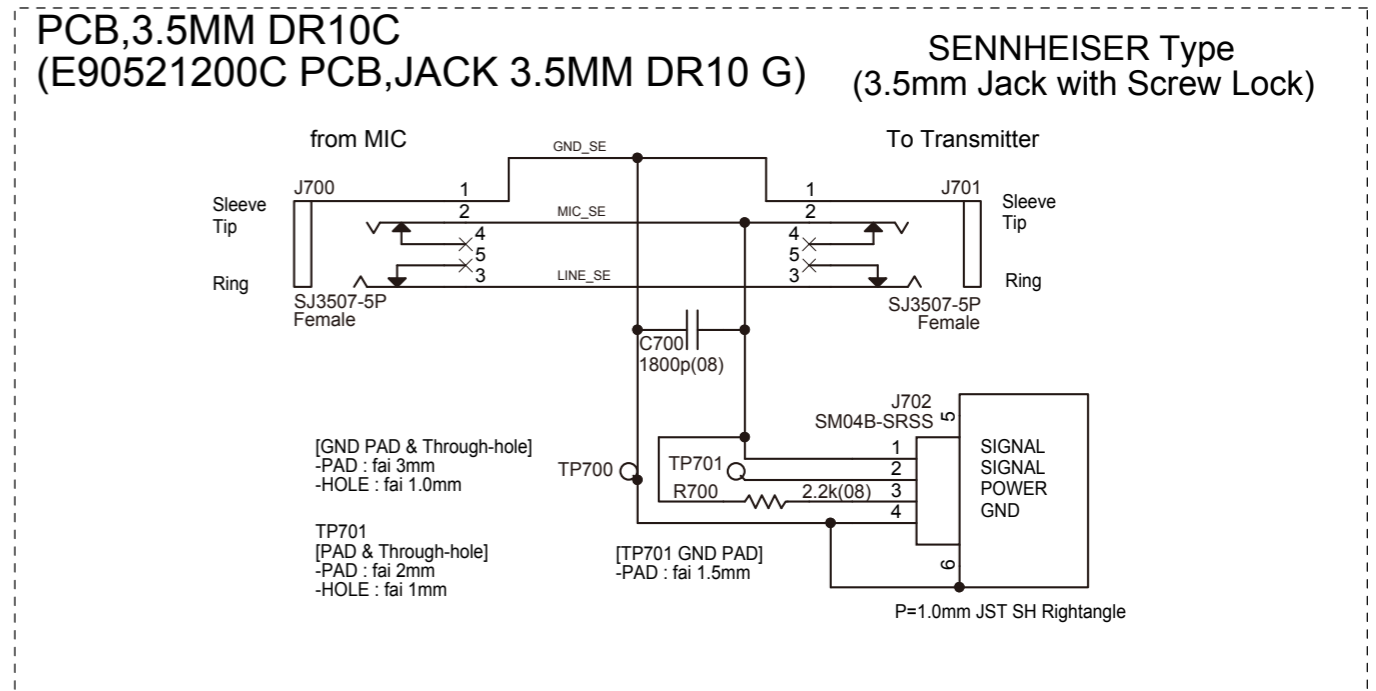
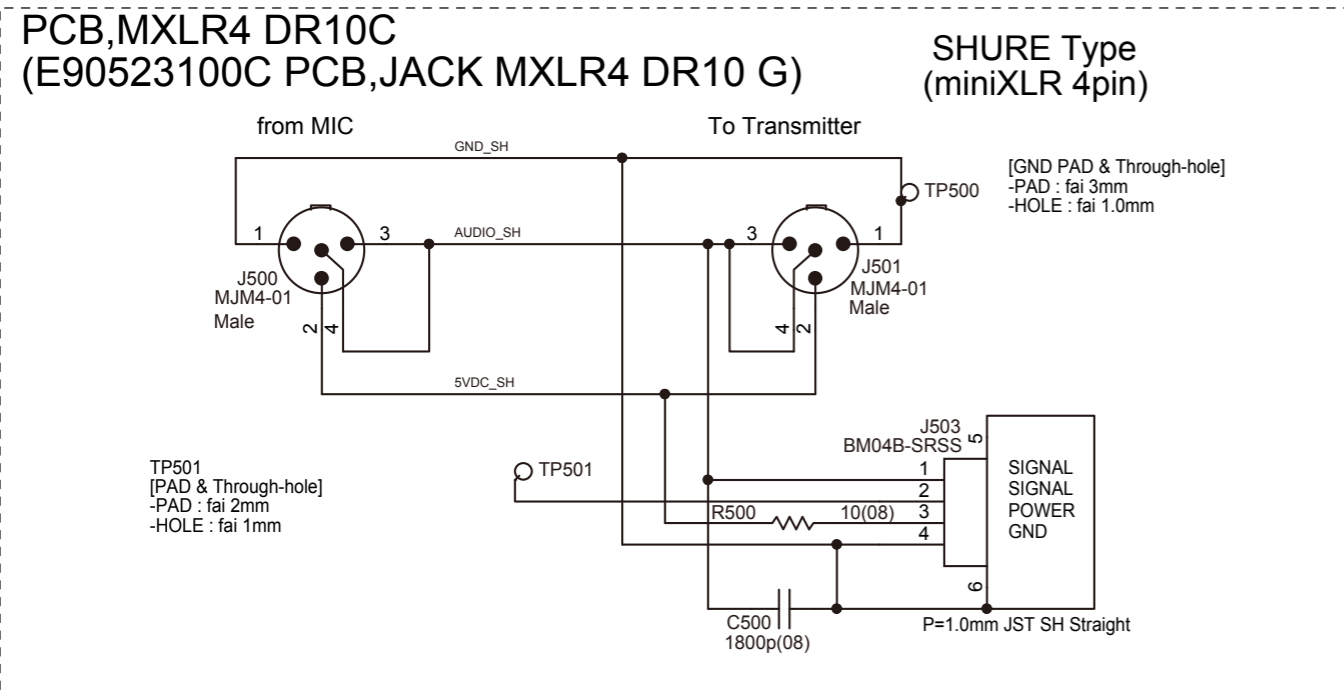
A

B

C

D

E



(XX) shows chip size as below :
(05) : 1.0mm x 0.5mm
(08) : 1.6mm x 0.8mm

Confirming the firmware version

Before starting firmware update procedures, check the firmware version of the DR-10C/DR-10X you are using.

1. Turn the main unit on.
2. Press the **MENU** button to open the MENU Screen.
3. Use the **◀◀**[∨] and **▶▶**[∧] buttons to select the **VERSION INFO** menu item and press the **▶**/||[ENTER] button to show the firmware version.
4. Check the firmware version shown here.

V1.01 0077

Updating is not necessary if the firmware version shown here is the same or newer than that of the firmware version you intend to use for the update.

Firmware update procedures

CAUTION

When updating the firmware, the unit should be using batteries with sufficient remaining power or operating on USB bus power supplied from a computer.

If battery power is low, conducting the update will not be possible.

1. Download the latest firmware from the TEAC Global Site (<http://teac-global.com/>). If the downloaded file is in ZIP format or another compressed file type, decompress it.
2. Load a microSD card to use for saving the firmware update file in the unit.
3. Use the included USB cable to connect the unit to a computer.

The screen shown below will appear. Use the **◀◀**[∨] and **▶▶**[∧] buttons to select the **STORAGE** item on the display, and press the **▶**/||[ENTER] button to confirm.

POWER/STORAGE

The computer should recognize the unit as an external drive (external storage).

4. Copy the downloaded firmware ("dr10.102" for V1.02) to the root directory of the DR-10.
5. After copying the file, use the proper procedures for the computer to unmount this unit before disconnecting the USB cable. If the unit is on, turn it off.
6. While pressing the **▶**/||[ENTER] and **PHONES** [+] buttons at the same time, turn the unit on.

If using USB bus power only (no batteries), while pressing the **▶**/||[ENTER] and **PHONES** [+] buttons at the same time, connect a USB cable to the computer and then the USB port on this unit.

The unit will start in update mode. After checking the microSD card, the following screen will appear.

SD mount OK

CAUTION

*If this screen does not appear, turn the unit off once and follow the procedures in step 6 again. Press and hold the **▶**/||[ENTER] and **PHONES** [+] buttons firmly until this screen appears.*

7. The following screen will appear when you release the buttons.

1.01> 1.02!?

The current version is shown on the left and the update version is shown on the right.

NOTE

- *If the microSD card does not contain an update file, the screen above will not appear and the unit will start in normal mode.*
 - *If the microSD card has multiple update files, only the first recognized file will be shown. Since selection of a different file is not possible, only save the file to be used for the update on the card.*
 - *The screen shown above is an example. The actual appearance will differ.*
8. Press the **▶**/||[ENTER] button to show a reconfirmation screen as follows.

1.01> 1.02??

9. Press the **◀◀**[∨] button to start the update.
10. When updating completes, **Update OK** will appear on the screen, and the unit will automatically restart in normal mode.
11. Refer to "Checking the firmware version" and confirm that the **VERSION INFO** menu item shows the latest firmware version.
This completes updating the unit.
12. Connect the unit to a computer by USB, and delete the firmware update file in the root directory of the unit.

Update information

We recommend that you always use the latest firmware version available for the unit. For information about the latest firmware, visit the TEAC Global Site (<http://teac-global.com/>).

New functions

V1.10 additions

- 44.1kHz, 16-bit and poly recording file formats can now also be selected in addition to the 48kHz, 24-bit and mono formats available before. These can be set using the new menu items shown below.

```
FS SAMPLE:44.1kHz,48kHz (default)
BIT LENGTH:16bit,24bit (default)
FILE TYPE:MONO (default),POLY
```

NOTE

You cannot set the FILE TYPE item to POLY and the DUAL REC MODE item to ON at the same time.

- If the remaining battery charge is low, the remaining open space on the microSD card is low or recording cannot be started, for example, the unit can now output a warning sound (beeping) from the headphone jack. This can be set using the new menu item shown below.

```
WARNING BEEP:OFF(default),ON
```

NOTE

For details, download the latest DR-10C or DR-10X Owner's Manual from the TEAC Global Site (<http://teac-global.com/>).

Maintenance items

V1.10 fix

- Operation stability has been improved.

V1.02 fix

- When the SYSTEM INIT menu item is executed (to initialize settings), the MODEL SELECT item setting is no longer reset.

This change only applies to the DR-10C.

NOTE

For details, download the latest DR-10C Owner's Manual from the TEAC Global Site (<http://teac-global.com/>).

Confirming the firmware version

Before starting firmware update procedures, check the firmware version of the DR-10C/DR-10X you are using.

1. Turn the main unit on.
2. Press the MENU button to open the MENU Screen.
3. Use the ◀◀[∨] and ▶▶[∧] buttons to select the VERSION INFO menu item and press the ▶/||[ENTER] button to show the firmware version.
4. Check the firmware version shown here.

```
V1.01 0077
```

Updating is not necessary if the firmware version shown here is the same or newer than that of the firmware version you intend to use for the update.

Firmware update procedures

CAUTION

When updating the firmware, the unit should be using batteries with sufficient remaining power or operating on USB bus power supplied from a computer.

If battery power is low, conducting the update will not be possible.

1. Download the latest firmware from the TEAC Global Site (<http://teac-global.com/>). If the downloaded file is in ZIP format or another compressed file type, decompress it.
2. Use the included USB cable to connect the unit to a computer.

The screen shown below will appear. Use the ◀◀[∨] and ▶▶[∧] buttons to select the STORAGE item on the display, and press the ▶/||[ENTER] button to confirm.

```
POWER/STORAGE
```

The computer should recognize the unit as an external drive (external storage).

3. Copy the downloaded firmware ("dr10.102" for V1.02) to the root directory of the DR-10.
4. After copying the file, use the proper procedures for the computer to unmount this unit before disconnecting the USB cable. If the unit is on, turn it off.

5. While pressing the ► / II [ENTER] and PHONES [+] buttons at the same time, turn the unit on.
If using USB bus power only (no batteries), while pressing the ► / II [ENTER] and PHONES [+] buttons at the same time, connect a USB cable to the computer and then the USB port on this unit.
The unit will start in update mode. After checking the microSD card, the following screen will appear.

SD mount OK

CAUTION

If this screen does not appear, turn the unit off once and follow the procedures in step 5 again. Press and hold the ► / II [ENTER] and PHONES [+] buttons firmly until this screen appears.

6. The following screen will appear when you release the buttons.

1.01> 1.02!?

The current version is shown on the left and the update version is shown on the right.

NOTE

- *If the microSD card does not contain an update file, the screen above will not appear and the unit will start in normal mode.*
 - *If the microSD card contains multiple update files, the first file recognized will be shown.*
 - *The screen shown above is an example. The actual appearance will differ.*
7. Press the ► / II [ENTER] button to show a reconfirmation screen as follows.

1.01> 1.02??

8. Press the I◀◀ [✓] button to start the update.
9. When updating completes, Update OK will appear on the screen, and the unit will automatically restart in normal mode.
10. Refer to "Checking the firmware version" and confirm that the VERSION INFO menu item shows the latest firmware version.
This completes updating the unit.
11. Connect the unit to a computer by USB, and delete the firmware update file in the root directory of the unit.

Update information

We recommend that you always use the latest firmware version available for the unit. For information about the latest firmware, visit the TEAC Global Site (<http://teac-global.com/>).

New functions

V1.10 additions

- 44.1kHz, 16-bit and poly recording file formats can now also be selected in addition to the 48kHz, 24-bit and mono formats available before. These can be set using the new menu items shown below.

```
FS SAMPLE:44.1kHz,48kHz (default)
BIT LENGTH:16bit,24bit (default)
FILE TYPE:MONO (default),POLY
```

NOTE

Dual recording is not possible when recording poly files (only one file can be recorded). Poly file recording is not possible when dual recording (only mono files can be recorded).

- If the remaining battery charge is low, the remaining open space on the microSD card is low or recording cannot be started, for example, the unit can now output a warning sound (beeping) from the headphone jack. This can be set using the new menu item shown below.

```
WARNING BEEP:OFF(default),ON
```

NOTE

For details, download the latest DR-10C or DR-10X Owner's Manual from the TEAC Global Site (<http://teac-global.com/>).

Maintenance items

V1.10 fix

- Operation stability has been improved.

V1.02 fix

- When the SYSTEM INIT menu item is executed (to initialize settings), the MODEL SELECT item setting is no longer reset.

This change only applies to the DR-10C.

NOTE

For details, download the latest DR-10C Owner's Manual from the TEAC Global Site (<http://teac-global.com/>).

Confirming the firmware version

Before starting firmware update procedures, check the firmware version of the DR-10C/DR-10X you are using.

1. Turn the main unit on.
2. Press the MENU button to open the MENU Screen.
3. Use the ◀◀[∨] and ▶▶[∧] buttons to select the VERSION INFO menu item and press the ▶/■[ENTER] button to show the firmware version.
4. Check the firmware version shown here.

```
V1.01 0077
```

Updating is not necessary if the firmware version shown here is the same or newer than that of the firmware version you intend to use for the update.

Firmware update procedures

CAUTION

When updating the firmware, the unit should be using batteries with sufficient remaining power or operating on USB bus power supplied from a computer.

If battery power is low, conducting the update will not be possible.

1. Download the latest firmware from the TEAC Global Site (<http://teac-global.com/>). If the downloaded file is in ZIP format or another compressed file type, decompress it.
2. Use the included USB cable to connect the unit to a computer.

The screen shown below will appear. Use the ◀◀[∨] and ▶▶[∧] buttons to select the STORAGE item on the display, and press the ▶/■[ENTER] button to confirm.

```
POWER/STORAGE
```

The computer should recognize the unit as an external drive (external storage).

3. Copy the downloaded firmware ("dr10.102" for V1.02) to the root directory of the DR-10.
4. After copying the file, use the proper procedures for the computer to unmount this unit before disconnecting the USB cable. If the unit is on, turn it off.

5. While pressing the ► / II [ENTER] and PHONES [+] buttons at the same time, turn the unit on.
If using USB bus power only (no batteries), while pressing the ► / II [ENTER] and PHONES [+] buttons at the same time, connect a USB cable to the computer and then the USB port on this unit.
The unit will start in update mode. After checking the microSD card, the following screen will appear.

SD mount OK

CAUTION

If this screen does not appear, turn the unit off once and follow the procedures in step 5 again. Press and hold the ► / II [ENTER] and PHONES [+] buttons firmly until this screen appears.

6. The following screen will appear when you release the buttons.

1.01> 1.02!?

The current version is shown on the left and the update version is shown on the right.

NOTE

- *If the microSD card does not contain an update file, the screen above will not appear and the unit will start in normal mode.*
 - *If the microSD card contains multiple update files, the first file recognized will be shown.*
 - *The screen shown above is an example. The actual appearance will differ.*
7. Press the ► / II [ENTER] button to show a reconfirmation screen as follows.

1.01> 1.02??

8. Press the I◀◀ [✓] button to start the update.
9. When updating completes, Update OK will appear on the screen, and the unit will automatically restart in normal mode.
10. Refer to “Checking the firmware version” and confirm that the VERSION INFO menu item shows the latest firmware version.
This completes updating the unit.
11. Connect the unit to a computer by USB, and delete the firmware update file in the root directory of the unit.

TASCAM DR-10C/DR-10X Release Notes

Update information

We recommend that you always use the latest firmware version available for the unit. For information about the latest firmware, visit the TEAC Global Site (<http://teac-global.com/>).

Maintenance item

V1.02 fix

- When the **SYSTEM INIT** (settings initialization) menu item is executed, the **MODEL SELECT** setting is no longer initialized.
This change only applies to the DR-10C.

NOTE

For details, refer to Revision C of the DR-10C operation manual (D01241500C).

Confirming the firmware version

Before starting firmware update procedures, check the firmware version of the DR-10C/DR-10X you are using.

- Turn the main unit on.
- Press the **MENU** button to open the **MENU** Screen.
- Use the **◀◀[▽]** and **▶▶[△]** buttons to select the **VERSION INFO** menu item and press the **▶/II[ENTER]** button to show the firmware version.
- Check the firmware version shown here.

V1.01 0077

Updating is not necessary if the firmware version shown here is the same or newer than that of the firmware version you intend to use for the update.

Firmware update procedures

CAUTION

When updating the firmware, the unit should be using batteries with sufficient remaining power or operating on USB bus power supplied from a computer.

If battery power is low, conducting the update will not be possible.

- Download the latest firmware from the TEAC Global Site (<http://teac-global.com/>). If the downloaded file is in ZIP format or another compressed file type, decompress it.
- Use the included USB cable to connect the unit to a computer.

The screen shown below will appear. Use the **◀◀[▽]** and **▶▶[△]** buttons to select the **STORAGE** item on the display, and press the **▶/II[ENTER]** button to confirm.

POWER/STORAGE

The computer should recognize the unit as an external drive (external storage).

- Copy the downloaded firmware ("dr10.102" for V1.02) to the root directory of the DR-10.
- After copying the file, use the proper procedures for the computer to unmount this unit before disconnecting the USB cable. If the unit is on, turn it off.
- While pressing the **▶/II[ENTER]** and **PHONES [+]** buttons at the same time, turn the unit on.

If using USB bus power only (no batteries), while pressing the **▶/II[ENTER]** and **PHONES [+]** buttons at the same time, connect a USB cable to the computer and then the USB port on this unit.

The unit will start in update mode. After checking the microSD card, the following screen will appear.

SD mount OK

CAUTION

If this screen does not appear, turn the unit off once and follow the procedures in step 5 again. Press and hold the **▶/II[ENTER]** and **PHONES [+]** buttons firmly until this screen appears.

- The following screen will appear when you release the buttons.

1.01> 1.02!?

The current version is shown on the left and the update version is shown on the right.

NOTE

- If the microSD card does not contain an update file, the screen above will not appear and the unit will start in normal mode.
 - If the microSD card contains multiple update files, the first file recognized will be shown.
 - The screen shown above is an example. The actual appearance will differ.
- Press the **▶/II[ENTER]** button to show a reconfirmation screen as follows.

1.01> 1.02??

- Press the **◀◀[▽]** button to start the update.
- When updating completes, **Update OK** will appear on the screen, and the unit will automatically restart in normal mode.
- Refer to "Checking the firmware version" and confirm that the **VERSION INFO** menu item shows the latest firmware version.
This completes updating the unit.
- Connect the unit to a computer by USB, and delete the firmware update file in the root directory of the unit.