

TEAC®



SERVICE MANUAL

A-880

DC Integrated Stereo Amplifier

SPECIFICATIONS

Output Power: 50 watts + 50 watts *¹ min. RMS, at 8 ohms from 40 Hz to 20 kHz, with no more than 0.5% total harmonic distortion. 80 W + 80 W (Dynamic Power) 55 W + 55 W (Both channels, 8 ohms, 40 Hz–20 kHz, 0.5% THD)

Input Sensitivity/ Impedance: PHONO: 3 mV/47 k ohms
TUNER, CD, AUX: 190 mV/42 k ohms
TAPE PLAY 1, 2: 190 mV/42 k ohms

Output Voltage/ Impedance: TAPE REC OUT: 180 mV/1 k ohms

Damping Factor: more than 15

Frequency Response: PHONO (RIAA): 30 Hz–15 kHz ±0.4 dB
TUNER, CD, AUX: 20 Hz–40 kHz ± $\frac{1}{2}$ dB
TAPE PLAY 1, 2: 20 Hz–40 kHz ± $\frac{1}{2}$ dB

Graphic Equalizer: Number of Bands: 5
Center Frequency: 63, 250, 1k, 4k, 16 k Hz
Boost/Cut Range: ±8 dB

Total Harmonic Distortion: 0.09% (At –3 dB power output, 8 ohms, 1 kHz)

Intermodulation Distortion: 0.2% (At –3 dB power output, 8 ohms, 1 kHz)

Signal-to-Noise Ratio: (IHF A Network) PHONO: 72 dB
TUNER, CD, AUX: 90 dB
TAPE PLAY 1, 2: 90 dB

Power Requirements: 110–120/200–220/230–240 V AC, 50/60 Hz, 270 W (General export model)
120 V AC, 60 Hz 180 W (U.S.A./Canada)
220 V AC, 50 Hz 270 W (Europe)
240 V AC, 50 Hz 270 W (Australia)

Dimensions (W x H x D): 435 x 110 x 292 mm
(17-1/8" x 4-5/16" x 11-1/2")

Weight: 6.5 kg (14-5/16 lbs.) net

- *¹ Measured pursuant to the Federal Trade Commission's Trade Regulation Rule on Power Output Claims for Amplifier.
• Improvements may result in specification or feature changes without notice.

CAUTION

△ Parts marked with this sign are safety critical components. They must always be replaced with identical components – refer to the appropriate parts list and ensure exact replacement.

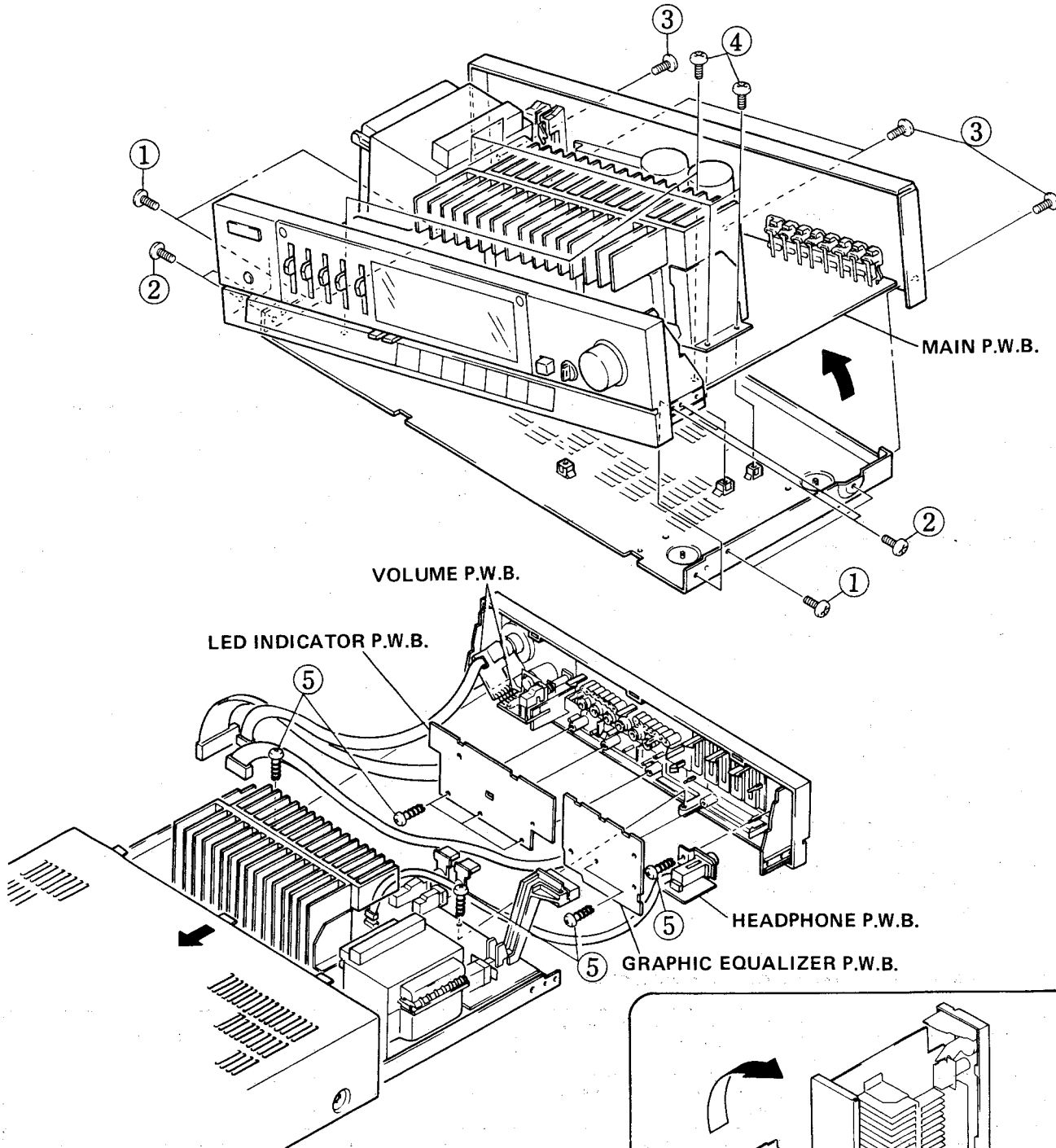
SERVICE POINT

- **As this unit uses a large capacity power supply, be careful of the following points when checking and repairing.**
 - (1) To check and repair the printed wiring boards, be sure to cut off the power and pull out the power cord. Remove the bottom plate and discharge the power capacitors by touching it with a resistor of approx. 10 ohms, 5 watts capacity at the positions C807 and C808.
 - (2) This amplifier employs a heat sink and so when conducting a continuity check, the unit should be placed horizontally or stood on its transformer end.

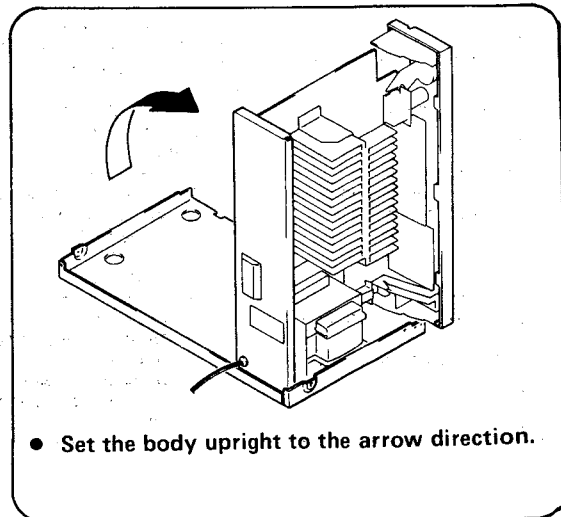
- **Parts installation method**

Great care is taken in installing parts to improve the safety of products. For example, parts are covered with tubes, or they are kept away from the printed wiring board surface. Be sure to maintain the previous conditions after replacing parts for repair.

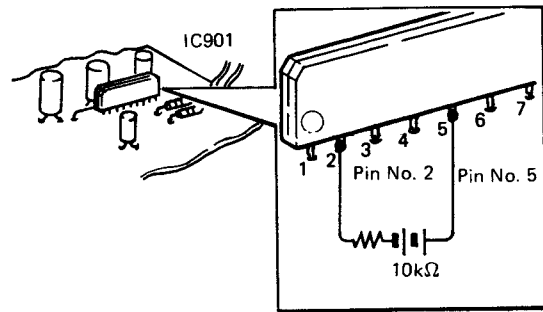
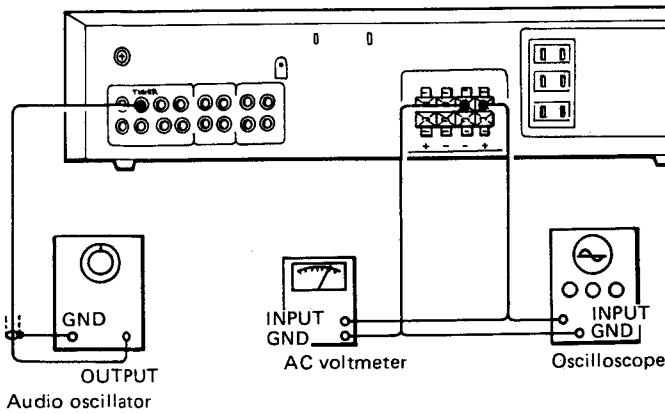
CIRCUIT BOARD CHECKING AND ESCUTCHEON ASS'Y DISASSEMBLY PROCEDURES



- ① Screw, bind head 4φx10 (x4)
- ② Screw, bind head 3φx8 (x4)
- ③ Screw, bind head 3φx8 (x4)
- ④ Screw, bind head 3φx12 (x6)
- ⑤ Screw, tapping bind head 3φx10 (x7)



CHECKING THE OPERATION OF THE PROTECTION CIRCUIT



When the output circuit is repaired by replacing the output transistors, etc., perform an operation check on the ASO (Area of Safe Operation) detection circuit for the output transistors and the speaker protection circuit.

1. Operation check of the ASO detection circuit for the output transistors

Connect the audio oscillator to the TUNER IN terminals with the speaker terminals unloaded (speaker: disconnect). Set the frequency of the input signal at 1 kHz and adjust the level of the input signal so that the voltage at the speaker terminals is approx. 5 V rms.

Under these conditions, short-circuit the speaker terminals of the channel to which the input signal is applied using a lead wire, etc. If this short-circuit makes the ASO detection circuit operate, no output appears at the speaker terminals even if the lead wire used for short-circuiting is removed.

Next, turn off the power switch and, after approx. 10 sec., turn the power switch on again. When output comes out of the speaker terminals, this indicates that the ASO detection circuit is operating normally.

2. Operation check of the speaker protection circuit

Make sure that the relay operates (a click sound is heard) approx. 7 – 10 seconds after the power switch is turned on with the speaker terminals unloaded (speaker: disconnect).

Next, when a resistor with a resistance of approximately 10 k ohms and two 1.5 V dry batteries are connected in series across pins 5 and 2 of main power printed wiring board IC901, the relay turns off within 1 sec. Next, when power is turned on again after at least 10 seconds have passed, the relay takes 7 – 10 seconds to start activating. Next, change the polarities of the dry batteries and carry out the above mentioned operation to check the operation of the relay.

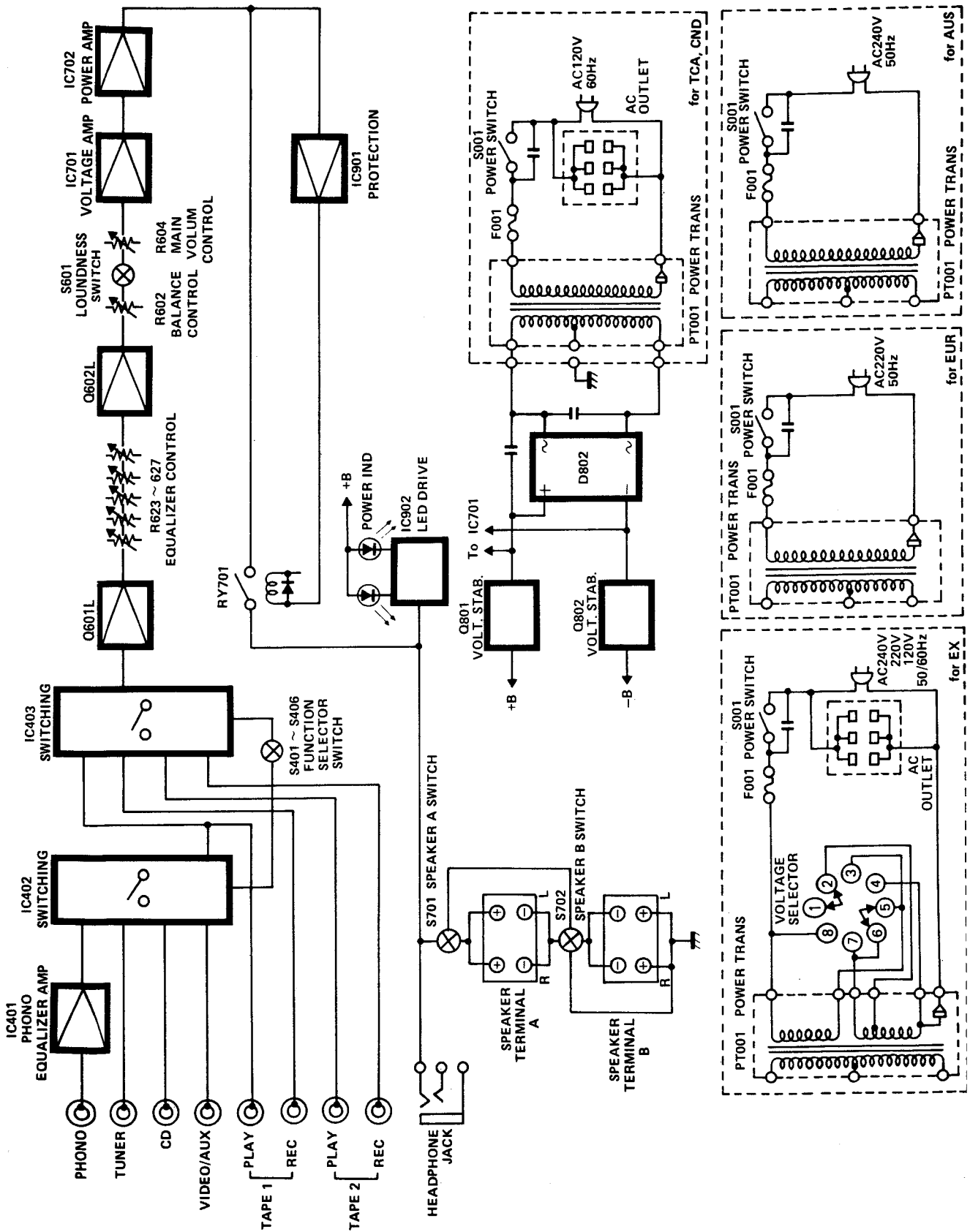
If the relay is energized with this operation, it means that the speaker protection circuits are functioning normally.

When conducting this operational check, take care not to create shortcircuits with parts close at hand.

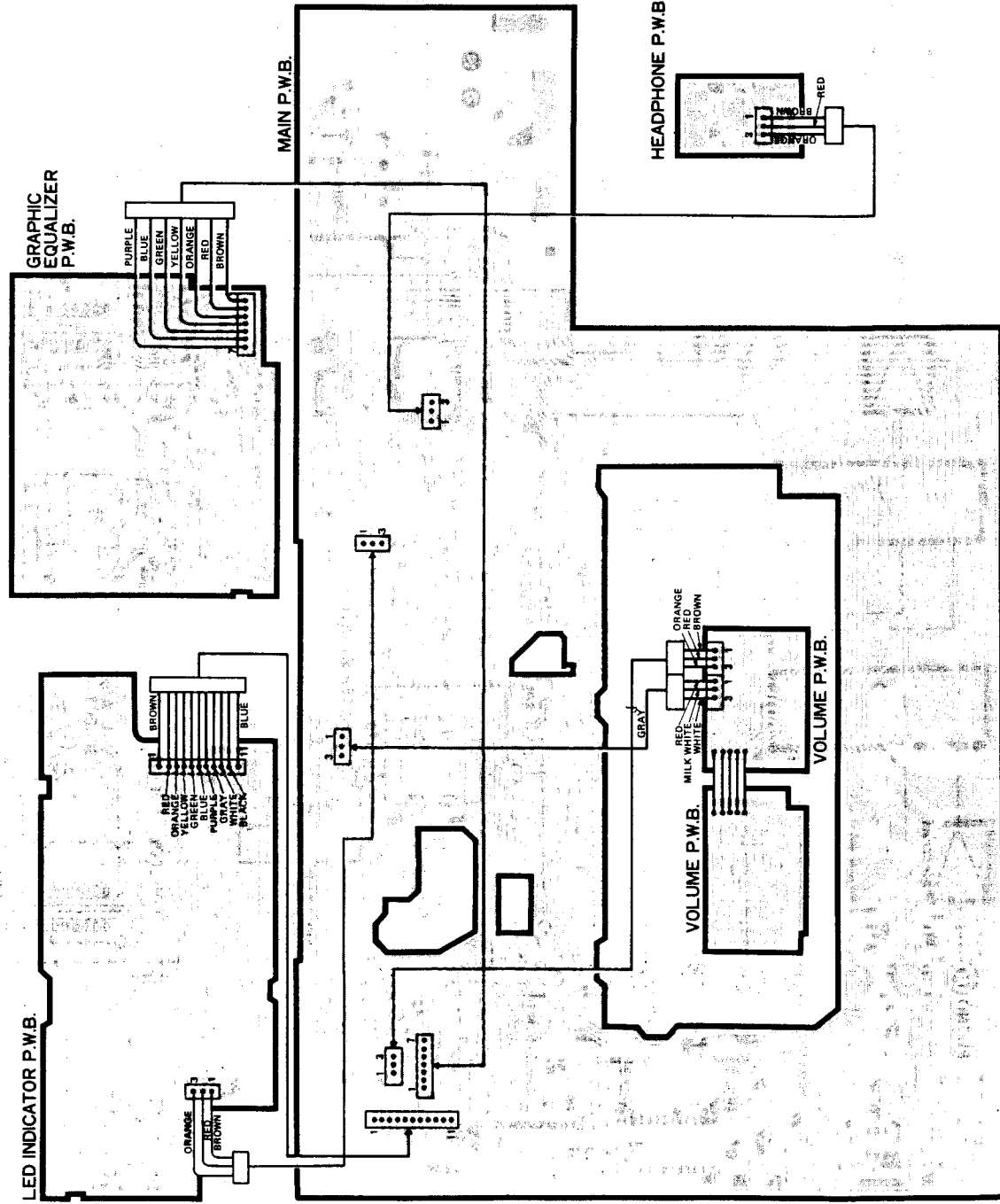
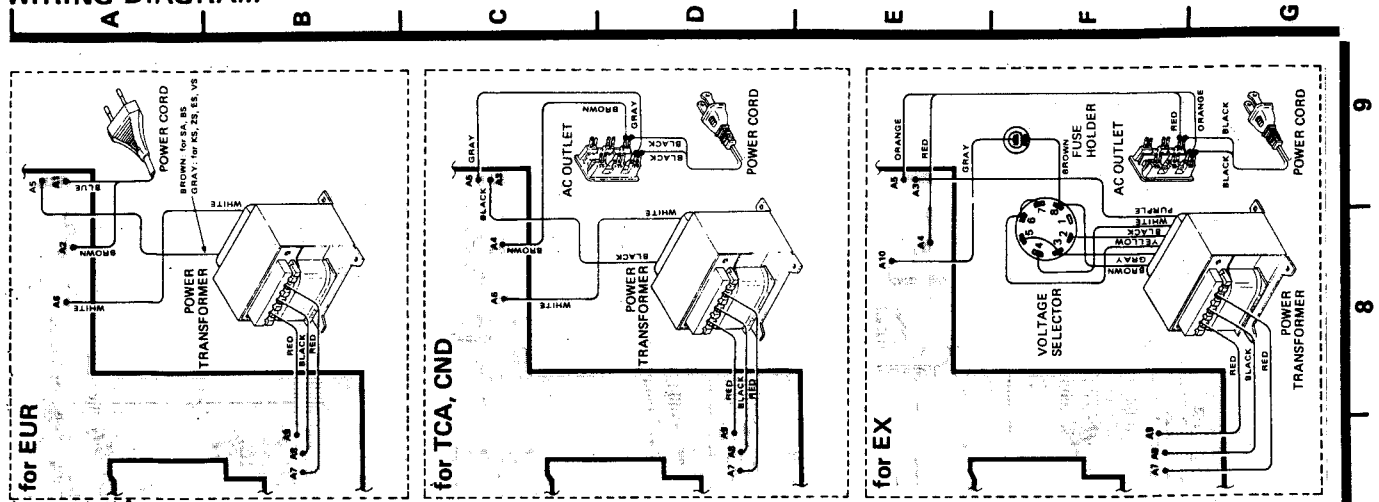
• Phenomena and remedy when the protection circuit operates

Type of protection circuit	Phenomenon when the protection circuit operates	Cause	Remedy
1 Muting circuit	No sound comes out about 7 – 10 sec. after the power switch is turned ON.	—————	Normal
2 Protection circuit of the output transistors	1. No sound comes out. 2. When the power switch is turned ON, the relay becomes ON, then OFF when the signal is applied.	Short circuit of speaker output terminal.	Turn off the power switch, check whether the speaker terminal is short circuited or not, and turn ON again.
3 Speaker protection circuit (DC voltage detection/protection circuit)	1. No sound comes out. 2. Neutral point voltage is more than ± 2 V. 3. After the power switch is turned ON, relay doesn't turn ON.	Power amplifier faulty, etc.	Repair faulty parts in power amplifier.

BLOCK DIAGRAM

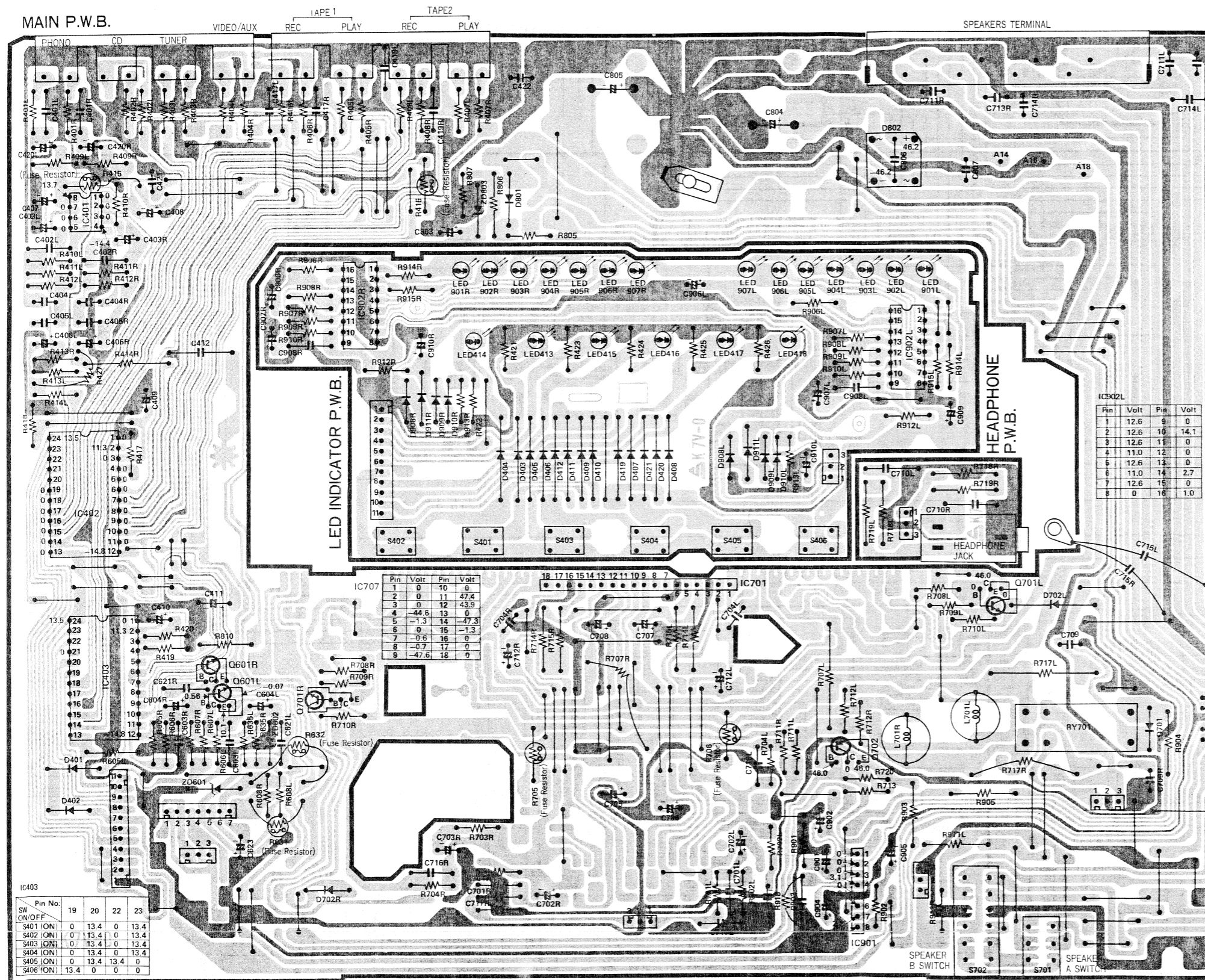


WIRING DIAGRAM



PRINTED WIRING BOARD

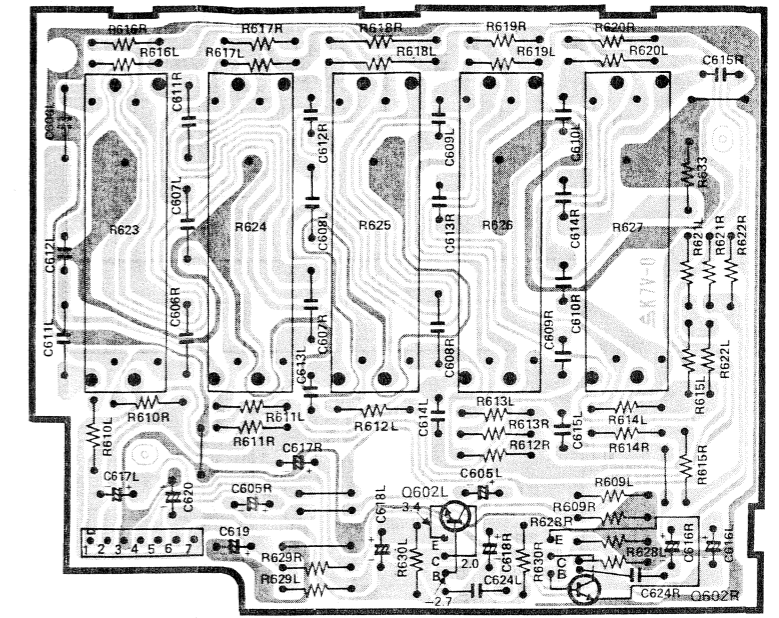
[] : Earth, [] : Other



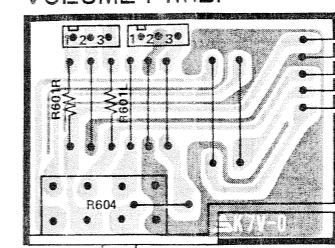
Pin No.	19	20	22	23
SW ON/OFF	0	13.4	0	13.4
S401 (ON)	0	13.4	0	13.4
S402 (ON)	0	13.4	0	13.4
S403 (ON)	0	13.4	0	13.4
S404 (ON)	0	13.4	0	13.4
S405 (ON)	0	13.4	13.4	0
S406 (ON)	13.4	0	0	0

Pin	Volt	Pin	Volt
1	0	10	0
2	0	11	47.4
3	0	12	43.9
4	-4.5	13	0
5	-1.3	14	47.3
6	0	15	-1.3
7	-0.6	16	0
8	-0.7	17	0
9	-4.5	18	0

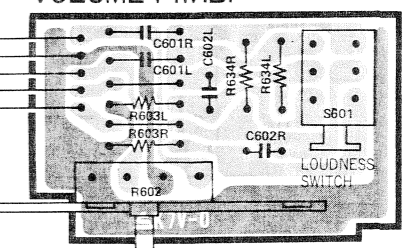
GRAPHIC EQUALIZER P.W.B.



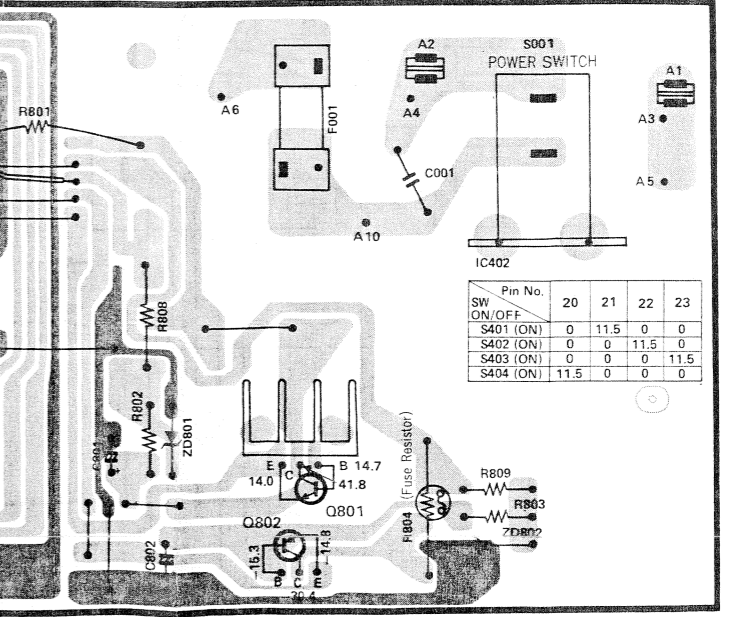
VOLUME P.W.B.



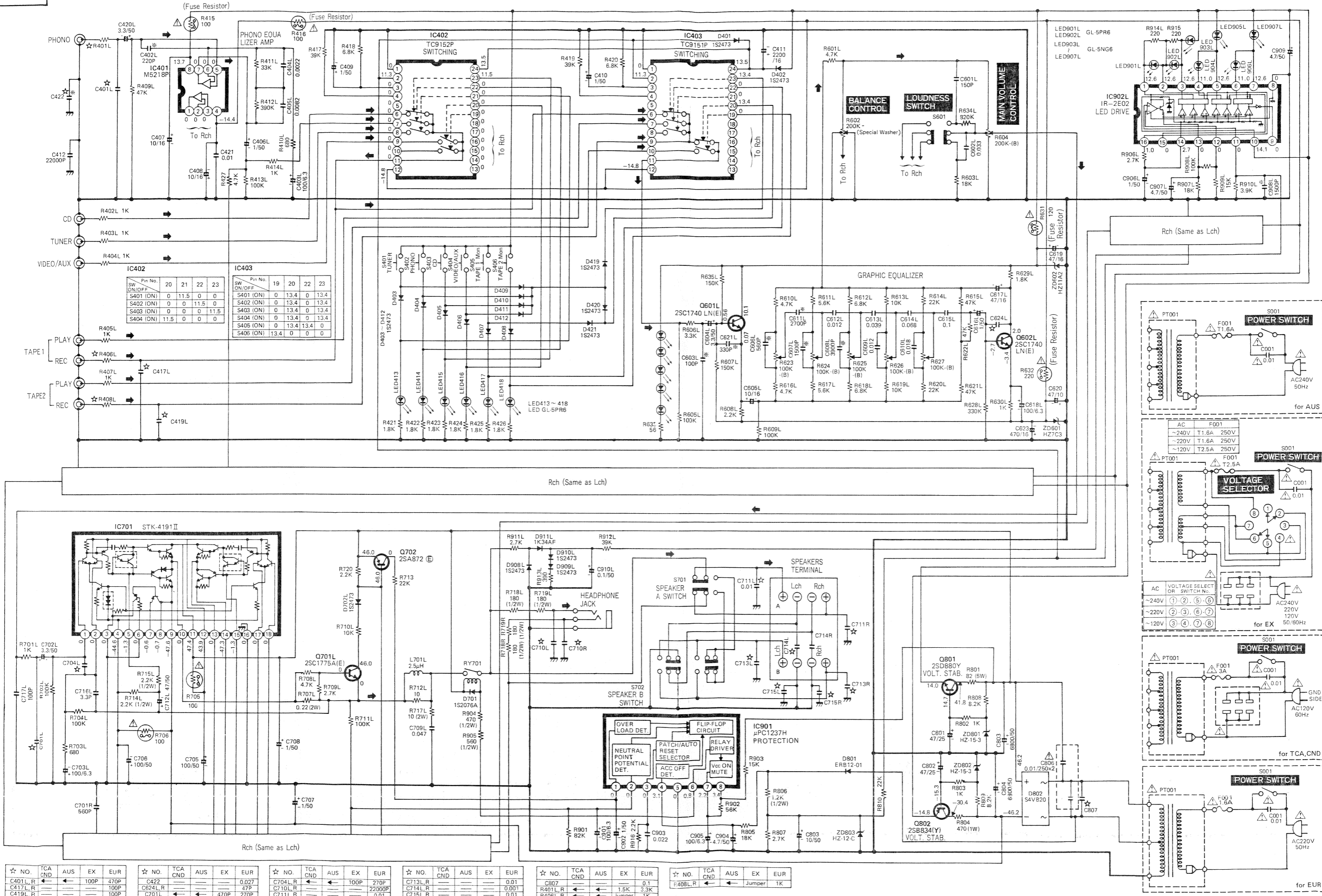
VOLUME P.W.B.



Pin	Volt	Pin	Volt
1	12.6	9	0
2	12.6	10	14.1
3	12.6	11	0
4	11.0	12	0
5	12.6	13	0
6	11.0	14	2.7
7	12.6	15	0
8	0	16	1.0



Pin No.	20	21	22	23
SW ON/OFF	0	11.5	0	0
S401 (ON)	0	11.5	0	0
S402 (ON)	0	0	11.5	0
S403 (ON)	0	0	0	11.5
S404 (ON)	11.5	0	0	0



SW ON/OFF	Pin No.	20	21	22	23
S401 (ON)		0	11.5	0	0
S402 (ON)		0	0	11.5	0
S403 (ON)		0	0	0	11.5
S404 (ON)		11.5	0	0	0

SW ON/OFF	Pin No.	19	20	22	23
S401 (ON)		0	13.4	0	13.4
S402 (ON)		0	13.4	0	13.4
S403 (ON)		0	13.4	0	13.4
S404 (ON)		13.4	0	13.4	0

☆ NO.	TCA CND	AUS	EX	EUR
C401L,R	←	100P	470P	
C417L,R	←	100P	47P	
C419L,R	←	100P		

☆ NO.	TCA CND	AUS	EX	EUR
C422	←		0.027	
C624L,R	←		47P	
C701L	←	470P	270P	

☆ NO.	TCA CND	AUS	EX	EUR
C704L,R	←	100P	270P	
C710L,R	←		0.001	
C711L,R	←		0.01	

☆ NO.	TCA CND	AUS	EX	EUR
C713L,R	←		0.01	
R401L,R	←	1.5K	3.3K	
R406L,R	←	Jumper	1K	

☆ NO.	TCA CND	AUS	EX	EUR
C807	←		0.1	
R408L,R	←	Jumper	1K	

☆ NO.	TCA CND	AUS	EX	EUR
R408L,R	←	Jumper	1K	

AC	F001	S001
~240V	T1.6A	250V
~220V	T1.6A	250V
~120V	T2.5A	250V

AC	VOLTAGE SELECT OR SWITCHING	S001
~240V	①-②-⑤-⑥	AC240V 220V 120V 50/60Hz
~220V	②-③-⑥-⑦	
~120V	③-④-⑦-⑧	

AC	F001	S001
~240V	T1.6A	250V
~220V	T1.6A	250V
~120V	T2.5A	250V

AC	F001	S001
~240V	T1.6A	250V
~220V	T1.6A	250V
~120V	T2.5A	250V

TEAC®



PARTS LIST

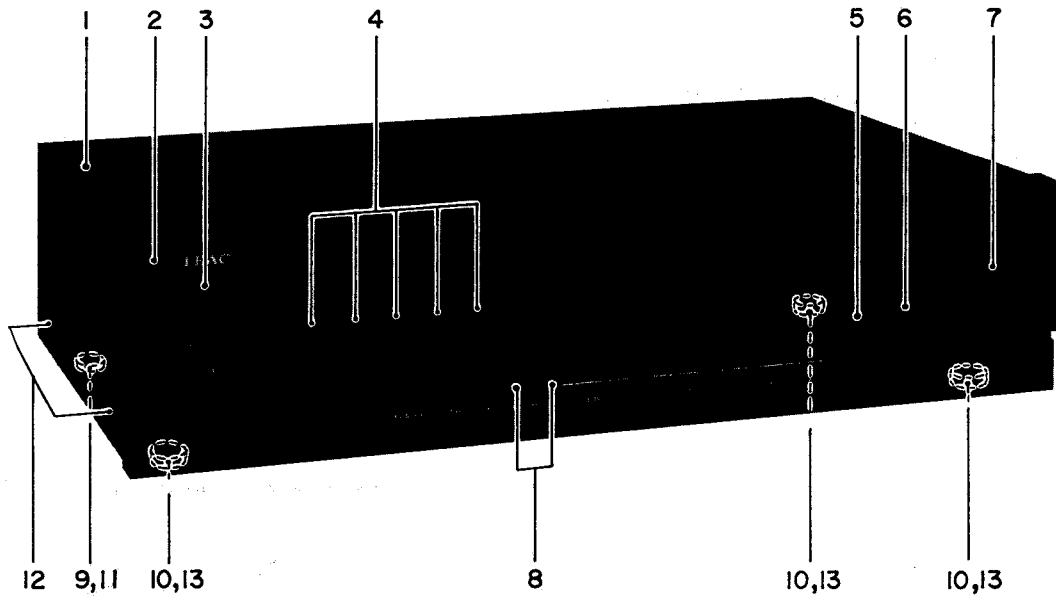
A-880

DC Integrated Stereo Amplifier

CAUTION

△ Parts marked with this sign are safety critical components. They must always be replaced with identical components-refer to the appropriate parts list and ensure exact replacement.

PARTS LOCATION-1



REF.NO.	PARTS NO.	DESCRIPTION	REMARKS
1- 1	*5761183800	COVER, TOP	
1- 2	*5761169100	PANEL ASSY, FRONT	
1- 3	5761163200	BUTTON ASSY, POWER	
1- 4	5761154400	KNOB, SLIDE	
1- 5	5761163100	BUTTON, PUSH	
1- 6	5761154300	KNOB, 14	
1- 7	5761154500	KNOB, 35	
1- 8	5761163300	BUTTON, PUSH M	
1- 9	*5760757500	FOOT (22X7.5)	
1-10	*5760732100	FOOT, 10X21.8	
1-11	*5761160000	SCREW, BIND DT 3X6	
1-12	*5761160400	SCREW, BIND DT 4X10	
1-13	*5761160200	SCREW, BIND DT 3X10	

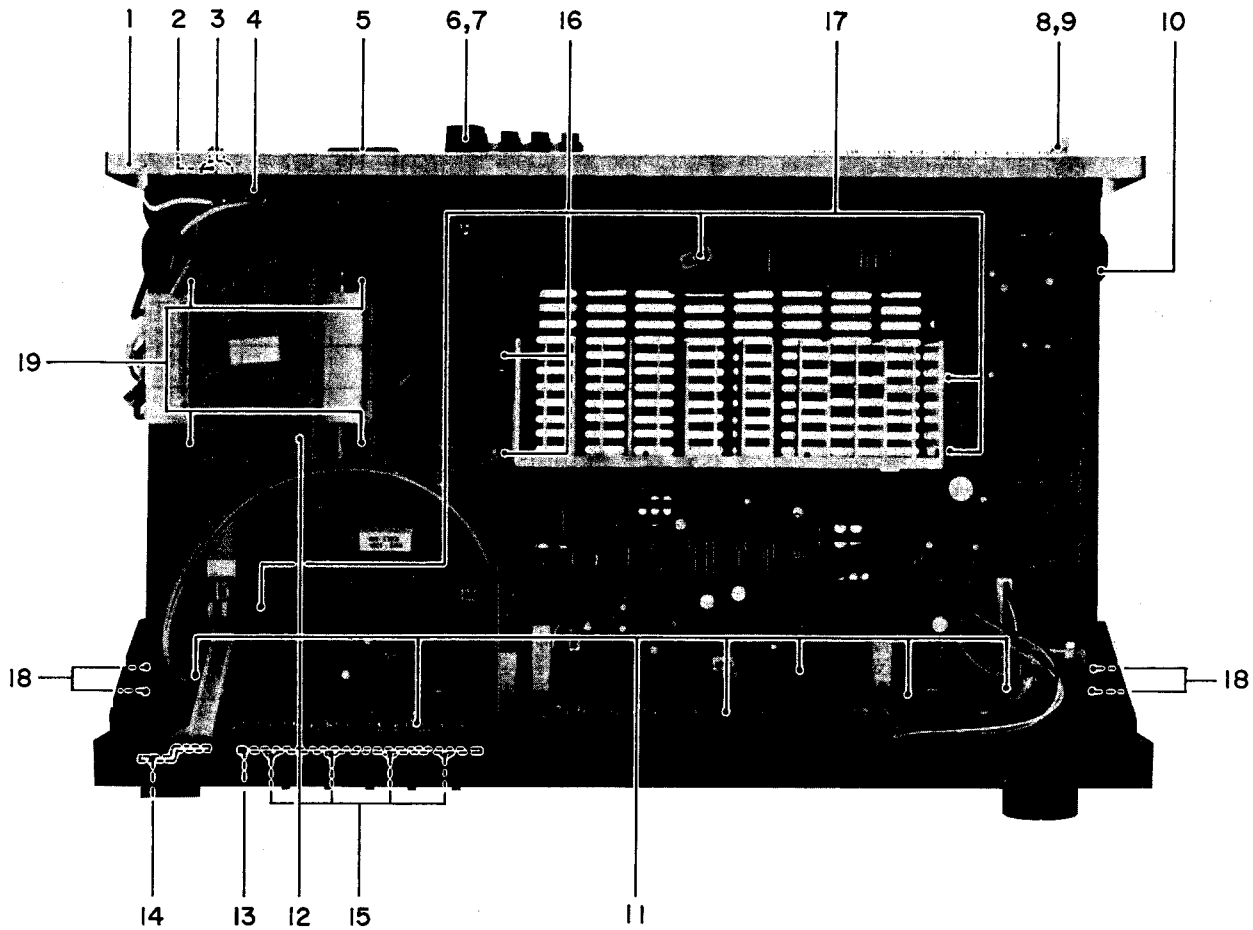
INCLUDED ACCESSORIES

REF.NO.	PARTS NO.	DESCRIPTION	REMARKS
	*5700068400	OWNER'S MANUAL	
	*5307027000	FUSE, 2.5A-125V MINI [GE]	
	*5760745500	ADAPTER, SOCKET E [GE]	

[US]:U.S.A. [C]:CANADA [E]:EUROPE [A]:AUSTRALIA [GE]:GENERAL EXPORT

Parts marked with *require longer delivery time.

PARTS LOCATION-2



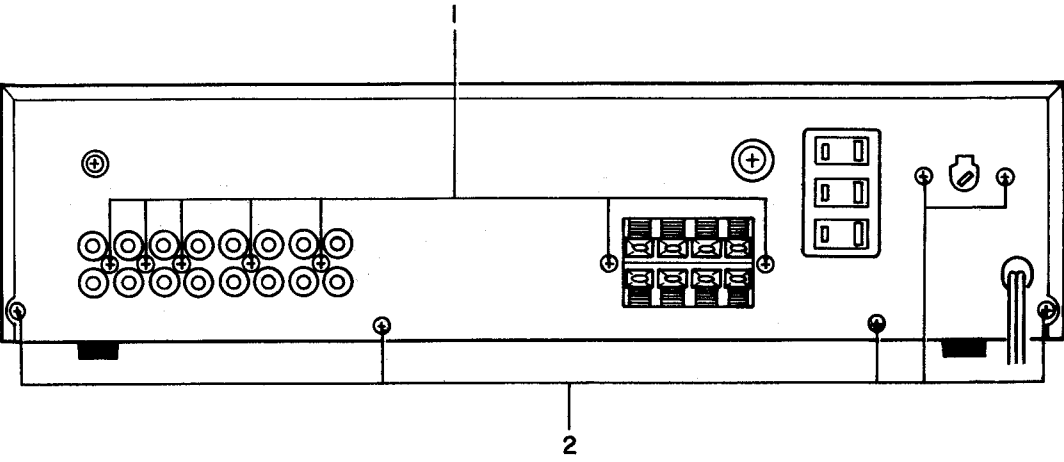
REF.NO.	PARTS NO.	DESCRIPTION
2- 1	*5761184400	PLATE, REAR [US, C]
	*5761184100	PLATE, REAR [A]
	*5761184200	PLATE, REAR [E]
	*5761184300	PLATE, REAR [GE]
2- 2	Δ*5760733600	BUSHING, 4N-4
2- 3	Δ*5761180100	CORD, AC [US, C]
	Δ*5350008300	CORD, AC [A]
	Δ*5350008200	CORD, AC [E, GE]
2- 4	Δ 5760747600	SW. VOLTAGE SELECTOR [GE]
2- 5	Δ*5761179800	AC OUTLET [US, C, GE]
2- 6	*5760757000	HOLDER, FUSE [GE]
2- 7	Δ 5142188000	FUSE, 1.6A-250V (T) [GE]
2- 8	*5760732800	SCREW, GND
2- 9	*5760732900	WASHER
2-10	*5761183900	CHASSIS

REF.NO.	PARTS NO.	DESCRIPTION
2-11	*5761168700	AD PWB ASSY [US, C]
	*5761179500	AD PWB ASSY [A]
	*5761179600	AD PWB ASSY [E]
	*5761179700	AD PWB ASSY [GE]
2-12	Δ 5761168600	TRANSFORMER, POWER [US, C]
	Δ 5761179200	TRANSFORMER, POWER [E]
	Δ 5761179300	TRANSFORMER, POWER [A]
	Δ 5761179400	TRANSFORMER, POWER [GE]
2-13	*5761182800	PLATE, SHIELD
2-14	*5761183600	HOLDER, JACK
2-15	*5761185300	SCREW, BIND FZ 2X3
2-16	*5761184700	SCREW, BIND DT 3X14
2-17	*5760735200	SCREW, BIND DT 3X12; CR
2-18	*5761184600	SCREW, BIND DT 3X8
2-19	*5761160300	SCREW, BIND DT 4X8

[US]:U.S.A. [C]:CANADA [E]:EUROPE [A]:AUSTRALIA [GE]:GENERAL EXPORT

Parts marked with *require longer delivery time.

PARTS LOCATION-3



REF.NO.	PARTS NO.	DESCRIPTION	REMARKS
3- 1	*5760737700	SCREW,BIND DT 3X10	
3- 2	*5760734900	SCREW,BIND DT 3X8	

AD PWB ASSY

REF.NO.	PARTS NO.	DESCRIPTION
	*5761168700	AD PWB ASSY [US,C]
	*5761179500	AD PWB ASSY [A]
	*5761179600	AD PWB ASSY [E]
	*5761179700	AD PWB ASSY [GE]
	*5761183000	AD PWB
	*5760750100	PLUG,MINI H;3P
	*5760750300	PLUG,MINI H;7P
	*5761179900	PLUG,XH (11P)
	*5761180000	JACK,HEADPHONE
	*5761152000	8 P US PIN JACK
	*5761180200	CONNECTOR,XH 3-100 L=100
	*5761180300	CONNECTOR,XH 3-250 L=250
	*5761180400	CONNECTOR,XH 400 L=400
	*5761180500	CONNECTOR,XH 11-130 L=130
	*5761180600	CONNECTOR,XH 3-200 L=200
	*5761180800	CONNECTOR,XH [E,A,GE]
	*5761158700	HOLDER,RADIATION (L)
	*5761181000	HOLDER,FUSE [EXCEPT GE]
	*5761183700	HOLDER,FIN(R)
	*5761185100	FIN,RADIATION(T)
	*5761185200	FIN,RADIATION L=60
	*5761172800	100724S RED
	*5760737700	SCREW,BIND DT 3X10
	*5761160000	SCREW,BIND DT 3X6
	*5761160500	SCREW,BIND TAPPING 3X16
C001	5760749700	C.,CERAMIC 0.01UF (P)
C401 L/R	5761175800	CC14SL1H10LJBK [EXCEPT E]
C401 L/R	5761176200	CK14B1H471KBK [E]
C402 L/R	5761175800	CC14SL1H10LJBK
C403 L/R	5761143100	CE04W0J101MBK
C404 L/R	5761176900	Q92M1H222JEBK
C405 L/R	5761177000	Q92M1H822JEBK
C406 L/R	5761144000	CE04W1H010MBK
C407	5761143300	CE04W1C100MBK
C408	5761143300	CE04W1C100MBK
C409	5761144000	CE04W1H010MBK
C410	5761144000	CE04W1H010MBK
C411	5761179000	CE04W1C222MBK
C412	5761142800	CK14Y1C223NB
C419 L/R	5761175800	CC14SL1H10LJBK [E]
C420 L/R	5761144100	CE04W1H3R3MBK
C421	5761144500	Q92M1H103KEBK
C422	5761177200	Q92M1H273KEBK [E]
C601 L/R	5761175900	CK14B1H151KBK
C602 L/R	5761177100	Q92M1H333KEBK
C603 L/R	5761175800	CC14SL1H10LJBK
C604 L/R	5761144100	CE04W1H3R3MBK
C605 L/R	5761143300	CE04W1C100MBK
C606 L/R	5761176300	CK14B1H561KBK
C607 L/R	5760751000	SW.,PUSH
C608 L/R	5761142500	CK14X1C392NB050
C609 L/R	5761144800	Q92M1H123KEBK
C610 L/R	5761144900	Q92M1H183KEBK
C611 L/R	5761142400	CK14X1C272MB050
C612 L/R	5761144800	Q92M1H123KEBK

AD PWB ASSY

REF.NO.	PARTS NO.	DESCRIPTION
C613 L/R	5761145000	Q92M1H393KEBK
C614 L/R	5761144700	Q92M1H683KEBK
C615 L/R	5761145100	Q92M1H104KEBK
C616 L/R	5761144000	CE04W1H010MBK
C617 L/R	5761143500	CE04W1C470MBK
C618 L/R	5761143100	CE04W0J101MBK
C619	5761143500	CE04W1C470MBK
C620	5761176400	CE04W1A470MBK
C621 L/R	5761176100	CK14B1H331KBK
C623	5761178900	CE04W1C471MBK
C624 L/R	5761175700	CC14SL1H470JBK [E]
C701 L	5761176200	CK14B1H471KBK [EXCEPT E]
C701 L		CK14B1H271KBK [E]
C701 R	5761176300	CK14B1H561KBK
C702 L/R	5761144100	CE04W1H3R3MBK
C703 L/R	5761143100	CE04W0J101MBK
C704 L/R	5761175800	CC14SL1H10LJBK [EXCEPT E]
C704 L/R	5761178800	CC45SL1H271JF [E]
C705	5761179100	CE04W1H101MBK
C707	5761144000	CE04W1H010MBK
C708	5761144000	CE04W1H010MBK
C709 L/R	5761144600	Q92M1H473KEBK
C710 L/R	5761142800	CK14Y1C223NB [E]
C711 L/R	5761144500	Q92M1H103KEBK [E]
C712 L/R	5761176700	CE04W1H470MBK
C713 L/R	5761144500	Q92M1H103KEBK [E]
C714 L	5761178100	Q92M1H102KE [E]
C714 R	5761176800	Q92M1H102KEBK [E]
C715 L/R	5761178200	Q92M1H103KE [E]
C716 L/R	5761175600	CC14SL1H3R3KBK
C717 L/R	5761175800	CC14SL1H10LJBK
C801 C802	5761143800	CE04W1E470MBK
C803	5761144200	CE04W1H100MBK
C804 C805	5761178000	CE04W1H682M
C806	Δ5760749600	C.,CERAMIC 0.01UF (Z)
C807	5761147800	Q92M2A104KEF [E]
C901	5761143100	CE04W0J101MBK
C902	5761144000	CE04W1H010MBK
C903	5761142800	CK14Y1C223NB
C904	5761176600	CE04W1H4R7MBK
C905	5761143100	CE04W0J101MBK
C906 L/R	5761144000	CE04W1H010MBK
C907 L/R	5761176600	CE04W1H4R7MBK
C908 L/R	5760751000	SW.,PUSH
C909	5761176600	CE04W1H4R7MBK
C910 L	5761176500	CE04W1HOR1MBK
C910 R	5761176500	CE04W1HOR1MBK
D401-D412	5042550000	DIODE,1S2473
D413-D414	5761162000	GL-5PR6
D419-D421	5042550000	DIODE,1S2473
D701	5224012510	DIODE,1S2076 FA FF
D702 L/R	5042550000	DIODE,1S2473
D801	5760765300	DIODE,ERB12-01R-TPT
D802	6048355000	DIODE,STACK.4A S4VB20
D901 L/R	5761162000	GL-5PR6,

[US]:U.S.A. [C]:CANADA [E]:EUROPE [A]:AUSTRALIA [GE]:GENERAL EXPORT

Parts marked with *require longer delivery time.

AD PWB ASSY

REF.NO.	PARTS NO.	DESCRIPTION
D902 L/R	5761162000	GL-5PR6,
D903 L/R	5761162100	GL-5NG6,
D904 L/R	5761162100	GL-5NG6,
D905 L/R	5761162100	GL-5NG6,
D906 L/R	5761162100	GL-5NG6,
D907 L/R	5761162100	GL-5NG6,
D908 L/R	5042550000	DIODE,1S2473
D909 L/R	5042550000	DIODE,1S2473
D910 L/R	5042550000	DIODE,1S2473
D911 L/R	5760765200	DIODE,1K34A-TPT
F001	5761180900	FUSE,3A 125V TSC [US]
F001	5142188000	FUSE,1.6A,250V [E,A]
IC401	5760748000	IC,M5218P,MONO
IC402	5761162500	IC.,TC9152P
IC403	5760748200	IC,TC9151P MONO
IC701	5761150200	IC.,STK4191(2)
IC901	5761162600	IC.,MPC1237H
IC902 L/R	5761162300	IR-2E02
L701 L/R	5760749500	COIL,AUDIO TRAP
Q601 L/R	5760765000	TR 2SC1740LN-E
Q602 L/R	5760765000	TR 2SC1740LN-E
Q701 L/R	5761161700	SI.TR,2SC1775A/E
Q702	5197326000	SI.TR.2SA-844
Q801	5231755100	SI.TR.2SD880-Y
Q802	5230505700	SI.TR.2SB834-Y
R401 L/R	5761139400	RD14S2E152JB [EXCEPT E]
R401 L/R	5761173400	RD14S2E332JB [E]
R402 L/R	5761139300	RD14S2E102JB
R403 L/R	5761139300	RD14S2E102JB
R404 L/R	5761139300	RD14S2E102JB
R405 L/R	5761139300	RD14S2E102JB
R406 L/R	5761139300	RD14S2E102JB [E]
R407 L/R	5761139300	RD14S2E102JB
R408 L/R	5761139300	RD14S2E102JB [E]
R410 L/R	5761173200	RD14S2E681JB
R411 L/R	5761174100	RD14S2E333JB
R412 L/R	5761174900	RD14S2E394JB
R413 L/R	5761174600	RD14S2E104JB
R414 L/R	5761139300	RD14S2E102JB
R415	Δ 5761147100	RD14B2E101JF-FR
R416	Δ 5761147100	RD14B2E101JF-FR
R417	5761174200	RD14S2E393JB
R418	5761173600	RD14S2E682JB
R419	5761174200	RD14S2E393JB
R420	5761173600	RD14S2E682JB
R421	5761139500	RD14S2E182JB
R422	5761139500	RD14S2E182JB
R423	5761139500	RD14S2E182JB
R424	5761139500	RD14S2E182JB
R425	5761139500	RD14S2E182JB
R426	5761139500	RD14S2E182JB
R601 L/R	5761139600	RD14S2E222JB
R602	5761177700	RV16041H204WM25K
R603 L/R	5761173900	RD14S2E183JB
R604	5761177800	RV16342A204BM25K

AD PWB ASSY

REF.NO.	PARTS NO.	DESCRIPTION
R605 L/R	5761174600	RD14S2E104JB
R606 L/R	5761173400	RD14S2E332JB
R607 L/R	5761174700	RD14S2E154JB
R608 L/R	5761139600	RD14S2E222JB
R609 L/R	5761174600	RD14S2E104JB
R610 L/R	5761139600	RD14S2E222JB
R611 L/R	5761139800	RD14S2E562JB
R612 L/R	5761173600	RD14S2E682JB
R613 L/R	5761139900	RD14S2E103JB
R614 L/R	5761174000	RD14S2E223JB
R615 L/R	5761174300	RD14S2E473JB
R616 L/R	5761139600	RD14S2E222JB
R617 L/R	5761139800	RD14S2E562JB
R618 L/R	5761173600	RD14S2E682JB
R619 L/R	5761139900	RD14S2E103JB
R620 L/R	5761174000	RD14S2E223JB
R621 L/R	5761174300	RD14S2E473JB
R622 L/R	5761174300	RD14S2E473JB
R623 R624	5761177900	VOLUME,SLIDE
R625 R626	5761177900	VOLUME,SLIDE
R627	5761177900	VOLUME,SLIDE
R628 L/R	5761174800	RD14S2E334JB
R629 L/R	5761139500	RD14S2E182JB
R630 L/R	5761139300	RD14S2E102JB
R631	Δ 5761178400	RN14B2E121JF-FR
R632	Δ 5761178500	RN14B2E221JF-FR
R633	5761173000	RD14S2E560JB
R634 L/R	5761175000	RD14S2E824JB
R635 L/R	5761174700	RD14S2E154JB
R701 L/R	5761139300	RD14S2E102JB
R702 L/R	5761174600	RD14S2E104JB
R703 L/R	5761173200	RD14S2E681JB
R704 L/R	5761174600	RD14S2E104JB
R705	Δ 5761147100	RD14B2E101JF-FR
R706	Δ 5761147100	RD14B2E101JF-FR
R707 L/R	5761178700	RN14B3DR22KF
R708 L/R	5761139600	RD14S2E222JB
R709 L/R	5761173300	RD14S2E272JB
R710 L/R	5761139900	RD14S2E103JB
R711 L/R	5761174600	RD14S2E104JB
R712 L/R	5761172900	RD14S2E100JB
R713	5761174000	RD14S2E223JB
R714 L/R	5761175500	RC05GF2H222KB
R715 L/R	5761175500	RC05GF2H222KB
R717 L/R	5761178600	RN14B3A100KF
R719 L/R	5761175100	RC05GF2H181KB
R720	5761139600	RD14S2E222JB
R801	5761177600	RWC14S3H820KT
R802	5761139300	RD14S2E102JB
R803	5761139300	RD14S2E102JB
R804	5761147200	RS08B3A181KEF
R805	5761173900	RD14S2E183JB
R806	5761175400	RC05GF2E122KB
R807	5761173300	RD14S2E272JB
R808	5761173700	RD14S2E822JB
R809	5761173700	RD14S2E822JB

[US]:U.S.A. [C]:CANADA [E]:EUROPE [A]:AUSTRALIA [GE]:GENERAL EXPORT

Parts marked with *require longer delivery time.

AD FWB ASSY

REF.NO.	PARTS NO.	DESCRIPTION
R810	5761174000	RD14S2E223JB
R901	5761174500	RD14S2E823JB
R902	5761174400	RD14S2E563JB
R903	5761173800	RD14S2E153JB
R904	5761175200	RC05GF2H471KB
R905	5761175300	RC05GF2H561KB
R906 L/R	5761173300	RD14S2E272JB
R907 L/R	5761173900	RD14S2E183JB
R908 L/R	5761174600	RD14S2E104JB
R909 L/R	5761173800	RD14S2E153JB
R910 L/R	5761173500	RD14S2E392JB
R911 L/R	5761173300	RD14S2E272JB
R912 L/R	5761174200	RD14S2E393JB
R913 L/R	5761173100	RD14S2E391JB
R914 L/R	5761139100	RD14S2E221JB
R915 L/R	5761139100	RD14S2E221JB
RY701	5761163000	RELAY, DH
S001	5760763900	SW. ,PUSH
S401 S402	5760743300	SW. ,TACT
S403 S404	5760743300	SW. ,TACT
S405 S406	5760743300	SW. ,TACT
S601	5761162900	SW. ,PUSH 1 KEY SUN
S701	5761162800	SW. ,PUSH 1 KEY
S702	5761162700	SW. ,PUSH 1 KEY
SPTC-C	5761184000	BRACKET, GND
ZD601	5760749000	DIODE, HZ-7C-3
ZD602	5761161900	HZ11A2-TPT
ZD801	5224543801	DIODE, ZENER RD15EB3 FR
ZD802	5224543801	DIODE, ZENER RD15EB3 FR
ZD803	5760765800	DIODE, ZENER HZ-12C-2 TPT