

## SERVICE MANUAL

# AD-RW900/900E

## CD Recorder/Reverse Cassette Deck

### CONTENTS

1. SAFETY INFORMATION .....	2
2. Specifications .....	3
3. Dimensional drawings .....	4
4. Updating of System Firmware .....	5
5. ADJUSTMENTS AND CHECKS.....	11
6. Block Diagram (AD-RW900) .....	16
Block Diagram (AD-RW900E) .....	17
7. Wiring Diagram (AD-RW900).....	18
Wiring Diagram (AD-RW900E).....	19
8. Exploded Views and Parts List (AD-RW900) .....	20
Exploded Views and Parts List (AD-RW900E) .....	25
9. PC Boards and Parts List .....	30
PC Boards and Parts List (ERP) .....	39
10. Included Accessories.....	50

### 目次

1. 安全規格.....	2
2. 仕様.....	3
3. 寸法図.....	4
4. システムファームウェアのアップデート.....	5
5. 調整と確認 .....	11
6. ブロックダイアグラム .....	16
7. 結線図.....	18
8. 分解図.....	20
9. 基板図とパーツリスト .....	30
10. 付属品.....	50

### INSTRUCTIONS FOR SERVICE PERSONNEL

BEFORE RETURNING APPLIANCE TO THE CUSTOMER, MAKE LEAKAGE-CURRENT OR RESISTANCE MEASUREMENTS TO DETERMINE THAT EXPOSED PARTS ARE ACCEPTABLY INSULATED FROM THE SUPPLY CIRCUIT.

# 1. SAFETY INFORMATION

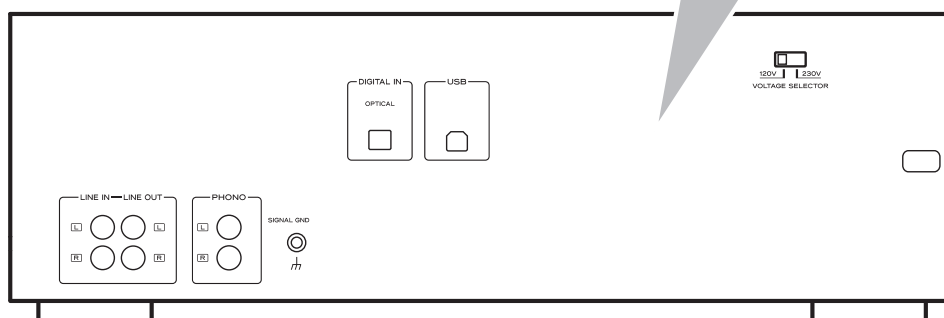
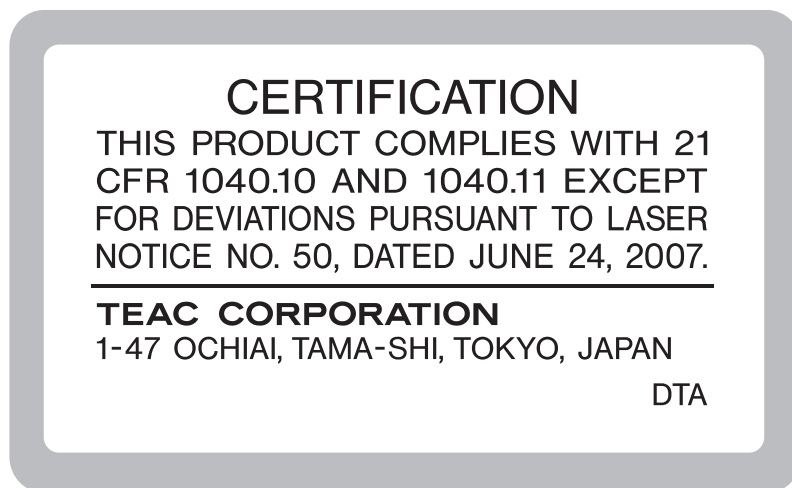
## 安全規格

### ● CAUTIONS ABOUT LASER RADIATION

This product has been designed and manufactured according to FDA regulations "title 21, CFR, chapter 1, subchapter J, based on the Radiation Control for Health and Safety Act of 1968", and is classified as class 1 laser product. There is not hazardous invisible laser radiation during operation because invisible laser radiation emitted inside of this product is completely confined in the protective housings.

The label required in this regulation is as follows:

For U.S.A.



### ● Cautions

- DO NOT REMOVE THE EXTERNAL CASES OR CABINETS TO EXPOSE THE ELECTRONICS. NO USER SERVICEABLE PARTS ARE INSIDE.
- IF YOU ARE EXPERIENCING PROBLEMS WITH THIS PRODUCT, CONTACT TEAC FOR A SERVICE REFERRAL. DO NOT USE THE PRODUCT UNTIL IT HAS BEEN REPAIRED.
- USE OF CONTROLS OR ADJUSTMENTS OR PERFORMANCE OF PROCEDURES OTHER THAN THOSE SPECIFIED HEREIN MAY RESULT IN HAZARDOUS RADIATION EXPOSURE.

Type	: SF-DS1XD	
Manufacturer	: SANYO ELECTRIC CO., LTD.	
Optical pickup :	Laser output	: Less than 1.6 mW (Play) on the objective lens
		: Less than 47 mW (Record) on the objective lens
		: Less than 13 mW (Erase) on the objective lens
Wavelength	: 785 nm	

### ● CAUTION for products that use replaceable lithium batteries:

There is danger of explosion if a battery is replaced with an incorrect type of battery.  
Replace only with the same or equivalent type

## 2. Specifications

### 仕様

#### CD recorder

Pickup	: 3-beam, semiconductor laser
Recording media	: CD-R/CD-RW discs for music
Recording sampling frequency	: 44.1 kHz
Frequency response	: 20 Hz–20 kHz (during playback: $\pm 1.5$ dB, during recording/playback: $\pm 2.0$ dB)
S/N ratio	: 90 dB or higher (during playback) 90 dB or higher (during digital recording/playback) 80 dB or higher (during analog recording/playback)
Dynamic range	: 86 dB or higher (during playback) 86 dB or higher (during digital recording/playback) 78 dB or higher (during analog recording/playback)
Total harmonic distortion	: 0.05% or lower (during playback) 0.05% or lower (during recording/playback)
Analog output	: 2.0 V (RCA)

#### Cassette deck

Track format	: 4-track, 2-channel stereo
Head structure	: recording/playback head $\times 1$ (reversible) Erasure head $\times 1$
Tape type	: C-60 cassette tape
Tape speed	: 4.76 cm/sec
Motor	: DC servomotor $\times 1$
Pitch control	: about $\pm 10\%$ (playback only)
Wow and flutter	: 0.25% (W.RMS)
Frequency response (total)	: chrome: 50–12,000 Hz $\pm 3$ dB normal: 50–12,000 Hz $\pm 3$ dB
S/N ratio (total)	: 59 dB (Dolby NR off, 3% THD level WTD) 69 dB (Dolby NR on, 5 kHz or higher)
Winding time	: about 150 sec (C-60 tape)
Line input (RCA)	: 0.46 V (input impedance 20 k $\Omega$ or higher)
Line output (RCA)	: 0.46 V (load impedance 50 k $\Omega$ or higher)
Headphone output	: 10 mW/32 $\Omega$

#### PHONO input

Input sensitivity	: 2.5 mV, 47 k $\Omega$
-------------------	-------------------------

#### Digital audio input

Input sampling frequency	: 32, 44.1, 48 kHz
--------------------------	--------------------

#### USB

##### USB port (A-type)

##### Playable MP3

Supported standard	: MPEG-1/2 Audio Layer-3
File name extension	: ".mp3"
Sampling frequency	: 32, 44.1, 48 kHz
Bit rate	: 8–320 kbps
Maximum number of folders	: 255
Maximum number of files	: 999

##### Playable WMA

Supported standard (DRM not compatible)	: Windows Media Audio Standard
File name extension	: ".wma"

##### Recording format (MP3)

Recording bit rate	: 128 kbps
Sampling frequency	: 44.1 kHz
USB port (B-type)	: $\times 1$

##### Computer system requirements

Connection	: USB 2.0 full-speed (12 Mbps, equivalent to USB 1.1)
------------	--

##### Driver

Windows	: WDM (Windows standard driver)
Mac OS X.	: Core Audio (Macintosh standard driver)

##### Verified operating systems

Windows:	: Windows XP, Windows Vista, Windows 7
Macintosh	: Mac OS X 10.5.8

Operation with standard computers that meet the above requirements has been confirmed, but operation with every computer that meets the above requirements is not guaranteed. Even with computers that meet the same requirement, each computer will have different processing capabilities according to their design specifications and operating environments.

#### General

##### Power

USA/CANADA Model	: AC 120V, 60Hz
Europe/UK Model	: AC 230 V, 50 Hz
General Export Mode	: AC 120 V/230 V, 50-60 Hz

##### Power consumption

28 W

##### External dimensions

Dimensions (W x H x D) (including protrusions)  
435 x 145 x 288 mm

##### Weight

5.6 kg (12 1/3 lb)

##### Operating temperature range

+5°C to +35°C

##### Operating humidity range

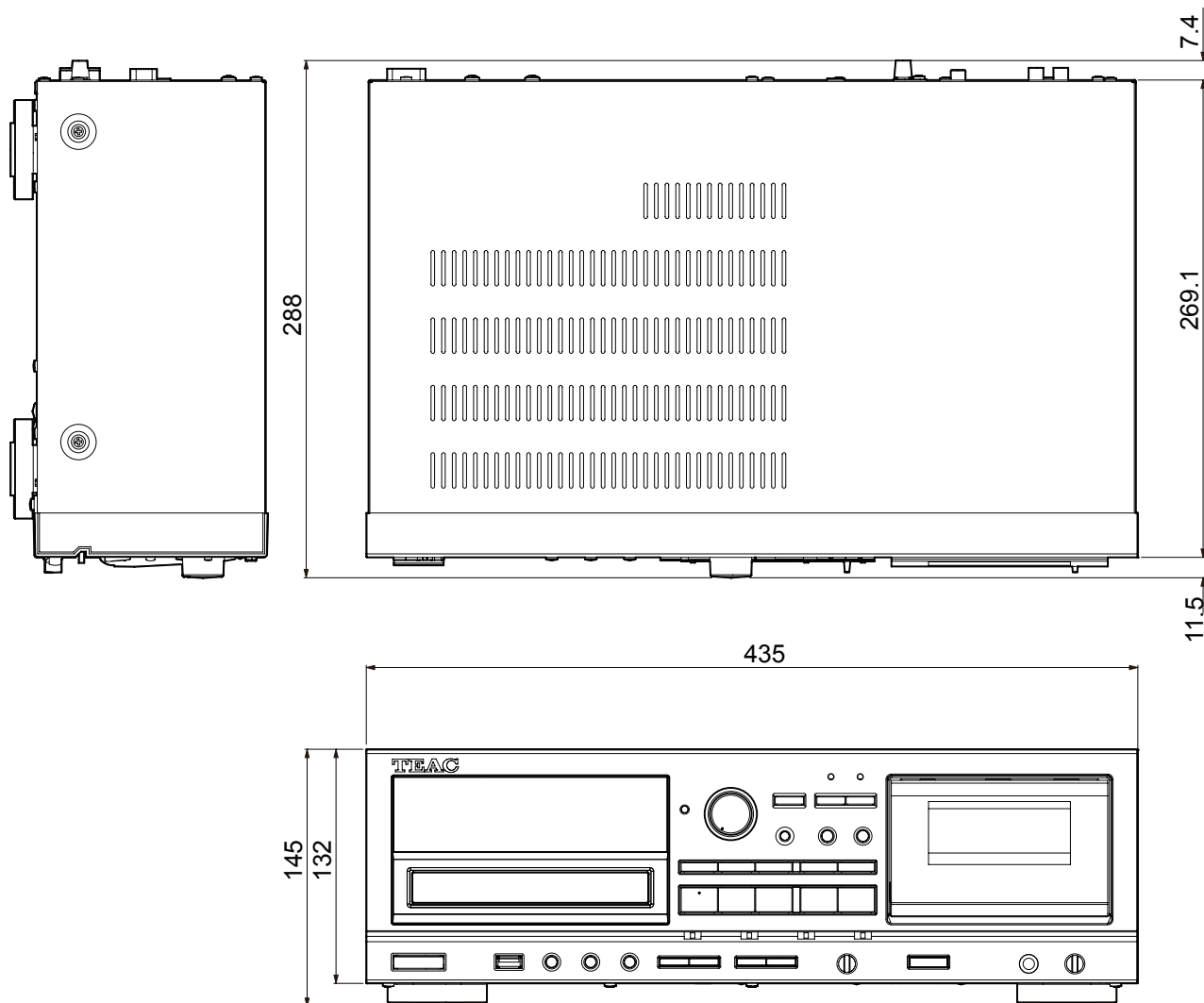
5% to 85% (no condensation)

##### Storage temperature range

–20°C to +55°C

### 3. Dimensional drawings

寸法図



## 4. Updating of System Firmware

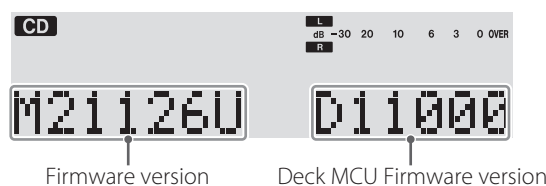
### システムファームウェアのアップデート

#### 4-1. How to update of MCU firmware

##### 4-1-1. Checking the firmware version Checking the firmware version

Check the firmware version of AD-RW900/900E before starting firmware updating procedures.

- 1) Turn the unit on.
- 2) Press the "COUNTER RESET" and "SOURCE" buttons at the same time.
- 3) The current firmware version is shown at the bottom of the display.
  - After checking the version, press the "COUNTER RESET" and "SOURCE" buttons at the same time again to restore the usual display contents. (You can also turn the unit off and on again to restore the usual display contents.)



##### 4-1-2. Firmware update procedures

Copy the "player.rom" updater file to an empty USB flash drive in advance.

- 1) Set the SOURCE to "USB".
- 2) After "No USB" appears on the display, connect the USB flash drive that contains the "player.rom" updater file to the USB port.
- 3) After "READING" appears on the display, "UPDATING" will appear for about 30 seconds while the firmware is being updated.

#### 注意

Do not disconnect the power cord or turn the unit off while "UPDATING" appears on the display.

- 4) After about 30 seconds, "COMPLETE" will appear on the display.
- 5) Disconnect the USB flash drive and turn the unit off.
- 6) When you turn the unit on again, it will be using the new firmware version.

#### 4-1. MCUファームウェアのアップデート

##### 4-1-1. ファームウェアバージョンの確認

ファームウェアアップデート作業前に、AD-RW900/900Eのファームウェアバージョンを確認します。

- 1) 本体の電源をオンにしてください。
- 2) 本体の「COUNTER RESET」と「SOURCE」ボタンを同時に押してください。
- 3) ディスプレー下側に現在のファームウェアバージョンが表示されます。
  - 確認後は、再度「COUNTER RESET」と「SOURCE」ボタンを同時に押し、通常状態に戻してください。(一度電源をオフにし、再度電源をオンにしても通常状態に戻ります。)

##### 4-1-2. ファームウェアアップデート手順

あらかじめ、書き換え用ファイル「player.rom」を空のUSBメモリーにコピーしておいてください。

- 1) SOURCEを「USB」にする。
- 2) 「NO USB」表示になったら、前面のUSB端子にUSBメモリーを挿入する。
- 3) 「READING」表示後、「UPDATING」が表示され、約30秒間書き換えを行います。

#### 注意

「UPDATING」表示中は、電源コードを抜いたり、電源をオフにしないでください。

- 4) 約30秒経過後「COMPLETE」が表示されます。
- 5) USBメモリーを抜いて、電源をオフにします。
- 6) 電源をオンにすると、新しいバージョンで起動します。

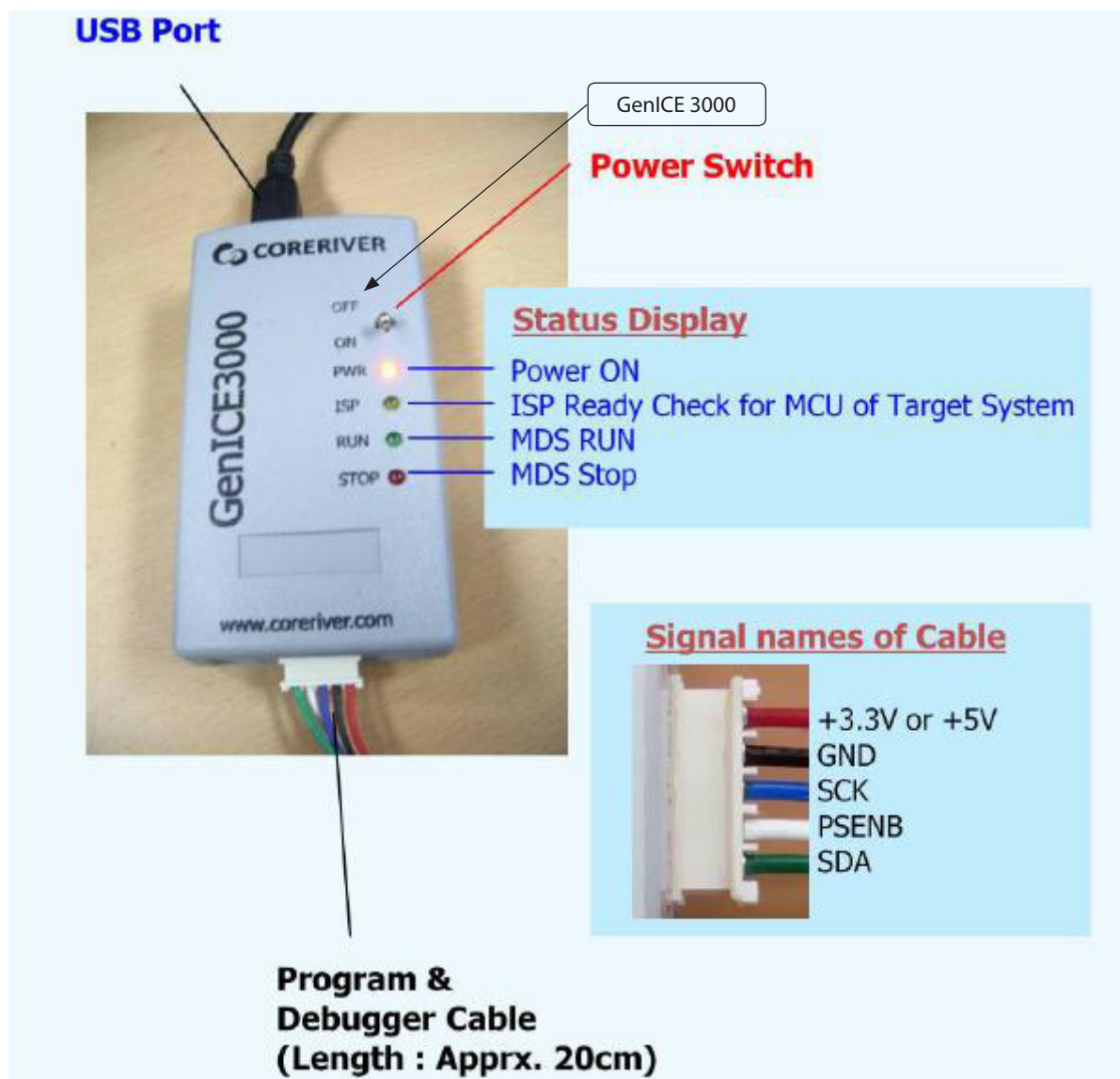
## 4-2. How to update for Deck\_MCU (Cassette) of AD-RW900

Target IC = SUB CPU\_GL89L581A0\_ ( U401)

### 4-2-1. Prepare a writer (GenICE3000)

## 4-2. Deckマイコンファームウェアのアップデート

Target IC = SUB CPU\_GL89L581A0\_ ( U401)



Kindly download Software from a follow Web site which is USB PC DRIVER, GenICE\_Manager Soft ware.

[http://www.coreriver.com/product-lines/top\\_CORRIVERmcu.html](http://www.coreriver.com/product-lines/top_CORRIVERmcu.html)

1) Install DRIVER (GENICE3000 USB PC DRIVER) to PC

- Connect Writer and USB Cable, and an opposite of USB Cable connect to PC.
- As PC recognize Writer automatically, you carry out install with directions of a personal computer.  
(If can not recognize Writer automatically, should do install DRIVER by manual from PC )

2) Install software for updata (GenICE Manager).

Install software to PC according to a procedure.

Finish for preparing of PC.

### 4-2-1.ライター (GenICE3000) の準備

USB PC DRIVER, GenICE\_Manager Soft ware を以下の Web site よりdownload してください。

[http://www.coreriver.com/product-lines/top\\_CORRIVERmcu.html](http://www.coreriver.com/product-lines/top_CORRIVERmcu.html)

1) PC にドライバー (GENICE3000 USB PC DRIVER)をインストールします。

- ライターとUSB ケーブルを繋ぎ、PC にUSB ケーブルを接続してください。
- 自動認識されるので、PCの指示に従ってインストールしてください。  
(自動認識されない場合は、各PC からマニュアルインストールを行う。)

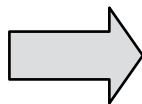
2)アップデートソフト(GenICE Manager)をインストールします。ソフトをインストール手順に従いPC にインストールしてください。

これでPC 側の準備は完了です。

3) Prepare 6P Connector (EH-EH (pitch 2.5mm) type)  
Connect 6P Connector as the below picture(Opposite side is connect to "IF PCB")



3)6P コネクタ (EH-EH (2.5mm ピッチ)タイプ) の準備  
下図のように6P コネクタ を挿入します。  
(反対側は IF PCB)



4) Connect 6P Connector to IF PCB J108 (Main power is OFF)

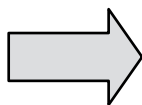
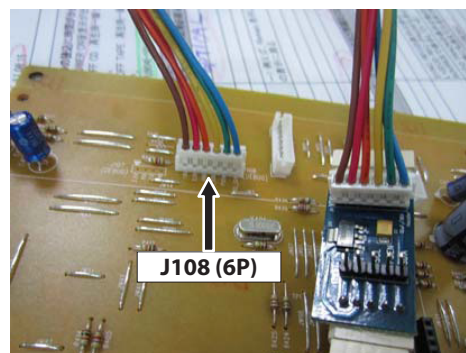
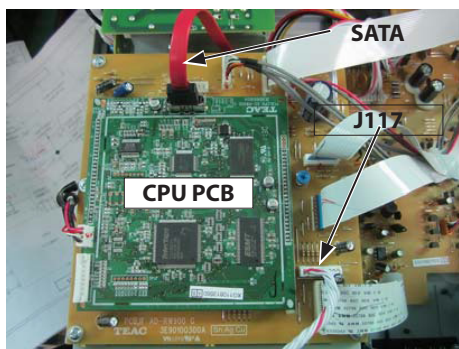
4)IF PCB J108 に6P コネクタを挿入 (電源はOFF)

**CAUTION**

If update do for product set, it need to remove connectors that are SATA and J 117 on IF PCB.

**注意**

製品の場合はIF PCB に挿入してあるCPU PCB と J117(LCD) への線材を抜いてください。



It is this and, finish to prepare for update of AD-RW900/900E.

これでAD-RW900/900E のUPDATE 準備は完了です。

**4-2-2. Execution of update**

1) The switch (below picture) of writer turns ON.

**4-2-2. 書き換えの実行**

1)ライターのスィッチをONにする。



Switch is lowered. (GenICE3000 is ON)  
Switchを[OFF]から[ON]にしてGenICE3000をONにする。

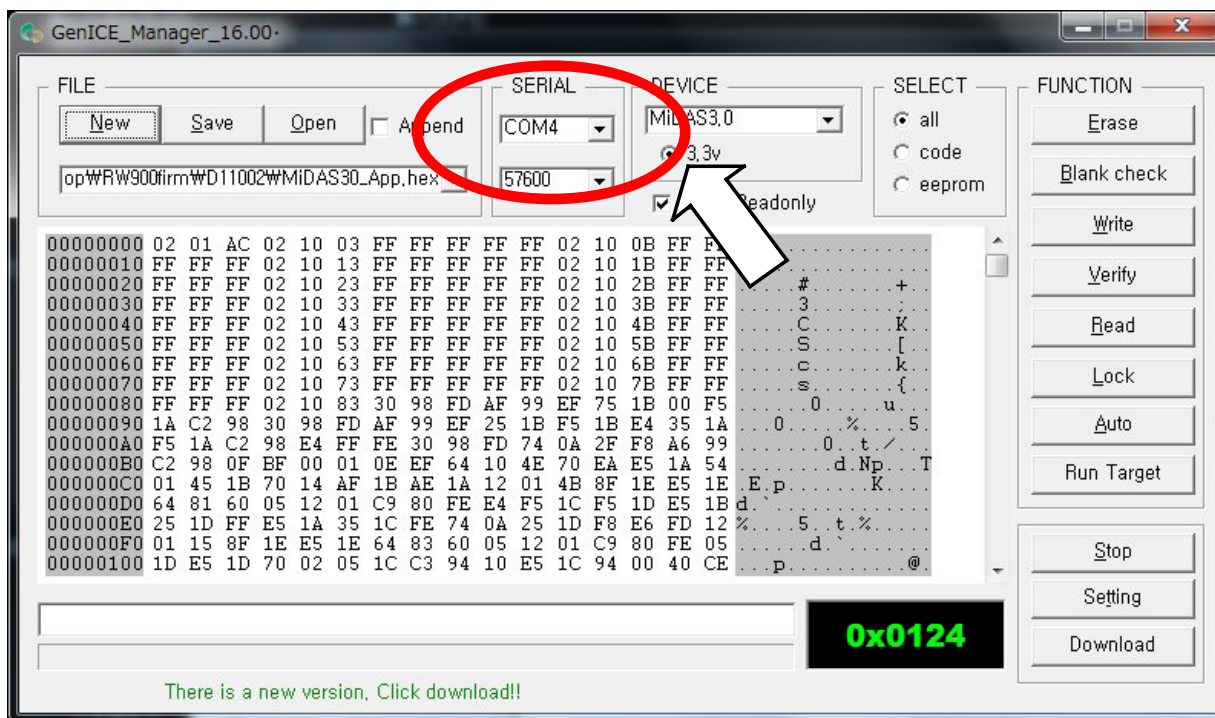
**CAUTION** : It is no need to connect to Exterior Power.

**注意** : 外部電源の接続は不要です。



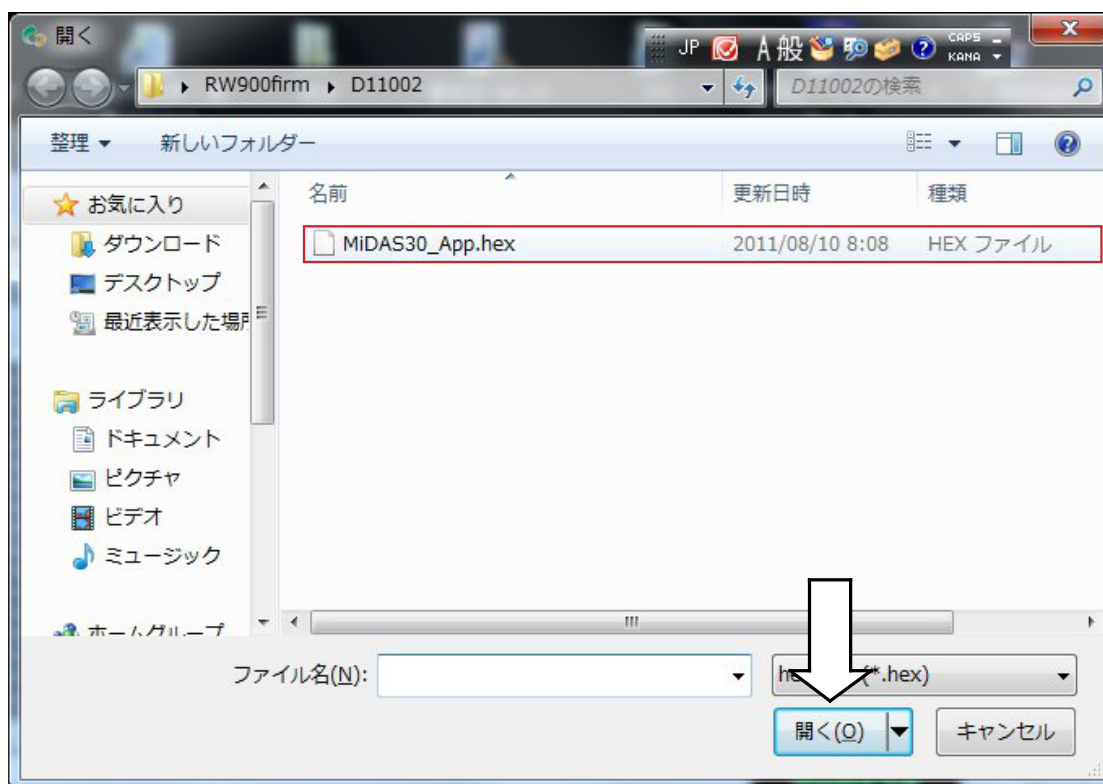
2) Run a writing software "GenICE Manager" (check: "COM \*\*\*" is "SERIAL" of frame of "GenICE Manager")

2) 書き込みソフト GenICE Manager を起動する。「SERIAL」に COM・・ の表示があることを確認)



3) Click "Open" icon, and select Firmware MiDAS30 App.hex".  
("MiDAS30 App.hex" is Target firmware for update.)

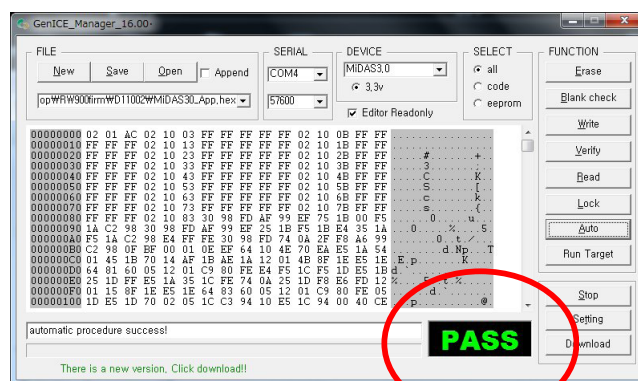
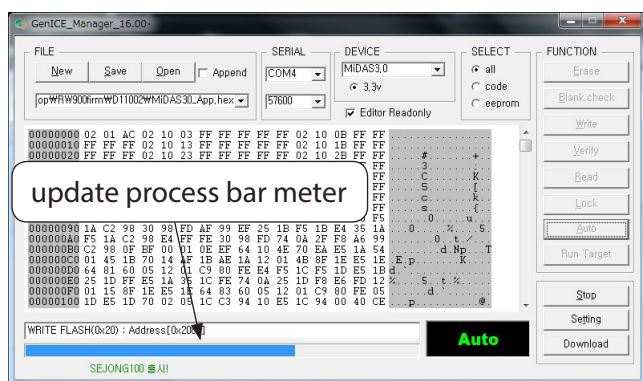
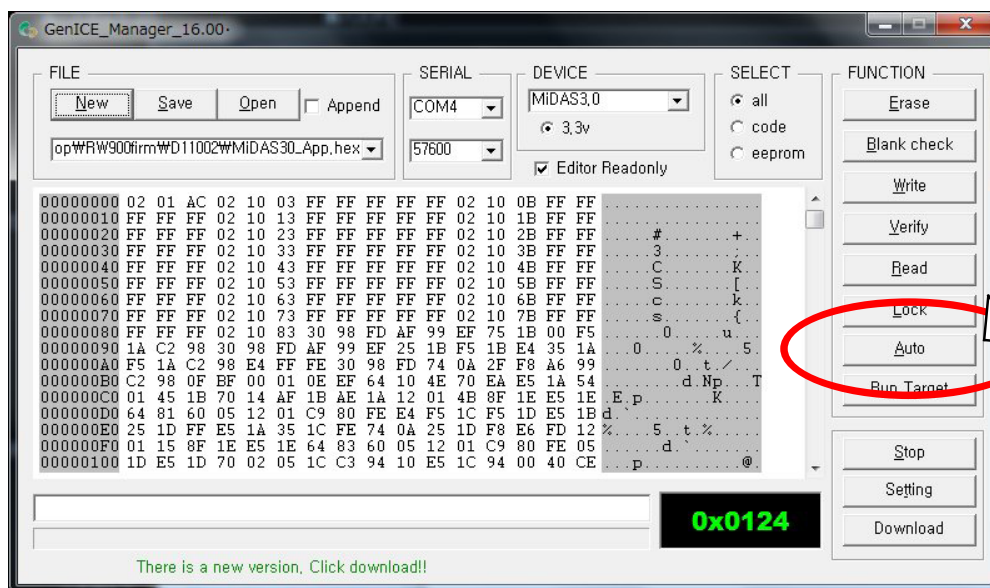
3) 「Open」 をクリックしてファーム: "MiDAS30 App. hex" を選択する。  
("MiDAS30 App.hex" は、UPDATE する Target firmware です)





4) Click "Auto" icon, then, start update process. And show an update process bar meter. After update completed without trouble, "PASS" is displayed on software.

4)「Auto」をクリックするとファームがアップデート開始となり「AUTO」が表示、UPDATE が無事終了すると「PASS」が表示されます。



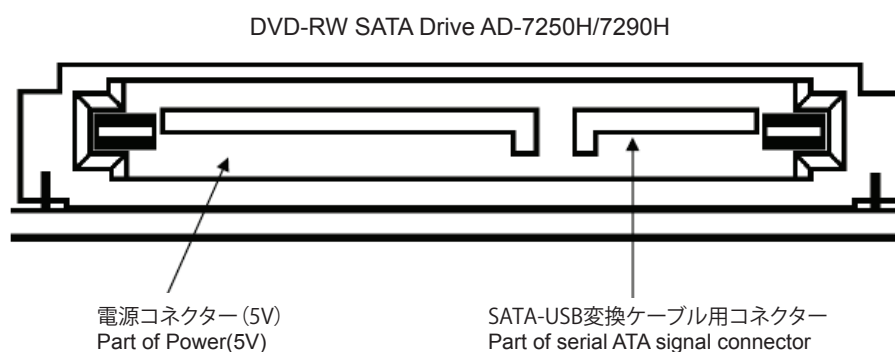
### 4-3. How to the firmware of DVD-RW SATA Drive by Sony Optiarc

#### 4-3-1. Prepare

1. USB-SATA convert cable
2. SATA power cable
3. DC power supply
4. xxx.exe file for update  
File name : AD7290H\_TEAC\_XXXX\_Updater.exe  
("XXXX" is shown the firmware version.)
5. PC with USB interface

#### 4-3-2. Connect

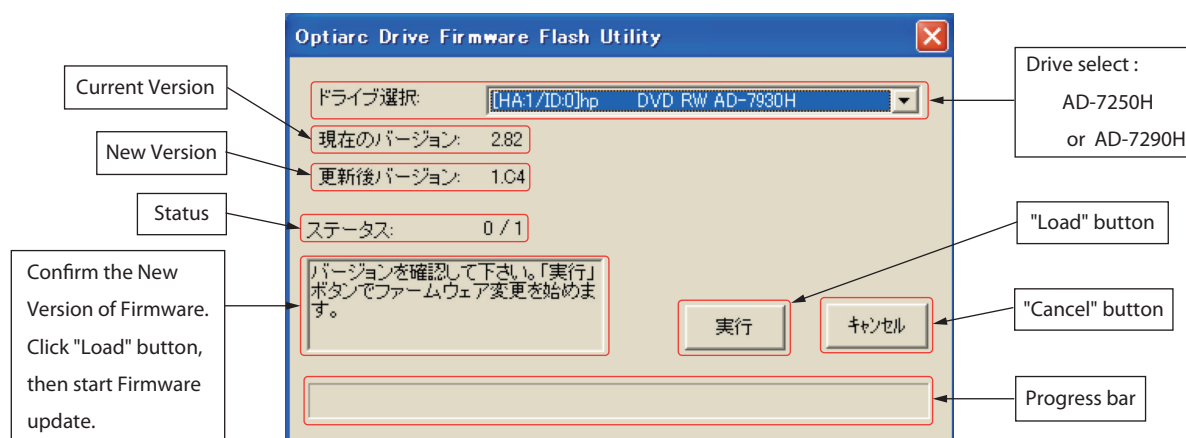
1. Connect the Drive (AD-7250H/7290H) and PC with USB-SATA convert cable.
2. Connect SATA power cable to the Drive, and supply power (5V) to the Drive. (See the drawing below.)



#### 4-3-3. Execution of update

The file for update is performed on PC.

1. Open the window of software that is "Optiarc Drive Firmware Flash Utility".
2. After confirmed the firmware version for update, click "Load" button.
3. Start the update, and progress bar is completed to the right, the update finish. (See the picture below.)



#### CAUTION

It should select Drive exactly.  
Select : AD-7250H or AD-7290H.

### 4-3. Sony Optiarc 製 DVD-RW sata drive AD-7250H/7290H のF/W update 手順

#### 4-3-1. 準備するもの

1. USB-SATA変換ケーブル
2. SATA電源ケーブル
3. DC電源
4. Drive製造元より供給される書き換え用ファイル  
ファイル名: AD7290H\_TEAC\_XXXX\_Updater.exe  
("XXXX"はVersionを表す。)
5. USB I/F 付きPC

#### 4-3-2. 接続

1. PCと書き換え対象Drive をUSB-SATA変換ケーブルで接続する。
2. DriveにSATA電源ケーブルを接続する。(下図参照)

#### 4-3-3. 書き換えの実行

PC上で書き換え用ファイルを実行する。

1. ソフトウェア"Optoarc Drive Firmware Flash Utility"のウィンドウを開く。
2. アップデート用ファームウェアのバージョンを確認後、"Load"ボタンをクリックする。
3. アップデートがスタートし、プログレスバーが右端まで進めば終了。(下記参照)

#### 注意

アップデートのソフトウェア上で、正確にアップデートするターゲットDrive(AD-7250H/7290H)を選択してください。

## 5. ADJUSTMENTS AND CHECKS

### 調整と確認

#### 5-1 CD PLAYER SECTION

##### 5-1-1 Output level check

1. Connect the AC voltmeter to the CD OUT.
2. Play the track 2 (1kHz, 0dB) of the MCD-111, and check the output level.

Specification :  $2.0 \pm 0.5V_{rms}$

##### 5-1-2 Distortion check

1. Connect the distortion meter to the CD OUT.
2. Play the track 2 (1kHz, 0dB) of the MCD-111, and check the distortion.

Specification : 0.05% or less (400Hz HPF + 22kHz LPF)

##### 5-1-3 Frequency response check

1. Play the track 3-6 (20Hz – 20kHz, 0dB) of the MCD-111, and check that output level are within the specified values with respect to the 1kHz reference level.

Specification : within  $\pm 1dB$

##### 5-1-4 S/N check

1. Play the track 7 (non-signal) of the MCD-111, and check that noise level are within the specified values with respect to the 1kHz reference level.

Specification : 90dB or more (22kHz LPF + IEC-A) : during digital recording/playback

80dB or more (22kHz LPF + IEC-A) : during analog recording/playback

##### 5-1-5 Channel separation check

1. Play the track 8 (L:1kHz / R:non-signal) of the MCD-111, and check the leakage from Lch to Rch.
2. In the same way, play the track 10 (R:1kHz / L:non-signal) of the MCD-111, and check the leakage from Rch to Lch.

Specification: 70dB or more (22kHz LPF + IEC-A).

#### 5-2 CASSETTE DECK SECTION

- Before performing adjustments and checks clean and demagnetize the entire tape path.
- In general, adjustments and checks are made in the order of Lch then Rch. Double REF. Nos. indicate Lch/Rch. (Example; VR101/VR201)
- 0dB is referenced to 0.775V.
- The AC voltmeter used in the procedures must have an input impedance of  $1M\Omega$  or more.
- Unless specified otherwise, adjustments and checks are made in FWD direction.

#### 5-1. CDプレーヤー部MCUファームウェアのアップデート

##### 5-1-1 出力レベルチェック

1. CD OUT端子にACボルトメーターを接続する。
2. MCD-111の2曲目(1kHz, 0dB)を再生し、出力レベルを確認する。

規格 :  $2.0 \pm 0.5V_{rms}$

##### 5-1-2 歪率チェック

1. CD OUT端子に歪率計を接続する。
2. MCD-111の2曲目(1kHz, 0dB)を再生し、歪率を確認する。

規格: 0.05%以下 (400Hz HPF + 22kHz LPF)

##### 5-1-3 周波数特性チェック

1. MCD-111の3～6曲目(20Hz～20kHz, 0dB)を再生し、基準レベル(1kHz, 0dB)に対し規格内であることを確認する。

規格:  $\pm 1dB$ 以内

##### 5-1-4 S/Nチェック

1. MCD-111の7曲目(無信号)を再生し、ノイズレベルが基準レベルに対し規格内であることを確認する。

規格: 90dB以上 (22kHz LPF + IEC-A)

デジタル REC / PLAY BACK

80dB以上 (22kHz LPF + IEC-A)

アナログ REC / PLAY BACK

##### 5-1-5 チャンネルセパレーションチェック

1. MCD-111の8曲目(L:1kHz / R: 無信号)を再生し、Rchへの漏れを確認する。

2. 同様に10曲目(R:1kHz / L: 無信号)を再生し、Lchへの漏れを確認する。

規格: 70dB以上 (22kHz LPF + IEC-A)

#### 5-2. カセットデッキ部

- 調整・確認の前に、テープ走行系の消磁と清掃を行なってください。
- 特に指定のない限り、調整はLch, Rchの順序で行なってください。尚、VR101 / VR201のように記されている回路番号はLch/Rchを示します。
- 0dBは0.775Vです。
- 測定に使用するレベル計の入力インピーダンスは $1M\Omega$ 以上のものを使用してください。
- 特に指定のない場合、調整および確認はFWD方向で行なってください。

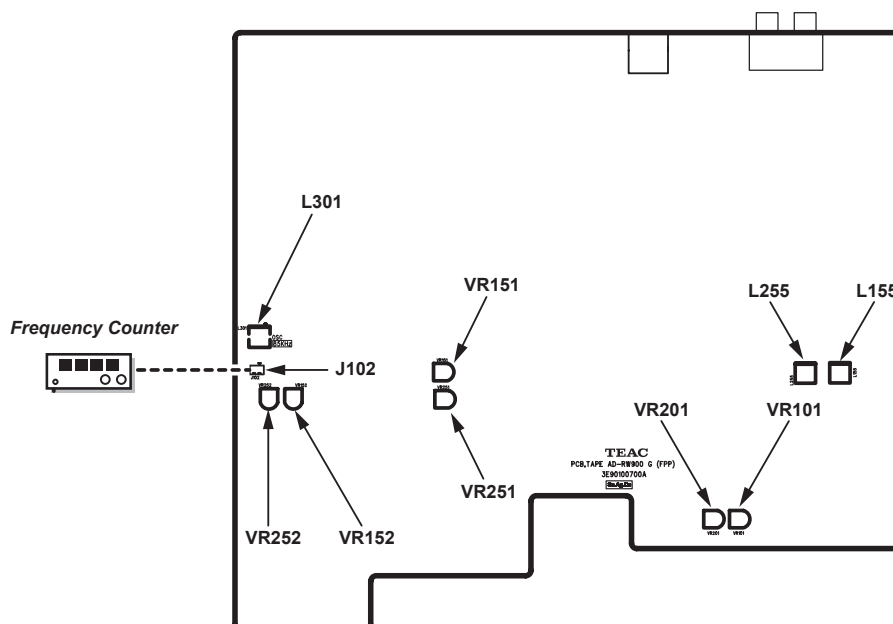


Fig. 5-1

5-3 BASIC TEST SETUP

See the picture below.

5-3 BASIC TEST SETUP

See the picture below.

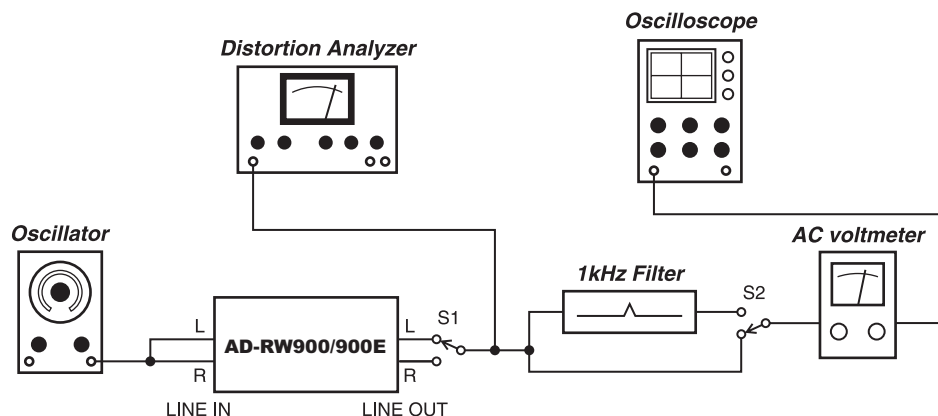


Fig. 5-2

5-3-1 Mechanical performance

5-3-1 Mechanical performance

ITEM 項目	SETTING 設定	TEST TAPE テストテープ	ADJUSTMENTS 調整ヶ所	MEASURING POINTS, RESULT 測定ヶ所・調整値
1. Wow and flutter ワウ・フラッタ	PITCH CONTROL: Center FWD and REV play	MTT-111N	Check	0.28% or less (WRMS)
2. Tape speed テープ速度	PITCH CONTROL: Center FWD play	MTT-111N	PCB,IF AD-RW900 G (3E90100300A) VR601	3,000±20Hz
	REV play	MTT-111N	Check	3,000±75Hz
3. Pitch control variable range ピッチコントロール 可変幅		MTT-111N	Check	PITCH CONTROL -: 2,640Hz or lower PITCH CONTROL +: 3,360Hz or higher

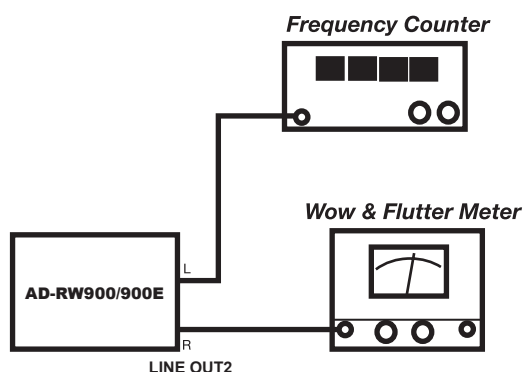


Fig. 5-3

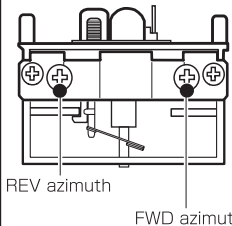
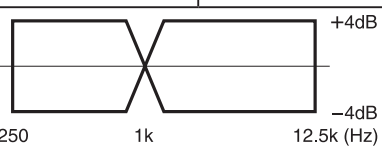
### 5-3-2 Mechanical performance

#### Deck settings:

Mode: PLAY  
DOLBY NR Switch: OFF  
PITCH CONTROL: Center

#### TEAC test tapes:

MTT-150C : For Dolby level calibration  
MTT-25702 : For playback frequency response check NORMAL tape  
MTT-25702 : For playback frequency response check NORMAL tape

ITEM 項目	SETTING 設定	INPUT SIGNAL 入力信号	ADJUSTMENTS 調整ヶ所	MEASURING POINTS, RESULT 測定ヶ所・調整値	REMARKS 備考
1. Head azimuth adjustment アジマス調整	Connection: Fig.5-3 Check and adjust in FWD, REV respectively FWD、REVそれぞれ調整・確認	MTT-25702 (12.5kHz)	Azimuth screws	LINE OUT: Maximum output level at L & R-ch Phase: within 45° (Fig. 5-5) Lch、Rchとも出力最大位相: 45°以内)	 REV azimuth FWD azimuth
2. Playback output level 再生出力レベル	Connection: Fig. 5-2	MTT-150C	VR101 / VR201	LINE OUT: 0dB (1V)	Ref. output level 基準出力レベル
3. Meter level メーターレベル		MTT-150C	Check	LEVEL METER: 0dB±1 dot	
4. PHONES output level PHONES出力レベル	Connection: Fig. 5-2 PHONES LEVEL: MAX	MTT-150C	Check	PHONES: 0±2dB	32 Ω load 32Ω負荷
5. Playback frequency response 再生周波数特性	Connection: Fig. 5-2	MTT-25702	Check	 +4dB -4dB 250 1k 12.5k (Hz)	
6. Playback S/N ratio 再生S/N比	Connection: Fig. 5-2	MTT-5513 Playback the leader tape portion リーダーテープ部を再生	Check	46dB min.	Ratio of ref. level to noise 基準出力レベルとノイズの比

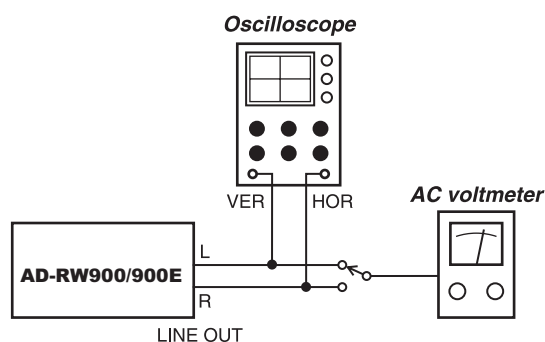


Fig. 5-4

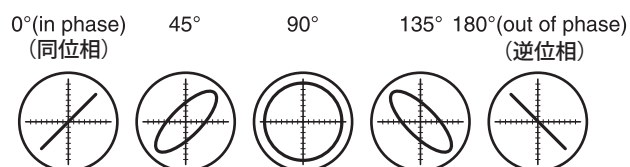


Fig. 5-5

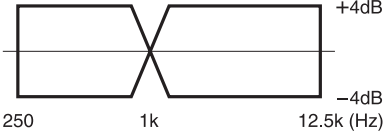
## 5-3-3 Mechanical performance

## Deck settings:

Mode: REC/PLAY  
 DOLBY NR Switch: OFF  
 PITCH CONTROL: Center  
 SOURCE Switch: LINE  
 REC LEVEL Control: Specified position (Item 2)

## TEAC recording test tapes:

MTT-5513 : For NORMAL

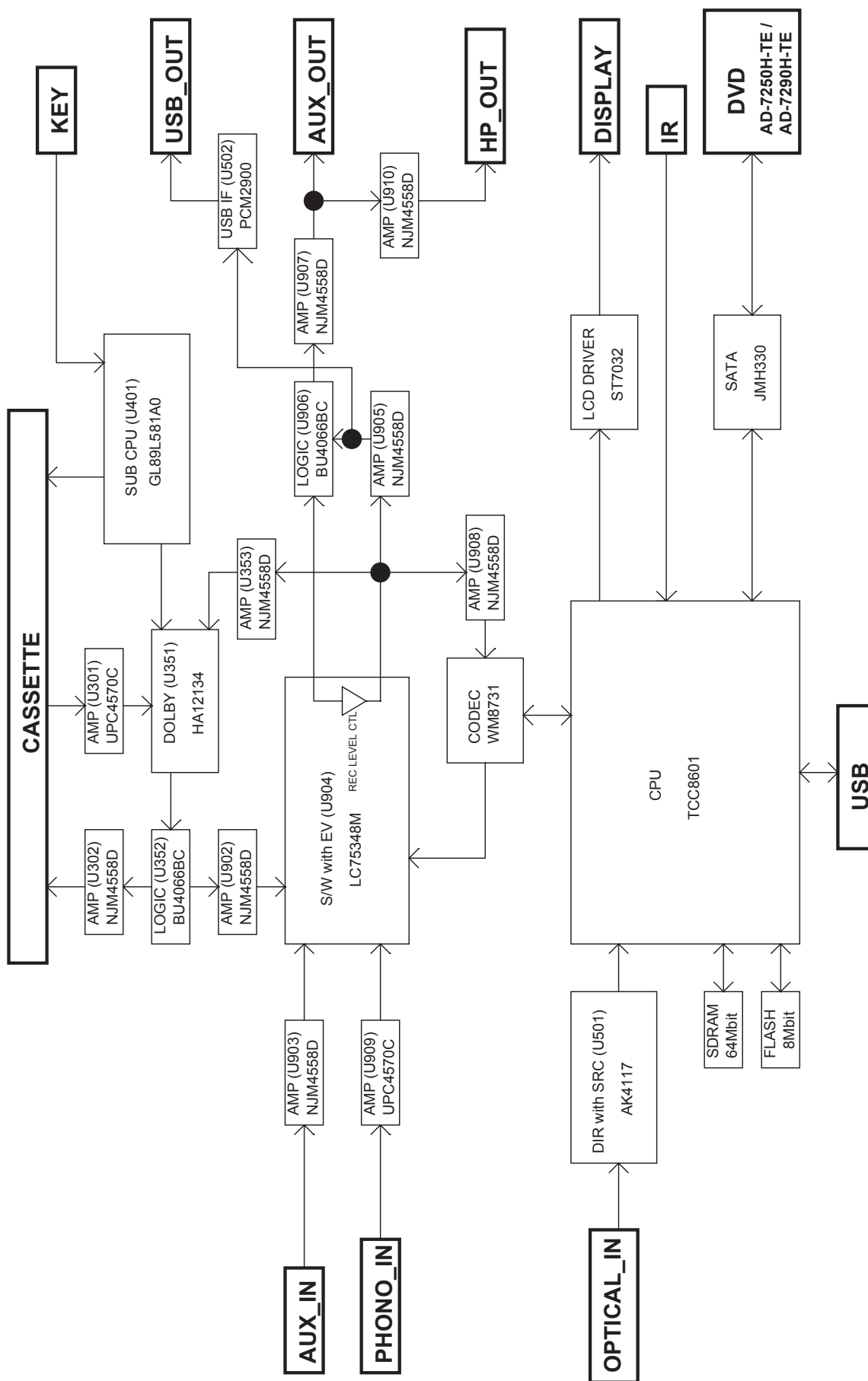
ITEM 項目	SETTING 設定	INPUT SIGNAL 入力信号	ADJUSTMENTS 調整ヶ所	MEASURING POINTS, RESULT 測定ヶ所・調整値	REMARKS 備考
1. Min. LINE input level ライン最小 入力レベル	Connection: Fig. 5-2. REC LEVEL: Max. Mode: REC-PAUSE	400Hz/-19dB (87mV)	Check	LINE OUT: -8.2±3dB (210mV-420mV)	
2. Specified LINE input level ライン規定 入力レベル	Connection: Fig. 5-2. Mode: REC-PAUSE	400Hz/-8.2dB (300mV)	REC LEVEL	LINE OUT: -8.2dB (300mV)	After adjusting, do not move (Specific position) 調整後は動かさないこと(規定位置)
3. Bias osc frequency バイアス発振 周波数	Connection: Fig. 5-1. TAPE: MTT-5513 Mode: REC-PAUSE	No signal	L301	J102 Pin 1 for BAIS OSC : 85±3kHz	
4. Record bias 録音バイアス	Connection: Fig. 5-2. TAPE: MTT-5513 MTT-5563	250Hz/10kHz -34dB (15mV)	NORMAL: VR152/VR252	LINE OUT: Nearly equal level at both frequencies 両周波数の録再 出力が同レベル (±0.5dB)	
5. MPX filter MPX フィルター	Connection: Fig. 5-2. TAPE: MTT-5513	19kHz/-12dB (195mV)	L155/L255	30dB min.	Ratio of ref. level to signal 基準出力レベルに 対する比
6. Record level 録音レベル	Connection: Fig. 5-2. TAPE: MTT-5513	400Hz/-8.2dB (300mV)	VR151/VR251	LINE OUT: -7.5±1dB (270mV-330mV)	
	TAPE: MTT-5563		Check	LINE OUT: -7.5±1dB (270mV-330mV)	
7. Total harmonic distortion 総合歪率	Connection: Fig. 5-2. TAPE: MTT-5513 MTT-5563	400Hz/-12dB (195mV)	Check	NORMAL: 2.0% or less	
8. Overall frequency response 録再周波数特性	Connection: Fig. 5-2. TAPE: MTT-5513 MTT-5563	250Hz-12.5kHz -34dB (15mV)	Check		
9. Overall S/N ratio 総合S/N比	Connection: Fig. 5-2. TAPE: MTT-5513 MTT-5563	No signal	Check	NORMAL: 46dB min.	Ratio of ref. level to noise 基準出力レベルと ノイズの比

ITEM 項目	SETTING 設定	INPUT SIGNAL 入力信号	ADJUSTMENTS 調整ヶ所	MEASURING POINTS, RESULT 測定ヶ所・調整値	REMARKS 備考
10. Erase efficiency 消去率	Connection: Fig. 5-2. TAPE: MTT-5563 1kHz B.P.F in	1kHz/+1dB (870mV)	Check	65dB min.	Ratio of the 1kHz recorded portion to the erased portion. 未消去部分と消去部分の比
11 REC MUTE function REC MUTE 効果	Connection: Fig. 5-2. TAPE: MTT-5563 1kHz B.P.F in	1kHz/+1dB (870mV)	Check	55dB min.	Ratio of the 1kHz recorded portion to the "REC MUTE" portion. 録音部分と"REC MUTE"部分の比
12. Channel separation チャンネル セパレーション	Connection: Fig. 5-2. TAPE: MTT-5563 1kHz B.P.F in	Lch: 1 kHz/- 9dB (275mV) Rch: No signal	Check	30dB min.	Ratio of Lch (1kHz) to Rch (no signal). Lch (1kHz) とRch (無信号)の比
13. Adjacent track cross-talk トラック間 クロストーク	Connection: Fig. 5-2. TAPE: MTT-5563	Lch: No signal Rch: 125Hz/- 9dB (275mV)	Check	40dB min.	Invert tape and play Rch track. Check leakage level against the output reference of previously recorded portion. (Specific position) テープを反転して再生した時のRch出力レベルの比
14. CD DUBBING function CD DUBBING 機能	Connection: Fig. 5-2. SOURCE: CD CD DUBBING: On TAPE: MTT-5513	MCD-111 Track 21 (1kHz/-10dB)	Check	LINE OUT: -8.2±1.5dB (252mV-357mV)	Ratio of ref. level to signal 基準出力レベルに対する比

# 6. Block Diagram (AD-RW900)

ブロックダイアグラム

## AD-RW900





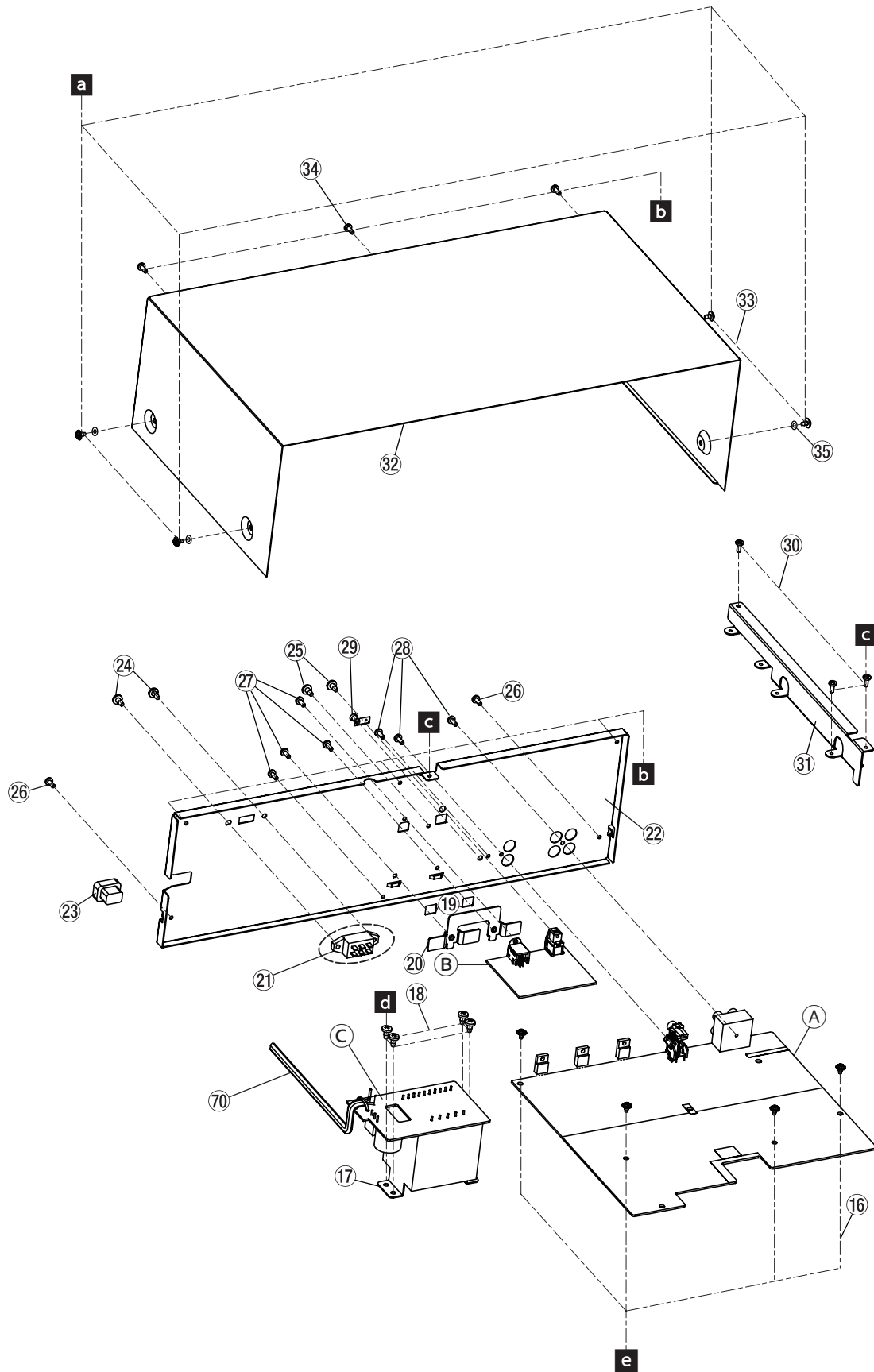


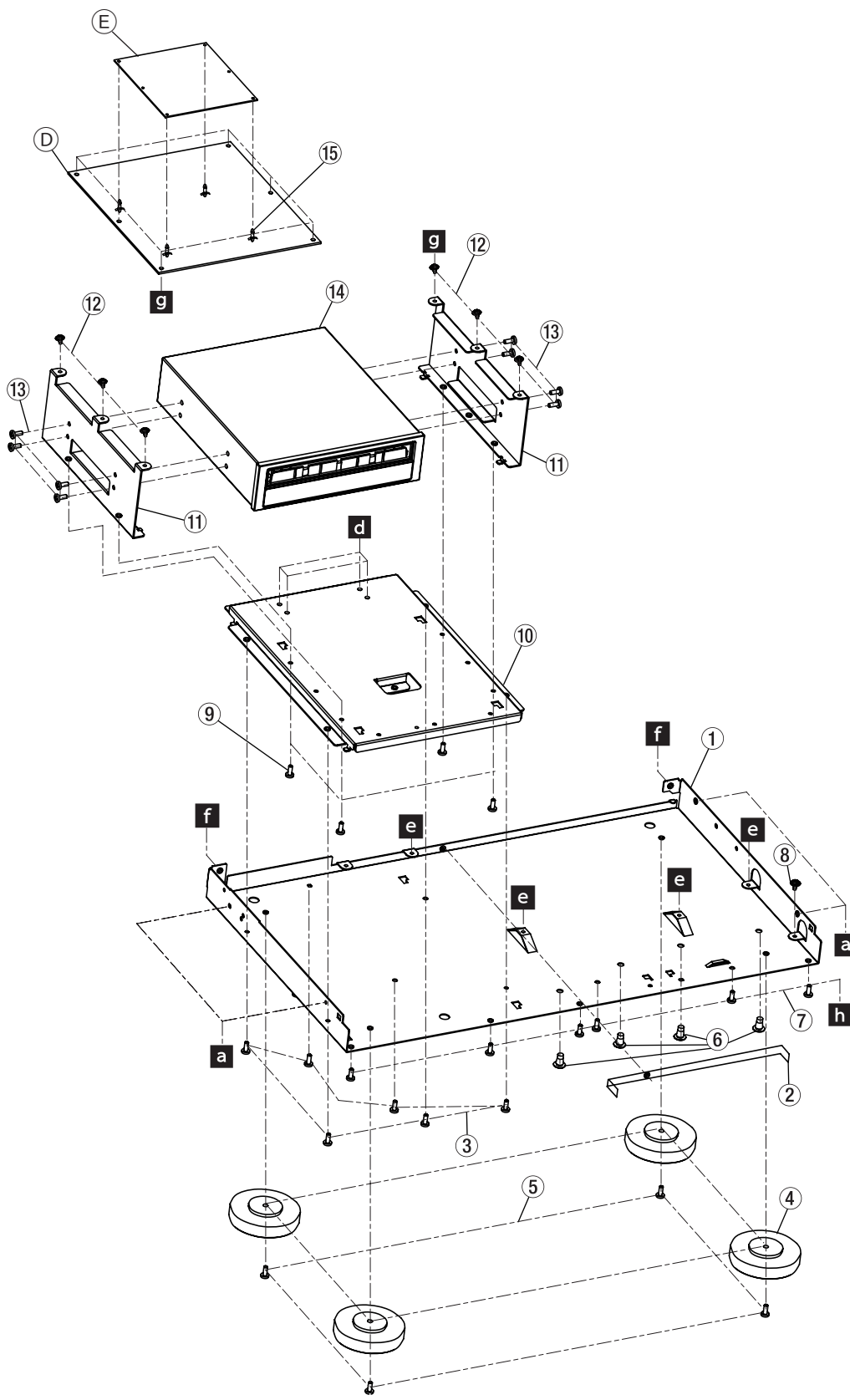


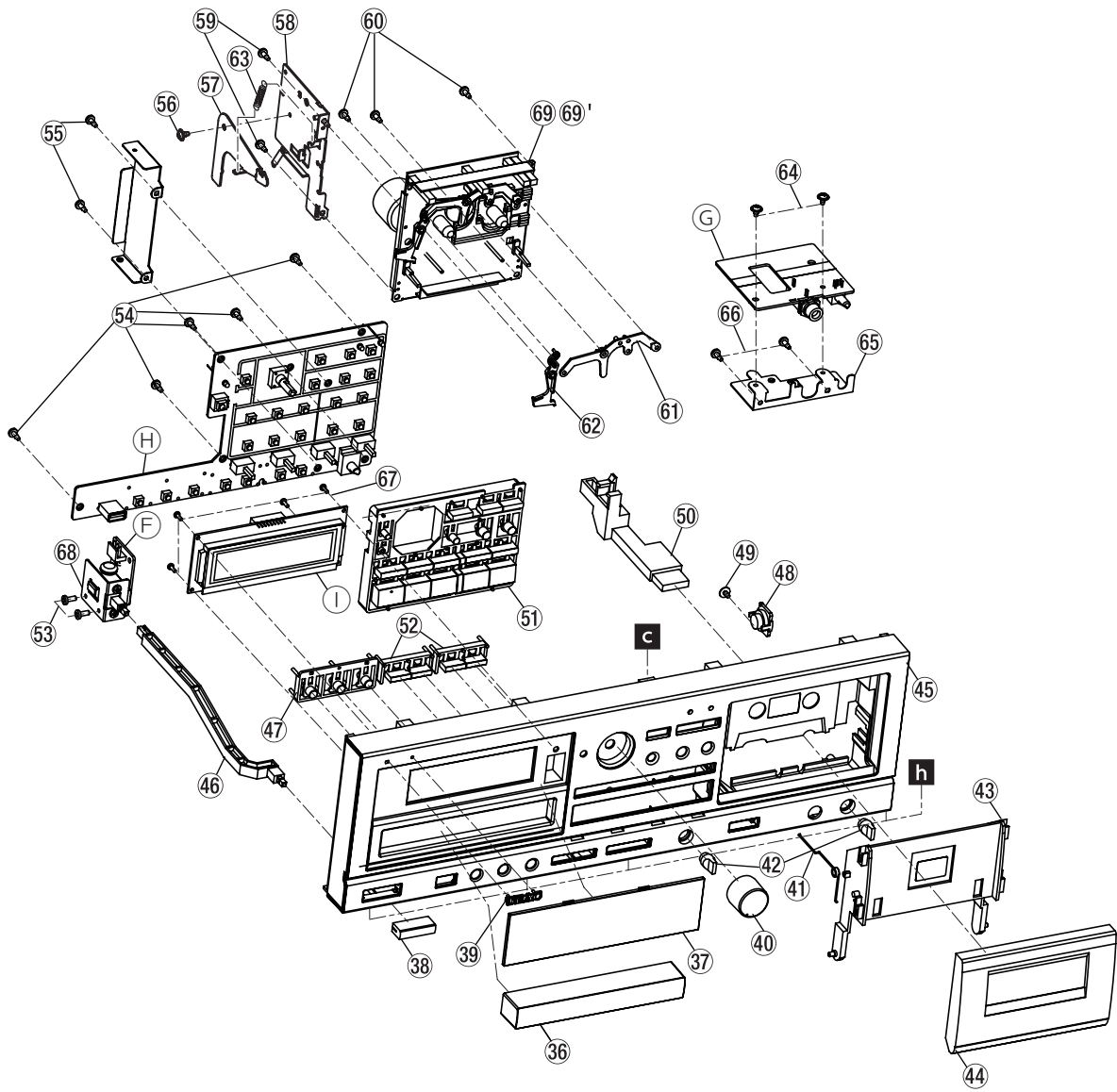


# 8. Exploded Views and Parts List (AD-RW900)

分解图







**CAUTION** Part with numbers in parentheses ( ) cannot be ordered.**注意** "()"付き品番は、発注できません。**Exploded View Parts List**

REF.NO.	PARTS NO.	DESCRIPTION .	QTY	REMARKS
1	M02904500B	CHASSIS,MAIN CDA550 G	1	
2	M03032700A	SHEET,BARRIER 8*120 TP G	1	
3	B00199708A	SCREW,BPB 3*8 FZB G	6	
4	3M0047200A	FOOT ASSY, SD-455 G	4	
5	B00199708A	SCREW,BPB 3*8 FZB G	4	FOOT
6	M02941400A	SPACER,SUPPORT RAD-8 G	4	
7	B00199708A	SCREW,BPB 3*8 FZB G	6	
8	B00198306A	SCREW,BPS 3*6 FZC G	1	
9	B00199708A	SCREW,BPB 3*8 FZB G	4	CHA-BASE CD
10	3M0863700A	BASE CD MECHA AD-RW900 G	1	
11	3M0863800A	BRACKET CD MECHA AD-RW900 G	2	
12	B00197806A	SCREW,PPSU 3*6 FZC G	6	
13	B00198306A	SCREW,BPS 3*6 FZC G	8	
14	3M0880200A	DVDRW MECH AD-7290H-TE G	1	(CD MECHA)
15	3M0875000A	HOLDER,LCG-6	4	
16	B00197806A	SCREW,PPSU 3*6 FZC G	4	PCBMAIN-CHA
17	3E0836000A	TRANS POWER,AD-RW900 G	1	[AC 100V / 120V / 120-220V / 230V]
18	B00199508A	SCREW,BPB 4*8 FZC G	4	PT-BASE CD
19	3M0259000B	WASHER PC 6*3*0.5 G	2	
20	3M0878700A	BRACKET IC AD-RW900 G	1	
21	3E040130	SW,SL14-22AH-0AN G	(1)	Only [T/C, EX] model
22	3M0863201A	REAR PANEL AD-RW900 JPN G	1	[JPN]
	3M0863293A	REAR PANEL AD-RW900 EX/T/C G	1	[T/C]
	3M0886900A	REAR PANEL AD-RW900 EUR G	1	[EUR]
23	3M000880	BUSHING, #2271(CSA)-G	1	
24	B00199808A	SCREW,BPB 4*8 FZB G	(2)	Only [T/C, EX] model
25	B00198608A	SCREW,BPS 3*8 FZB G	2	
26	B00199708A	SCREW,BPB 3*8 FZB G	2	
27	B00199708A	SCREW,BPB 3*8 FZB G	4	
28	B00199708A	SCREW,BPB 3*8 FZB G	3	
29	3E017240G	GND TERMINAL	1	
30	B00199708A	SCREW,BPB 3*8 FZB G	3	
31	3M0025300C	BRACKET,PCB(A) G AD500	1	
32	3M0863410A	BONNET AD-RW900 B G	1	BLACK
	3M0863400A	BONNET AD-RW900 S G	1	SILVER
33	B00197606A	SCREW,PPSU 3*6 FZB G	4	
34	B00170608A	SCREW,VPCR 3*8 FZB G	3	
35	M02788000A	T LK WSHR,3D G	4	
36	3M0863000A	TRAY PANEL AD-RW900 B G	1	BLACK
	3M0863010A	TRAY PANEL AD-RW900 S G	1	SILVER
37	3M0863300A	WINDOW LCD AD-RW900 G	1	
38	3M0821800A	BUTTON,POWER AD800 G	1	BLACK
	3M0821810A	BUTTON POWER AD-RW900 S G	1	SILVER
39	3M0051640A	TEAC BADGE	1	
40	3M0024620A	KNOB REC VOL AD-800 G	1	BLACK
	3M0863500A	KNOB REC VOL AD-RW900 S G	1	SILVER
41	3M0010500B	TORSION SPRING,CASE II G	1	
42	3M0024800A	KNOB,PHONE VOLUME AD500 G	2	BLACK
	3M0024850A	KNOB,PHONE VOLUM(SLIVER)G	2	SILVER
43	3M0011100A	CASE,LEAD W-780R G	1	

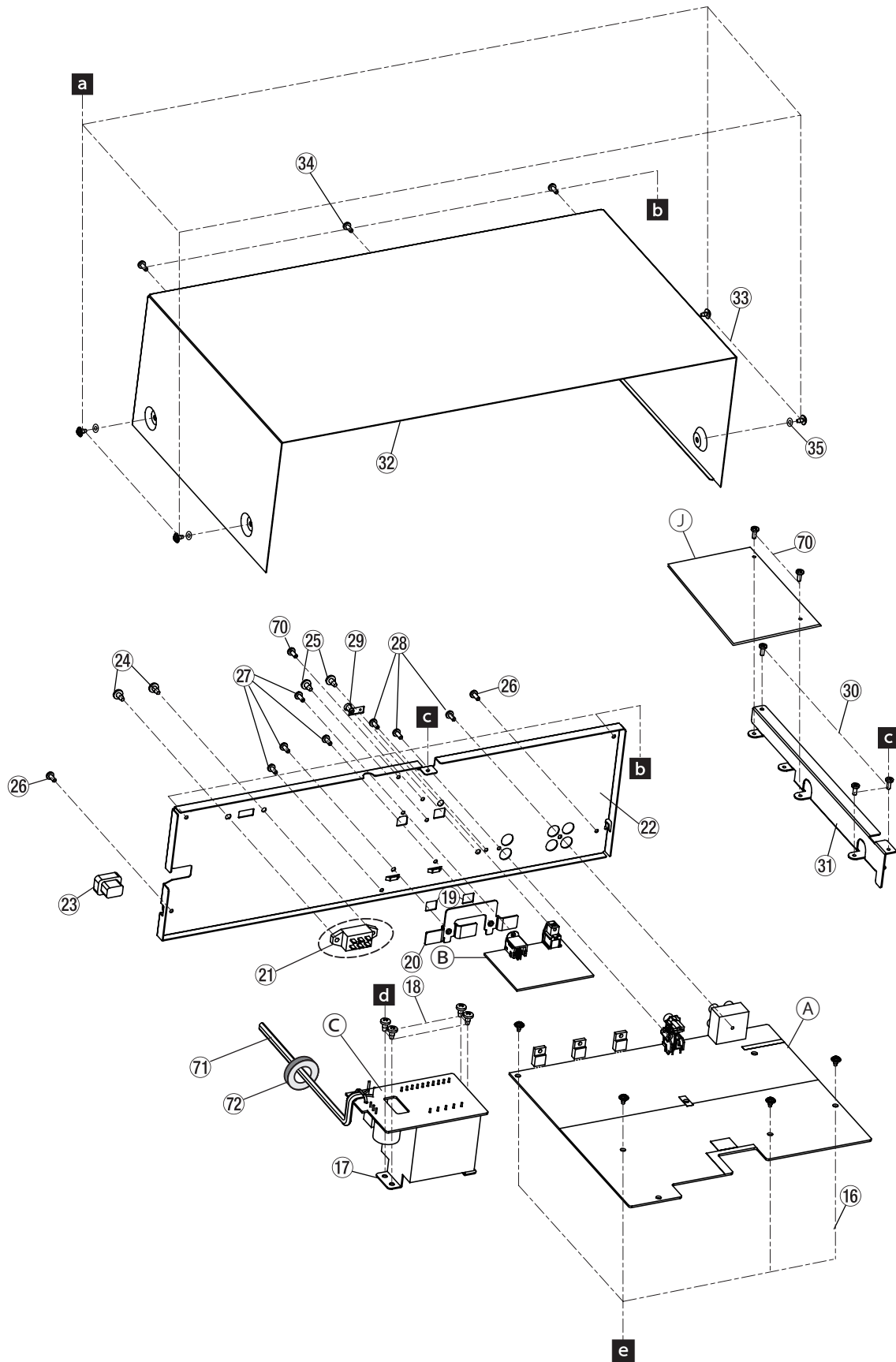
**CAUTION** Part with numbers in parentheses ( ) cannot be ordered.**注意** "()"付き品番は、発注できません。**Exploded View Parts List**

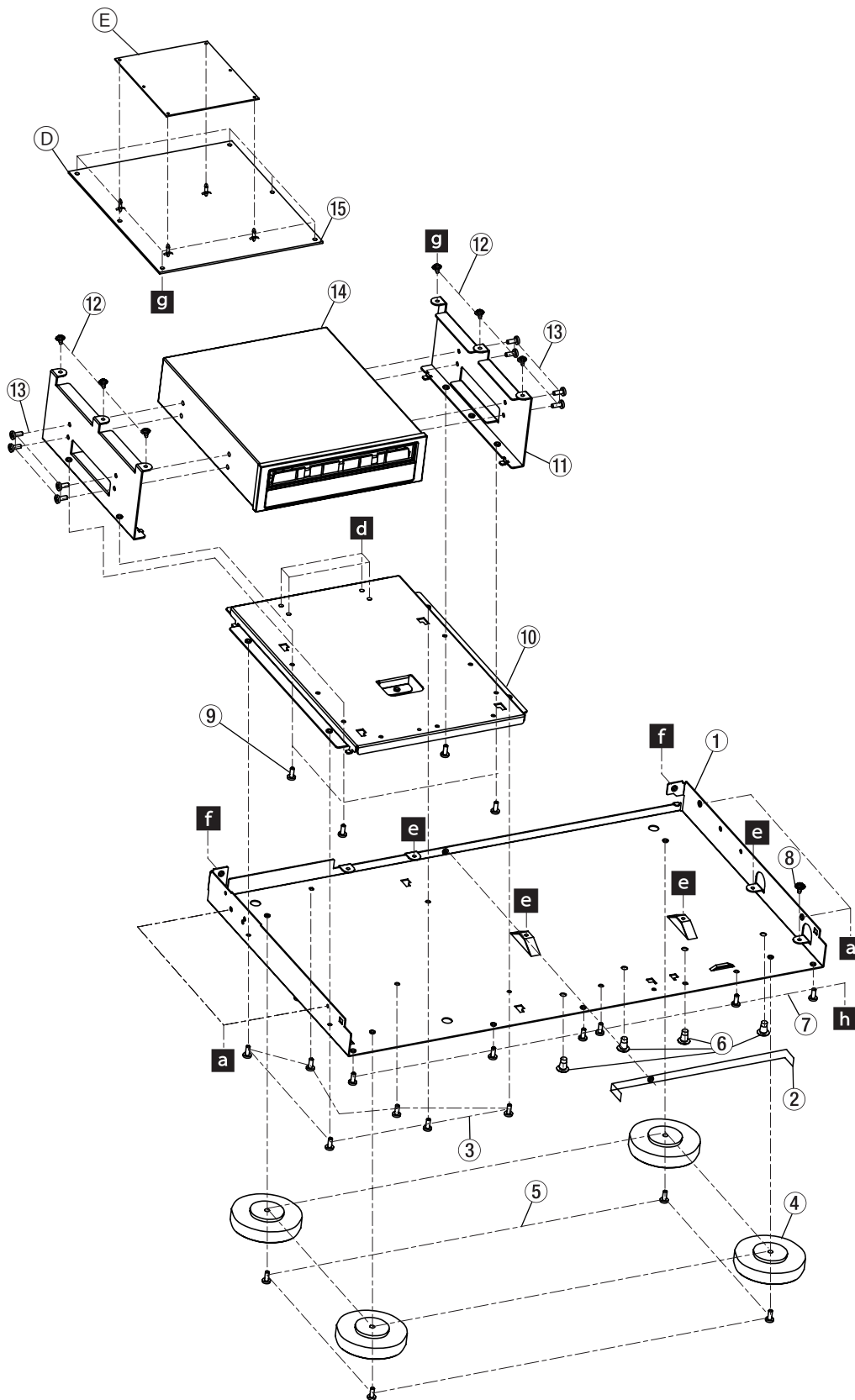
REF.NO.	PARTS NO.	DESCRIPTION .	QTY	REMARKS
44	3M0026420A	LID DOOR AD-800 G	1	BLACK
	3M0863600A	LID DOOR AD-RW900 S G	1	SILVER
45	3M0862900B	FRONT PANEL AD-RW900 B G	1	BLACK
	3M0862910A	FRONT PANEL AD-RW900 S G	1	SILVER
46	M02906100A	LINK,POWER CDA550 G	1	
47	3M0821700A	BUTTON,D6.5 AD800 G	1	BLACK
	3M0821710A	BUTTON D6.5 AD-RW900 S G	1	SILVER
48	3M0011200A	DAMPER,(SD-385)	1	
49	B00208908A	SCREW,PPPU 3*8 FZB G	1	DAMPER
50	3M0025100A	BUTTON,EJECT AD500 G	1	BLACK
	3M0025110A	BUTTON EJECT AD-RW900 S G	1	SILVER
51	3M0863100A	BUTTON MAIN AD-RW900 B G	1	BLACK
	3M0863110A	BUTTON MAIN AD-RW900 S G	1	SILVER
52	3M0821600A	BUTTON,SKIP AD800 G	2	BLACK
	3M0821610A	BUTTON SKIP AD-RW900 S G	2	SILVER
53	B00199708A	SCREW,BPB 3*8 FZB G	2	
54	B00199008A	SCREW,BPP 3*8 FZC G	5	
55	B00199008A	SCREW,BPP 3*8 FZC G	2	
56	B00247300A	SCREW,PPSP 4*1.3FZC G	1	HOOK EJ-BKTE
57	3M0030000E	HOOK,EJECT B W-780R G	1	
58	M02719700A	BRACKET,EJECT B G	1	
59	B00199008A	SCREW,BPP 3*8 FZC G	2	
60	B00199008A	SCREW,BPP 3*8 FZC G	3	
61	M02719300B	LEVER,CTRL	1	
62	M02719400B	LEVER,STPR L G	1	
63	M02520800A	TRSN SPR,EJECT 202MK4 G	1	
64	B00197806A	SCREW,PPSU 3*6 FZC G	2	
65	M02905000B	BRACKET,PCB PH 550 G	1	
66	B00199008A	SCREW,BPP 3*8 FZC G	2	BKTPH-FNTPNL
67	B00198806A	SCREW,BPP M2*6 FZC G	4	
68	M02904800B	BRACKET,PCB PWR 550 G	1	
69	M02753900D	MECH ASSY,RP CRP42606A V	1	
(69')	E95335700A	GATHER PCBA,SER 222SL2 G	1	Back side of mech assy
70	3E000350	POWER CORD,UK G	1	△ [UK]
	3E009230	POWER CORD,UL/CSA SPEI-G	1	△ [T/C]
	3E015210	POWER CORD,EUR-G	1	△ [EUR]
	E0140770	POWER CORD,JPN PSE 7A G	1	△ [JPN]
A	(3E90100700B)	PCB,TAPE AD-RW900 G	1	"PCB, GATHER-A AD-RW900 G / PCB, GATHER-B AD-RW900 G" on page 37
B	(3E90100400A)	PCB,OPTICAL AD-RW900 G	1	"PCB GATHER, CPU AD-RW900 G / PCB, GATHER-A AD-RW900 G" on page 36
C	(3E90100900A)	PCB,TRANS AD-RW900 G	1	"PCB, GATHER-A AD-RW900 G / PCB, GATHER-B AD-RW900 G" on page 37
D	(3E90100300A)	PCB,IF AD-RW900 G	1	"PCB GATHER, CPU AD-RW900 G / PCB, GATHER-A AD-RW900 G" on page 36
E	(3E90100100B)	PCB,CPU AD-RW900 G	1	"PCB GATHER, CPU AD-RW900 G / PCB, GATHER-A AD-RW900 G" on page 36
F	(3E90101000A)	PCB,PWR-SW AD-RW900 G	1	"PCB, GATHER-A AD-RW900 G / PCB, GATHER-B AD-RW900 G" on page 37
G	(3E90100800A)	PCB,PHONE AD-RW900 G	1	"PCB, GATHER-A AD-RW900 G / PCB, GATHER-B AD-RW900 G" on page 37
H	(3E90100500A)	PCB,KEY AD-RW900 G	1	"PCB GATHER, CPU AD-RW900 G / PCB, GATHER-A AD-RW900 G" on page 36
I	(3E0835800A)	LCM,BLG15101-02-DSBW G	1	

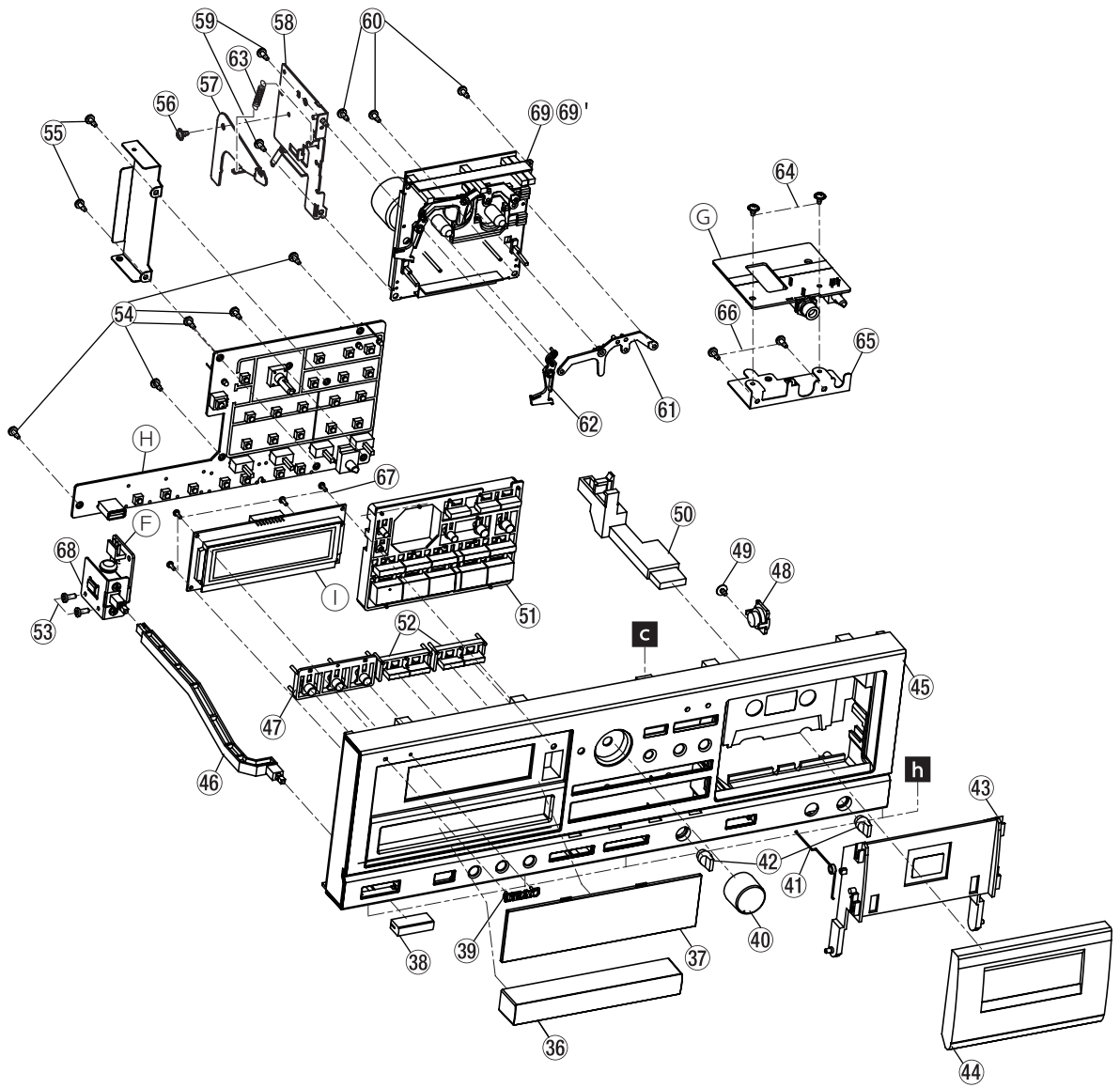


# Exploded Views and Parts List (AD-RW900E)

分解图







**CAUTION** Part with numbers in parentheses ( ) cannot be ordered.**注意** "()"付き品番は、発注できません。**Exploded View Parts List**

REF.NO.	PARTS NO.	DESCRIPTION .	QTY	REMARKS
1	M02904500B	CHASSIS,MAIN CDA550 G	1	
2	M03032700A	SHEET,BARRIER 8*120 TP G	1	
3	B00199708A	SCREW,BPB 3*8 FZB G	6	
4	3M0047200A	FOOT ASSY, SD-455 G	4	
5	B00199708A	SCREW,BPB 3*8 FZB G	4	FOOT
6	M02941400A	SPACER,SUPPORT RAD-8 G	4	
7	B00199708A	SCREW,BPB 3*8 FZB G	6	
8	B00198306A	SCREW,BPS 3*6 FZC G	1	
9	B00199708A	SCREW,BPB 3*8 FZB G	4	CHA-BASE CD
10	3M0863700A	BASE CD MECHA AD-RW900 G	1	
11	3M0863800A	BRACKET CD MECHA AD-RW900 G	2	
12	B00197806A	SCREW,PPSU 3*6 FZC G	6	
13	B00198306A	SCREW,BPS 3*6 FZC G	8	
14	3M0880200A	DVDRW MECH AD-7290H-TE G	1	(CD MECHA)
15	3M0875000A	HOLDER,LCG-6	4	
16	B00197806A	SCREW,PPSU 3*6 FZC G	4	PCBMAIN-CHA
17	3E0836000A	TRANS POWER,AD-RW900 G	1	[AC 230V]
18	B00199508A	SCREW,BPB 4*8 FZC G	4	PT-BASE CD
19	3M0259000B	WASHER PC 6*3*0.5 G	2	
20	3M0878700A	BRACKET IC AD-RW900 G	1	
21	3E040130	SW,SL14-22AH-0AN G	(1)	Only [T/C, EX] model
22	3M0886900A	REAR PANEL AD-RW900 EUR G	1	[EUR]
23	3M000880	BUSHING, #2271(CSA)-G	1	
24	B00199808A	SCREW,BPB 4*8 FZB G	(2)	Only [T/C, EX] model
25	B00198608A	SCREW,BPS 3*8 FZB G	2	
26	B00199708A	SCREW,BPB 3*8 FZB G	2	
27	B00199708A	SCREW,BPB 3*8 FZB G	4	
28	B00199708A	SCREW,BPB 3*8 FZB G	3	
29	3E017240G	GND TERMINAL	1	
30	B00199708A	SCREW,BPB 3*8 FZB G	3	
31	3M0025300C	BRACKET,PCB(A) G AD500	1	
32	3M0863410A	BONNET AD-RW900 B G	1	BLACK
	3M0863400A	BONNET AD-RW900 S G	1	SILVER
33	B00197606A	SCREW,PPSU 3*6 FZB G	4	
34	B00170608A	SCREW,VPCR 3*8 FZB G	3	
35	M02788000A	T LK WSHR,3D G	4	
36	3M0863000A	TRAY PANEL AD-RW900 B G	1	BLACK
	3M0863010A	TRAY PANEL AD-RW900 S G	1	SILVER
37	3M0863300A	WINDOW LCD AD-RW900 G	1	
38	3M0821800A	BUTTON,POWER AD800 G	1	BLACK
	3M0821810A	BUTTON POWER AD-RW900 S G	1	SILVER
39	3M0051640A	TEAC BADGE	1	
40	3M0024620A	KNOB REC VOL AD-800 G	1	BLACK
	3M0863500A	KNOB REC VOL AD-RW900 S G	1	SILVER
41	3M0010500B	TORSION SPRING,CASE II G	1	
42	3M0024800A	KNOB,PHONE VOLUME AD500 G	2	BLACK
	3M0024850A	KNOB,PHONE VOLUM(SLIVER)G	2	SILVER
43	3M0011100A	CASE,LEAD W-780R G	1	

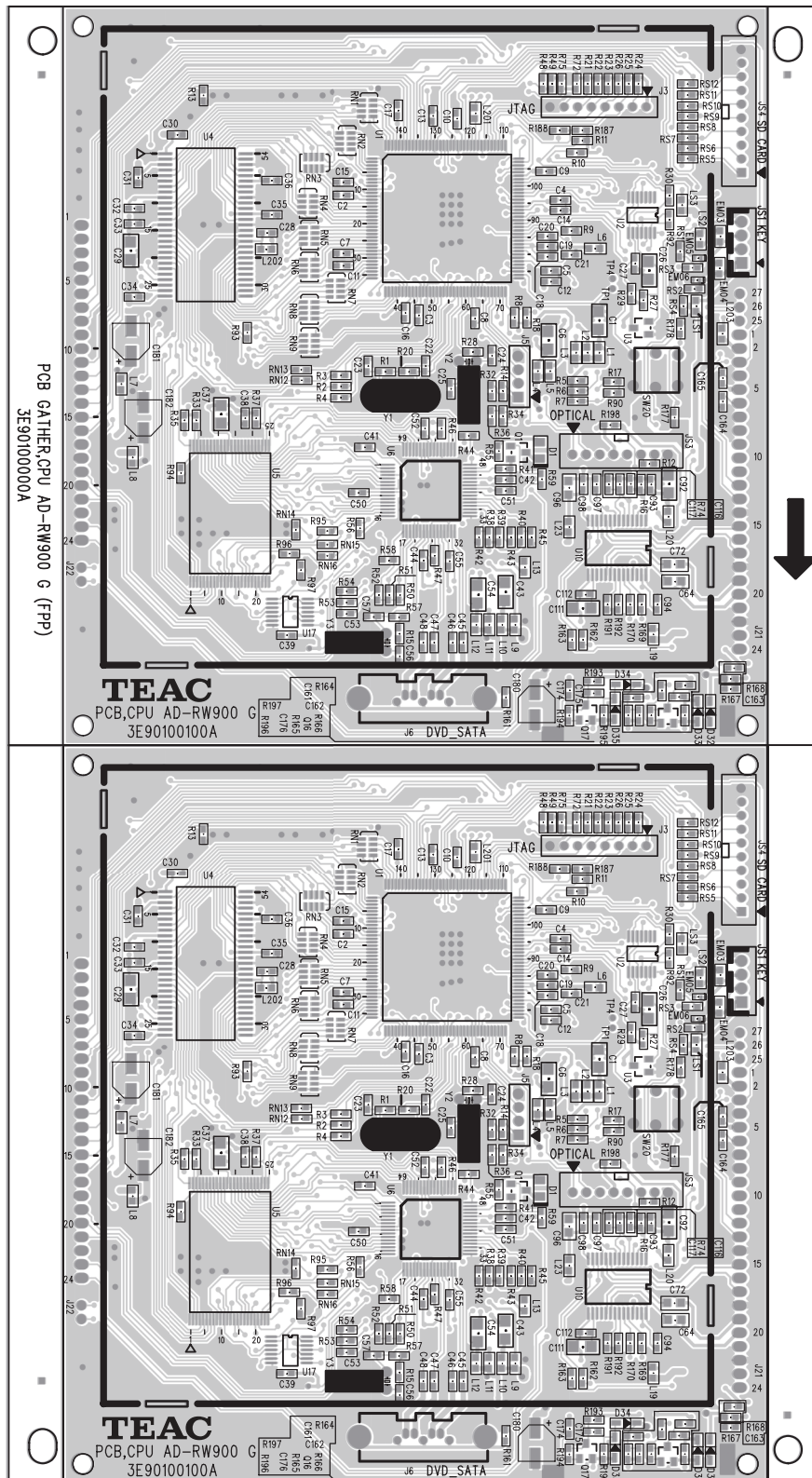
**CAUTION** Part with numbers in parentheses ( ) cannot be ordered.**注意** "()"付き品番は、発注できません。**Exploded View Parts List**

REF.NO.	PARTS NO.	DESCRIPTION .	QTY	REMARKS
44	3M0026420A	LID DOOR AD-800 G	1	BLACK
	3M0863600A	LID DOOR AD-RW900 S G	1	SILVER
45	3M0862900B	FRONT PANEL AD-RW900 B G	1	BLACK
	3M0862910A	FRONT PANEL AD-RW900 S G	1	SILVER
46	M02906100A	LINK,POWER CDA550 G	1	
47	3M0821700A	BUTTON,D6.5 AD800 G	1	BLACK
	3M0821710A	BUTTON D6.5 AD-RW900 S G	1	SILVER
48	3M0011200A	DAMPER,(SD-385)	1	
49	B00208908A	SCREW,PPPU 3*8 FZB G	1	DAMPER
50	3M0025100A	BUTTON,EJECT AD500 G	1	BLACK
	3M0025110A	BUTTON EJECT AD-RW900 S G	1	SILVER
51	3M0863100A	BUTTON MAIN AD-RW900 B G	1	
52	3M0821600A	BUTTON,SKIP AD800 G	2	BLACK
	3M0821610A	BUTTON SKIP AD-RW900 S G	2	SILVER
53	B00199708A	SCREW,BPB 3*8 FZB G	2	
54	B00199008A	SCREW,BPP 3*8 FZC G	5	
55	B00199008A	SCREW,BPP 3*8 FZC G	2	
56	B00247300A	SCREW,PPSP 4*1.3FZC G	1	HOOK EJ-BKTE
57	3M0030000E	HOOK,EJECT B W-780R G	1	
58	M02719700A	BRACKET,EJECT B G	1	
59	B00199008A	SCREW,BPP 3*8 FZC G	2	
60	B00199008A	SCREW,BPP 3*8 FZC G	3	
61	M02719300B	LEVER,CTRL	1	
62	M02719400B	LEVER,STPR L G	1	
63	M02520800A	TRSN SPR,EJECT 202MK4 G	1	
64	B00197806A	SCREW,PPSU 3*6 FZC G	2	
65	M02905000B	BRACKET,PCB PH 550 G	1	
66	B00199008A	SCREW,BPP 3*8 FZC G	2	BKTPH-FNTPNL
67	B00198806A	SCREW,BPP M2*6 FZC G	4	
68	M02904800B	BRACKET,PCB PWR 550 G	1	
69	M02753900D	MECH ASSY,RP CRP42606 V G	1	
(69')	E95335700A	GATHER PCBA,SER 222SL2 G	1	Back side of mech assy
70	B00199708A	SCREW,BPB 3*8 FZB G	3	
71	3E015210	POWER CORD,EUR-G	1	⚠ [EUR]
72	3M0842200A	FERRITE CORE B 16*11.5*8MM	1	
A	(3E90100700B)	PCB,TAPE AD-RW900 G	1	"PCB,GATHER-A AD-RW900 G / PCB,GATHER-B AD-RW900 G" on page 48
B	(3E90100400A)	PCB,OPTICAL AD-RW900 G	1	"PCB GATHER,CPU AD-RW900 G / PCB,GATHER-A AD-RW900 G" on page 47
C	(3E90100900A)	PCB,TRANS AD-RW900 G	1	"PCB,GATHER-A AD-RW900 G / PCB,GATHER-B AD-RW900 G" on page 48
D	(3E90100300A)	PCB,IF AD-RW900 G	1	"PCB, GATHER-A AD-RW900 G / PCB, GATHER-B AD-RW900 G" on page 37
E	(3E90100100B)	PCB,CPU AD-RW900 G	1	"PCB GATHER,CPU AD-RW900 G / PCB,GATHER-A AD-RW900 G" on page 47
F	(3E90101000A)	PCB,PWR-SW AD-RW900 G	1	"PCB,GATHER-A AD-RW900 G / PCB,GATHER-B AD-RW900 G" on page 48
G	(3E90100800A)	PCB,PHONE AD-RW900 G	1	"PCB,GATHER-A AD-RW900 G / PCB,GATHER-B AD-RW900 G" on page 48
H	(3E90100500A)	PCB,KEY AD-RW900 G	1	"PCB GATHER,CPU AD-RW900 G / PCB,GATHER-A AD-RW900 G" on page 47
I	(3E0835800A)	LCM,BLG15101-02-DSBW G	1	
J	(3E8000800A)	PCB,ErP2 AD-RW900 G	1	"PCB,GATHER-B AD-RW900 G / PCB GATHER,ErP2 AD-RW900 G" on page 49

# 9. PC Boards and Parts List

基板図とパーツリスト

PCB GATHER,CPU AD-RW900 G (FPP) (Side A)

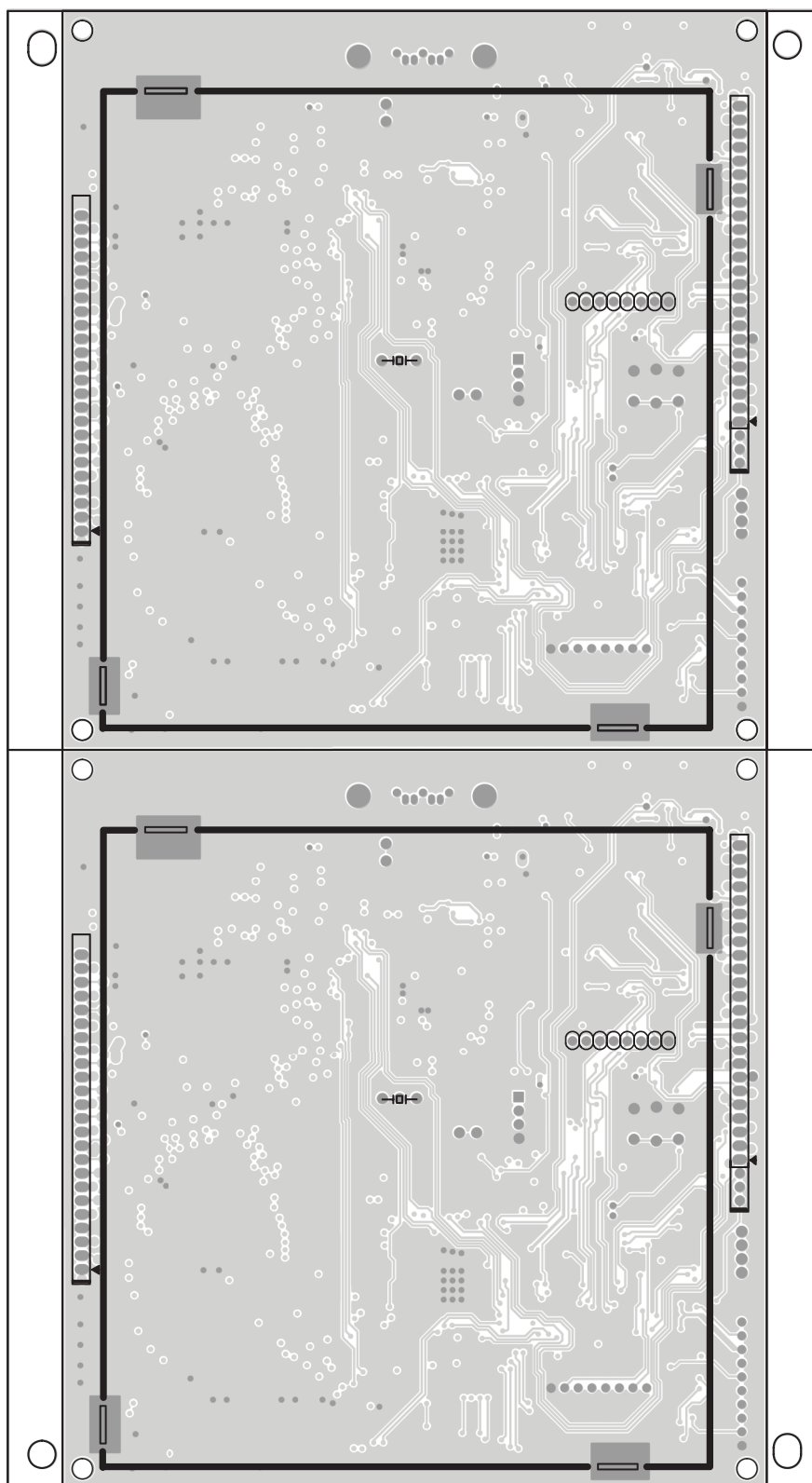


**CAUTION** The portion in the dashed box consists of service parts that need to be ordered using part numbers in Bold.

- 30 -

**注意** 破線部分は、太字品番で発注する補修部品になります。

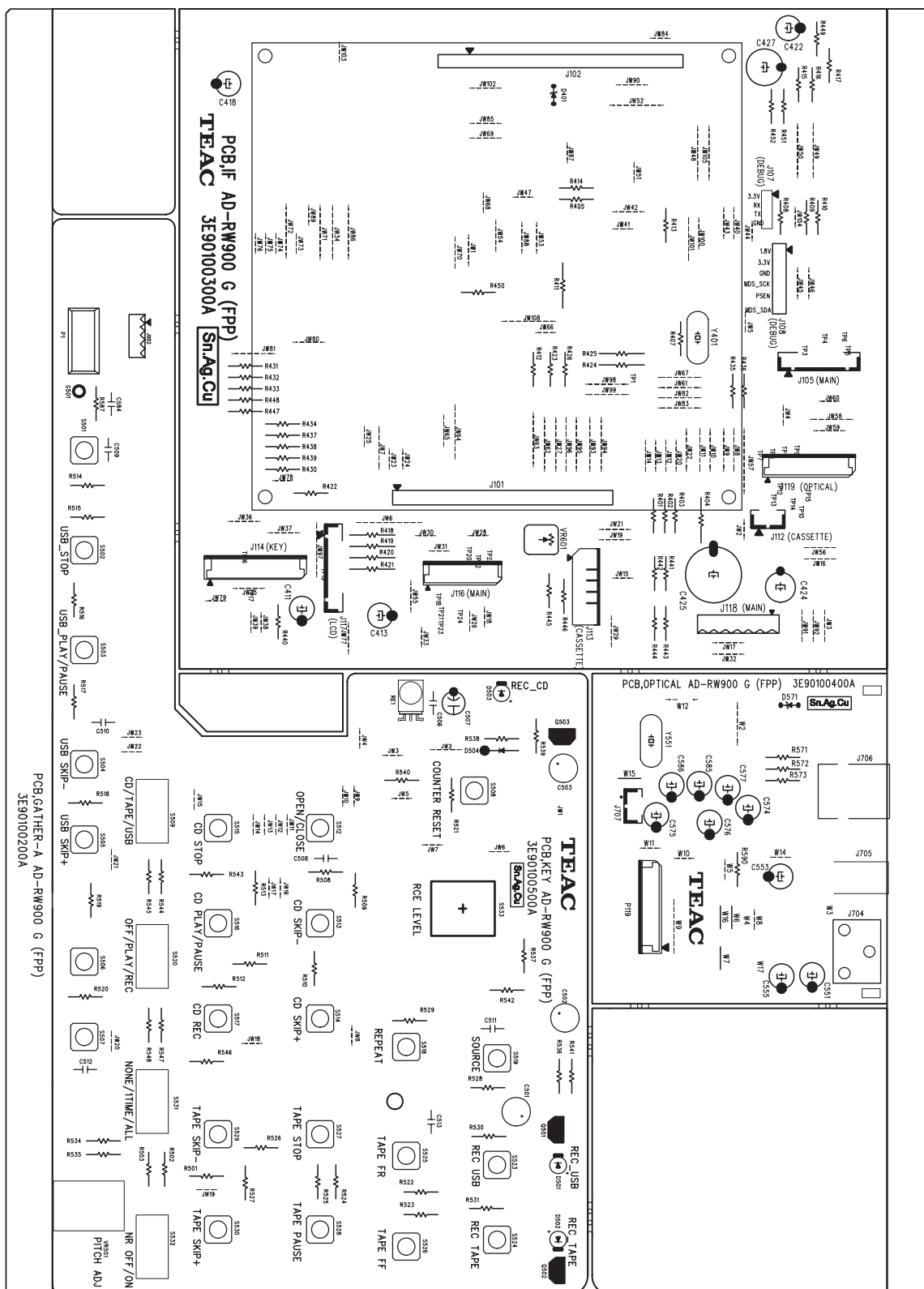
## PCB GATHER,CPU AD-RW900 G (FPP) (Side B)



**CAUTION** The portion in the dashed box consists of service parts that need to be ordered using part numbers in Bold.

**注意** 破線部分は、太字品番で発注する補修部品になります。

PCB,GATHER-A AD-RW900 G (FPP) (Side A)

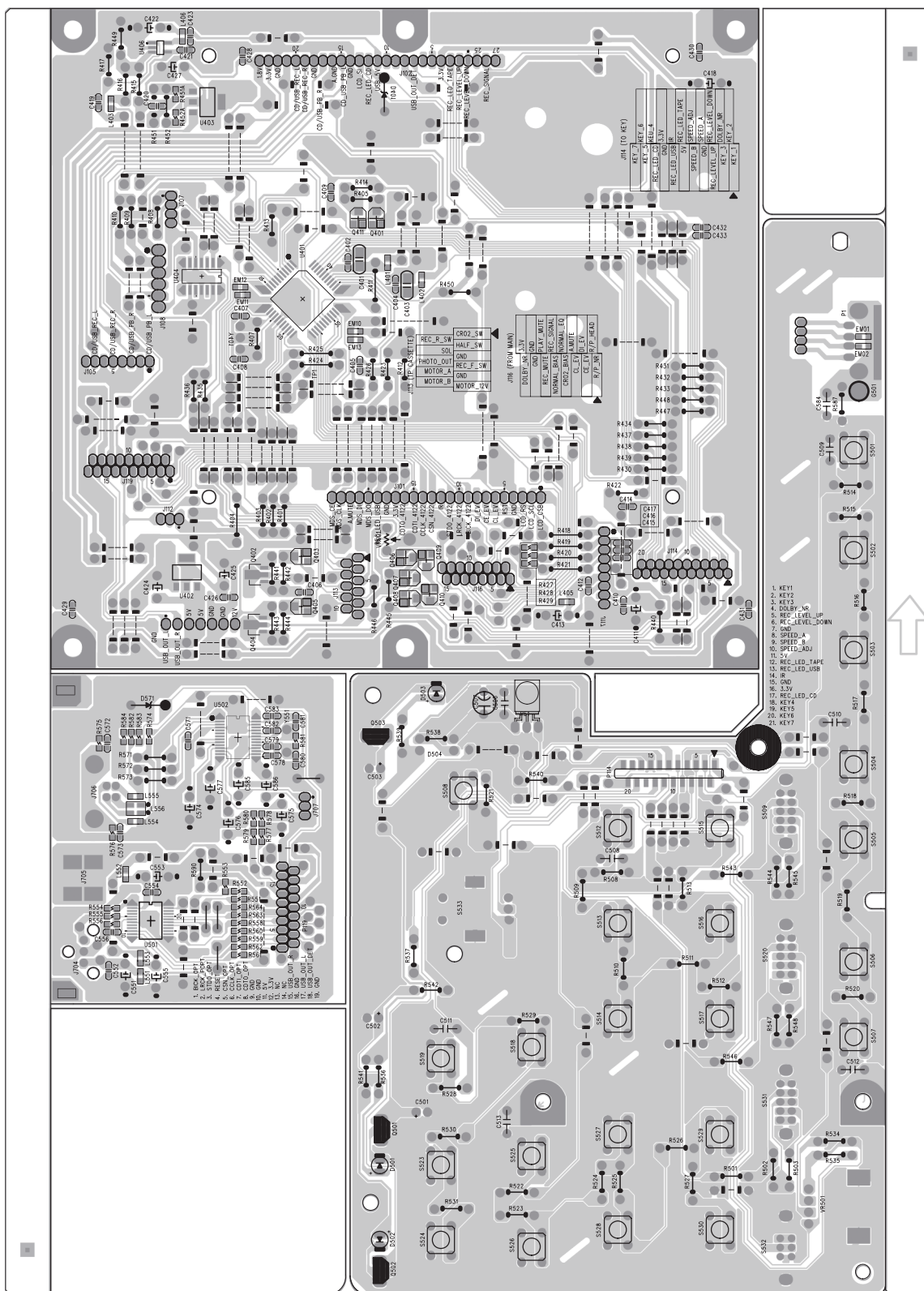


**CAUTION** The portion in the dashed box consists of service parts that need to be ordered using part numbers in Bold.

**注意** 破線部分は、太字品番で発注する補修部品になります。



PCB,GATHER-A AD-RW900 G (FPP) (Side B)

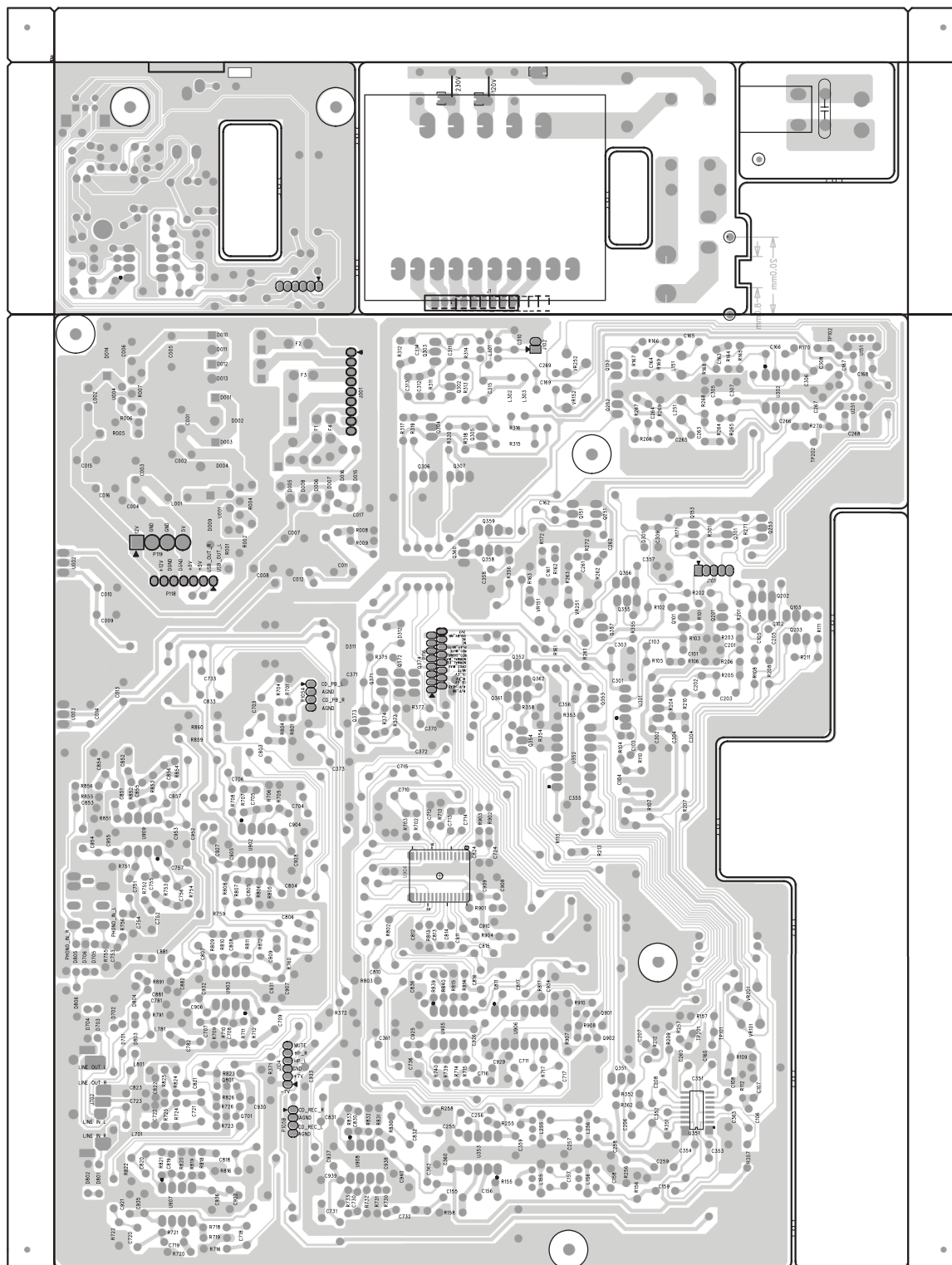


**CAUTION** The portion in the dashed box consists of service parts that need to be ordered using part numbers in Bold.

**注意** 破線部分は、太字品番で発注する補修部品になります。



PCB,GATHER-B AD-RW900 G (FPP) (Side B)



**CAUTION** The portion in the dashed box consists of service parts that need to be ordered using part numbers in Bold.

**注意** 破線部分は、太字品番で発注する補修部品になります。

**CAUTION** Part with numbers in parentheses ( ) cannot be ordered. If you want to order service parts, be sure to use "Child" part numbers (numbers in Bold), which refer to individual parts of a parent part.

**注意** "()"付き品番は、発注できません。補修部品を発注する際は、太字品番で発注してください。

**PCB GATHER, CPU AD-RW900 G / PCB, GATHER-A AD-RW900 G**

集合 CPU / 集合 -A 基板

REF.NO.	PARTS NO.	DESCRIPTION .	REMARKS	REF.NO.	PARTS NO.	DESCRIPTION .	REMARKS
	<b>3E95100193A</b>	<b>PCBA,CPU USA/JPN AD-RW900 G</b>			<b>3E95100200A</b>	<b>PCBA,GATHER-A AD-RW900 G</b>	
		<i>PCBA,S-CPU AD-RW900 G</i>				<i>PCBA,S-GATHER A AD-RW900 G</i>	
LS1	E0081244	COIL,BLM18PG600SN1D G		L401	E0081244	COIL,BLM18PG600SN1D G	
LS2	E0081244	COIL,BLM18PG600SN1D G		L402	E0081244	COIL,BLM18PG600SN1D G	
LS3	E0081244	COIL,BLM18PG600SN1D G		L405	E0081244	COIL,BLM18PG600SN1D G	
L1	E0081244	COIL,BLM18PG600SN1D G	⚠	L406	E0081244	COIL,BLM18PG600SN1D G	
L2	E0081244	COIL,BLM18PG600SN1D G	⚠	L403	E0081244	COIL,BLM18PG600SN1D G	
L3	E0081244	COIL,BLM18PG600SN1D G					
L4	E0081244	COIL,BLM18PG600SN1D G		Q408	S0041574	TRANSISTER,DTA124EUA G	
L5	E0081244	COIL,BLM18PG600SN1D G		Q410	S0041574	TRANSISTER,DTA124EUA G	
L6	E0081244	COIL,BLM18PG600SN1D G		Q401	S0065074	TRANSISTOR,DTC124EUA TP G	
L7	E0081244	COIL,BLM18PG600SN1D G		Q403	S0065074	TRANSISTOR,DTC124EUA TP G	
L8	E0081244	COIL,BLM18PG600SN1D G		Q405	S0065074	TRANSISTOR,DTC124EUA TP G	
L9	E0081244	COIL,BLM18PG600SN1D G		Q406	S0065074	TRANSISTOR,DTC124EUA TP G	
L10	E0081244	COIL,BLM18PG600SN1D G		Q407	S0065074	TRANSISTOR,DTC124EUA TP G	
L11	E0081244	COIL,BLM18PG600SN1D G		Q409	S0065074	TRANSISTOR,DTC124EUA TP G	
L12	E0081244	COIL,BLM18PG600SN1D G		Q411	S0065074	TRANSISTOR,DTC124EUA TP G	
L13	E0081244	COIL,BLM18PG600SN1D G		Q402	S0075364	TRANSISTER,2SB1188 G	
L20	E0081244	COIL,BLM18PG600SN1D G		Q404	S0075364	TRANSISTER,2SB1188 G	
L23	E0081244	COIL,BLM18PG600SN1D G					
L201	E0081244	COIL,BLM18PG600SN1D G		U404	3S039034	IC,SN74LVC14ADR G	
L202	R0156404	RD,1/10W 100 OHM J0603G		U406	3S038914	IC,RT9702 GB G	
L203	E0081244	COIL,BLM18PG600SN1D G		U403	3S038834	IC,AMS1117-1.8 SOT-223 G	
L19	C0074994	CC,X7R 16V 1.0UF K T0603G		U402	3S039024	IC,D1117-3V3 G	
L19	C0074994	CC,X7R 16V 1.0UF K T0603G		U401	3S0400900A	IC,GC89L581A0 OR GC89L591A0 G	
					3S039954	IC,GC89L581A0 G	
					3S040084	IC,GC89L591A0 G	
U10	3S039984	IC,WM8731SEDSRV G					
U5	<b>3E0835600A</b>	<b>CPU ASSY,CPU AD-RW900 G</b>					
U1	3S039944	IC,TCC8601 QFP144-3 G	⚠	L551	E0081244	COIL,BLM18PG600SN1D G	
U10	3S039984	IC,WM8731SEDSRV G		L552	E0081244	COIL,BLM18PG600SN1D G	
U17	3S039974	IC,SN74HC32PWR G		L553	E0081244	COIL,BLM18PG600SN1D G	
U1	3S039944	IC,TCC8601 QFP144-3 G	⚠	L554	E0081244	COIL,BLM18PG600SN1D G	
U3	S0095154	IC,D7029-2V9 G	⚠				
U17	3S039974	IC,SN74HC32PWR G		U501	S0059584	IC,AK4117VF G	
U6	S0082443	IC,JMH330APC1-TGCC		U502	S0084354	IC,PCM2900BDBR G	
U4	S0089163	IC,M12L128168A-7T-G2T G	⚠				
U3	S0095154	IC,D7029-2V9 G	⚠	EM001	C0071804	CC,18V 3PF M EZJ G	
U6	S0082443	IC,JMH330APC1-TGCC		EM002	C0071804	CC,18V 3PF M EZJ G	
EM006	S0086044	ZENER DIO,CDZCT2R6.8B G				<i>PCBA,A-GATHER A AD-RW900 G</i>	
EM005	S0086044	ZENER DIO,CDZCT2R6.8B G		D504	S0067021	DIODE,1SS133 T-77 G	
U4	S0089163	IC,M12L128168A-7T-G2T G	⚠	D401	3S002041	ZDI,MTZJ3.3B T-77	
EM003	C0071804	CC,18V 3PF M EZJ G		D571	3S002041	ZDI,MTZJ3.3B T-77	
EM006	S0086044	ZENER DIO,CDZCT2R6.8B G				<i>PCBA,T-GATHER A AD-RW900 G</i>	
EM004	C0071804	CC,18V 3PF M EZJ G		S501	E0127100	SW,TACT SKHHAM2520 G	
EM005	S0086044	ZENER DIO,CDZCT2R6.8B G		S502	E0127100	SW,TACT SKHHAM2520 G	
EM003	C0071804	CC,18V 3PF M EZJ G		S503	E0127100	SW,TACT SKHHAM2520 G	
EM004	C0071804	CC,18V 3PF M EZJ G		S504	E0127100	SW,TACT SKHHAM2520 G	
		<i>PCBA,T-CPU AD-RW900 G</i>		S505	E0127100	SW,TACT SKHHAM2520 G	
Y1	3E083620	XTAL,12MHZ 18PF HC49S G		S506	E0127100	SW,TACT SKHHAM2520 G	
Y3	3E083610	XTAL,25MHZ 18PF JU308 G		S507	E0127100	SW,TACT SKHHAM2520 G	
Y2	E0124762	XTAL,32.768K NC38(6.3PF)G		S508	E0127100	SW,TACT SKHHAM2520 G	
JS1	E0119750	CONNECTOR,B 4B-PH-K-S G		S512	E0127100	SW,TACT SKHHAM2520 G	
J6	E0170100	CONN,WATK-07A1L1BU3		S513	E0127100	SW,TACT SKHHAM2520 G	
J21	3E083580	PIN HEADER,27PIN-2210S27 G		S514	E0127100	SW,TACT SKHHAM2520 G	
J22	3E083570	PIN HEADER,24PIN-2210S24 G		S515	E0127100	SW,TACT SKHHAM2520 G	
	A0008800	CREAM SOLDER,S70G-SX		S516	E0127100	SW,TACT SKHHAM2520 G	
				S517	E0127100	SW,TACT SKHHAM2520 G	
				S518	E0127100	SW,TACT SKHHAM2520 G	

**CAUTION** Part with numbers in parentheses ( ) cannot be ordered. If you want to order service parts, be sure to use "Child" part numbers (numbers in Bold), which refer to individual parts of a parent part.

**注意** "( )"付き品番は、発注できません。補修部品を発注する際は、太字品番で発注してください。

**PCB, GATHER-A AD-RW900 G / PCB, GATHER-B AD-RW900 G**

集合 -A / 集合 -B 基板

REF.NO.	PARTS NO.	DESCRIPTION .	REMARKS	REF.NO.	PARTS NO.	DESCRIPTION .	REMARKS
S519	E0127100	SW,TACT SKHHAM2520 G		D013	S0070750	DIODE,LT2A05 G	⚠
S523	E0127100	SW,TACT SKHHAM2520 G		D001	35003540	DI,IN5404-M22 G	⚠
S524	E0127100	SW,TACT SKHHAM2520 G		D002	35003540	DI,IN5404-M22 G	⚠
S525	E0127100	SW,TACT SKHHAM2520 G		D003	35003540	DI,IN5404-M22 G	⚠
S526	E0127100	SW,TACT SKHHAM2520 G		D004	35003540	DI,IN5404-M22 G	⚠
S527	E0127100	SW,TACT SKHHAM2520 G		D005	S0071811	DI,1N4003-F TAPINGW=52 G	⚠
S528	E0127100	SW,TACT SKHHAM2520 G		D006	S0071811	DI,1N4003-F TAPINGW=52 G	⚠
S529	E0127100	SW,TACT SKHHAM2520 G		D007	S0071811	DI,1N4003-F TAPINGW=52 G	⚠
S530	E0127100	SW,TACT SKHHAM2520 G		D008	S0071811	DI,1N4003-F TAPINGW=52 G	⚠
S509	3E082260	SW,SSSF023NC1-TK1 G		D009	S0071811	DI,1N4003-F TAPINGW=52 G	⚠
S520	3E082260	SW,SSSF023NC1-TK1 G		D311	S0071811	DI,1N4003-F TAPINGW=52 G	
S531	3E082260	SW,SSSF023NC1-TK1 G		D009	35036301	DI,SCHOTTKY 60V2A D2S6M	
S532	E0174710	SW,SSSF022NC2-TK1 G		D014	35036301	DI,SCHOTTKY 60V2A D2S6M	
VR501	3R003980	VAR REG, 5KB RK11K113 CCG		F2	E0148702	CKT PTCT,1.35A RXEF135 TPG	⚠
S533	3E037310	ENCODER,EC12E2440A6 G		F3	E0148702	CKT PTCT,1.35A RXEF135 TPG	⚠
P1	3E082270	CONNECT USB04142051W00RS G		F1	E0148702	CKT PTCT,1.35A RXEF135 TPG	⚠
				F4	E0148702	CKT PTCT,1.35A RXEF135 TPG	⚠
D501	S0065830	LED,SLR-342VR G		U904	35038924	IC,LC75348M G	
D502	S0065830	LED,SLR-342VR G		U351	S0061754	@IC,HA12134AFEL-E G	
D503	S0065830	LED,SLR-342VR G		U352	S0078210	IC,BU4066BC G	
D501A	3M0125900A	HOLDER,LED H=13 G		U906	S0078210	IC,BU4066BC G	
P119	3E083880	CONNECTOR,19FMN-BTRK G		U302	S0064550	IC,NJM4558D G	
Y551	3E083620	XTAL,12MHZ 18PF HC49S G		U353	S0064550	IC,NJM4558D G	
J705	M01510100A	BRACKET,PCB-A G		U902	S0064550	IC,NJM4558D G	
J704	E0134440	OPT CONN,GP1FAV51RK0F G		U903	S0064550	IC,NJM4558D G	
J706	E0115760	CONN,USB UBB4RD14C4D G		U905	S0064550	IC,NJM4558D G	
G501	3M0876700B	SPRING USB AD-RW900 G		U907	S0064550	IC,NJM4558D G	
J108	E0102470	CONNECTOR,B 6B-EH(LF)(SN)		U908	S0064550	IC,NJM4558D G	
		<i>PCBA,R-GATHER A AD-RW900 G</i>		U301	35000280G	IC,UPC4570C-A G	
				U909	35000280G	IC,UPC4570C-A G	
Q501	S0094422	TRANSISTOR,DTC124ESA G		U002	S0075052	@IC,TA7807SB(TP,Q) G	⚠
Q502	S0094422	TRANSISTOR,DTC124ESA G		U003	S0075072	@IC,TA79007SB(TP,Q) G	⚠
Q503	S0094422	TRANSISTOR,DTC124ESA G		U004	S0082972	IC,BD9702CP-V5 G	⚠
				U001	S0082972	IC,BD9702CP-V5 G	⚠
	<b>3E95100601A</b>	<b>PCBA GATHER-B JPN AD-RW900 G</b>		L302	3E003711G	COIL, 10UH EC24-100K-T2 G	
	<b>3E95100650A</b>	<b>PCBA GATHER-B EUR AD-RW900 G</b>		L303	3E003711G	COIL, 10UH EC24-100K-T2 G	
	<b>3E95100693A</b>	<b>PCBA PHONE AD-RW900 G</b>		L151	3E003690G	COIL, #7159 8.2MH G	
		<i>PCBA,A-GATHER B AD-RW900 G</i>		L251	3E003690G	COIL, #7159 8.2MH G	
D301	S0067021	DIODE,1SS133 T-77 G		L001	E0130740	COIL,10UH 3.6A DR2W8*7 G	
D312	S0067021	DIODE,1SS133 T-77 G		L002	E0130740	COIL,10UH 3.6A DR2W8*7 G	
				U151	E01523300A	@VAR COIL,MPX 079418007 G	
L781	R0155291	RD,1/8W 10K OHMJ26MMG		U251	E01523300A	@VAR COIL,MPX 079418007 G	
L881	R0155291	RD,1/8W 10K OHMJ26MMG		L155	E01523300A	@VAR COIL,MPX 079418007 G	
L701	E0123241	JUMPER WIRE,5MM G		L255	E01523300A	@VAR COIL,MPX 079418007 G	
L801	E0123241	JUMPER WIRE,5MM G		L156	E01523400A	@VAR COIL,MPX 079418008 G	
				L256	E01523400A	@VAR COIL,MPX 079418008 G	
D711	E0123271	JUMPER WIRE,7.5MM G		TP101	E0127550	PIN,TEST G	
D811	E0123271	JUMPER WIRE,7.5MM G		TP102	E0127550	PIN,TEST G	
D712	C0072401	CC,B50V 1000PF K UP025 G		TP201	E0127550	PIN,TEST G	
D812	C0072401	CC,B50V 1000PF K UP025 G		TP202	E0127550	PIN,TEST G	
		<i>PCBA,T-GATHER B JPN AD-RW900 G</i>					
		<i>PCBA,T-GATHER B EUR AD-RW900 G</i>		L301	E01431500A	@TRANS,BIAS OSC 85KHZ G	
		<i>PCBA,T-GATHER B EX/T/C AD-RW900 G</i>		J703	3E017520	JACK,RJ-1106A-09-03E1B G	
D010	S0070750	DIODE,LT2A05 G	⚠	J702	E0123140	JACK,RJ-1073B-09-0320A G	
D011	S0070750	DIODE,LT2A05 G	⚠				
D012	S0070750	DIODE,LT2A05 G	⚠				

**CAUTION** Part with numbers in parentheses ( ) cannot be ordered. If you want to order service parts, be sure to use "Child" part numbers (numbers in Bold), which refer to individual parts of a parent part.

**注意** "()"付き品番は、発注できません。補修部品を発注する際は、太字品番で発注してください。

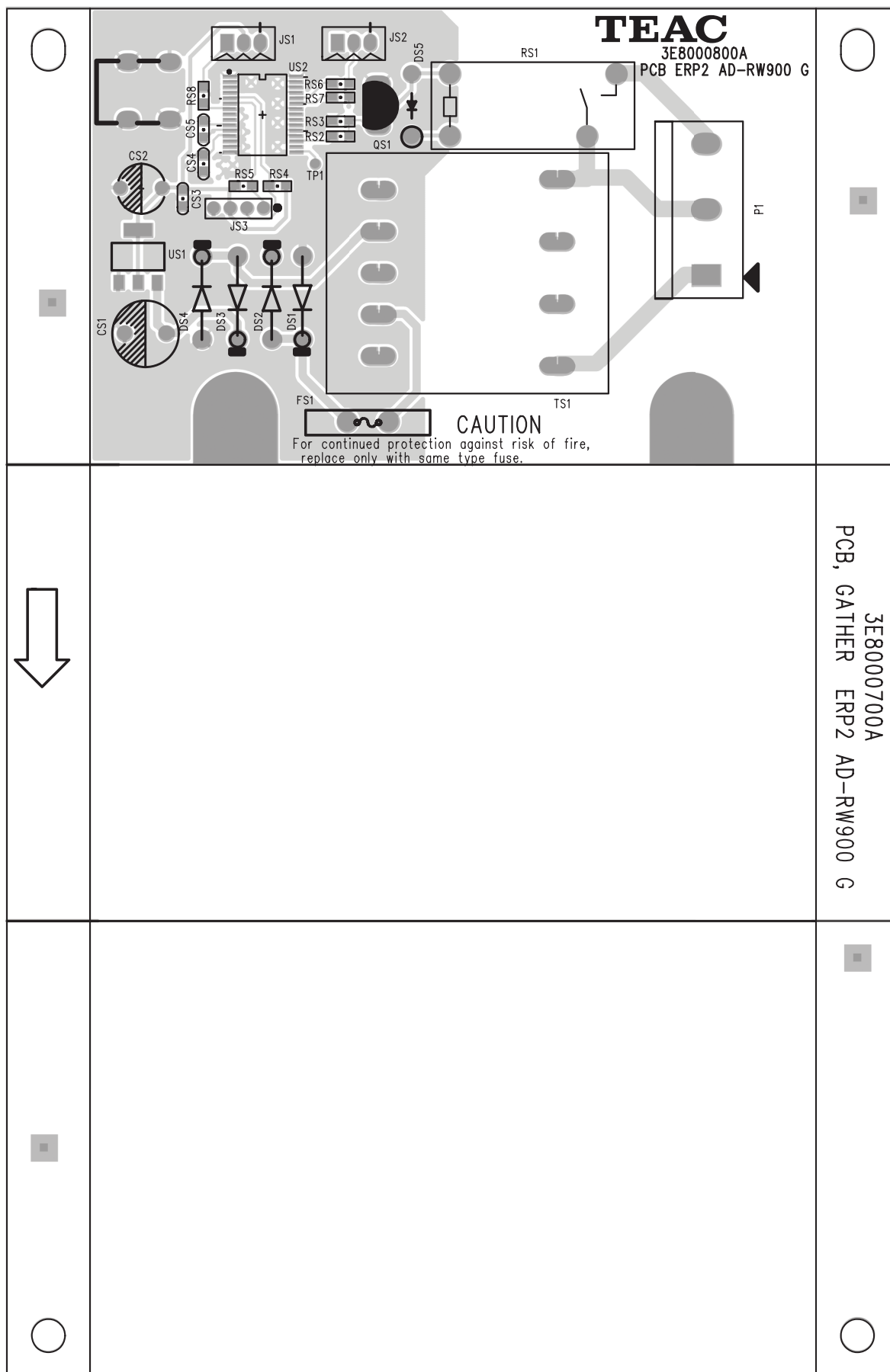
### PCB, GATHER-B AD-RW900 G

#### 集合 -B 基板

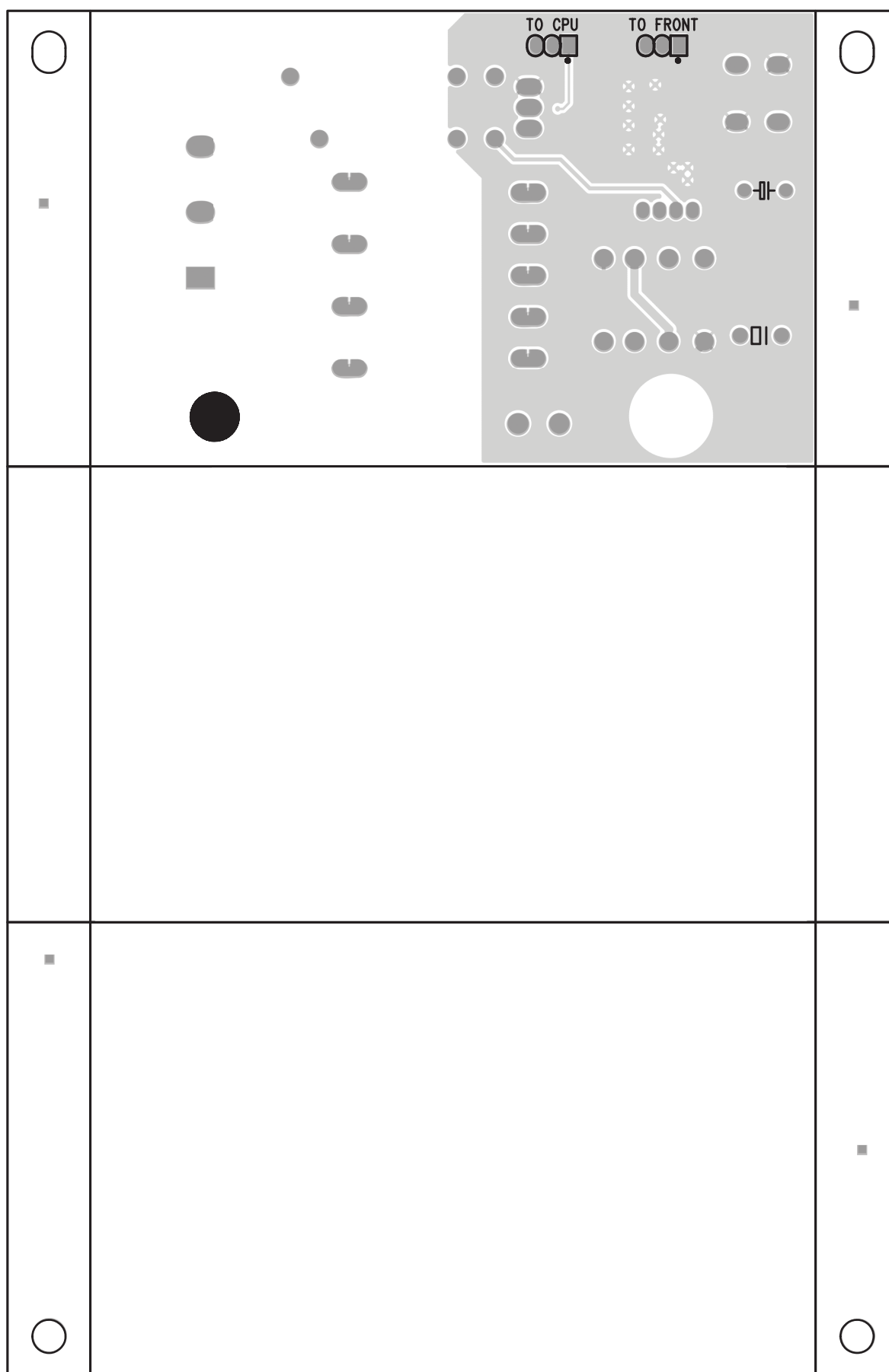
REF.NO.	PARTS NO.	DESCRIPTION .	REMARKS	REF.NO.	PARTS NO.	DESCRIPTION .	REMARKS
VR152	R0209450	VAR RES,VM6CK-PV15B100KG		Q351	S0094422	TRANSISTOR,DTC124ESA G	
VR252	R0209450	VAR RES,VM6CK-PV15B100KG		Q357	S0094422	TRANSISTOR,DTC124ESA G	
VR101	R0209440	VAR RES,VM6CK-PV15B10KG		Q360	S0094422	TRANSISTOR,DTC124ESA G	
VR201	R0209440	VAR RES,VM6CK-PV15B10KG		Q362	S0094422	TRANSISTOR,DTC124ESA G	
VR151	R0208340	VAR RES,VM6CKB22K/C G		Q372	S0094422	TRANSISTOR,DTC124ESA G	
VR251	R0208340	VAR RES,VM6CKB22K/C G		Q374	S0094422	TRANSISTOR,DTC124ESA G	
				Q901	S0094422	TRANSISTOR,DTC124ESA G	
J101 J102	E01547400A	HARN ASSY,HEAD A550 G		Q701	S0074832	TRANSISTOR,KTC2874BAT/PG	
P105 P105A	3E0824400A	WIRE ASSY,8P AUDIO AD-800 G		Q801	S0074832	TRANSISTOR,KTC2874BAT/PG	
P119	E0113030	CONNECTOR,B 4P-VH(LF)(SN)		Q761	S0074832	TRANSISTOR,KTC2874BAT/PG	
J104	E0119770	CONNECTOR,B 6B-PH-K-S G		Q861	S0074832	TRANSISTOR,KTC2874BAT/PG	
J001	3E083860	CONNECTOR,B 9B-EHA(LF)(SN) G					
P116	E0150690	CONNECTOR,16FMN-BTRK G					
P118	3E0839300A	WIRE ASSY,7P POWER AD-RW900 G					
L551	E0156850	FILTER,AC LINE LFH-601U G					
J551	E01524200A	HARN ASSY,AC PWR A550 G					
P001	E0178160	TERMINAL,LAPPING 2P G					
TR	3E0839200A	WIRE ASSY,9P TRANS POWER AD-RW900 G					
U910	3S000840	IC, BA4560 G					
J431	E0156560	JACK,PHONE JY6317A-02030G					
J105	3E0823900A	WIRE ASSY,6P H/P AD-800 G					
VR941	R0202790	VAR REG,50KAX2 RK09K12AG					
SW551	E0151430	SW,POWER SFDLB 11B7U G					
P551	E0111890	CONN,B2P3S-VH(LF)(SN)					
D015	S0071811	DI,1N4003-F TAPINGW=52 G					
D016	S0071811	DI,1N4003-F TAPINGW=52 G					
		<i>PCBA,R-GATHER B AD-RW900 G</i>					
Q304	S0066842	@TRANSISTOR,2SA1015GR-T G					
Q305	S0066842	@TRANSISTOR,2SA1015GR-T G					
Q373	S0066842	@TRANSISTOR,2SA1015GR-T G					
Q101	S0065482	@TR,2SC1815-GR(TPE2.F) GZO					
Q103	S0065482	@TR,2SC1815-GR(TPE2.F) GZO					
Q201	S0065482	@TR,2SC1815-GR(TPE2.F) GZO					
Q203	S0065482	@TR,2SC1815-GR(TPE2.F) GZO					
Q302	S0065482	@TR,2SC1815-GR(TPE2.F) GZO					
Q303	S0065482	@TR,2SC1815-GR(TPE2.F) GZO					
Q153	S0096582	TRANSISTOR,KTC3200GR G					
Q253	S0096582	TRANSISTOR,KTC3200GR G					
Q301	S0096582	TRANSISTOR,KTC3200GR G					
Q352	S0094402	TRANSISTOR,DTA124ESA G					
Q353	S0094402	TRANSISTOR,DTA124ESA G					
Q354	S0094402	TRANSISTOR,DTA124ESA G					
Q355	S0094402	TRANSISTOR,DTA124ESA G					
Q356	S0094402	TRANSISTOR,DTA124ESA G					
Q358	S0094402	TRANSISTOR,DTA124ESA G					
Q359	S0094402	TRANSISTOR,DTA124ESA G					
Q361	S0094402	TRANSISTOR,DTA124ESA G					
Q371	S0094402	TRANSISTOR,DTA124ESA G					
Q902	S0094402	TRANSISTOR,DTA124ESA G					
Q102	S0094422	TRANSISTOR,DTC124ESA G					
Q151	S0094422	TRANSISTOR,DTC124ESA G					
Q152	S0094422	TRANSISTOR,DTC124ESA G					
Q202	S0094422	TRANSISTOR,DTC124ESA G					
Q251	S0094422	TRANSISTOR,DTC124ESA G					
Q252	S0094422	TRANSISTOR,DTC124ESA G					
Q306	S0094422	TRANSISTOR,DTC124ESA G					
Q307	S0094422	TRANSISTOR,DTC124ESA G					

# PC Boards and Parts List (ERP)

## PCB GATHER,ErP2 AD-RW900 G (Side A)



## PCB GATHER,ErP2 AD-RW900 G (Side B)



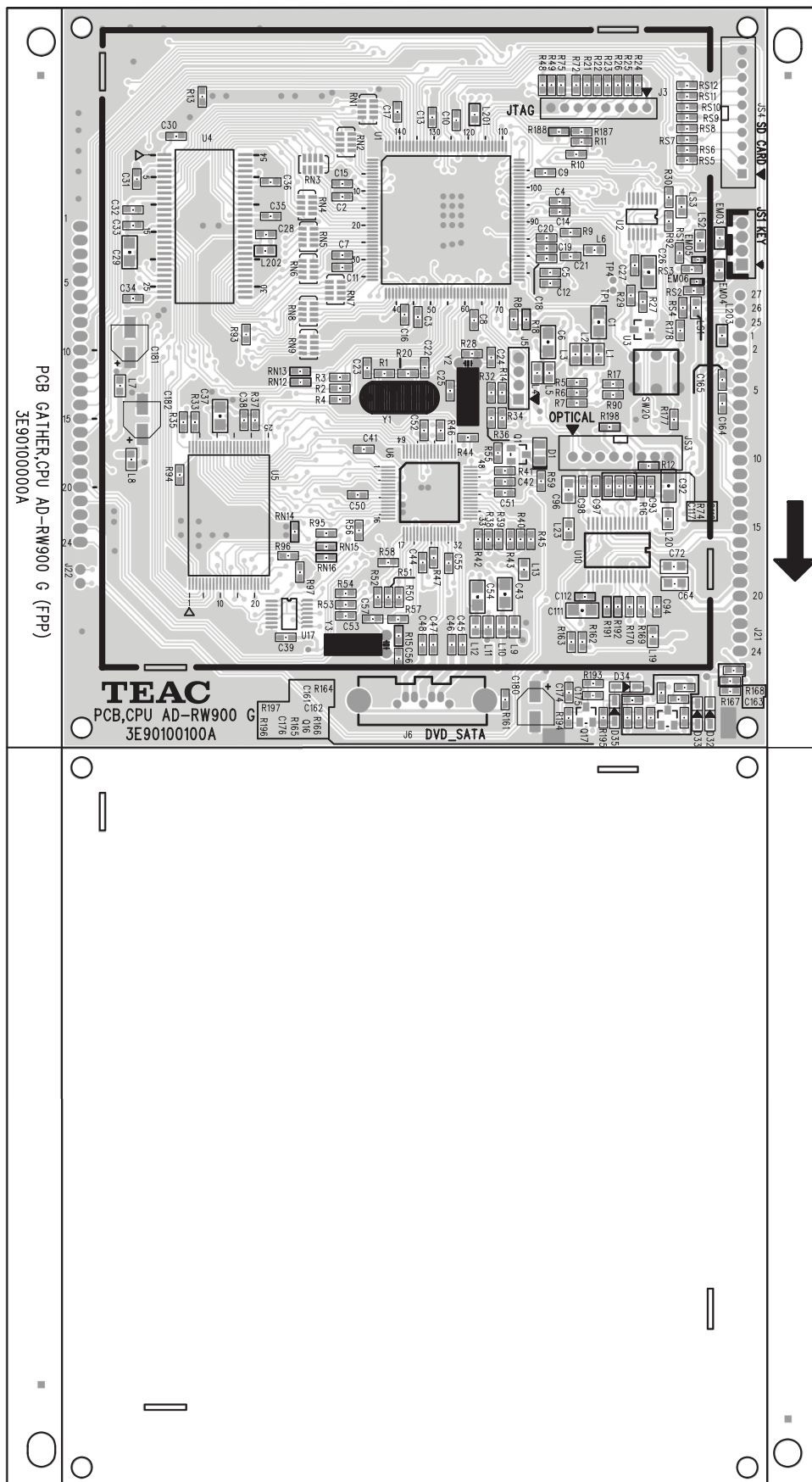
**CAUTION** The portion in the dashed box consists of service parts that need to be ordered using part numbers in Bold.

- 40 -

**注意** 破線部分は、太字品番で発注する補修部品になります。



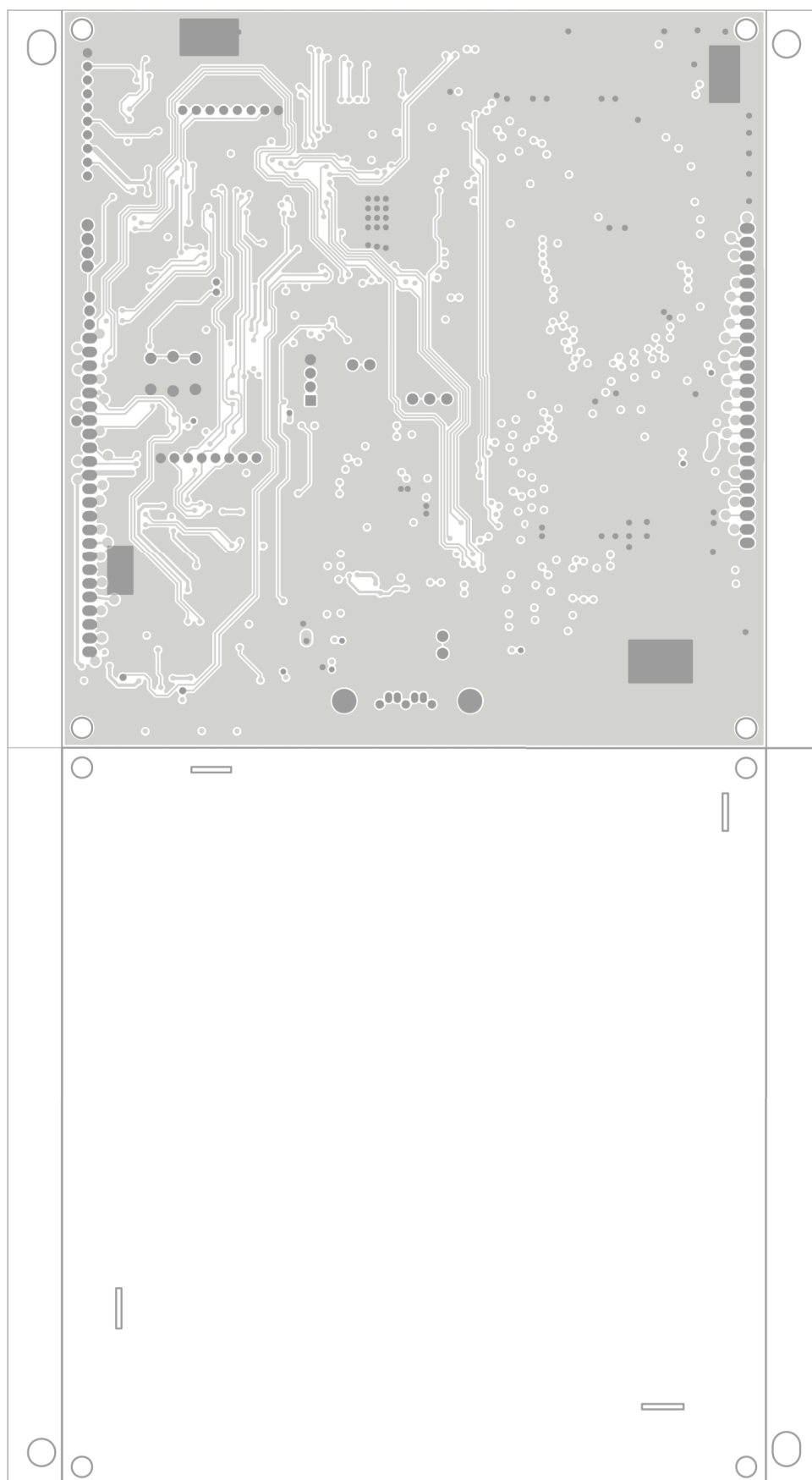
PCB GATHER, CPU AD-RW900 G (Side A)



**CAUTION** The portion in the dashed box consists of service parts that need to be ordered using part numbers in Bold.

**注意** 破線部分は、太字品番で発注する補修部品になります。

## PCB GATHER,CPU AD-RW900 G (Side B)

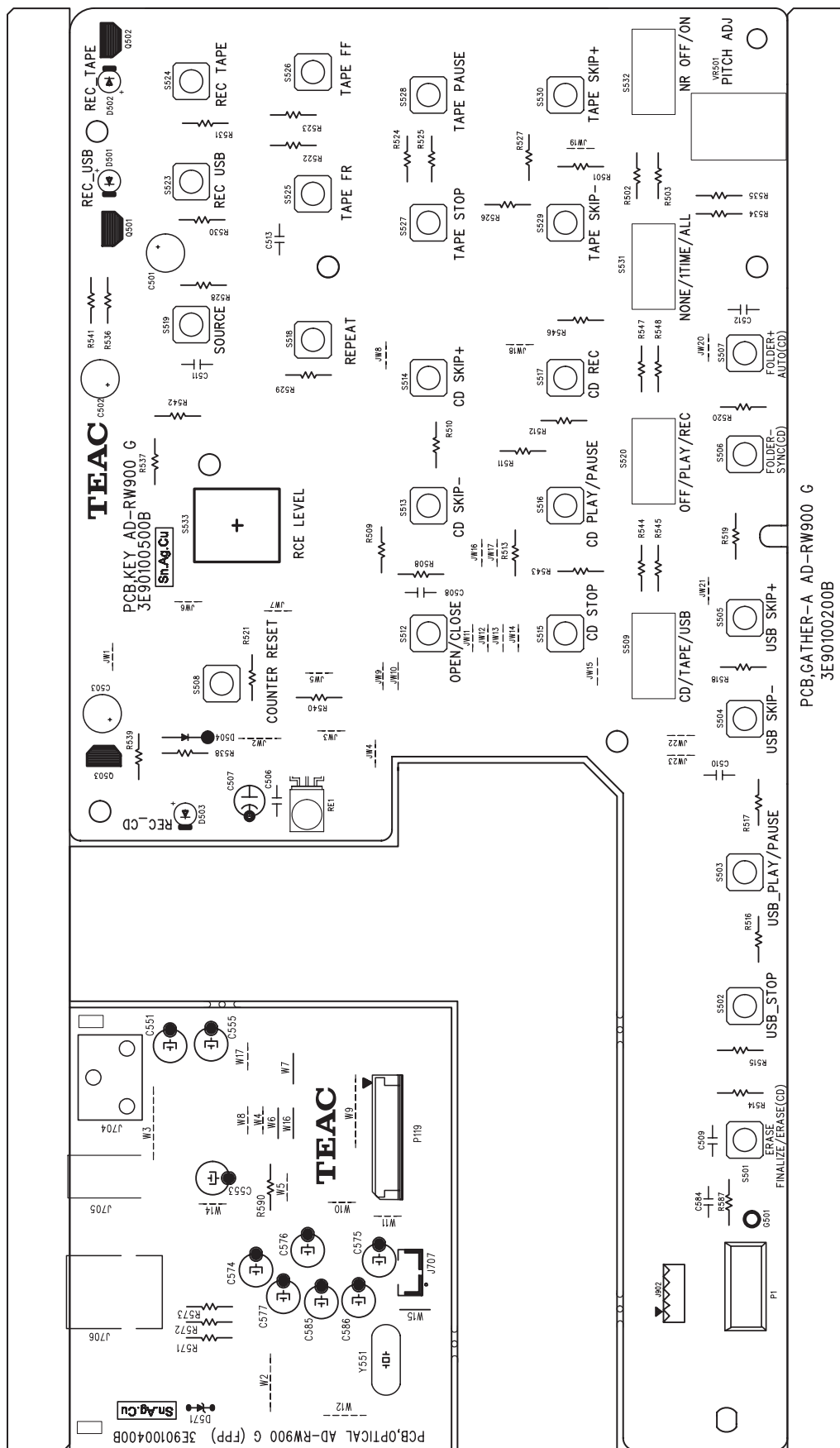


**CAUTION** The portion in the dashed box consists of service parts that need to be ordered using part numbers in Bold.

- 42 -

**注意** 破線部分は、太字品番で発注する補修部品になります。

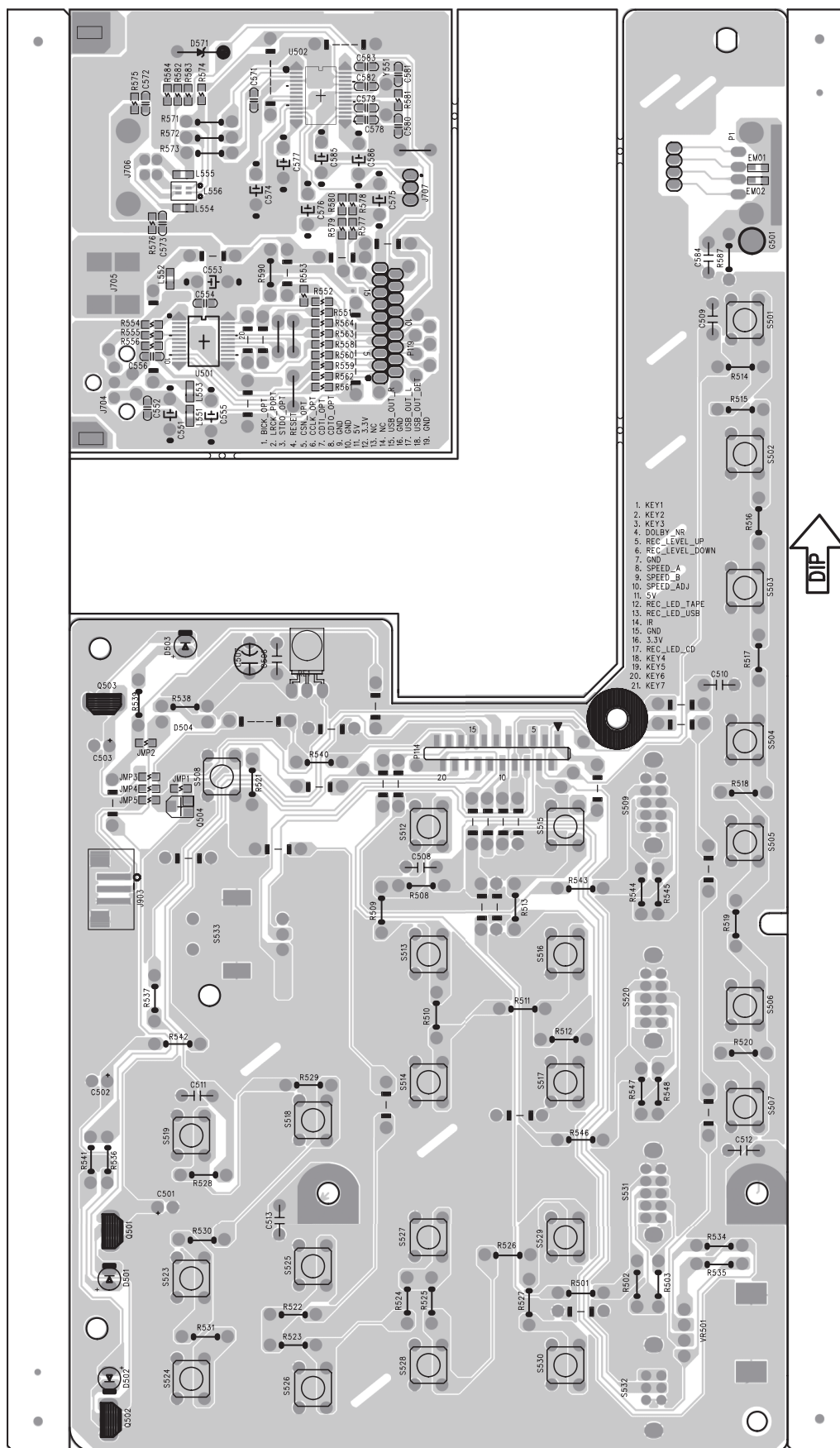
PCB,GATHER-A AD-RW900 G (Side A)



**CAUTION** The portion in the dashed box consists of service parts that need to be ordered using part numbers in Bold.

**注意** 破線部分は、太字品番で発注する補修部品になります。

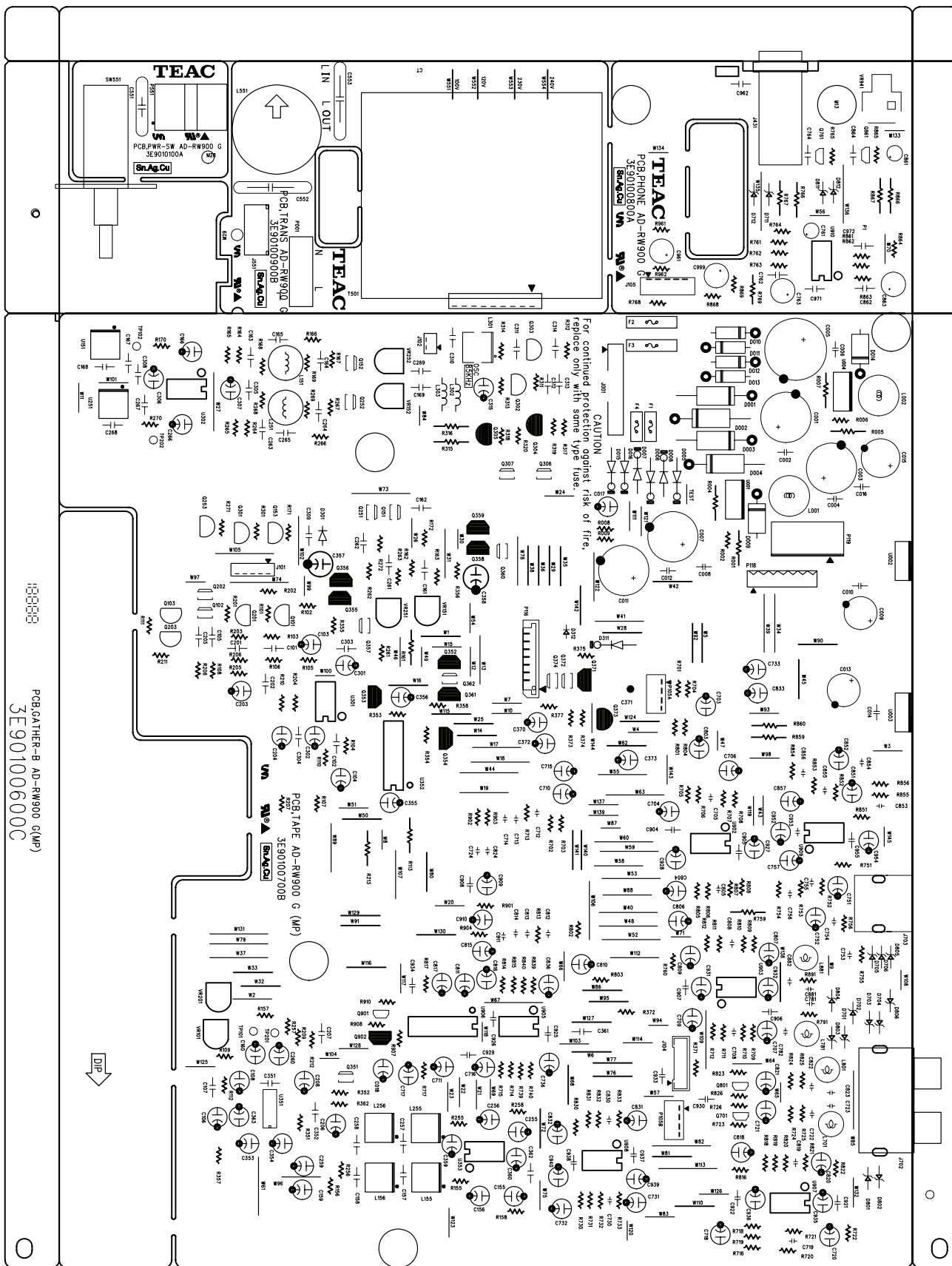
PCB,GATHER-A AD-RW900 G (Side B)



**CAUTION** The portion in the dashed box consists of service parts that need to be ordered using part numbers in Bold.

**注意** 破線部分は、太字品番で発注する補修部品になります。

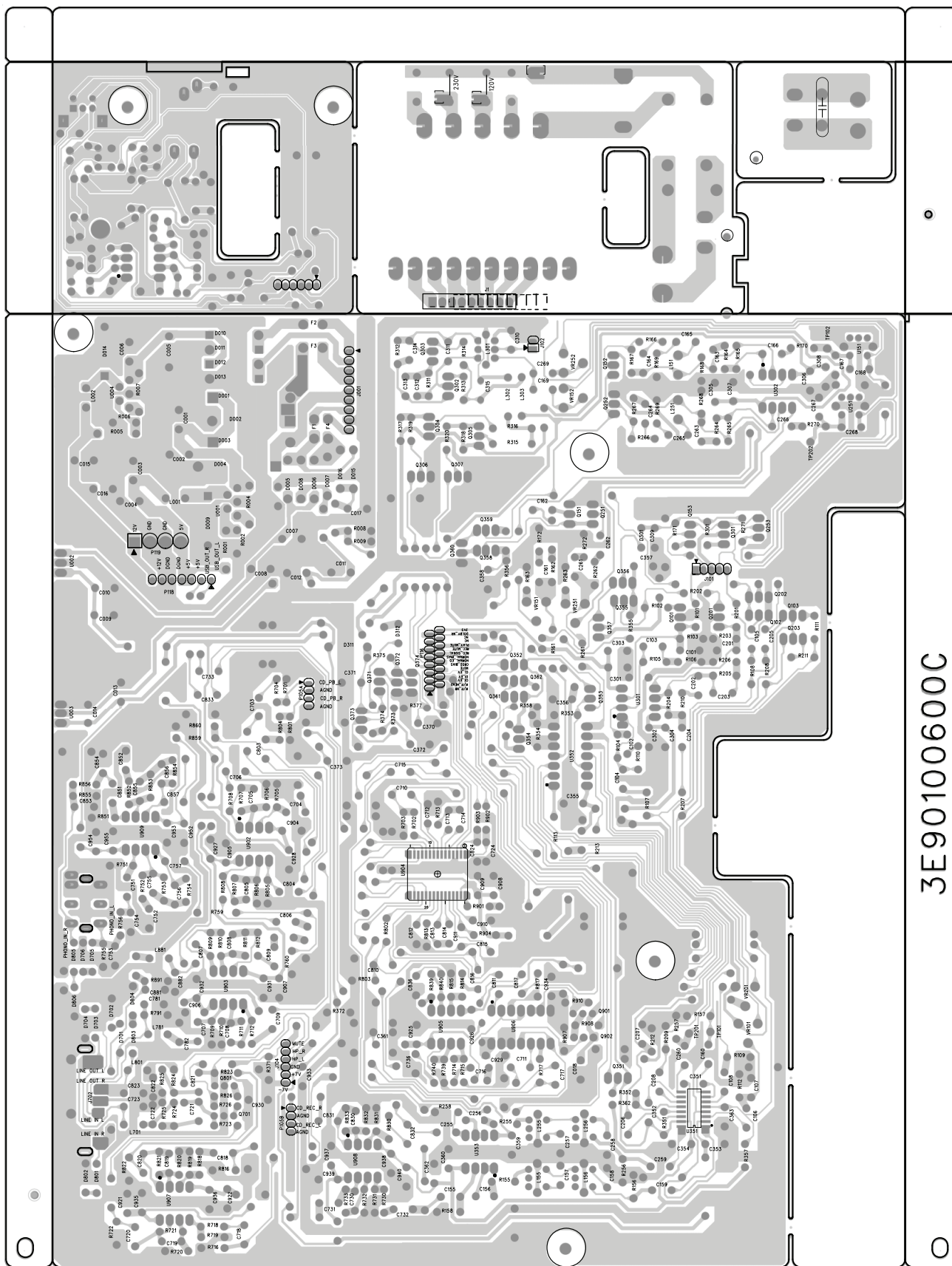
PCB,GATHER-B AD-RW900 G (Side A)



**CAUTION** The portion in the dashed box consists of service parts that need to be ordered using part numbers in Bold.

**注意** 破線部分は、太字品番で発注する補修部品になります。

PCB,GATHER-B AD-RW900 G (Side B)



3E90100600C

**CAUTION** The portion in the dashed box consists of service parts that need to be ordered using part numbers in Bold.

**注意** 破線部分は、太字品番で発注する補修部品になります。

**CAUTION** Part with numbers in parentheses ( ) cannot be ordered. If you want to order service parts, be sure to use "Child" part numbers (numbers in Bold), which refer to individual parts of a parent part.

**注意** "()"付き品番は、発注できません。補修部品を発注する際は、太字品番で発注してください。

**PCB GATHER,CPU AD-RW900 G / PCB,GATHER-A AD-RW900 G**

基板

REF.NO.	PARTS NO.	DESCRIPTION .	REMARKS	REF.NO.	PARTS NO.	DESCRIPTION .	REMARKS
	<b>3E95100152A</b>	<b>PCBA,CPU ERP2 AD-RW900 G</b> <i>PCBA,S-CPU AD-RW900 G</i>		Q403	S0065074	TRANSISTOR,DTC124EUA TP G	
LS1	E0081244	COIL,BLM18PG600SN1D G		Q405	S0065074	TRANSISTOR,DTC124EUA TP G	
LS2	E0081244	COIL,BLM18PG600SN1D G		Q406	S0065074	TRANSISTOR,DTC124EUA TP G	
LS3	E0081244	COIL,BLM18PG600SN1D G		Q407	S0065074	TRANSISTOR,DTC124EUA TP G	
L1	E0081244	COIL,BLM18PG600SN1D G		Q409	S0065074	TRANSISTOR,DTC124EUA TP G	
L2	E0081244	COIL,BLM18PG600SN1D G	⚠	Q411	S0065074	TRANSISTOR,DTC124EUA TP G	
L3	E0081244	COIL,BLM18PG600SN1D G	⚠	Q402	S0075364	TRANSISTER,2SB1188 G	
L4	E0081244	COIL,BLM18PG600SN1D G		Q404	S0075364	TRANSISTER,2SB1188 G	
L5	E0081244	COIL,BLM18PG600SN1D G		U404	3S039034	IC,SN74LVC14ADR G	
L6	E0081244	COIL,BLM18PG600SN1D G		U406	3S038914	IC,RT9702 GB G	
L7	E0081244	COIL,BLM18PG600SN1D G		U403	3S038834	IC,AMS1117-1.8 SOT-223 G	
L8	E0081244	COIL,BLM18PG600SN1D G		U402	3S039024	IC,D1117-3V3 G	
L9	E0081244	COIL,BLM18PG600SN1D G		U401	3S0400900A	IC,GC89L581A0 OR GC89L591A0 G	
L10	E0081244	COIL,BLM18PG600SN1D G			3S039954	IC,GC89L581A0 G	
L11	E0081244	COIL,BLM18PG600SN1D G			3S040084	IC,GC89L591A0 G	
L12	E0081244	COIL,BLM18PG600SN1D G					
L13	E0081244	COIL,BLM18PG600SN1D G		L551	E0081244	COIL,BLM18PG600SN1D G	
L20	E0081244	COIL,BLM18PG600SN1D G		L552	E0081244	COIL,BLM18PG600SN1D G	
L23	E0081244	COIL,BLM18PG600SN1D G		L553	E0081244	COIL,BLM18PG600SN1D G	
L201	E0081244	COIL,BLM18PG600SN1D G		L554	E0081244	COIL,BLM18PG600SN1D G	
L202	R0156404	RD,1/10W 100 OHM J0603G					
L203	E0081244	COIL,BLM18PG600SN1D G		U501	S0059584	IC,AK4117VF G	
L19	C0074994	CC,X7R 16V 1.0UF K T0603G		U502	S0084354	IC,PCM2900BDBR G	
U10	3S039984	IC,WM8731SEDSRV G		L555	E0081244	COIL,BLM18PG600SN1D G	
U1	3S039944	IC,TCC8601 QFP144-3 G		L556	E0166304	FILTER,NT2012 985BH1007 G	
U17	3S039974	IC,SN74HC32PWR G		EM001	C0071804	CC,18V 3PF M EZJ G	
U3	S0095154	IC,D7029-2V9 G		EM002	C0071804	CC,18V 3PF M EZJ G	
U6	S0082443	IC,JMH330APC1-TGCC		JMP3	R0157394	RD,1/10W 0 OHM J0603G	
U4	S0089163	@IC,M12L128168A-7T-G2T G		JMP4	R0157394	RD,1/10W 0 OHM J0603G	
EM006	S0086044	ZENER DIO,CDZCT2R6.8B G		JMP5	R0157394	RD,1/10W 0 OHM J0603G	
EM005	S0086044	ZENER DIO,CDZCT2R6.8B G		Q504	S0065074	TRANSISTOR,DTC124EUA TP G	
EM003	C0071804	CC,18V 3PF M EZJ G		J903	E0101924	CONNECTOR,B 3B-PH-SM4(LF)	
EM004	C0071804	CC,18V 3PF M EZJ G				<i>PCBA,A-GATHER A AD-RW900 G</i>	
				D571	3S002041	@ZDI,MTZJ3.3B T-77	
		<i>PCBA,T-CPU ERP2 AD-RW900 G</i>				<i>PCBA,T-GATHER A AD-RW900 G</i>	
Y1	3E083620	XTAL,12MHZ 18PF HC49S G		S501	E0127100	SW,TACT SKHHAM2520 G	
Y3	3E083610	XTAL,25MHZ 18PF JU308 G		S502	E0127100	SW,TACT SKHHAM2520 G	
Y2	E0124762	XTAL,32.768K NC38(6.3PF)G		S503	E0127100	SW,TACT SKHHAM2520 G	
JS1	E0119750	CONNECTOR,B 4B-PH-K-S G		S504	E0127100	SW,TACT SKHHAM2520 G	
J6	E0170100	CONN,WATK-07A1L1BU3		S505	E0127100	SW,TACT SKHHAM2520 G	
J21	3E083580	PIN HEADER,27PIN-2210S24 G		S506	E0127100	SW,TACT SKHHAM2520 G	
J22	3E083570	PIN HEADER,24PIN-2210S24 G		S507	E0127100	SW,TACT SKHHAM2520 G	
J5	E0119740	CONNECTOR,B 3B-PH-K-S G		S508	E0127100	SW,TACT SKHHAM2520 G	
	A0008800	CREAM SOLDER,S70G-SX		S512	E0127100	SW,TACT SKHHAM2520 G	
				S513	E0127100	SW,TACT SKHHAM2520 G	
				S514	E0127100	SW,TACT SKHHAM2520 G	
				S515	E0127100	SW,TACT SKHHAM2520 G	
				S516	E0127100	SW,TACT SKHHAM2520 G	
				S517	E0127100	SW,TACT SKHHAM2520 G	
L401	E0081244	COIL,BLM18PG600SN1D G		S518	E0127100	SW,TACT SKHHAM2520 G	
L402	E0081244	COIL,BLM18PG600SN1D G		S519	E0127100	SW,TACT SKHHAM2520 G	
L405	E0081244	COIL,BLM18PG600SN1D G		S523	E0127100	SW,TACT SKHHAM2520 G	
L406	E0081244	COIL,BLM18PG600SN1D G		S524	E0127100	SW,TACT SKHHAM2520 G	
L403	E0081244	COIL,BLM18PG600SN1D G		S525	E0127100	SW,TACT SKHHAM2520 G	
Q408	S0041574	TRANSISTER,DTA124EUA G		S526	E0127100	SW,TACT SKHHAM2520 G	
Q410	S0041574	TRANSISTER,DTA124EUA G		S527	E0127100	SW,TACT SKHHAM2520 G	
Q401	S0065074	TRANSISTOR,DTC124EUA TP G		S528	E0127100	SW,TACT SKHHAM2520 G	

**CAUTION** Part with numbers in parentheses ( ) cannot be ordered. If you want to order service parts, be sure to use "Child" part numbers (numbers in Bold), which refer to individual parts of a parent part.

**注意** "()"付き品番は、発注できません。補修部品を発注する際は、太字品番で発注してください。

**PCB,GATHER-A AD-RW900 G / PCB,GATHER-B AD-RW900 G**

集合 -A / 集合 -B 基板

REF.NO.	PARTS NO.	DESCRIPTION .	REMARKS	REF.NO.	PARTS NO.	DESCRIPTION .	REMARKS
S529	E0127100	SW,TACT SKHHAM2520 G		D711	E0123271	JUMPER WIRE,7.5MM G	
S530	E0127100	SW,TACT SKHHAM2520 G		D811	E0123271	JUMPER WIRE,7.5MM G	
S509	3E082260	SW,SSSF023NC1-TK1 G		D712	C0072401	CC,B50V 1000PF K UP025 G	
S520	3E082260	SW,SSSF023NC1-TK1 G		D812	C0072401	CC,B50V 1000PF K UP025 G	
S531	3E082260	SW,SSSF023NC1-TK1 G					
S532	E0174710	SW,SSSF022NC2-TK1 G				<i>PCBA,T-GATHER-B ERP2 AD-RW900 G</i>	
VR501	3R003980	VAR REG, 5KB RK11K113 CCG		D010	S0070750	DIODE,LT2A05 G	⚠
S533	3E037310	ENCODER,EC12E2440A6 G		D011	S0070750	DIODE,LT2A05 G	⚠
P1	E0188350	CONN,USB04124051W00RS G		D012	S0070750	DIODE,LT2A05 G	⚠
				D013	S0070750	DIODE,LT2A05 G	⚠
D501	S0065830	LED,SLR-342VR G		D001	3S003540	DI,IN5404-M22 G	⚠
D502	S0065830	LED,SLR-342VR G		D002	3S003540	DI,IN5404-M22 G	⚠
D503	S0065830	LED,SLR-342VR G		D003	3S003540	DI,IN5404-M22 G	⚠
D501A	3M0125900A	HOLDER,LED H=13 G		D004	3S003540	DI,IN5404-M22 G	⚠
D502A	3M0125900A	HOLDER,LED H=13 G		D005	S0071811	DI,1N4003-F TAPINGW=52 G	⚠
D503A	3M0874900A	HOLDER,LED H=9 G		D006	S0071811	DI,1N4003-F TAPINGW=52 G	⚠
J902	3E0839400A	WIRE ASSY,4P USB AD-RW900 G		D007	S0071811	DI,1N4003-F TAPINGW=52 G	⚠
P114	3E083894	CONNECTER,1.0B-21PLB G		D008	S0071811	DI,1N4003-F TAPINGW=52 G	⚠
Y401	3E083640	XTAL,20MHZ 15PF HC49S G		D311	S0071811	DI,1N4003-F TAPINGW=52 G	⚠
VR601	R0209430	VAR RES,VM6CK-PV15B2.2KG		D009	3S036301	DI,SCHOTTKY 60V2A D2S6M	
				D014	3S036301	DI,SCHOTTKY 60V2A D2S6M	
J118	E0102480	CONNECTOR,B 7B-EH(LF)(SN)		F2	E0148702	CKT PTCT,1.35A RXEF135 TPG	⚠
J112	E0119740	CONNECTOR,B 3B-PH-K-S G		F3	E0148702	CKT PTCT,1.35A RXEF135 TPG	⚠
J105	E0119790	CONNECTOR,B 8B-PH-K-S G		F1	E0148702	CKT PTCT,1.35A RXEF135 TPG	⚠
J117	E0119800	CONNECTOR,B 9B-PH-K-S G		F4	E0148702	CKT PTCT,1.35A RXEF135 TPG	⚠
J113	E0023360	CONNECTOR,11FE-BT-VK-N G		U904	3S038924	IC,LC75348M G	
J116	E0150690	CONNECTOR,16FMN-BTRK G		U351	S0061754	@IC,HA12134AFEL-E G	
J101	3E083590	PIN SOCKET,24PIN-2209S24 G		U352	S0078210	IC,BU4066BC G	
J102	3E083600	PIN SOCKET,27PIN-2209S27 G		U906	S0078210	IC,BU4066BC G	
J119	3E083880	CONNECTOR,19FMN-BTRK G		U302	S0064550	IC,NJM4558D G	
J114	3E083870	CONNECTER,1.0A-21PL G		U353	S0064550	IC,NJM4558D G	
P119	3E083880	CONNECTOR,19FMN-BTRK G		U902	S0064550	IC,NJM4558D G	
Y551	3E083620	XTAL,12MHZ 18PF HC49S G		U903	S0064550	IC,NJM4558D G	
J705	M01510100A	BRACKET,PCB-A G		U905	S0064550	IC,NJM4558D G	
J704	E0134440	OPT CONN,GP1FAV51RK0F G		U907	S0064550	IC,NJM4558D G	
J706	E0115760	CONN,USB UBB4RD14C4D G		U908	S0064550	IC,NJM4558D G	
G501	3M0876700B	SPRING USB AD-RW900 G		U301	3S000280G	@IC,UPC4570C-A G	
J108	E0102470	CONNECTOR,B 6B-EH(LF)(SN)		U909	3S000280G	@IC,UPC4570C-A G	
		<i>PCBA,R-GATHER A AD-RW900 G</i>		U002	S0075052	@IC,TA7807SB(TP,Q) G	⚠
Q501	S0094422	TRANSISTOR,DTC124ESA G		U003	S0075072	@IC,TA79007SB(TP,Q) G	⚠
Q502	S0094422	TRANSISTOR,DTC124ESA G		U004	S0082972	IC,BD9702CP-V5 G	⚠
Q503	S0094422	TRANSISTOR,DTC124ESA G		U001	S0082972	IC,BD9702CP-V5 G	⚠
	<b>3E95100651A</b>	<b>PCBA,GATHER-B ERP2 AD-RW900 G</b>		L302	3E003711G	COIL, 10UH EC24-100K-T2 G	
		<i>PCBA,A-GATHER B AD-RW900 G</i>		L303	3E003711G	COIL, 10UH EC24-100K-T2 G	
D301	S0067021	@DIODE,1SS133 T-77 G		L151	3E004421G	COIL, 8.2MH EC46-822J-T5G	
D312	S0067021	@DIODE,1SS133 T-77 G		L251	3E004421G	COIL, 8.2MH EC46-822J-T5G	
L781	R0155291	RD,1/8W 10K OHMJ26MMG		L001	E0130740	COIL,10UH 3.6A DR2W8*7 G	
L881	R0155291	RD,1/8W 10K OHMJ26MMG		L002	E0130740	COIL,10UH 3.6A DR2W8*7 G	
L701	E0123241	JUMPER WIRE,5MM G		U151	E01523300A	@VAR COIL,MPX 079418007 G	
L801	E0123241	JUMPER WIRE,5MM G		U251	E01523300A	@VAR COIL,MPX 079418007 G	
				L155	E01523300A	@VAR COIL,MPX 079418007 G	
				L255	E01523300A	@VAR COIL,MPX 079418007 G	
				L156	E01523400A	@VAR COIL,MPX 079418008 G	
				L256	E01523400A	@VAR COIL,MPX 079418008 G	





# 10. Included Accessories

付属品

## Included Items

REF.NO.	PARTS NO.	DESCRIPTION .	REMARKS
	3D0804101B	OWN MNL AD-RW900 JPN G	
	3D0804150C	OWN MNL AD-RW900 GI G	
	3D0804193C	OWN MNL AD-RW900 EFS G	
	D00729700E	WARR CARD,(JPN) G	
	D00822001C	WARR CARD,ENG/FRE C A G	
	3E0835900A	REMOTE CONTROL UNIT,RC-1283 G	
	E0155030	BATTERY,UM4(ENGLISH)G	
	3E000380	PIN CORD, G	

### NOTES

- PC boards shown are viewed from parts side.
- Parts marked with \* require longer delivery time.
- The parts with no reference number or no parts number in the exploded views are not supplied.
- As regards the resistors and capacitors, refer to the circuit diagrams contained in this manual.
- $\triangle$  Parts marked with this sign are safety critical components. They must be replaced with identical components - refer to the appropriate parts list and ensure exact replacement.
- Parts of [ ] mark can be used only with the version designated.

[ JPN ] : JAPAN [ T/C ] : U.S.A./CANADA [ KOR ] : KOREA

[ EUR ] : EUROPE [ UK ] : U.K.

[ AUS ] : AUSTRALIA [ TM ] : TAIWAN

[ CHI ] : CHINA

### 注意

- プリント基板図は部品面を示しています。
- \*印の部品は納期が若干かかります。あらかじめご了承ください。
- 分解図に部番のない部品および品番のない部品は供給できません。
- 標準の抵抗、コンデンサーは省略してあります。回路図を参照してください。
- $\triangle$  印は安全重要部品です。交換する時は必ず指定の部品を使用してください。
- 仕向先

[ JPN ] : JAPAN [ T/C ] : U.S.A./CANADA [ KOR ] : KOREA

[ EUR ] : EUROPE [ UK ] : U.K.

[ AUS ] : AUSTRALIA [ TM ] : TAIWAN

[ CHI ] : CHINA