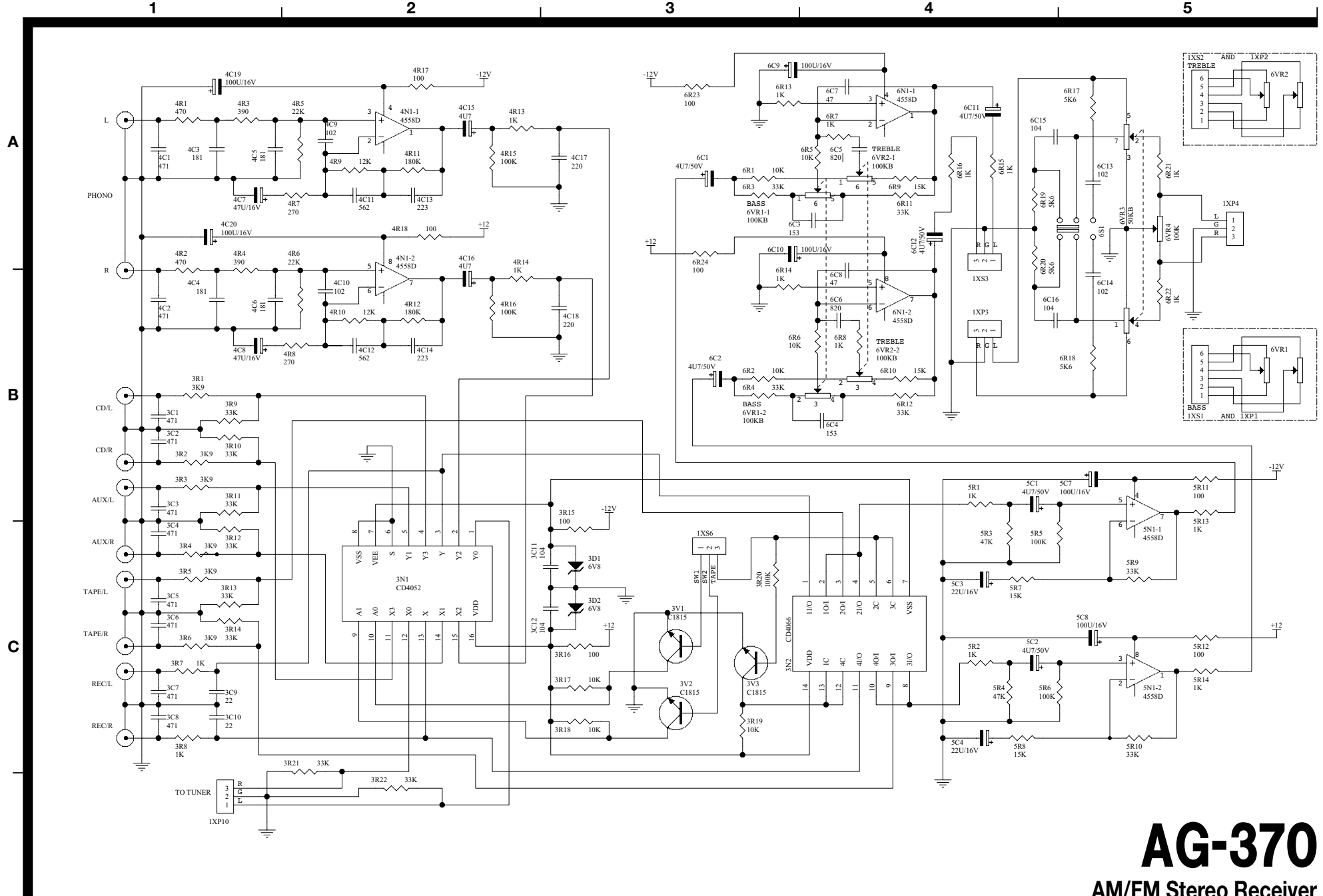


TEAC SCHEMATIC DIAGRAM AG-370 MAIN PCB (1/2)



AG-370

AM/FM Stereo Receiver

1st Issue; January 2003

1

2

3

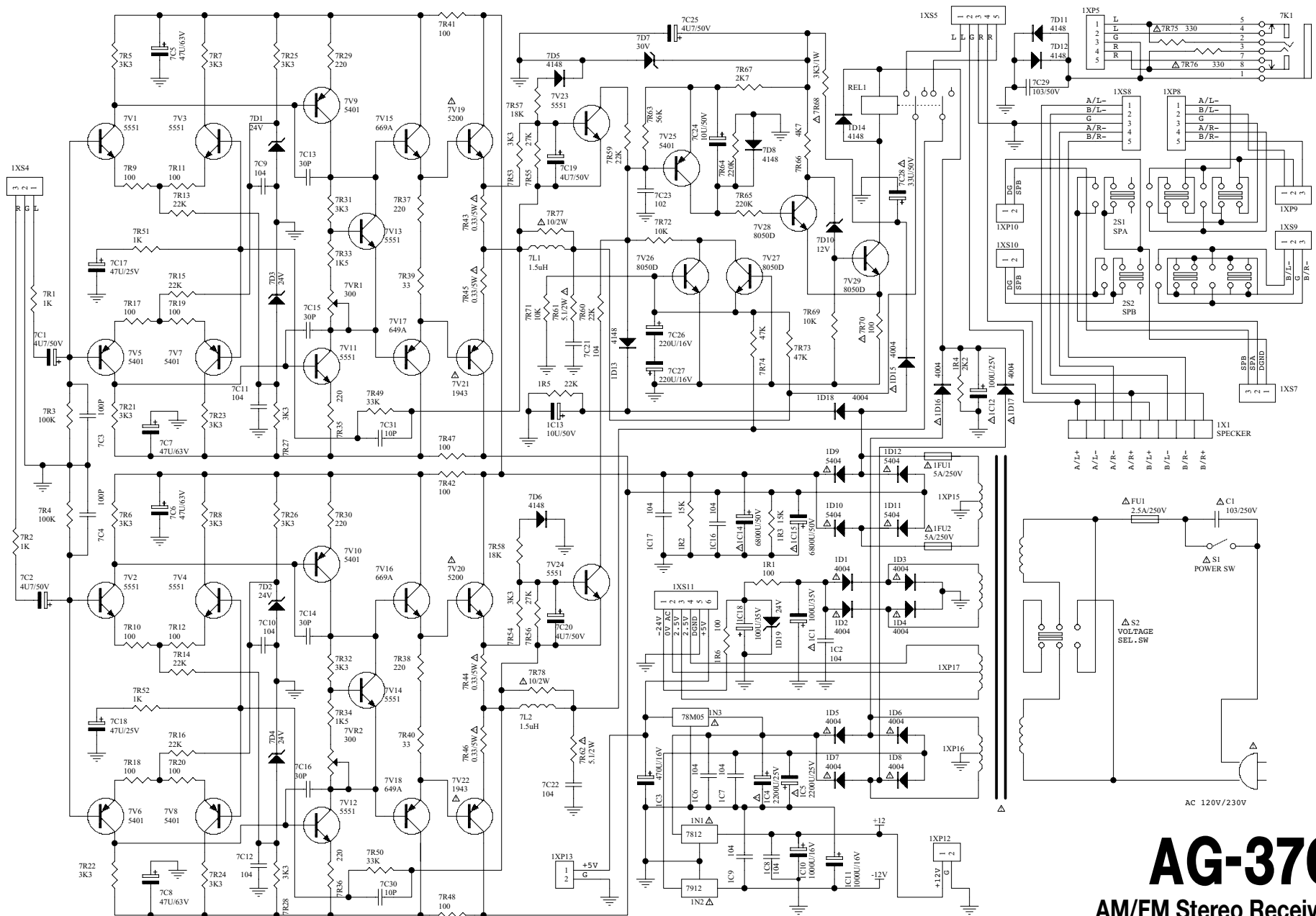
4

5

A

B

C



AG-370

AM/FM Stereo Receiver

1st Issue; January 2003

TEAC SCHEMATIC DIAGRAM AG-370 TUNER PCB

1

2

3

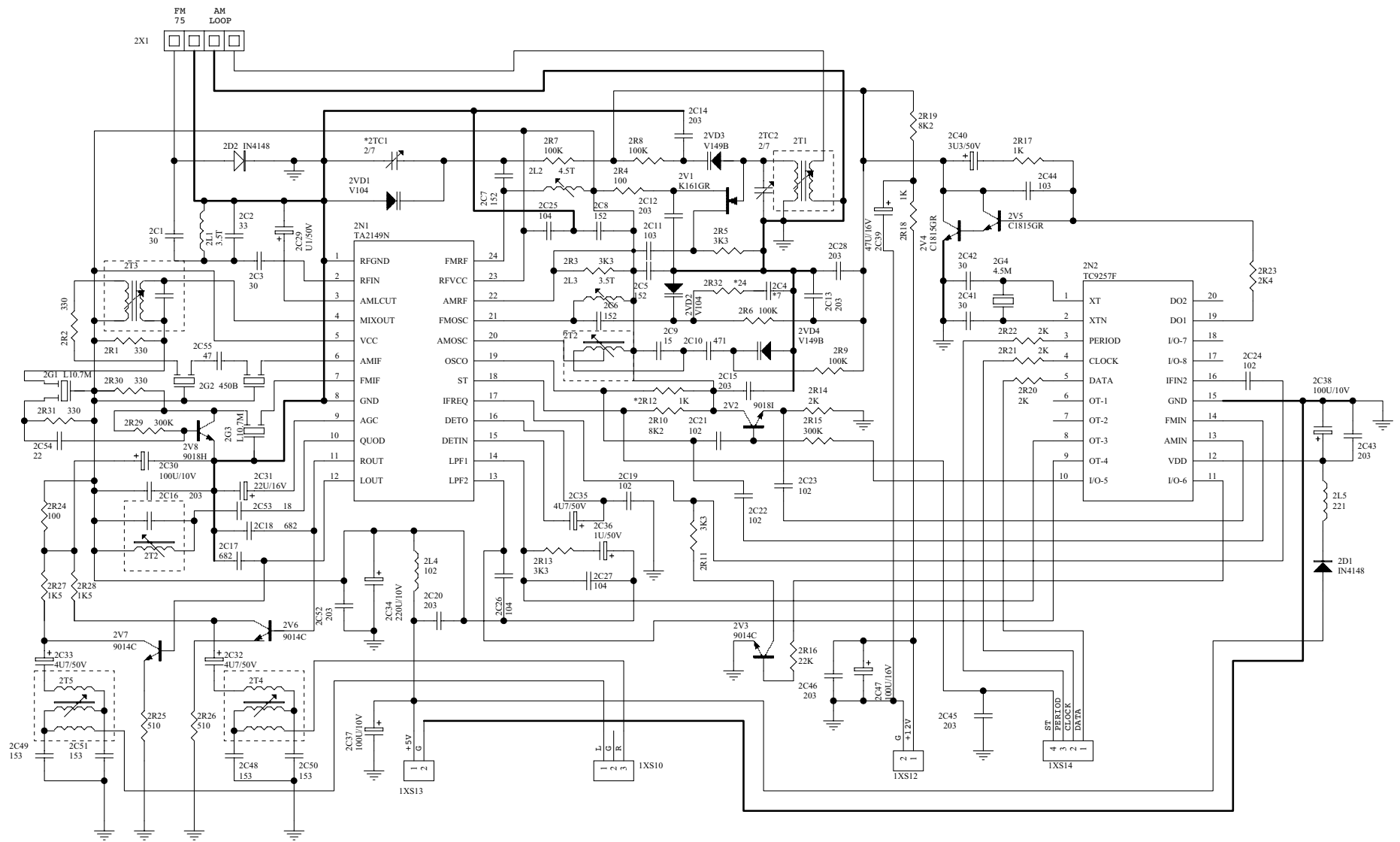
4

5

A

B

C

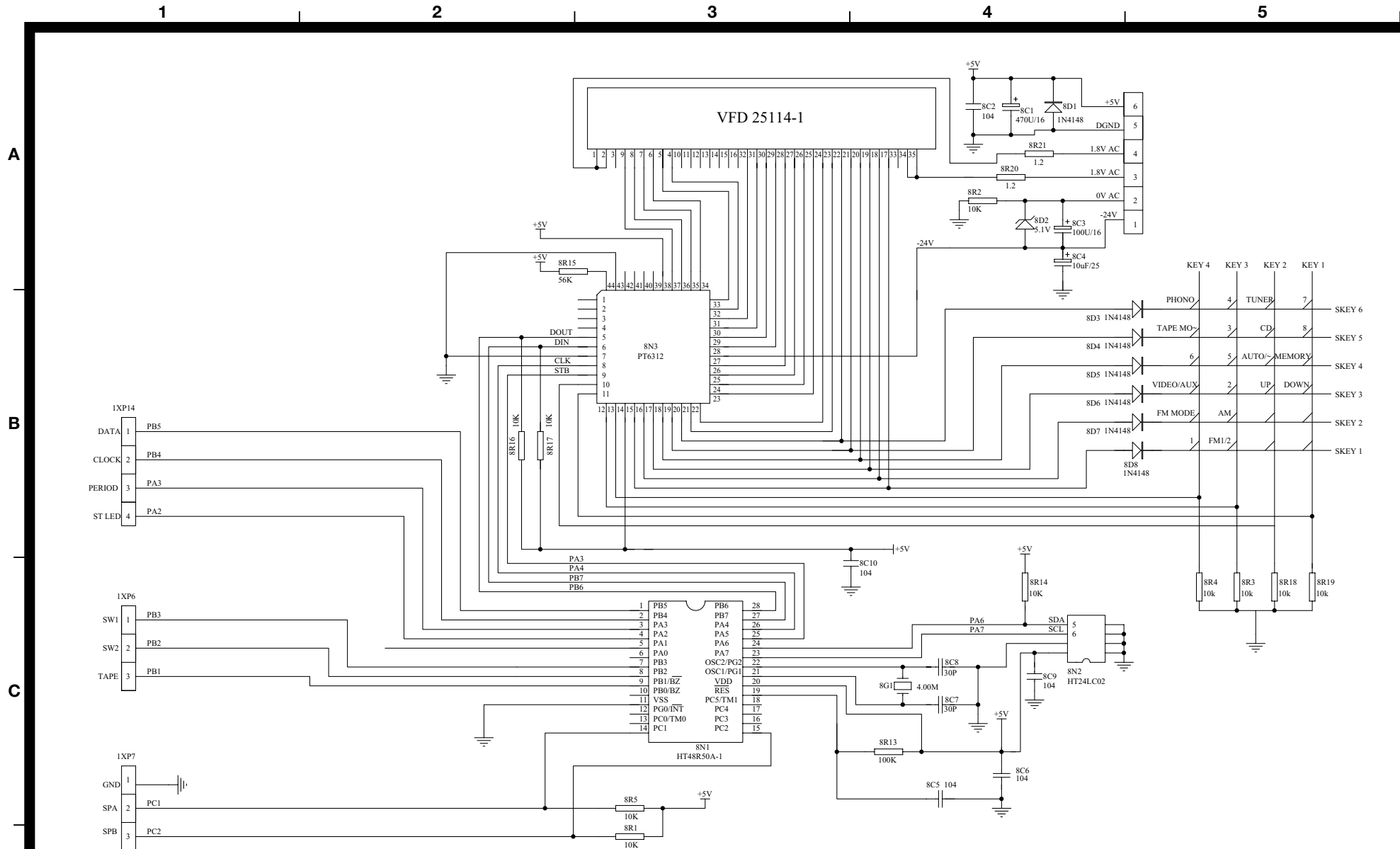


AG-370

AM/FM Stereo Receiver

1st Issue; January 2003

TEAC SCHEMATIC DIAGRAM AG-370 FRONT PCB



INSTRUCTIONS FOR SERVICE PERSONNEL
BEFORE RETURNING APPLIANCE TO THE CUSTOMER, MAKE LEAKAGE-CURRENT OR RESISTANCE MEASUREMENTS TO DETERMINE THAT EXPOSED PARTS ARE ACCEPTABLY INSULATED FROM THE SUPPLY CIRCUIT.

NOTES:
 ⚠ Parts marked with this sign are safety critical components. They must always be replaced with identical components-refer to the appropriate parts list and ensure exact replacement.

AG-370

AM/FM Stereo Receiver
 1st Issue; January 2003