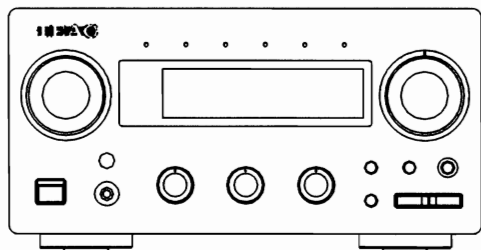


TEAC



SERVICE MANUAL

AG-H300mkIII

Integrated Stereo Receiver

NOTES

- PC boards shown are viewed from parts side.
- The parts with no reference number or parts number in the exploded views are not supplied.
- As regards the resistors and capacitors, refer to the circuit diagrams contained in this manual.
- **⚠** Parts marked with this sign are critical components. They must be replaced with identical components - refer to the appropriate parts list and ensure exact replacement.
- Parts of [] mark can be used only with the version designated.
[J]: JAPAN [US]: U.S.A. [C]: CANADA
[E]: EUROPE [UK]: U.K. [GE]: GENERAL EXPORT

CONTENTS

SPECIFICATION

PIN FUNCTION

EXPLODED VIEW.....

PRINTED CIRCUIT BOARDS

WIRING DIAGRAM.....

SCHEMATIC DIAGRAM

ELECTRICAL PARTS LIST

Specifications

AMP Section

Power output	: 35 W+35W (8Ω, 1kHz, 0.5%)
Total harmonic distortion	: 35 W+35W (40W, 1kHz, 8Ω)
S/N Ratio(inout Short)	:
Phono	: 60dB(IHF-A)
CD, Tuner, Aux, Tape	: 90dB(IHF-A)
Input Sensitivity/Impedance	:
Phono(MM)	: 2.5mV/47kΩ
CD, Tuner, Aux, Tape	: 200mV/47kΩ
Channel Separation	: 60dB
(Input Short)	: (1kHz, 1W, B.P.F)
Residual noise	: 60mV
Frequency response	: 20Hz to 65kHz
Tone control	:
Bass	: ±10dB(100Hz)
Treble	: ±10dB(100Hz)
Required speaker impedance	: 8Ω to 16Ω
General	
Power Requirements	: 230V AC, 50Hz[EUR] 120V AC, 60Hz[T/C]
Power Consumption	: 85W
Dimensions(W x H x D)	: 215 x 110 x 307
Weight(net)	: 4Kg

FM Section

Tuning Rane	: 87.50MHz~ 108.00MHz (50kHz steps)[EUR] 76.0MHz~ 90.0MHz (100kHz steps)[DM] 87.50MHz~ 108.00MHz (100kHz stepe)[T/C]
Usable Sensitivity(IHF)	: Mono:15dBf
50dB Quieting Sensitivity	:
Mono	: 30dBf
Stereo	: 40dBf
Image Reiection Ratio	: 40dBf
Frequency Response	: 30Hz~ 15kHz +0.5dB/-3dB
Distortion(1kHz)	:
Mono	: 0.4%
Stereo	: 0.5%
Signal-to-Noise Ratio(at 65dBf, 1kHz)	:
Mono	: 65dB
Stereo	: 60dB
AM suppression Ratio	: 40dB
Stereo Separation(1kHz)	: 30dB

AM Section

Tuning Rane	: 522kHz~ 1620kHz (9kHz steps)[EUR/DM] 530MHz~ 1720MHz (10kHz steps)[T/C] 87.50MHz~ 108.00MHz
Usable Sensitivity	: 55dB/m
Distortion(1kHz)	: 1.5%
Signal-to-Noise Ratio	: 35dB

Standard accessories

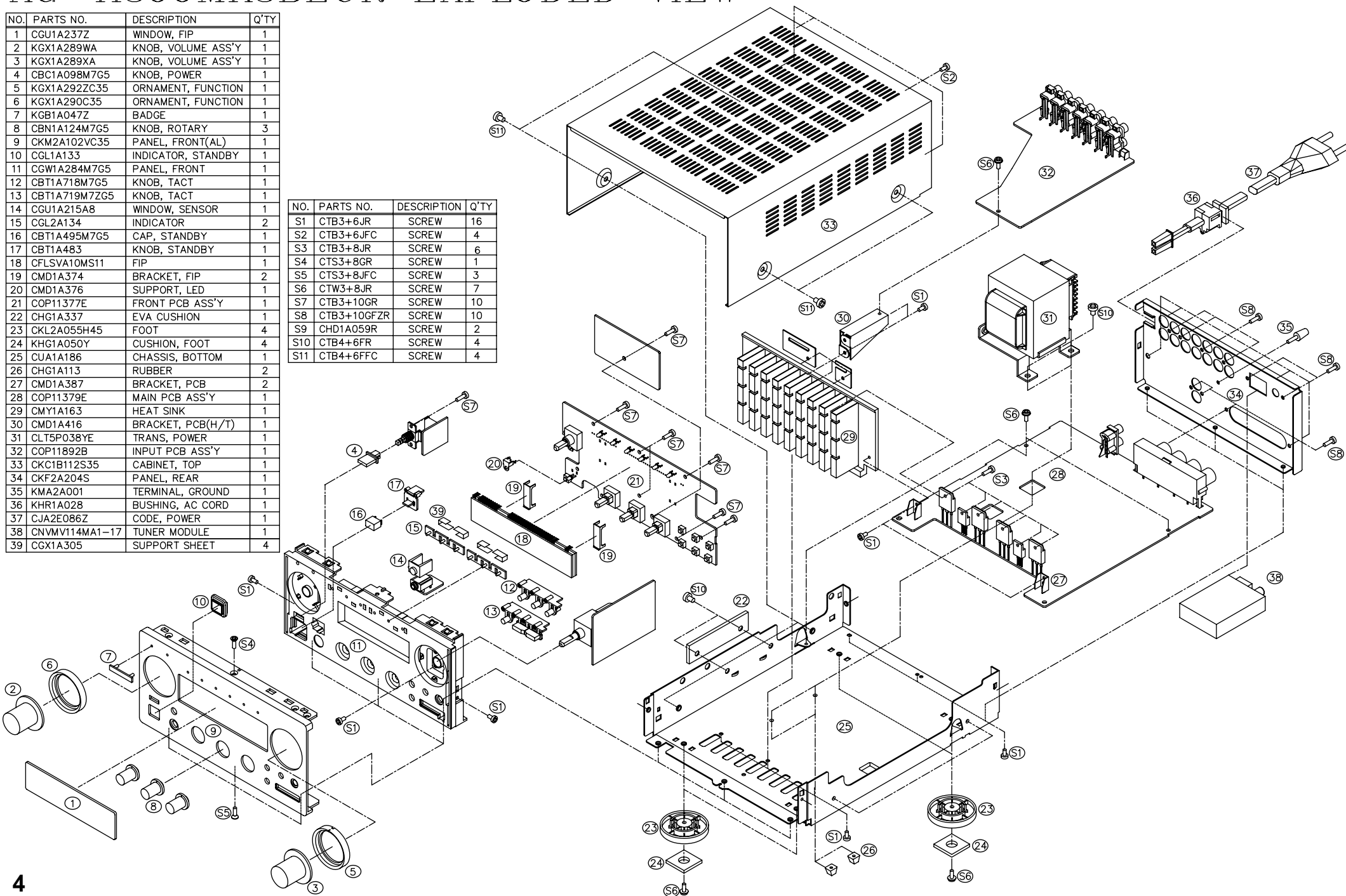
Remote control unit	: 1
Operator's manual	: 1
AM Loop Antenna	: 1
FM Antenna	: 1
FM Matching Transformer	: 1 (T/C)

IC FUNCTION (Micom BVITMP87PM78F)			
PIN No.	SYMBOL	I/O	DESCRIPTION
1	Vdd	I	+5V
2	NC	-	NO Connection
3	Func, Mute	O	Function Mute ON/OFF Output
4	NC	-	No Connection
5	NC	-	
6	NC	-	
7-9	Func, Indicator	O	Function LED Drive Data Output
10	NC	-	No connection
11	RDS-DATA	I	RDS DATA Output
12	FM-L	I	FM/AM Switching Output
13	RDS-CLK	I	RDS CLOCK input
14	Stereo-IN	I	Stereo Display input
15	Tuned-IN	I	Tuned Display input
16	Protect-IN	I	Protection input
17-21	Key Input	I	Resistor Divide Key Control Input
22	Vss	-	GND
23	Vass	-	GND
24	Varef	-	Vdd(+5V)
25	Vdd	-	+5V
26	Back-up	I	Backup Mode control
27	Vss	-	GND
28-29	Func, Up/Down	I	Function UP/DOWN INput
30	Vss	-	GND
31	XIN	I	Crstal element Connection Terminal
32	XOUT	O	Crstal element Connection Terminal
33	RESET	I	RESET Input
34	Remote-In	I	Remote Control Data Input
35	BUS OUT	O	System Control Signal Output
36	BUS IN	I	System Control Signal Input
37	SPK ON/OFF	O	Speker ON/OFF Output
38	NC	-	NO Connection
39	-20dB Mute	O	-20dB Mute Output
40	NC	-	No Connection
41	PLL CE	O	PLL Serial Chip Enable Output
42	PLL DATA	O	PLL Serial Data Output
43	PLL CLK	O	PLL Serial CLOCK Output
44	Option	O	Amp/Receiver Option
45	NC	-	No Connection
46	STB	O	Function IC Signal Output
47	CLK	O	Function IC Signal Output
48	DATA	O	Function IC Signal Output
49	NC	-	No Connection
50	Vkk	-	VFLP (-33V)
51-61	FIP GRID	O	FIP GRID Output
62-82	FIP ANODE	O	FIP ANODE Output
83-85	Option	O	Region Option
86	Option	O	Display Option
87	Option	O	RDS ON/OFF Option
88	Option	O	Model Option
89	Standby	O	Standby/ Direct Option Output
90	VOL OP	O	VOL UP
91	VOL DOWN	O	VOL DOWN
92	VOL LED	O	VOL LED Display
93	Power ON/Off	O	Power ON/OFF Output
94	Standby LED	O	Standby LED ON/OFF Output
95-100	NC		No Connection

AG-H300MK3BEUR EXPLODED VIEW

NO.	PARTS NO.	DESCRIPTION	Q'TY
1	CGU1A237Z	WINDOW, FIP	1
2	KGX1A289WA	KNOB, VOLUME ASS'Y	1
3	KGX1A289XA	KNOB, VOLUME ASS'Y	1
4	CBC1A098M7G5	KNOB, POWER	1
5	KGX1A292ZC35	ORNAMENT, FUNCTION	1
6	KGX1A290C35	ORNAMENT, FUNCTION	1
7	KGB1A047Z	BADGE	1
8	CBN1A124M7G5	KNOB, ROTARY	3
9	CKM2A102VC35	PANEL, FRONT(AL)	1
10	CGL1A133	INDICATOR, STANDBY	1
11	CGW1A284M7G5	PANEL, FRONT	1
12	CBT1A718M7G5	KNOB, TACT	1
13	CBT1A719M7ZG5	KNOB, TACT	1
14	CGU1A215A8	WINDOW, SENSOR	1
15	CGL2A134	INDICATOR	2
16	CBT1A495M7G5	CAP, STANDBY	1
17	CBT1A483	KNOB, STANDBY	1
18	CFLSVA10MS11	FIP	1
19	CMD1A374	BRACKET, FIP	2
20	CMD1A376	SUPPORT, LED	1
21	COP11377E	FRONT PCB ASS'Y	1
22	CHG1A337	EVA CUSHION	1
23	CKL2A055H45	FOOT	4
24	KHG1A050Y	CUSHION, FOOT	4
25	CUA1A186	CHASSIS, BOTTOM	1
26	CHG1A113	RUBBER	2
27	CMD1A387	BRACKET, PCB	2
28	COP11379E	MAIN PCB ASS'Y	1
29	CMY1A163	HEAT SINK	1
30	CMD1A416	BRACKET, PCB(H/T)	1
31	CLT5P038YE	TRANS, POWER	1
32	COP11892B	INPUT PCB ASS'Y	1
33	CKC1B112S35	CABINET, TOP	1
34	CKF2A204S	PANEL, REAR	1
35	KMA2A001	TERMINAL, GROUND	1
36	KHR1A028	BUSHING, AC CORD	1
37	CJA2E086Z	CODE, POWER	1
38	CNVMV114MA1-17	TUNER MODULE	1
39	CGX1A305	SUPPORT SHEET	4

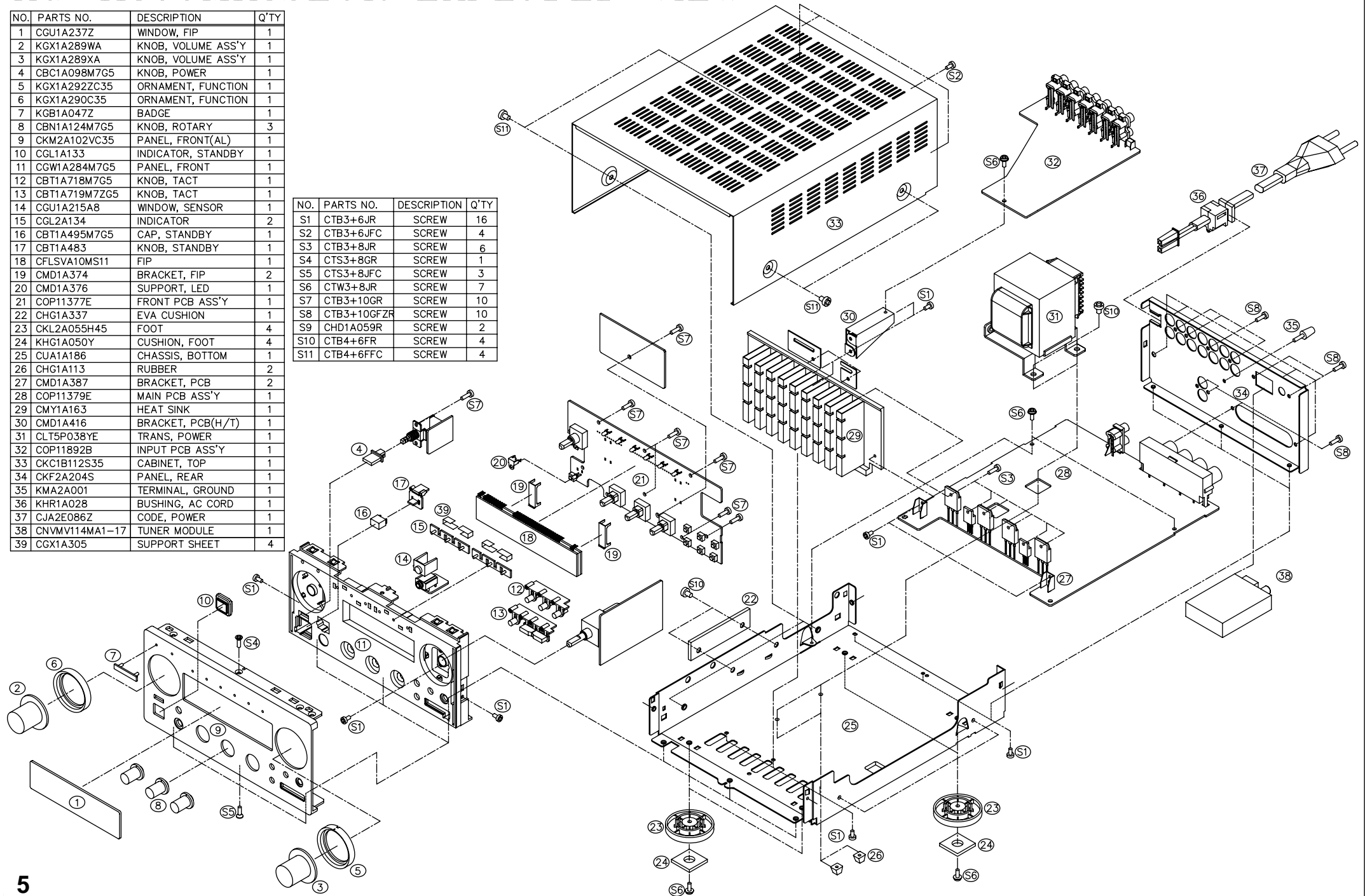
NO.	PARTS NO.	DESCRIPTION	Q'TY
S1	CTB3+6JR	SCREW	16
S2	CTB3+6JFC	SCREW	4
S3	CTB3+8JR	SCREW	6
S4	CTS3+8GR	SCREW	1
S5	CTS3+8JFC	SCREW	3
S6	CTW3+8JR	SCREW	7
S7	CTB3+10GR	SCREW	10
S8	CTB3+10GFZR	SCREW	10
S9	CHD1A059R	SCREW	2
S10	CTB4+6FR	SCREW	4
S11	CTB4+6FFC	SCREW	4



AG-H300MK3SEUR EXPLODED VIEW

NO.	PARTS NO.	DESCRIPTION	Q'TY
1	CGU1A237Z	WINDOW, FIP	1
2	KGX1A289WA	KNOB, VOLUME ASS'Y	1
3	KGX1A289XA	KNOB, VOLUME ASS'Y	1
4	CBC1A098M7G5	KNOB, POWER	1
5	KGX1A292ZC35	ORNAMENT, FUNCTION	1
6	KGX1A290C35	ORNAMENT, FUNCTION	1
7	KGB1A047Z	BADGE	1
8	CBN1A124M7G5	KNOB, ROTARY	3
9	CKM2A102VC35	PANEL, FRONT(AL)	1
10	CGL1A133	INDICATOR, STANDBY	1
11	CGW1A284M7G5	PANEL, FRONT	1
12	CBT1A718M7G5	KNOB, TACT	1
13	CBT1A719M7ZG5	KNOB, TACT	1
14	CGU1A215A8	WINDOW, SENSOR	1
15	CGL2A134	INDICATOR	2
16	CBT1A495M7G5	CAP, STANDBY	1
17	CBT1A483	KNOB, STANDBY	1
18	CFLSVA10MS11	FIP	1
19	CMD1A374	BRACKET, FIP	2
20	CMD1A376	SUPPORT, LED	1
21	COP11377E	FRONT PCB ASS'Y	1
22	CHG1A337	EVA CUSHION	1
23	CKL2A055H45	FOOT	4
24	KHG1A050Y	CUSHION, FOOT	4
25	CUA1A186	CHASSIS, BOTTOM	1
26	CHG1A113	RUBBER	2
27	CMD1A387	BRACKET, PCB	2
28	COP11379E	MAIN PCB ASS'Y	1
29	CMY1A163	HEAT SINK	1
30	CMD1A416	BRACKET, PCB(H/T)	1
31	CLT5P038YE	TRANS, POWER	1
32	COP11892B	INPUT PCB ASS'Y	1
33	CKC1B112S35	CABINET, TOP	1
34	CKF2A204S	PANEL, REAR	1
35	KMA2A001	TERMINAL, GROUND	1
36	KHR1A028	BUSHING, AC CORD	1
37	CJA2E086Z	CODE, POWER	1
38	CNVMV114MA1-17	TUNER MODULE	1
39	CGX1A305	SUPPORT SHEET	4

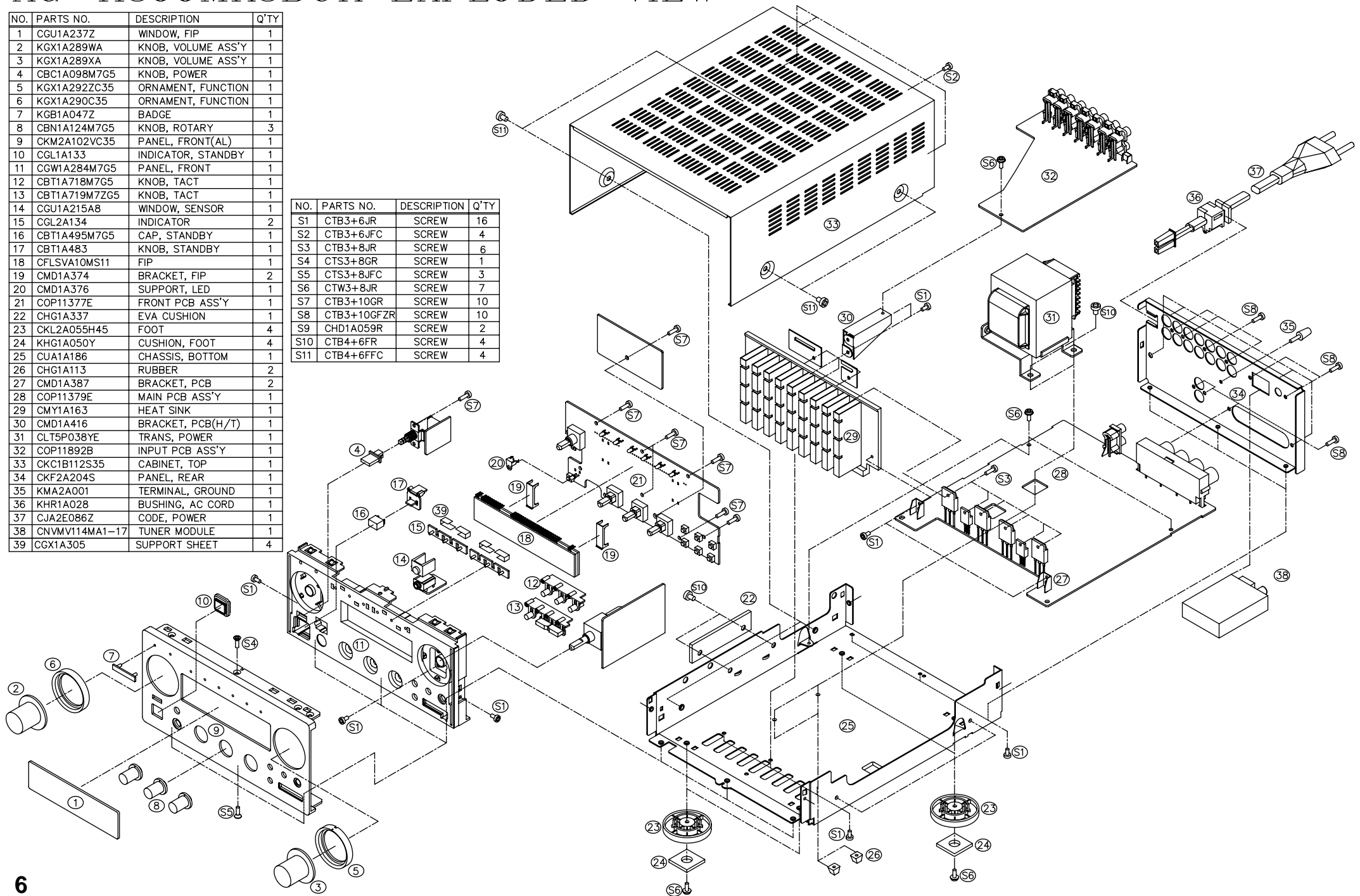
NO.	PARTS NO.	DESCRIPTION	Q'TY
S1	CTB3+6JR	SCREW	16
S2	CTB3+6JFC	SCREW	4
S3	CTB3+8JR	SCREW	6
S4	CTS3+8GR	SCREW	1
S5	CTS3+8JFC	SCREW	3
S6	CTW3+8JR	SCREW	7
S7	CTB3+10GR	SCREW	10
S8	CTB3+10GFZR	SCREW	10
S9	CHD1A059R	SCREW	2
S10	CTB4+6FR	SCREW	4
S11	CTB4+6FFC	SCREW	4



AG-H300MK3BUK EXPLODED VIEW

NO.	PARTS NO.	DESCRIPTION	Q'TY
1	CGU1A237Z	WINDOW, FIP	1
2	KGX1A289WA	KNOB, VOLUME ASS'Y	1
3	KGX1A289XA	KNOB, VOLUME ASS'Y	1
4	CBC1A098M7G5	KNOB, POWER	1
5	KGX1A292ZC35	ORNAMENT, FUNCTION	1
6	KGX1A290C35	ORNAMENT, FUNCTION	1
7	KGB1A047Z	BADGE	1
8	CBN1A124M7G5	KNOB, ROTARY	3
9	CKM2A102VC35	PANEL, FRONT(AL)	1
10	CGL1A133	INDICATOR, STANDBY	1
11	CGW1A284M7G5	PANEL, FRONT	1
12	CBT1A718M7G5	KNOB, TACT	1
13	CBT1A719M7ZG5	KNOB, TACT	1
14	CGU1A215A8	WINDOW, SENSOR	1
15	CGL2A134	INDICATOR	2
16	CBT1A495M7G5	CAP, STANDBY	1
17	CBT1A483	KNOB, STANDBY	1
18	CFLSVA10MS11	FIP	1
19	CMD1A374	BRACKET, FIP	2
20	CMD1A376	SUPPORT, LED	1
21	COP11377E	FRONT PCB ASS'Y	1
22	CHG1A337	EVA CUSHION	1
23	CKL2A055H45	FOOT	4
24	KHG1A050Y	CUSHION, FOOT	4
25	CUA1A186	CHASSIS, BOTTOM	1
26	CHG1A113	RUBBER	2
27	CMD1A387	BRACKET, PCB	2
28	COP11379E	MAIN PCB ASS'Y	1
29	CMY1A163	HEAT SINK	1
30	CMD1A416	BRACKET, PCB(H/T)	1
31	CLT5P038YE	TRANS, POWER	1
32	COP11892B	INPUT PCB ASS'Y	1
33	KKC1B112S35	CABINET, TOP	1
34	CKF2A204S	PANEL, REAR	1
35	KMA2A001	TERMINAL, GROUND	1
36	KHR1A028	BUSHING, AC CORD	1
37	CJA2E086Z	CODE, POWER	1
38	CNVMV114MA1-17	TUNER MODULE	1
39	CGX1A305	SUPPORT SHEET	4

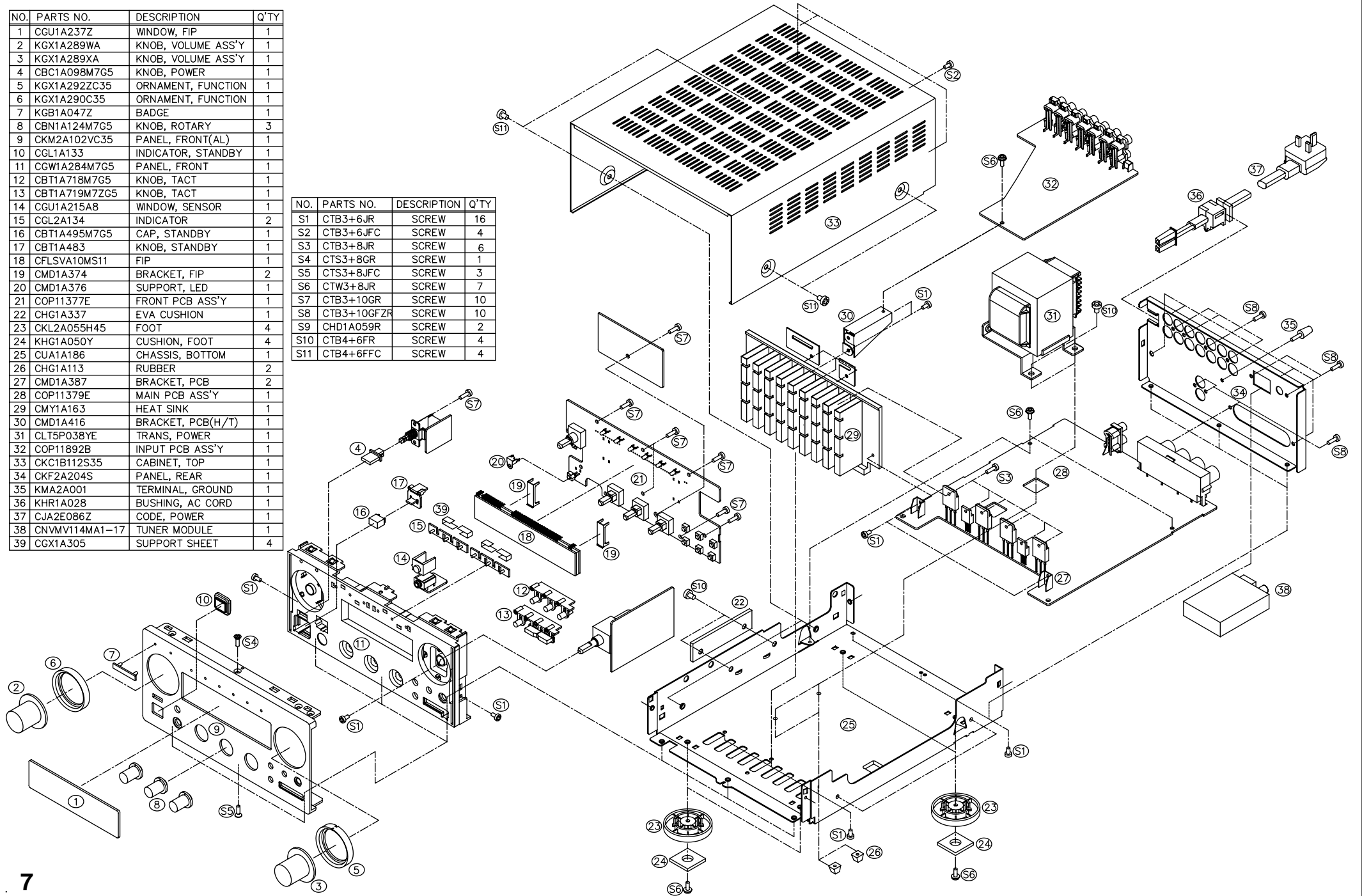
NO.	PARTS NO.	DESCRIPTION	Q'TY
S1	CTB3+6JR	SCREW	16
S2	CTB3+6JFC	SCREW	4
S3	CTB3+8JR	SCREW	6
S4	CTS3+8GR	SCREW	1
S5	CTS3+8JFC	SCREW	3
S6	CTW3+8JR	SCREW	7
S7	CTB3+10GR	SCREW	10
S8	CTB3+10GFZR	SCREW	10
S9	CHD1A059R	SCREW	2
S10	CTB4+6FR	SCREW	4
S11	CTB4+6FFC	SCREW	4



AG-H300MK3SUK EXPLODED VIEW

NO.	PARTS NO.	DESCRIPTION	Q'TY
1	CGU1A237Z	WINDOW, FIP	1
2	KGX1A289WA	KNOB, VOLUME ASS'Y	1
3	KGX1A289XA	KNOB, VOLUME ASS'Y	1
4	CBC1A098M7G5	KNOB, POWER	1
5	KGX1A292ZC35	ORNAMENT, FUNCTION	1
6	KGX1A290C35	ORNAMENT, FUNCTION	1
7	KGB1A047Z	BADGE	1
8	CBN1A124M7G5	KNOB, ROTARY	3
9	CKM2A102VC35	PANEL, FRONT(AL)	1
10	CGL1A133	INDICATOR, STANDBY	1
11	CGW1A284M7G5	PANEL, FRONT	1
12	CBT1A718M7G5	KNOB, TACT	1
13	CBT1A719M7G5	KNOB, TACT	1
14	CGU1A215A8	WINDOW, SENSOR	1
15	CGL2A134	INDICATOR	2
16	CBT1A495M7G5	CAP, STANDBY	1
17	CBT1A483	KNOB, STANDBY	1
18	CFLSVA10MS11	FIP	1
19	CMD1A374	BRACKET, FIP	2
20	CMD1A376	SUPPORT, LED	1
21	COP11377E	FRONT PCB ASS'Y	1
22	CHG1A337	EVA CUSHION	1
23	CKL2A055H45	FOOT	4
24	KHG1A050Y	CUSHION, FOOT	4
25	CUA1A186	CHASSIS, BOTTOM	1
26	CHG1A113	RUBBER	2
27	CMD1A387	BRACKET, PCB	2
28	COP11379E	MAIN PCB ASS'Y	1
29	CMY1A163	HEAT SINK	1
30	CMD1A416	BRACKET, PCB(H/T)	1
31	CLT5P038YE	TRANS, POWER	1
32	COP11892B	INPUT PCB ASS'Y	1
33	CKC1B112S35	CABINET, TOP	1
34	CKF2A204S	PANEL, REAR	1
35	KMA2A001	TERMINAL, GROUND	1
36	KHR1A028	BUSHING, AC CORD	1
37	CJA2E086Z	CODE, POWER	1
38	CNVMV114MA1-17	TUNER MODULE	1
39	CGX1A305	SUPPORT SHEET	4

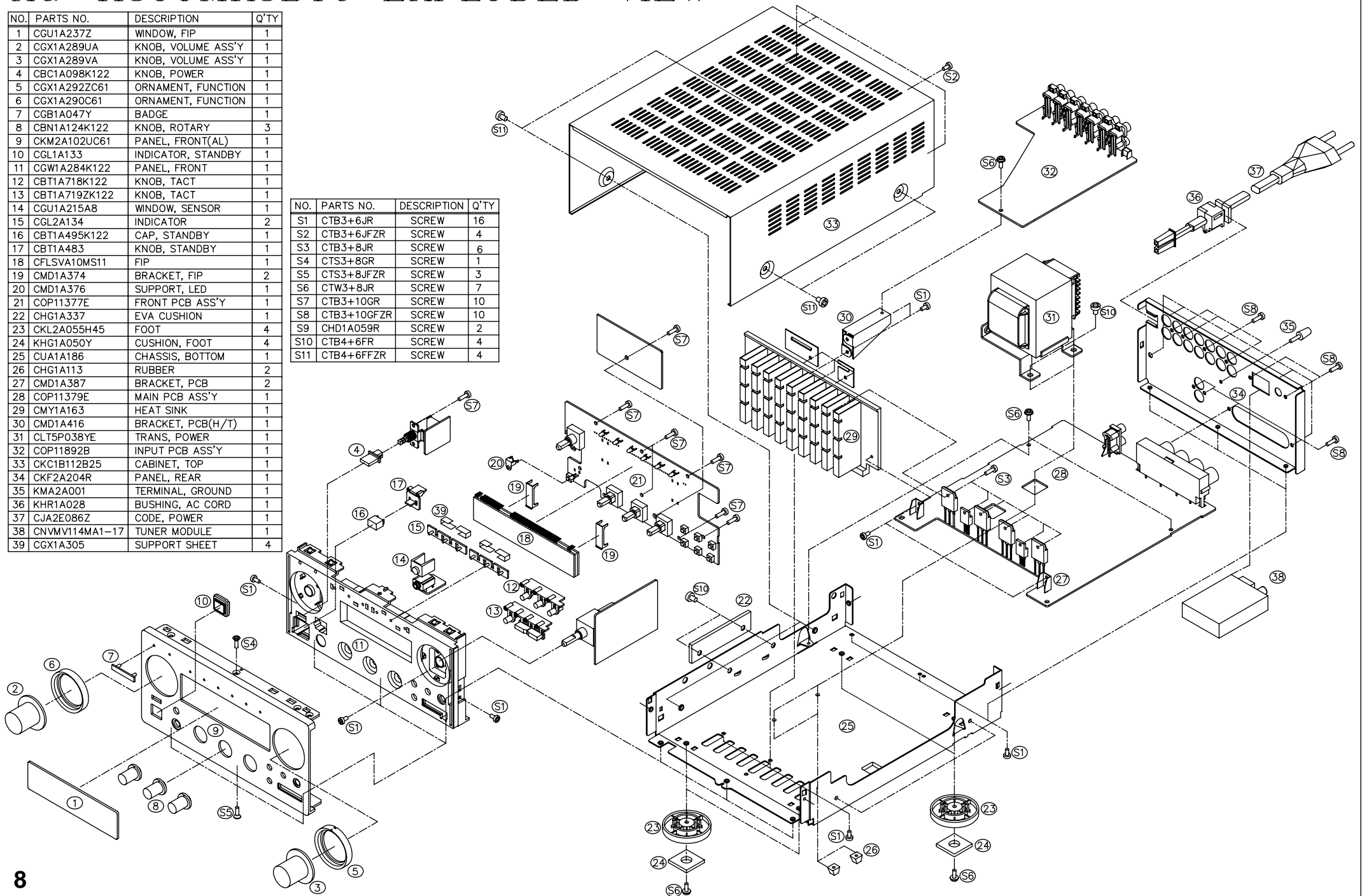
NO.	PARTS NO.	DESCRIPTION	Q'TY
S1	CTB3+6JR	SCREW	16
S2	CTB3+6JFC	SCREW	4
S3	CTB3+8JR	SCREW	6
S4	CTS3+8GR	SCREW	1
S5	CTS3+8JFC	SCREW	3
S6	CTW3+8JR	SCREW	7
S7	CTB3+10GR	SCREW	10
S8	CTB3+10GFZR	SCREW	10
S9	CHD1A059R	SCREW	2
S10	CTB4+6FR	SCREW	4
S11	CTB4+6FFC	SCREW	4



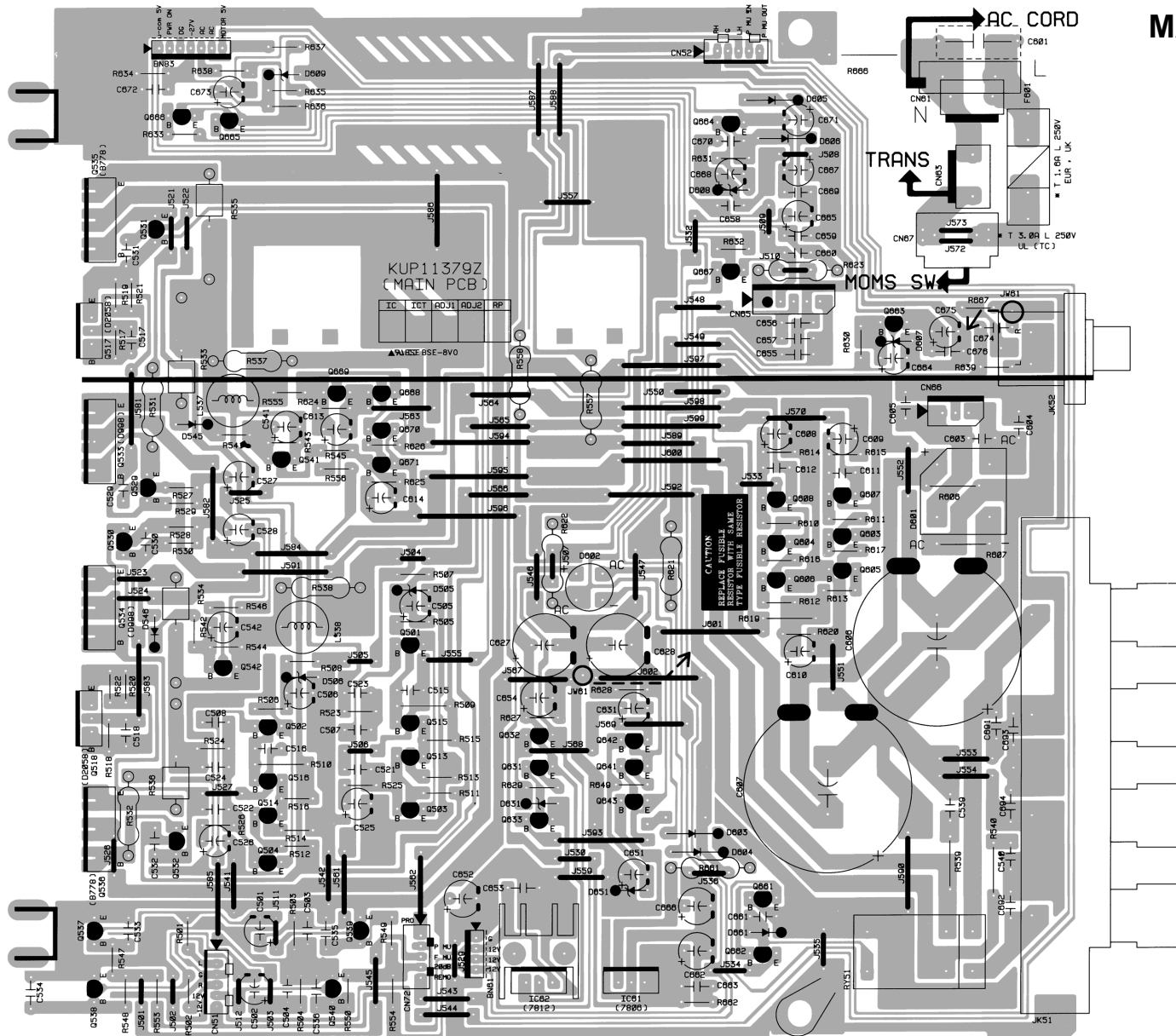
AG-H300MK3BTC EXPLODED VIEW

NO.	PARTS NO.	DESCRIPTION	Q'TY
1	CGU1A237Z	WINDOW, FIP	1
2	CGX1A289UA	KNOB, VOLUME ASS'Y	1
3	CGX1A289VA	KNOB, VOLUME ASS'Y	1
4	CBC1A098K122	KNOB, POWER	1
5	CGX1A292ZC61	ORNAMENT, FUNCTION	1
6	CGX1A290C61	ORNAMENT, FUNCTION	1
7	CGB1A047Y	BADGE	1
8	CBN1A124K122	KNOB, ROTARY	3
9	CKM2A102UC61	PANEL, FRONT(AL)	1
10	CGL1A133	INDICATOR, STANDBY	1
11	CGW1A284K122	PANEL, FRONT	1
12	CBT1A718K122	KNOB, TACT	1
13	CBT1A719ZK122	KNOB, TACT	1
14	CGU1A215A8	WINDOW, SENSOR	1
15	CGL2A134	INDICATOR	2
16	CBT1A495K122	CAP, STANDBY	1
17	CBT1A483	KNOB, STANDBY	1
18	CFLSVA10MS11	FIP	1
19	CMD1A374	BRACKET, FIP	2
20	CMD1A376	SUPPORT, LED	1
21	COP11377E	FRONT PCB ASS'Y	1
22	CHG1A337	EVA CUSHION	1
23	CKL2A055H45	FOOT	4
24	KHG1A050Y	CUSHION, FOOT	4
25	CUA1A186	CHASSIS, BOTTOM	1
26	CHG1A113	RUBBER	2
27	CMD1A387	BRACKET, PCB	2
28	COP11379E	MAIN PCB ASS'Y	1
29	CMY1A163	HEAT SINK	1
30	CMD1A416	BRACKET, PCB(H/T)	1
31	CLT5P038YE	TRANS, POWER	1
32	COP11892B	INPUT PCB ASS'Y	1
33	CKC1B112B25	CABINET, TOP	1
34	CKF2A204R	PANEL, REAR	1
35	KMA2A001	TERMINAL, GROUND	1
36	KHR1A028	BUSHING, AC CORD	1
37	CJA2E086Z	CODE, POWER	1
38	CNVMV114MA1-17	TUNER MODULE	1
39	CGX1A305	SUPPORT SHEET	4

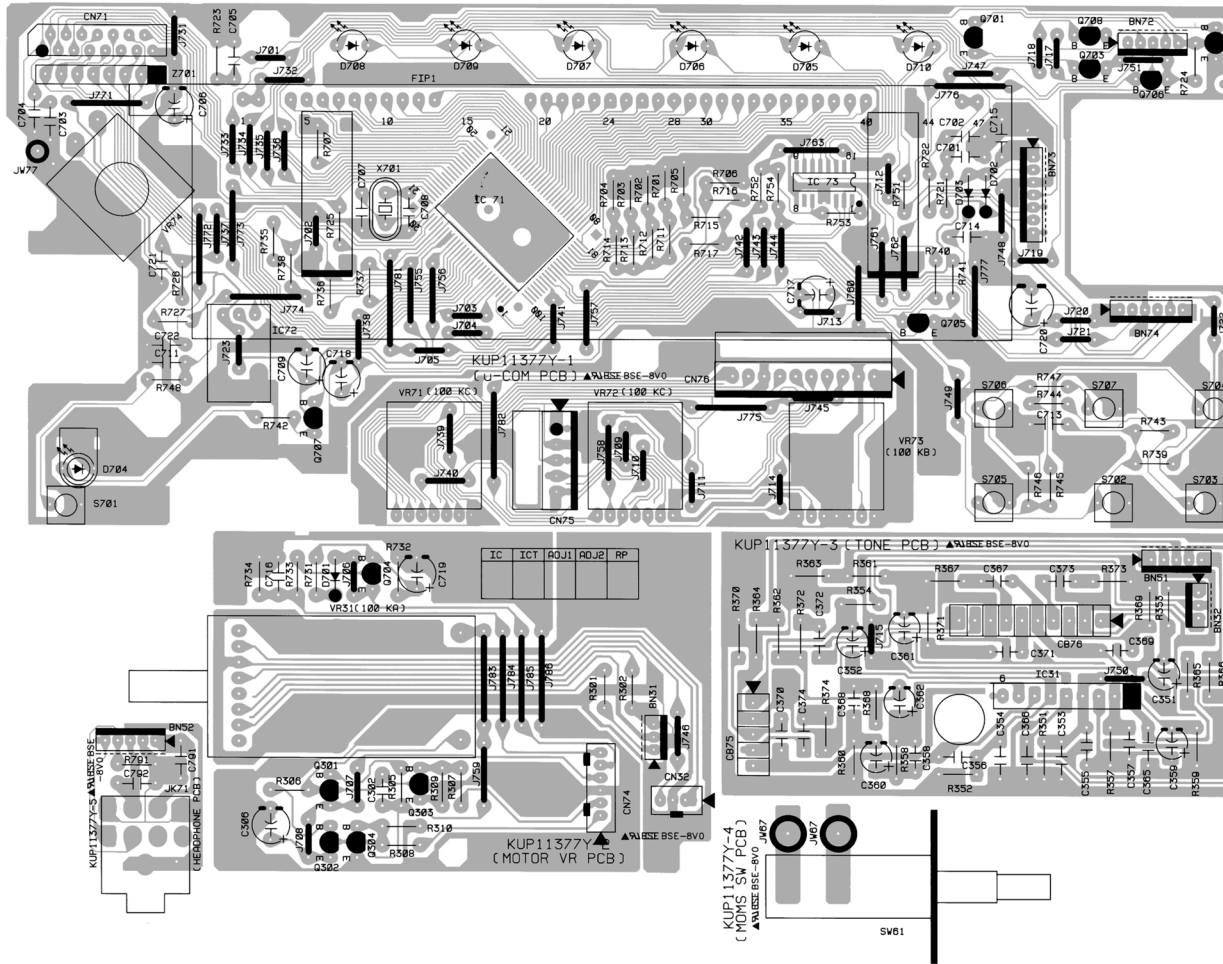
NO.	PARTS NO.	DESCRIPTION	Q'TY
S1	CTB3+6JR	SCREW	16
S2	CTB3+6JFZR	SCREW	4
S3	CTB3+8JR	SCREW	6
S4	CTS3+8GR	SCREW	1
S5	CTS3+8JFZR	SCREW	3
S6	CTW3+8JR	SCREW	7
S7	CTB3+10GR	SCREW	10
S8	CTB3+10GFZR	SCREW	10
S9	CHD1A059R	SCREW	2
S10	CTB4+6FR	SCREW	4
S11	CTB4+6FFZR	SCREW	4



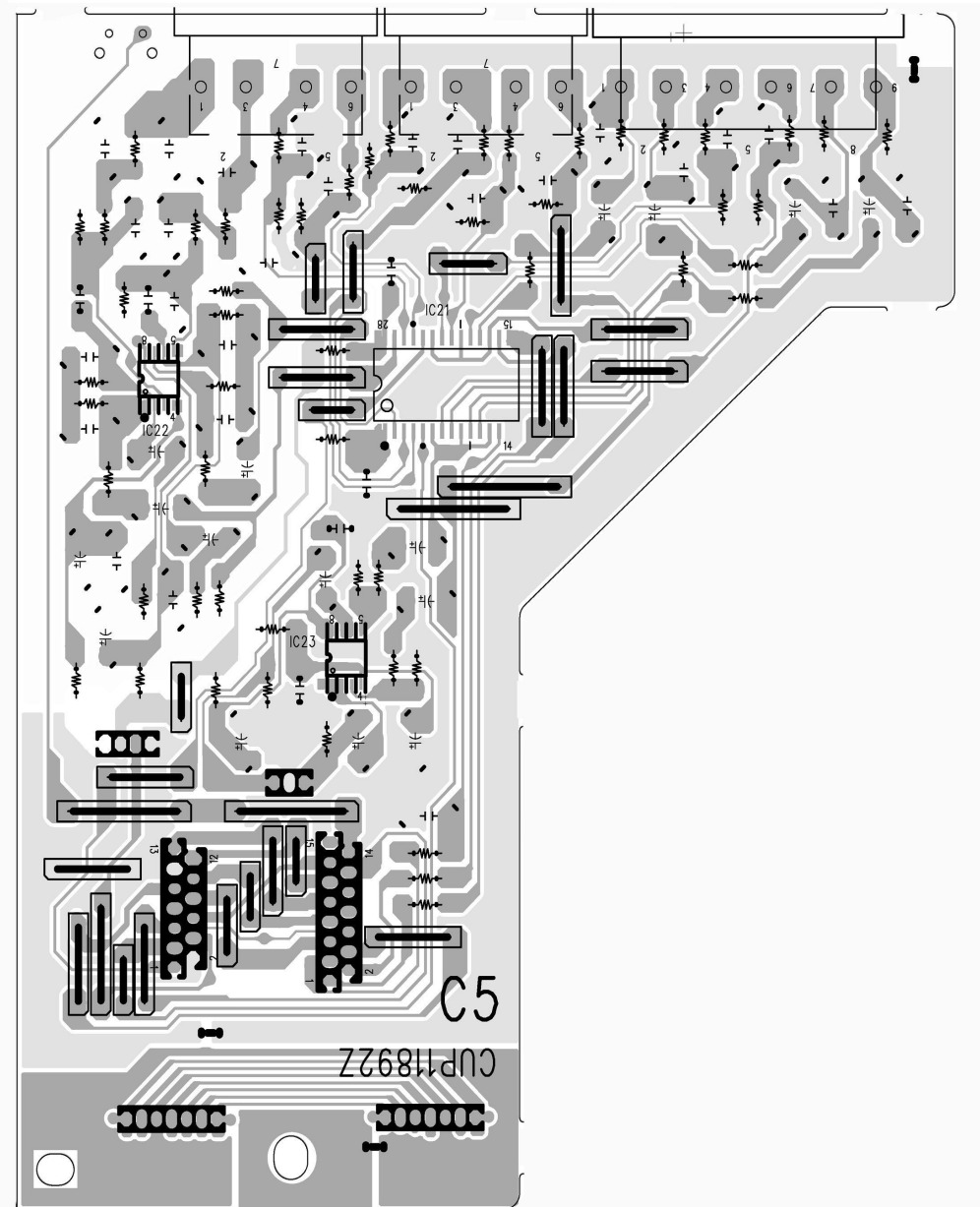
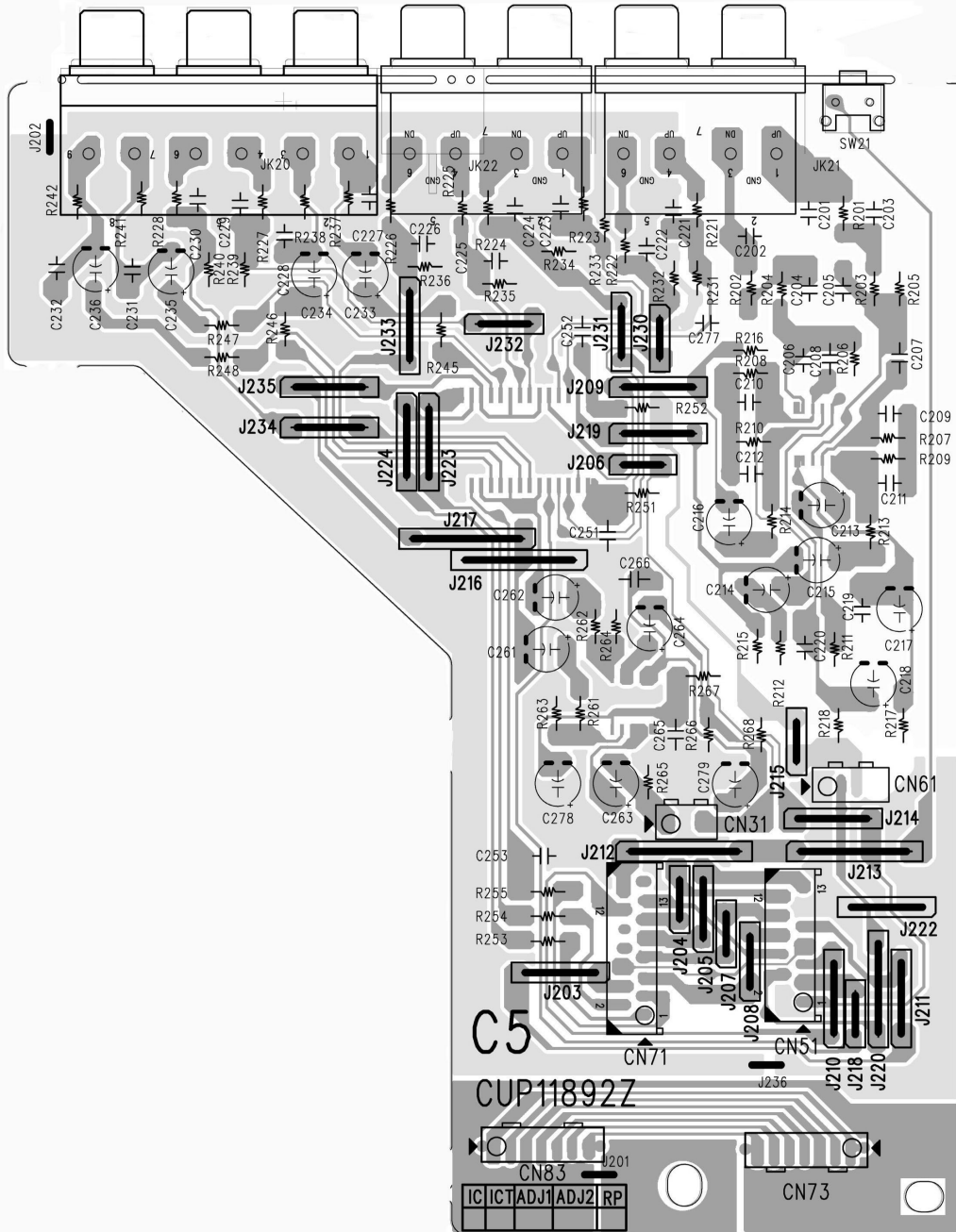
MAIN PCBA

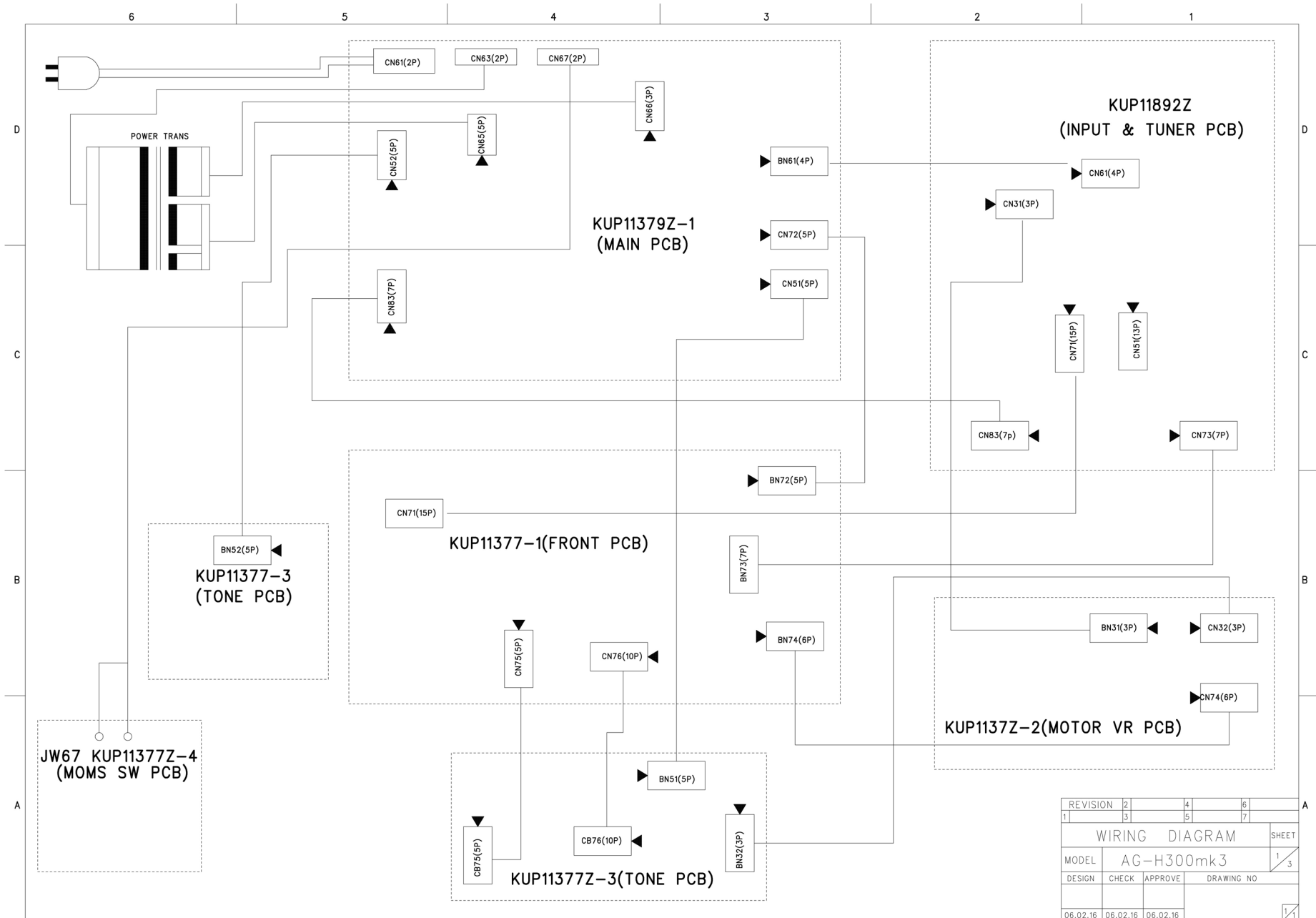


FRONT PCBA



IN PUT PCBA





REVISION	2	4	6
1	3	5	7
WIRING DIAGRAM			SHEET
MODEL	AG-H300mk3		1/3
DESIGN	CHECK	APPROVE	DRAWING NO
06.02.16	06.02.16	06.02.16	

A

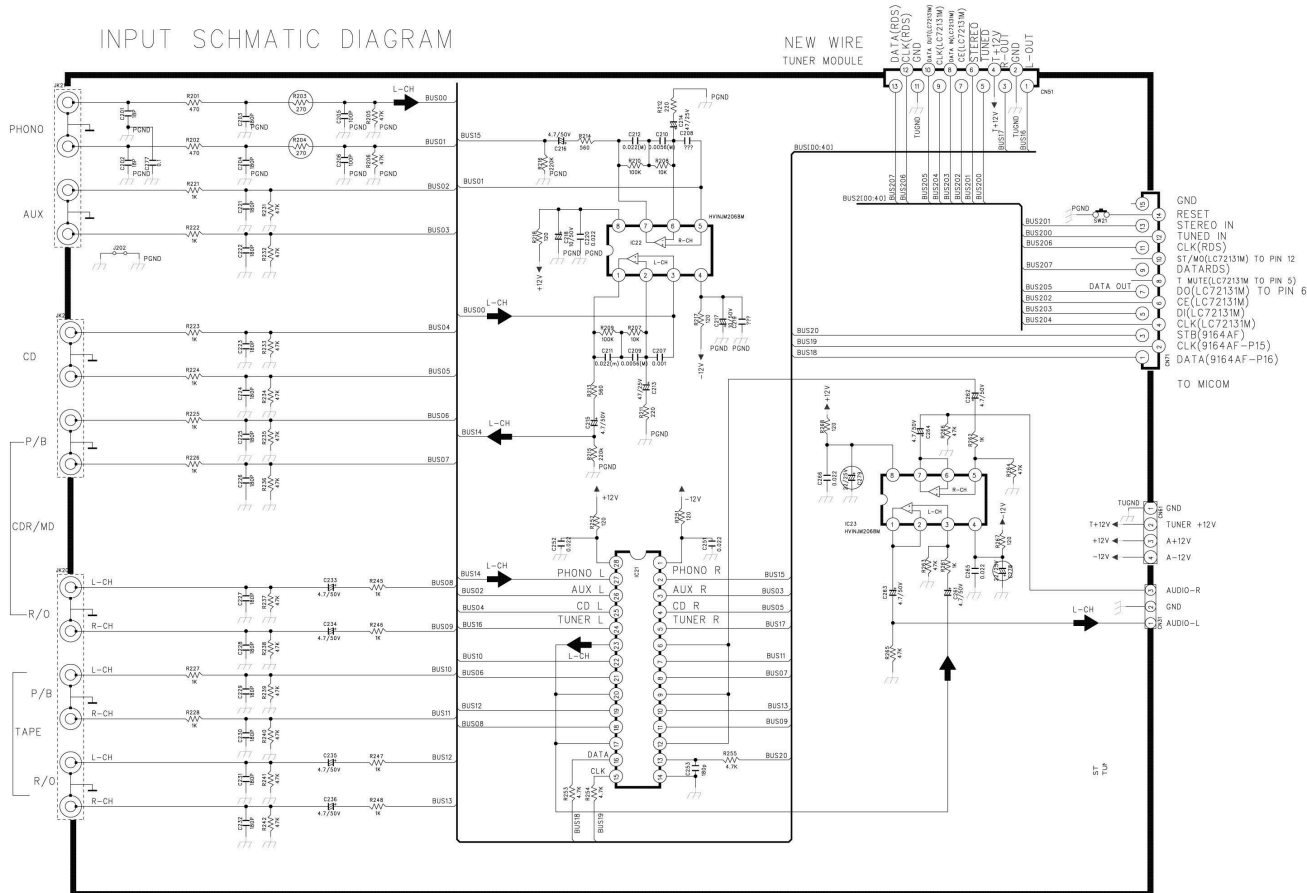
B

C

D

E

INPUT SCHEMATIC DIAGRAM



NOTES:

1. Resistor values are in ohms (k=kilo-ohms, M=megohms).
2. Capacitor values are in microfarads (μ=picofarads).
3. Δ Parts marked with this sign are safety critical components. They must always be replaced with identical components—refer to the appropriate parts list and ensure exact replacement.

注意

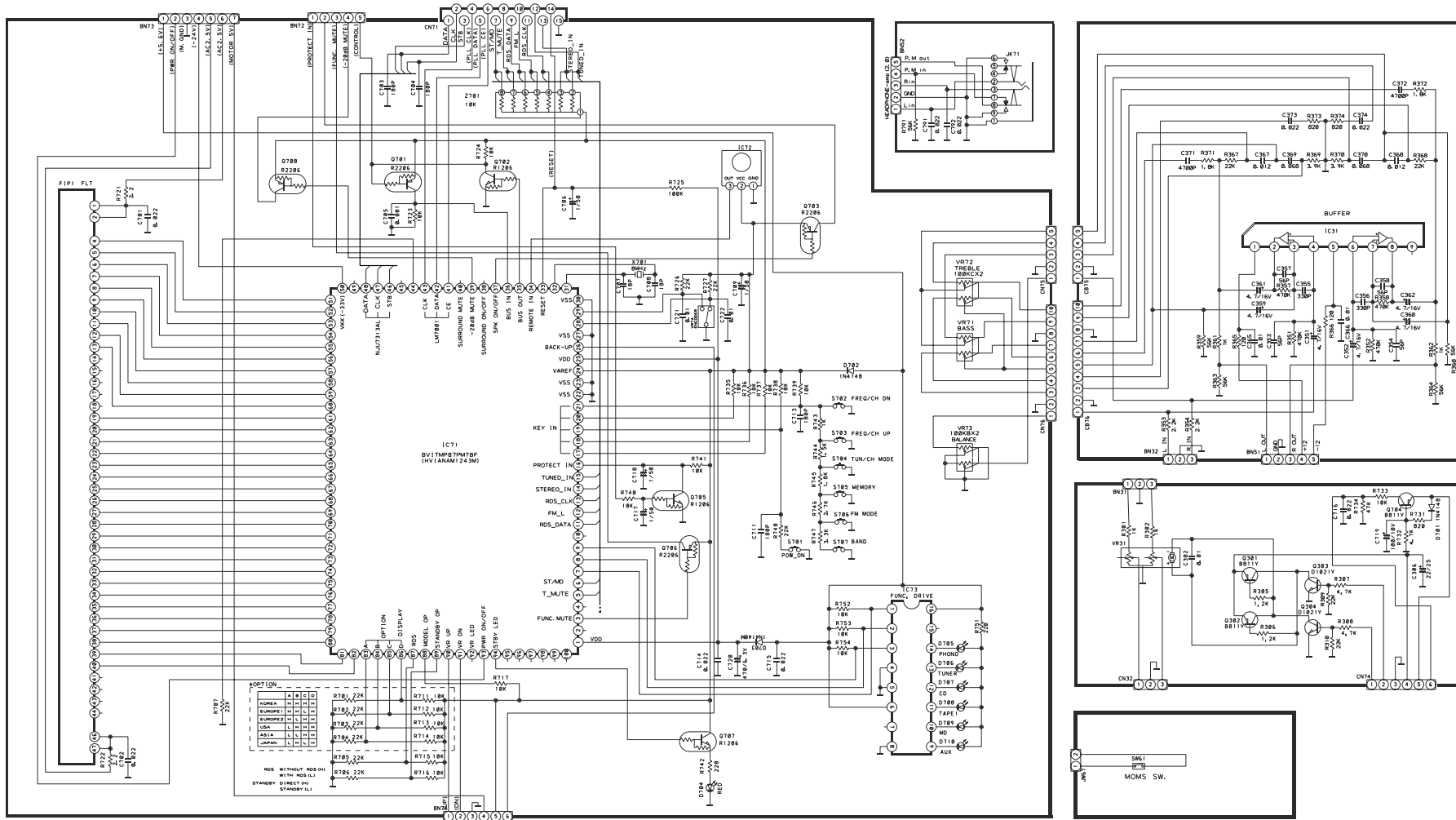
1. 抵抗の単位はΩ (k=kΩ, M=MΩ) です。
2. コンデンサの単位はμF (p=pF) です。
3. Δマークのある部品は安全規格重要部品です。交換するときは必ずティアック指定の部品を使用してください。

AG-H300mkIII
AM/FM STEREO RECEIVER

TEAC SCHEMATIC DIAGRAM AG-H300mk

1 2 3 4 5 6 7 8

A
B
C
D
E



INSTRUCTIONS FOR SERVICE PERSONNEL
 BEFORE RETURNING APPLIANCE TO THE CUSTOMER, MAKE LEAKAGE-CURRENT OR RESISTANCE MEASUREMENTS TO DETERMINE THAT EXPOSED PARTS ARE ACCEPTABLY INSULATED FROM THE SUPPLY CIRCUIT.

NOTES:
 1. Resistor values are in ohms (k=ki-lo-ohms, M=megohms).
 2. Capacitor values are in microfarads (p=picofarads).
 3. Δ Parts marked with this sign are safety critical components. They must always be replaced with identical components-refer to the appropriate parts list and ensure exact replacement.

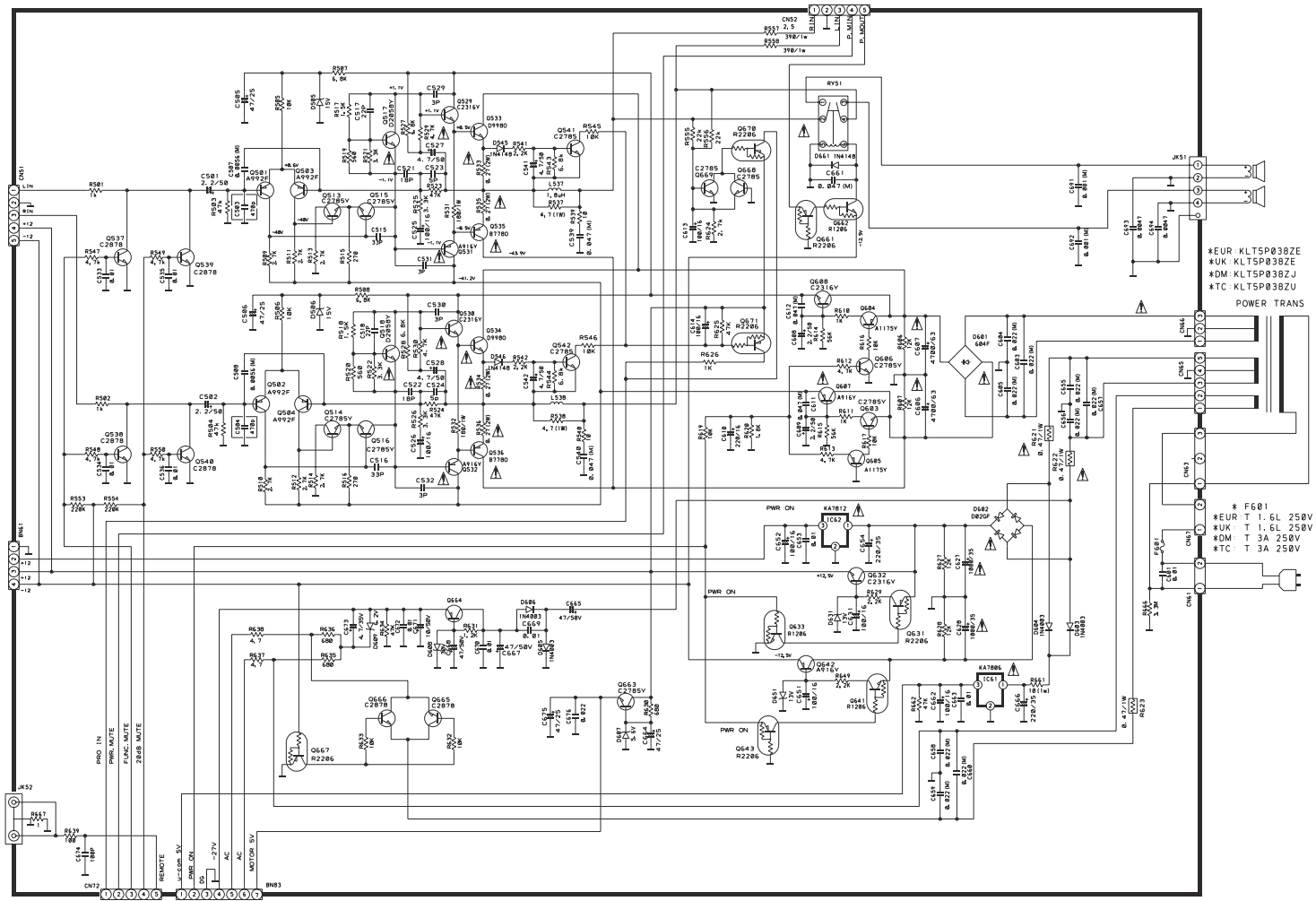
注意
 1. 抵抗の単位は Ω (k=k Ω , M=M Ω) です。
 2. コンデンサの単位は μF (p=pF) です。
 3. Δ マークのある部品は安全規格重要部品です。交換するときは必ずテック指定の部品を使用してください。

AG-H300mk

AM/FM STEREO RECEIVER

1st Issue; June 2001

A
B
C
D
E



INSTRUCTIONS FOR SERVICE PERSONNEL
 BEFORE RETURNING APPLIANCE TO THE CUSTOMER, MAKE LEAKAGE-CURRENT OR RESISTANCE MEASUREMENTS TO DETERMINE THAT EXPOSED PARTS ARE ACCEPTABLY INSULATED FROM THE SUPPLY CIRCUIT.

NOTES:
 1. Resistor values are in ohms (k=1kilo-ohms, M=megohms).
 2. Capacitor values are in microfarads (p=picofarads).
 3. Parts marked with this sign are safety critical components. They must always be replaced with identical components-refer to the appropriate parts list and ensure exact replacement.

注意
 1.抵抗の単位はΩ (k=kΩ, M=MΩ) です。
 2.コンデンサの単位はμF (p=pF) です。
 3.△マークのある部品は安全規格重要部品です。交換するときは必ずテック指定の部品を使用してください。

- *EUR KLTSP038ZE
 - *UK KLTSP038ZE
 - *DM KLTSP038ZJ
 - *TC KLTSP038ZU
- POWER TRANS
- * F601
 - *EUR T 1.6L 250V
 - *UK T 1.6L 250V
 - *DM T 3A 250V
 - *TC T 3A 250V