

TEAC



SERVICE MANUAL

AG-H350

AV Digital Home Theater Receiver



CONTENTS

1 SPECIFICATIONS	2
2 EXPLODED VIEWS AND PARTS LIST	4
3 PC BOARDS AND PARTS LIST	6
4 INCLUDED ACCESSORIES	12

目次

1 仕様	2
2 分解図とパーツリスト	4
3 基板図とパーツリスト	6
4 付属品	12

NOTES

- PC boards shown are viewed from parts side.
- The parts with no reference number or no parts number in the exploded views are not supplied.
- As regards the resistors and capacitors, refer to the circuit diagrams contained in this manual.
- △ Parts marked with this sign are safety critical components. They must be replaced with identical components - refer to the appropriate parts list and ensure exact replacement.
- Parts of [] mark can be used only with the version designated.
[J]:JAPAN [US]:U.S.A. [C]:CANADA [E]:EUROPE [UK]:U.K.

注 意

- プリント基板図は部品面を示しています。
- 分解図に部番のない部品および品番のない部品は供給できません。
- 標準の抵抗、コンデンサーは省略してあります。
回路図を参照してください。
- △印は安全重要部品です。
交換する時は必ず指定の部品を使用してください。
- 仕向先
[J]:JAPAN [US]:U.S.A. [C]:CANADA [E]:EUROPE [UK]:U.K.

1 SPECIFICATIONS

仕 様

Amplifier Section

Output Power (Stereo)

50 watts RMS per channel minimum, both channels driven into 8 ohms from 20 Hz to 20kHz with no more than 0.9% total harmonic distortion

Surround Output Power (0.9 % THD, 1 kHz, 8 ohms):

30 + 30 watts (Front)
30 watts (Center)
30 + 30 watts (Rear)

Total Harmonic Distortion (Stereo):

0.02% (at 50 watts, 1 kHz)

Delay Time:

DOLBY DIGITAL: REAR 0 – 15 ms
CENTER 0 – 5 ms

DOLBY PRO LOGIC: REAR 15 – 30 ms

Audio Input Sensitivity/Impedance:

* LINE: 250 mV/47 k ohms

Output Level/Impedance:

VCR/TAPE, CDR/MD: 230 mV / 2.2 k ohms

Frequency Response:

* LINE: 20 Hz – 65 kHz, +1 / –3 dB

Signal-to-Noise Ratio:

* LINE: 85 dB (IHF-A)

Tone Control:

BASS: ± 10 dB at 100 Hz
TREBLE: ± 10 dB at 10 kHz

Digital Audio Section

Sampling Frequency:

32 kHz, 44.1 kHz, 48 kHz

DIGITAL Input Level/Impedance:

COAXIAL: 0.5 Vp-p / 75 ohms
OPTICAL: –15 dBm to –21 dBm

Video Section

Input Sensitivity/Impedance:

1.0 Vp-p / 75 ohms

Output Level/Impedance:

1.0 Vp-p / 75 ohms

FM Tuner Section

(Without notes 100.1 MHz, 65 dBf)

Tuning Range:

87.5 MHz – 108.0 MHz (100 kHz steps) [U.S.A./Canada model]
87.5 MHz – 108.0 MHz (50 kHz steps) [Europe/U.K. model]

AM Suppression Ratio: 45 dB

Total Harmonic Distortion (1 kHz):

Mono: 0.4%
Stereo: 0.5%

Frequency Response:

30 Hz – 15 kHz, +1/ –1.5 dB

Stereo Separation (1 kHz): 40 dB

Signal-to-Noise Ratio:

Mono: 75 dB
Stereo: 70 dB

AM Tuner Section

Tuning Range:

530 kHz – 1,720 kHz (10 kHz steps) [U.S.A./Canada model]
522 kHz – 1,620 kHz (9 kHz steps) [Europe/U.K. model]

Usable Sensitivity: 55 dB/m

Total Harmonic Distortion:

0.8% at 85 dB/m

Signal-to-Noise Ratio:

45 dB at 85 dB/m

General

Power Requirements:

120 V AC, 60 Hz [U.S.A./Canada model]
230 V AC, 50 Hz [Europe/U.K. model]

Power Consumption:

2.2A [U.S.A./Canada model]
260 W [Europe/U.K. model]

Dimensions (W x H x D)

215 x 143 x 388 mm (8-7/16" x 5-5/8" x 15-1/4")

Weight (net): 7.6 kg (16-3/4 lbs)

Standard Accessories:

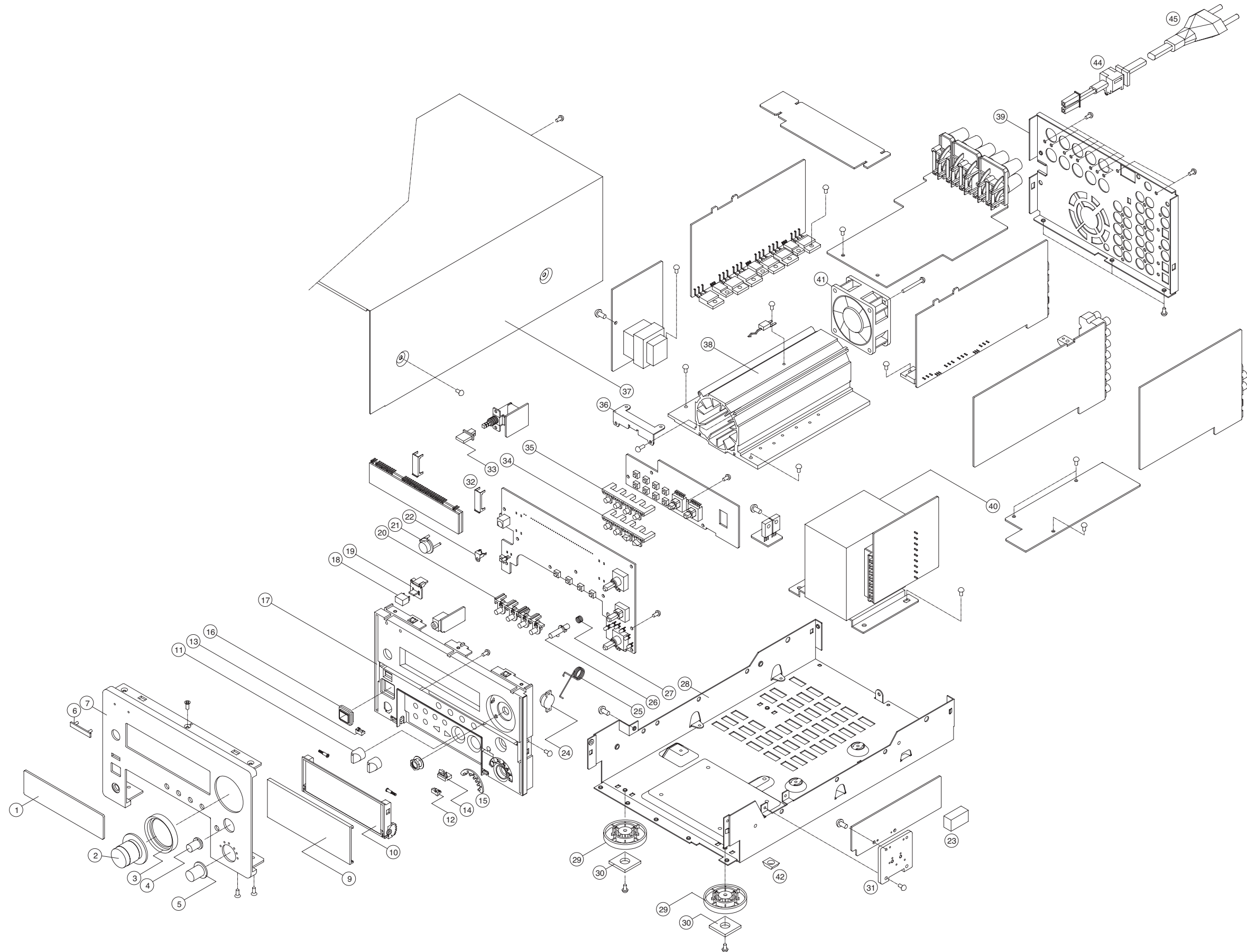
AM Loop Antenna x 1
FM T-type Antenna x 1 [U.S.A./Canada model]
FM Matching Transformer x 1 [U.S.A./Canada model]
FM Lead-type Antenna x 1 [Europe/U.K. model]
Remote Control Unit (RC-821) x 1

* LINE means VCR/TAPE, DVD, SAT/AUX, CD-R/MD and CD.

● Improvements may result in specifications and features changing without notice.

2 EXPLODED VIEWS AND PARTS LIST

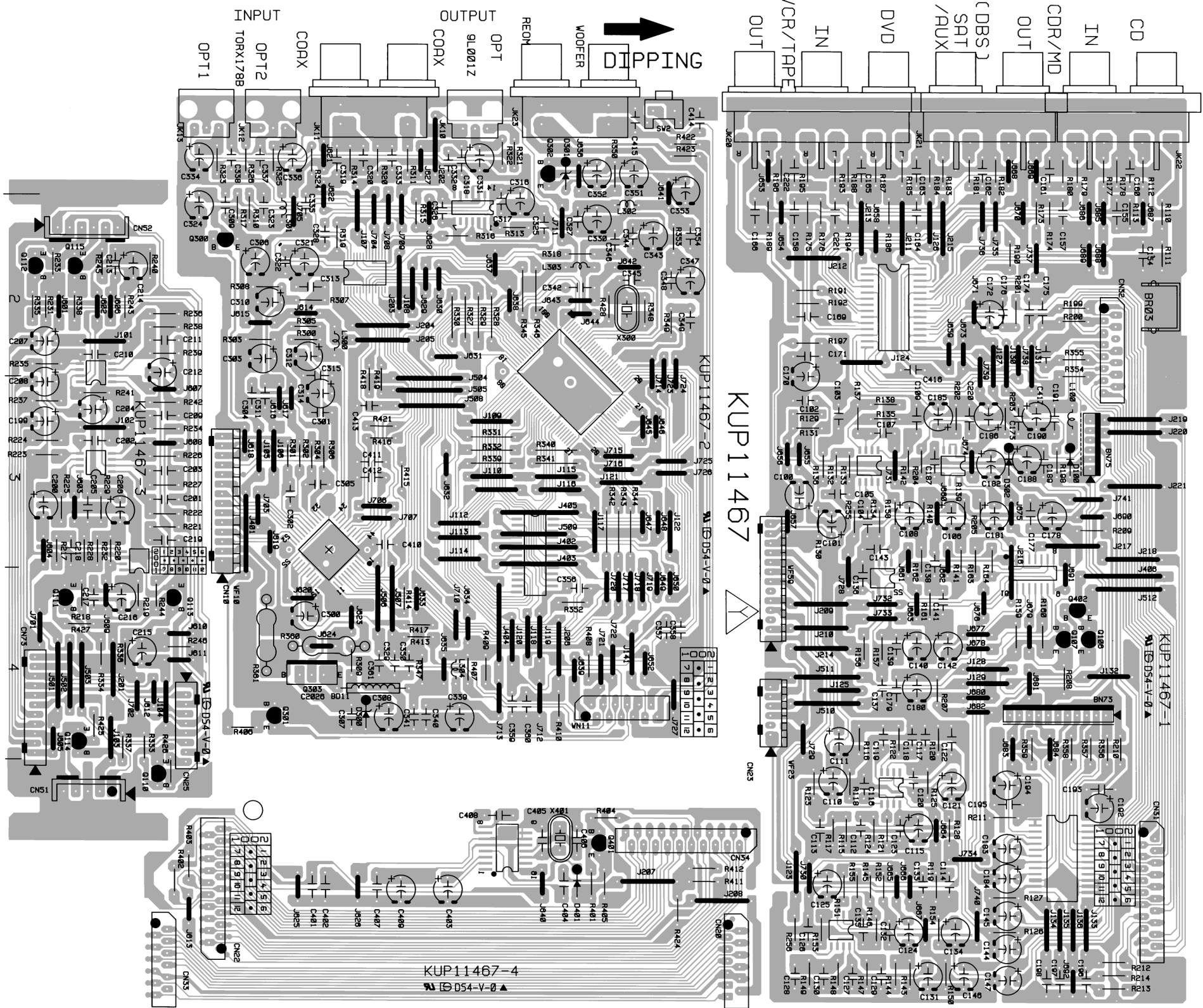
分解図とパーツリスト



EXPLODED VIEW LIST

REF. NO.	PARTS NO.	DESCRIPTION	REMARKS
1	9A09277500	WINDOW, FIP	KGU1A154W
2	9A09277200	VOLUME KNOB ASSY	KGK1A068ZA
3	9A08738700	ORNAMENT, FUNCTION	KGX1A290C11
4	9A07286800	KNOB, LEVEL	KBN1A098M9K79
5	9A06697400	VOLUME CAP ASSY(C)	KGX2A218ZA
6	9A06677900	BADGE	KGB1A047
7	9A09279900	PANEL, FRONT (AL)	KKM2A113YC11
9	9A09277000	ORNAMENR, DOOR (AL)	KGK1A066ZC11
10	9A09277400	DOOR, SUB	KGR1A244M9K79
11	9A09276400	KNOB, ROTARY	KBN1A146M9K79
12	9A09280400	HOLDER, DOOR (R)	KMH1A138M9
13	9A09280500	HOLDER, DOOR (L)	KMH1A139M9
14	9A09280300	LOCKER, DOOR	KMH1A137M9
15	9A09277300	INDICATOR, FUNCTION	KGL1A194
16	9A06863300	INDICATOR, STAND BY	KGL1A133
17	9A09277700	PANEL, SUB	KGW1A320M9YK79
18	9A07287200	CAP, STANBY	KBT1A495M9K79
19	9A06862500	KNOB, STAND BY	KBT1A483
20	9A07287000	KNOB, TACT	KBT1A492M9K79
21	9A06863501	WINDOW, SENSOR	KGU1A261
22	9A07290100	SUPPORT, LED	KMD1A376
23	9A05326800	RUBBER	KHG1A024
24	9A09276900	DAMPER GEAR ASSY	KDG1A006W
25	9A09283000	SPRING, DOOR	KUS1A127
26	9A09276300	KNOB, OPEN	KBC1A136M9K79
27	9A09282900	SPRING, OPEN	KUS1A126
28	9A09282400	CHASSIS, BOTTOM	KUA1A205
29	9A06864400	FOOT	KKL2A055M9K63
30	9A05837300	FOOT CUSHION	KHG1A050Y
31	9A09280800	HEAT SINK (B)	KMY1A186
32	9A07290000	BRACKET, FLT	KMD1A374
33	9A07434300	KNOB, POWER [E, UK]	KBC1A098M9K79
34	9A09276600	KNOB, SELECTOR	KBT1A773M9K79
35	9A09276500	KNOB, BAND	KBT1A772M9K79
36	9A09280200	BRACKET, PCB	KMD1A450
37	9A09279700	CABINET, TOP	KKC1B121S21
38	9A09280700	HEAT SINK (A)	KMY1A183
39	9A09279800	REAR PANEL [J]	KKF1A227X
	9A09279810	REAR PANEL [US, C]	KKF1A227Y
	9A09279820	REAR PANEL [E, UK]	KKF1A227Z
40	△ 9A09280100	TRANSFORMER, POWER [J]	KLT5U017ZJ
	△ 9A09280110	TRANSFORMER, POWER [US, C]	KLT5U017ZU
	△ 9A09280120	TRANSFORMER, POWER [E, UK]	KLT5U017ZE
41	9A09275100	FAN, MOTOR	BDMKD1206PTS3
42	9A05921700	RUBBER	KHG1A113
44	△ 9A06754900	BUSHING, AC CORD	KHR1A028
45	△ 9A08144000	POWER CORD [J]	BJA2J049Z
	△ 9A08043100	POWER CORD [US, C]	BJA523FBY
	△ 9A08152100	POWER CORD [E]	BJA2B043Z
	△ 9A09267600	POWER CORD [UK]	BJA2E045Z
F601	△ 9A06814200	FUSE [J]	KBA2C5000TLJ
F601	△ 9A09306400	FUSE, 5A 250V [US, C]	KBA2C5000TLU
F601	△ 9A09297300	FUSE, [E, UK]	KBA2C5000TLE
	9A09275300	TUNER MODULE [J]	BNVTFCE1J101A
	9A09306200	TUNER MODULE [US, C]	BNVTFCE1U116A
	9A09296900	TUNER MODULE [E, UK]	BNVTFCE1E320A
	9A08038100	RING, FERRITE [US, C, E, UK]	KLZ9W001Z

SURROUND PCB



MAIN PCB ASSY

REF. NO.	PARTS NO.	DESCRIPTION
	9A09281200	MAIN PCB ASSY [J]
	9A09281210	MAIN PCB ASSY [US, C]
	9A09281220	MAIN PCB ASSY [E, UK]
	9A09282500	PCB, MAIN
	9A09275100	FAN, MOTOR
	9A09280200	BRACKET, PCB
	9A09280700	HEAT SINK (A)
	9A09280900	HEAT SINK, DIODE
BD51-BD55	9A07050600	BEAD, CORE
BR01	9A07308700	BRACKET, PCB
BR61	9A05333900	PLATE, EARTH
C589	△ 9A05938300	C, ELECT 470UF/25V
C593	△ 9A08032200	C, LINE ACROSS 0.1UF/250V
C615, C616	△ 9A08034300	C, ELECT 2200UF/35V
C618, C619	△ 9A05922400	C, ELECT 6800UF/63V
CN23	9A07889700	WAFER, MOLEX 35336-0610
CN53, CN54	9A07330100	WAFER
CN55	9A05330300	WAFER, MOLEX 53014-0810
CN58	9A05329100	WAFER, MOLEX 5267-03A
CN59	9A09279300	WAFER
CN64	9A05328900	WAFER, MOLEX 5267-02A
CN68	9A06785000	WAFER, MOLEX 35328-02
CN69	9A06674400	WAFER
CN72	9A08036800	WAFER, MOLEX 35336-1410
CN76	9A05330400	WAFER, MOLEX 53014-0910
D501, D502	9A05193600	DIODE, ZENER MTZJ15BT
D503, D504	9A01390500	DIODE, 1N4148MT
D505	9A05193600	DIODE, ZENER MTZJ15BT
D506	9A01390500	DIODE, 1N4148MT
D507, D508	9A05193600	DIODE, ZENER MTZJ15BT
D509, D510	9A01390500	DIODE, 1N4148MT
D512-D516	9A01390500	DIODE, 1N4148MT
D517	△ 9A06759900	DIODE, KBU804F
D518	△ 9A05194600	DIODE, 1N4003SRT
D520	9A06236200	DIODE, ZENER MTZJ6.2BT
D521	9A05194600	DIODE, 1N4003SRT
D522, D523	9A06236200	DIODE, ZENER MTZJ6.2BT
D524-D532	9A01390500	DIODE, 1N4148MT
D533-D535	△ 9A05194600	DIODE, 1N4003SRT
D536, D537	9A01390500	DIODE, 1N4148MT
ET01	9A05333900	PLATE, EARTH
F601	9A05328200	HOLDER, FUSE
IC51	△ 9A09275800	IC, NJM7812FA
IC52	△ 9A09275900	IC, NJM7912FA
IC53-IC55	9A09275700	IC, NJM2279MTE1
IC56	9A07343300	IC, NJM2068MD-TE1
JK51	9A09278700	TERMINAL, SP (RRRR/BBBB)
JK52	9A07426900	TERMINAL, SP (R/B)
JK58-JK62	9A09278800	JACK, S-VIDEO+VHS
L503-L507	9A08037300	COIL, 0.5UH K
Q501	9A05196800	TR, KSC2316-Y-SHTA
Q502	9A03745100	TR, KSA1175-YTA
Q503, Q504	9A05341600	TR, KSA992-FTA
Q505, Q506	9A03745000	TR, KSC2785-YTA
Q507	9A05196700	TR, KSA916-Y-SHTA

MAIN PCB ASSY

REF. NO.	PARTS NO.	DESCRIPTION
Q508	9A05196800	TR, KSC2316-Y-SHTA
Q509	9A03745100	TR, KSA1175-YTA
Q510, Q511	9A05341600	TR, KSA992-FTA
Q512, Q513	9A03745000	TR, KSC2785-YTA
Q514	9A05196700	TR, KSA916-Y-SHTA
Q515	9A05196800	TR, KSC2316-Y-SHTA
Q516, Q517	9A05341600	TR, KSA992-FTA
Q518	9A03745100	TR, KSA1175-YTA
Q519, Q520	9A03745000	TR, KSC2785-YTA
Q521	9A05196700	TR, KSA916-Y-SHTA
Q522, Q523	9A05196800	TR, KSC2316-Y-SHTA
Q524, Q525	9A03745100	TR, KSA1175-YTA
Q526-Q529	9A05341600	TR, KSA992-FTA
Q530, Q531	9A03745000	TR, KSC2785-YTA
Q532	9A05196700	TR, KSA916-Y-SHTA
Q533, Q534	9A03745000	TR, KSC2785-YTA
Q535	9A05196700	TR, KSA916-Y-SHTA
Q536	9A08745700	TR, KTC2026Y
Q537	△ 9A05359800	TR, KTD9980
Q538	△ 9A05359700	TR, KTB7780
Q539	9A08745700	TR, KTC2026Y
Q540	△ 9A05359800	TR, KTD9980
Q541	△ 9A05359700	TR, KTB7780
Q542	9A08745700	TR, KTC2026Y
Q543	△ 9A05359800	TR, KTD9980
Q544	△ 9A05359700	TR, KTB7780
Q545	9A08745700	TR, KTC2026Y
Q546	△ 9A05359800	TR, KTD9980
Q547	△ 9A05359700	TR, KTB7780
Q548	9A08745700	TR, KTC2026Y
Q549	△ 9A05359800	TR, KTD9980
Q550	△ 9A05359700	TR, KTB7780
Q551	9A05197200	TR, KTA1271YT
Q552, Q553	9A03745000	TR, KSC2785-YTA
Q554	9A08791100	TR, KRC107M
Q555	9A08791000	TR, KRA107M
Q556-Q558	9A08791100	TR, KRC107M
Q559	9A09283100	TR, KRA102MT
Q560	9A08791000	TR, KRA107M
Q561	△ 9A05196800	TR, KSC2316-Y-SHTA
Q562	9A08791100	TR, KRC107M
Q564	△ 9A08745700	TR, KTC2026Y
Q565	△ 9A09283400	TR, KTA1046Y
Q566, Q567	9A08791000	TR, KRA107M
Q568	9A08791000	TR, KRA107M
R591	△ 9A05896300	R, 0.22 OHM 5W
R592	△ 9A06234600	R, METAL OXIDE FILM
R593, R594	△ 9A05896300	R, 0.22 OHM 5W
R595	△ 9A06234600	R, METAL OXIDE FILM
R596	△ 9A05896300	R, 0.22 OHM 5W
R597	△ 9A06234600	R, METAL OXIDE FILM
R598, R599	△ 9A05896300	R, 0.22 OHM 5W
R600	△ 9A06234600	R, METAL OXIDE FILM
R601	△ 9A05896300	R, 0.22 OHM 5W
R602	△ 9A06234600	R, METAL OXIDE FILM

MAIN PCB ASSY

REF. NO.	PARTS NO.	DESCRIPTION
R603-R605	△ 9A05896300	R, 0.22 OHM 5W
R621-R624	△ 9A05338000	R, METAL 10 OHM 1W J
R625, R626	△ 9A07892200	R, METAL 330 OHM 1W J
R627	△ 9A05338000	R, METAL 10 OHM 1W J
R639	△ 9A06761000	R, CARBON 3.3M K 1/2W [US, C]
RY51, RY52	9A07326100	RELAY
RY53	9A09275400	RELAY
RY54	9A07326100	RELAY
RY55	△ 9A09275400	RELAY
SW61	9A09275600	SW, SLIDE
T501	△ 9A09280000	TRANS, SUB [J]
T501	△ 9A09280010	TRANS, SUB [US, C]
T501	△ 9A09280020	TRANS, SUB [E, UK]
THR1	9A08039800	THERMAL SENSOR, POSISTOR
WF51	9A09279000	HOUSING
WF52	9A09279200	HOUSING, ANGLE
WF53, WF54	9A07330200	HOUSING, ANGLE
WF73	9A05329700	WAFER, MOLEX 53014-0610

SURROUND PCB ASSY

REF. NO.	PARTS NO.	DESCRIPTION
	9A09281300	SURROUND PCB ASSY [J]
	9A09281310	SURROUND PCB ASSY [US, C]
	9A09281320	SURROUND PCB ASSY [E, UK]
	9A09282600	PCB, SURROUND
BD11	9A07050600	BEAD, CORE
CN20	9A09279500	WAFER, CARD CABLE
CN22	9A07890800	WAFER, CARD CABLE GF120-2
CN23	9A07889700	WAFER, MOLEX 35336-0610 [E, UK]
CN25	9A05330300	WAFER, MOLEX 53014-0810
CN31	9A07890800	WAFER, CARD CABLE GF120-2
CN32	9A08220000	WAFER, CARD CABLE
CN33	9A09279500	WAFER, CARD CABLE
CN34	9A07890800	WAFER, CARD CABLE GF120-2
CN51	9A09278900	WAFER
CN52	9A09279100	WAFER
CN73	9A05330900	WAFER, MOLEX 53014
D100	9A01390500	DIODE, 1N4148MT
D300	9A06765300	DIODE, MTZJ5.6BT
D301	9A06236100	DIODE, ZENER MTZJ4.7BT
D302	9A01390500	DIODE, 1N4148MT
IC10	9A08033700	IC, YSS912
IC11	9A08903900	IC, AK4527VQ
IC12	9A08032900	IC, 256K SRAM
IC13	9A08948100	IC, AK4112VF
IC14	9A07044300	IC, TC74HCU04AFN
IC20-IC23	9A07343300	IC, NJM2068MD-TE1
IC25	9A09276100	IC, TC9215AF
IC26	9A08033500	IC, TC9482F
IC27	9A07424801	IC, TC9163AF
IC28-IC31	9A07343300	IC, NJM2068MD-TE1

SURROUND PCB ASSY

REF. NO.	PARTS NO.	DESCRIPTION
JK10	9A06239100	MODULE, OPTICAL
JK11	9A09278500	JACK, BOARD
JK12, JK13	9A09275200	MODULE, OPTICAL (RX)
JK20	9A09278600	JACK, BOARD
JK21, JK22	9A07289400	JACK, BOARD
JK23	9A06230200	JACK, REMOTE (2P)
L100, L300	9A05356900	COIL, 10UH K
L301	9A07330400	COIL
L302	9A08037600	COIL, PEAKING
L303, L304	9A05356900	COIL, 10UH K
Q106	9A08791100	TR, KRC107M
Q107	9A08791000	TR, KRA107M
Q110-Q115	9A05197500	TR, KTD1302T
Q300	9A05196700	TR, KSA916-Y-SHTA
Q301	9A08791000	TR, KRA107M
Q302	9A05196800	TR, KSC2316-Y-SHTA
Q303	9A08745700	TR KTC2026Y
Q401	9A06183000	TR, KSC945YT [E, UK]
Q402	9A09283200	TR, KRA111M
R360	△ 9A05896400	R, 4.7 OHM 1W
R361	△ 9A05338000	R, METAL 10 OHM 1W J
S001	9A04882400	SW, TACT
WF10	9A08036900	WAFER, MOLEX 35237-1410 [J, US, C]
WF23	9A07889800	CONNECTOR, MOLEX 35237-0610 [J, US, C]
WF59	9A09279400	CONNECTOR
WN11	9A09279500	WAFER, CARD CABLE
X300	9A08039000	CRYSTAL
X400	9A07501700	CRYSTAL [E, UK]

FRONT PCB ASSY

REF. NO.	PARTS NO.	DESCRIPTION
	9A09281400	FRONT PCB ASSY [J]
	9A09281410	FRONT PCB ASSY [US, C]
	9A09281420	FRONT PCB ASSY [E, UK]
	9A09282700	PCB, FRONT
	9A07290000	BRACKET, FLT
	9A07290100	SUPPORT, LED
C768	△ 9A06764800	C, ELECT 100UF/50V
C772	△ 9A06764800	C, ELECT 100UF/50V
C773	△ 9A08882700	C, CERAMIC (KH TYPE) [E, UK]
CN11	9A09279600	WAFER, CARD CABLE
CN22	9A07890900	WAFER, CARD CABLE GF120-21S-L
CN53	9A06785000	WAFER, MOLEX 35328-02 [E, UK]
CN56	9A05892600	WAFER, 9P
CN57	9A05329600	WAFER, MOLEX 5267-06A
CN66	9A05938500	WAFER, 3P
CN71	9A05356300	WAFER, 04GA19ZM
CN74	9A06676900	WAFER
CN77	9A06250600	WAFER, 02GA19ZM
D701	9A01390500	DIODE, 1N4148MT [J]
D701-D703	9A01390500	DIODE, 1N4148MT [US, C]

FRONT PCB ASSY

REF. NO.	PARTS NO.	DESCRIPTION
D703, D704	9A01390500	DIODE, 1N4148MT [E, UK]
D707-D710	9A01390500	DIODE, 1N4148MT
D712-D717	9A08131100	LED, YELLOW SLR342YCTB7
D720	9A08131100	LED, YELLOW SLR342YCTB7
D721-D724 \triangle	9A05194700	DIODE, 1N4003ST
D725	9A06236200	DIODE, ZENER MTZJ6.2BT
D726	9A05194700	DIODE, 1N4003ST
D727	9A05193800	DIODE, ZENER MTZJ33BT
D728	9A05194700	DIODE, 1N4003ST
D729-D731	9A01390500	DIODE, 1N4148MT
F701, F702 \triangle	9A06760000	FUSE, LEAD F6A 250V
FIP1	9A08034600	FIP, SVA-10MS11
IC72	9A08033200	IC, MC74HC14D
IC73	9A09276000	IC, NJU3713G
IC75	9A09276200	IC, TMP87PS71AF
IC76, IC77	9A07343300	IC, NJM2068MD-TE1
JK01	9A06861800	JACK, HEADPHONE
L701	9A05356900	COIL, 10UH K
Q702	9A03747300	TR, KSB811-YTA
Q703	9A08791000	TR, KRA107M
Q704	9A08791100	TR, KRC107M
Q705	9A08791000	TR, KRA107M
R771, R772 \triangle	9A06760900	R, FUSE 0.47 OHM 1W J
RC71	9A08563600	SENSOR, REMOCON
RY71	9A09275500	RELAY
S701	9A04882500	SW, TACT SKHV10910A
S704-S715	9A04882500	SW, TACT SKHV10910A
SW71 \triangle	9A06784700	SW, PUSH [E, UK]
VR01, VR02	9A09283600	R, VARIABLE
VR03	9A09283500	R, VARIABLE
VR04	9A06224700	VR, ENCODOR
VR05	9A08124200	VR, ENCODER
X702	9A05193000	CRYSTAL

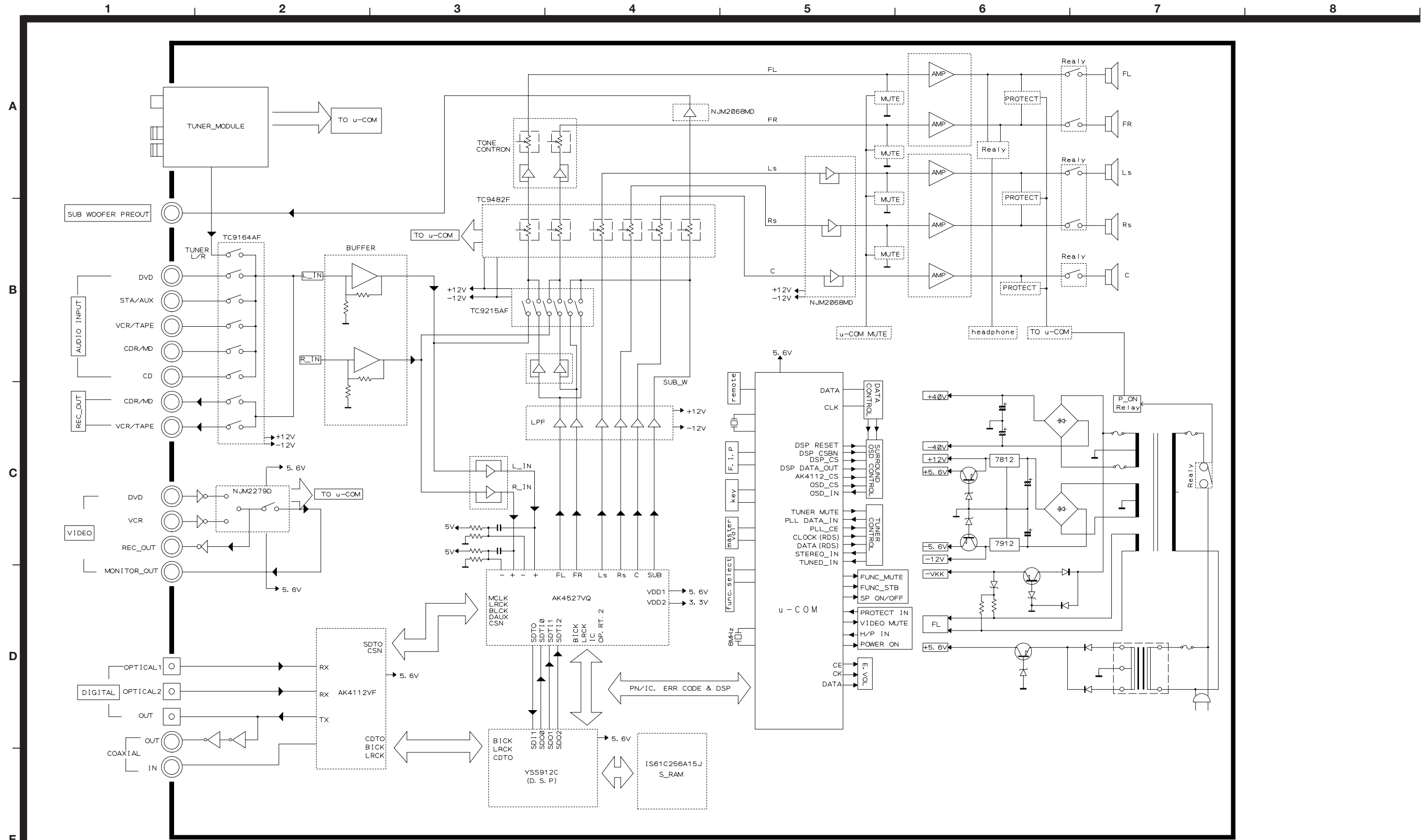
4 INCLUDED ACCESSORIES

付属品

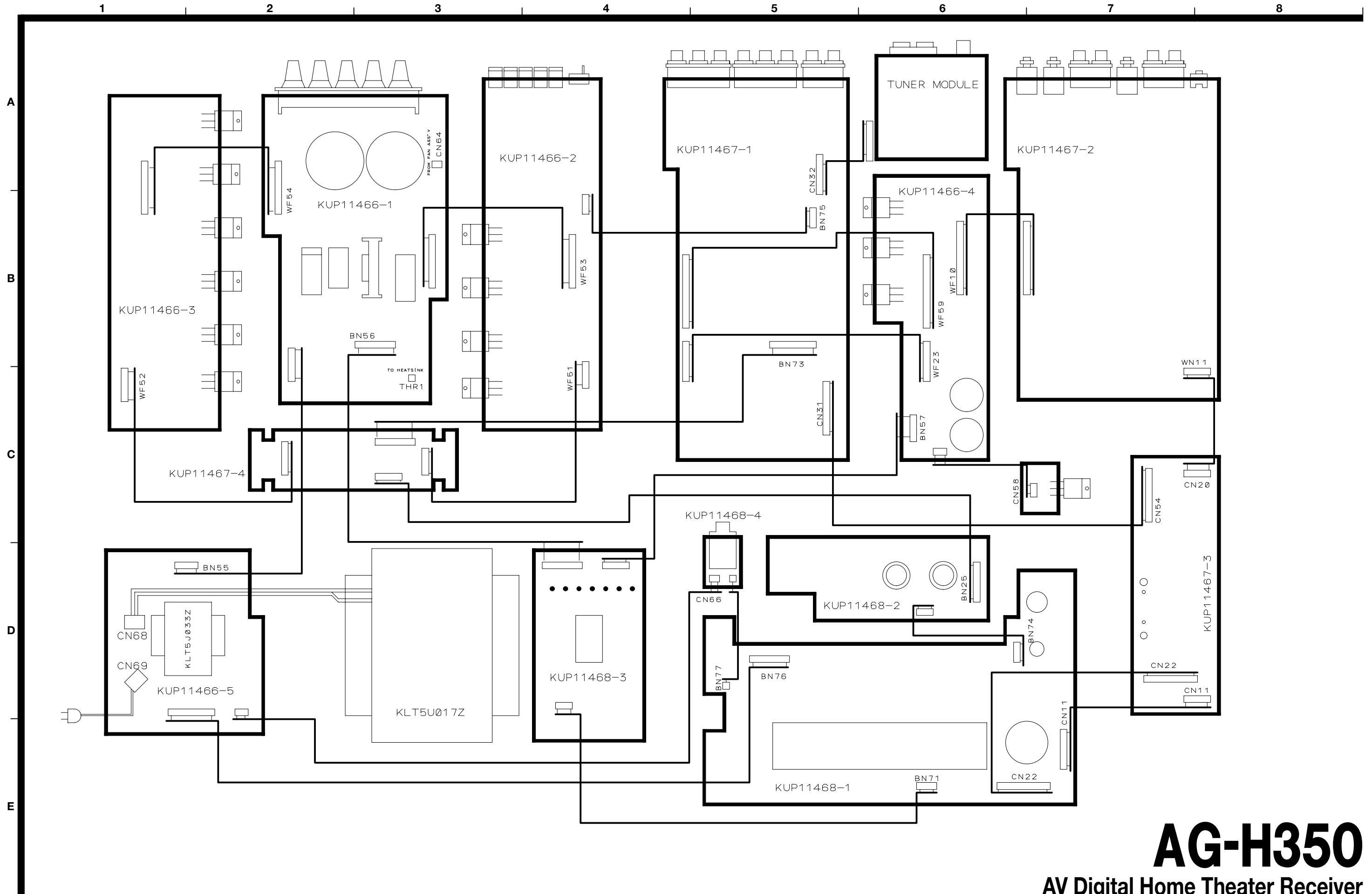
INCLUDED ACCESSORIES

REF. NO.	PARTS NO.	DESCRIPTION	REMARKS
	9A08901400	OWNER'S MNL, J [J]	KQX1A722Z
	9A08901200	OWNER'S MNL, E/F [US, C]	KQX1A710Z
	9A08901300	OWNER'S MNL, E/F/G/I/S [E, UK]	KQX1A709Z
	9A09148000	REMOTE CONTROL ASSY, RC-821	KARTAGH550
	9A08153900	BATTERY [J]	KABAAM1.5V
	9A01397000	ANTENNA TERMINAL [J, US, C]	KSA267
	9A08046100	ADAPTOR, 75-300 [J, US, C]	KLR1T201
	9A04883100	ANT, FM WIRE [E, UK]	KSA1A007
	9A09282200	ANT, AM LOOP	KSA3A013Z

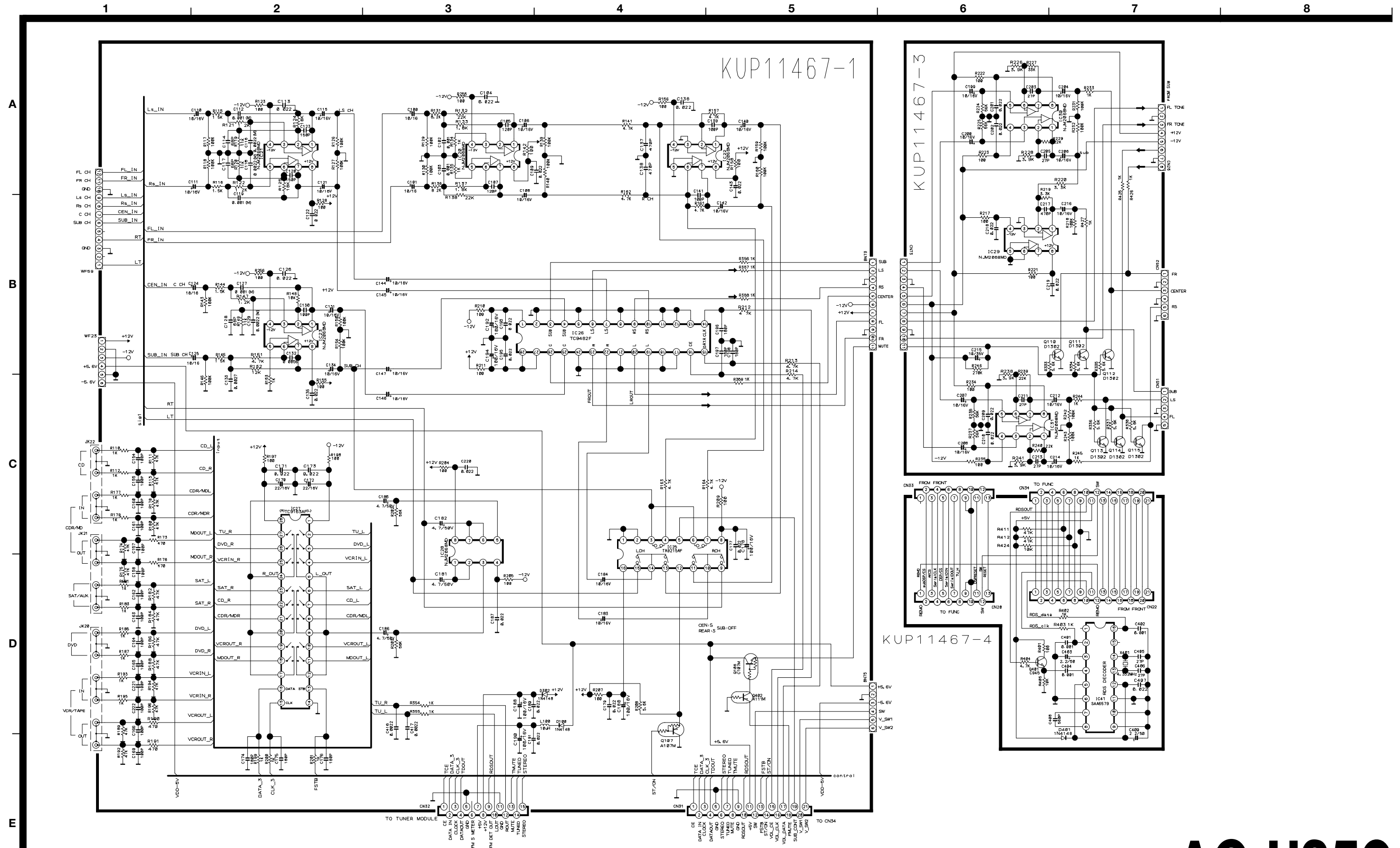
TEAC BLOCK DIAGRAM AG-H350



TEAC WIRING DIAGRAM AG-H350



TEAC SCHEMATIC DIAGRAM AG-H350



NOTES:
 1. Resistor values are in ohms (k=kilo-ohms, M=Megohms).
 2. Capacitor values are in microfarads (p=picofarads).
 3. Δ Parts marked with this sign are safety critical components. They must always be replaced with identical components-refer to the appropriate parts list and ensure exact replacement.

注意
 1. 抵抗の単位は Ω (k=k Ω , M=M Ω)です。
 2. コンデンサの単位は μF (p=pF)です。
 3. Δ マークのある部品は安全規格重要部品です。交換するときは必ずティアック指定の部品を使用してください。

AG-H350

AV Digital Home Theater Receiver
 1st Issue; January 2002

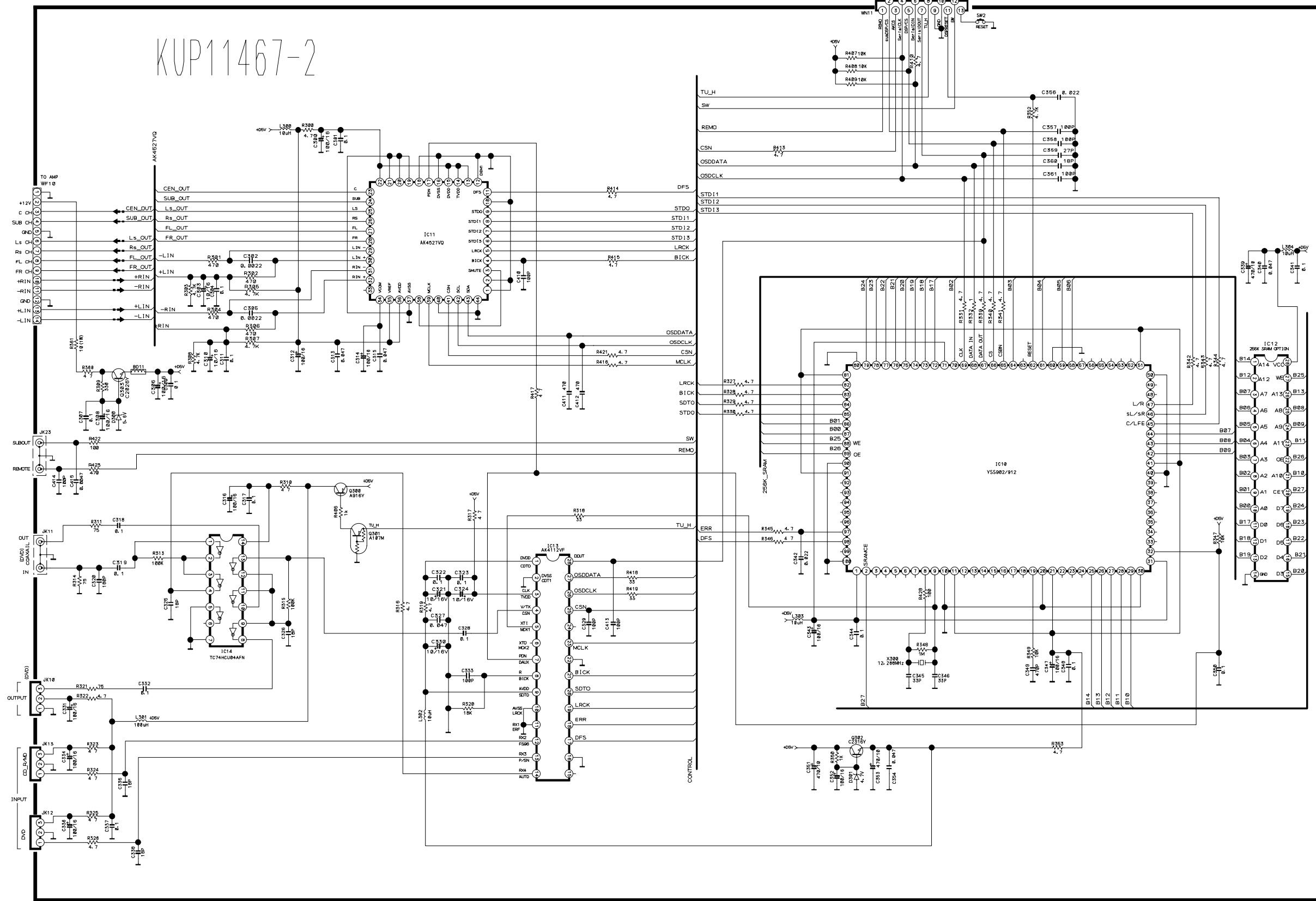
A

B

C

D

E



NOTES:

1. Resistor values are in ohms (k=kilo-ohms, M=Megohms).
2. Capacitor values are in microfarads (p=picofarads).
3. Δ Parts marked with this sign are safety critical components. They must always be replaced with identical components-refer to the appropriate parts list and ensure exact replacement.

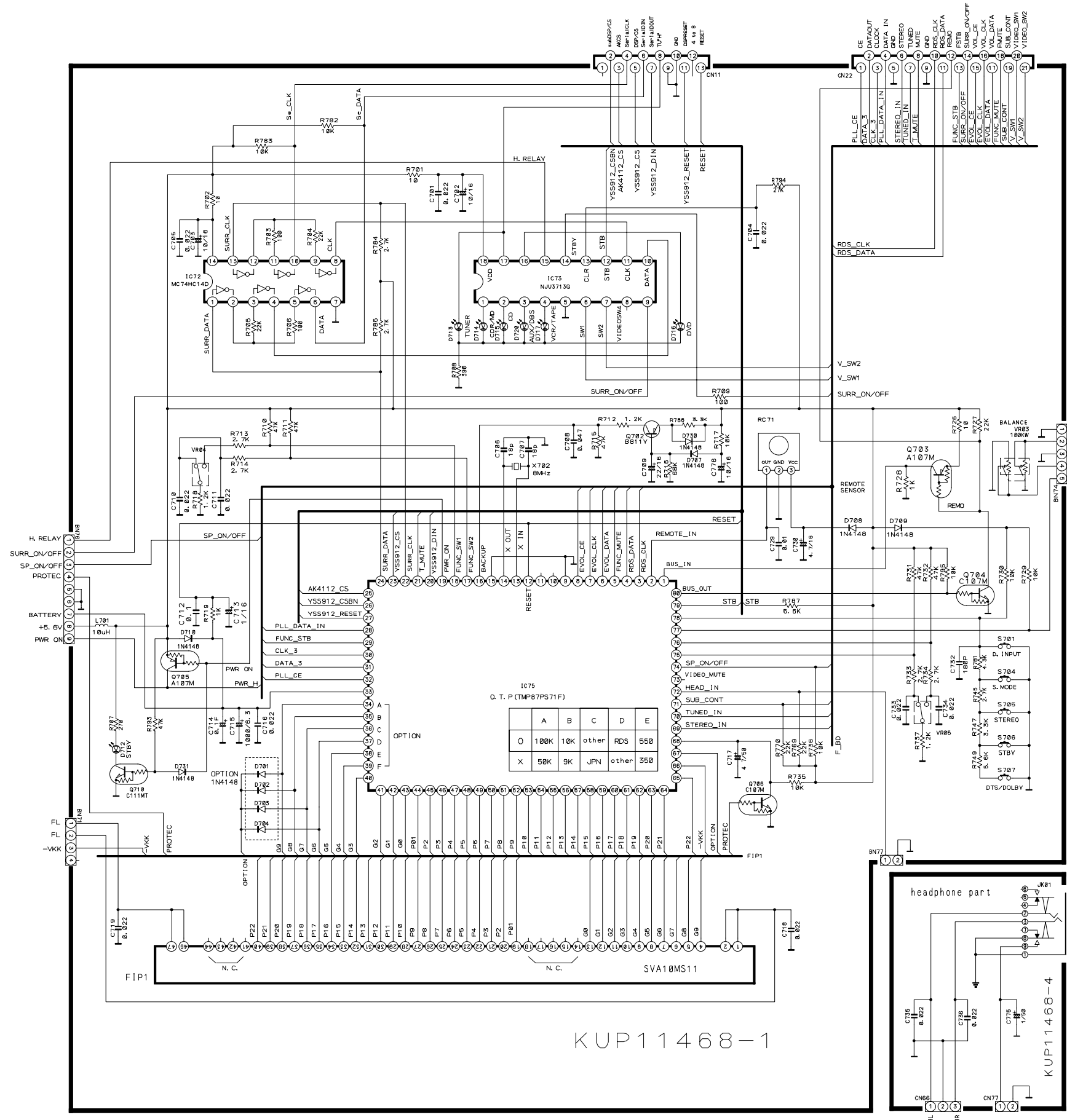
注意

1. 抵抗の単位は Ω (k=k Ω , M=M Ω)です。
2. コンデンサの単位は μF (p=pF)です。
3. Δ マークのある部品は安全規格重要部品です。交換するときは必ずティアック指定の部品を使用してください。

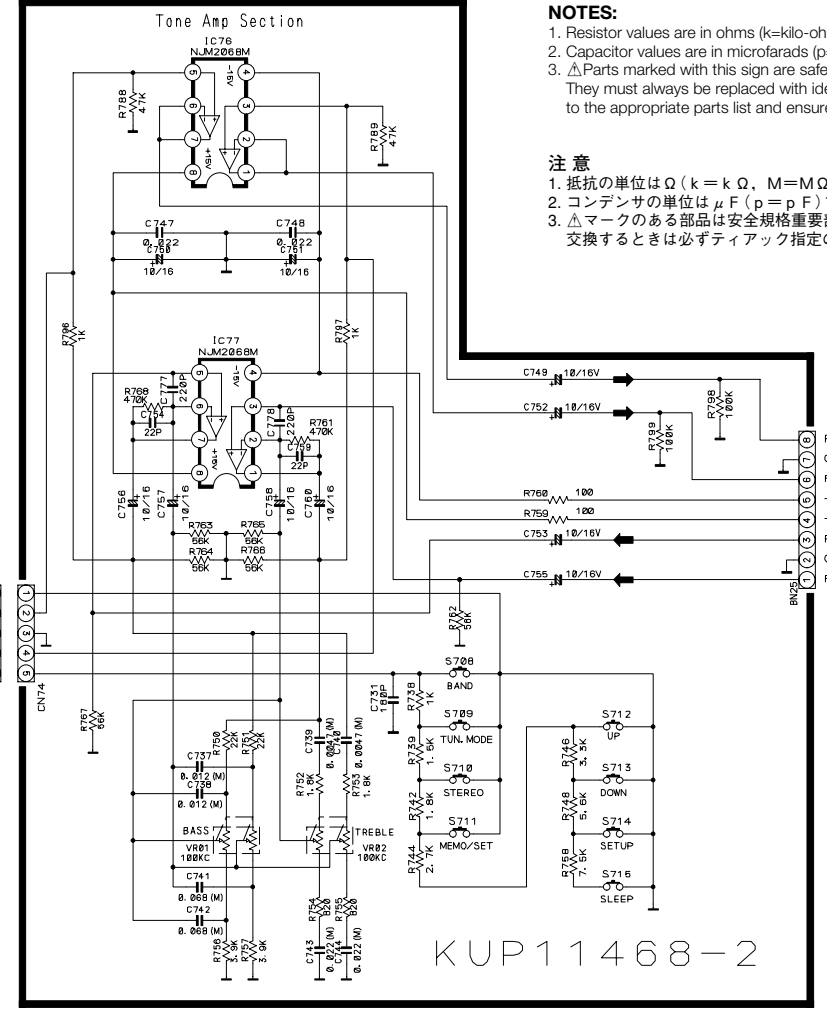
AG-H350

AV Digital Home Theater Receiver

A
B
C
D
E



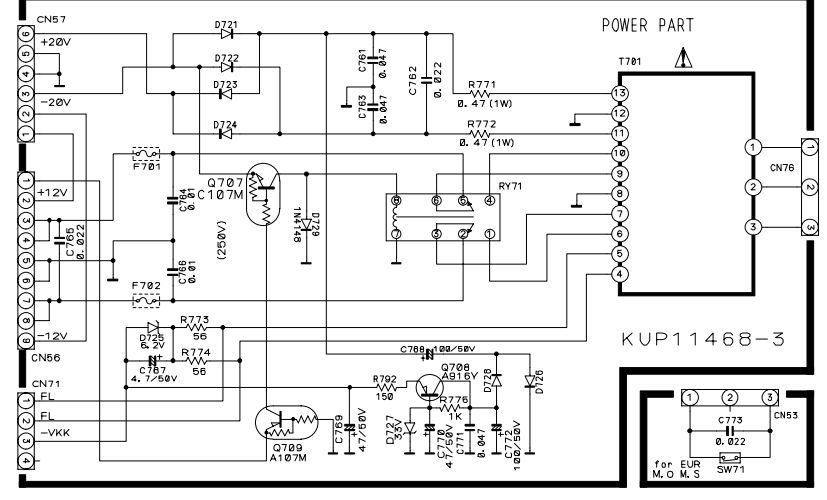
KUP11468-1



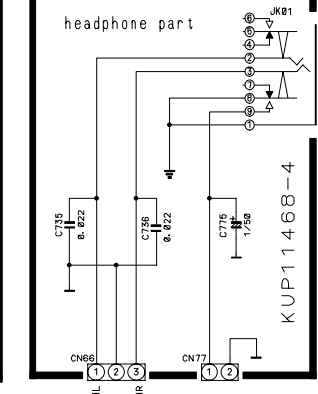
NOTES:
 1. Resistor values are in ohms (k=k Ω, M=M Ω).
 2. Capacitor values are in microfarads (p=picofarads).
 3. ΔParts marked with this sign are safety critical components. They must always be replaced with identical components-refer to the appropriate parts list and ensure exact replacement.

注意
 1. 抵抗の単位は Ω (k = k Ω, M = M Ω) です。
 2. コンデンサの単位は μF (p = pF) です。
 3. Δマークのある部品は安全規格重要部品です。交換するときは必ずティアック指定の部品を使用してください。

KUP11468-2



KUP11468-3



KUP11468-4

TEAC SCHEMATIC DIAGRAM AG-H350

1 2 3 4 5 6 7 8

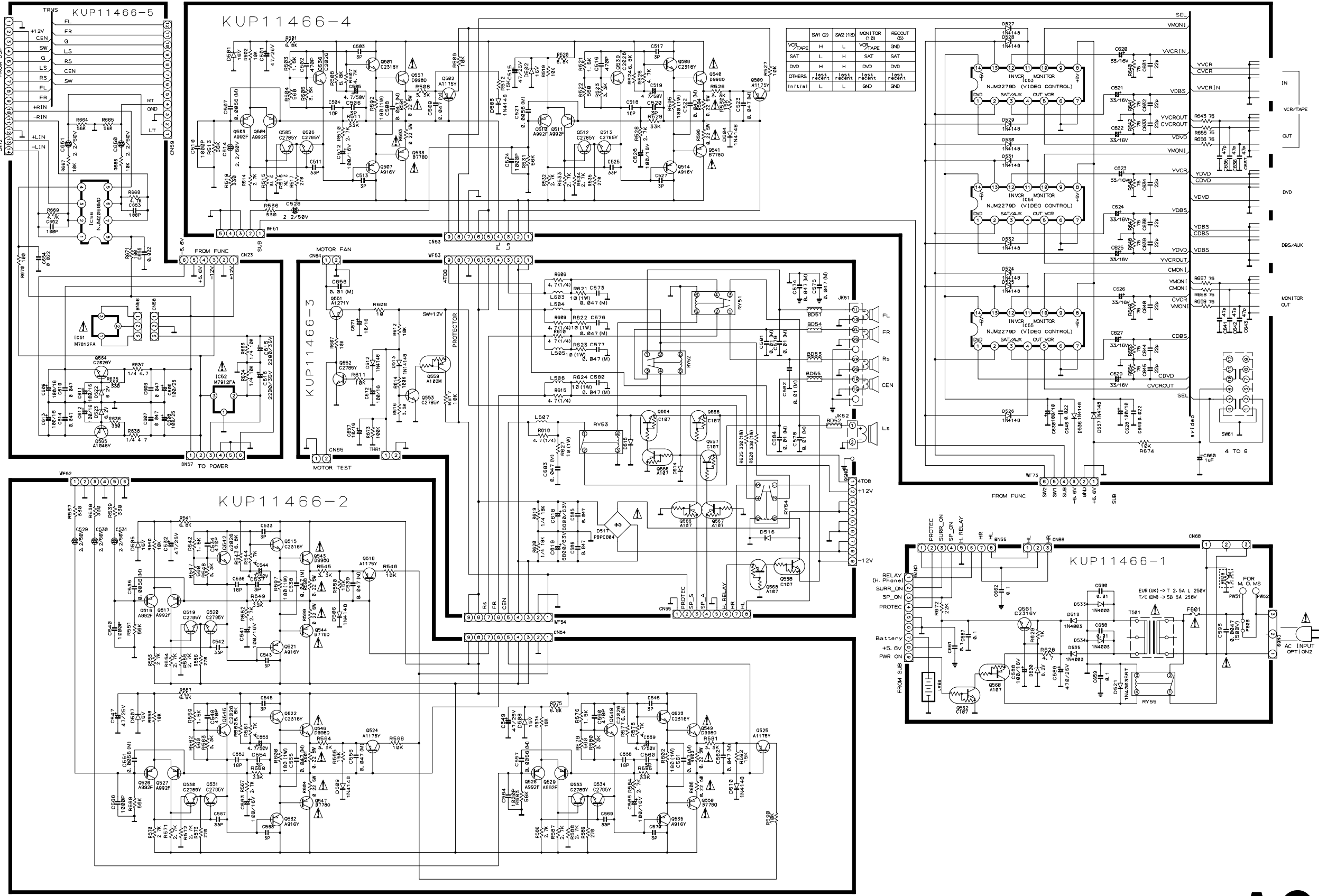
A

B

C

D

E



INSTRUCTIONS FOR SERVICE PERSONNEL
 BEFORE RETURNING APPLIANCE TO THE CUSTOMER, MAKE LEAKAGE-CURRENT OR RESISTANCE MEASUREMENTS TO DETERMINE THAT EXPOSED PARTS ARE ACCEPTABLY INSULATED FROM THE SUPPLY CIRCUIT.

NOTES:
 1. Resistor values are in ohms (k=kilo-ohms, M=megohms).
 2. Capacitor values are in microfarads (p=picofarads).
 3. △Parts marked with this sign are safety critical components. They must always be replaced with identical components-refer to the appropriate parts list and ensure exact replacement.

注意
 1. 抵抗の単位はΩ (k=kΩ, M=MΩ)です。
 2. コンデンサの単位はμF (p=pF)です。
 3. △マークのある部品は安全規格重要部品です。交換するときは必ずテック指定の部品を使用してください。

AG-H350

AV Digital Home Theater Receiver

1st Issue; January 2002