

TEAC



**Preliminary
暫定版**

SERVICE MANUAL

AG-L800

AV Digital Home Theater Receiver



CONTENTS

| | |
|---------------------------------------|----|
| 1 SPECIFICATIONS | 2 |
| 2 ADJUSTMENTS AND CHECKS | 3 |
| 3 EXPLODED VIEWS AND PARTS LIST | 6 |
| 4 PC BOARDS AND PARTS LIST | 8 |
| 5 INCLUDED ACCESSORIES | 13 |

NOTES

- PC boards shown are viewed from parts side.
- The parts with no reference number or no parts number in the exploded views are not supplied.
- As regards the resistors and capacitors, refer to the circuit diagrams contained in this manual.
- ⚠ Parts marked with this sign are safety critical components. They must be replaced with identical components - refer to the appropriate parts list and ensure exact replacement.
- Parts of [] mark can be used only with the version designated.
[US]:U.S.A. [C]:CANADA [E]:EUROPE [UK]:U.K.

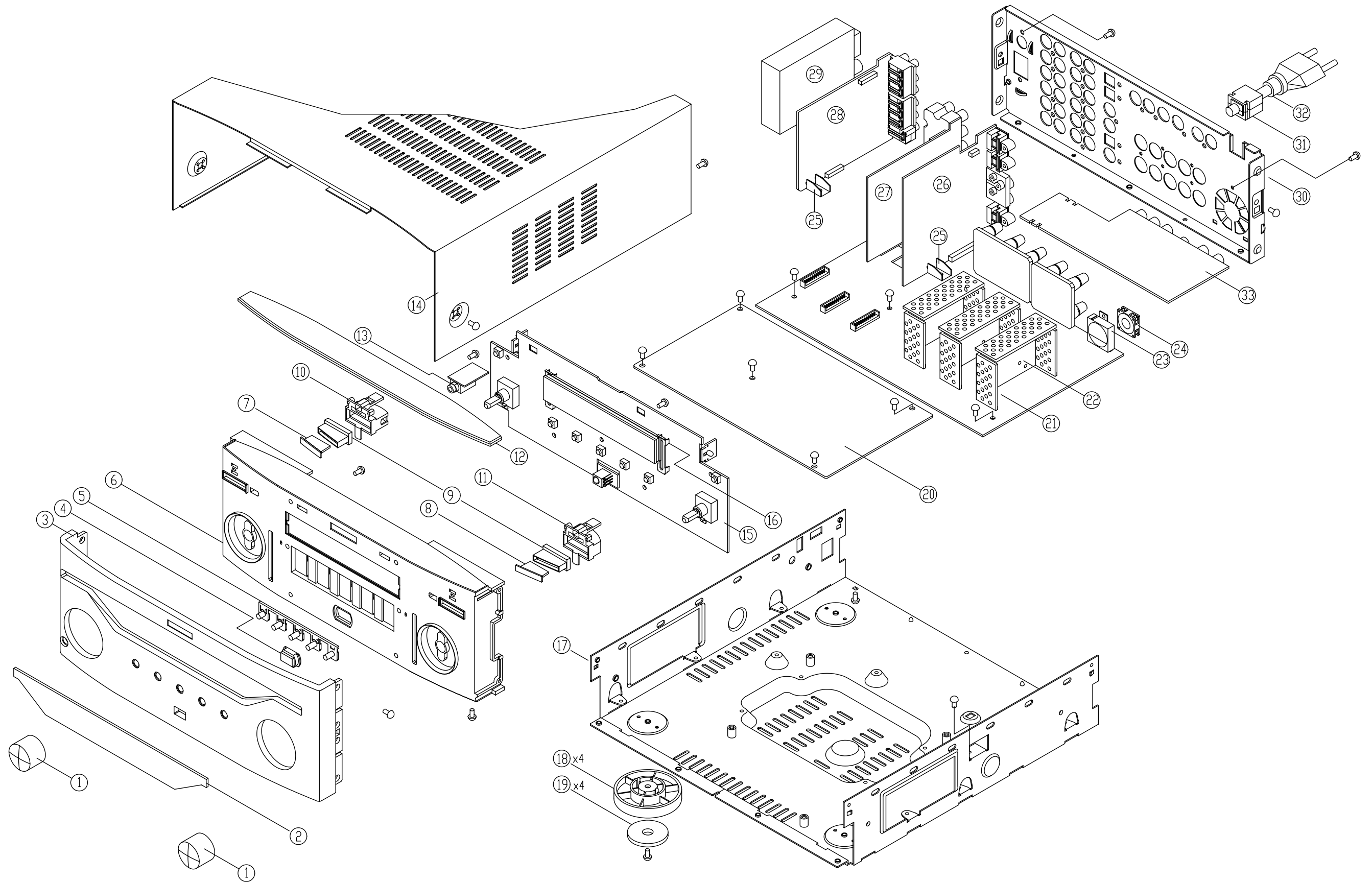
2 ADJUSTMENTS AND CHECKS

Preliminary
準備中

Preliminary
準備中

Preliminary
準備中

3 EXPLODED VIEWS AND PARTS LIST

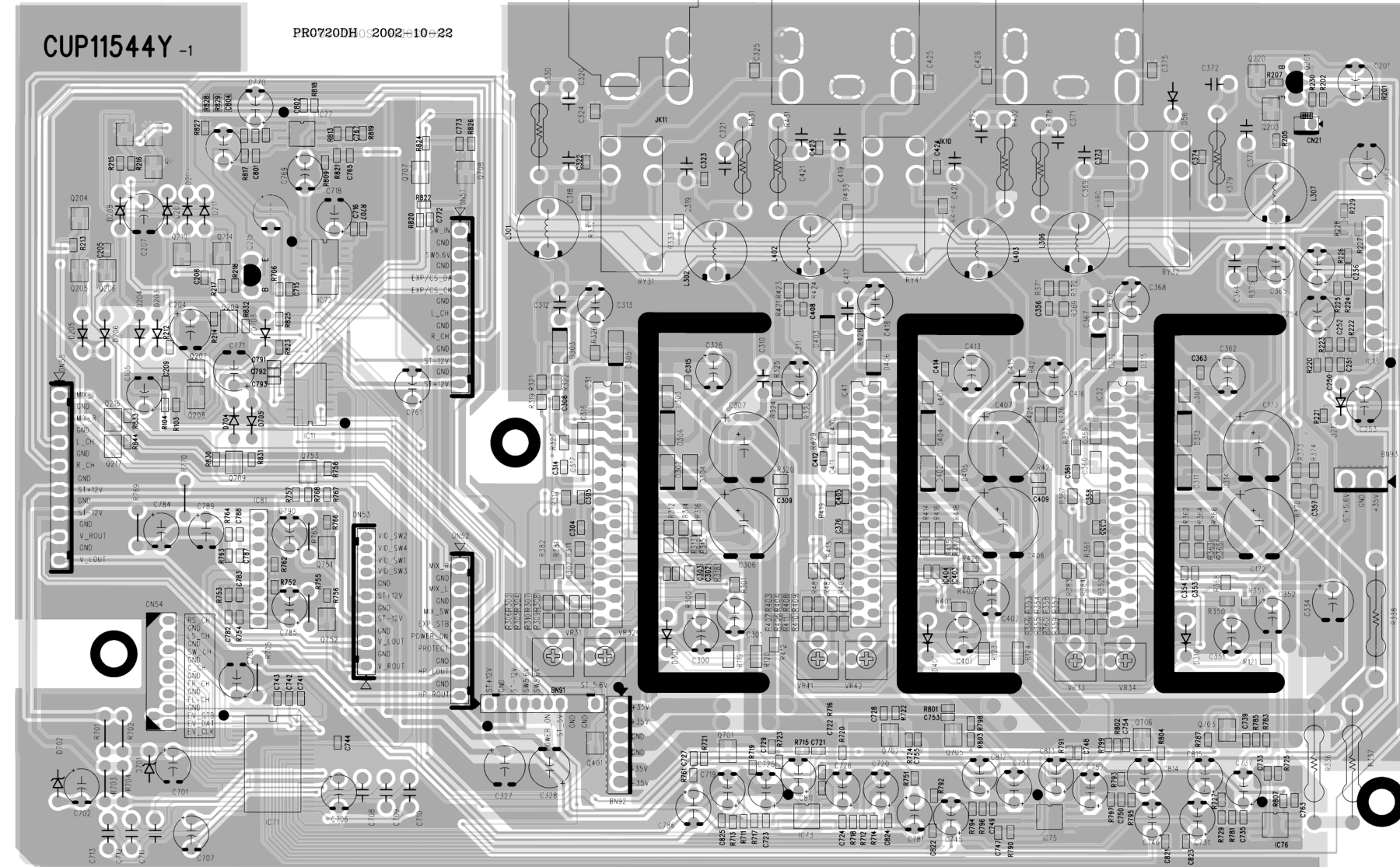


EXPLODED VIEW LIST

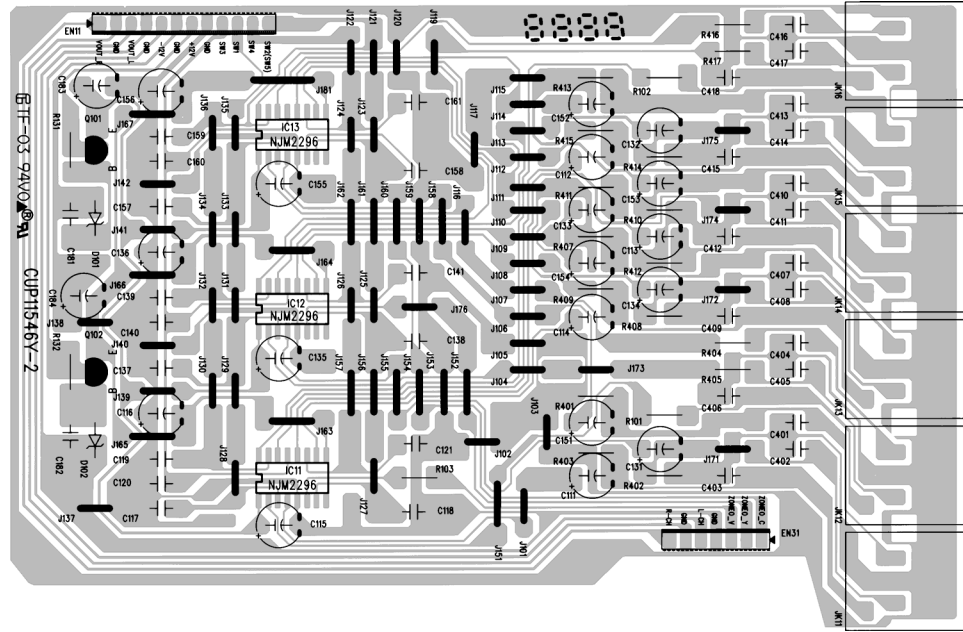
| REF. NO. | PARTS NO. | DESCRIPTION | REMARKS |
|----------|--------------|--------------------------|-----------------|
| 1 | 9A09605700 | VOLUME KNOB ASSY | KGK1A080ZA |
| 2 | 9A09605800 | WINDOW, FIP [US, C] | KGU1A285Y |
| | 9A09644900 | WINDOW, FIP [E, UK] | KGU1A285X |
| 3 | 9A09606410 | PANEL, FRONT [US, C] | KKM1A122YC35 |
| | 9A09606420 | PANEL, FRONT [E, UK] | KKM1A122ZC35 |
| 4 | 9A09594600 | WINDOW, SENSOR | CGU1A287A14K101 |
| 5 | 9A09594000 | KNOB, TACT | CBT1A834C22 |
| 6 | 9A09594700 | PANEL, SUB | CGW1A339R6K101 |
| 7 | 9A09594200 | KNOB, RDS (DIFFUSION) | CBT1A835RAZK101 |
| 8 | 9A09594100 | KNOB, DIMMER (DIFFUSION) | CBT1A835RAXK101 |
| 9 | 9A09594500 | KNOB, POWER (LIGHTING) | CBY1A026 |
| 10 | 9A09594400 | KNOB, POWER | CBY1A025RA |
| 11 | 9A09594300 | KNOB, RDS | CBY1A024RA |
| 12 | 9A09605910 | ORNAMENT, TOP [US, C] | KGU1A286Y |
| | 9A09605920 | ORNAMENT, TOP [E, UK] | KGU1A286Z |
| 13 | 9A09575710 | FRONT PCB ASSY [US, C] | COP11547C |
| | 9A09575720 | FRONT PCB ASSY [E, UK] | COP11547B |
| 14 | 9A09595300 | TOP CABINET | CKC2B130S35 |
| 15 | 9A09575710 | FRONT PCB ASSY [US, C] | COP11547C |
| | 9A09575720 | FRONT PCB ASSY [E, UK] | COP11547B |
| 16 | 9A08888700 | BRACKET, FLT | CMD1A209 |
| 17 | 9A09598900 | CHASSIS, BOTTOM | CUA2A215 |
| 18 | 9A09606300 | FOOT | KKL1A047M7G6 |
| 19 | 9A06229300 | CUSHION, FOOT | KHG1A039Z |
| 20 | 9A09596010 | SMPS PCB ASSY [US, C] | COP11548C |
| | 9A09596020 | SMPS PCB ASSY [E, UK] | COP11548B |
| 21 | 9A09575910 | AMP PCB ASSY | COP11544B |
| 22 | 9A09595800 | HEAT SINK | CMY1A196 |
| 23 | 9A09595600 | BRACKET, FAN | CMD1A471 |
| 24 | 9A09601800 | FAN, MOTOR | HDMF410T12L1C01 |
| 25 | 9A09559700 | BRACKET, PCB | CMD1A387 |
| 26 | 9A09576210 | DIGITAL PCB ASSY | COP11545B |
| 27 | 9A09576510 | I/O PCB ASSY | COP11546B |
| 28 | 9A09576510 | I/O PCB ASSY | COP11546B |
| 29 | 9A09560110 | TUNER MODULE [US, C] | CNVMB001MA08SL |
| | 9A09645000 | TUNER MODULE [E, UK] | CNVMB014MA1-8L |
| 30 | 9A09595410 | REAR PANEL [US, C] | CKF1A239Y |
| | 9A09595420 | REAR PANEL [E, UK] | CKF1A239Z |
| 31 | △ 9A06754900 | BUSHING, AC CORD | KHR1A028 |
| 32 | △ 9A07872600 | POWER CORD [US, C] | CJA523FBY |
| | △ 9A07916700 | POWER CORD [E] | CJA2B043Z |
| | △ 9A07916800 | POWER CORD [UK] | CJA2E045Z |
| 33 | 9A09576510 | I/O PCB ASSY | COP11546B |
| | 9A09600100 | CARD CABLE | CWC1B2A11A250B |
| | 9A09600200 | CARD CABLE | CWC1B2A19A320B |
| | 9A09564200 | CARD CABLE | CWC1C4A15B130B |
| | 9A08038100 | RING, FERRITE | KLZ9W001Z |

4 PC BOARDS AND PARTS LIST

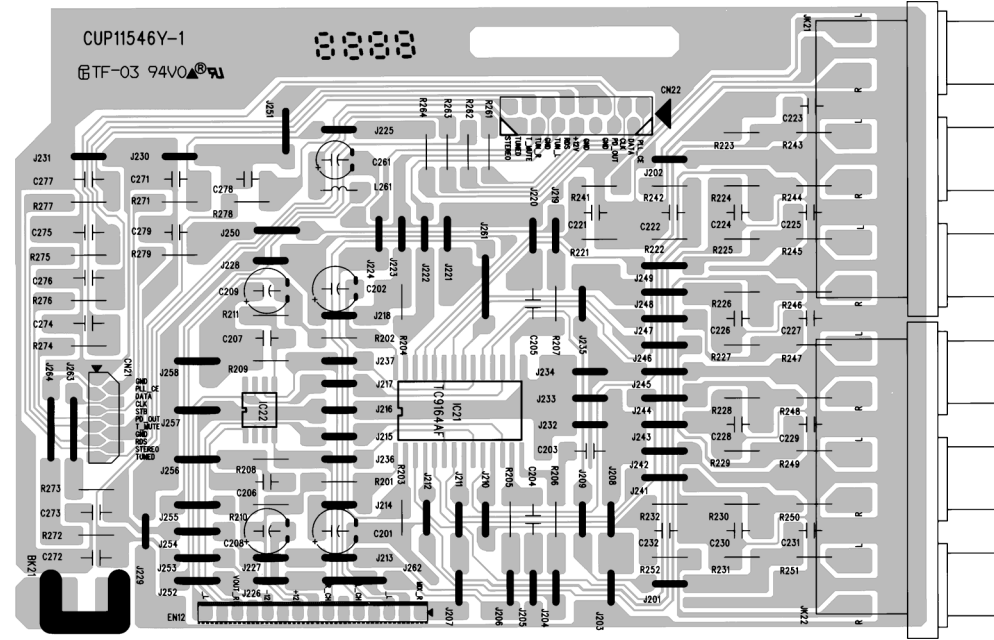
AMP PCB



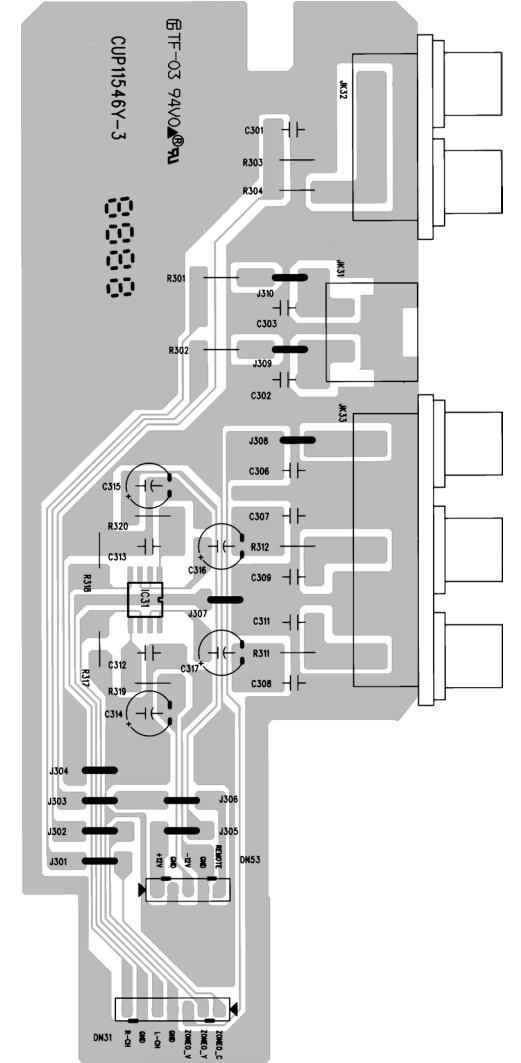
VIDEO PCB (I/O GATHER)



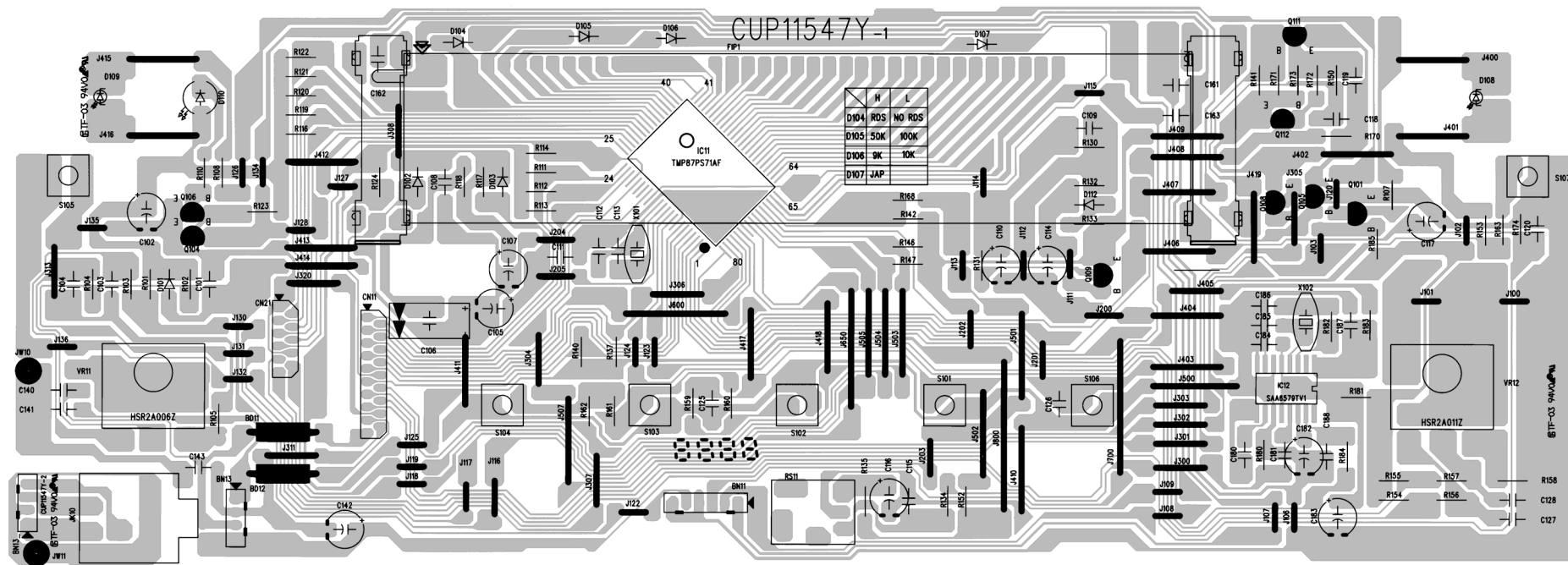
FUNCTION PCB (I/O GATHER)



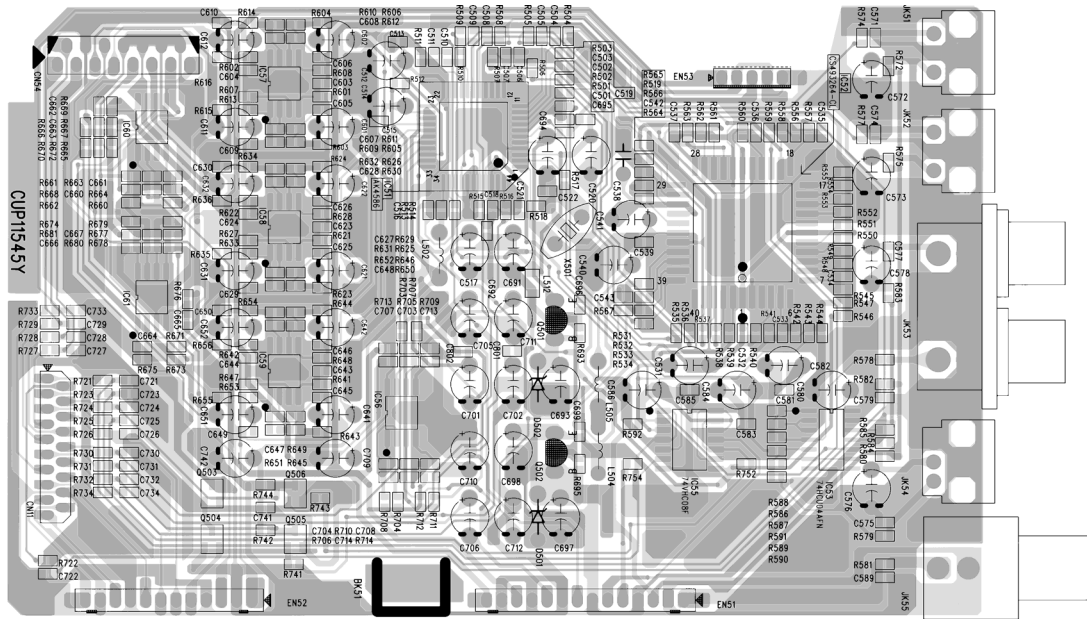
CONTROL PCB (I/O GATHER)



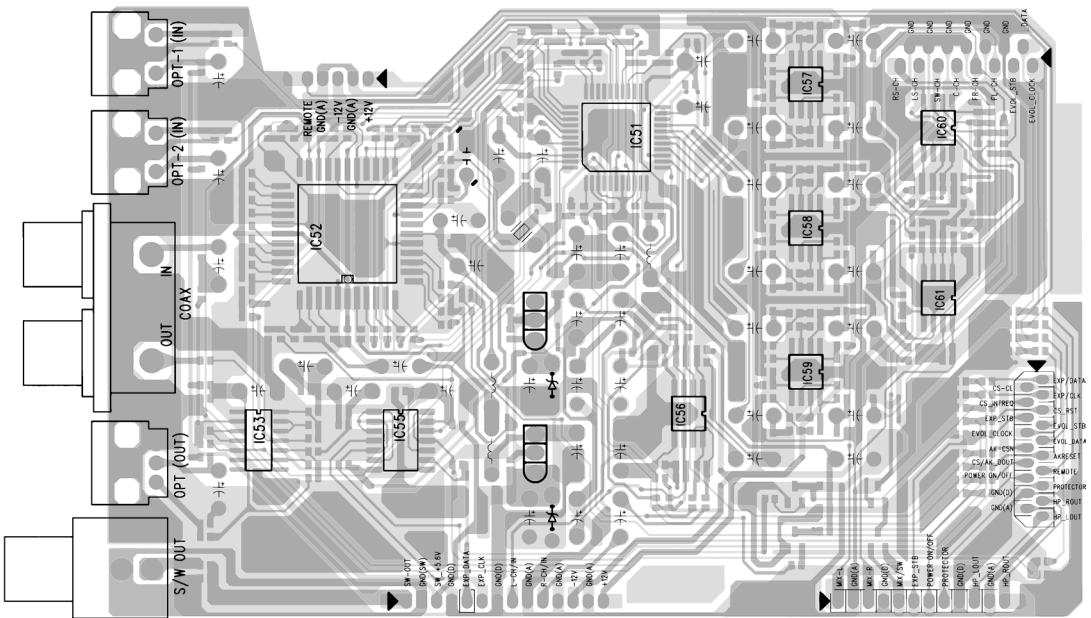
FRONT PCB



DIGITAL PCB (SIDE A)



DIGITAL PCB (SIDE B)



AMP PCB ASSY

| REF. NO. | PARTS NO. | DESCRIPTION |
|------------|--------------|--------------------------|
| | 9A09575910 | AMP PCB ASSY |
| | 9A09599000 | AMP PCB |
| | 9A09595600 | BRACKET, FAN |
| | 9A09601800 | FAN, MOTOR |
| BD93 | 9A05329100 | WAFER, MOLEX 5267-03A |
| CN21 | 9A08219500 | WAFER |
| CN54 | 9A08220000 | WAFER, CARD CABLE |
| D056 | 9A08878200 | DIODE, 1SS133T-77 |
| D204-D209 | 9A08878200 | DIODE, 1SS133T-77 |
| D211, D212 | 9A08878200 | DIODE, 1SS133T-77 |
| D301 | 9A08878200 | DIODE, 1SS133T-77 |
| D302-D306 | 9A09603600 | DIODE, SCHOTTKEY BARRIER |
| D310 | 9A08878200 | DIODE, 1SS133T-77 |
| D311-D315 | 9A09603600 | DIODE, SCHOTTKEY BARRIER |
| D401 | 9A08878200 | DIODE, 1SS133T-77 |
| D402-D406 | 9A09603600 | DIODE, SCHOTTKEY BARRIER |
| D701, D702 | 9A07903000 | DIODE, ZENER MTZJ7.5A |
| D703-D705 | 9A08878200 | DIODE, 1SS133T-77 |
| DN51 | 9A08036800 | WAFER, MOLEX 35336-1410 |
| DN52, DN53 | 9A09279300 | WAFER |
| DN55 | 9A09606100 | WAFER |
| IC11 | 9A09604100 | IC, NJU3713G |
| IC13 | 9A09604300 | IC, TA7317P |
| IC14 | △ 9A08218600 | IC, MC7805C |
| IC31, IC32 | 9A09595800 | HEAT SINK |
| IC31, IC32 | 9A09604200 | IC, TA2022-100 |
| IC41 | 9A09595800 | HEAT SINK |
| IC41 | 9A09604200 | IC, TA2022-100 |
| IC71 | 9A09604000 | IC, M62446AFP |
| IC72 | 9A09604500 | IC, TC9215AF |
| IC73 | 9A08163400 | IC, NJM2068MD |
| IC75-IC77 | 9A08163400 | IC, NJM2068MD |
| IC81 | 9A08163500 | IC, NJM4556AL |
| JK10 | 9A09595200 | TERMINAL, SP (RRRR/BBBB) |
| JK11 | 9A09595100 | TERMINAL, SP (R/B) |
| L301, L302 | 9A09595500 | COIL, SPEAKER |
| L303, L305 | 9A09602100 | COIL, CHIP 100UH K |
| L306, L307 | 9A09595500 | COIL, SPEAKER |
| L401 | 9A09602100 | COIL, CHIP 100UH K |
| L402, L403 | 9A09595500 | COIL, SPEAKER |
| Q201 | 9A07888100 | TR, KTA1266YT |
| Q203 | 9A09604800 | TR, CHIP KRA102S |
| Q204 | 9A09605000 | TR, CHIP KRC102S |
| Q205, Q206 | 9A09604800 | TR, CHIP KRA102S |
| Q207, Q208 | 9A09605000 | TR, CHIP KRC102S |
| Q209, Q210 | 9A09604800 | TR, CHIP KRA102S |
| Q211 | 9A09605000 | TR, CHIP KRC102S |
| Q212 | 9A09605100 | TR, CHIP KRC114S |
| Q213 | 9A09604800 | TR, CHIP KRA102S |
| Q214 | 9A09605000 | TR, CHIP KRC102S |

AMP PCB ASSY

| REF. NO. | PARTS NO. | DESCRIPTION |
|------------|--------------|----------------------------|
| Q215 | 9A07887900 | TR, KSB811YT |
| Q216, Q217 | 9A09605200 | TR, CHIP KTD1304T |
| Q220 | 9A09605000 | TR, CHIP KRC102S |
| Q401 | 9A09605100 | TR, CHIP KRC114S |
| Q701-Q703 | 9A09605200 | TR, CHIP KTD1304T |
| Q705-Q708 | 9A09605200 | TR, CHIP KTD1304T |
| Q709 | 9A09604800 | TR, CHIP KRA102S |
| Q751, Q752 | 9A09605200 | TR, CHIP KTD1304T |
| Q753 | 9A09604800 | TR, CHIP KRA102S |
| R119-R121 | 9A09602000 | BEAD, FERRITE (CHIP) |
| R123, R124 | 9A09602000 | BEAD, FERRITE (CHIP) |
| R330, R331 | △ 9A09606700 | R, METAL OXIDE FILM 2W 6.8 |
| R336-R338 | △ 9A09606600 | R, METAL OXIDE FILM 2W 27 |
| R378, R379 | △ 9A09606700 | R, METAL OXIDE FILM 2W 6.8 |
| R431, R432 | △ 9A09606700 | R, METAL OXIDE FILM 2W 6.8 |
| RY31, RY32 | 9A09058500 | RELAY |
| RY41 | 9A09058500 | RELAY |
| VR31-VR34 | 9A09604600 | VR, SEMI FIXED 47K OHM |
| VR41, VR42 | 9A09604600 | VR, SEMI FIXED 47K OHM |

I/O PCB ASSY (GATHER)

| REF. NO. | PARTS NO. | DESCRIPTION |
|------------|--------------|-----------------------------|
| | 9A09576510 | I/O PCB ASSY |
| | 9A09599200 | I/O PCB |
| BK21 | 9A09559700 | BRACKET, PCB |
| CN21 | 9A09606000 | WAFER, CARD CABLE |
| CN22 | 9A08220000 | WAFER, CARD CABLE |
| D101, D102 | 9A08951100 | DIODE, ZENER MTZJ6.8BT |
| DN31 | 9A07889900 | WAFER, MOLEX 35336-0710 |
| DN53 | 9A09289800 | WAFER |
| EN11 | 9A09279400 | CONNECTOR |
| EN12 | 9A09606200 | WAFER |
| EN31 | 9A07890000 | CONNECTOR, MOLEX 35237-0710 |
| IC11-IC13 | 9A08945500 | IC, NJM2296M |
| IC21 | 9A09340400 | IC, TC9164AF |
| IC22 | 9A08163400 | IC, NJM2068MD |
| IC31 | 9A08163400 | IC, NJM2068MD |
| JK11-JK16 | 9A09278800 | JACK, S-VIDEO+VHS |
| JK21, JK22 | 9A09289400 | JACK, BOARD |
| JK31 | 9A09601900 | JACK, S-VIDEO 1P |
| JK32 | 9A09594900 | JACK, REMOTE 2P |
| JK33 | 9A09595000 | JACK, 3P |
| L261 | 9A07886600 | COIL, 10UH |
| Q101 | △ 9A07888000 | TR, KSC2316YT |
| Q102 | △ 9A09041500 | TR, KSA916YT |

FRONT PCB ASSY

| REF. NO. | PARTS NO. | DESCRIPTION |
|------------|------------|----------------------------|
| | 9A09575710 | FRONT PCB ASSY [US, C] |
| | 9A09575720 | FRONT PCB ASSY [E, UK] |
| | 9A09599300 | FRONT PCB |
| | 9A08888700 | BRACKET, FLT |
| BD11, BD12 | 9A07050600 | BEAD, CORE |
| C106 | 9A09275000 | C, 0.1F GOLD |
| CN11 | 9A09606000 | WAFER, CARD CABLE |
| CN21 | 9A08789500 | WAFER, CARD CABLE |
| D101-D103 | 9A08878200 | DIODE, 1SS133T-77 |
| D104 | 9A08878200 | DIODE, 1SS133T-77 [E, UK] |
| D105 | 9A08878200 | DIODE, 1SS133T-77 |
| D106 | 9A08878200 | DIODE, 1SS133T-77 [E, UK] |
| D108, D109 | 9A09563300 | LED, BLUE |
| D110 | 9A09344400 | LED, YELLOW |
| D112 | 9A08878200 | DIODE, 1SS133T-77 |
| FIP1 | 9A08034600 | F. I. P, SVA-10MS11 |
| IC11 | 9A09603800 | IC, HVI ANAM1357AT (PRGMD) |
| IC12 | 9A08033400 | IC, SAA6579T/V1 [E, UK] |
| JK10 | 9A09567200 | JACK, HEADPHONE [E, UK] |
| L101 | 9A07886600 | COIL, 10UH |
| Q101 | 9A09599500 | TR, KRC102MT |
| Q104-Q106 | 9A09604900 | TR, KRC102MT |
| Q108 | 9A09604700 | TR, KRA102MT |
| Q109 | 9A07887900 | TR, KSB811YT |
| Q110, Q111 | 9A09604900 | TR, KRC102MT |
| Q112 | 9A09604700 | TR, KRA102MT |
| RS11 | 9A08563600 | SENSOR, REMOCON |
| S101-S107 | 9A07878500 | SW, TACT SKHV10910G |
| VR11 | 9A08890300 | VR, ENCODER [E, UK] |
| VR12 | 9A08162900 | VR, ENCODER [E, UK] |
| X101 | 9A08879000 | CRYSTAL |
| X102 | 9A09644800 | CRYSTAL [E, UK] |

DIGITAL PCB ASSY

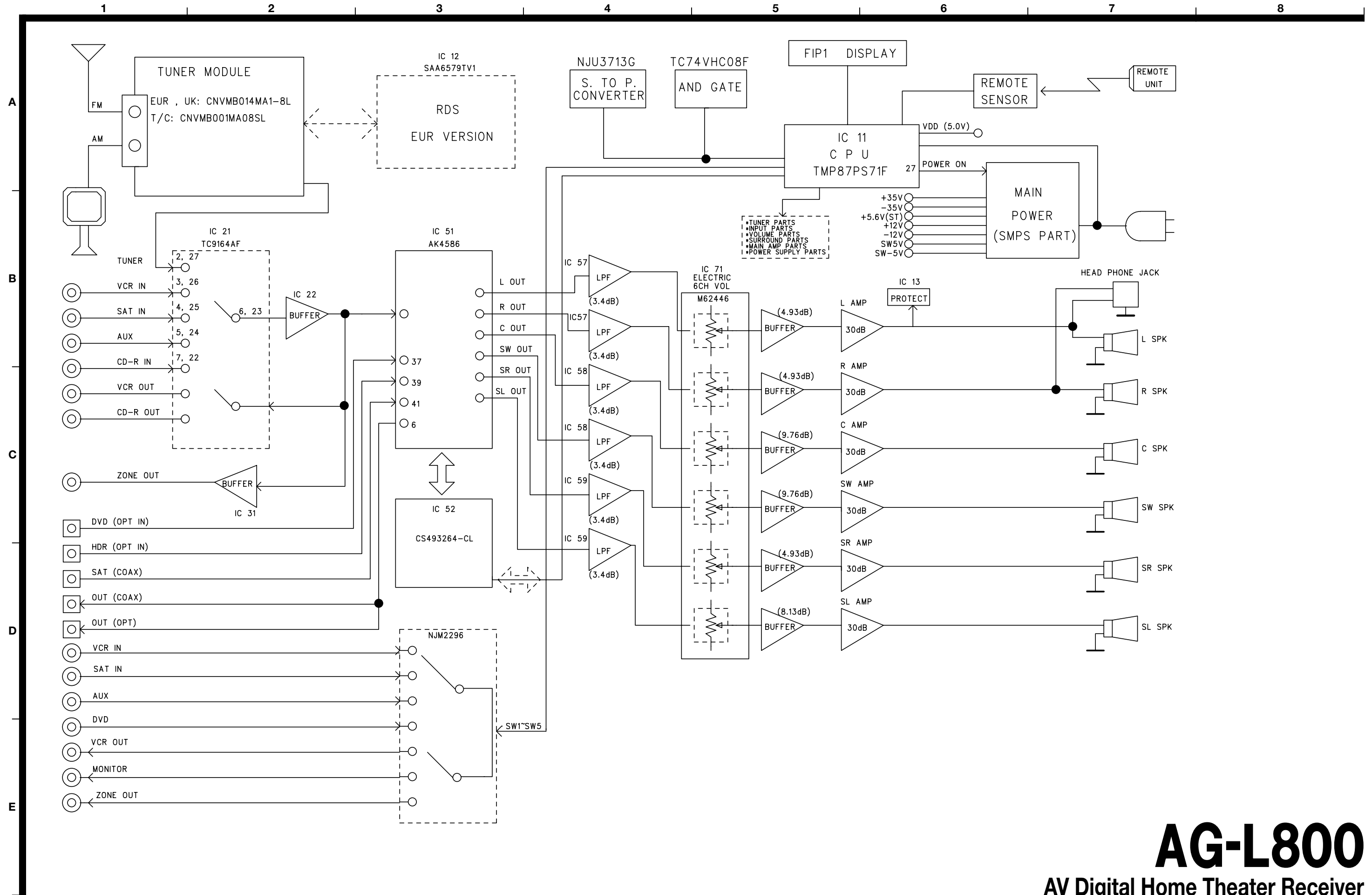
| REF. NO. | PARTS NO. | DESCRIPTION |
|------------|------------|-------------------------|
| | 9A09576210 | DIGITAL PCB ASSY |
| | 9A09599100 | DIGITAL PCB |
| BK51 | 9A09559700 | BRACKET, PCB |
| CN11 | 9A08789500 | WAFER, CARD CABLE |
| CN54 | 9A08220000 | WAFER, CARD CABLE |
| D501 | 9A09603400 | DIODE, ZENER MTZJ3. 3BT |
| D502 | 9A09603500 | DIODE, ZENER MTZJ4. 3CT |
| EN51 | 9A08036900 | WAFER, MOLEX 35237-1410 |
| EN52 | 9A09279400 | CONNECTOR |
| EN53 | 9A09289900 | CONNECTOR |
| IC51 | 9A09603700 | IC, AK4586VQ |
| IC52 | 9A09603900 | IC, CS493264-CL |
| IC53 | 9A08948000 | IC, TC74HCU04AFN |
| IC55 | 9A09604400 | IC, TC74VHC08F |
| IC56-IC61 | 9A08163400 | IC, NJM2068MD |
| JK51, JK52 | 9A08948300 | MODULE, OPTICAL (RX) |
| JK53 | 9A09278500 | JACK, BOARD |
| JK54 | 9A08126500 | MODULE, OPTICAL |
| JK55 | 9A09558800 | JACK, INPUT 1P (GOLD) |
| L502 | 9A07886600 | COIL, 10UH |
| L504, L505 | 9A07886600 | COIL, 10UH |
| L512 | 9A09602000 | BEAD, FERRITE (CHIP) |
| Q501, Q502 | 9A07888000 | TR, KSC2316YT |
| Q503 | 9A09605000 | TR, CHIP KRC102S |
| Q504 | 9A09604800 | TR, CHIP KRA102S |
| Q505, Q506 | 9A09605100 | TR, CHIP KRC114S |
| X501 | 9A08949000 | CRYSTAL |

5 INCLUDED ACCESSORIES

INCLUDED ACCESSORIES

| REF. NO. | PARTS NO. | DESCRIPTION | REMARKS |
|----------|------------|-----------------------------|---------------|
| | 9A09478100 | OWNER'S MANUAL, EFS [US, C] | CQX1A809Z |
| | 9A09478202 | OWNER'S MANUAL, EGF [E, UK] | CQX1A814Z |
| | 9A09478301 | OWNER'S MANUAL, ISN [E] | CQX1A818Z |
| | 9A09596900 | MANUAL, CD ROM | CQX1A817Z |
| | 9A09596800 | MANUAL, REMOCON | CQX1A816Z |
| | 9A09645100 | MANUAL, REMOCON [E, UK] | CQX1A815Z |
| | 9A09600410 | REMOTE CONTROL UNIT [US, C] | HARTAGL800T/C |
| | 9A09600420 | REMOTE CONTROL UNIT [E, UK] | HARTAGL800EUR |
| | 9A09600300 | BATTERY | HABAAAM1.5VAK |
| | 9A09562000 | FM 1 POLE ANT [US, C] | CSA1A019Z |
| | 9A09572700 | FM 1 POLE ANT [E, UK] | CSA1A018Z |
| | 9A09562100 | AM LOOP ANT | CSA1A020Z |

TEAC BLOCK DIAGRAM AG-L800

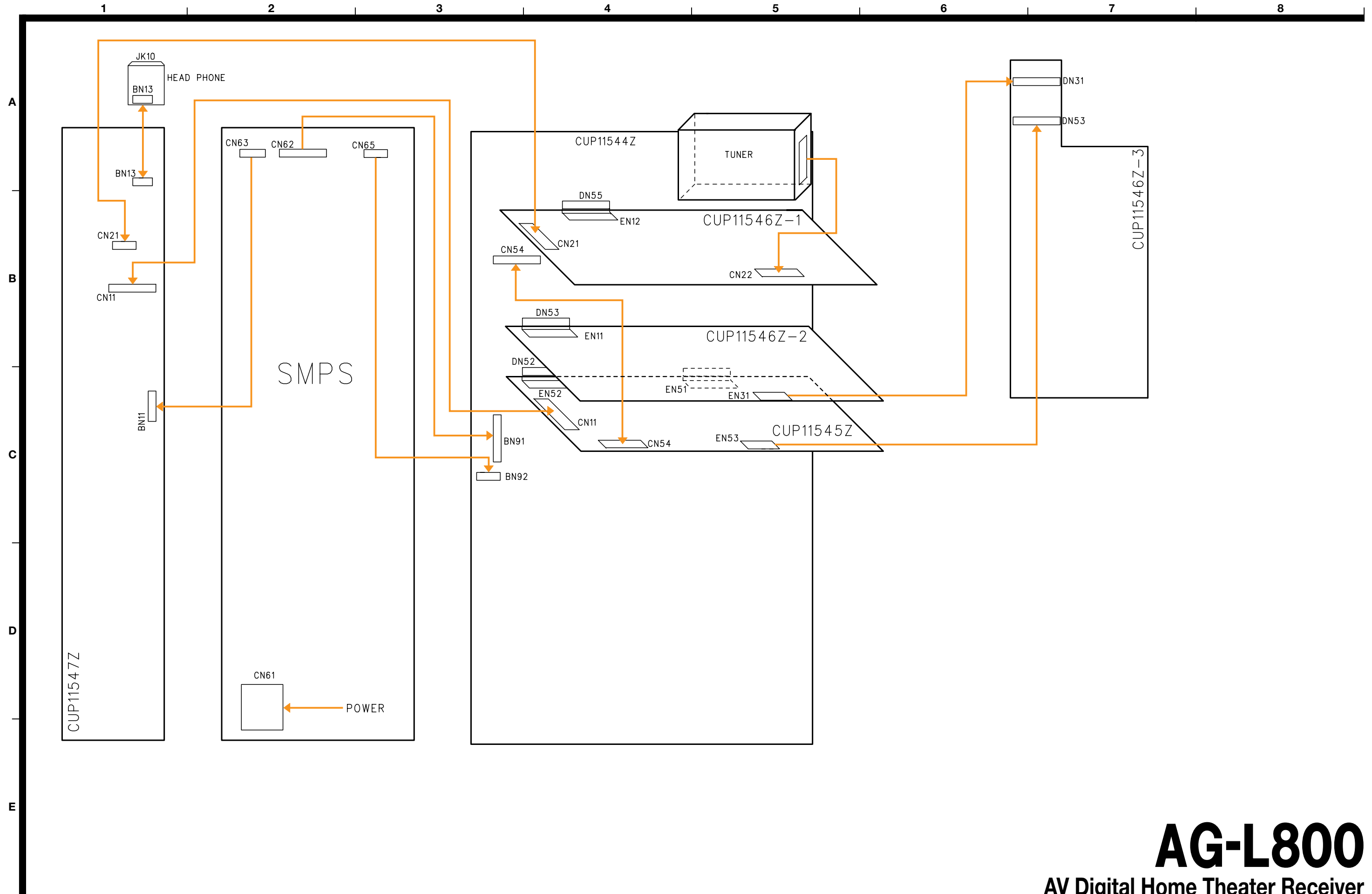


AG-L800

AV Digital Home Theater Receiver

1st Issue; November 2002

TEAC WIRING DIAGRAM AG-L800



TEAC SCHEMATIC DIAGRAM AG-L800 VIDEO PCB, FUNCTION PCB, CONTROL PCB

1 2 3 4 5 6 7 8

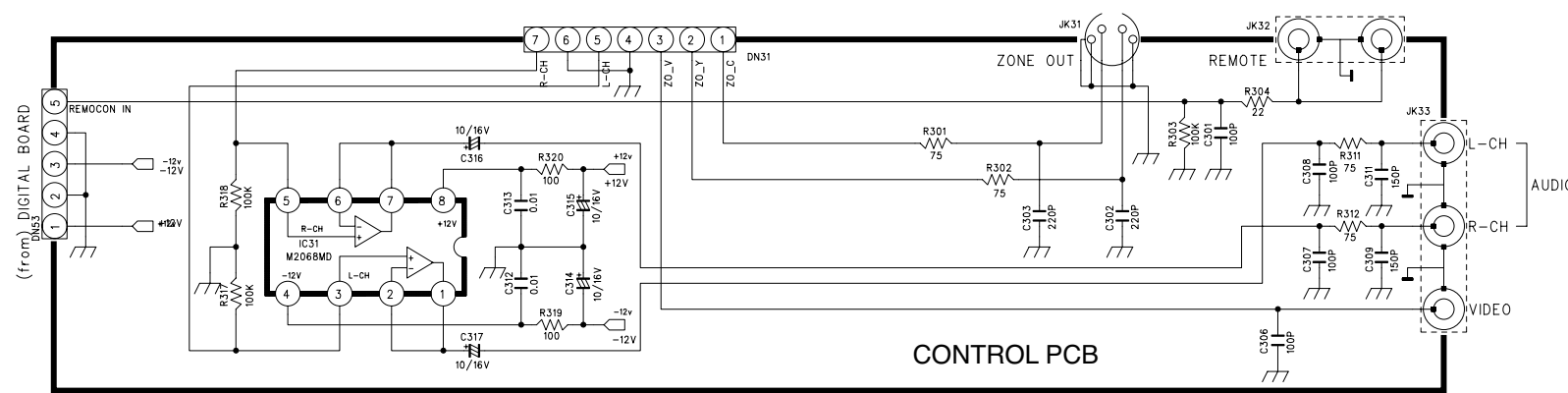
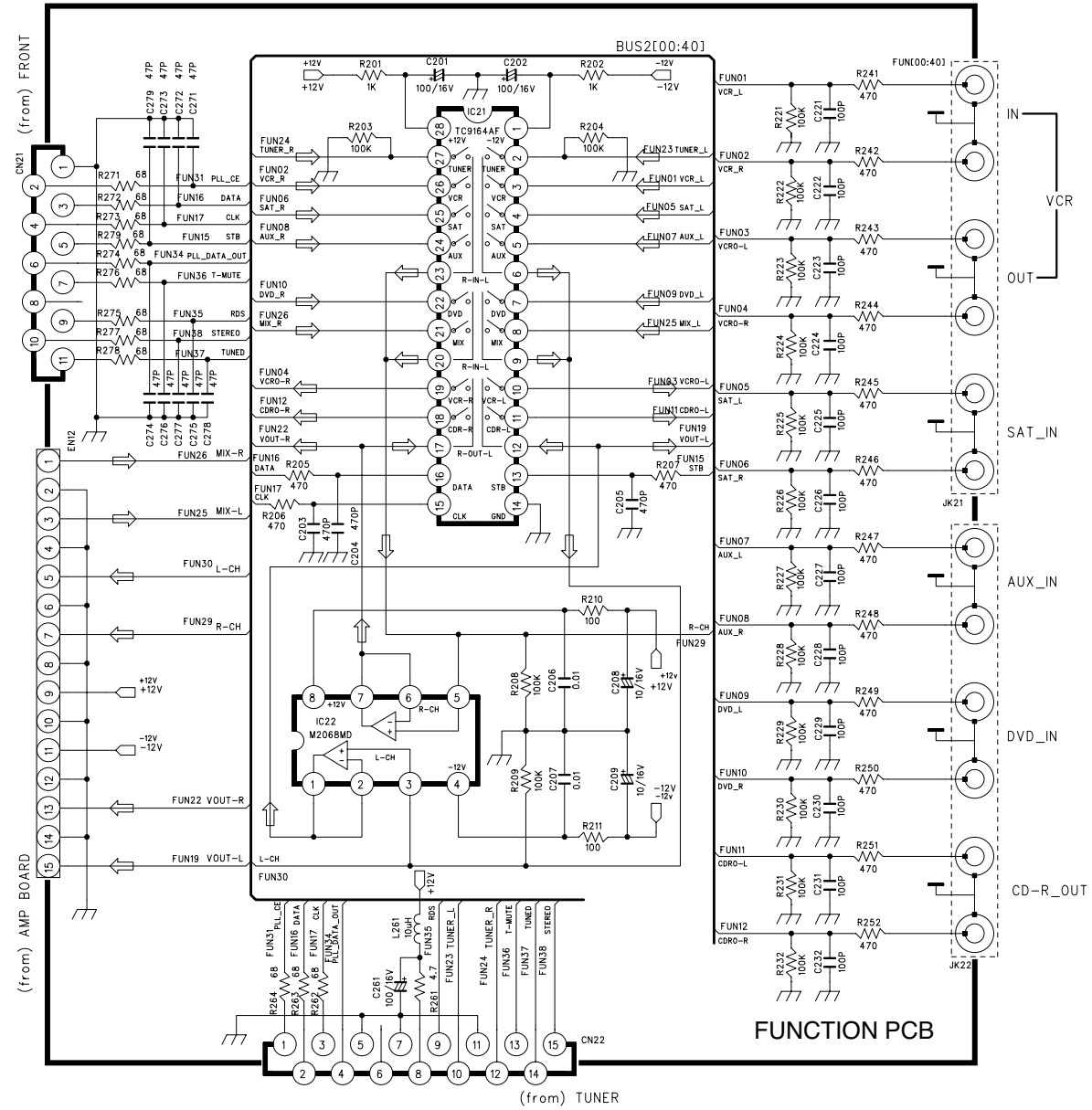
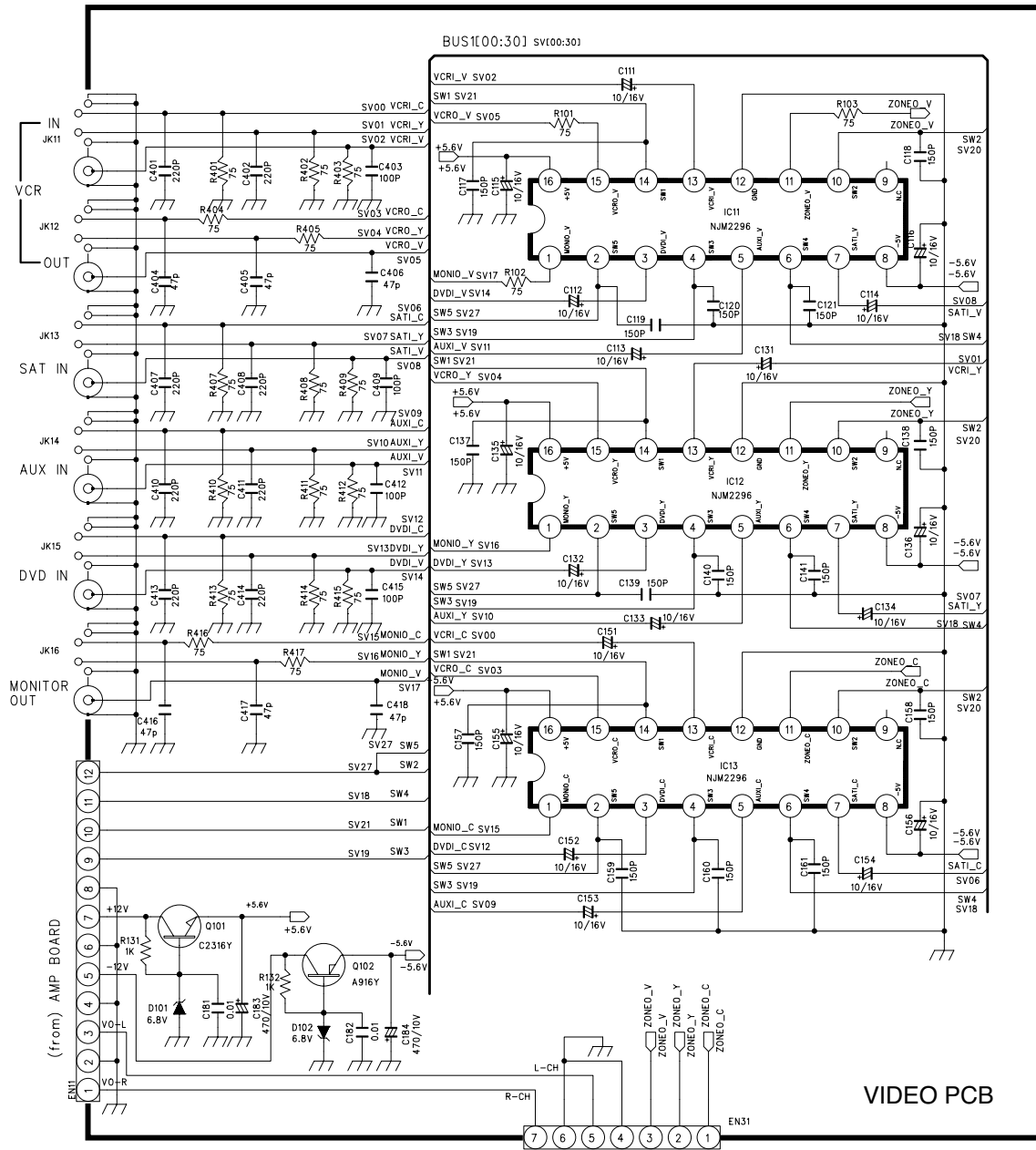
A

B

C

D

E



AG-L800

AV Digital Home Theater Receiver

1st Issue; November 2002

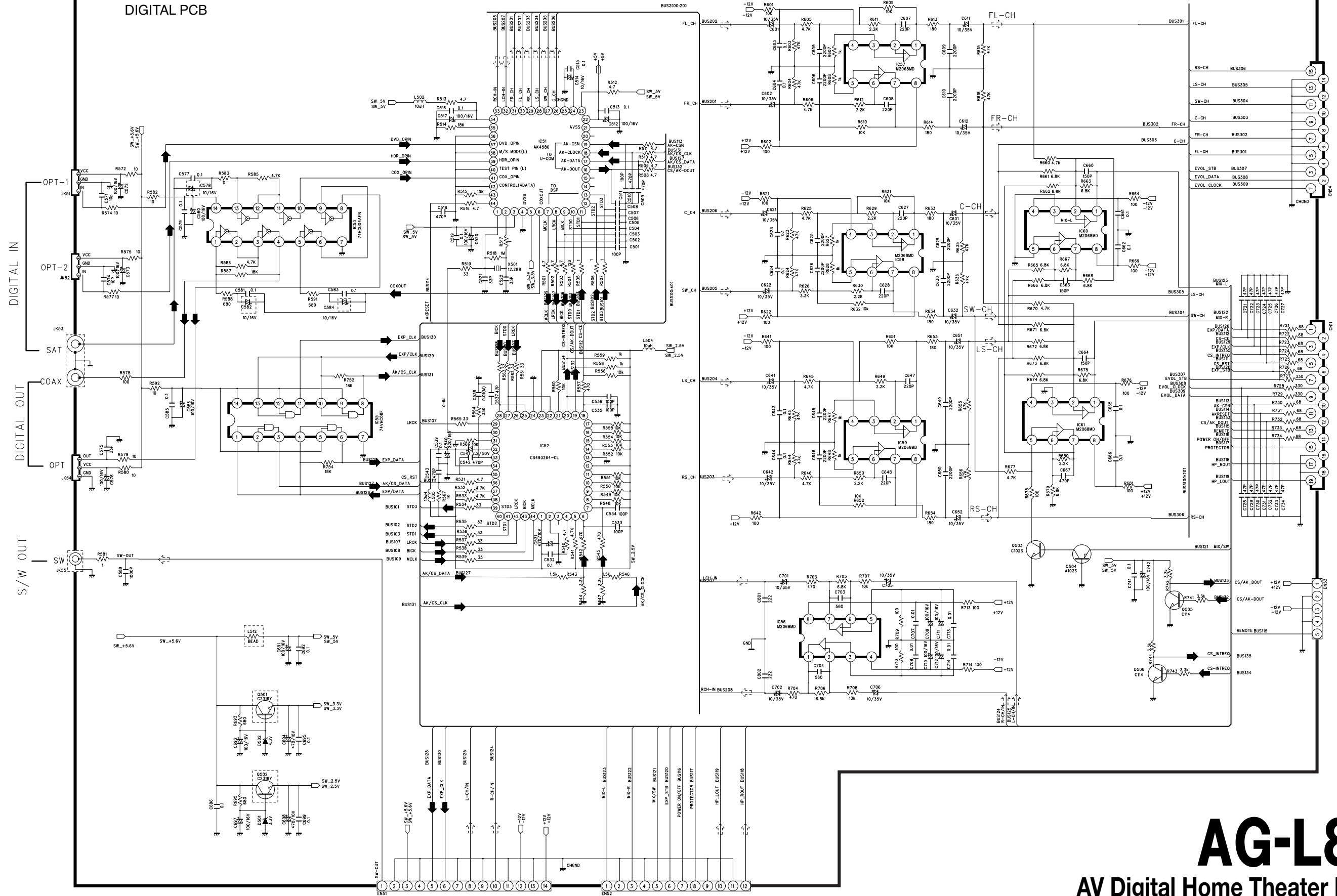
A

B

C

D

E



TEAC SCHEMATIC DIAGRAM AG-L800 AMP PCB

1 2 3 4 5 6 7 8

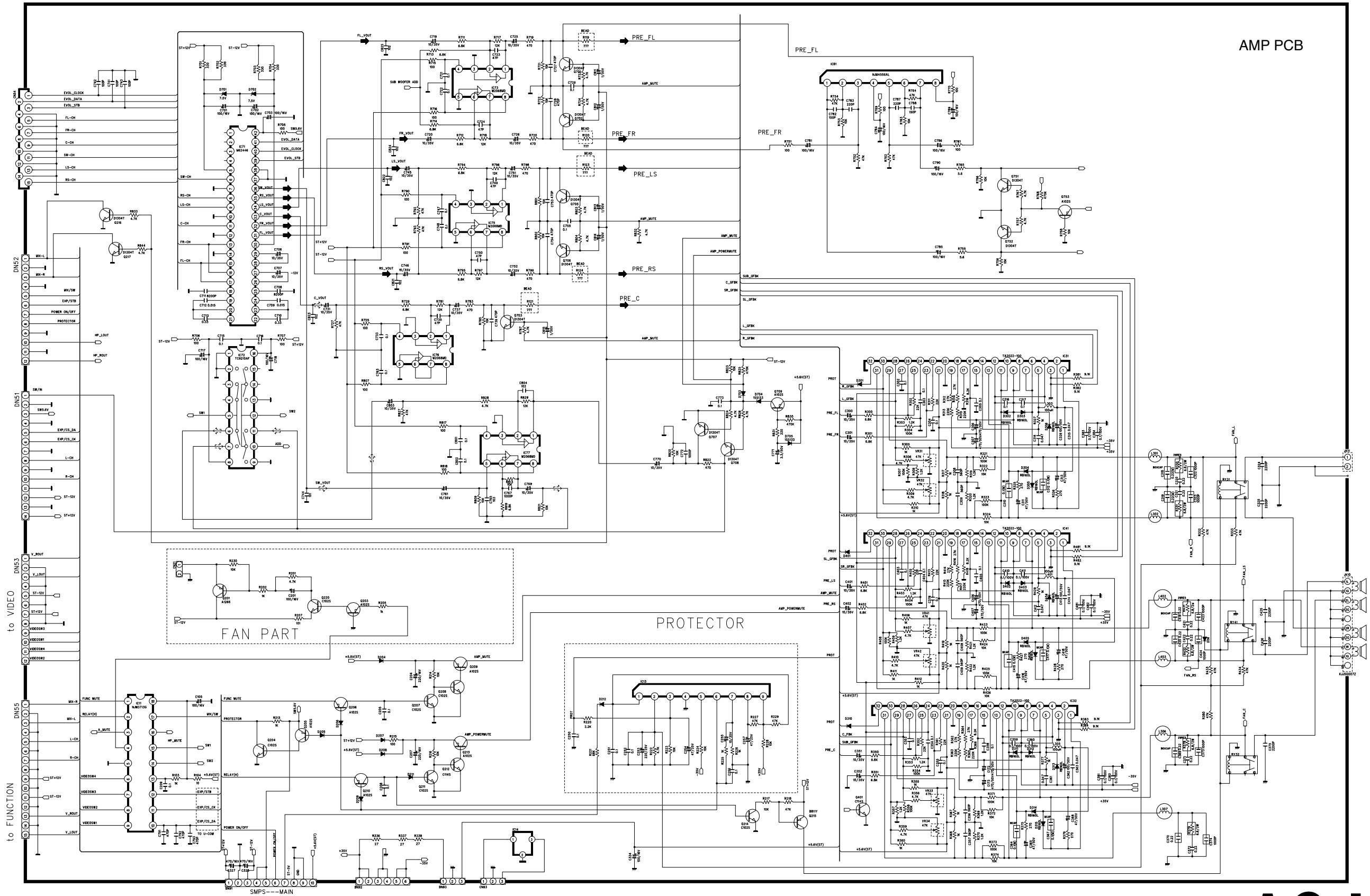
A

B

C

D

E



AMP PCB

AG-L800

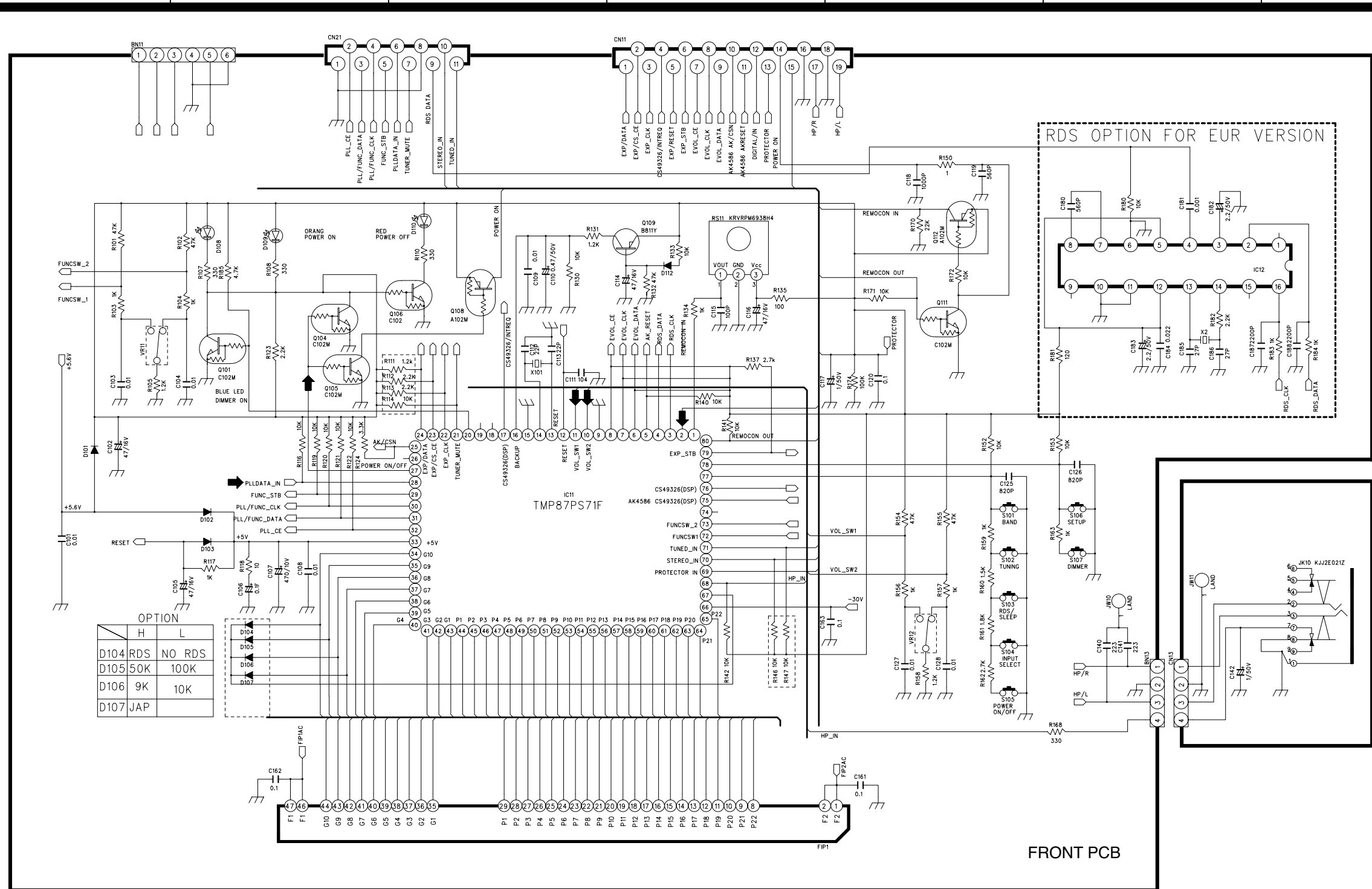
AV Digital Home Theater Receiver

1st Issue; November 2002

TEAC SCHEMATIC DIAGRAM AG-L800 FRONT PCB

1 2 3 4 5 6 7 8

A
B
C
D
E



FRONT PCB

