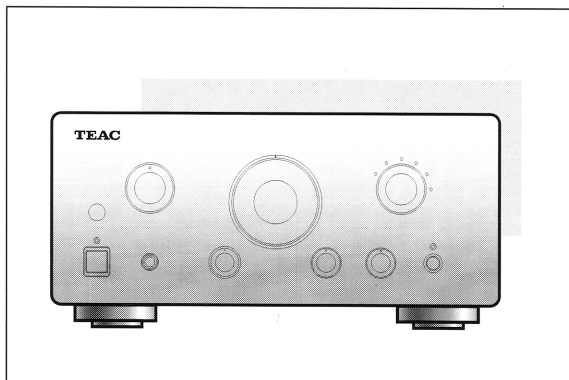


TEAC

D00337700A




SERVICE MANUAL

A-H500

Integrated Stereo Amplifier

NOTES

- PC boards shown are viewed from parts side.
- The parts with no reference number or no parts number in the exploded views are not supplied.
- As regards the resistors and capacitors, refer to the circuit diagrams contained in this manual.
-  Parts marked with this sign are safety critical components. They must be replaced with identical components- refer to the appropriate parts list and ensure exact replacement.
- Parts of [] mark can be used only with the version designated.
[DM]: JAPAN [E]: EUROPE

CONTENTS

| | |
|--|----|
| SPECIFICATIONS | 2 |
| IC Function (μ -com BVIANAM1187A) | 3 |
| BIAS CURRENT ADJUSTMENT | 4 |
| WIRING DIAGRAM | 5 |
| BLOCK DIAGRAM | 7 |
| SCHEMATIC DIAGRAM | 9 |
| PRINTED CIRCUIT BOARDS | 17 |
| EXPLODED VIEW | 21 |
| ELECTRICAL PARTS LIST | 24 |

Specifications

| | | | |
|---------------------------------|---|--------------------------------------|---|
| Power output | : 50W + 50W (80 Ω , 1KHz, 0.1%) | Frequency response | : 5Hz to 80KHz |
| Total harmonic distortion | : 0.03% (45W, 1KHz, 8 Ω) | Tone control | |
| S/N Ratio (Input Short) | | Bass | : ± 10 dB (100Hz) |
| Phono | : 67dB (IHF-A) | Treble | : ± 10 dB (10KHz) |
| CD, Tuner, Aux, Tape | : 95dB (IHF-A) | Required speaker impedance | |
| CD direct | : 100dB (IHF-A) | | : 4 Ω to 6 Ω |
| Input Sensitivity/ Impedance | | Power consumption | : 120W [DM] : 360W [EUR] |
| Phono(MM) | : 2.8mV/10K Ω | Power requiremnts | : AC 100V, 50Hz [DM] : AC 230V, 50Hz [EUR] |
| CD, Tuner, Aux, Tape | : 180mV/10K Ω | Dimensions (W \times H \times D) | : 285 \times 131 \times 319mm |
| Maximun Input level | | Weight(net) | : 7Kg |
| Phono | : 130mV | Standard accessories | |
| CD, Tuner, Aux, Tape | : 9V | Remote control unit | : 1 |
| Channel Separation(Input Short) | : 65dB (1KHz, 1W, D.B.F) | Operator's manual | : 1 |
| Residual noise | : 0.5mV | | |

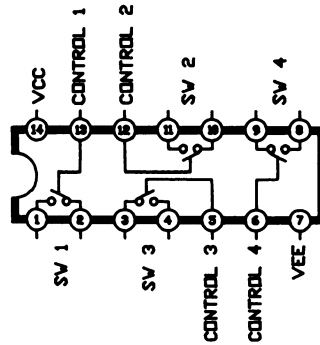
* Improvements may result in specification or feature changes without notice.

IC FUNCTION (MI-COM BVIANAM 1187A)

| Pin No. | PIN NAME | I/O | DESCRIPTION |
|---------|-----------------|-----|-------------------------------------|
| 1 | FUNC MUTE | O | Function, Mute ON/OFF Output |
| 2 | -20dB MUTE | O | -20dB Mute ON/OFF Output |
| 3 | POWER MUTE | O | Power Mute Output |
| 4 | SOURCE REC, OUT | O | Source recoding Output |
| 5 | OPTION | I | Option port "HIGH" LEVEL |
| 6 | OPTION | I | |
| 7 | PROTECT IN | I | Protect Input |
| 8 | STBY | O | Stand by LED ON/OFF Output |
| 9 | POWER ON/OFF | O | Power ON/OFF Output |
| 10 | AUX | O | Function LED ON/OFF Output |
| 11 | PHONO | O | Function LED ON/OFF Output |
| 12 | N/C | | Non connection |
| 13 | TUNER | | |
| 14 | CD | O | Function LED ON/OFF Output |
| 15 | TAPE 1 | | |
| 16 | TAPE 2/MD | | |
| 17 | Vss | I | GROUND |
| 18, 19 | N/C | I | Non connection |
| 20 | RESET | I | Divice reset pluse input |
| 21 | XL 1 | O | Crystal element connection terminal |
| 22 | XL 2 | I | |
| 23 | TAPE 2 → 1 | O | TAPE1,2 Recording Output |
| 24 | TAPE 2 → 1 | | |
| 25, 26 | KEY OUT | O | Key mqtrix singal IN/OUT PORT |
| 27, 28 | KEY IN | I | |
| 29 | TAPE2 REC IN | I | TAPE2,1 Recording Input |
| 30 | TAPE1 REC IN | I | |
| 31 | SOURCE REC, OUT | O | Source recoding Output |
| 32, 34 | N/C | | Non connection |
| 33 | FUNC DOWN | I | Function UP/DOWN Input |
| 35 | FUNC UP | I | |
| 36 | BUS IN | I | System control simgal Input |
| 37 | REMOTE IN | I | Remote control simgal Input |
| 38 | N/C | | Non connection |
| 39 | VDD | I | +5V |
| 40 | BUS OUT | O | System control singal Output |
| 41 | N/C | | Non connection |
| 42 | VR UP | O | Volum UP/DOWN Output |
| 43 | VR DOWN | O | |
| 44 | CD DIRECT | O | CD Direct led ON/OFF Output |

IC BLOCK DIAGRAM

LC4966BH



TO-92L



1. Emitter
2. Collector
3. Base

KSA1175Y
KSD1021Y
KSR1206
KSR1210

TO-92



1. Emitter
2. Collector
3. Base

KTC2878BT
2SA1268GR
2SAC3200GR
KTA1266Y

TO-92



1. Drain
2. Gate
3. Source

KTK117Y

TO-92L



1. Emitter
2. Collector
3. Base

KSA916Y
KSC2316Y

TO-126



1. Emitter
2. Collector
3. Base

2SA1209S
2SC2911S

TO-220



1. Base
2. Collector
3. Emitter

2SC4883A
2SD1585L
2SA1859A
KSD288Y

TO-220



1. INPUT
2. GND
3. OUTPUT

MC7812C

TO-3P

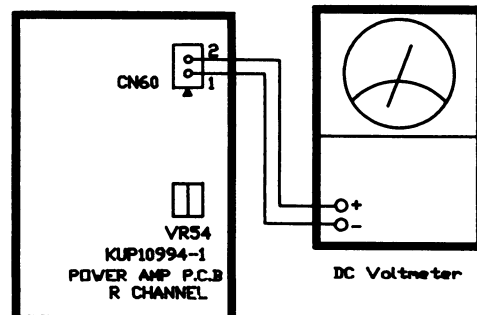
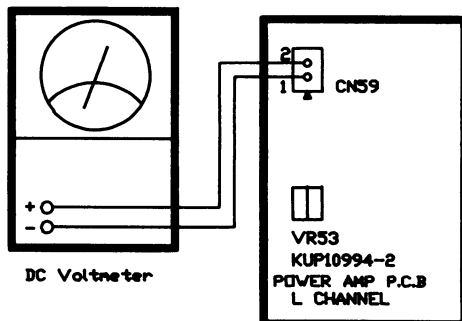


1. Base
2. Collector
3. Emitter

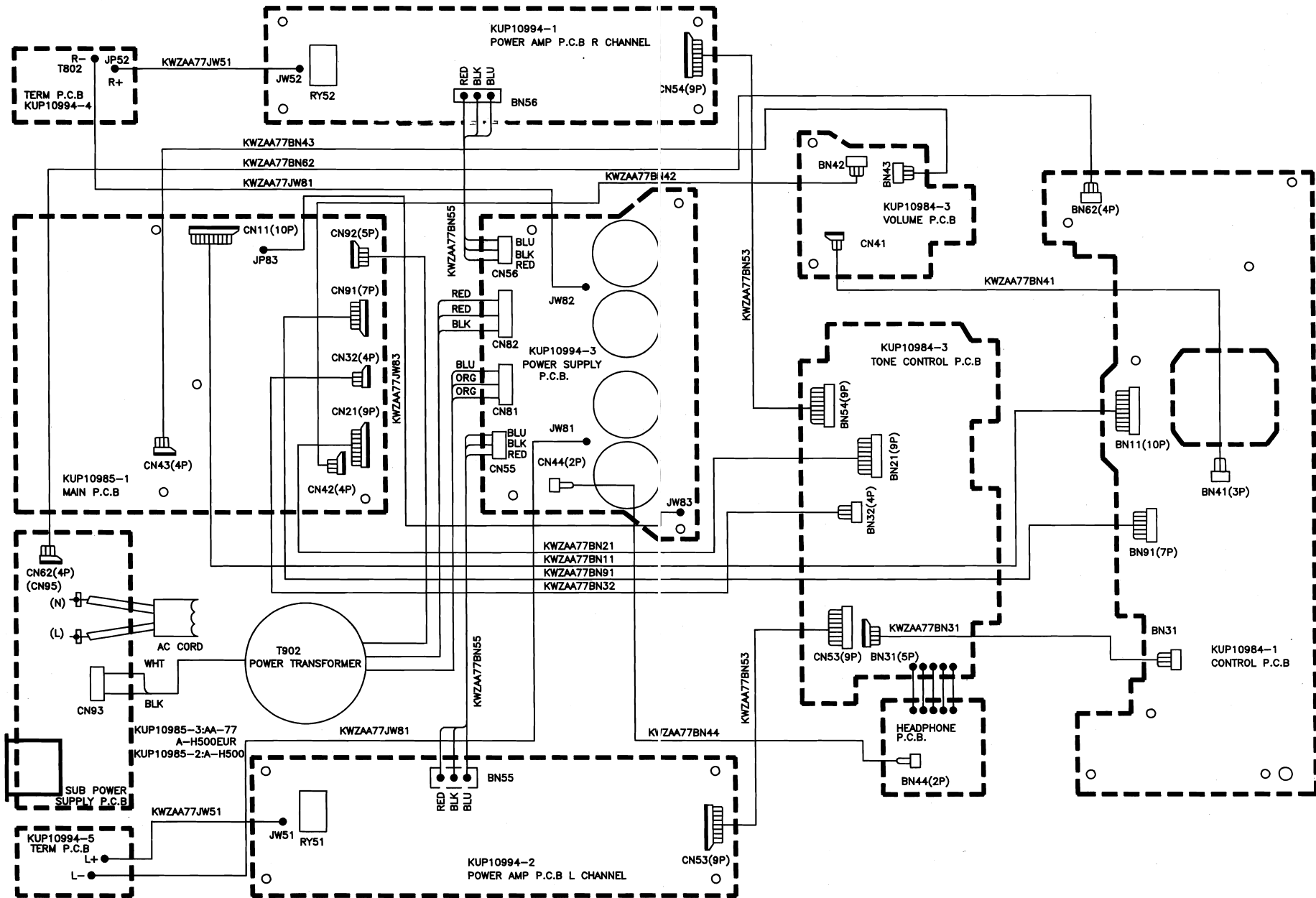
2SD7180
2SB6880

BIAS CURRENT ADJUSTMENT

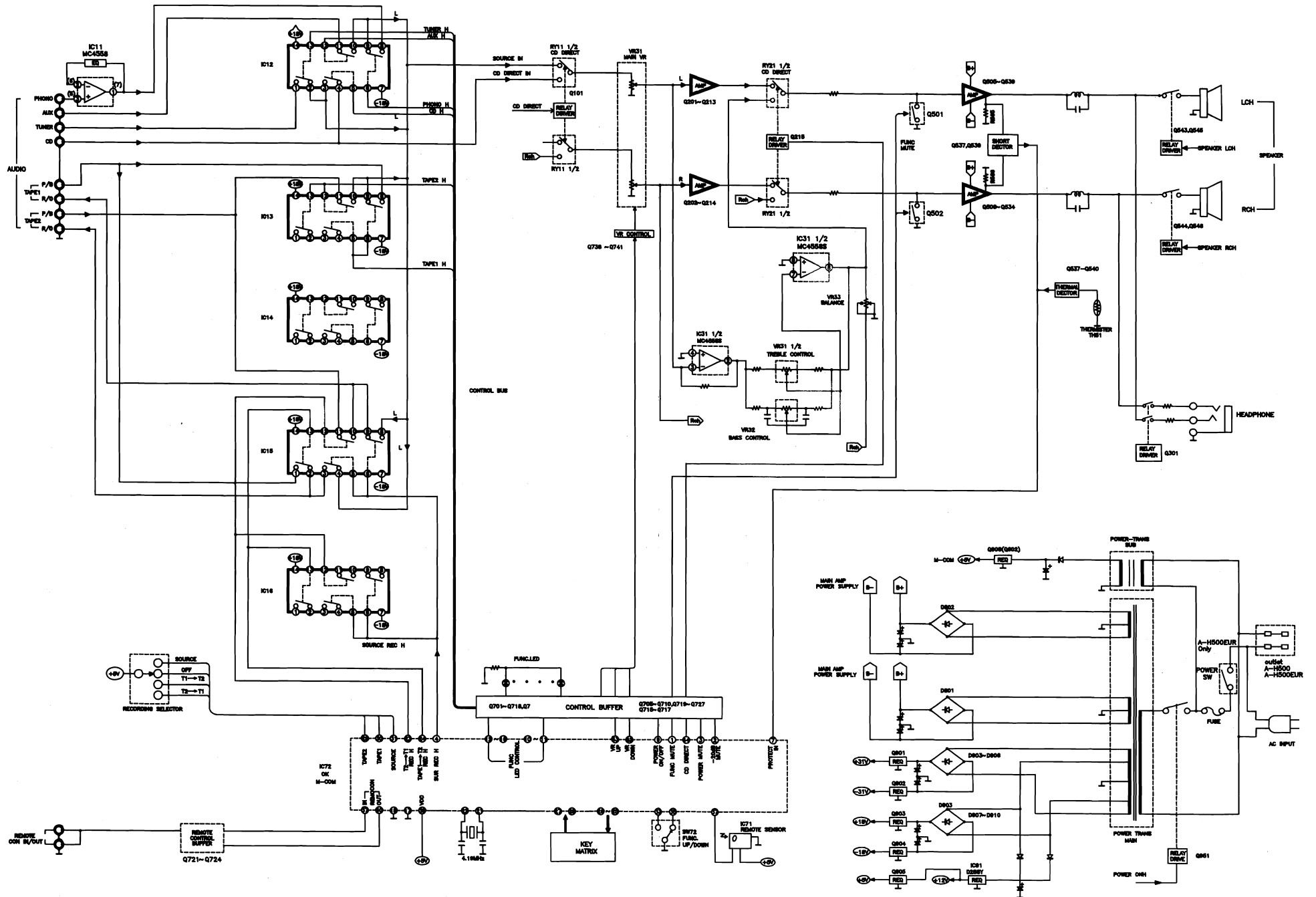
1. Test equipment connection is shown in figure.
2. Place unit volume is minimum position.
3. Adjust VR53("L"CH), VR54("R"CH) so that the DC Voltage is 11mV.



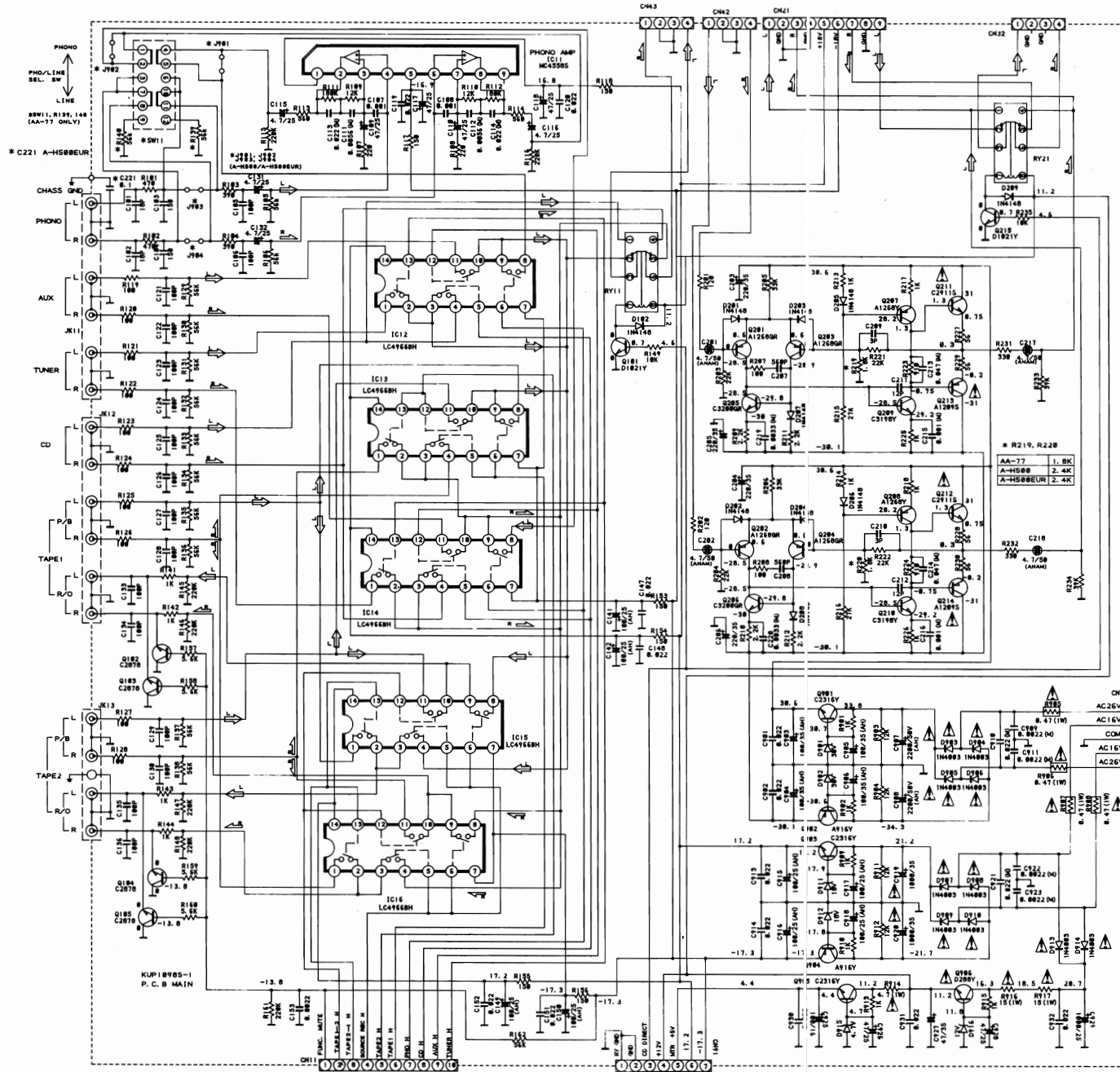
WIRING DIAGRAM



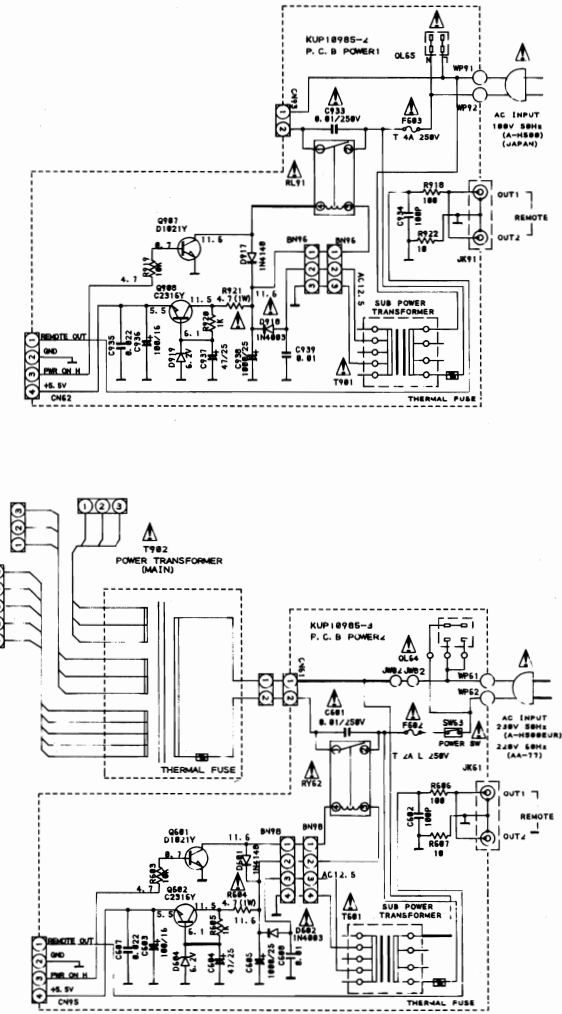
BLOCK DIAGRAM

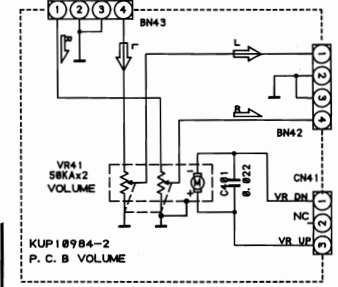
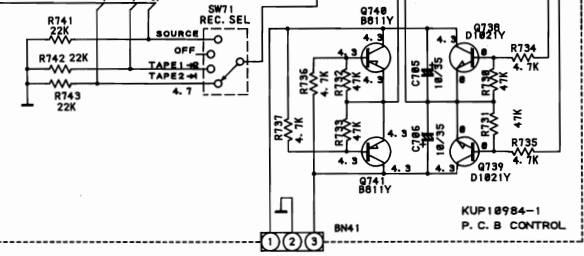
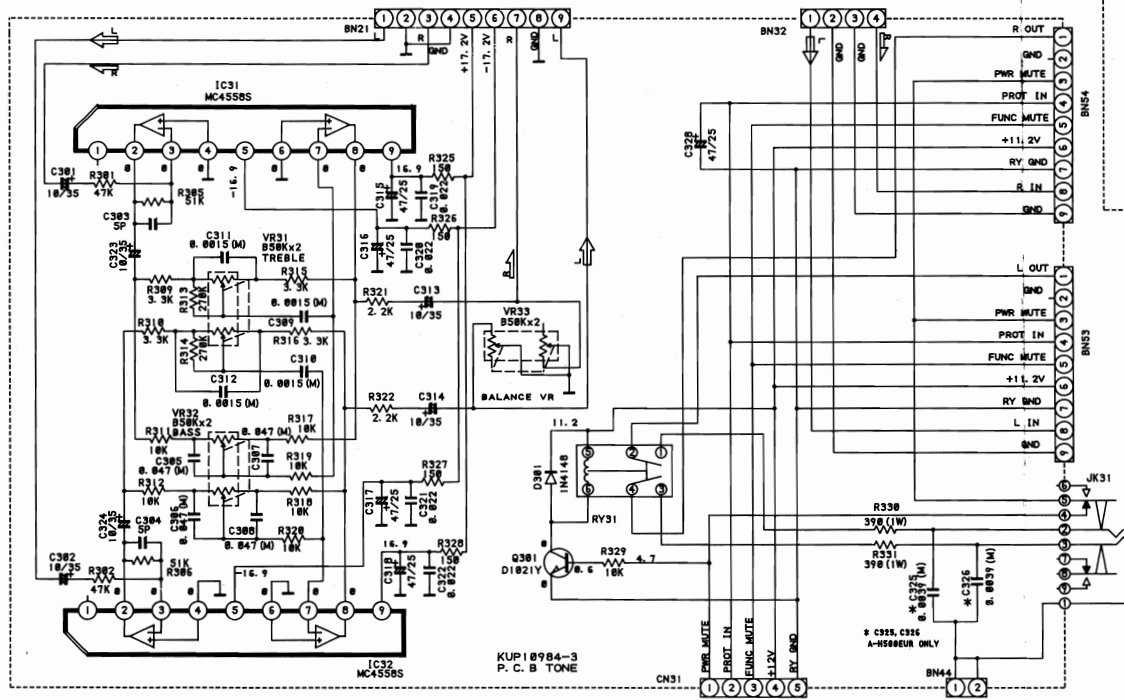
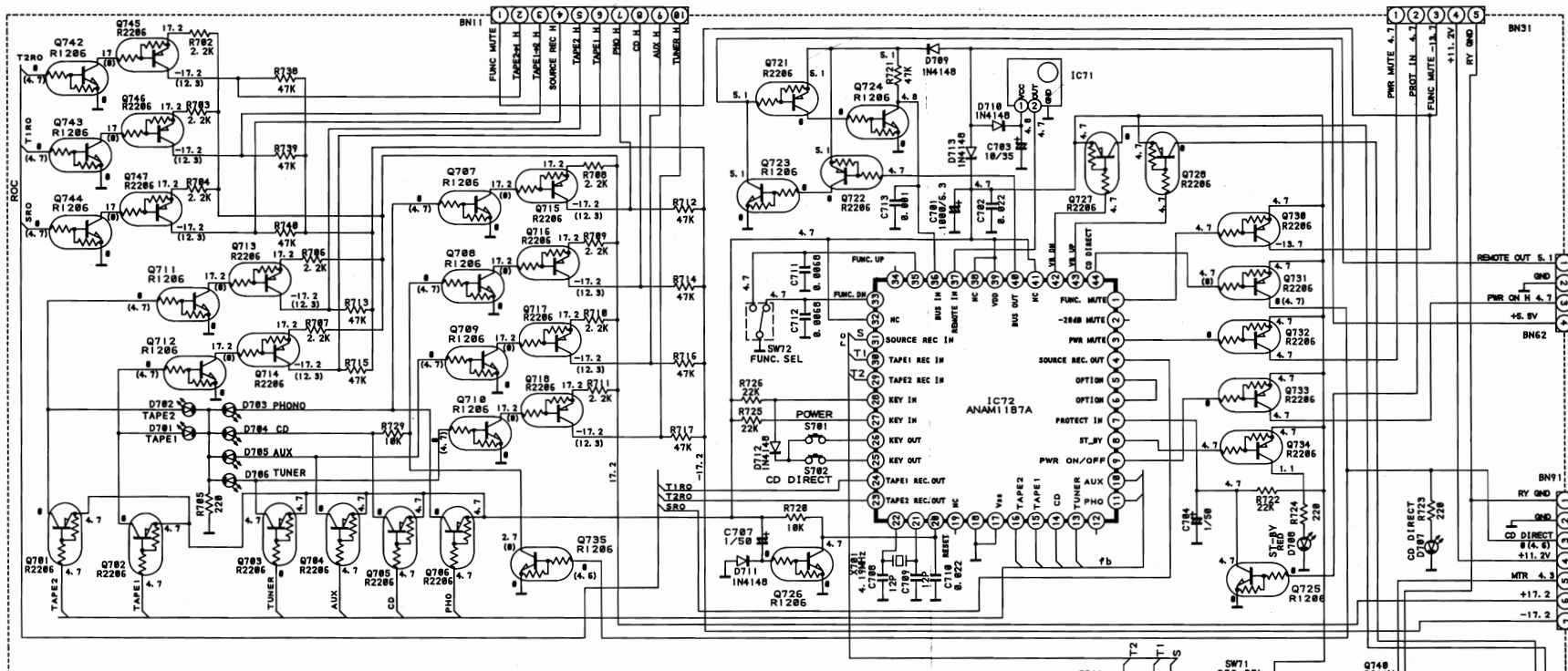


SCHEMATIC DIAGRAM



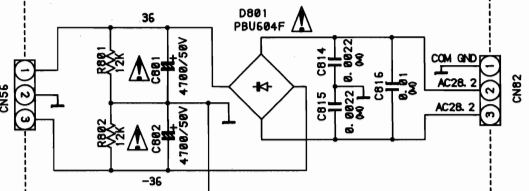
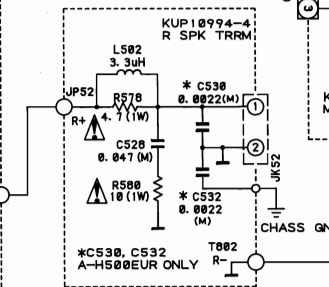
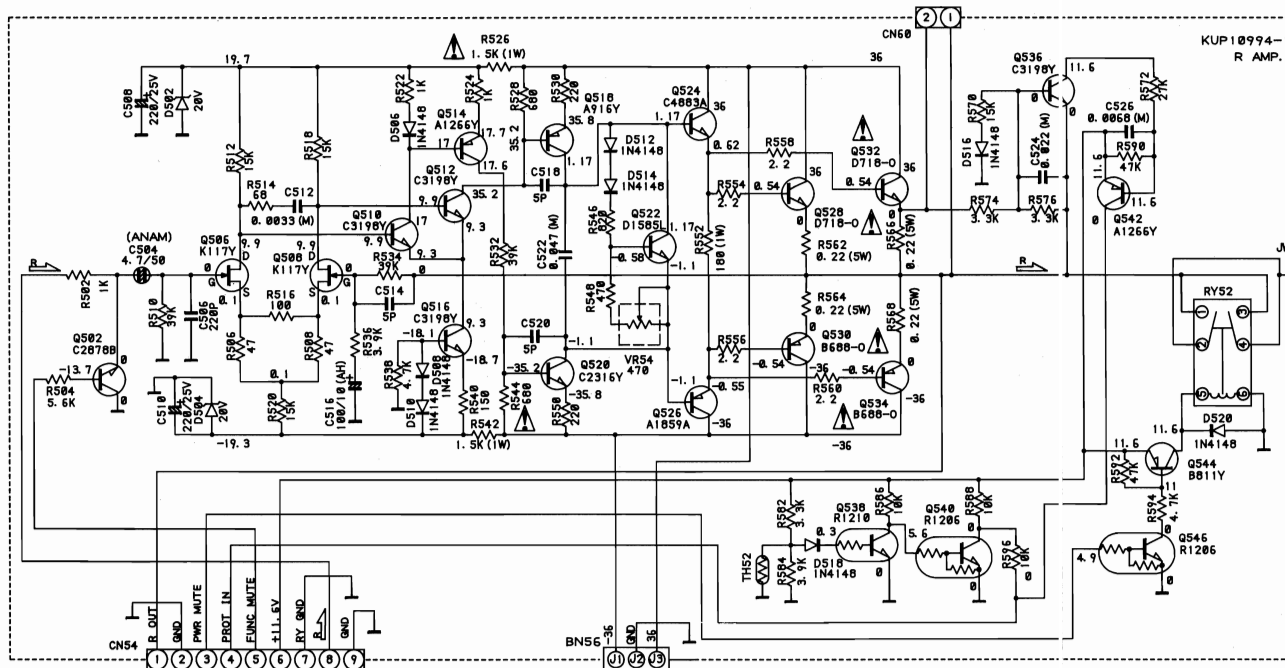
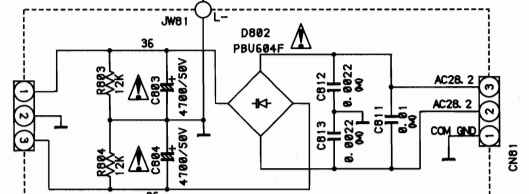
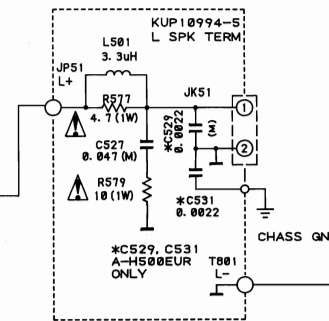
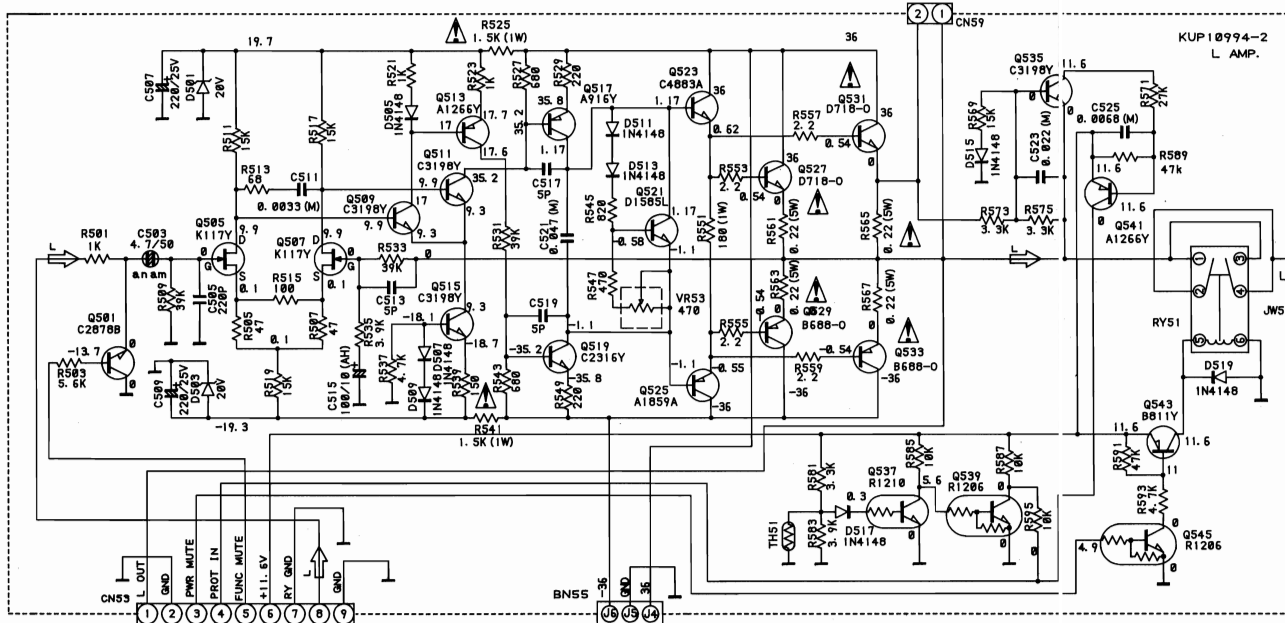
- * IMPORTANT SAFETY NOTICE ***
- * COMPONENTS IDENTIFIED BY Δ MARK HAVE SPECIAL CHARACTERISTICS. IMPORTANT FOR SAFETY, WHEN REPLACING ANY OF THESE COMPONENTS USE ONLY MANUFACTURER'S SPECIFIED PART.
 - * THE UNIT OF RESISTANCE IS OHM, K=1000 OHM, M=1000 KOHM.
 - * THE CAPACITANCE IS MICROFARAD P=1000 FARAD.
 - * THIS SCHEMATIC DIAGRAM MAY BE MODIFIED AT ANY TIME WITH THE IMPROVEMENT OF PERFORMANCE.
 - * ALL VOLTAGE ARE MEASURED WITH GROUND. DC VALUES WITH NO SIGNAL. AC RMS.





*** IMPORTANT SAFETY NOTICE :**
 COMPONENTS IDENTIFIED BY Δ MARK HAVE SPECIAL CHARACTERISTICS. IMPORTANT FOR SAFETY, WHEN REPLACING ANY OF THESE COMPONENTS USE ONLY MANUFACTURER'S SPECIFIED PART.

* THE UNIT OF RESISTANCE IS OHM, K=1000 OHM, M=1000 KOHM
 * THE CAPACITANCE IS MICROFARAD P=PICO FARAD
 * THIS SCHEMATIC DIAGRAM MAY BE MODIFIED AT ANY TIME WITH THE IMPROVEMENT OF PERFORMANCE.
 * ALL VOLTAGE ARE MEASURED WITH GROUND.
 DC:VALUES WITH NO SIGNAL, NORMAL VOLTAGE.
 () VOLTAGE IS ACTIVE VOLTAGE.



*** IMPORTANT SAFETY NOTICE :**

COMPONENTS IDENTIFIED BY Δ MARK HAVE SPECIAL CHARACTERISTICS. IMPORTANT FOR SAFETY, WHEN REPLACING ANY OF THESE COMPONENTS USE ONLY MANUFACTURER'S SPECIFIED PART.

* THE UNIT OF RESISTANCE IS OHM, K=1000 OHM, M=1000 KOHM.

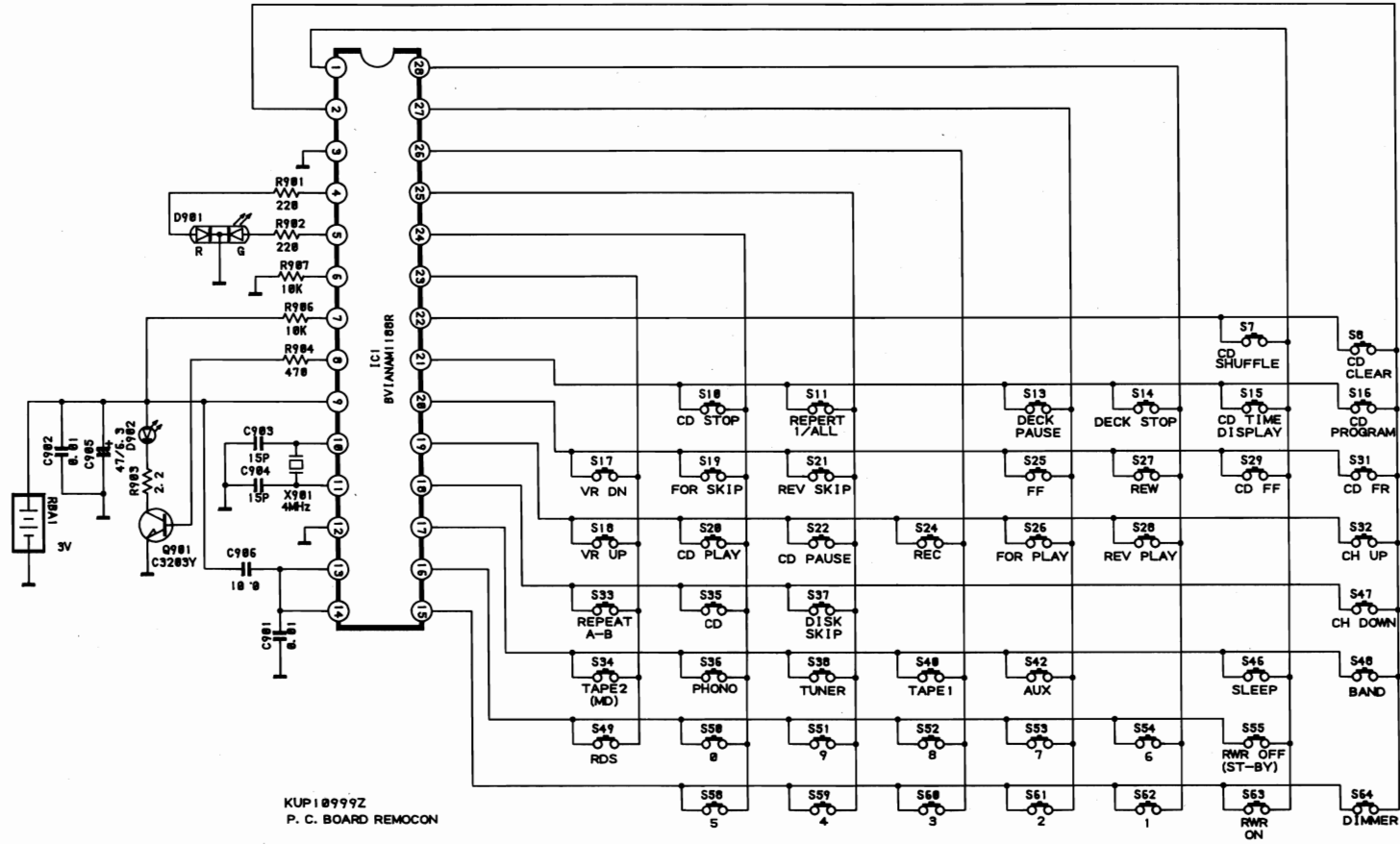
* THE CAPACITANCE IS MICROFARAD P=PICO FARAD

* THIS SCHEMATIC DIAGRAM MAY BE MODIFIED AT ANY TIME WITH THE IMPROVEMENT OF PERFORMANCE.

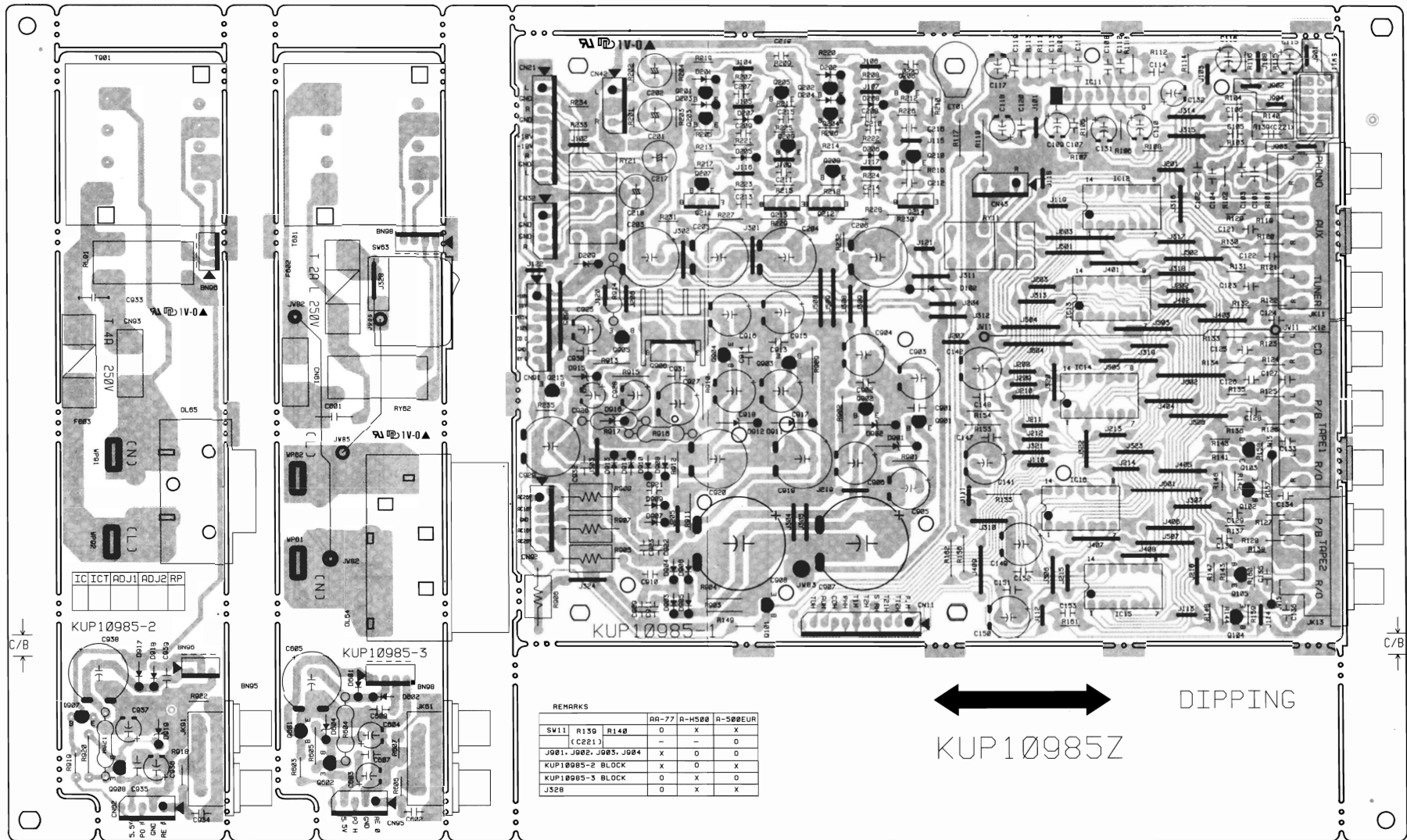
* ALL VOLTAGE ARE MEASURED WITH GROUND.

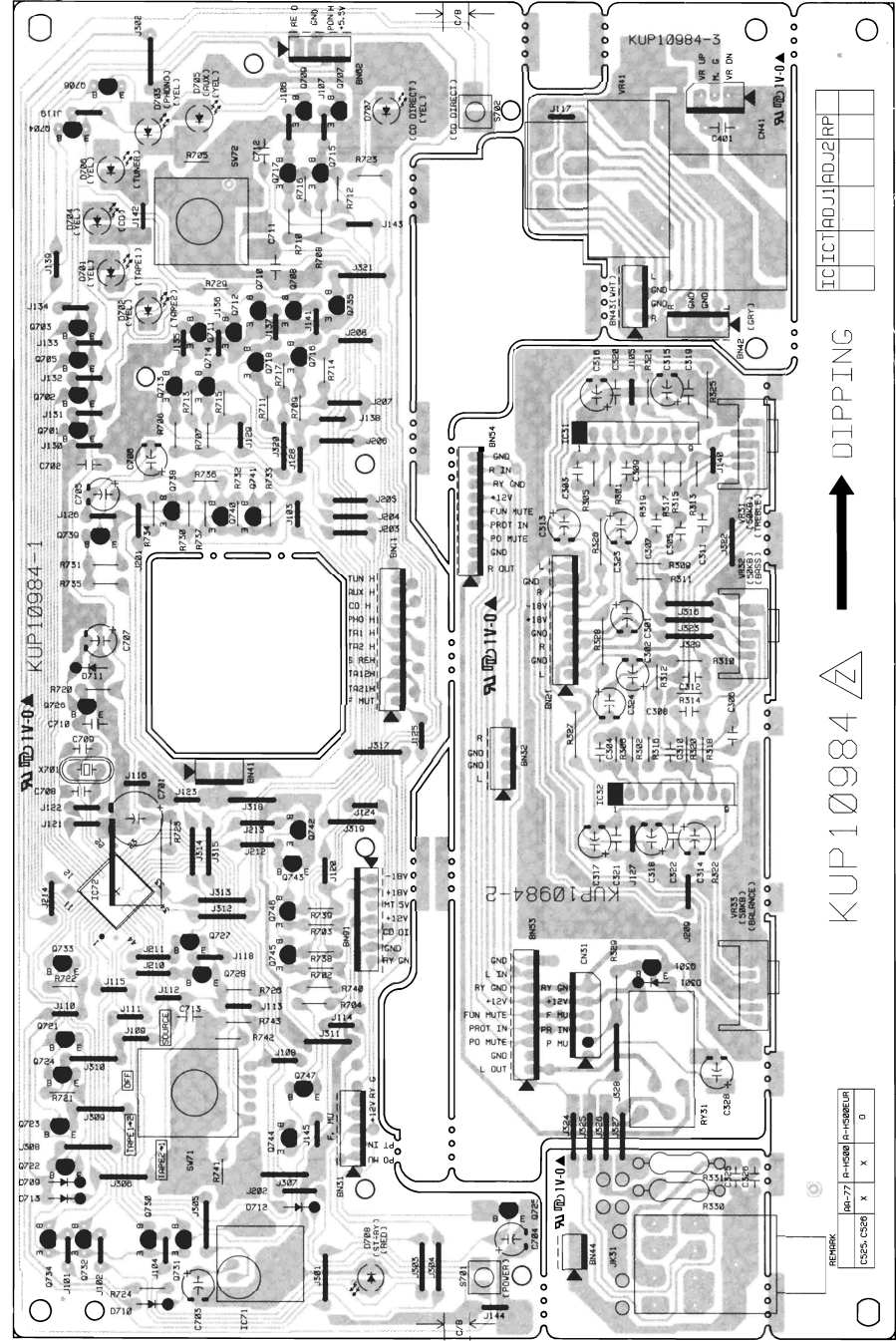
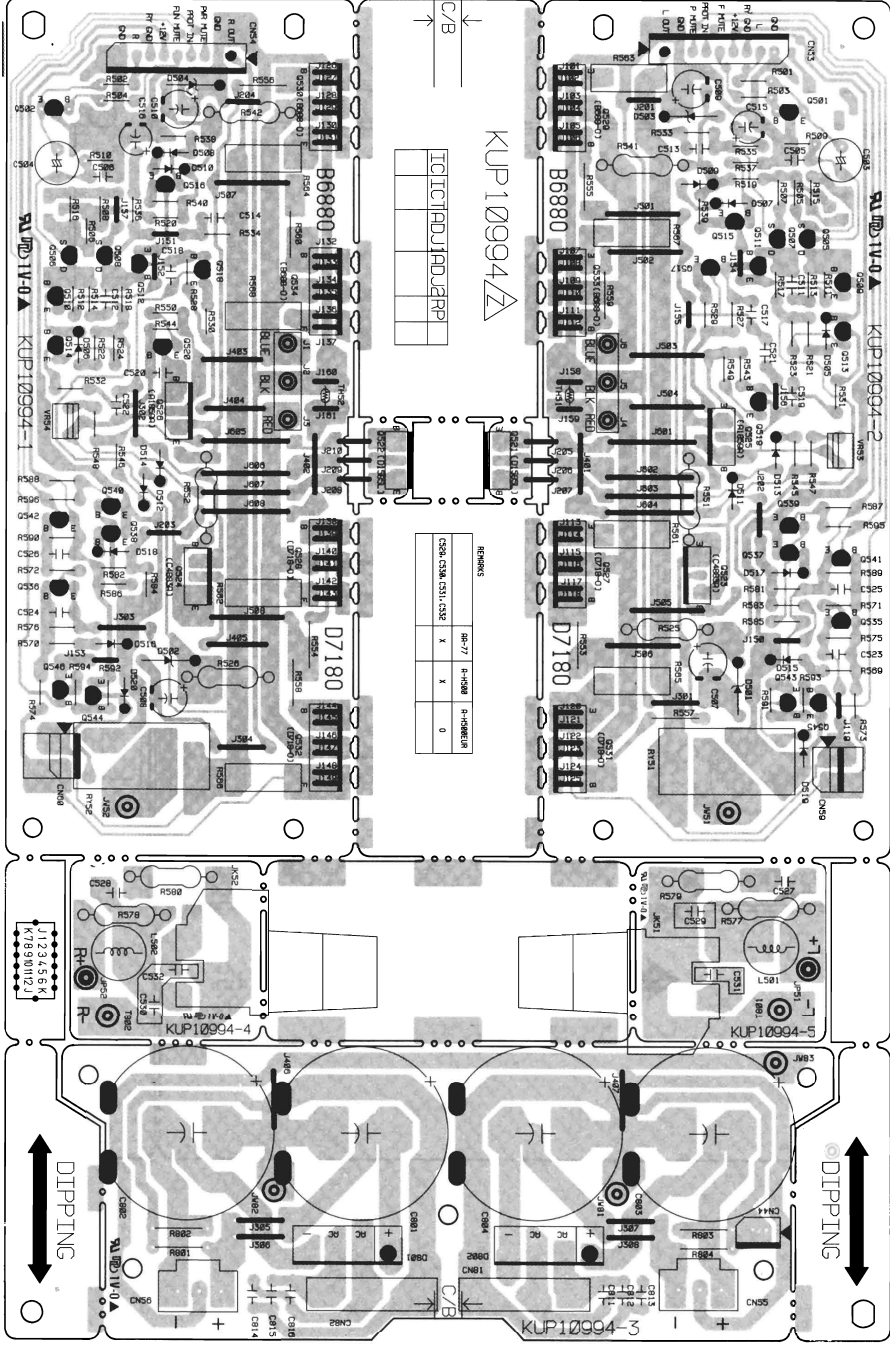
DC: VALUES WITH NO SIGNAL
AC: RMS

REMOTECONTROL SCHEMATIC DIAGRAM

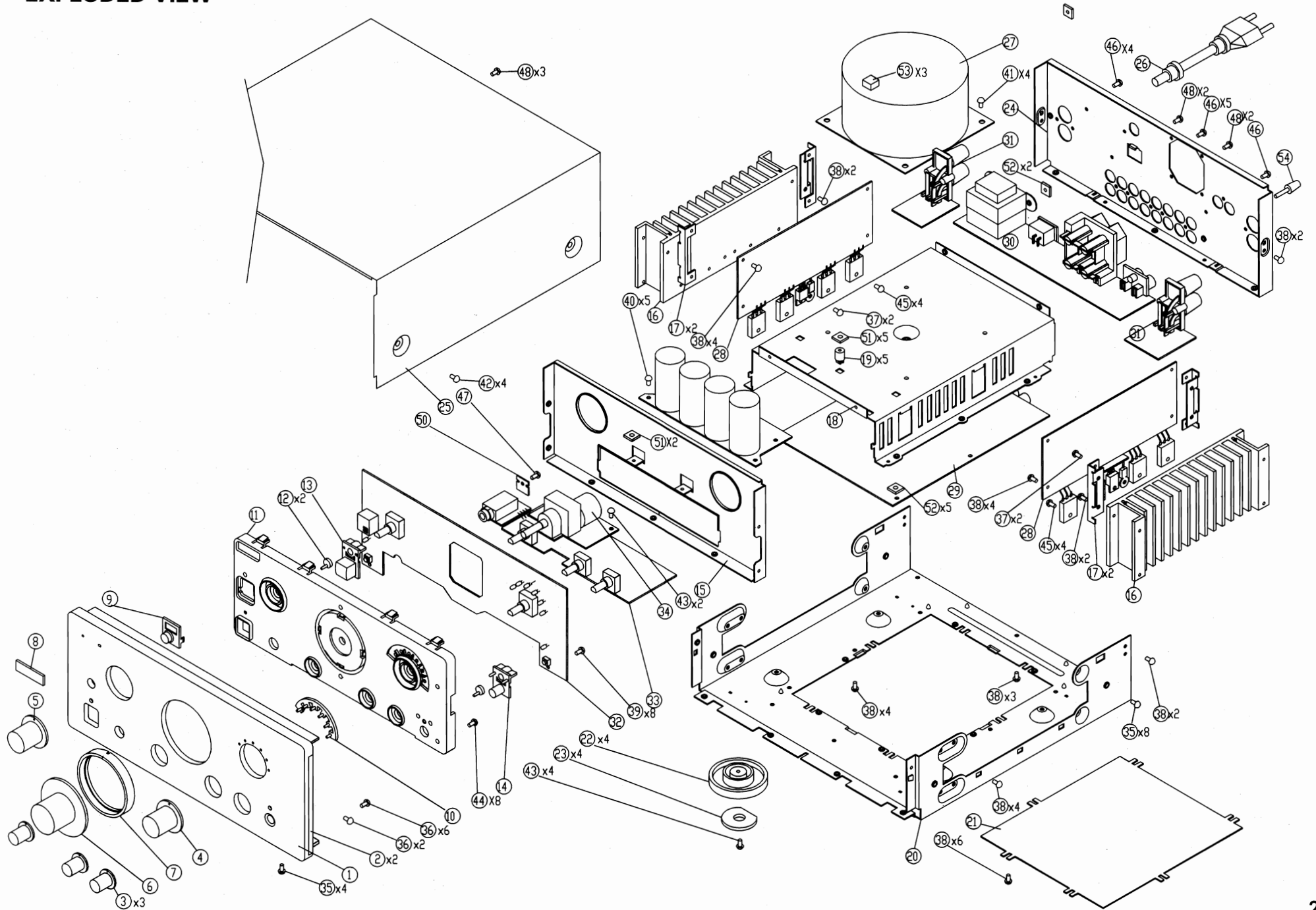


PRINTED CIRCUIT BOARDS





EXPLODED VIEW



EXPLODED VIEW [A-H500]

| Ref. No. | Part No. | Description | Remarks |
|----------|------------|--------------------------------|---------|
| 1 | 9A06231600 | PANEL,AL | |
| 2 | 9A06231700 | BAR,SIDE | |
| 3 | 9A06228400 | VOLUME CAP ASS'Y (C) | |
| 4 | 9A06228300 | VOLUME CAP ASS'Y (B) | |
| 5 | 9A06228800 | VOLUME CAP ASS'Y | |
| 6 | 9A06228100 | VOLUME CAP ASS'Y (A) | |
| 7 | 9A06228600 | HOUSING,VOLUME | |
| 8 | 9A06224200 | BADGE,TEAC | |
| 9 | 9A06227600 | SENSOR,WINDOW | |
| 10 | 9A06319300 | PANEL,MOLD | |
| 11 | 9A06227400 | INDICATOR,POWER | |
| 12 | 9A06227500 | INDICATOR | |
| 13 | 9A06314500 | KNOB,POWER | |
| 14 | 9A06319200 | KNOB,TACT | |
| 15 | 9A06235100 | CHASSIS, FRONT | |
| 16 | 9A06232300 | HEAT SINK | |
| 17 | 9A06232100 | BRACKET, HEAT SINK | |
| 18 | 9A06232200 | SUPPORT,TRANS | |
| 19 | 9A06229100 | MOUNT,PCB A4-92-1728 | |
| 20 | 9A06234900 | CHASSIS, BOTTOM | |
| 21 | 9A06235000 | PLATE, BOTTOM | |
| 22 | 9A06315500 | FOOT | |
| 23 | 9A06229300 | CUSHION,FOOT | |
| 24 | 9A06320100 | PANEL,REAR [EUR] | |
| | 9A06231100 | PANEL,REAR [DM] | |
| 25 | 9A06230900 | CABINET, TOP | |
| 26 | 9A01376900 | BUSHING,AC CORD HEYCO(SR-5N-4) | |
| 27 | 9A06232000 | TRANS,TROIDAL [DM] | |
| | 9A06326200 | TRANS,TROIDAL [EUR] | |
| 28,30,31 | 9A06232800 | POWER PCB ASS'Y [DM] | |
| | 9A06232810 | POWER PCB ASS'Y [EUR] | |
| 29 | 9A06232700 | MAIN PCB ASS'Y [DM] | |
| | 9A06232710 | MAIN PCB ASS'Y [EUR] | |
| 32,33 | 9A06232600 | SUB PCB ASS'Y [DM] | |
| | 9A06232610 | SUB PCB ASS'Y [EUR] | |
| 34 | 9A06237000 | VOLUME,MOTOR RK6312MC282 | |
| 35 | 9A01397400 | SCREW KTS3+8J | |
| 36 | 9A06229000 | SCREW,SPECIAL | |
| 37 | 9A01535800 | SCREW,KTB3+8J | |
| 38 | 9A01532600 | SCREW,KTB3+6J | |
| 39 | 9A01377400 | SCREW,KTB3+10G | |
| 40 | 9A05338500 | SCREW,KTB3+16J | |
| 41 | 9A05984300 | SCREW,KTB4+6FFZ | |
| 42 | 9A05338800 | SCREW,KTB4+6F | |
| 43 | 9A05339200 | SCREW,KTW3+8J | |
| 44 | 9A06234700 | SCREW,KTW3+6F | |
| 45 | | SCREW,KTW3+10G | |
| 46 | 9A01377300 | SCREW,KTB3+10GFZ | |
| 47 | | SCREW,KTW3+10G | |
| 48 | 9A01377200 | SCREW,KTB3+8JFZ | |
| 49 | | vacant | |
| 50 | 9A06319600 | BRACKET | |
| 51 | 9A06229600 | RUBBER,PCB | |
| 52 | 9A06229400 | RUBBER,MECHA | |
| 53 | 9A06321100 | RUBBER,TRANS | |
| 54 | 9A05917200 | GROUND TERMINAL | |

INCLUDED ACCESSORIES

| Ref. No. | Part No. | Description | Remarks |
|----------|-------------|-----------------------------------|---------|
| | 9A063182-00 | REMOTE CONTROL UNIT, RC-613 [EUR] | |
| | 9A062357-00 | REMOTE CONTROL UNIT, RC-612 [DM] | |
| | 9A06054100 | OWNERS MNL, A-H500 JAPAN | |
| | 9A06054500 | OWNERS MNL, A-H500 MULTI | |

ELECTRICAL PARTS LIST

MAIN PCB ASSY

| Ref. No. | Part No. | Description |
|----------|------------|-----------------------|
| | 9A06232700 | MAIN PCB ASS'Y [DM] |
| | 9A06232710 | MAIN PCB ASS'Y [EUR] |
| | 9A06235300 | PCB,MAIN |
| BN96 | 9A06238400 | WIRE ASS'Y |
| C141,142 | 9A06226600 | C.,ELECT |
| C149,150 | 9A06226600 | C.,ELECT |
| C201,202 | 9A05322200 | C.,ELECT A1HQ4R7B |
| C203-206 | 9A06226900 | C.,ELECT |
| C217,218 | 9A05322200 | C.,ELECT A1HQ4R7B |
| C219,220 | 9A05938000 | C.,MYLAR 0.0033UF |
| C903-906 | 9A06226800 | C.,ELECT |
| C907,908 | 9A06227100 | C.,ELECT |
| C915-918 | 9A06226600 | C.,ELECT |
| C919,920 | 9A06227000 | C.,ELECT |
| C933 | 9A06224000 | C.,CERAMIC |
| C938 | 9A06226700 | C.,ELECT |
| CN11 | 9A05991400 | WAFER |
| CN21 | 9A05892600 | WAFER(9P) |
| CN42,43 | 9A05329300 | WAFER MOLEX 5267-04A |
| CN62 | 9A05329300 | WAFER MOLEX 5267-04A |
| CN91 | 9A05330000 | WAFER MOLEX 5267-07A |
| CN92 | 9A05894700 | WAFER(5P) |
| CN93 | 9A05329000 | WAFER MOLEX35309-0210 |
| D102 | 9A01390600 | DIODE,1N4148T |
| D201-209 | 9A01390500 | DIODE,1N4148MT |
| D601 | 9A01390500 | DIODE,1N4148MT |
| D602 | 9A05194600 | DIODE,1N4003SRT |
| D604 | 9A06236200 | DIODE,ZENER MTZJ6.2BT |
| D901,902 | 9A05902200 | DIODE,ZENER,30V |
| D903-910 | 9A05194600 | DIODE,1N4003SRT |
| D911,912 | 9A06236400 | DIODE,ZENER UZ18BMT |
| D913,914 | 9A05194600 | DIODE,1N4003SRT |
| D915 | 9A06236100 | DIODE,ZENER MTZJ4.7BT |
| D916 | 9A05359600 | DIODE,ZENER MTZJ12BT |
| F602 | 9A05328200 | HOLDER,FUSE KJCF5S |
| F603 | 9A05328200 | HOLDER,FUSE KJCF5S |
| IC11 | 9A05195800 | IC.,KA4558S |
| IC12,13 | 9A05971200 | IC.,LC4966 |
| IC14,15 | 9A05971200 | IC.,LC4966 |
| IC16 | 9A05971200 | IC.,LC4966 |
| JK11,12 | 9A06230400 | TERMINAL,IN/OUT (G) |
| JK13 | 9A06230300 | TERMINAL,IN/OUT |
| JK13 | 9A06326400 | TERMINAL,IN/OUT |
| JK91 | 9A06230200 | JACK,REMOTE(2P) |
| OL63 | 9A06224300 | OUTLET [DM] |
| OL64 | | OUTLET [EUR] |
| Q101 | 9A03811700 | TR,KSD1021-YTA |
| Q102-105 | 9A05896000 | TR,KTC2878B |
| Q201-204 | 9A06236600 | TR,KTA1268GRT |
| Q205,206 | 9A06236700 | TR,KTC3200GRT |
| Q207,208 | 9A05895900 | TR,KTA1266YT |
| Q209,210 | 9A05892800 | TR,KTC3198YT |
| Q211,212 | 9A06225500 | TR,2SC2911S |
| Q213,214 | 9A06225300 | TR,2SA1209S |
| Q215 | 9A03811700 | TR,KSD1021-YTA |

MAIN PCB ASSY

| Ref. No. | Part No. | Description |
|----------|------------|---------------------|
| Q601 | 9A03811700 | TR,KSD1021-YTA |
| Q602 | 9A05196800 | TR,KSC2316-Y-SHTA |
| Q901 | 9A05196800 | TR,KSC2316-Y-SHTA |
| Q902 | 9A05196700 | TR,KSA916-Y-SHTA |
| Q903 | 9A05196800 | TR,KSC2316-Y-SHTA |
| Q904 | 9A05196700 | TR,KSA916-Y-SHTA |
| Q905 | 9A05196800 | TR,KSC2316-Y-SHTA |
| Q906 | 9A05937400 | HEAT SINK ASSY |
| R905-908 | 9A05897200 | R.,FUSE 0.47-OHM,1W |
| R914 | 9A05896400 | R.,4.7-OHM,1W,METAL |
| R916,917 | 9A06234400 | R.,15-OHM,1W,METAL |
| R921 | 9A05896400 | R.,4.7-OHM,1W,METAL |
| RY11,21 | 9A06224500 | RELAY G5V-2-DC12V |
| T601 | 9A06326700 | TRANS,SUB [DM] |
| T901 | 9A06231900 | TRANS,SUB [EUR] |

POWER PCB ASSY

| Ref. No. | Part No. | Description |
|-----------|------------|------------------------|
| | 9A06232800 | POWER PCB ASS'Y [DM] |
| | 9A06232810 | POWER PCB ASS'Y [EUR] |
| | 9A06235400 | PCB,POWER |
| BN55,56 | 9A06238100 | WIRE ASS'Y |
| C503,504 | 9A05322200 | C.,ELECT A1HQ4R7B |
| C515,516 | 9A06226500 | C.,ELECT |
| C801-804 | 9A06227200 | C.,ELECT |
| CN44 | 9A05328900 | WAFER MOLEX 5267-02A |
| CN53,54 | 9A05892600 | WAFER(9P) |
| CN55,56 | 9A06230800 | WAFER |
| CN59,60 | 9A06230600 | WAFER |
| D501-504 | 9A06236300 | DIODE, ZENER UZP20BM |
| D505-520 | 9A01390500 | DIODE,1N4148MT |
| D801,802 | 9A06224900 | DIODE, BRIDGE PBU604F |
| L 501,502 | 9A04875100 | COIL, DC-D2100 |
| Q501,502 | 9A05896000 | TR,KTC2878B |
| Q505-508 | 9A06236800 | F.E.T KTK117Y |
| Q509-512 | 9A05892800 | TR,KTC3198YT |
| Q513,514 | 9A05895900 | TR,KTA1266YT |
| Q515,516 | 9A05892800 | TR,KTC3198YT |
| Q517,518 | 9A05196700 | TR,KSA916-Y-SHTA |
| Q519,520 | 9A05196800 | TR,KSC2316-Y-SHTA |
| Q521,522 | 9A05977200 | TR.,2SD1585L |
| Q523,524 | 9A05977600 | TR.,2SC4883A |
| Q525,526 | 9A05977500 | TR.,2SA1859A |
| Q527,528 | 9A06225600 | T.R 2SD7180 |
| Q529,530 | 9A06225400 | T.R 2SB6880 |
| Q531,532 | 9A06225600 | T.R 2SD7180 |
| Q533,534 | 9A06225400 | T.R 2SB6880 |
| Q535,536 | 9A05892800 | TR,KTC3198YT |
| Q537,538 | 9A05197000 | TR,KSR1210TA |
| Q539,540 | 9A05196900 | TR,KSR1206TA |
| Q541,542 | 9A05895900 | TR,KTA1266YT |
| Q543,544 | 9A03747300 | TR,KSB811-YTA |
| Q545,546 | 9A05196900 | TR,KSR1206TA |
| R525,526 | 9A06234500 | RES , METAL OXIDE FILM |
| R541,542 | 9A06234500 | RES , METAL OXIDE FILM |

POWER PCB ASSY

| Ref. No. | Part No. | Description |
|----------|------------|--------------------------|
| R551,552 | 9A06234600 | RES , METAL OXIDE FILM |
| R561-568 | 9A05896300 | R.,0.22-OHM,5W |
| R577,578 | 9A05896400 | R.,4.7-OHM,1W |
| R579,580 | 9A05338000 | R,METAL OXIDE FILM 1W 10 |
| RY51,52 | 9A06224600 | RELAY G5Z-2A-DC12V |
| T801,802 | 9A06227300 | PIN , G.T |
| VR53,54 | 9A06236500 | RES , SEMI FIXED |

SUB PCB ASSY

| Ref. No. | Part No. | Description |
|----------|------------|------------------------|
| | 9A06232600 | SUB PCB ASS'Y [DM] |
| | 9A06232610 | SUB PCB ASS'Y [EUR] |
| | 9A06235200 | PCB,SUB |
| BN11 | 9A06237200 | WIRE ASS'Y |
| BN21 | 9A06237300 | WIRE ASS'Y |
| BN31 | 9A06237400 | WIRE ASS'Y |
| BN41 | 9A06237600 | WIRE ASS'Y |
| BN42 | 9A06237700 | WIRE ASS'Y |
| BN43 | 9A06237800 | WIRE ASS'Y |
| BN44 | 9A06237900 | WIRE ASS'Y |
| BN53,54 | 9A06238000 | WIRE ASS'Y |
| BN62 | 9A06238200 | WIRE ASS'Y |
| BN91 | 9A06238300 | WIRE ASS'Y |
| C701 | 9A06023800 | C.,ELECT 1000UF/6.3V |
| D701-707 | 9A05890300 | LED,YELLOW SLR342YCF02 |
| D708 | 9A05195000 | LED,RED SLR342VCF02 |
| D709-713 | 9A01390500 | DIODE,1N4148MT |
| IC31,32 | 9A05195800 | IC.,MC4558S |
| IC71 | 9A05834700 | SENSOR REMOTE JC-75MK3 |
| IC72 | 9A06326900 | IC.,BVIANAM1187A |
| JK31 | 9A05316900 | JACK HTJ064-05BG |
| Q301 | 9A03811700 | TR,KSD1021-YTA |
| Q701-706 | 9A03745200 | TR,KSR2206TA |
| Q707-712 | 9A05196900 | TR,KSR1206TA |
| Q713-718 | 9A03745200 | TR,KSR2206TA |
| Q721,722 | 9A03745200 | TR,KSR2206TA |
| Q723-726 | 9A05196900 | TR,KSR1206TA |
| Q727-734 | 9A03745200 | TR,KSR2206TA |
| Q735 | 9A05196900 | TR,KSR1206TA |
| Q738,739 | 9A03811700 | TR,KSD1021-YTA |
| Q740,741 | 9A03747300 | TR,KSB811-YTA |
| Q742-744 | 9A05196900 | TR,KSR1206TA |
| Q745-747 | 9A03745200 | TR,KSR2206TA |
| RY31 | 9A06224600 | RELAY G5Z-2A-DC12V |
| S701,702 | 9A04882500 | SW,TACT SKHV10910A |
| SW71 | 9A06326800 | SW,ROTARY SRBV14065A |
| SW72 | 9A06224700 | VR,ENCODOR EC16B1210 |
| VR31-33 | 9A06236900 | RES,VARIABLE |
| X 701 | 9A05192900 | CRYSTAL, DC-D1800 |

OTHERS

| Ref. No. | Part No. | Description |
|----------|------------|-----------------------|
| F602 | 9A06225800 | FUSE 2C4000TLJ [DM] |
| F603 | 9A06320300 | FUSE 2C2000TLE [EUR] |
| T 902 | 9A06232000 | TRANS, TOROIDAL [DM] |
| T 902 | 9A06326200 | TRANS, TOROIDAL [EUR] |
| | 9A05892200 | CORD,POWER |
| | 9A06230100 | CORD,AC |

TEAC®

| | |
|---|--|
| TEAC CORPORATION | 3-7-3, Nakacho, Musashino-shi, Tokyo 180, Japan Phone: (0422) 52-5081 |
| TEAC AMERICA, INC. | 7733 Telegraph Road, Montebello, California 90640 Phone: (213) 726-0303 |
| TEAC CANADA LTD. | 340 Brunel Road, Mississauga, Ontario L4Z 2C2, Canada Phone: 905-890-8008 |
| TEAC UK LIMITED | 5 Marlin House, Marlins Meadow, The Croxley Centre, Watford, Herts, WD1 8YA, U.K. Phone: 0923-819631 |
| TEAC DEUTSCHLAND GmbH | Bahnstrasse 12, 65205 Wiesbaden-Erbenheim, Germany Phone: 0611-71580 |
| TEAC FRANCE S.A. | 17, Rue Alexis-de-Tocqueville, CE 005 92182 Antony Cedex, France Phone: (1) 42.37.01.02 |
| TEAC NEDERLAND BV | Perkinsbaan 11, 3439 ND Nieuwegein, Nederland Phone: 03-402-30229 |
| TEAC AUSTRALIA PTY., LTD. A.C.N. 005 408 462 | 106 Bay Street, Port Melbourne, Victoria 3207, Australia Phone: (03) 646-1733 |
| TEAC ITALIANA S.p.A. | Via C. Cantù 5, 20092 Cinisello Balsamo, Milano, Italy Phone: 02-66010500 |
