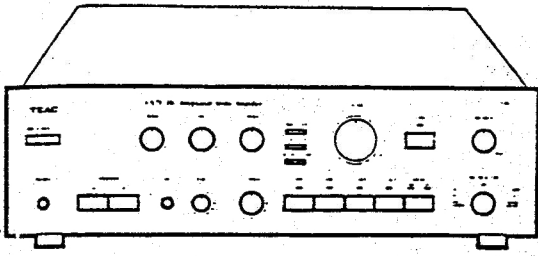


TEAC®



SERVICE MANUAL

A-X75

DC Integrated Stereo Amplifier

NOTES

1. In this manual, 0 dB is referenced to 1V.
2. Δ Parts marked with this sign are safety critical components. They must always be replaced with identical components - refer to the appropriate parts list and ensure exact replacements.
3. PC boards shown are viewed from foil side.

1 SPECIFICATIONS

Type DC Integrated Stereo Amplifier

Rated Output Power

(Both Channels, 8 ohms)

80W + 80W (1kHz, 0.03% T.H.D.)

75W + 75W (20Hz - 20kHz, 0.05% T.H.D.)

Total Harmonic Distortion

0.05% (20Hz - 20kHz, at 75W + 75W Output Power)

Output Bandwidth

IHF, -3dB, 10Hz - 50kHz

Frequency Response

TUNER, CD/AUX, TAPE 1, 2, to SP out 5Hz

40kHz +0, -2dB

PHONO to REC OUT, 20Hz - 20kHz ± 0.5dB (RIAA)

Input Sensitivity

PHONO MC 0.22µV/100 ohms

PHONO MM 2.2mV/47k ohms

TUNER, CD/AUX, TAPE 1, 2, 115mV/47k ohms

Rated Output Voltage/Impedance

TAPE REC 1.2. 100mV/47k ohms

Signal-to-Noise Ratio

(IHF A Network, short circuit)

PHONO MC 65dB

PHONO MM 75dB

TUNER, CD/AUX, TAPE 1, 2, 94dB

Tone Control

Bass ± 12dB, 100Hz

Mid ± 6dB, 1kHz

Treble ± 12dB, 10kHz

Low Filter 100Hz, -5dB

High Filter 10kHz, -6dB

Muting -20dB

Power Requirements

100/120/220/240 V AC 50/60 Hz, 180W (General Export Model)

220V AC 50Hz, 400W (Europe Model)

240V AC 50Hz, 510W (U.K./Aus. Model)

Dimensions (W x H x D)

435 x 120 x 295mm (17 1/4" x 4 3/4" x 11 3/4")

Weight 11.5kg (25.3lbs) net

• Improvements may result in specification or feature changes without notice.

2 ADJUSTMENT LOCATION

1-1 DC BALANCE CHECK

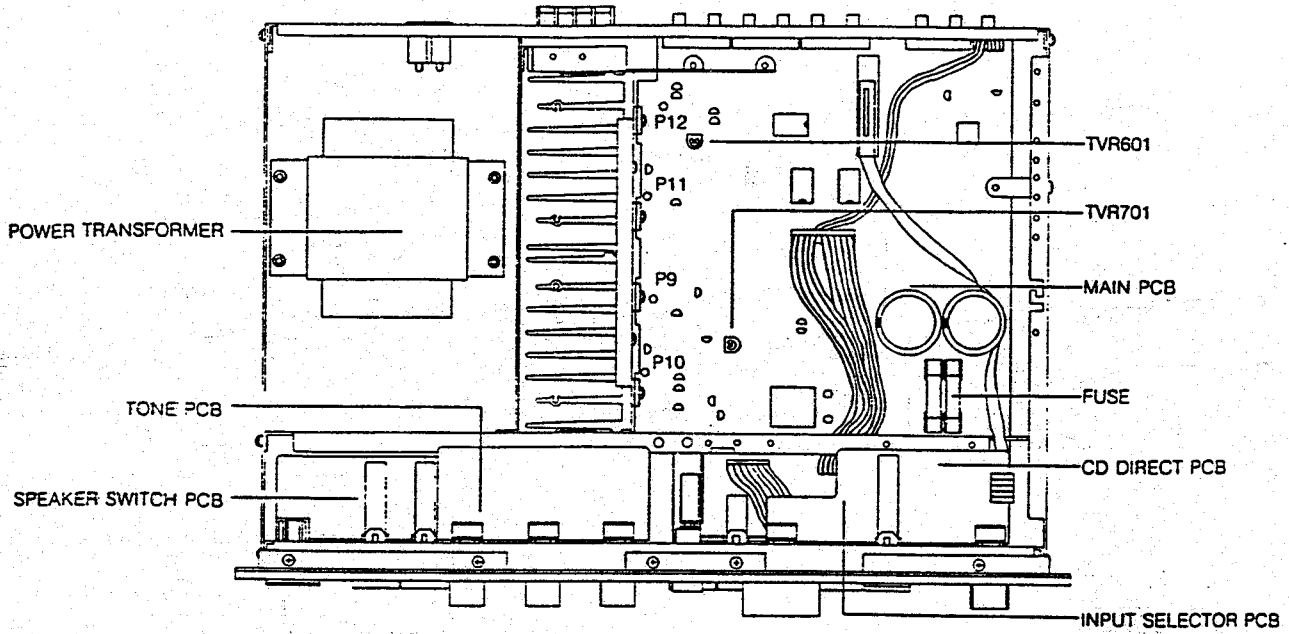
1. Connect the DC voltmeter to SPEAKERS A terminal.
2. Depress POWER switch to ON.
3. Confirm the DC voltmeter indication within 0 V ± 20mV.

1-2 IDLING CURRENT CHECK

1. Connect the DC voltmeter between P9 to P10 and P11 to P12.
2. Confirm the DC voltmeter indication within 15mV when POWER is ON after 10 seconds.
3. If the DC voltmeter indicates over 25mV adjust the TVR 601 for LEFT channel or adjust the TVR 701 for RIGHT channel on the MAIN PCB.
4. After the above procedures, allow 10 minutes for the amplifier to warm up completely.

1-3 REALY OPERATION CHECK

1. Apply 1 kHz/150mV (-16.5dB) to the CD/AUX terminal.
2. Adjust the VOLUME control so that output Voltage is 10V at the SPEAKER terminal.
3. Shortcircuit the SPEAKER terminals between + and - so that the relay RY 1 break immediately.



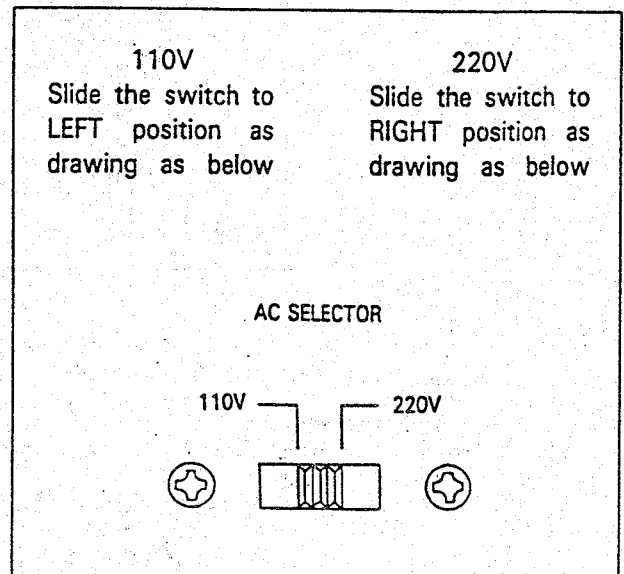
3 VOLTAGE CONVERSION

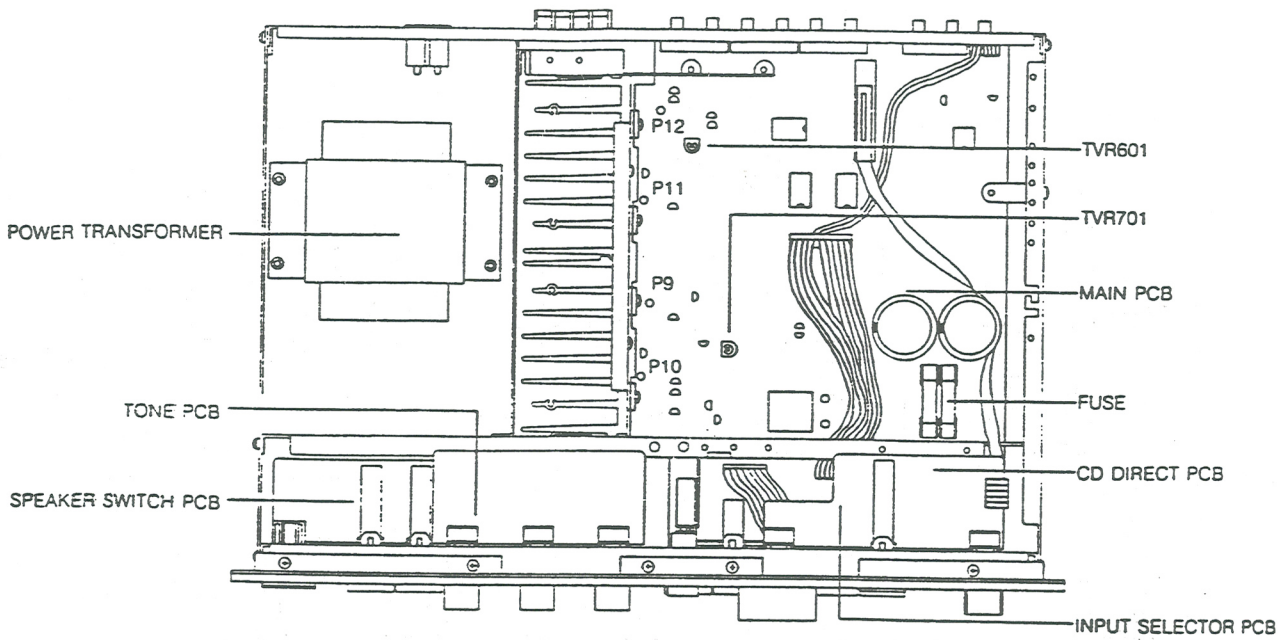
(FOR GENERAL EXPORT MODELS ONLY)

AC VOLTAGE SELECTION

This unit operates on 110 volts or 220 volts AC.

Before connecting the power cord to your AC outlet, make sure that the setting position of this switch matches your line voltage. If not, it must be set to your voltage in accordance with the following direction.



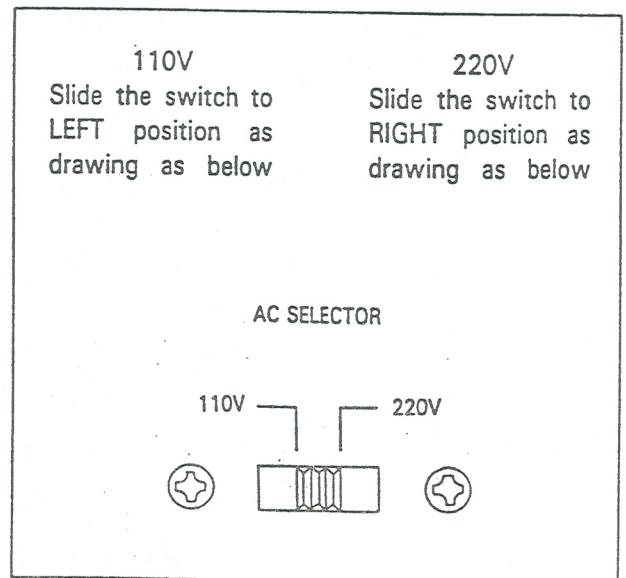


3 VOLTAGE CONVERSION

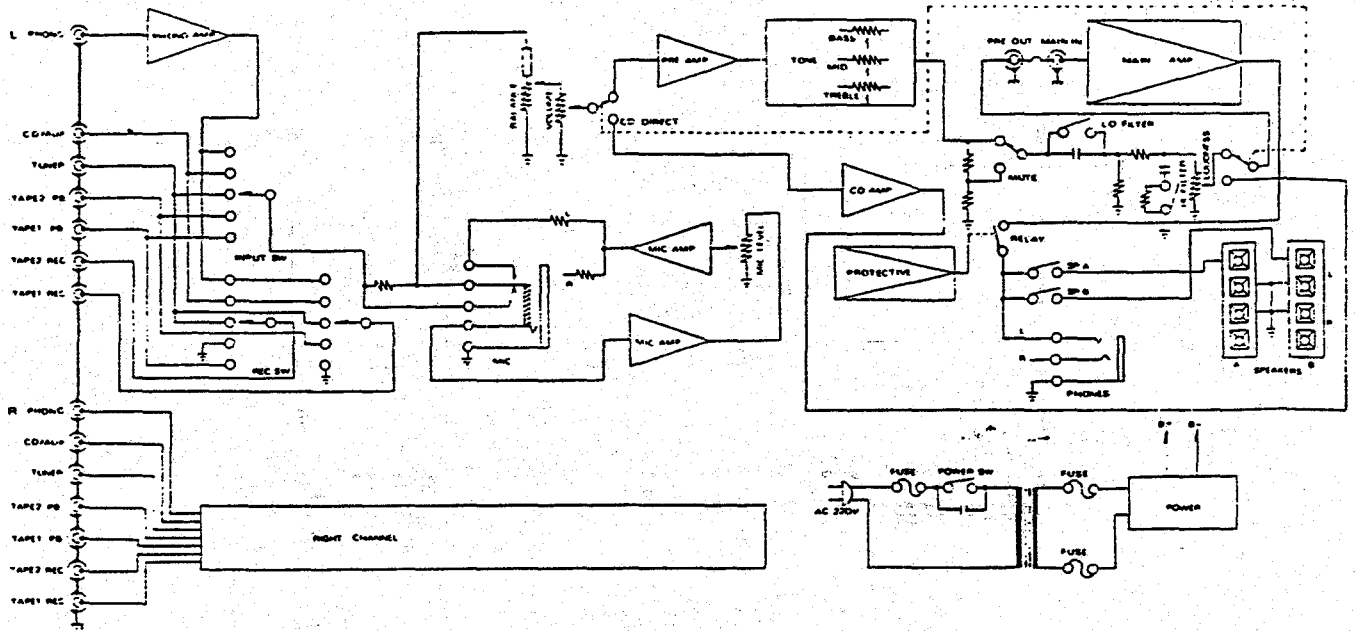
(FOR GENERAL EXPORT MODELS ONLY)

AC VOLTAGE SELECTION

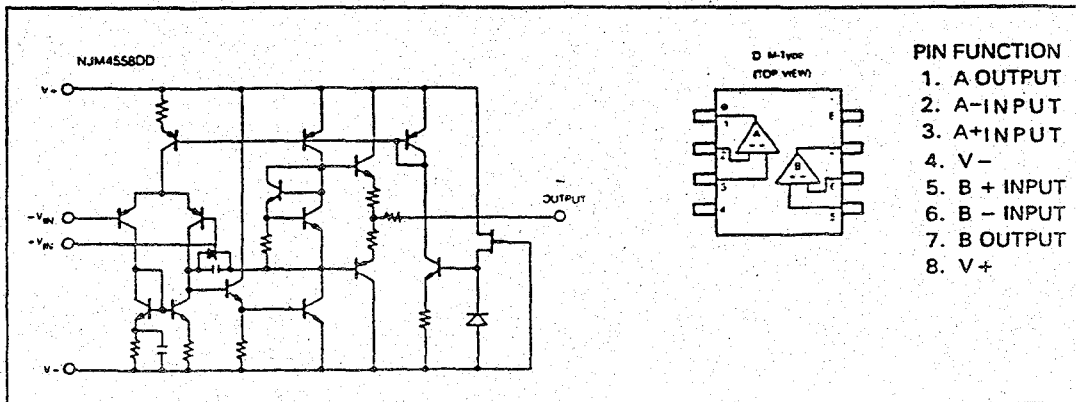
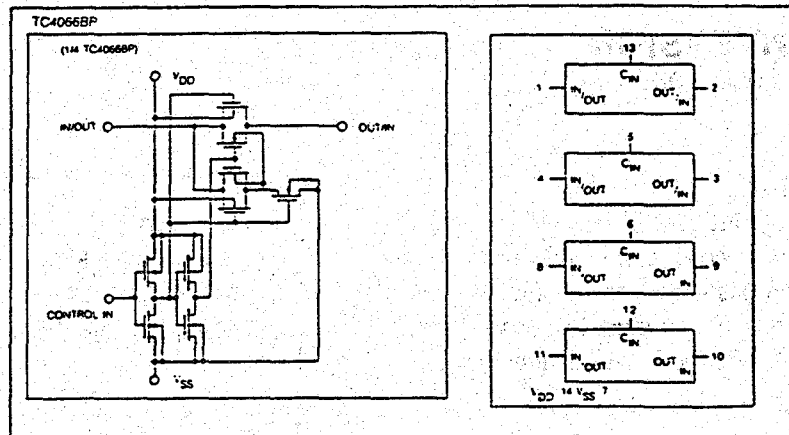
This unit operates on 110 volts or 220 volts AC. Before connecting the power cord to your AC outlet, make sure that the setting position of this switch matches your line voltage. If not, it must be set to your voltage in accordance with the following direction.



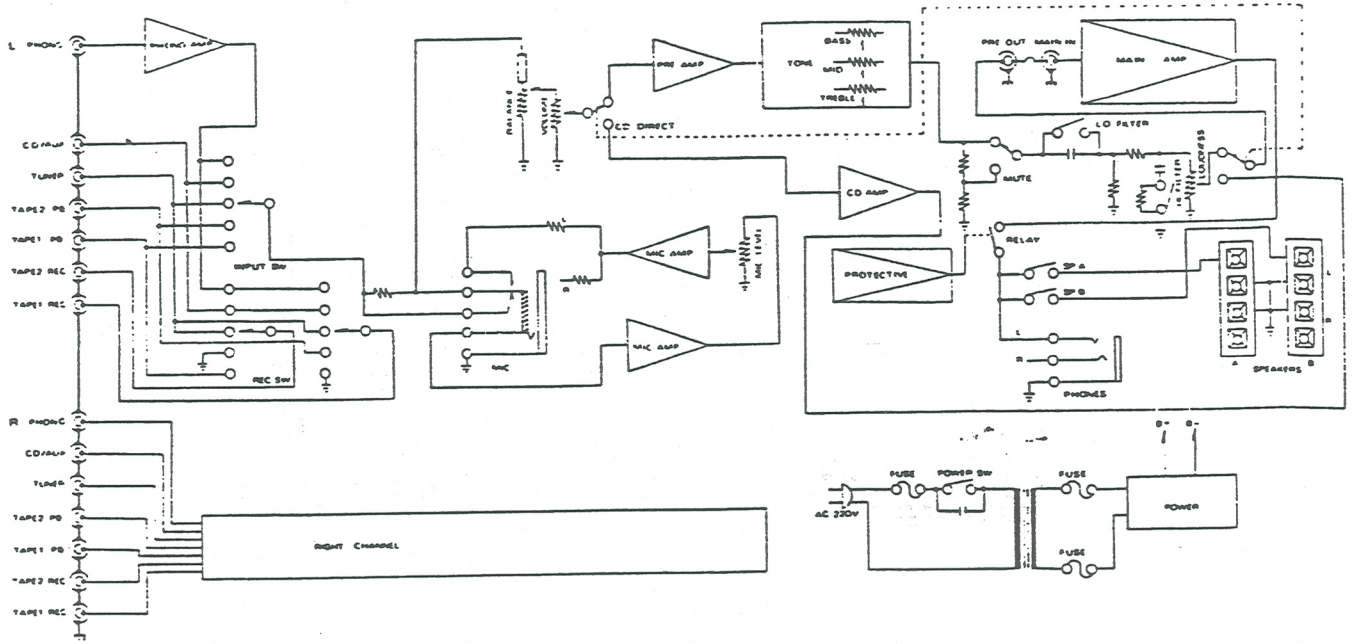
4 BLOCK DIAGRAM



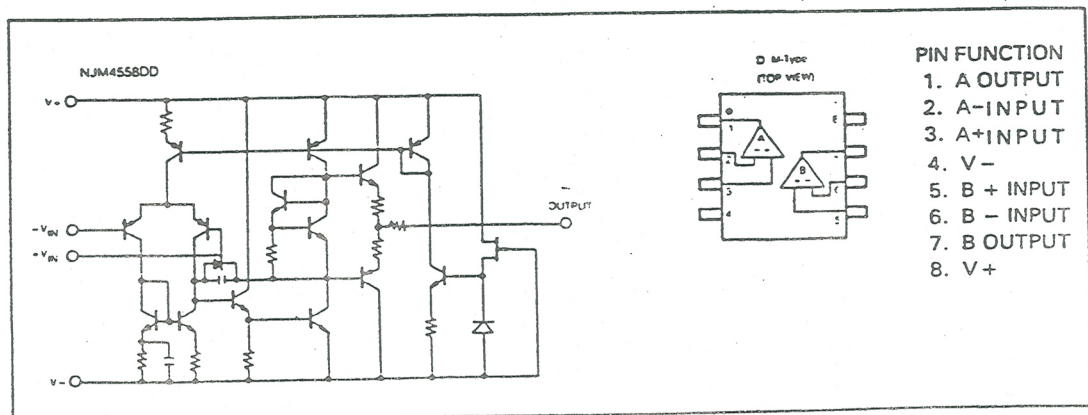
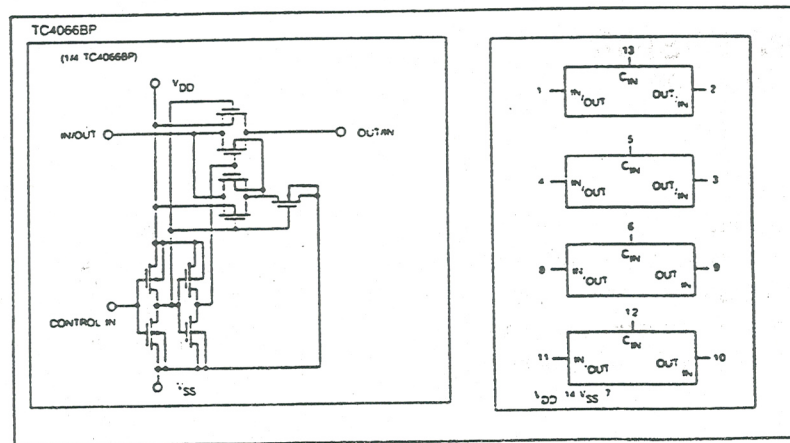
5 IC BLOCK DIAGRAM



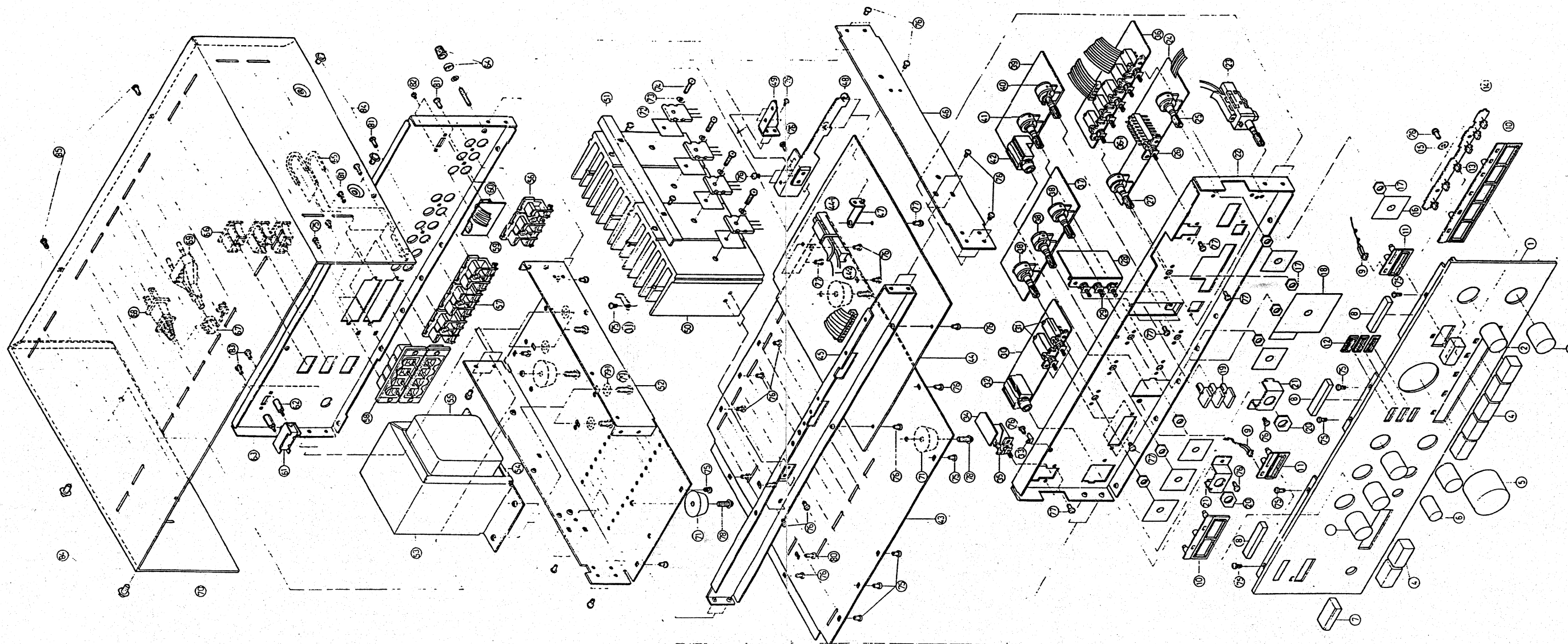
4 BLOCK DIAGRAM



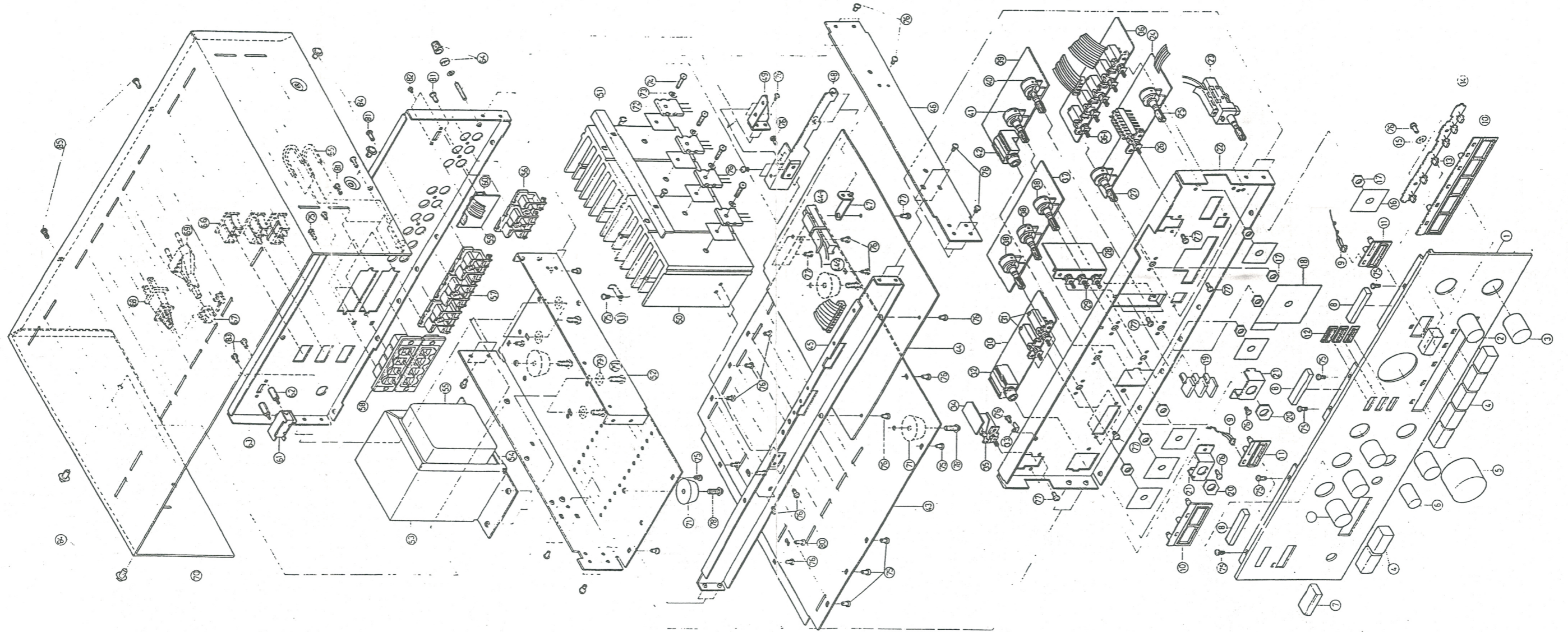
5 IC BLOCK DIAGRAM



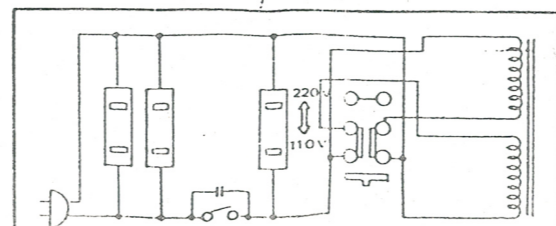
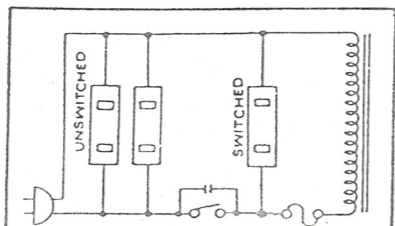
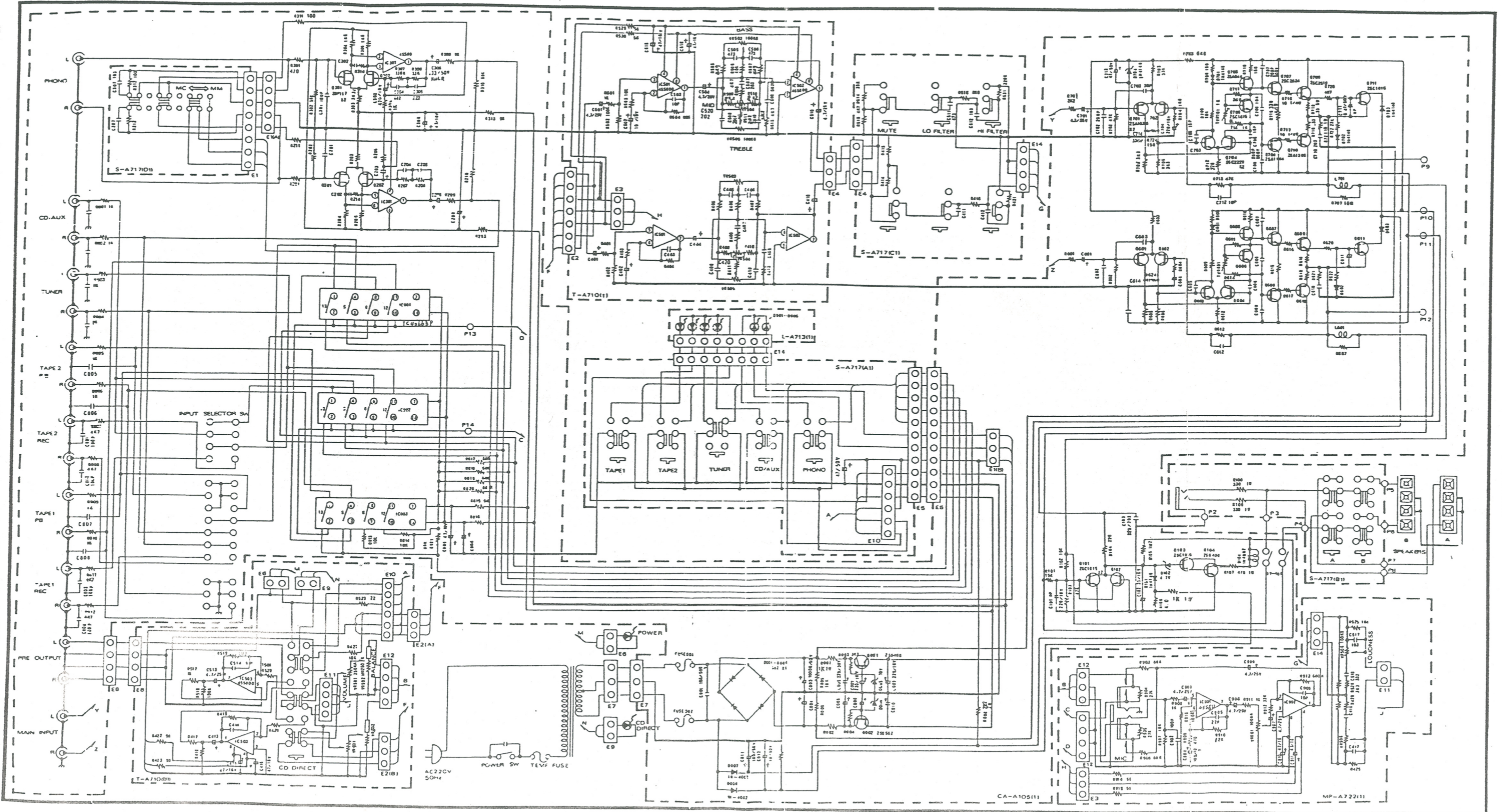
6 EXPLODED VIEW A-X75



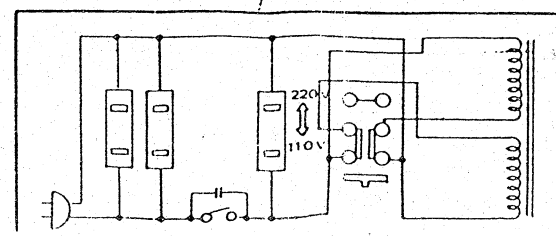
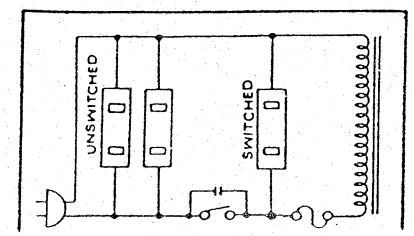
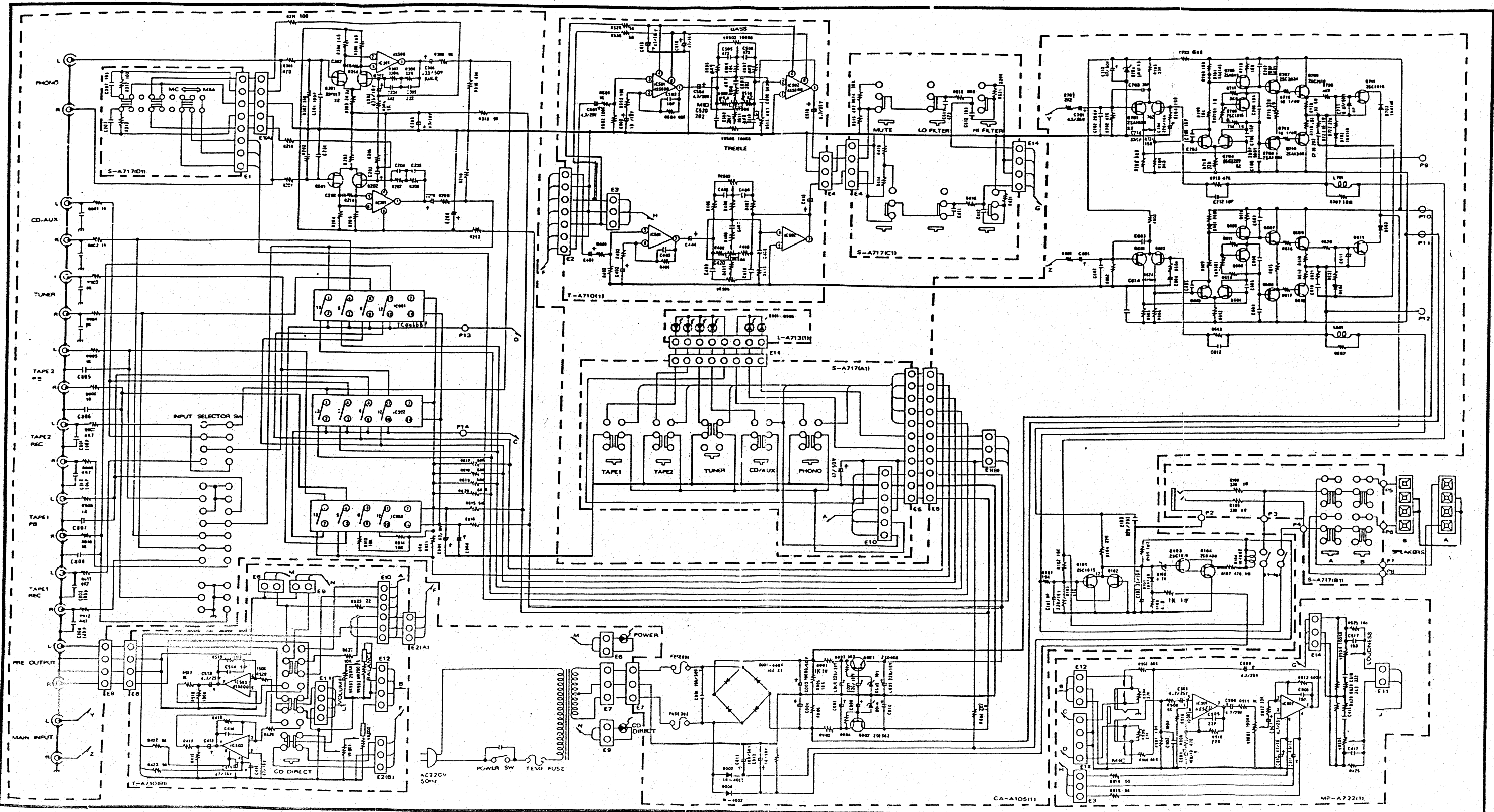
6 EXPLODED VIEW A-X75



7 SCHEMATIC DIAGRAM



7 SCHEMATIC DIAGRAM



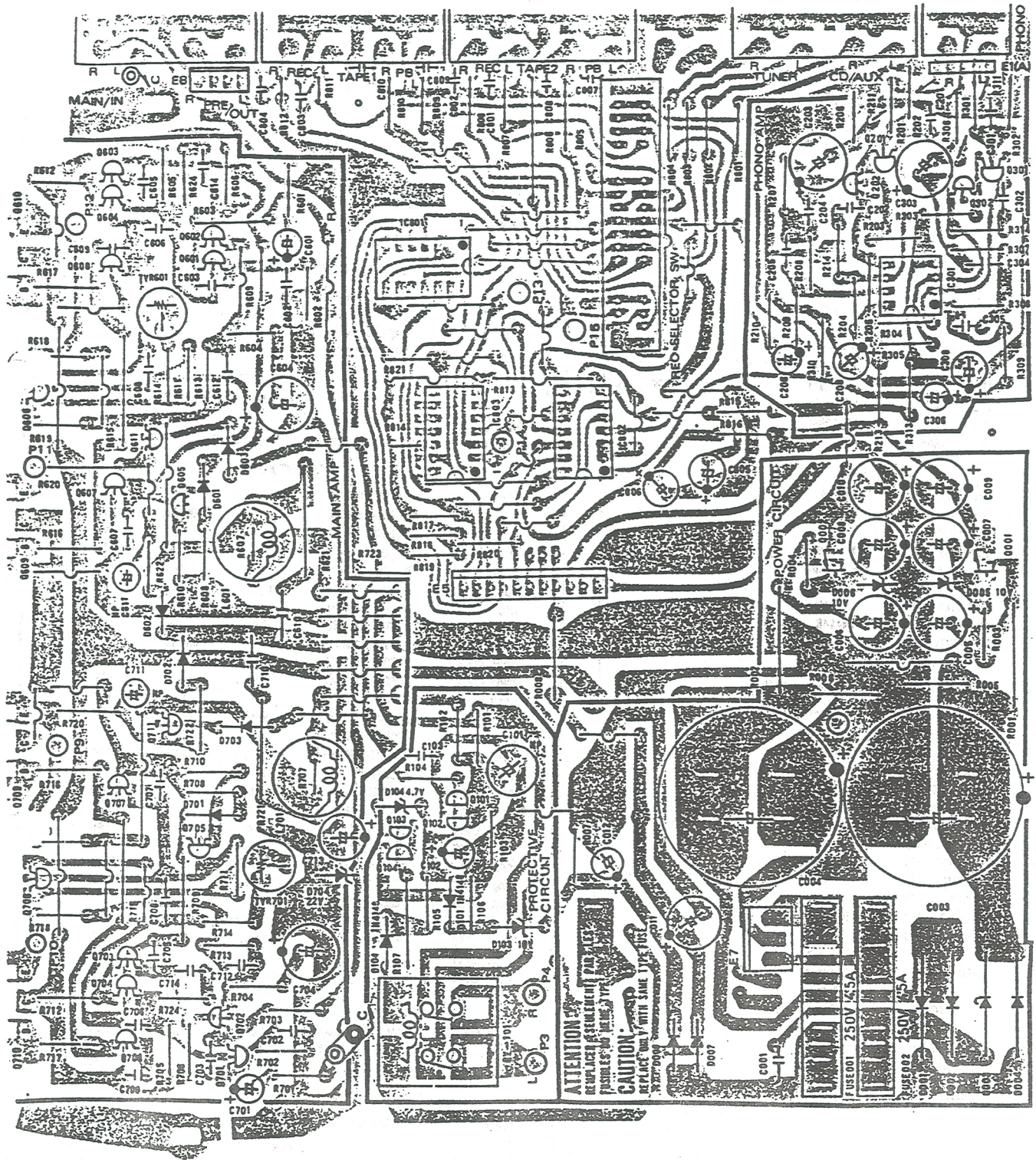
8 EXPLODED VIEW PARTS LIST

REF. NO.	PARTS NO.	DESCRIPTION	REMARKS
1.	PNLAL0187X757	Front Panel L-187	
2.	KNBRT0143***2	Knob KB-143B	
3.	KNBRT0171B**7	Knob KB-171B	
4.	KNBKY0168B**1	Push Knob KB-168B	
5.	KNBRT0169B**9	Knob KB-169B	
6.	KNBRT0141B**9	Knob KB-141B	
7.	KNBKY0167B**8	Push Knob KB-167B	
8.	RUB4000800506	Sponge Cushion 40x8x5	
9.	LED050020RS*7	LED 2x5 Orange Red	
10.	GSKKB0196B**9	Washer for Push Knob A-196	
11.	GSKKB0194B**5	Washer for Push Knob A-194	
12.	GSKKB0195B**7	Washer for Push Knob A-195	
13.	LED050020GS*7	LED 2x5 Green	
14.	PCBL*0A713A22	LED PCB L-A713(A1)	
15.	FBW04010010*9	Insulation Washer 3.2x8x1	
16.	CLT02802805*2	Flet D-0031A	
17.		Nut M7x0.75	
18.	CLT05005005*6	Flet D-0032A	
19.		Push Knob KB-092	
20.		Nut 12Ø	
21.	CHAC*0911X756	Phone Holder C-911	
22.	CHAC*0909X758	Front Chassis C-909	
23.	FLSESA23326*1	Remote SW ESA-23326	
24.	PCBT*0A710B20	PCB T-A710(B2)	
25.	RVR250K25MC20	VR 250KMN x 2x25KC R162B0D218	
26.	PHSSUF12AA580	Switch SPUF12AA58	
27.	RVR100K18A211	VR 250KA x 2x25KC GK162B0D218	
28.	PCBS*0A717C20	SW PCB S-A717(C2)	
29.	PUSSHF31AE415	Push SW SPUF31AE41	
30.	PCBS*0A717B20	Push SW PCB S-A717(B2)	
31.	PHSSUF21CE115	Push SW SPUF21CE11	
32.	EJKHL230603P3	Phone Jack HTJ-064-04D	
33.	SDY54030****1	Weld 3Ø	
34.	PCBS*0A717E*8	Power SW PCB S-717(E)	
35.	PWSES8213**1	Power SW S0L81P(TV3)	
36.	PCBS*0A717A20	Push SW PCB S-A717(A2)	
36-1.	PHSSUF51AE816	Push SW SPUF51AE18	
37.	PCBT*0A710A20	PCB T-A710(A2)	
38.	RVR100K25B27	VR 100KB x 2x25KC K162A0B311	
39.	PCBMP0A722*27	PCB MP-A722(I2)	
40.	RVR100K25A26	VR 100KA x 2x25KC RKDA20B225	
41.	RVR100K25A17	VR 100KA x 2x25KC K16110B001	
42.	MJKHL019009P3	Mic Jack HLJ0316-01-010	
43.	CHAC*0591CA27	Bottom Chassis C-591	
44.	PCBCA0A105*24	Main PCB CA-A105(I2)	
44-1.	SLSESA26142*4	Slide SW ESA-26142	
44-2.	BLTSW30306B*9	Remove Wire ESA-30306B	
45.	CHAC*0560LA81	Aux Holder C-560	
46.	CHAC*0557LA88	Right Chassis C-557	
47.	CHAC*0584LA82	PCB Holder C-584	
48.	CHAC*0576GA24	Heat Sink Holder C-576	
49.	CHAC*0494LA81	Heat Sink Aux Holder C-494	
50.	RAPH*0093***7	Heat Sink H-093A	
51.	CHAC*0498LA89	L Holder C-498	
52.	CHAC*0556LA88	Left Chassis C-556	
53.	CHAC*0626LA83	Transformer Holder C-586A	
54.	CHAC*0626LA83	Transformer Holder C-587	
55.	966037E2***T1	Transformer	EUR
	966037B2***T6	Transformer	EUR UK
	966037A2***T2	Transformer	USA
	966037S2***T8	Transformer	EX
56.	CHAPC02023**5	2P RCA Jack	
57.	RCKYK000904P2	4P RCA Jack	
58.	SPKPT0104LY*4	Speaker Terminal PT-104LY	
59.	PCBS*0A717D20	SW PCB S-A717(D2)	
60.	SLS0062BCPA63	Slide SW P062BC-PA6	
61.	SLS0062710U*5	Slide SW	EX
62.	STNVC100180*1	Copper Post E-161	
63.	CHAC*0910X754	Rear Panel C-910	
64.	SCE0M0503*CE7	Screw Ground E-176	
65.	SDY32E*0037*8	"U" Jump Wire	
66.	ACKS*16519**8	AC Outlet S-16519	CND
	ACLRT0021***2	AC Outlet R7-21	EX
67.	CLPB*0007***5	Bushing B-7	
68.		AC Cord SPT-2 AWG 18x2C	EX
69.		AC Cord SPT-2 AWG 18x2C (POLARZED)	USA, CND
		AC Cord CEE x 2C	EUR

REF. NO.	PARTS NO.	DESCRIPTION	REMARKS
		AC Cord BS 6500	EUR UK
		AC Cord SAA	AUS
70.	CHAC*0559LA83	Upper Cover C-559	
71.	FTP**0024***5	Foot Cushion	
72.	TRSSA1386***1	Transistor 2SA1386	
73.	SPW03200000*0	Spring Washer 3.2Ø	
74.	SCECT3016YH*1	Hexagon Cross Screw CTRS 3x16	
75.	SCECT3006BC*6	Screw CRTS 3x6	
76.	SCECT3006YC*7	Screw CRTS 3x6	
77.	SCECM3006YC*9	Screw CRMS 3x6	
78.	SCECM4012BW*8	Screw CRWMS 4x12	
79.	SCECM4010YS*5	Screw CRMS 4x10	
79-1.	FTW04212016*0	Washer 4Ø x 12x1.6	
80.	SCECT3508YC*9	Screw CRTS 3.5x8	
81.	SCECT0109BCP7	Plastic Screw 1/8x9	
82.	SCECM2604BC*1	Screw 2.6x4	
83.	SCECM3006BC*8	Screw 3x6	
84.	SCECM4008BW*6	Screw CRWMS 4x8	
85.	SCECT3008BC*1	Slotted Head Screw 3x8	
86.	SCECT3008BC*1	Screw CRTS 3x8	
87.	SCECT3508BC*1	Screw CRTS 3.5x8	
88.	ITDA**0X75*35	Owner's Manual	
89.		Styrofoam PF-053	
90.		Inside carton	
91.		Outside carton (Fore in one)	

3 PC BOARD AND PARTS LIST

3.1 MAIN AMP PCB CA-A105(2)

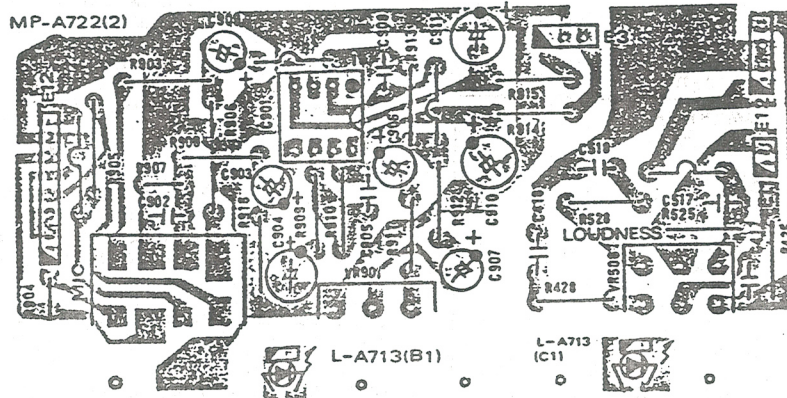
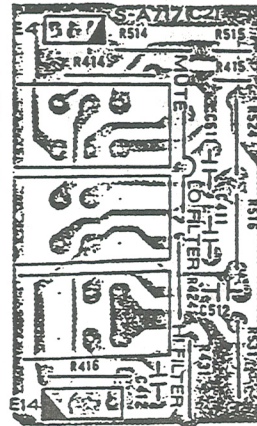
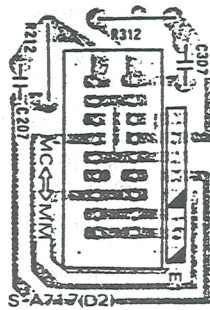
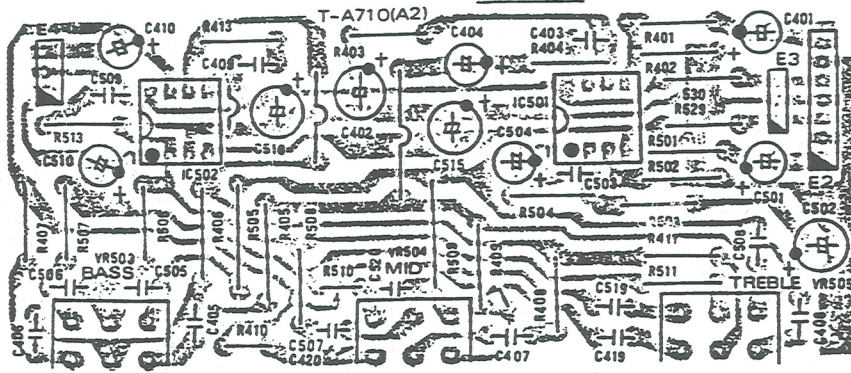


AMP PCB ASSY CA-A105(2)

REF. NO.	PARTS NO.	DESCRIPTION
	PCBCA0A105*24	MAIN AMP PCB ASSY
	PCBCA0A105*24	MAIN AMP PCB
-IC'S-		
IC301	ICCN104558DD6	NJM4558DD 50427380-00
IC801-IC803	KCCCD4066AEG9	TC4066BP
-TRANSISTORS-		
Q001	TRSSD0468C**6	2SD468
Q002	TRSSB0562C**8	2SB562
Q101, Q102	TRSSC1815BL*4	2SC1815GR 52307795-20 od S
Q103	TRSSC1815BL*4	2SC1815BL
Q104	TRSSD0438F**0	2SD438
Q201, Q301	TRSSK0117BL*7	2SK117BL
Q202, Q302	TRSSK0117BL*7	2SK117BL
Q601, Q701	TRSSA1038E**3	2SA1038
Q602, Q702	TRSSA1038E**3	2SA1038
Q603, Q703	TRSSC2229Y**3	2SC2229Y
Q604, Q704	TRSSC2229Y**3	2SC2229Y
Q605, Q705	TRSSA0949Y**4	2SA949Y
Q606, Q706	TRSSC1815BL*1	2SC1815BL
Q607, Q707	TRSSC2824Y**2	2SC2824Y 52307792-00
Q608, Q708	TRSSA1184Y**2	2SA1184Y 51450490-00 (2SA794)
Q609, Q709	TRSSC3519**3	2SC3519
Q610, Q710	TRSSA1386**1	2SA1386
Q611, Q711	TRSSC1815GR*4	2SC1815GR
-DIODES-		
D001-D004	DID**0006A2*9	6A2 x 4
D005, D006	DID010V0W5**2	10V 0.5W
D007, D008	DIDIN4002**2	1N4002
D101	DIDIN4148**8	1N4148
D102	DID04V70W5**9	4.7V 0.5W
D104	DIDIN4002**2	1N4002
D601-D603	DIDIN4148**8	1N4148
D701-D703	DIDIN4148**8	1N4148
D704	DID022V9W5**7	22V 0.5W
-CARBON RESISTORS-		
All resistors are rated ±5% tolerance and 1/4W		
R003, R004	CBR03K30W4TJ4	3K3 ohm
R101, R102	CBR015K0W4TJ0	15K ohm
R103	CBR047K0W4TJ6	47K ohm
R104	CBR220R0W4TJ1	220 ohm
R105	CBR01M20W4TJ9	1M2 ohm
R106	CBR470R0W4TJ1	470 ohm
R201, R301	CBR022R0W4TJ8	22 ohm
R202, R302	CBR056K0W4TJ7	56K ohm
R206, R306	CBR001K0W4TJ7	1K ohm
R209, R309	CBR001K0W4TJ7	1K ohm
R210, R310	CBR068K0W4TJ1	68K ohm
R211, R311	CBR100R0W4TJ4	100 ohm
R213, R313	CBR056R0W4TJ2	56 ohm
R214, R314	CBR150R0W4TJ1	150 ohm
R601, R701	CBR02K20W4TJ5	2K2 ohm
R602, R702	CBR047K0W4TJ6	47K ohm
R603, R703	CBR033K0W4TJ2	33K ohm
R604, R704	CBR01K50W5TJ0	1K5 ohm
R605, R705	CBR03K30W4TJ4	3K3 ohm
R606, R706	CBR03K30W4TJ4	3K3 ohm
R608, R708	CBR150R0W4TJ1	150 ohm
R609, R709	CBR010K0W4TJ8	10K ohm
R610, R710	CBR150R0W4TJ1	150 ohm
R611, R711	CBR03K90W4TJ6	3K9 ohm
R612, R712	CBR100R9W4TJ4	100 ohm
R613, R713	CBR047K0W4TJ6	47K ohm
R614, R714	CBR001K0W4TJ7	1K ohm
R615, R715	CBR330R0W3TJ2	330 ohm
R616, R716	CBR010R0W4TJ3	10 ohm
R617, R717	CBR010R0W4TJ3	10 ohm
R620, R720	CBR04K70W4TJ4	4K7 ohm
R622, R722	CBR022K0W4TJ2	22K ohm
R723	CBR06K80W4TJ9	6K8 ohm
R624, R724	CBR150R0W4TJ1	150 ohm
R801-R806	CBR001K0W4TJ7	1K ohm
R807, R808	CBR04K70W4TJ4	4K7 ohm
R809, R810	CBR001K0W4TJ7	1K ohm
R815, R816	CBR470R0W4TJ1	56 ohm

REF. NO.	PARTS NO.	DESCRIPTION
R817-R821	CBR068K0W4TJ1	68K ohm
All resistors are rated ±5% tolerance and 1/4W F tape		
R607, R707	CBR010R0W4FJ3	10 ohm
R811, R812	CBR04K70W4FJ1	4K7 ohm
R813, R814	CBR068K0W4FJ1	10K ohm
All resistors are rated ±5% tolerance and 1/2W		
R005, R006	CBR010K0W2TJ6	10K ohm
-METAL FILM RESISTORS-		
All resistors are rated ±5% tolerance and 1/4W		
R203, R303	PMR03K30W4TG5	3K3 ohm
R204, R304	PMR01K50W4TG1	1K5 ohm
R205, R305	PMR01K50W4TG1	1K5 ohm
R208, R308	PMR33K0W4TG9	33K ohm
All resistors are rated ±5% tolerance and 1W or 2W		
R001, R002	MTR001K01WTJ8	1K ohm 1W
R107	MTR470R01WTJ2	470 ohm 1W
R621, R721	MTR010R01WTJ4	10 ohm 1W
R008	MTR02K20ZWTJ8	2K2 ohm 2W
-CEMENT FILLED FIXED RESISTORS-		
All resistors are rated ±5% tolerance and 5W		
R618, R718	CMR0R3305WTE9	0.33 ohm 51852010
R619, R719	CMR0R3305WTE9	0.33 ohm
-CAPACITORS-		
C001	CRC0P0101KRZ1	Ceramic 0.01u 500V
C003, C004	ELC010K050R34	Elec. 10000u 50V
C005, C006	ELC220U025R38	Elec. 220u 35V
C007-C010	ELC220U016R37	Elec. 220u 16V
C011	ELC100U050R31	Elec. 100u 50V
C012	ELC010U050R54	Elec. 10u 50V KULR
C101	ELC220U016R01	Elec. 220u 16V NP
C102	ELC033U010R38	Elec. 33u 10V
C103	PECU022050RK3	Mylar 0.022K
C201, C301	CRC0100050RK5	Ceramic 100P 50V
C202, C302	CRC0330050RK1	Ceramic 330P 50V
C203, C303	ELC470U010R37	Elec. 470u 10V
C204, C304	PEC2000050RJ5	Mylar 0.002u 50V
C205, C305	PECU022050RK3	Mylar 0.0068u 50V
C206, C306	ELC0U33050R55	Elec. 0.33u 50V KULR
C208, C308	ELC047U016R37	Elec. 47u 16V
C601, C701	ELC04U7025R35	Elec. 4.7u 25V
C602, C702	CRC0200500RK5	Ceramic 200P 50V
C604, C605	ELC220U016R37	Elec. 220u 16V
C605, C705	CRC0015500RK7	Ceramic 15P 500V
C606, C706	CRC0015500RK7	Ceramic 15P 500V
C607, C707	CRC0200500RK5	Ceramic 200P 500V
C608, C708	PEC00U1050RK5	Mylar 0.1u 50V
C609, C709	CRC0200500RK5	Ceramic 200P 500V
C610, C710	PECU022050RK3	Mylar 0.022u 50V
C611, C711	ELC0U47050R09	Elec. 0.47u 50V NP
C612, C712	CRC0010500RK9	Ceramic 10P 50V
C713	ELC100U025R30	Elec. 100u 25V
C614, C714	CRC0330500RK4	Ceramic 330P 50P
C801-C804	CRC0100050RK5	Ceramic 100P 50V
C805, C806	ELC047U016R37	Elec. 47u 16V
C807-C810	CRC0100050RK5	Ceramic 100P 50V
-VARIABLE RESISTORS-		
TVR601	TVR011K063HM1	60 H Type 1K ohm
-COILS-		
L601, L701	CIL1851000186	18 1/2T
-MISCELLANEOUS-		
	RCKYK00090402	4P RCA Jack
	CHAPC02023**5	2P RCA Jack
	CNT**514311P1	Wafar Connector 11P
RY-101	RLY24V5A2P2C1	Relay
	SLSESA26142*4	Slide Switch
	SDY43501119*8	Pin 1 x 1 x 9
	FUHFH0003**1	Fuse Holder
	RAPH*0043**3	Heat Sink

- 3.2 TONE AMP PCB T-A710(A2)
- MIC AMP PCB MP-A722(2)
- MM/MC SWITCH PCB S-A717(D2)
- SWITCH PCB S-A717(C2)
- LED PCB L-A713(B1, C1)



TONE AMP PCB ASSY T-A710(A2)

REF. NO.	PARTS NO.	DESCRIPTION
	PCBT*0A710A20	TONE AMP PCB ASSY
	PCBT*0A710A20	TONE AMP PCB
-CARBON RESISTORS-		
All resistors are rated ± 5% tolerance and 1/4W		
R401, R501	CBRO01K0W4TJ7	1K ohm
R402, R502	CBR100K0W4TJ9	100K ohm
R403, R503	CBRO10K0W4TJ8	10K ohm
R404, R504	CBRO82K0W4TJ5	82K ohm
R405, R505	CBRO4K70W4TJ4	4K7 ohm
R406, R506	CBRO10K0W4TJ8	10K ohm
R407, R507	CBRO4K70W4TJ4	4K7 ohm
R408, R508	CBRO4K79W4TJ7	4K7 ohm
R409, R509	CBRO08K0W4TJ8	8K2 ohm
R410, R510	CBRO8K20W4FJ8	8K2 ohm F Type
R411, R511	CBRO4K70W4TJ4	4K7 ohm
R529, R530	CBRO56R0W4TJ2	56 ohm
R408-1, R508-1	CBRO2K20W4FJ5	2K2 ohm F Type
R419, R519	CBRO2K20W4FJ5	2K2 ohm F Type
-CAPACITORS-		
C401, C501	ELC04U7025R35	Elec. 4.7u 25V
C402, C502	ELC010U016R39	Elec. 10u 16V
C403, C503	CRC00100050R4	Ceramic 10P 50V
C404, C504	ELC04U7025R35	Elec. 4.7u 25V
C405, C505	PECU047050R1	Mylar 0.047u 50V
C406, C506	PECU047050R1	Mylar 0.047u 50V
C407, C507	PECU022050R4	Mylar 0.022u 50V
C409, C509	PEC4700050R16	Mylar 0.005u 50V
C410, C510	ELC04U7025R35	Elec. 4.7u 25V
C420, C520	PEC2000050R15	Mylar 0.002u 50V
C515, C516	ELC047U016R37	Elec. 47u 16V
C411, C511	PEC3300050R18	Mylar 0.0033u 50V
-IC'S-		
IC501, IC502	ICCNJ04558DD6	NJM4558DD
-VARIABLE RESISTORS-		
VR503-VR505	RVR100K25BE27	100KB x 2 x 25KC
-MISCELLANEOUS-		
	PRL17002403P7	Connector 3P
	PRL15002403P6	Connector 3P

MIC AMP PCB ASSY MP-A722 (2)

REF. NO.	PARTS NO.	DESCRIPTION
	PCBMPOA722*27	MIC AMP PCB ASSY
	PCBMPOA722*27	MIC AMP PCB
-IC'S-		
IC901	ICCNJ04558DD6	NJM4558DD
-CARBON RESISTORS-		
All resistors are rated ± 5% tolerance and 1/4W		
R425, R525	CBRO18K0W4TJ4	18K ohm
R428, R528	CBRO30K0W4TJ4	30K ohm
R903	CBRO68K0W4TJ1	68K ohm
R904	CBRO27K0W4FJ5	27K ohm F Type
R905	CBRO27K0W4TJ5	27K ohm
R906	CBRO68K0W4TJ1	68K ohm
R907	CBRO10K0W4FJ8	10K ohm
R908	CBRO01K0W4TJ7	1K ohm
R909	CBR470R0W4TJ1	470K ohm
R910	CBRO12K0W4TJ7	12K ohm
R911	CBRO01K0W4TJ7	1K ohm
R912	CBRO33K0W4TJ2	33K ohm
R913	CBRO68K0W4TJ4	68K ohm
R914, R915	CBRO56R0W4TJ2	56 ohm
R916	CBR100K0W4TJ9	100K ohm
-CAPACITORS-		
C417, C517	PECU01050R18	Mylar 0.01u 50V
C418, C518	PECU047050R1	Mylar 0.047u 50V
C902	CRC0100050R5	Ceramic 100P 50V
C903	ELC04U7025R35	Elec. 4.7u 25V
C904	ELC100U010R34	Elec. 100u 10V
C905	CRC0022050R6	Ceramic 22P 50V
C906, C907	ELC04U7025R35	Elec. 4.7u 25V
C908	CRC0015050R2	Ceramic 15P 50V
C909	ELC04U7025R35	Elec. 4.7u 25V
C910, C911	ELC047U016R37	Elec. 47u 16V
-VARIABLE RESISTOR-		
VR506	RVR100K25AT26	100KA x 2 x 25KC
VR501	RVR100K25AT17	100KA x 25KC
-MISCELLANEOUS-		
	MJKHL019009P3	Mic Jack

SWITCH PCB ASSY S-A717(C2)

REF. NO.	PARTS NO.	DESCRIPTION
	PCBS*0A717C20	SWITCH PCB ASSY
	PCBS*0A717C20	SWITCH PCB
-CARBON RESISTORS-		
All resistors are rated ± 5% tolerance and 1/4W		
R414, R514	CBRO39K0W4TJ1	39K ohm
R415, R515	CBRO4K70W4TJ4	4K7 ohm
R416, R516	CBRO3K90W4TJ6	3K9
R431, R531	CBR220K0W4TJ6	220K
-CAPACITORS-		
C411, C511	PECU047050R1	Mylar 0.047u 50V
C412, C512	PEC001050R18	Mylar 0.01u 50V
-MISCELLANEOUS-		
	PHSSUF31AE415	Push Switch
	PRL15002403P6	Connector

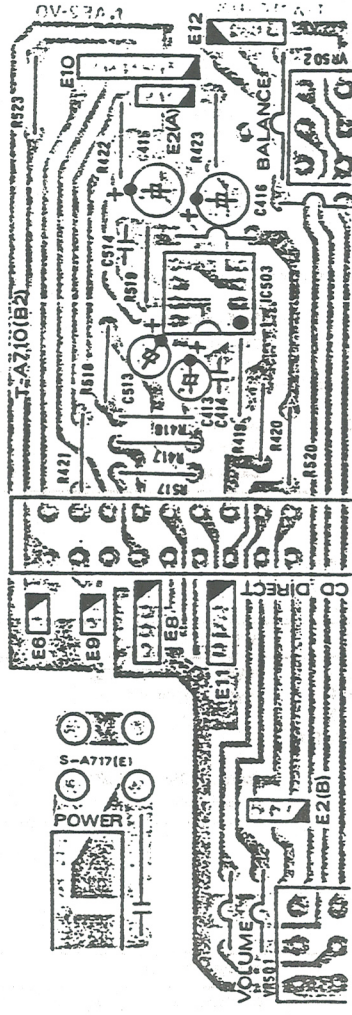
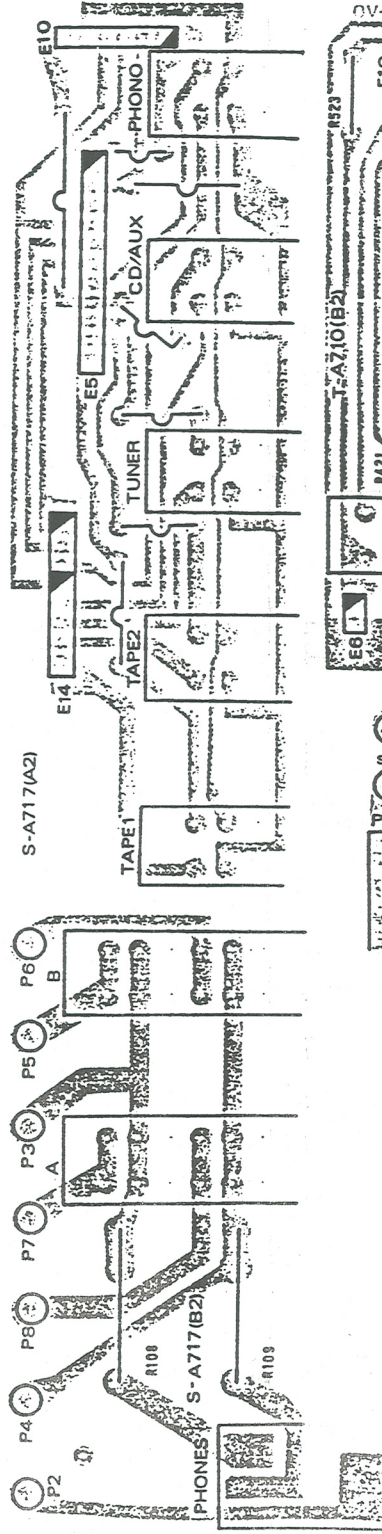
MM/MC SWITCH PCB ASSY S-A717(D2)

REF. NO.	PARTS NO.	DESCRIPTION
	PCBS*0A717D20	MM/MC SWITCH PCB ASSY
	PCBS*0A717D20	MM/MC SWITCH PCB
-CARBON RESISTORS-		
R212, R312	CBR100R0W4TJ4	100 ohm
-MISCELLANEOUS-		
C207, C307	PECU01050R18	Mylar 0.01u 50V
	SLSP062BCPA63	Slide Switch
	PRL17002403P7	Connector
	PRL10002405P9	Connector

LED PCB ASSY L-A713(B1, C1)

REF. NO.	PARTS NO.	DESCRIPTION
	PCBL*0A713B13	LED PCB ASSY
	PCBL*0A713B13	LED PCB
-MISCELLANEOUS-		
	LED050020RS*7	LED 2 x 5 Red
	GSKKB0194B**5	Washer
	SCECT2606YC*4	Screw CRTS 2.6 x 6

- 1.3 PUSH SW PCB S-A717(B2)
- CD AMP PCB T-A710(B2)
- POWER SWITCH PCB S-A717(E)
- FUNCTION SWITCH PCB S-A717(A2)
- FUNCTION LED PCB L-A713(A1)



CD AMP PCB ASSY T-A710(B2)

REF. NO.	PARTS NO.	DESCRIPTION
	PCBT*0A710B20	CD AMP PCB ASSY
	PCBT*0A710B20	CD AMP PCB
-IC'S-		
IC503	ICCNJ04558DD6	NJNM4558DD
-CARBON RESISTORS-		
R417, R517	CBR001K0W4TJ7	1K ohm
R418, R518	CBR100K0W4TJ9	100K ohm
R419, R519	CBR390K0W4TJ9	390K ohm
R420, R520	CBR047K0W4TJ6	47K ohm
R421	CBR010K0W4TJ8	10K ohm
R422, R423	CBR056R0W4TJ2	56 ohm
R523	CBR022R0W4TJ8	22 ohm
-CAPACITORS-		
C413, C513	ELC04U7025R35	Elec. 4.7u 25V
C414, C415	CRCO010050RK4	Ceramic 10P 50V
C415, C416	ELC047U016R37	Elec. 47u 16V
-VARIABLE RESISTORS-		
VR105	RVR100K18AZ11	250KA x 2 x 25KC
VR502	RVR250K25MC20	250KMN x 2 x 25KC
-MISCELLANEOUS-		
	PHSSUF12AA580	Push Switch
	SDY43SQ1119*8	Pin 1 x 1 x 9
	PRL17002606P0	Connector

POWER SWITCH PCB ASSY S-A717(E)

REF. NO.	PARTS NO.	DESCRIPTION
	PCBS*0A717E*8	POWER SWITCH PCB ASSY
	PCBS*0A717E*8	POWER SWITCH PCB
-MISCELLANEOUS-		
	CRCOPO101KR21	Ceramic 0.01u 1000V
	PWSES88213**1	Power Switch

FUNCTION SWITCH PCB ASSY S-A717(A2)

REF. NO.	PARTS NO.	DESCRIPTION
	PCBS*0A717A20	FUNCTION SWITCH PCB ASSY
	PCBS*0A717A20	FUNCTION SWITCH PCB
-MISCELLANEOUS-		
	ELC047U050R39	Elec. 47u 50V
	PHSSUF51AE186	Push Switch
	CNT**549408P5	Wafer Connector
	PRL17002405P7	Connector
	PRL17002606P0	Connector

SWITCH PCB ASSY S-A717(B2)

REF. NO.	PARTS NO.	DESCRIPTION
	PCBS*0A717B20	SWITCH PCB ASSY
	PCBS*0A717B20	SWITCH PCB
-METAL FILM RESISTORS-		
R108, R109	MTR330R01WTJ4	330 ohm
-MISCELLANEOUS-		
	PHSSUF21CE115	Push Switch
	EJKHL230603P3	Jack Phones

FUNCTION LED PCB ASSY L-A713 (A1)

REF. NO.	PARTS NO.	DESCRIPTION
	PCBL*0A713A22	FUNCTION LED PCB ASSY
	PCBL*0A713A22	FUNCTION LED PCB
-DIODES-		
D901-D906	LED050020GS*7	LED 2 x 5 Green
-MISCELLANEOUS-		
	PRL15002403P6	Connector
	PRL13002405P5	Connector
	GSKKB01968**9	Washer
	SCECT2606YC*4	Screw CRTS 2.6 x 6