

TEAC



SERVICE MANUAL

T-H300DAB

DAB/AM/FM Stereo Tuner

DAB
Digital Audio Broadcasting

For U.K.

CONTENTS

1 SPECIFICATIONS	2
2 EXPLODED VIEWS AND PARTS LIST	3
3 PC BOARDS AND PARTS LIST	5
4 INCLUDED ACCESSORIES	7

NOTES

- PC boards shown are viewed from parts side.
- The parts with no reference number or no parts number in the exploded views are not supplied.
- As regards the resistors and capacitors, refer to the circuit diagrams contained in this manual.
- \triangle Parts marked with this sign are safety critical components. They must be replaced with identical components - refer to the appropriate parts list and ensure exact replacement.

1 SPECIFICATIONS

FM Tuner

Tuning range87.50 – 108.00 MHz (50 kHz steps)
 Signal-to-Noise ratio65 dB (Mono)
 60 dB (Stereo)

AM Tuner

Tuning range522 – 1620 kHz (9 kHz steps)
 Signal-to-Noise ratio35 dB

DAB Tuner

Tuning rangeBand 3, 174 MHz – 240 MHz
 Input50 ohms, nominal
 Max signal -3 dBm typ
 Sensitivity -96 dBm typ
 Adjacent Channel Rejection35 dB typ
 Digital output24 bit/48 kHz resolution

Audio outputStereo, 2.5 Vp-p

General

Power requirements230 V AC, 50Hz
 Power consumption9 W (STANDBY: 3 W)
 Dimensions (W x H x D)215 x 85 x 270 mm
 Weight2.4 kg
 Operating temperature0 °C – 50 °C

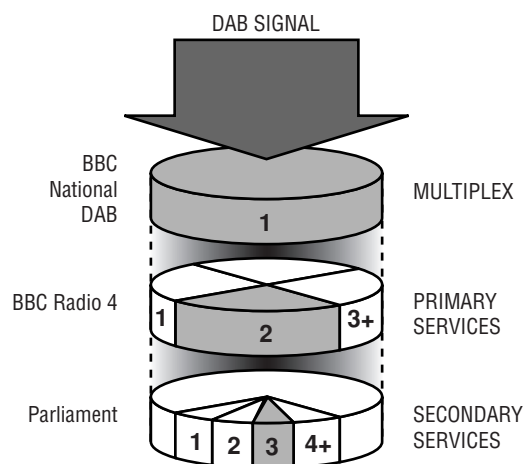
AccessoriesAM loop antenna x 1
 FM antenna x 1
 DAB antenna x 1
 RCA pin cable x 1
 Remote control unit x 1
 Batteries (AAA, R03, UM-4) x 2

- Design and specifications are subject to change without notice.

About DAB

With this unit you can receive and listen to Digital Audio Broadcast (DAB) programmes. DAB uses digital, not analogue signals, resulting in near CD-quality audio with virtually interference-free reception. Along with superior quality audio, DAB can also deliver additional audio channels and text. In the future, computer data and images are also possible.

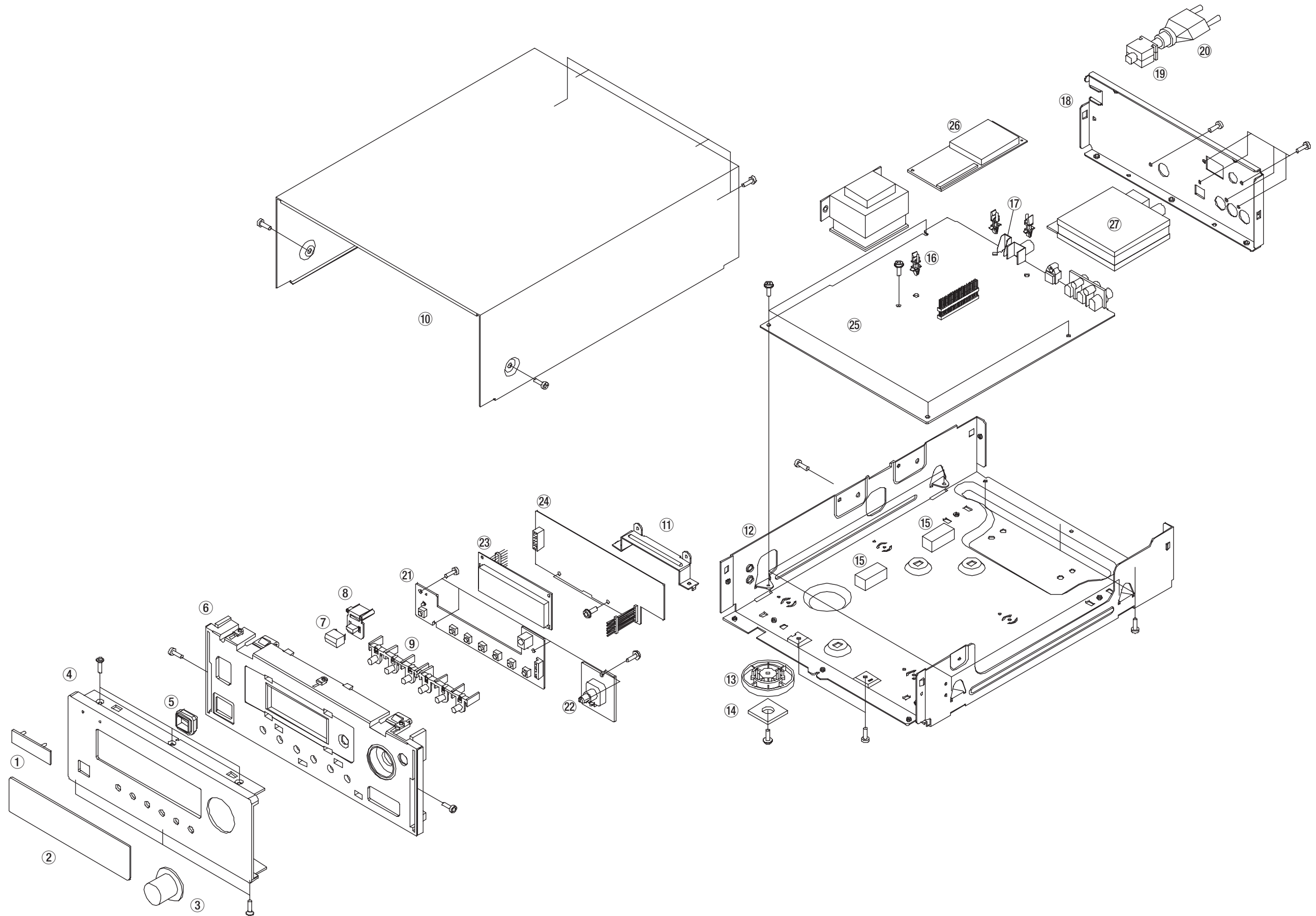
Digital radio is broadcast as groups of data called ensembles or multiplexes. Each multiplex can contain a number of stations (services) and each station contains a primary service and can contain secondary services as illustrated in the following diagram.



Each multiplex is transmitted in a set frequency range and received by this unit for decoding. You can receive multiplexes broadcast in the 174–240 MHz frequency band and store the services in each multiplex for you to access. The number of multiplexes you receive depend on your location. Channels used in the UK are in the range 10A to 12D.

Multiplexes and stations have labels (names) that are used to identify them. Instead of needing to know the particular frequency of your favourite broadcast, you can simply select the station name. Secondary services and additional data such as text or multiplex info are also available.

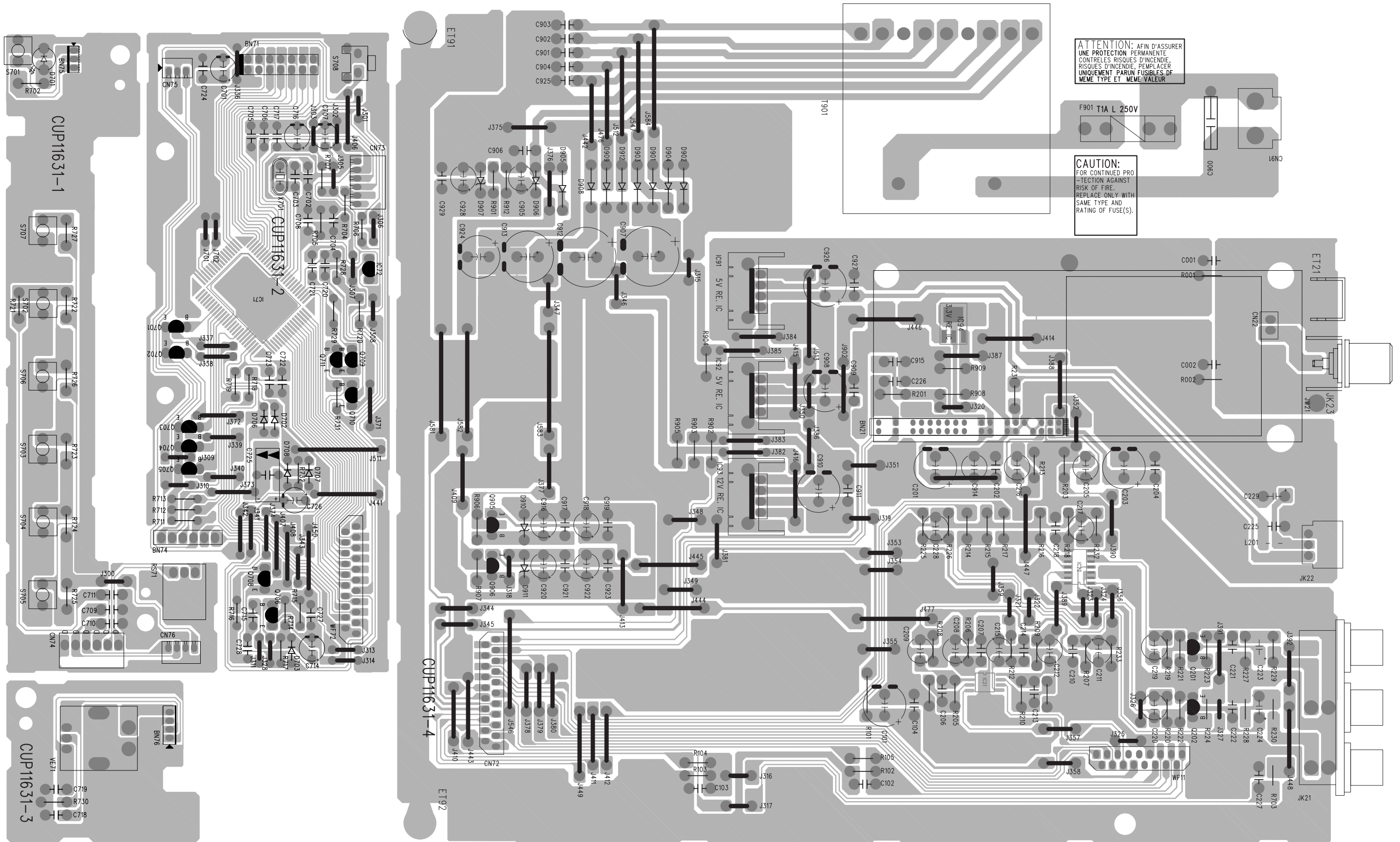
2 EXPLODED VIEWS AND PARTS LIST



EXPLODED VIEW LIST

REF. NO.	PARTS NO.	DESCRIPTION	REMARKS
1	KGB1A047	BADGE	
2	CGU1A154Y	WINDOW	
3	KGX1A217ZA	VOLUME CAP ASSY(B)	
4	KKM2A072ZC11	PANEL, FRONT	
5	CGL1A133	INDICATOR, STAND BY	
6	CGW1A369M9K80	PANEL, SUB	
7	CBT1A495M9K79	CAP, STAND BY	
8	CBT1A483	KNOB, STAND BY	
9	CBT1A492M9K79	KNOB, TACT	
10	CKC1B089S21	CABINET, TOP	
11	CMD1A505	BRACKET, PCB	
12	CUA1A158	CHASSIS, BOTTOM	
13	CKL2A055M9K63	FOOT	
14	KHG1A050Y	CUSHION, FOOT	
15	CHG1A236	CUSHION	
16	CMH1A226	SUPPORT, PCB	
17	CMD1A387	BRACKET, PCB	
18	CKF1A269Z	PANEL, REAR	
19	△ KHR1A028	BUSHING, AC CORD	
20	△ CJA2E045ZA	CORD, POWER	
21	COP11631B	PCB ASSY, TEAC DAB	
22	COP11631B	PCB ASSY, TEAC DAB	
23	HFL16T202DA1E	VFD MODULE	
24	COP11631B	PCB ASSY, TEAC DAB	
25	COP11631B	PCB ASSY, TEAC DAB	
26	HNVFS2020VENICE	DAB MODULE	
27	CNVMB114MA18L	TUNER MODULE (EUR)	
F901	△ KBA2C1000TLEZ	FUSE	
FIP1	KJP14TT152ZY	PIN HEADER	
	CWC1C4A21B120B	CARD CABLE, 21P	
	CWC1C4A17B120B	CARD CABLE, 17P	

3 PC BOARDS AND PARTS LIST



TEAC DAB PCB ASSY (GATHER)

REF. NO.	PARTS NO.	DESCRIPTION
	COP11631B	PCB ASSY, TEAC DAB
	CUP11631Z	PCB, TEAC DAB
	HNVFS2020VENICE	DAB MODULE
BN21	CJP44TT153ZY	PIN, HEADER
BN71	KJP14HA151ZY	PIN, SOCKET
BN74	KJP06TT159ZY	PIN, HEADER
C725	BCES0HD104	C, GOLD 5.5V 0.1
C900	△ BCQE2E104KDE	C, LINE ACROSS
C907	△ HCEA1CH222E	C, ELECT 16V 2200UF
C912	△ HCEA1EH222E	C, ELECT 25V 2200UF
C913	△ HCEA1CH102E	C, ELECT 16V 1000UF
C924	△ HCEA1CH471T	C, ELECT 16V 470UF
CN22	KJP02TT155ZY	PIN, HEADER
CN72	KJP21GA115ZG	WAFER, CARD CABLE
CN73	KJP06GB46ZM	WAFER
CN74	KJP06HA37ZM	WAFER
CN75	KJP03GB46ZM	WAFER
CN76	KJP04GB46ZM	WAFER
CN91	KJP02KA060ZY	WAFER
D201	HVDMTZJ3.3BT	DIODE, ZENER MTZJ3.3BT
D701	HVD342YCTB7T089	LED, YELLOW
D702	HVD1SS133MT	DIODE, 1SS133MT
D703	HVD1SS133MT	DIODE, 1SS133MT
D706	HVD1SS133MT	DIODE, 1SS133MT
D707	HVD1SS133MT	DIODE, 1SS133MT
D708	HVD1SS133MT	DIODE, 1SS133MT
D901	△ KVD1N4003ST	DIODE, 1N4003ST
D902	△ KVD1N4003ST	DIODE, 1N4003ST
D903	△ KVD1N4003ST	DIODE, 1N4003ST
D904	△ KVD1N4003ST	DIODE, 1N4003ST
D905	△ KVD1N4003ST	DIODE, 1N4003ST
D906	HVD1SS133MT	DIODE, 1SS133MT
D907	HVDMTZJ4.7BT	DIODE, ZENER MTZJ4.7BT
D908	△ KVD1N4003ST	DIODE, 1N4003ST
D909	△ KVD1N4003ST	DIODE, 1N4003ST
D910	HVDMTZJ6.2BT	DIODE, ZENER MTZJ6.2BT
D911	HVDMTZJ6.2BT	DIODE, ZENER MTZJ6.2BT
D912	△ KVD1N4003ST	DIODE, 1N4003ST
D913	HVD1SS133MT	DIODE, 1SS133MT
ET21	CMD1A387	BRACKET, PCB
ET71	CMD1A501	BRACKET, FIP
ET72	CMD1A501	BRACKET, FIP
ET91	CNE75	PLATE, EARTH
ET92	CNE75	PLATE, EARTH
F901	KJCF5S	HOLDER, FUSE
IC21	HVINJM2068MDTE1	IC, NJM2068MDTE1
IC22	BV174HC4066D	IC, 74HC4066D
IC71	HVIANAM1371T	IC, FLASH U-COM
IC72	HVIRE5VT28CATZ	IC, RE5VT28CATZ
IC91	CMY2A048	HEAT SINK
IC91	△ HV1KA78R05	IC, KA78R05
IC92	CMY2A048	HEAT SINK
IC92	△ HV1KA78R05	IC, KA78R05
IC93	△ HV1KA78R12	IC, KA78R12
IC94	△ HV1RC1117ST	IC, RC1117ST

TEAC DAB PCB ASSY (GATHER)

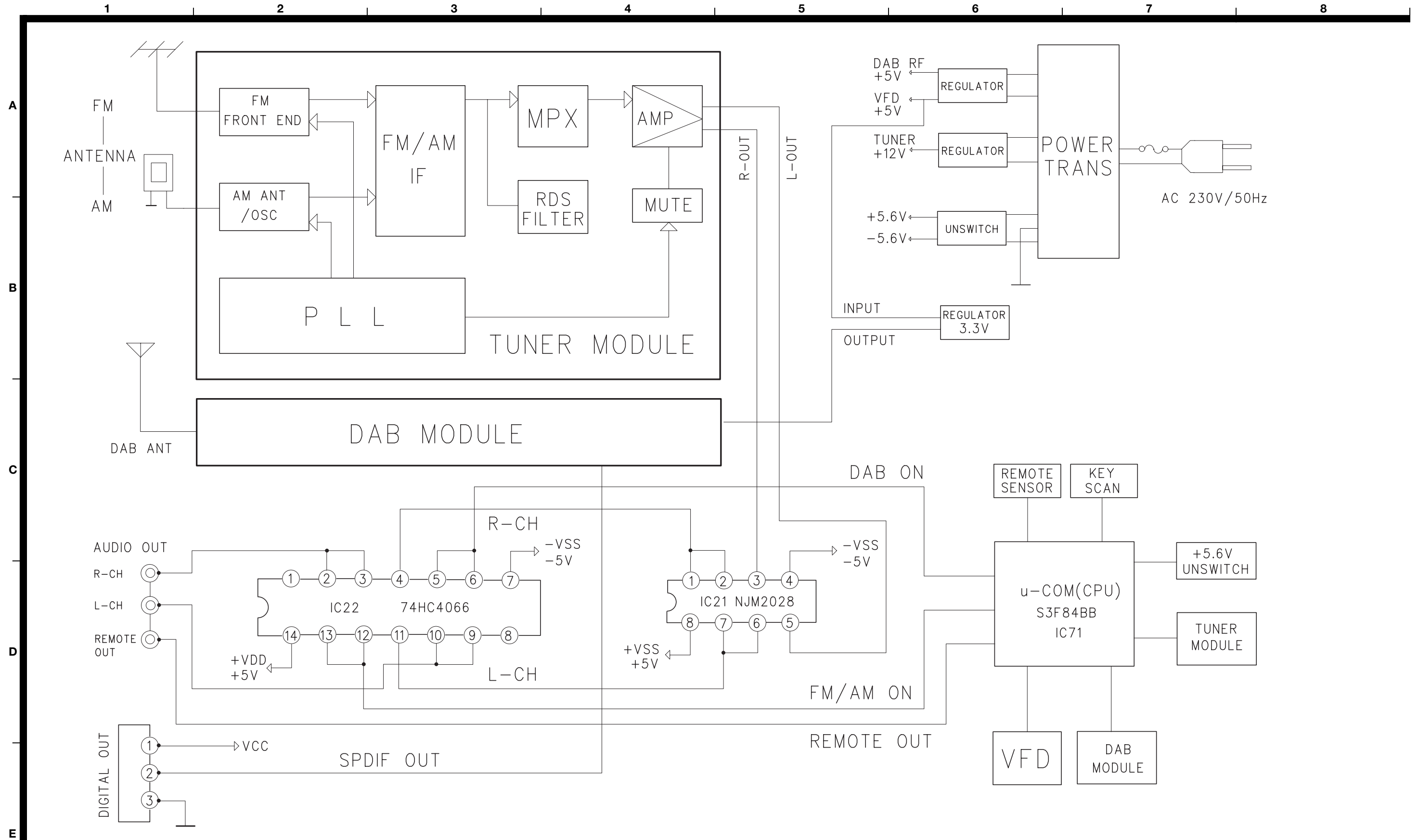
REF. NO.	PARTS NO.	DESCRIPTION
JK21	CJJ4S003X	TERMINAL, RCA JACK
JK22	HJSTOTX179L	MODULE, OPTICAL (TX)
JK23	CJJ3G012Z	ANT, TERMINAL
L201	HLQ02C2R7KT	COIL, AXIAL
Q201	HVTKTC2874BT	TR, KTC2874BT
Q202	HVTKTC2874BT	TR, KTC2874BT
Q701	HVTKRA107MT	TR, KRA107MT
Q702	HVTKRA107MT	TR, KRA107MT
Q703	HVTKRA107MT	TR, KRA107MT
Q704	HVTKRA107MT	TR, KRA107MT
Q705	HVTKRA107MT	TR, KRA107MT
Q708	HVTKRC107MT	TR, KRC107MT
Q709	HVTKRC107MT	TR, KRC107MT
Q710	HVTKRC107MT	TR, KRC107MT
Q711	HVTKRC107MT	TR, KRC107MT
Q905	△ HVTKTC3198YT	TR, KTC3198YT
Q906	△ HVTKTA1266YT	TR, KTA1266YT
RS71	KRVH1M602H32	SENSOR, REMOCOIN
S701	HST1A016Z	SW, TACT
S702	HST1A016Z	SW, TACT
S703	HST1A016Z	SW, TACT
S704	HST1A016Z	SW, TACT
S705	HST1A016Z	SW, TACT
S706	HST1A016Z	SW, TACT
S707	HST1A016Z	SW, TACT
S708	KST1A010Z	SW, TACT
T901	△ CLT5M026ZE	TRANS, POWER
VE71	HSR2A025Z	ENCODER, SWITCH
WF11	KJP17GA115ZG	WAFER, CARD CABLE
WF72	KJP21GA115ZG	WAFER, CARD CABLE
X701	HOX10000E220C	CRYSTAL

4 INCLUDED ACCESSORIES

INCLUDED ACCESSORIES

REF. NO.	PARTS NO.	DESCRIPTION	REMARKS
	CQX1A860Z	OWNER'S MANUAL	
	CARTT-H300DABUK	TRANSMITTER ASSY	
	HABAAAM1.5VHK	BATTERY	
	CJS4N014Z	CORD, PIN	
	KJS4M014Y	CORD, PIN	
	CSA1A018Z	FM 1 POLE ANT	
	CSA1A020Z	AM LOOP ANT	
	CSA272	ANT, DAB T	

TEAC BLOCK DIAGRAM T-H300DAB

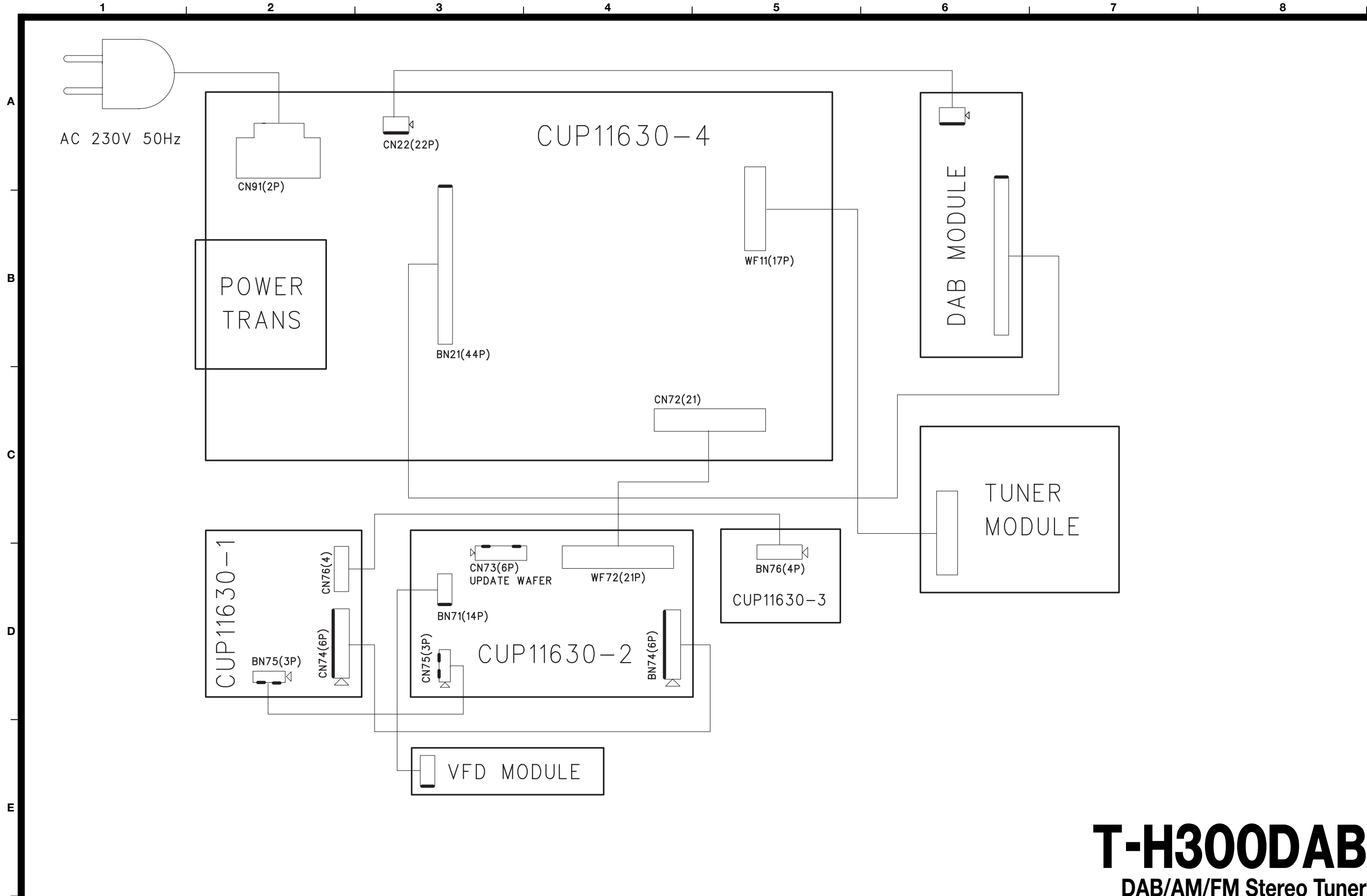


T-H300DAB

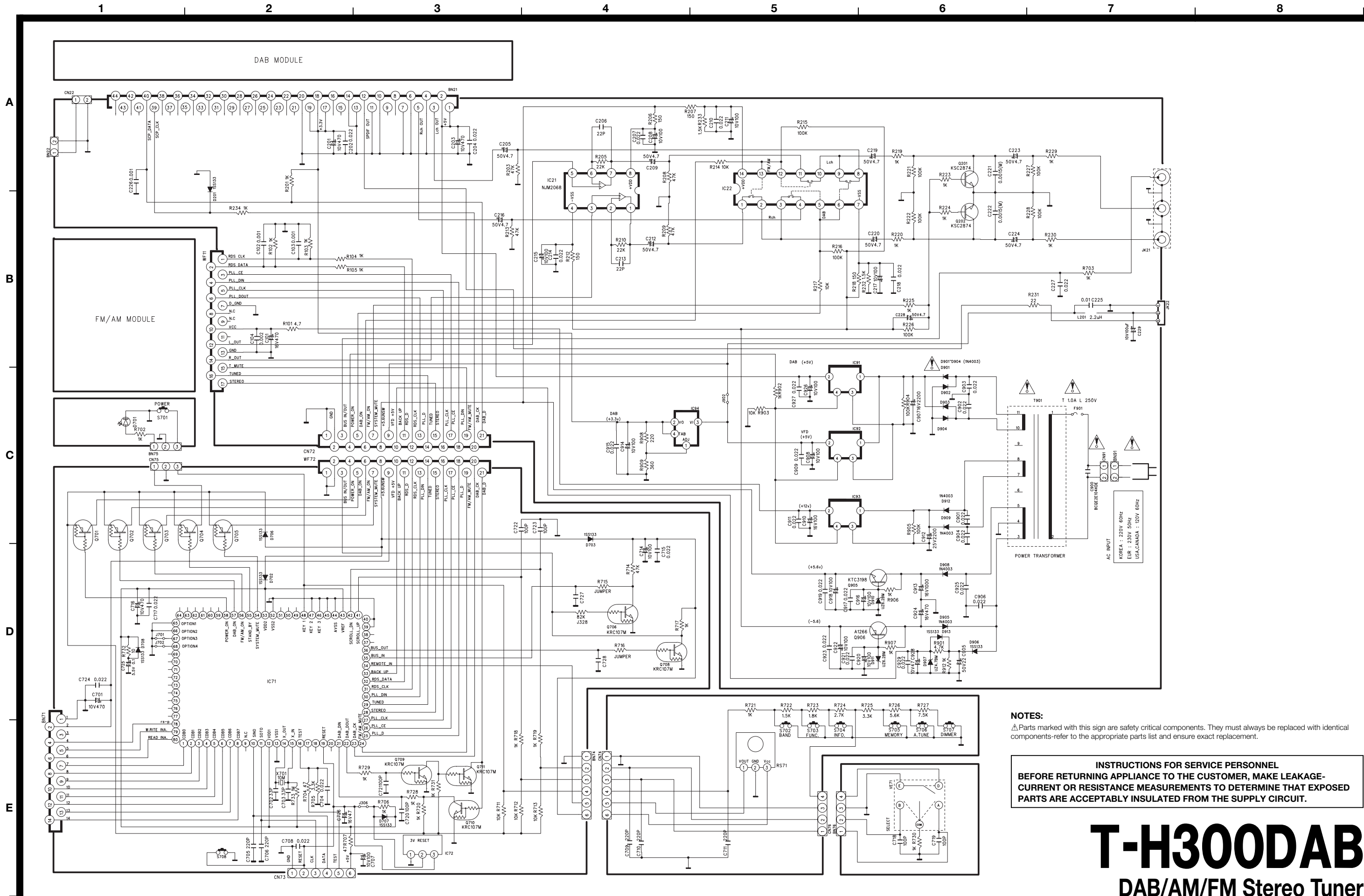
DAB/AM/FM Stereo Tuner

1st Issue; September 2003

TEAC WIRING DIAGRAM **T-H300DAB**



TEAC SCHEMATIC DIAGRAM T-H300DAB



NOTES:
 ⚠ Parts marked with this sign are safety critical components. They must always be replaced with identical components—refer to the appropriate parts list and ensure exact replacement.

INSTRUCTIONS FOR SERVICE PERSONNEL
BEFORE RETURNING APPLIANCE TO THE CUSTOMER, MAKE LEAKAGE-CURRENT OR RESISTANCE MEASUREMENTS TO DETERMINE THAT EXPOSED PARTS ARE ACCEPTABLY INSULATED FROM THE SUPPLY CIRCUIT.

T-H300DAB

DAB/AM/FM Stereo Tuner

1st Issue; September 2003