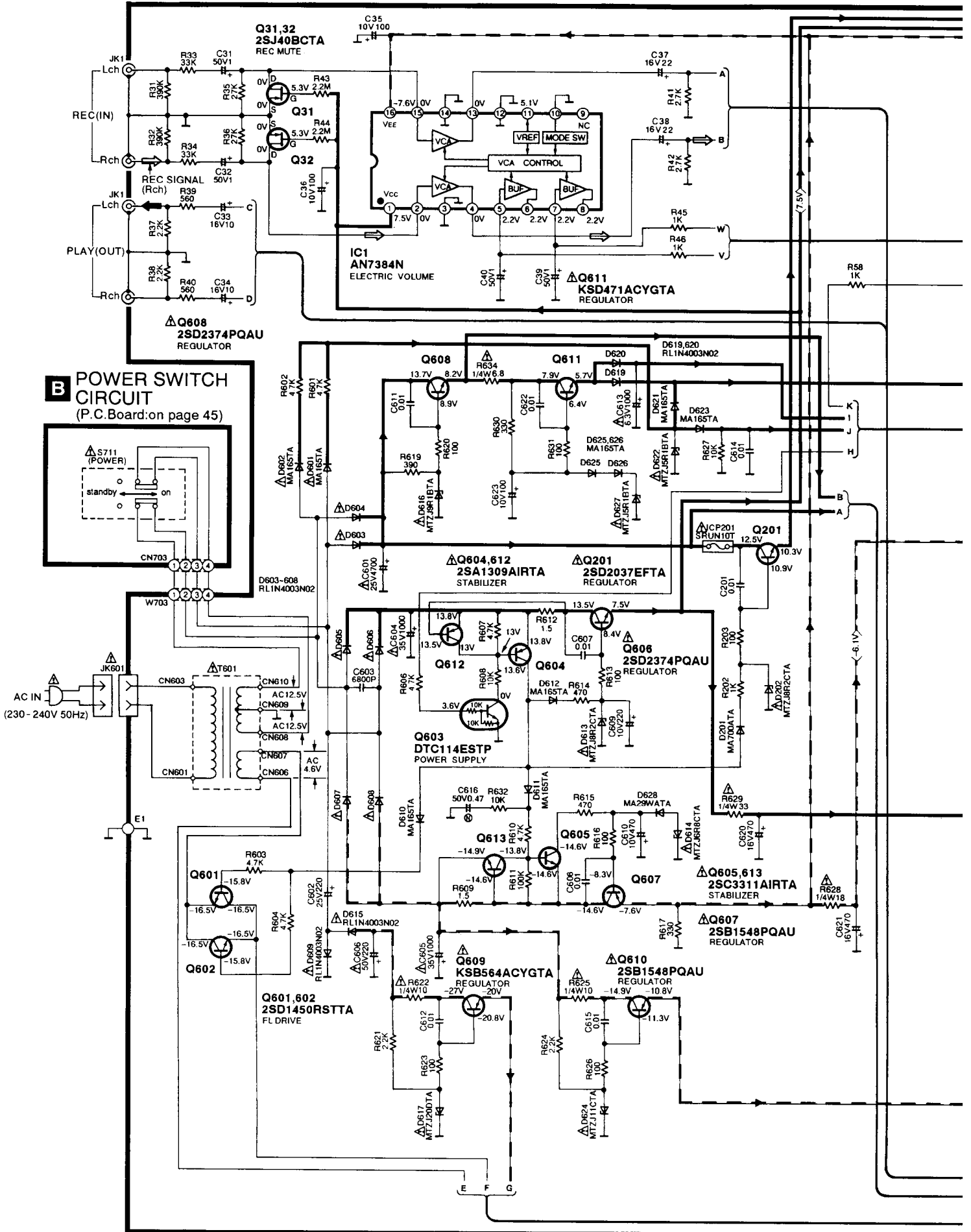
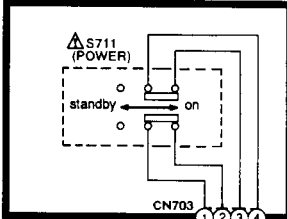
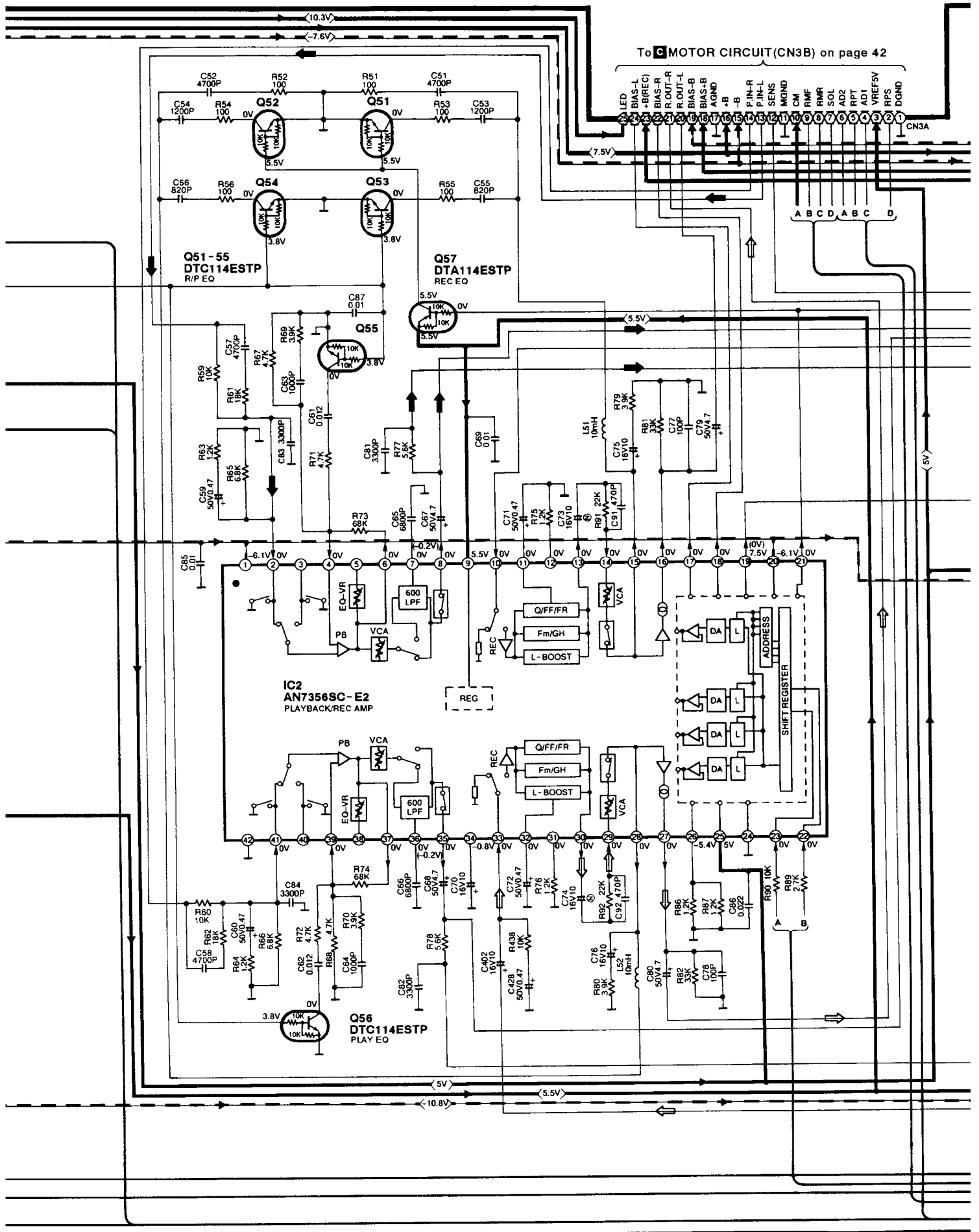


A MAIN CIRCUIT (P.C.Board: on page 46)

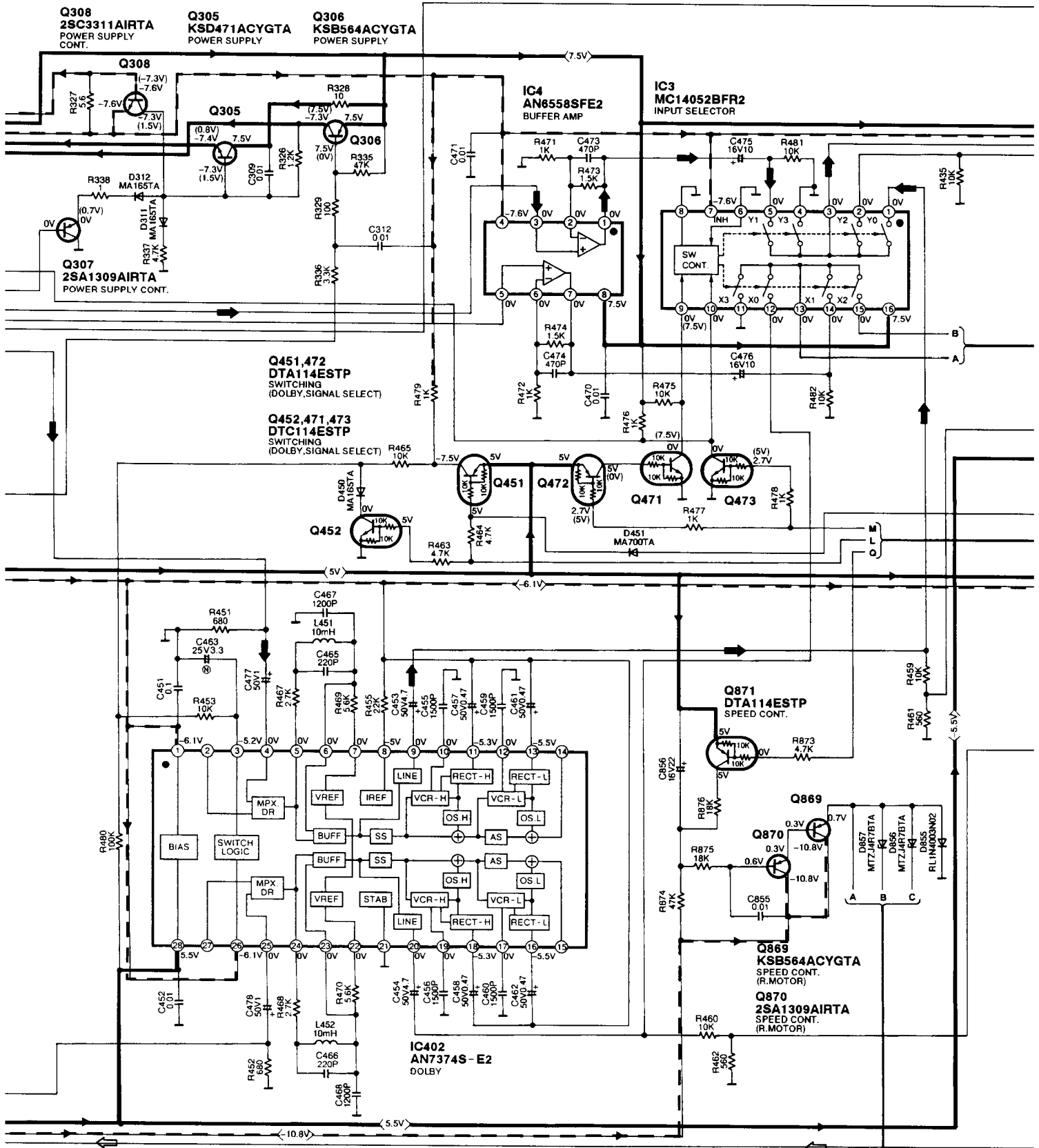


B POWER SWITCH CIRCUIT (P.C.Board: on page 45)



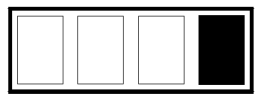
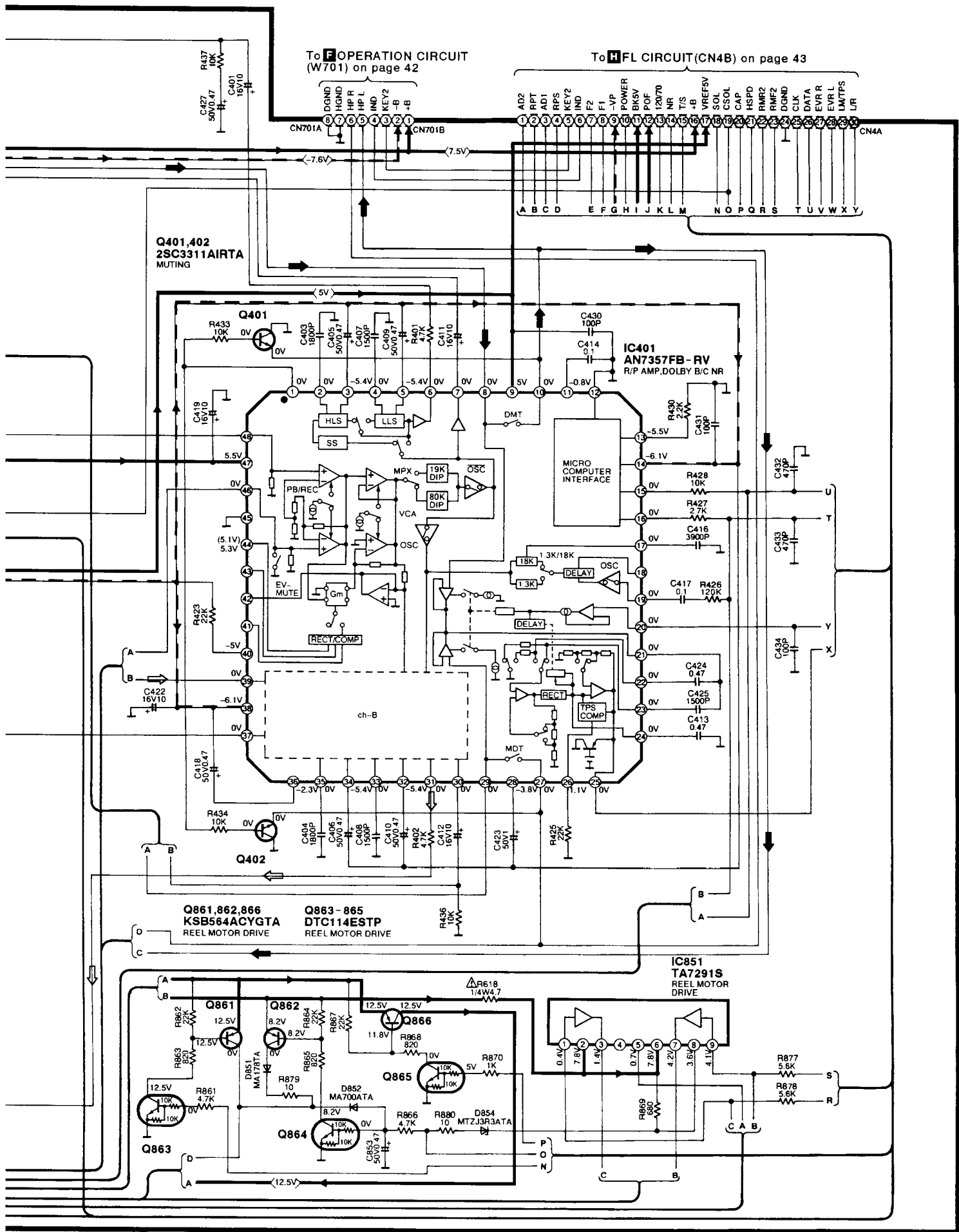


A MAIN CIRCUIT (P.C.Board: on page 46)

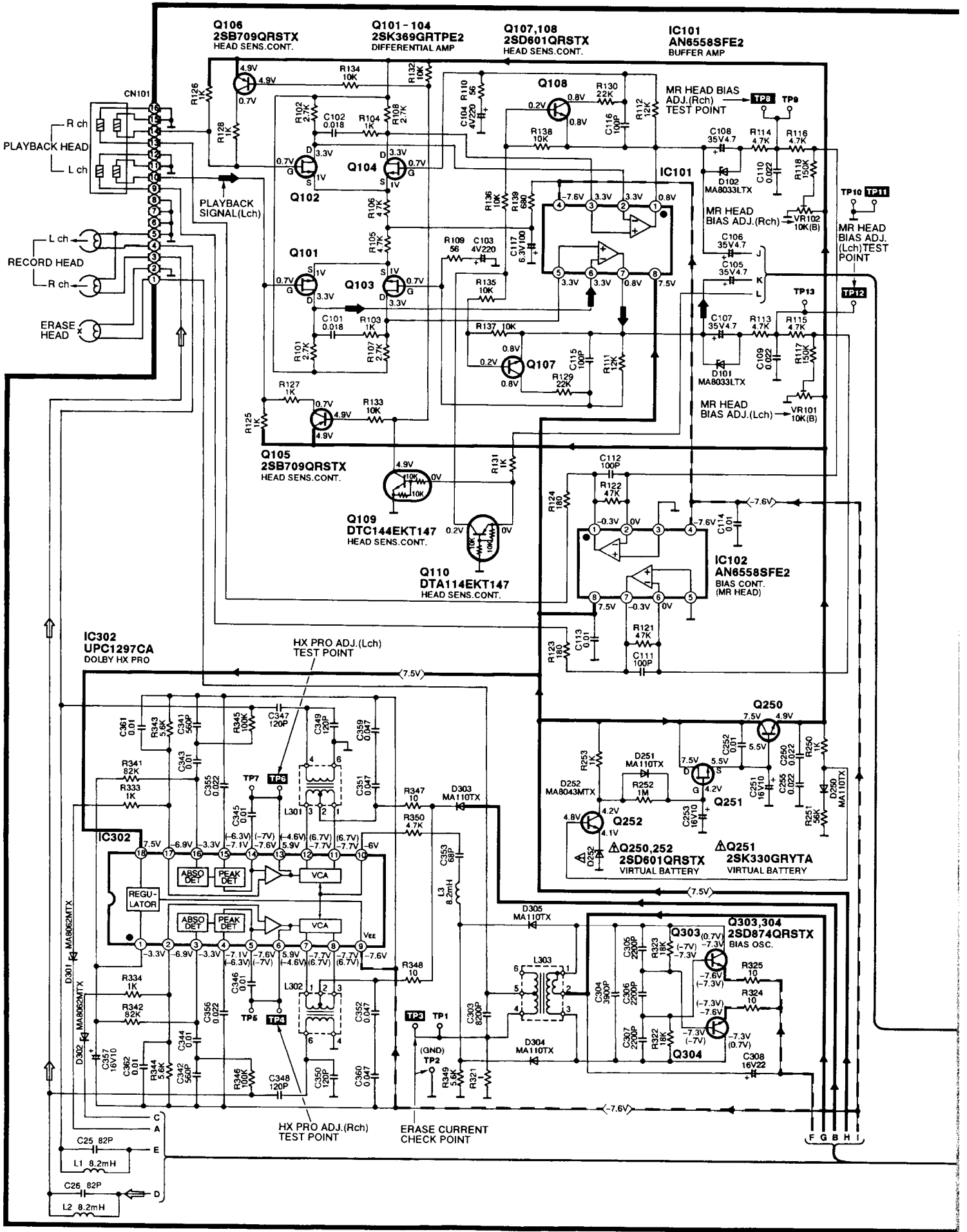


To OPERATION CIRCUIT (W701) on page 42

To FL CIRCUIT (CN4B) on page 43

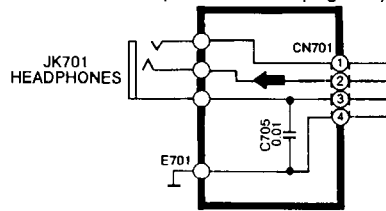


C MOTOR CIRCUIT (P.C.Board: on page 44)

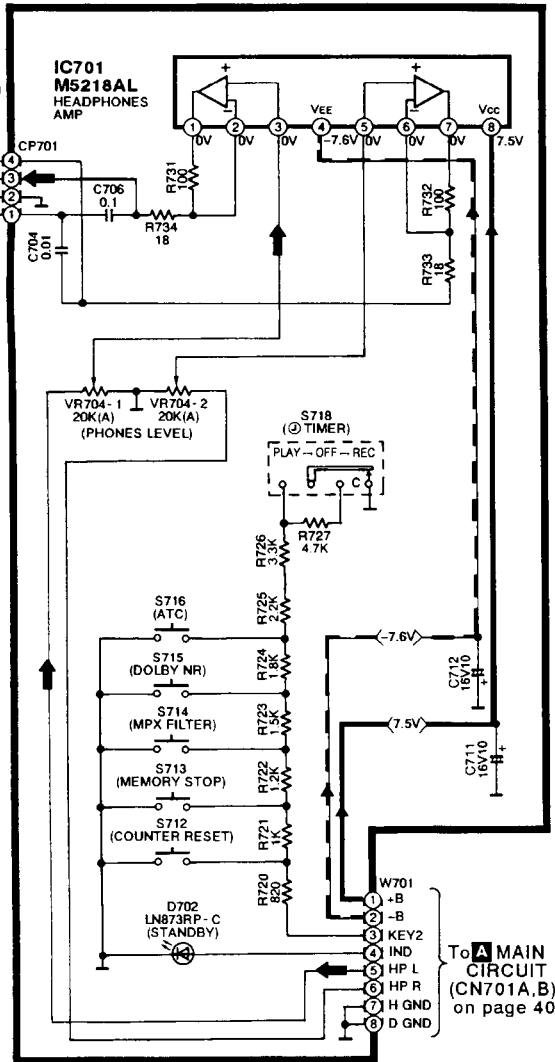
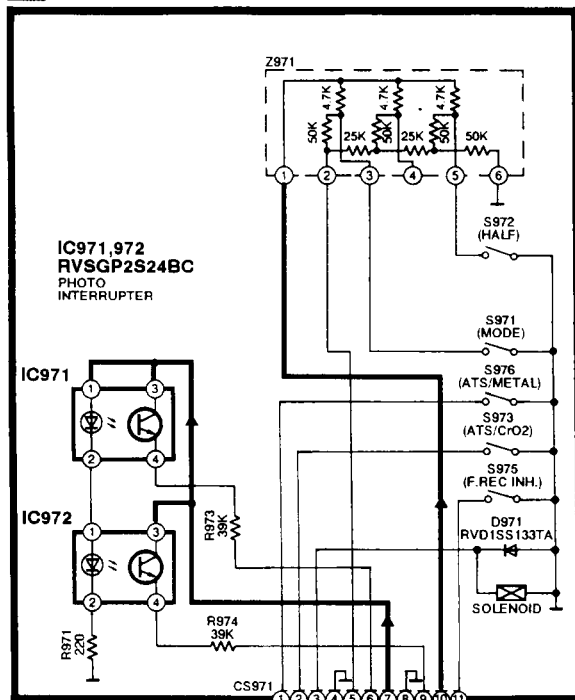


F OPERATION CIRCUIT (P.C.Board: on page 45)

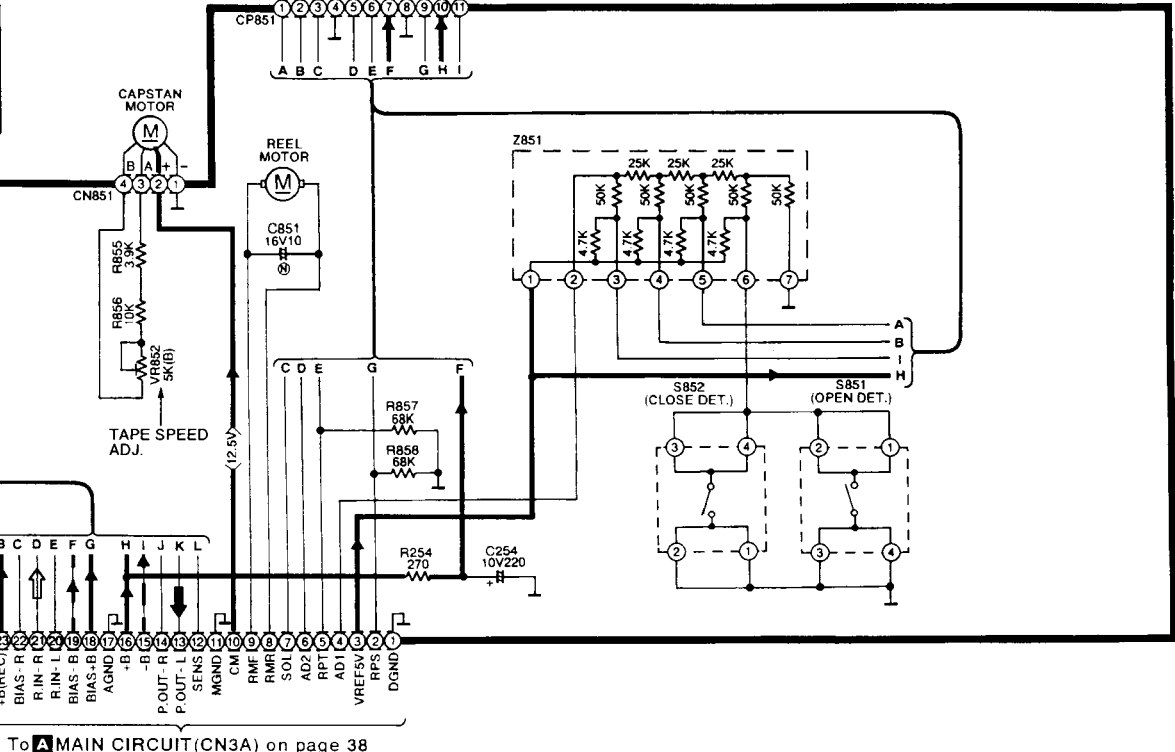
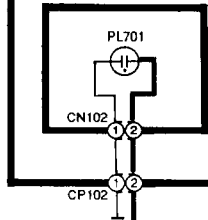
E HEADPHONES JACK CIRCUIT (P.C.Board: on page 45)



D MECHANISM CIRCUIT (P.C.Board: on page 44)



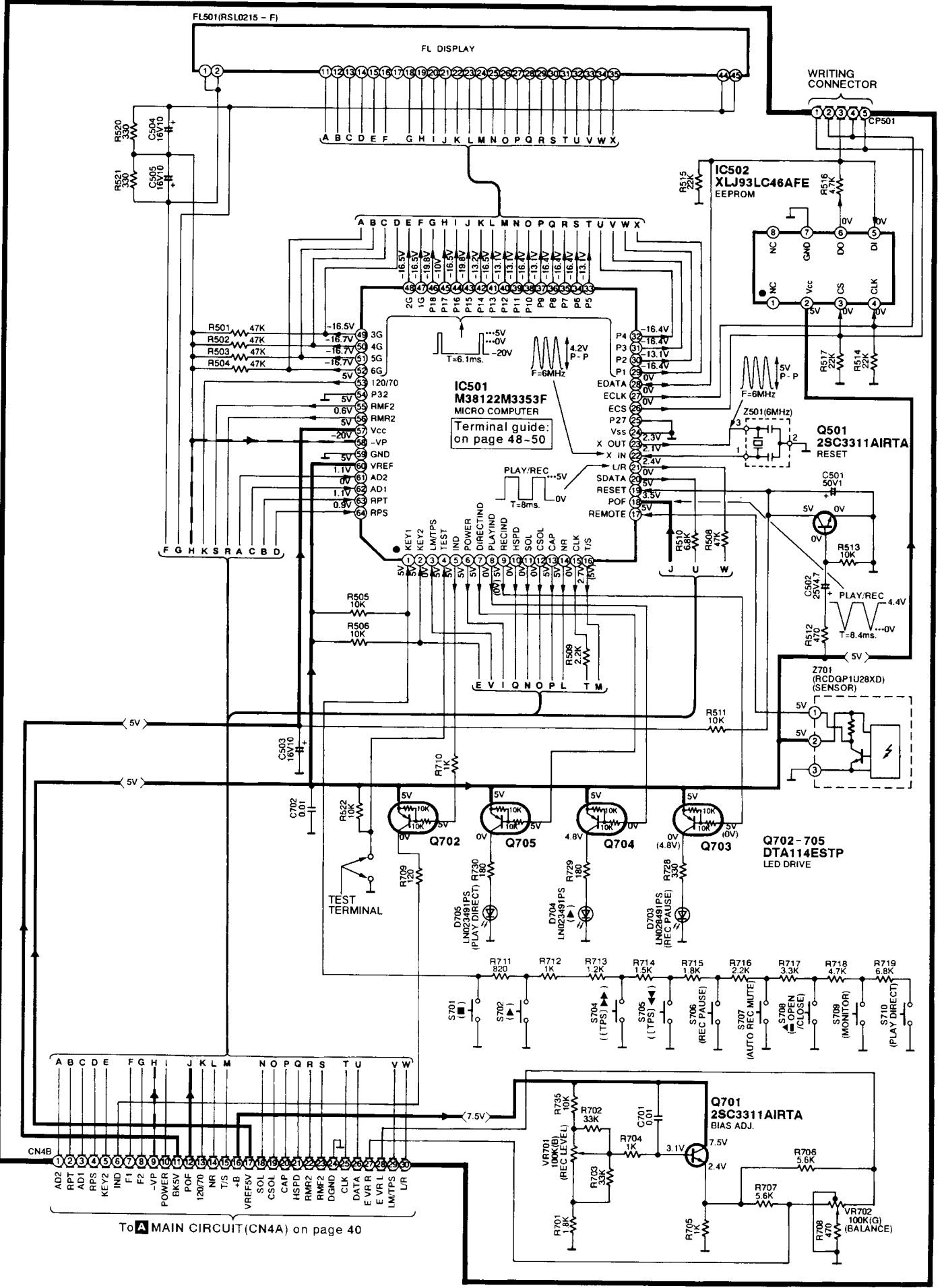
G LAMP CIRCUIT (P.C.Board: on page 45)



To MAIN CIRCUIT (CN3A) on page 38



H FL CIRCUIT (P.C.Board: on page 45)



To **A** MAIN CIRCUIT (CN4A) on page 40