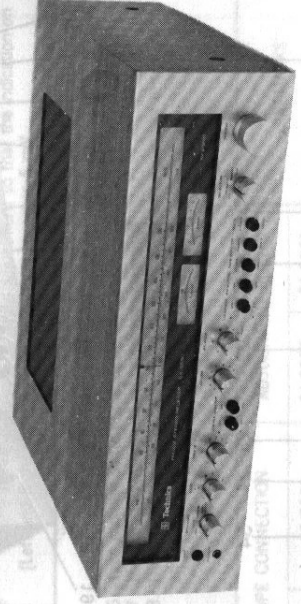



Technics
HI-FI COMPONENTS

Technics

Service Manual

FM/AM STEREO RECEIVER


MODEL SA-5250
MODEL SA-5550

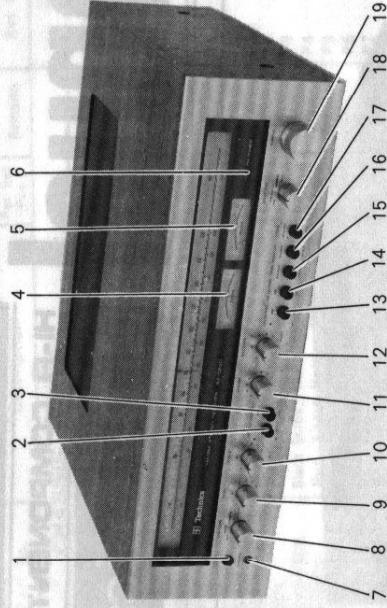
TECHNICAL SPECIFICATIONS (IHF)

	SA-5250	SA-5550
AMPLIFIER SECTION		
1 kHz continuous power	34W+34W (4Ω) 27W+27W (8Ω) 26W+26W (4Ω) 23W+23W (8Ω) 5 Hz~35 kHz, -3dB	80W+80W (4Ω) 62W+62W (8Ω) 72W+72W (4Ω) 58W+58W (8Ω) 5 Hz~45 kHz, -3dB
20 Hz~20 kHz continuous power	20 (8Ω), 10 (4Ω) 2mV/50kΩ 180mV/40kΩ 180mV/40kΩ	40 (8Ω), 20 (4Ω) 2mV/50kΩ 180mV/40kΩ 180mV/40kΩ
Power bandwidth (both channels driven 8Ω)	0.5% 0.7% 20 (8Ω), 10 (4Ω) 2mV/50kΩ 180mV/40kΩ 180mV/40kΩ	0.3% 0.4% 40 (8Ω), 20 (4Ω) 2mV/50kΩ 180mV/40kΩ 180mV/40kΩ
Total harmonic distortion	both channels driven	RIAA standard curve ±0.5 dB 5 Hz~90 kHz, ±1 dB
Intermodulation distortion	both channels driven	50 Hz~10 dB~-10 dB 10 kHz~+10 dB~-10 dB 50 Hz~+10 dB 150 Hz~-6 dB/oct 7 kHz~-6 dB/oct 180 mV 30 mV
Damping factor	PHONO	
Input sensitivity and impedance	AUX	
	TAPE 1.2 PLAYBACK	
	TAPE 1 REC/PLAY input	
	PHONO	
S/N (IHF, A)	AUX	
Frequency response	PHONO	
Tone control	BASS	
	TREBLE	
Loudness control (volume at -30 dB)		
Low filter		
High filter		
Output voltage	TAPE 1, 2 (REC OUT)	
	TAPE 1 REC/PLAY output	
FM TUNER SECTION		
Frequency range	88~108 MHz	88~108 MHz
Sensitivity	1.9 μV	1.8 μV
Total harmonic distortion	0.4% 0.3% 70 dB	0.4% 0.2% 70 dB
S/N	20 Hz~13 kHz, ±1 dB	20 Hz~15 kHz, ±1 dB
Frequency response	1.6 dB	1.6 dB
Alternate channel selectivity	70 dB	70 dB
Capture ratio	70 dB	70 dB
Image rejection at 98 MHz	50 dB	50 dB
IF rejection at 98 MHz	65 dB	65 dB
Spurious response rejection at 98 MHz	50 dB	50 dB
AM suppression	40 dB	40 dB
Stereo separation	30 dB	30 dB
Leak carrier	-45 dB	-55 dB
AM TUNER SECTION		
Frequency range	520~1610 kHz	520~1610 kHz
Sensitivity	30 μV, 250 μV/m	30 μV, 230 μV/m
Selectivity	25 dB	25 dB
Image rejection at 1,000 kHz	45 dB	45 dB
IF rejection at 1,000 kHz	40 dB	40 dB
GENERAL		
Power consumption	270W	610W
Power supply	110/120/220/240V	110/120/220/240V
Dimensions (W×H×D)	16 1/2"×5 1/2"×13 1/2" (420×140×355) mm	18 1/2"×5 1/2"×15 1/2" (459×140×400) mm
Weight	18.3 lb. (8.3 kg)	26.2 lb. (12.8 kg)

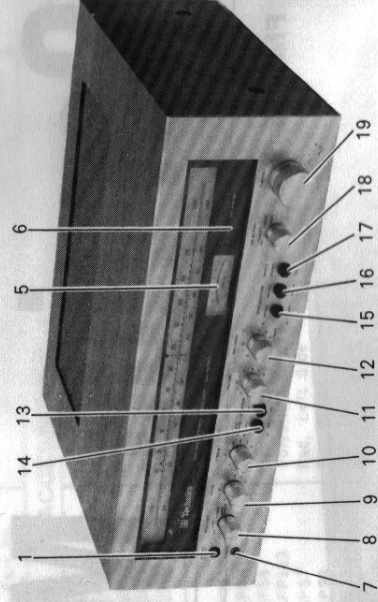
For accommodating future improvements, specifications are subject to change without notice.

Matsushita Electric
 Matsushita Electric Trading Co., Ltd.
 P. O. Box 288, Central Osaka, Japan

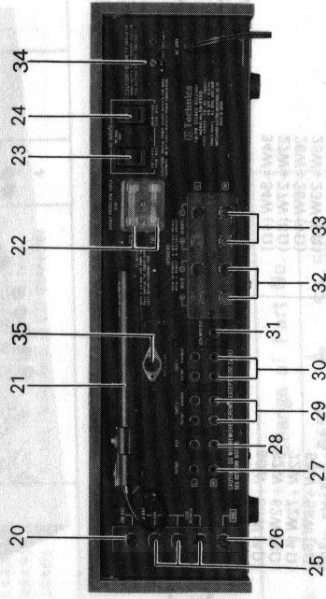
LOCATION OF CONTROLS



SA-5550

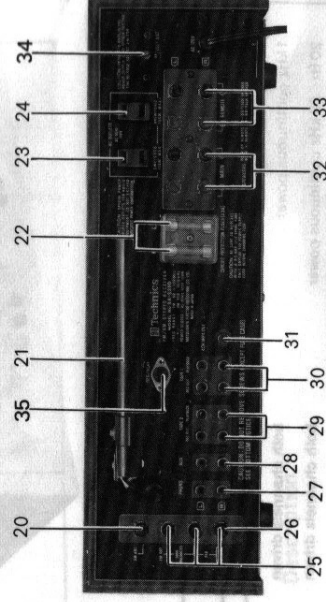


SA-5250



SA-5550

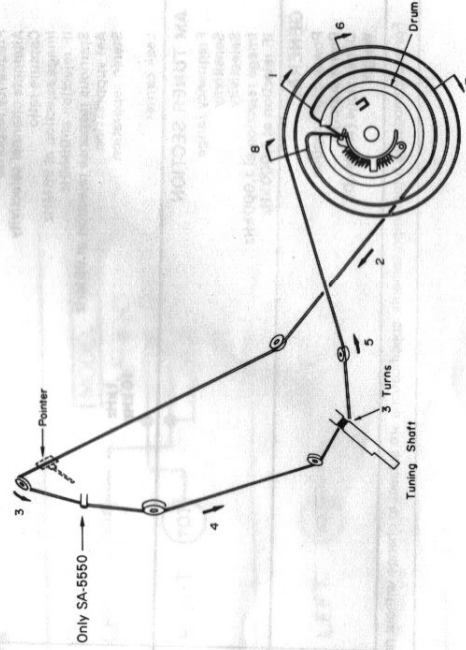
- 1. POWER SOURCE SWITCH
- 2. LOW FILTER SWITCH
- 3. HIGH FILTER SWITCH
- 4. FM TUNING METER
- 5. SIGNAL METER
- 6. STEREO INDICATOR (STEREO EYE)
- 7. HEADPHONES JACK
- 8. SPEAKERS SELECTOR SWITCH
- 9. BASS CONTROL
- 10. TREBLE CONTROL
- 11. VOLUME CONTROL
- 12. BALANCE CONTROL



SA-5250

- 13. LOUDNESS SWITCH
- 14. FM MUTING SWITCH
- 15. TAPE MONITOR (TAPE 1) SWITCH
- 16. TAPE MONITOR (TAPE 2) SWITCH
- 17. MODE SWITCH
- 18. SELECTOR SWITCH
- 19. TUNING CONTROL
- 20. AM ANTENNA TERMINAL
- 21. AM FERRITE CORE ANTENNA
- 22. CIRCUIT PROTECTION FUSES
- 23. AC OUTLET (Switched) } Not attach
- 24. AC OUTLET (Unswitched) } for England
- 25. FM ANTENNA TERMINALS
- 26. GROUND TERMINAL
- 27. PHONO INPUT TERMINALS
- 28. AUX INPUT TERMINALS
- 29. TAPE MONITOR (TAPE 2) TERMINALS
- 30. TAPE MONITOR (TAPE 1) TERMINALS
- 31. 4CH MPX OUTPUT TERMINAL
- 32. MAIN SPEAKER TERMINALS
- 33. REMOTE SPEAKER TERMINALS
- 34. VOLTAGE SELECTOR SWITCH
- 35. TAPE MONITOR 1 DIN SOCKET

DIAL CORD INSTALLATION GUIDE



- 1. Dial cord length is 90 $\frac{3}{8}$ " (230cm).
- 2. Tuning gang is positioned at maximum capacity. (Frequency is minimum)
- 3. Arrow marks (1~8) indicate correct order and direction of stringing dial cord.

ALIGNMENT INSTRUCTIONS.....READ CAREFULLY BEFORE ATTEMPTING ALIGNMENT

Note: The "IcQ" adjustment should be started 1~2 minutes after setting the power switch to the ON position.

CIRCUIT	DC VTVM CONNECTION	ADJUSTMENT POINTS	REMARKS
MAIN AMP ALIGNMENTOnly Model SA-5550			
1 DC UNBALANCE	Connect DC VTVM between point ① and point ② (Left and Right channels)	VR601 [Left and Right channel]	Make sure that DC VTVM becomes 0mV.
2 IcQ	Connect DC VTVM between point ③ [Positive side] and point ④ [Negative Side]. (Left and Right channels)	VR602 [Left and Right channel]	Make adjustments so that the indication on DC VTVM becomes 3 mV.
MAIN AMP ALIGNMENTOnly Model SA-5250			
3 IcQ	Connect DC VTVM between point ⑤ [Positive side] and point ⑥ [Negative side]. (Left and Right channels)	VR601 [Left and Right channel]	Make adjustment so that the indication on DC VTVM becomes 5 mV.

Notes:

1. Volume control Maximum Variable (FM-IF Alignment)
 2. Balance control Center
 3. Mode switch Stereo
 4. FM muting switch Off
 5. Selector switch AM (AM Alignment)
FM Auto (FM Alignment)
6. Tape monitor switch.....Source
 7. Maintain line voltage at rated voltage.
 8. Output of signal generator should be no higher than necessary to obtain an output reading.

SIGNAL GENERATOR or SWEEP GENERATOR CONNECTION	FREQUENCY	RECEIVER DIAL SETTING [DISTANCE]	VTVM or SCOPE CONNECTION	ADJUSTMENT POINTS		REMARKS
				SA-5550	SA-5250	
AM ALIGNMENT						
High side through 0.001μF to TP5, Common to chassis.	455 kHz	Point of non-interference.	TP1	Coil T2 (1st IF) T3 (2nd IF)	Coil T1 (1st IF) T2 (2nd IF)	Adjust for maximum output.
	600 kHz (30% Mod. with 400Hz)	600 kHz [15.7mm (5/8")]	Speaker terminals of set.	Coil T1 (OSC) L10 (ANT)	Coil L9 (OSC) L8 (ANT)	Adjust for maximum output.
Fashion loop of several turns of wire and radiate signal into loop of receiver.	1500 kHz (30% Mod. with 400Hz)	1500 kHz [191.3mm (7 5/8")]	Speaker terminals of set.	Trimmer CT5 (OSC) CT4 (ANT)	Trimmer CT4 (OSC) CT3 (ANT)	Adjust for maximum output. Repeat steps (5) and (6).

FM-IF ALIGNMENT

/	Point of non-interference.	Speaker terminals of set	T101 (DISCRI) [Primary]	T102 (DISCRI) [Primary]	Adjust for maximum output noise.
	Point of non-interference.	Between TP4 and 101 terminal	T101 (DISCRI) [Secondary]	T101 (DISCRI) [Secondary]	SA-5550...Adjust for center of tuning meter indication. SA-5250...Make sure that DC VTVM becomes 0V.

FM-RF ALIGNMENT

Connect to FM antenna terminal through FM dummy antenna (300Ω).	90 MHz (100% Mod. with 400 Hz)	90 MHz [29.2mm (1 1/8")]	Speaker terminals of set.	L6 (FM OSC Coil), L4 (FM DET Coil) L2 (FM ANT Coil)	Adjust for maximum output.
	106 MHz (100% Mod. with 400 Hz)	106 MHz [186.2mm (7 3/8")]	Speaker terminals of set.	Trimmer CT3 (OSC) CT2 (DET) CT1 (ANT)	Adjust for maximum output.

• Use six cornered alignment tool for aligning FM OSC coil (L6).

FM-MONO DISTORTION ALIGNMENT

Connect to FM antenna terminal through FM dummy antenna (300Ω).	98 MHz (100% Mod. with 400 Hz)	98 MHz	Connect distortion meter to speaker terminals.	T101 (FM DISCRI) [Primary]	T102 [Primary]	Adjust for minimum distortion
	Point of non-interference.	Point of non-interference.	Connect DC VTVM to TP4 and 101 terminal.	T102 (FM DISCRI) [Secondary]	T101 [Secondary]	SA-5550...Adjust for center of tuning meter indication. SA-5250...Make sure that DC VTVM becomes 0V.

SIGNAL METER ALIGNMENT

Connect to FM antenna terminal through FM dummy antenna (300Ω).	98 MHz (30% Mod. with 400 Hz) [Output 22dB]	98 MHz	Signal meter of set.	T102	T104	Adjust for maximum indication.
	98 MHz (30% Mod. with 400Hz) [Output 72dB]	98 MHz	Signal meter of set.	VR101	VR102	Adjust for about 4.7 point of signal meter indication.

SIGNAL GENERATOR		RECEIVER DIAL SETTING	VTVM or SCOPE CONNECTION		ADJUSTMENT POINTS		REMARKS
CONNECTION	FREQUENCY		SA-5550	SA-5250	SA-5550	SA-5250	
MUTING LEVEL ALIGNMENT							
Note : FM muting switch to ON position.							
Connect to FM antenna terminal through FM dummy antenna (300 Ω).	98 MHz 100% Mod. with 400Hz [Output 28dB, 1HF]	98 MHz (Input Level 16dB)	Speaker terminals of set.		VR102	VR101	Adjust so that output can be obtained.

16

FM MPX PILOT ALIGNMENT							
When use the frequency counter							
When not use the frequency counter							
① 98 MHz Non-modulation mono signal applied to set. ② Connect the frequency counter through 100 k Ω resistor to TP3, Common to chassis. ③ Adjust VR103 to 19 kHz \pm 100 Hz.							
Notes : Stereomodulator Connect stereomodulator output to EXT. MOD. terminal of signal generator. Inter OSC 1 kHz Pilot signal modulation 10% Signal generator Frequency approximately 98 MHz, Output level/72dB (1HF), Modulation mode to FM 1. Selector switch FM Auto 2. Balance control Center							
SIGNAL GENERATOR CONNECTION	STEREO MODULATOR MODE and MOD. RATE	INDICATOR	ADJUSTMENT POINTS			REMARKS	
FM antenna terminal through dummy antenna.	L (and R) 30% Mod.			VR104	Adjust for minimum right (and left) output.		

18

SA-5550

ALIGNMENT POINTS

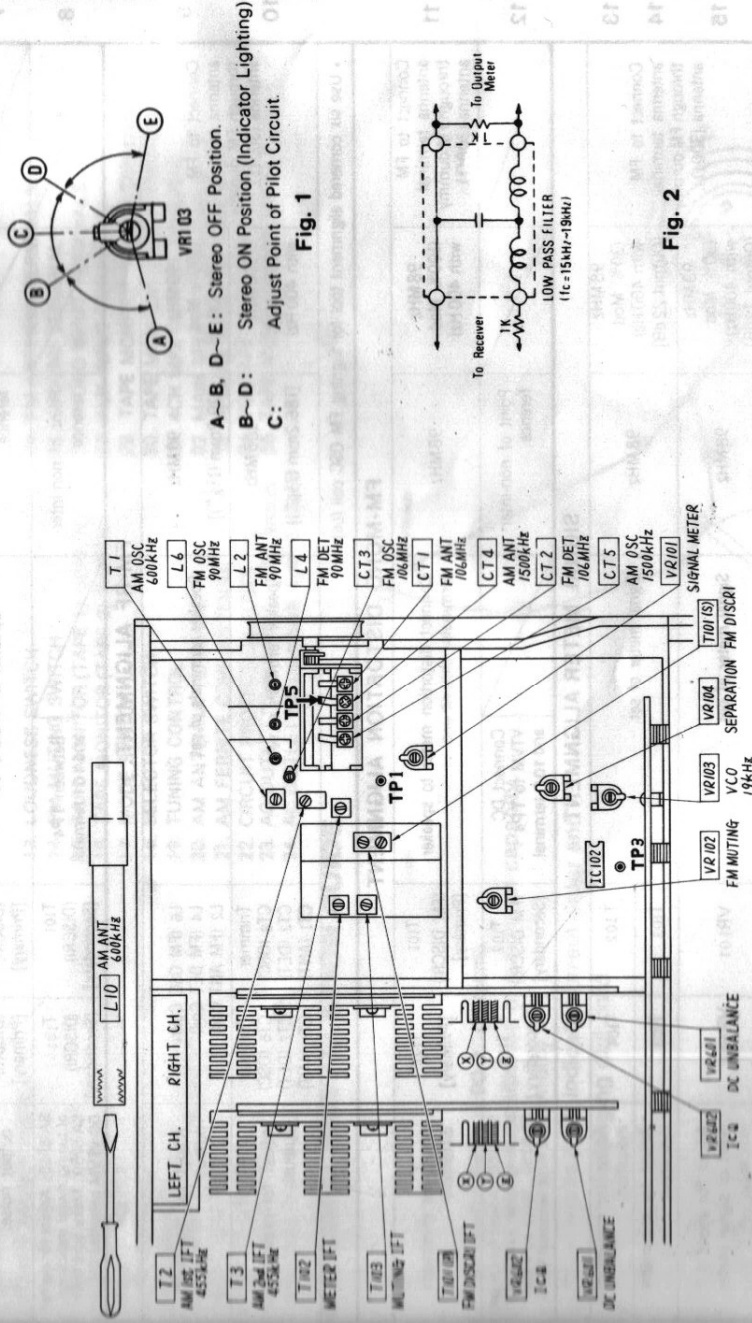
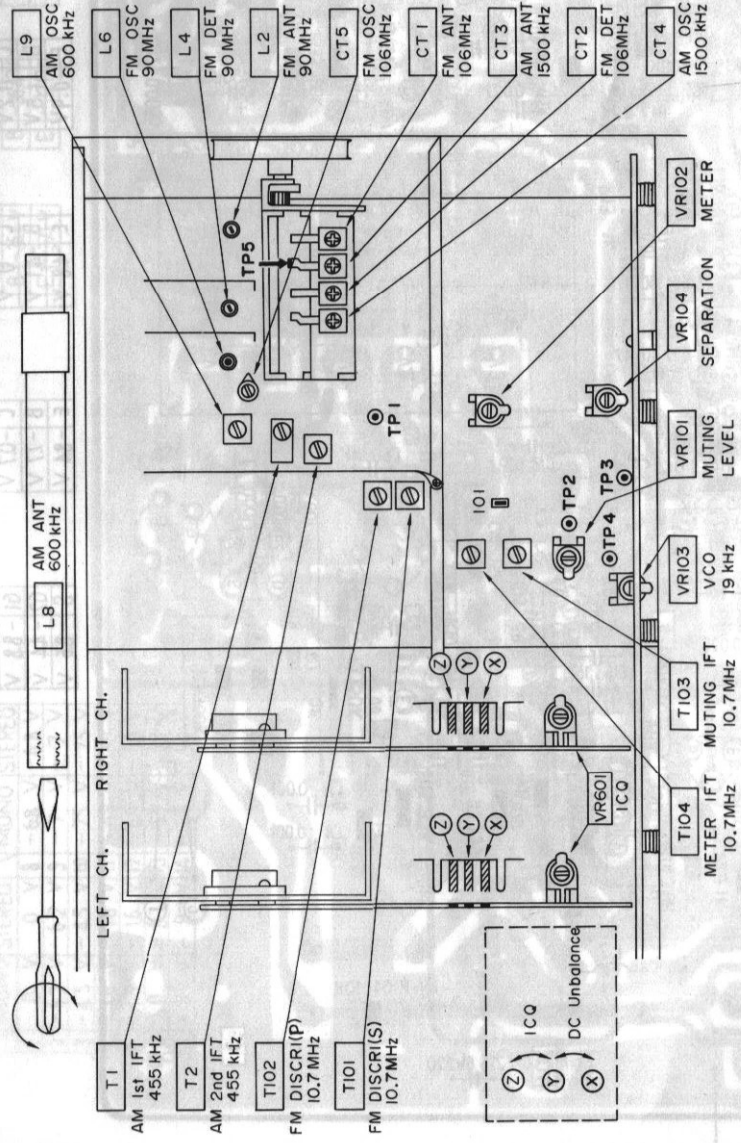


Fig. 2



SA-5550

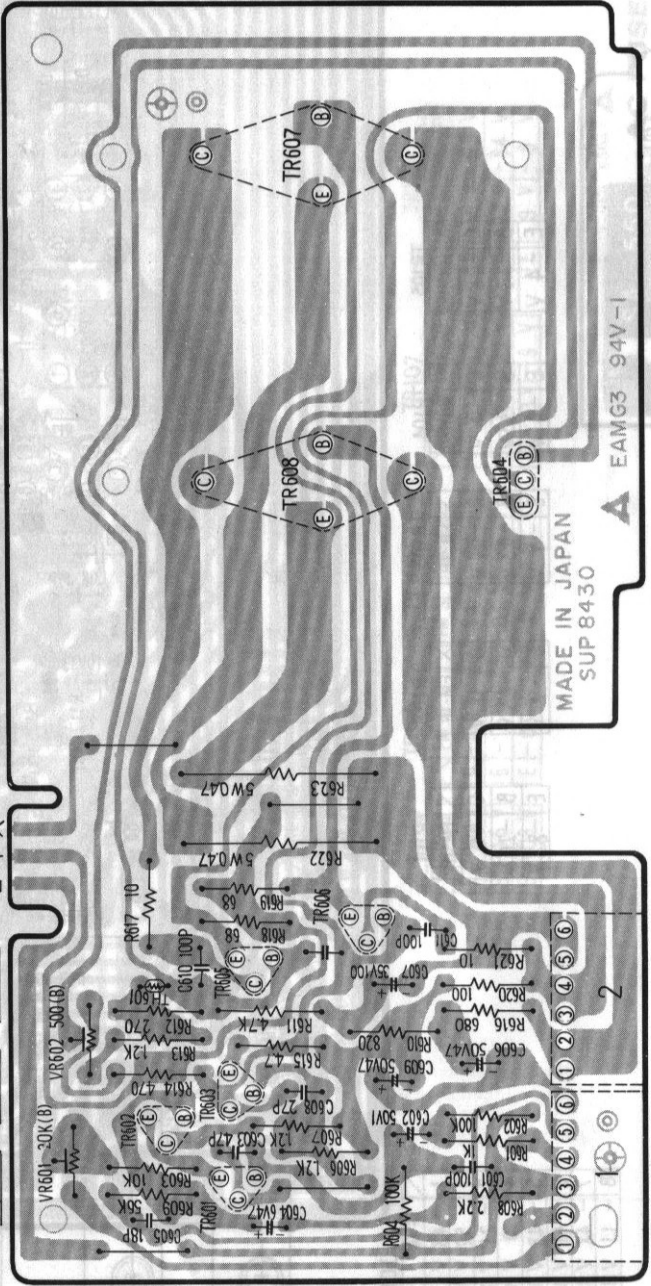
MAIN AMPLIFIER CIRCUIT BOARDLeft ch. or Right ch.

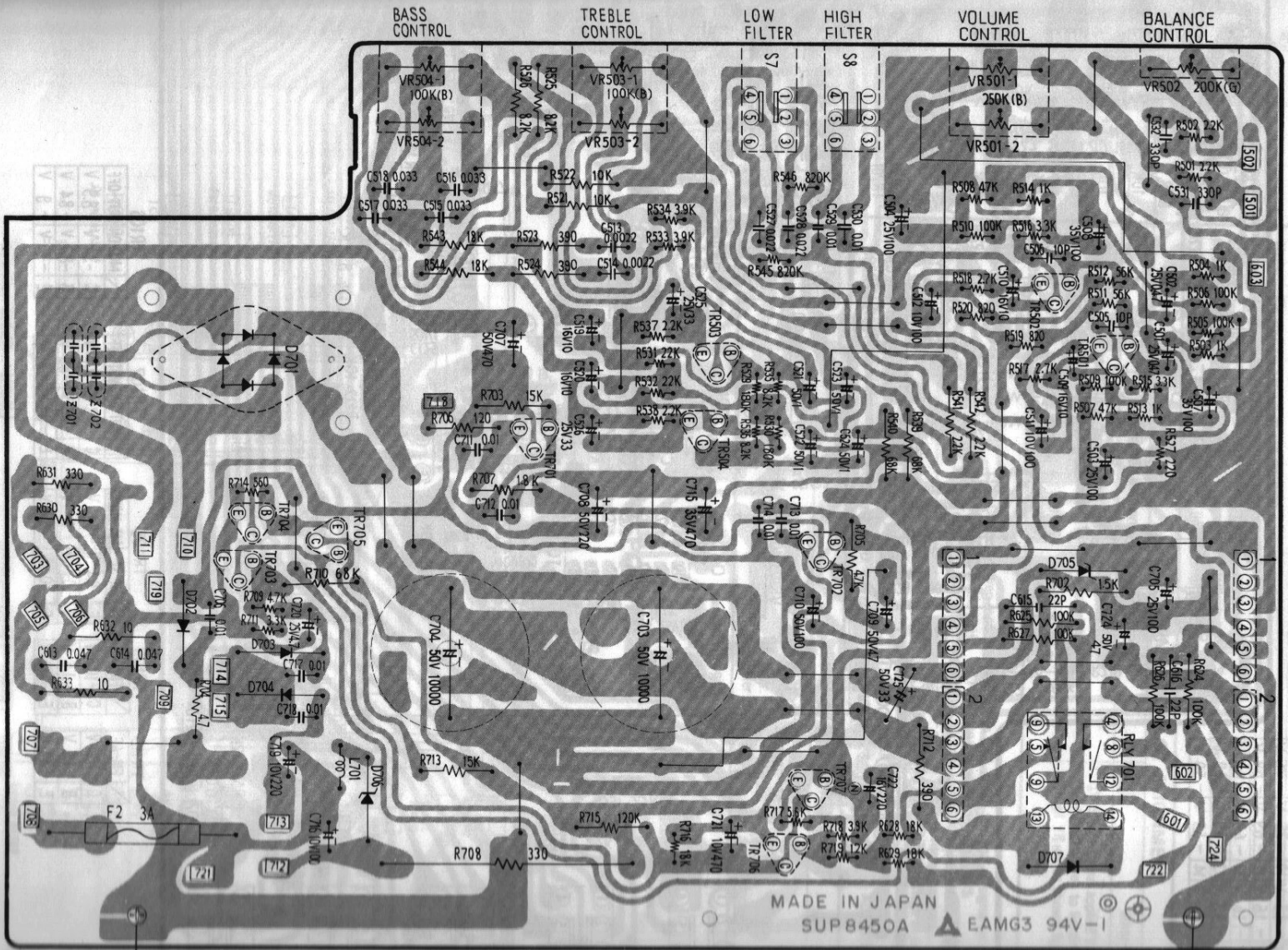
(Left channel is same as Right channel.)

TR601	AF	C -43.3V	B 0.2V	E 0.8V
TR602	AF	C -43.6V	B 0.2V	E 0.8V
TR603	PRE DRIVER	C -1.1V	B -43.8V	E -44.3V

TR604	THERMAL COMP	C -0.5V	B 1.1V	E -1.1V
TR605	DRIVER	C 44.8V	B 1.1V	E 0.6V
TR606	DRIVER	C -44.8V	B -1.1V	E -0.6V

TR607	POWER	C 45.0V	B 0.6V	E 0.0V
TR608	POWER	C -45.0V	B -0.6V	E 0.0V





MADE IN JAPAN
 SUP8450A EAMG3 94V-1

TR502	ELC AMP	C-18V
		B-31V
		E-85V
TR504	ELC AMP	C-18V
		B-31V
		E-85V
TR505	ELC AMP	C-18V
		B-31V
		E-85V
TR701	ELC AMP	C-18V
		B-31V
		E-85V
TR702	ELC AMP	C-18V
		B-31V
		E-85V
TR703	ELC AMP	C-18V
		B-31V
		E-85V
TR704	ELC AMP	C-18V
		B-31V
		E-85V
TR705	ELC AMP	C-18V
		B-31V
		E-85V

IC 102

FM MONO	FM STEREO	FM MONO	FM STEREO
1 0 V	0 V	8 -6.8 V	6.8 V
2 -6.2 V	-6.2 V	9 -7 V	7 V
3 -4.5 V	-4.5 V	10 -7.5 V	7.5 V
4 -1.6 V	-1.6 V	11 -6.9 V	6.9 V
5 -1.6 V	-1.6 V	12 -6.9 V	6.9 V
6 0 V	-8.3 V	13 -6.9 V	6.9 V
7 -9 V	-9 V	14 -5.9 V	5.9 V

TR204

AF	
C -241V	
B -364V	
E -371V	

TR203

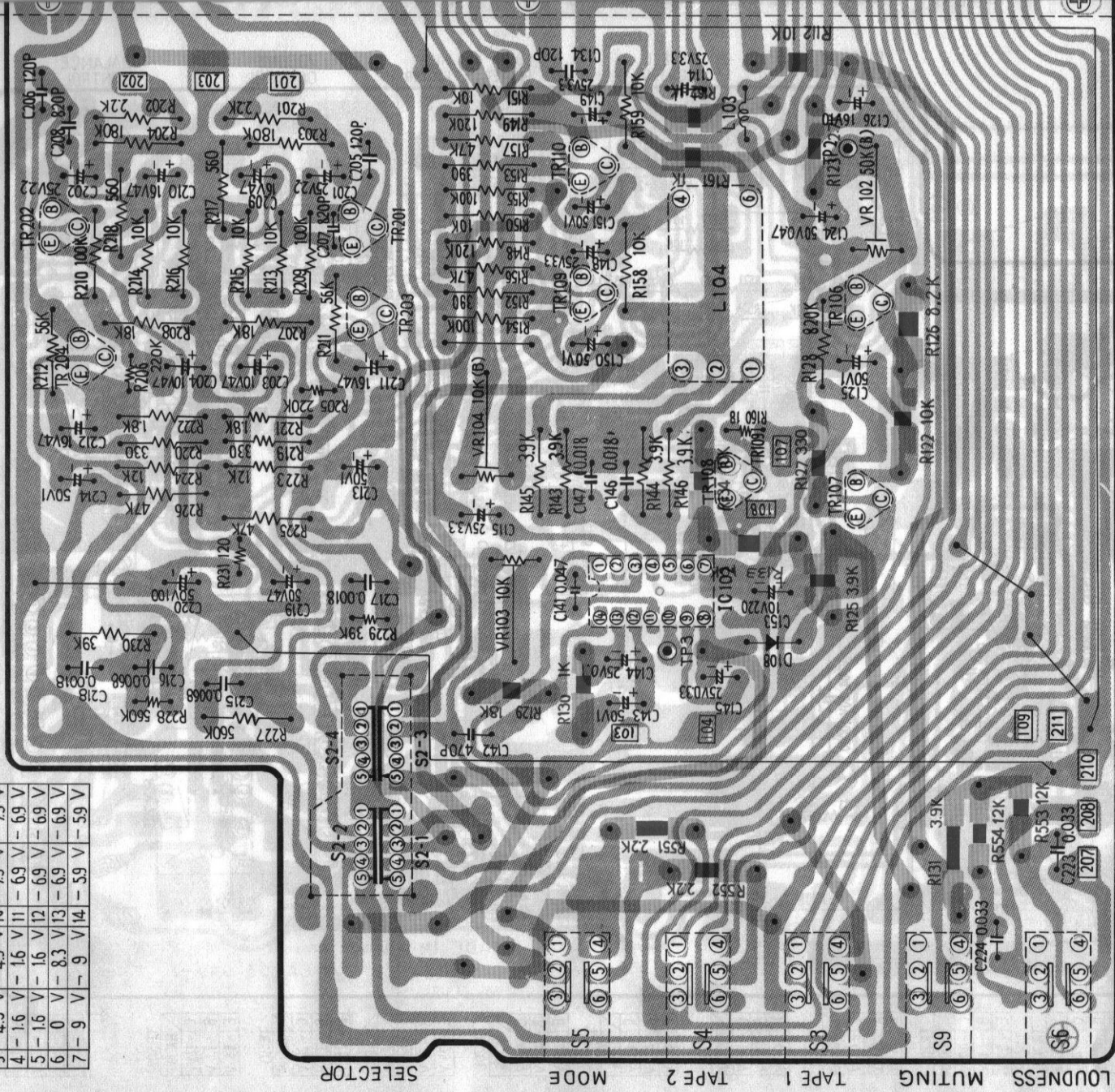
AF	
C -241V	
B -364V	
E -371V	

TR202

AF	
C -364V	
B -2.7V	
E -2.2V	

TR201

AF	
C -364V	
B -2.7V	
E -2.2V	



TR110

FM-AF	
C -104V	
B -1.5V	
E -0.8V	

TR109

FM-AF	
C -104V	
B -1.5V	
E -0.8V	

TR108

FM-ST	FM-MONO
C -0.4 V	-8.1 V
B -0.7 V	0 V
E 0 V	0 V

TR107

MUT-ON	MUT-OFF
C -8.3 V	-1.7 V
B -7.6 V	-8.9 V
E -8.3 V	-9 V

TR106

MUT-ON	MUT-OFF
C -3.4 V	-8.9 V
B -8.7 V	-8.4 V
E -9 V	-9 V

SA-5550

AC FUSE CIRCUIT

TR4

AM-AF
C -11.2V
B -1.5V
E -0.9V

TR3

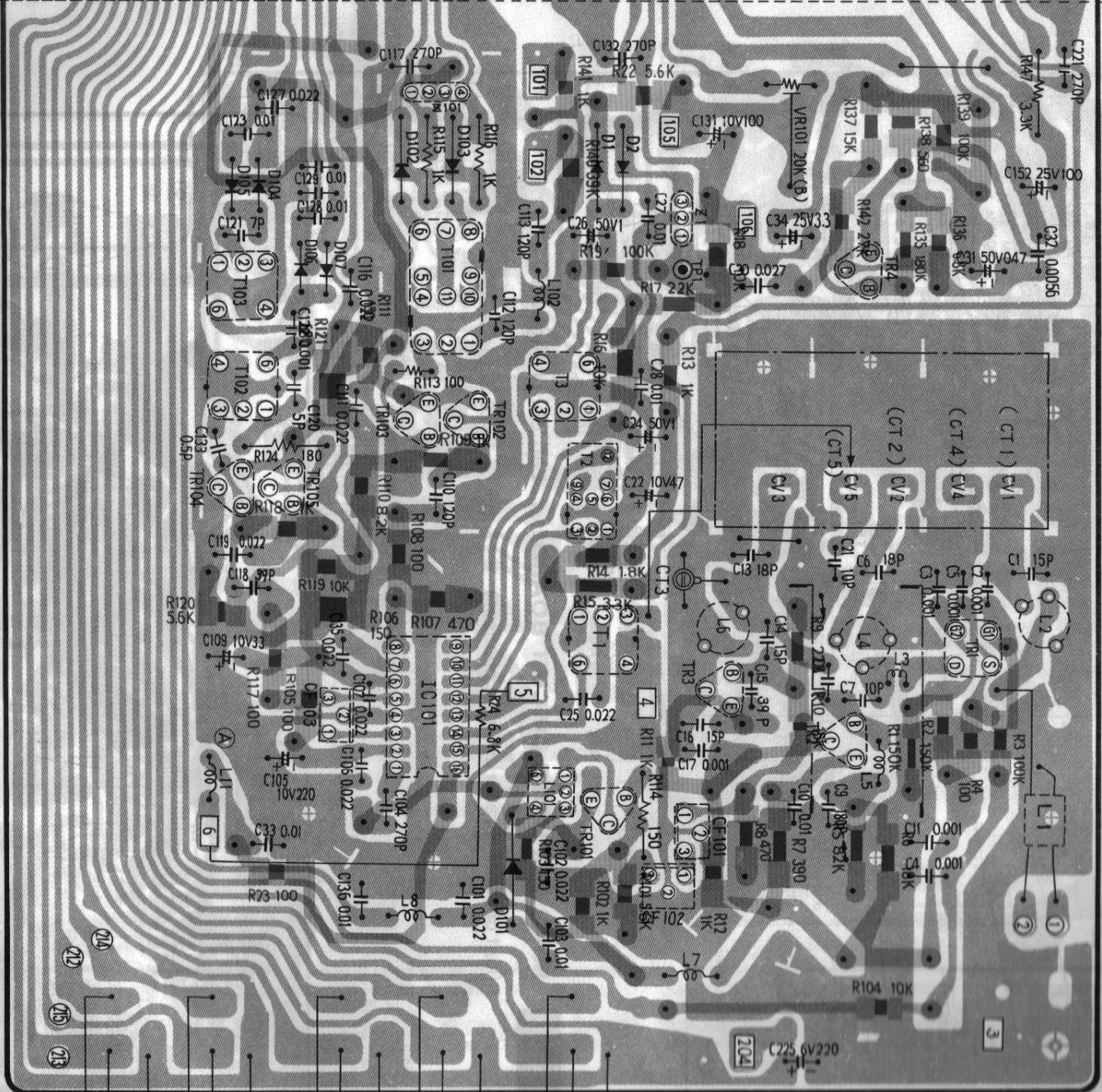
FM-O5C
C 0 V
B -4.1 V
E -4.8 V

TR2

FM-MIX
C -0.7 V
B -7.7 V
E -8.4 V

TR1

FM-RF
D 0 V
G1 -8.8 V
G2 -4.4 V
S -8.6 V



IC101

FM	AM
1 - 4.8 V	9 0 V
2 - 5.2 V	10 - 5.1 V
3 - 2.1 V	11 - 6.1 V
4 0 V	12 0 V
5 - 4.8 V	13 - 5.6 V
6 - 6.1 V	14 - 4.8 V
7 - 4.8 V	15 0 V
8 - 1.1 V	16 - 5.6 V

TR105

MUTING
C -0.8 V
B -3.3 V
E -4 V

TR104

MUTING
C 0 V
B -3.3 V
E -4 V

TR103

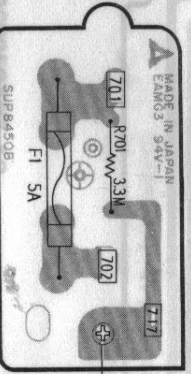
FM-TF
C -0.7 V
B -6.3 V
E -7 V

TR102

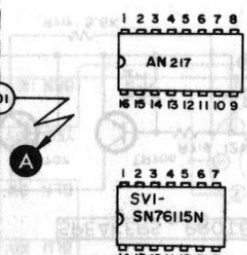
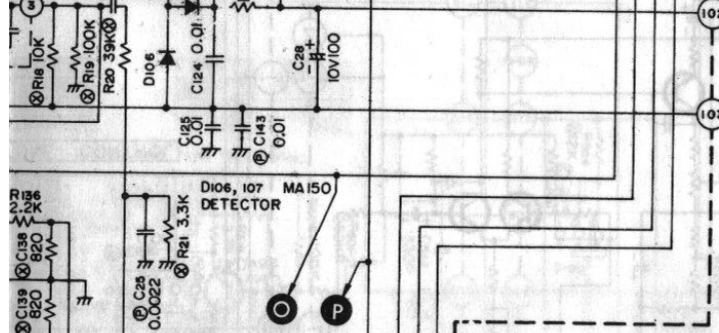
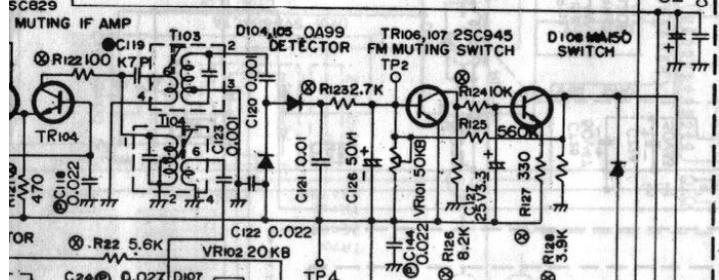
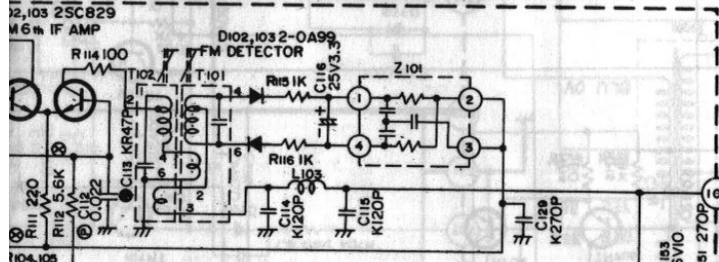
FM-TF
C 0 V
B -6.3 V
E -7 V

TR101

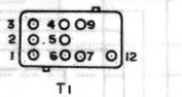
FM-TF
C 0 V
B -7.6 V
E -8.3 V



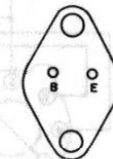
TR104		TR105		TR106		TR107	
C	-0.71	C	0	C	-8.54	C	-2.51
B	-3.47	B	-3.49	B	-7.94	B	-7.9
E	-4.20	E	-4.20	E	-8.58	E	-8.53



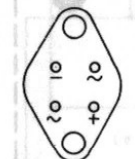
- 25C922
- 25C839
- 25A721
- 25A666A
- 25C828
- 25C829
- 25C945
- 25C1327
- 25C1573



25A837
25C1667



SVDA52H810

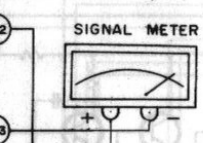


- VR101: FM Muting Level Adjustment
 - VR102: FM Meter Adjustment
 - VR103: PLL Voltage Control Oscillator Adjustment
 - VR104: Separation Adjustment
 - VR501: Balance Control
 - VR502-1, VR502-2: Volume Control
 - VR503-1, VR503-2: Treble Control
 - VR504-1, VR504-2: Bass Control
 - VR601: Main Amplifier Ica Adjustment
- ⊗ mark resistors are printed carbon resistors.

25A794
25C1567

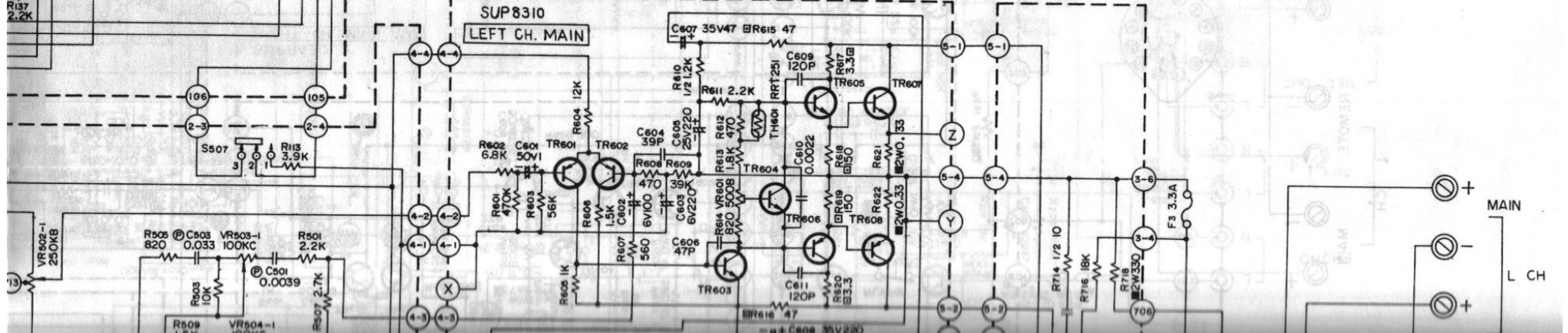


25A699



TR601		TR602		TR603		TR604		TR605		TR606		TR607		TR608	
C	-28.5	C	-27.5	C	-1.27	C	1.10	C	29.7	C	-29.8	C	29.7	C	-29.8
B	0	B	0	B	-28.5	B	-0.78	B	1.10	B	-1.27	B	0.58	B	-0.66
E	0.77	E	0.77	E	-29.3	E	-1.27	E	0.58	E	-0.66	E	0	E	0

- TR601, 602: 25A666A
- TR603: 25C1573
- TR604: 25C828
- TR605: 25C1567
- TR607: 25C1667



Schematic Diagram

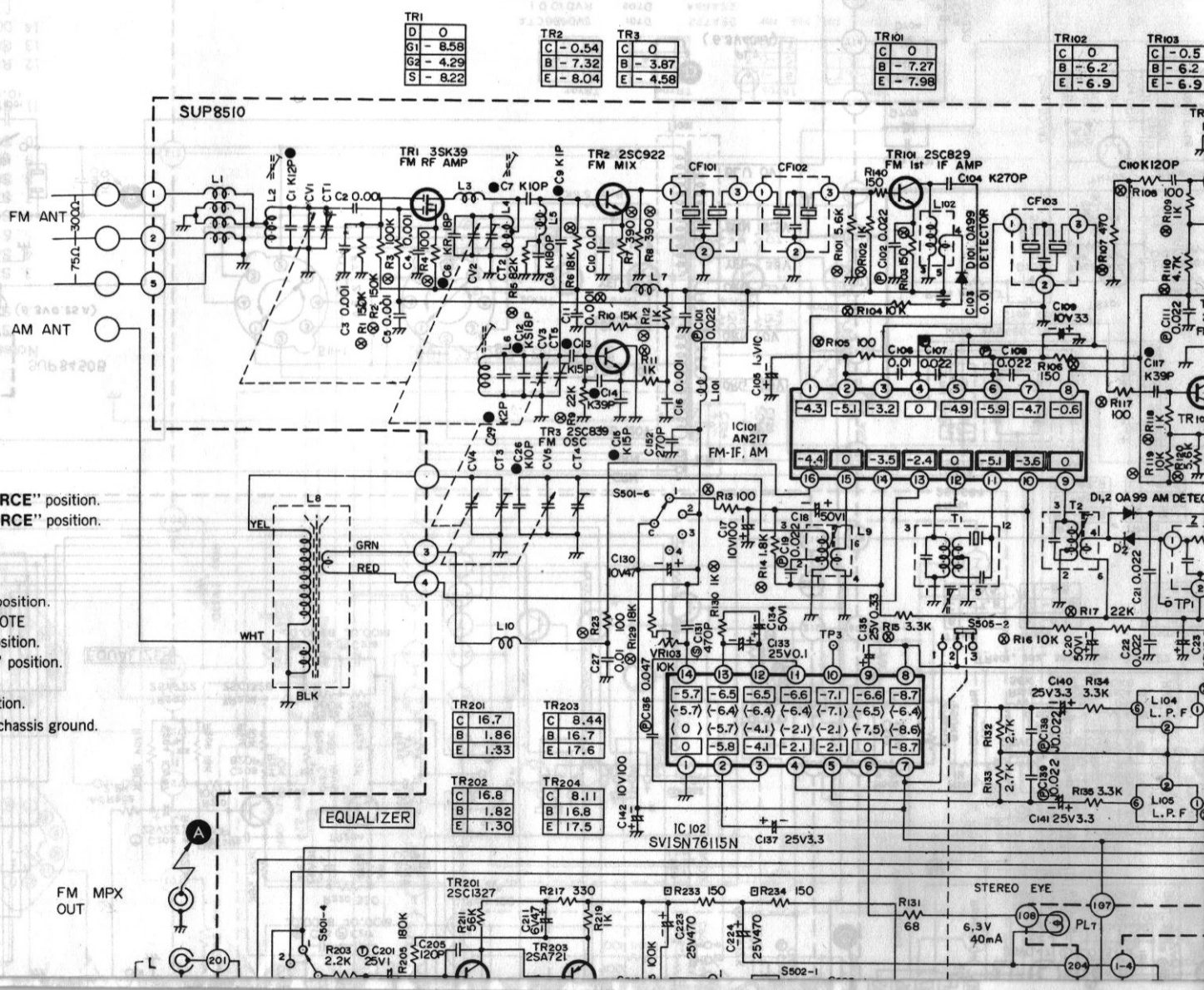
Model SA-5250

(This schematic diagram may be modified at any time)

Notes :

- S501-1~S501-8** : Selector switch in "AM" position.
AM ↔ FM AUTO ↔ PHONO ↔ AUX
- S502-1, S502-2** : Tape monitor (TAPE 1) switch in "SOURCE" position.
- S503-1, S503-2** : Tape monitor (TAPE 2) switch in "SOURCE" position.
- S505-1, S505-2** : Mode switch in "STEREO" position.
- S506-1, S506-2** : Loudness switch in "OFF" position.
- S507** : FM muting switch in "ON" position.
- S1001-1, S1001-2** : Speakers selector switch in "OFF" position.
OFF ↔ MAIN ↔ REMOTE ↔ MAIN + REMOTE
- S1002-1, S1002-2** : Power source switch in "OFF" position.
- S1003-1, S1003-2** : Voltage selector switch in "110V" position.
110V ↔ 120V ↔ 220V ↔ 240V
- RLY701** : Speakers protection relay in "NORMAL" position.
- DC voltage measurements are taken with DC VTVM from chassis ground.

- FM position
- AM position
- FM stereo signal reception



TR1	D	0
	G1	-6.58
	G2	-4.29
	S	-8.22

TR2	C	-0.54
	B	-7.32
	E	-8.04
TR3	C	0
	B	-3.87
	E	-4.58

TR101	C	0
	B	-7.27
	E	-7.98

TR102	C	0
	B	-6.2
	E	-6.9

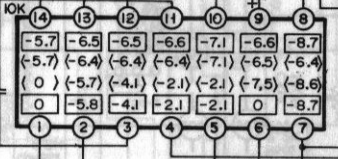
TR103	C	-0.5
	B	-6.2
	E	-6.9

TR201	C	16.7
	B	1.86
	E	1.33

TR203	C	8.44
	B	6.7
	E	17.6

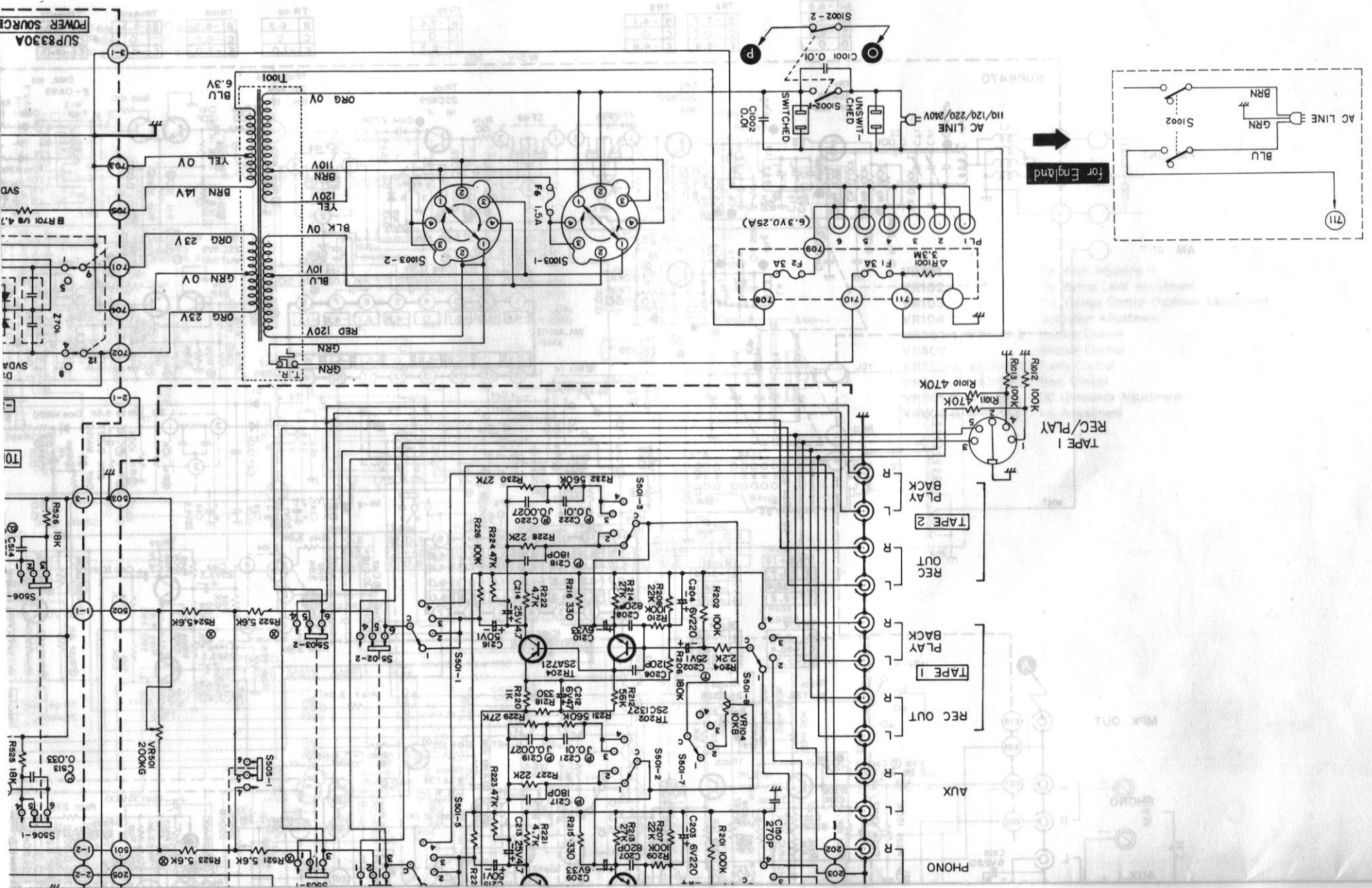
TR202	C	16.8
	B	16.8
	E	17.5

TR204	C	8.11
	B	16.8
	E	17.5



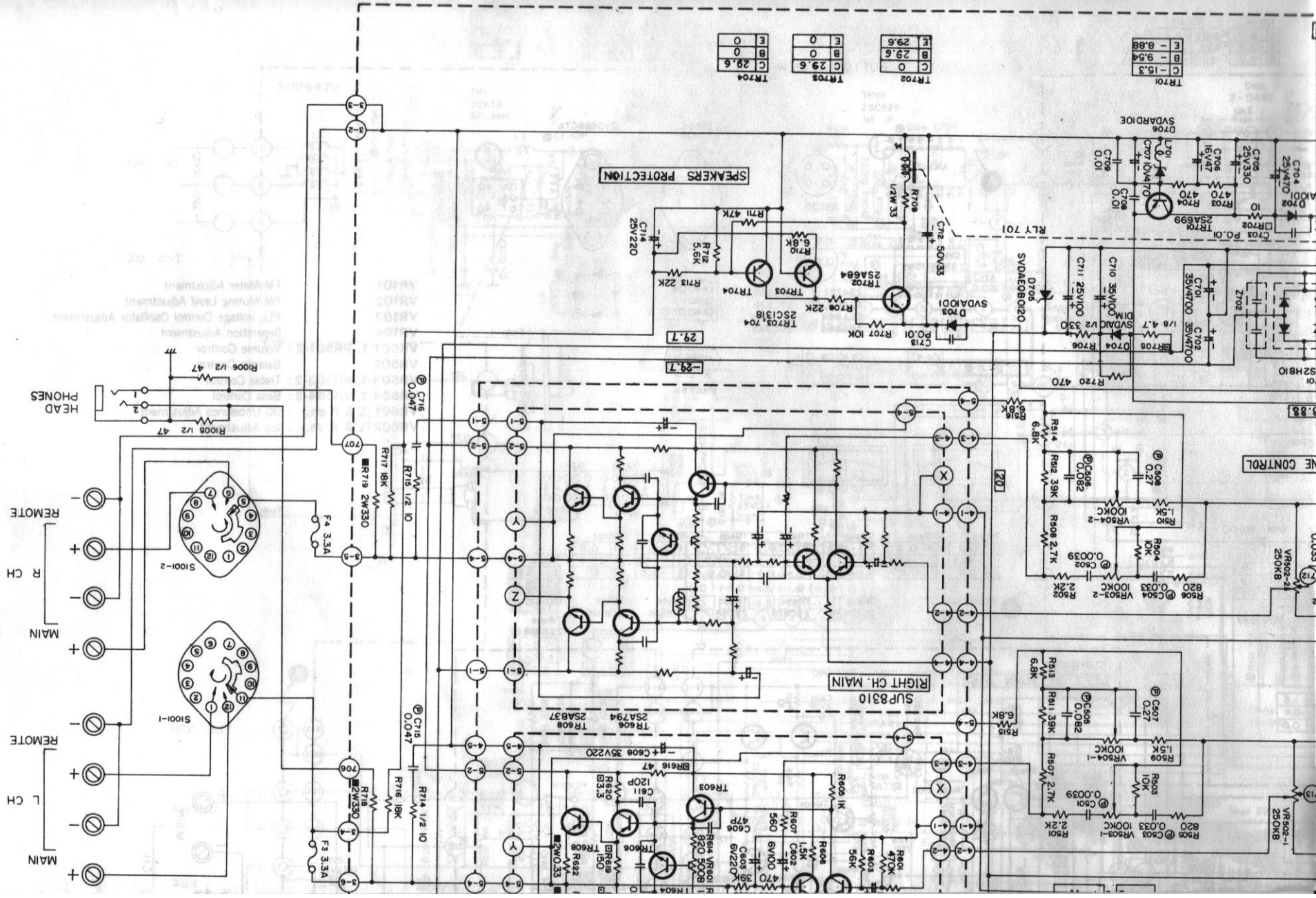
Model SA-550

Schematic Diagram

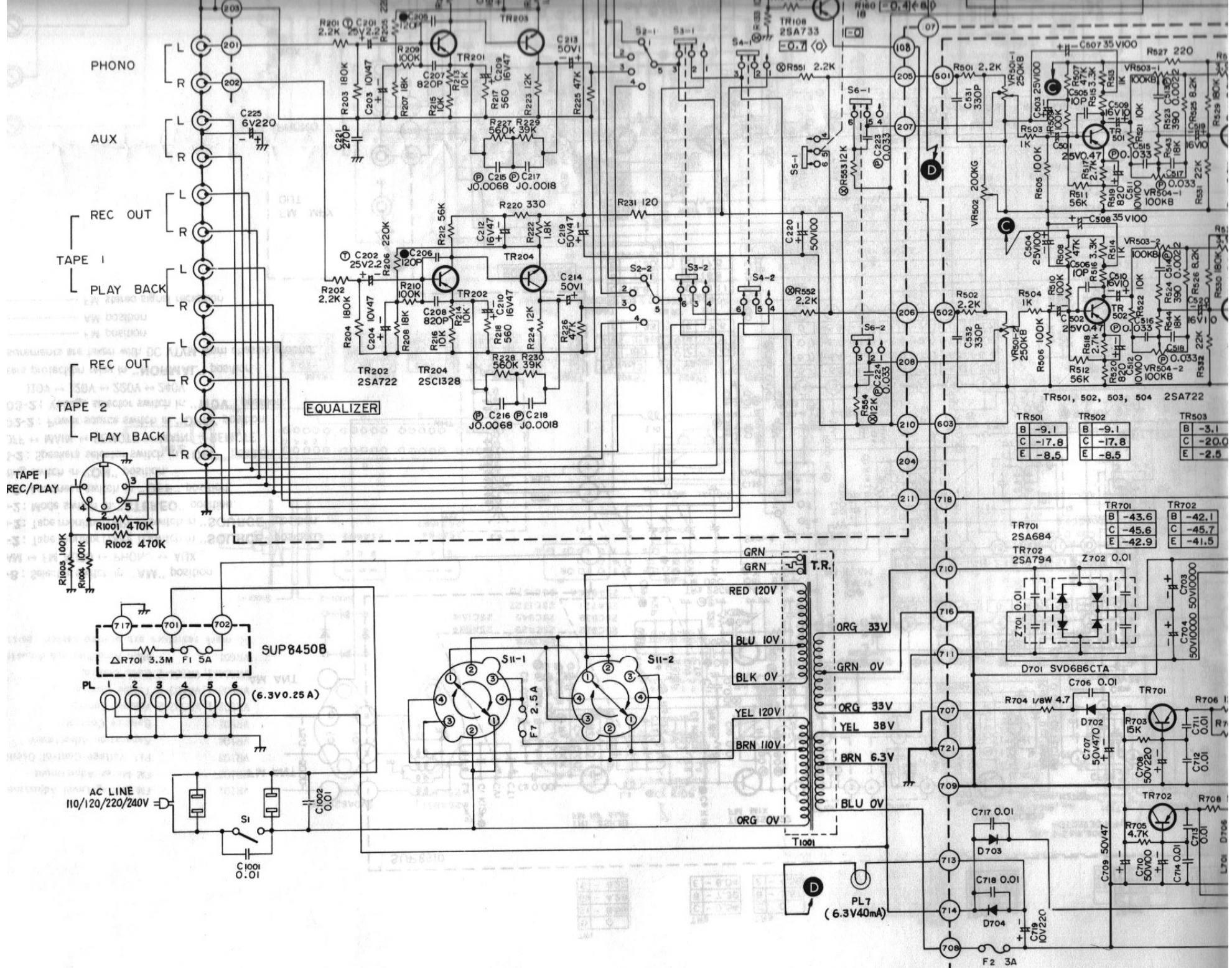


(This schematic diagram may be modified at any time)

FM	1	-48 V
	2	-52 V
	3	-21 V
	4	0 V
	5	-48 V
	6	-61 V
	7	-48 V
	8	-1.1 V



TR701	E	-8.88
	B	1-9.54
	C	15.3
	C	29.6
	E	0
TR702	C	0
	E	29.6
TR703	B	0
	E	0
TR704	C	29.6
	E	0



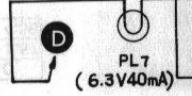
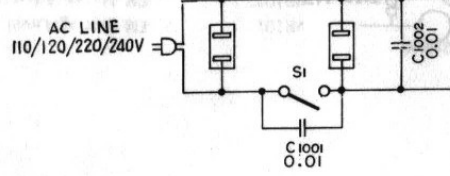
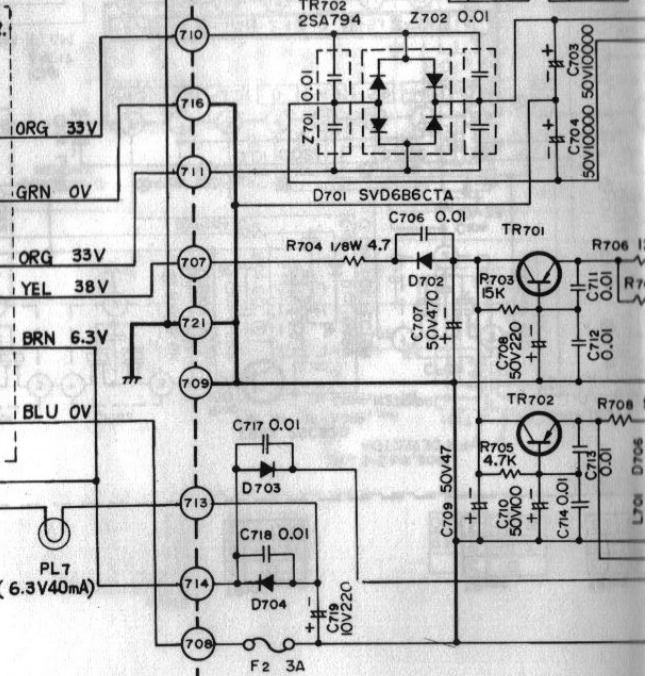
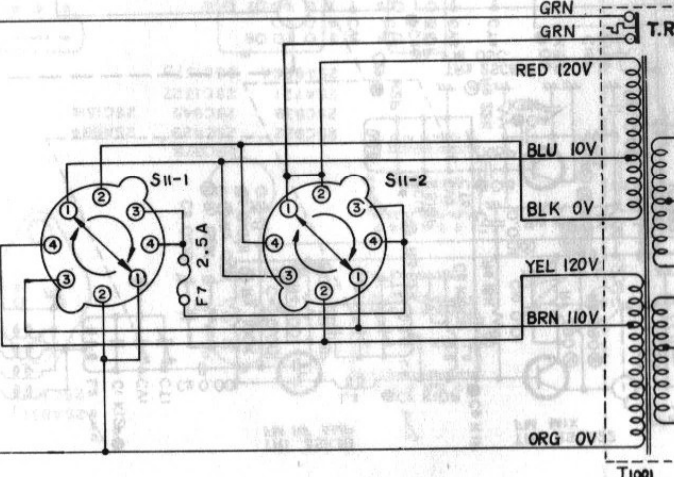
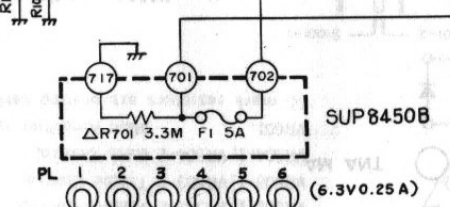
EQUALIZER

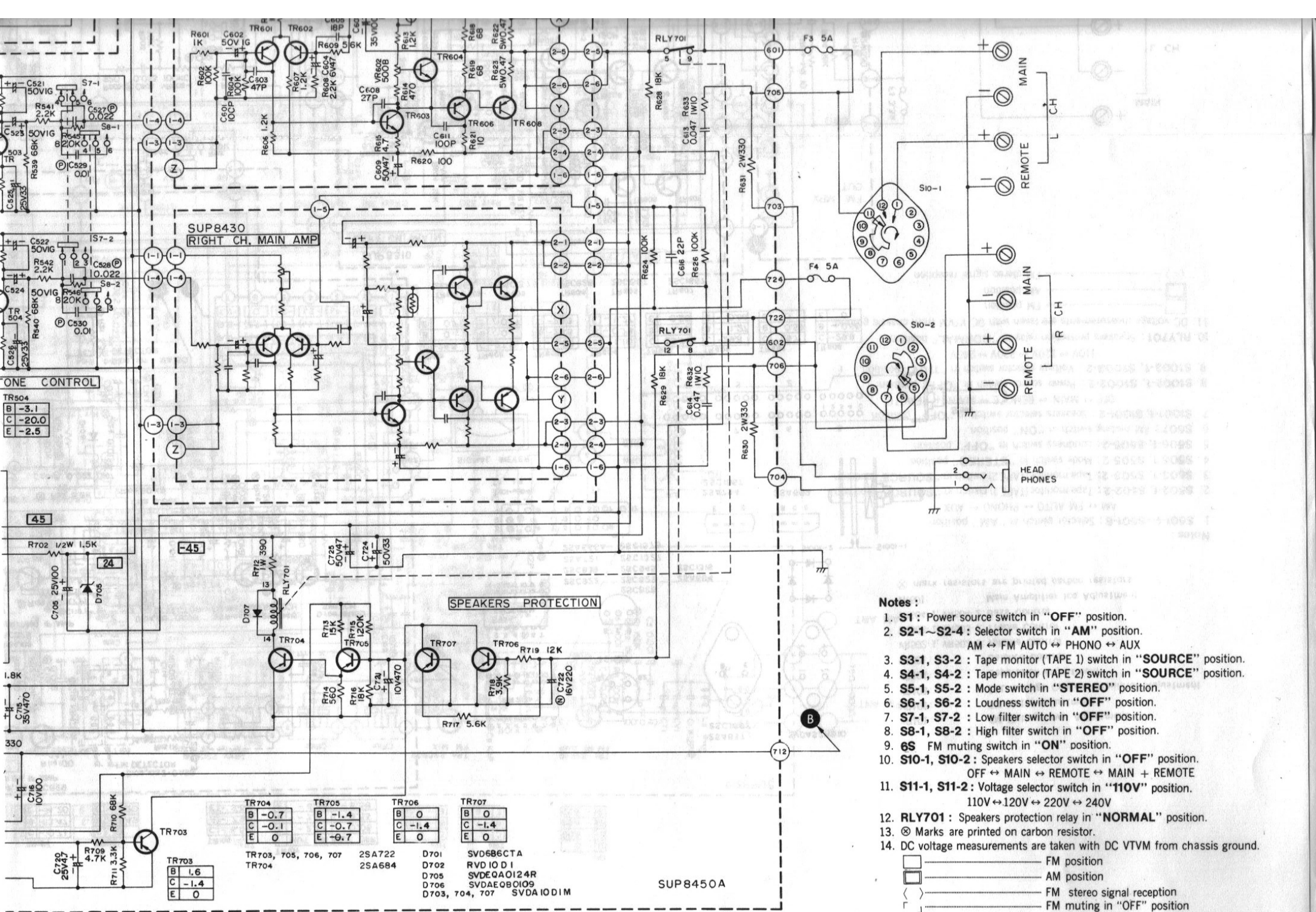
TR501, 502, 503, 504 2SA722

TR501	TR502	TR503
B -9.1	B -9.1	B -3.1
C -17.8	C -17.8	C -20.0
E -8.5	E -8.5	E -2.5

TR701	TR702
B -43.6	B -42.1
C -45.6	C -45.7
E -42.9	E -41.5

TR701 2SA684
TR702 2SA794





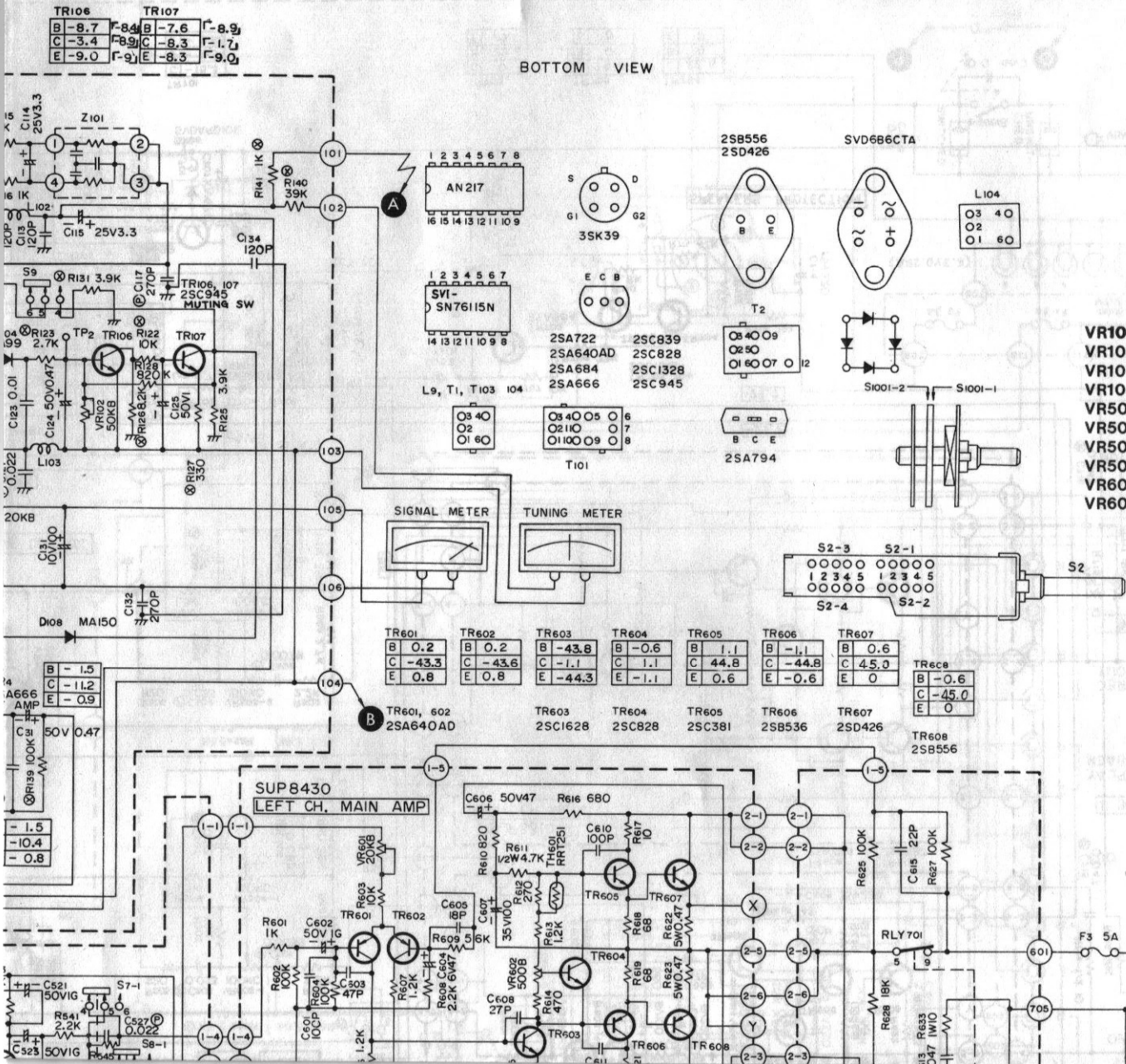
- Notes :**
- S1 :** Power source switch in "OFF" position.
 - S2-1~S2-4 :** Selector switch in "AM" position.
AM ↔ FM AUTO ↔ PHONO ↔ AUX
 - S3-1, S3-2 :** Tape monitor (TAPE 1) switch in "SOURCE" position.
 - S4-1, S4-2 :** Tape monitor (TAPE 2) switch in "SOURCE" position.
 - S5-1, S5-2 :** Mode switch in "STEREO" position.
 - S6-1, S6-2 :** Loudness switch in "OFF" position.
 - S7-1, S7-2 :** Low filter switch in "OFF" position.
 - S8-1, S8-2 :** High filter switch in "OFF" position.
 - 6S** FM muting switch in "ON" position.
 - S10-1, S10-2 :** Speakers selector switch in "OFF" position.
OFF ↔ MAIN ↔ REMOTE ↔ MAIN + REMOTE
 - S11-1, S11-2 :** Voltage selector switch in "110V" position.
110V ↔ 120V ↔ 220V ↔ 240V
 - RLY701 :** Speakers protection relay in "NORMAL" position.
 - ⊗ Marks are printed on carbon resistor.
 - DC voltage measurements are taken with DC VTVM from chassis ground.
- FM position
 AM position
 FM stereo signal reception
 FM muting in "OFF" position

TR703	TR704	TR705	TR706	TR707
B -1.6	B -0.7	B -1.4	B 0	B 0
C -1.4	C -0.1	C -0.7	C -1.4	C -1.4
E 0	E 0	E -0.7	E 0	E 0

TR703, 705, 706, 707 2SA722 D701 SVD686CTA
 TR704 2SA684 D702 RVD10DI
 D705 SVDEQA0124R
 D706 SVDAE0BCIO9
 D703, 704, 707 SVDA10DIM

SUP8450A

with the development of new technology)



- VR101 :** FM Meter Adjustment
- VR102 :** FM Muting Level Adjustment
- VR103 :** PLL Voltage Control Oscillator Adjustment
- VR104 :** Separation Adjustment
- VR501-1, VR501-2 :** Volume Control
- VR502 :** Balance Control
- VR503-1, VR503-2 :** Treble Control
- VR504-1, VR504-2 :** Bass Control
- VR601 (L & R ch.) :** DC Unbalance Adjustment
- VR602 (L & R ch.) :** Icq Adjustment

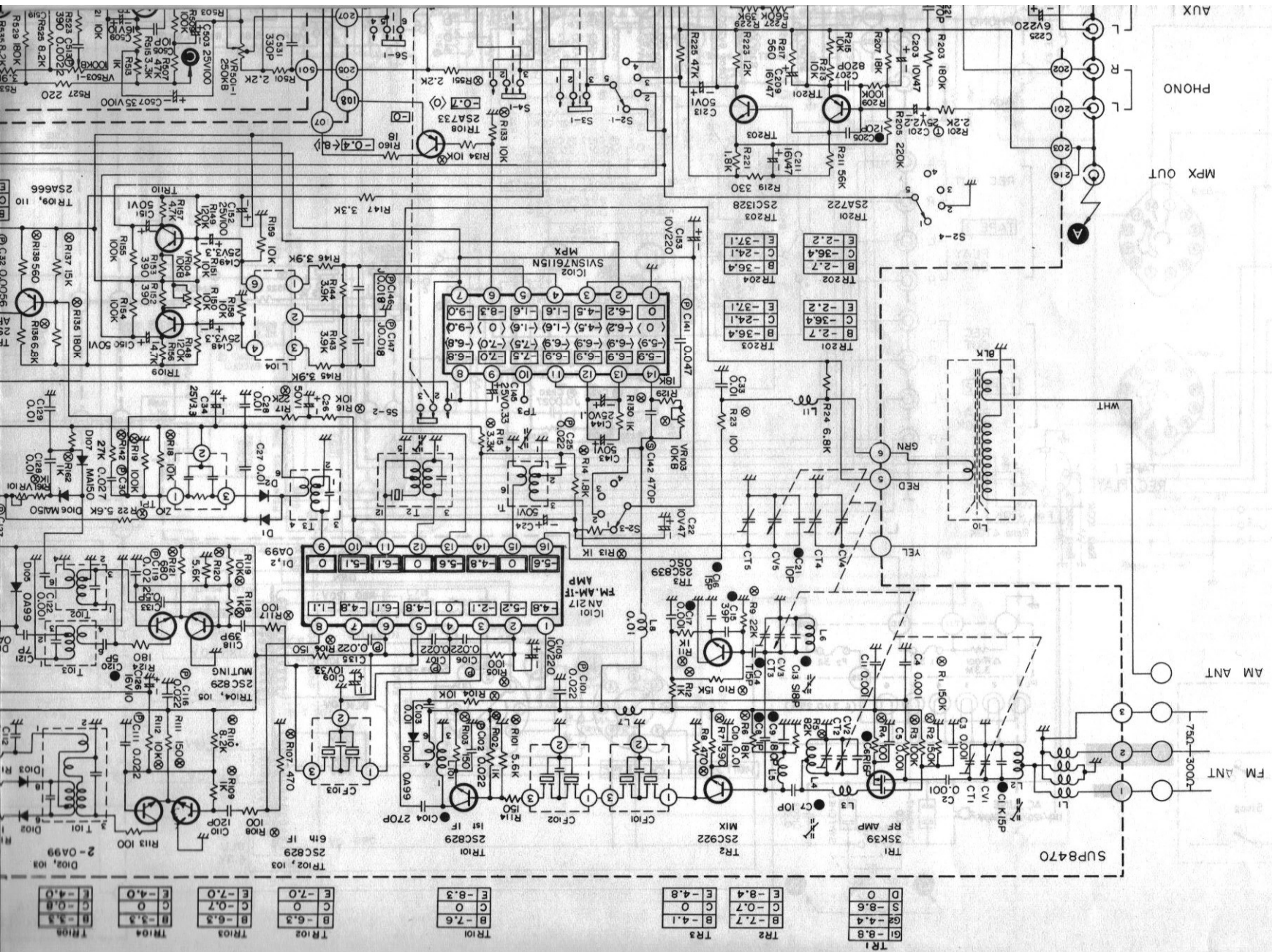
MAIN
CH

8	11	-	8
7	88	-	9
6	19	-	2
5	0	-	7
4	88	-	5
3	1	-	3
2	52	-	1
1	48	-	1
	FM		

Schematic Diagram

Model SA-5550

(This schematic diagram may be modified at any time)



AUX
PHONO
MPX OUT

FM ANT
AM ANT

SUP8470

D	0
S	-8.6
9	-4.4
8	-7.7
B	-4.1
C	0
E	-4.8

TR1	-8.8
TR2	-7.7
TR3	-4.1

TR10	-7.6
TR11	-8.3

TR102	-6.3
TR103	-7.0

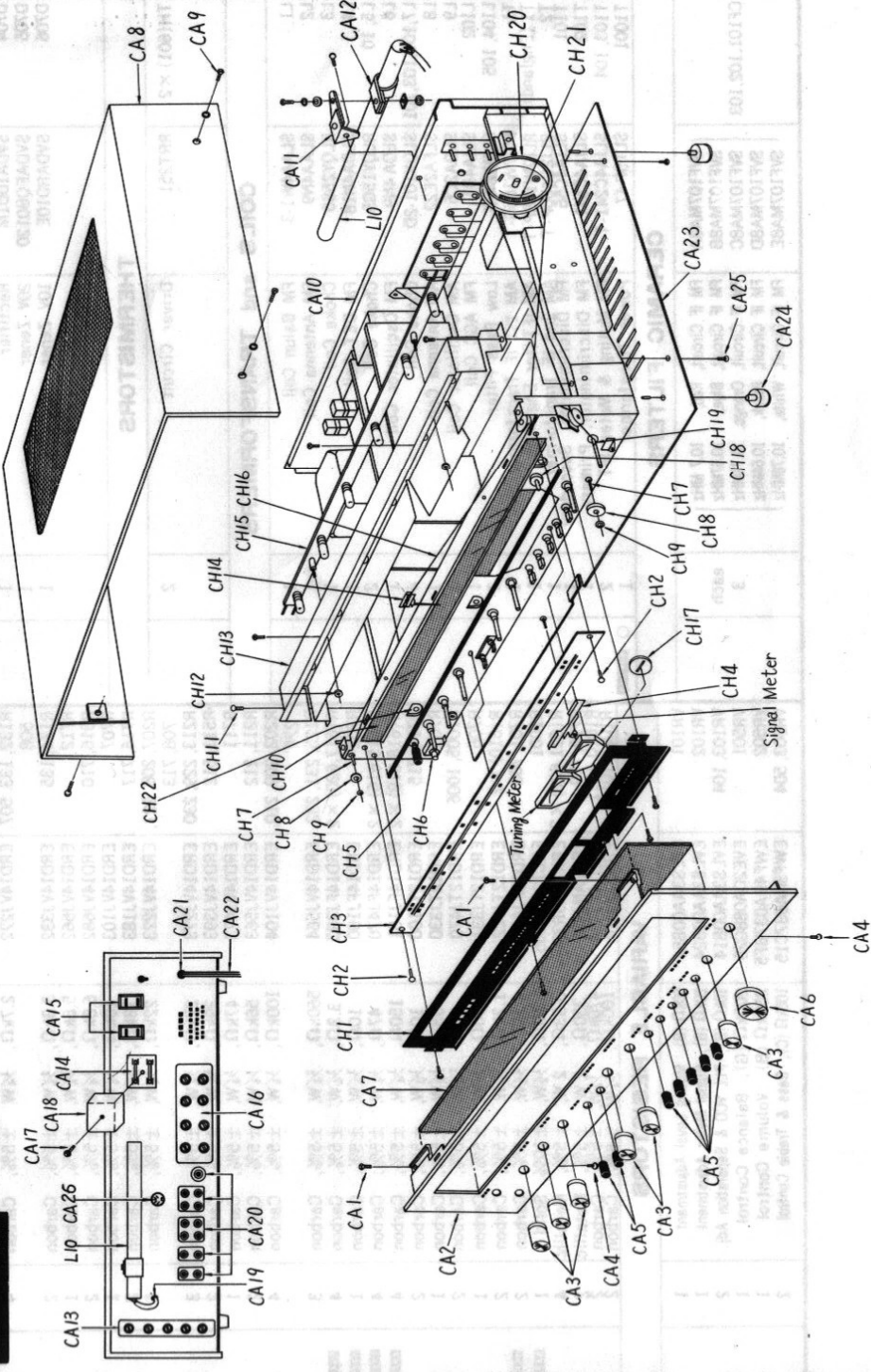
TR104	-3.3
TR105	-4.0

Top

Ref. No.	Part No.	Description	Per Set (Pcs.)	Remarks	Ref. No.	Part No.	Description	Per Set (Pcs.)	Remarks
CA8(BLK)	SKA7811	Cabinet (Black Wood)	1	○	CH19	SDTA10-2S	Tuning Shaft, with Flywheel	1	
CA9(BLK)	XS84+16FZS	Screw, Black Cabinet M'tg.	4		CH20	SDDA471S	Drum, Tuning	1	
CA9(BRN)	XS84+16BVCS	Screw, Brown Cabinet M'tg.	4		CH21	SDDA4121	Spring, Drum	1	
CA10	SGPA710-1A	Rear Panel	1	○	CH22	XXAR3H6S	Screw, Drum M'tg.	2	
CA11	SMA197	Mounting, AM Antenna Coil	1			SHRA919	Lock Pin, Dial Light Filter	3	
CA12	SMAA6-2	Band, AM Antenna Coil	1	○		SJSA65	Socket, Main Amp. p.c.b. Connector	4	
CA13	SJFA4501	Terminal, Ext. Antenna	1		ACCESSORIES				
CA14	SJFA5201-1	Holder, Circuit Protection Fuse	1		A1	SSAA3	FM Antenna Cord	1	
CA15	SJSA66-1	Socket, AC Outlet	2		A2	XBASA1A5001	Circuit Protection Fuse, 5A	2	
CA16	SJFA4803-1	Terminal, Speakers	1		A3	RJP5	Pin Plug	4	
CA17	XSN26+12	Screw, Fuse Cap M'tg.	1		A4	RJP16AS	AC Plug	4	
CA18	SJFA5202-1	Fuse Cap	1		A5	RJP17AS	AC Plug	1	
CA19	RHR106	Bushing, AM Antenna Lead Wire	1		PACKING PARTS				
CA20	SJFA3020-1	Terminal, Input & Tape Monitor	1		P1	SPPA14	Soft Cover	1	
CA21	RHR111	Bushing, AC Cord	1		P2	SPS5	Pad, AM Bar Antenna	1	
CA22	SJAA3-1	AC Cord	1		P3	SPP465	Polyethylene Bag	1	
(Holland)	RJP3A	AC Plug (Only for Holland)	1		P4	SPS7	Pad, Left Side	1	
CA23	SYU39	Bottom Board	1		P5	SPS9	Pad, Right Side	1	
CA24	SKL145	Leg	4		P6	SPS101	Pad, Bottom Side	1	
CA25	XTV3+8CR	Red Screw, Bottom Board M'tg.	8		P7	SPN5089	Carton Box, Inner	1	
CA26	XSN3+8RS	Red Screw, Bottom Board M'tg.	1		P8	SQF987	Printed Matter, Complete	1	
	RJS31-1	DIN Socket, Tape Monitor	1		P9	SPG519	Carton Box, Outer	1	
					P10	SPS103	Pad, Corner	4	
					P11	SPS105	Pad, Upper	1	
CHASSIS PARTS									
CH1	SDH113-1	Mounting, Meter & Dial Scale	1	○	PACKING PARTS (for Germany & Holland)				
CH2	SHRA916-1	Lock Pin, Dial Scale	2	○	P1	SPPA14	Soft Cover	1	
CH3	SKD2310	Dial Scale	1	○	P2	BPS5	Pad, AM Bar Antenna	1	
CH4	SMM10-1	Mounting, Meter	1	○	P3	SPP465	Polyethylene Bag	1	
CH5	SUW1	Mounting, Dial Scale	1	○	P4	SPS7	Pad, Left Side	1	
CH6	SJJA16	Jack, Headphones	1	○	P5	SPS9	Pad, Right Side	1	
CH7	RDY34	Pulley, Pulley	6		P6	SPS51	Pad, Bottom Side	1	
CH8	RDR20	Pulley, Dial Cord	5		P7	SPG521	Carton Box	1	
CH9	RNW150-2	Lock Washer, Pulley	5		P8(Germany)	SQF987	Printed Matter (only for Germany)	1	
CH10	SDU1	Filter, Dial Light	4	○	P9	Deletion	
CH11	XTV3+8CK	Black Screw, Lamp House M'tg.	4		P10	Deletion	
CH12	XNG3CS	Nut, Lamp Holder M'tg.	2	○	P11	Deletion	
CH13	SMP231	Lamp House	1						
CH14	SDPA8	Pointer, Dial	1						
CH15	SJSA206	Holder, Dial, Lamp	1						
CH16	SDZ051-1	Cord, Dial (230cm (90%"))	1	roll					
CH17	SLG51	Orange Filter, Stereo Indicator	1						
CH18	SHGA204	Bracket, Stereo, Eye	1						

SA-5550

CABINET & CHASSIS PARTS LOCATION



Ref. No.	Part No.	Description	Per Set (Pcs.)	Remarks	Ref. No.	Part No.	Description	Per Set (Pcs.)	Remarks
R505, 506, 509, 510	ERD14VJ104	100kΩ, 1/2W, ±5%, Carbon	4		C(604) × 2	ECEA6V47L	47μF, Electrolytic	2	
R529, 530	ERD14VJ184	180kΩ, 1/2W, ±5%, Carbon	2		C225	ECEA6V220L	220μF, Electrolytic	1	
R505, 206	ERD14VJ224	220kΩ, 1/2W, ±5%, Carbon	2		C109, 720	ECEA10V33L	33μF, Electrolytic	2	
R545, 546	ERD14VJ824	820kΩ, 1/2W, ±5%, Carbon	1		C22, 203, 204	ECEA10V47L	47μF, Electrolytic	3	
R228	ERD14VJ564	560kΩ, 1/2W, ±5%, Carbon	2		C131, 511, 512, 716	ECEA10V100L	100μF, Electrolytic	4	
R 617, 621) × 2	ERD14FJ100	100Ω, 1/2W, ±5%, Carbon	4		C105, 153, 719	ECEA10W220L	220μF, Electrolytic	3	
R 618, 619) × 2	ERD14FJ680	680Ω, 1/2W, ±5%, Carbon	2		C721	ECEA10V470L	470μF, Electrolytic	1	
R 620) × 2	ERD14FJ101	100Ω, 1/2W, ±5%, Carbon	2		C126, 509	ECEA16V10L	10μF, Electrolytic	5	
R706	ERD14FJ121	120Ω, 1/2W, ±5%, Carbon	1		510, 519, 520	ECEA16V47L	47μF, Electrolytic	4	
R527	ERD14FJ221	220Ω, 1/2W, ±5%, Carbon	2		C209 ~ 212	ECEA16N220	220μF, Non-Polar Electrolytic	1	
R(616) × 2	ERD12TJ472	47kΩ, 1/2W, ±5%, Carbon	2		C722	ECEA25V3R3L	3.3μF, Electrolytic	5	
R712	ERGLANJ391	390Ω, 1W, ±5%, Metallic	1		C114, 115, 148, 149, 34	ECEA25V33L	33μF, Electrolytic	2	
R704	ERD18FJ4R7	4.7kΩ, 1/2W, ±5%, Carbon	1		C525, 526	ECEA25V4R7L	4.7μF, Electrolytic	1	
R701	ERC12ZGK335	4.7Ω, 1/2W, ±5%, Solid	1		C720	ECEA25V100L	100μF, Electrolytic	4	
R630, 631	ERGANJ331	330Ω, 2W, ±5%, Metallic	2		705	ECEA35V100L	100μF, Electrolytic	4	
R708	ERGSANJ331	330Ω, 5W, ±5%, Metallic	2		C507, 508	ECEA35V470L	470μF, Electrolytic	1	
R632, 633	ERXIANJ100	100Ω, 1W, ±5%, Metallic	2		C715	ECEA50V1G	1μF, Electrolytic	14	
R(622, 623) × 2	ERF5AKR47	0.47Ω, 1W, ±10%, Non-Flammable Wire	4		C24, 26, 125				
R24	ERD14TJ682	6.8kΩ, 1/2W, ±5%, Carbon	1		143, 150, 151, 213, 214, 521, 522, 523, 524, (602) × 2				
R1001, 1002	ERD14TJ474	470kΩ, 1/2W, ±5%, Carbon	2		C724	ECEA50V33L	33μF, Electrolytic	1	
R1003, 1004	ERD14TJ104	100kΩ, 1/2W, ±5%, Carbon	2		C219, (606) × 2	ECEA50V47L	47μF, Electrolytic	5	

VARIABLE RESISTORS

Ref. No.	Part No.	Description	Per Set (Pcs.)	Remarks
R1001, 1002	EVL33AA00B24	20kΩ (B), Meter Adjustment	1	
R1003, 1004	EVL33AA00B54	50kΩ (B) Muting Level Adjustment	1	
R1005, 1006	EVL33AA00B14	10kΩ (B), VCO & Separation Adjustment	2	
R1007, 1008	EWF49A037BF5	250kΩ (B), Volume Control	1	
R1009, 1010	EVE2DA088G25	200kΩ (G), Balance Control	1	
R1011, 1012	EWF2QA0F30B15	100kΩ (B), Bass & Treble Control	2	
R1013, 1014	EVL50AA00B24	20kΩ (B), DC Unbalance Adjustment	2	
R1015, 1016	EVL50AA00B52	500Ω (B), ICQ Adjustment	2	

CAPACITORS

Ref. No.	Part No.	Description	Per Set (Pcs.)	Remarks
C133	ECDD1H0R5CC	0.5pF, 50WV, ±0.25pF, Ceramic	1	
C8	ECDD1H010CC	1pF, 50WV, ±0.25pF, Ceramic	1	
C129	ECDD1H050CC	5pF, 50WV, ±0.25pF, Ceramic	1	
C121	ECDD1H070DC	7pF, 50WV, ±0.5pF, Ceramic	4	
C7, 21, 505, 506	ECDD1H100KC	10pF, 50WV, ±10%, Ceramic	4	
C63, 636	ECDD1H220KC	22pF, 50WV, ±10%, Ceramic	2	
C1, 16	ECDD1H150KC	15pF, 50WV, ±10%, Ceramic	2	
C14	ECDD1H150KC	15pF, 50WV, ±10%, Ceramic	1	
C605, *2	ECDD1H180KC	18pF, 50WV, ±10%, Ceramic	2	
C6	ECDD1H180KC	18pF, 50WV, ±10%, Ceramic	2	
C13	ECDD1H180KS	18pF, 50WV, ±10%, Ceramic	1	
C15, 118	ECDD1H200KC	39pF, 50WV, ±10%, Ceramic	2	
C603, *2	ECDD1H470K	47pF, 50WV, ±10%, Ceramic	2	
C601, *2	ECDD1H301K	100pF, 50WV, ±10%, Ceramic	2	
C110, 112, 113, 134, 205, 206	ECDD1H21K	120pF, 50WV, ±10%, Ceramic	6	
C9	ECDD1H301K	180pF, 50WV, ±10%, Ceramic	1	
C104, 117, 119, 221	ECDD1H471K	270pF, 50WV, ±10%, Ceramic	4	
C608, *2	ECDD1H20K	27pF, 500WV, ±10%, Ceramic	2	
C1610, 611) × 2	ECDD1H301K	100pF, 500WV, ±10%, Ceramic	4	
C207, 208	ECDD1H20K	820pF, 50WV, ±10%, Ceramic	2	
C2, 3, 4, 5, 11, 17, 122	ECDD1H100PF	0.001μF, 50WV, ±0%, Ceramic	9	
(612) × 2				
C531, 532	ECDD1H20K	330pF, 50WV, ±10%, Ceramic	2	
C10, 27, 28, 31, 103, 123, 128, 129, 711, 712, 713, 714, 717	ECDD1H100PF	0.01μF, 50WV, ±10%, Ceramic	14	
718	ECDD1H20K	0.01μF, 500WV, ±100%, Ceramic	1	
C706	ECDD1H20K	0.01μF, 50WV, ±5%, Polyester	2	
C217, 218	ECDD1H20K	0.01μF, 50WV, ±10%, Polyester	2	
C513, 514	ECDD1H20K	0.01μF, 50WV, ±10%, Polyester	2	
C215, 216	ECDD1H20K	0.01μF, 50WV, ±5%, Polyester	2	
C32	ECDD1H20K	0.01μF, 50WV, ±10%, Polyester	1	
C529, 530	ECDD1H20K	0.01μF, 50WV, ±10%, Polyester	2	
C25, 101, 102, 106, 107, 108, 111, 116, 135, 119, 127, 527, 528	ECDD1H20K	0.01μF, 50WV, ±10%, Polyester	13	
C146, 147	ECDD1H20K	0.01μF, 50WV, ±5%, Polyester	2	
C30	ECDD1H20K	0.01μF, 50WV, ±10%, Polyester	1	
C223, 224, 515, 516, 517, 518	ECDD1H20K	0.01μF, 50WV, ±10%, Polyester	6	
C141, 613, 614	ECDD1H20K	0.01μF, 250VAC, ±20%, Styrol	3	
C1001, 1002	ECDD1H20K	0.01μF, 25WV, ±5%, Styrol	2	
C142	ECDD1H20K	0.01μF, 25WV, ±5%, Styrol	1	

VARIABLE CAPACITORS

Ref. No.	Part No.	Description	Per Set (Pcs.)	Remarks
CV1 ~ 5	ECV5MX25X20G	Tuning Gang, AM/FM (with Trimmer)	1	
(CT1 ~ 4)				
CT3	ECV1ZW06P35	FM OSC Trimmer, 6pF	1	

COMPONENT COMBINATIONS

Ref. No.	Part No.	Description	Per Set (Pcs.)	Remarks
Z1	EXAF203Z471	AM Detector	1	
Z101	EXASDL04C	FM Detector	1	
Z701, 702	RXAF103P22HD	Hum Cancel, 0.01μF (× 2), Ceramic	2	

SWITCHES

Ref. No.	Part No.	Description	Per Set (Pcs.)	Remarks
S1	ESB7036	Power Source Switch	1	
S2	SSR33	Selector Switch	1	
S3, 4, 5, 6, 9	SSHA60S	Mode, Tape Monitor, Muting & Loudness Push Switches	1	
S7, 8	SSHA56S	Low & High Filter Switch	1	
S10	ESRC124F30CE	Speakers Switch	1	
S11	SSRA7-1S	Voltage Selector Switch	1	

RELAY and METERS

Ref. No.	Part No.	Description	Per Set (Pcs.)	Remarks
RLV701	SSVA1	Speakers Protection Relay	1	
	SSMA25-2	Signal Meter	1	
	SSMA26-2	FM Tuning Meter	1	

FUSES and LIGHTS

Ref. No.	Part No.	Description	Per Set (Pcs.)	Remarks
F1	XBA2K50NS5	5A Fuse, Power Source	1	
F2	XBAS1B30001	3A Fuse, Power Source	1	
F3, 4	XBAS1A5001	5A Fuse, Circuit Protection	2	
F7	XBA2K25NS5	2.5A Fuse, Power Source	1	
PL1 ~ 6	XAM35K	Dial Lamp, 6.3V 0.25A	6	
PL7	XAMR38S150A	Stereo Eye, 6.3V 40mA	1	

CABINET PARTS

Ref. No.	Part No.	Description	Per Set (Pcs.)	Remarks
CA1	XTS3+8BK	Black Screw, Panel M'tg.	2	
CA2	SGW6310	Front Panel	1	
CA3	SBNA116E	Knob, Speakers, Bass, Treble, Volume, Balance & Selector	6	
CA4	XTV3+8CK	Black Screw, Panel M'tg.	2	
CA5	SBCA56	Button, Push Switches	7	
CA6	SBNA131E	Knob, Tuning Control	1	
CA7	SGU1	Glass Plate	1	
CA8 (BRN)	SKA7810	Cabinet (Brown Wood)	1	

NOTES: 1. Part numbers are indicated on most mechanical parts. Please use this part number for parts orders.
 2. **SAFETY** Indicates that only parts specified by the manufacturer be used for replacement in critical circuits.

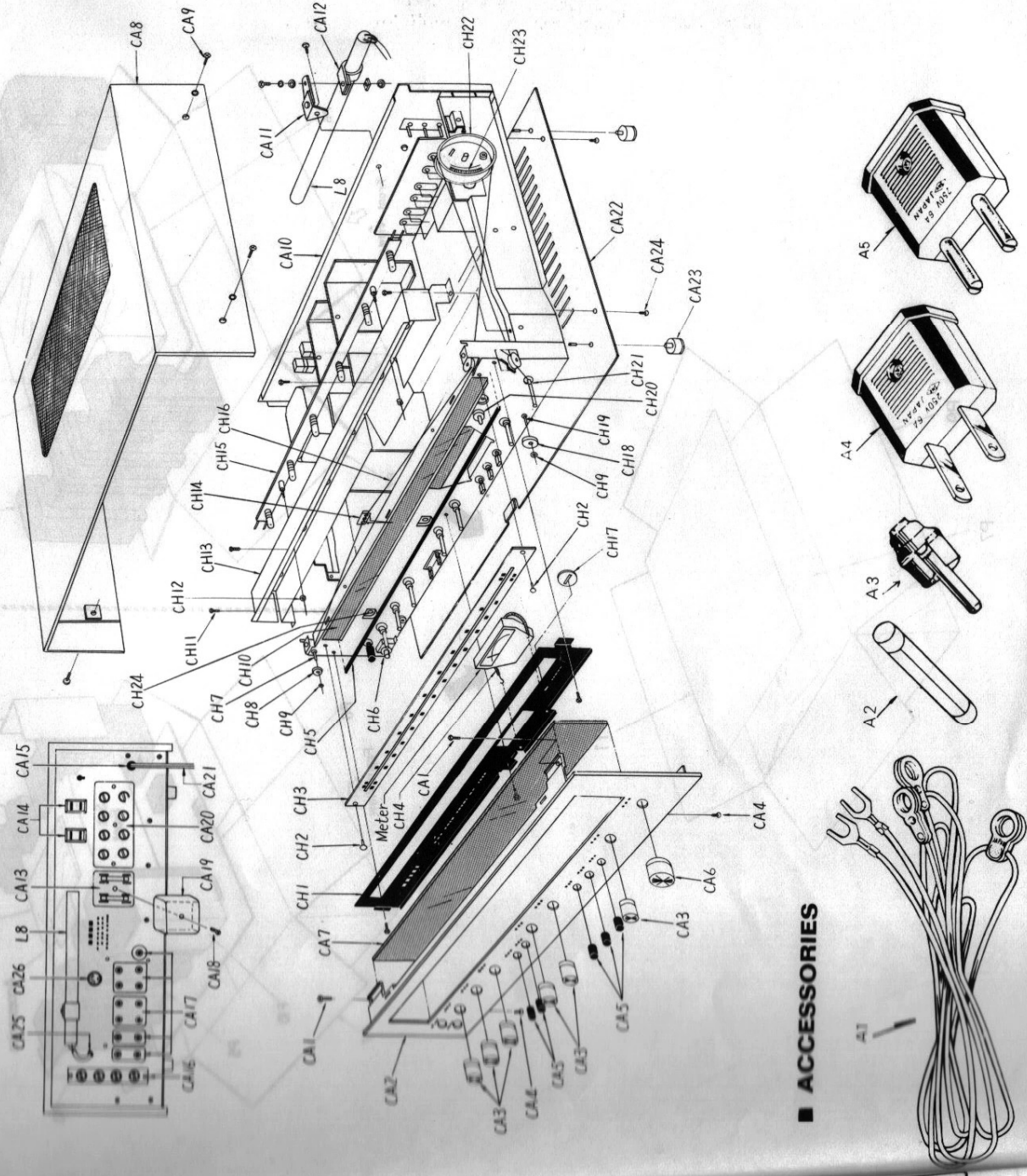
Ref. No.	Part No.	Description	Per Set (Pcs.)	Remarks	Ref. No.	Part No.	Description	Per Set (Pcs.)	Remarks
INTEGRATED CIRCUITS									
IC101	AN217BB	FM IF, AM RF & AM IF Amplifier	1		R131	ERD14TJ681	±5%,	1	Carbon
IC102	SV1SN76115N	PLL Type FM MPX	1		R234	ERD14TJ151	±5%,	1	Carbon
					R215, 216, 218	ERD14TJ331	±5%,	3	Carbon
					R(608,612) × 2	ERD14TJ471	±5%,	5	Carbon
					720				
					R(607) × 2	ERD14TJ561	±5%,	2	Carbon
					R(614) × 2	ERD14TJ821	±5%,	2	Carbon
					R219, 220	ERD14TJ102	±5%,	4	Carbon
					(605) × 2				
					R(610) × 2	ERD14TJ122	±5%,	2	Carbon
					R(606) × 2	ERD14TJ152	±5%,	2	Carbon
					R(613) × 2	ERD14TJ182	±5%,	2	Carbon
					R203(611) × 2	ERD14TJ222	±5%,	3	Carbon
					R113	ERD14TJ392	±5%,	2	Carbon
					R221, 222	ERD14TJ472	±5%,	1	Carbon
					R513, 514, 515	ERD14TJ682	±5%,	5	Carbon
					(602) × 2				
					R503, 504	ERD14TJ103	±5%,	2	Carbon
					R525, 526	ERD14TJ183	±5%,	2	Carbon
					R(604) × 2	ERD14TJ123	±5%,	2	Carbon
					R228	ERD14TJ223	±5%,	1	Carbon
					R214	ERD14TJ273	±5%,	1	Carbon
					R(609) × 2	ERD14TJ393	±5%,	1	Carbon
					R223, 224	ERD14TJ473	±5%,	2	Carbon
					R(603) × 2	ERD14TJ563	±5%,	2	Carbon
					R201, 225	ERD14TJ104	±5%,	2	Carbon
					R205, 206	ERD14TJ184	±5%,	2	Carbon
					R(601) × 2	ERD14TJ474	±5%,	2	Carbon
					R114	ERD14VJ101	±5%,	1	Carbon
					R140, 233	ERD14VJ151	±5%,	1	Carbon
					R217	ERD14VJ331	±5%,	1	Carbon
					R703, 704	ERD14VJ471	±5%,	2	Carbon
					R505, 506	ERD14VJ821	±5%,	2	Carbon
					R115, 116	ERD14VJ102	±5%,	2	Carbon
					R509, 510	ERD14VJ152	±5%,	2	Carbon
					R204, 501, 502	ERD14VJ222	±5%,	3	Carbon
					R132, 133, 507, 508	ERD14VJ272	±5%,	4	Carbon
					R134, 135	ERD14VJ332	±5%,	2	Carbon
					R712	ERD14VJ562	±5%,	1	Carbon
					R515, 710	ERD14VJ682	±5%,	2	Carbon
					R707	ERD14VJ103	±5%,	1	Carbon
					R716, 717	ERD14VJ183	±5%,	2	Carbon
					R207, 208, 227, 708, 713	ERD14VJ223	±5%,	5	Carbon
					R213, 229, 230	ERD14VJ273	±5%,	3	Carbon
					R511, 512	ERD14VJ393	±5%,	1	Carbon
					R711	ERD14VJ473	±5%,	2	Carbon
					R211, 212	ERD14VJ563	±5%,	2	Carbon
					R202, 209, 210, 226	ERD14VJ104	±5%,	4	Carbon
					R125, 231, 232	ERD14VJ564	±5%,	3	Carbon
					R(617,620) × 2	ERD14FJ383	±5%,	4	Carbon
					R702	ERD14FJ100	±5%,	1	Carbon
					R(615,616) × 2	ERD14FJ470	±5%,	4	Carbon
					R(618,619) × 2	ERD14FJ151	±5%,	4	Carbon
					R714, 715	ERD12TJ100	±5%,	2	Carbon
					R709	ERD12TJ330	±5%,	1	Carbon
					R1005, 1006	ERD12TJ470	±5%,	2	Carbon
					R706	ERD12TJ331	±5%,	1	Carbon
					R(610) × 2	ERD12TJ122	±5%,	2	Carbon
					R701, 705	ERD18FJ477	±5%,	2	Carbon
					R1001	ERC12ZGK335	±5%,	2	Carbon
					R(621,622) × 2	ERX2ANJR33	±5%,	4	Metalllic
					R718, 719	ERG2ANJ331	±5%,	1	Carbon
					R1010, 1011	ERD14TJ474	±5%,	2	Carbon
					R1012, 1013	ERD14TJ104	±5%,	2	Carbon
VARIABLE RESISTORS									
					VR101	EVL53AA00B54	50kΩ (B),	1	Muting Level Adjustment
					VR102	EVL53AA00B24	20kΩ (B),	1	Signal Meter Adjustment
					VR103, 104	EVL53AA00B14	10kΩ (B),	2	PLL VCO & Separation Adj.
					VR501	EVE2DA088G25	200kΩ (G),	1	Balance Control
					VR502	EWF49A037BF5	250kΩ (B),	1	Volume Control
					VR503, 504	EWFSNA037C15	100kΩ (C),	2	Bass & Treble Control
COILS and TRANSFORMERS									
L1	SLAA4W1-3	FM Balun Coil	1						
L2	SLAA4N9	FM Antenna Coil	1						
L3	RLQY25S5	Choke Coil	1						
L4	SLDA4N18	FM DET Coil	1						
L5, 10	RLQY15G5	Choke Coil	2						
L6	SLOA4N9	FM Oscillator Coil	1						
L7,101,103,701	SLQX101-2D	Choke Coil	4						
L8	SLFA2E22	AM Antenna Coil	1						
L9	SLOA2C6	AM Oscillator Coil	1						
LI02	SLIA4B1	FM AGC Coil	1						
LI04, 105	SLM1Z7-K	Low Pass Filter	2						
T1	RLI7W105S-T	AM 1st IF Transformer	1						
T1 (England)	RLI7W108P-T	AM IFT (for England)	1						
T2	RLI2C450P-T	AM 2nd IF Transformer	1						
T101	SLIA4C56	FM Discriminator, Secondary	1						
T102	SLIA4C541	FM Discriminator, Primary	1						
T103, 104	SLIA4C241-T	FM Muting & Meter IFT	2						
T1001	SLT5P47	Power Transformer	1						
CERAMIC FILTERS									
CF101, 102, 103	SVF107MA8A	FM IF Circuit, Red, 10.7 MHz	each						
	SVF107MA8B	FM IF Circuit, Blue, 10.67MHz							
	SVF107MA8C	FM IF Circuit, Orange, 10.73MHz	3						
	SVF107MA8D	FM IF Circuit, Black, 10.64MHz							
	SVF107MA8E	FM IF Circuit, White, 10.76MHz							

Ref. No.	Part No.	Description	Per Set (Pcs.)	Remarks	Ref. No.	Part No.	Description	Per Set (Pcs.)	Remarks
VR (601) × 2	EVL50AA00B52	500Ω (B), ICQ Adjustment	2		Z1	AM Detector			
					Z101	FM Detector			
					Z701, 702	Hum Cancel, 0.01μF(×2), 500WV			
CAPACITORS									
C9	ECCD1H010CC	1pF, 50WV, ±0.25pF, Ceramic	1		S501	Selector Switch			
C29	ECCD1H020CC	2pF, 50WV, ±0.25pF, Ceramic	1		S502, 503, 505	Tape 1, 2 & Mode Switch			
C119	ECCD1H070DC	10pF, 50WV, ±0.5pF, Ceramic	1		S506, 507	Loudness & Muting Switch			
C7, 26	ECCD1H100KC	10pF, 50WV, ±10%, Ceramic	2		S1001	Speakers Selector Switch			
C1	ECCD1H120KC	12pF, 50WV, ±10%, Ceramic	1		ESRC124F30CE	Power Switch (with Button)			
C13, 15	ECCD1H150KC	15pF, 50WV, ±10%, Ceramic	2		ESB7040T	Power Switch (for England)			
C6	ECCD1H180KR	18pF, 50WV, ±10%, Ceramic	1		S1002	Voltage Selector Switch			
C12	ECCD1H180KS	18pF, 50WV, ±10%, Ceramic	1		S1003				
C14, 117	ECCD1H390KC	39pF, 50WV, ±10%, Ceramic	2						
C(604) × 2	ECCD1H390K	39pF, 50WV, ±10%, Ceramic	2						
C113	ECCD1H470KR	47pF, 50WV, ±10%, Ceramic	1		SSYA1	Speaker Protection Relay			
C(606) × 2	ECCD1H330K	33pF, 50WV, ±10%, Ceramic	2		SSMA25-2	Signal Meter			
C110, 114, 115, 215, 206	ECCD1H121K	120pF, 50WV, ±10%, Ceramic	5						
C8, 217, 218	ECCD1H181K	180pF, 50WV, ±10%, Ceramic	3						
C104, 129, 150, 151, 152	ECCD1H271K	270pF, 50WV, ±10%, Ceramic	5						
C(609, 611) × 2	ECCD2H121K	120pF, 500WV, ±10%, Ceramic	4						
C207, 208	ECKD1H821KB	820pF, 50WV, ±10%, Ceramic	2						
C2, 3, 4, 5, 11, 16, 120, 123	ECKD1H102PF	0.001μF, 50WV, ±10%, Ceramic	8						
C(610) × 2	ECKD1H222PF	0.002μF, 50WV, ±10%, Ceramic	2						
C10, 103, 106, 121, 124, 703, 708, 709, 713	ECKD1H103PF	0.01μF, 50WV, ±10%, Ceramic	9						
C21, 22, 122	ECKD1H23PF	0.022μF, 50WV, ±10%, Ceramic	3						
C27, 125	ECKD2H103PF	0.01μF, 50WV, ±10%, Ceramic	2						
C1001	ECQJ2A103M	0.01μF, 250VAC, ±20%, Polyester	1						
C25	ECQW05222KZ	0.0022μF, 50WV, ±5%, Polyester	2						
C219, 220	ECQW05272JZ	0.0027μF, 50WV, ±5%, Polyester	2						
C501, 502, 511, 512	ECQW05392KZ	0.0039μF, 50WV, ±10%, Polyester	4						
C221, 222	ECQW05103JZ	0.01μF, 50WV, ±5%, Polyester	2						
C143	ECQW05103KZ	0.01μF, 50WV, ±10%, Polyester	1						
C19,101,102,107,108,111,112,118,144,138,139	ECQW05223KZ	0.022μF, 50WV, ±10%, Polyester	11						
C24	ECQW05273KZ	0.027μF, 50WV, ±10%, Polyester	1						
C503, 504, 513, 514	ECQW05333KZ	0.033μF, 50WV, ±10%, Polyester	4						
C136, 715, 716	ECQW05473KZ	0.047μF, 50WV, ±10%, Polyester	3						
C505, 506	ECQW05823KZ	0.082μF, 50WV, ±10%, Polyester	2						
C507, 508	ECQW05274KZ	0.027μF, 50WV, ±10%, Polyester	2						
C1002	ECQJ2A103M	0.01μF, 250VAC, ±20%, Polyester	1						
C131	ECQS1471JZ-K	470pF, 125WV, ±5%, Styrol	1						
C209, 210	ECEAGV33L	33μF, 6.3WV, Electrolytic	2						
C211, 212	ECEAGV47L	47μF, 6.3WV, Electrolytic	2						
C(602) × 2	ECEAGV100L	100μF, 6.3WV, Electrolytic	2						
C203, 204, (603) × 2	ECEAGV220L	220μF, 6.3WV, Electrolytic	4						
C109	ECEA10V33L	33μF, 10WV, Electrolytic	1						
C130	ECEA10V47L	47μF, 10WV, Electrolytic	1						
C17, 28, 142	ECEA10V100L	100μF, 10WV, Electrolytic	3						
C707	ECEA10V470L	470μF, 10WV, Electrolytic	1						
C105, 153, 250	ECEA16V10L	10μF, 16WV, Electrolytic	3						
C706	ECEA16V47L	47μF, 16WV, Electrolytic	1						
C23, 116, 127, 137, 140, 141	ECEA25V3R3L	3.3μF, 25WV, Electrolytic	6						
C213, 214	ECEA25V4R7L	4.7μF, 25WV, Electrolytic	2						
C711	ECEA25V100L	100μF, 25WV, Electrolytic	1						
C705, 714, (605) × 2	ECEA25V220L	220μF, 25WV, Electrolytic	4						
C223, 224, 704	ECEA25V470L	470μF, 25WV, Electrolytic	3						
C(607) × 2	ECEA35V47L	47μF, 35WV, Electrolytic	2						
C710	ECEA35V100L	100μF, 35WV, Electrolytic	1						
C(608) × 2	ECEA35V220L	220μF, 35WV, Electrolytic	2						
C18, 20, 126, 134, 215, 216, (601) × 2	ECEA50V1G	1μF, 50WV, Electrolytic	8						
C712	ECEA50V33L	33μF, 50WV, Electrolytic	1						
C133	ECAG25ER1X	0.1μF, 25WV, Electrolytic	1						
C135	ECAG25ER33X	0.33μF, 25WV, Electrolytic	1						
C201, 202	ECSZ25EF1	1μF, 25WV, Electrolytic	2						
C701, 702	ECE135R4700Y	4700μF, 35WV, Electrolytic	2						
VARIABLE CAPACITORS									
CV1-5 (CT1-4)	ECV5MX25X20G	Tuning Gang, AM/FM (with Trimmer)	1						
CT5	ECV1ZW06P35	FM OSC Trimmer, 6pF	1						
COMPONENT COMBINATIONS									

Ref. No.	Part No.	Description	Per Set (Pcs.)	Remarks	Ref. No.	Part No.	Description	Per Set (Pcs.)	Remarks
CH20	SHGA204	Rubber Cushion, Stereo Eye	1		P5	SPS3	Pad, Right Side	1	
CH21	SDT1A10-2S	Tuning Shaft, with Flywheel	1		P6	SPS13	Pad, Bottom Board	1	
CH22	SDDA471S	Drum, Tuning	1		P7	SPN5085	Carton Box, Inner	1	
CH23	SDDA4121	Spring, Drum	1		P8	SQF979	Printed Matter, Complete	1	
	XXAR346S	Screw, Drum M'tg.	2		P9	SPG511	Carton Box, Outer	1	
	SJS5405	4pin Socket, Lead Connector	2		P11	SPNA187	Pad, Upper Carton	1	
	SJS5603	6pin Socket, Lead Connector	1						
CH24	SJS41	Pin Clamp (SJS5405, SJS5603)	14						
	SHR4919	Lock Pin, Dial Light Filter	3						
ACCESSORIES									
A1	SSAA3	FM Antenna Cord	1		P1	SPPA16-1	Soft Cover	1	
A2	XBAS1A3301	Circuit Protection Fuse (3.3A)	2		P2	SPS5	Pad, AM Bar Antenna	1	
A3	RJPS	Pin Plug	4		P3	SPPI63	Polyethylene Bag	1	
A4	RJP16AS	AC Plug Not Belong for England	1		P4	SPS1	Pad, Left Side	1	
A5	RJP17AS	AC PLUG	1		P5	SPS3	Pad, Right Side	1	
					P6	SPG513	Carton Box	1	
					P7	SPG513	Printed Matter (only for Germany)	1	
					P8 (Germany)	SQF979	Printed Matter (only for Germany)	1	
					P8 (England)	SQF983	Printed Matter (only for England)	1	
					P9		Deletion		
					P11		Deletion		
PACKING PARTS									
P1	SPPA16-1	Soft Cover	1						
P2	SPS5	Pad, AM Bar Antenna	1						
P3	SPPI63	Polyethylene Bag	1						
P4	SPS1	Pad, Left Side	1						

SA-5250

CABINET & CHASSIS PARTS LOCATION

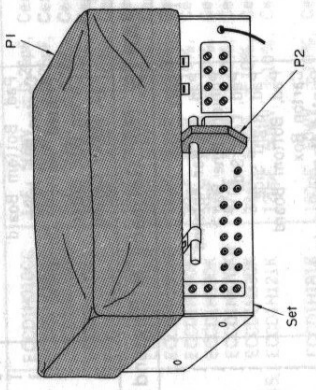


ACCESSORIES

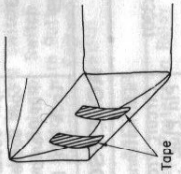
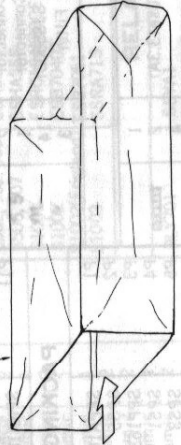
SA-5250

0353-A2

PACKING PARTS

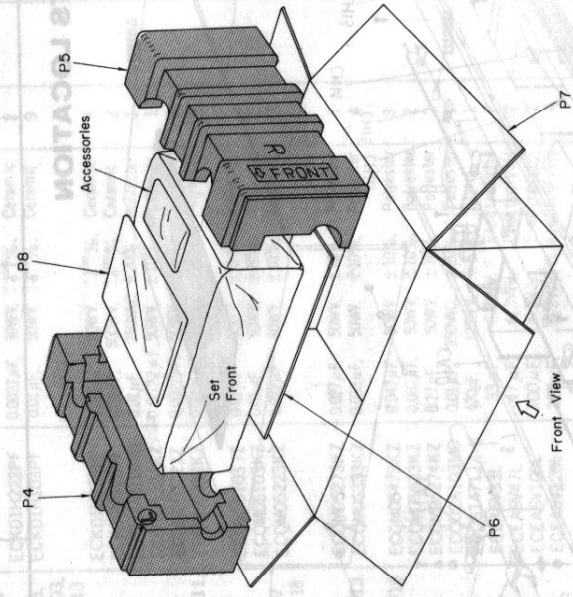


P3



SA-5250

SA-5550



P4

P8

Accessories

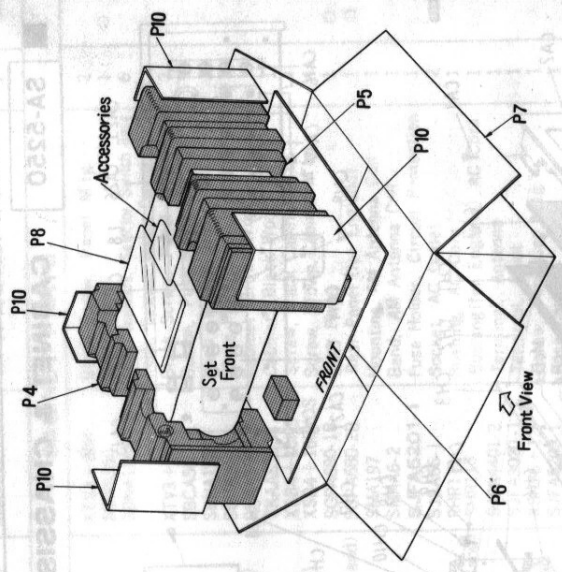
P5

Set Front

P6

P7

Front View



P4

P8

P10

Accessories

P5

Set Front

P6

P7

P9

P10

P11

Front View