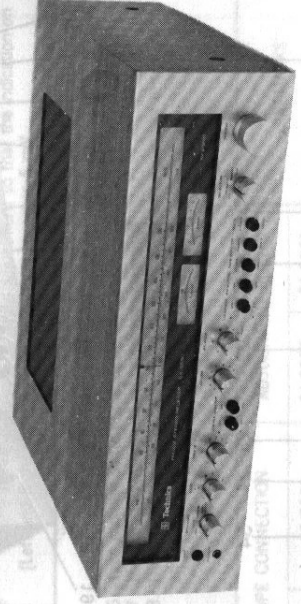



Technics
HI-FI COMPONENTS

Technics

Service Manual

FM/AM STEREO RECEIVER


MODEL SA-5250
MODEL SA-5550

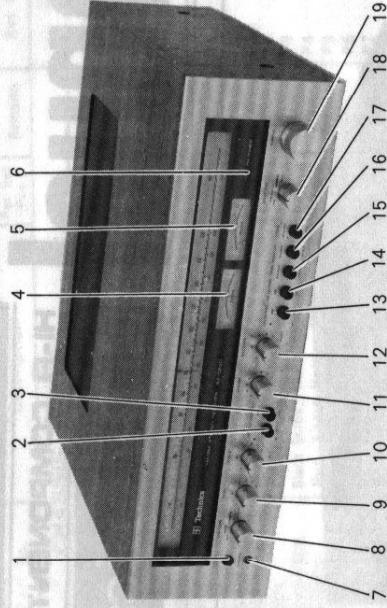
TECHNICAL SPECIFICATIONS (IHF)

	SA-5250	SA-5550
AMPLIFIER SECTION		
1 kHz continuous power	34W+34W (4Ω) 27W+27W (8Ω) 26W+26W (4Ω) 23W+23W (8Ω) 5 Hz~35 kHz, -3dB	80W+80W (4Ω) 62W+62W (8Ω) 72W+72W (4Ω) 58W+58W (8Ω) 5 Hz~45 kHz, -3dB
20 Hz~20 kHz continuous power	20 (8Ω), 10 (4Ω) 2mV/50kΩ 180mV/40kΩ 180mV/40kΩ	40 (8Ω), 20 (4Ω) 2mV/50kΩ 180mV/40kΩ 180mV/40kΩ
Power bandwidth (both channels driven 8Ω)	0.5% 0.7% 20 (8Ω), 10 (4Ω) 2mV/50kΩ 180mV/40kΩ 180mV/40kΩ	0.3% 0.4% 40 (8Ω), 20 (4Ω) 2mV/50kΩ 180mV/40kΩ 180mV/40kΩ
Total harmonic distortion	both channels driven	RIAA standard curve ±0.5 dB 5 Hz~90 kHz, ±1 dB
Intermodulation distortion	both channels driven	50 Hz~10 dB~-10 dB 10 kHz~+10 dB~-10 dB 50 Hz~+10 dB 150 Hz~-6 dB/oct 7 kHz~-6 dB/oct 180 mV 30 mV
Damping factor		
Input sensitivity and impedance	PHONO AUX TAPE 1.2 PLAYBACK TAPE 1 REC/PLAY input	
S/N (IHF, A)	PHONO AUX PHONO AUX BASS TREBLE	
Frequency response	RIAA standard curve ±0.5dB 6 Hz~60 kHz, ±3 dB 50 Hz~+10 dB~-10 dB 10 kHz~+10 dB~-10 dB 50 Hz~+10 dB	
Tone control		
Loudness control (volume at -30 dB)		
Low filter		
High filter		
Output voltage	TAPE 1, 2 (REC OUT) TAPE 1 REC/PLAY output	
FM TUNER SECTION		
Frequency range	88~108 MHz	88~108 MHz
Sensitivity	1.9 μV 0.4% 0.3%	1.8 μV 0.4% 0.2%
Total harmonic distortion	20 Hz~13 kHz, ±1 dB 70 dB 1.6 dB 50 dB 70 dB 65 dB 50 dB	20 Hz~15 kHz, ±1 dB 70 dB 1.6 dB 50 dB 70 dB 65 dB 50 dB
S/N		
Frequency response		
Alternate channel selectivity		
Capture ratio		
Image rejection at 98 MHz		
IF rejection at 98 MHz		
Spurious response rejection at 98 MHz		
AM suppression		
Stereo separation	1 kHz 10 kHz	
Leak carrier		
AM TUNER SECTION		
Frequency range	520~1610 kHz	520~1610 kHz
Sensitivity	30 μV, 250 μV/m 25 dB 40 dB	30 μV, 230 μV/m 25 dB 40 dB
Selectivity		
Image rejection at 1,000 kHz		
IF rejection at 1,000 kHz		
GENERAL		
Power consumption	270W	610W
Power supply	110/120/220/240V	110/120/220/240V
Dimensions (W×H×D)	16 1/2"×5 1/2"×13 1/2" (420×140×355) mm	18 1/2"×5 1/2"×15 1/2" (459×140×400) mm
Weight	18.3 lb. (8.3 kg)	26.2 lb. (12.8 kg)

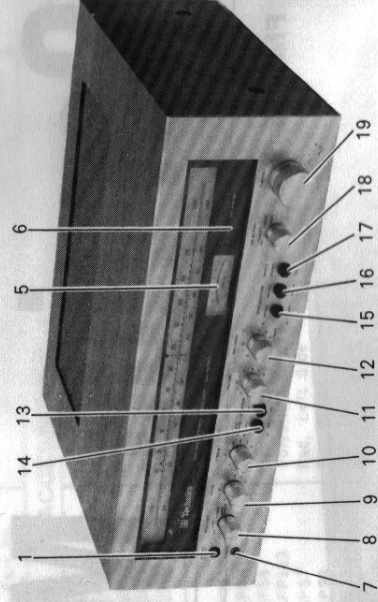
For accommodating future improvements, specifications are subject to change without notice.

Matsushita Electric
Matsushita Electric Trading Co., Ltd.
P. O. Box 288, Central Osaka, Japan

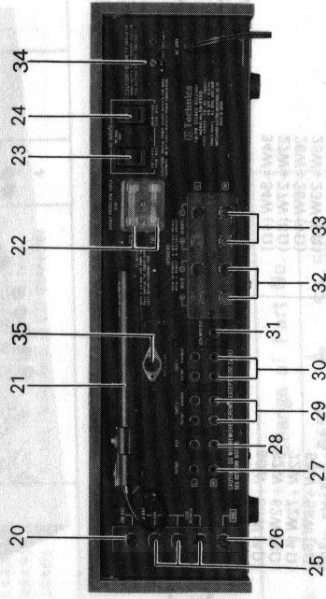
LOCATION OF CONTROLS



SA-5550

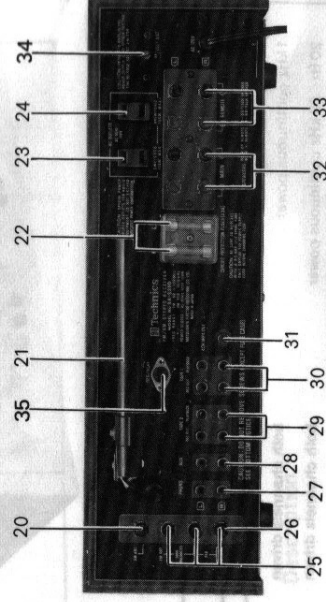


SA-5250



SA-5550

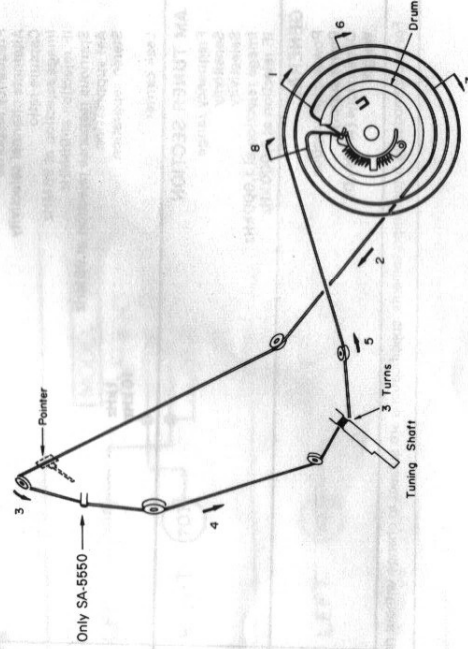
- 1. POWER SOURCE SWITCH
- 2. LOW FILTER SWITCH
- 3. HIGH FILTER SWITCH
- 4. FM TUNING METER
- 5. SIGNAL METER
- 6. STEREO INDICATOR (STEREO EYE)
- 7. HEADPHONES JACK
- 8. SPEAKERS SELECTOR SWITCH
- 9. BASS CONTROL
- 10. TREBLE CONTROL
- 11. VOLUME CONTROL
- 12. BALANCE CONTROL



SA-5250

- 13. LOUDNESS SWITCH
- 14. FM MUTING SWITCH
- 15. TAPE MONITOR (TAPE 1) SWITCH
- 16. TAPE MONITOR (TAPE 2) SWITCH
- 17. MODE SWITCH
- 18. SELECTOR SWITCH
- 19. TUNING CONTROL
- 20. AM ANTENNA TERMINAL
- 21. AM FERRITE CORE ANTENNA
- 22. CIRCUIT PROTECTION FUSES
- 23. AC OUTLET (Switched) | Not attach
- 24. AC OUTLET (Unswitched) | for England
- 25. FM ANTENNA TERMINALS
- 26. GROUND TERMINAL
- 27. PHONO INPUT TERMINALS
- 28. AUX INPUT TERMINALS
- 29. TAPE MONITOR (TAPE 2) TERMINALS
- 30. TAPE MONITOR (TAPE 1) TERMINALS
- 31. 4CH MPX OUTPUT TERMINAL
- 32. MAIN SPEAKER TERMINALS
- 33. REMOTE SPEAKER TERMINALS
- 34. VOLTAGE SELECTOR SWITCH
- 35. TAPE MONITOR 1 DIN SOCKET

DIAL CORD INSTALLATION GUIDE



1. Dial cord length is 90 $\frac{3}{8}$ " (230cm).
2. Tuning gang is positioned at maximum capacity. (Frequency is minimum)
3. Arrow marks (1~8) indicate correct order and direction of stringing dial cord.

ALIGNMENT INSTRUCTIONS.....READ CAREFULLY BEFORE ATTEMPTING ALIGNMENT

Note: The "IcQ" adjustment should be started 1~2 minutes after setting the power switch to the ON position.

CIRCUIT	DC VTVM CONNECTION	ADJUSTMENT POINTS	REMARKS
MAIN AMP ALIGNMENTOnly Model SA-5550			
1 DC UNBALANCE	Connect DC VTVM between point ① and point ② (Left and Right channels)	VR601 [Left and Right channel]	Make sure that DC VTVM becomes 0mV.
2 IcQ	Connect DC VTVM between point ③ [Positive side] and point ④ [Negative Side]. (Left and Right channels)	VR602 [Left and Right channel]	Make adjustments so that the indication on DC VTVM becomes 3 mV.
MAIN AMP ALIGNMENTOnly Model SA-5250			
3 IcQ	Connect DC VTVM between point ⑤ [Positive side] and point ⑥ [Negative side]. (Left and Right channels)	VR601 [Left and Right channel]	Make adjustment so that the indication on DC VTVM becomes 5 mV.

Notes:

1. Volume control Maximum Variable (FM-IF Alignment)
 2. Balance control Center
 3. Mode switch Stereo
 4. FM muting switch Off
 5. Selector switch AM (AM Alignment)
FM Auto (FM Alignment)
6. Tape monitor switch.....Source
 7. Maintain line voltage at rated voltage.
 8. Output of signal generator should be no higher than necessary to obtain an output reading.

SIGNAL GENERATOR or SWEEP GENERATOR CONNECTION	FREQUENCY	RECEIVER DIAL SETTING [DISTANCE]	VTVM or SCOPE CONNECTION		ADJUSTMENT POINTS		REMARKS
			SA-5550	SA-5250	SA-5550	SA-5250	

AM ALIGNMENT

High side through 0.001μF to TP5, Common to chassis.	455 kHz	Point of non-interference.	TP1	TP1	Coil T2 (1st IF) T3 (2nd IF)	Coil T1 (1st IF) T2 (2nd IF)	Adjust for maximum output.
	600 kHz (30% Mod. with 400Hz)	600 kHz [15.7mm (5/8")]	Speaker terminals of set.		Coil T1 (OSC) L10 (ANT)	Coil L9 (OSC) L8 (ANT)	Adjust for maximum output.
Fashion loop of several turns of wire and radiate signal into loop of receiver.	1500 kHz (30% Mod. with 400Hz)	1500 kHz [191.3mm (7 5/8")]	Speaker terminals of set.		Trimmer CT5 (OSC) CT4 (ANT)	Trimmer CT4 (OSC) CT3 (ANT)	Adjust for maximum output. Repeat steps (5) and (6).

FM-IF ALIGNMENT

/	Point of non-interference.	Speaker terminals of set			T101 (DISCRI) [Primary]	T102 (DISCRI) [Primary]	Adjust for maximum output noise.
	Point of non-interference.	Between TP4 and 101 terminal			T101 (DISCRI) [Secondary]	T101 (DISCRI) [Secondary]	SA-5550...Adjust for center of tuning meter indication. SA-5250...Make sure that DC VTVM becomes 0V.

FM-RF ALIGNMENT

Connect to FM antenna terminal through FM dummy antenna (300Ω).	90 MHz (100% Mod. with 400 Hz)	90 MHz [29.2mm (1 1/8")]	Speaker terminals of set.		L6 (FM OSC Coil), L4 (FM DET Coil) L2 (FM ANT Coil)		Adjust for maximum output.
	106 MHz (100% Mod. with 400 Hz)	106 MHz [186.2mm (7 3/8")]	Speaker terminals of set.		Trimmer CT3 (OSC) CT2 (DET) CT1 (ANT)	Trimmer CT5 (OSC) CT2 (DET) CT1 (ANT)	Adjust for maximum output.

• Use six cornered alignment tool for aligning FM OSC coil (L6).

FM-MONO DISTORTION ALIGNMENT

Connect to FM antenna terminal through FM dummy antenna (300Ω).	98 MHz (100% Mod. with 400 Hz)	98 MHz	Connect distortion meter to speaker terminals.		T101 (FM DISCRI) [Primary]	T102 [Primary]	Adjust for minimum distortion
	Point of non-interference.	Point of non-interference.	Connect DC VTVM to TP4 and 101 terminal.		T102 (FM DISCRI) [Secondary]	T101 [Secondary]	SA-5550...Adjust for center of tuning meter indication. SA-5250...Make sure that DC VTVM becomes 0V.

SIGNAL METER ALIGNMENT

Connect to FM antenna terminal through FM dummy antenna (300Ω).	98 MHz (30% Mod. with 400 Hz) [Output 22dB]	98 MHz	Signal meter of set.		T102	T104	Adjust for maximum indication.
	98 MHz (30% Mod. with 400Hz) [Output 72dB]	98 MHz	Signal meter of set.		T103	T103	Adjust for minimum indication.
					VR101	VR102	Adjust for about 4.7 point of signal meter indication.

SIGNAL GENERATOR		RECEIVER DIAL SETTING	VTVM or SCOPE CONNECTION	ADJUSTMENT POINTS		REMARKS
CONNECTION	FREQUENCY	SA-5550	SA-5250	SA-5550	SA-5250	

MUTING LEVEL ALIGNMENT

Note : FM muting switch to ON position.						
Connect to FM antenna terminal through FM dummy antenna (300Ω).	98 MHz (Input Level 16dB)	98 MHz (Output 28dB, 1HF)	Speaker terminals of set.	VR102	VR101	Adjust so that output can be obtained.

FM MPX PILOT ALIGNMENT

Note : When use the frequency counter						
Note : When not use the frequency counter						
<ol style="list-style-type: none"> 1 98 MHz Non-modulation mono signal applied to set. 2 Connect the frequency counter through 100 kΩ resistor to TP3, Common to chassis. 3 Adjust VR103 to 19 kHz ± 100 Hz. 						

Notes :						
Stereomodulator						
Connect stereomodulator output to EXT. MOD. terminal of signal generator.						
Inter OSC						
Pilot signal modulation 10%						
Signal generator						
Frequency approximately 98 MHz, Output level/72dB (1HF), Modulation mode to FM						
<ol style="list-style-type: none"> 1. Selector switch stereo 2. Balance control Center 3. Mode switch 4. Maintain line voltage at rated voltage. 						

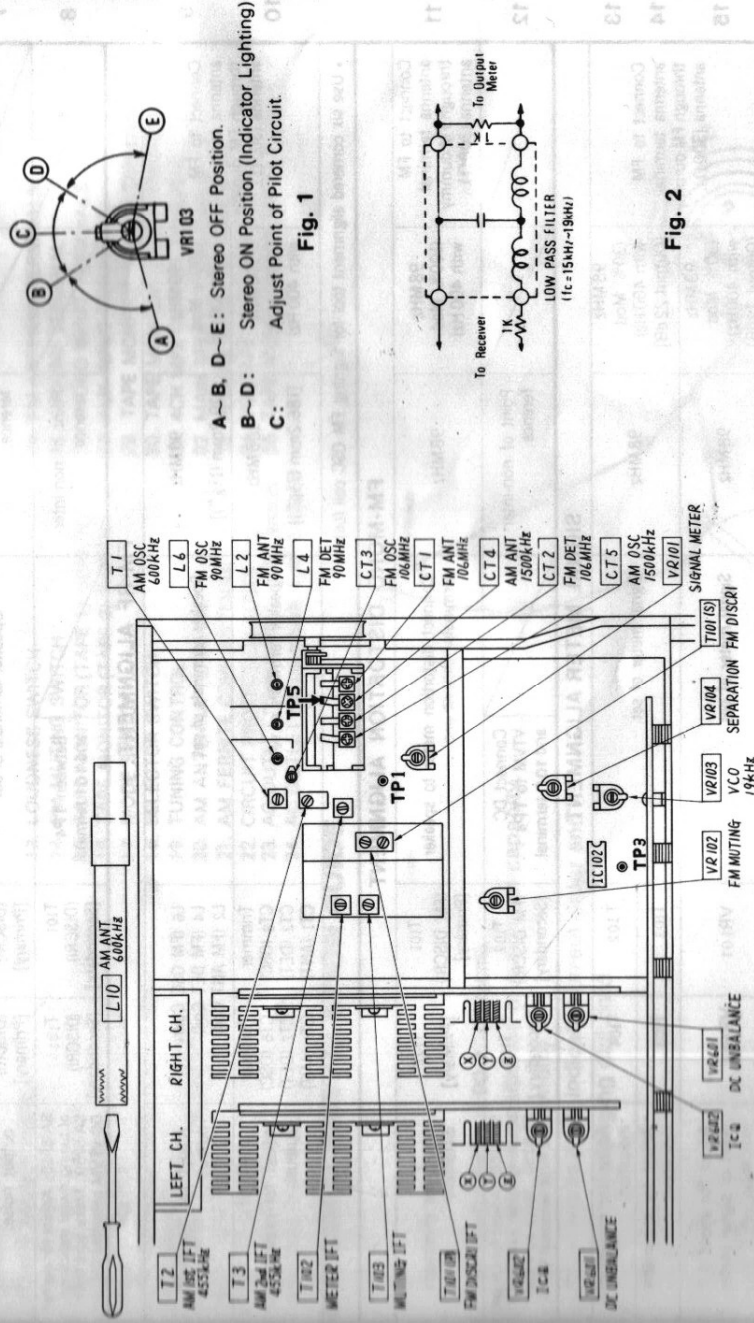
SIGNAL GENERATOR CONNECTION	STEREO MODULATOR MODE and MOD. RATE	INDICATOR TTI (VTVM or SCOPE)	ADJUSTMENT POINTS	REMARKS
-----------------------------	-------------------------------------	-------------------------------	-------------------	---------

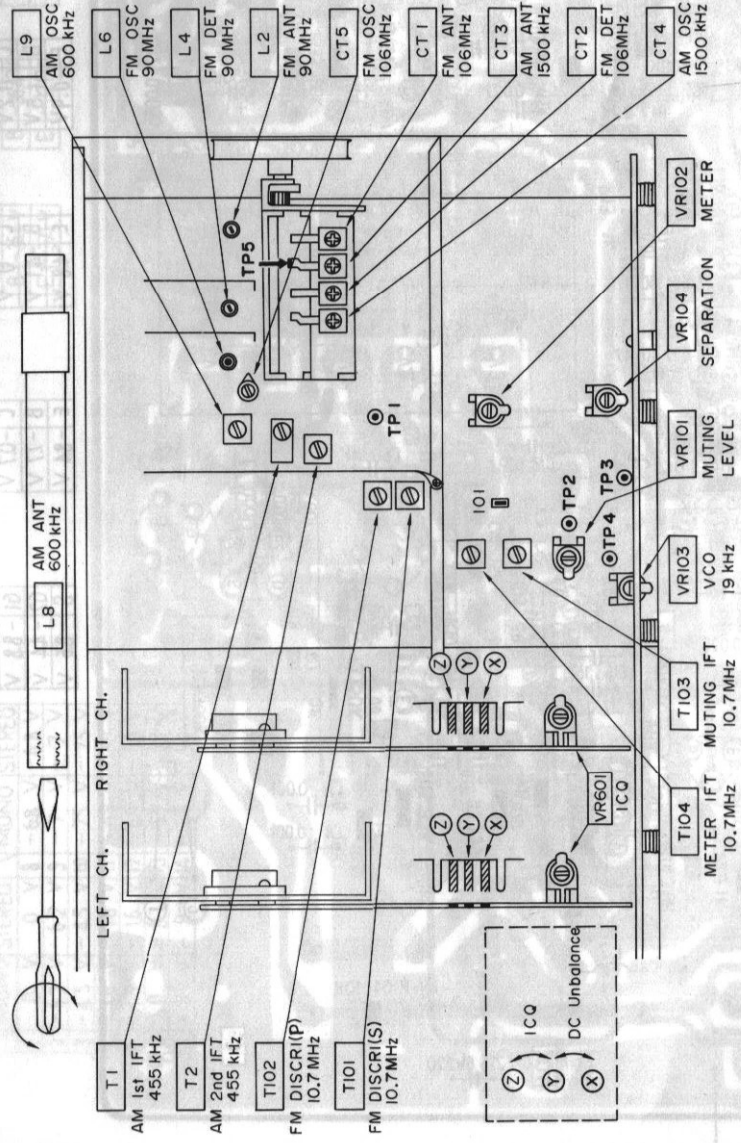
SEPARATION ALIGNMENT

Note : When use the frequency counter				
Note : When not use the frequency counter				
FM antenna terminal through dummy antenna.	L (and R) 30% Mod.		VR104	Adjust for minimum right (and left) output.

SA-5550

ALIGNMENT POINTS





SA-5550

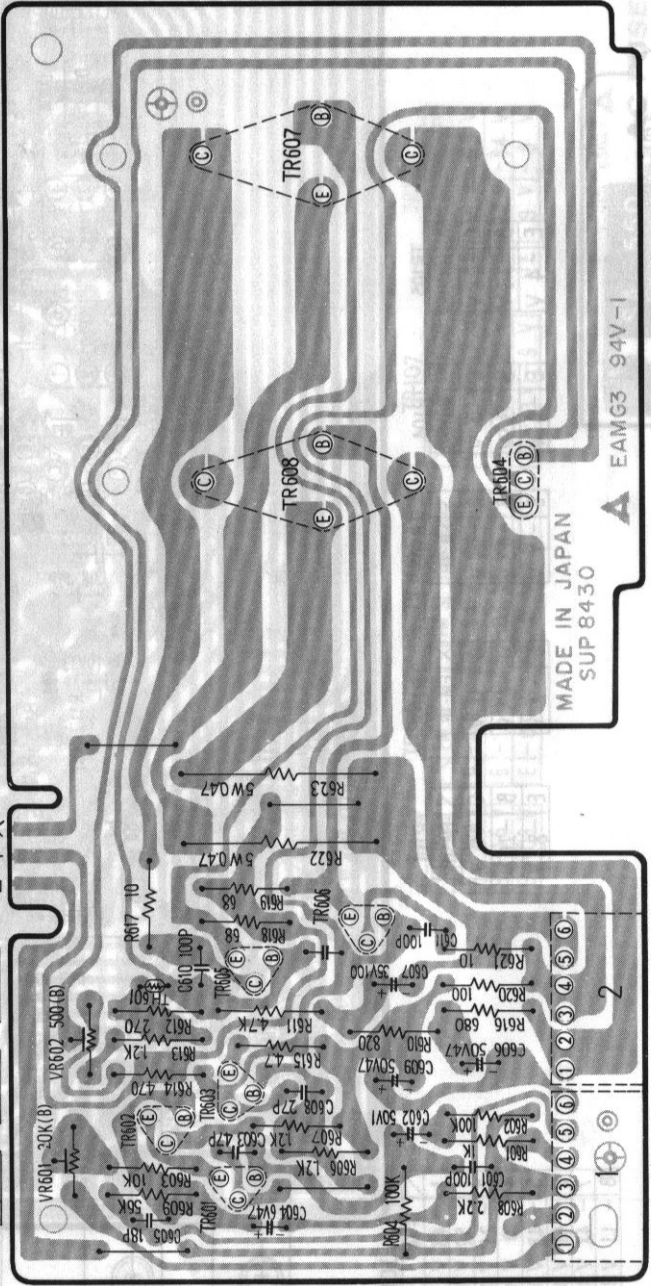
MAIN AMPLIFIER CIRCUIT BOARDLeft ch. or Right ch.

(Left channel is same as Right channel.)

TR601	AF	C -43.3V	B 0.2V	E 0.8V
TR602	AF	C -43.6V	B 0.2V	E 0.8V
TR603	PRE DRIVER	C -1.1V	B -43.8V	E -44.3V

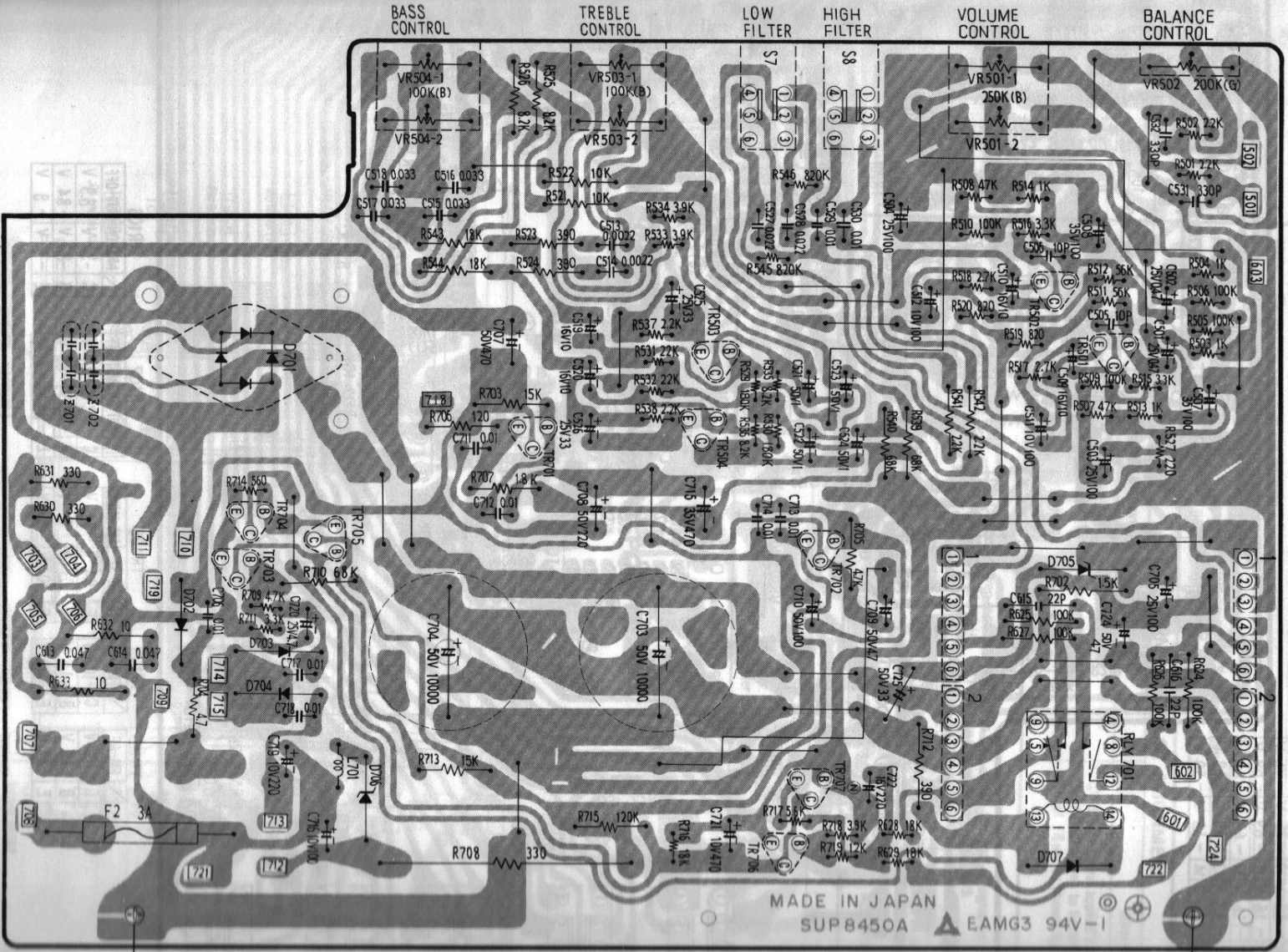
TR604	THERMAL COMP	C -0.5V	B 1.1V	E -1.1V
TR605	DRIVER	C 44.8V	B 1.1V	E 0.6V
TR606	DRIVER	C -44.8V	B -1.1V	E -0.6V

TR607	POWER	C 45.0V	B 0.6V	E 0.0V
TR608	POWER	C -45.0V	B -0.6V	E 0.0V



SA-5550

POWER SOURCE, SPEAKERS PROTECTION & TONE CONTROL CIRCUIT BOARD



MADE IN JAPAN
SUP8450A EAMG3 94V-1

TR-502	ELF AMP	C-18V	B-31V	E-85V
TR-503	TONE AMP	C-12V	B-31V	E-85V
TR-504	TONE AMP	C-12V	B-31V	E-85V
TR-505	TONE AMP	C-12V	B-31V	E-85V
TR-506	TONE AMP	C-12V	B-31V	E-85V
TR-507	TONE AMP	C-12V	B-31V	E-85V
TR-508	TONE AMP	C-12V	B-31V	E-85V
TR-509	TONE AMP	C-12V	B-31V	E-85V
TR-510	TONE AMP	C-12V	B-31V	E-85V
TR-511	TONE AMP	C-12V	B-31V	E-85V
TR-512	TONE AMP	C-12V	B-31V	E-85V
TR-513	TONE AMP	C-12V	B-31V	E-85V
TR-514	TONE AMP	C-12V	B-31V	E-85V
TR-515	TONE AMP	C-12V	B-31V	E-85V
TR-516	TONE AMP	C-12V	B-31V	E-85V
TR-517	TONE AMP	C-12V	B-31V	E-85V
TR-518	TONE AMP	C-12V	B-31V	E-85V
TR-519	TONE AMP	C-12V	B-31V	E-85V
TR-520	TONE AMP	C-12V	B-31V	E-85V
TR-521	TONE AMP	C-12V	B-31V	E-85V
TR-522	TONE AMP	C-12V	B-31V	E-85V
TR-523	TONE AMP	C-12V	B-31V	E-85V
TR-524	TONE AMP	C-12V	B-31V	E-85V
TR-525	TONE AMP	C-12V	B-31V	E-85V
TR-526	TONE AMP	C-12V	B-31V	E-85V
TR-527	TONE AMP	C-12V	B-31V	E-85V
TR-528	TONE AMP	C-12V	B-31V	E-85V
TR-529	TONE AMP	C-12V	B-31V	E-85V
TR-530	TONE AMP	C-12V	B-31V	E-85V

IC 102

FM MONO	FM STEREO	FM MONO	FM STEREO
1 0 V	0 V	8 -6.8 V	-6.8 V
2 -6.2 V	-6.2 V	9 -7 V	-7 V
3 -4.5 V	-4.5 V	10 -7.5 V	-7.5 V
4 -1.6 V	-1.6 V	11 -6.9 V	-6.9 V
5 -1.6 V	-1.6 V	12 -6.9 V	-6.9 V
6 0 V	-8.3 V	13 -6.9 V	-6.9 V
7 -9 V	-9 V	14 -5.9 V	-5.9 V

TR204

AF	
C -241V	
B -364V	
E -371V	

TR203

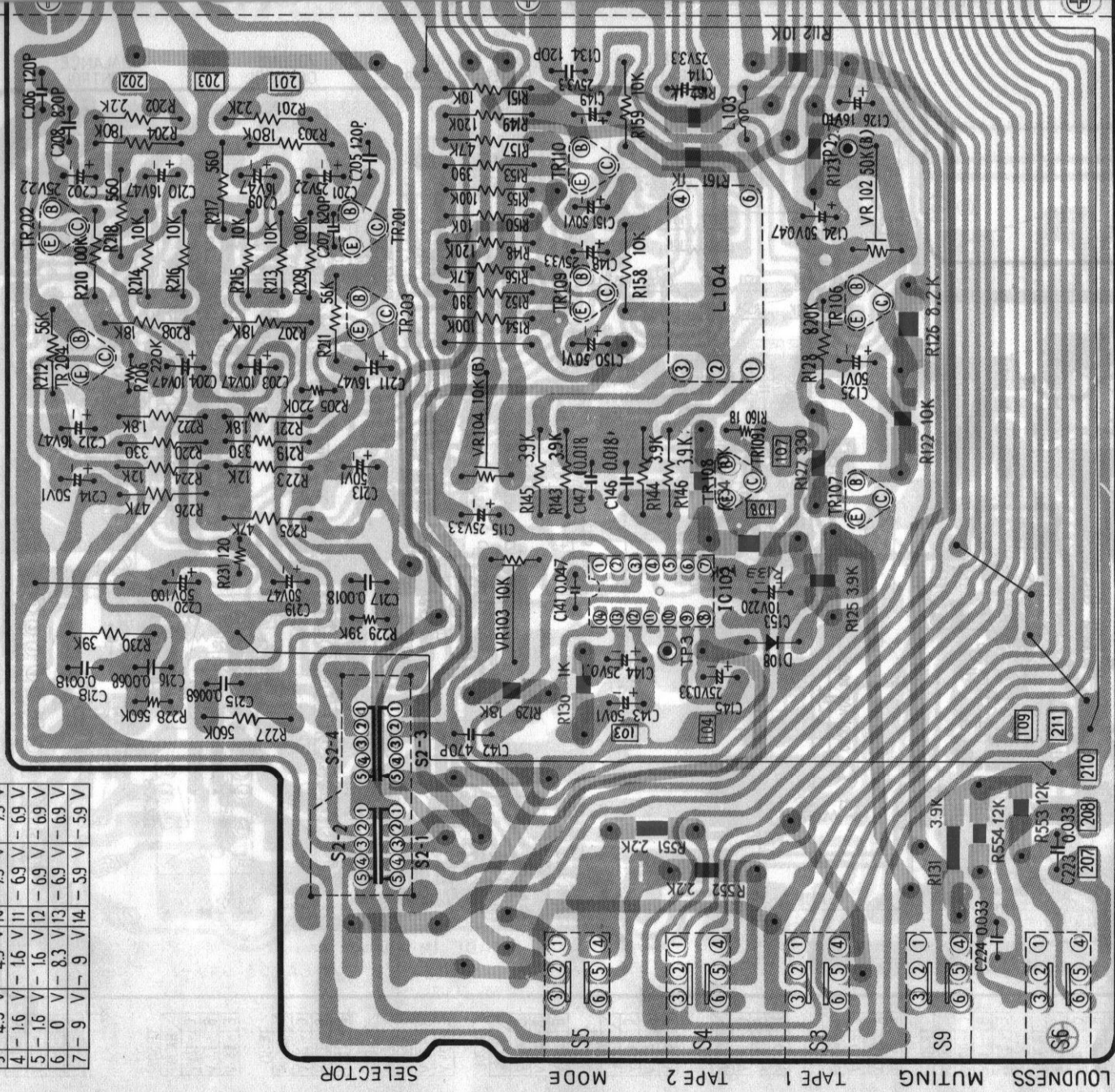
AF	
C -241V	
B -364V	
E -371V	

TR202

AF	
C -364V	
B -2.7V	
E -2.2V	

TR201

AF	
C -364V	
B -2.7V	
E -2.2V	



TR110	FM-AF	
C	-10.4V	
B	-1.5V	
E	-0.8V	

TR109	FM-AF	
C	-10.4V	
B	-1.5V	
E	-0.8V	

TR108	FM-ST	FM-MONO	
C	-0.4V	-8.1V	
B	-0.7V	0V	
E	0V	0V	

TR107	MUT-ON	MUT-OFF	
C	-8.3V	-1.7V	
B	-7.6V	-8.9V	
E	-8.3V	-9V	

TR106	MUT-ON	MUT-OFF	
C	-3.4V	-8.9V	
B	-8.7V	-8.4V	
E	-9V	-9V	

SA-5550

AC FUSE CIRCUIT

TR4

AM-AF
C -11.2V
B -1.5V
E -0.9V

TR3

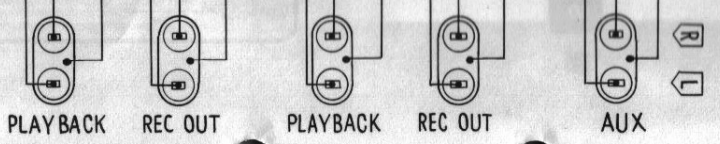
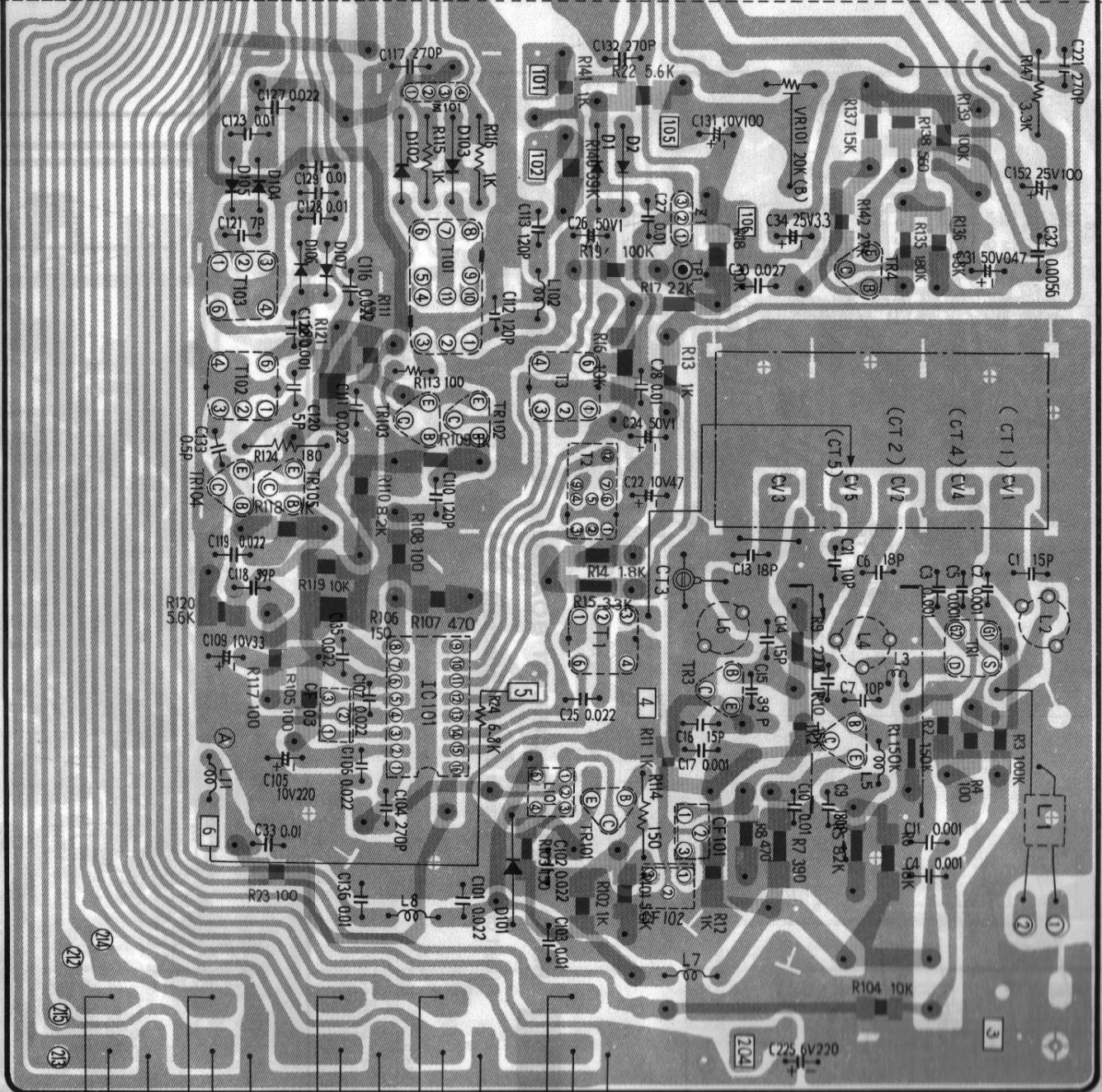
FM-OISC
C 0 V
B -4.1 V
E -4.8 V

TR2

FM-MIX
C -0.7 V
B -7.7 V
E -8.4 V

TR1

FM-RF
D 0 V
G1 -8.8 V
G2 -4.4 V
S -8.6 V



IC101

FM	AM
1 - 4.8 V	9 0 V
2 - 5.2 V	10 - 5.1 V
3 - 2.1 V	11 - 6.1 V
4 0 V	12 0 V
5 - 4.8 V	13 - 5.6 V
6 - 6.1 V	14 - 4.8 V
7 - 4.8 V	15 0 V
8 - 1.1 V	16 - 5.6 V

TR105

MUTING
C -0.8 V
B -3.3 V
E -4 V

TR104

MUTING
C 0 V
B -3.3 V
E -4 V

TR103

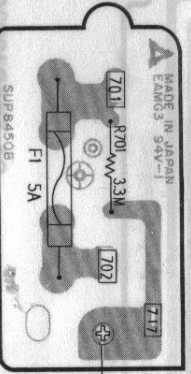
FM-TF
C -0.7 V
B -6.3 V
E -7 V

TR102

FM-TF
C 0 V
B -6.3 V
E -7 V

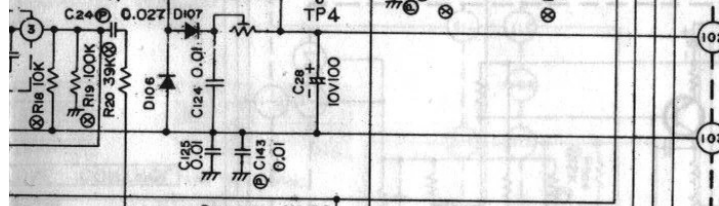
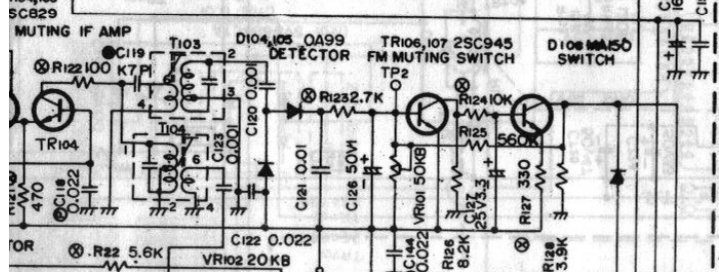
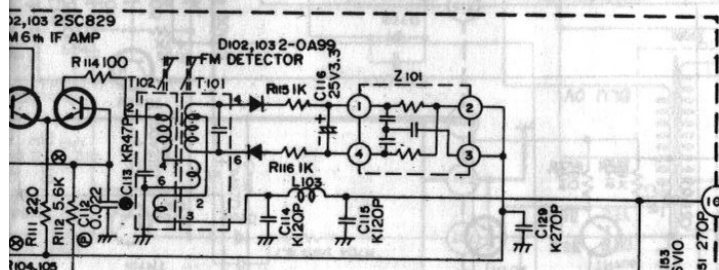
TR101

FM-TF
C 0 V
B -7.6 V
E -8.3 V



MADE IN JAPAN
EAM03 94V-1

TRI04	TRI05	TRI06	TRI07
C - 0.71	C 0	C - 8.54	C - 2.51 - 0.05
B - 3.47	B - 3.49	B - 7.94	B - 7.9 - 8.53
E - 4.20	E - 4.20	E - 8.58	E - 8.58 - 8.58



Schematic Diagram

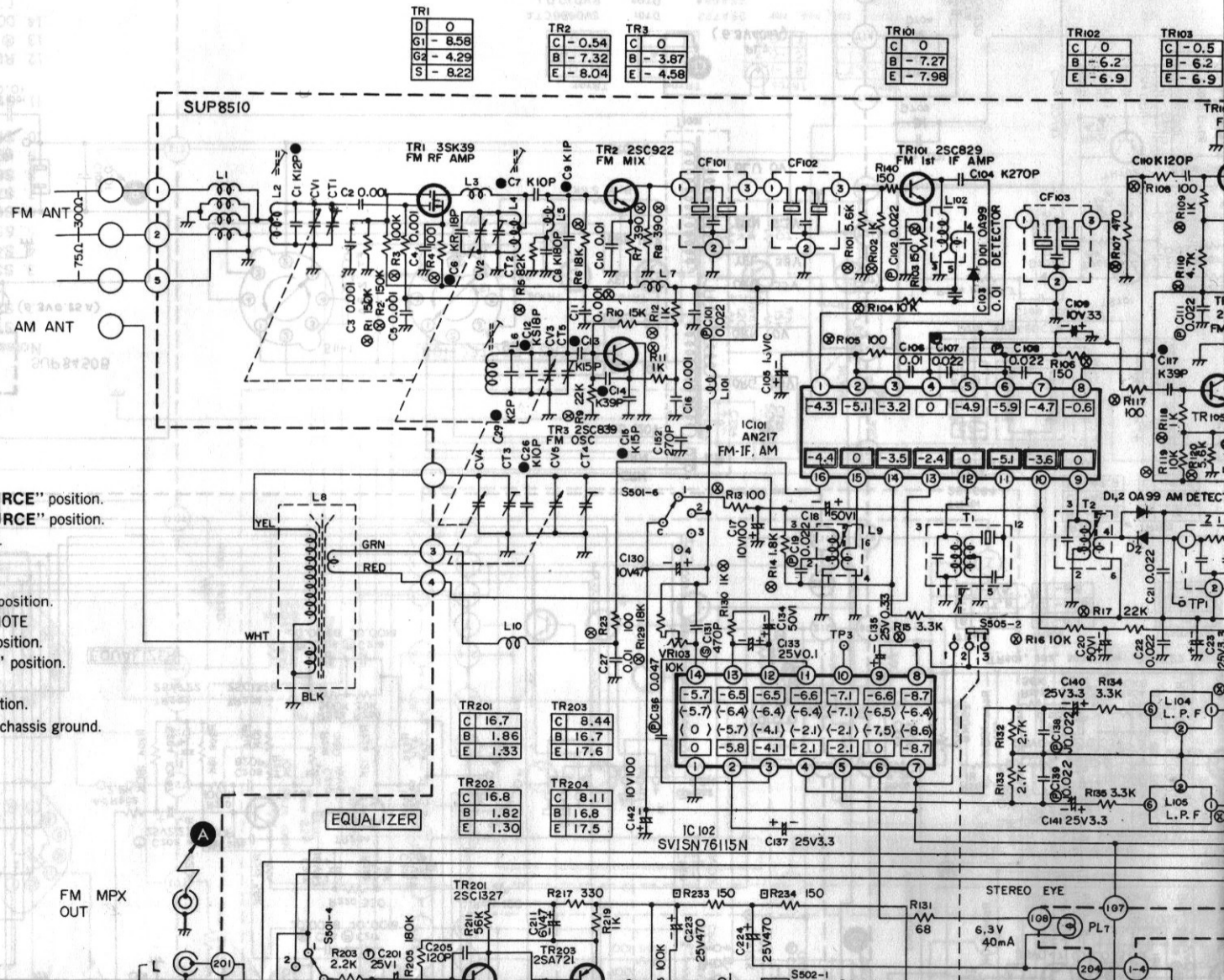
Model SA-5250

(This schematic diagram may be modified at any time)

Notes :

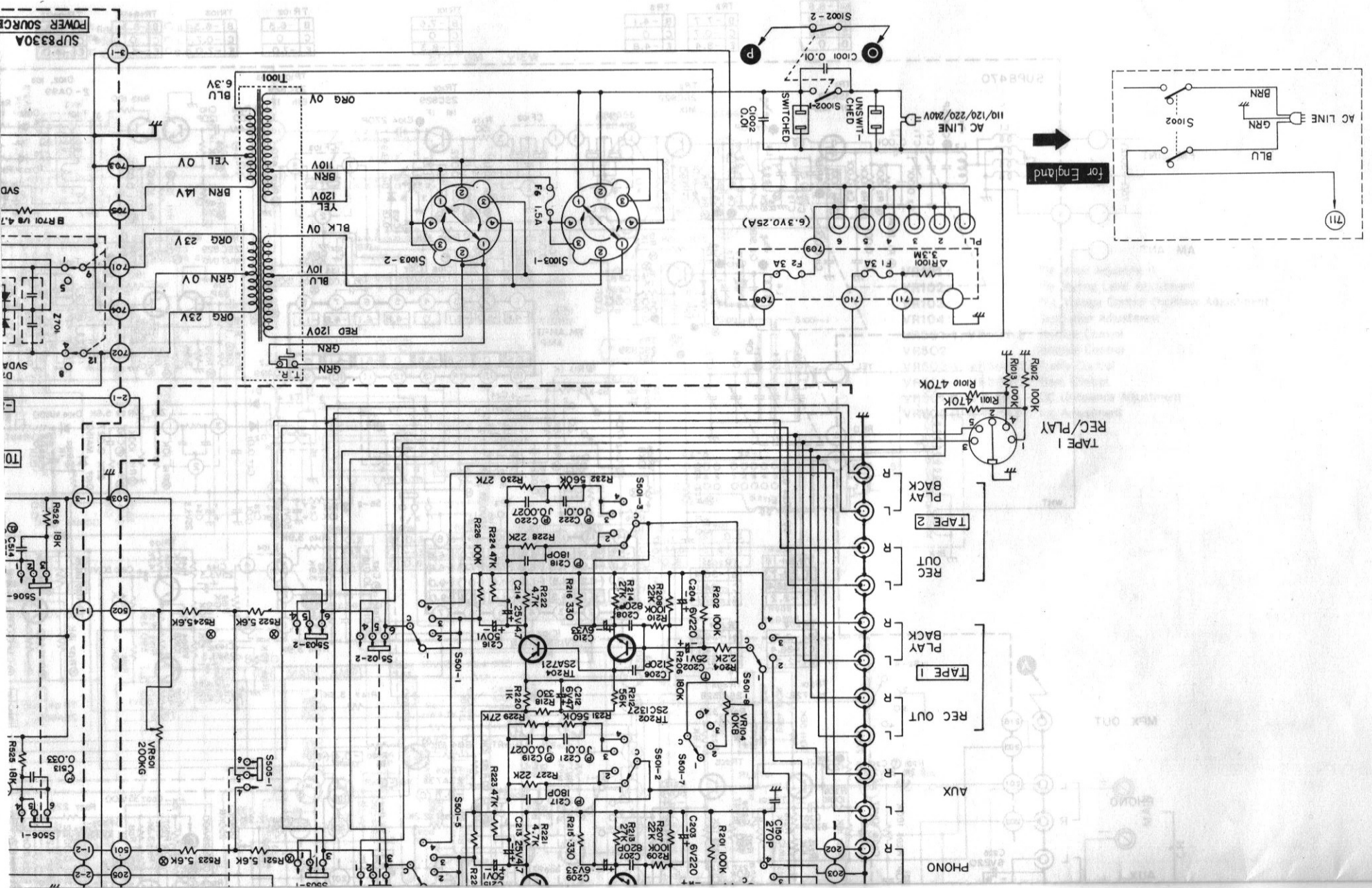
- S501-1~S501-8** : Selector switch in "AM" position.
AM ↔ FM AUTO ↔ PHONO ↔ AUX
- S502-1, S502-2** : Tape monitor (TAPE 1) switch in "SOURCE" position.
- S503-1, S503-2** : Tape monitor (TAPE 2) switch in "SOURCE" position.
- S505-1, S505-2** : Mode switch in "STEREO" position.
- S506-1, S506-2** : Loudness switch in "OFF" position.
- S507** : FM muting switch in "ON" position.
- S1001-1, S1001-2** : Speakers selector switch in "OFF" position.
OFF ↔ MAIN ↔ REMOTE ↔ MAIN + REMOTE
- S1002-1, S1002-2** : Power source switch in "OFF" position.
- S1003-1, S1003-2** : Voltage selector switch in "110V" position.
110V ↔ 120V ↔ 220V ↔ 240V
- RLY701** : Speakers protection relay in "NORMAL" position.
- DC voltage measurements are taken with DC VTVM from chassis ground.

- FM position
- AM position
- FM stereo signal reception



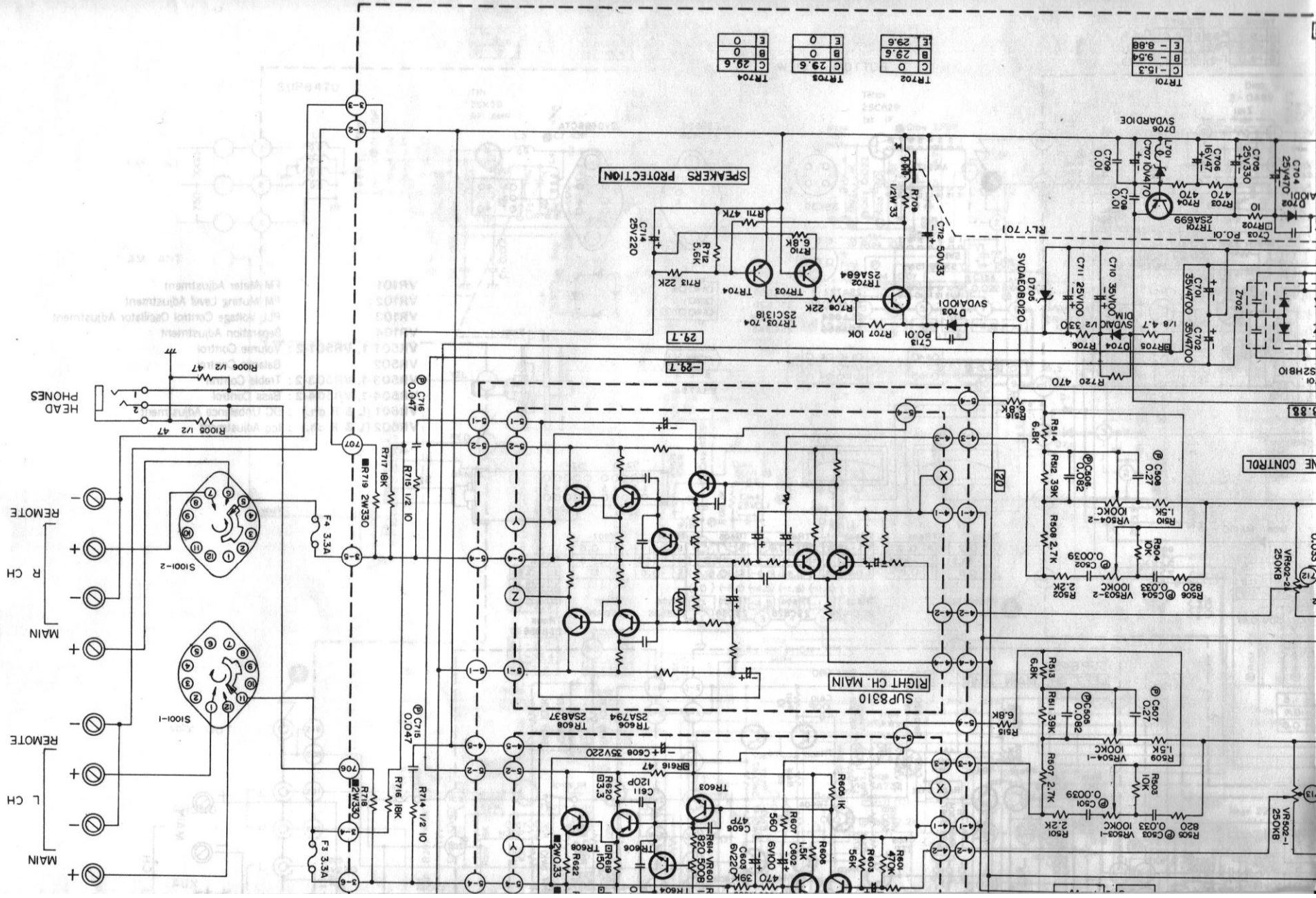
Model SA-550

Schematic Diagram

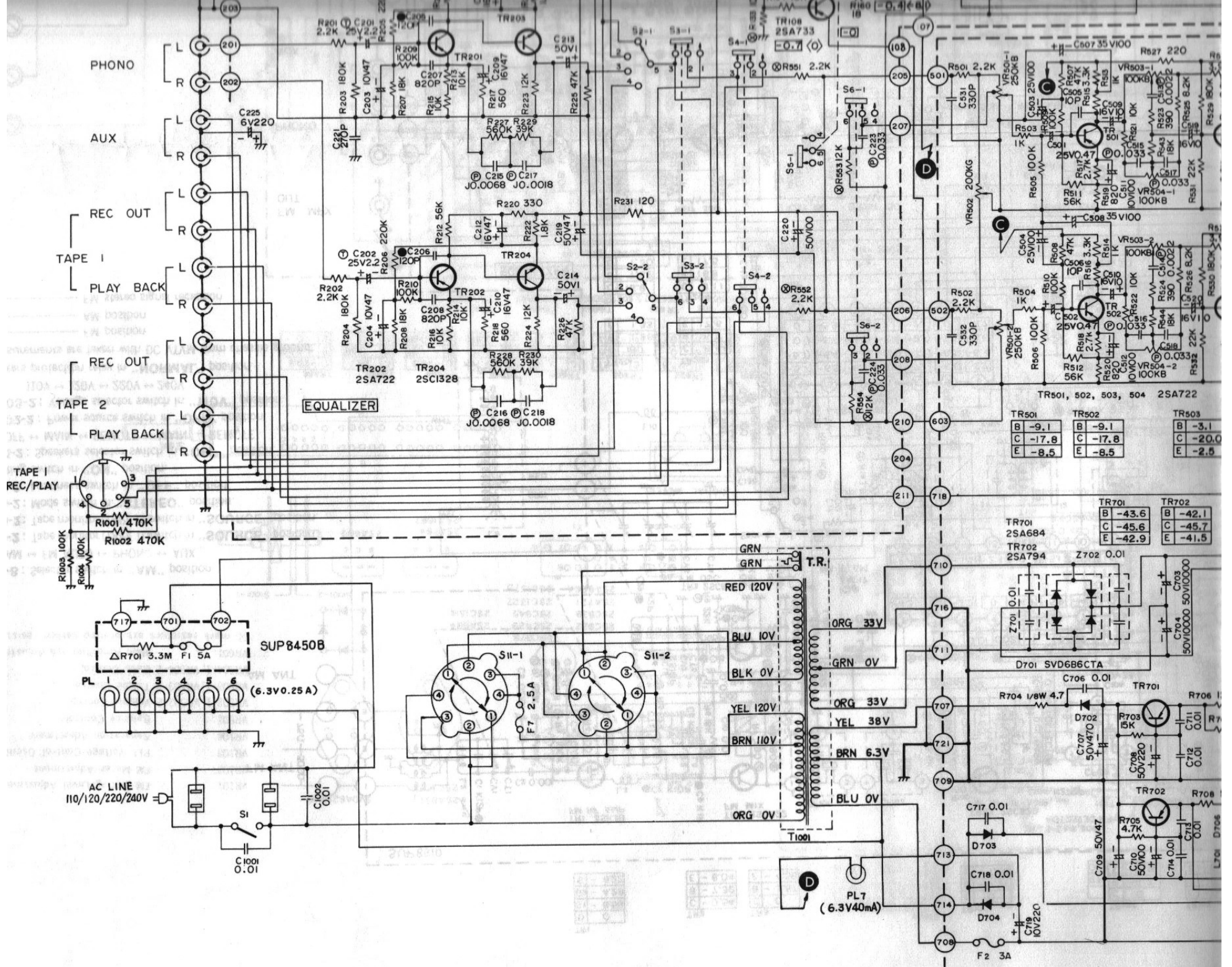


(This schematic diagram may be modified at any time)

FM	1	-48 V
	2	-52 V
	3	-21 V
	4	0 V
	5	-48 V
	6	-61 V
	7	-48 V
	8	-1.1 V



TR701	E	-8.88
	B	1-9.54
	C	15.3
	C	0
	E	29.6
TR702	E	29.6
	B	0
	C	29.6
TR703	E	0
	B	0
	C	29.6
TR704	E	0
	B	0
	C	29.6



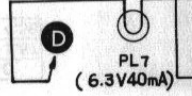
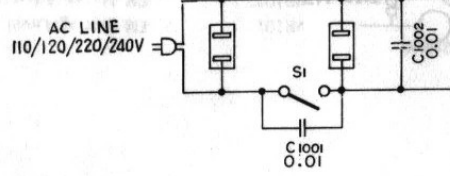
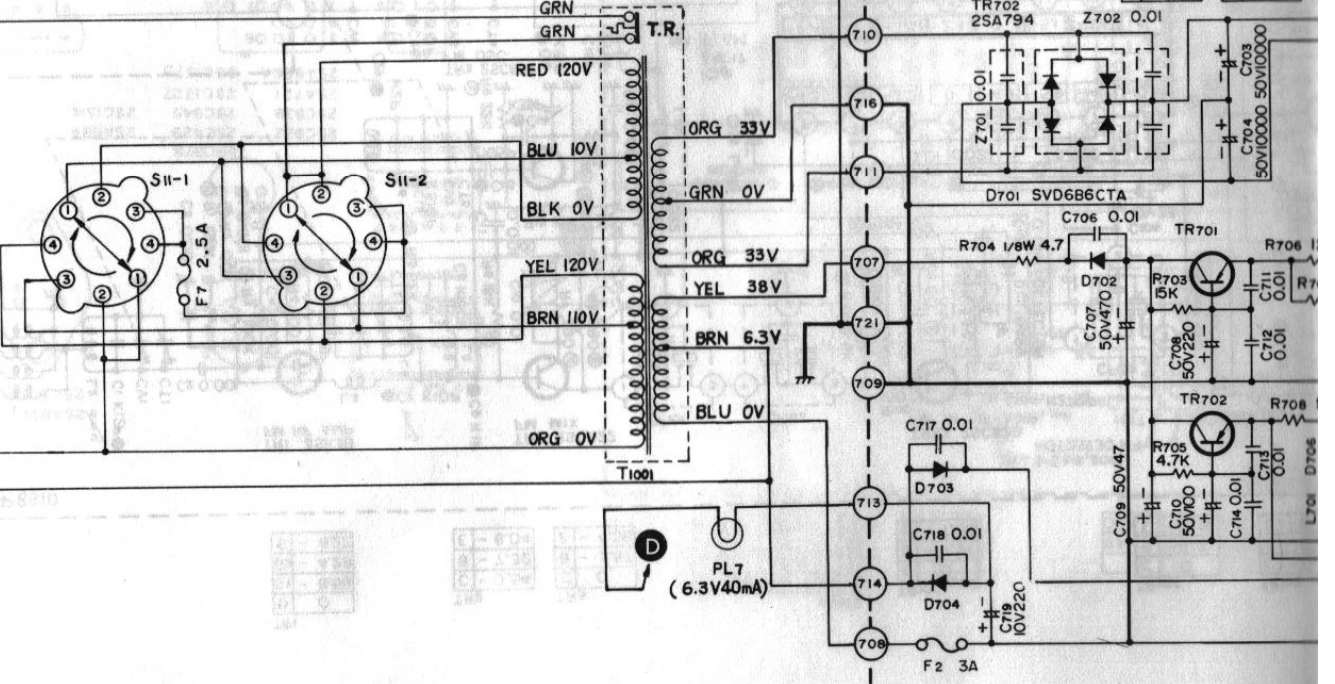
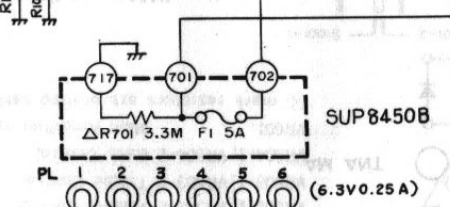
EQUALIZER

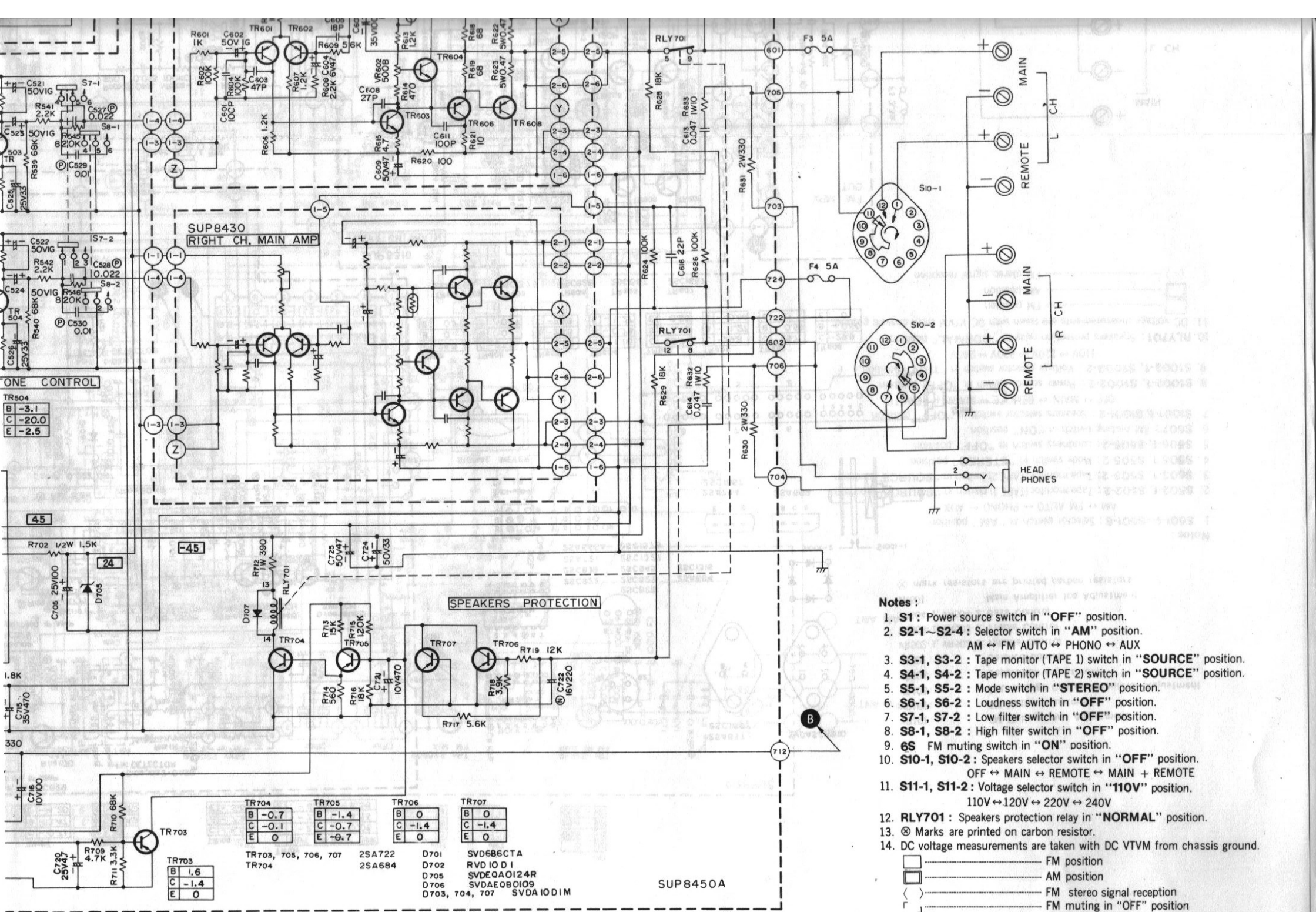
TR501, 502, 503, 504 2SA722

TR501	TR502	TR503
B -9.1	B -9.1	B -3.1
C -17.8	C -17.8	C -20.0
E -8.5	E -8.5	E -2.5

TR701	TR702
B -43.6	B -42.1
C -45.6	C -45.7
E -42.9	E -41.5

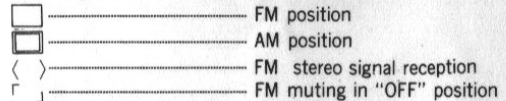
TR701 2SA684
TR702 2SA794





Notes :

1. **S1** : Power source switch in "OFF" position.
2. **S2-1~S2-4** : Selector switch in "AM" position.
AM ↔ FM AUTO ↔ PHONO ↔ AUX
3. **S3-1, S3-2** : Tape monitor (TAPE 1) switch in "SOURCE" position.
4. **S4-1, S4-2** : Tape monitor (TAPE 2) switch in "SOURCE" position.
5. **S5-1, S5-2** : Mode switch in "STEREO" position.
6. **S6-1, S6-2** : Loudness switch in "OFF" position.
7. **S7-1, S7-2** : Low filter switch in "OFF" position.
8. **S8-1, S8-2** : High filter switch in "OFF" position.
9. **6S** FM muting switch in "ON" position.
10. **S10-1, S10-2** : Speakers selector switch in "OFF" position.
OFF ↔ MAIN ↔ REMOTE ↔ MAIN + REMOTE
11. **S11-1, S11-2** : Voltage selector switch in "110V" position.
110V ↔ 120V ↔ 220V ↔ 240V
12. **RLY701** : Speakers protection relay in "NORMAL" position.
13. ⊗ Marks are printed on carbon resistor.
14. DC voltage measurements are taken with DC VTVM from chassis ground.

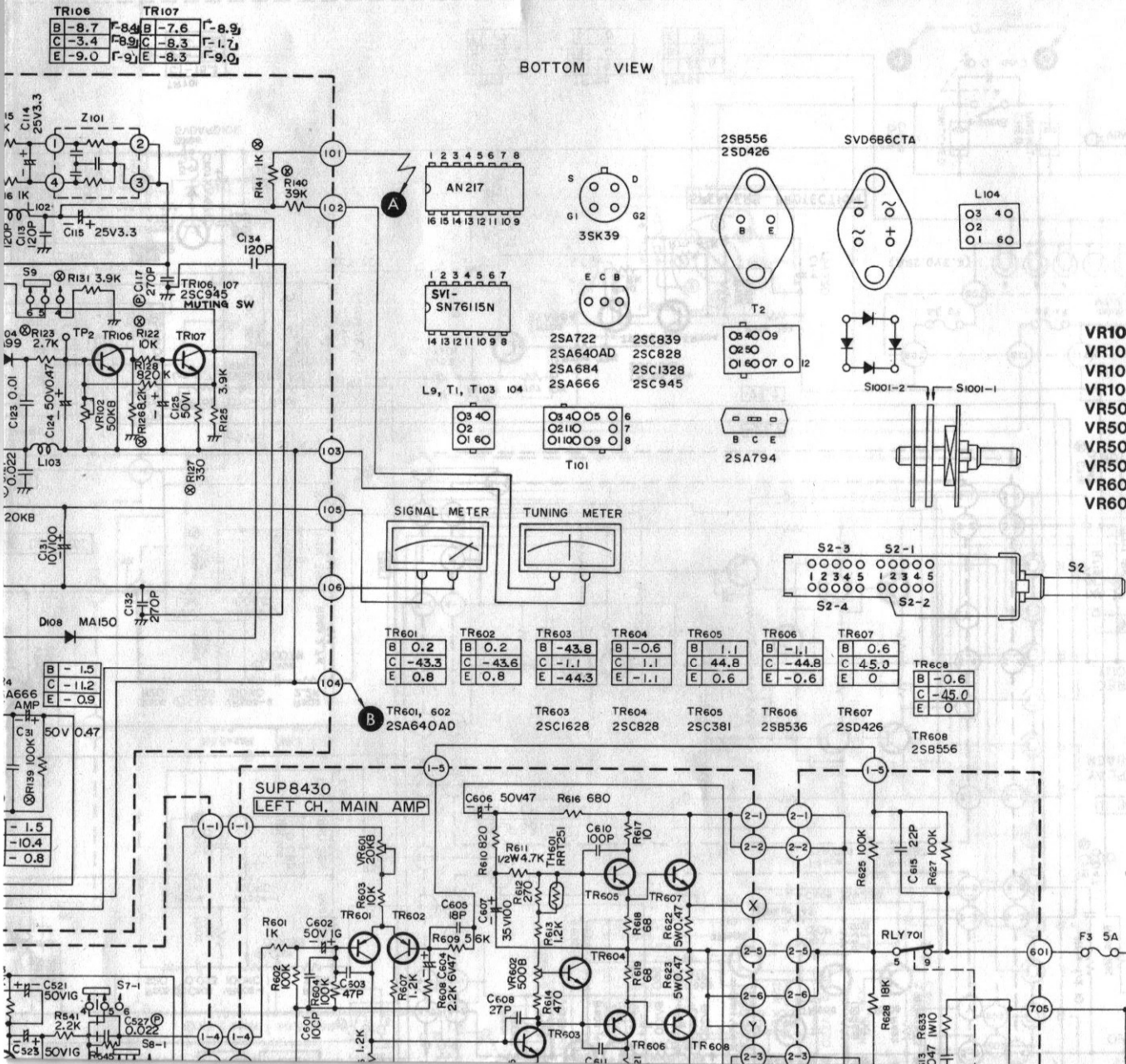


TR703	TR704	TR705	TR706	TR707
B -1.6	B -0.7	B -1.4	B 0	B 0
C -1.4	C -0.1	C -0.7	C -1.4	C -1.4
E 0	E 0	E -0.7	E 0	E 0

TR703, 705, 706, 707 2SA722 D701 SVD686CTA
 TR704 2SA684 D702 RVD10D1
 D705 SVDEQA0124R
 D706 SVDAE0BC109
 D703, 704, 707 SVDA10D1M

SUP8450A

with the development of new technology)



BOTTOM VIEW

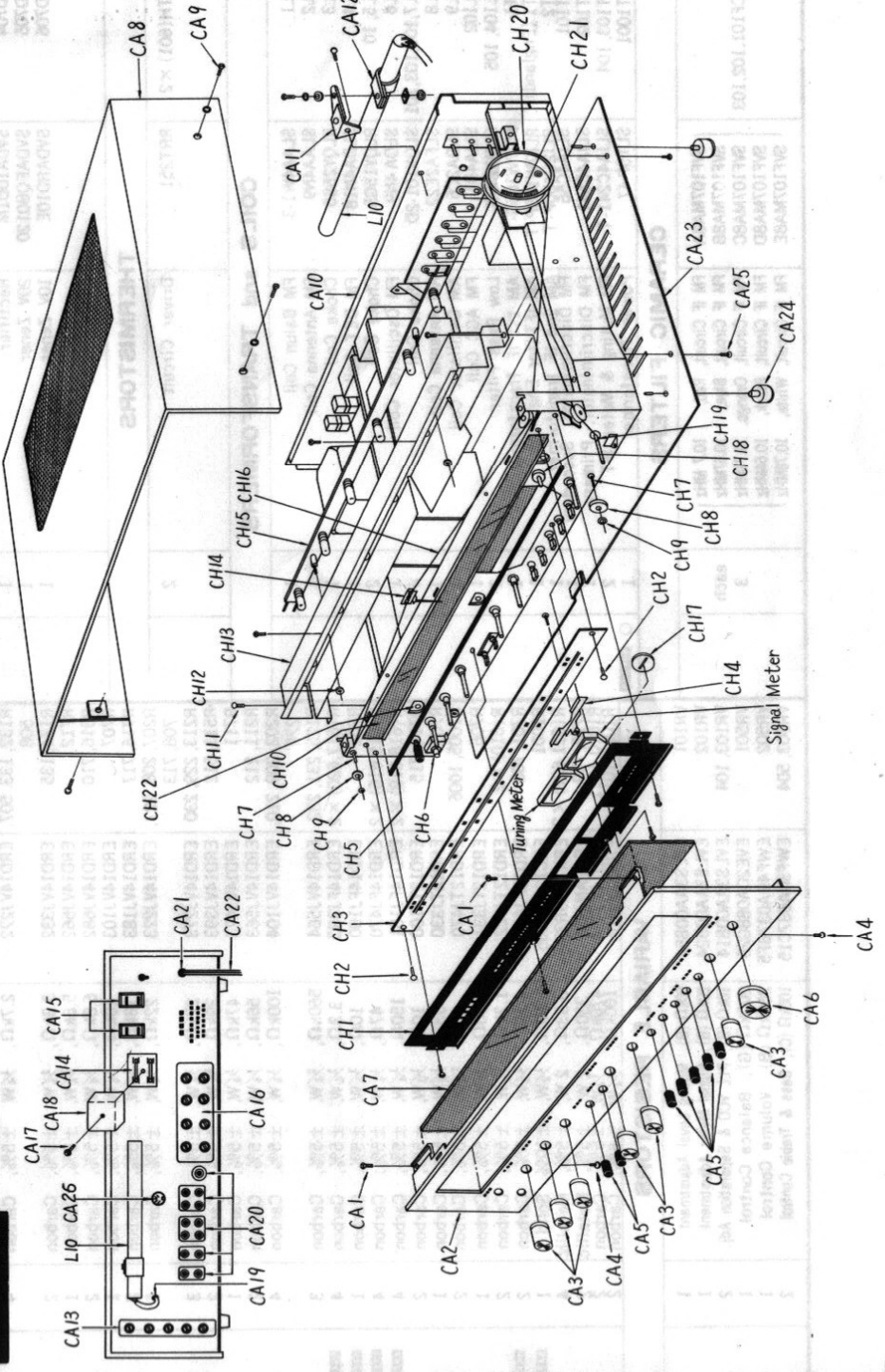
- VR101 :** FM Meter Adjustment
- VR102 :** FM Muting Level Adjustment
- VR103 :** PLL Voltage Control Oscillator Adjustment
- VR104 :** Separation Adjustment
- VR501-1, VR501-2 :** Volume Control
- VR502 :** Balance Control
- VR503-1, VR503-2 :** Treble Control
- VR504-1, VR504-2 :** Bass Control
- VR601 (L & R ch.) :** DC Unbalance Adjustment
- VR602 (L & R ch.) :** Icq Adjustment

MAIN
CH

Ref. No.	Part No.	Description	Per Set (Pcs.)	Remarks	Ref. No.	Part No.	Description	Per Set (Pcs.)	Remarks
CA8(BLK)	SKA7811	Cabinet (Black Wood)	1	○	CH19	SDTA10-2S	Tuning Shaft, with Flywheel	1	
CA9(BLK)	XS84+16FZS	Screw, Black Cabinet M'tg.	4		CH20	SDDA471S	Drum, Tuning	1	
CA9(BRN)	XS84+16BVCS	Screw, Brown Cabinet M'tg.	4		CH21	SDDA4121	Spring, Drum	1	
CA10	SGPA710-1A	Rear Panel	1	○	CH22	XXAR3H6S	Screw, Drum M'tg.	2	
CA11	SMA197	Mounting, AM Antenna Coil	1			SHRA919	Lock Pin, Dial Light Filter	3	
CA12	SMAA6-2	Band, AM Antenna Coil	1	○		SJSA65	Socket, Main Amp. p.c.b. Connector	4	
CA13	SJFA4501	Terminal, Ext. Antenna	1		ACCESSORIES				
CA14	SJFA5201-1	Holder, Circuit Protection Fuse	1		A1	SSAA3	FM Antenna Cord	1	
CA15	SJSA66-1	Socket, AC Outlet	2		A2	XBASA1A5001	Circuit Protection Fuse, 5A	2	
CA16	SJFA4803-1	Terminal, Speakers	1		A3	RJP5	Pin Plug	4	
CA17	XSN26+12	Screw, Fuse Cap M'tg.	1		A4	RJP16AS	AC Plug	4	
CA18	SJFA5202-1	Fuse Cap	1		A5	RJP17AS	AC Plug	1	
CA19	RHR106	Bushing, AM Antenna Lead Wire	1		PACKING PARTS				
CA20	SJFA3020-1	Terminal, Input & Tape Monitor	1		P1	SPPA14	Soft Cover	1	
CA21	RHR111	Bushing, AC Cord	1		P2	SPS5	Pad, AM Bar Antenna	1	
CA22	SJAA3-1	AC Cord	1		P3	SPP465	Polyethylene Bag	1	
(Holland)	RJP3A	AC Plug (Only for Holland)	1		P4	SPS7	Pad, Left Side	1	
CA23	SYU39	Bottom Board	1		P5	SPS9	Pad, Right Side	1	
CA24	SKL145	Leg	4		P6	SPS101	Pad, Bottom Side	1	
CA25	XTV3+8CR	Red Screw, Bottom Board M'tg.	8		P7	SPN5089	Carton Box, Inner	1	
CA26	XSN3+8RS	Red Screw, Bottom Board M'tg.	1		P8	SQF987	Printed Matter, Complete	1	
	RJS31-1	DIN Socket, Tape Monitor	1		P9	SPG519	Carton Box, Outer	1	
					P10	SPS103	Pad, Corner	4	
					P11	SPS105	Pad, Upper	1	
CHASSIS PARTS									
CH1	SDH113-1	Mounting, Meter & Dial Scale	1	○	PACKING PARTS (for Germany & Holland)				
CH2	SHRA916-1	Lock Pin, Dial Scale	2	○	P1	SPPA14	Soft Cover	1	
CH3	SKD2310	Dial Scale	1	○	P2	BPS5	Pad, AM Bar Antenna	1	
CH4	SMM10-1	Mounting, Meter	1	○	P3	SPP465	Polyethylene Bag	1	
CH5	SUW1	Mounting, Dial Scale	1	○	P4	SPS7	Pad, Left Side	1	
CH6	SJJA16	Jack, Headphones	1	○	P5	SPS9	Pad, Right Side	1	
CH7	RDY34	Pulley, Pulley	6		P6	SPS51	Pad, Bottom Side	1	
CH8	RDR20	Pulley, Dial Cord	5		P7	SPG521	Carton Box	1	
CH9	RNW150-2	Lock Washer, Pulley	5		P8(Germany)	SQF987	Printed Matter (only for Germany)	1	
CH10	SDU1	Filter, Dial Light	4	○	P9	Deletion	
CH11	XTV3+8CK	Black Screw, Lamp House M'tg.	4		P10	Deletion	
CH12	XNG3CS	Nut, Lamp Holder M'tg.	2	○	P11	Deletion	
CH13	SMP231	Lamp House	1						
CH14	SDPA8	Pointer, Dial	1						
CH15	SJSA206	Holder, Dial, Lamp	1						
CH16	SDZ051-1	Cord, Dial (230cm (90%"))	1	roll					
CH17	SLG51	Orange Filter, Stereo Indicator	1						
CH18	SHGA204	Bracket, Stereo, Eye	1						

SA-5550

CABINET & CHASSIS PARTS LOCATION



Ref. No.	Part No.	Description	Per Set (Pcs.)	Remarks
R505, 506, 509, 510	ERD14VJ104	100kΩ, 1/2W, ±5%, Carbon	4	
R529, 530	ERD14VJ184	180kΩ, 1/2W, ±5%, Carbon	2	
R5205, 206	ERD14VJ224	220kΩ, 1/2W, ±5%, Carbon	2	
R545, 546	ERD14VJ824	820kΩ, 1/2W, ±5%, Carbon	2	
R228	ERD14VJ564	560kΩ, 1/2W, ±5%, Carbon	1	
R 617, 621) × 2	ERD14FJ100	100Ω, 1/2W, ±5%, Carbon	4	
R 618, 619) × 2	ERD14FJ680	680Ω, 1/2W, ±5%, Carbon	2	
R 620) × 2	ERD14FJ101	100Ω, 1/2W, ±5%, Carbon	2	
R706	ERD14FJ121	120Ω, 1/2W, ±5%, Carbon	1	
R527	ERD14FJ221	220Ω, 1/2W, ±5%, Carbon	2	
R 616) × 2	ERD12TJ152	1.5kΩ, 1/2W, ±5%, Carbon	1	
R702	ERD12TJ472	4.7kΩ, 1/2W, ±5%, Carbon	1	
R712	ERGLANJ391	390Ω, 1W, ±5%, Metallic	1	
R704	ERD18FJ4R7	4.7Ω, 1/2W, ±5%, Carbon	1	
R701	ERC12ZGK335	3.3MΩ, 1/2W, ±10%, Solid	1	
R630, 631	ERGANJ331	330Ω, 2W, ±5%, Metallic	2	
R708	ERGSANJ331	330Ω, 5W, ±5%, Metallic	1	
R632, 633	ERXIANJ100	10Ω, 1W, ±5%, Metallic	2	
R 622, 623) × 2	ERF5AKR47	0.47Ω, 1W, ±10%, Non-Flammable Wire	4	
R24	ERD14TJ682	6.8kΩ, 1/2W, ±5%, Carbon	1	
R1001, 1002	ERD14TJ474	470kΩ, 1/2W, ±5%, Carbon	2	
R1003, 1004	ERD14TJ104	100kΩ, 1/2W, ±5%, Carbon	2	

VARIABLE RESISTORS

EVLS3AA00B24	20kΩ (B), Meter Adjustment	1
EVLS3AA00B54	50kΩ (B) Muting Level Adjustment	1
EVLS3AA00B14	10kΩ (B), VCO & Separation Adjustment	2
EWFA9A037BF5	250kΩ (B), Volume Control	1
EVEZDA088G25	200kΩ (G), Balance Control	1
EWFZQAF30B15	100kΩ (B), Bass & Treble Control	2
EVLS0AA00B24	20kΩ (B), DC Unbalance Adjustment	2
EVLS0AA00B52	500Ω (B), ICQ Adjustment	2

CAPACITORS

C133	0.5pF, 50WV, ±0.25pF, Ceramic	1
C8	1pF, 50WV, ±0.25pF, Ceramic	1
C129	5pF, 50WV, ±0.25pF, Ceramic	1
C121	7pF, 50WV, ±0.5pF, Ceramic	1
C7 21, 205, 206	10pF, 50WV, ±10%, Ceramic	4
C63, 636	22pF, 50WV, ±10%, Ceramic	2
C1 36	15pF, 50WV, ±10%, Ceramic	2
C14	15pF, 50WV, ±10%, Ceramic	1
C 605) × 2	18pF, 50WV, ±10%, Ceramic	2
C5	18pF, 50WV, ±10%, Ceramic	1
C13	18pF, 50WV, ±10%, Ceramic	1
C15, 118	39pF, 50WV, ±10%, Ceramic	2
C 603) × 2	47pF, 50WV, ±10%, Ceramic	2
C 601) × 2	100pF, 50WV, ±10%, Ceramic	2
C110, 112, 113, 134, 205, 206	120pF, 50WV, ±10%, Ceramic	6
C9	180pF, 50WV, ±10%, Ceramic	1
C104, 117, 119, 221	270pF, 50WV, ±10%, Ceramic	4
C 608) × 2	27pF, 500WV, ±10%, Ceramic	2
C 610) 611) × 2	100pF, 500WV, ±10%, Ceramic	4
C207, 208	820pF, 50WV, ±10%, Ceramic	2
C2, 3, 4, 5, 11, 17, 122	0.001μF, 50WV, ±0%, Ceramic	9
(612) × 2		
C531, 532	330pF, 50WV, ±10%, Ceramic	2
C10, 27, 28, 31, 103, 123, 128, 129, 711, 712, 713, 714, 717	0.01μF, 50WV, ±10%, Ceramic	14
718		
C706	0.01μF, 500WV, ±100%, Ceramic	1
C217, 218	0.001μF, 50WV, ±5%, Polyester	2
C513, 514	0.002μF, 50WV, ±10%, Polyester	2
C215, 216	0.002μF, 50WV, ±5%, Polyester	2
C32	0.005μF, 50WV, ±10%, Polyester	1
C529, 530	0.01μF, 50WV, ±10%, Polyester	2
C25, 101, 102, 106, 107, 108, 111, 116, 135, 119, 127, 527, 528, C146, 147	0.02μF, 50WV, ±10%, Polyester	13
C30	0.022μF, 50WV, ±10%, Polyester	1
C223, 224, 515, 516, 517, 518	0.047μF, 50WV, ±10%, Polyester	3
C141, 613, 614	0.01μF, 250VAC, ±20%, Styrol	2
C1001, 1002	470pF, 15WV, ±5%, Styrol	1
C142		

Ref. No.	Part No.	Description	Per Set (Pcs.)	Remarks
C(604) × 2	ECEA6V47L	47μF, 6.3WV, Electrolytic	2	
C225	ECEA6V220L	220μF, 6.3WV, Electrolytic	1	
C109, 720	ECEA10V33L	33μF, 10WV, Electrolytic	2	
C22, 203, 204	ECEA10V47L	47μF, 10WV, Electrolytic	3	
C131, 511, 512, 716	ECEA10V100L	100μF, 10WV, Electrolytic	4	
C105, 153, 719	ECEA10W220L	220μF, 10WV, Electrolytic	3	
C721	ECEA10V470L	470μF, 10WV, Electrolytic	1	
C126, 509	ECEA16V10L	10μF, 16WV, Electrolytic	5	
510, 519, 520	ECEA16V47L	47μF, 16WV, Electrolytic	4	
C209 ~ 212	ECEA16N220	220μF, 16WV, Non-Polar	1	
C722	ECEA25V3R3L	3.3μF, 25WV, Electrolytic	5	
C114, 115, 148, 149, 34	ECEA25V33L	33μF, 25WV, Electrolytic	2	
C525, 526	ECEA25V4R7L	4.7μF, 25WV, Electrolytic	1	
C720	ECEA25V100L	100μF, 25WV, Electrolytic	4	
C152, 503, 504, 705	ECEA35V100L	100μF, 35WV, Electrolytic	4	
C507, 508	ECEA35V470L	470μF, 35WV, Electrolytic	1	
(607) × 2	ECEA50V1G	1μF, 50WV, Electrolytic	14	
C715	ECEA50V33L	33μF, 50WV, Electrolytic	1	
C24, 26, 125	ECEA50V47L	47μF, 50WV, Electrolytic	5	
143, 150, 151, 213, 214, 521, 522, 523, 524, (602) × 2	ECEA50V47L	47μF, 50WV, Electrolytic	2	
C724	ECEA50V100L	100μF, 50WV, Electrolytic	2	
709, 725	ECEA50V220L	220μF, 50WV, Electrolytic	2	
C(609) × 2	ECEA50V470L	470μF, 50WV, Electrolytic	1	
C220, 710	ECEA50V220L	220μF, 50WV, Electrolytic	1	
C708	ECEA50V470L	470μF, 50WV, Electrolytic	1	
C177	ECEA50V470L	470μF, 50WV, Electrolytic	1	
C144	ECEA50V470L	470μF, 50WV, Electrolytic	1	
C145	ECEA50V470L	470μF, 50WV, Electrolytic	1	
C501, 502	ECEA50V470L	470μF, 50WV, Electrolytic	2	
EC5Z25EF2R2	ECEA50V470L	470μF, 50WV, Electrolytic	2	
C201, 202	ECEA50V470L	470μF, 50WV, Electrolytic	2	
C703, 704	ECEA50V470L	470μF, 50WV, Electrolytic	2	
C31, 124	ECEA50V470L	470μF, 50WV, Electrolytic	2	

VARIABLE CAPACITORS

CV1 ~ 5	ECV5MX25X20G	Tuning Gang, AM/FM (with Trimmer)	1
(CT1 ~ 4)			
CT3	ECV1ZW06P35	FM OSC Trimmer, 6pF	1

COMPONENT COMBINATIONS

Z1	EXAF203Z471	AM Detector	1
Z101	EXASDL04C	FM Detector	1
Z701, 702	RXAF103P22HD	Hum Cancel, 0.01μF (× 2), Ceramic	2

SWITCHES

S1	ESB7036	Power Source Switch	1
S2	SSR33	Selector Switch	1
S3, 4, 5, 6, 9	SSHA60S	Mode, Tape Monitor, Muting & Loudness Push Switches	1
S7, 8	SSHA56S	Low & High Filter Switch	1
S10	ESRC124F30CE	Speakers Switch	1
S11	SSRA7-1S	Voltage Selector Switch	1

RELAY and METERS

RLV701	SSVA1	Speakers Protection Relay	1
	SSMA25-2	Signal Meter	1
	SSMA26-2	FM Tuning Meter	1

FUSES and LIGHTS

F1	XBA2K50NS5	5A Fuse, Power Source	1
F2	XBAS1B30001	3A Fuse, Power Source	1
F3, 4	XBAS1A5001	5A Fuse, Circuit Protection	2
F7	XBA2K25NS5	2.5A Fuse, Power Source	1
PL1 ~ 6	XAM35K	Dial Lamp, 6.3V 0.25A	6
PL7	XAMR38S150A	Stereo Eye, 6.3V 40mA	1

CABINET PARTS

CA1	XTS3+8BK	Black Screw, Panel M'tg.	2
CA2	SGW6310	Front Panel	1
CA3	SBNA116E	Knob, Speakers, Bass, Treble, Volume, Balance & Selector	6
CA4	XTV3+8CK	Black Screw, Panel M'tg.	2
CA5	SBCA56	Button, Push Switches	7
CA6	SBNA131E	Knob, Tuning Control	1
CA7	SGU1	Glass Plate	1
CA8 (BRN)	SKA7810	Cabinet (Brown Wood)	1

NOTES: 1. Part numbers are indicated on most mechanical parts. Please use this part number for parts orders.
 2. **SAFETY** Indicates that only parts specified by the manufacturer be used for replacement in critical circuits.

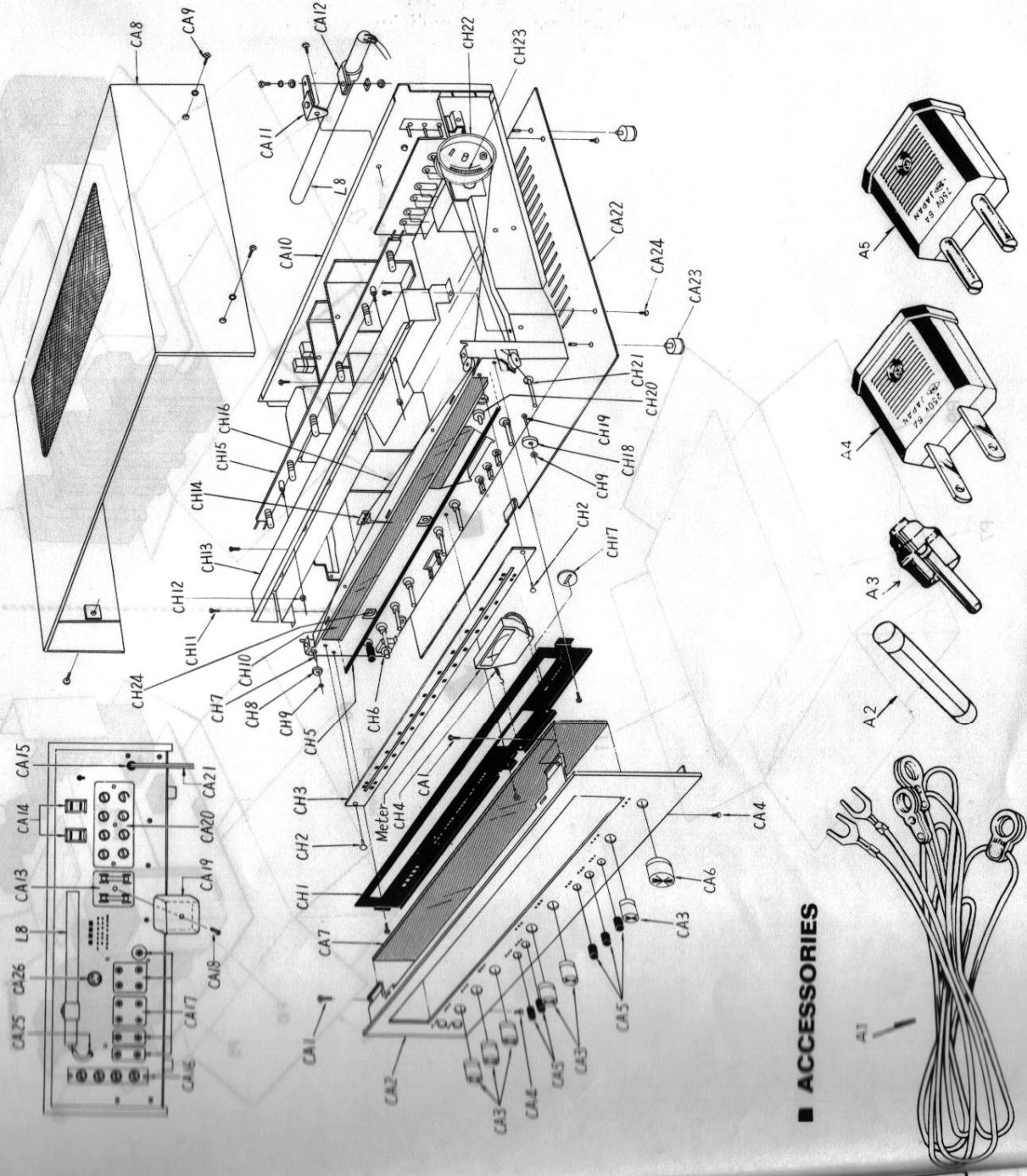
Ref. No.	Part No.	Description	Per Set (Pcs.)	Remarks	Ref. No.	Part No.	Description	Per Set (Pcs.)	Remarks
INTEGRATED CIRCUITS									
IC101	AN217BB	FM IF, AM RF & AM IF Amplifier	1		R131	ERD14TJ681	±5%, 3/4W	1	Carbon
IC102	SV1SN76115N	PLL Type FM MPX	1		R234	ERD14TJ151	±5%, 3/4W	1	Carbon
					R215, 216, 218	ERD14TJ331	±5%, 3/4W	3	Carbon
					R(608,612) × 2	ERD14TJ471	±5%, 3/4W	5	Carbon
					720				
					R(607) × 2	ERD14TJ561	±5%, 3/4W	2	Carbon
					R(614) × 2	ERD14TJ821	±5%, 3/4W	2	Carbon
					R219, 220	ERD14TJ102	±5%, 3/4W	4	Carbon
					(605) × 2				
					R(610) × 2	ERD14TJ122	±5%, 3/4W	2	Carbon
					R(606) × 2	ERD14TJ152	±5%, 3/4W	2	Carbon
					R(613) × 2	ERD14TJ182	±5%, 3/4W	2	Carbon
					R203(611) × 2	ERD14TJ222	±5%, 3/4W	3	Carbon
					R113	ERD14TJ392	±5%, 3/4W	2	Carbon
					R221, 222	ERD14TJ472	±5%, 3/4W	1	Carbon
					R513, 514, 515	ERD14TJ682	±5%, 3/4W	5	Carbon
					(602) × 2				
					R503, 504	ERD14TJ103	±5%, 3/4W	2	Carbon
					R525, 526	ERD14TJ183	±5%, 3/4W	2	Carbon
					R(604) × 2	ERD14TJ123	±5%, 3/4W	2	Carbon
					R228	ERD14TJ223	±5%, 3/4W	1	Carbon
					R214	ERD14TJ273	±5%, 3/4W	1	Carbon
					R(609) × 2	ERD14TJ393	±5%, 3/4W	1	Carbon
					R223, 224	ERD14TJ473	±5%, 3/4W	2	Carbon
					R(603) × 2	ERD14TJ563	±5%, 3/4W	2	Carbon
					R201, 225	ERD14TJ104	±5%, 3/4W	2	Carbon
					R205, 206	ERD14TJ184	±5%, 3/4W	2	Carbon
					R(601) × 2	ERD14TJ474	±5%, 3/4W	2	Carbon
					R114	ERD14VJ101	±5%, 3/4W	1	Carbon
					R140, 233	ERD14VJ151	±5%, 3/4W	1	Carbon
					R217	ERD14VJ331	±5%, 3/4W	1	Carbon
					R703, 704	ERD14VJ471	±5%, 3/4W	2	Carbon
					R505, 506	ERD14VJ821	±5%, 3/4W	2	Carbon
					R115, 116	ERD14VJ102	±5%, 3/4W	2	Carbon
					R509, 510	ERD14VJ152	±5%, 3/4W	2	Carbon
					R204, 501, 502	ERD14VJ222	±5%, 3/4W	2	Carbon
					R132, 133, 507, 508	ERD14VJ272	±5%, 3/4W	4	Carbon
					R134, 135	ERD14VJ332	±5%, 3/4W	2	Carbon
					R712	ERD14VJ562	±5%, 3/4W	1	Carbon
					R516, 710	ERD14VJ682	±5%, 3/4W	2	Carbon
					R707	ERD14VJ103	±5%, 3/4W	1	Carbon
					R716, 717	ERD14VJ183	±5%, 3/4W	2	Carbon
					R207, 208, 227, 708, 713	ERD14VJ223	±5%, 3/4W	5	Carbon
					R213, 229, 230	ERD14VJ273	±5%, 3/4W	3	Carbon
					R511, 512	ERD14VJ393	±5%, 3/4W	1	Carbon
					R711	ERD14VJ473	±5%, 3/4W	2	Carbon
					R211, 212	ERD14VJ563	±5%, 3/4W	2	Carbon
					R202, 209, 210, 226	ERD14VJ104	±5%, 3/4W	4	Carbon
					R125, 231, 232	ERD14VJ564	±5%, 3/4W	3	Carbon
					R(617,620) × 2	ERD14FJ383	±5%, 3/4W	4	Carbon
					R702	ERD14FJ100	±5%, 3/4W	1	Carbon
					R(615,616) × 2	ERD14FJ470	±5%, 3/4W	4	Carbon
					R(618,619) × 2	ERD14FJ151	±5%, 3/4W	4	Carbon
					R714, 715	ERD12TJ100	±5%, 3/4W	2	Carbon
					R709	ERD12TJ330	±5%, 3/4W	1	Carbon
					R1005, 1006	ERD12TJ470	±5%, 3/4W	2	Carbon
					R706	ERD12TJ331	±5%, 3/4W	1	Carbon
					R(610) × 2	ERD12TJ122	±5%, 3/4W	2	Carbon
					R701, 705	ERD18FJ477	±5%, 3/4W	2	Carbon
					R1001	ERC12ZGK335	±5%, 3/4W	2	Carbon
					R(621,622) × 2	ERX2ANJR33	±5%, 3/4W	4	Carbon
					R718, 719	ERG2ANJR33	±5%, 3/4W	4	Carbon
					R1010, 1011	ERD14TJ474	±5%, 3/4W	2	Carbon
					R1012, 1013	ERD14TJ104	±5%, 3/4W	2	Carbon
RESISTORS									
					VR101	EVL53AA00B54	50kΩ (B), Muting Level Adjustment	1	
					VR102	EVL53AA00B24	20kΩ (B), Signal Meter Adjustment	1	
					VR103, 104	EVL53AA00B14	10kΩ (B), PLL VCO & Separation Adj.	2	
					VR501	EVE2DA088G25	200kΩ (G), Balance Control	1	
					VR502	EWF49A037BF5	250kΩ (B), Volume Control	1	
					VR503, 504	EWF3NA037C15	100kΩ (C), Bass & Treble Control	2	
VARIABLE RESISTORS									
COILS and TRANSFORMERS									
L1	SLAA4W1-3	FM Balun Coil	1						
L2	SLAA4N9	FM Antenna Coil	1						
L3	RLQY25S5	Choke Coil	1						
L4	SLDA4N18	FM DET Coil	1						
L5, 10	RLQY15G5	Choke Coil	2						
L6	SLOA4N9	FM Oscillator Coil	1						
L7, 101, 103, 701	SLQX101-2D	Choke Coil	4						
L8	SLFA2E22	AM Antenna Coil	1						
L9	SLOA2C6	AM Oscillator Coil	1						
LI02	SLIA4B1	FM AGC Coil	1						
LI04, 105	SLM1Z7-K	Low Pass Filter	2						
T1	RLI7W105S-T	AM 1st IF Transformer	1						
T1 (England)	RLI7W108P-T	AM IFT (for England)	1						
T2	RLI2C450P-T	AM 2nd IF Transformer	1						
T101	SLIA4C56	FM Discriminator, Secondary	1						
T102	SLIA4C541	FM Discriminator, Primary	1						
T103, 104	SLIA4C241-T	FM Muting & Meter IFT	2						
T1001	SLT5P47	Power Transformer	1						
DIODES									
D1, 2, 101, 104, 105	OA99	AM & FM AGC Detector	5						
D102, 103	2-OA99	FM Discriminator	1 pair						
D106, 107, 108	MA150	FM Muting & Meter Detector	3						
D701	SVDAS2HB10	Rectifier	1						
D702	RVD1001	Rectifier	2						
D704	SVDA1001M	Rectifier	1						
D705	SVDAEQ80120	20V Zener	1						
D706	SVDARD10E	10V Zener	1						
THERMISTORS									
TH(601) × 2	RRT251	Driver Circuit	2						
CERAMIC FILTERS									
CF101, 102, 103	SVF107MA8A	FM IF Circuit, Red, 10.7 MHz	each						
	SVF107MA8B	FM IF Circuit, Blue, 10.67MHz							
	SVF107MA8C	FM IF Circuit, Orange, 10.73MHz	3						
	SVF107MA8D	FM IF Circuit, Black, 10.64MHz							
	SVF107MA8E	FM IF Circuit, White, 10.76MHz							

Ref. No.	Part No.	Description	Per Set (Pcs.)	Remarks	Ref. No.	Part No.	Description	Per Set (Pcs.)	Remarks
VR (601) × 2	EVL50AA00B52	500Ω (B), ICQ Adjustment	2		Z1	AM Detector			
					Z101	FM Detector			
					Z701, 702	Hum Cancel, 0.01μF(×2), 500WV			
CAPACITORS									
C9	ECCD1H010CC	1pF, 50WV, ±0.25pF, Ceramic	1						
C29	ECCD1H020CC	2pF, 50WV, ±0.25pF, Ceramic	1						
C119	ECCD1H070DC	10pF, 50WV, ±0.5pF, Ceramic	1						
C7, 26	ECCD1H100KC	10pF, 50WV, ±10%, Ceramic	2						
C1	ECCD1H120KC	12pF, 50WV, ±10%, Ceramic	1						
C13, 15	ECCD1H150KC	15pF, 50WV, ±10%, Ceramic	2						
C6	ECCD1H180KR	18pF, 50WV, ±10%, Ceramic	1						
C12	ECCD1H180KS	18pF, 50WV, ±10%, Ceramic	1						
C14, 117	ECCD1H390KC	39pF, 50WV, ±10%, Ceramic	2						
C(604) × 2	ECCD1H390K	39pF, 50WV, ±10%, Ceramic	2						
C113	ECCD1H470KR	47pF, 50WV, ±10%, Ceramic	1						
C(606) × 2	ECCD1H330K	33pF, 50WV, ±10%, Ceramic	2						
C110, 114, 115, 215, 206	ECCD1H121K	120pF, 50WV, ±10%, Ceramic	5						
C8, 217, 218	ECCD1H181K	180pF, 50WV, ±10%, Ceramic	3						
C104, 129, 150, 151, 152	ECCD1H271K	270pF, 50WV, ±10%, Ceramic	5						
C(609, 611) × 2	ECCD2H121K	120pF, 500WV, ±10%, Ceramic	4						
C207, 208	ECKD1H821KB	820pF, 50WV, ±10%, Ceramic	2						
C2, 3, 4, 5, 11, 16, 120, 123	ECKD1H102PF	0.001μF, 50WV, ±10%, Ceramic	8						
C(610) × 2	ECKD1H222PF	0.002μF, 50WV, ±10%, Ceramic	2						
C10, 103, 106, 121, 124, 703, 708, 709, 713	ECKD1H103PF	0.01μF, 50WV, ±10%, Ceramic	9						
C21, 22, 122	ECKD1H23PF	0.022μF, 50WV, ±10%, Ceramic	3						
C27, 125	ECKD2H103PF	0.01μF, 50WV, ±10%, Ceramic	2						
C1001	ECQJ2A103M	0.01μF, 250VAC, ±20%, Polyester	1						
C25	ECQW05222KZ	0.0022μF, 50WV, ±5%, Polyester	2						
C219, 220	ECQW05272JZ	0.0027μF, 50WV, ±5%, Polyester	2						
C501, 502, 511, 512	ECQW05392KZ	0.0039μF, 50WV, ±10%, Polyester	4						
C221, 222	ECQW05103JZ	0.01μF, 50WV, ±5%, Polyester	2						
C143	ECQW05103KZ	0.01μF, 50WV, ±10%, Polyester	1						
C19,101,102,107,108,111,112,118,144,138,139	ECQW05223KZ	0.022μF, 50WV, ±10%, Polyester	11						
C24	ECQW05273KZ	0.027μF, 50WV, ±10%, Polyester	1						
C503, 504, 513, 514	ECQW05333KZ	0.033μF, 50WV, ±10%, Polyester	4						
C136, 715, 716	ECQW05473KZ	0.047μF, 50WV, ±10%, Polyester	3						
C505, 506	ECQW05823KZ	0.082μF, 50WV, ±10%, Polyester	2						
C507, 508	ECQW05274KZ	0.027μF, 50WV, ±10%, Polyester	2						
C1002	ECQJ2A103M	0.01μF, 250VAC, ±20%, Polyester	1						
C131	ECQS1471JZ-K	470pF, 125WV, ±5%, Styrol	1						
C209, 210	ECEAGV33L	33μF, 6.3WV, Electrolytic	2						
C211, 212	ECEAGV47L	47μF, 6.3WV, Electrolytic	2						
C(602) × 2	ECEAGV100L	100μF, 6.3WV, Electrolytic	2						
C203, 204, (603) × 2	ECEAGV220L	220μF, 6.3WV, Electrolytic	4						
C109	ECEA10V33L	33μF, 10WV, Electrolytic	1						
C130	ECEA10V47L	47μF, 10WV, Electrolytic	1						
C17, 28, 142	ECEA10V100L	100μF, 10WV, Electrolytic	3						
C707	ECEA10V470L	470μF, 10WV, Electrolytic	1						
C105, 153, 250	ECEA16V10L	10μF, 16WV, Electrolytic	3						
C706	ECEA16V47L	47μF, 16WV, Electrolytic	1						
C23, 116, 127, 137, 140, 141	ECEA25V3R3L	3.3μF, 25WV, Electrolytic	6						
C213, 214	ECEA25V4R7L	4.7μF, 25WV, Electrolytic	2						
C711	ECEA25V100L	100μF, 25WV, Electrolytic	1						
C705, 714, (605) × 2	ECEA25V220L	220μF, 25WV, Electrolytic	4						
C223, 224, 704	ECEA25V470L	470μF, 25WV, Electrolytic	3						
C(607) × 2	ECEA35V47L	47μF, 35WV, Electrolytic	2						
C710	ECEA35V100L	100μF, 35WV, Electrolytic	1						
C(608) × 2	ECEA35V220L	220μF, 35WV, Electrolytic	2						
C18, 20, 126, 134, 215, 216, (601) × 2	ECEA50V1G	1μF, 50WV, Electrolytic	8						
C712	ECEA50V33L	33μF, 50WV, Electrolytic	1						
C133	ECAG25ER1X	0.1μF, 25WV, Electrolytic	1						
C135	ECAG25ER33X	0.33μF, 25WV, Electrolytic	1						
C201, 202	ECSZ25EF1	1μF, 25WV, Electrolytic	2						
C701, 702	ECE1T35R4700Y	4700μF, 35WV, Electrolytic	2						
VARIABLE CAPACITORS									
CV1-5 (CT1-4)	ECV5MX25X20G	Tuning Gang, AM/FM (with Trimmer)	1						
CT5	ECV1ZW06P35	FM OSC Trimmer, 6pF	1						
COMPONENT COMBINATIONS									

Ref. No.	Part No.	Description	Per Set (Pcs.)	Remarks	Ref. No.	Part No.	Description	Per Set (Pcs.)	Remarks
CH20	SHGA204	Rubber Cushion, Stereo Eye	1		P5	SPS3	Pad, Right Side	1	
CH21	SDT1A10-2S	Tuning Shaft, with Flywheel	1		P6	SPS13	Pad, Bottom Board	1	
CH22	SDDA471S	Drum, Tuning	1		P7	SPN5085	Carton Box, Inner	1	
CH23	SDDA4121	Spring, Drum	1		P8	SQF979	Printed Matter, Complete	1	
	XXAR346S	Screw, Drum M'tg.	2		P9	SPG511	Carton Box, Outer	1	
	SJS5405	4pin Socket, Lead Connector	2		P11	SPNA187	Pad, Upper Carton	1	
	SJS5603	6pin Socket, Lead Connector	1						
CH24	SJS41	Pin Clamp (SJS5405, SJS5603)	14						
	SHR4919	Lock Pin, Dial Light Filter	3						
ACCESSORIES									
A1	SSAA3	FM Antenna Cord	1		P1	SPPA16-1	Soft Cover	1	
A2	XBAS1A3301	Circuit Protection Fuse (3.3A)	2		P2	SPS5	Pad, AM Bar Antenna	1	
A3	RJPS	Pin Plug	4		P3	SPPI63	Polyethylene Bag	1	
A4	RJP16AS	AC Plug Not Belong for England	1		P4	SPS1	Pad, Left Side	1	
A5	RJP17AS	AC PLUG	1		P5	SPS3	Pad, Right Side	1	
					P6	SPG513	Carton Box	1	
					P7	SPG513	Printed Matter (only for Germany)	1	
					P8 (Germany)	SQF979	Printed Matter (only for Germany)	1	
					P8 (England)	SQF983	Printed Matter (only for England)	1	
					P9		Deletion		
					P11		Deletion		
PACKING PARTS									
P1	SPPA16-1	Soft Cover	1						
P2	SPS5	Pad, AM Bar Antenna	1						
P3	SPPI63	Polyethylene Bag	1						
P4	SPS1	Pad, Left Side	1						

SA-5250

CABINET & CHASSIS PARTS LOCATION

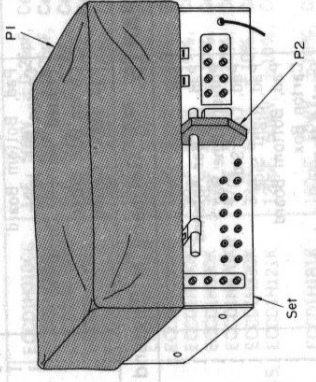


ACCESSORIES

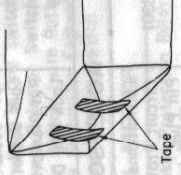
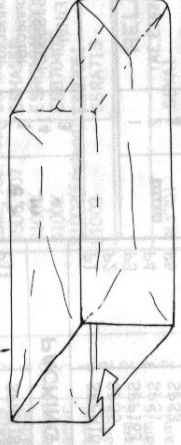
SA-5250

0353-A2

PACKING PARTS



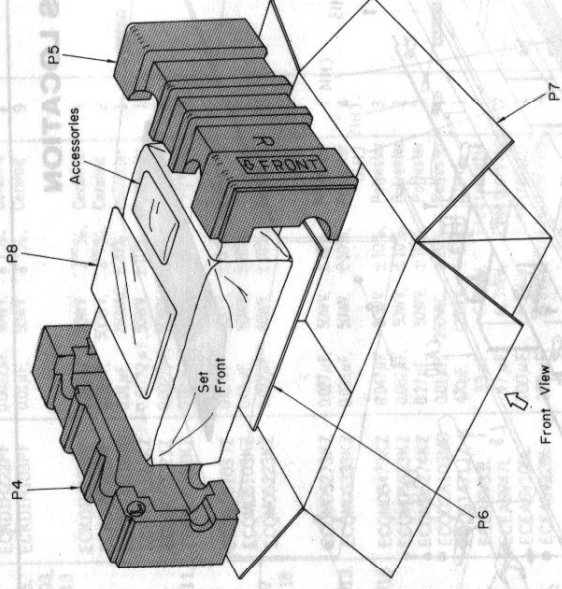
P3



Tepe

SA-5250

SA-5550



P4

P8

Set Front

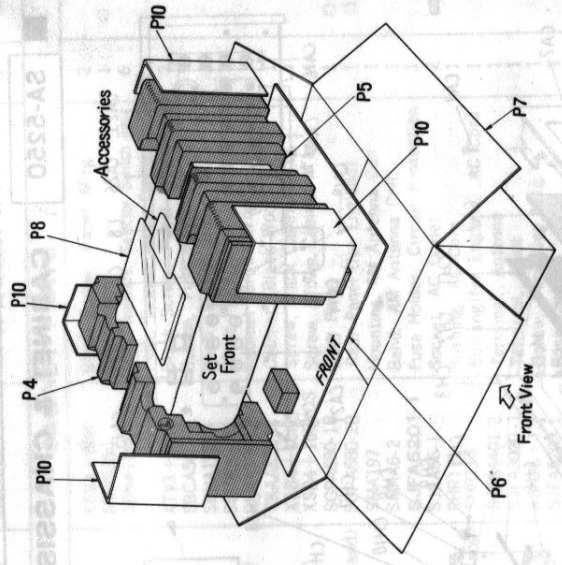
Accessories

P5

Front View

P6

P7



P4

P8

P10

Set Front

Accessories

P10

P5

Front View

P6

P7

P11

P9

P7

P9