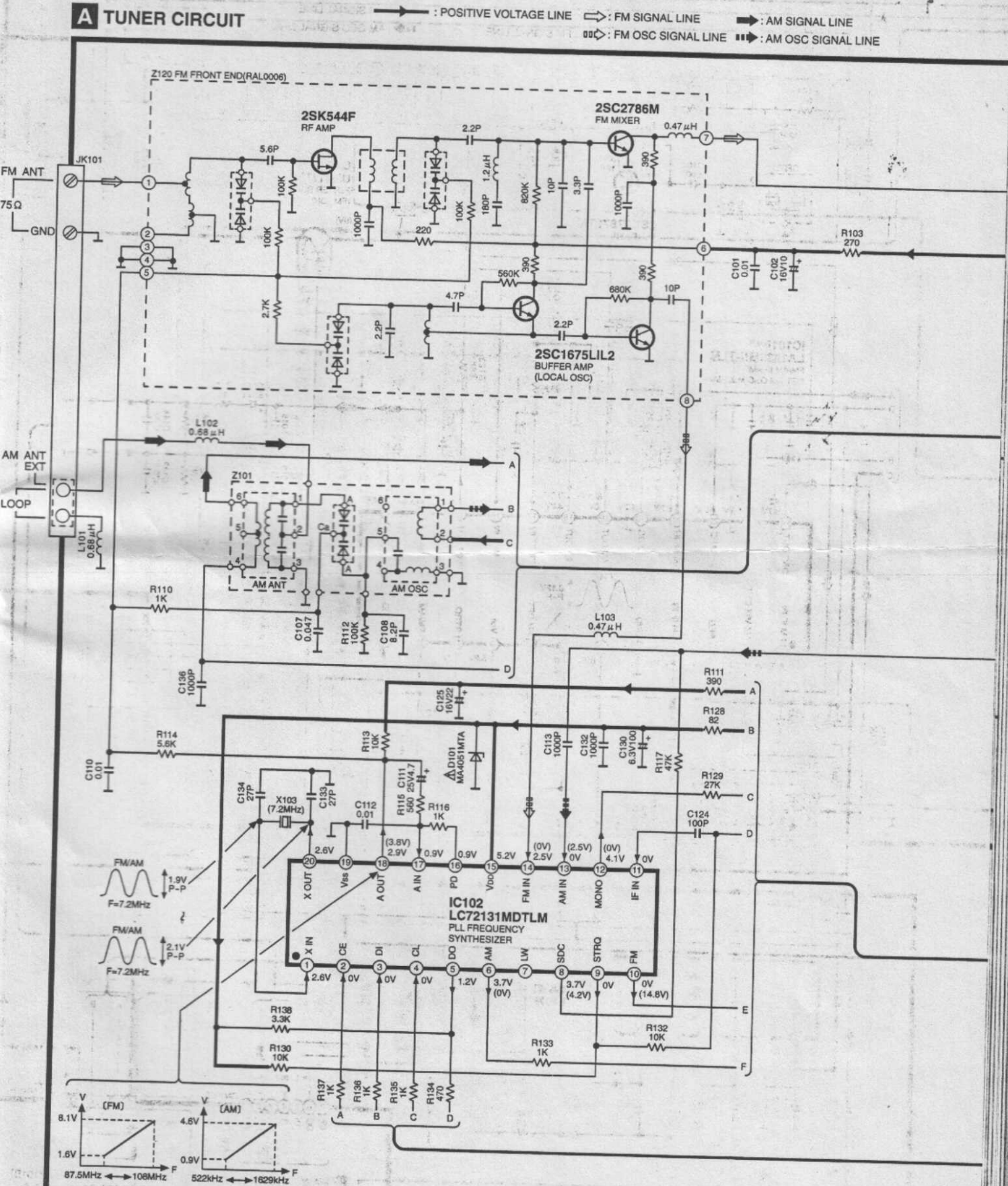


SCHEMATIC DIAGRAM-1

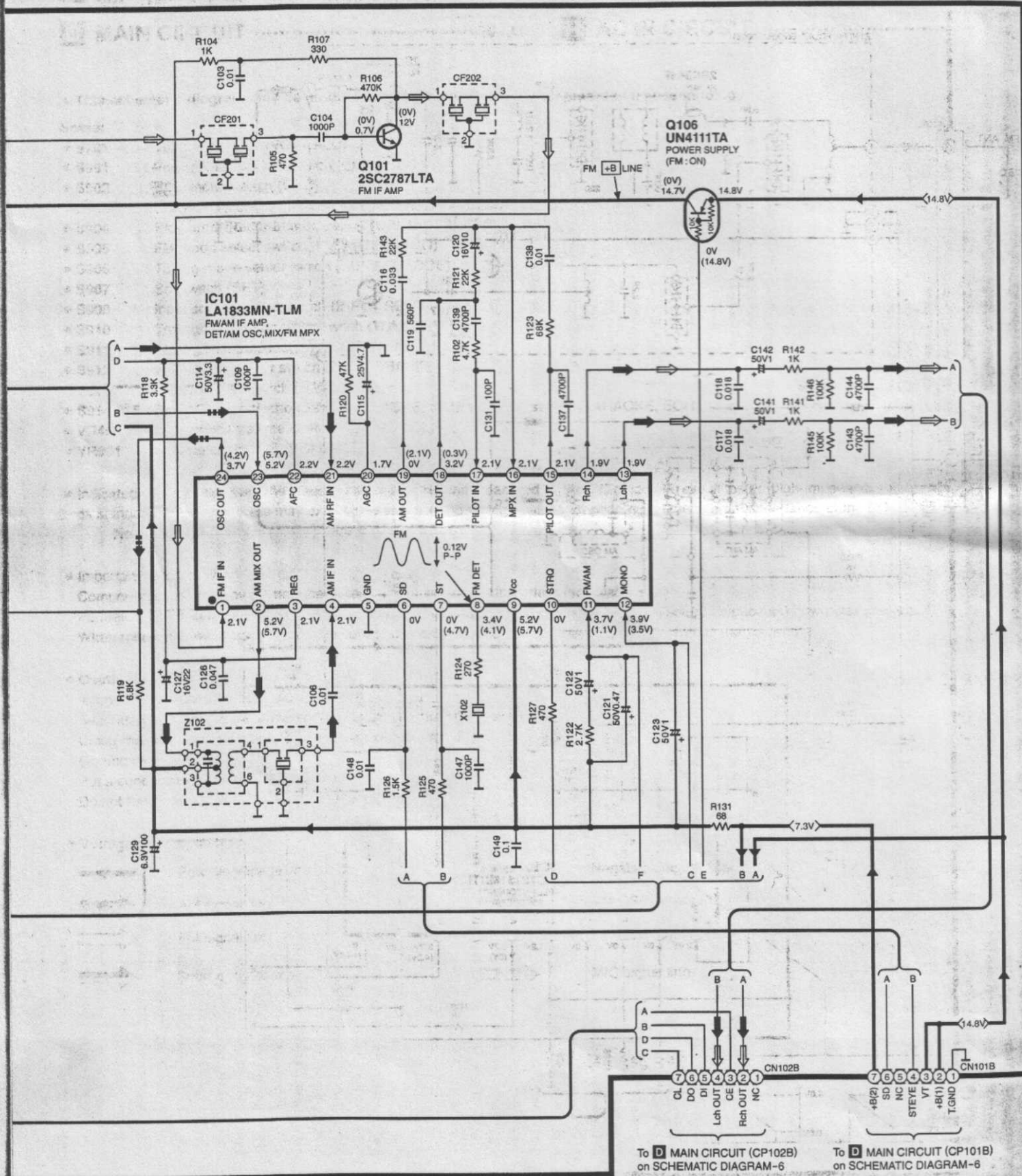
Note: The number which noted at the connectors on the schematic diagram as "SCHEMATIC DIAGRAM-1" or "SCHEMATIC DIAGRAM-2" indicates the schematic diagram serial number located on the left corner in the schematic diagram.

**A** TUNER CIRCUIT



SCHEMATIC DIAGRAM-2

: POSITIVE VOLTAGE LINE     : AM SIGNAL LINE  
 : FM SIGNAL LINE     : AM OSC SIGNAL LINE

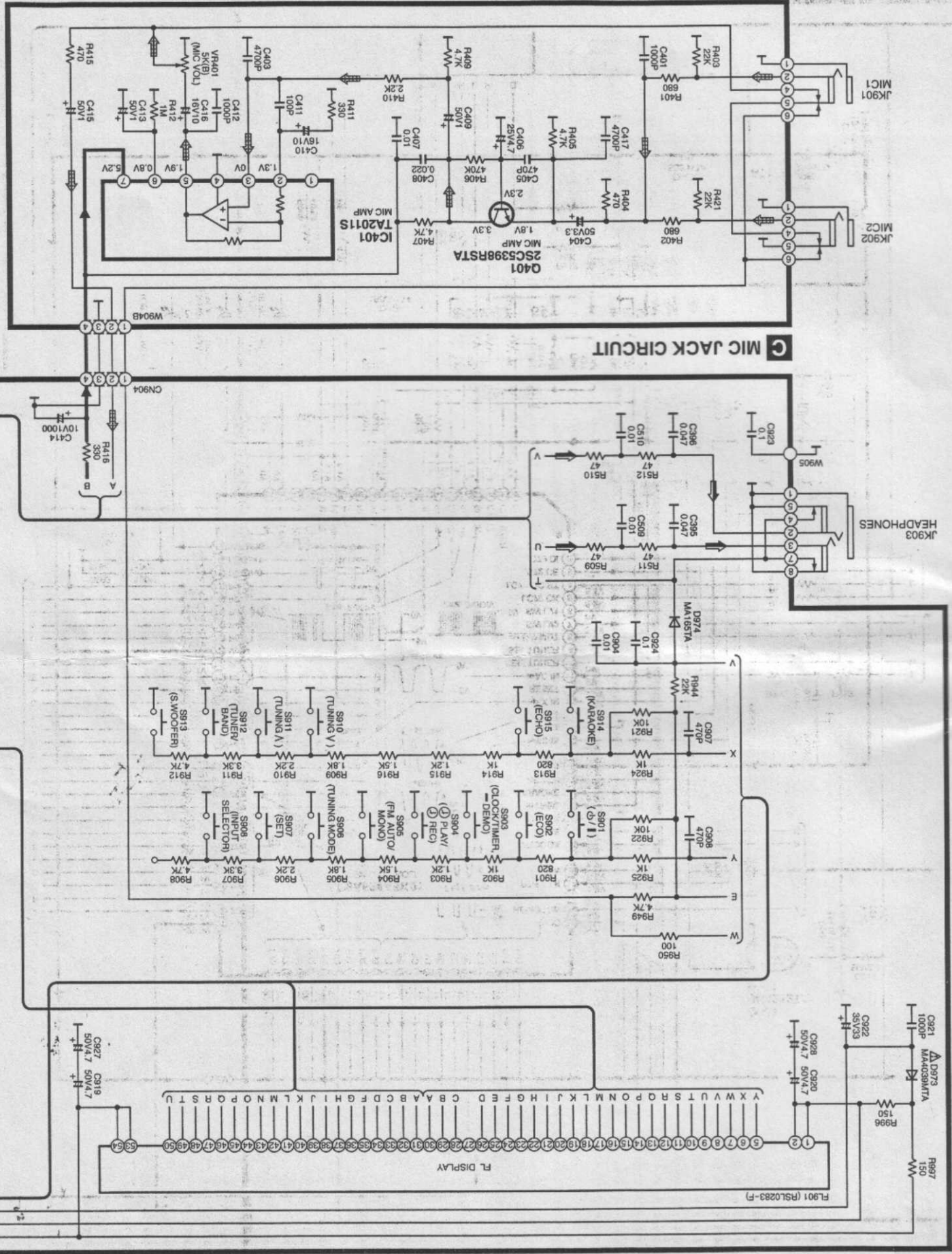


**B OPERATION CIRCUIT**

→ POSITIVE VOLTAGE LINE  
⇨ SOURCE SIGNAL LINE  
⇨ MIC SIGNAL LINE

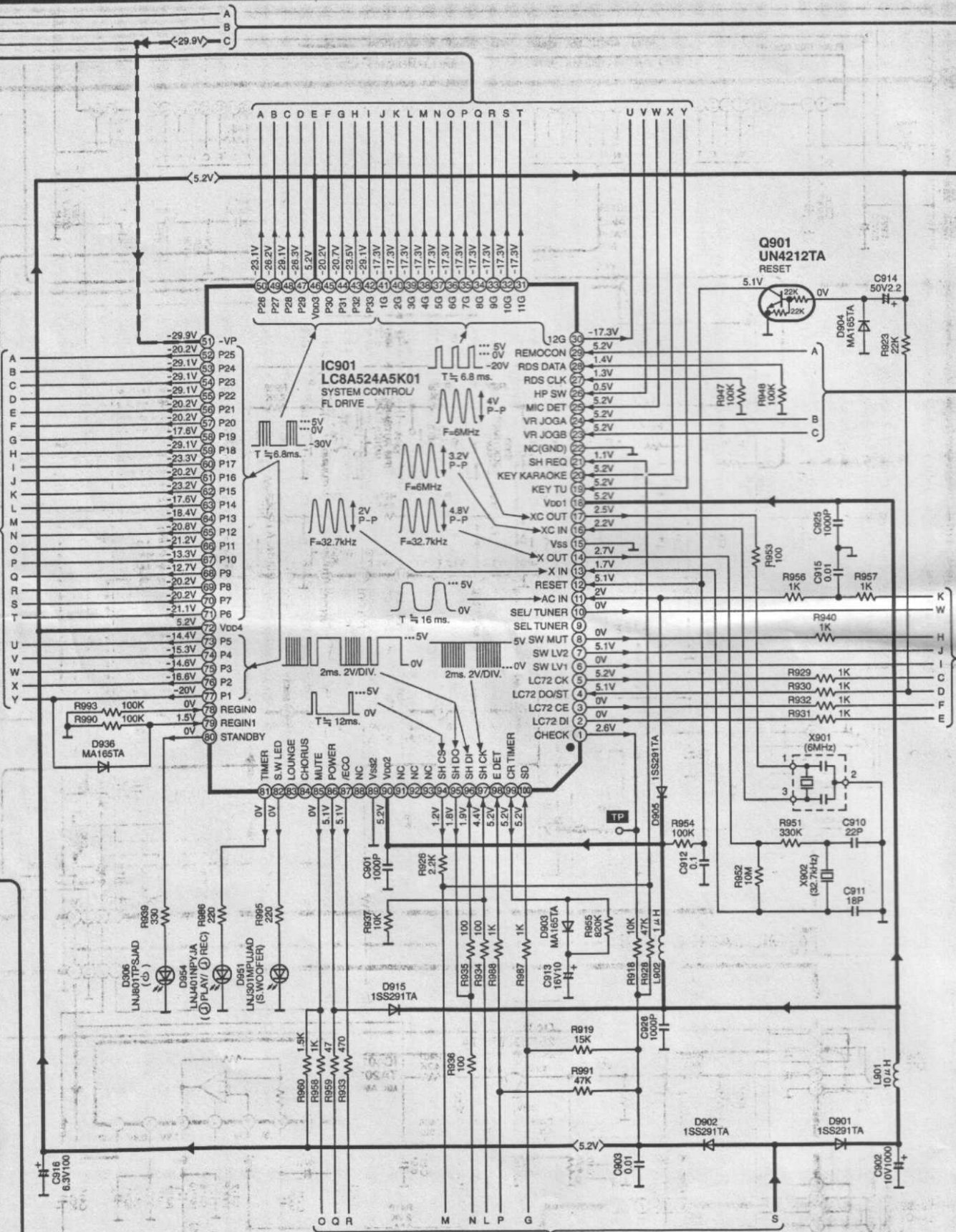
**SCHMATIC DIAGRAM-3**

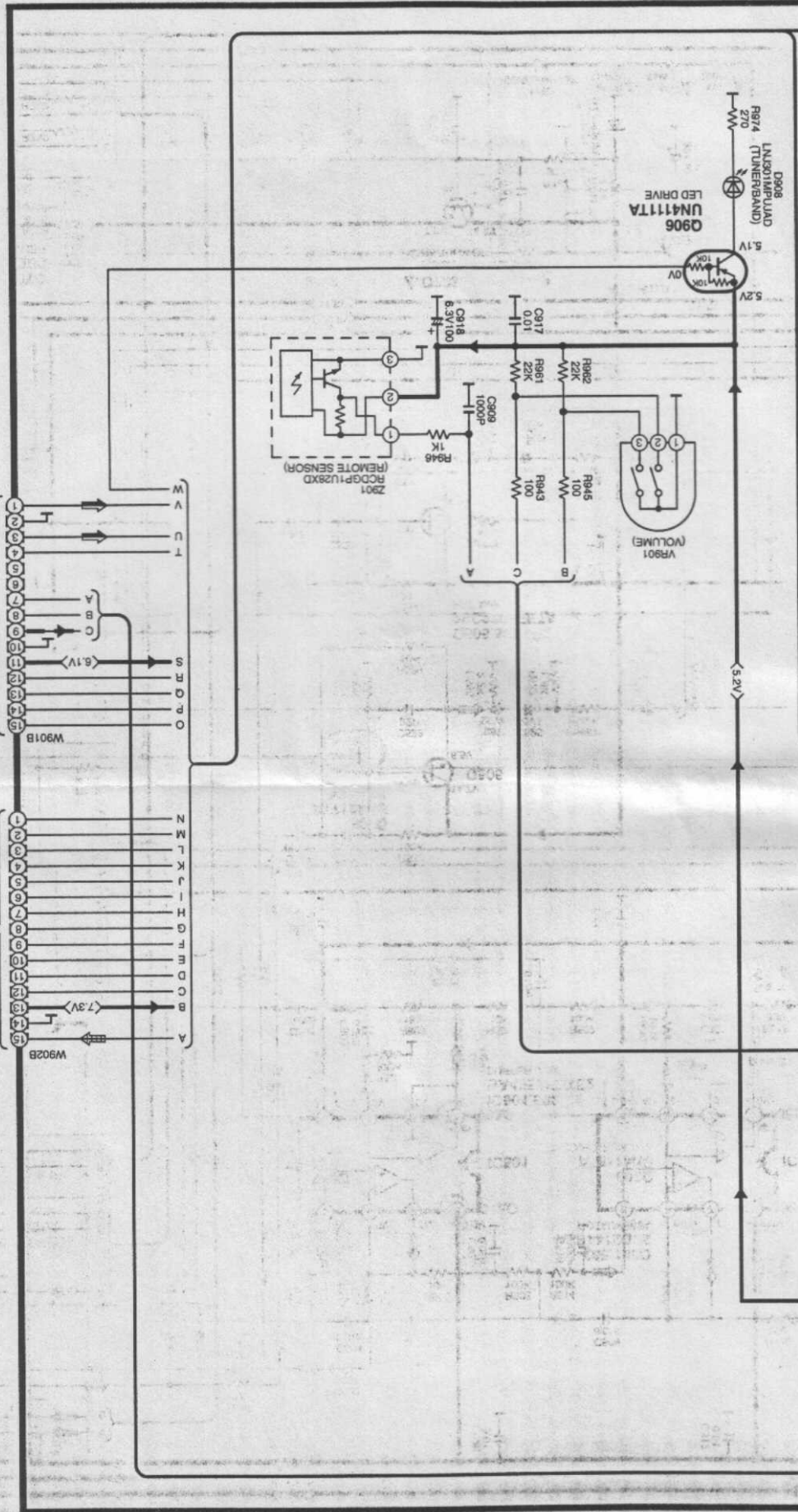
SA-EH550



SCHEMATIC DIAGRAM-4

→ : POSITIVE VOLTAGE LINE    → - - : NEGATIVE VOLTAGE LINE





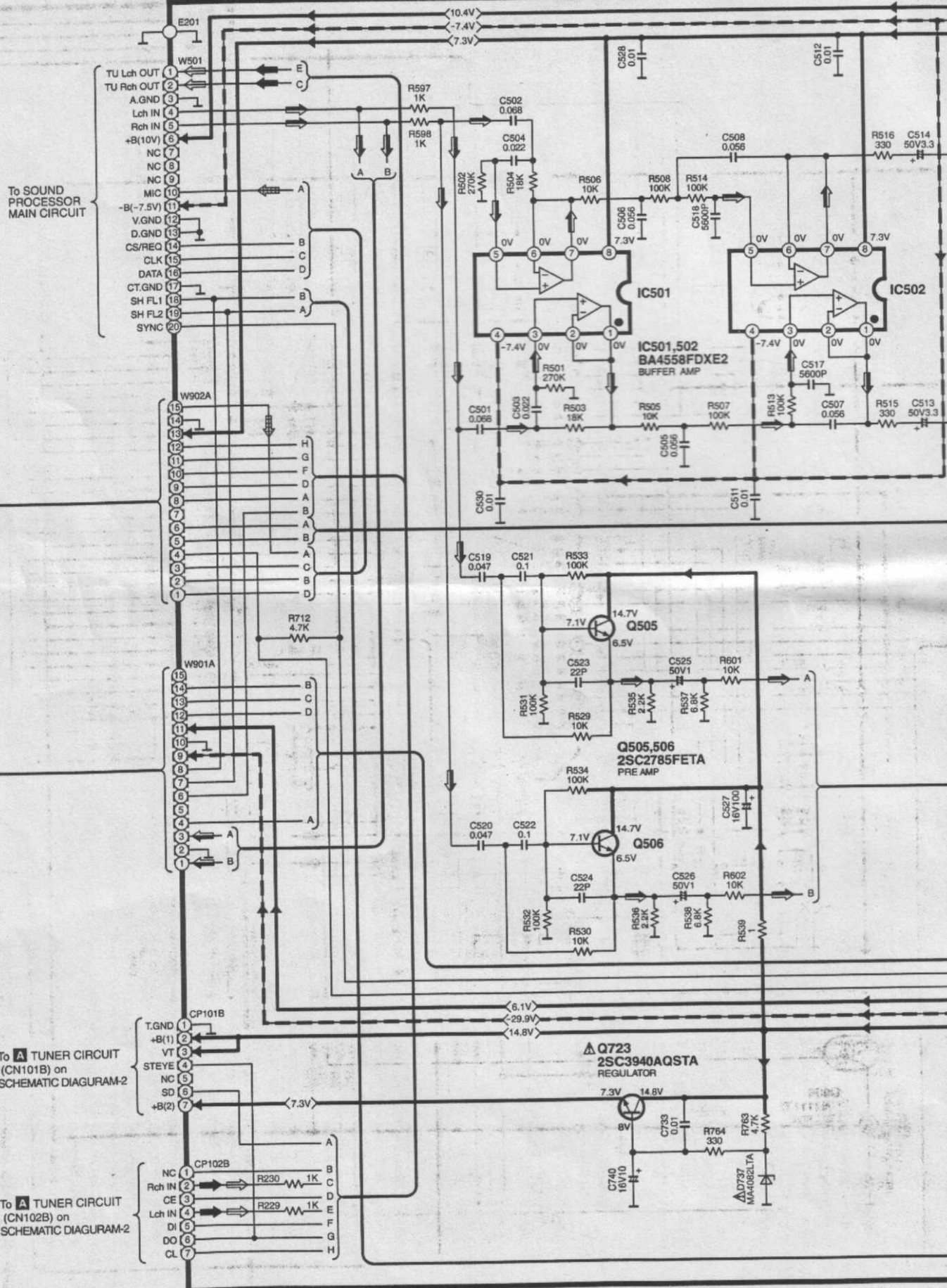
**B** OPERATION CIRCUIT  
SCHEMATIC DIAGRAM-5

———▶ : POSITIVE VOLTAGE LINE  
 ———▶ : NEGATIVE VOLTAGE LINE  
 ◀——— : SOURCE SIGNAL LINE  
 ◀——— : MIC SIGNAL LINE

SCHEMATIC DIAGRAM-6

**D** MAIN CIRCUIT

: POSITIVE VOLTAGE LINE  
 : NEGATIVE VOLTAGE LINE  
 : FM SIGNAL LINE  
 : AM SIGNAL LINE  
 : SOURCE SIGNAL LINE  
 : MIC SIGNAL LINE



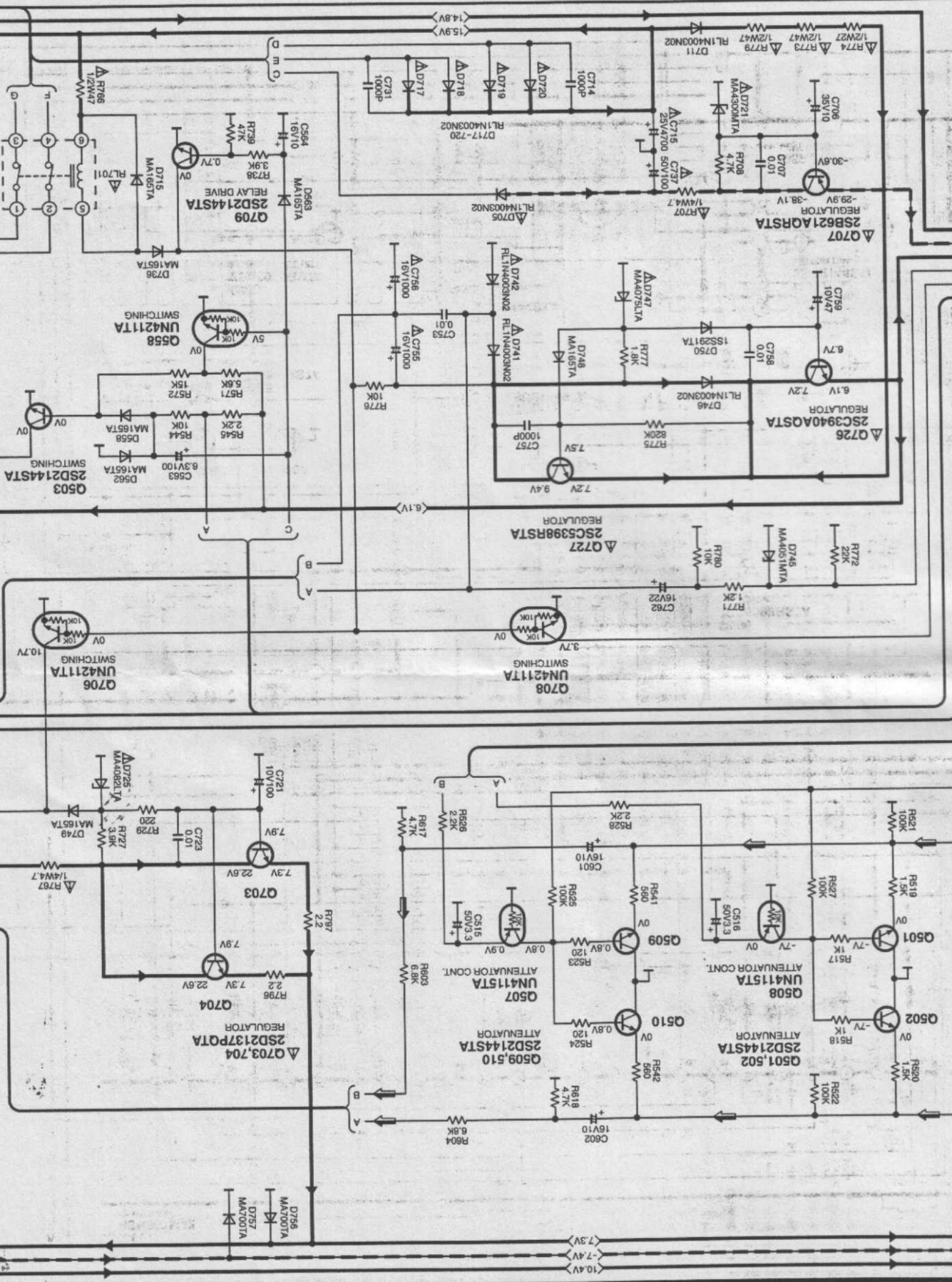
To SOUND PROCESSOR MAIN CIRCUIT

To **A** TUNER CIRCUIT (CN101B) on SCHEMATIC DIAGRAM-2

To **A** TUNER CIRCUIT (CN102B) on SCHEMATIC DIAGRAM-2

SCHEMATIC DIAGRAM-7

— — — POSITIVE VOLTAGE LINE  
- - - NEGATIVE VOLTAGE LINE  
⇨ SOURCE SIGNAL LINE



SCHEMATIC DIAGRAM-8

**D** MAIN CIRCUIT

→ : POSITIVE VOLTAGE LINE  
 - - - : NEGATIVE VOLTAGE LINE  
 ⇨ : SOURCE SIGNAL LINE

