

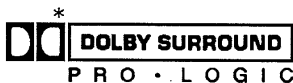
Service Manual

AV Control Stereo Receiver

Receiver

SA-G68

Simplified



Colour

(K) Black Type

Area

Suffix for Model No.	Area	Colour
(PP)	U.S.A. and Canada	(K)



* Manufactured under license from Dolby Laboratories Licensing Corporation. Additinnally licensed under one or more of the following patents: U.S. numbers 3,632,886,3,746,792 and 3,959,590; Canadian numbers 1,004,603 and 1,037,877. "Dolby" and the double-D symbol are trade marks of Dolby Laboratories Licensing Corporation.

Please file and use this Service Manual together with the Service Manual for Model No. SA-G67 (PP) Order No. MD9701001C1.

Note : This Simplified Service Manual is provided to indicate the main difference between the original Model No. SA-G67 (PP) and the subsequent Model No. SA-G68 (PP).

⚠ WARNING

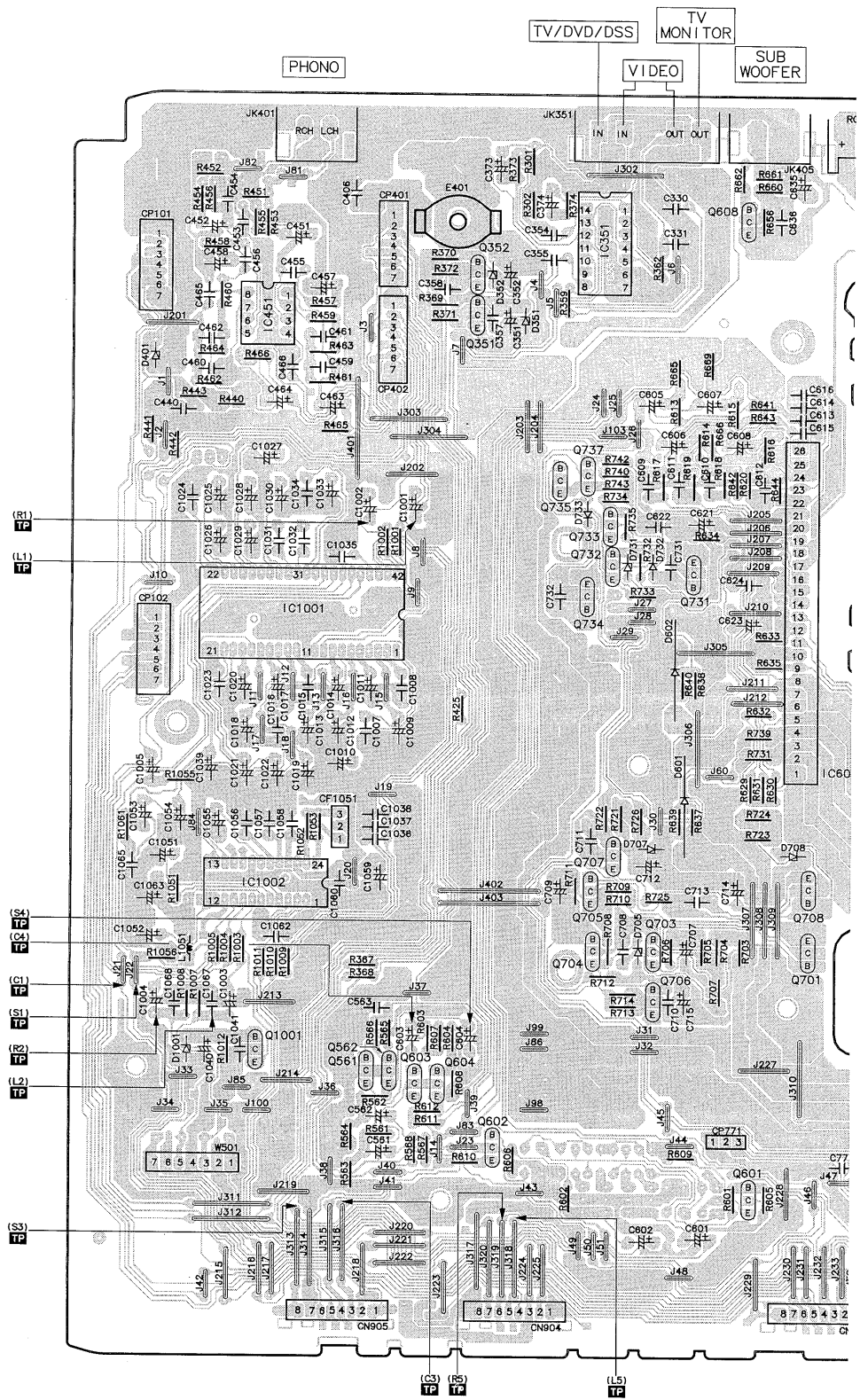
This service information is designed for experienced repair technicians only and is not designed for use by the general public. It does not contain warnings or cautions to advise non-technical individuals of potential dangers in attempting to service a product. Products powered by electricity should be serviced or repaired only by experienced professional technicians. Any attempt to service or repair the product or products dealt with in this service information by anyone else could result in serious injury or death.

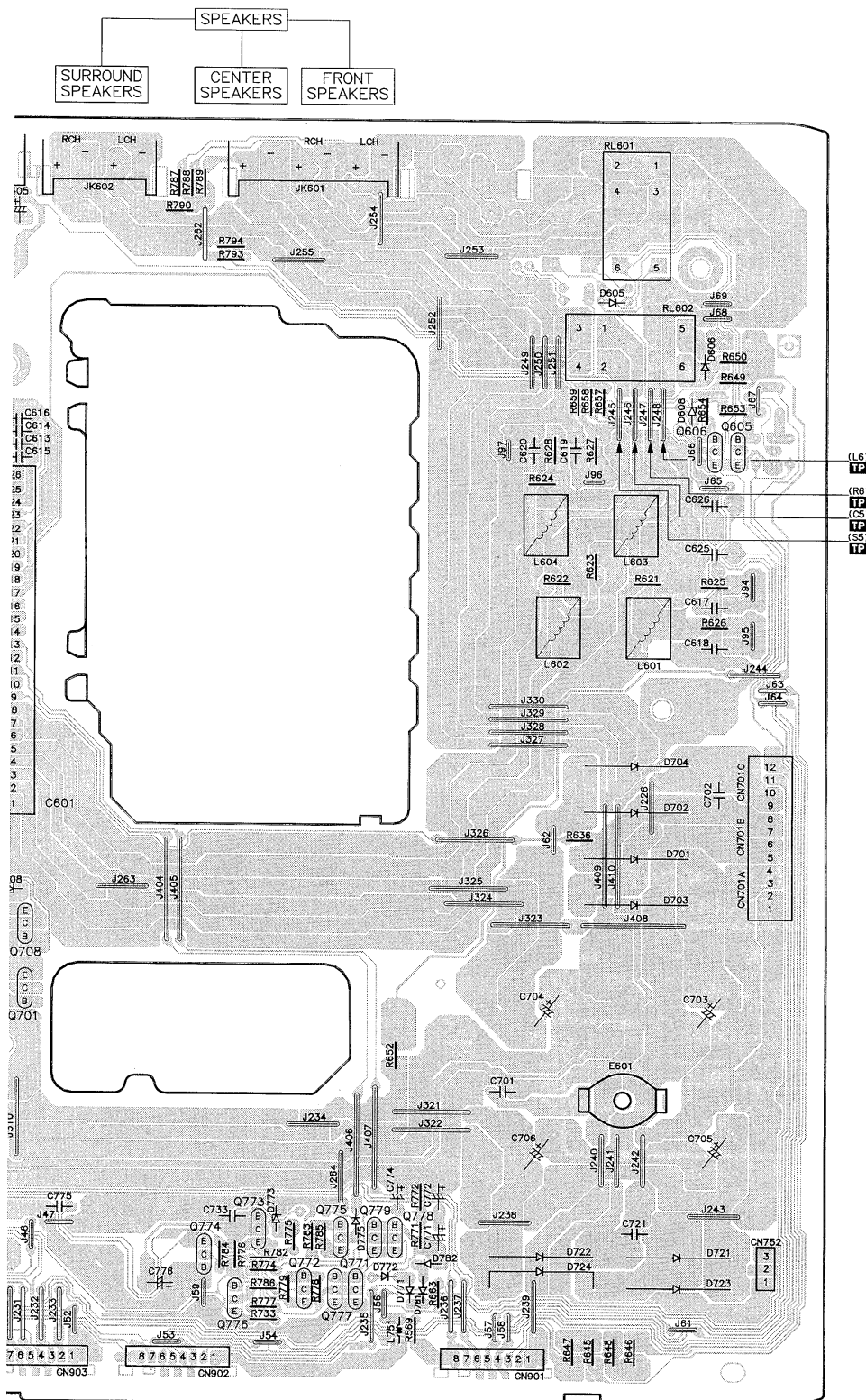
Technics®

© 1998 Matsushita Electronics (S) Pte. Ltd.
All rights reserved. Unauthorized copying and distribution is a violation of law.

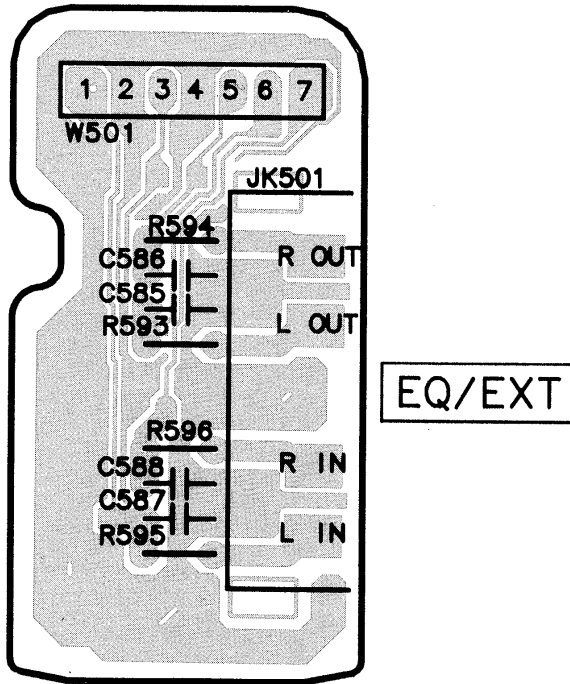
Printed Circuit Board

MAIN P.C.B. (REP2444F-M)

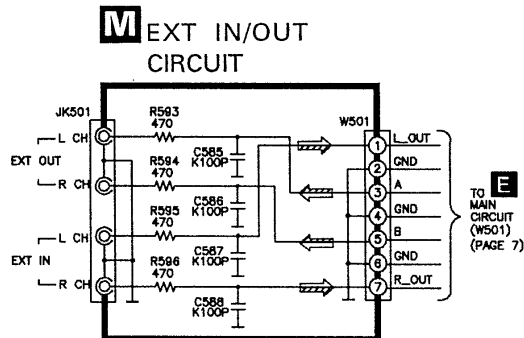




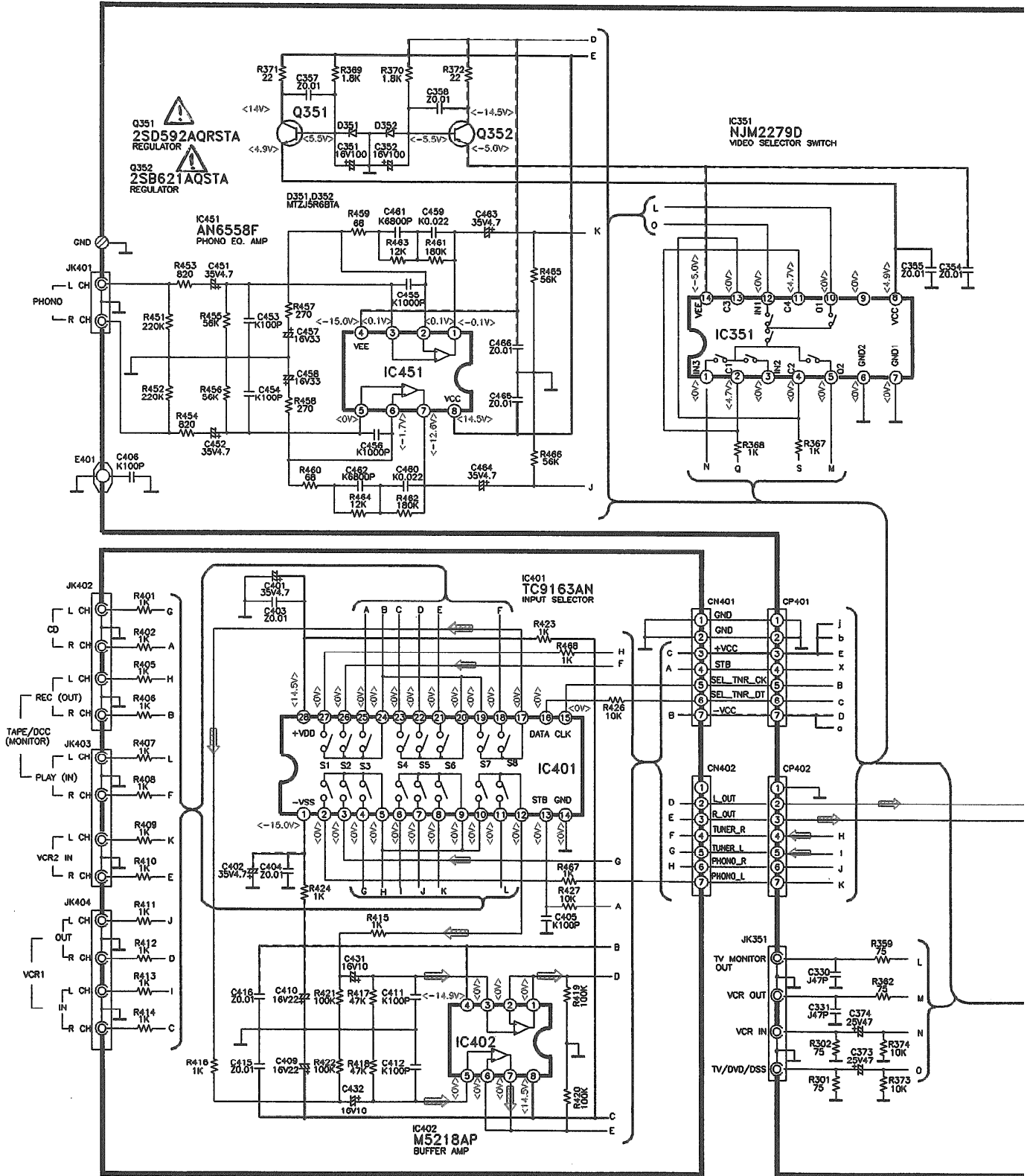
M EQ/EXT P.C.B. (REP2444F-M)



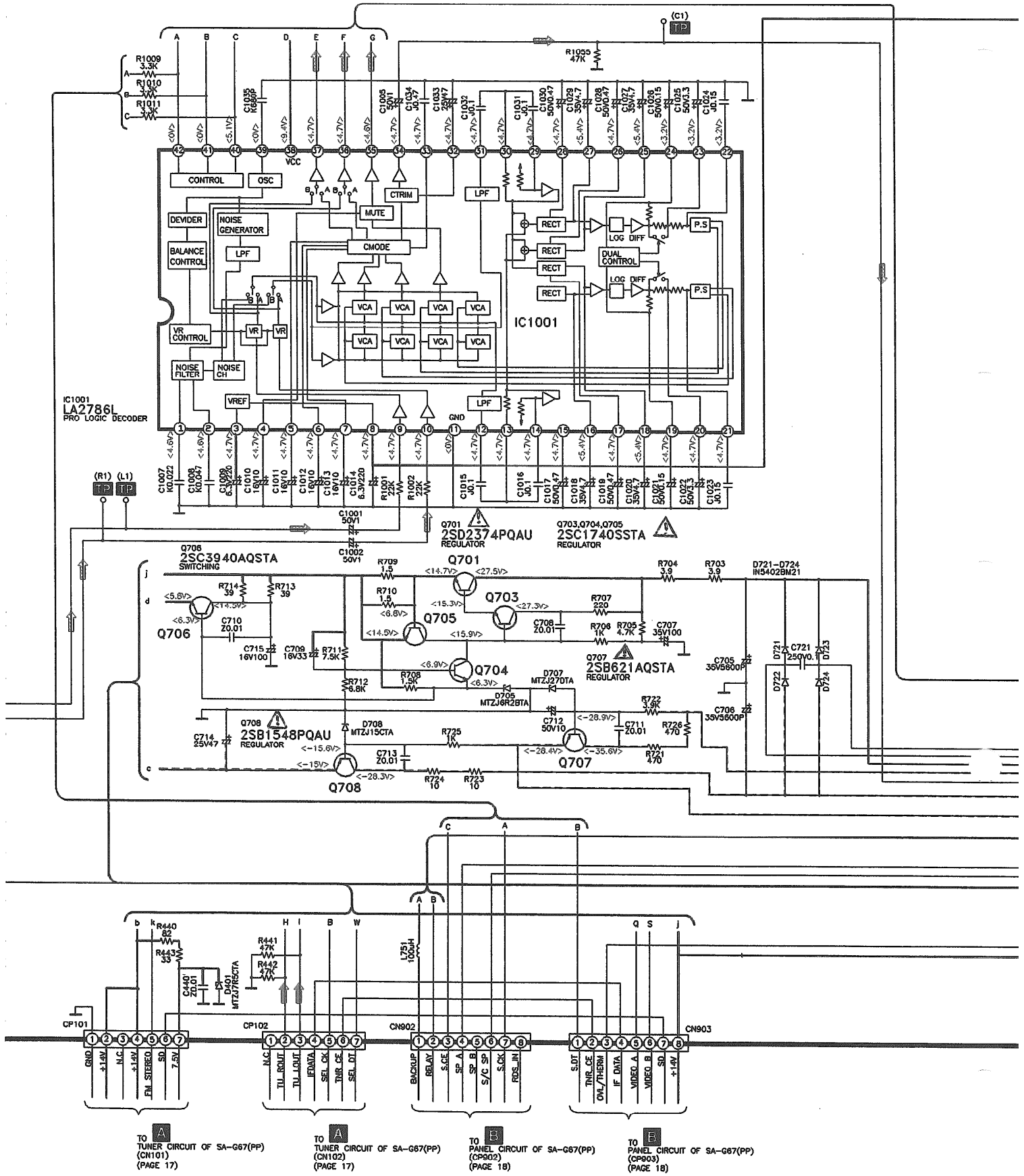
Schematic Diagram



E MAIN CIRCUIT



I IN/OUT TERMINAL CIRCUIT

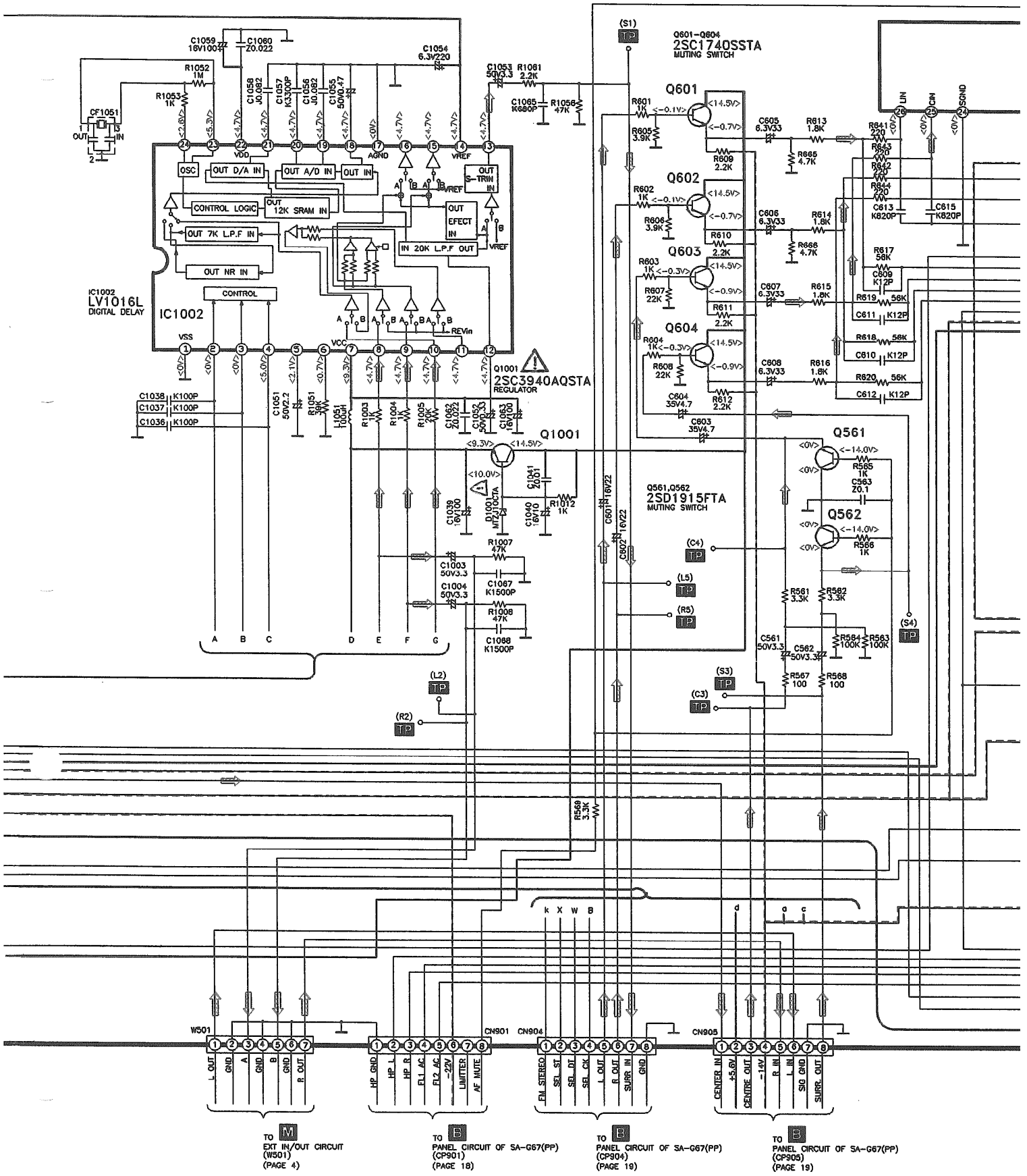


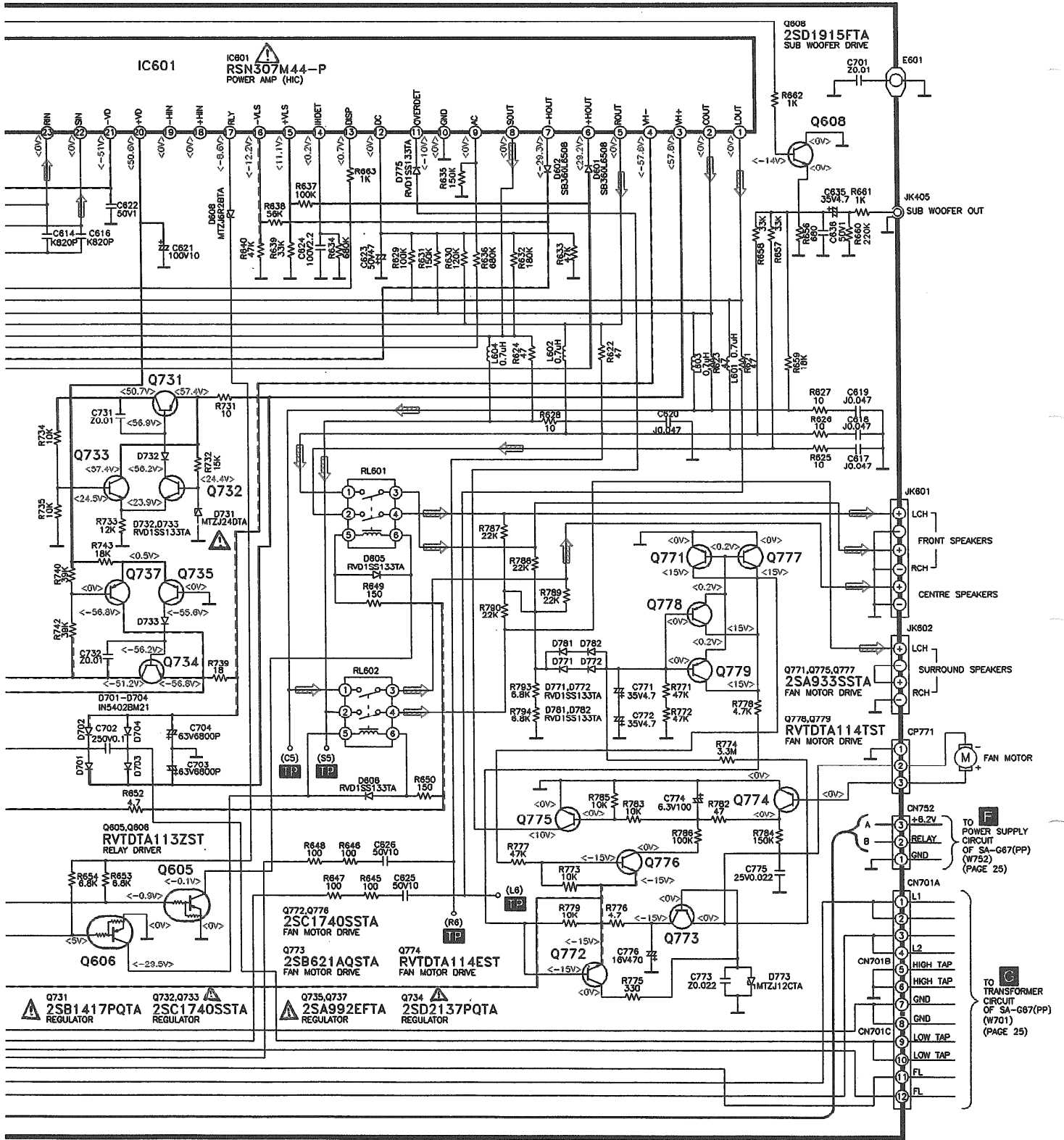
TO **A** TUNER CIRCUIT OF SA-G67(PP) (CN101) (PAGE 17)

TO **A** TUNER CIRCUIT OF SA-G67(PP) (CN102) (PAGE 17)

TO **B** PANEL CIRCUIT OF SA-G67(PP) (CP902) (PAGE 18)


TO **B** PANEL CIRCUIT OF SA-G67(PP) (CP903) (PAGE 18)





Repalcement Parts List

Notes: * Important safety notice:

Components identified by  mark have special characteristics important for safety.

Furthermore, special parts which have purposes of fire-retardant (resistors), high-quality sound (capacitors), low noise (resistors), etc are used. When replacing any of these components, be sure to use only manufacturer's specified parts shown in the parts list .

* [M] Indicates in the Remarks columns indicates parts supplied by MESA.

Ref No.	Part No.	Part Name & Description	Remarks	Ref No.	Part No.	Part Name & Description	Remarks	Ref No.	Part No.	Part Name & Description	Remarks	
		CABINET AND CHASSIS			IC451	AN6558F	IC, OP AMP	[M]	Q731	2SB1417PQTA	TRANSISTOR	[M] 
				IC501	BA6218	IC, MOTOR DRIVER	[M]	Q732	2SC1740SSTA	TRANSISTOR	[M] 	
1	RKM0374-K	TOP CABINET	[M]	IC511	UPC4570C	IC, TONE CONTROL	[M]	Q733	2SC1740SSTA	TRANSISTOR	[M] 	
2	RGR0251E-A	REAR PANEL	[M]	IC551	UPC4570C	IC, TONE CONTROL	[M]	Q734	2SD2137PQTA	TRANSISTOR	[M] 	
3	RGW0243B-K	VOLUME KNOB	[M]	IC601	RSN307M44-P	IC, HIC	[M] 	Q735	2SA992EFTA	TRANSISTOR	[M] 	
4	SKL293	LEG CUSHION	[M]	IC901	M38B53M4050F	IC, MICROCOMPUTER	[M]	Q737	2SA992EFTA	TRANSISTOR	[M] 	
5	RKQ0089-J	PCB HOLDER	[M]	IC1001	LA2786L	IC, DPL	[M]	Q751	RVTDC143XST	TRANSISTOR	[M]	
6	RMC0158-S	TRANSISTOR HOLDER	[M]	IC1002	LV1016L	IC, SURR DECODER	[M]	Q752	2SC3940AQSTA	TRANSISTOR	[M] 	
7	RMK0350	BOTTOM CHASSIS	[M]					Q771	2SA933SSTA	TRANSISTOR	[M]	
8	RMN0372	FL HOLDER	[M]			TRANSISTORS		Q772	2SC1740SSTA	TRANSISTOR	[M]	
9	SNE2123	EARTH TERMINAL	[M]					Q773	2SB621AQSTA	TRANSISTOR	[M]	
10	RXX0186	HEAT SINK UNIT	[M]	Q1	2SK544F-AC	TRANSISTOR	[M]	Q774	RVTDTA114EST	TRANSISTOR	[M]	
11	RGU1493C-K	SELECTOR BUTTON	[M]	Q2	2SC2786MTA	TRANSISTOR	[M]	Q775	2SA933SSTA	TRANSISTOR	[M]	
12	RGU1350-K	MODE BUTTON	[M]	Q3	2SC2787FL1TA	TRANSISTOR	[M]	Q776	2SC1740SSTA	TRANSISTOR	[M]	
13	RGW0244-K1	BASS TREBLE KNOB	[M]	Q4	2SC2787FL1TA	TRANSISTOR	[M]	Q777	2SA933SSTA	TRANSISTOR	[M]	
14	RHN90001	M9 NUT	[M]	Q101	2SC2787LTA	TRANSISTOR	[M]	Q778	RVTDTA114TST	TRANSISTOR	[M]	
15	RFKGSAG68PPK	FRONT PANEL ASS'Y	[M]	Q103	2SC2785FETA	TRANSISTOR	[M]	Q779	RVTDTA114TST	TRANSISTOR	[M]	
15-1	RKW0436C-Q	FL WINDOW	[M]	Q104	2SC2785FETA	TRANSISTOR	[M]	Q901	RVTDC114YST	TRANSISTOR	[M]	
15-2	RGB0031-A	TECHNICS BADGE	[M]	Q106	RVTDTA143XST	TRANSISTOR	[M]	Q902	2SA933SSTA	TRANSISTOR	[M] 	
15-3	RGP0526M-K	FRONT PANEL	[M]	Q107	2SC3311ARTA	TRANSISTOR	[M]	Q1001	2SC3940AQSTA	TRANSISTOR	[M] 	
17	SNE2129-1	SCREW (CABINET)	[M]	Q108	2SC3311ARTA	TRANSISTOR	[M]					
18	XTBS3+8JFZ1	SCREW	[M]	Q351	2SD592AQRSTA	TRANSISTOR	[M] 			DIODES		
19	XTB3+20JFZ	SCREW	[M]	Q352	2SB621AQSTA	TRANSISTOR	[M] 					
20	XTB3+8FFZ	SCREW	[M]	Q505	2SD1915FTA	TRANSISTOR	[M]	D1	SVC211SPA-AL	DIODE	[M]	
21	XTB3+30J	SCREW	[M]	Q506	2SD1915FTA	TRANSISTOR	[M]	D2	SVC211SPA-AL	DIODE	[M]	
22	XTW3+15T	SCREW	[M]	Q561	2SD1915FTA	TRANSISTOR	[M]	D3	SVC211SPA-AL	DIODE	[M]	
23	RHD26016	SCREW	[M]	Q562	2SD1915FTA	TRANSISTOR	[M]	D101	MTZJ5R1BTA	DIODE	[M]	
24	XTBS26+10J	SCREW	[M]	Q601	2SC1740SSTA	TRANSISTOR	[M]	D102	RVD1SS133TA	DIODE	[M]	
25	RSC0027-1	SHIELD CASE	[M]	Q602	2SC1740SSTA	TRANSISTOR	[M]	D351	MTZJ5R6BTA	DIODE	[M]	
26	RMQ0709	TUNER PCB BRACKET	[M]	Q603	2SC1740SSTA	TRANSISTOR	[M]	D352	MTZJ5R6BTA	DIODE	[M]	
28	REM0069	FAN UNIT	[M]	Q604	2SC1740SSTA	TRANSISTOR	[M]	D401	MTZJ7R5CTA	DIODE	[M]	
31	RGU1352A-K	DOLBY BUTTON	[M]	Q605	RVTDTA113ZST	TRANSISTOR	[M]	D601	SB360L6508	DIODE	[M]	
35	SJS9234A	AC INLET COVER	[M]	Q606	RVTDTA113ZST	TRANSISTOR	[M]	D602	SB360L6508	DIODE	[M]	
36	SJS9233A	AC OUTLET COVER	[M]	Q608	2SD1915FTA	TRANSISTOR	[M]	D605	RVD1SS133TA	DIODE	[M]	
37	RJR0180	SHORE PIN	[M]	Q681	2SD1915FTA	TRANSISTOR	[M]	D606	RVD1SS133TA	DIODE	[M]	
				Q682	2SD1915FTA	TRANSISTOR	[M]	D608	MTZJ6R2BTA	DIODE	[M]	
		INTEGRATED CIRCUITS			Q701	2SD2374PQAU	TRANSISTOR	[M] 	D701	1N5402BM21	DIODE	[M] 
				Q703	2SC1740SSTA	TRANSISTOR	[M] 	D702	1N5402BM21	DIODE	[M] 	
IC101	LA1832A	IC, IF/MPX	[M]	Q704	2SC1740SSTA	TRANSISTOR	[M] 	D703	1N5402BM21	DIODE	[M] 	
IC102	LC7218	IC, PLL	[M]	Q705	2SC1740SSTA	TRANSISTOR	[M] 	D704	1N5402BM21	DIODE	[M] 	
IC351	NJM2279D	IC, VIDEO SELECT SW	[M]	Q706	2SC3940AQSTA	TRANSISTOR	[M]	D705	MTZJ6R2BTA	DIODE	[M] 	
IC401	TC9163AN	IC, SELECTOR	[M]	Q707	2SB621AQSTA	TRANSISTOR	[M] 	D707	MTZJ27DTA	DIODE	[M] 	
IC402	M5218AP	IC, BUFFER AMP	[M]	Q708	2SB1548PQAU	TRANSISTOR	[M] 	D708	MTZJ15CTA	DIODE	[M] 	

Ref No.	Part No.	Part Name & Description	Remarks	Ref No.	Part No.	Part Name & Description	Remarks	Ref No.	Part No.	Part Name & Description	Remarks
D721	1N5402BM21	DIODE	[M]	S963	EVQ21405R	TACT SWITCH	[M]	L602	RLQYR73MW-E	CHOKE COIL	[M]
D722	1N5402BM21	DIODE	[M]	S964	EVQ21405R	TACT SWITCH	[M]	L603	RLQYR73MW-E	CHOKE COIL	[M]
D723	1N5402BM21	DIODE	[M]	S970	EVQ21405R	TACT SWITCH	[M]	L604	RLQYR73MW-E	CHOKE COIL	[M]
D724	1N5402BM21	DIODE	[M]	S972	EVQ21405R	TACT SWITCH	[M]	L751	ELESN101KA	CHOKE COIL	[M]
D731	MTZJ24DTA	DIODE	[M]	S974	EVQ21405R	TACT SWITCH	[M]	L901	RLQB101KTA-Y	CHOKE COIL	[M]
D732	RVD1SS133TA	DIODE	[M]	S980	EVQ21405R	TACT SWITCH	[M]	L1051	ELESN101KA	CHOKE COIL	[M]
D733	RVD1SS133TA	DIODE	[M]					T701	RTP2N5C008	P. TRANSFORMER	[M]
D751	1SR35200TB	DIODE	[M]					T751	RTP1H5C001-V	P. TRANSFORMER (S)	[M]
D752	1SR35200TB	DIODE	[M]								
D753	1SR35200TB	DIODE	[M]	CN101	RJU057W007	7P CONNECTOR	[M]				
D754	1SR35200TB	DIODE	[M]	CN102	RJU057W007	7P CONNECTOR	[M]				
D755	RVD1SS133TA	DIODE	[M]	CN401	RJU100W07	7P CONNECTOR	[M]	Z101	RLA2Z002M-T	AM ANT. COIL	[M]
D756	MTZJ6R8BTA	DIODE	[M]	CN402	RJU100W07	7P CONNECTOR	[M]	Z102	RLI2Z006M-T	AM IFT	[M]
D771	RVD1SS133TA	DIODE	[M]	CN501	RJU100W07	7P CONNECTOR	[M]	Z751	ERZV10V511CS	ZNR	[M]
D772	RVD1SS133TA	DIODE	[M]	CN502	RJU100W04	4P CONNECTOR	[M]	Z891	RCDSPS4242N	REMOTE SENSOR	[M]
D773	MTZJ12CTA	DIODE	[M]	CN701A	RJS1A6604T1	4P CONNECTOR	[M]				
D775	RVD1SS133TA	DIODE	[M]	CN701B	RJS1A6604T1	4P CONNECTOR	[M]				
D781	RVD1SS133TA	DIODE	[M]	CN701C	RJS1A6604T1	4P CONNECTOR	[M]				
D782	RVD1SS133TA	DIODE	[M]	CN751	SJS305-1	3P CONNECTOR	[M]	CF201	RLFFETMGD01L	CERAMIC FILTER	[M]
D901	1SS291TA	DIODE	[M]	CN752	RJS1A6603T1	3P TAPING CONNECT	[M]	CF202	RLFFETMGD01L	CERAMIC FILTER	[M]
D903	MTZJ4R7BTA	DIODE	[M]	CN901	RJU003K008M1	BOAD IN CONNECTOR	[M]	CF901	RVCBST4R00MT	CERAMIC OSC	[M]
D908	MA167ATA	DIODE	[M]	CN902	RJU003K008M1	BOAD IN CONNECTOR	[M]	CF1051	EF0EC8004T4	CERAMIC OSC	[M]
D921	RVD1SS133TA	DIODE	[M]	CN903	RJU003K008M1	BOAD IN CONNECTOR	[M]				
D923	RVD1SS133TA	DIODE	[M]	CN904	RJU003K008M1	BOAD IN CONNECTOR	[M]				
D924	MTZJ3R9ATA	DIODE	[M]	CN905	RJU003K008M1	BOAD IN CONNECTOR	[M]				
D1001	MTZJ10CTA	DIODE	[M]	CP101	RJT057W007-1	7P CONNECTOR	[M]	RL601	RSY0013M-0	RELAY	[M]
				CP102	RJT057W007-1	7P CONNECTOR	[M]	RL602	RSY0013M-0	RELAY	[M]
		VARIABLE RESISTORS		CP401	RJT100W07	7P CONNECTOR	[M]	RL751	RSY0019M-0	12V TV-5 RELAY	[M]
				CP402	RJT100W07	7P CONNECTOR	[M]				
VR501	EUWMRH026B15	VR, MOTOR	[M]	CP501	RJT100W07	7P CONNECTOR	[M]				
VR502	EVJ02QF01G15	VR, BAL. CONTROL	[M]	CP502	RJT100W04	4P CONNECTOR	[M]				
VR511	EVJYA1F01C15	VR, TONE CONTROL	[M]	CP771	RJP3G4YA	CONNECTOR	[M]	X101	RSXZ456KM07M	CERAMIC OSC	[M]
VR512	EVJYA1F01C15	VR, TONE CONTROL	[M]	CP901	RJT003K008M1	8P CONNECTOR	[M]	X102	RLFDGTD01I	FM REZONATOR	[M]
				CP902	RJT003K008M1	8P CONNECTOR	[M]	X103	SVQ49U722T-S	CRYSTAL 7.2MHZ	[M]
				CP903	RJT003K008M1	8P CONNECTOR	[M]				
		SWITCHES		CP904	RJT003K008M1	8P CONNECTOR	[M]				
				CP905	RJT003K008M1	8P CONNECTOR	[M]				
S946	EVQ21405R	TACT SWITCH	[M]					FL901	RSL0233-F	FL	[M]
S947	EVQ21405R	TACT SWITCH	[M]								
S948	EVQ21405R	TACT SWITCH	[M]								
S950	EVQ21405R	TACT SWITCH	[M]								
S951	EVQ21405R	TACT SWITCH	[M]								
S952	EVQ21405R	TACT SWITCH	[M]	L1	RLQZP1R2JT-Y	RF CHOKE COIL	[M]				
S953	EVQ21405R	TACT SWITCH	[M]	L2	RLQZPR47KT-Y	RF CHOKE COIL	[M]	F1	XBA1C50NBAL	FUSE	[M]
S955	EVQ21405R	TACT SWITCH	[M]	L101	ELESN1R5MA	CHOKE COIL	[M]	F3	XBA1C80NBAL	FUSE	[M]
S956	EVQ21405R	TACT SWITCH	[M]	L103	ELEXTR47MA9	CHOKE COIL	[M]	F4	XBA1C80NBAL	FUSE	[M]
S957	EVQ21405R	TACT SWITCH	[M]	L501	RLQZP1R0KT-Y	AXIAL COIL	[M]				
S960	EVQ21405R	TACT SWITCH	[M]	L502	RLQZP1R0KT-Y	AXIAL COIL	[M]				
S961	EVQ21405R	TACT SWITCH	[M]	L601	RLQYR73MW-E	CHOKE COIL	[M]	FC701	RJR0169T	FUSE HOLDER	[M]
S962	EVQ21405R	TACT SWITCH	[M]					FC702	RJR0169T	FUSE HOLDER	[M]

Ref No.	Part No.	Part Name & Description	Remarks	Ref No.	Part No.	Part Name & Description	Remarks	Ref No.	Part No.	Part Name & Description	Remarks
FC703	RJR0169T	FUSE HOLDER	[M]								
FC704	RJR0169T	FUSE HOLDER	[M]								
FC705	RJR0169T	FUSE HOLDER	[M]								
FC706	RJR0169T	FUSE HOLDER	[M]								
		JACKS									
HP601	RJJ63TS01	JK, HEADPHONES	[M]								
JK101	RJH4405	JK, ANT TERMINAL	[M]								
JK351	SJF3069-3N	JK, RCA PIN	[M]								
JK401	SJF3068-7N	JK, RCA TERMINAL	[M]								
JK402	SJF3069N	JK, LINE IN	[M]								
JK403	SJF3069N	JK, LINE IN	[M]								
JK404	SJF3069N	JK, LINE IN	[M]								
JK405	SJFD7	JK, FM MULTI OUT	[M]								
JK501	SJF3069N	JK, LINE IN	[M]								
JK601	RJH5601	JK, SP TERMINAL	[M]								
JK602	RJR0054	JK, SP TERMINAL	[M]								
JK791	SJS9234B	JK, AC INLET	[M] ⚠								
JK792	SJS9233B	JK, AC OUTLET	[M] ⚠								
		EARTH TERMINALS									
E401	SNE1004-2	EARTH TERMINAL	[M]								
E601	SNE1004-2	EARTH TERMINAL	[M]								
		WIRES									
W1	REE0769	WIRE UNIT	[M]								
W2	REE0770	WIRE UNIT	[M]								
W3	REE0771	WIRE UNIT	[M]								
W501	RWJ1807270CC	WIRE	[M]								
W701	RWJ1812150CQ	WIRE	[M]								
W752	RWJ1803250CQ	WIRE	[M]								
		PACKING MATERIALS									
P1	RPF0005	MIRAMAT BAG	[M]								
P2	RPG3782	PACKING CASE	[M]								
P3	RPN0865	POLYFOAM	[M]								

Resistors & Capacitors

Notes : * Capacitor values are in microfarads (μF) unless specified otherwise, P=Pico-farads (pF), F=Farads.
 * Resistance values are in ohms, unless specified otherwise, 1K=1,000 (OHM).
 * Bracketed indications in Values & Remarks columns specify the area (Refer to the first page for area).
 Parts without these indications can be used for all areas.
 * [M] Indicates in the values & remarks column indicates parts supplied by MESA

Ref. No.	Part No.	Values & Remarks	Ref. No.	Part No.	Values & Remarks	Ref. No.	Part No.	Values & Remarks	Ref. No.	Part No.	Values & Remarks
		RESISTORS									
R1	ERDS2TJ104T	100K 1/4W [M]	R137	ERDS2TJ102T	1K 1/4W [M]	R417	ERDS2TJ473T	47K 1/4W [M]	R514	ERDS2TJ474T	470K 1/4W [M]
R2	ERDS2TJ104T	100K 1/4W [M]	R139	ERDS2TJ272T	2.7K 1/4W [M]	R418	ERDS2TJ473T	47K 1/4W [M]	R515	ERDS2TJ474T	470K 1/4W [M]
R3	ERDS2TJ221T	220 1/4W [M]	R140	ERDS2TJ272T	2.7K 1/4W [M]	R419	ERDS2TJ104T	100K 1/4W [M]	R516	ERDS2TJ474T	470K 1/4W [M]
R4	ERDS2TJ104T	100K 1/4W [M]	R141	ERDS2TJ103T	10K 1/4W [M]	R420	ERDS2TJ104T	100K 1/4W [M]	R517	ERDS2TJ332T	3.3K 1/4W [M]
R5	ERDS2TJ564T	560K 1/4W [M]	R142	ERDS2TJ103T	10K 1/4W [M]	R421	ERDS2TJ104T	100K 1/4W [M]	R518	ERDS2TJ332T	3.3K 1/4W [M]
R6	ERDS2TJ391T	390 1/4W [M]	R143	ERDS2TJ222T	2.2K 1/4W [M]	R422	ERDS2TJ104T	100K 1/4W [M]	R519	ERDS2TJ222T	2.2K 1/4W [M]
R7	ERDS2TJ272T	2.7K 1/4W [M]	R144	ERDS2TJ222T	2.2K 1/4W [M]	R423	ERDS2TJ102T	1K 1/4W [M]	R520	ERDS2TJ222T	2.2K 1/4W [M]
R8	ERDS2TJ684T	680K 1/4W [M]	R145	ERDS2TJ102T	1K 1/4W [M]	R424	ERDS2TJ102T	1K 1/4W [M]	R521	ERDS2TJ223T	22K 1/4W [M]
R9	ERDS2TJ391T	390 1/4W [M]	R146	ERDS2TJ102T	1K 1/4W [M]	R425	ERDS2TJ103T	10K 1/4W [M]	R522	ERDS2TJ223T	22K 1/4W [M]
R10	ERDS2TJ391T	390 1/4W [M]	R147	ERDS2TJ474T	470K 1/4W [M]	R426	ERDS2TJ103T	10K 1/4W [M]	R523	ERDS2TJ392T	3.9K 1/4W [M]
R11	ERDS2TJ684T	680K 1/4W [M]	R148	ERDS2TJ474T	470K 1/4W [M]	R427	ERDS2TJ103T	10K 1/4W [M]	R524	ERDS2TJ392T	3.9K 1/4W [M]
R103	ERDS2TJ151T	150 1/4W [M]	R149	ERDS2TJ680T	68 1/4W [M]	R440	ERDS1FVJ820T	82 1/2W [M]	R525	ERDS2TJ222T	2.2K 1/4W [M]
R104	ERDS2TJ102T	1K 1/4W [M]	R171	ERDS2TJ102T	1K 1/4W [M]	R441	ERDS2TJ473T	47K 1/4W [M]	R526	ERDS2TJ222T	2.2K 1/4W [M]
R105	ERDS2TJ471T	470 1/4W [M]	R172	ERDS2TJ102T	1K 1/4W [M]	R442	ERDS2TJ473T	47K 1/4W [M]	R527	ERDS2TJ122T	1.2K 1/4W [M]
R106	ERDS2TJ224T	220K 1/4W [M]	R173	ERDS2TJ471T	470 1/4W [M]	R443	ERDS2TJ330T	33 1/4W [M]	R528	ERDS2TJ122T	1.2K 1/4W [M]
R107	ERDS2TJ471T	470 1/4W [M]	R175	ERDS2TJ102T	1K 1/4W [M]	R451	ERDS2TJ224T	220K 1/4W [M]	R529	ERDS2TJ273T	27K 1/4W [M]
R110	ERDS2TJ102T	1K 1/4W [M]	R176	ERDS2TJ391T	390 1/4W [M]	R452	ERDS2TJ224T	220K 1/4W [M]	R530	ERDS2TJ273T	27K 1/4W [M]
R112	ERDS2TJ104T	100K 1/4W [M]	R301	ERDS2TJ750T	75 1/4W [M]	R453	ERDS2TJ821T	820 1/4W [M]	R531	ERDS2TJ332T	3.3K 1/4W [M]
R113	ERDS2TJ103T	10K 1/4W [M]	R302	ERDS2TJ750T	75 1/4W [M]	R454	ERDS2TJ821T	820 1/4W [M]	R532	ERDS2TJ332T	3.3K 1/4W [M]
R114	ERDS2TJ562T	5.6K 1/4W [M]	R359	ERDS2TJ750T	75 1/4W [M]	R455	ERDS2TJ563T	56K 1/4W [M]	R533	ERDS2TJ103T	10K 1/4W [M]
R115	ERDS2TJ561T	560 1/4W [M]	R362	ERDS2TJ750T	75 1/4W [M]	R456	ERDS2TJ563T	56K 1/4W [M]	R534	ERDS2TJ103T	10K 1/4W [M]
R116	ERDS2TJ102T	1K 1/4W [M]	R367	ERDS2TJ102T	1K 1/4W [M]	R457	ERDS2TJ271T	270 1/4W [M]	R543	ERDS2TJ102T	1K 1/4W [M]
R117	ERDS2TJ104T	100K 1/4W [M]	R368	ERDS2TJ102T	1K 1/4W [M]	R458	ERDS2TJ271T	270 1/4W [M]	R544	ERDS2TJ102T	1K 1/4W [M]
R118	ERDS2TJ562T	5.6K 1/4W [M]	R369	ERDS2TJ182T	1.8K 1/4W [M]	R459	ERDS2TJ680T	68 1/4W [M]	R545	ERDS2TJ684T	680K 1/4W [M]
R119	ERDS2TJ822T	8.2K 1/4W [M]	R370	ERDS2TJ182T	1.8K 1/4W [M]	R460	ERDS2TJ680T	68 1/4W [M]	R546	ERDS2TJ103T	10K 1/4W [M]
R120	ERDS2TJ473T	47K 1/4W [M]	R371	ERD2FCVG220T	22 1/4W [M]	R461	ERDS2TJ184T	180K 1/4W [M]	R551	ERDS2TJ102T	1K 1/4W [M]
R121	ERDS2TJ332T	3.3K 1/4W [M]	R372	ERD2FCVG220T	22 1/4W [M]	R462	ERDS2TJ184T	180K 1/4W [M]	R552	ERDS2TJ102T	1K 1/4W [M]
R122	ERDS2TJ272T	2.7K 1/4W [M]	R373	ERDS2TJ103T	10K 1/4W [M]	R463	ERDS2TJ123T	12K 1/4W [M]	R553	ERDS2TJ104T	100K 1/4W [M]
R124	ERDS2TJ271T	270 1/4W [M]	R374	ERDS2TJ103T	10K 1/4W [M]	R464	ERDS2TJ123T	12K 1/4W [M]	R554	ERDS2TJ104T	100K 1/4W [M]
R125	ERDS2TJ472T	4.7K 1/4W [M]	R401	ERDS2TJ102T	1K 1/4W [M]	R465	ERDS2TJ563T	56K 1/4W [M]	R555	ERDS2TJ223T	22K 1/4W [M]
R126	ERDS2TJ472T	4.7K 1/4W [M]	R402	ERDS2TJ102T	1K 1/4W [M]	R466	ERDS2TJ563T	56K 1/4W [M]	R556	ERDS2TJ223T	22K 1/4W [M]
R127	ERDS2TJ103T	10K 1/4W [M]	R405	ERDS2TJ102T	1K 1/4W [M]	R467	ERDS2TJ102T	1K 1/4W [M]	R557	ERDS2TJ681T	680 1/4W [M]
R128	ERDS2TJ820T	82 1/4W [M]	R406	ERDS2TJ102T	1K 1/4W [M]	R468	ERDS2TJ102T	1K 1/4W [M]	R558	ERDS2TJ102T	1K 1/4W [M]
R129	ERDS2TJ473T	47K 1/4W [M]	R407	ERDS2TJ102T	1K 1/4W [M]	R501	ERDS2TJ222T	2.2K 1/4W [M]	R561	ERDS2TJ332T	3.3K 1/4W [M]
R130	ERDS2TJ102T	1K 1/4W [M]	R408	ERDS2TJ102T	1K 1/4W [M]	R502	ERDS2TJ222T	2.2K 1/4W [M]	R562	ERDS2TJ332T	3.3K 1/4W [M]
R131	ERDS2TJ102T	1K 1/4W [M]	R409	ERDS2TJ102T	1K 1/4W [M]	R503	ERDS2TJ103T	10K 1/4W [M]	R563	ERDS2TJ104T	100K 1/4W [M]
R132	ERDS2TJ103T	10K 1/4W [M]	R410	ERDS2TJ102T	1K 1/4W [M]	R504	ERDS2TJ103T	10K 1/4W [M]	R564	ERDS2TJ104T	100K 1/4W [M]
R133	ERDS2TJ102T	1K 1/4W [M]	R411	ERDS2TJ102T	1K 1/4W [M]	R505	ERDS2TJ103T	10K 1/4W [M]	R565	ERDS2TJ102T	1K 1/4W [M]
R134	ERDS2TJ102T	1K 1/4W [M]	R412	ERDS2TJ102T	1K 1/4W [M]	R506	ERDS2TJ103T	10K 1/4W [M]	R566	ERDS2TJ102T	1K 1/4W [M]
R135	ERDS2TJ102T	1K 1/4W [M]	R413	ERDS2TJ102T	1K 1/4W [M]	R508	ERDS1FVJ2R2T	2.2 1/2W [M]	R567	ERDS2TJ101T	100 1/4W [M]
R136	ERDS2TJ102T	1K 1/4W [M]	R414	ERDS2TJ102T	1K 1/4W [M]	R511	ERDS2TJ471T	470 1/4W [M]	R568	ERDS2TJ101T	100 1/4W [M]
			R415	ERDS2TJ102T	1K 1/4W [M]	R512	ERDS2TJ471T	470 1/4W [M]	R569	ERDS2TJ332T	3.3K 1/4W [M]
			R416	ERDS2TJ102T	1K 1/4W [M]	R513	ERDS2TJ474T	470K 1/4W [M]	R593	ERDS2TJ471T	470 1/4W [M]

Ref. No.	Part No.	Values & Remarks	Ref. No.	Part No.	Values & Remarks	Ref. No.	Part No.	Values & Remarks	Ref. No.	Part No.	Values & Remarks
R594	ERDS2TJ471T	470 1/4W [M]	R647	ERG1SJ101E	100 1W Δ [M]	R724	ERDS1FVJ100T	10 1/2W Δ [M]	R943	ERDS2TJ102T	1K 1/4W [M]
R595	ERDS2TJ471T	470 1/4W [M]	R648	ERG1SJ101E	100 1W Δ [M]	R725	ERDS2TJ102T	1K 1/4W [M]	R944	ERDS2TJ104T	100K 1/4W [M]
R596	ERDS2TJ471T	470 1/4W [M]	R649	ERD25FVJ151T	150 1/4W [M]	R726	ERDS1FVJ471T	470 1/2W Δ [M]	R945	ERDS2TJ104T	100K 1/4W [M]
R601	ERDS2TJ102T	1K 1/4W [M]	R650	ERD25FVJ151T	150 1/4W [M]	R731	ERD25FVJ100T	10 1/4W [M]	R946	ERDS2TJ103T	10K 1/4W [M]
R602	ERDS2TJ102T	1K 1/4W [M]	R652	ERD25FVJ4R7T	4.7 1/4W [M]	R732	ERDS2TJ153T	15K 1/4W [M]	R947	ERDS2TJ103T	10K 1/4W [M]
R603	ERDS2TJ102T	1K 1/4W [M]	R653	ERDS2TJ682T	6.8K 1/4W [M]	R733	ERDS2TJ123T	12K 1/4W [M]	R948	ERDS2TJ103T	10K 1/4W [M]
R604	ERDS2TJ102T	1K 1/4W [M]	R654	ERDS2TJ682T	6.8K 1/4W [M]	R734	ERDS2TJ103T	10K 1/4W [M]	R949	ERDS2TJ103T	10K 1/4W [M]
R605	ERDS2TJ392T	3.9K 1/4W [M]	R656	ERDS2TJ681T	680 1/4W [M]	R735	ERDS2TJ103T	10K 1/4W [M]	R950	ERDS2TJ102T	1K 1/4W [M]
R606	ERDS2TJ392T	3.9K 1/4W [M]	R657	ERDS2TJ333T	33K 1/4W [M]	R739	ERD25FVJ180T	18 1/4W [M]	R951	ERDS2TJ122T	1.2K 1/4W [M]
R607	ERDS2TJ223T	22K 1/4W [M]	R658	ERDS2TJ333T	33K 1/4W [M]	R740	ERDS2TJ393T	39K 1/4W [M]	R952	ERDS2TJ152T	1.5K 1/4W [M]
R608	ERDS2TJ223T	22K 1/4W [M]	R659	ERDS2TJ183T	18K 1/4W [M]	R742	ERDS2TJ393T	39K 1/4W [M]	R953	ERDS2TJ182T	1.8K 1/4W [M]
R609	ERDS2TJ222T	2.2K 1/4W [M]	R660	ERDS2TJ224T	220K 1/4W [M]	R743	ERDS2TJ183T	18K 1/4W [M]	R954	ERDS2TJ222T	2.2K 1/4W [M]
R610	ERDS2TJ222T	2.2K 1/4W [M]	R661	ERDS2TJ102T	1K 1/4W [M]	R751	ERC12UGK335D	3.3M 1/2W Δ [M]	R955	ERDS2TJ332T	3.3K 1/4W [M]
R611	ERDS2TJ222T	2.2K 1/4W [M]	R662	ERDS2TJ102T	1K 1/4W [M]	R754	ERDS2TJ102T	1K 1/4W [M]	R956	ERDS2TJ472T	4.7K 1/4W [M]
R612	ERDS2TJ222T	2.2K 1/4W [M]	R663	ERDS2TJ102T	1K 1/4W [M]	R771	ERDS2TJ473T	47K 1/4W [M]	R957	ERDS2TJ682T	6.8K 1/4W [M]
R613	ERDS2TJ182T	1.8K 1/4W [M]	R665	ERDS2TJ472T	4.7K 1/4W [M]	R772	ERDS2TJ473T	47K 1/4W [M]	R960	ERDS2TJ102T	1K 1/4W [M]
R614	ERDS2TJ182T	1.8K 1/4W [M]	R666	ERDS2TJ472T	4.7K 1/4W [M]	R773	ERDS2TJ103T	10K 1/4W [M]	R961	ERDS2TJ122T	1.2K 1/4W [M]
R615	ERDS2TJ182T	1.8K 1/4W [M]	R681	ERDS2TJ270T	27 1/4W [M]	R774	ERDS2TJ335T	3.3M 1/4W [M]	R962	ERDS2TJ152T	1.5K 1/4W [M]
R616	ERDS2TJ182T	1.8K 1/4W [M]	R682	ERDS2TJ270T	27 1/4W [M]	R775	ERDS2TJ331T	330 1/4W [M]	R963	ERDS2TJ182T	1.8K 1/4W [M]
R617	ERDS2TJ563T	56K 1/4W [M]	R683	ERDS2TJ270T	27 1/4W [M]	R776	ERD25FVJ4R7T	4.7 1/4W [M]	R964	ERDS2TJ222T	2.2K 1/4W [M]
R618	ERDS2TJ563T	56K 1/4W [M]	R684	ERDS2TJ270T	27 1/4W [M]	R777	ERDS2TJ473T	47K 1/4W [M]	R970	ERDS2TJ102T	1K 1/4W [M]
R619	ERDS2TJ563T	56K 1/4W [M]	R685	ERDS2TJ270T	27 1/4W [M]	R778	ERDS2TJ472T	4.7K 1/4W [M]	R971	ERDS2TJ122T	1.2K 1/4W [M]
R620	ERDS2TJ563T	56K 1/4W [M]	R686	ERDS2TJ270T	27 1/4W [M]	R779	ERDS2TJ103T	10K 1/4W [M]	R972	ERDS2TJ152T	1.5K 1/4W [M]
R621	ERDS2TJ470T	47 1/4W [M]	R687	ERDS2TJ270T	27 1/4W [M]	R782	ERDS2TJ470T	47 1/4W [M]	R973	ERDS2TJ182T	1.8K 1/4W [M]
R622	ERDS2TJ470T	47 1/4W [M]	R688	ERDS2TJ270T	27 1/4W [M]	R783	ERDS2TJ103T	10K 1/4W [M]	R974	ERDS2TJ222T	2.2K 1/4W [M]
R623	ERDS2TJ470T	47 1/4W [M]	R689	ERDS2TJ270T	27 1/4W [M]	R784	ERDS2TJ154T	150K 1/4W [M]	R1001	ERDS2TJ223T	22K 1/4W [M]
R624	ERDS2TJ470T	47 1/4W [M]	R690	ERDS2TJ270T	27 1/4W [M]	R785	ERDS2TJ103T	10K 1/4W [M]	R1002	ERDS2TJ223T	22K 1/4W [M]
R625	ERDS1FVJ100T	10 1/2W Δ [M]	R691	ERDS2TJ270T	27 1/4W [M]	R786	ERDS2TJ104T	100K 1/4W [M]	R1003	ERDS2TJ102T	1K 1/4W [M]
R626	ERDS1FVJ100T	10 1/2W Δ [M]	R692	ERDS2TJ270T	27 1/4W [M]	R787	ERDS2TJ223T	22K 1/4W [M]	R1004	ERDS2TJ102T	1K 1/4W [M]
R627	ERDS1FVJ100T	10 1/2W Δ [M]	R693	ERDS2TJ270T	27 1/4W [M]	R788	ERDS2TJ223T	22K 1/4W [M]	R1005	ERDS2TJ203T	20K 1/4W [M]
R628	ERDS1FVJ100T	10 1/2W Δ [M]	R694	ERDS2TJ270T	27 1/4W [M]	R789	ERDS2TJ223T	22K 1/4W [M]	R1007	ERDS2TJ473T	47K 1/4W [M]
R629	ERDS2TJ104T	100K 1/4W [M]	R695	ERDS2TJ102T	1K 1/4W [M]	R790	ERDS2TJ223T	22K 1/4W [M]	R1008	ERDS2TJ473T	47K 1/4W [M]
R630	ERDS2TJ124T	120K 1/4W [M]	R696	ERDS2TJ102T	1K 1/4W [M]	R793	ERDS2TJ682T	6.8K 1/4W [M]	R1009	ERDS2TJ332T	3.3K 1/4W [M]
R631	ERDS2TJ154T	150K 1/4W [M]	R699	ERDS2TJ332T	3.3K 1/4W [M]	R794	ERDS2TJ682T	6.8K 1/4W [M]	R1010	ERDS2TJ332T	3.3K 1/4W [M]
R632	ERDS2TJ184T	180K 1/4W [M]	R703	ERDS1FVJ3R9T	3.9 1/2W Δ [M]	R901	ERDS2TJ102T	1K 1/4W [M]	R1011	ERDS2TJ332T	3.3K 1/4W [M]
R633	ERDS2TJ473T	47K 1/4W [M]	R704	ERDS1FVJ3R9T	3.9 1/2W Δ [M]	R906	ERDS2TJ182T	1.8K 1/4W [M]	R1012	ERDS2TJ102T	1K 1/4W [M]
R634	ERDS2TJ684T	680K 1/4W [M]	R705	ERDS2TJ472T	4.7K 1/4W [M]	R907	ERDS2TJ104T	100K 1/4W [M]	R1051	ERDS2TJ393T	39K 1/4W [M]
R635	ERDS2TJ154T	150K 1/4W [M]	R706	ERDS2TJ102T	1K 1/4W [M]	R908	ERDS2TJ104T	100K 1/4W [M]	R1052	ERDS2TJ105T	1M 1/4W [M]
R636	ERDS2TJ684T	680K 1/4W [M]	R707	ERD25FVJ221T	220 1/4W [M]	R909	ERDS2TJ104T	100K 1/4W [M]	R1053	ERDS2TJ102T	1K 1/4W [M]
R637	ERDS2TJ104T	100K 1/4W [M]	R708	ERDS2TJ152T	1.5K 1/4W [M]	R910	ERDS2TJ102T	1K 1/4W [M]	R1055	ERDS2TJ473T	47K 1/4W [M]
R638	ERDS2TJ563T	56K 1/4W [M]	R709	ERDS2TJ1R5T	1.5 1/4W [M]	R911	ERDS2TJ104T	100K 1/4W [M]	R1056	ERDS2TJ473T	47K 1/4W [M]
R639	ERDS2TJ333T	33K 1/4W [M]	R710	ERDS2TJ1R5T	1.5 1/4W [M]	R917	ERDS2TJ103T	10K 1/4W [M]	R1061	ERDS2TJ222T	2.2K 1/4W [M]
R640	ERDS2TJ473T	47K 1/4W [M]	R711	ERDS2TJ752T	7.5K 1/4W [M]	R920	ERDS2TJ271T	270 1/4W [M]			
R641	ERDS2TJ221T	220 1/4W [M]	R712	ERDS2TJ682T	6.8K 1/4W [M]	R921	ERDS2TJ121T	120 1/4W [M]			
R642	ERDS2TJ221T	220 1/4W [M]	R713	ERDS2TJ390T	39 1/4W [M]	R922	ERDS2TJ472T	4.7K 1/4W [M]			CAPACITORS
R643	ERDS2TJ221T	220 1/4W [M]	R714	ERDS2TJ390T	39 1/4W [M]	R929	ERDS2TJ101T	100 1/4W [M]			
R644	ERDS2TJ221T	220 1/4W [M]	R721	ERDS1FVJ471T	470 1/2W Δ [M]	R930	ERDS2TJ101T	100 1/4W [M]	C1	ECBT1H5R6KC5	5.6P 50V [M]
R645	ERG1SJ101E	100 1W Δ [M]	R722	ERDS2TJ392T	3.9K 1/4W [M]	R936	ERDS2TJ103T	10K 1/4W [M]	C2	RCBS1H102KBY	1000P 50V [M]
R646	ERG1SJ101E	100 1W Δ [M]	R723	ERDS1FVJ100T	10 1/2W Δ [M]	R937	ERDS2TJ103T	10K 1/4W [M]	C3	ECBT1H2R2KC5	2.2P 50V [M]
									C4	ECBT1H181KB5	180P 50V [M]

Ref. No.	Part No.	Values & Remarks	Ref. No.	Part No.	Values & Remarks	Ref. No.	Part No.	Values & Remarks	Ref. No.	Part No.	Values & Remarks
C5	ECBT1H5R6KC5	5.6P 50V [M]	C148	ECBT1C103NS5	0.01 16V [M]	C455	ECBT1H102KB5	1000P 50V [M]	C559	ECEA1CKA100B	10 16V [M]
C6	ECBT1H3R3KC5	3.3P 50V [M]	C149	ECBT1C103NS5	0.01 16V [M]	C456	ECBT1H102KB5	1000P 50V [M]	C560	ECEA1CKA100B	10 16V [M]
C7	ECBT1H4R7KC5	4.7P 50V [M]	C150	ECBT1H104ZF5	0.1 50V [M]	C457	ECA1CM330B	33 16V [M]	C561	ECA1HM3R3B	3.3 50V [M]
C8	ECBT1H3R3KC5	3.3P 50V [M]	C172	ECBT1H331KB5	330P 50V [M]	C458	ECA1CM330B	33 16V [M]	C562	ECA1HM3R3B	3.3 50V [M]
C9	ECBT1H2R2KC5	2.2P 50V [M]	C173	ECEA1CKA220B	22 16V [M]	C459	ECFR1E223KR	0.022 25V [M]	C563	ECBT1H104ZF5	0.1 50V [M]
C10	ECBT1H180JC5	18P 50V [M]	C174	ECEA1CKA100B	10 16V [M]	C460	ECFR1E223KR	0.022 25V [M]	C585	ECBT1H101KB5	100P 50V [M]
C11	RCBS1H102KBY	1000P 50V [M]	C175	ECBT1C103NS5	0.01 16V [M]	C461	ECBT1C682KR5	6800P 16V [M]	C586	ECBT1H101KB5	100P 50V [M]
C101	ECBT1C103NS5	0.01 16V [M]	C196	ECBT1H102KB5	1000P 50V [M]	C462	ECBT1C682KR5	6800P 16V [M]	C587	ECBT1H101KB5	100P 50V [M]
C103	ECBT1C103NS5	0.01 16V [M]	C330	ECBT1H470J5	47P 50V [M]	C463	ECEA1VKA4R7B	4.7 35V [M]	C588	ECBT1H101KB5	100P 50V [M]
C104	ECBT1H102KB5	1000P 50V [M]	C331	ECBT1H470J5	47P 50V [M]	C464	ECEA1VKA4R7B	4.7 35V [M]	C601	ECEA1CKA220B	22 16V [M]
C105	ECBT1H102KB5	1000P 50V [M]	C351	ECEA1CU101B	100 16V [M]	C465	ECBT1E103ZF5	0.01 25V [M]	C602	ECEA1CKA220B	22 16V [M]
C106	ECBT1C103NS5	0.01 16V [M]	C352	ECEA1CU101B	100 16V [M]	C466	ECBT1E103ZF5	0.01 25V [M]	C603	ECEA1VKA4R7B	4.7 35V [M]
C107	ECBT1H473ZF5	0.047 50V [M]	C354	ECBT1E103ZF5	0.01 25V [M]	C503	ECEA0JKA101B	100 6.3V [M]	C604	ECEA1VKA4R7B	4.7 35V [M]
C108	ECBT1H8R2KC5	8.2P 50V [M]	C355	ECBT1E103ZF5	0.01 25V [M]	C504	ECEA0JKA101B	100 6.3V [M]	C605	ECA1JM330B	33 6.3V [M]
C109	ECBT1C103NS5	0.01 16V [M]	C357	ECBT1E103ZF5	0.01 25V [M]	C505	ECFR1C104MR	0.1 16V [M]	C606	ECA1JM330B	33 6.3V [M]
C110	ECBT1C103NS5	0.01 16V [M]	C358	ECBT1E103ZF5	0.01 25V [M]	C506	ECFR1C104MR	0.1 16V [M]	C607	ECA1JM330B	33 6.3V [M]
C111	ECEA1EKA4R7B	4.7 25V [M]	C373	ECA1EM470B	47 25V [M]	C511	ECEA1HKA3R3B	3.3 50V [M]	C608	ECA1JM330B	33 6.3V [M]
C112	ECBT1C103NS5	0.01 16V [M]	C374	ECA1EM470B	47 25V [M]	C512	ECEA1HKA3R3B	3.3 50V [M]	C609	ECCR1H120KC5	12P 50V [M]
C113	ECBT1H102KB5	1000P 50V [M]	C401	ECEA1VKA4R7B	4.7 35V [M]	C513	ECBT1H150J5	15P 50V [M]	C610	ECCR1H120KC5	12P 50V [M]
C114	ECEA1HKA3R3B	3.3 50V [M]	C402	ECEA1VKA4R7B	4.7 35V [M]	C514	ECBT1H150J5	15P 50V [M]	C611	ECCR1H120KC5	12P 50V [M]
C115	ECEA1EKA4R7B	4.7 25V [M]	C403	ECBT1E103ZF5	0.01 25V [M]	C515	ECBT1H221KB5	220P 50V [M]	C612	ECCR1H120KC5	12P 50V [M]
C116	ECBT1C822MS5	8200P 16V [M]	C404	ECBT1E103ZF5	0.01 25V [M]	C516	ECBT1H221KB5	220P 50V [M]	C613	ECBT1H821KB5	820P 50V [M]
C117	ECQB1H821JM3	820P 50V [M]	C405	ECBT1H101KB5	100P 50V [M]	C517	ECBT1H330J5	33P 50V [M]	C614	ECBT1H821KB5	820P 50V [M]
C118	ECFR1E183KR	0.018 25V [M]	C406	ECBT1H101KB5	100P 50V [M]	C518	ECBT1H330J5	33P 50V [M]	C615	ECBT1H821KB5	820P 50V [M]
C119	ECFR1E183KR	0.018 25V [M]	C409	ECEA1CKA220B	22 16V [M]	C519	ECEA1VKA4R7B	4.7 35V [M]	C616	ECBT1H821KB5	820P 50V [M]
C120	ECEA1HKA010B	1 50V [M]	C410	ECEA1CKA220B	22 16V [M]	C520	ECEA1VKA4R7B	4.7 35V [M]	C617	ECQV1H473JZ3	0.047 50V [M]
C121	ECEA1HKA010B	1 50V [M]	C411	ECBT1H101KB5	100P 50V [M]	C521	ECEA1VKA4R7B	4.7 35V [M]	C618	ECQV1H473JZ3	0.047 50V [M]
C122	ECEA1HKA2R2B	2.2 50V [M]	C412	ECBT1H101KB5	100P 50V [M]	C522	ECEA1VKA4R7B	4.7 35V [M]	C619	ECQV1H473JZ3	0.047 50V [M]
C123	ECEA1HKA010B	1 50V [M]	C415	ECBT1E103ZF5	0.01 25V [M]	C523	ECFR1E123KR	0.012 25V [M]	C620	ECQV1H473JZ3	0.047 50V [M]
C124	ECBT1H102KB5	1000P 50V [M]	C416	ECBT1E103ZF5	0.01 25V [M]	C524	ECFR1E123KR	0.012 25V [M]	C621	ECEA2AU100B	10 100V [M]
C125	ECBT1H150JC5	15P 50V [M]	C417	ECBT1H101KB5	100P 50V [M]	C525	ECQV1H683JM3	0.068 50V [M]	C622	ECEA1HN010SB	1 50V [M]
C126	ECBT1H104ZF5	0.1 50V [M]	C418	ECBT1H101KB5	100P 50V [M]	C526	ECQV1H683JM3	0.068 50V [M]	C623	ECA1HM470B	47 50V [M]
C127	ECEA1CKA220B	22 16V [M]	C419	ECBT1H101KB5	100P 50V [M]	C527	ECBT1C562KR5	5600P 16V [M]	C624	ECEA2AN2R2SB	2.2 100V [M]
C128	ECBT1C103NS5	0.01 16V [M]	C420	ECBT1H101KB5	100P 50V [M]	C528	ECBT1C562KR5	5600P 16V [M]	C625	ECEA1HN100SB	10 50V [M]
C129	ECEA0JKA101B	100 6.3V [M]	C421	ECBT1H101KB5	100P 50V [M]	C529	ECQB1H273JM3	0.027 50V [M]	C626	ECEA1HN100SB	10 50V [M]
C130	ECEA0JKA101B	100 6.3V [M]	C422	ECBT1H101KB5	100P 50V [M]	C530	ECQB1H273JM3	0.027 50V [M]	C635	ECEA1VKA4R7B	4.7 35V [M]
C131	ECBT1C103NS5	0.01 16V [M]	C423	ECBT1H101KB5	100P 50V [M]	C531	ECBT1E103ZF5	0.01 25V [M]	C636	ECEA1HN010SB	1 50V [M]
C132	ECBT1H102KB5	1000P 50V [M]	C424	ECBT1H101KB5	100P 50V [M]	C532	ECBT1E103ZF5	0.01 25V [M]	C685	ECBT1E103ZF5	0.01 25V [M]
C133	ECBT1H150JC5	15P 50V [M]	C425	ECBT1H101KB5	100P 50V [M]	C533	ECEA1CKA220B	22 16V [M]	C701	ECBT1E103ZF5	0.01 25V [M]
C134	ECBT1H180JC5	18P 50V [M]	C426	ECBT1H101KB5	100P 50V [M]	C534	ECEA1CKA220B	22 16V [M]	C702	ECQE2104KF3	0.1 250V [M]
C137	ECBT1H271KB5	270P 50V [M]	C427	ECBT1H101KB5	100P 50V [M]	C536	ECBT1E103ZF5	0.01 25V [M]	C703	EC0S1JP682CB	6800P 63V [M]
C138	ECBT1H271KB5	270P 50V [M]	C428	ECBT1H101KB5	100P 50V [M]	C551	ECEA1HKA3R3B	3.3 50V [M]	C704	EC0S1JP682CB	6800P 63V [M]
C141	ECEA1HKA010B	1 50V [M]	C431	ECEA1CKA100B	10 16V [M]	C552	ECEA1HKA3R3B	3.3 50V [M]	C705	EC0S1VP562BB	5600P 35V [M]
C142	ECEA1HKA010B	1 50V [M]	C432	ECEA1CKA100B	10 16V [M]	C553	ECBT1H101KB5	100P 50V [M]	C706	EC0S1VP562BB	5600P 35V [M]
C143	ECEA1HKA010B	1 50V [M]	C440	ECBT1E103ZF5	0.01 25V [M]	C554	ECBT1H101KB5	100P 50V [M]	C707	ECA1VM101B	100 35V [M]
C144	ECEA1HKA010B	1 50V [M]	C451	ECEA1VKA4R7B	4.7 35V [M]	C555	ECBT1H221KB5	220P 50V [M]	C708	ECKR1H103ZF5	0.01 50V [M]
C145	ECBT1H220JC5	22P 50V [M]	C452	ECEA1VKA4R7B	4.7 35V [M]	C556	ECBT1H221KB5	220P 50V [M]	C709	ECA1CM330B	33 16V [M]
C146	ECBT1H331KB5	330P 50V [M]	C453	ECBT1H101KB5	100P 50V [M]	C557	ECBT1E103ZF5	0.01 25V [M]	C710	ECBT1E103ZF5	0.01 25V [M]
C147	ECBT1H102KB5	1000P 50V [M]	C454	ECBT1H101KB5	100P 50V [M]	C558	ECBT1E103ZF5	0.01 25V [M]	C711	ECKR1H103ZF5	0.01 50V [M]

Ref. No.	Part No.	Values & Remarks	Ref. No.	Part No.	Values & Remarks	Ref. No.	Part No.	Values & Remarks	Ref. No.	Part No.	Values & Remarks
C712	ECA1HM100B	10 50V [M]	C1011	ECEA1CKA100B	10 16V [M]						
C713	ECKR1H103ZF5	0.01 50V [M]	C1012	ECEA1CKA100B	10 16V [M]						
C714	ECA1EM470B	47 25V [M]	C1013	ECEA1CKA100B	10 16V [M]						
C715	ECEA1CU101B	100 16V [M]	C1014	ECEA0JU221B	220 6.3V [M]						
C721	ECQE2104KF3	0.1 250V [M]	C1015	ECQV1H104JM3	0.1 50V [M]						
C731	ECKR1H103ZF5	0.01 50V [M]	C1016	ECQV1H104JM3	0.1 50V [M]						
C732	ECKR1H103ZF5	0.01 50V [M]	C1017	ECA1HMR47B	0.47 50V [M]						
C751	ECKWNS102MBM	1000P 400V [M]	C1018	ECEA1VKA4R7B	4.7 35V [M]						
C752	ECKR1H103ZF5	0.01 50V [M]	C1019	ECA1HMR47B	0.47 50V [M]						
C753	ECA1EM102E	1000 25V [M]	C1020	ECEA1VKA4R7B	4.7 35V [M]						
C754	ECBT1E103ZF5	0.01 25V [M]	C1021	ECEA1HKAR15B	0.15 50V [M]						
C755	ECA1CM470B	47 16V [M]	C1022	ECA1HM3R3B	3.3 50V [M]						
C757	ECA1CM100B	10 16V [M]	C1023	ECQV1H154JZ3	0.15 50V [M]						
C771	ECEA1VKA4R7B	4.7 35V [M]	C1024	ECQV1H154JZ3	0.15 50V [M]						
C772	ECEA1VKA4R7B	4.7 35V [M]	C1025	ECA1HM3R3B	3.3 50V [M]						
C773	ECBT1E223ZF5	0.022 25V [M]	C1026	ECEA1HKAR15B	0.15 50V [M]						
C774	ECEA0JKA101B	100 6.3V [M]	C1027	ECEA1VKA4R7B	4.7 35V [M]						
C775	ECBT1E223ZF5	0.022 25V [M]	C1028	ECA1HMR47B	0.47 50V [M]						
C776	ECA1CM471B	470 16V [M]	C1029	ECEA1VKA4R7B	4.7 35V [M]						
C901	ECA0JM102B	02 6.3V [M]	C1030	ECA1HMR47B	0.47 50V [M]						
C902	ECBT1E223ZF5	0.022 25V [M]	C1031	ECQV1H104JM3	0.1 50V [M]						
C903	ECBT1E103ZF5	0.01 25V [M]	C1032	ECQV1H104JM3	0.1 50V [M]						
C904	ECA0JM102B	02 6.3V [M]	C1033	ECA1EM470B	47 25V [M]						
C906	ECEA0JKA101B	100 6.3V [M]	C1034	ECQV1H474JM3	0.47 50V [M]						
C908	ECBT1E103ZF5	0.01 25V [M]	C1035	ECBT1H681KB5	680P 50V [M]						
C909	ECEA1HKA220B	22 50V [M]	C1036	ECBT1H101KB5	100P 50V [M]						
C910	ECEA1HKA220B	22 50V [M]	C1037	ECBT1H101KB5	100P 50V [M]						
C911	ECEA1HKA220B	22 50V [M]	C1038	ECBT1H101KB5	100P 50V [M]						
C912	ECEA1HKA220B	22 50V [M]	C1039	ECEA1CU101B	100 16V [M]						
C913	ECEA1VKA100B	10 35V [M]	C1040	ECEA1CKA100B	10 16V [M]						
C914	ECEA1VKA100B	10 35V [M]	C1041	ECBT1E103ZF5	0.01 25V [M]						
C916	ECEA1HKA010B	1 50V [M]	C1051	ECA1HM2R2B	2.2 50V [M]						
C919	ECBT1E103ZF5	0.01 25V [M]	C1052	ECA1HMR33B	0.33 50V [M]						
C920	ECEA1HKA010B	1 50V [M]	C1053	ECA1HM3R3B	3.3 50V [M]						
C935	ECBT1H101KB5	100P 50V [M]	C1054	ECEA0JU221B	220 6.3V [M]						
C939	ECBT1H101KB5	100P 50V [M]	C1055	ECA1HMR47B	0.47 50V [M]						
C952	ECBT1H101KB5	100P 50V [M]	C1056	ECQV1H823JZ3	0.082 50V [M]						
C953	ECBT1H101KB5	100P 50V [M]	C1057	ECBT1C332KR5	CERAMIC CAP. [M]						
C955	ECBT1H101KB5	100P 50V [M]	C1058	ECQV1H823JZ3	0.082 50V [M]						
C956	ECBT1H101KB5	100P 50V [M]	C1059	ECEA1CU101B	100 16V [M]						
C1001	ECA1HM010B	1 50V [M]	C1060	ECBT1E223ZF5	0.022 25V [M]						
C1002	ECA1HM010B	1 50V [M]	C1062	ECBT1E223ZF5	0.022 25V [M]						
C1003	ECA1HM3R3B	3.3 50V [M]	C1063	ECEA1CU101B	100 16V [M]						
C1004	ECA1HM3R3B	3.3 50V [M]	C1065	ECBT1H681KB5	680P 50V [M]						
C1005	ECA1HM010B	1 50V [M]	C1067	ECBT1C152KR5	1500P 16V [M]						
C1007	ECFR1E223KR	0.022 25V [M]	C1068	ECBT1C152KR5	1500P 16V [M]						
C1008	ECFR1E473KR	0.047 25V [M]									
C1009	ECEA0JU221B	220 6.3V [M]									
C1010	ECEA1CKA100B	10 16V [M]									