

Service Manual

Speaker System SB-HD50A

Hi-Fi Speaker System

Colour

(M) ... Brown Type



■ SPECIFICATIONS

Type	2-way 2-speaker system
Speakers	Woofer: 12 cm cone type Tweeter: 6 cm cone type
Impedance	6 Ω
Input Power	60W, (Music) 30W (DIN)
Output Sound Pressure Level	85 dB/W (1,0 m)
Crossover Frequency	2,5 kHz
Frequency Range	45 Hz \approx 30 kHz (-16 dB) 55 Hz \approx 26 kHz (-10 dB)
Dimensions (W x H x D)	190 x 297 x 216 mm
Weight	3,6 kg

Note:

Design and specifications are subject to change without notice.

■ ESPECIFICACIONES

Tipo	Sistema de 2 vías con 2 altavoces
Altavoces	Graves: tipo cónico de 12 cm Agudos: tipo cónico de 6 cm
Impedancia	6 Ω
Capacidad de potencia	60W (Musicales) 30W (DIN)
Nivel de presión acústica de salida	85 dB/W (1,0 m)
Frecuencia de cruce	2,5 kHz
Respuesta de frecuencias	40 Hz \approx 30 kHz (-16 dB) 55 Hz \approx 26 kHz (-10 dB)
Dimensiones (W x H x D)	190 x 297 x 216 mm
Peso	3,6 kg

Nota:

Estas especificaciones están sujetas a cualquier cambio sin previo aviso.

■ SPECIFICATIONS

Type	2-voies 2-haut-parleurs
Haut-parleurs	Graves: 12 cm type a cone Aigus: 6 cm type cone
Impédance	6 Ω
Entrée maximale	60W, (Musique) 30W (DIN)
Niveau de pression sonore de sortie	85 dB/W (1,0 m)
Fréquence de conmutation	2,5 kHz
Gamme de fréquences	45 Hz \approx 30 kHz (-16 dB) 55 Hz \approx 26 kHz (-10 dB)
Dimensions (W x H x D)	190 x 297 x 216 mm
Poids	3,6 kg

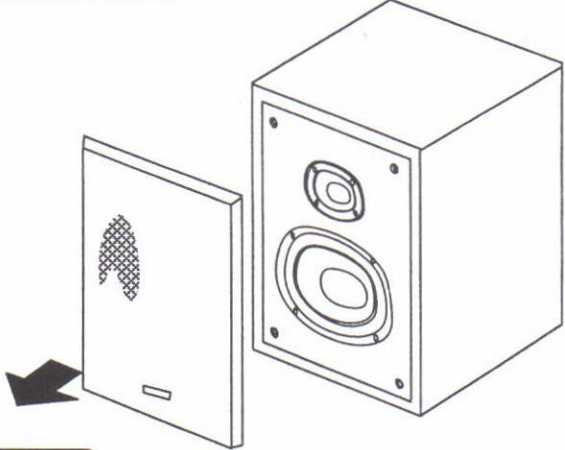
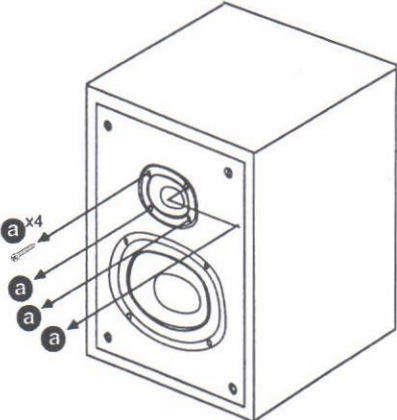
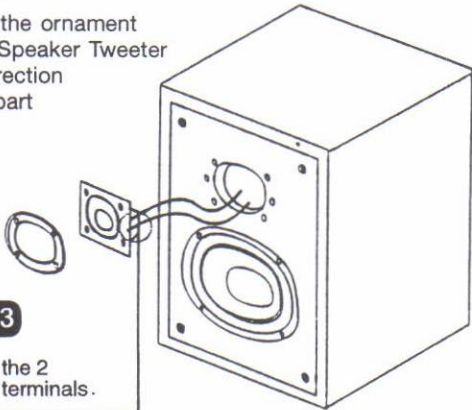
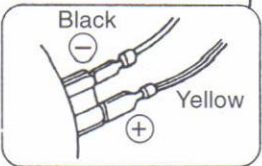
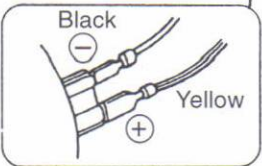

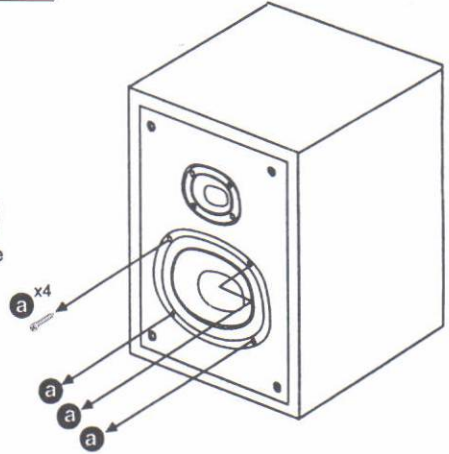
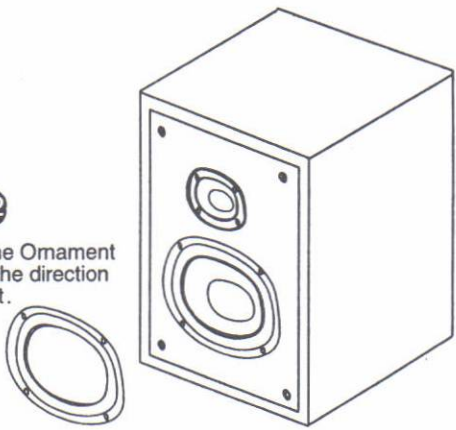
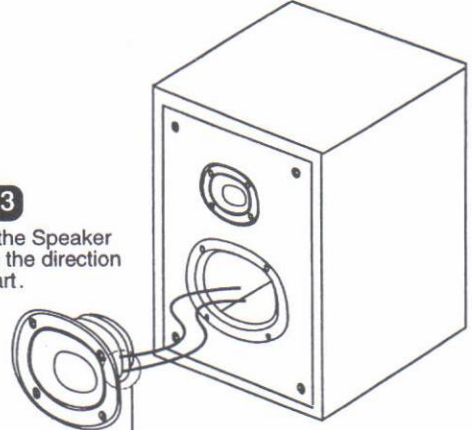
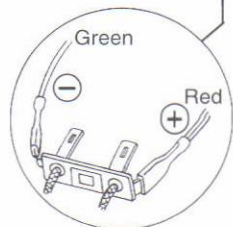
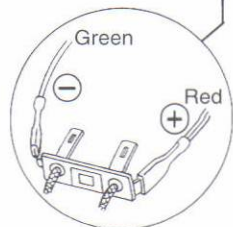

Note:

Subject à changement sans preavis.

⚠ WARNING

This service information is designed for experienced repair technicians only and is not designed for use by the general public. It does not contain warnings or cautions to advise non technical individuals of potential dangers in attempting to service product. Products powered by electricity should be serviced or repaired only by experienced professional technicians. Any attempt to service or repair the product or products dealt with in this service information by anyone else could result in serious injury or death.

DISASSEMBLY INSTRUCTIONS

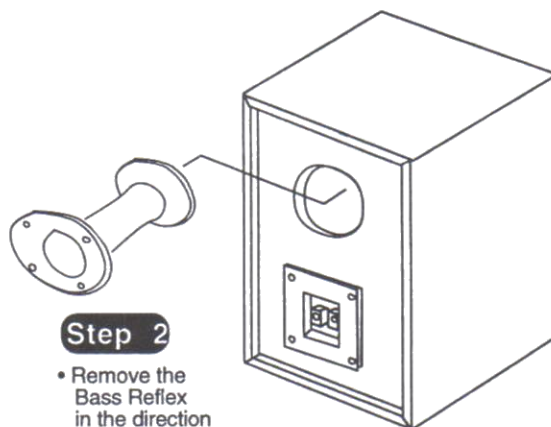
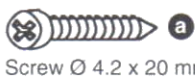
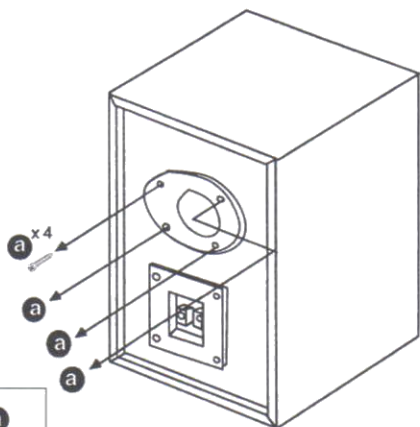
<p>Ref. No. 1</p> <p>Removal of the Speaker Net</p> <p>Procededure 1</p>  <p>Step 1</p> <ul style="list-style-type: none"> Remove the Speaker Net in the direction of arrow. 	<p>Ref. No. 2</p> <p>Removal of the Speaker Tweeter</p> <p>Procededure 1 → 2</p>  <p>Step 1</p> <ul style="list-style-type: none"> Remove the 4 screws.  <p>Step 2</p> <ul style="list-style-type: none"> Remove the ornament and the Speaker Tweeter in the direction of front part  <p>Step 3</p> <ul style="list-style-type: none"> Remove the 2 Speaker terminals.   <p>Screw Ø 4,2 x 20 mm</p>	<p>Ref. No. 3</p> <p>Removal of the Speaker Woofer</p> <p>Procededure 1 → 3</p>  <p>Step 1</p> <ul style="list-style-type: none"> Remove the 4 screws.  <p>Step 2</p> <ul style="list-style-type: none"> Remove the Ornament Woofer in the direction of front part.  <p>Step 3</p> <ul style="list-style-type: none"> Remove the Speaker Woofer in the direction of front part.  <p>Step 4</p> <ul style="list-style-type: none"> Remove the 2 Speaker terminals.   <p>Screw Ø 4,2 x 20 mm</p>
---	---	--

Ref. No. 4 **Removal of the Bass Reflex**

Procededure 4

Step 1

- Remove the 4 screws.



Step 2

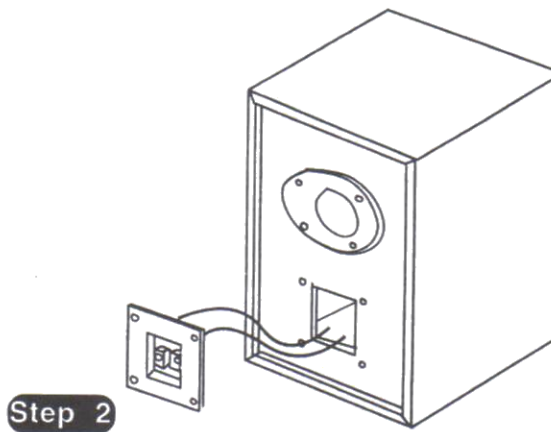
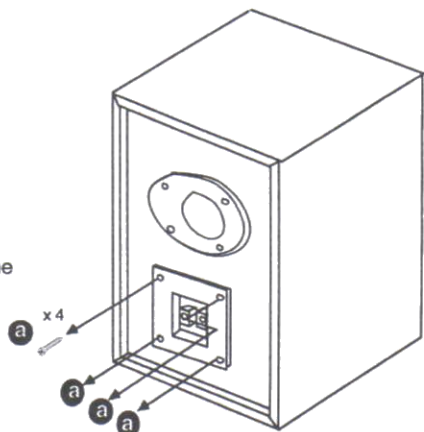
- Remove the Bass Reflex in the direction of front part.

Ref. No. 5 **Removal of the Terminal Block**

Procededure 5

Step 1

- Remove the 4 screws.



Step 2

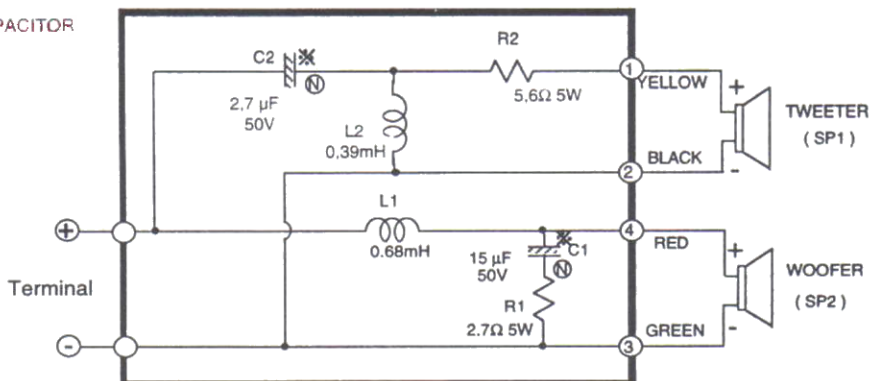
- Remove the Terminal Block in the direction of front part

SCHEMATIC DIAGRAM

(This schematic diagram may be modified at any time with development of new technology.)

(Este esquema puede ser modificado en cualquier momento con el desarrollo de nuevas tecnologías.)

⊗ (N) NON POLAR CAPACITOR



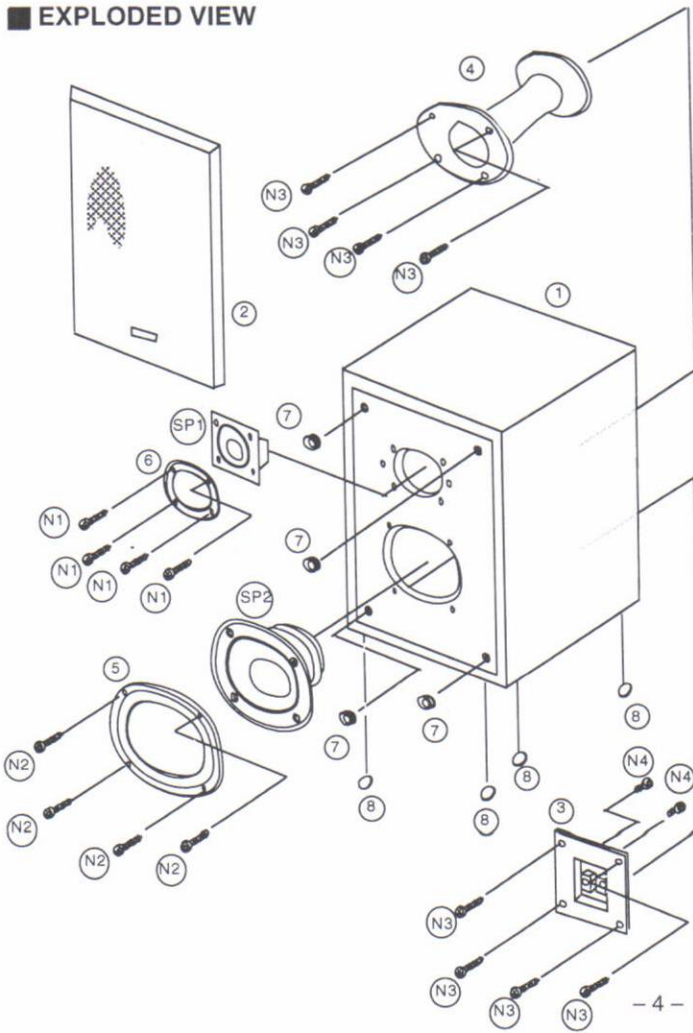
REPLACEMENT PARTS LIST

- Notes : 1. Part numbers are indicated on most mechanical parts. Please use this part number for parts orders.
 2. PAES indicates parts that are supplied by PAES.
 3. A D indicates parts that are supplied by AD. M.E.I.
 Notas : 1. El código está indicado en la mayoría de las piezas. Por favor, use este código para sus pedidos.
 2. La indicación PAES significa recambios suministrados a través de PAES.
 3. La indicación A D significa recambios suministrados a través de AD. M.E.I.

Ref. No.	Part No.	Part Name & Description	Remarks
SPEAKER (S)			
SP1	EAST6PH01B6	SPEAKER (TWEETER)	PAES
SP2	EAS12PL339A6	SPEAKER (WOOFER)	PAES
COIL (S)			
L1	SLCP681J	CHOQUE COIL 0,68 mH	PAES
L2	SLCP391J	CHOQUE COIL 0,27 mH	PAES
CAPACITOR (S)			
C1	ECEA50Y15KE	NON-POLAR CAPACITOR 15µF 50V	PAES
C2	ECEA50Y2R7KE	NON-POLAR CAPACITOR 2,7µF 50V	PAES
RESISTOR (S)			
R1	ERF5ZXK2R7	RESISTOR 2,7Ω 5W	A D
R2	ERF5ZXK5R6	RESISTOR 5,6Ω 5W	A D

Ref. No.	Part No.	Part Name & Description	Remarks
CABINET PARTS			
1	SYMPHD50A	CABINET ASS'Y	PAES
2	SYBPHD50A	NET FRAME	PAES
3	SWEPHD50A	TERMINAL ASS'Y	PAES
4	SGES8G187-1	BASS REFLEX	PAES
5	RGKP0848-K	ORNAMENT WOOFER	PAES
6	RFK0919-K	ORNAMENT TWEETER	PAES
7	SHG8G9044	NET HOLDER	PAES
8	RKA8G0066-K	LEG	PAES
SCREW (S)			
N1	XTNP42+20FG	SCREW SPEAKER TWEETER	PAES
N2	XTN42+20FG	SCREW SPEAKER WOOFER	PAES
N3	XTN42+20FG	SCREW BASS REFLEX/T. BLOCK	PAES
N4	XTBS42BZ+8	SCREW P.C.B.	PAES
PACKING PARTS			
P1	SPGPHD50AM	CARTON BOX	PAES
P2	SPS8GBCH700	PAD	PAES
P3	SPH8G415	SHEET	PAES

EXPLODED VIEW



PACKAGING

