

Notes

- Signal line      ⇨ : Source signal
- ( ) indicates pin No. Right channel.

A

B

C

D

E

F

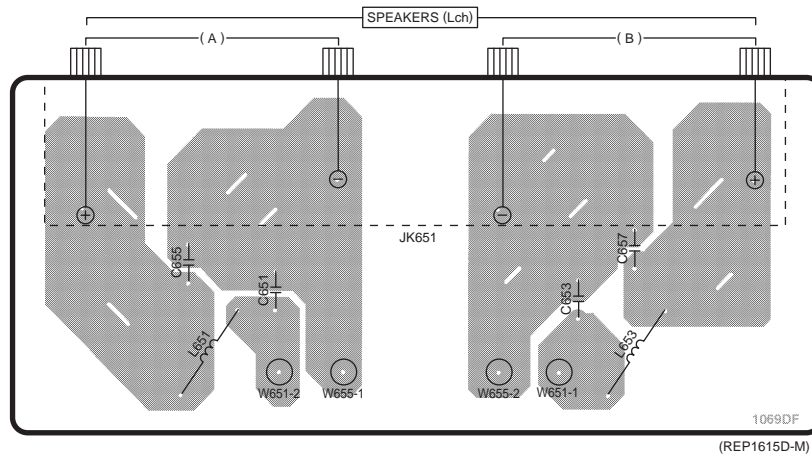
1

## O SPEAKER TERMINAL(L) P.C.B.



2

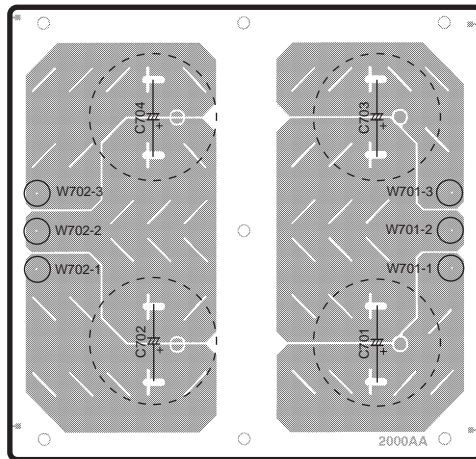
3



4

5

## M CAPACITOR P.C.B.



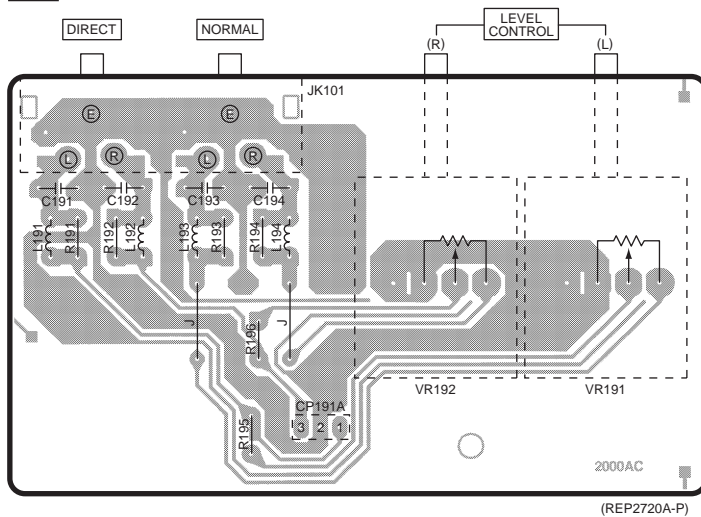
6

## A INPUT TERMINAL P.C.B.



7

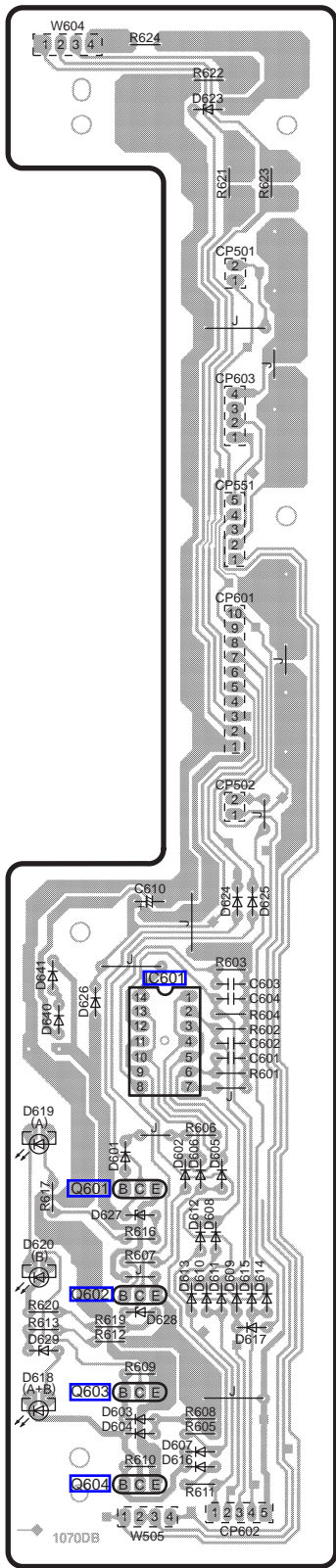
8



### ELECTRICAL PARTS LOCATION

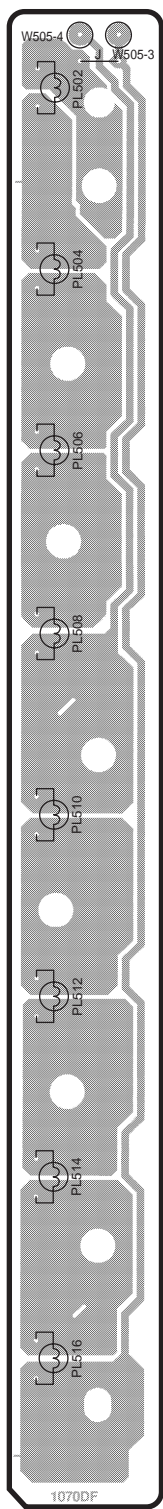
Ref. No.	Lo. No.	Ref. No.	Lo. No.
<b>O</b> SPEAKER TERMINAL(L) P.C.B.			
L651	3B	JK651	2C
L653	3D	C651	2C
W651-1	3D	C653	2D
W651-2	3C	C655	2B
W655-1	3C	C657	2D
W655-2	3D		
<b>M</b> CAPACITOR P.C.B.			
W701-1	5D	W702-3	5B
W701-2	5D	C701	5C
W701-3	5D	C702	5B
W702-1	5B	C703	4C
W702-2	5B	C704	4B
<b>A</b> INPUT TERMINAL P.C.B.			
VR191	8D	R192	7A
VR192	8C	R193	7B
L191	7A	R194	7B
L192	7B	R195	8B
L193	7B	R196	8B
L194	7B	C191	7A
CP191A	8B	C192	7B
JK101	7B	C193	7B
R191	7A	C194	7B

**H** SPEAKER SELECT LOGIC P.C.B.



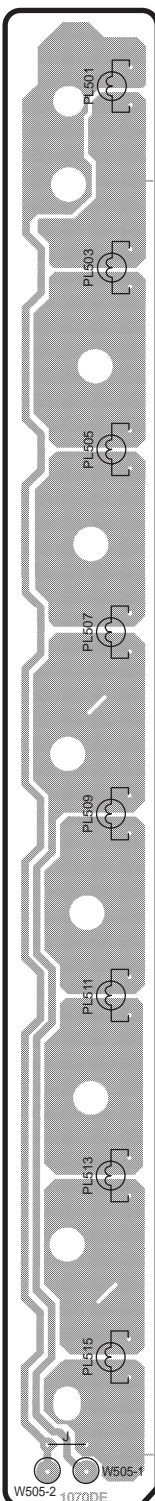
(REP1616D-S)

**C** LAMP(B) P.C.B.



(REP1616D-S)

**B** LAMP(A) P.C.B.



(REP1616D-S)

■ ELECTRICAL PARTS LOCATION

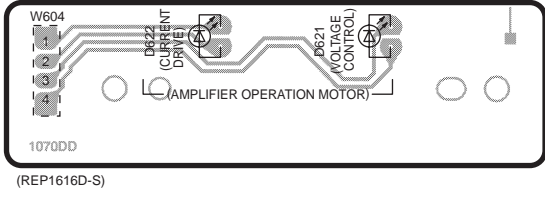
Ref. No.	Lo. No.	Ref. No.	Lo. No.
<b>H</b> SPEAKER SELECT LOGIC P.C.B.			
IC601	6A	CP501	2B
Q601	6A	CP502	5B
Q602	7A	CP551	3B
Q603	7A	CP601	4B
Q604	8A	CP602	8B
D601	6A	CP603	3B
D602	6B	W505	8A
D603	8A	W604	1A
D604	8A	R601	6B
D605	6B	R602	6B
D606	6B	R603	5B
D607	8B	R604	6B
D608	7B	R605	8B
D609	7B	R606	6B
D610	7B	R607	7A
D611	7B	R608	8B
D612	7B	R609	7A
D613	7B	R610	8A
D614	7B	R611	8B
D615	7B	R612	7A
D616	8B	R613	7A
D617	7B	R616	7A
D618	7A	R617	7A
D619	6A	R619	7A
D620	7A	R620	7A
D623	2B	R621	2B
D624	5B	R622	1B
D625	5B	R623	2B
D626	6A	R624	1A
D627	7A	C601	6B
D628	7A	C602	6B
D629	7A	C603	6B
D640	6A	C604	6B
D641	5A	C610	5A
<b>C</b> LAMP(B) P.C.B.			
PL502	2C	PL512	6C
PL504	3C	PL514	7C
PL506	3C	PL516	7C
PL508	4C	W505-3	2C
PL510	5C	W505-4	2C
<b>B</b> LAMP(A) P.C.B.			
PL501	2D	PL511	6D
PL503	3D	PL513	7D
PL505	4D	PL515	8D
PL507	4D	W505-1	8D
PL509	5D	W505-2	8D

1  
2  
3  
4  
5  
6  
7  
8

(SPEAKERS)

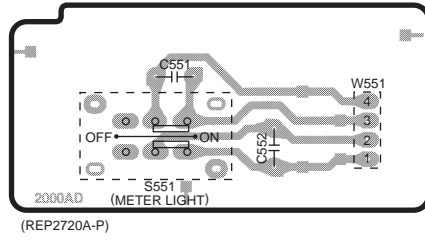
1

**G** LED P.C.B.



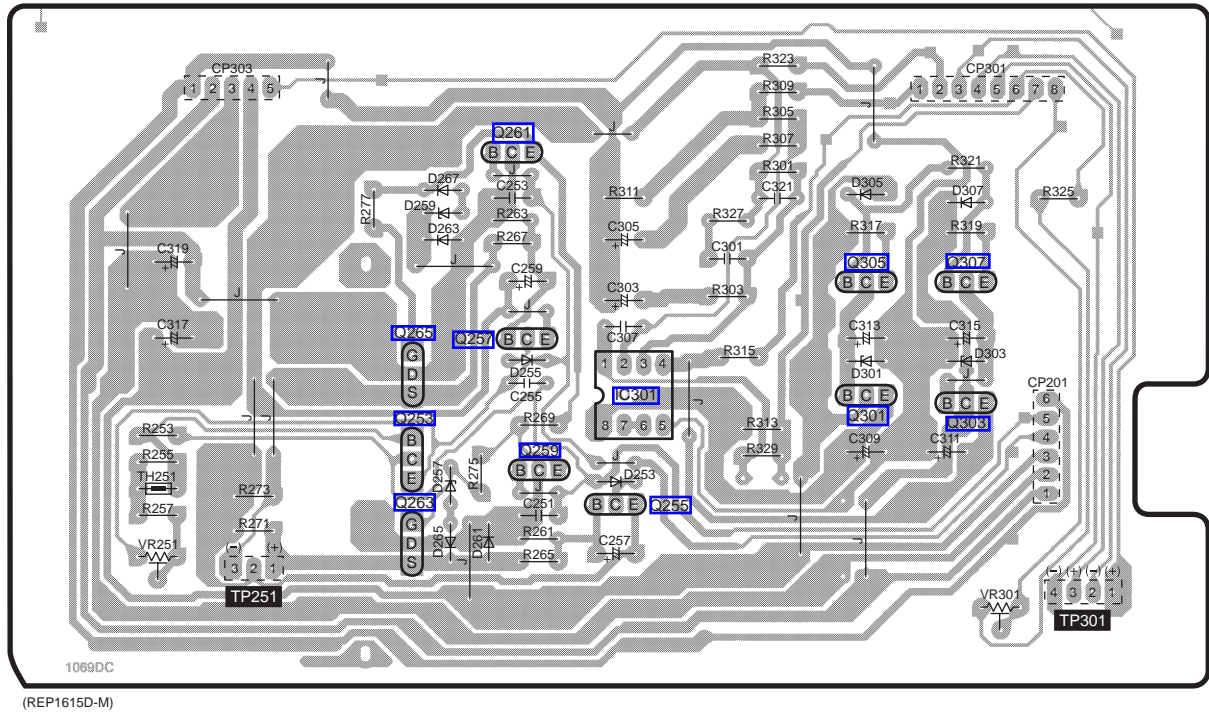
2

**E** LIGHT SW P.C.B.

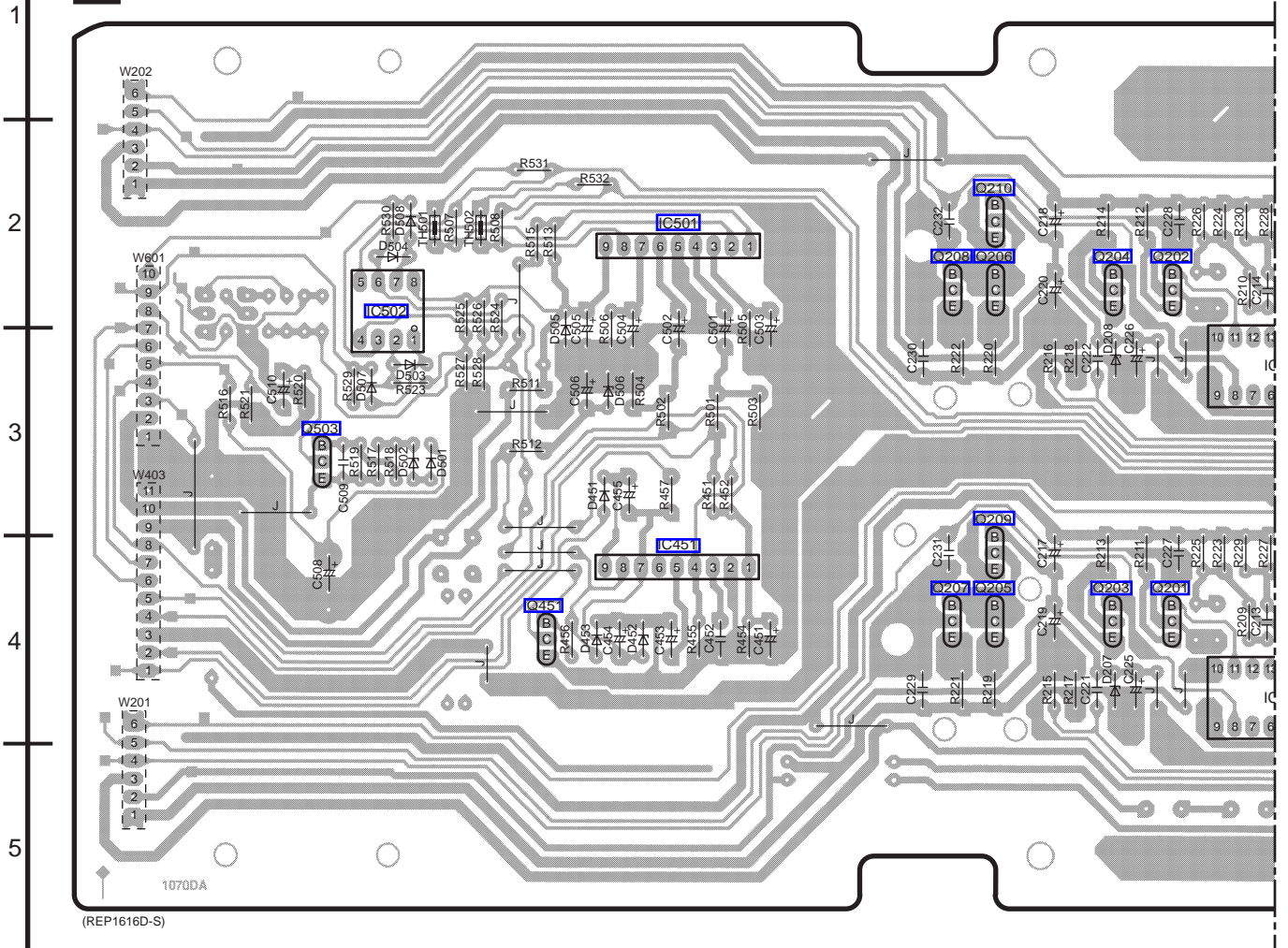


3

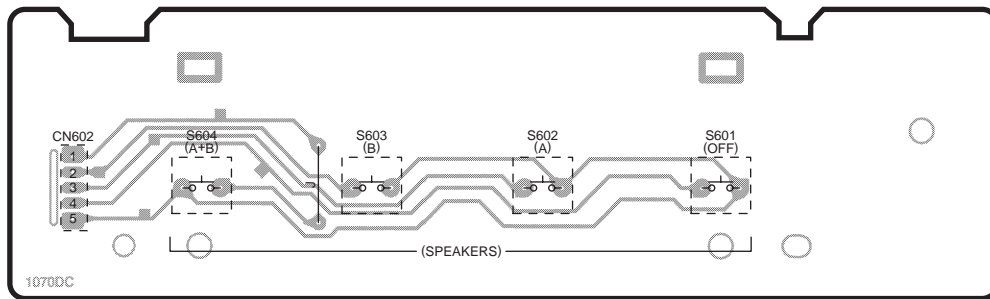
**I** VOLTAGE CONTROL AMP(L) P.C.B.

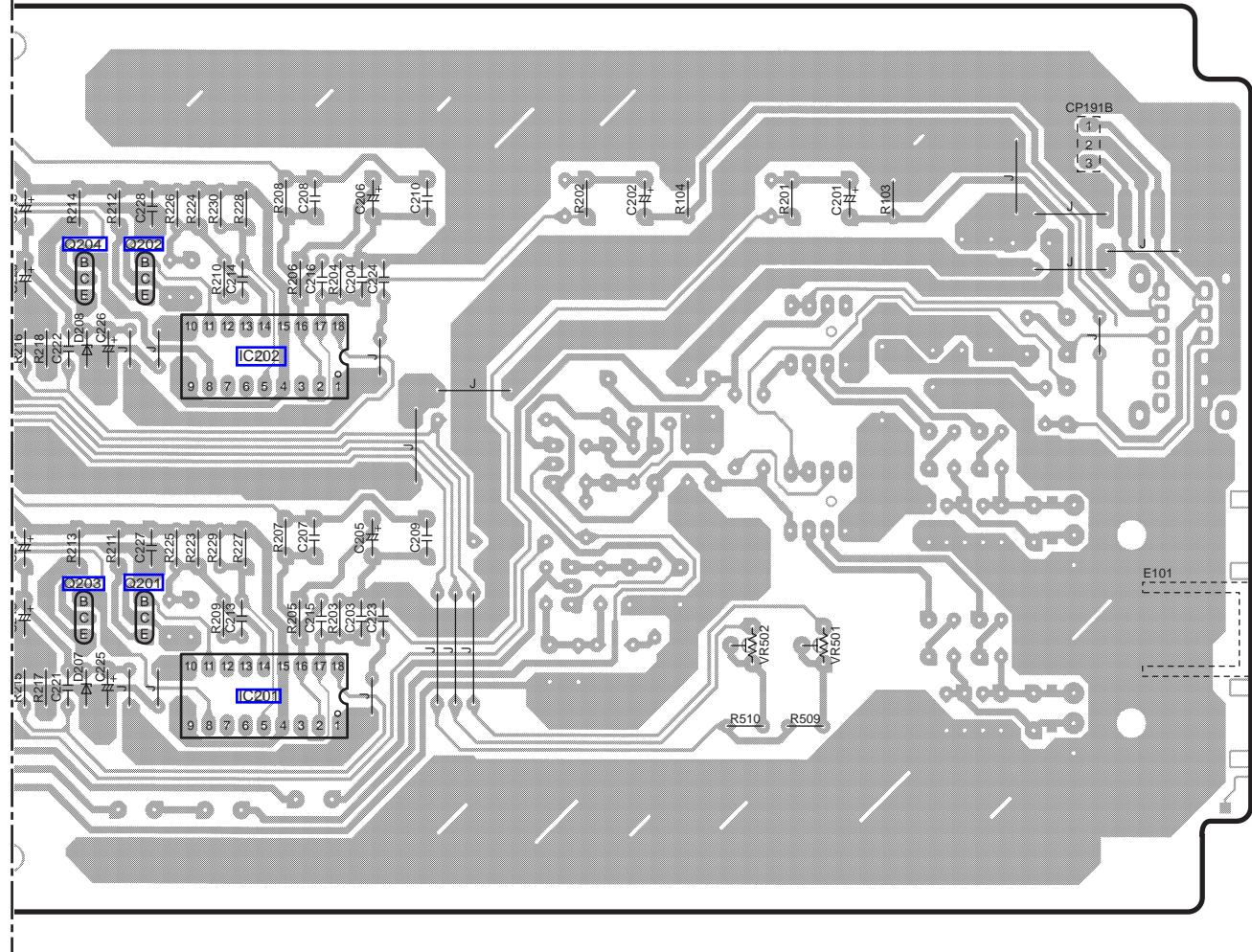
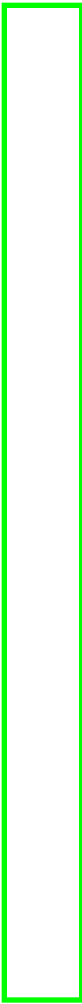


**D** MAIN P.C.B.



**F** SPEAKER SW P.C.B.

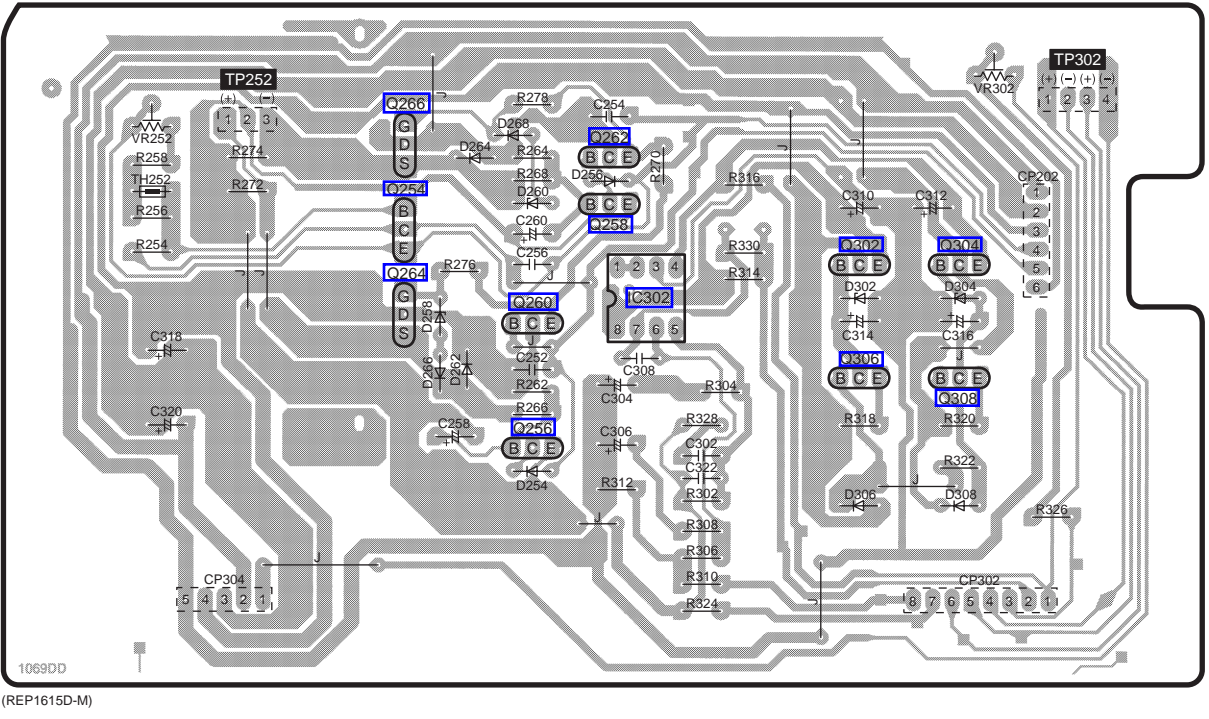




**■ ELECTRICAL PARTS LOCATION**

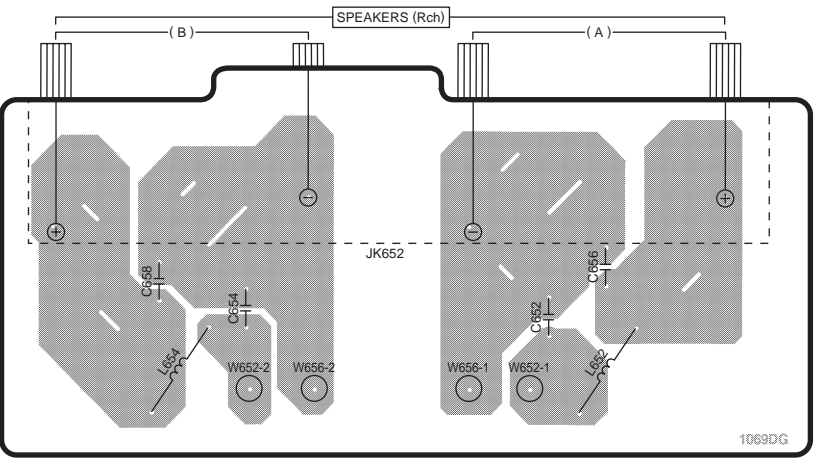
Ref. No.	Lo. No.	Ref. No.	Lo. No.	Ref. No.	Lo. No.	Ref. No.	Lo. No.	Ref. No.	Lo. No.	Ref. No.	Lo. No.	Ref. No.	Lo. No.
<b>D MAIN P.C.B.</b>													
IC201	4G	D501	3B	R203	4H	R225	4F	R511	3C	C203	4H	C227	4F
IC202	2G	D502	3B	R204	2H	R226	2F	R512	3C	C204	2H	C228	2F
IC451	4D	D503	3B	R205	4H	R227	4G	R513	2C	C205	4H	C229	4E
IC501	2D	D504	2B	R206	2H	R228	2H	R515	2C	C206	2H	C230	3E
IC502	2B	D505	3C	R207	4H	R229	4G	R516	3A	C207	4H	C231	4E
Q201	4F	D506	3C	R208	2H	R230	2G	R517	3B	C208	2H	C232	2E
Q202	2F	D507	3B	R209	4G	R451	3D	R518	3B	C209	4H	C451	4D
Q203	4F	D508	2B	R210	2G	R452	3D	R519	3B	C210	2H	C452	4D
Q204	2F	VR501	4J	R211	4F	R454	4D	R520	3B	C213	4G	C453	4D
Q205	4E	VR502	4J	R212	2F	R455	4D	R521	3B	C214	2H	C454	4D
Q206	2E	TH501	2B	R213	4F	R456	4C	R523	3B	C215	4H	C455	3C
Q207	4E	TH502	2C	R214	2F	R457	3D	R524	2C	C216	2H	C501	3D
Q208	2E	CP191B	2L	R215	4E	R501	3D	R525	2C	C217	4E	C502	3D
Q209	4E	W201	4A	R216	3E	R502	3D	R526	2C	C218	2E	C503	3D
Q210	2E	W202	1A	R217	4F	R503	3D	R527	3C	C219	4E	C504	3D
Q451	4C	W403	3A	R218	3F	R504	3C	R528	3C	C220	2E	C505	3C
Q503	3B	W601	2A	R219	4E	R505	3D	R529	3B	C221	4F	C506	3C
D207	4F	E101	4L	R220	3E	R506	3C	R530	2B	C222	3F	C508	4B
D208	3F	R103	2K	R221	4E	R507	2C	R531	2C	C223	4H	C509	3B
D451	3C	R104	2J	R222	3E	R508	2C	R532	2C	C224	2H	C510	3B
D452	4C	R201	2J	R223	4G	R509	4J	C201	2J	C225	4F		
D453	4C	R202	2I	R224	2G	R510	4J	C202	2I	C226	3F		
<b>F SEAKER SW P.C.B.</b>													
S601	7D	S602	7D	S603	7C	S604	7B	CN602	7B				

1  
2  
3  
4  
5  
6  
7  
8



1069DD  
(REP1615D-M)

**P** SPEAKER TERMINAL(R) P.C.B.



1069DG  
(REP1615D-M)

**ELECTRICAL PARTS LOCATION**

Ref. No.	Lo. No.	Ref. No.	Lo. No.
<b>J</b> VOLTAGE CONTROL AMP(R) P.C.B.			
IC302	2D	R268	2C
Q254	2C	R270	2D
Q256	3C	R272	2B
Q258	2D	R274	2B
Q260	2C	R276	2C
Q262	2D	R278	1C
Q264	2C	R302	3D
Q266	2C	R304	3D
Q302	2E	R306	3D
Q304	2E	R308	3D
Q306	3E	R310	4D
Q308	3E	R312	3D
D254	3C	R314	2D
D256	2D	R316	2D
D258	2C	R318	3E
D260	2C	R320	3E
D262	3C	R322	3E
D264	2C	R324	4D
D266	3C	R326	3F
D268	2C	R328	3D
D302	2E	R330	2D
D304	2E	C252	3C
D306	3E	C254	1D
D308	3E	C256	2C
VR252	2B	C258	3C
VR302	1E	C260	2C
TH252	2B	C302	3D
CP202	2E	C304	3D
CP302	4E	C306	3D
CP304	4B	C308	3D
TP252	1B	C310	2E
TP302	1F	C312	2E
R254	2B	C314	2E
R256	2B	C316	2E
R258	2B	C318	3B
R262	3C	C320	3B
R264	2C	C322	3D
R266	3C		

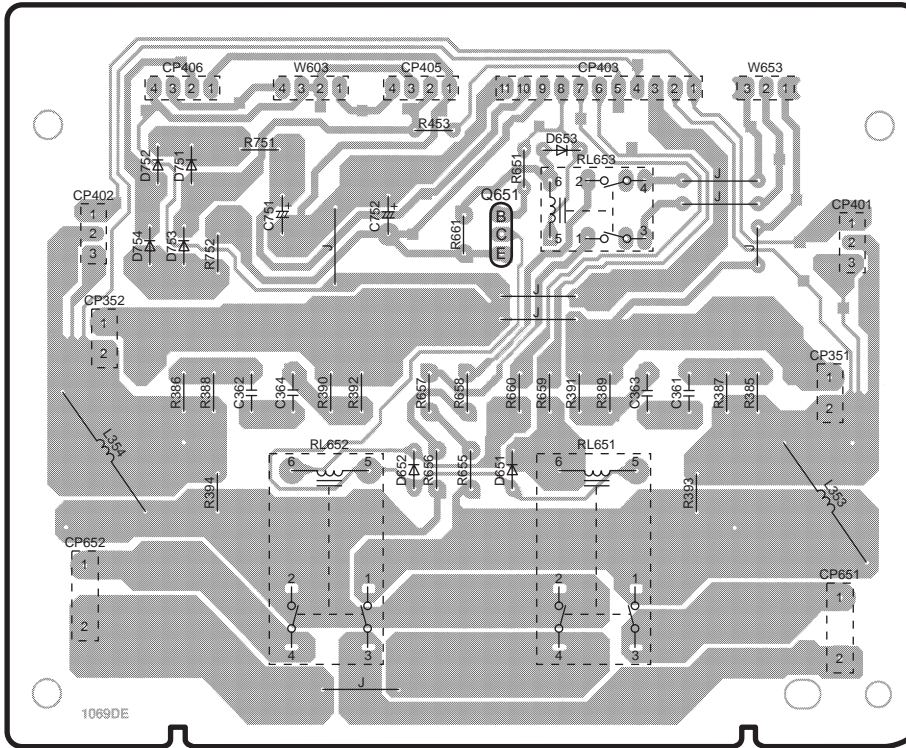
**P** SPEAKER TERMINAL(R) P.C.B.

L652	7D	JK652	6C
L654	7B	C652	7C
W652-1	7C	C654	6B
W652-2	7B	C656	6D
W656-1	7C	C658	6B
W656-2	7B		





**N** RELAY P.C.B.

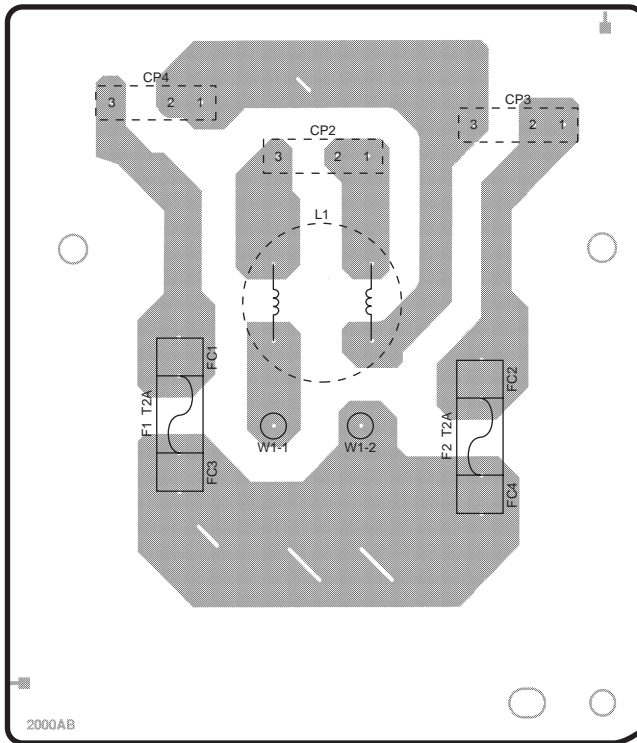


(REP1615D-M)

**ELECTRICAL PARTS LOCATION**

Ref. No.	Lo. No.	Ref. No.	Lo. No.
<b>N RELAY P.C.B.</b>			
Q651	2C	R387	3D
D651	3C	R388	3B
D652	3C	R389	3D
D653	2C	R390	3B
D751	2B	R391	3C
D752	2A	R392	3B
D753	2B	R393	3D
D754	2A	R394	3B
L353	3D	R453	2C
L354	3A	R651	2C
RL651	3C	R655	3C
RL652	3B	R656	3C
RL653	2C	R657	3C
CP351	3E	R658	3C
CP352	3A	R659	3C
CP401	2E	R660	3C
CP402	2A	R661	2C
CP403	1C	R751	2B
CP405	1C	R752	2B
CP406	1B	C361	3D
CP651	4E	C362	3B
CP652	4A	C363	3D
W603	1B	C364	3B
W653	1D	C751	2B
R385	3D	C752	2C
R386	3B		
<b>Q FUSE P.C.B.</b>			
L1	6B	W1-1	7B
F1	7B	W1-2	7B
F2	7C	FC1	7B
CP2	6B	FC2	7C
CP3	5C	FC3	7B
CP4	5B	FC4	7C
<b>R POWER SW P.C.B.</b>			
S1	7E	C1	7E
CP1	7E	C659	7F
CP653	7F	C660	7F
JK653	6F		

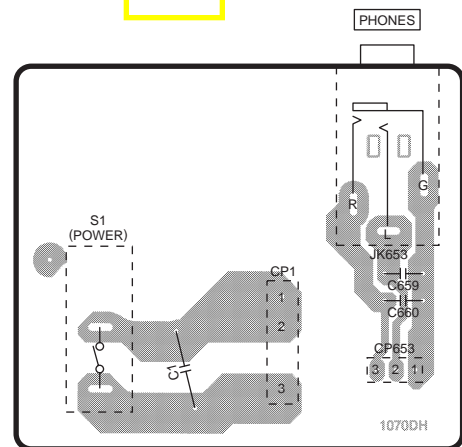
**Q** FUSE P.C.B.



2000AB

(REP2720A-P)

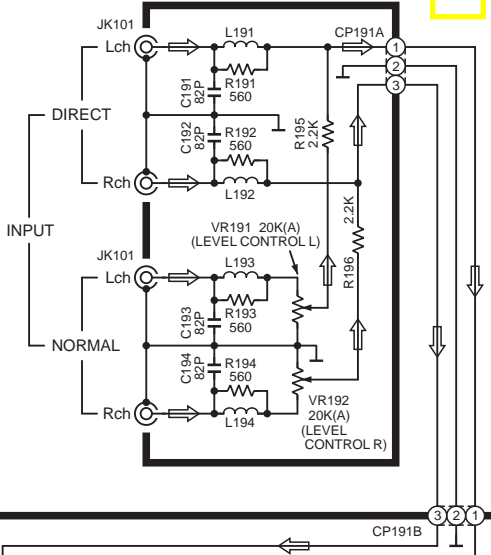
**R** POWER SW P.C.B.



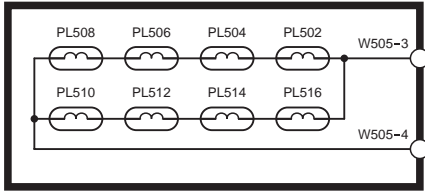
1070DH

(REP1616D-S)

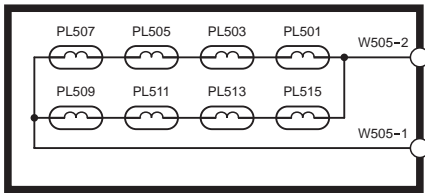
**A INPUT TERMINAL CIRCUIT**  
(P.C.Board: on page 23)



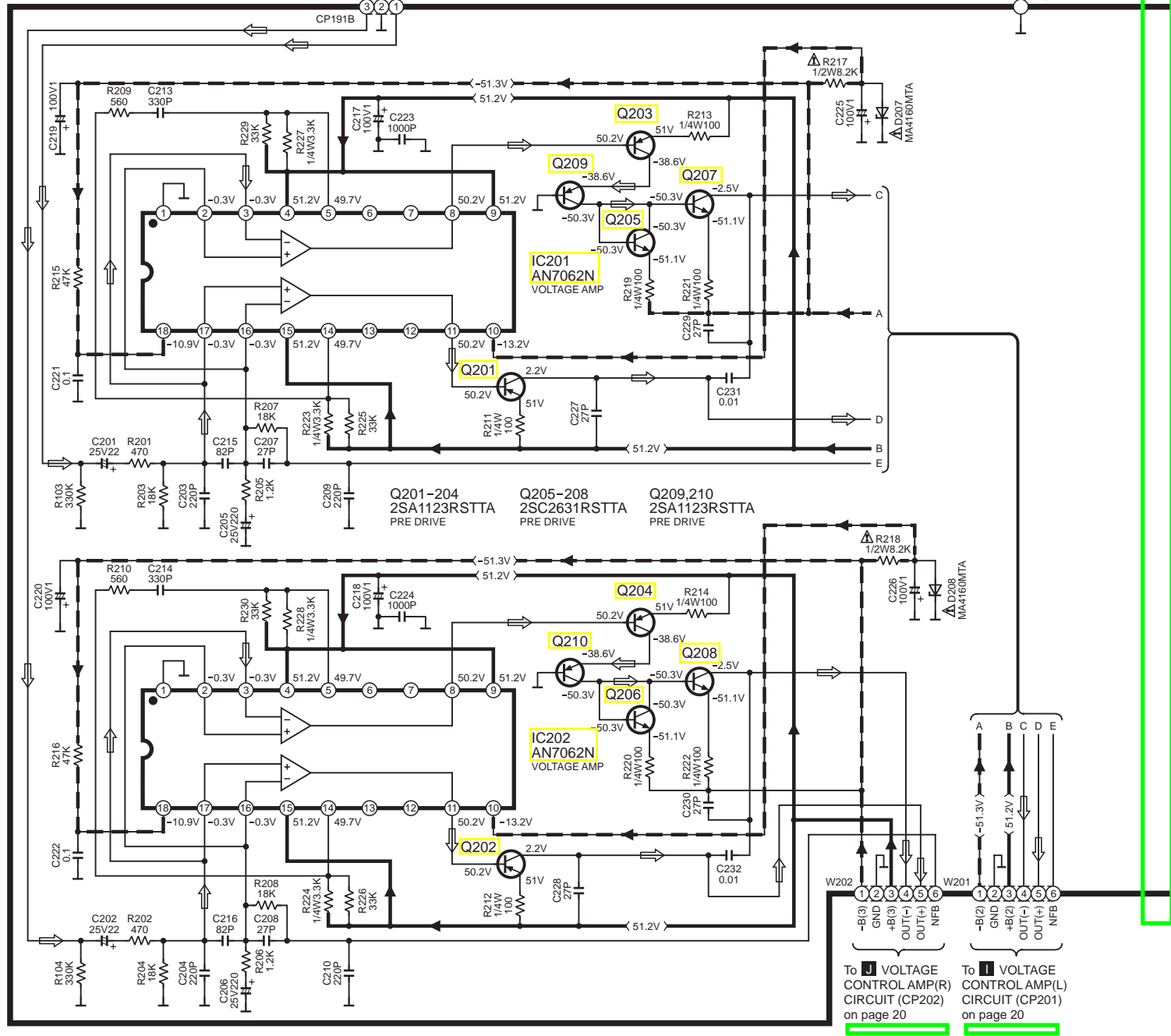
**C LAMP (B) CIRCUIT**  
(P.C.Board: on page 24)



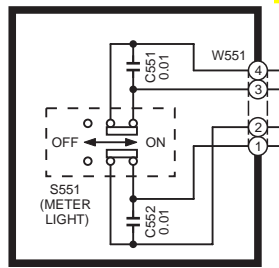
**B LAMP (A) CIRCUIT**  
(P.C.Board: on page 24)



**D MAIN CIRCUIT** (P.C.Board: on pages 26,27)



**E LIGHT SW CIRCUIT**  
(P.C.Board: on page 25)

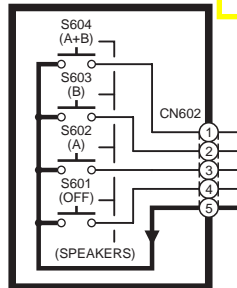


→ : POSITIVE VOLTAGE LINE  
 - - - - - : NEGATIVE VOLTAGE LINE  
 ⇨ : SOURCE SIGNAL LINE

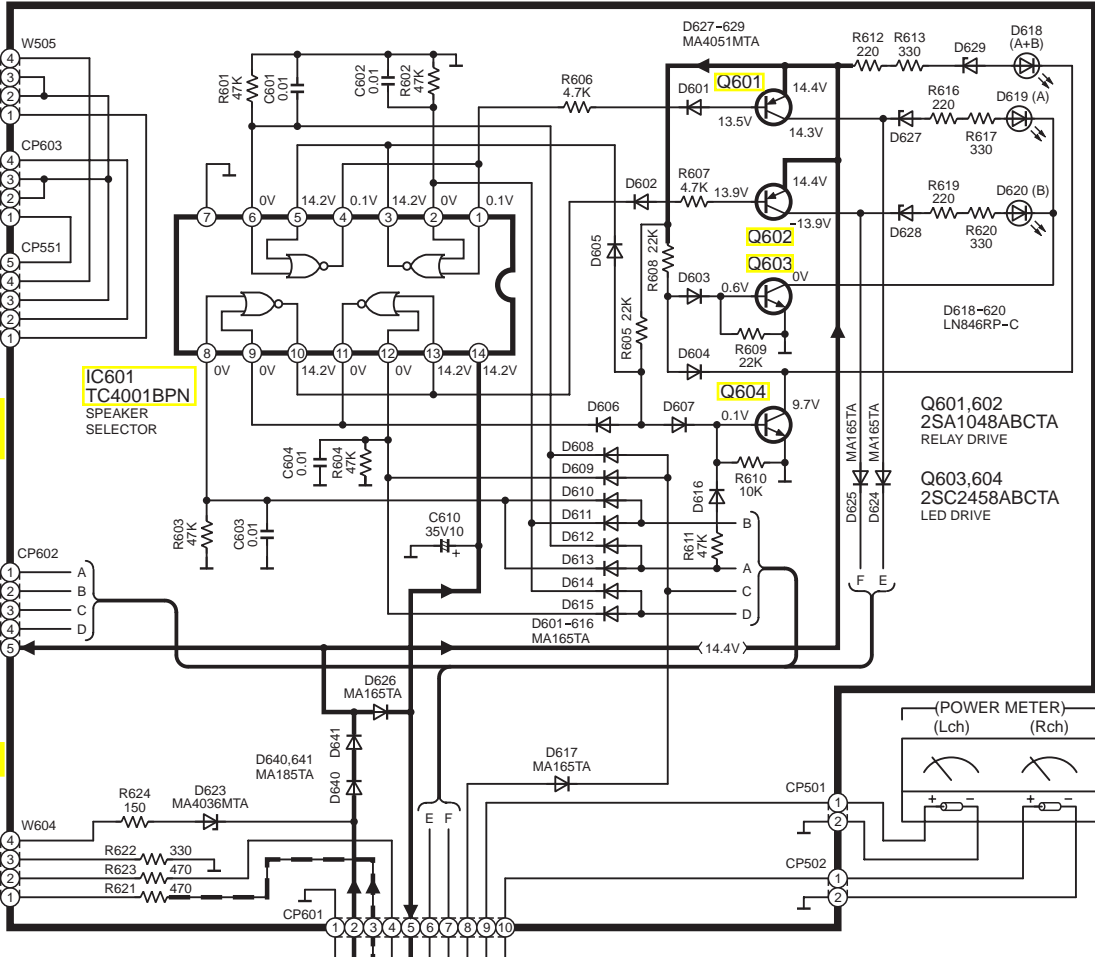
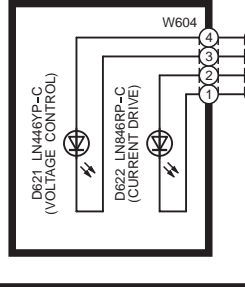
To **IC201** VOLTAGE CONTROL AMP(R) CIRCUIT (CP202) on page 20  
 To **IC202** VOLTAGE CONTROL AMP(L) CIRCUIT (CP201) on page 20

To **N** RELAY CIRCUIT (W603) on page 22

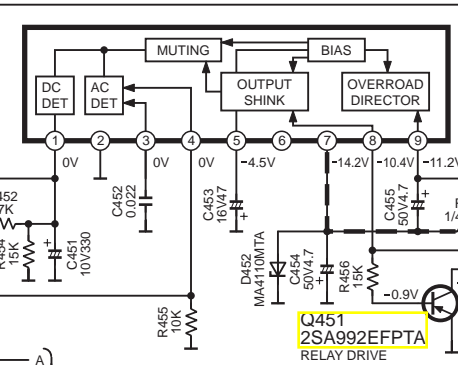
**F** SPEAKER SW CIRCUIT (P.C.Board: on page 26)



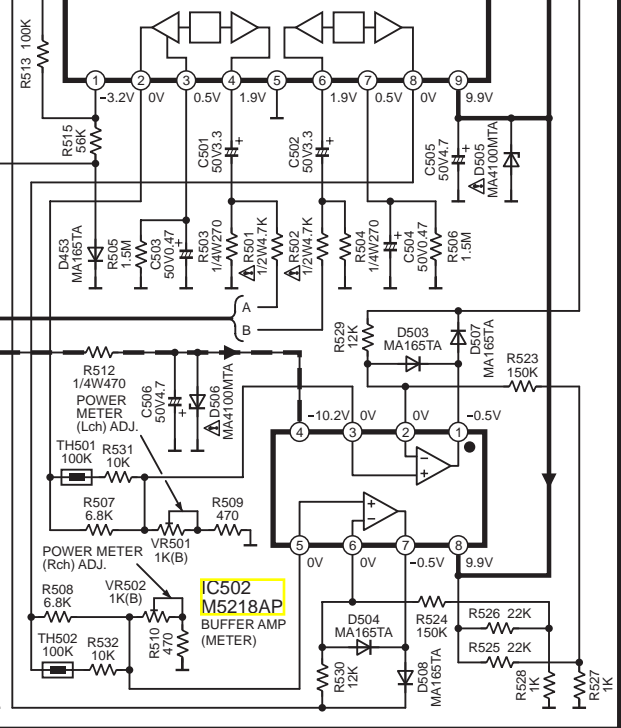
**G** LED CIRCUIT (P.C.Board: on page 25)



**IC451 AN7073** MUTING / PROTECTION

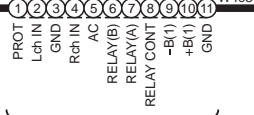


**IC501 BA6138** METER DRIVE AMP



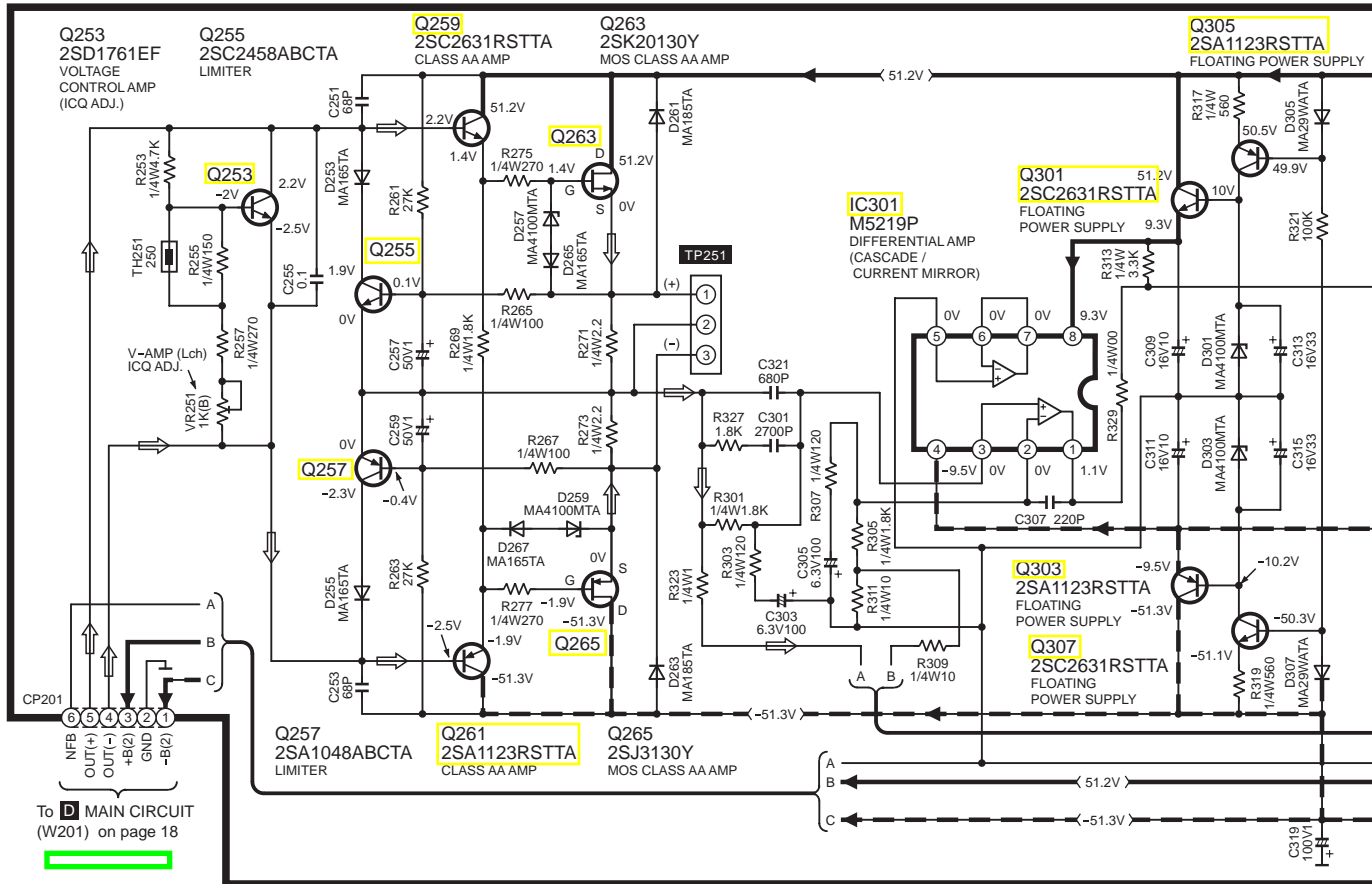
**Q503 2SA1048ABCTA** SWITCHING

To **N** RELAY CIRCUIT (CP403) on page 22

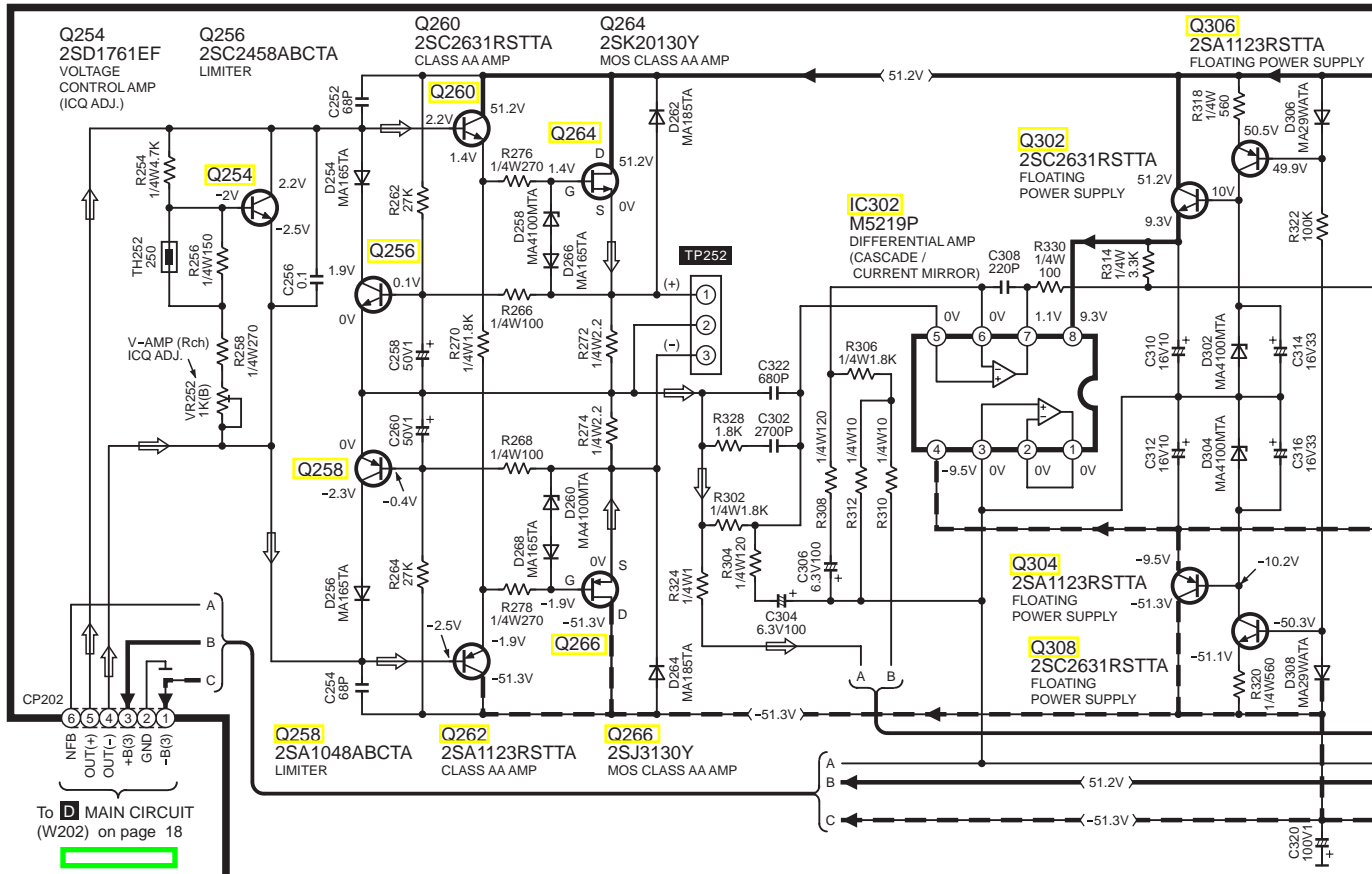


——— POSITIVE VOLTAGE LINE  
 - - - - - NEGATIVE VOLTAGE LINE  
 ⇨ SOURCE SIGNAL LINE

**I VOLTAGE CONTROL AMP (L) CIRCUIT** (P.C.Board: on page 25)

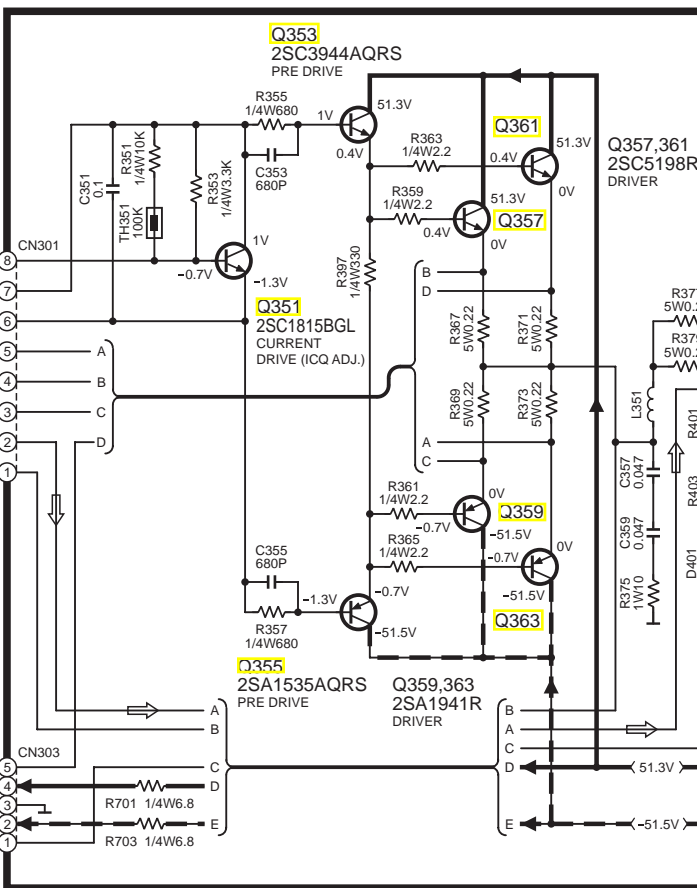
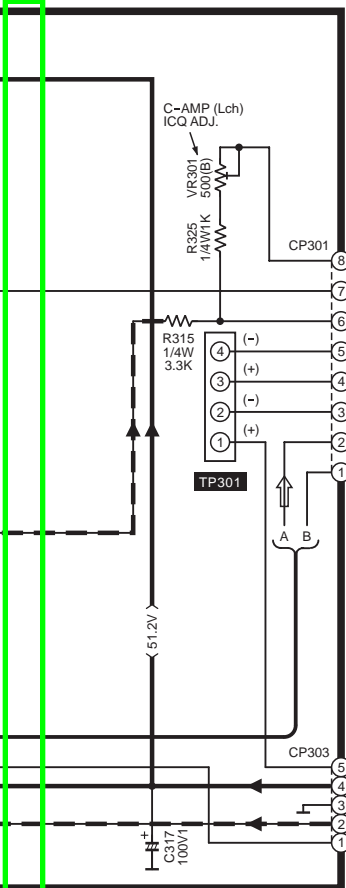


**J VOLTAGE CONTROL AMP (R) CIRCUIT** (P.C.Board: on page 28)

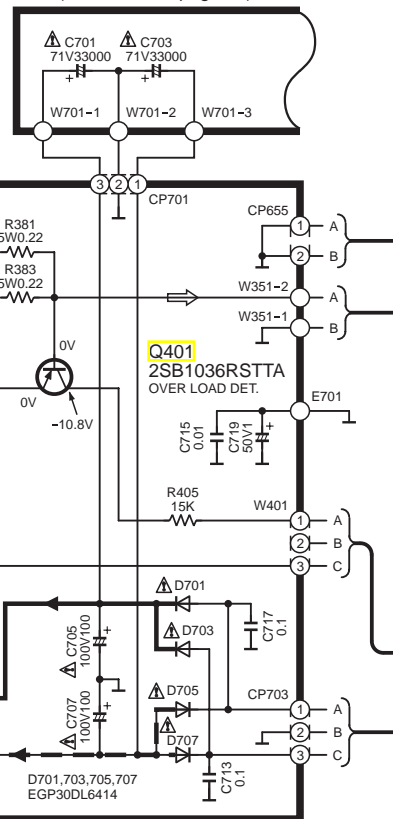


### K CURRENT DRIVE AMP (L) CIRCUIT (P.C.Board:on page 29)

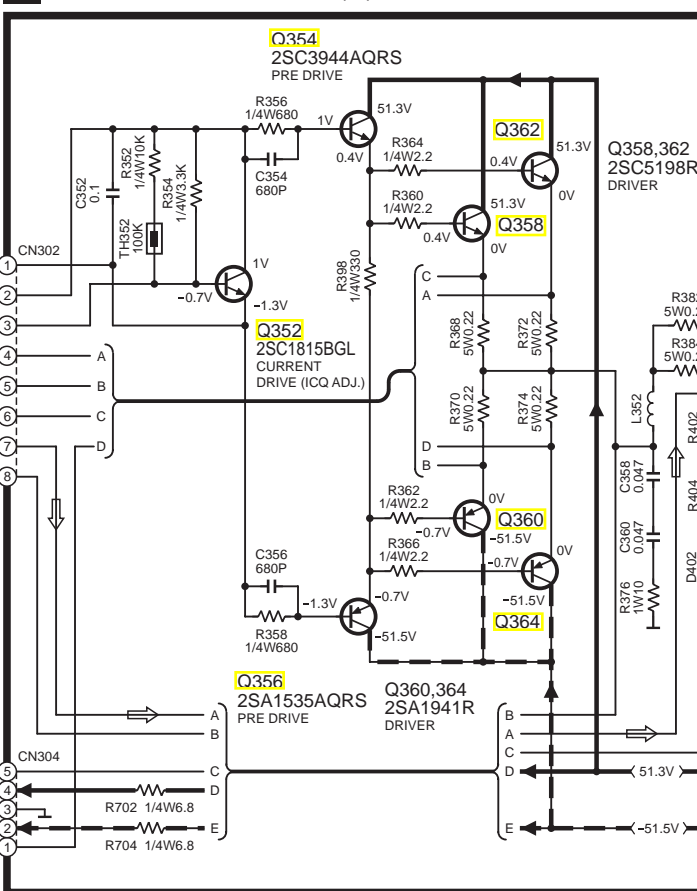
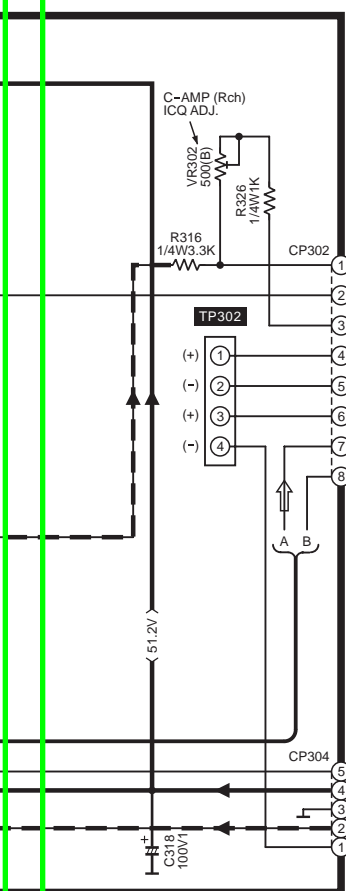
→ : POSITIVE VOLTAGE LINE  
→ : NEGATIVE VOLTAGE LINE  
→ : SOURCE SIGNAL LINE



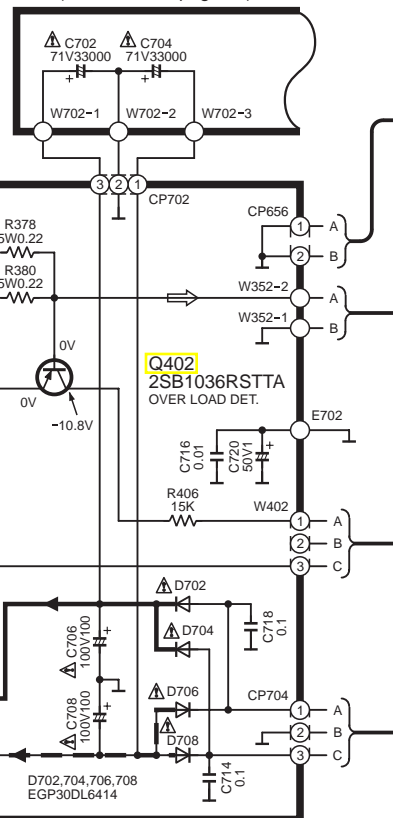
### M CAPACITOR CIRCUIT (P.C.Board:on page 23)



### L CURRENT DRIVE AMP (R) CIRCUIT (P.C.Board:on page 29)



### M CAPACITOR CIRCUIT (P.C.Board:on page 23)

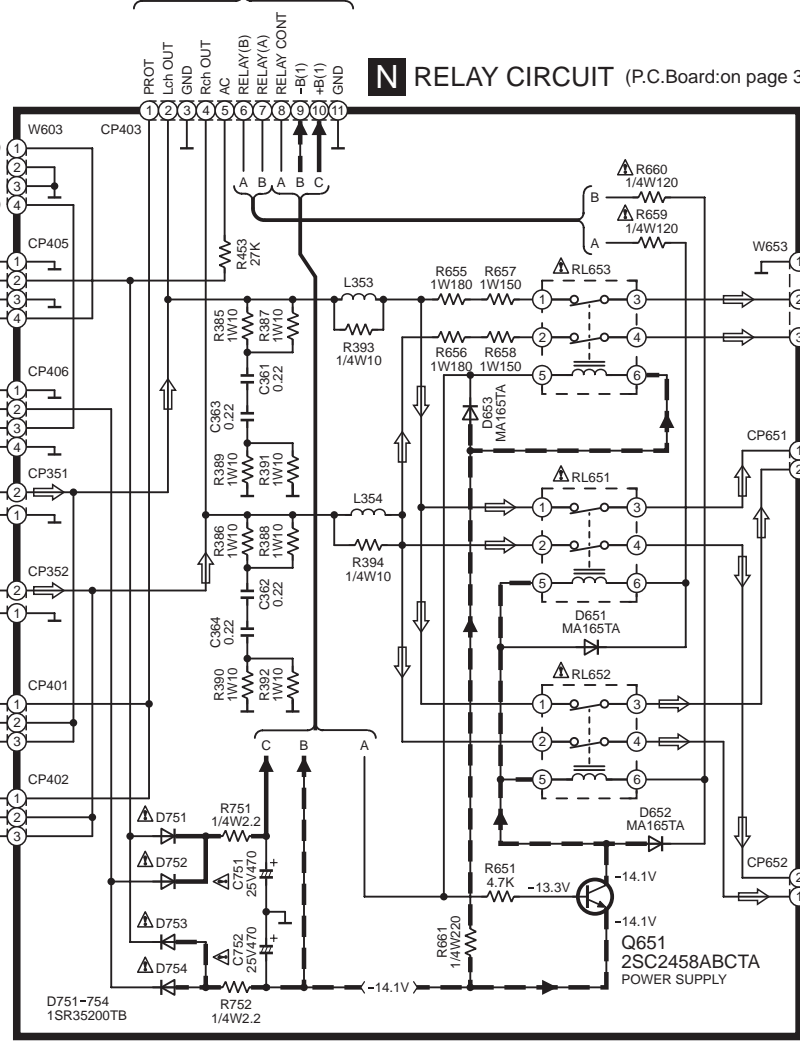


To **D** MAIN CIRCUIT (W403) on page 19

### N RELAY CIRCUIT (P.C.Board: on page 30)

- : POSITIVE VOLTAGE LINE
- : NEGATIVE VOLTAGE LINE
- : SOURCE SIGNAL LINE

To **H** SPEAKER SELECT LOGIC CIRCUIT (CP603) on page 19



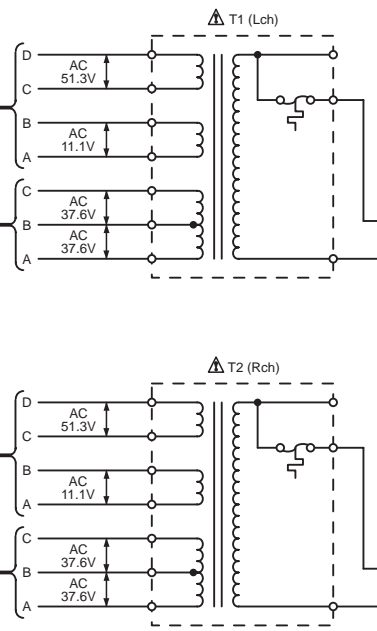
### O SPEAKER TERMINAL (L) CIRCUIT (P.C.Board: on page 23)

### P SPEAKER TERMINAL (R) CIRCUIT (P.C.Board: on page 28)

SPEAKERS

### Q FUSE CIRCUIT (P.C.Board: on page 30)

### R POWER SW CIRCUIT (P.C.Board: on page 30)



( 230V/50Hz ... (E,EG)  
230-240V/50Hz ... (EB) )

