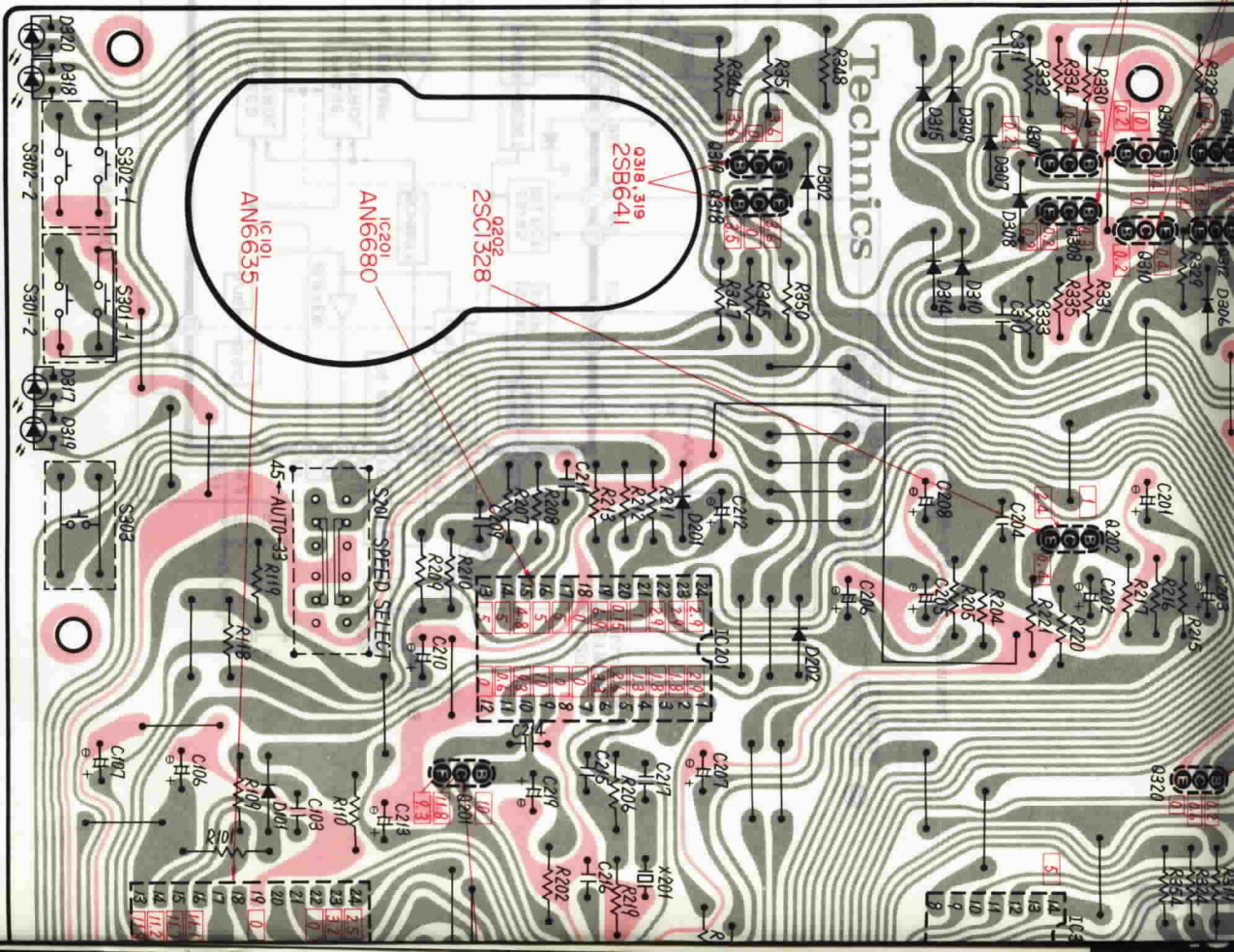
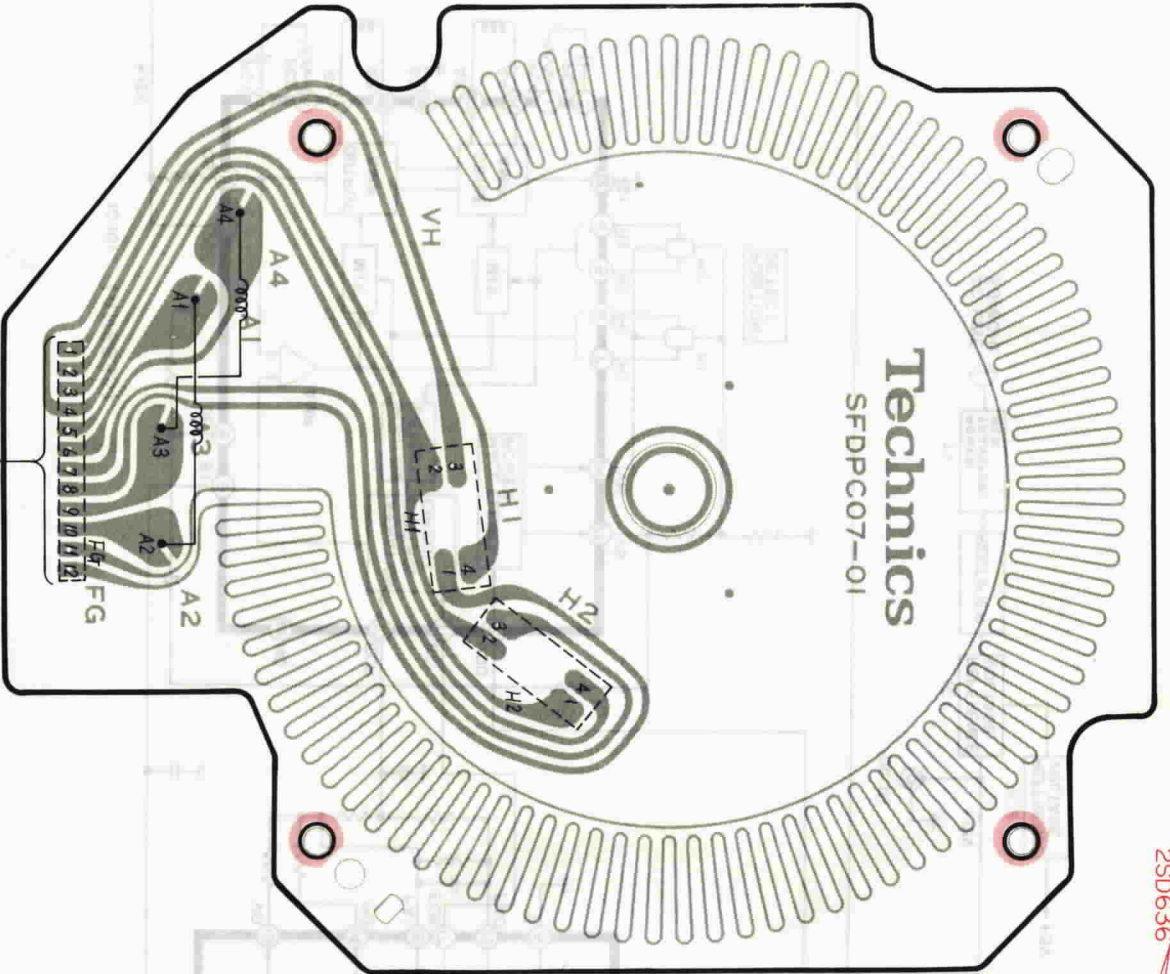


AC LINE
 110~120/220~240V
 (50/60Hz)

Repeat

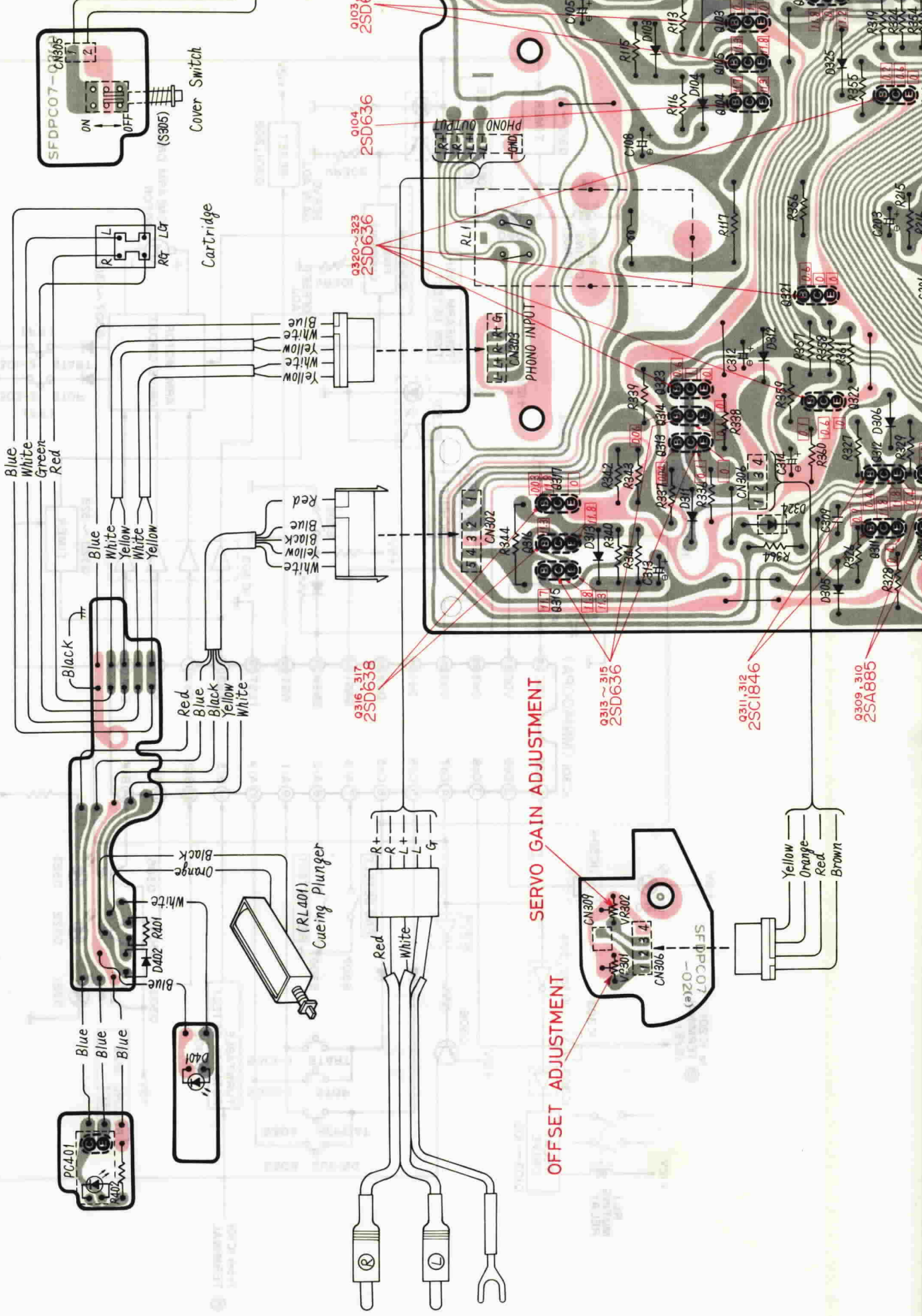


0307, 308
2SD636

Stop

Start

Cueing



Q103 ~ Q105
2SD636

Q104
2SD636

Q320 ~ Q323
2SD636

Q316 ~ Q317
2SD636

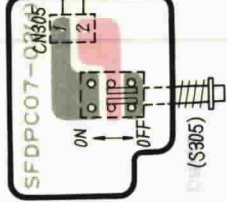
Q313 ~ Q315
2SD636

Q311, Q312
2SC1846

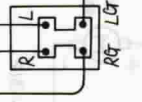
Q309 ~ Q310
2SA885

SERVO GAIN ADJUSTMENT

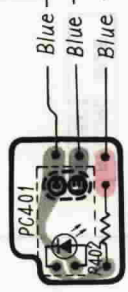
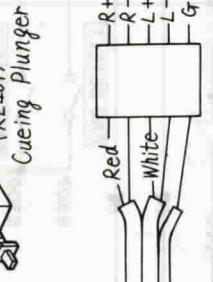
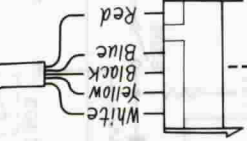
OFFSET ADJUSTMENT



Cover Switch



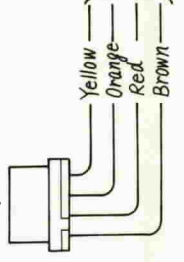
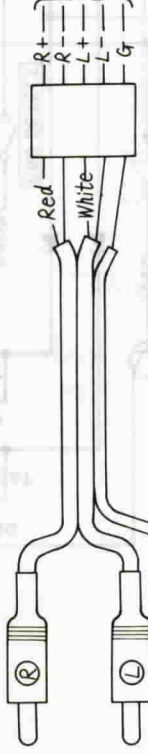
Cartridge



PC401



D401



Servo Gain Adjustment