

SCHEMATIC DIAGRAM

1 2 3 4 5 6 7 8 9 10 11 12 13 14

A

B

C

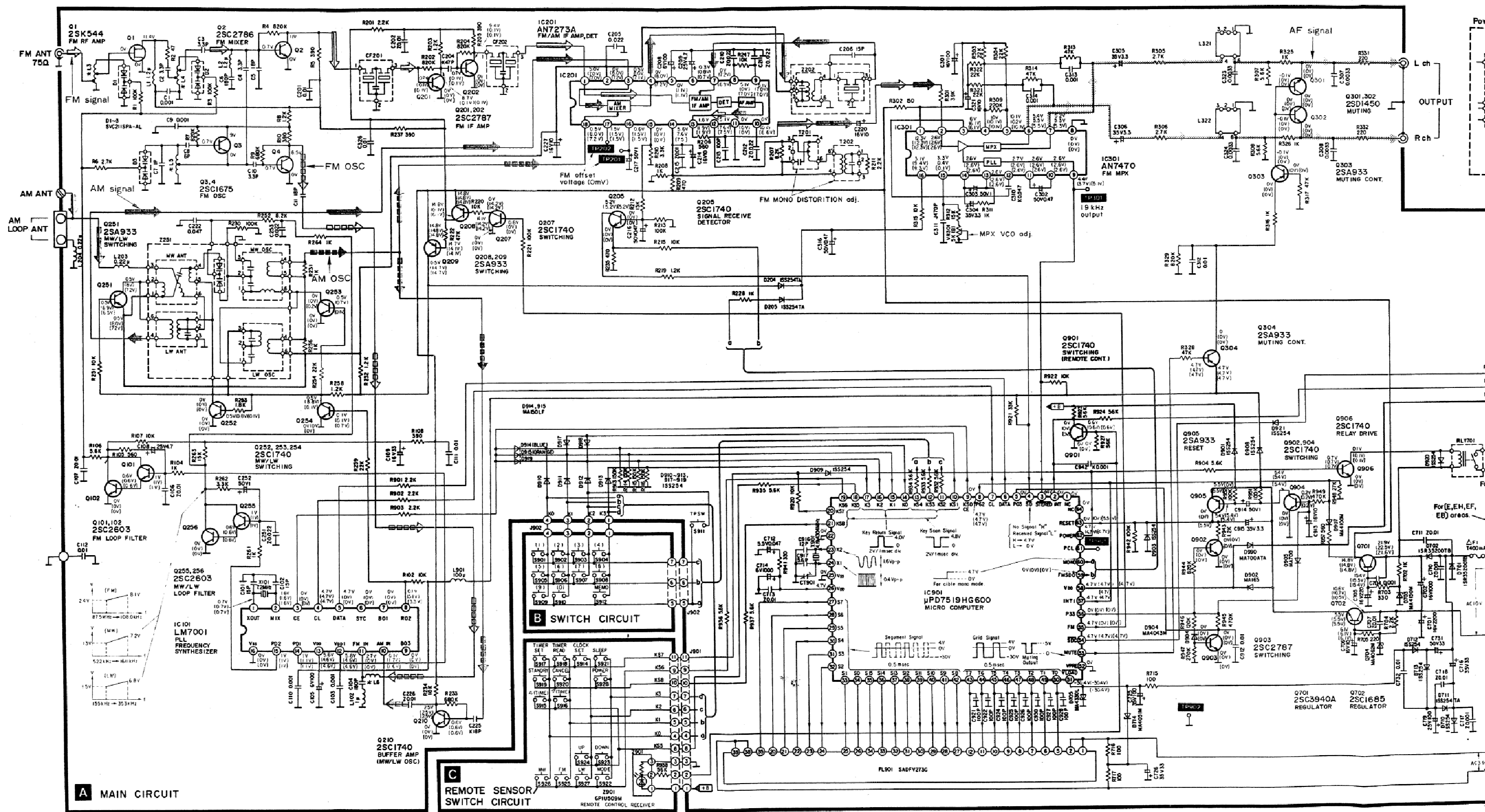
D

E

F

G

H



A MAIN CIRCUIT

B SWITCH CIRCUIT

C REMOTE SENSOR/SWITCH CIRCUIT

14 15 16 17 18 19

(This schematic diagram may be modified at any time with the development of new technology.)

Note 1:

- **S1** : Voltage selector switch in "240 V" position. (110 V → 127 V → 220 V → 240 V)
For (XA) area only.
- **S901~S910** : Preset tuning switches.
{ S901: CH1, S902: CH2, S903: CH3, S904: CH4, S905: CH5, S906: CH6, S907: CH7, S908: CH8, S909: CH9, S910: CH0 }
- **S911** : Test point switch. (PLL clock)
- **S912** : Memory switch.
- **S914** : Time-set switch.
- **S915~S921** : Timer operation switches.
{ S915: SELECT (▲), S916: SELECT (▼), S917: SET, S918: READ, S919: STANDBY, S920: CANCEL, S921: SLEEP }
- **S922** : FM mode selector switch.
- **S923, S924** : Tuning switches.
S923: DOWN, S924: UP
- **S925~S927** : Band selector switches.
S925: FM, S926: MW, S927: LW
- **S928** : Power switch.

• Indicated voltage values are the standard values for the unit measured by the DC electronic circuit tester (high-impedance) with the chassis taken as standard. Therefore, there may exist some errors in the voltage values, depending on the internal impedance of the DC circuit tester. () : AM voltage

- Positive voltage lines
- FM OSC
- AM OSC
- AF signal lines
- FM signal
- AM signal

• Important safety notice
Components identified by Δ mark have special characteristics important for safety. When replacing any of these components, use only manufacturer's specified parts.

Note 2:

• **Use of ceramic filters in pairs**
The ceramic filters (CF201, CF202) for FM-IF circuit are available in three ranks. For this circuit, be sure to use the ceramics of the same rank in a pair.
At repairing and replacement, pay close attention to the diodes (D906, D907) for use as different diodes must be used depending on each rank of the ceramic filters.

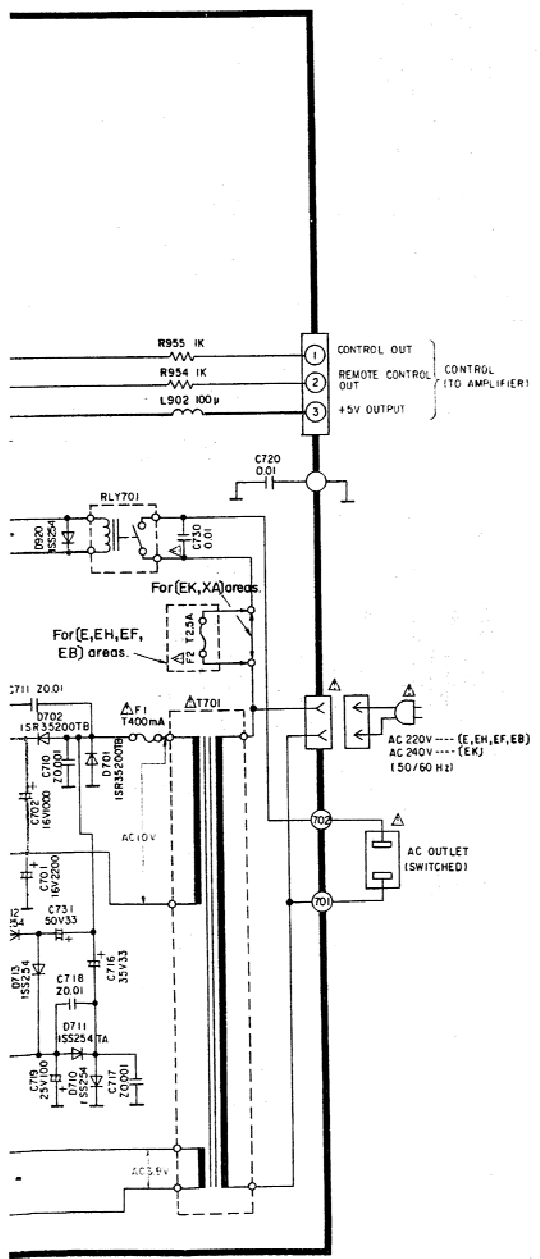
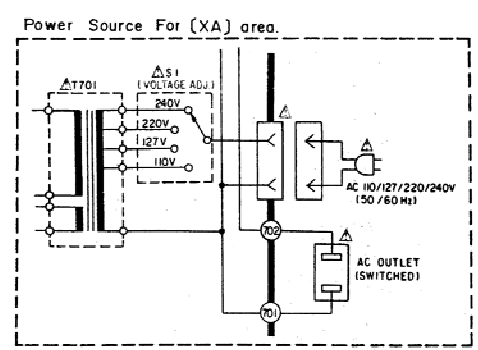
Color marking
(Red, Black or White)

RANK (Color)	D906	D907	CENTER FREQUENCY
White	○	×	10.65 MHz
Red	×	×	10.70 MHz
Black	×	○	10.76 MHz

Note: ○ mark: Diode is used.
× mark: Diode is not used.

*** Caution!**

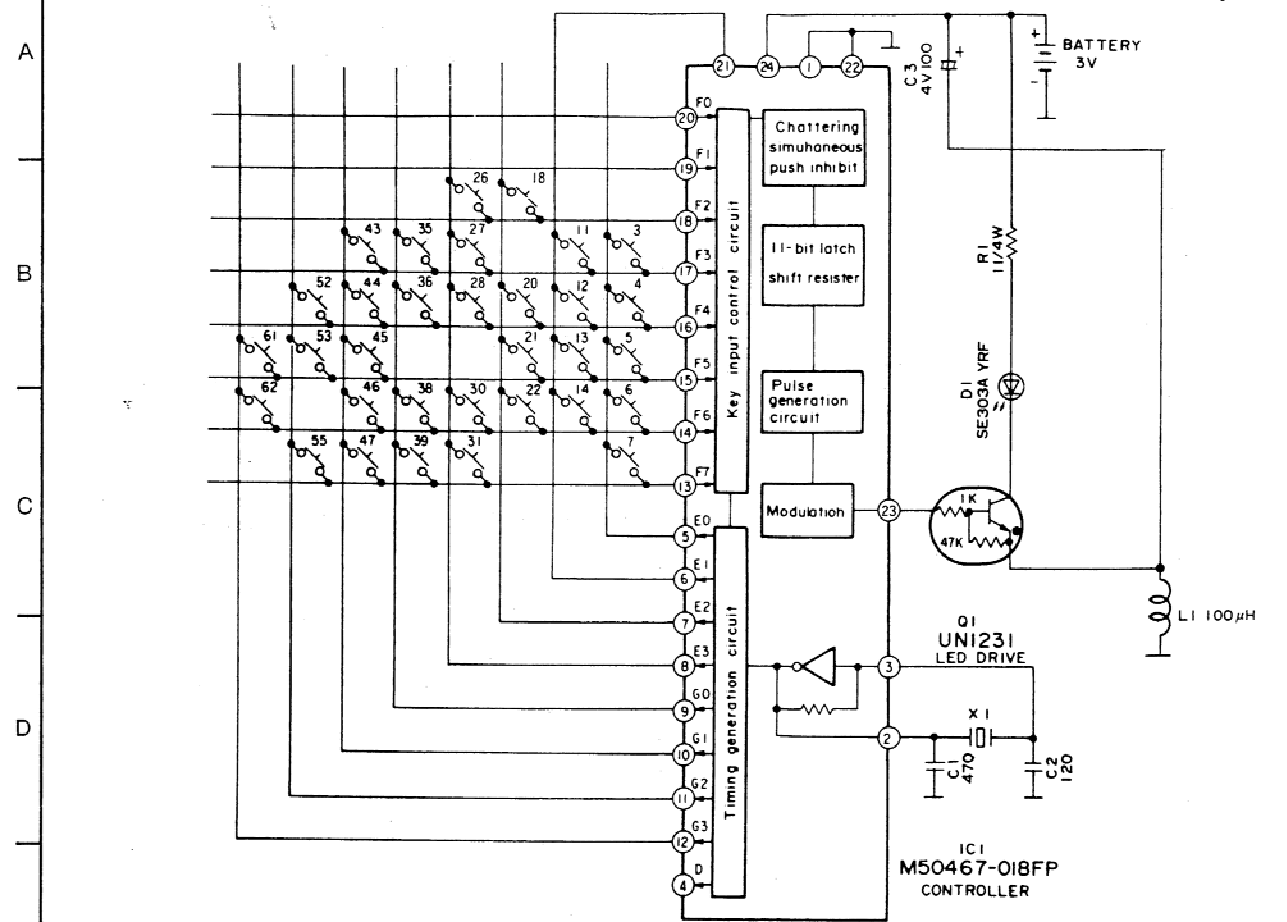
- IC and LSI are sensitive to static electricity. Secondary trouble can be prevented by taking care during repair.
- * Cover the parts boxes made of plastics with aluminum coil.
- * Ground the soldering iron.
- * Put a conductive mat on the work table.
- * Do not touch the legs of IC or LSI with the fingers directly.



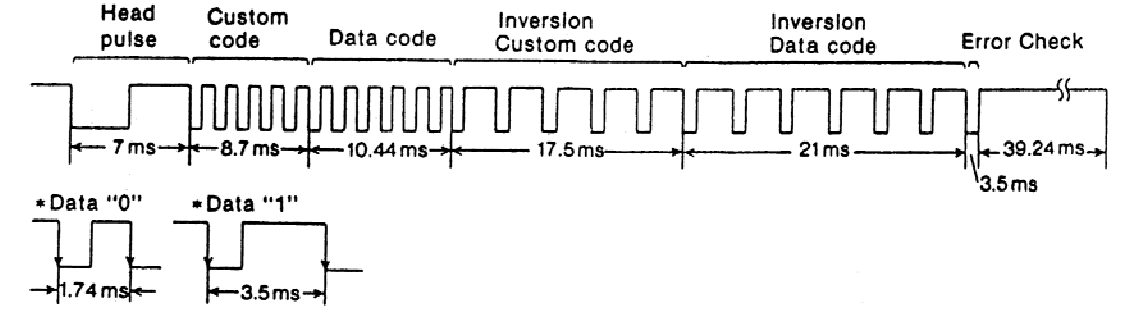
1 2 3 4 5 6

• Remote control unit

Note: Key No. 3, 36 and 45 are for EUR64753 only.



• Remote control data code



Key No.	Function	Custom code	Data code	Key No.	Function	Custom code	Data code
3	Auto rec mute	01001	000111	30	Tuner 8	01001	010111
4	Deck play ◀	01001	001001	31	Tuner 1	01001	010000
5	Vol. up	01001	100100	35	CD+skip/search	01100	000010
6	Tuner 5	01001	010100	36	Pause	01001	000110
7	Power ON/OFF	01001	100000	38	Tuner 9	01001	011000
11	CD play/pause	01100	001010	39	Tuner 2	01001	010001
12	Deck play ▶	01001	001010	43	CD+skip/search	01100	000011
13	Vol. Down	01001	100101	44	Deck stop	01001	000000
14	Tuner 6	01001	010101	45	*1	01001	110011
18	Turntable start	01001	001100	46	Tuner 0	01001	011001
20	Deck ◀◀	01001	000010	47	Tuner 3	01001	010010
21	Muting	01001	100111	52	Rec Pause	01001	001000
22	Tuner 7	01001	010110	53	Deck A/B	01001	000100
26	Turntable stop	01001	001101	55	Tuner 4	01001	010011
27	CD stop	01100	000000	61	EQ+OF/FLAT	01001	110000
28	Deck ▶▶	01001	000011	62	EQ Preset	01001	110010