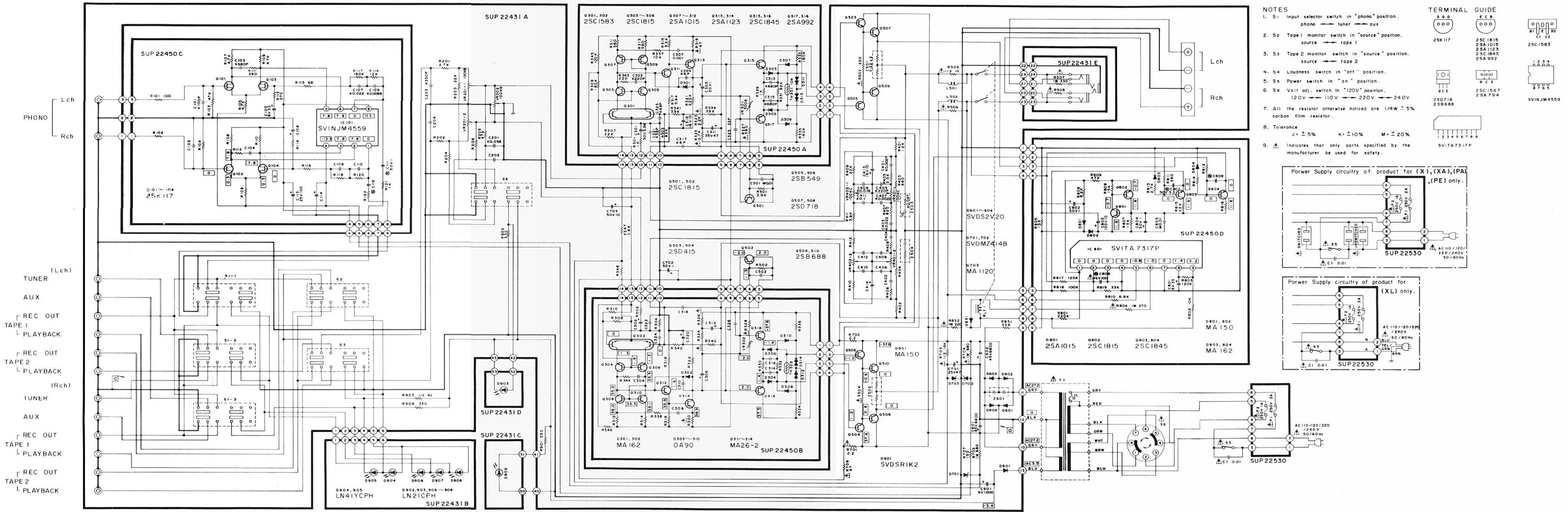


Schematic Diagram ... Model SU-C04 (This schematic diagram may be modified at any time with the development of new technology)



NOTES

- S1 Input selector switch in "phone" position.
phone — tuner — aux
- S2 Tape 1 monitor switch in "source" position.
source — tape 1
- S3 Tape 2 monitor switch in "source" position.
source — tape 2
- S4 Loudness switch in "off" position.
- S5 Power switch in "on" position.
- S6 Volt adj. switch in "120V" position.
120V — 110V — 220V — 240V

7. All the resistor otherwise noticed are 1/4W ± 5% carbon film resistor.

8. Tolerance J ± 5% K ± 10% M ± 20%

9. ⚠ Indicates that only parts specified by the manufacturer be used for safety.

