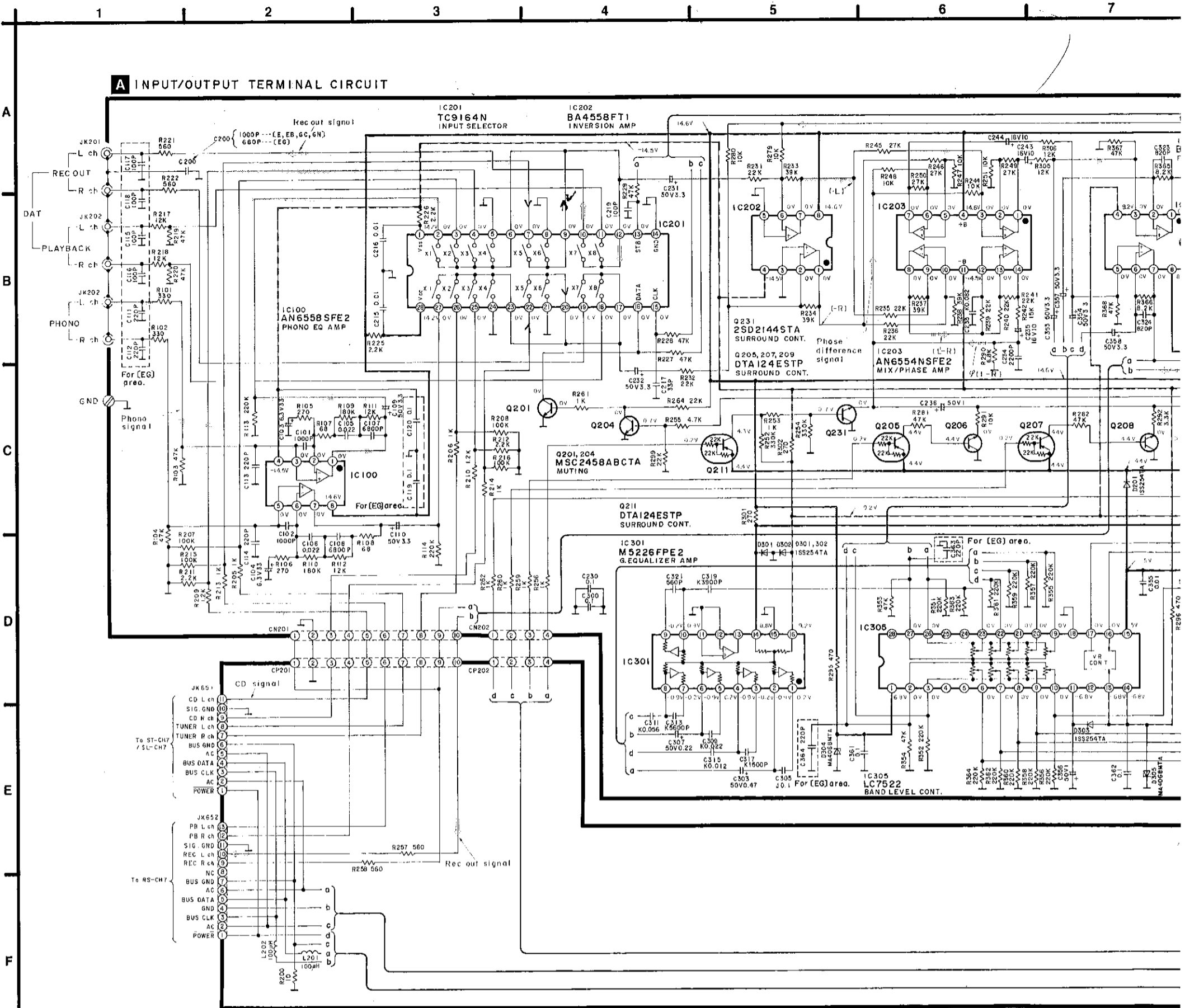
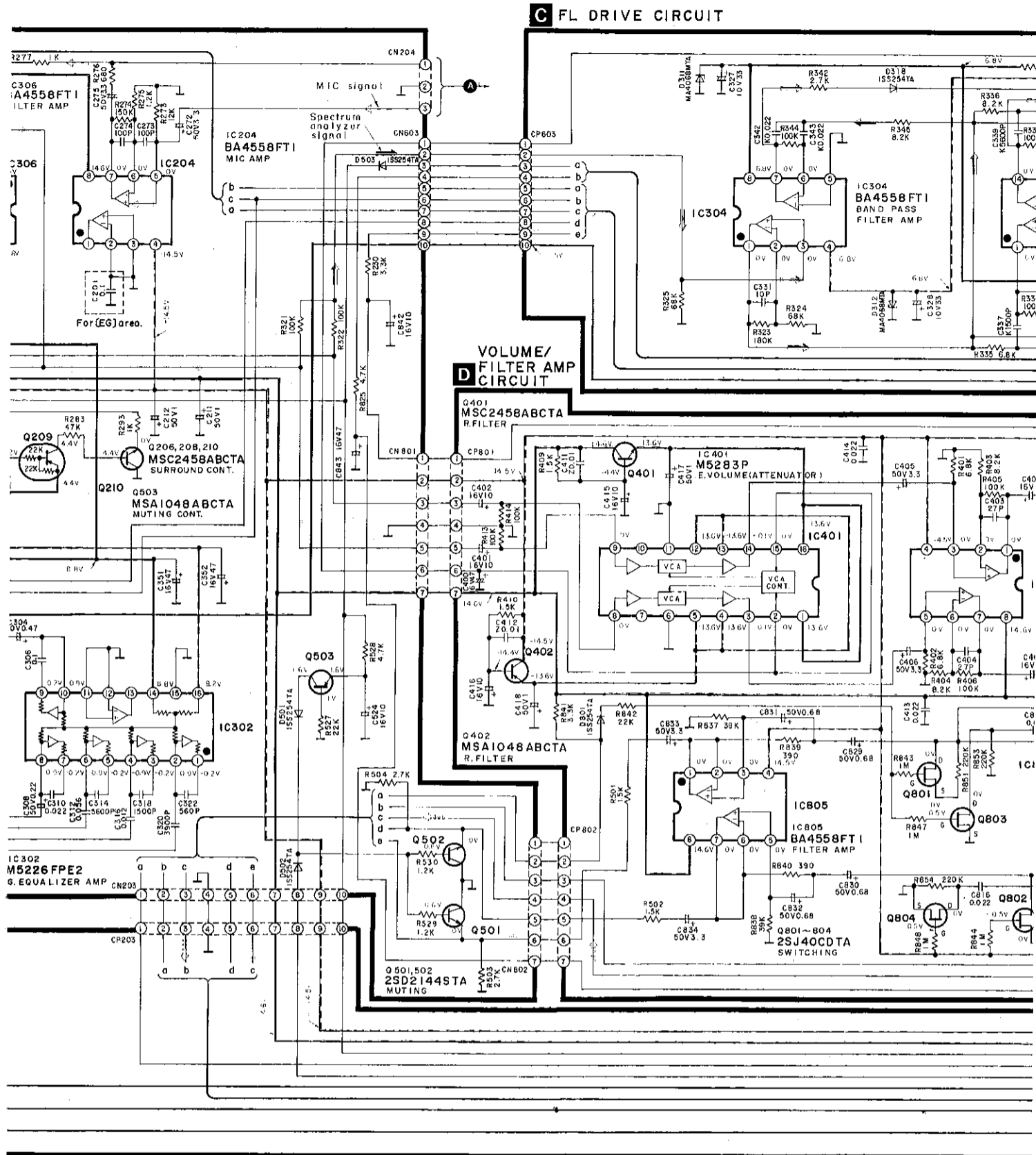
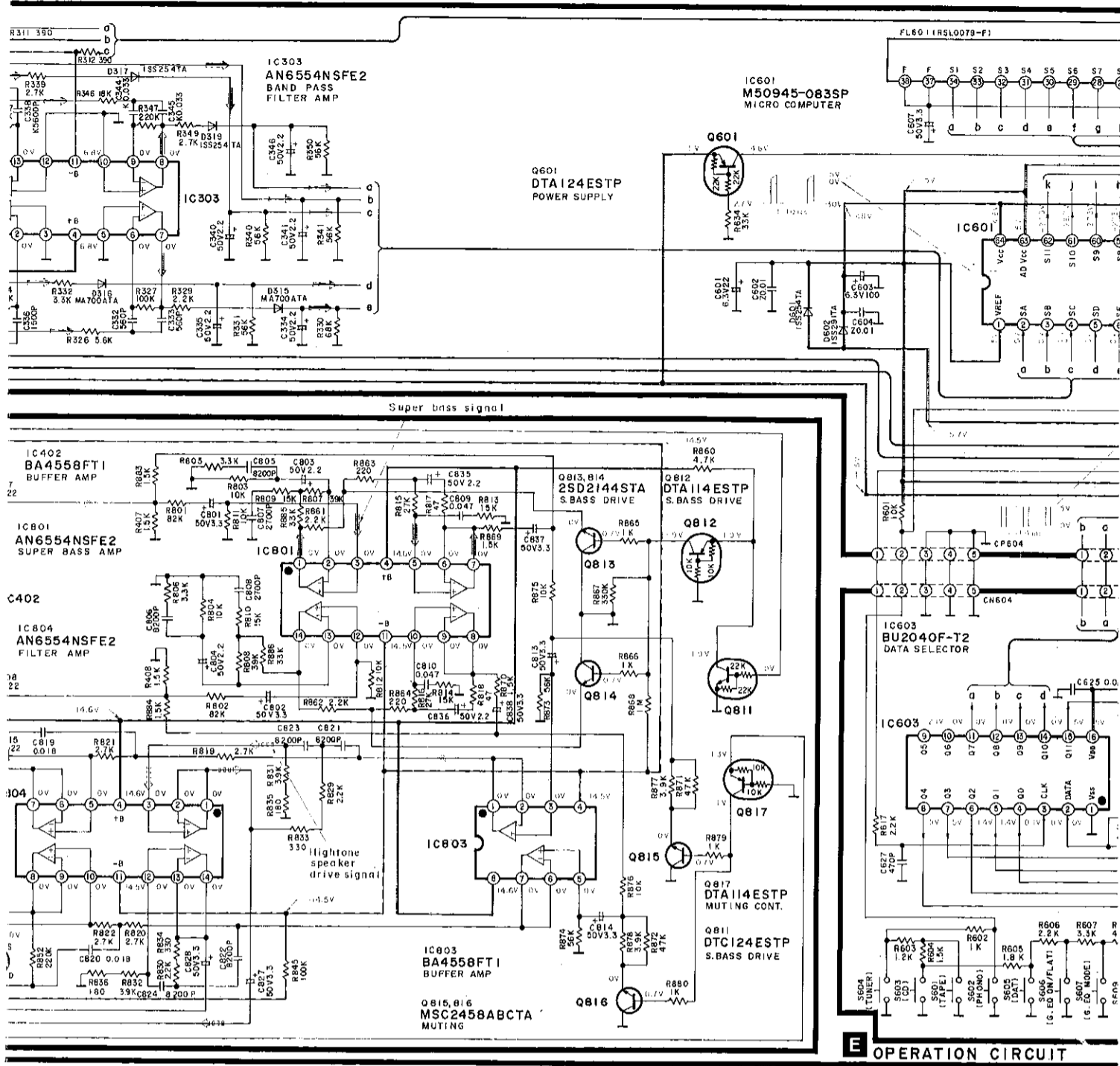


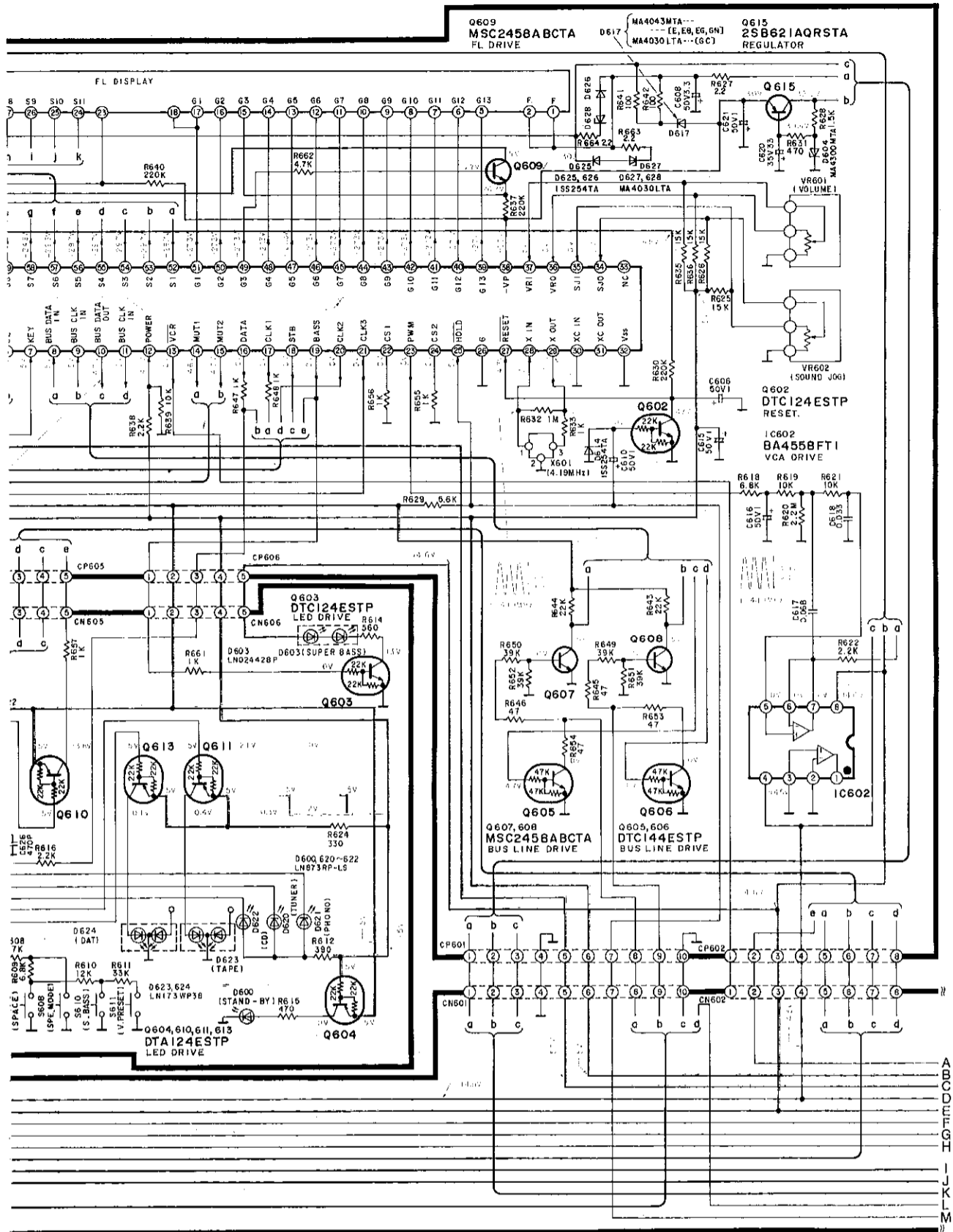
SCHEMATIC DIAGRAM (Parts list on pages 30~35.)





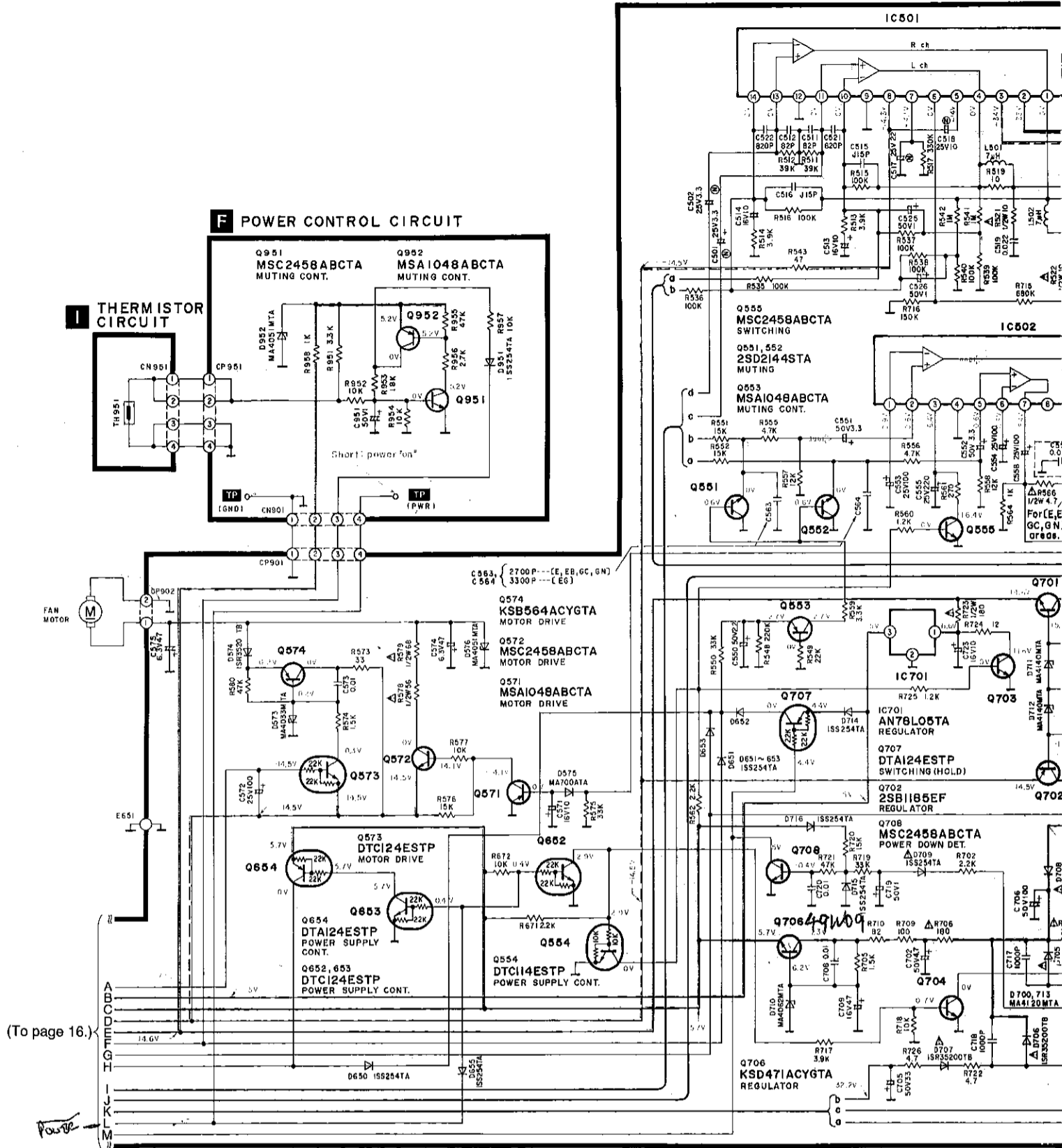


OPERATION CIRCUIT

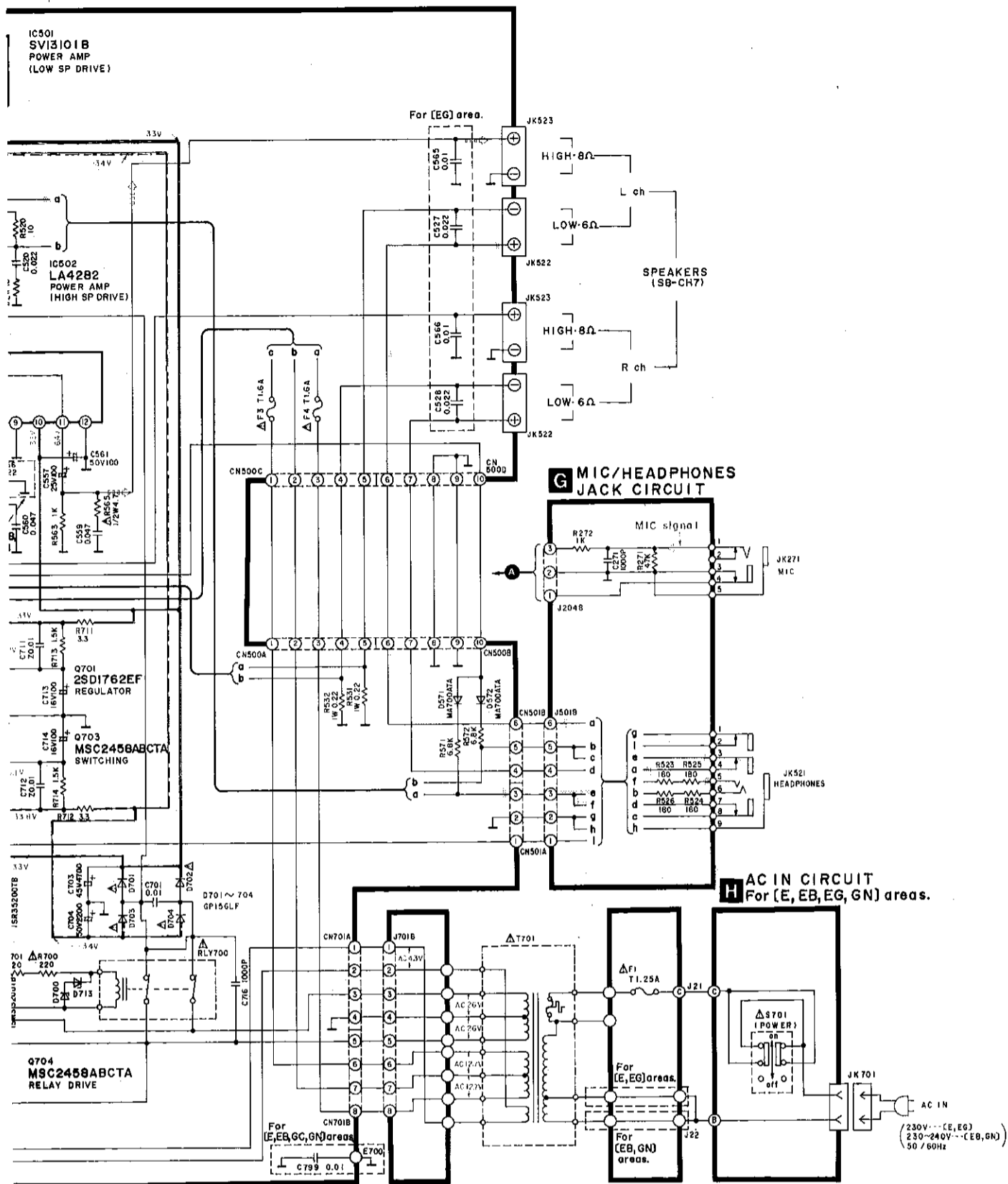


(To page 17.)

31 t



154



Notes:

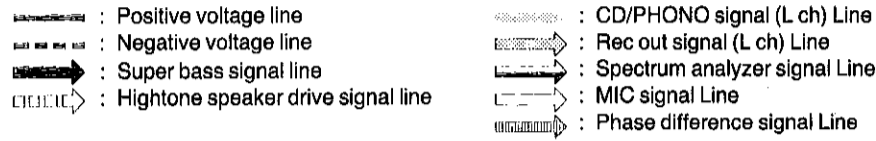
- S601~605 : Input selector switch.
 - S601: TAPE, S602: PHONO, S603: CD, S604: TUNER, S605: DAT
- S606 : Graphic EQ switch (ON/FLAT).
- S607 : Equalization mode select switch (MODE-RECALL).
- S608 : Spectrum mode select switch (-SPECTRUM MODE—DEMO).
- S609 : Ambience enhancement switch (SPACE).
- S610 : Super bass switch (SUPER BASS).
- S611 : Volume preset switch (VOL. PRESET).
- S700 : Voltage adjustment switch in "110~127 V" position. (110~127 V/220~240 V) for (GC) area only.
- S701 : Power switch in "ON" position.

●Indicated voltage values are the standard values for the unit measured by the DC electronic circuit tester (high-impedance) with the chassis taken as standard. Therefore, there may exist some errors in the voltage values, depending on the internal impedance of the DC circuit tester.

●Important safety notice:

Components identified by Δ mark have special characteristics important for safety. When replacing any of these components, use only manufacturer's specified parts.

●This schematic diagram may be modified at any time with the development of new technology.

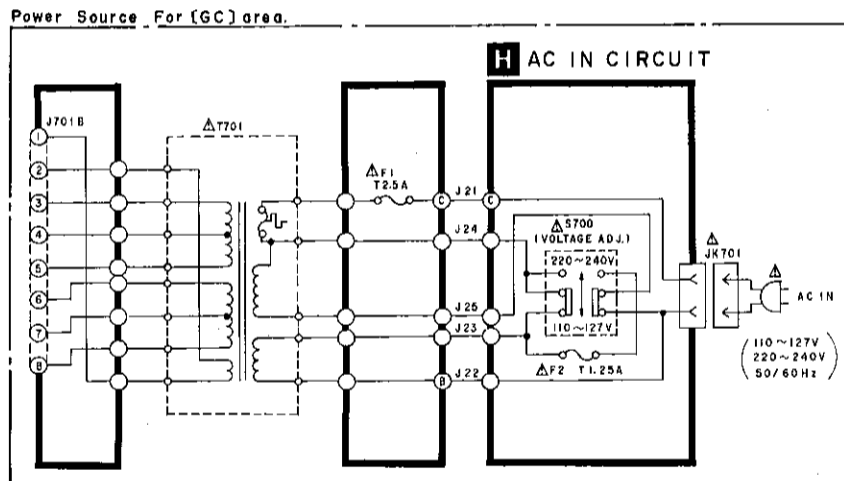


Caution!

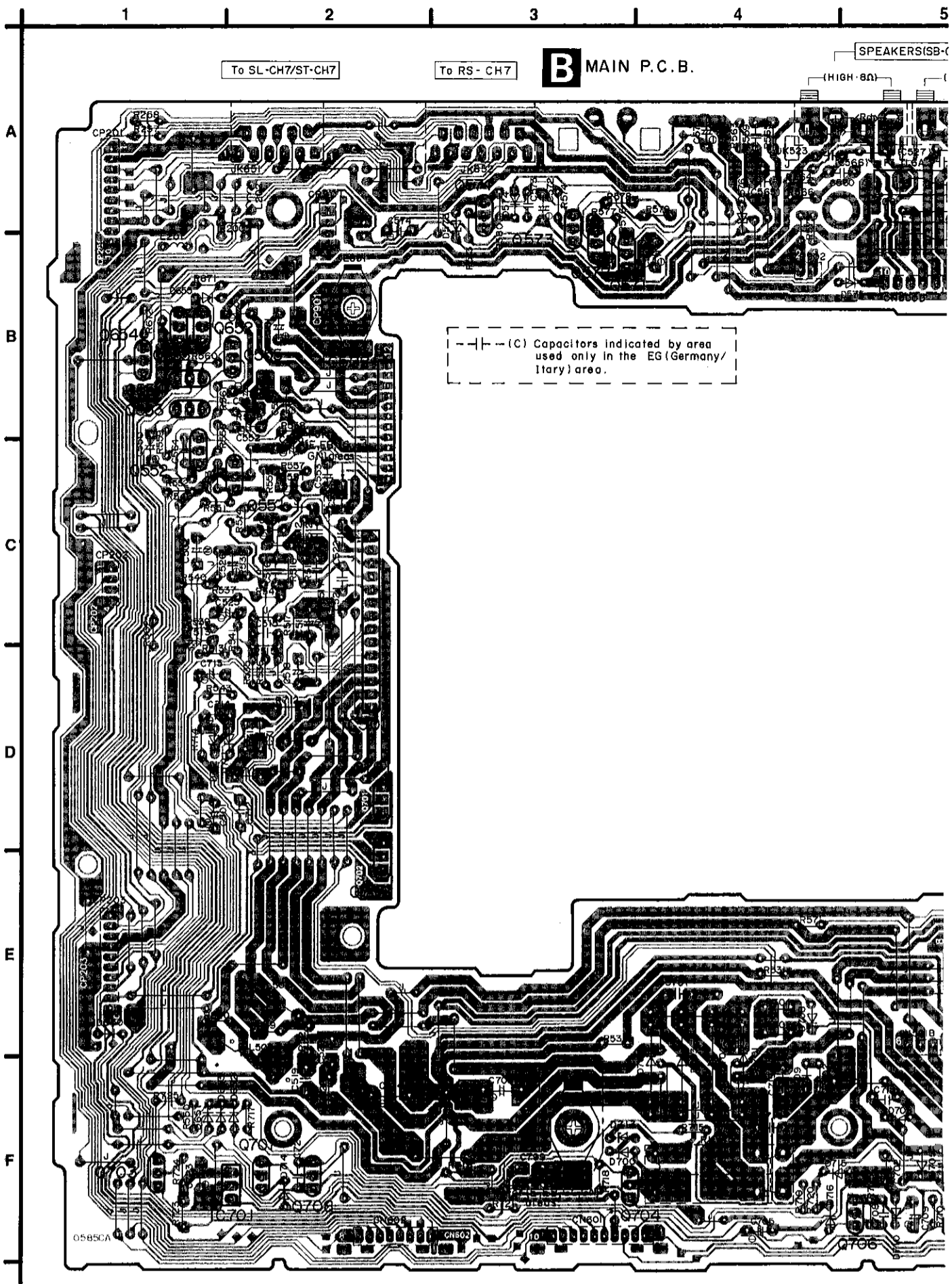
- IC and LSI are sensitive to static electricity. Secondary trouble can be prevented by taking care during repair.
- Cover the parts boxes made of plastics with aluminum foil.
- Ground the soldering iron.
- Put a conductive mat on the work table.
- Do not touch the legs of IC or LSI with the fingers directly.

●The supply part number is described alone in the replacement parts list.

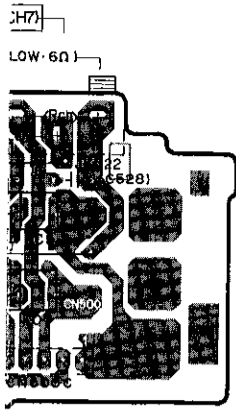
Ref No.	Production Parts No.	Supply Parts No.
IC402 IC403 IC1002	M5238P	M5238P-1



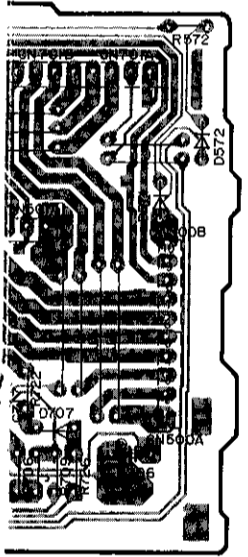
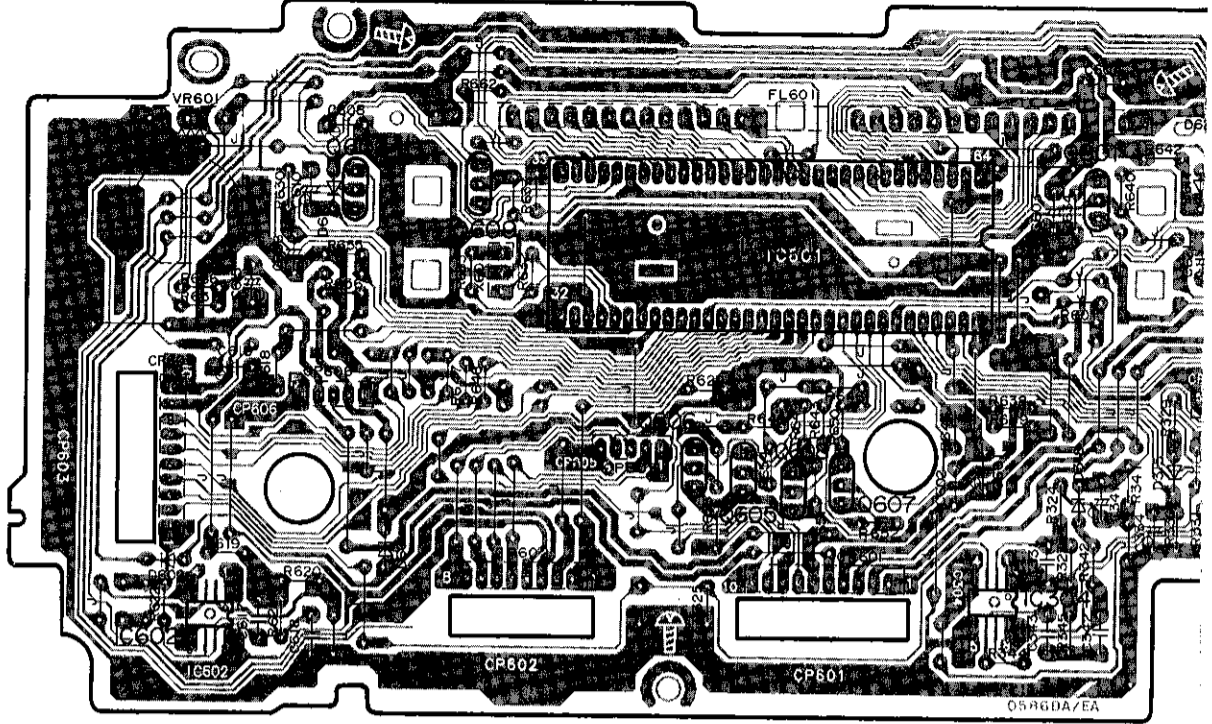
PRINTED CIRCUIT BOARDS (Parts list on pages 30~35.)



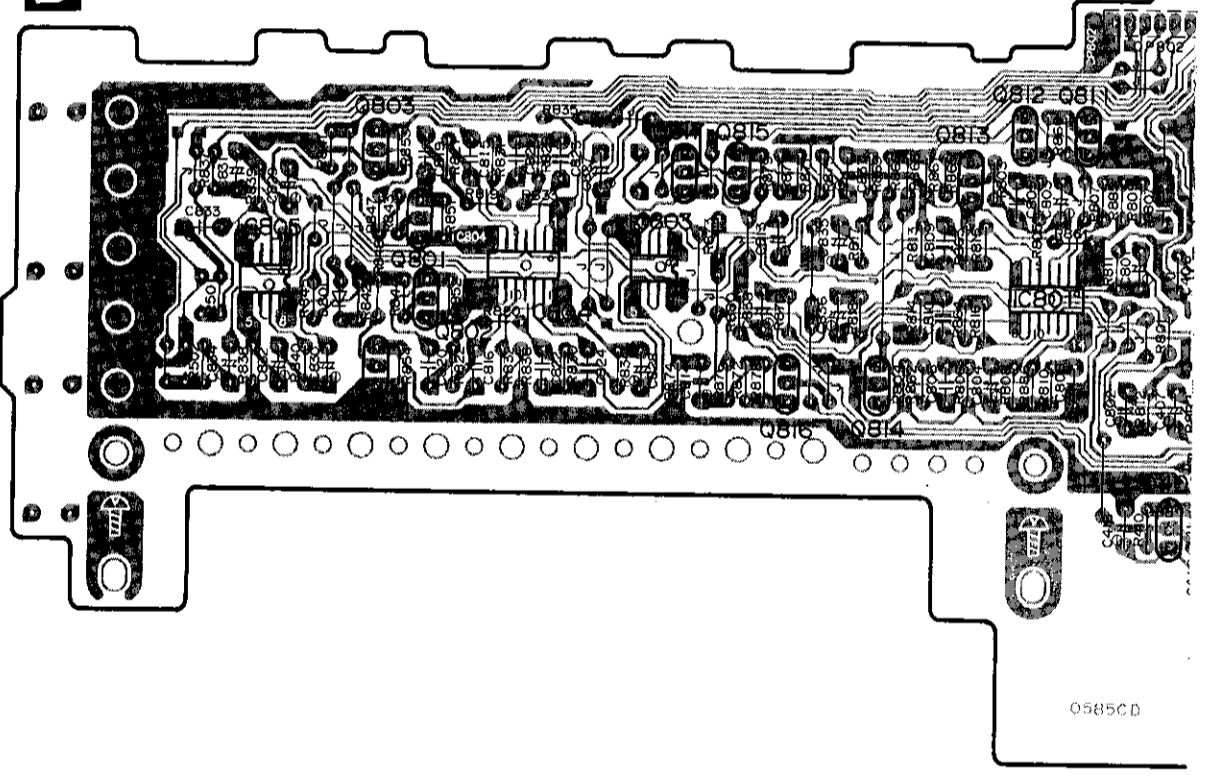
6 7 8 9 1

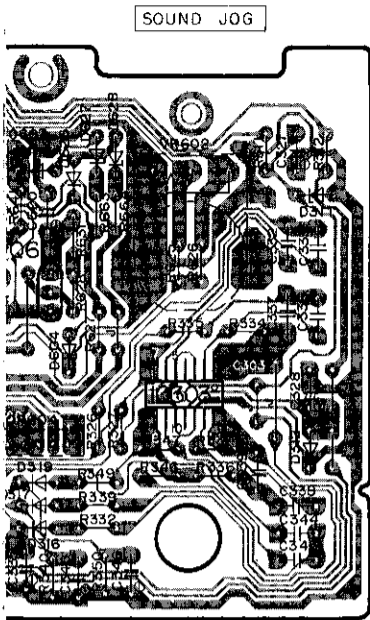


VOLUME **C** FL DRIVE P.C.B

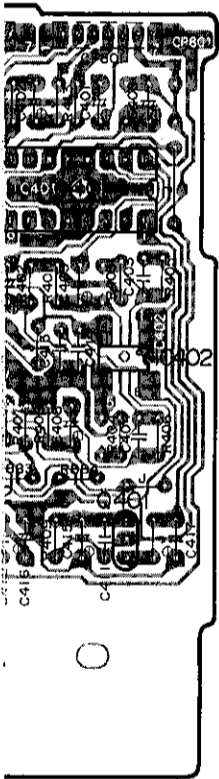
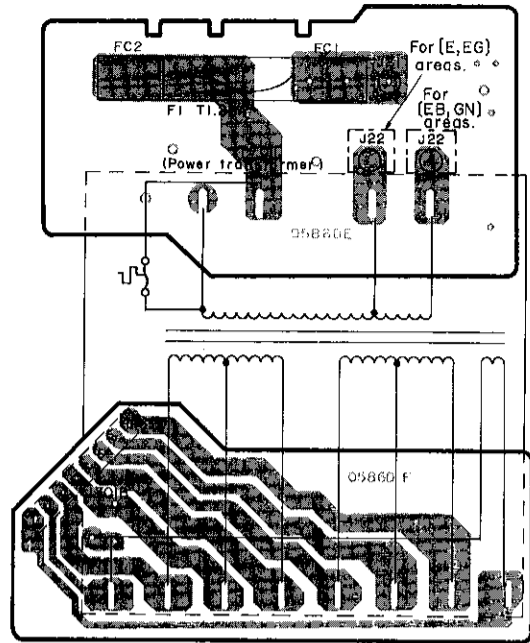
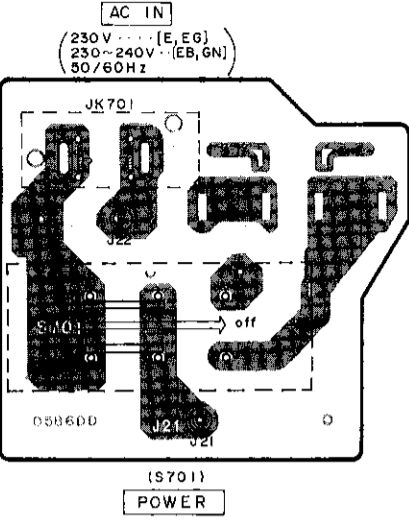


D VOLUME/FILTER AMP P.C.B.





H AC IN P.C.B.
For (E,EB,EG,GN) areas.



Power Source For (GC) area.

