

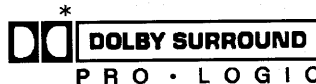
Service Manual

Stereo Integrated Amplifier

Amplifier

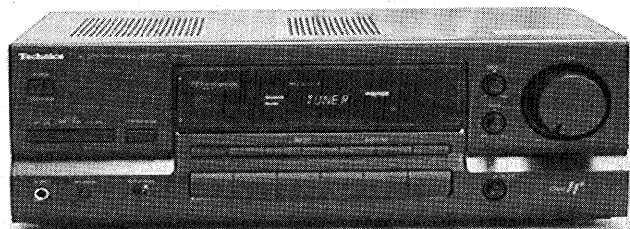
SU-G86

Simplified



Colour

(K) Black Type



Area

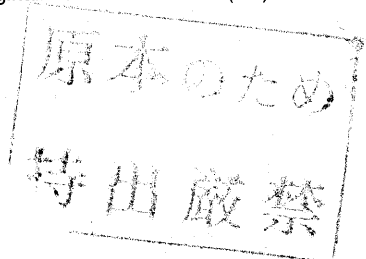
Suffix for Model No.	Area	Colour
(P)	U.S.A.	(K)

* Manufactured under license from Dolby Laboratories Licensing Corporation. Additionally licensed under one or more of the following patents: U.S. numbers 3,632,886, 3,746,792 and 3,959,590; Canadian numbers 1,004,603 and 1,037,877. "Dolby" and the double-D symbol are trade marks of Dolby Laboratories Licensing Corporation.

Please file and use this Service Manual together with the Service Manual for Model No. SU-G96 (PP) Order No. MD9603021C1.

Note : This Simplified Service Manual is provided to indicate the main difference between the original Model No. SU-G96 (PP) and the subsequent Model No. SU-G86 (P).

CHANGES



Specifications

Amplifier Section

Rated minimum sine wave RMS power output
40 Hz–20 kHz both channels driven
0.9% total harmonic distortion 130W per channel (8Ω)
1 kHz continuous power output,
both channels driven 0.9% total
harmonic distortion 135W per channel (8Ω)

Power output at the Dolby Pro Logic operation

0.9% at 1 kHz,
Front 2X100 W (8Ω)
Center 100 W (8Ω)
Surround (total impedance) 100 W (8Ω)

Amplifier Section

Rated minimum sine wave RMS power output
40 Hz–20 kHz both channels driven
0.9% total harmonic distortion 120W per channel (8Ω)
1 kHz continuous power output,
both channels driven 0.9% total
harmonic distortion 125W per channel (8Ω)


Power output at the Dolby Pro Logic operation




0.9% at 1 kHz,
Front 2X110 W (8Ω)
Center 110 W (8Ω)
Surround (total impedance) 110 W (8Ω)

WARNING

This service information is designed for experienced repair technicians only and is not designed for use by the general public. It does not contain warnings or cautions to advise non-technical individuals of potential dangers in attempting to service a product. Products powered by electricity should be serviced or repaired only by experienced professional technicians. Any attempt to service or repair the product or products dealt with in this service information by anyone else could result in serious injury or death.

Change In Replacement Parts List

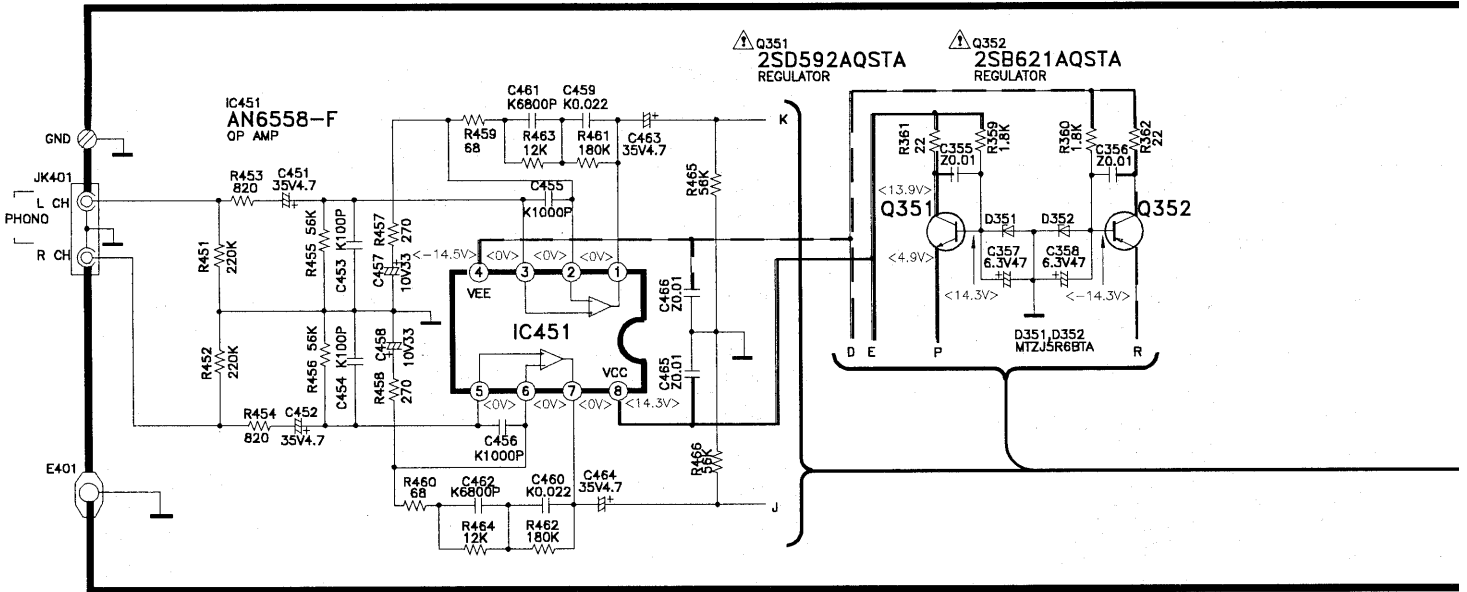
- Notes: * Mentioned in this parts list is only those different from Model No. SU-G96PP-K.
 * Important safety notice:
 Components identified by  mark have special characteristics important for safety.
 Furthermore, special parts which have purposes of fire-retardant (resistors), high-quality sound (capacitors), low noise (resistors), etc are used.
 When replacing any of these components, be sure to use only manufacturer's specified parts shown in the parts list .
 * [M] Indicates in the Remarks columns indicates parts supplied by MESA.

Ref. No.	Description	Change of Parts Number			Remarks
		SU-G96PP-K		SU-G86P-K	
CABINET AND CHASSIS					
2	REAR PANEL	RGR0237A-A	RGR0237A-B	[M]	Changed
15	SHORT PIN	SJP9205-2T	RJR0180	[M]	Changed
16	FRONT PANEL ASS'Y	RFKGSUG96PPK	RFKGSUG86PK	[M]	Changed
CAPACITORS					
C611	0.047 50V	ECQV1H473JZ3	ECQV1H473JM3	[M]	Changed
C612	0.047 50V	ECQV1H473JZ3	ECQV1H473JM3	[M]	Changed
C661	0.047 50V	ECQV1H473JZ3	ECQV1H473JM3	[M]	Changed
C662	0.047 50V	ECQV1H473JZ3	ECQV1H473JM3	[M]	Changed
C705	3300 50V	ECEA1HM332EV	ECA1HM332E	[M] 	Changed
C706	3300 50V	ECEA1HM332EV	ECA1HM332E	[M] 	Changed
C731	1 50V	ECEA1HKN010B	—		Deleted
C753	1000 25V	ECA1EM102B	ECA1EM102EV	[M]	Changed
C755	47 16V	ECEA1CU470B	ECEA1CU470BV	[M]	Changed
C757	10 16V	ECEA1CU100B	ECA1CM100B	[M]	Changed
C901	1000 6.3V	ECEA0JU102B	ECA0JM102B	[M]	Changed
C902	0.1 50V	—	ECBT1H104ZF5	[M]	Added
C904	1000 6.3V	ECEA0JU102B	ECA0JM102B	[M]	Changed
CONNECTORS					
CP771	CONNECTOR	SJT3213	RJP2G4YA	[M]	Changed
DIODES					
D731	DIODE	MTZJ24DTA	—		Deleted
D732	DIODE	MTZJ30DTA	—		Deleted
INTERGRATED CIRCUITS					
IC451	OP AMP IC	AN6558-F	AN6558F	[M]	Changed
COILS & TRANSFORMERS					
L601	CHOKE COIL	RLQYR73M	RLQYR73MW-E	[M]	Changed
L602	CHOKE COIL	RLQYR73M	RLQYR73MW-E	[M]	Changed
L651	CHOKE COIL	RLQYR73M	RLQYR73MW-E	[M]	Changed
L652	CHOKE COIL	RLQYR73M	RLQYR73MW-E	[M]	Changed
PACKING MATERIALS					
P1	PACKING CASE	RPG2779	RPG3505	[M]	Changed

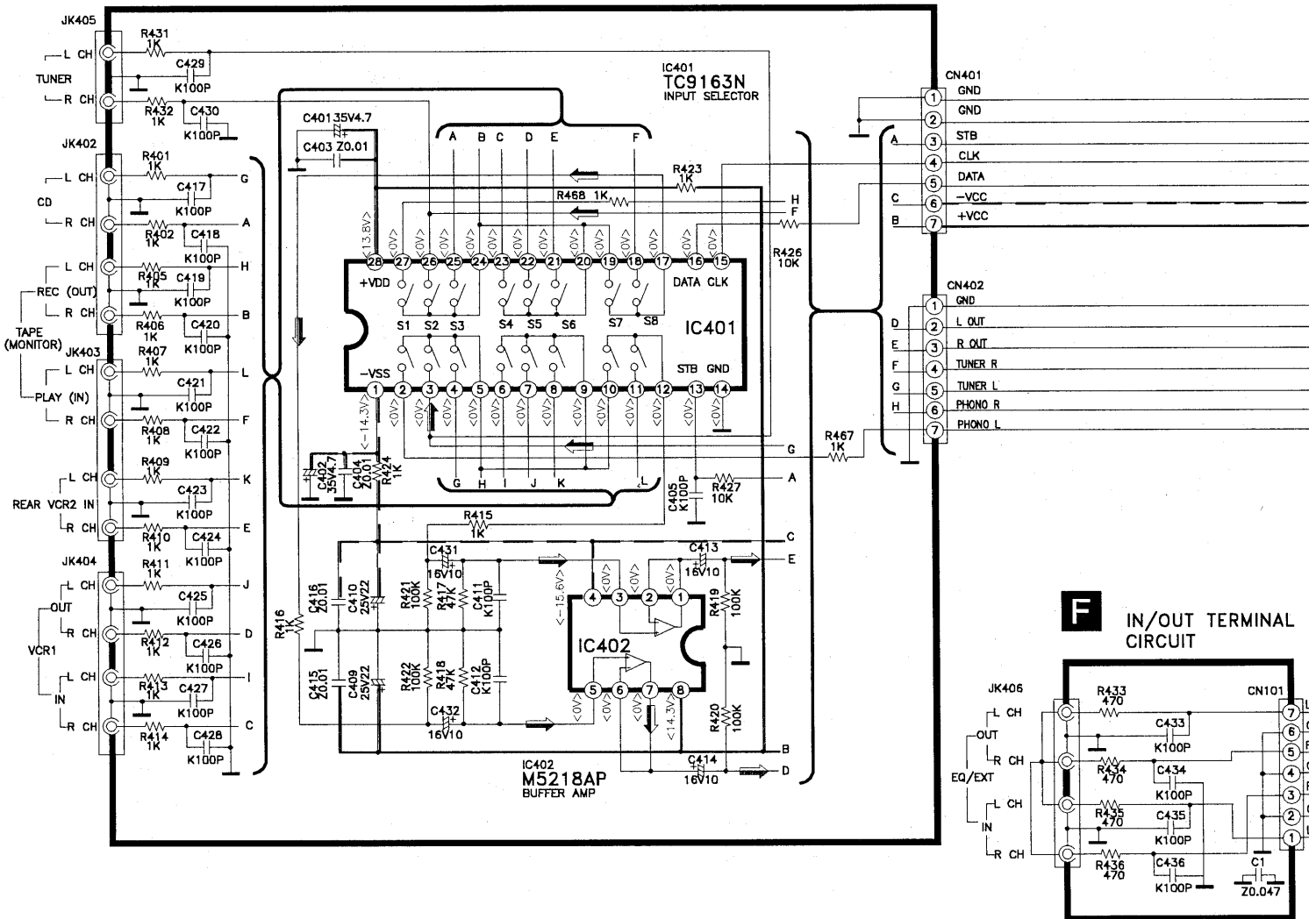
Ref. No.	Description	Change of Parts Number		Remarks
		SU-G96PP-K	SU-G86P-K	
TRANSISTORS				
Q351	TRANSISTOR	2SD592ARTA	2SD592AQSTA [M] ⚠	Changed
Q352	TRANSISTOR	2SB621ARTA	2SB621AQSTA [M] ⚠	Changed
Q581	TRANSISTOR	2SA1309ARTA	2SA1309AQSTA [M]	Changed
Q582	TRANSISTOR	2SA1309ARTA	2SA1309AQSTA [M]	Changed
Q583	TRANSISTOR	2SC3311ARTA	2SC3311AQSTA [M]	Changed
Q584	TRANSISTOR	2SC3311ARTA	2SC3311AQSTA [M]	Changed
Q585	TRANSISTOR	2SA1309ARTA	2SA1309AQSTA [M]	Changed
Q601	TRANSISTOR	UN4119	UN4119TA [M]	Changed
Q651	TRANSISTOR	UN4119	UN4119TA [M]	Changed
Q703	TRANSISTOR	2SC3311ARTA	2SC3311AQSTA [M] ⚠	Changed
Q704	TRANSISTOR	2SC3311ARTA	2SC3311AQSTA [M] ⚠	Changed
Q705	TRANSISTOR	2SC3311ARTA	2SC3311AQSTA [M] ⚠	Changed
Q707	TRANSISTOR	2SB621ARTA	2SB621AQSTA [M] ⚠	Changed
Q731	TRANSISTOR	2SB621ARTA	—	Deleted
Q732	TRANSISTOR	2SA1309ARTA	—	Deleted
Q733	TRANSISTOR	2SD592ARTA	—	Deleted
Q734	TRANSISTOR	2SA992E	—	Deleted
Q771	TRANSISTOR	2SA1309ARTA	2SA1309AQSTA [M]	Changed
Q772	TRANSISTOR	2SA1309ARTA	2SA1309AQSTA [M]	Changed
Q773	TRANSISTOR	2SB621ARTA	2SB621AQSTA [M] ⚠	Changed
Q774	TRANSISTOR	2SA1309ARTA	2SA1309AQSTA [M]	Changed
Q775	TRANSISTOR	2SA1309ARTA	2SA1309AQSTA [M]	Changed
Q776	TRANSISTOR	2SA1309ARTA	2SA1309AQSTA [M]	Changed
Q802	TRANSISTOR	2SK301RSTA	2SK301QTA [M]	Changed
RESISTORS				
R629	150 1/4W	—	ERD25FVJ151T [M]	Added
R630	120 1/4W	—	ERD25FVJ121T [M]	Added
R731	18 1/4W	ERD25FVJ180T	—	Deleted
R732	27K 1/4W	ERDS2TJ273T	—	Deleted
R733	47K 1/4W	ERDS2TJ473T	—	Deleted
R734	8.2K 1/4W	ERDS2TJ822T	—	Deleted
R735	2.2K 1/4W	ERDS2TJ222T	—	Deleted
R736	220 1/4W	ERD25FVJ221T	—	Deleted
R737	100K 1/4W	ERDS2TJ104T	—	Deleted
R738	18K 1/4W	ERDS2TJ183T	—	Deleted
R739	10K 1/4W	ERDS2TJ103T	—	Deleted
R740	39K 1/4W	ERDS2TJ393T	—	Deleted
R741	18 1/4W	ERD25FVJ180T	—	Deleted
R742	180 1/4W	ERD25FJ181T	—	Deleted
R743	1K 1/4W	ERDS2TJ102T	—	Deleted
R744	56K 1/4W	ERDS2TJ563T	—	Deleted
R745	120K 1/4W	ERDS2TJ124T	—	Deleted

Schematic Diagram

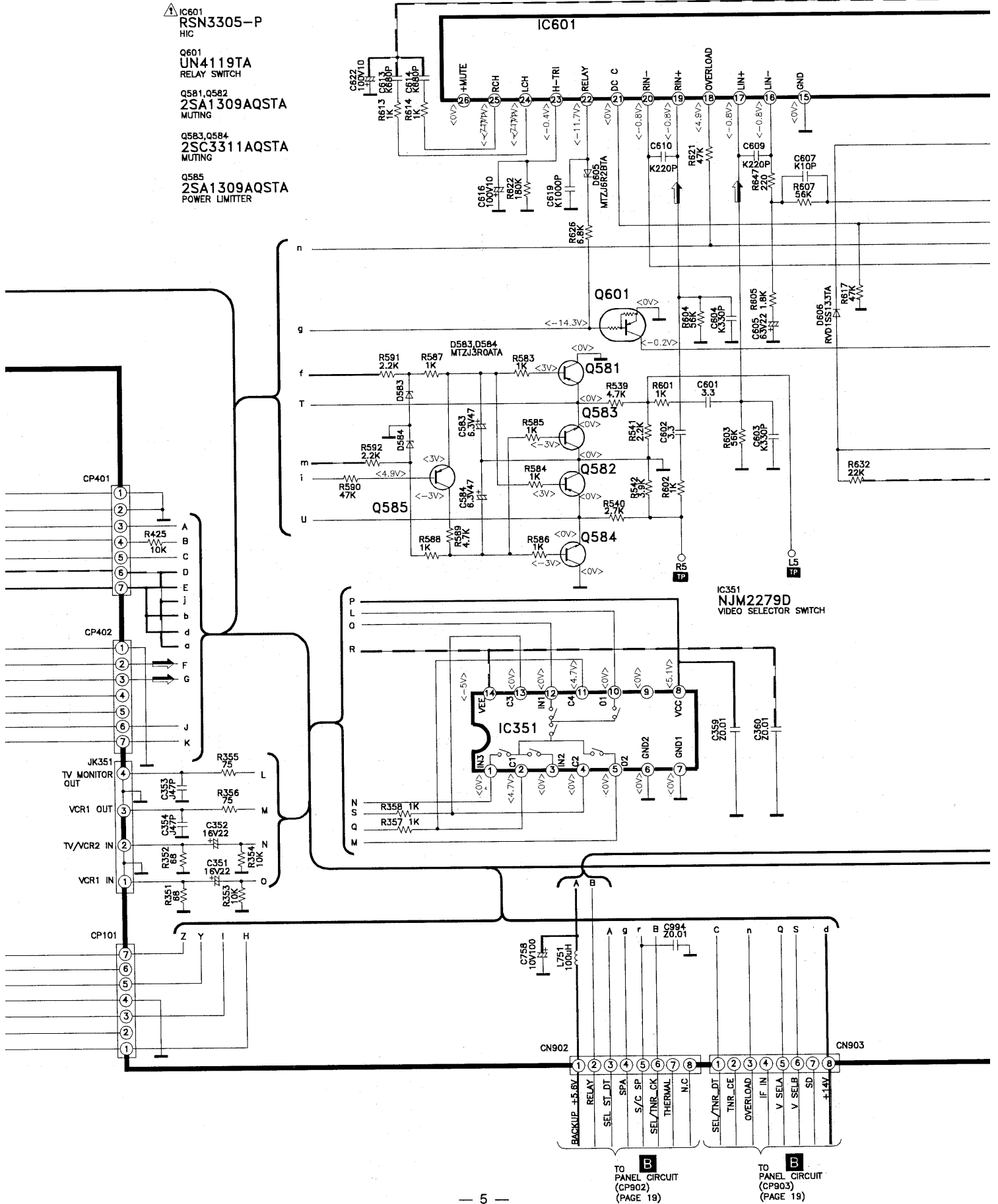
A MAIN CIRCUIT



H IN/OUT TERMINAL CIRCUIT

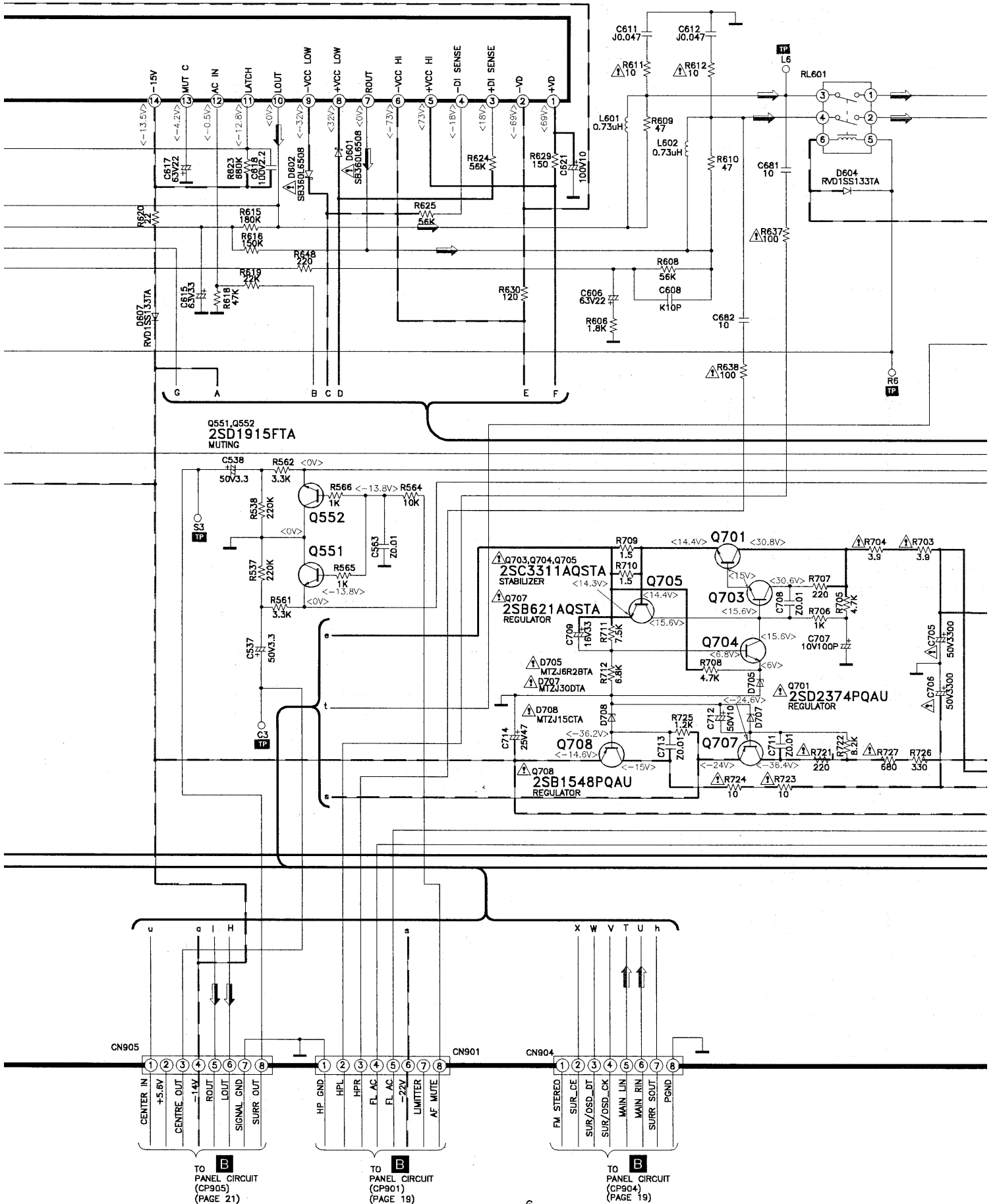


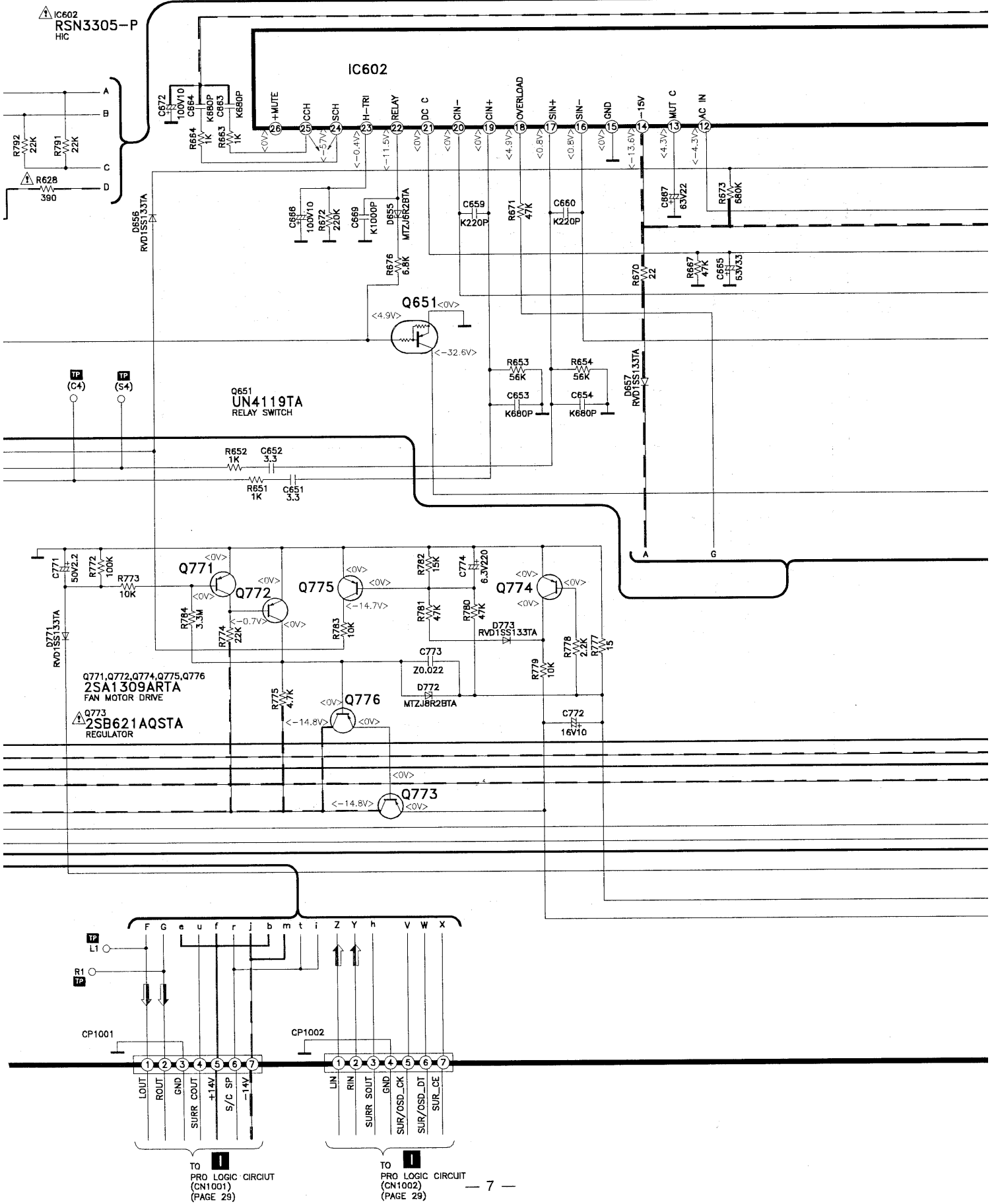
- ① IC601
RSN3305-P
HIC
- Q601
UN4119TA
RELAY SWITCH
- Q581, Q582
2SA1309AQSTA
MUTING
- Q583, Q584
2SC3311AQSTA
MUTING
- Q585
2SA1309AQSTA
POWER LIMITER

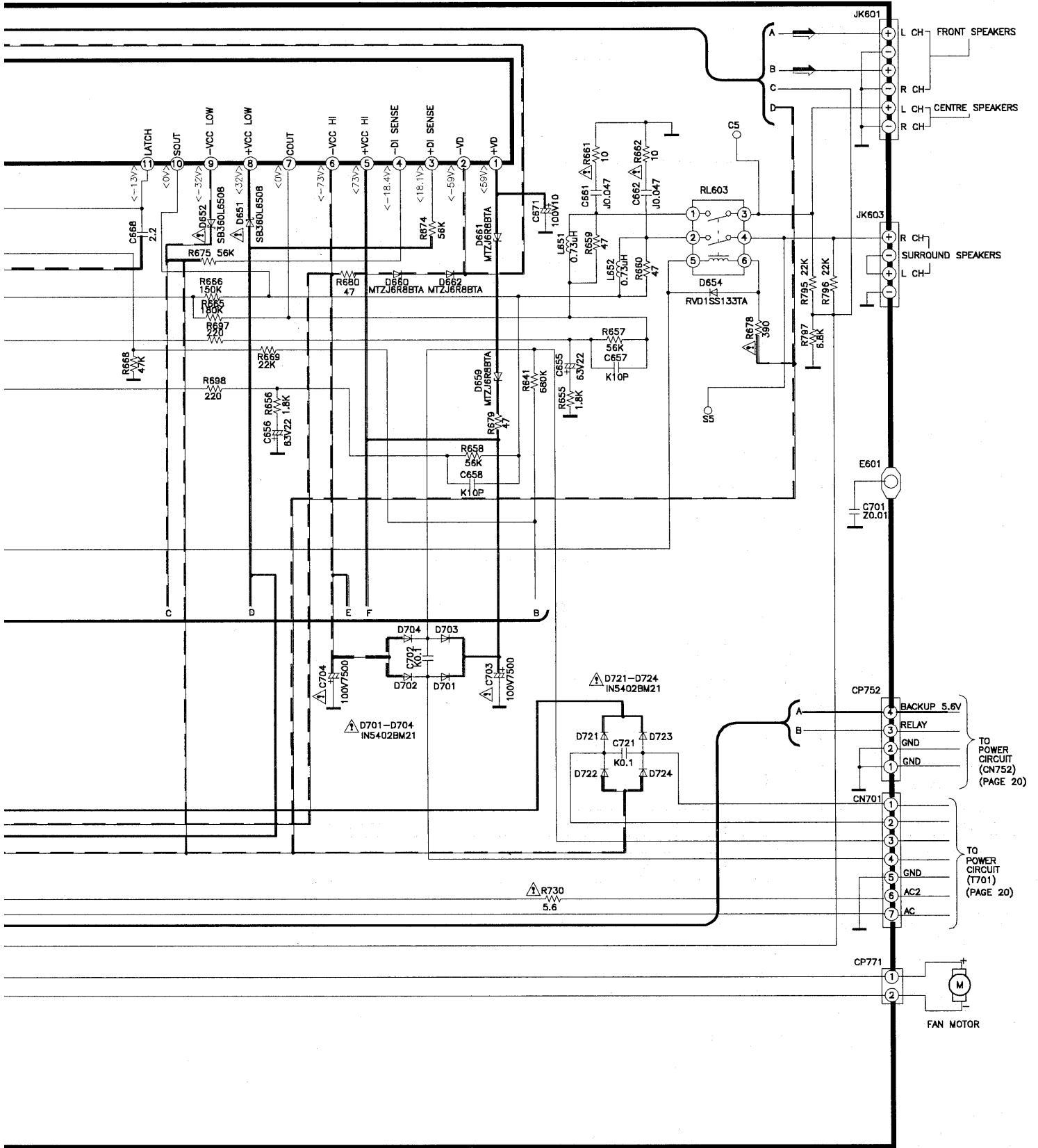


TO PANEL CIRCUIT (CP902) (PAGE 19)

TO PANEL CIRCUIT (CP903) (PAGE 19)

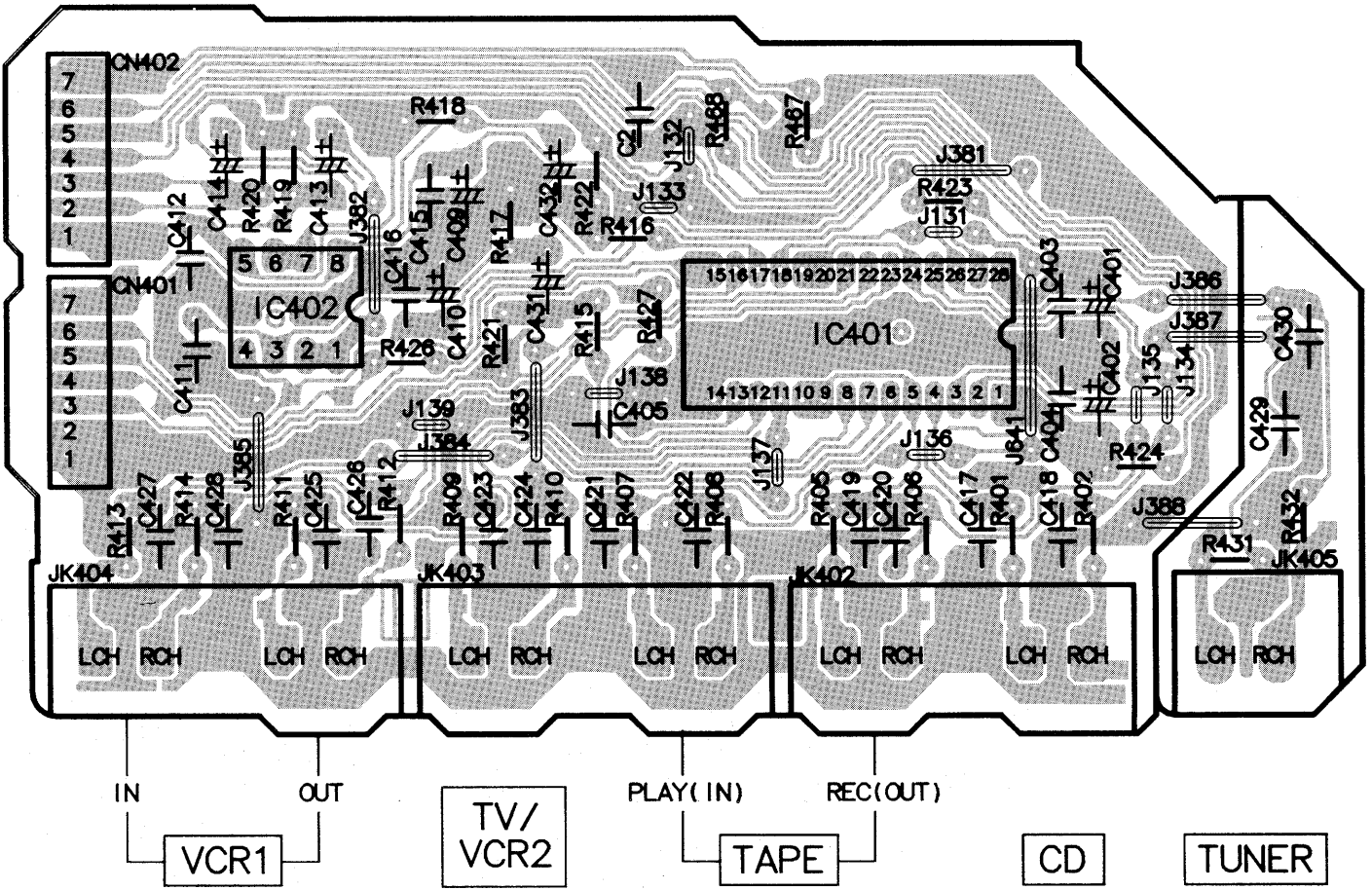




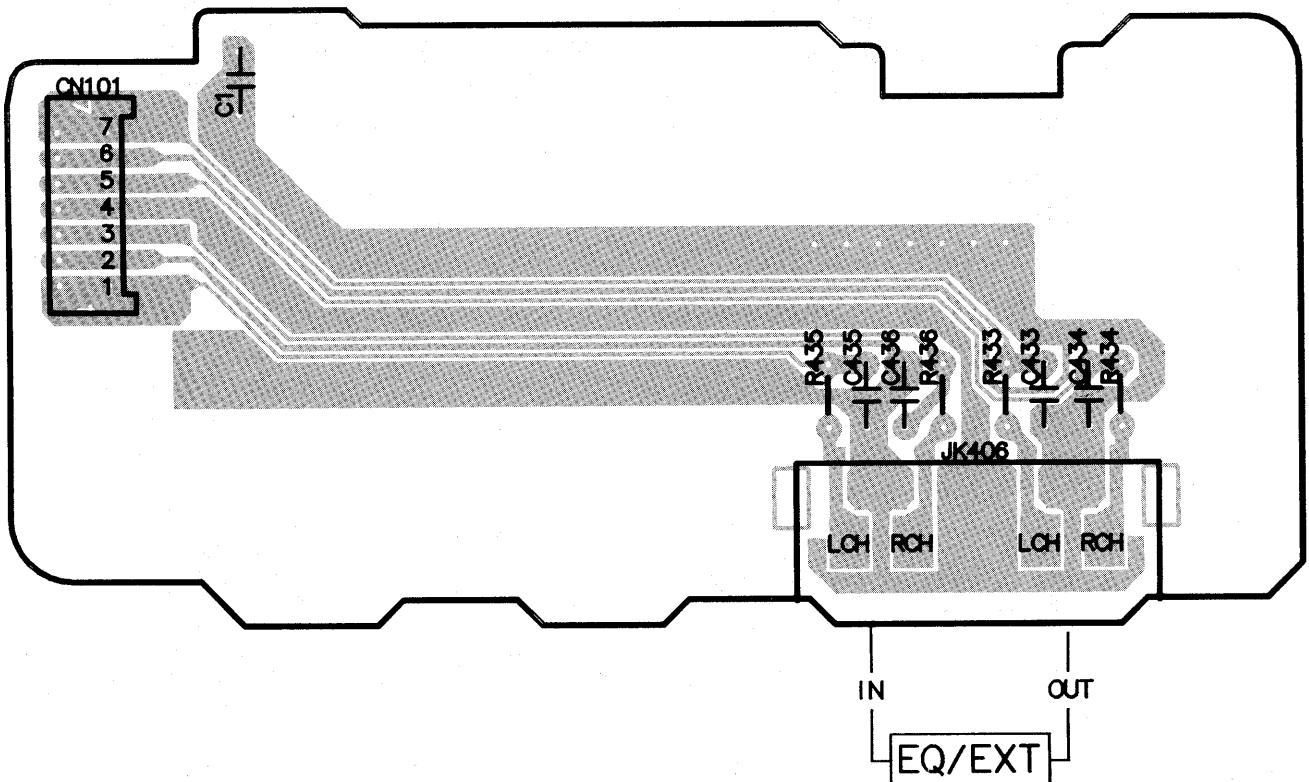


■ Printed Circuit Board

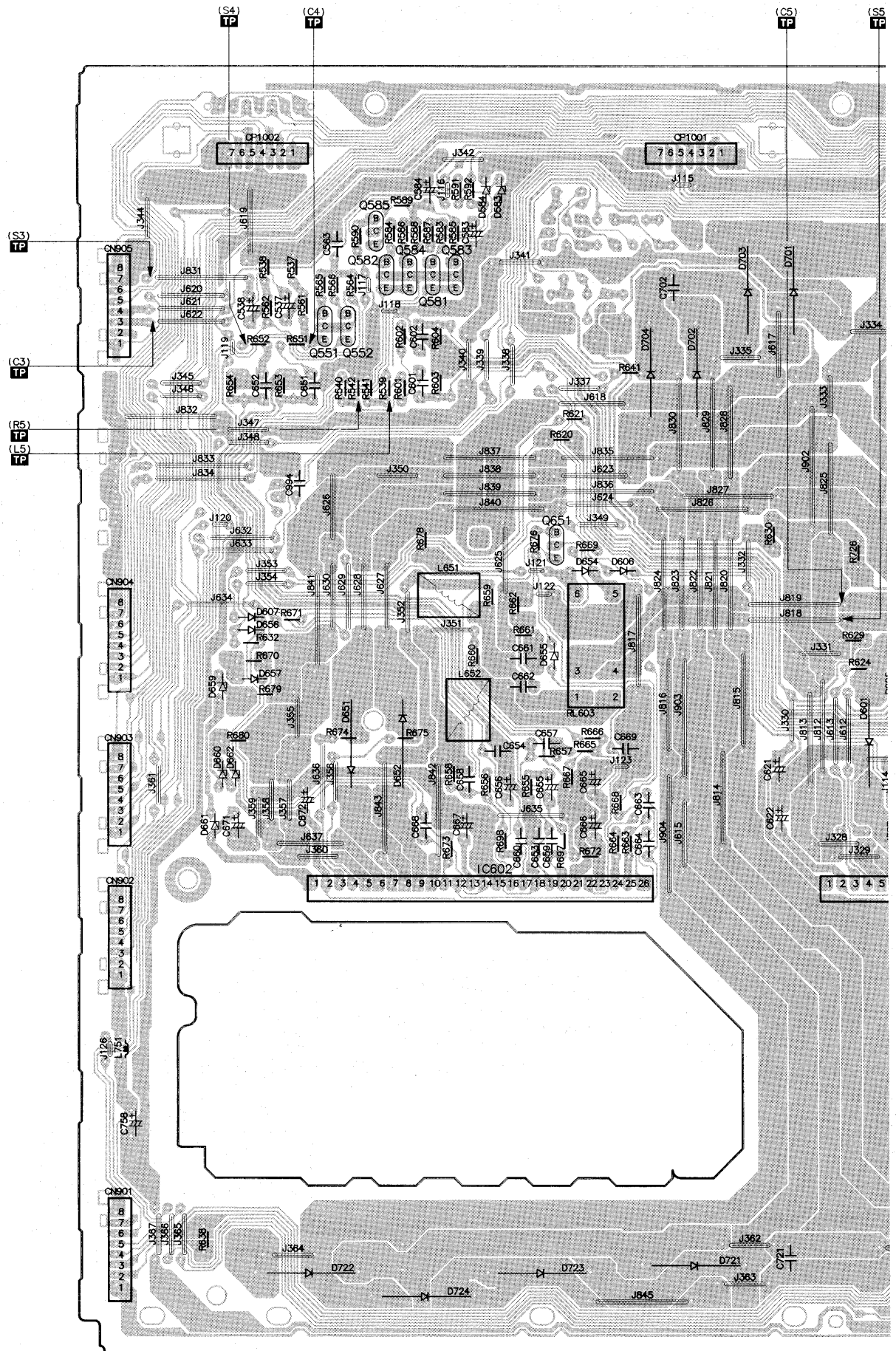
■ IN/OUT TERMINAL P.C.B. (REP2332D-M)

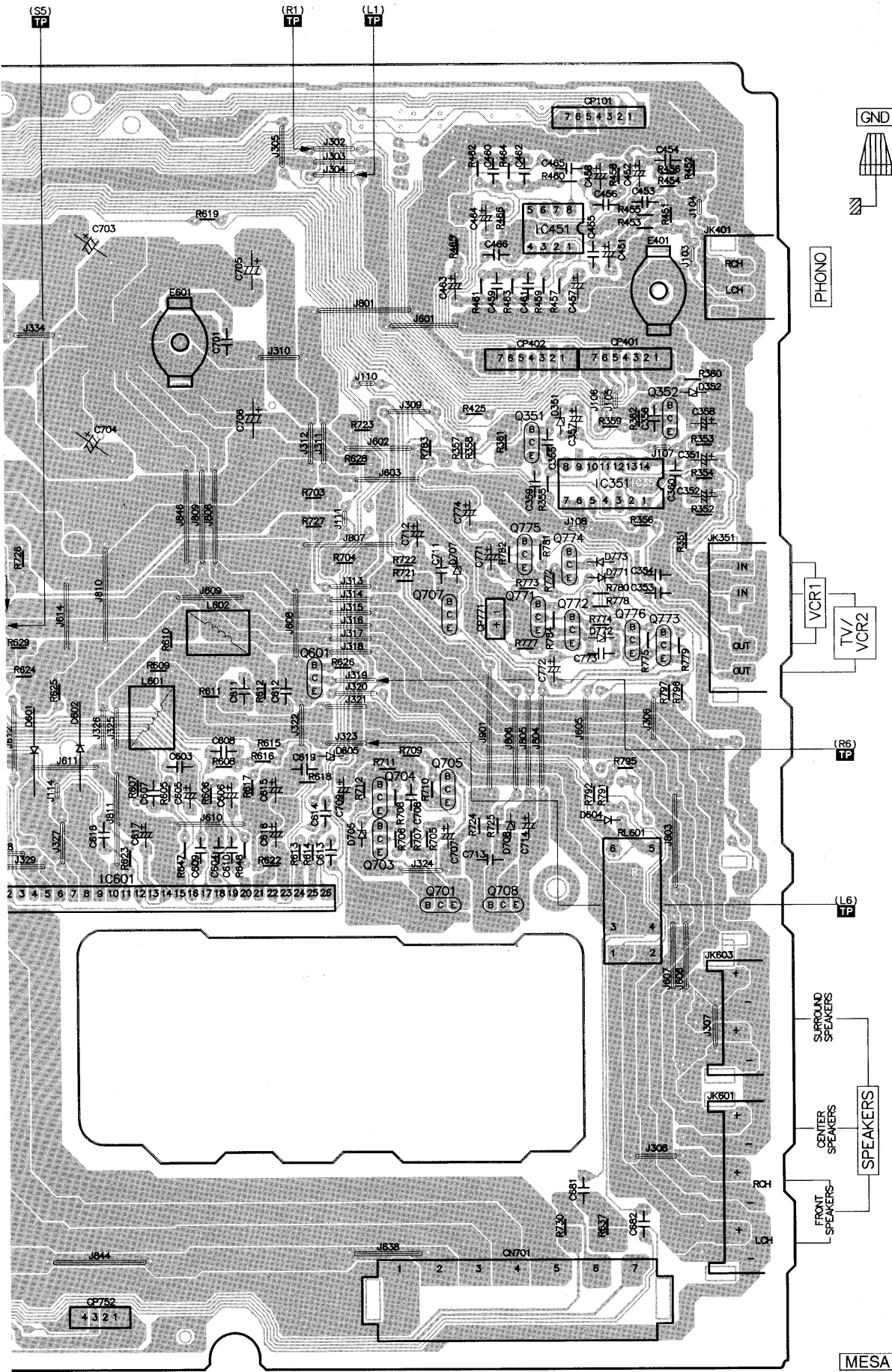


■ IN/OUT TERMINAL P.C.B. (REP2332D-M)



A MAIN P.C.B. (REP2332D-M)





MESA Printed in Singapore G970602000P/S/T