

**PARTS LIST**  
**LISTE PIECES DETACHEES**  
**ERSATZTEILLISTE**  
**LISTA PARTI DI RICAMBIO**  
**LISTA DE PIEZAS DE REPUESTO**



**THOMSON**  
**A3380**  
**Chassis CRKD2553**

#### MODULES

MAIN	MAIN	R	55212470
AMPL	AMPLI	R	55212490
KDB	DISPLAY/CONTROL	R	55356820
POWE	POWER	R	55212500
SVB	CD CONTROL	R	55151850



IC001,002 (SVB)	FAN8082	△	55116380
IC002 (MAIN)	LA1837		20884080
IC003	LC72131		20884060
IC004	BU1924F FLAT		55048400
IC300	AN7348K		20693340
IC301	TDA7439		35096300
IC302	BA7755A		10214460
IC501	LM4766T		55056260
IC601	BA4558F FLAT		20976940
IC701	UPD780206GF-123-3BA FLAT		55265310
IC702	HCF4094BM1 FLAT		55069960
IR701	GP1U287R		20852030



ICP01	PSR-5		55173540
PI001,002,005,006	RPI-576		55098050
PI003	RPI-574		20586840
PI004	GP2S28		20556130
Q001	KTC3880 O SMD		55050950
Q002,003,004,006,501,502,504,505,511,514,518,519,602,701,703,704,710,802,803,805,806	KTC3875GR SMD		20779850
Q005,601	KTA1298Y SMD		55050930
Q305,401,702,801	KTC3203Y/KTC2120Y		20538220
Q327,801,804	2SA950Y		20534440
Q328,331	KRC107S SMD		55051240

Q330	KTA1504GR SMD		20779750
Q503,516	KTA1504Y		20970480
Q510	KTA1273Y/KTA966Y		10448970
Q513A	2SD2012		10221820
Q517	2SK117Y		35095520
Q601L,601R	KTC3198GR		20508070



D001,002,010,011,501,503,703,704,705,706,707,708,709,710,711,717,718,801,802	1N4148		44009209
D001,004,005	1N5232B 5.6V		20414280
D002	1N5235B		20526990
D003	1N5239B		20454630
D003,004,802,803,804,805	1N4002		11070780
D402,513	BZX55C7V5		80444150
D502	BZX85C12		70437720
D505,506,507,508	1N5402		55041640
D509,510,511,512,515	1N4001		16008160
D514	BZX85C30		30948640
D701	BZX55C6V2 500MW		20475410
D716	L314-SRD LED		20971500



X001	7M2HZ		10281350
X002	4M332HZ		55050710
Y001,002,003	10M7HZ		20702430
Y701	4M19HZ		20776150



L801			70182000
SVC001			55070600
TF001	10M7HZ		55070590
TF002,003	14K0HZ		55070620
TF005	455K0HZ		55070610



EN701			55064450
RV001,340	4K7 OHM		10368440
RV341	200RO OHM		20498490



R003,004	2R2 OHM 5% 0,25W	△	15009870
----------	------------------	---	----------



C801,802	4N7F 20% 250V	△	20677520
----------	---------------	---	----------



POWER		△	55267240
STAND-BY		△	55272830

**R : RECYCLED PART**  
**: PIECE RECYCLEE**  
**: AUSTAUSCHTEILE**  
**: RICAMBIO RICICLATO**  
**: MODULO REPROCESADO**

For any requests, please contact THOMSON multimedia after sales service area  
 Pour toutes précisions, contactez votre service apres vente local THOMSON multimedia  
 Für weitere Auskünfte, wenden Sie sich bitte an die THOMSON multimedia Kundendienst  
 Per precisazioni, contattare l'assistenza tecnica THOMSON multimedia  
 Para cualquier pregunta, por favor contactar con el responsable de zona del servicio postventa de THOMSON multimedia

**VERSION 1 06 / 2002 35650280**  
**VERSION 2 00 / 0000**

**OTHER PARTS  
AUTRES PIECES  
SONSTIGE TEILE  
ALTRE PARTI  
OTRAS PIEZAS**

F503,504	4AT 250V TIME LAG FUSE 4AT 250V FUSIBLE TEMPORISE 4AT 250V SICHERUNG 4AT 250V FUSIBILE TEMPORIZZATO 4AT 250V FUSIBLE TEMPORIZADO	△ 35057960
F505,802	1A6T 250V TIME-LAG FUSE 1A6T 250V FUSIBLE TEMPORISE 1A6T 250V SICHERUNG 1A6T 250V FUSIBILE TEMPORIZZATO 1A6T 250V FUSIBLE TEMPORIZADO	△ 48064700
F801	2A5T 250V TIME-LAG FUSE 2A5T 250V FUSIBLE TEMPORISE 2A5T 250V SICHERUNG 2A5T 250V FUSIBILE TEMPORIZZATO 2A5T 250V FUSIBLE TEMPORIZADO	△ 10246750
FL701	DISPLAY LCD AFFICHEUR LCD LCD-ANZEIGE VISUALIZZATORE LCD VISUALIZADOR LCD	5510508A
JK001	ANTENNA SOCKET FM PRISE ANTENNE FM ANTENNENBUCHSE FM PRESA ANTENNA FM TOMA DE ANTENA FM	55050620
NJ501	LOUDSPEAKER SOCKET PRISE HAUT PARLEUR LAUTSPRECHERBUCHSE PRESA ALTOPARLANTE TOMA HEMBRA ALTAVOZ	10284650
NJ504	JACK SOCKET PRISE JACK BUCHSE PRESA JACK TOMA JACK	20369030
NJ515	LOUDSPEAKER SOCKET PRISE HAUT PARLEUR LAUTSPRECHERBUCHSE PRESA ALTOPARLANTE TOMA HEMBRA ALTAVOZ	55060580
NJ516	CINCH SOCKET PRISE CINCH CHINCH-BUCHSE PRESA CINCH TOMA CINCH	55051030
OP01	OPTICAL SOCKET PRISE OPTIQUE BUCHSE PICK-UP PRESA OTTICA TOMA OPTICO	55035050
PK001	IF HEAD TETE FI Z-F PLATTE TUNER FI SINTONIZADOR FI	55071960
RAY1	RELAY 12V 3A RELAIS 12V 3A RELAY 12V 3A RELEE 12V 3A RELEE 12V 3A	△ 55048920
RLY801	SDT-S-112LMR RELAY 12V SDT-S-112LMR RELAIS 12V SDT-S-112LMR RELAYS 12V SDT-S-112LMR RELEE 12V SDT-S-112LMR RELEE 12V	△ 35095470

SW701,702, 703,704,705, 706,707,708, 709,710,711, 712,713,714, 715,716,717, 718,719,720, 721,722,723, 724	MICROSWITCH MICROCONTACTEUR MIKROSCHALTER MICROINTERRUTTORE MICROCONTACTOR	20404730
---	--	----------

**EQUIPMENT/PRESENTATION  
EQUIPEMENT/PRESENTATION  
AUSSTATTUNG/GEHAEUSE  
PARTI VARIE  
EQUIPO/PRESENTACION**

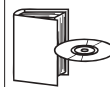
A3080/3180/3380 (REMOTE CONTROL) A3080/3180/3380 (TELECOMMANDE) A3080/3180/3380 (FERNBEDIENUNG) A3080/3180/3380 (TELECOMANDO) A3080/3180/3380 (TELEMANDO)		55201050
LOUDSPEAKER BOX ASSY RIGHT AND LEFT ENCEINTE ACOUSTIQUE GAUCHE ET DROITE LAUTSPRECHERBOX RECHTS UND LINKS CASSA ACUSTICA DESTRO E SINISTRO CAJA ACUSTICA DERECHA Y IZQUIERDA		55114890
LOUDSPEAKER BOX RIGHT ENCEINTE ACOUSTIQUE DROITE LAUTSPRECHERBOX RECHTS CASSA ACUSTICA DESTRA CAJA ACUSTICA DERECHA		35650270
LOUDSPEAKER BOX LEFT ENCEINTE ACOUSTIQUE GAUCHE LAUTSPRECHERBOX LINKS CASSA ACUSTICA SINISTRA CAJA ACUSTICA IZQUIERDA		35650260
FOLDING BOX EMBALLAGE CARTON KARTON IMBALLGGIO CARTONE EMBALAJE CARTON		55277820
FITTING REAR CALE ARRIERE POLSTER HINTEN Distanziatore posteriore CALZO TRASERA		55354990
FITTING FRONT CALE AVANT POLSTER VORN Distanziatore anteriore CALZO DELANTERA		55121820
AM ANTENNA ANTENNE AM AM ANTENNE ANTENNA AM ANTENA AM		20690640
AM ANTENNA HOLDER SUPPORT ANTENNE AM AM ANTENNENHALTER SUPPORTO ANTENNA AM SOPORTE ANTENA AM		20690520
POWER SUPPLY LEAD CORDON D'ALIMENTATION NETZKABEL CAVO DI ALIMENTAZIONE CABLE DE ALIMENTACION		△ 10260820

**MECHANISM  
MECANIQUE  
MECHANIK  
MECCANICA  
MECANISMO**

TCM130-0W + 5CD MECHA. ASSY (W/O DEMO) TCM130-0W + MECANISME 5CD CPL(SANS DEMO) TCM130-0W + 5CD-WECHSLER KPL(OHNE DEMO) TCM130-0W + MECCANISMO 5CD CPL(SEN.DEMO) TCM130-0W + MECANISMO 5CD CPL(SIN DEMO)		55199160
TCM130-0IWD OPTICAL PLAYER TCM130-0IWD LECTEUR OPTIQUE TCM130-0IWD CD-LAUFWERK TCM130-0IWD ASSIEME OTTICA TCM130-0IWD MECANISMO OPTICO		10750810
CASSETTE MECHANISM MECANIQUE CASSETTE CASSETTENLAUFWERK MECCANICA CASSETTA MECANISMO CASSETTE		55377890
RUBBER BELT (MOTOR) D:36,5MM COURROIE CAOOUTHOUC (MOTEUR) D:36,5MM ANTRIEBSRIEMEN (MOTOR) D:36,5MM CINGHIA DI GOMMA (MOTORE) D:36,5MM CORREA DE GOMA (MOTOR) D:36,5MM		55073350
RUBBER BELT (TABLE) D:23MM COURROIE CAOOUTHOUC (POS.PLATEAU) D:23MM ANTRIEBSRIEMEN (TELLER) D:23MM CINGHIA DI GOMMA (PIATTO) D:23MM CORREA DE GOMA (PLATO) D:23MM		20710160
BUSH RUBBER CD FRONT AMORTISSEUR CAOOUTHOUC CD AVANT DAEMPFER GUMMI CD VORN AMMORTIZZATORE DI GOMMA CD ANTERIORE AMORTIGUADOR DE GOMA CD DELANTERA		20446740
BUSH RUBBER CD REAR AMORTISSEUR CAOOUTHOUC CD ARRIERE DAEMPFER GUMMI CD HINTEN AMMORTIZZATORE DI GOMMA CD POSTERIORE AMORTIGUADOR DE GOMA CD TRASERA		20365070

**ACCESSORIES  
ACCESSOIRES  
ZUBEHOER  
ACCESSORI  
ACCESORIOS**

LC20 CD DVD CD-ROM LENS CLEANER LC20 NETTOYEUR DE LENTILLE CD DVD CD-ROM LC20 LINSREINIGER FÜR CD DVD CD-ROM LC20 PULITORE PER LENTI DI CD DVD CD-ROM LC20 LIMPIADOR DE LENTE CD DVD CD-ROM		35128640
---	--	----------



ALTIMA3180/3380 UM TH ALTIMA3180/3380 NU TH ALTIMA3180/3380 BA TH ALTIMA3180/3380 IU TH ALTIMA3180/3380 IU TH		55403580
CRKD2553 TH SERVICE MANUAL CRKD2553 TH DOCUMENTATION TECHNIQUE CRKD2553 TH TECHNISCHE DOKUMENTATION CRKD2553 TH DOCUMENTAZIONE TECNICA CRKD2553 TH DOCUMENTACION TECNICA		35650290
A3380 PARTS LIST A3380 LISTE DE PIECES DETACHEES A3380 ERSATZTEILLISTE A3380 LISTA PARTI DI RICAMBIO A3380 LISTA DE PIEZAS DE REPUESTO		35650280

**CHASSIS AND PRESENTATION  
CHASSIS ET PRESENTATION  
CHASSIS UND GEHAEUSETEILE  
TELAIO E DI PRESENTAZIONE  
CHASIS Y PRESENTACION**

AMPL	AMPLI BOARD AMPLI PLATINE AMPLI PLATTE AMPLI PIASTRA AMPLI PLATINA	55212490
MAIN	MAIN BOARD MAIN PLATINE MAIN PLATTE MAIN PIASTRA MAIN PLATINA	55212470
POWE	POWER BOARD POWER PLATINE POWER PLATTE POWER PIASTRA POWER PLATINA	55212500
040	FRONT PANEL FACADE FRONTPLATTE PANNELLO FRONTALE PANEL FRONTAL	55243260
060	SIDE PANEL LEFT PANNEAU LATERAL GAUCHE SEITENTEIL LINKS PANNELLO LATERALE SINISTRO PANEL LATERAL IZQUIERDO	55123620
070	SIDE PANEL RIGHT PANNEAU LATERAL DROIT SEITENTEIL RECHTS PANNELLO LATERALE DESTRO PANEL LATERAL DERECHO	55123560
100	CASSETTE FLAP DOOR LEFT VOLET CASSETTE GAUCHE CASSETTENKLAPPE LINKS SPORTELLLO CASSETTA SINISTRO TAPA CASSETTE IZQUIERDO	55234160
110	CASSETTE FLAP DOOR RIGHT VOLET CASSETTE DROIT CASSETTENKLAPPE RECHTS SPORTELLLO CASSETTA DESTRO TAPA CASSETTE DERECHO	55234170
120	TRAY CD VOLET CD CD Klappe SPORTELLLO CD TAPA CD	55221430
150	VOLUME KNOB BOUTON VOLUME LAUTSTAERKEKNOPF TASTO VOLUME TECLA VOLUMEN	55240390
250	BUTTON B.BOOST/VOLUME RING BAGUE TOUCHE B.BOOST/VOLUME TASTE B.BOOST/VOLUME RING TASTO B.BOOST/VOLUME ANELLO TECLA B.BOOST/VOLUME ANILLO	55160390
260	CONTROL PANEL TABLEAU DE COMMANDES BEDIENTEIL QUADRO DI COMANDO TABLERO DE MANDO	55266830
270	DISPLAY WINDOW GLACE AFFICHEUR ANZEIGEFENSTER VETRO DEL VISUALIZZATORE CRISTAL DEL VISUALIZADOR	55266840
280	CASSETTE FLAP DOOR TRIM LEFT ENJOLIVEUR VOLET CASSETTE GAUCHE ZIERRHMEN CASSETTENKLAPPE LINKS FINIZIONE SPORTELLLO CASSETTA SINISTRO EMBELLECEDOR TAPA CASSETTE IZQUIERDO	55266850

290	CASSETTE FLAP DOOR TRIM RIGHT ENJOLIVEUR VOLET CASSETTE DROIT ZIERRHMEN CASSETTENKLAPPE RECHTS FINIZIONE SPORTELLLO CASSETTA DESTRO EMBELLECEDOR TAPA CASSETTE DERECHO	55266860
300	UPPER FLAP VOLET SUPERIEUR OBEN Klappe SPORTELLLO SUPERIORE TAPA SUPERIOR	55221720
320	CASSETTE FLAP WINDOW LEFT GLACE VOLET CASSETTE GAUCHE FENSTER CASSETTENKLAPPE LINKS VETRO SPORTELLLO CASSETTA SINISTRO CRISTAL TAPA CASSETTE IZQUIERDO	55221740
340	CASSETTE FLAP WINDOW RIGHT GLACE VOLET CASSETTE DROIT FENSTER CASSETTENKLAPPE RECHTS VETRO SPORTELLLO CASSETTA DESTRO CRISTAL TAPA CASSETTE DERECHA	55221760
350	UPPER FLAP WINDOW GLACE VOLET SUPERIEUR FENSTER OBEN Klappe VETRO DEL SPORTELLLO SUPERIORE CRISTAL DEL TAPA SUPERIOR	55234620
360	TRAY CD WINDOW GLACE VOLET CD FENSTER CD Klappe VETRO DEL SPORTELLLO CD CRISTAL DEL TAPA CD	55266880
500	CASSETTE DOOR DAMPER GEAR ROUE DENTEE PORTE CASSETTE ZAHNRAD CASSETTENHALTER RUOTA DENTATA PORTACASSETTA RUEDA DENTADA PORTACASSETTE	20688960

**CHASSIS AND PRESENTATION 2  
CHASSIS ET PRESENTATION 2  
CHASSIS UND GEHAEUSETEILE 2  
TELAIO E DI PRESENTAZIONE 2  
CHASIS Y PRESENTACION 2**

CDM5	TCM130-0W + 5CD MECHANISM ASSY TCM130-0W + MECANISME 5CDCPL TCM130-0W + 5CD-WECHSLER KPL TCM130-0W + MECCANISMO 5CD CPL TCM130-0W + MECANISMO 5CD CPL	55199160
KDB	DISPLAY/CONTROL BOARD DISPLAY/CONTROL PLATINE DISPLAY/CONTROL PLATTE DISPLAY/CONTROL PIASTRA DISPLAY/CONTROL PLATINA	55356820
080	REAR PANEL PANNEAU ARRIERE SEITENTEIL HINTEN PANNELLO POSTERIORE PANEL POSTERIOR	55266780
090	UPPER CASE ASSY COFFRET SUPERIEUR GEHAEUSE OBEN CASSA SUPERIORE CAJA SUPERIOR	55110500
160	BUTTON STRIP 6 KEYS LEFT BARRETTE DE 6 TOUCHES GAUCHE TASTENLEISTE 6 TASTE LINKS PIATTINA 6 TASTI SINISTRO PLACA DE 6 TECLAS IZQUIERDA	55266790
170	BUTTON STRIP 6 KEYS RIGHT BARRETTE DE 6 TOUCHES DROITE TASTENLEISTE 6 TASTE RECHTS PIATTINA 6 TASTI DESTRO PLACA DE 6 TECLAS DERECHA	55266800

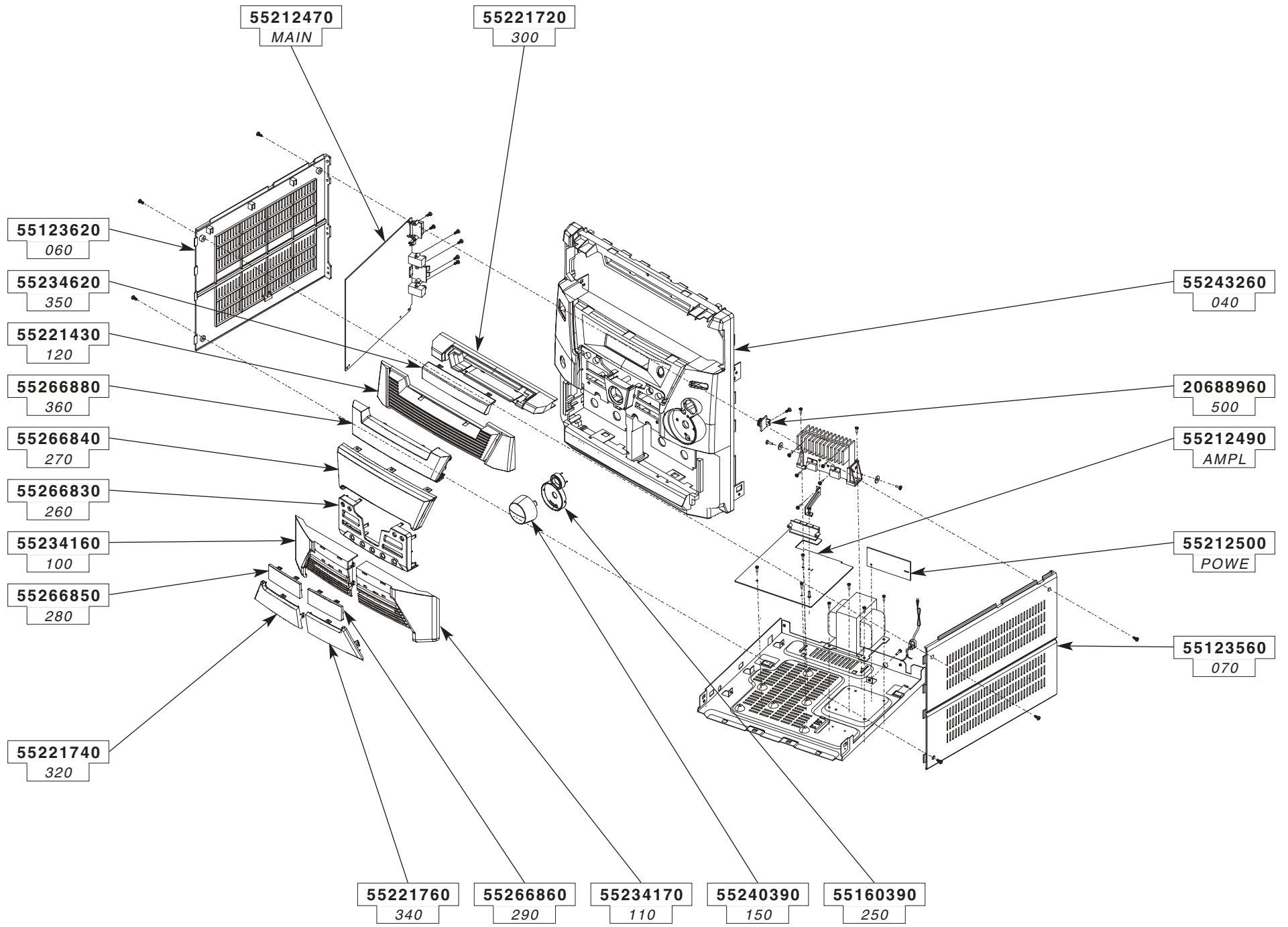
180	BUTTON STRIP DISC CD BARRETTE DE TOUCHES SELECTION DISQUE TASTENLEISTE AUSWAHL LASERPLATTE PIATTINA TASTI SELEZIONE DEL DISCOS PLACA DE TECLAS SELECCION DE DISCOS	55266820
190	BUTTON STRIP ROCK-FLAT-JAZZ BARRETTE TOUCHES 3T ROCK-FLAT-JAZZ TASTENLEISTE ROCK-FLAT-JAZZ PIATTINA TASTI 3T ROCK-FLAT-JAZZ PLACA DE TECLAS 3T ROCK-FLAT-JAZZ	55240350
200	X-SURROUND BUTTON TOUCHE X-SURROUND TASTE X-SURROUND TASTO X-SURROUND TECLA X-SURROUND	55286620
220	B.BOOST BUTTON TOUCHE B.BOOST TASTE B.BOOST TASTO B.BOOST TECLA B.BOOST	55111040
230	TRAY CONTROL BUTTON TOUCHE CDE TIROIR CD CD SCHUBEINHEIT TASTE TASTO COMANDI PORTA-DISCHI TECLA MANDOS PORTADISCO	55221660
240	ON/OFF BUTTON TOUCHE MARCHE/ARRET EIN-AUS TASTE TASTO ACCESO/SPENTO TECLA MARCHA/PARADA	55355090
370	CRYSTAL B.BOOST GLACE B.BOOST FENSTER B.BOOST VETRO B.BOOST CRISTAL B.BOOST	55286690
390	CASSETTE HOLDER LEFT PORTE CASSETTE GAUCHE CASSETTENHALTER LINKS PORTACASSETTA SINISTRO PORTACASSETTE IZQUIERDO	55234660
400	CASSETTE HOLDER RIGHT PORTE CASSETTE DROIT CASSETTENHALTER RECHTS PORTACASSETTA DESTRO PORTACASSETTE DERECHO	55234670
450	SPRING TORSION CASSETTE LEFT RESSORT VOLET CASSETTE GAUCHE NADELFEDER CASSETTENKLAPPE LINKS MOLLA PORTACASSETTA SINISTRO RESORTE PORTACASSETTE IZQUIERDO	55113720
460	SPRING TORSION CASSETTE RIGHT RESSORT VOLET CASSETTE DROIT NADELFEDER CASSETTENKLAPPE RECHTS MOLLA PORTACASSETTA DESTRO RESORTE PORTACASSETTE DERECHO	55113730
520	CASSETTE MECHANISM MECANIQUE CASSETTE CASSETTENLAUFWERK MECCANICA CASSETTA MECANISMO CASSETTE	55377890

**CD MECHANISM  
MECANIQUE CD  
CD MECHANIK  
MECCANISMO CD  
MECANICA CD**

03	SPRING RESSORT FEDER MOLLA RESORTE	20979850
04	GEAR MAIN ROUE DENTEE PRINCIPALE HAUPT-ZAHNRAD RUOTA DENTATA PRINCIPAL RUEDA DENTADA PRINCIPALE	20979800
05	GEAR PIVOT ENGRENAGE PIVOT ZAHNRAD DREHPUNKT PIGNONE PERNO PINON PIVOTE	20979830
06	DUAL GEAR WHEEL DOUBLE ROUE DENTEE DOPPELT ZAHNRAD DOPPIO RUOTA DENTATA DOBLE RUEDA DENTADA	20979760
07	SWING ARM BRAS PIVOT ARM,DREHPUNKT BRACCIO PERNO BRAZO PIVOTE	20979940
09	GEAR CLUTCH ROUE D'EMBRAYAGE RAD KUPPLUNG RUOTA DI FRIZIONE RUEDA DE EMBRAGUE	20979750
10	SLIDING ROLLER PATIN GLISSANT RUTSCHIG ROLL PATTINO SCIVOLOSO PATIN RESBALADIZO	20979950
11	GEAR WHEEL ROUE DENTEE ZAHNRAD RUOTA DENTATA RUEDA DENTADA	20979790
12	DUAL GEAR DOUBLE ENGRENAGE DOPPELT ZAHNRAD DOPPIO PIGNONE DOBLE PINON	20979770
13	INTERMEDIATE GEAR WHEEL POULIE INTERMEDIAIRE DENTEE ZWISCHENZAHNRAD PULEGGIA INTERMEDIA DENTATA POLEA INTERMEDIA DENTADA	20979840
14	MOTOR PULLEY TRAY/TABLE CD POULIE MOTEUR TIROIR/PLATEAU CD MOTORROLLE SCHUBLADE/TELLER CD PULEGGIA DEL MOTORE CASSETTO/ PIATTO CD POLEA DE MOTOR CORREDERA/ PLATO CD	20979870
15	GUIDE RAIL GUIDE RAIL FUEHRUNGSSCHIENE EINFAEDELN CONTROROTAIA CONTRACARRIL	20979740
16	MAIN GEAR TORSION SPRING RESSORT A EPINGLE ROUE PRINCIPALE HAUPT-ZAHNRAD NAELFEDER MOLLA DI TORSIONE RUOTA PRINCIPAL RESSORTE HORQUILLA RUEDA PRINCIPALE	20979810

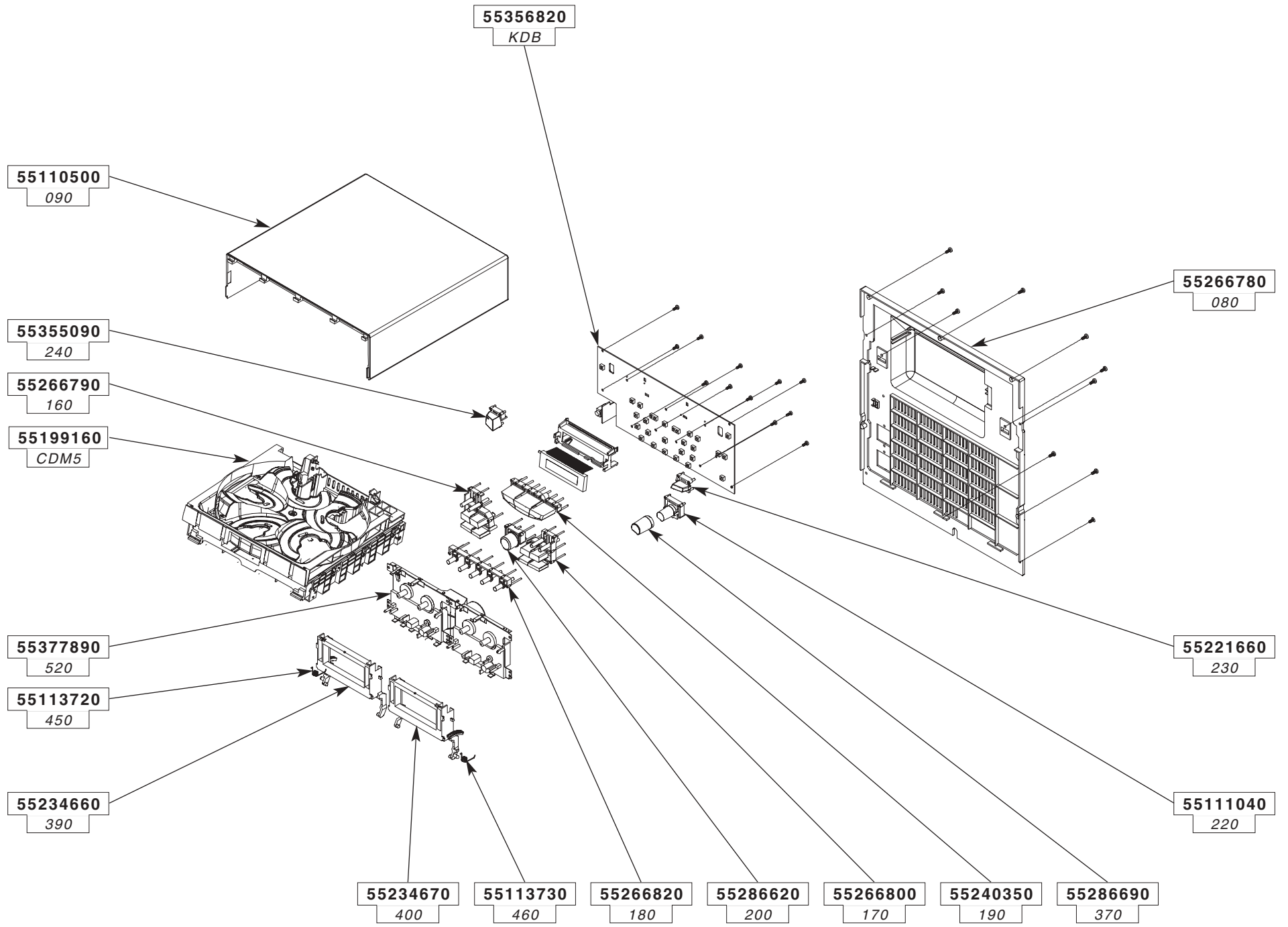
17	OPTICAL PLAYER BRACKET SUPPORT LECTEUR OPTIQUE CD-LAUFWERK HALTER SUPPORTO ASSIEME OTTICA SOPORTE MECANISMO OPTICO	20979970
22	THREADED END-FITTING EMBOUT PLASTIQUE MUFFENTUELLE GHIERA DI PLASTICA CONTERA PLASTICA	20979960
24	INTERMEDIATE SPINDLE AXE INTERMEDIAIRE ZWISCHENACHSE SPINOTTO INTERMEDIO EJE INTERMEDIO	20979890
25	DUAL GEAR WHEEL DOUBLE ROUE DENTEE DOPPELT ZAHNRAD DOPPIO RUOTA DENTATA DOBLE RUEDA DENTADA	20979780
26	PULLEY POULIE ROLLE PULEGGIA POLEA	20979880
27	RUBBER ROLLER BRACKET SUPPORT GALET CAOUTCHOUC GUMMIROLLE HALTER SUPPORTO RULLO DI GOMMA SOPORTE RODILLO DE GOMA	20712170
29	SPRING RESSORT SPRUNGFEDER MOLLA MUELLE	55105210
30	ARM, PLASTIC BRAS PLASTIQUE ARM, KUNSTSTOFF BRACCIO IN PLASTICA BRAZO PLASTICO	20979980
32	CD LOCK MAGNET VERROU AIMANT CD RIEGEL MAGNET CD CHIUSURA MAGNETE CD CERROJO IMAN CD	55257480
33	TABLE 5 CD PLATEAU 5 CD TELLER 5 CD PIATTO 5 CD PLATO 5 CD	55066450
34	FF-130SH-14230 MOTOR DC FF-130SH-14230 MOTEUR DC FF-130SH-14230 MOTOR DC FF-130SH-14230 MOTORE DC FF-130SH-14230 MOTOR DC	20581820
35	RF-500TB MOTOR DC RF-500TB MOTEUR DC RF-500TB MOTOR DC RF-500TB MOTORE DC RF-500TB MOTOR DC	20581800
36	RUBBER ROLLER GALET CAOUTCHOUC GUMMIROLLE RULLO DI GOMMA RODILLO DE GOMA	20712120
37	HOLDER MAGNET SUPPORT AIMANT HALTER MAGNET SUPPORTO MAGNETE SOPORTE IMAN	55381040

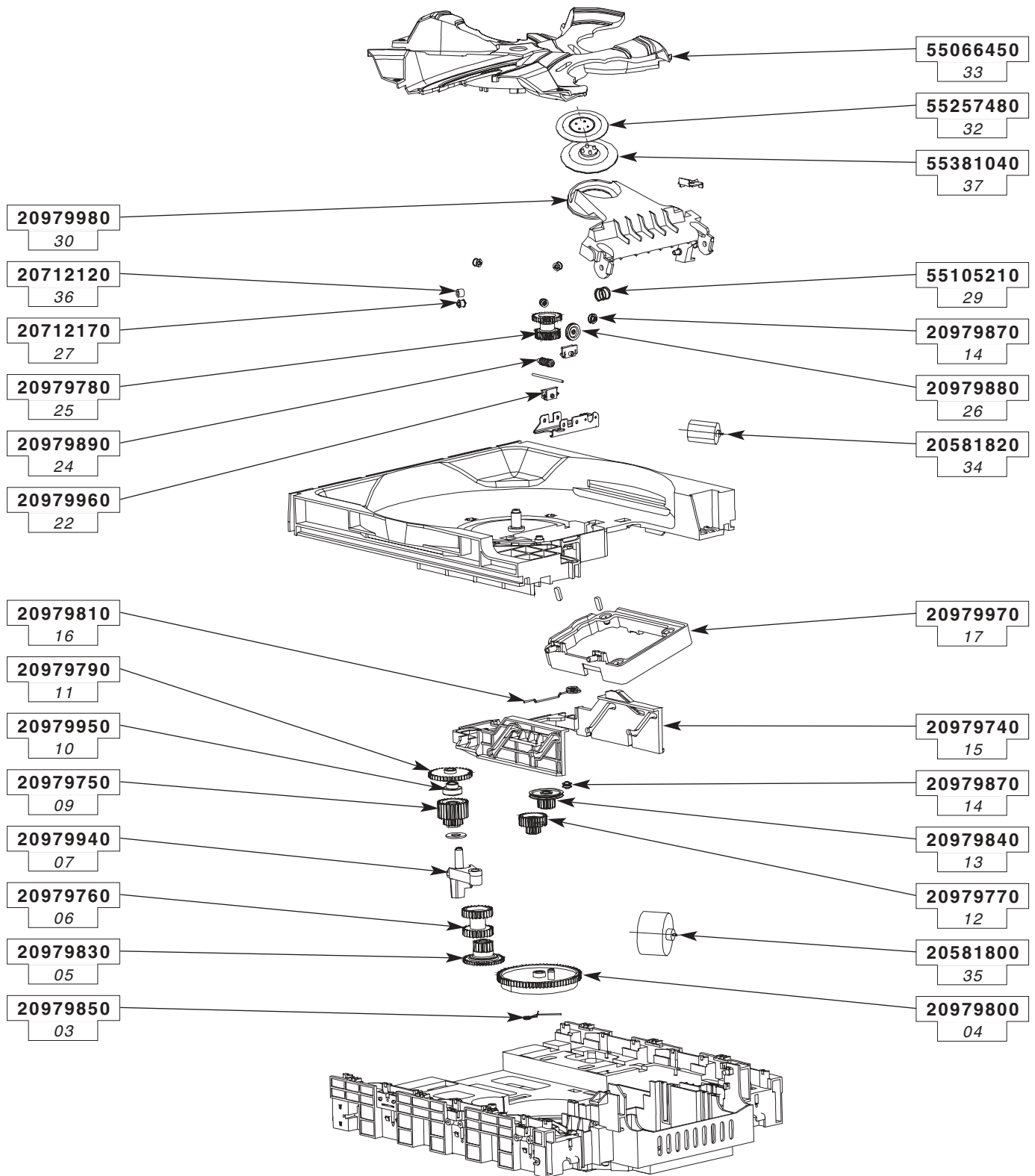
CHASSIS AND PRESENTATION / CHASSIS ET PRESENTATION / CHASSIS UND GEHAEUSETEILE /  
TELAIO E DI PRESENTAZIONE / CHASIS Y PRESENTACION





CHASSIS AND PRESENTATION 2 / CHASSIS ET PRESENTATION 2 / CHASSIS UND GEHAEUSETEILE 2 /  
TELAIO E DI PRESENTAZIONE 2 / CHASIS Y PRESENTACION 2





**CD MECHANISM / MECANIQUE CD / CD MECHANIK /  
MECCANISMO CD / MECANICA CD**

A3380

7/7

The description and characteristics given here are of informative significance only, and non committal. To keep up the high quality of our products, we reserve the right to make any changes or improvement without previous notice. • Les descriptions et caractéristiques figurant sur ce document sont données à titre d'information et non d'engagement. En effet, soucieux de la qualité de nos produits, nous nous réservons le droit d'effectuer, sans préavis, toute modification ou amélioration. • Die Beschreibungen und Daten in dieser Anleitung dienen nur zur Information und sind nicht bindend. Um die Qualität unserer Produkte ständig zu verbessern, behalten wir uns das Recht auf Änderungen vor. • Le descrizioni e le caratteristiche date su questo documento sono fornite a semplice titolo informativo e senza impegno. Ci riserviamo il diritto di eseguire, senza preavviso, qualsiasi modifica o miglioramento. • Las descripciones y características que figuran en este documento se dan a título de información y no de compromiso. En efecto, en bien de la calidad de nuestros productos, nos reservamos el derecho de efectuar, sin previo aviso, cualquier modificación o mejora.