



**SERVICE MANUAL
DOCUMENTATION TECHNIQUE
TECHNISCHE DOKUMENTATION
DOCUMENTAZIONE TECNICA
DOCUMENTACION TECNICA**

THOMSON **A 3580
A 3585**

Version (PC*): A

*PC: The version code is indicated either in the battery compartment or on the back of the unit - ce code version est indiqué dans le compartiment à piles ou au dos de l'appareil - PC: Version des Geräts wird im Batteriefach oder auf der Rückseite angegeben - il codice della versione è indicato nello scompartimento delle batterie o sul retro dell'apparecchio - el código de la versión está indicado en el compartimento de las pilas o en la parte trasera del aparato.



This service manual refers only to the specific circuit diagrams of this set. Regarding the other parts, please to the following service manual :

La présente documentation technique ne traite que des circuits spécifiques à cet appareil. Pour les autres parties, se reporter à la documentation technique suivante :

Diese technische Dokumentation zeigt anschliesslich die spezifischen Schabilder dieses Gerätes, Weitere technische Informationen entnehmen Sie bitte dem folgenden Service Manuel :

Questa documentazione tecnica tratta solo del circuiti specifici di questa apparecchio. Per le altre parti, consultare la documentazione tecnica del :

El presente libro técnico solo trata de los circuitos específicos de esta aparato. En lo que se refiere a las ostra partes referirse al libro del :

356 502 90



WARNING : *Before servicing this chassis read the safety recommendations.*
ATTENTION : *Avant toute intervention sur ce châssis, lire les recommandations de sécurité.*
ACHTUNG : *Vor jedem Eingriff auf diesem Chassis, die Sicherheitsvorschriften lesen.*
ATTENZIONE : *Prima di intervenire sullo chassis, leggere le norme di sicurezza.*
IMPORTANTE : *Antes de cualquier intervención, leer las recomendaciones de seguridad.*

Code : 356 571 00 - 09/02 / 3,7M - CRKD2554 Print.

ADJUSTMENTS - REGLAGES - EINSTELLUNGEN - REGOLAZIONI - AJUSTES

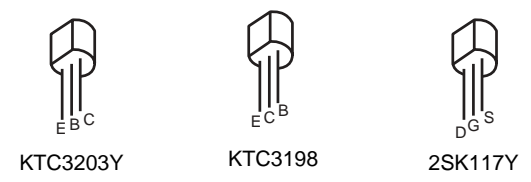
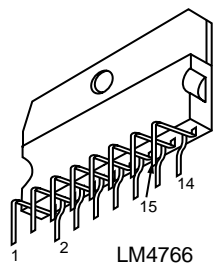
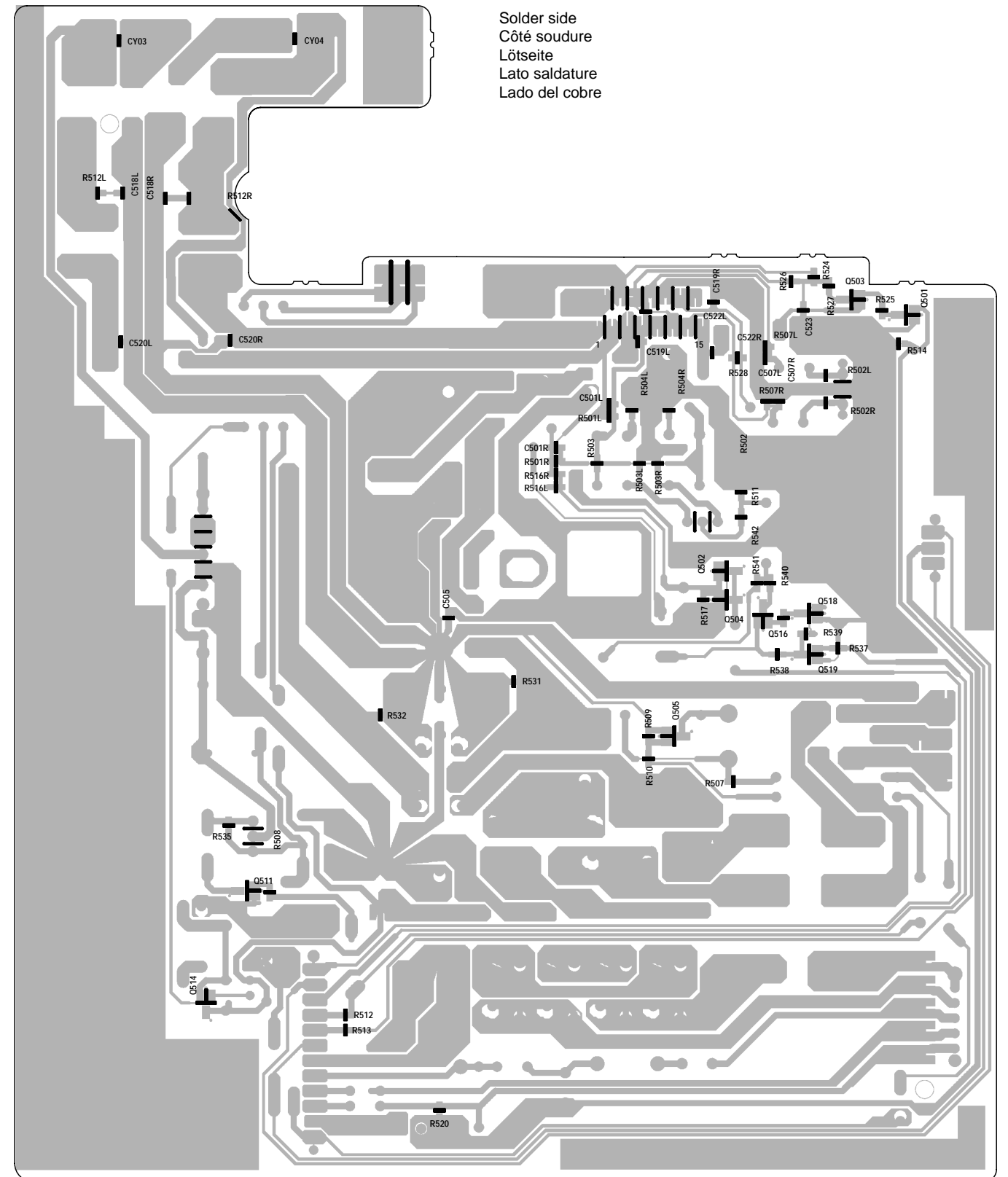
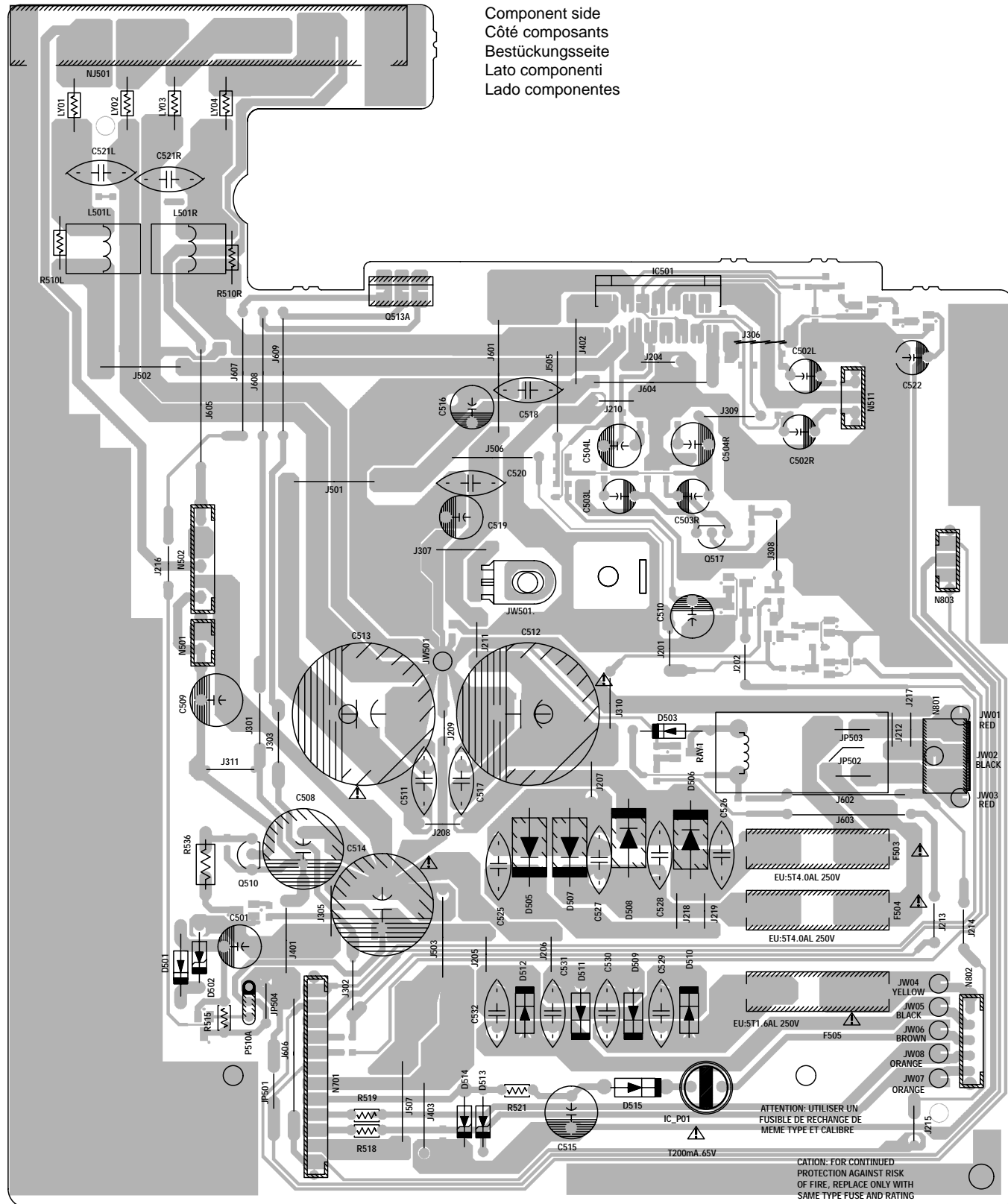
AM alignment						
			f			
VT	1	LW	150 kHz	150 kHz		TP03 V = 2,2V +/-0,4V
	2	LW	283 kHz	283 kHz		TP03 V = 6,5V +/-0,5V
	3	MW	522 kHz	522 kHz		TP03 V = 1,2V +/-0,4V
	4	MW	1611 kHz	1611 kHz		TP03 V = 7,5V +/-0,5V

FM alignment						
			f			
VT	1		87,5 MHz	87,5 MHz		TP03 V = 1,3V ±0,2V
	2		108 MHz	108 MHz		TP03 7,2 < V < 9,0
IF	3	TP 10 Ve = 10 mV	10,7 MHz	10,7 MHz	TF001	TP11

Decoder							
			f				
	1		Lch	98 MHz	98 MHz	TF003	Rch min
	2	25dBu	Rch	98 MHz	98 MHz	TF002	Lch min

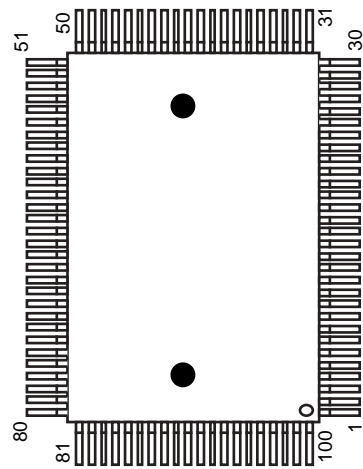
Scan stop						
			f			
FM	1	25dBf	98 MHz	98 MHz	RV001	TP13
	2	25dBf	89,95 kHz			TP13

Power supply / amplifier P.C.B.
 Platine alimentation / amplificateur
 Ltpl. Netzteil und Endverstärker
 Piastra alimentazione / amplificatore
 Platina alimentación / amplificador

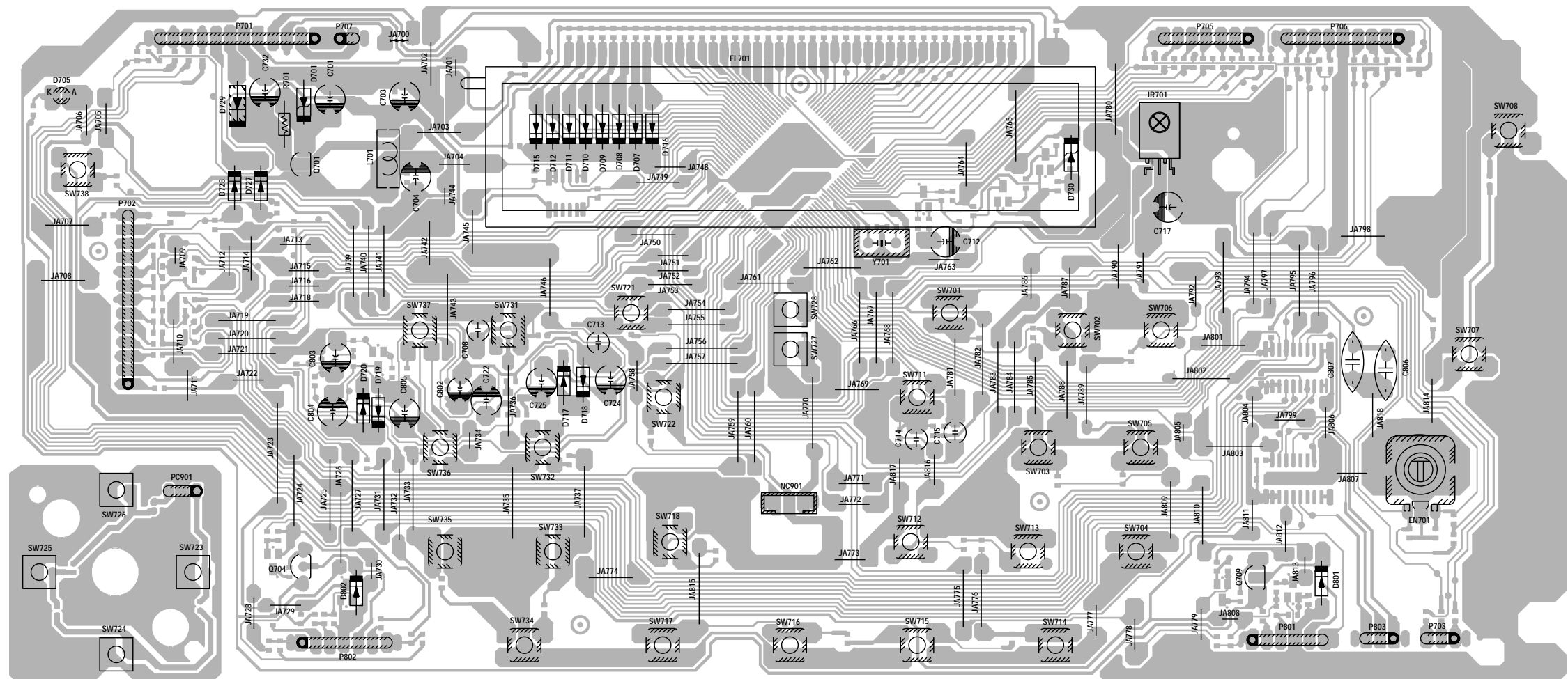


Controls / display P.C.B.
 Platine commandes / afficheurs
 Ltpl. Bedienteil / Anzeige
 Piastra comandi / indicatori
 Platina de mandos / indicadores

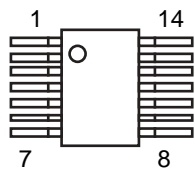
Component side
 Côté composants
 Bestückungsseite
 Lato componenti
 Lado componentes



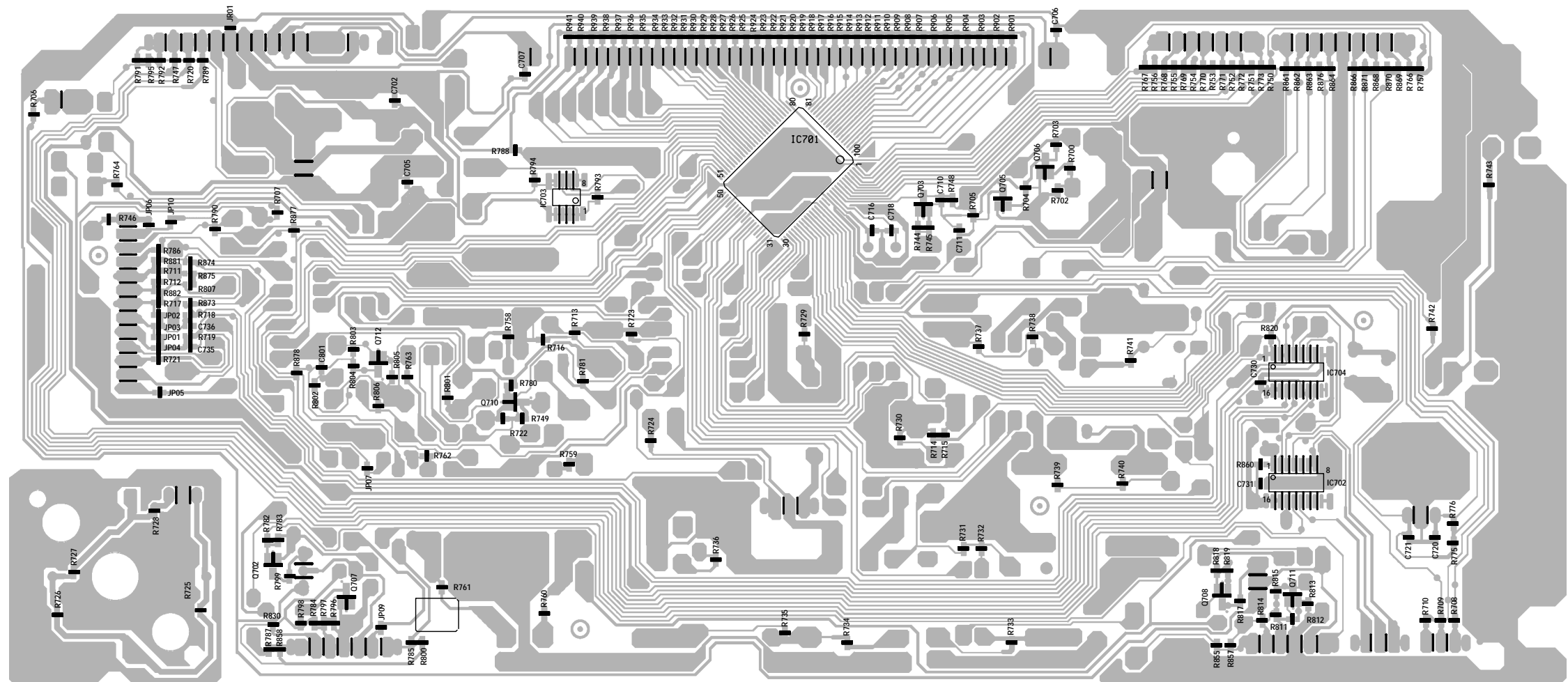
UPD780206GF



Solder side
 Côté soudure
 Lötseite
 Lato saldature
 Lado del cobre

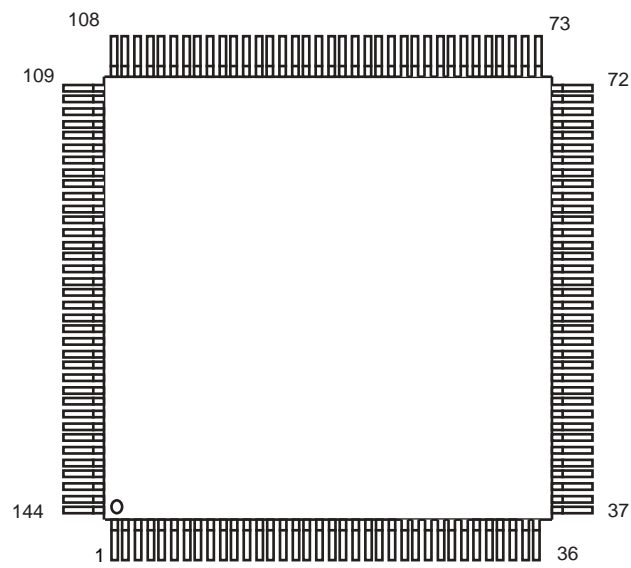
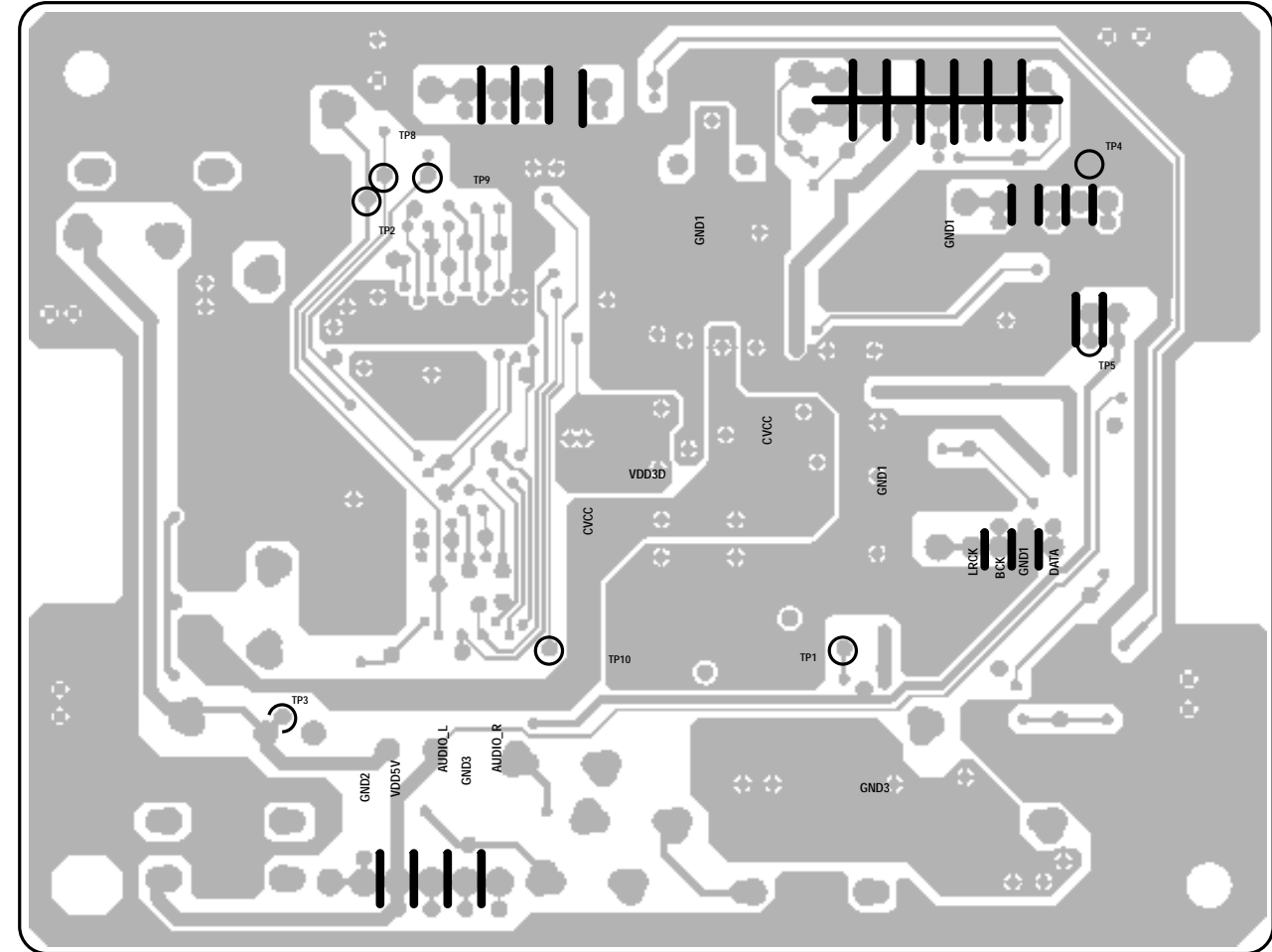
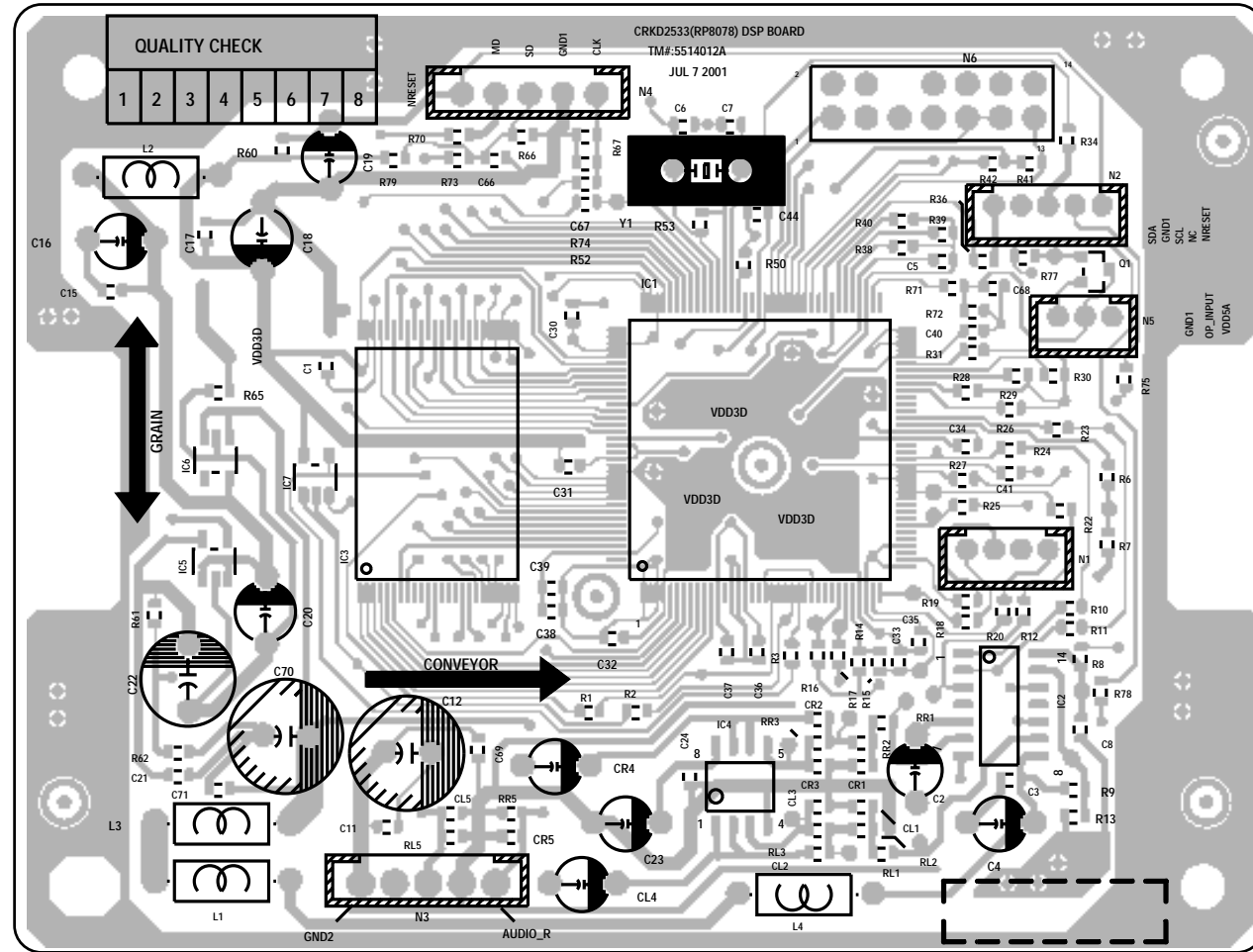


HCF4094BM1

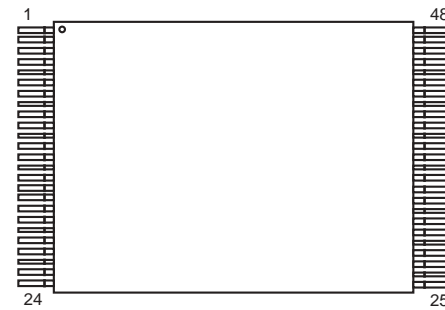


Component side
 Côté composants
 Bestückungsseite
 Lato componenti
 Lado componentes

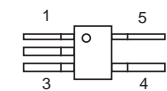
Solder side
 Côté soudure
 Lötseite
 Lato saldature
 Lado del cobre



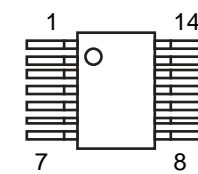
TMS 320VC5416



M29W800AT90N1

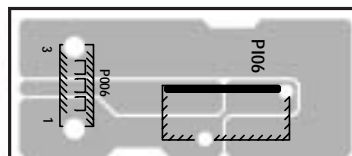
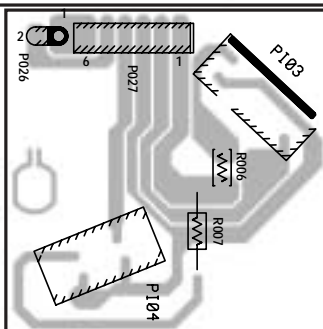
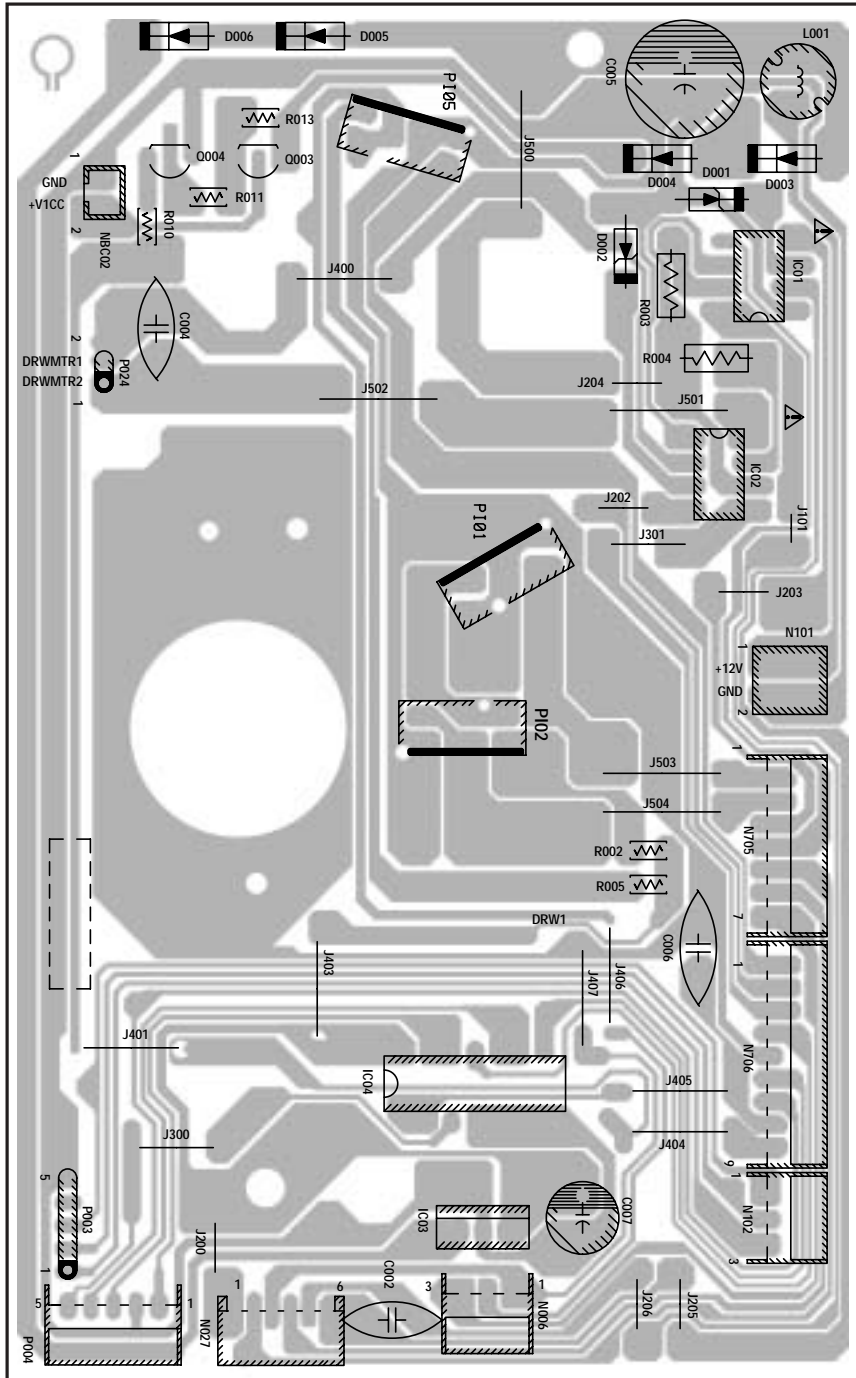


74HAC1G00
 TPS 76301DBVR

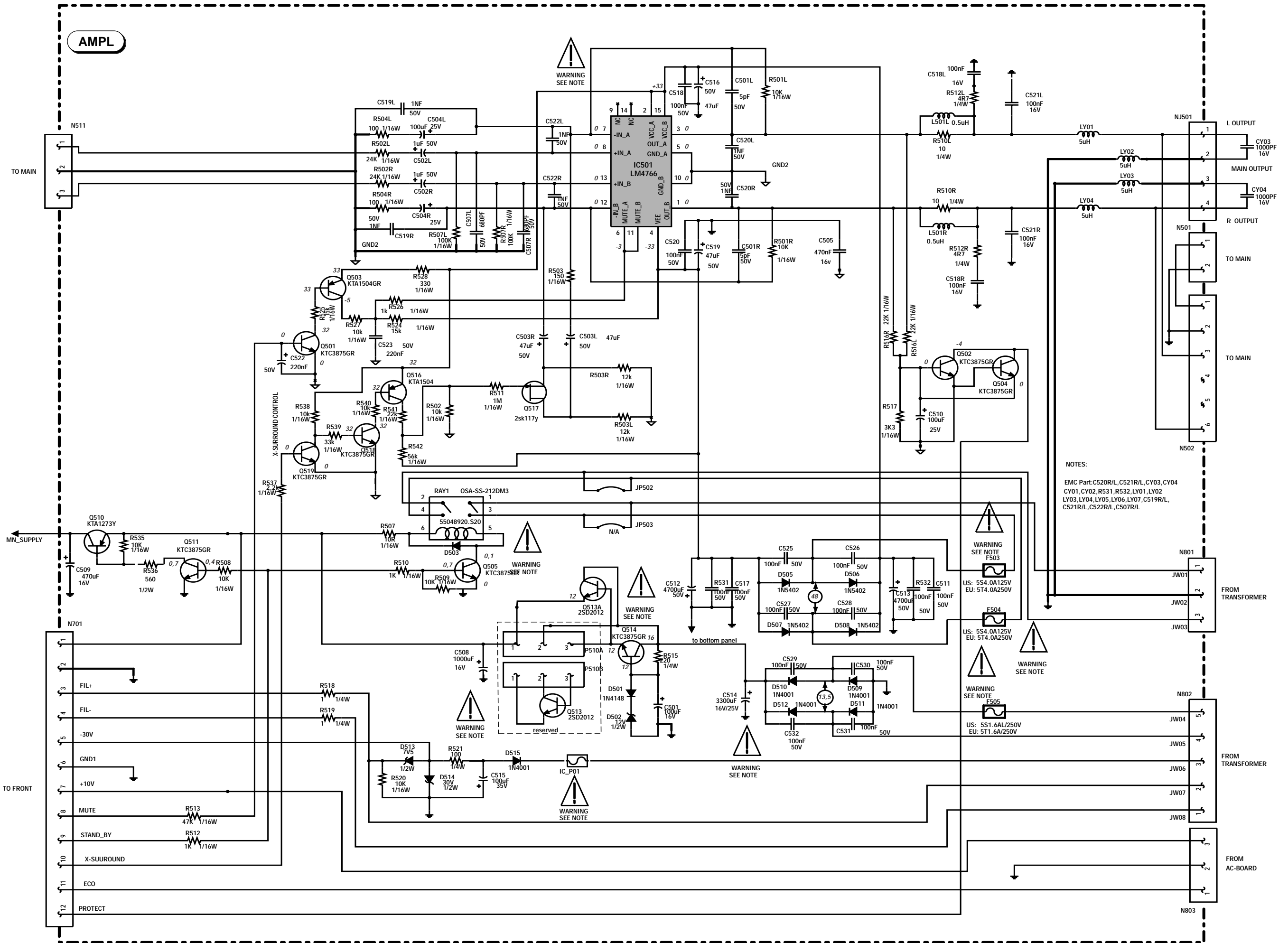


WM8725ED

CD control P.C.B.
Platine commandes CD
Ltpl. CD Bedienteil
Piastra comandi CD
Platina de mandos CD

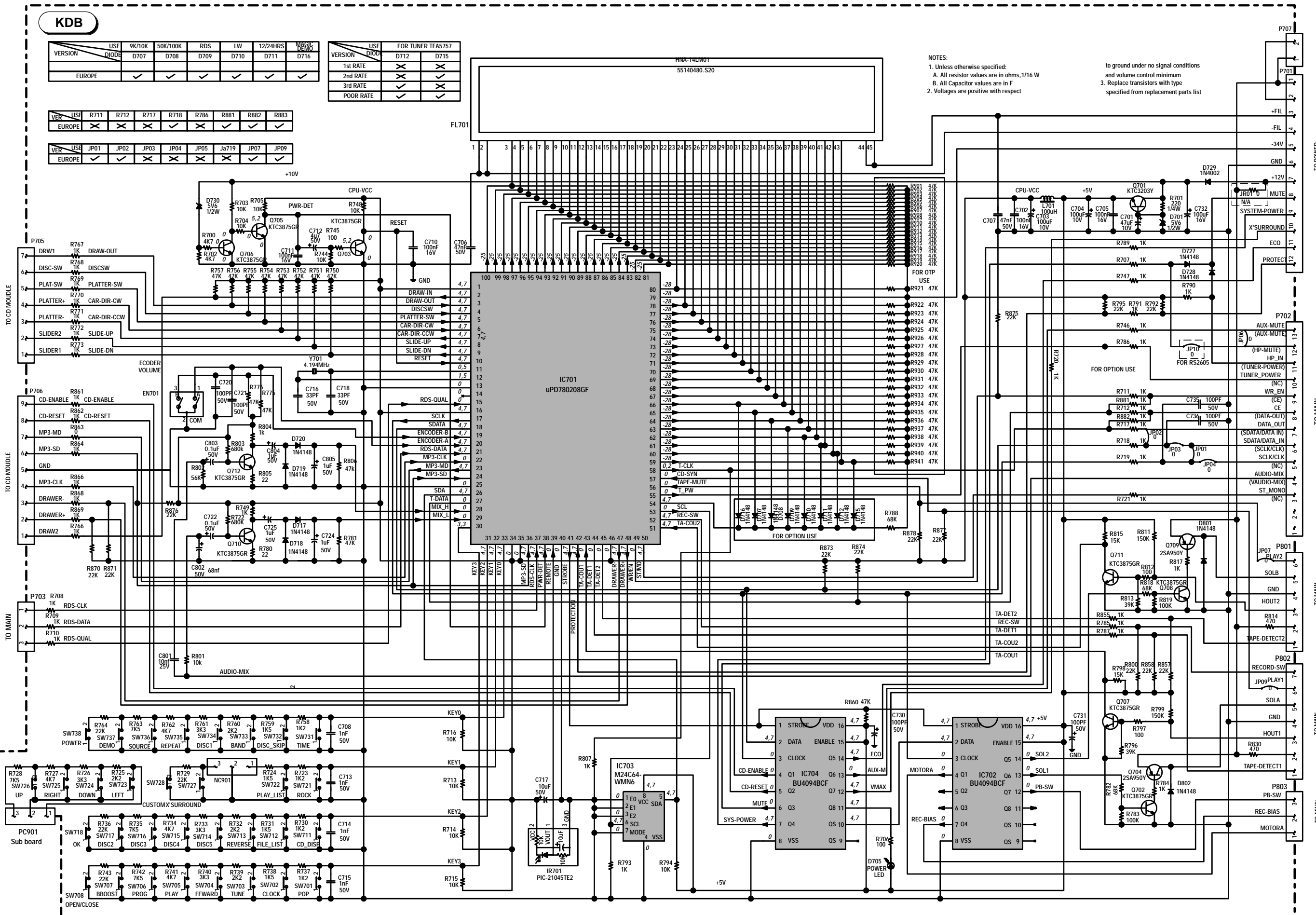


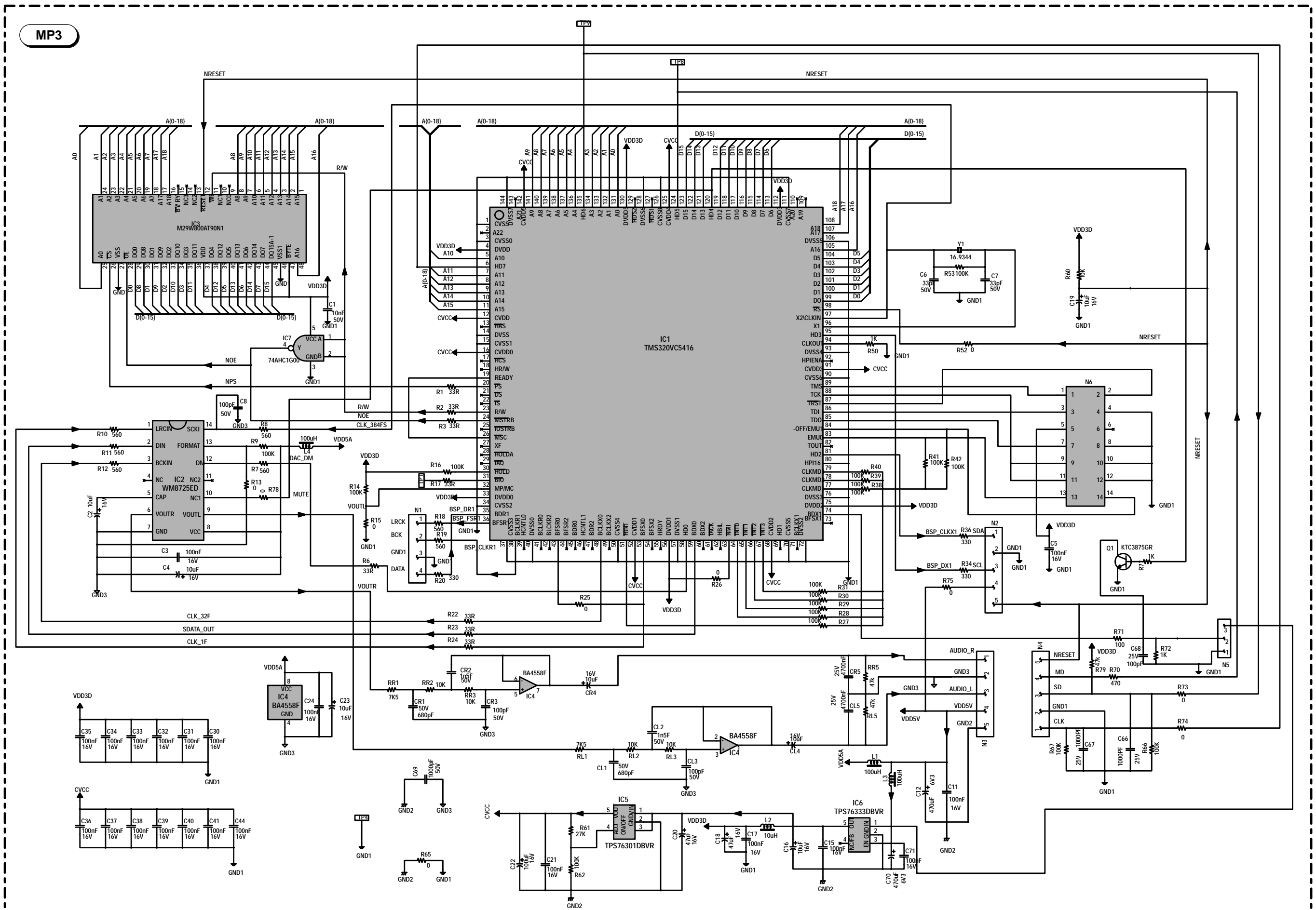
AMPLIFIER SCHEMATIC DIAGRAM - SCHEMA DE L'AMPLIFICATEUR - SCHALTBILD ENDVERSTÄRKER - SCHEMA DEL AMPLIFICATORE - ESQUEMA DEL AMPLIFICADOR



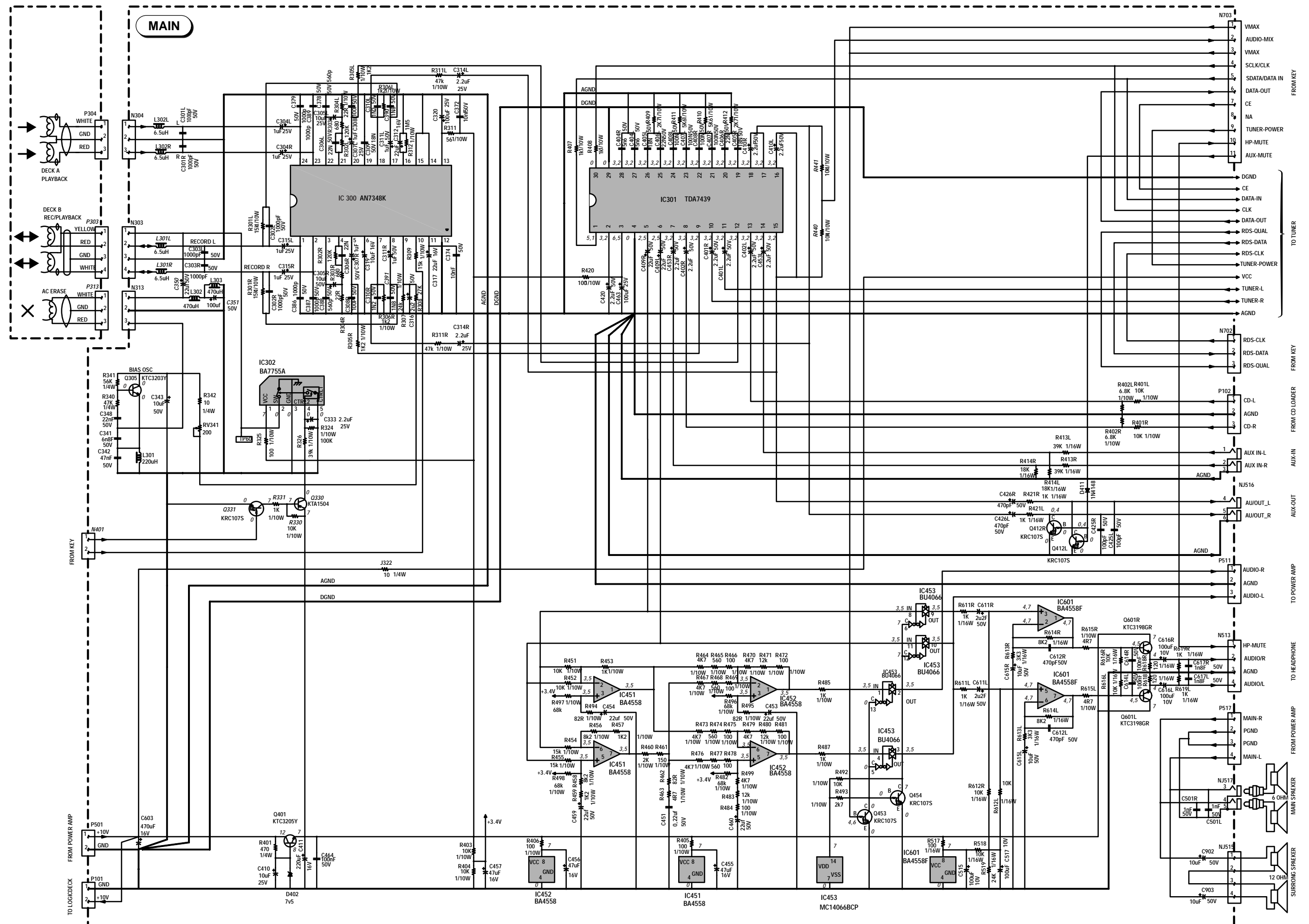
NOTES:
 EMC Part: C520R/L, C521R/L, CY03, CY04
 CY01, CY02, R531, R532, LY01, LY02
 LY03, LY04, LY05, LY06, LY07, C519R/L,
 C521R/L, C522R/L, C507R/L

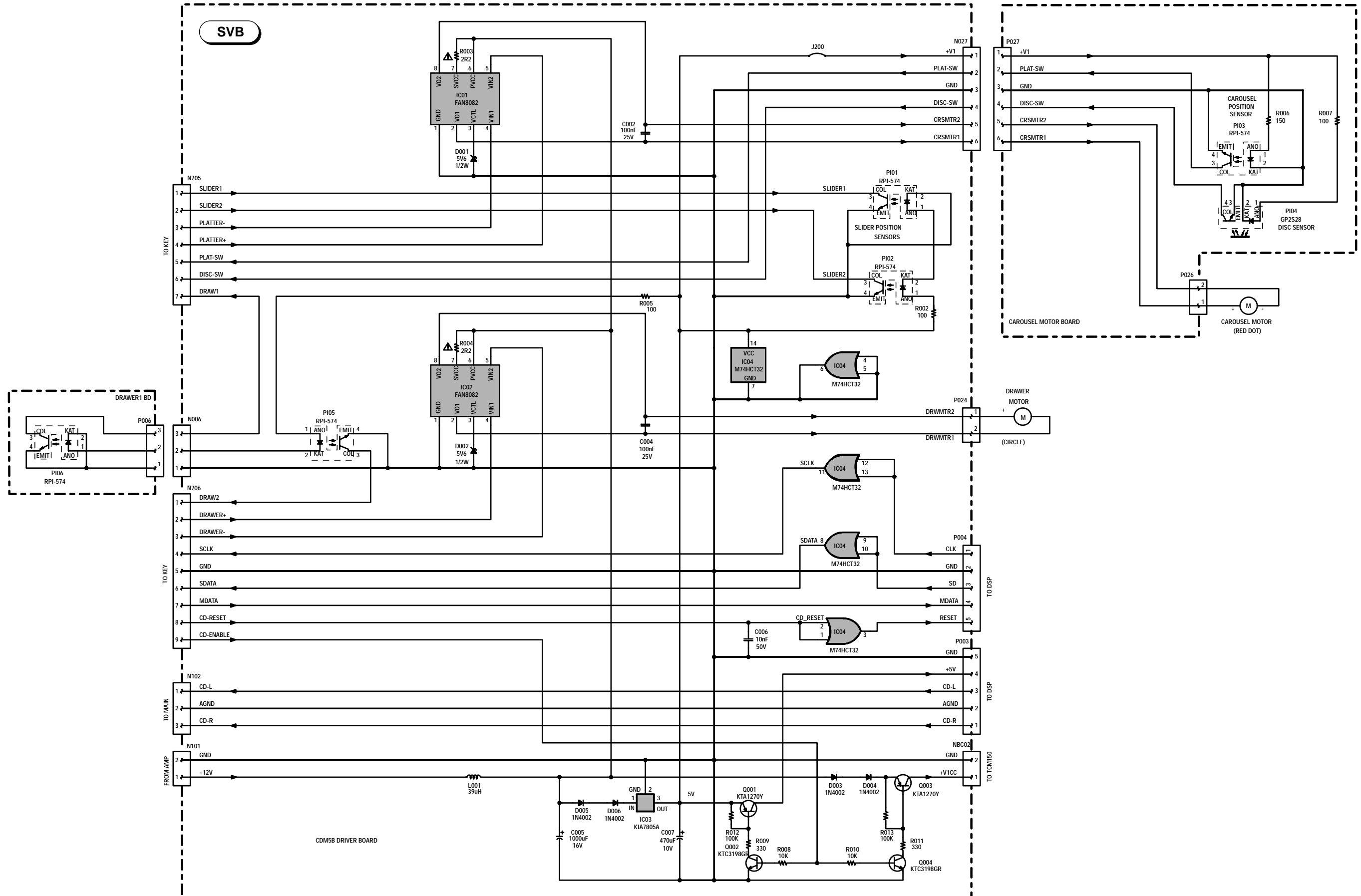
CONTROL / DISPLAY SCHEMATIC DIAGRAM - SCHEMA COMMANDES / AFFICHEUR - SCHALTBILD BEDIENTEIL / ANZEIGE - SCHEMA COMANDI / INDICATORE - ESQUEMA MANDOS / INDICADOR



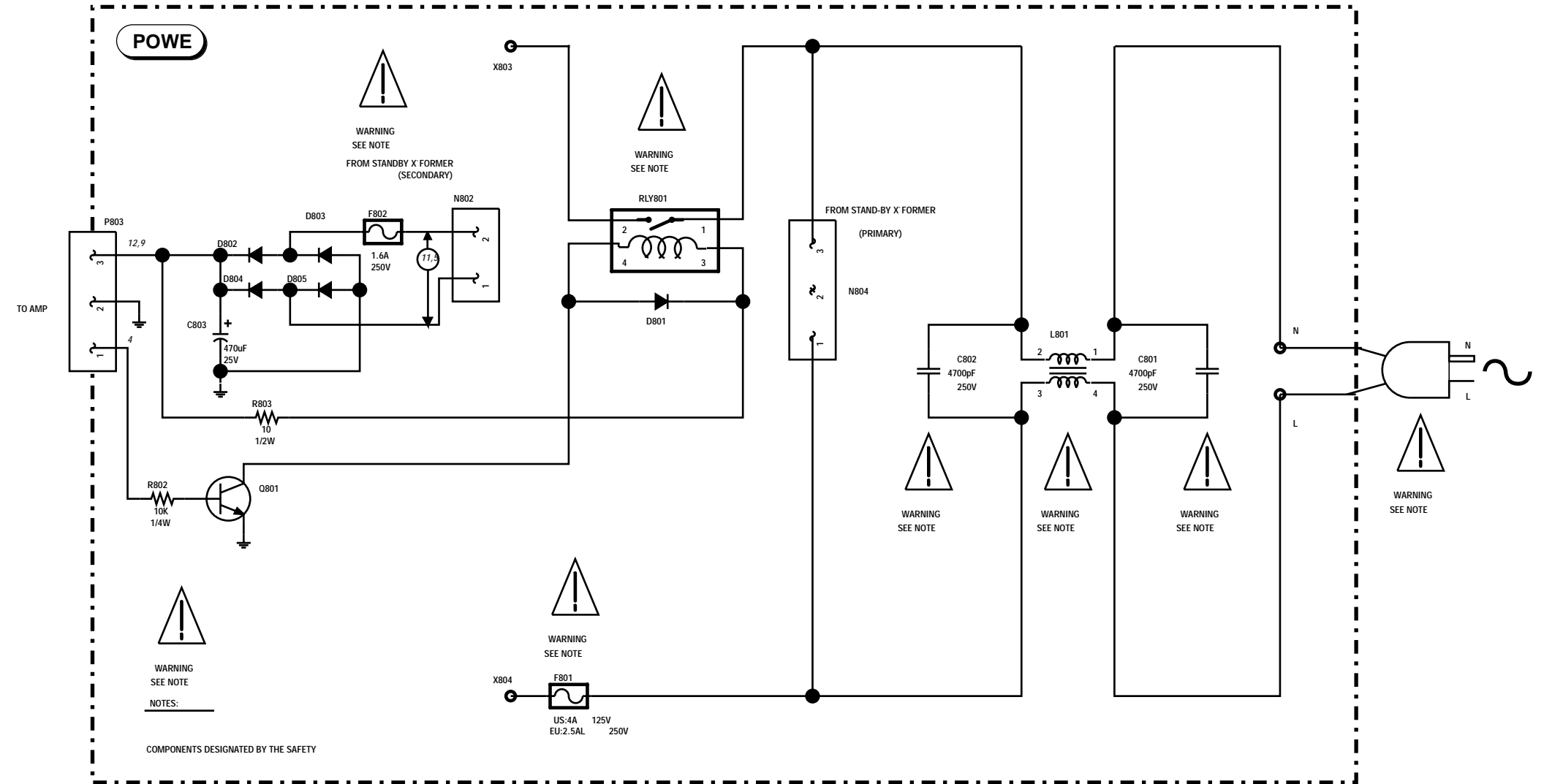


MAIN SCHEMATIC DIAGRAM - SCHEMA DE LA PLATINE PRINCIPALE - SCHALTBILD GRUNDPLATTE - SCHEMA DELLA PIASTRA PRINCIPALE - ESQUEMA DE LA PLATINA PRINCIPAL
(TAPE AND INPUT/OUTPUT PART)



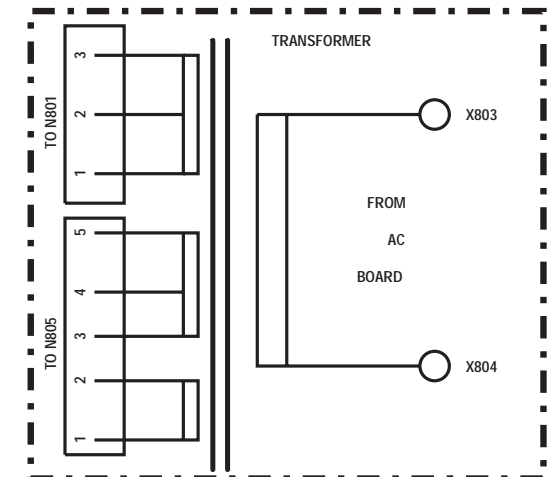
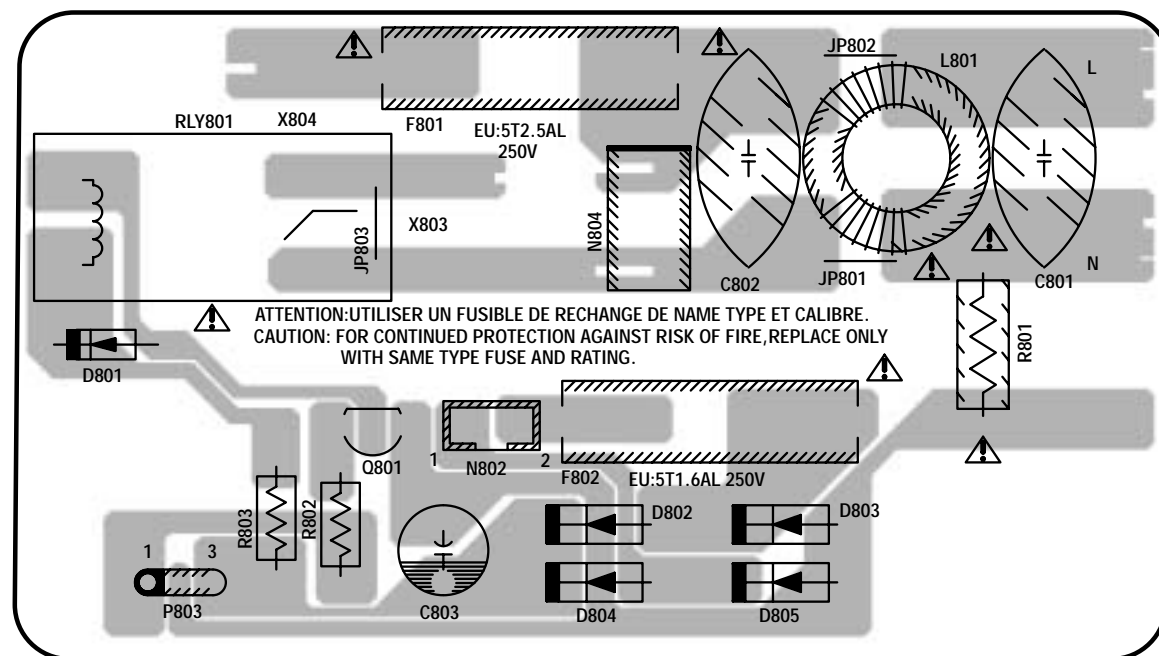


POWER SUPPLY SCHEMATIC DIAGRAM - SCHEMA DE L'ALIMENTATION - SCHALTBILD NETZTEIL - SCHEMA DELL' ALIMENTAZIONE - ESQUEMA DE LA ALIMENTACIÓN

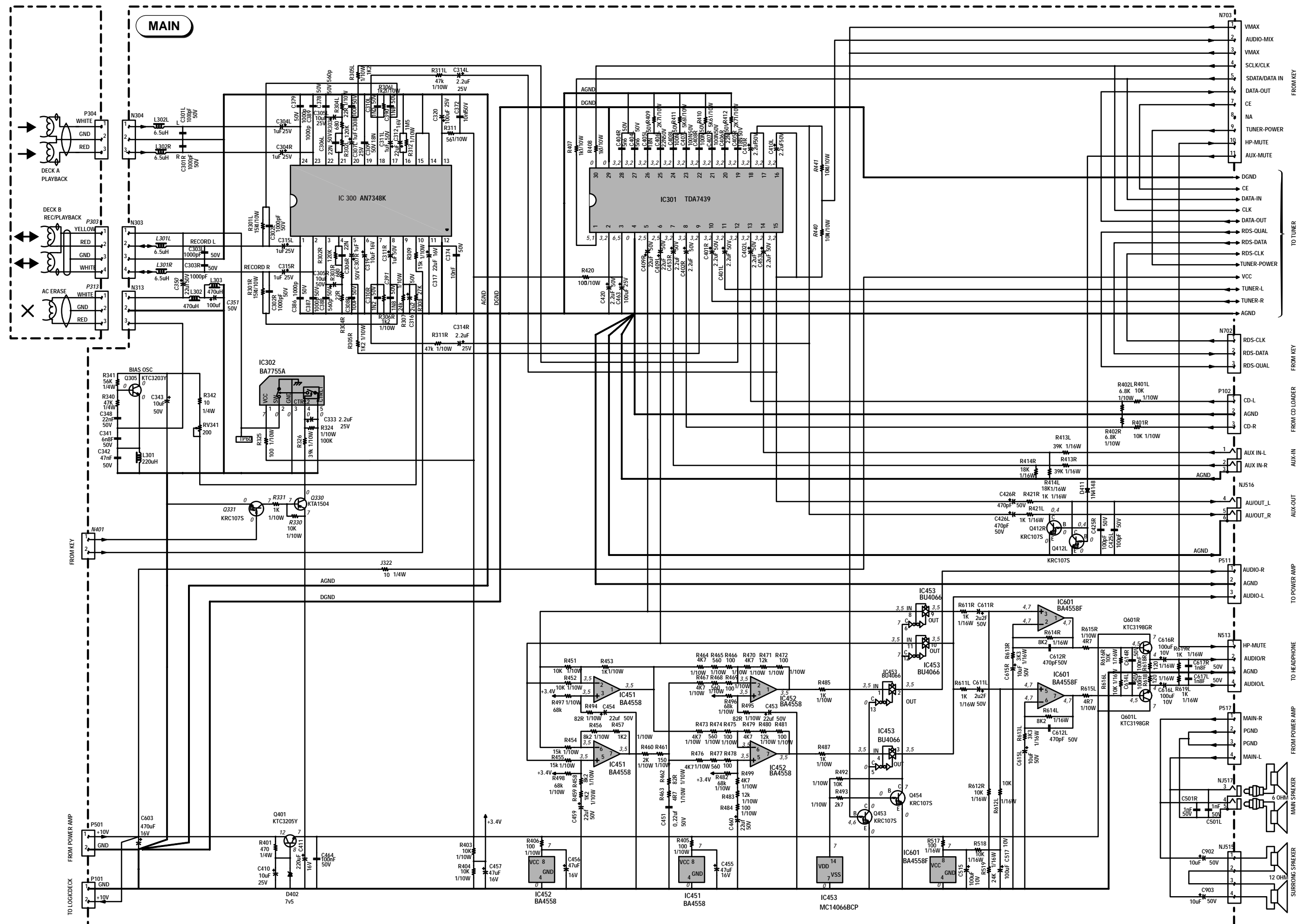


Power unit P.C.B.
Platine secteur
Ltpl. Netzanschluss
Piastra di rete
Platina de red

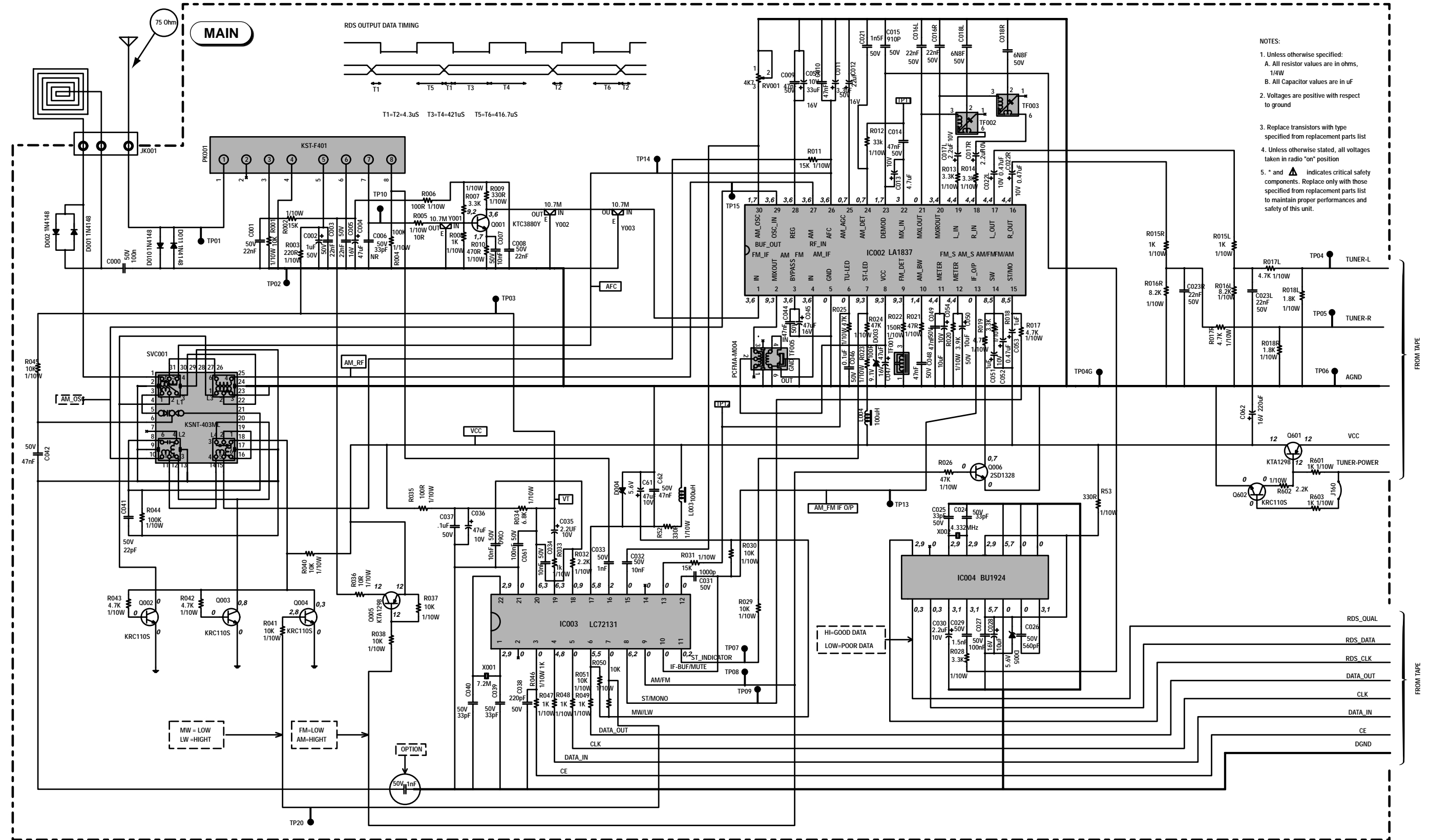
Component side
Côté composants
Bestückungsseite
Lato componenti
Lado componentes



MAIN SCHEMATIC DIAGRAM - SCHEMA DE LA PLATINE PRINCIPALE - SCHALTBILD GRUNDPLATTE - SCHEMA DELLA PIASTRA PRINCIPALE - ESQUEMA DE LA PLATINA PRINCIPAL
(TAPE AND INPUT/OUTPUT PART)



MAIN SCHEMATIC DIAGRAM - SCHEMA DE LA PLATINE PRINCIPALE - SCHALTBILD GRUNDPLATTE - SCHEMA DELLA PIASTRA PRINCIPALE - ESQUEMA DE LA PLATINA PRINCIPAL (TUNER PART)



12,5



10 M Ω

PARTS LIST
LISTE PIECES DETACHEES
ERSATZTEILLISTE
LISTA PARTI DI RICAMBIO
LISTA DE PIEZAS DE REPUESTO



THOMSON

A3580

Chassis CRKD2554

MODULES

MAIN	MAIN	R	55345400
AMPL	AMPLI	R	55345390
KDB	DISPLAY/CONTROL	R	55356990
MP3	MP3	R	55146990
POWE	POWER	R	55212500
SVB	CDM5B DRIVER	R	55140150



IC01,02	FAN8082	△	55116380
IC03	KIA7805API		55123960
IC04	M74HCT32B1R		55144850
IC002	LA1837		20884080
IC003	LC72131		20884060
IC004	BU1924F FLAT		55048400
IC1	TMS320VC5416PGE160 FLAT		55090810
IC2	WM8725D FLAT		35122460
IC3	M29W800AT90N1 FLAT		55136720
IC4,601	BA4558F FLAT		20976940
IC5	TPS76316DBVR FLAT		55148930
IC6	TPS76333DBVR FLAT		55143040
IC300	AN7348K		20693340
IC301	TDA7439		35096300
IC302	BA7755A		10214460
IC501	LM4766T		55056260
IC701	UPD780208GF-145-3BA FLAT		5532310A
IC702,704	BU4094BCF FLAT		35045600
IC703	M24C64-WMN6 FLAT		55131810
IR701	GP1U281R		55144890



ICP01	PSR-5		55173540
PI01,02,03,05,06	RPI-574		20586840
PI04	GP2S28		20556130
Q001	KTC3880 O SMD		55050950
Q002,003,004,006,1,2,3,501,502,504,505,514,518,519,	KTC3875GR SMD		20779850

602,702,703,705,706,707,708,710,711,712			
Q003	KTA1273Y/KTA966Y		10448970
Q004,601L,601R	KTC3198GR		20508070
Q005,601	KTA1298Y SMD		55050930
Q305,401,701,801	KTC3203Y/KTC2120Y		20538220
Q327	KTA1271Y		20685080
Q328,331,412L,412R	KRC107S SMD		55051240
Q330	KTA1504GR SMD		20779750
Q503,516	KTA1504Y		20970480
Q513A	2SD2012		10221820
Q517	2SK117Y		35095520
Q704,709	2SA950Y		20534440



D1	1SS355 SMD		20726770
D001,002,010,011,411,501,503,707,708,709,710,711,712,715,717,718,719,720,727,728,801,802	1N4148		44009209
D001,002,004,005,701,730	1N5232B 5.6V		20414280
D003	1N5239B		20454630
D003,004,005,006,729,802,803,804,805	1N4002		11070780
D402,513	BZX55C7V5		80444150
D502	BZX85C12		70437720
D505,506,507,508	1N5402		55041640
D509,510,511,512,515	1N4001		16008160
D514	BZX85C30		30948640
D705	L314-SRD LED		20971500



X001	7M2HZ		10281350
X002	4M332HZ		55050710
Y1	11M2896HZ		55150080
Y001,002,003	10M7HZ		20702430
Y701	4M19HZ		20776150



L801			70182000
SVC001			55070600
TF001	10M7HZ		55070590
TF002,003	14K0HZ		55070620
TF005	455K0HZ		55070610



EN701			55064450
RV001,340	4K7 OHM		10368440
RV341	200R0 OHM		20498490



R003,004	2R2 OHM 5% 0,25W	△	15009870
----------	------------------	---	----------



C801,802	4N7F 20% 250V	△	20677520
----------	---------------	---	----------



POWER		△	55302620
STAND-BY		△	55272830

R : RECYCLED PART
: PIECE RECYCLEE
: AUSTAUSCHTEILE
: RICAMBIO RICICLATO
: MODULO REPROCESADO

For any requests, please contact THOMSON multimedia after sales service area
 Pour toutes précisions, contactez votre service apres vente local THOMSON multimedia
 Für weitere Auskünfte, wenden Sie sich bitte an die THOMSON multimedia Kundendienst
 Per precisazioni, contattate l'assistenza tecnica THOMSON multimedia
 Para cualquier pregunta, por favor contactar con el responsable de zona del servicio postventa de THOMSON multimedia

VERSION 1 09 / 2002 35661850
VERSION 2 00 / 0000

**OTHER PARTS
AUTRES PIECES
SONSTIGE TEILE
ALTRE PARTI
OTRAS PIEZAS**

F503,504	4AT 250V TIME LAG FUSE 4AT 250V FUSIBLE TEMPORISE 4AT 250V SICHERUNG 4AT 250V FUSIBILE TEMPORIZZATO 4AT 250V FUSIBLE TEMPORIZADO	△ 35057960
F505,802	1A6T 250V TIME-LAG FUSE 1A6T 250V FUSIBLE TEMPORISE 1A6T 250V SICHERUNG 1A6T 250V FUSIBILE TEMPORIZZATO 1A6T 250V FUSIBLE TEMPORIZADO	△ 48064700
F801	2A5T 250V TIME-LAG FUSE 2A5T 250V FUSIBLE TEMPORISE 2A5T 250V SICHERUNG 2A5T 250V FUSIBILE TEMPORIZZATO 2A5T 250V FUSIBLE TEMPORIZADO	△ 10246750
FL701	DISPLAY LCD AFFICHEUR LCD LCD-ANZEIGE VISUALIZZATORE LCD VISUALIZADOR LCD	55298070
JK001	ANTENNA SOCKET FM PRISE ANTENNE FM ANTENNENBUCHSE FM PRESA ANTENNA FM TOMA DE ANTENA FM	55050620
NJ501	LOUDSPEAKER SOCKET PRISE HAUT PARLEUR LAUTSPRECHERBUCHSE PRESA ALTOPARLANTE TOMA HEMBRA ALTAVOZ	10284650
NJ504	JACK SOCKET PRISE JACK BUCHSE PRESA JACK TOMA JACK	20369030
NJ515	LOUDSPEAKER SOCKET PRISE HAUT PARLEUR LAUTSPRECHERBUCHSE PRESA ALTOPARLANTE TOMA HEMBRA ALTAVOZ	55060580
NJ516	CINCH SOCKET PRISE CINCH CHINCH-BUCHSE PRESA CINCH TOMA CINCH	55080550
OP01	OPTICAL SOCKET PRISE OPTIQUE BUCHSE PICK-UP PRESA OTTICA TOMA OPTICO	55035050
PK001	IF HEAD TETE FI Z-F PLATTE TUNER FI SINTONIZADOR FI	55071960
RAY1	RELAY 12V 3A RELAIS 12V 3A RELAY 12V 3A RELEE 12V 3A RELEE 12V 3A	△ 55048920
RLY801	SDT-S-112LMR RELAY 12V SDT-S-112LMR RELAIS 12V SDT-S-112LMR RELAYS 12V SDT-S-112LMR RELEE 12V SDT-S-112LMR RELEE 12V	△ 35095470

SW701,702, 703,704,705, 706,707,708, 711,712,713, 714,715,716, 717,718,721, 722,731,732, 733,734,735, 736,737,738	MICROSWITCH MICROCONTACTEUR MIKROSCHALTER MICROINTERRUTTORE MICROCONTACTOR	20404730
---	--	----------

SW723,724, 725,726,727, 728	MICROSWITCH MICRO CONTACTEUR MIKROSCHALTER MICROINTERRUTTORE MICROCONTACTOR	55145270
-----------------------------------	---	----------

**EQUIPMENT/PRESENTATION
EQUIPEMENT/PRESENTATION
AUSSTATTUNG/GEHAUSE
PARTI VARIE
EQUIPO/PRESENTACION**

A3580 (REMOTE CONTROL) A3580 (TELECOMMANDE) A3580 (FERNBEDIENUNG) A3580 (TELECOMANDO) A3580 (TELEMANDO)		55348890
LOUDSPEAKER BOX ASSY RIGHT AND LEFT ENCEINTE ACOUSTIQUE GAUCHE ET DROITE LAUTSPRECHERBOX RECHTS UND LINKS CASSA ACUSTICA DESTRO E SINISTRO CAJA ACUSTICA DERECHA Y IZQUIERDA		55347610
LOUDSPEAKER BOX LEFT ENCEINTE ACOUSTIQUE GAUCHE LAUTSPRECHERBOX LINKS CASSA ACUSTICA SINISTRA CAJA ACUSTICA IZQUIERDA		35661840
LOUDSPEAKER BOX RIGHT ENCEINTE ACOUSTIQUE DROITE LAUTSPRECHERBOX RECHTS CASSA ACUSTICA DESTRA CAJA ACUSTICA DERECHA		35661830
FOLDING BOX EMBALLAGE CARTON KARTON IMBALLGGIO CARTONE EMBALAJE CARTON		55372010
FITTING FRONT CALE AVANT POLSTER VORN DISTANZIATORE ANTERIORE CALZO DELANTERA		55121820
FITTING REAR CALE ARRIERE POLSTER HINTEN DISTANZIATORE POSTERIORE CALZO TRASERA		55354990
MULTIMEDIA CD ROM MULTIMEDIA CD ROM MULTIMEDIA CD ROM MULTIMEDIA CD ROM MULTIMEDIA CD ROM		55317030
AM ANTENNA ANTENNE AM AM ANTENNE ANTENNA AM ANTENA AM		20690640
AM ANTENNA HOLDER SUPPORT ANTENNE AM AM ANTENNENHALTER SUPPORTO ANTENNA AM SOPORTE ANTENA AM		20690520
POWER SUPPLY LEAD CORDON D'ALIMENTATION NETZKABEL CAVO DI ALIMENTAZIONE CABLE DE ALIMENTACION		△ 10260820

**MECHANISM
MECANIQUE
MECHANIK
MECCANICA
MECANISMO**

TCM150-2 + 5CD MECHANISM ASSY TCM150-2 + MECANISME 5CD EQUIPE TCM150-2 + 5CD-WECHSLER K.P.L TCM150-2 + MECCANISMO 5CD COMPLETO TCM150-2 + MECANISMO 5CD EQUIPADO		55356390
TCM150-2 OPTICAL PLAYER TCM150-2 LECTEUR OPTIQUE TCM150-2 CD-LAUFWERK TCM150-2 ASSIEME OTTICA TCM150-2 MECANISMO OPTICO		10737970
CASSETTE MECHANISM MECANIQUE CASSETTE CASSETTENLAUFWERK MECCANICA CASSETTA MECANISMO CASSETTE		55377890
RUBBER BELT (MOTOR) D:36,5MM COURROIE CAOUTCHOUC (MOTEUR) D:36,5MM ANTRIEBSRIEMEN (MOTOR) D:36,5MM CINGHIA DI GOMMA (MOTORE) D:36,5MM CORREA DE GOMA (MOTOR) D:36,5MM		55073350
RUBBER BELT (TABLE) D:23MM COURROIE CAOUTCHOUC (POS.PLATEAU) D:23MM ANTRIEBSRIEMEN (TELLER) D:23MM CINGHIA DI GOMMA (PIATTO) D:23MM CORREA DE GOMA (PLATO) D:23MM		20710160
BUSH RUBBER CD FRONT AMORTISSEUR CAOUTCHOUC CD AVANT DAEMPFER GUMMI CD VORN AMMORTIZZATORE DI GOMMA CD ANTERIORE AMORTIGUADOR DE GOMA CD DELANTERA		20446740
BUSH RUBBER CD REAR AMORTISSEUR CAOUTCHOUC CD ARRIERE DAEMPFER GUMMI CD HINTEN AMMORTIZZATORE DI GOMMA CD POSTERIORE AMORTIGUADOR DE GOMA CD TRASERA		20365070

**ACCESSORIES
ACCESSOIRES
ZUBEHOER
ACCESSORI
ACCESORIOS**

LC20 CD DVD CD-ROM LENS CLEANER LC20 NETTOYEUR DE LENTILLE CD DVD CD-ROM LC20 LINSREINIGER FÜR CD DVD CD-ROM LC20 PULITORE PER LENTI DI CD DVD CD-ROM LC20 LIMPIADOR DE LENTE CD DVD CD-ROM		35128640
---	--	----------



A3580 UM TH A3580 NU TH A3580 BA TH A3580 IU TH A3580 IU TH		55372000
A3580 PARTS LIST A3580 LISTE DE PIECES DETACHEES A3580 ERSATZTEILLISTE A3580 LISTA PARTI DI RICAMBIO A3580 LISTA DE PIEZAS DE REPUESTO		35661850
CRKD2554 SERVICE MANUAL CRKD2554 DOCUMENTATION TECHNIQUE CRKD2554 TECHNISCHE DOKUMENTATION CRKD2554 DOCUMENTAZIONE TECNICA CRKD2554 DOCUMENTACION TECNICA		35657100

**CHASSIS AND PRESENTATION
CHASSIS ET PRESENTATION
CHASSIS UND GEHAEUSETEILE
TELAIO E DI PRESENTAZIONE
CHASIS Y PRESENTACION**

040	FRONT PANEL FACADE FRONTPLATTE PANNELLO FRONTALE PANEL FRONTAL	55342140
060	SIDE PANEL LEFT PANNEAU LATERAL GAUCHE SEITENTEIL LINKS PANNELLO LATERALE SINISTRO PANEL LATERAL IZQUIERDO	55123620
070	SIDE PANEL RIGHT PANNEAU LATERAL DROIT SEITENTEIL RECHTS PANNELLO LATERALE DESTRO PANEL LATERAL DERECHO	55123560
100	CASSETTE FLAP DOOR LEFT VOLET CASSETTE GAUCHE CASSETTENKLAPPE LINKS SPORTELLLO CASSETTA SINISTRO TAPA CASSETTE IZQUIERDO	55234160
110	CASSETTE FLAP DOOR RIGHT VOLET CASSETTE DROIT CASSETTENKLAPPE RECHTS SPORTELLLO CASSETTA DESTRO TAPA CASSETTE DERECHO	55234170
120	TRAY CD VOLET CD CD KLAPPE SPORTELLLO CD TAPA CD	55221430
210	VOLUME KNOB BOUTON VOLUME LAUTSTAERKEKNOPF TASTO VOLUME TECLA VOLUMEN	55323630
270	BUTTON B.BOOST/VOLUME RING BAGUE TOUCHE B.BOOST/VOLUME TASTE B.BOOST/VOLUME RING TASTO B.BOOST/VOLUME ANELLO TECLA B.BOOST/VOLUME ANILLO	55160390
280	CONTROL PANEL TABLEAU DE COMMANDES BEDIENTEIL QUADRO DI COMANDO TABLERO DE MANDO	55342220
290	CASSETTE FLAP DOOR TRIM LEFT ENJOLIVEUR VOLET CASSETTE GAUCHE ZIERRHMEN CASSETTENKLAPPE LINKS FINIZIONE SPORTELLLO CASSETTA SINISTRO EMBELLECEDOR TAPA CASSETTE IZQUIERDO	55266850
300	CASSETTE FLAP DOOR TRIM RIGHT ENJOLIVEUR VOLET CASSETTE DROIT ZIERRHMEN CASSETTENKLAPPE RECHTS FINIZIONE SPORTELLLO CASSETTA DESTRO EMBELLECEDOR TAPA CASSETTE DERECHO	55266860
310	UPPER FLAP VOLET SUPERIEUR OBEN KLAPPE SPORTELLLO SUPERIORE TAPA SUPERIOR	55221720
320	CASSETTE FLAP WINDOW LEFT GLACE VOLET CASSETTE GAUCHE FENSTER CASSETTENKLAPPE LINKS VETRO SPORTELLLO CASSETTA SINISTRO CRISTAL TAPA CASSETTE IZQUIERDO	55321850
330	CASSETTE FLAP WINDOW RIGHT GLACE VOLET CASSETTE DROIT FENSTER CASSETTENKLAPPE RECHTS VETRO SPORTELLLO CASSETTA DESTRO CRISTAL TAPA CASSETTE DERECHA	55321860

340	UPPER FLAP WINDOW GLACE VOLET SUPERIEUR FENSTER OBEN KLAPPE VETRO DEL SPORTELLLO SUPERIORE CRISTAL DEL TAPA SUPERIOR	55234620
350	TRAY CD WINDOW GLACE VOLET CD FENSTER CD KLAPPE VETRO DEL SPORTELLLO CD CRISTAL DEL TAPA CD	55342160
480	CASSETTE DOOR DAMPER GEAR ROUE DENTEE PORTE CASSETTE ZAHNRAD CASSETTENHALTER RUOTA DENTATA PORTACASSETTA RUEDA DENTADA PORTACASSETTE	20688960
880	BUTTON 4 DIRECTIONS TOUCHE 4 DIRECTIONS TASTE 4 RICHTUNGS TASTO 4 DIREZIONES TECLA 4 DIRECCIONS	55310730
910	PLAYLIST BUTTON TOUCHE PLAYLIST PLAYLIST TASTE TASTO PLAYLIST TECLA PLAYLIST	55310750
930	O.K. BUTTON O.K. TASTE TOUCHE O.K. TASTO O.K. TECLA O.K.	55310780
940	CD DISPLAY BUTTON TOUCHE CD DISPLAY CD DISPLAY TASTE TASTO CD DISPLAY TECLA CD DISPLAY	55310810
950	FILE SEARCH BUTTON TOUCHE FILE SEARCH FILE SEARCH TASTE TASTO FILE SEARCH TECLA FILE SEARCH	55310840
960	SUPPORT BUTTONS SUPPORT DE TOUCHES HALTER KUNSTSTOFF SUPPORTO TASTI SOPORTE TECLAS	55310850
980	DISPLAY WINDOW GLACE AFFICHEUR ANZEIGEFENSTER VETRO DEL VISUALIZZATORE CRISTAL DEL VISUALIZADOR	55342170

**CHASSIS AND PRESENTATION 2
CHASSIS ET PRESENTATION 2
CHASSIS UND GEHAEUSETEILE 2
TELAIO E DI PRESENTAZIONE 2
CHASIS Y PRESENTACION 2**

CDM5	TCM150-2 + 5CD MECHANISM ASSY TCM150-2 + MECANISME 5CD EQUIPE TCM150-2 + 5CD-WECHSLER K.P.L TCM150-2 + MECCANISMO 5CD COMPLETO TCM150-2 + MECANISMO 5CD EQUIPADO	55356390
080	REAR PANEL PANNEAU ARRIERE SEITENTEIL HINTEN PANNELLO POSTERIORE PANEL POSTERIOR	55348430
090	UPPER CASE COFFRET SUPERIEUR GEHAEUSE OBEN CASSA SUPERIORE CAJA SUPERIOR	55275150

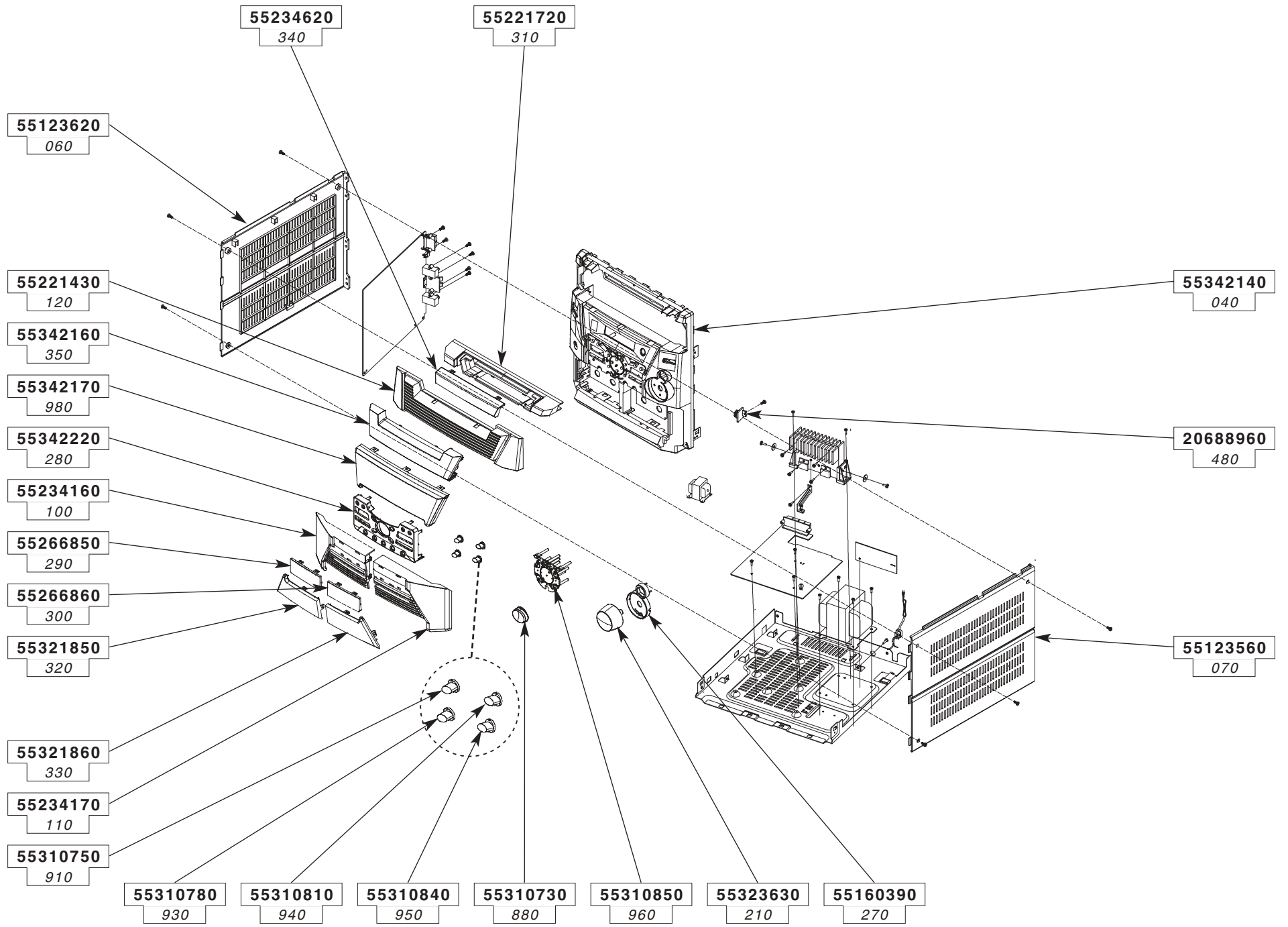
130	SPRING TORSION CASSETTE RIGHT RESSORT VOLET CASSETTE DROIT NADELFEDER CASSETTENKLAPPE RECHTS MOLLA PORTACASSETTA DESTRO RESORTE PORTACASSETTE DERECHO	55113730
140	SPRING TORSION CASSETTE LEFT RESSORT VOLET CASSETTE GAUCHE NADELFEDER CASSETTENKLAPPE LINKS MOLLA PORTACASSETTA SINISTRO RESORTE PORTACASSETTE IZQUIERDO	55113720
220	BUTTON STRIP ROCK-CUSTOM-JAZZ BARRETTE TOUCHES ROCK-CUSTOM-JAZZ TASTENLEISTE ROCK-CUSTOM-JAZZ PIATTINA TASTI ROCK-CUSTOM-JAZZ PLACA DE TECLAS ROCK-CUSTOM-JAZZ	55310690
230	BUTTON STRIP DISC CD BARRETTE DE TOUCHES SELECTION DISQUE TASTENLEISTE AUSWAHL LASERPLATTE PIATTINA TASTI SELEZIONE DEL DISCOS PLACA DE TECLAS SELECCION DE DISCOS	55266820
240	B.BOOST BUTTON TOUCHE B.BOOST TASTE B.BOOST TASTO B.BOOST TECLA B.BOOST	55111040
250	TRAY CONTROL BUTTON TOUCHE CDE TIROIR CD CD SCHUBEINHEIT TASTE TASTO COMANDI PORTA-DISCHI TECLA MANDOS PORTADISCO	55323640
260	ON/OFF BUTTON TOUCHE MARCHE/ARRET EIN-AUS TASTE TASTO ACCESO/SPENTO TECLA MARCHA/PARADA	55355090
335	UPPER CASE WINDOW GLACE COFFRET SUPERIEUR FENSTER GEHAEUSE OBEN VETRO DEL CASSA SUPERIORE CRISTAL DEL CAJA SUPERIOR	55327670
360	CRYSTAL B.BOOST GLACE B.BOOST FENSTER B.BOOST VETRO B.BOOST CRISTAL B.BOOST	55286690
390	CASSETTE HOLDER LEFT PORTE CASSETTE GAUCHE CASSETTENHALTER LINKS PORTACASSETTA SINISTRO PORTACASSETTE IZQUIERDO	55234660
400	CASSETTE HOLDER RIGHT PORTE CASSETTE DROIT CASSETTENHALTER RECHTS PORTACASSETTA DESTRO PORTACASSETTE DERECHO	55234670
560	CASSETTE MECHANISM MECANIQUE CASSETTE CASSETTENLAUFWERK MECCANICA CASSETTA MECANISMO CASSETTE	55377890
850	X-SURROUND BUTTON TOUCHE X-SURROUND X-SURROUND TASTE TASTO X-SURROUND TECLA X-SURROUND	55310720
900	BUTTON STRIP 6 KEYS LEFT BARRETTE DE 6 TOUCHES GAUCHE TASTENLEISTE 6 TASTE LINKS PIATTINA 6 TASTI SINISTRO PLACA DE 6 TECLAS IZQUIERDA	55460910
920	BUTTON STRIP 6 KEYS RIGHT BARRETTE DE 6 TOUCHES DROITE TASTENLEISTE 6 TASTE RECHTS PIATTINA 6 TASTI DESTRO PLACA DE 6 TECLAS DERECHA	55310680

**CD MECHANISM
MECANIQUE CD
CD MECHANIK
MECCANISMO CD
MECANICA CD**

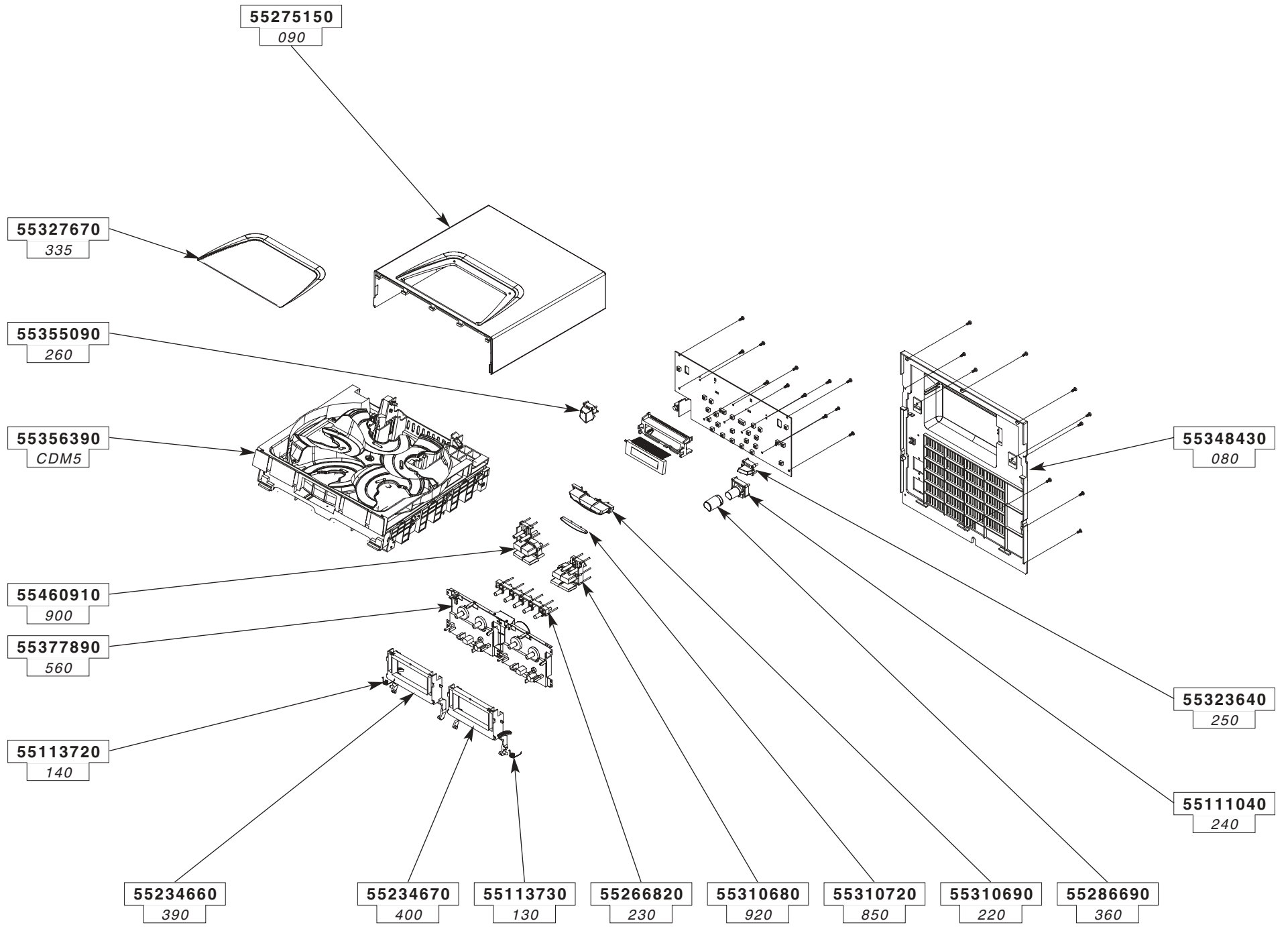
03	SPRING RESSORT FEDER MOLLA RESORTE	20979850
04	GEAR MAIN ROUE DENTEE PRINCIPALE HAUPT-ZAHNRAD RUOTA DENTATA PRINCIPAL RUEDA DENTADA PRINCIPALE	20979800
05	GEAR PIVOT ENGENRAGE PIVOT ZAHNRAD DREHPUNKT PIGNONE PERNO PINON PIVOTE	20979830
06	DUAL GEAR WHEEL DOUBLE ROUE DENTEE DOPPELT ZAHNRAD DOPPIO RUOTA DENTATA DOBLE RUEDA DENTADA	20979760
07	SWING ARM BRAS PIVOT ARM,DREHPUNKT BRACCIO PERNO BRAZO PIVOTE	20979940
09	GEAR CLUTCH ROUE D'EMBRAYAGE RAD KUPPLUNG RUOTA DI FRIZIONE RUEDA DE EMBRAGUE	20979750
10	SLIDING ROLLER PATIN GLISSANT RUTSCHIG ROLL PATTINO SCIVOLOSO PATIN RESBALADIZO	20979950
11	GEAR WHEEL ROUE DENTEE ZAHNRAD RUOTA DENTATA RUEDA DENTADA	20979790
12	DUAL GEAR DOUBLE ENGENRAGE DOPPELT ZAHNRAD DOPPIO PIGNONE DOBLE PINON	20979770
13	INTERMEDIATE GEAR WHEEL POULIE INTERMEDIAIRE DENTEE ZWISCHENZAHNRAD PULEGGIA INTERMEDIA DENTATA POLEA INTERMEDIA DENTADA	20979840
14	MOTOR PULLEY TRAY/TABLE CD POULIE MOTEUR TIROIR/PLATEAU CD MOTORROLLE SCHUBLADE/TELLER CD PULEGGIA DEL MOTORE CASSETTO/ PIATTO CD POLEA DE MOTOR CORREDERA/PLATO CD	20979870
15	GUIDE RAIL GUIDE RAIL FUEHRUNGSSCHIENE EINFAEDELN CONTROROTAIA CONTRACARRIL	20979740
16	MAIN GEAR TORSION SPRING RESSORT A EPINGLE ROUE PRINCIPALE HAUPT-ZAHNRAD NADELFEDER MOLLA DI TORSIONE RUOTA PRINCIPAL RESSORTE HORQUILLA RUEDA PRINCIPALE	20979810

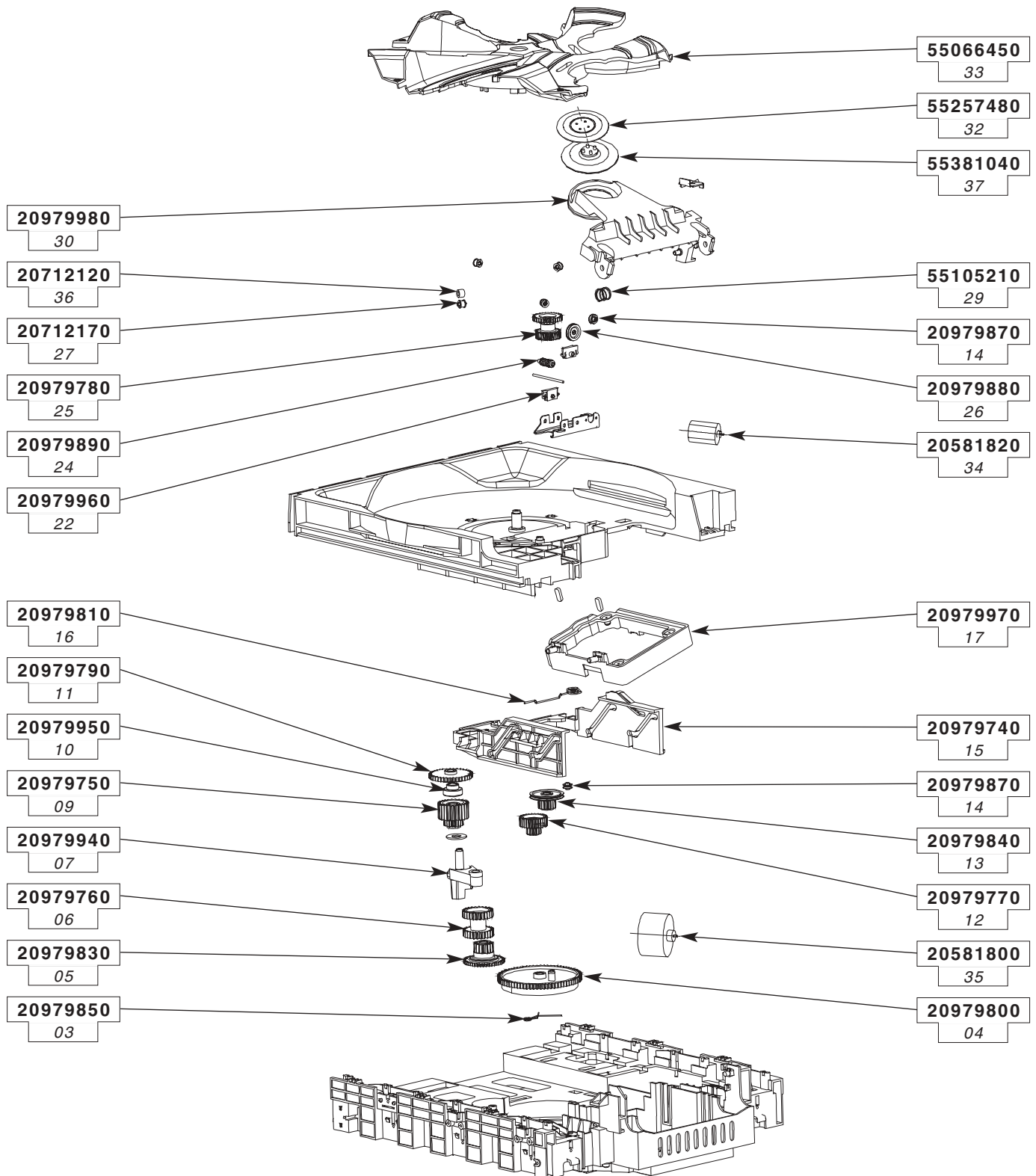
17	OPTICAL PLAYER BRACKET SUPPORT LECTEUR OPTIQUE CD-LAUFWERK HALTER SUPPORTO ASSIEME OTTICA SOPORTE MECANISMO OPTICO	20979970
22	THREADED END-FITTING EMBOUT PLASTIQUE MUFFENTUELLE GHIERA DI PLASTICA CONTERA PLASTICA	20979960
24	INTERMEDIATE SPINDLE AXE INTERMEDIAIRE ZWISCHENACHSE SPINOTTO INTERMEDIO EJE INTERMEDIO	20979890
25	DUAL GEAR WHEEL DOUBLE ROUE DENTEE DOPPELT ZAHNRAD DOPPIO RUOTA DENTATA DOBLE RUEDA DENTADA	20979780
26	PULLEY POULIE ROLLE PULEGGIA POLEA	20979880
27	RUBBER ROLLER BRACKET SUPPORT GALET CAOUTCHOU GUMMIROLLE HALTER SUPPORTO RULLO DI GOMMA SOPORTE RODILLO DE GOMA	20712170
29	SPRING RESSORT SPRUNGFEDER MOLLA MUELLE	55105210
30	ARM, PLASTIC BRAS PLASTIQUE ARM, KUNSTSTOFF BRACCIO IN PLASTICA BRAZO PLASTICO	20979980
32	CD LOCK MAGNET VERROU AIMANT CD RIEGEL MAGNET CD CHIUSURA MAGNETE CD CERROJO IMAN CD	55257480
33	TABLE 5 CD PLATEAU 5 CD TELLER 5 CD PIATTO 5 CD PLATO 5 CD	55066450
34	FF-130SH-14230 MOTOR DC FF-130SH-14230 MOTEUR DC FF-130SH-14230 MOTOR DC FF-130SH-14230 MOTORE DC FF-130SH-14230 MOTOR DC	20581820
35	RF-500TB MOTOR DC RF-500TB MOTEUR DC RF-500TB MOTOR DC RF-500TB MOTORE DC RF-500TB MOTOR DC	20581800
36	RUBBER ROLLER GALET CAOUTCHOU GUMMIROLLE RULLO DI GOMMA RODILLO DE GOMA	20712120
37	HOLDER MAGNET SUPPORT AIMANT HALTER MAGNET SUPPORTO MAGNETE SOPORTE IMAN	55381040

CHASSIS AND PRESENTATION / CHASSIS ET PRESENTATION / CHASSIS UND GEHAEUSETEILE /
TELAIO E DI PRESENTAZIONE / CHASIS Y PRESENTACION



CHASSIS AND PRESENTATION 2 / CHASSIS ET PRESENTATION 2 / CHASSIS UND GEHAEUSETEILE 2 /
TELAIO E DI PRESENTAZIONE 2 / CHASIS Y PRESENTACION 2





**CD MECHANISM / MECANIQUE CD / CD MECHANIK /
MECCANISMO CD / MECANICA CD**

A3580

7/7

The description and characteristics given here are of informative significance only, and non committal. To keep up the high quality of our products, we reserve the right to make any changes or improvement without previous notice. • Les descriptions et caractéristiques figurant sur ce document sont données à titre d'information et non d'engagement. En effet, soucieux de la qualité de nos produits, nous nous réservons le droit d'effectuer, sans préavis, toute modification ou amélioration. • Die Beschreibungen und Daten in dieser Anleitung dienen nur zur Information und sind nicht bindend. Um die Qualität unserer Produkte ständig zu verbessern, behalten wir uns das Recht auf Änderungen vor. • Le descrizioni e le caratteristiche date su questo documento sono fornite a semplice titolo informativo e senza impegno. Ci riserviamo il diritto di eseguire, senza preavviso, qualsiasi modifica o miglioramento. • Las descripciones y características que figuran en este documento se dan a título de información y no de compromiso. En efecto, en bien de la calidad de nuestros productos, nos reservamos el derecho de efectuar, sin previo aviso, cualquier modificación o mejora.