

**PARTS LIST
LISTE PIECES DETACHEES
ERSATZTEILLISTE
LISTA PARTI DI RICAMBIO
LISTA DE PIEZAS DE REPUESTO**



**THOMSON
AM1080
Chassis CRKD1290C**

MODULES

MAIN	MAIN	R	35215110
KDB	DISPLAY/CONTROL	R	35215120
POWE	POWER		35149230
RCPB	CASSETTE		35149220



IC101	LA1823		35149010
IC102	LC72131		20884060
IC201,202	TC4052BP		10403350
IC203	PT2256		35110910
IC301	TA8227P	△	10391350
IC601	UPD753016AGC-E87 FLAT		35110860
IC701	AN7312		35057270
REM601	RPM6938-V4		35090120



Q101	9018G		10403270
Q102,103,104, 201,202,205, 206,207,208, 209,210,306, 310,311,314, 601,602,604, 605,701,702, 703,704,705	2SC945P		35055330
Q116	2SA733P-T		10232490
Q301,302,312, 313,706	JE8050D		10235170
Q305,308	KSA928-Y/2SA928-Y		10400140
Q307	2SD2012	△	10221820



D101,102,201, 302,303,304, 305,306,307, 313,314,315, 316,601,602, 603,606,607, 609,610,611, 612,613,614, 615,616,617, 618,647,649, 650,701,702	1N4148		44009209
D103,104	SVC201SPA		35045740
D105	SVC348T		35149000
D318,319,401, 402,403,404	1N4001		16008160
D619	ELT-3143D LED		35094800
D639	ZPD4,7/BZX55C4V7		20475400
ZD034	BZX55C12V		30948800
ZD103	BZX55B5V1/ZPD5V1 2%		44035702
ZD301	BZX55C9V1		90578100
ZD305	BZX55C6V2 500MW		20475410



F101	10M7HZ		35055340
F102	450K0HZ		35055350
X101	10MHZ7 FILTER		35033390
X102	7M2MHZ		35094790
X602	6M0HZ		35094840



T102			10390930
T103			10390910
T701			35023590



R319	1R0 OHM 5% 0,25W	△	15009730
R326,502,503, 504	10R0 OHM 5% 0,25W	△	15009580



TC101	10POF		10390870
TC102	20PF TRIMMER CCTRIM		10390880



POWER		△	35149040
-------	--	---	----------

R : RECYCLED PART
: PIECE RECYCLEE
: AUSTAUSCHTEILE
: RICAMBIO RICICLATO
: MODULO REPROCESADO

For any requests, please contact THOMSON multimedia after sales service area
Pour toutes précisions, contactez votre service apres vente local THOMSON multimedia
Für weitere Aukünfte, wenden Sie sich bitte an die THOMSON multimedia Kundendienst
Per precisazioni, contattate l'assistenza tecnica THOMSON multimedia
Para cualquier pregunta, por favor contactar con el responsable de zona del servicio postventa de THOMSON multimedia

VERSION 1 05 / 2002 35215160
VERSION 2 00 / 0000

OTHER PARTS AUTRES PIECES SONSTIGE TEILE ALTRE PARTI OTRAS PIEZAS		
	HEADPHONE SOCKET PRISE CASQUE KOPFHOERERBUCHSE PRESA JACK TOMA JACK	35214620
D621	DISPLAY LCD AFFICHEUR LCD LCD-ANZEIGE VISUALIZZATORE LCD VISUALIZADOR LCD	35149030
F401	3A15T 250V TIME-LAG FUSE Δ 3A15T 250V FUSIBLE TEMPORISE 3A15T 250V SICHERUNG 3A15T 250V FUSIBILE TEMPORIZZATO 3A15T 250V FUSIBLE TEMPORIZADO	10119590
LM501,502, 503	LAMP 9V/100MA 1/4W AMPOULE 9V/100MA 1/4W LAMPE 9V/100MA 1/4W LAMPADA 9V/100MA 1/4W LAMPARA 9V/100MA 1/4W	35094850
SPK301	LOUDSPEAKER SOCKET PRISE HAUT PARLEUR LAUTSPRECHERBUCHSE PRESA ALTOPARLANTE TOMA HEMBRA ALTAVOZ	10494310
SW600	SLIDE SWITCH COMMUTATEUR SCHALTER COMMUTATORE CONMUTADOR	35094860
SW601,602, 603,604,605, 606,607,608, 609,610,611, 612,613,614, 615,616,617	MICROSWITCH MICRO CONTACTEUR MIKROSCHALTER MICROINTERRUPTORE MICROCONTACTOR	10449940
SW701	SWITCH COMMUTATEUR SCHALTER COMMUTATORE CONMUTADOR	10449930

EQUIPMENT/PRESENTATION EQUIPEMENT/PRESENTATION AUSSTATTUNG/GEHAEUSE PARTI VARIE EQUIPO/PRESENTACION		
	AM1080 (REMOTE CONTROL) AM1080 (TELECOMMANDE) AM1080 (FERNBEDIENUNG) AM1080 (TELECOMANDO) AM1080 (TELEMANDO)	35215150
	LOUDSPEAKER BOX ASSY RIGHT AND LEFT ENCEINTE ACOUSTIQUE GAUCHE ET DROITE LAUTSPRECHERBOX RECHTS UND LINKS CASSA ACUSTICA DESTRO E SINISTRO CAJA ACUSTICA DERECHA Y IZQUIERDA	35215130
	LOUDSPEAKER BOX RIGHT OR LEFT ENCEINTE ACOUSTIQUE GAUCHE OU DROITE LAUTSPRECHERBOX RECHTS ODER LINKS CASSA ACUSTICA SINISTRA O DESTRA CAJA ACUSTICA IZQUIERDA O DERECHA	35215140
	FITTING UPPER RIGHT CALE SUPERIEURE DROITE POLSTER OBEN RECHTS Distanziatore superiore destra CALZO SUPERIOR DERECHA	35145940
	FITTING UPPER LEFT CALE SUPERIEURE GAUCHE POLSTER OBEN LINKS Distanziatore superiore sinistra CALZO SUPERIOR IZQUIERDA	35145930
	FITTING DOWNER RIGHT CALE INFERIEURE DROITE POLSTER UNTEN RECHTS Distanziatore inferiore destra CALZO INFERIOR DERECHA	35145920
	FITTING DOWNER LEFT CALE INFERIEURE GAUCHE POLSTER UNTEN LINKS Distanziatore inferiore sinistra CALZO INFERIOR IZQUIERDA	35145910
	FOLDING BOX EMBALLAGE CARTON KARTON IMBALLAGGIO CARTONE EMBALAJE CARTON	55348590
	POWER SUPPLY LEAD CORDON D'ALIMENTATION NETZKABEL CAVO DI ALIMENTAZIONE CABLE DE ALIMENTACION	Δ 10260820

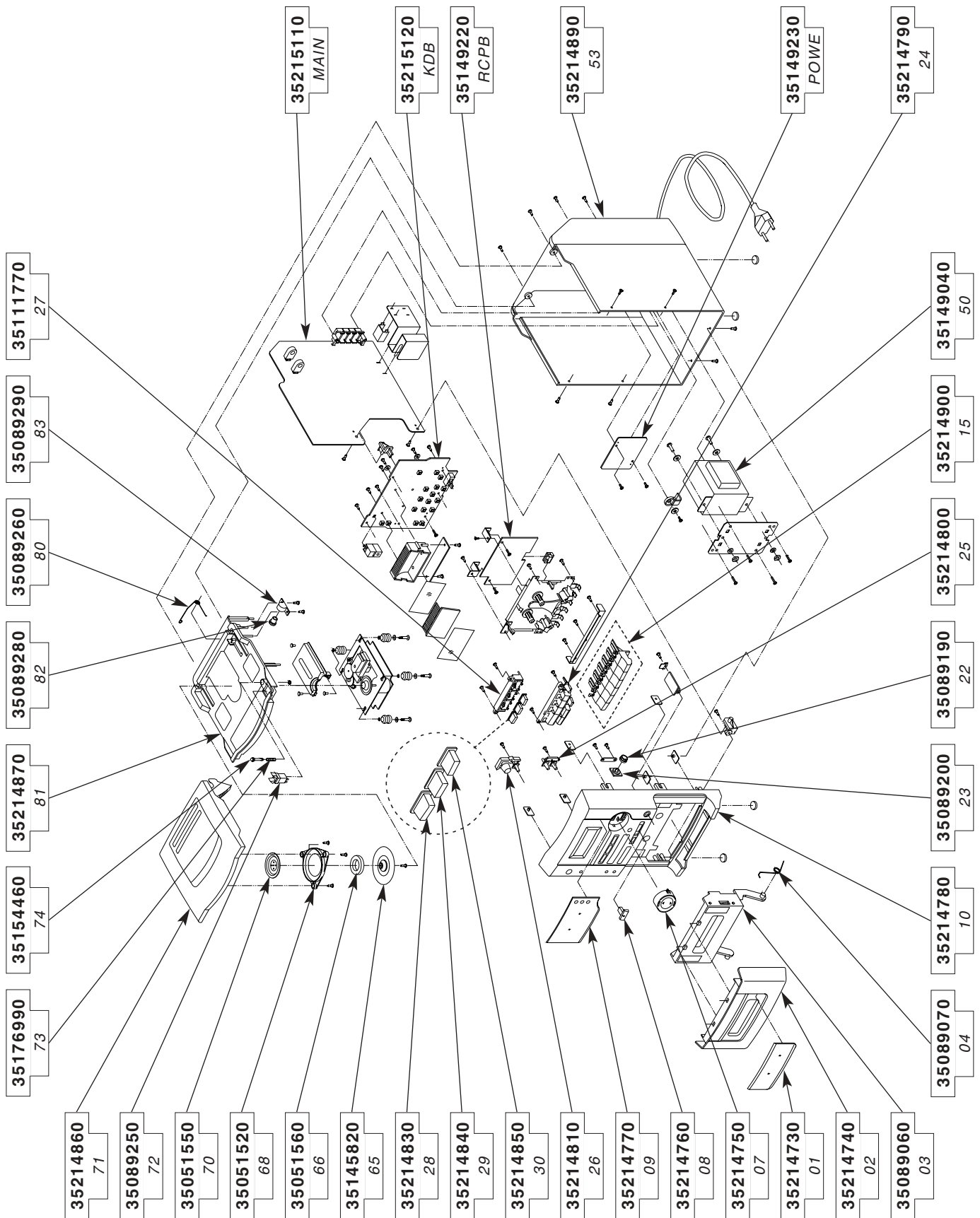
MECHANISM MECANIQUE MECHANIK MECCANICA MECANISMO		
	TCM130-2 OPTICAL PLAYER TCM130-2 LECTEUR OPTIQUE TCM130-2 CD-LAUFWERK TCM130-2 ASSIEME OTTICA TCM130-2 MECANISMO OPTICO	10648750
	CASSETTE MECHANISM MECANIQUE CASSETTE CASSETTENLAUFWERK MECCANICA CASSETTA MECANISMO CASSETTE	35110920
	BUSH RUBBER CD REAR AMORTISSEUR CAOUTCHOUC CD ARRIERE DAEMPER GUMMI CD HINTEN AMMORTIZZATORE DI GOMMA CD POSTERIORE AMORTIGUADOR DE GOMA CD TRASERA	35055560
	BUSH RUBBER CD FRONT AMORTISSEUR CAOUTCHOUC CD AVANT DAEMPER GUMMI CD VORN AMMORTIZZATORE DI GOMMA CD ANTERIORE AMORTIGUADOR DE GOMA CD DELANTERA	35051630
ACCESSORIES ACCESSOIRES ZUBEHOER ACCESSORI ACCESORIOS		
	LC20 CD DVD CD-ROM LENS CLEANER LC20 NETTOYEUR DE LENTILLE CD DVD CD-ROM LC20 LINSREINIGER FÜR CD DVD CD-ROM LC20 PULITORE PER LENTI DI CD DVD CD-ROM LC20 LIMPIADOR DE LENTE CD DVD CD-ROM	35128640
		
	AM1080 UM TH AM1080 NU TH AM1080 BA TH AM1080 IU TH AM1080 IU TH	55348490
	AM1080 PARTS LIST AM1080 LISTE DE PIECES DETACHEES AM1080 ERSATZTEILLISTE AM1080 LISTA PARTI DI RICAMBIO AM1080 LISTA DE PIEZAS DE REPUESTO	35215160
	CRKD1290C SERVICE MANUAL CRKD1290C DOCUMENTATION TECHNIQUE CRKD1290C TECHNISCHE DOKUMENTATION CRKD1290C DOCUMENTAZIONE TECNICA CRKD1290C DOCUMENTACION TECNICA	35215180

**CHASSIS AND PRESENTATION
CHASSIS ET PRESENTATION
CHASSIS UND GEHAEUSETEILE
TELAIO E DI PRESENTAZIONE
CHASIS Y PRESENTACION**

KDB	DISPLAY/CONTROL BOARD DISPLAY/CONTROL PLATINE DISPLAY/CONTROL PLATTE DISPLAY/CONTROL PIASTRA DISPLAY/CONTROL PLATINA	35215120
MAIN	MAIN BOARD MAIN PLATINE MAIN PLATTE MAIN PIASTRA MAIN PLATINA	35215110
POWE	POWER BOARD POWER PLATINE POWER PLATTE POWER PIASTRA POWER PLATINA	35149230
RCPB	CASSETTE BOARD CASSETTE PLATINE CASSETTE PLATTE CASSETTE PIASTRA CASSETTE PLATINA	35149220
01	CASSETTE FLAP WINDOW GLACE VOLET CASSETTE FENSTER CASSETTENKLAPPE VETRO SPORTELLINO CASSETTA CRISTAL TAPA CASSETTE	35214730
02	CASSETTE FLAP DOOR VOLET CASSETTE CASSETTENKLAPPE SPORTELLINO CASSETTA TAPA CASSETTE	35214740
03	CASSETTE HOLDER PORTE CASSETTE CASSETTENHALTER PORTACASSETTA PORTACASSETTE	35089060
04	SPRING TORSION HOLDER CASSETTE RESSORT A EPINGLE VOLET CASSETTE NADELFEDER CASSETTENKLAPPE MOLLA DI TORSIONE PORTACASSETTA RESORTE HORQUILLA PORTACASSETTE	35089070
07	VOLUME KNOB BOUTON VOLUME LAUTSTAERKEKNOPF ROTELLA DI PLASTICA VOLUME RUEDA PLASTICA MANDO VOLUMEN	35214750
08	MONO/STEREO SLIDE BUTTON MANETTE MONO/STEREO MONO/STEREO SCHIEBETASTE COMMANDO A CURSORE MONO/STEREO MANECILLA MONO/STEREO	35214760
09	DISPLAY WINDOW GLACE AFFICHEUR ANZEIGEFENSTER VETRO DEL VISUALIZZATORE CRISTAL DEL VISUALIZADOR	35214770
10	FRONT PANEL FACADE FRONTPLATTE PANNELLO FRONTALE PANEL FRONTAL	35214780
15	CASSETTE BUTTON ASSY ENSEMBLE DE TOUCHES CASSETTE TASTENEINHEIT CASSETTE ASSIEME TASTI CASSETTA CONJUNTO DE TECLAS CASSETTE	35214900
22	CASSETTE DOOR DAMPER GEAR ROUE DENTEE PORTE CASSETTE ZAHNRAD CASSETTENHALTER RUOTA DENTATA PORTACASSETTA RUEDA DENTADA PORTACASSETTE	35089190

23	GEAR WHEEL CASSETTE HOLDER SUPPORT ROUE DENTEE PORTE CASSETTE HALTER ZAHNRAD SUPPORTO RUOTA DENTADA PORTACASSETTA SOPORTE RUEDA DENTADA PORTACASSETTE	35089200
24	BUTTON STRIP CD CONTROL/PRESET BARRETTE DE TOUCHES 8T CD/PRESET TASTENLEISTE CD CONTROL/PRESET PIATTINA TASTI 8T CD CONTROL/PRESET PLACA DE TECLAS 8T CD CONTROL/ PRESET	35214790
25	TIME/MIX BUTTON BARRETTE DE TOUCHES TIME/MIX TASTENLEISTE TIME/MIX PIATTINA TASTI TIME/MIX PLACA DE TECLAS TIME/MIX	35214800
26	BUTTON STRIP POWER/PROGRAM BARRETTE DE TOUCHES POWER/PROGRAM TASTENLEISTE POWER/PROGRAM PIATTINA TASTI POWER/PROGRAM PLACA DE TECLAS POWER/PROGRAM	35214810
27	SUPPORT BUTTONS CD/TAPE/TUNER SUPPORT DE TOUCHES CD/TAPE/TUNER HALTER KUNSTSTOFF CD/TAPE/TUNER SUPPORTO TASTI CD/TAPE/TUNER SOPORTE TECLAS CD/TAPE/TUNER	35111770
28	CD BUTTON TOUCHE CD TASTE CD TASTO CD TECLA CD	35214830
29	TAPE BUTTON TOUCHE TAPE TASTE TAPE TASTO TAPE TECLA TAPE	35214840
30	TUNER BUTTON TOUCHE TUNER TASTE TUNER TASTO TUNER TECLA TUNER	35214850
50	SWITCHED MODE POWER TRANSF. TRANSFORMATEUR D'ALIMENTATION TRAFO SCHALTNETZTEIL TRASFORMATORE DI ALIMENTAZIONE TRANSFORMADOR DE ALIMENTACION	35149040
53	REAR PANEL COFFRET ARRIERE RUECKWAND PANNELLO POSTERIORE TAPA POSTERIOR	35214890
65	COUNTER CENTRIRING PART CONTRE CENTREUR GEGENZENTRIERSTUECK CONTROCENTRATORE CONTRA ADAPTADOR	35145820
66	MAGNET CD AIMANT CD MAGNET CD MAGNETE CD IMAN CD	35051560
68	COUNTER CENTRIRING HOLDER SUPPORT CONTRE CENTREUR GEGENZENTRIERSTUECK HALTER SUPPORTO CONTROCENTRATORE SOPORTE CONTRA ADAPTADOR	35051520
70	CD LOCK MAGNET VERROU AIMANT CD RIEGEL MAGNET CD CHIUSURA MAGNETE CD CERROJO IMAN CD	35051550
71	CD DOOR VOLET CD CD KLAPPE SPORTELLINO CD TAPA CD	35214860

72	LOCK CD DOOR VERROU VOLET CD RIEGEL CD KLAPPE CHIUSURA SPORTELLINO CD CERROJO TAPA CD	35089250
73	CD EJECT SPRING RESSORT VOLET CD FEDER CD KLAPPE MOLLA SPORTELLINO CD RESSORTE TAPA CD	35176990
74	CD OPEN LEVER LEVIER OUVERTURE VOLET CD HEBEL (DOOR CD) LEVA APERTURA SPORTELLINO CD LEVA APERTURA TAPA CD	35154460
80	SPRING TORSION CD DOOR RESSORT A EPINGLE VOLET CD NADELFEDER CD KLAPPE MOLLA DI TORSIONE SPORTELLINO CD RESSORTE HORQUILLA TAPA CD	35089260
81	SUPPORT CD MECHANISM SUPPORT MECANIQUE CD HALTER CD LAUFWERK SUPPORTO MECCANICA CD SOPORTE MECANISMO CD	35214870
82	CD DOOR DAMPER GEAR ROUE DENTEE VOLET CD ZAHNRAD CD HALTER RUOTA DENTATA SPORTELLINO CD RUEDA DENTADA TAPA CD	35089280
83	GEAR WHEEL CD HOLDER SUPPORT ROUE DENTEE VOLET CD HALTER ZAHNRAD SUPPORTO RUOTA DENTADA SPORTELLINO CD SOPORTE RUEDA DENTADA TAPA CD	35089290



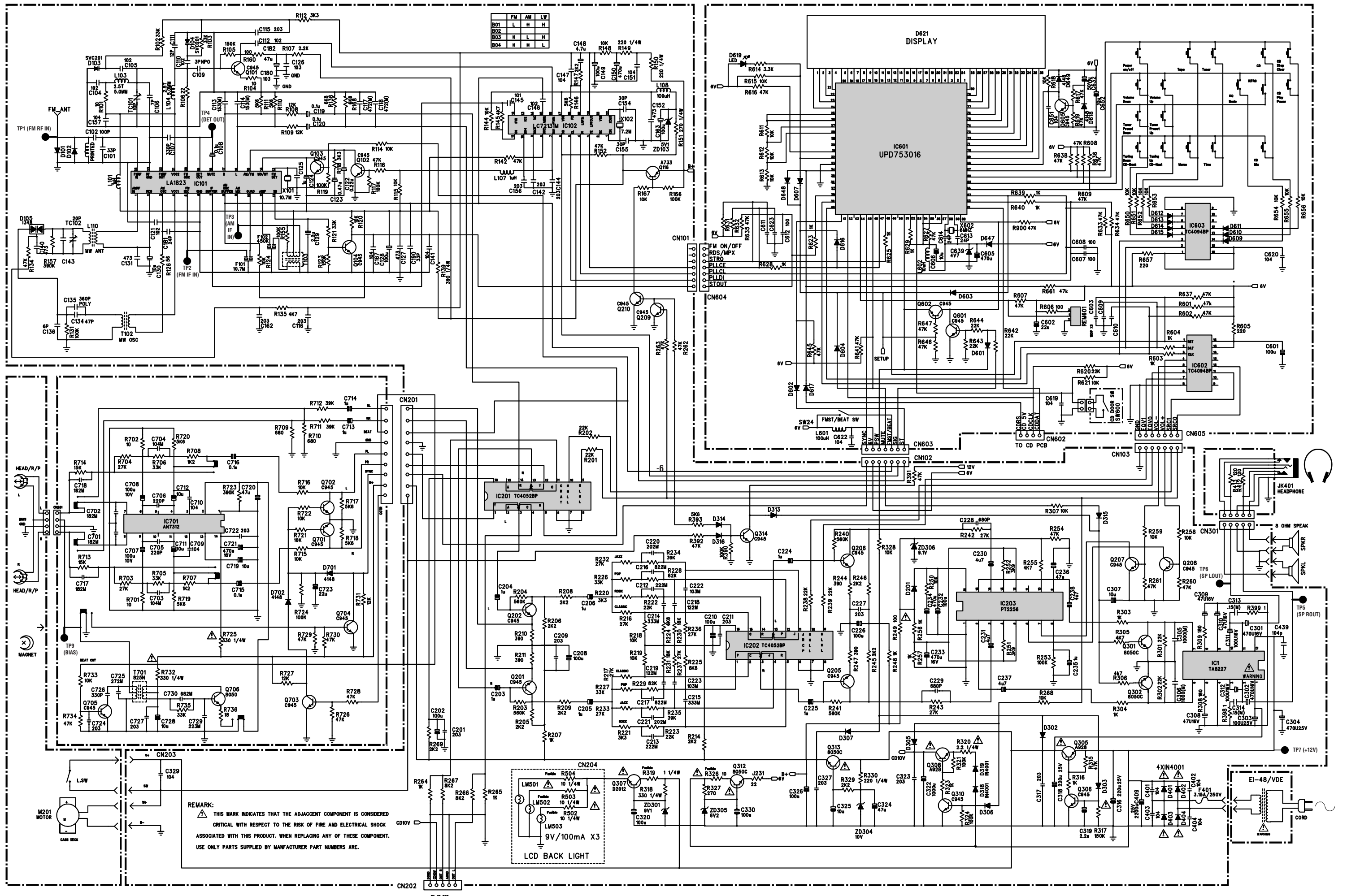
**CHASSIS AND PRESENTATION / CHASSIS ET PRESENTATION / CHASSIS UND GEHAEUSETEILE /
TELAIO E DI PRESENTAZIONE / CHASIS Y PRESENTACION**

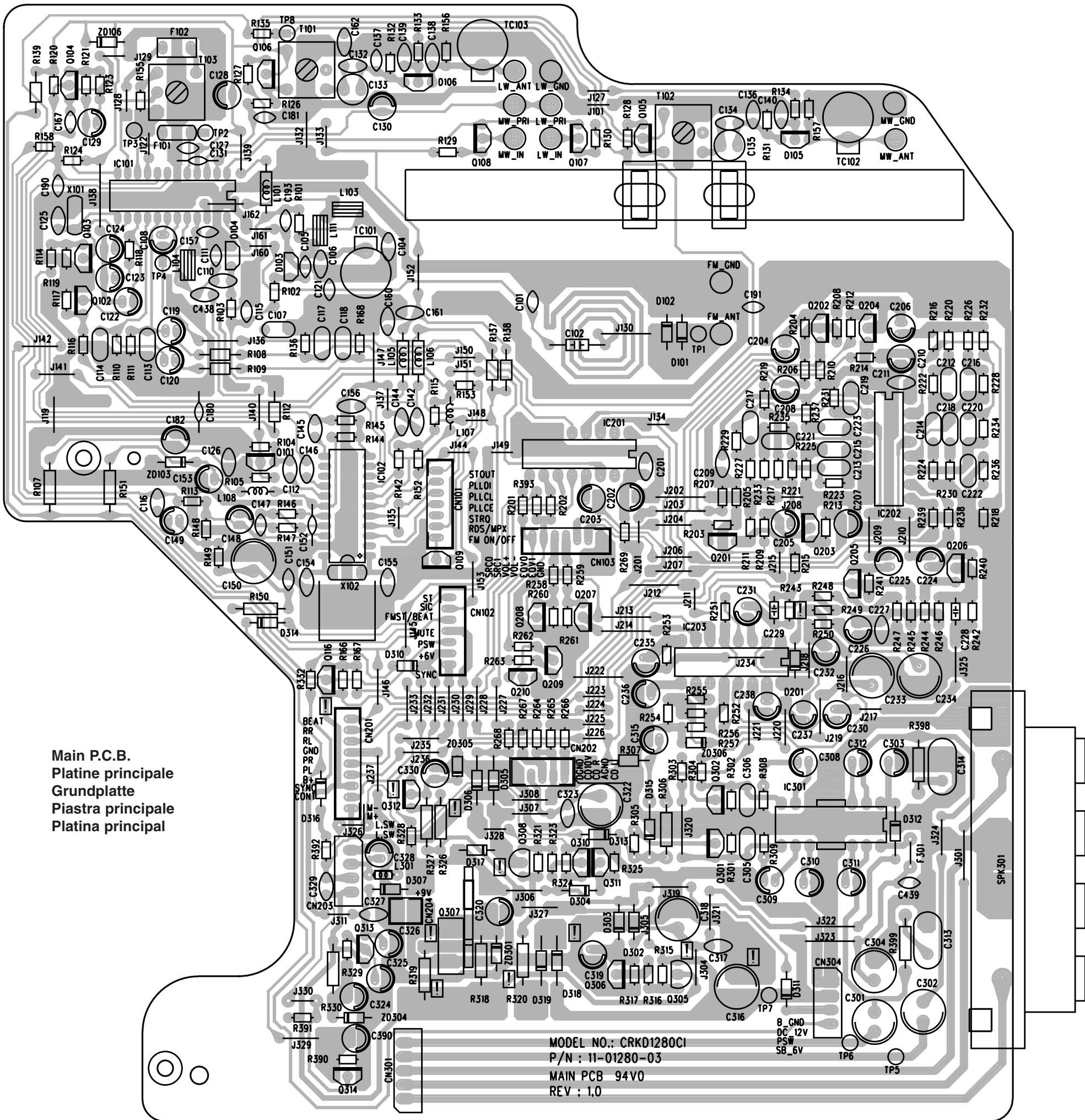
AM1080

4/4

The description and characteristics given here are of informative significance only, and non committal. To keep up the high quality of our products, we reserve the right to make any changes or improvement without previous notice. • Les descriptions et caractéristiques figurant sur ce document sont données à titre d'information et non d'engagement. En effet, soucieux de la qualité de nos produits, nous nous réservons le droit d'effectuer, sans préavis, toute modification ou amélioration. • Die Beschreibungen und Daten in dieser Anleitung dienen nur zur Information und sind nicht bindend. Um die Qualität unserer Produkte ständig zu verbessern, behalten wir uns das Recht auf Änderungen vor. • Le descrizioni e le caratteristiche date su questo documento sono fornite a semplice titolo informativo e senza impegno. Ci riserviamo il diritto di eseguire, senza preavviso, qualsiasi modifica o miglioramento. • Las descripciones y características que figuran en este documento se dan a título de información y no de compromiso. En efecto, en bien de la calidad de nuestros productos, nos reservamos el derecho de efectuar, sin previo aviso, cualquier modificación o mejora.

MAIN SCHEMATIC DIAGRAM - SCHEMA DE LA PLATINE PRINCIPALE - GRUNDPLATTE SCHALTBILD - SCHEMA DELLA PIASTRA PRINCIPALE- ESQUEMA DE LA PLATINA PRINCIPAL





Main P.C.B.
 Platine principale
 Grundplatte
 Piastra principale
 Platina principal

MODEL NO.: CRK01280CI
 P/N : 11-01280-03
 MAIN PCB 94V0
 REV : 1.0

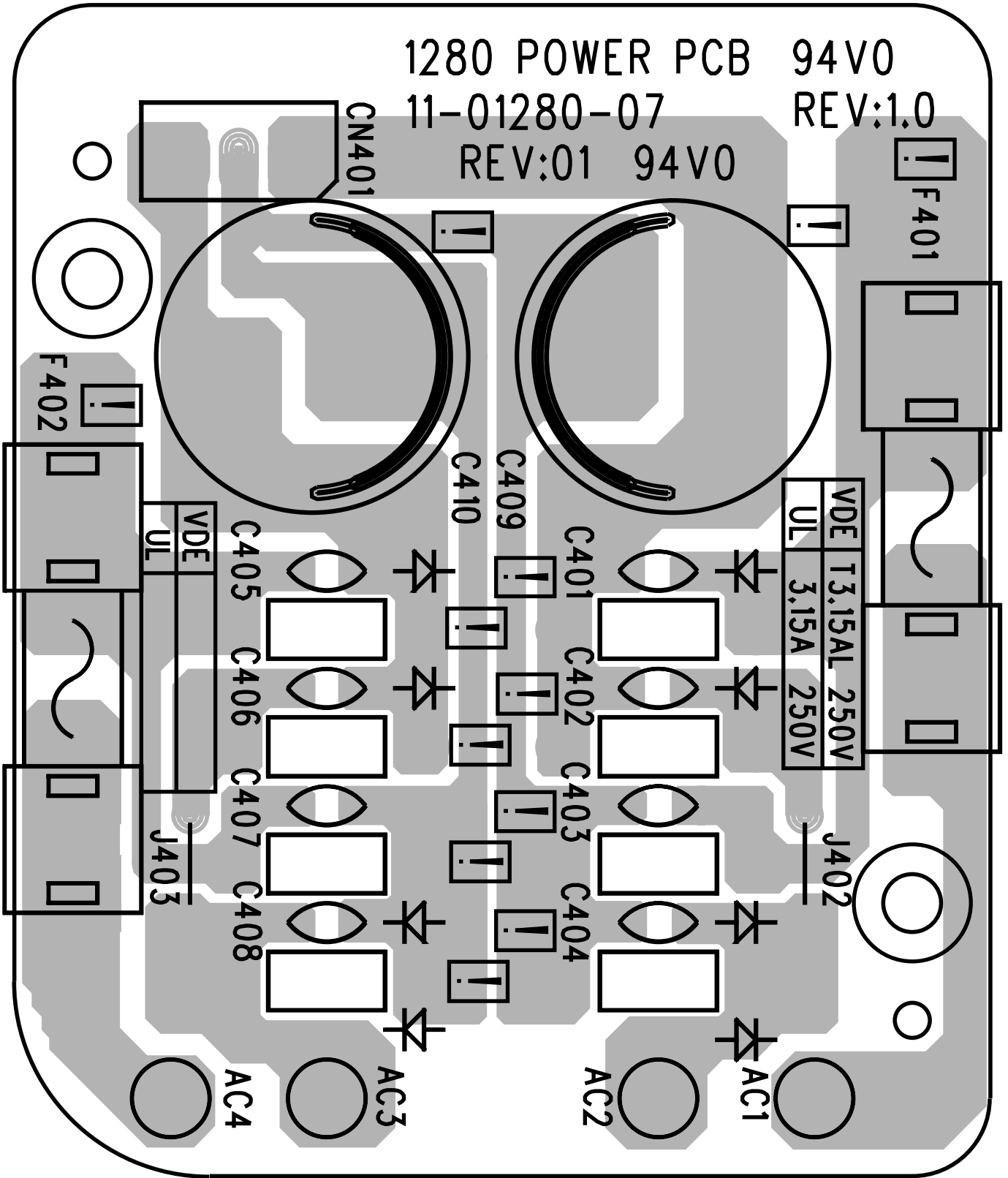
B_GND
 DC 12V
 PSW
 SB_6V

1280 POWER PCB 94V0

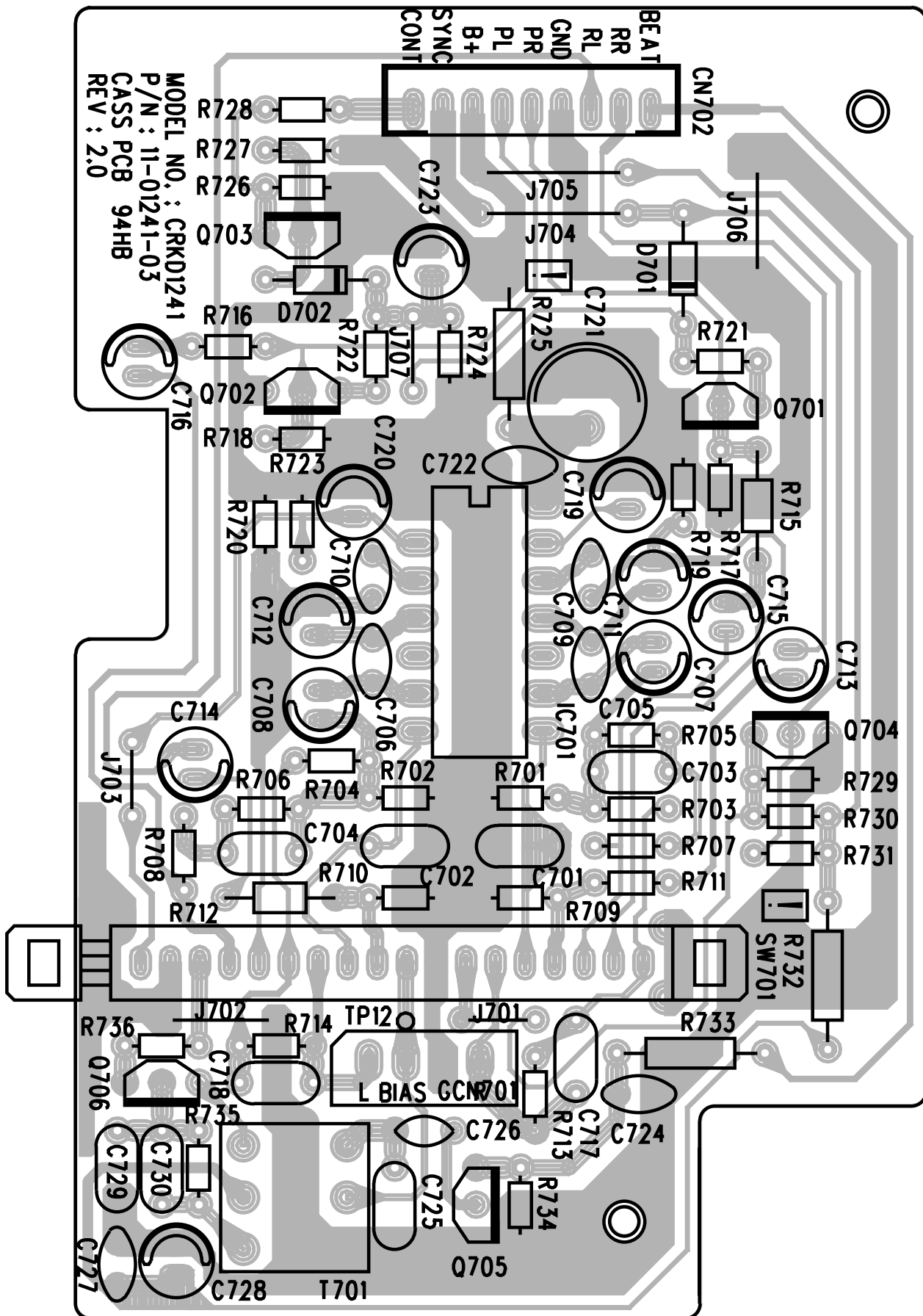
11-01280-07

REV:1.0

REV:01 94V0



Power supply P.C.B.
Platine alimentation
Ltpl. Netzteil
Piastra alimentazione
Platina alimentaci3n



MODEL NO. : CRKD1241
 P/N : 11-01241-03
 CASS PCB 94HB
 REV : 2.0

Playback / record P.C.B.
 Platine enregistrement / lecture
 Aufnahme / Wiedergabe Ltpl.
 Piastra registrazione / riproduzione
 Platina grabación / reproducción

Headphone-jack P.C.B.
Platine prise-casque
Kopfhörerbuchse Ltpl.
Piastra presa per cuffia
Platina toma auriculares

