

**PARTS LIST**  
**LISTE PIECES DETACHEES**  
**ERSATZTEILLISTE**  
**LISTA PARTI DI RICAMBIO**  
**LISTA DE PIEZAS DE REPUESTO**



**THOMSON**  
**AM2100**  
**Chassis CRKD1293**

#### MODULES

<b>MAIN</b>	<b>MAIN</b>	<b>R 35147750</b>
<b>AMPL</b>	<b>AMPLI</b>	<b>R 35150760</b>
<b>KB1</b>	<b>FUNCTION</b>	<b>35147730</b>
<b>KB2</b>	<b>CONTROL</b>	<b>35147700</b>
<b>KDB</b>	<b>DISPLAY/CONTROL</b>	<b>R 35147740</b>
<b>POWE</b>	<b>POWER</b>	<b>R 35150750</b>
<b>TRCD</b>	<b>TEM130-0W CD SERVO</b>	<b>35127120</b>



<b>IC102</b>	ST24C02SGS	35126010
<b>IC103</b>	780205GF	35126000
<b>IC401</b>	LC72131M	35125790
<b>IC402</b>	LA1837	20884080
<b>IC403</b>	BU1923F	35094820
<b>IC405</b>	BU4066B	35047720
<b>IC406</b>	LC75392	35125810
<b>IC407</b>	TDA2822M	15047430
<b>IC601</b>	LA4450	35150460
<b>IC602</b>	LA4629	35126710
<b>IC801,802</b>	TA7291S FLAT	20264760
<b>IC803</b>	PST529D	35112340
<b>IC804</b>	ICP-F15	△ 35030850
<b>X101</b>	RPM6938-V4	35090120



<b>Q101,102,104,</b> 105,405,432, 433,436,449, 801,807	2SC536NF	35125760
<b>Q103,201,202,</b> 203,204,400, 406,806,809	2SA608NG	35125740
<b>Q401</b>	2SC2999D	35125750
<b>Q402,403,404,</b> 439,440,603, 604,606	DTC343TS SMD	10228420
<b>Q434,435,437,</b> 438	DTC144TS	35125770
<b>Q448,802</b>	2SB1240Q	35025380
<b>Q601,602</b>	2SC945TP-P	35150450
<b>Q803,804</b>	2SD882Q	35125940
<b>Q805,808</b>	2SC1383R	10235690



<b>D1,101,102,</b> 103,104,105, 106,107,108, 109,110,113, 202,203,204, 205,400,401, 403,404,410, 411,412,413, 420,423,818, 819,830,831	1N4148	44009209
<b>D422</b>	BZX55B5V1/ZPD5V1 2%	44035702
<b>D424,823</b>	ZPD4,7/BZX55C4V7	20475400
<b>D801,806,807,</b> 808,809,810, 811,812,813, 814,815,816, 817,827,832, 833	1N4001	16008160
<b>D802,803,804,</b> 805	1N5402-F	35147770
<b>D820,821</b>	BZX55C13	70438310
<b>D822,825</b>	BZX55C6V2	20475410
<b>D824</b>	BZX55C27	60447870
<b>D826,829</b>	BZX55C5V6/ZPD5V6	11073650
<b>D828</b>	BZX55C6V8	50890650
<b>LED101X2</b>	L-934SRC1B LED	35125980
<b>LED201,202,</b> 203,204	L-1034HD	10494190
<b>Q445</b>	SVC348-S	35125780



<b>CF400,401,402</b>	10M7HZ	35125900
<b>CF404</b>		35043500
<b>X101</b>	4M194304HZ	35033920
<b>X501</b>	7M2MHZ	35094790
<b>X502</b>	4M332HZ	35094830



<b>IFT400</b>		35025550
<b>IFT401</b>		35125830
<b>IFT402</b>	114KOHZ	35125890
<b>IFT403,404</b>		35125840
<b>IFT405</b>		35125850
<b>IFT406</b>		35125860
<b>IFT407</b>		35125870
<b>IFT408</b>		35125880
<b>L801</b>		35127010



<b>R216</b>		35126020
-------------	--	----------



<b>R808</b>	100R0 OHM 5% 0,25W	△ 15009570
-------------	--------------------	------------



<b>TR802</b>	T05387A	△ 35150300
<b>X801</b>	T04839A	△ 35125910

**R : RECYCLED PART**  
**: PIECE RECYCLEE**  
**: AUSTAUSCHTEILE**  
**: RICAMBIO RICICLATO**  
**: MODULO REPROCESADO**

For any requests, please contact THOMSON multimedia after sales service area  
 Pour toutes précisions, contactez votre service apres vente local THOMSON multimedia  
 Für weitere Auskünfte, wenden Sie sich bitte an die THOMSON multimedia Kundendienst  
 Per precisazioni, contattare l'assistenza tecnica THOMSON multimedia  
 Para cualquier pregunta, por favor contactar con el responsable de zona del servicio postventa de THOMSON multimedia

**03 / 2001**      **35150510**  
**REV. N° 0 00 / 00**      **00000000**  
**1/4**

**OTHER PARTS  
AUTRES PIECES  
SONSTIGE TEILE  
ALTRE PARTI  
OTRAS PIEZAS**

<b>F801</b>	2AT 250V TIME-LAG FUSE $\Delta$ 48029300 2AT 250V FUSIBLE TEMPORISE 2AT 250V SICHERUNG 2AT 250V FUSIBILE TEMPORIZZATO 2AT 250V FUSIBLE TEMPORIZADO	
<b>F802,803</b>	2A5T 250V TIME-LAG FUSE $\Delta$ 10246750 2A5T 250V FUSIBLE TEMPORISE 2A5T 250V SICHERUNG 2A5T 250V FUSIBILE TEMPORIZZATO 2A5T 250V FUSIBLE TEMPORIZADO	
<b>F804,805,806</b>	1AT 250V TIME-LAG FUSE $\Delta$ 48070100 1AT 250V FUSIBLE TEMPORISE 1AT 250V SICHERUNG 1AT 250V FUSIBILE TEMPORIZZATO 1AT 250V FUSIBLE TEMPORIZADO	
<b>IC400</b>	IF HEAD 35125730 TETE FI Z-F PLATTE TUNER FI SINTONIZADOR FI	
<b>LCD</b>	DISPLAY LCD 35125930 AFFICHEUR LCD LCD-ANZEIGE VISUALIZZATORE LCD VISUALIZADOR LCD	
<b>PH201</b>	HEADPHONE SOCKET 35049160 PRISE CASQUE KOPFHÖRERBUCHSE PRESA JACK TOMA JACK	
<b>RLY801</b>	OJ-SH-105LM RELAY $\Delta$ 35111580 OJ-SH-105LM RELAIS OJ-SH-105LM RELAIS OJ-SH-105LM RELEE OJ-SH-105LM RELEE	
<b>SW101,102, 103,104,105, 201,202,203, 204,318,319, 320,321</b>	MICROSWITCH 35125920 MICRO CONTACTEUR MIKROSCHALTER MICROINTERRUTTORE MICROCONTACTOR	
<b>SW400</b>	ANTENNA SOCKET 35125970 PRISE ANTENNE ANTENNENBUCHSE PRESA ANTENNA TOMA DE ANTENA	
<b>SW401,402, 601</b>	CINCH SOCKET 35125950 PRISE CINCH CHINCH-BUCHSE PRESA CINCH TOMA CINCH	
<b>SW403</b>	OPTICAL SOCKET 35125960 PRISE OPTIQUE BUCHSE PICK-UP PRESA OTTICA TOMA OPTICO	
<b>SW602</b>	LOUDSPEAKER SOCKET 35033350 PRISE HAUT PARLEUR LAUTSPRECHERBUCHSE PRESA ALTOPARLANTE TOMA HEMBRA ALTAVOZ	

**EQUIPMENT/PRESENTATION  
EQUIPEMENT/PRESENTATION  
AUSSTATTUNG/GEHAEUSE  
PARTI VARIE  
EQUIPO/PRESENTACION**

MULTIMEDIA PACK CD ROM + CABLE 55114820 MULTIMEDIA PACK CD ROM + CABLE MULTIMEDIA PACK CD ROM + KABLE MULTIMEDIA PACK CD ROM + CAVO MULTIMEDIA PACK CD ROM + CABLE	
CINCH(2)/JACK CABLE 55049770 CORDON PRISES CINCH(2)/JACK CINCH(2)/JACK-KABEL CAVO PRESA CINCH(2)/JACK CABLE DE ENLACE CINCH(2)/JACK	
LOUDSPEAKER BOX ASSY RIGHT AND LEFT 35151150 ENCEINTE ACOUSTIQUE GAUCHE ET DROITE LAUTSPRECHERBOX RECHTS UND LINKS CASSA ACUSTICA DESTRO E SINISTRO CAJA ACUSTICA DERECHA Y IZQUIERDA	
LOUDSPEAKER BOX ASSY RIGHT OR LEFT 35151160 ENCEINTE ACOUSTIQUE GAUCHE OU DROITE LAUTSPRECHERBOX RECHTS ODER LINKS CASSA ACUSTICA SINISTRA O DESTRA CAJA ACUSTICA IZQUIERDA O DERECHA	
AM2100 REMOTE CONTROL 35150500 AM2100 TELECOMMANDE AM2100 FERNBEDIENUNG AM2100 TELECOMANDO AM2100 TELEMANDO	
FOLDING BOX 35150470 EMBALLAGE CARTON KARTON IMBALLAGGIO CARTONE EMBALAJE CARTON	
FITTING DOWNER 35147660 CALE INFERIEURE POLSTER UNTEN Distanziatore inferiore CALZO INFERIOR	
FITTING UPPER 35147650 CALE SUPERIEURE POLSTER OBEN Distanziatore superiore CALZO SUPERIOR	
FM ANTENNA 35147630 ANTENNE FM FM ANTENNE ANTENNA FM ANTENA FM	
AM ANTENNA 35147620 AM ANTENNE ANTENNE AM ANTENNA AM ANTENA AM	
POWER SUPPLY LEAD $\Delta$ 10260820 CORDON D'ALIMENTATION NETZKABEL CAVO DI ALIMENTAZIONE CABLE DE ALIMENTACION	

**MECHANISM  
MECANIQUE  
MECHANIK  
MECCANICA  
MECANISMO**

CD 3 DISC CHASSIS ASSY 35127030 CHASSIS CD 3 DISQUES EQUIPE CD-WECHSLER K.P.L CHASSIS CD 3 DISCOS COMPLETO CHASIS CD 3 DISCOS EQUIPADO	
TCP11SL3W OPTICAL PLAYER 10681930 TCP11SL3W LECTEUR OPTIQUE TCP11SL3W CD-LAUFWERK TCP11SL3W ASSIEME OTTICA TCP11SL3W MECANISMO OPTICO	

**ACCESSORIES  
ACCESSOIRES  
ZUBEHOER  
ACCESSORI  
ACCESORIOS**

AAA 1.5V BATTERY (X2) 50853970 AAA 1.5V PILE (X2) AAA 1.5V BATTERIE (X2) AAA 1.5V PILA (X2) AAA 1.5V PILA (X2)	
LC20 CD DVD CD-ROM LENS CLEANER 35128640 LC20 NETTOYEUR DE LENTILLE CD DVD CD-ROM LC20 LINSREINIGER FÜR CD DVD CD-ROM LC20 PULITORE PER LENTI DI CD DVD CD-ROM LC20 LIMPIADOR DE LENTE CD DVD CD-ROM	

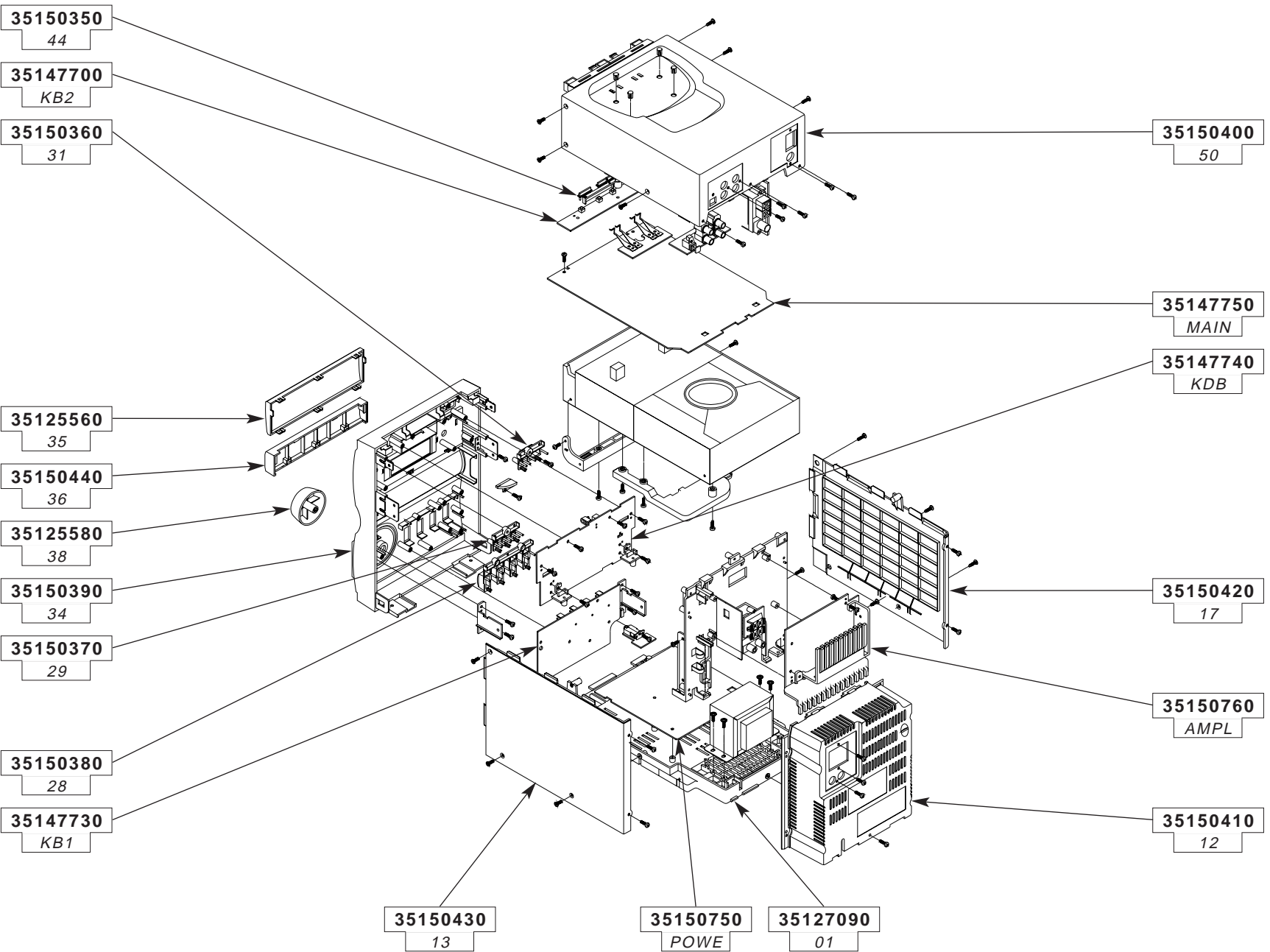


AM2100 UM TH 55133530 AM2100 NU TH AM2100 BA TH AM2100 IU TH AM2100 IU TH	
CRKD1293 SERVICE MANUAL 35150520 CRKD1293 DOCUMENTATION TECHNIQUE CRKD1293 TECHNISCHE DOKUMENTATION CRKD1293 DOCUMENTAZIONE TECNICA CRKD1293 DOCUMENTACION TECNICA	
AM2100 PARTS LIST 35150510 AM2100 LISTE DE PIECES DETACHEES AM2100 ERSATZTEILLISTE AM2100 LISTA PARTI DI RICAMBIO AM2100 LISTA DE PIEZAS DE REPUESTO	

**CHASSIS AND PRESENTATION  
CHASSIS ET PRESENTATION  
CHASSIS UND GEHAEUSETEILE  
CHASIS Y PRESENTACION  
TELAIO E DI PRESENTAZIONE**

<b>AMPL</b>	AMPLI BOARD AMPLI PLATINE AMPLI PLATTE AMPLI PIASTRA AMPLI PLATINA	35150760
<b>KB1</b>	FUNCTION BOARD FUNCTION PLATINE FUNCTION PLATTE FUNCTION PIASTRA FUNCTION PLATINA	35147730
<b>KB2</b>	CONTROL BOARD CONTROL PLATINE CONTROL PLATTE CONTROL PIASTRA CONTROL PLATINA	35147700
<b>KDB</b>	DISPLAY/CONTROL BOARD DISPLAY/CONTROL PLATINE DISPLAY/CONTROL PLATTE DISPLAY/CONTROL PIASTRA DISPLAY/CONTROL PLATINA	35147740
<b>MAIN</b>	MAIN BOARD MAIN PLATINE MAIN PLATTE MAIN PIASTRA MAIN PLATINA	35147750
<b>POWE</b>	POWER BOARD POWER PLATINE POWER PLATTE POWER PIASTRA POWER PLATINA	35150750
01	LOWER CASE ASSY COFFRET INFERIEUR GEHAEUSE UNTEN CASSA INFERIORE CAJA INFERIOR	35127090
12	REAR PANEL COFFRET ARRIERE RUECKWAND PANNELLO POSTERIORE TAPA POSTERIOR	35150410
13	SIDE PANEL RIGHT PANNEAU LATERAL DROIT SEITENTEIL RECHTS PANNELLO LATERALE DESTRO PANEL LATERAL DERECHO	35150430
17	SIDE PANEL LEFT PANNEAU LATERAL GAUCHE SEITENTEIL LINKS PANNELLO LATERALE SINISTRO PANEL LATERAL IZQUIERDO	35150420
28	BUTTON STRIP FUNCTIONS BARRETTE DE TOUCHES 4T FONCTIONS TASTENLEISTE FUNKTIONEN ASSIEME TASTI 4T FUNZIONI CONJUNTO DE TECLAS 4T FUNCIONES	35150380
29	BUTTON STRIP DISC CD BARRETTE DE TOUCHES 3T SELECTION DISQUE TASTENLEISTE AUSWAHL LASERPLATTE PIATTINA TASTI 3T SELEZIONE DEL DISCOS PLACA DE TECLAS 3T SELECCION DE DISCOS	35150370

31	BUTTON STRIP ON/OFF/DEMO BARRETTE DE TOUCHE 2T DEMO/ MARCHE/ARRET TASTENLEISTE EIN-AUS/DEMO PIATTINA TASTI 2T ACCESO/ SPENTO/DEMO PLACA DE TECLAS 2T MARCHA/ PARADA/DEMO	35150360
34	FRONT PANEL FACADE FRONTPLATTE PANNELLO FRONTALE PANEL FRONTAL	35150390
35	DISPLAY WINDOW GLACE AFFICHEUR ANZEIGEFENSTER VETRO DEL VISUALIZZATORE CRISTAL DEL VISUALIZADOR	35125560
36	CD DOOR VOLET CD CD Klappe SPORTELLLO CD TAPA CD	35150440
38	VOLUME KNOB BOUTON VOLUME LAUTSTAERKEKNOPF ROTELLA DI PLASTICA VOLUME RUEDA PLASTICA MANDO VOLUMEN	35125580
44	CD CONTROL KNOB BARRETTE DE TOUCHES CONTROL CD TASTENLEISTE CD CONTROL PIATTINA TASTI CONTROL CD PLACA DE TECLAS CONTROL CD	35150350
50	UPPER CASE ASSY COFFRET SUPERIEUR GEHAEUSE OBEN CASSA SUPERIORE CAJA SUPERIOR	35150400



**CHASSIS AND PRESENTATION / CHASSIS ET PRESENTATION / CHASSIS UND GEHAEUSETEILE /  
TELAIO E DI PRESENTAZIONE / CHASIS Y PRESENTACION**

AM2100

The description and characteristics given here are of informative significance only, and non committal. To keep up the high quality of our products, we reserve the right to make any changes or improvement without previous notice. • Les descriptions et caractéristiques figurant sur ce document sont données à titre d'information et non d'engagement. En effet, soucieux de la qualité de nos produits, nous nous réservons le droit d'effectuer, sans préavis, toute modification ou amélioration. • Die Beschreibungen und Daten in dieser Anleitung dienen nur zur Information und sind nicht bindend. Um die Qualität unserer Produkte ständig zu verbessern, behalten wir uns das Recht auf Änderungen vor. • Le descrizioni e le caratteristiche date su questo documento sono fornite a semplice titolo informativo e senza impegno. Ci riserviamo il diritto di eseguire, senza preavviso, qualsiasi modifica o miglioramento. • Las descripciones y características que figuran en este documento se dan a título de información y no de compromiso. En efecto, en bien de la calidad de nuestros productos, nos reservamos el derecho de efectuar, sin previo aviso, cualquier modificación o mejora.