



# THOMSON

AUDIO



## SERVICE MANUAL DOCUMENTATION TECHNIQUE TECHNISCHE DOKUMENTATION DOCUMENTAZIONE TECNICA DOCUMENTACION TECNICA

### CS 540

Version (PC\*): A

\*PC: The version code is indicated either in the battery compartment or on the back of the unit - ce code version est indiqué dans le compartiment à piles ou au dos de l'appareil - PC: Version des Geräts wird im Batteriefach oder auf der Rückseite angegeben - il codice della versione è indicato nello scompartimento delle batterie o sul retro dell'apparecchio - el código de la versión está indicado en el compartimento de las pilas o en la parte trasera del aparato.



### Technical data - Caractéristiques principales Technische Daten - Dati tecnici - Características del aparato

<b>Type of set:</b> <b>Type d'appareil:</b> <b>Geräteart:</b> <b>Tipo d'apparecchio:</b> <b>Tipo de aparato:</b>	Two-in-one horizontale combination/DAD Ensemble compact stéréophonique DAD-2er Horizontal Kompaktanlage Compatto Hifi/CD Equipo compacto estereofónico/DAD	
<b>Power supply:</b> <b>Alimentation:</b> <b>Stromversorgung:</b> <b>Alimentazione:</b> <b>Alimentación:</b>	230 V ~ 50Hz	<b>Nominal output power:</b> <b>Puissance nominale de sortie:</b> <b>Nennausgangsleistung:</b> <b>Potenza nominale di uscita:</b> <b>Potencia nominal de salida:</b>
 <b>FM - MF:</b> <b>MW - PO:</b> <b>LW - GO:</b>	87.5 - 108 MHz 522 - 1611 kHz 150 - 283 kHz	<b>Sensitivity:</b> <b>Sensibilité:</b> <b>Empfindlichkeit:</b> <b>Sensibilità:</b> <b>Sensibilidad:</b>
 <b>Frequency response:</b> <b>Courbe de réponse:</b> <b>Frequenzgang:</b> <b>Curva di risposta:</b> <b>Curva de respuesta:</b> <b>Wow and flutter:</b> <b>Fluctuations:</b> <b>Gleichlauf:</b> <b>Fluttuazioni:</b> <b>Fluctuaciones:</b>	125 Hz - 6.3 kHz (-5 dB) 0,3%	<b>Signal to noise ratio:</b> <b>Rapport signal / bruit:</b> <b>Geräuschspannungabstand:</b> <b>Rapporto segnale / disturbo:</b> <b>Relación señal / ruido:</b>
 <b>Disc rotation speed:</b> <b>Vitesse de rotation du disque:</b> <b>CD-Drehgeschwindigkeit:</b> <b>Velocità di rotazione del disco:</b> <b>Velocidad de rotación del disco:</b> <b>Stereo separation :</b> <b>Diaphonie :</b> <b>Übersprechdämpfung :</b> <b>Diafonia :</b> <b>Diafonía :</b>	200 ⇒ 500 tr/mn 40 dB	<b>Frequency response:</b> <b>Courbe de réponse:</b> <b>Frequenzgang:</b> <b>Curva di risposta:</b> <b>Curva de respuesta:</b> <b>Signal to noise ratio:</b> <b>Rapport signal / bruit:</b> <b>Geräuschspannungabstand:</b> <b>Rapporto segnale / disturbo:</b> <b>Relación señal / ruido:</b>
<b>DAD</b>	60 Hz - 16 kHz (-3 dB) 60 dB	



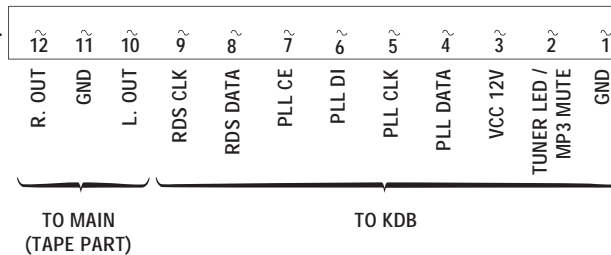
**WARNING :** Before servicing this chassis please read the safety recommendations.  
**ATTENTION :** Avant toute intervention sur ce châssis, lire les recommandations de sécurité.  
**ACHTUNG :** Vor jedem Eingriff auf diesem Chassis, die Sicherheitsvorschriften lesen.  
**ATTENZIONE :** Prima di intervenire sullo chassis, leggere le norme di sicurezza.  
**IMPORTANTE :** Antes de cualquier intervención, leer las recomendaciones de seguridad.

Code : 358 312 50 - 0305 / 3,7M - CRKD2144 Print.

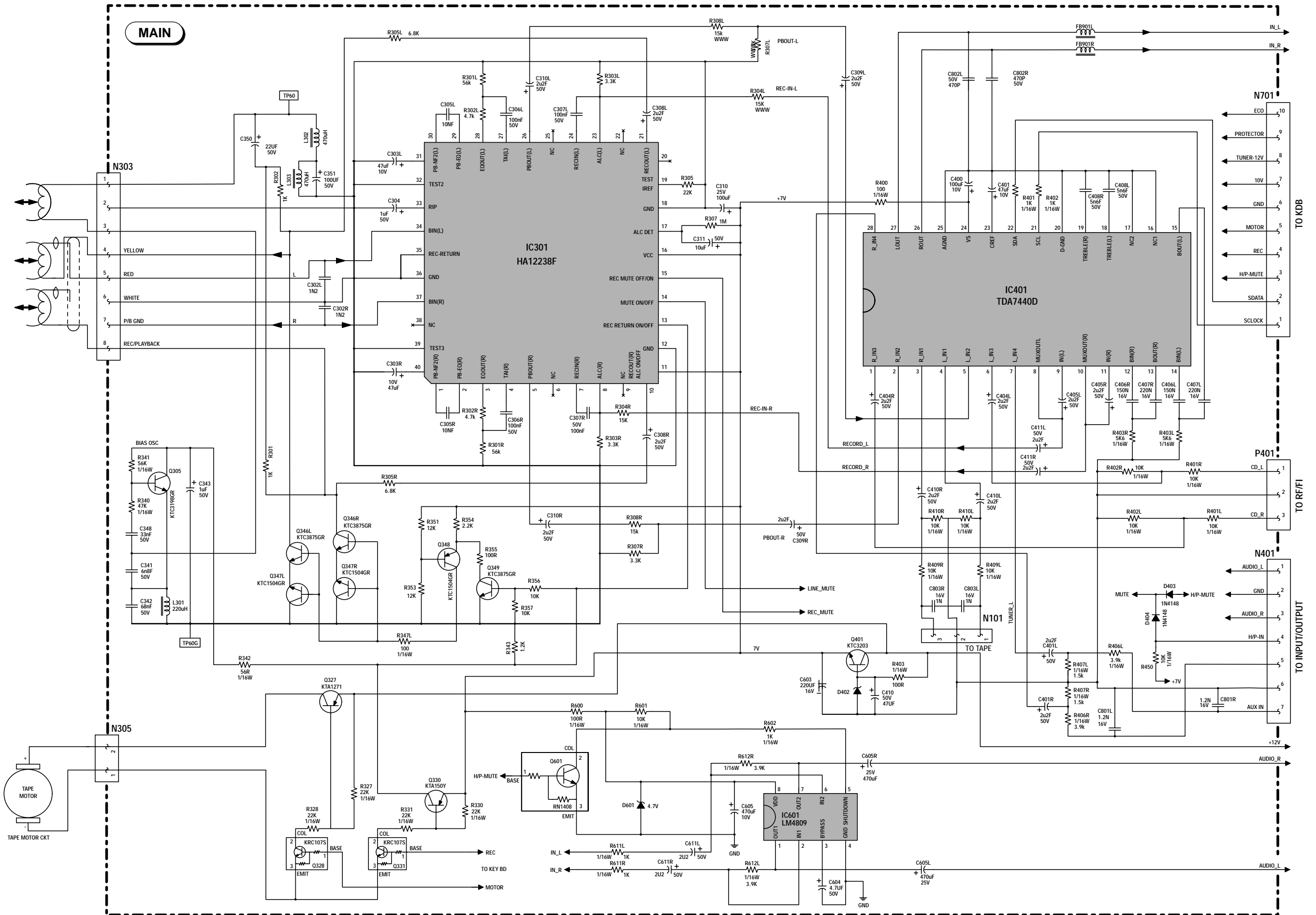
# RF / IF SCHEMATIC DIAGRAM - SCHEMA HF / FI - SCHALTBILD HF / ZF - SCHEMA HF / FI - ESQUEMA RF / FI

The complete RF / IF Module is available from A.S.S. under Part Number :  
En SAV, l'ensemble du module HF / FI est géré sous le code :  
Die Service Bestell-Nr. für das Modul "HF / ZF" ist :  
Il codice del modulo completo di HF / FI è :  
En postventa, el modulo completo RF / FI lleva el código :

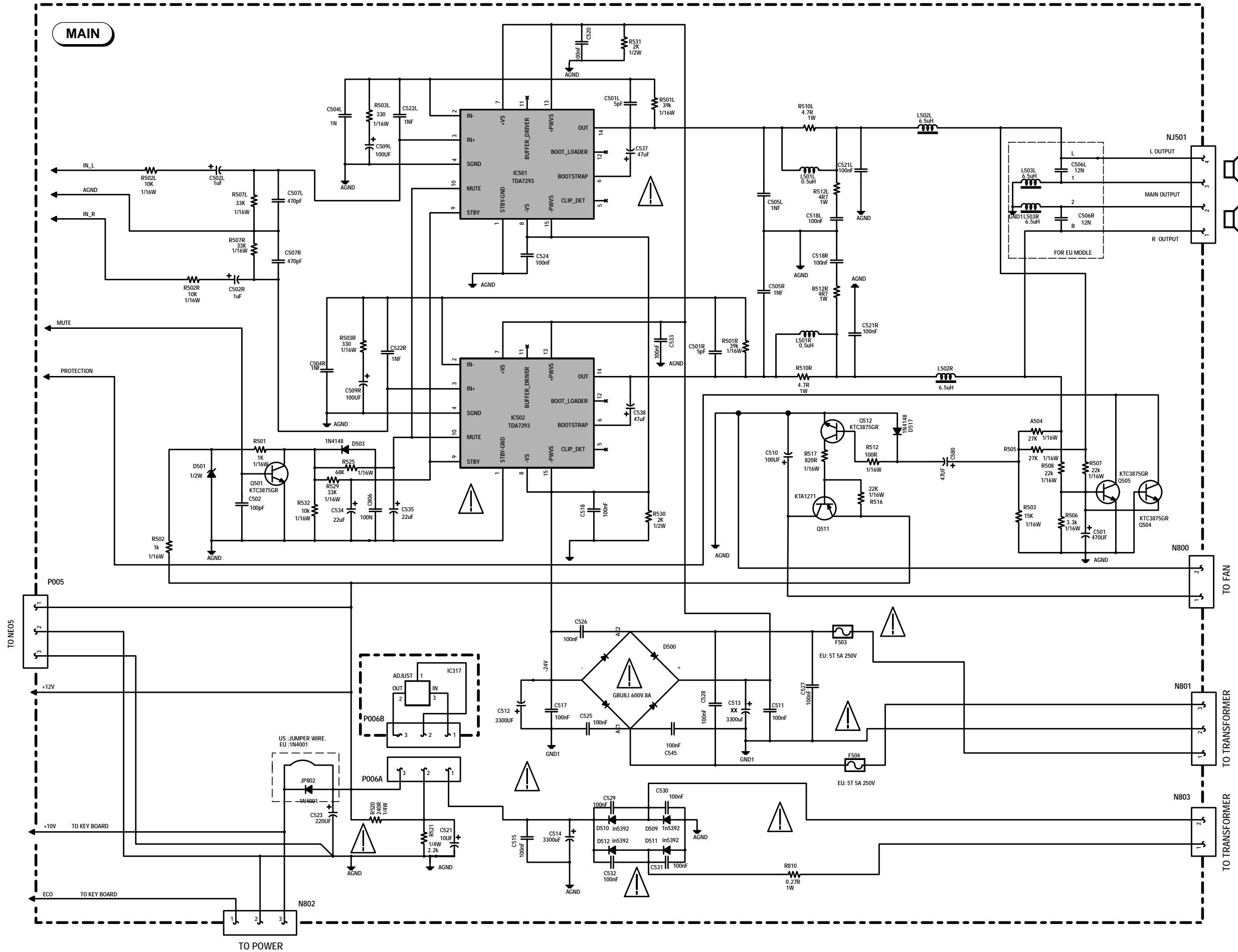
552 749 40

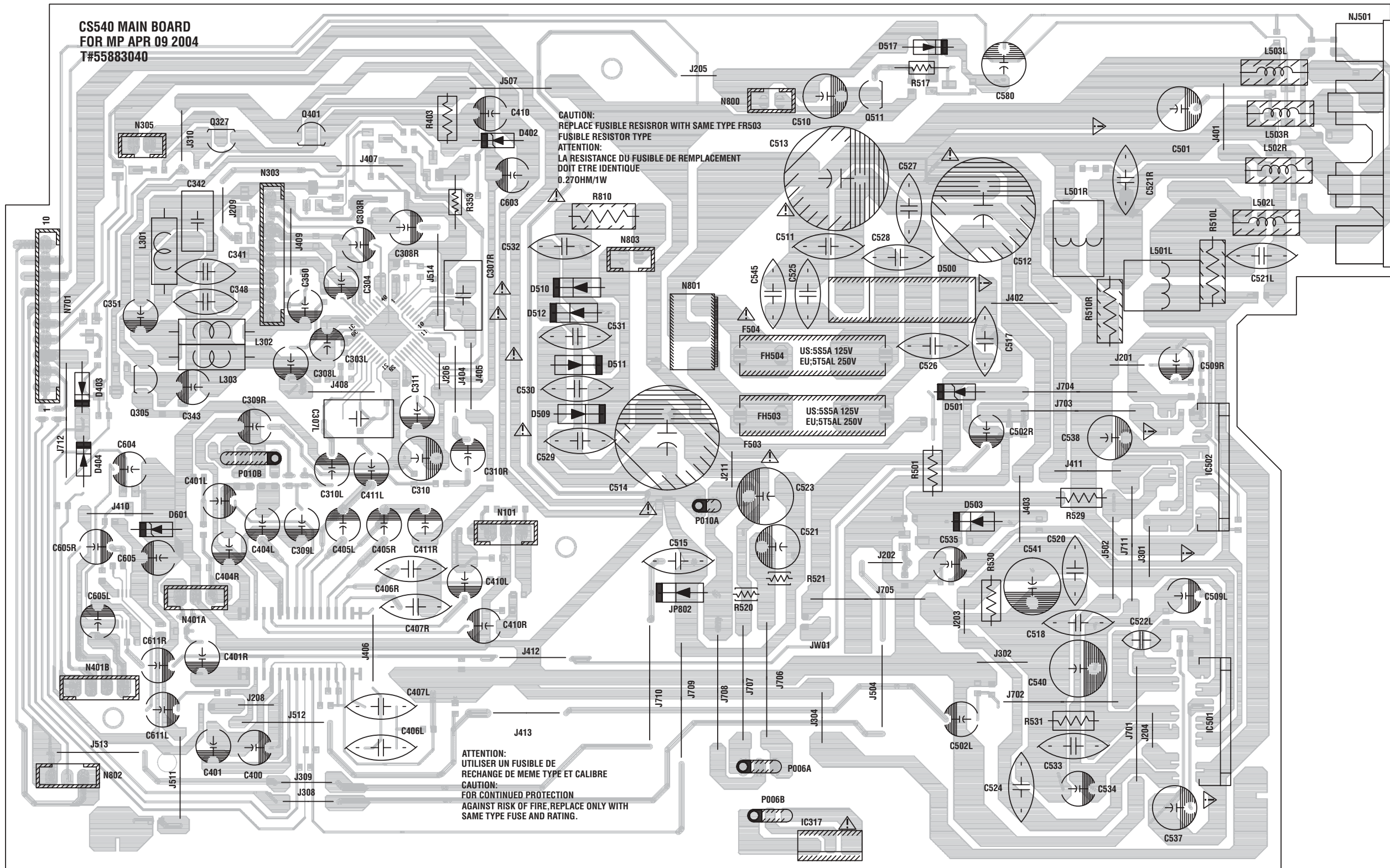


MAIN SCHEMATIC DIAGRAM - SCHEMA DE LA PLATINE PRINCIPALE - SCHALTBILD GRUNDPLATTE - SCHEMA DELLA PIASTRA PRINCIPALE - ESQUEMA DE LA PLATINA PRINCIPAL (TAPE PART)

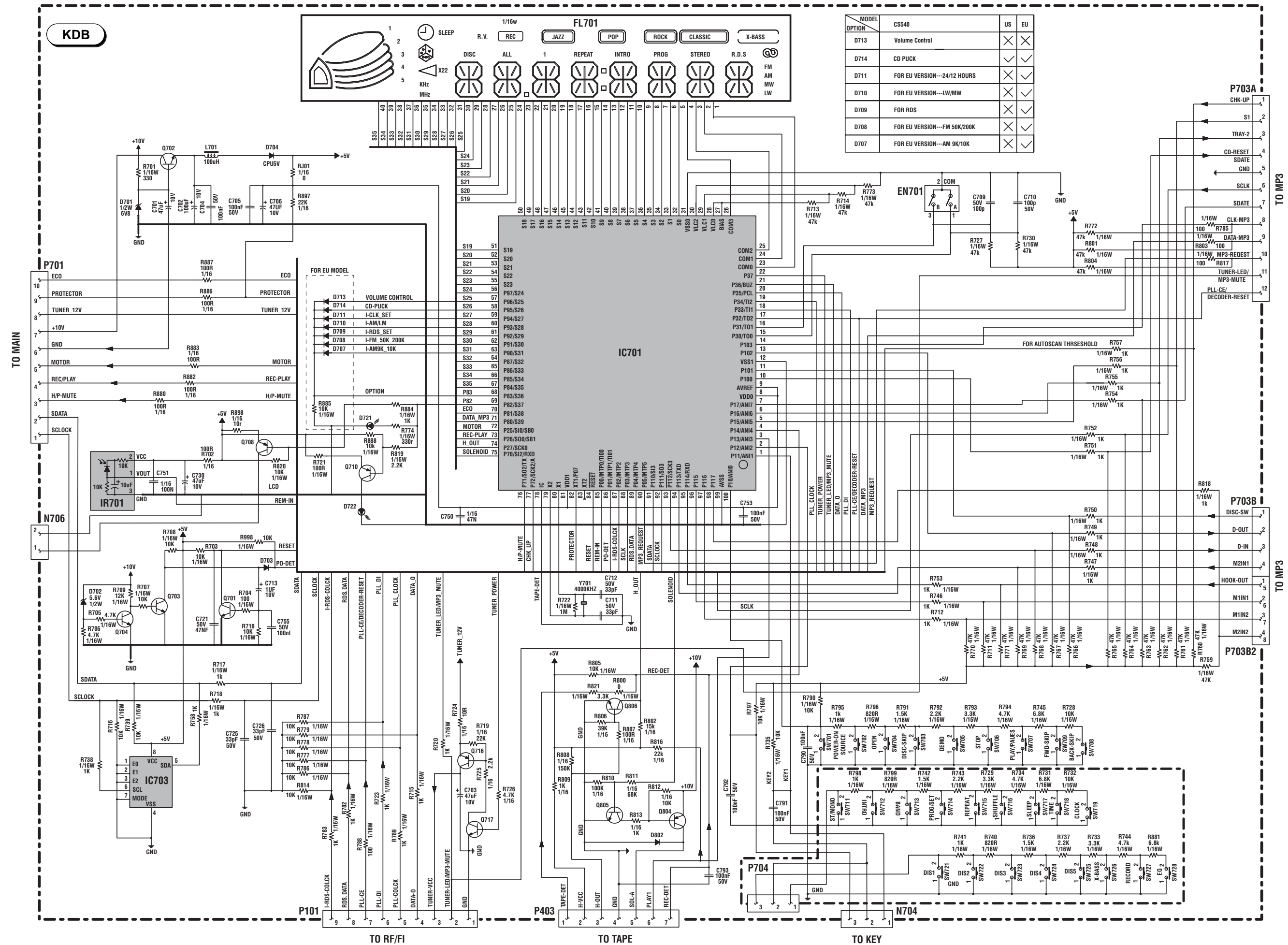


MAIN SCHEMATIC DIAGRAM - SCHEMA DE LA PLATINE PRINCIPALE - SCHALTBILD GRUNDPLATTE - SCHEMA DELLA PIASTRA PRINCIPALE - ESQUEMA DE LA PLATINA PRINCIPAL  
(POWER / AMP PART)



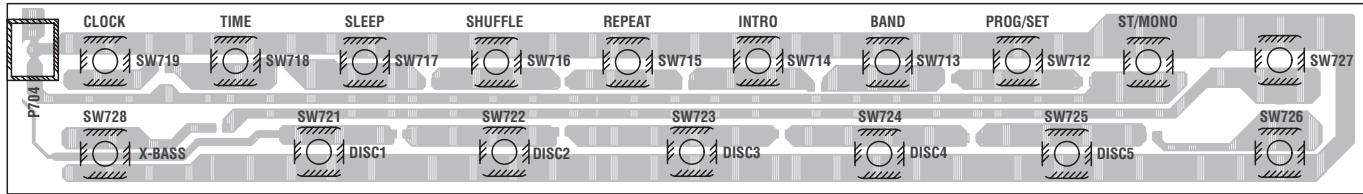


CONTROL / DISPLAY SCHEMATIC DIAGRAM - SCHEMA COMMANDES / AFFICHEUR - SCHALTBILD BEDIENTEIL / ANZEIGE - SCHEMA COMANDI / INDICATORE - ESQUEMA MANDOS / INDICADOR

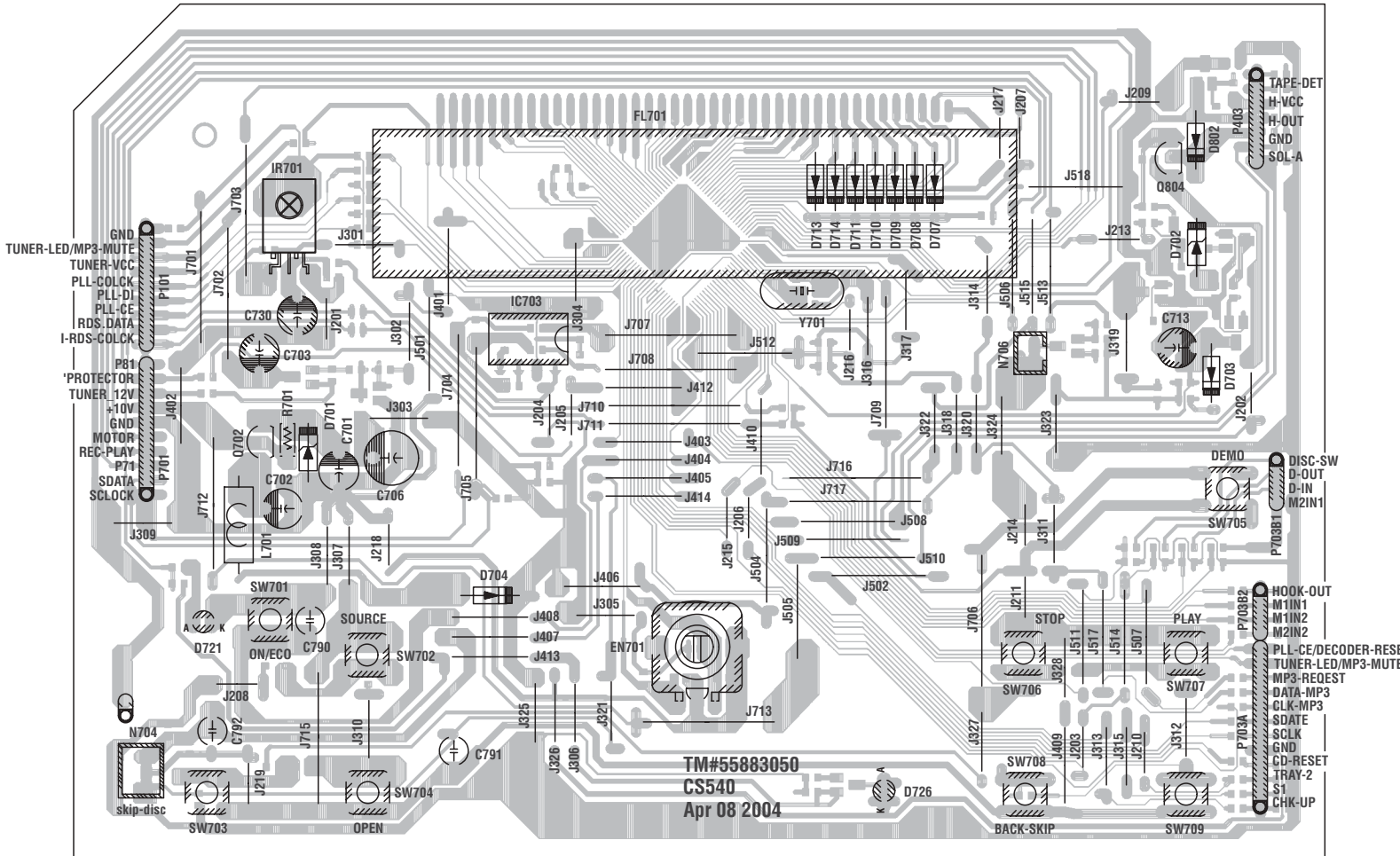


MODEL	OPTION	US	EU
D713	Volume Control	✓	✓
D714	CD PUCK	✓	✓
D711	FOR EU VERSION---24/12 HOURS	✓	✓
D710	FOR EU VERSION---LW/MW	✓	✓
D709	FOR RDS	✓	✓
D708	FOR EU VERSION---FM 50K/200K	✓	✓
D707	FOR EU VERSION---AM 9K/10K	✓	✓

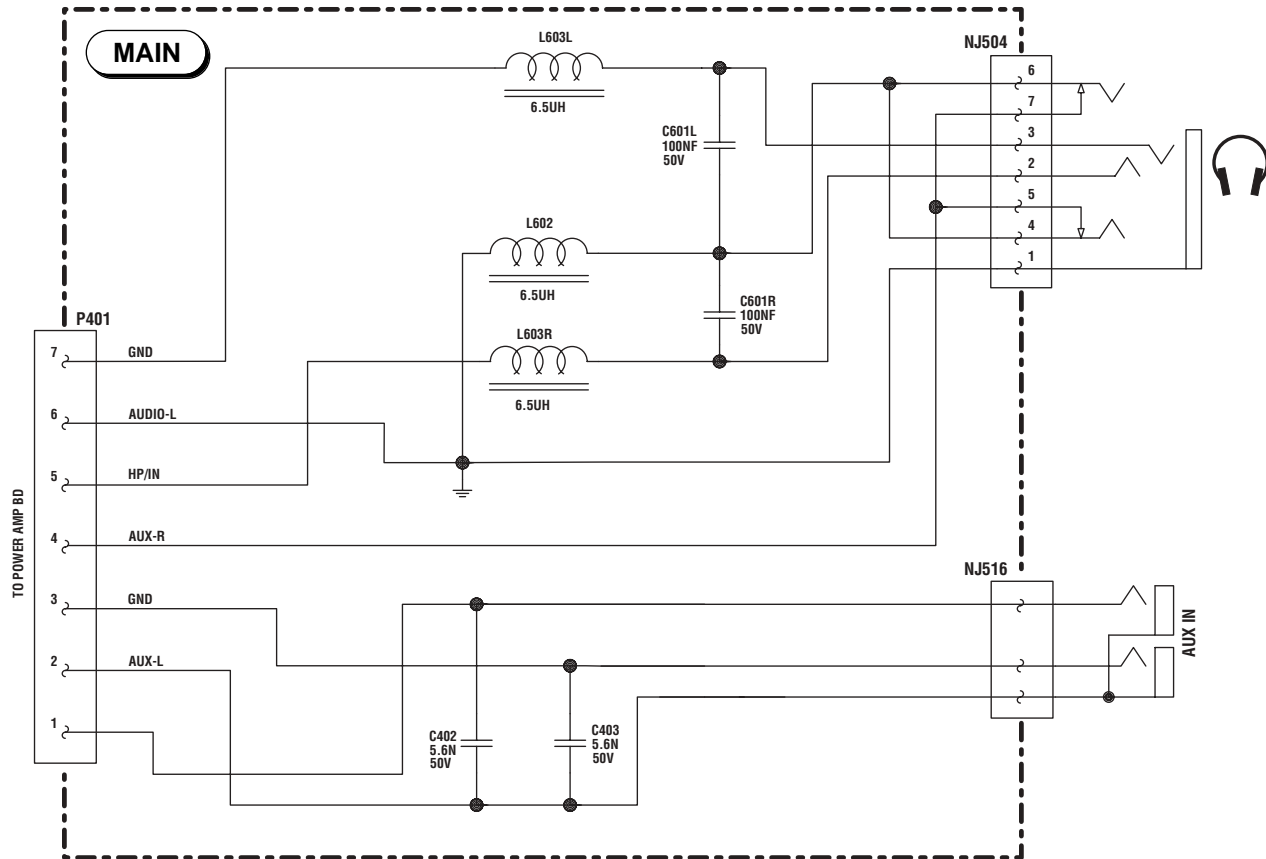
**Controls P.C.B.**  
**Platine commandes**  
**Ltpl. Bedienteil**  
**Piastra comandi**  
**Platina de mandos**



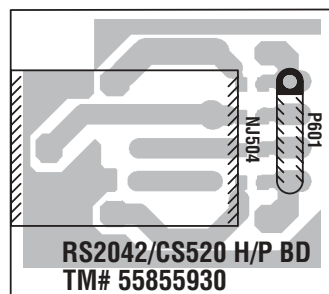
**Controls / display P.C.B.**  
**Platine commandes / afficheurs**  
**Ltpl. Bedienteil / Anzeige**  
**Piastra comandi / indicatori**  
**Platina de mandos / indicadores**



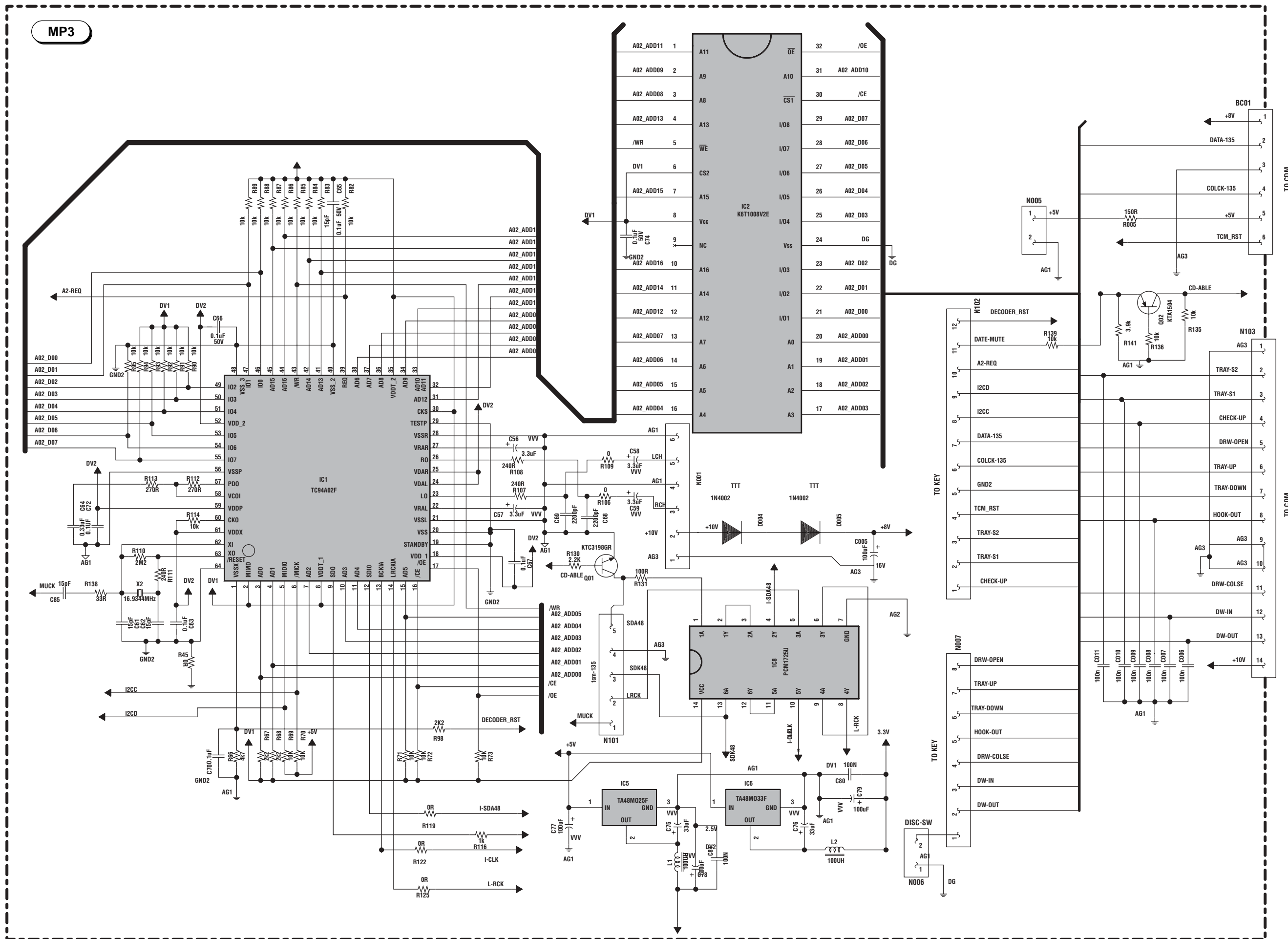
**MAIN SCHEMATIC DIAGRAM - SCHEMA DE LA PLATINE PRINCIPALE -  
 SCHALTBILD GRUNDPLATTE - SCHEMA DELLA PIASTRA PRINCIPALE -  
 ESQUEMA DE LA PLATINA PRINCIPAL (INPUT/OUTPUT PART)**



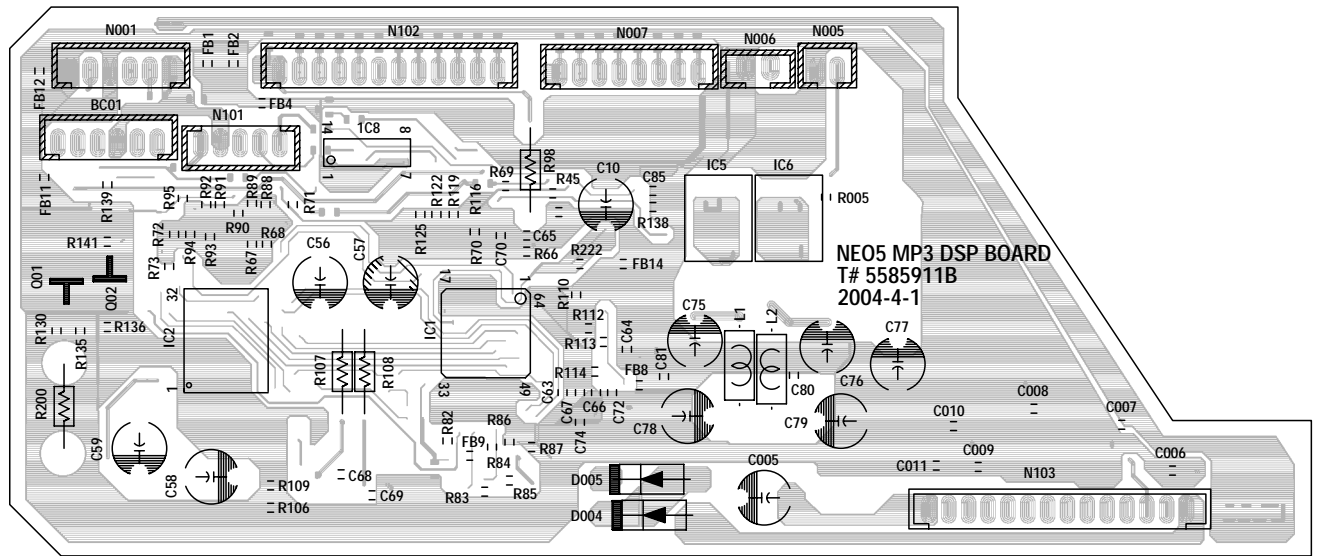
**Headphone-jack P.C.B.  
 Platine prise-casque  
 Ltpl. Kopfhörerbuchse  
 Piastra presa per cuffia  
 Platina toma auriculares**



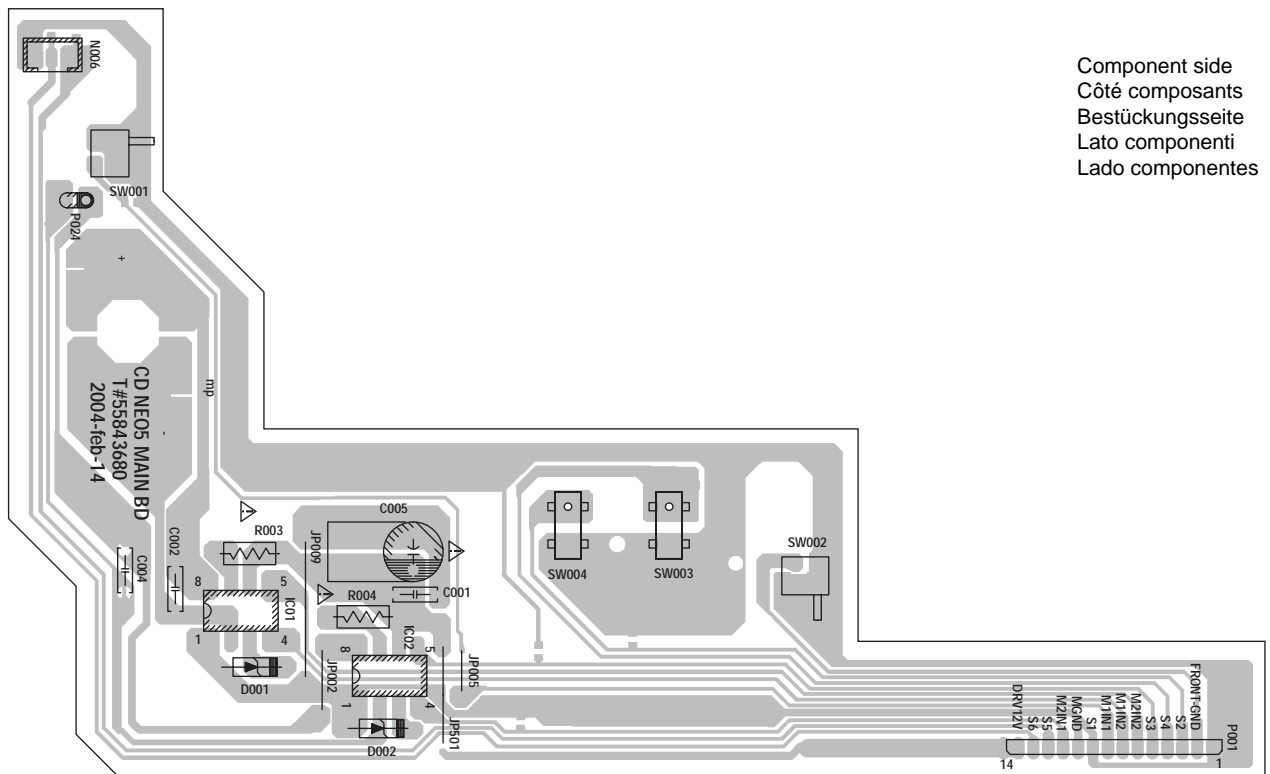




**Digital processing P.C.B.**  
**Platine traitement digital**  
**Ltpl. Digitalverarbeitung**  
**Piastra elaborazione digitale**  
**Platina tratamiento digital**

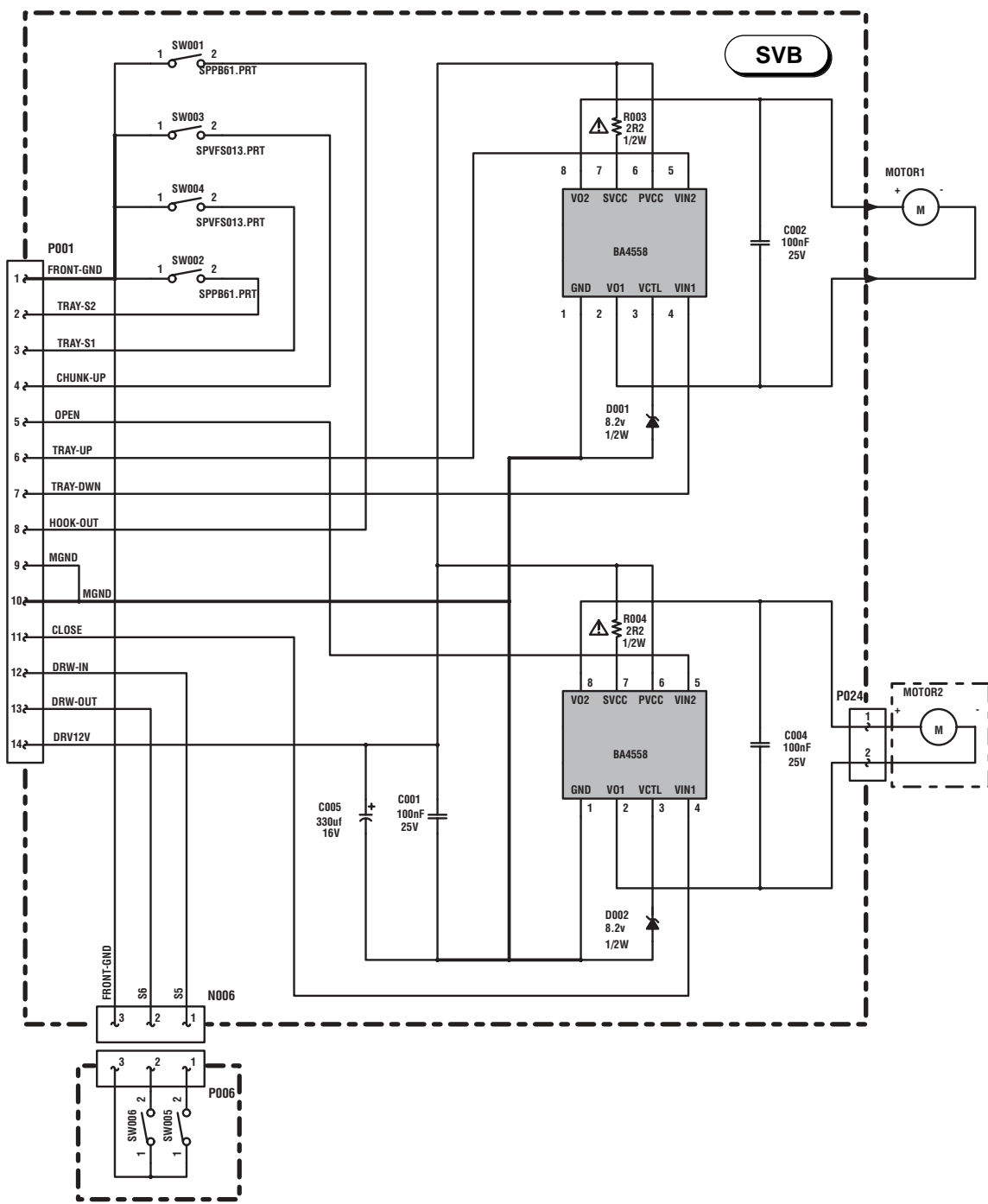


**CD motors control P.C.B.**  
**Platine moteurs commandes CD**  
**Ltpl. CD Wechsler-Moteur**  
**Piastra comandi motori CD**  
**Platina de mandos motores CD**

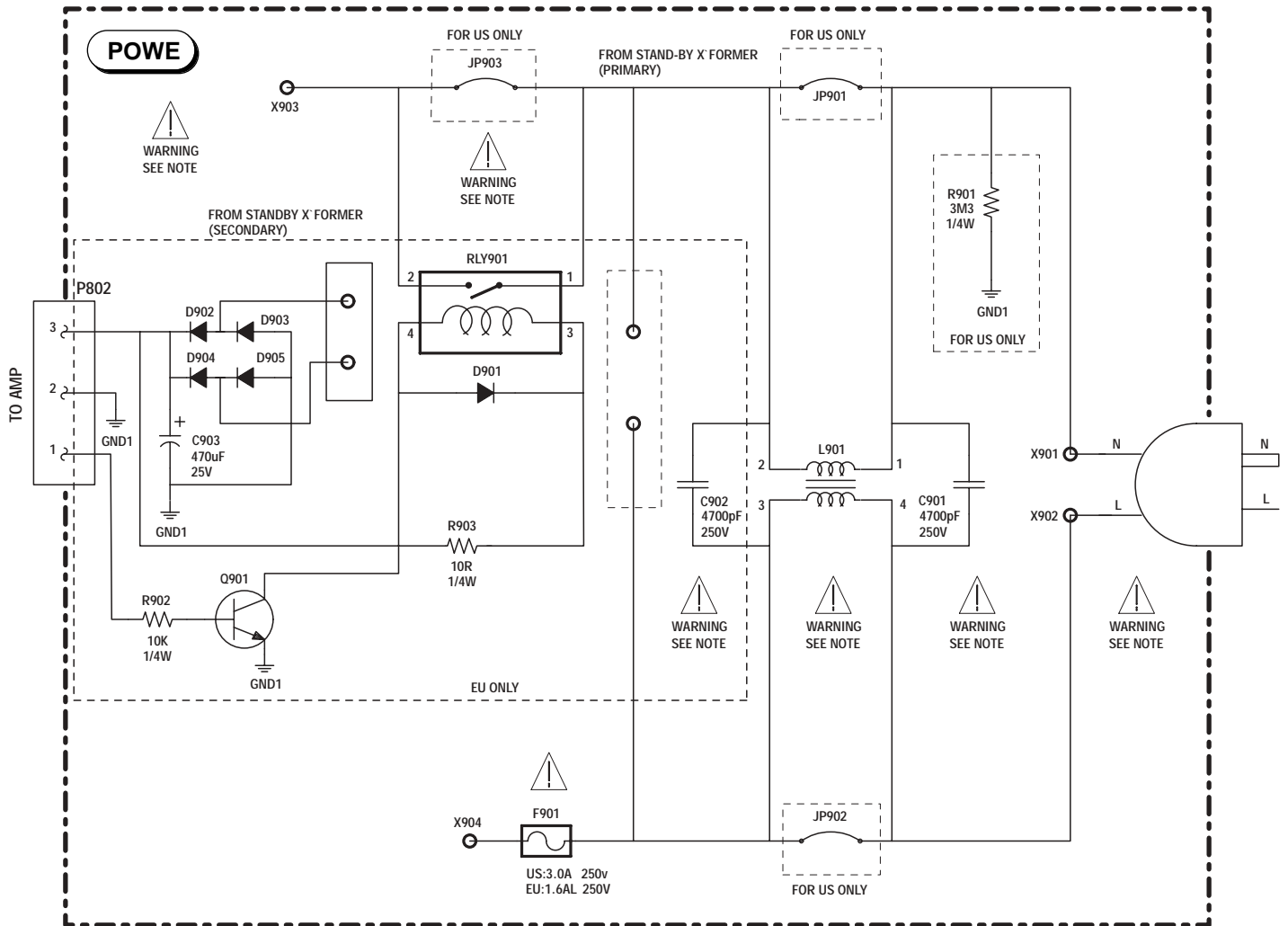


Component side  
 Côté composants  
 Bestückungsseite  
 Lato componenti  
 Lado componentes

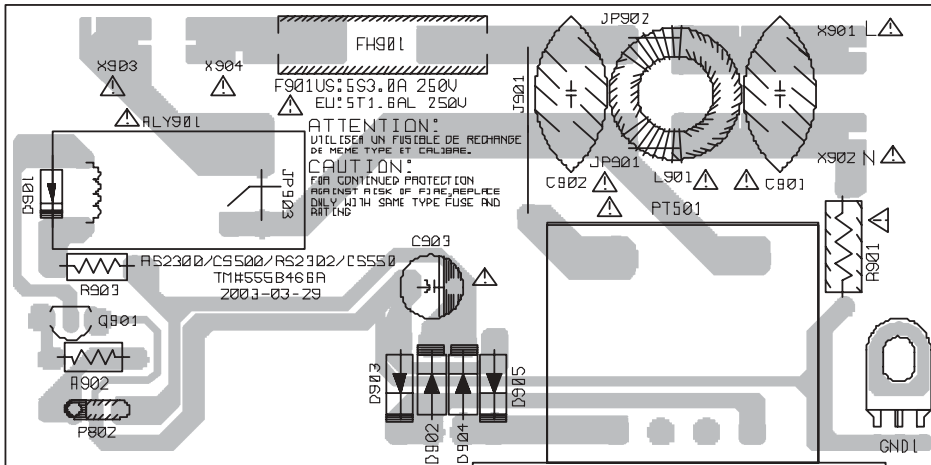
**CD CONTROL MOTORS SCHEMATIC DIAGRAM - SCHEMA COMMANDES MOTEURS  
 CD - SCHALTBILD CD WECHSLER-MOTOR - SCHEMA COMANDI MOTORI CD -  
 ESQUEMA MANDOS MOTORES CD**



**POWER SUPPLY SCHEMATIC DIAGRAM - SCHEMA DE L'ALIMENTATION - SCHALTBILD  
NETZTEIL - SCHEMA DELL'ALIMENTAZIONE - ESQUEMA DE LA ALIMENTACIÓN**



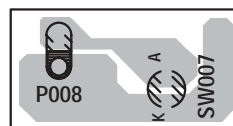
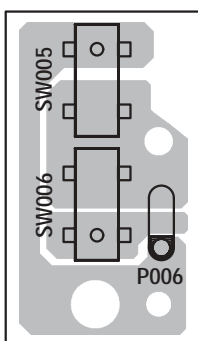
**Power unit P.C.B.**  
**Platine secteur**  
**Ltpl. Netzanschluss**  
**Piastra di rete**  
**Platina de red**



**Led P.C.B.**  
**Platine Led**  
**Ltpl. Led**  
**Piastra Led**  
**Platina Led**



**Key P.C.B.**  
**Platine touches**  
**Ltpl. Tasten**  
**Piastra tastiera**  
**Platina teclas**



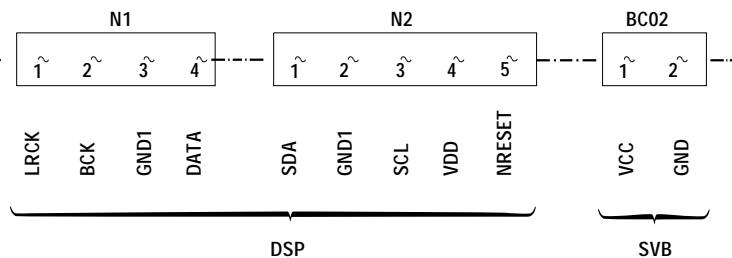
## Abbreviations - Abreviations - Abkürzungen - Abbreviazioni - Abreviaciones

<b>B_CUT</b>	Beatcut	<b>PWR_FAIL</b>	Power Failure
<b>CD_EN</b>	CD Enable	<b>PWR_SW</b>	Power Switch
<b>E. HD</b>	Erase Head	<b>R.SPK+</b>	Right Speaker positive
<b>GND</b>	Ground	<b>RCH</b>	Right Chanel
<b>L.SPK+</b>	Left Speaker positive	<b>RCH_O/P</b>	Right Chanel Output
<b>LCH</b>	Left Chanel	<b>REC_CTRL</b>	Record Control
<b>LCH_O/P</b>	Left Chanel Output	<b>REC_SW</b>	Record Switch
<b>LCH_RECIN</b>	Left Chanel Record In	<b>REC_SYNC</b>	Record Synchronisation
<b>LCH_RECIN</b>	Right Chanel Record In	<b>SPK-</b>	Speaker negative
<b>MOTOR_CTRL</b>	Motor Control	<b>SYN_REC</b>	Synchronisation in Record mode
<b>NC</b>	Not Connected	<b>TUNER_EN</b>	Tuner Enable

## DIGITAL PROCESSING SCHEMATIC DIAGRAM - SCHEMA DU TRAITEMENT DIGITAL - SCHALTBILD DIGITALVERARBEITUNG - SCHEMA ELABORAZIONE DIGITALE - ESQUEMA DEL TRATAMIENTO DIGITAL

The complete Digital Processing Module is available from A.S.S. under Part Number :  
 En SAV, l'ensemble du module traitement digital est géré sous le code :  
 Die Service Bestell-Nr. für das Modul "Digital Processing kompl." ist :  
 Il codice del modulo completo di elaborazione digitale è :  
 En postventa, el modulo completo tratamiento digital lleva el código :

107 931 90



This technical documentation is for use by maintenance technicians only  
Documentation technique exclusivement destinée aux professionnels de la maintenance  
Diese Angaben und Hinweise sind ausschließlich für den Service des Fachhändlers bestimmt  
Documentazione tecnica destinata esclusivamente ai tecnici dell'assistenza  
Documentación técnica destinada exclusivamente a los profesionales de mantenimiento



**Thomson multimedia  
Scandinavia AB**  
Florettegatan 29 C  
S-25467 Helsingborg (Sweden)  
Tel. : 042 25 75 00

**Thomson Sales UK Limited**  
Bath Road  
West Drayton  
Middlesex UB7 0DB (England)

**Thomson multimedia  
Sales Germany GmbH & Co oHG**  
Karl-Wiechert-Allee 74  
30625 Hannover

**Thomson  
Consumer Electronics Poland**  
ul.Gen.L. Okulickiego 7/9  
05-500 Piaseczno (Varsovie)  
Tel. : (22) 757 10 80

**Thomson multimedia  
Sales France**  
46, quai Alphonse Le Gallo  
92648 Boulogne cedex  
Tel. : 01 41 86 60 00  
Internet : [www.thomson-network.com](http://www.thomson-network.com)

**Thomson multimedia  
Czech s.r.o.**  
ul. Dopravaku - dum Genius 1  
Dolni Chabry  
CZ - 18400 Prague 8  
Tel. : (2) 688 67 70

**Thomson multimedia  
Switzerland**  
Seewenweg 5  
CH-4153 Reinach  
Tel. : (61) 716 96 60

**Thomson multimedia  
Hungary KFT**  
Lajos u. 78. II.em.  
H-1036 Budapest  
Tel. : 00 36 14 5334/80

**Thomson multimedia  
Sales Portugal**  
Avenida da Boavista, 3521  
4106 Porto  
Tel. : (2) 26 18 76 41

**Thomson multimedia  
Sales Spain**  
Avenida Isla Graciosa, 1  
Edificio Ancora  
Parque Empresarial La Marina  
28700 San Sebastián de los Reyes (Madrid)  
Tel. : (91) 384 14 19

**Thomson multimedia  
Sales Italy S.p.A.**  
Via Leonardo da Vinci,43  
20090 Trezzano sul naviglio (Milano)  
Tel. : (02) 48 414 111