

PARTS LIST
LISTE PIECES DETACHEES
ERSATZTEILLISTE
LISTA PARTI DI RICAMBIO
LISTA DE PIEZAS DE REPUESTO

THOMSON
CS86M
Chassis CRKD2157B

MODULES

MAIN	MAIN	36038900
KDB	DISPLAY/CONTROL	36038860
POWE	POWER	36038880
RCPB	CASSETTE	36038870



IC001	AN7312 R=Y	36038100
IC101	UPD780306GC-B28-8EU-A(CS86M) FLAT	36037580
IC102	HT24L02	35726450
IC103	PST600D	35726440
IC201	LA1823 R=Y	36038390
IC202	BU2616F FLAT	35586000
IC203	PT2314L R=Y	36038400
IC204	TDA7269 R=Y	36038380
IC501	BU1924F FLAT	55048400
IR101	SRM-354HF R=Y	36037590



Q001,014,106, 213,501,601	9015C R=Y	36037700
Q002,003,004, 005,006,007, 024,025,102, 103,104,105, 303,304	KTC3199GR R=Y	36037610
Q008,009,011, 012,013,016, 017,019,022, 023,026,027, 107,202,203, 204,205,206, 207,210,214, 216,218,219, 301,302,401, 402,602	9014C R=Y	36037690
Q010,018,211, 217	8050C R=Y	36038120
Q015	8550D R=Y	36038130
Q020,021	KTA1273Y/P R=Y	36038110
Q1	MMBT9014C SMD R=Y	36039880
Q201	9018G R=Y	36038410
Q209	9012G R=Y	36038580
Q212	KTD2058Y R=Y	36038530
Q215	KTA1046/P R=Y	36038520



D001,002,003, 007,008,102, 103,105,106, 107,108,122, 201,202,216, 218,219,501, 615,616,617	1N4148 R=Y	36028130
D004	6V8 5% R=Y	36038600
D005	5V1 5% R=Y	36038640
D1	1N4148 SMD R=Y	36039890
D203,204	SVC348-S	35125780
D205,206	1SV101 R=Y	36038660
D210	4V7 5% R=Y	36038650
D212	11V 5% R=Y	36038620
D213	9V1 5% R=Y	36038610
D220	6V2 2% R=Y	36038590
D221,601,602, 603,604,609, 610,611,612	1N4001 50V/1A R=Y	36038140
D223,ZD1	5V6 5% R=Y	36038040
D605,606,607, 608	1N5401 100V/3A R=Y	36038160
LED101	DL23ACH-A LED R=Y	36038050
LED104	LT-0311G-22 LED R=Y	36037780
LED103	DL23RTH LED R=Y	36038070
LED201,202	DL32ACH LED R=Y	36037790



CF201	10M7HZ R=Y	36039450
CF203	10M7HZ	35726370
X101	4M194304HZ R=Y	36037710
X201	7M200HZ R=Y	36038680
X501	4M332HZ R=Y	36038690



TC202		35711720
-------	--	----------



TC201,203	10POF	35210130
-----------	-------	----------



T601	STAND-BY	△ 36038180
T602	POWER	△ 36038170

Lead Free
 Sans Plomb
 R=Y ohne blei
 senza cavo
 sin plomo

For any requests, please contact THOMSON after sales europe area
 Pour toutes précisions, contactez votre service apres vente local THOMSON service europe
 Für weitere Auskünfte, wenden Sie sich bitte an die THOMSON sales europe Kundendienst
 Per precisazioni, contattare l'assistenza tecnica THOMSON sales europe
 Para cualquier pregunta, por favor contactar con el responsable de zona del servicio postventa de THOMSON sales europe

VERSION 1 12 / 2005 36038190
VERSION 2 00 / 0000

1/4

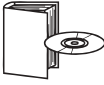
**OTHER PARTS
AUTRES PIECES
SONSTIGE TEILE
ALTRE PARTI
OTRAS PIEZAS**

F601	2AT 250V TIME-LAG FUSE Δ 48029300 2AT 250V FUSIBLE TEMPORISE 2AT 250V SICHERUNG 2AT 250V FUSIBILE TEMPORIZZATO 2AT 250V FUSIBLE TEMPORIZADO	
F602	3A15T 250V TIME-LAG Δ 36031420 FUSE R=Y 3A15T 250V FUSIBLE TEMPORISE R=Y 3A15T 250V SICHERUNG R=Y 3A15T 250V FUSIBILE TEMPORIZZATO R=Y 3A15T 250V FUSIBLE TEMPORIZADO R=Y	
JK201	LOUDSPEAKER SOCKET 35209520 PRISE HAUT PARLEUR LAUTSPRECHERBUCHSE PRESA ALTOPARLANTE TOMA HEMBRA ALTAVOZ	
JK202	HEADPHONE SOCKET 35057380 PRISE CASQUE KOPFHÖRERBUCHSE PRESA JACK TOMA JACK	
LCD1	DISPLAY LCD(SDT-A1083- TN-1) R=Y 36038080 AFFICHEUR LCD(SDT-A1083- TN-1) R=Y LCD-ANZEIGE(SDT-A1083- TN-1) R=Y VISUALIZZATORE LCD(SDT- A1083-TN-1) R=Y VISUALIZADOR LCD(SDT- A1083-TN-1) R=Y	
RL601	RELAY 5V Δ 35209450 RELAIS 5V RELAIS 5V RELEE 5V RELEE 5V	
S101,102,103, 104,105,106, 107,108,110, 119	MICROSWITCH R=Y 36038090 MICRO CONTACTEUR R=Y MIKROSCHALTER R=Y MICROINTERRUTTORE R=Y MICROCONTACTOR R=Y	

**EQUIPMENT/PRESENTATION
EQUIPEMENT/PRESENTATION
AUSSTATTUNG/GEHÄUSE
PARTI VARIE
EQUIPO/PRESENTACION**

CS86M REMOTE CONTROL 36038720 CS86M TELECOMMANDE CS86M FERNBEDIENUNG CS86M TELECOMANDO CS86M TELEMANDO	
LOUDSPEAKER BOX ASSY RIGHT OR LEFT 36039460 ENCEINTE ACOUSTIQUE GAUCHE OU DROITE LAUTSPRECHERBOX RECHTS ODER LINKS CASSA ACUSTICA DESTRO O SINISTRO CAJA ACUSTICA DERECHA O IZQUIERDA	
POWER SUPPLY LEAD Δ 36037980 CORDON D'ALIMENTATION NETZKABEL CAVO DI ALIMENTAZIONE CABLE DE ALIMENTACION	
FOLDING BOX(CS86M) 56191790 EMBALLAGE CARTON(CS86M) KARTON(CS86M) IMBALLAGGIO CARTONE(CS86M) EMBALAJE CARTON(CS86M)	
FITTING UPPER LEFT 35849000 CALE SUPERIEURE GAUCHE POLSTER OBEN LINKS Distanziatore superiore sinistra CALZO SUPERIOR IZQUIERDA	
FITTING UPPER RIGHT 35848990 CALE SUPERIEURE DROITE POLSTER OBEN RECHTS Distanziatore superiore destra CALZO SUPERIOR DERECHA	
FITTING DOWNER LEFT 35848980 CALE INFERIEURE GAUCHE POLSTER UNTEN LINKS Distanziatore inferiore sinistra CALZO INFERIOR IZQUIERDA	
FITTING DOWNER RIGHT 35848970 CALE INFERIEURE DROITE POLSTER UNTEN RECHTS Distanziatore inferiore destra CALZO INFERIOR DERECHA	
FM ANTENNA 35711760 ANTENNE FM FM ANTENNE ANTENNA FM ANTENA FM	

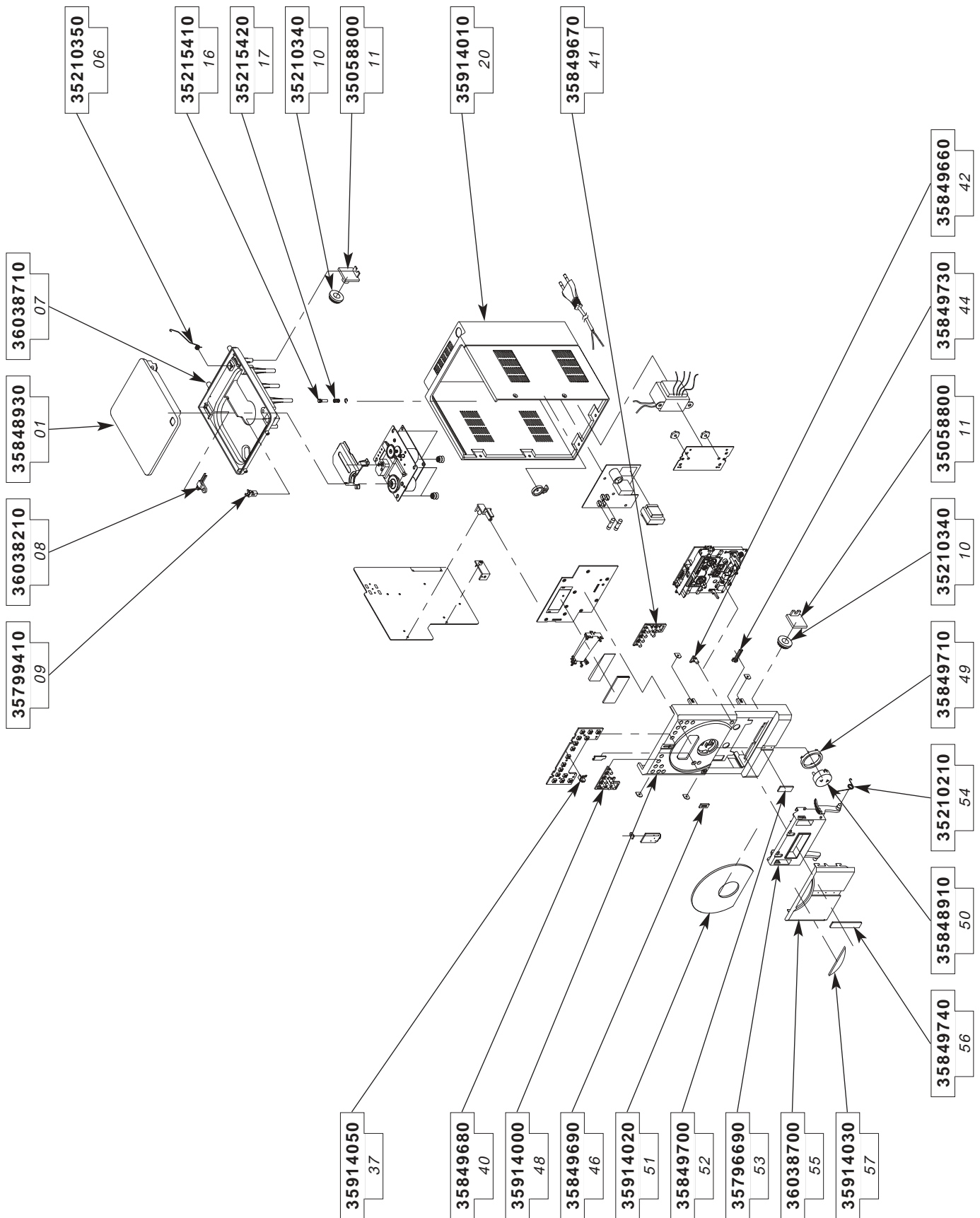
**MECHANISM
MECANIQUE
MECHANIK
MECCANICA
MECANISMO**

KSM213CLDT OPTICAL PLAYER W/O SERVO BD 56033140 KSM213CLDT LECTEUR OPTIQUE SANS SVB KSM213CLDT CD-LAUFWERK OHNE SVB KSM213CLDT ASSIEME OTTICA SENZA SVB KSM213CLDT MECANISMO OPTICO SIN SVB	
CASSETTE MECHANISM(W99BS-2004A) 36038020 MECANIQUE CASSETTE(W99BS-2004A) CASSETTENLAUFWERK(W99BS-2004A) MECCANICA CASSETTA(W99BS-2004A) MECANISMO CASSETTE(W99BS-2004A)	
COUNTER CENTRIRING HOLDER 35215460 SUPPORT CONTRE CENTREUR GEGENZENTRIERTSTUECK HALTER SUPPORTO CONTROCENTRATORE SOPORTE CONTRA ADAPTADOR	
BUSH RUBBER CD FRONT 35215320 AMORTISSEUR CAOUTCHOUC CD AVANT DAEMPER GUMMI CD VORN AMMORTIZZATORE DI GOMMA CD ANTERIORE AMORTIGUADOR DE GOMA CD DELANTERA	
BUSH RUBBER CD REAR 35215310 AMORTISSEUR CAOUTCHOUC CD ARRIERE DAEMPER GUMMI CD HINTEN AMMORTIZZATORE DI GOMMA CD POSTERIORE AMORTIGUADOR DE GOMA CD TRASERA	
	
CS86M UM TH 56191780 CS86M NU TH CS86M BA TH CS86M IU TH CS86M IU TH	
CS86M PARTS LIST 36038190 CS86M LISTE DE PIECES DETACHEES CS86M ERSATZTEILLISTE CS86M LISTA PARTI DI RICAMBIO CS86M LISTA DE PIEZAS DE REPUESTO	

**CHASSIS AND PRESENTATION
CHASSIS ET PRESENTATION
CHASSIS UND GEHAEUSETEILE
TELAIO E DI PRESENTAZIONE
CHASIS Y PRESENTACION**

01	CD DOOR VOLET CD CD KLAPPE SPORTELO CD TAPA CD	35848930
06	SPRING TORSION CD DOOR RESSORT A EPINGLE VOLET CD NADELFEDER CD KLAPPE MOLLA DI TORSIONE SPORTELO CD RESSORTE HORQUILLA TAPA CD	35210350
07	SUPPORT CD MECHANISM SUPPORT MECANIQUE CD HALTER CD LAUFWERK SUPPORTO MECCANICA CD SOPORTE MECANISMO CD	36038710
08	LEAF SWITCH R=Y (CD DOOR) INTERRUPTEUR A LAMES R=Y (CD DOOR) FEDERUNTERBRECHER R=Y (CD DOOR) INTERRUTTORE A LAMINES R=Y (CD DOOR) INTERRUPTOR DE CUCHILLA R=Y (CD DOOR)	36038210
09	LOCK CD DOOR VERROU VOLET CD RIEGEL CD KLAPPE CHIUSURA SPORTELO CD CERROJO TAPA CD	35799410
10	CD DOOR DAMPER GEAR ROUE DENTEE VOLET CD ZAHNRAD CD HALTER RUOTA DENTATA SPORTELO CD RUEDA DENTADA TAPA CD	35210340
11	GEAR WHEEL CD HOLDER SUPPORT ROUE DENTEE VOLET CD HALTER ZAHNRAD SUPPORTO RUOTA DENTADA SPORTELO CD SOPORTE RUEDA DENTADA TAPA CD	35058800
16	CD OPEN LEVER LEVIER OUVERTURE VOLET CD HEBEL DOOR CD LEVA APERTURA SPORTELO CD LEVA APERTURA TAPA CD	35215410
17	CD EJECT SPRING RESSORT VOLET CD FEDER CD KLAPPE MOLLA SPORTELO CD RESSORTE TAPA CD	35215420
20	REAR PANEL COFFRET ARRIERE RUECKWAND PANNELLO POSTERIORE TAPA POSTERIOR	35914010
37	ON/OFF BUTTON TOUCHE MARCHÉ/ARRET EIN-AUS TASTE TASTO ACCESO/SPENTO TECLA MARCHA/PARADA	35914050
40	BUTTON STRIP 7 KEYS LEFT BARRETTE DE 7 TOUCHES GAUCHE TASTENLEISTE 7 TASTE LINKS PIATTINA 7 TASTI SINISTRA PLACA DE 7 TECLAS IZQUIERDA	35849680
41	BUTTON STRIP 7 KEYS RIGHT BARRETTE DE 7 TOUCHES DROITE TASTENLEISTE 7 TASTE RECHTS PIATTINA 7 TASTI DESTRA PLACA DE 7 TECLAS DERECHA	35849670

42	EQ KNOB TOUCHE EQ EQ TASTE TASTO EQ TECLA EQ	35849660
44	LOCK CASSETTE DOOR VERROU DU VOLET CASSETTE RIEGEL CASSETTE KLAPPE CHIUSURA SPORTELO CASSETTA ERROJO TAPA CASSETTE	35849730
46	FRONT PANEL BUTTON TRIM UPPER BOUTON HAUT DECORATION FACADE FRONTPLATTE ZIERRAHMEN TASTE OBEN FINIZIONE TASTO SUPERIOR PANNEL. FRONTAL TECLA EMBELLECEDOR SUPERIOR PANEL FRONT.	35849690
48	FRONT PANEL FACADE FRONTPLATTE PANNELLO FRONTALE PANEL FRONTAL	35914000
49	BUTTON VOLUME RING BAGUE TOUCHE VOLUME TASTE VOLUME RING ANELLO TASTO VOLUME ANILLO TECLA VOLUME	35849710
50	VOLUME KNOB BOUTON VOLUME LAUTSTAERKEKNOPF ROTELLA DI PLASTICA VOLUME RUEDA PLASTICA MANDO VOLUMEN	35848910
51	DISPLAY WINDOW GLACE AFFICHEUR ANZEIGEFENSTER VETRO DEL VISUALIZZATORE CRISTAL DEL VISUALIZADOR	35914020
52	FRONT PANEL BUTTON TRIM DOWNER BOUTON DECORATION BAS FACADE FRONTPLATTE ZIERRAHMEN TASTE UNTEN FINIZIONE TASTO INFERIOR PANNEL. FRONTAL TECLA EMBELLECEDOR INFERIOR PANEL FRONT.	35849700
53	CASSETTE HOLDER PORTE CASSETTE CASSETTENHALTER PORTACASSETTA PORTACASSETTE	35796690
54	SPRING TORSION HOLDER CASSETTE RESSORT A EPINGLE VOLET CASSETTE NADELFEDER CASSETTENKLAPPE MOLLA DI TORSIONE PORTACASSETTA RESORTE HORQUILLA PORTACASSETTE	35210210
55	CASSETTE FLAP DOOR VOLET CASSETTE CASSETTENKLAPPE SPORTELO CASSETTA TAPA CASSETTE	36038700
56	CASSETTE FLAP DOOR TRIM DECORATION VOLET CASSETTE ZIERRAHMEN CASSETTENKLAPPE FINIZIONE DI SPORTELO CASSETTA EMBELLECEDOR TAPA CASSETTE	35849740
57	CASSETTE FLAP WINDOW GLACE VOLET CASSETTE FENSTER CASSETTENKLAPPE VETRO SPORTELO CASSETTA CRISTAL TAPA CASSETTE	35914030



CHASSIS AND PRESENTATION / CHASSIS ET PRESENTATION / CHASSIS UND GEHAUSESEITE / TELAIO E DI PRESENTAZIONE / CHASIS Y PRESENTACION

CS86M

4/4

The description and characteristics given here are of informative significance only, and non committal. To keep up the high quality of our products, we reserve the right to make any changes or improvement without previous notice. • Les descriptions et caractéristiques figurant sur ce document sont données à titre d'information et non d'engagement. En effet, soucieux de la qualité de nos produits, nous nous réservons le droit d'effectuer, sans préavis, toute modification ou amélioration. • Die Beschreibungen und Daten in dieser Anleitung dienen nur zur Information und sind nicht bindend. Um die Qualität unserer Produkte ständig zu verbessern, behalten wir uns das Recht auf Änderungen vor. • Le descrizioni e le caratteristiche date su questo documento sono fornite a semplice titolo informativo e senza impegno. Ci riserviamo il diritto di eseguire, senza preavviso, qualsiasi modifica o miglioramento. • Las descripciones y características que figuran en este documento se dan a título de información y no de compromiso. En efecto, en bien de la calidad de nuestros productos, nos reservamos el derecho de efectuar, sin previo aviso, cualquier modificación o mejora.