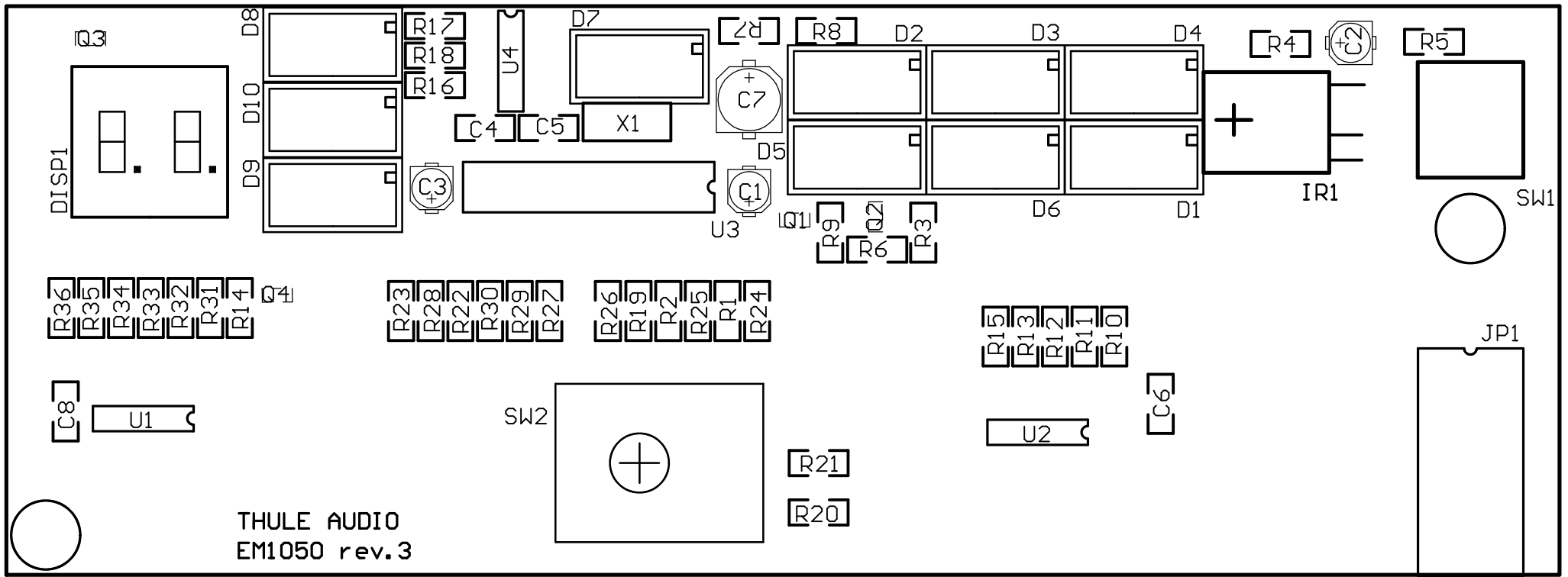
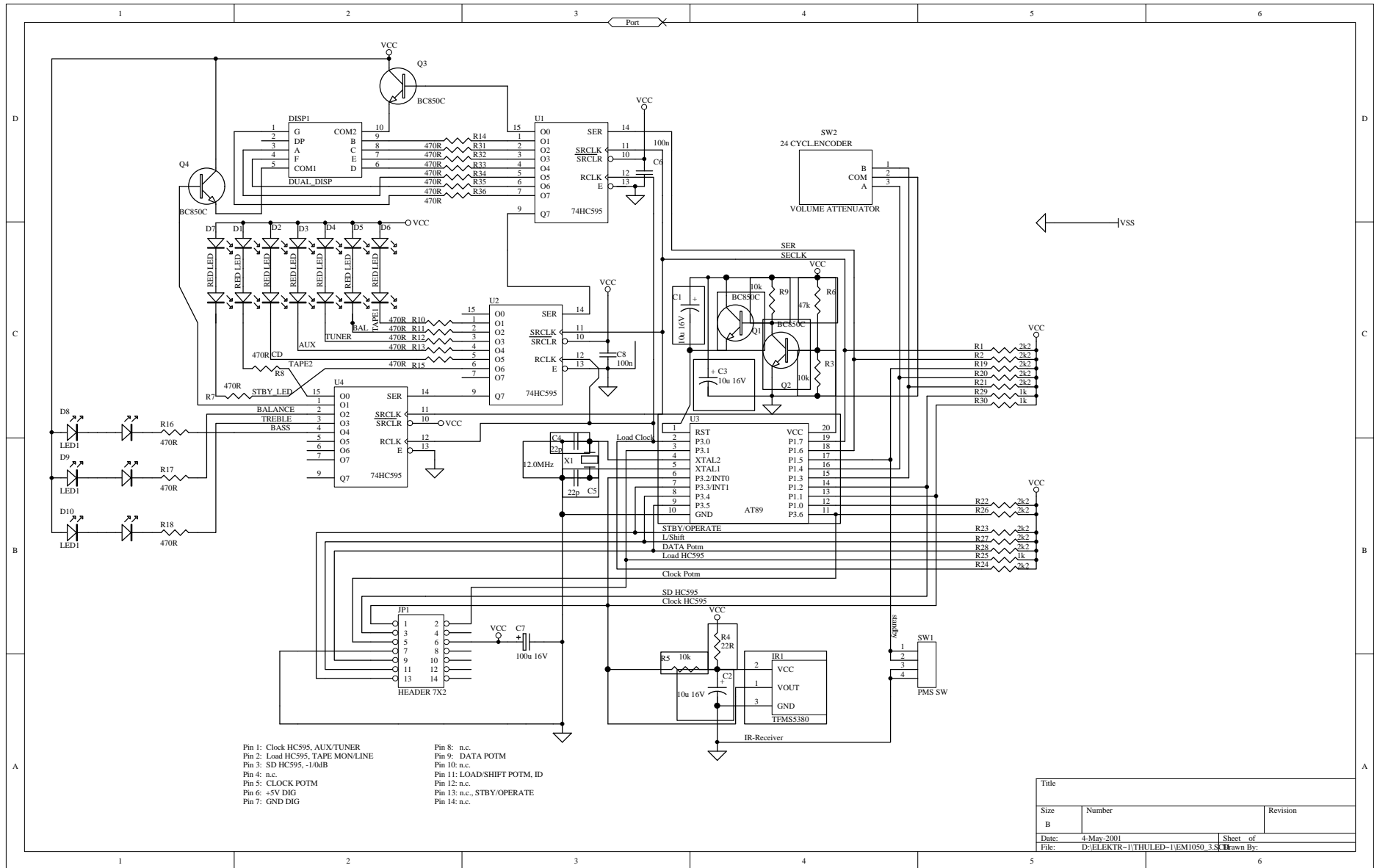


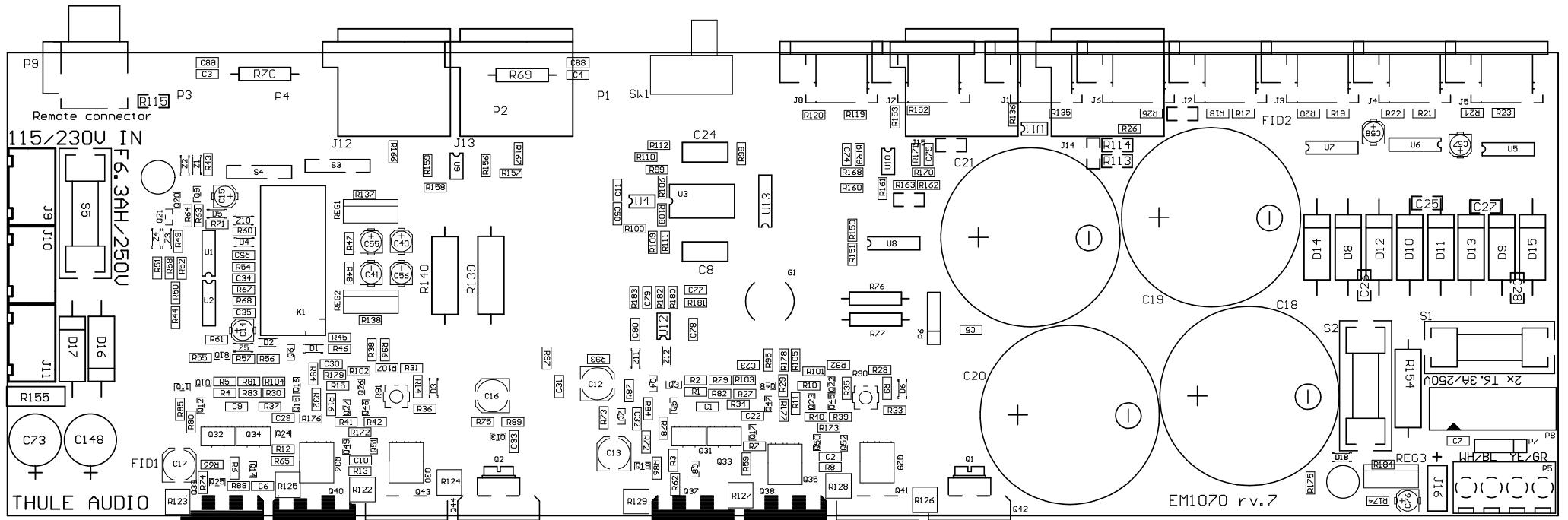
service manual for Thule Audio

IA100





Title		
Size	Number	Revision
B		
Date:	4-May-2001	Sheet of
File:	D:\ELEKTR-1\THULED-1\EM1050_3.S	Drawn By:



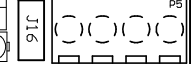
115/230V IN

F6.3AH/250V

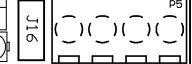
THULE AUDIO

EM1070 rv.7

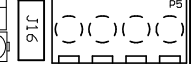
REG3 + WHZBL YE/GR



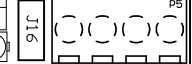
J16



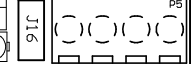
P8



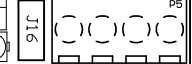
P5



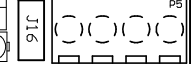
P7



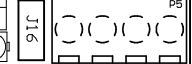
P6



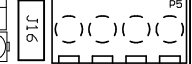
P4



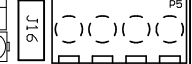
P3



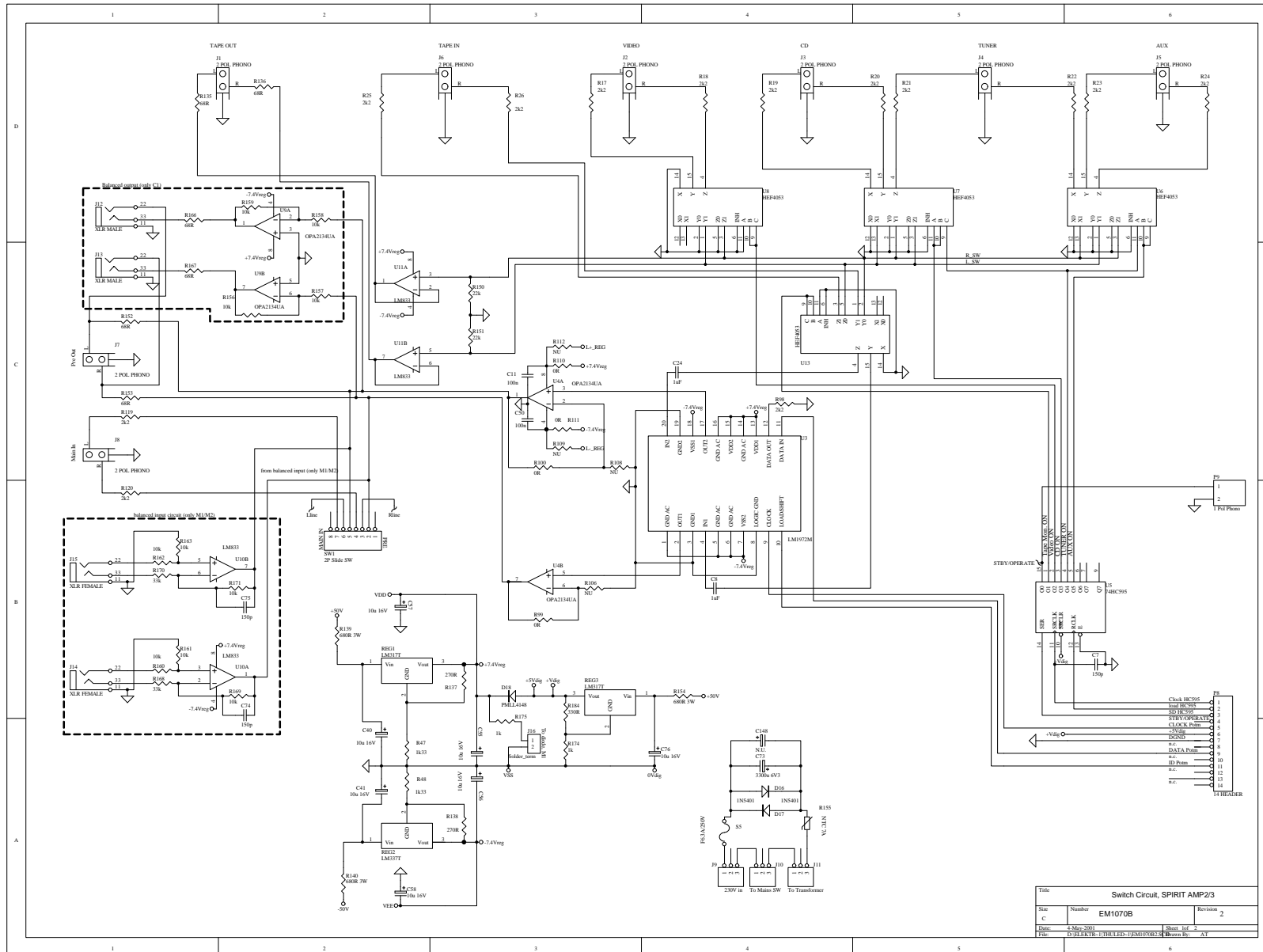
P2



P1



P0



Title			Switch Circuit, SPIRIT AMP 2/3	
Rev	Number	Revision		
C	EM1070B	2		
Date	4-May-2001	Sheet	1 of 1	
File	D:\JFKRIB-1\THU-LEC-EM1070B-2	Drawn By	AT	

- CONFIDENTIAL -

