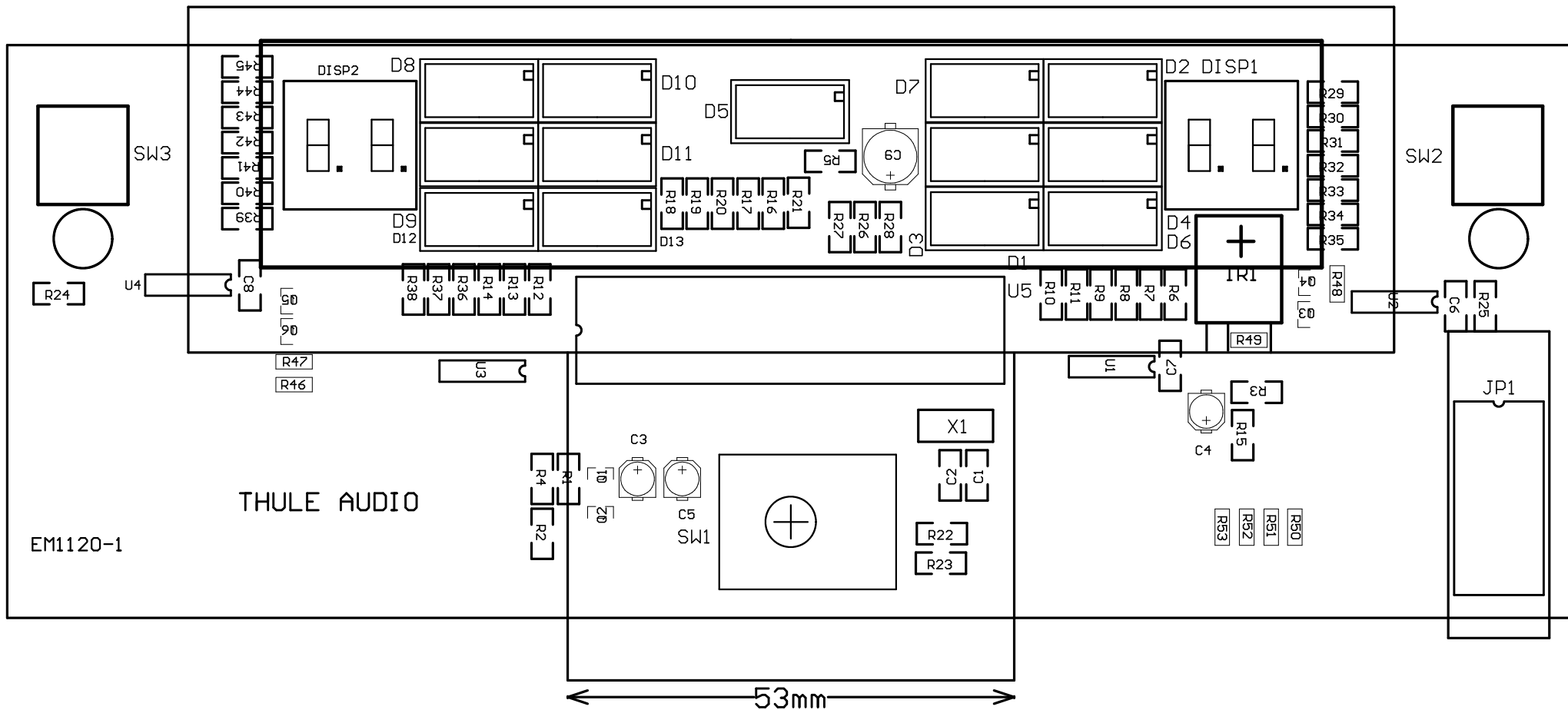
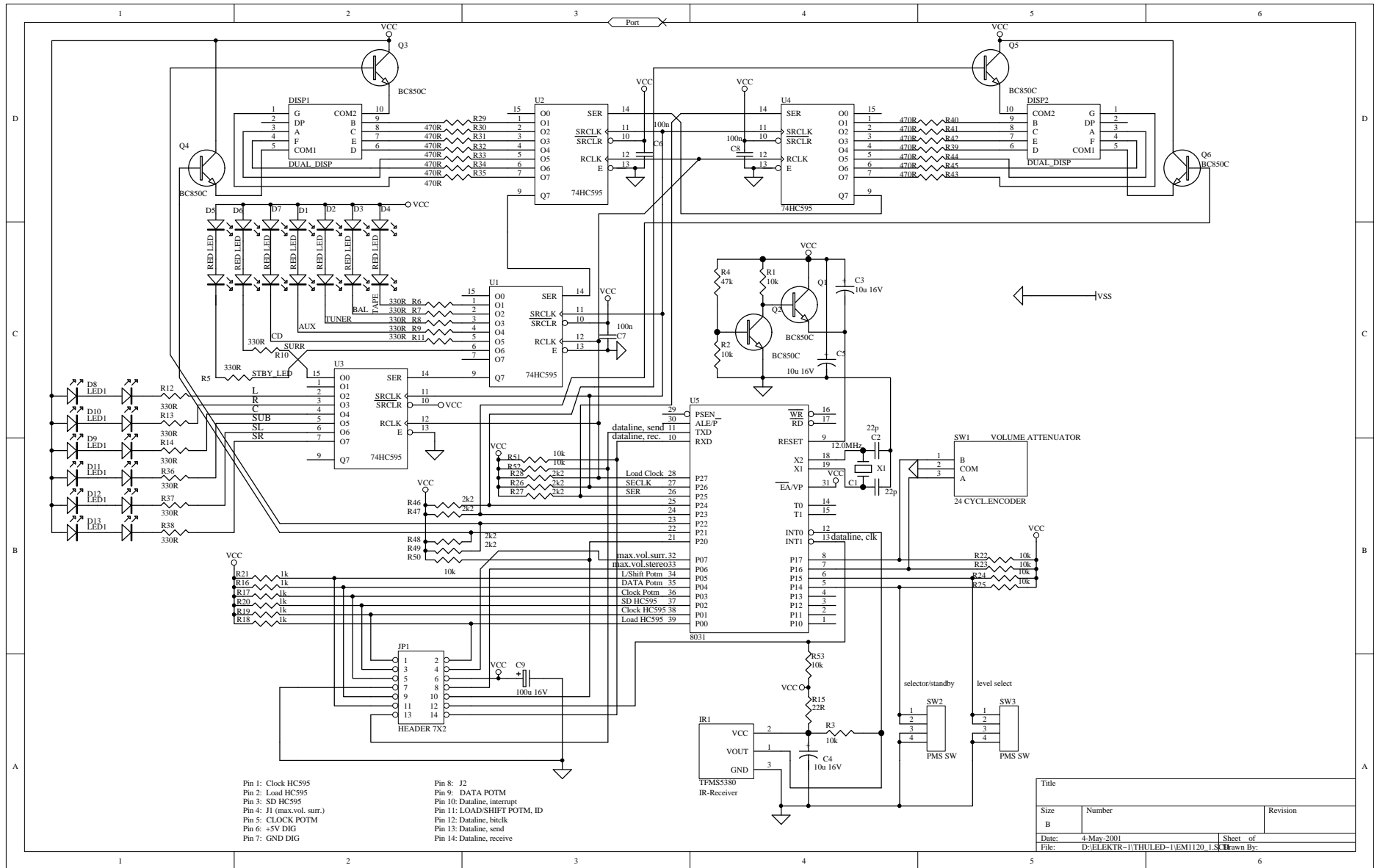


SERVICEMANUAL FOR THULE AUDIO

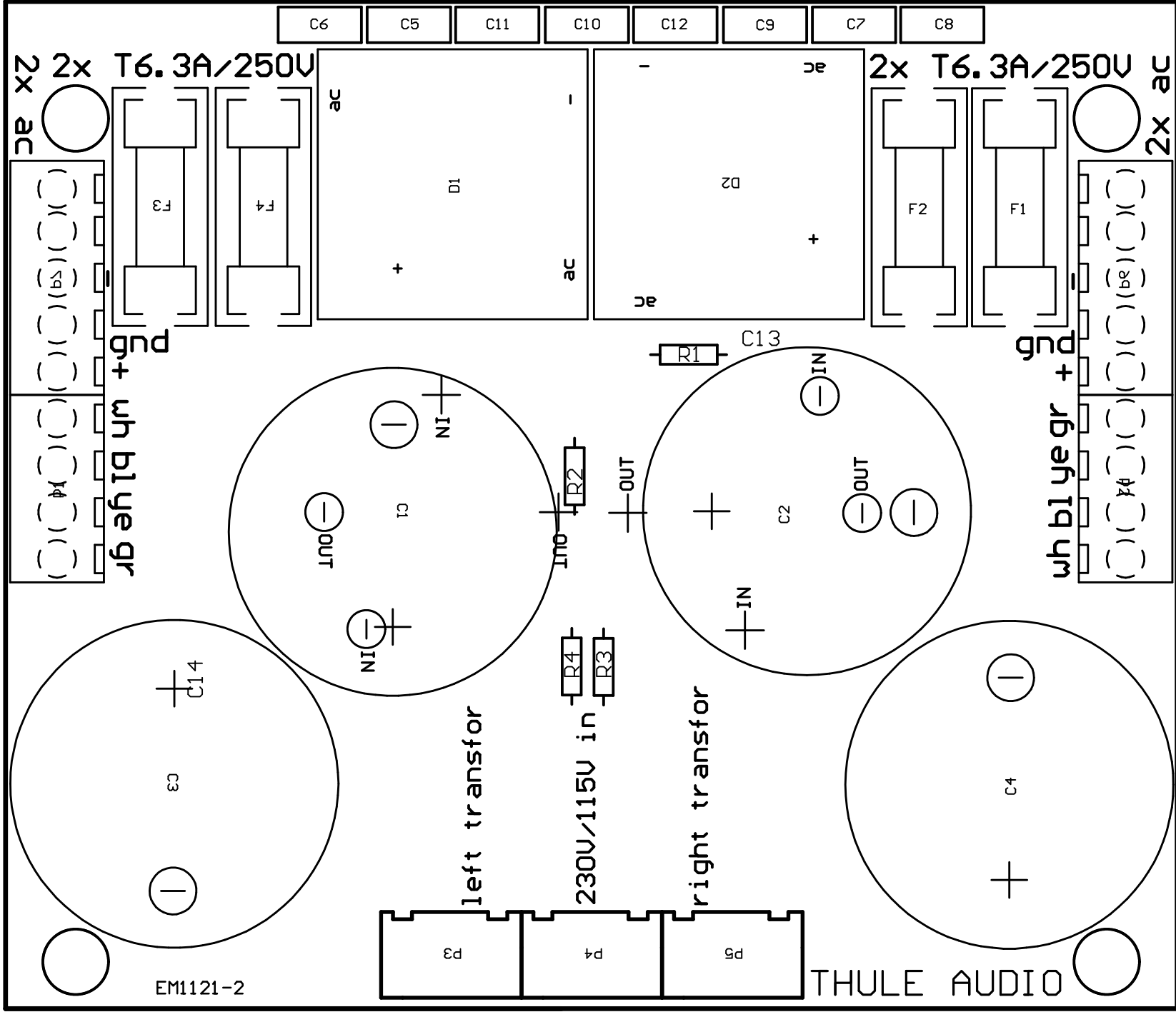
IA250B

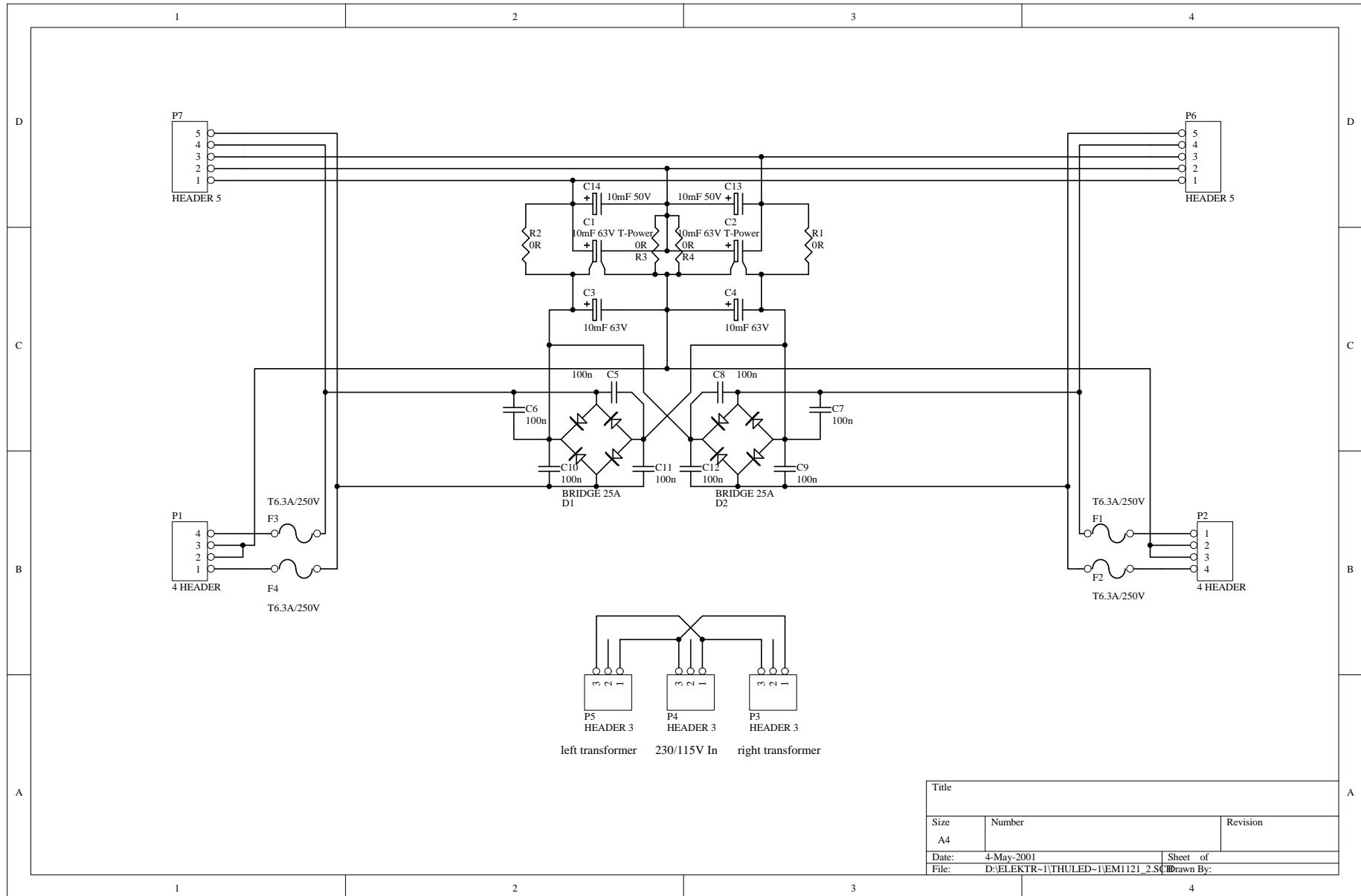




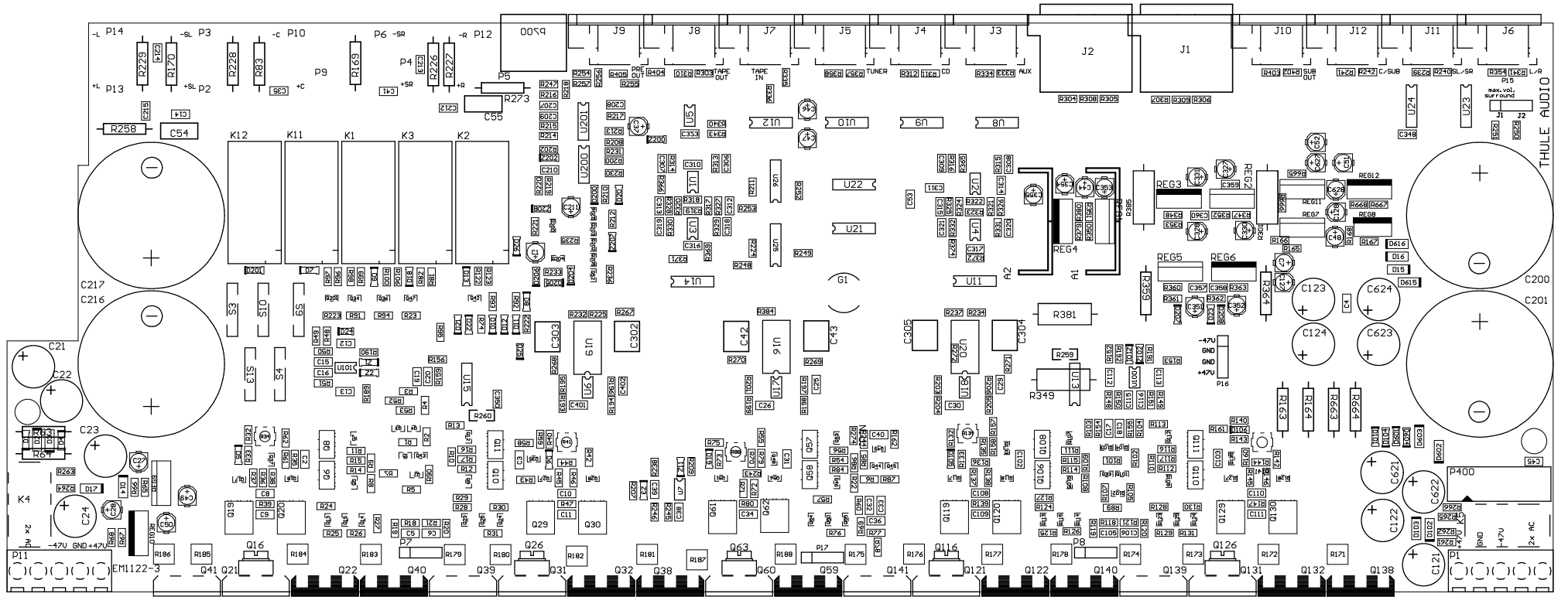
- Pin 1: Clock HC595
- Pin 2: Load HC595
- Pin 3: SD HC595
- Pin 4: H (max.vol. surr.)
- Pin 5: CLOCK POTM
- Pin 6: +5V DIG
- Pin 7: GND DIG
- Pin 8: J2
- Pin 9: DATA POTM
- Pin 10: Dataline, interrupt
- Pin 11: LOAD/SHIFT POTM, ID
- Pin 12: Dataline, bitclk
- Pin 13: Dataline, send
- Pin 14: Dataline, receive

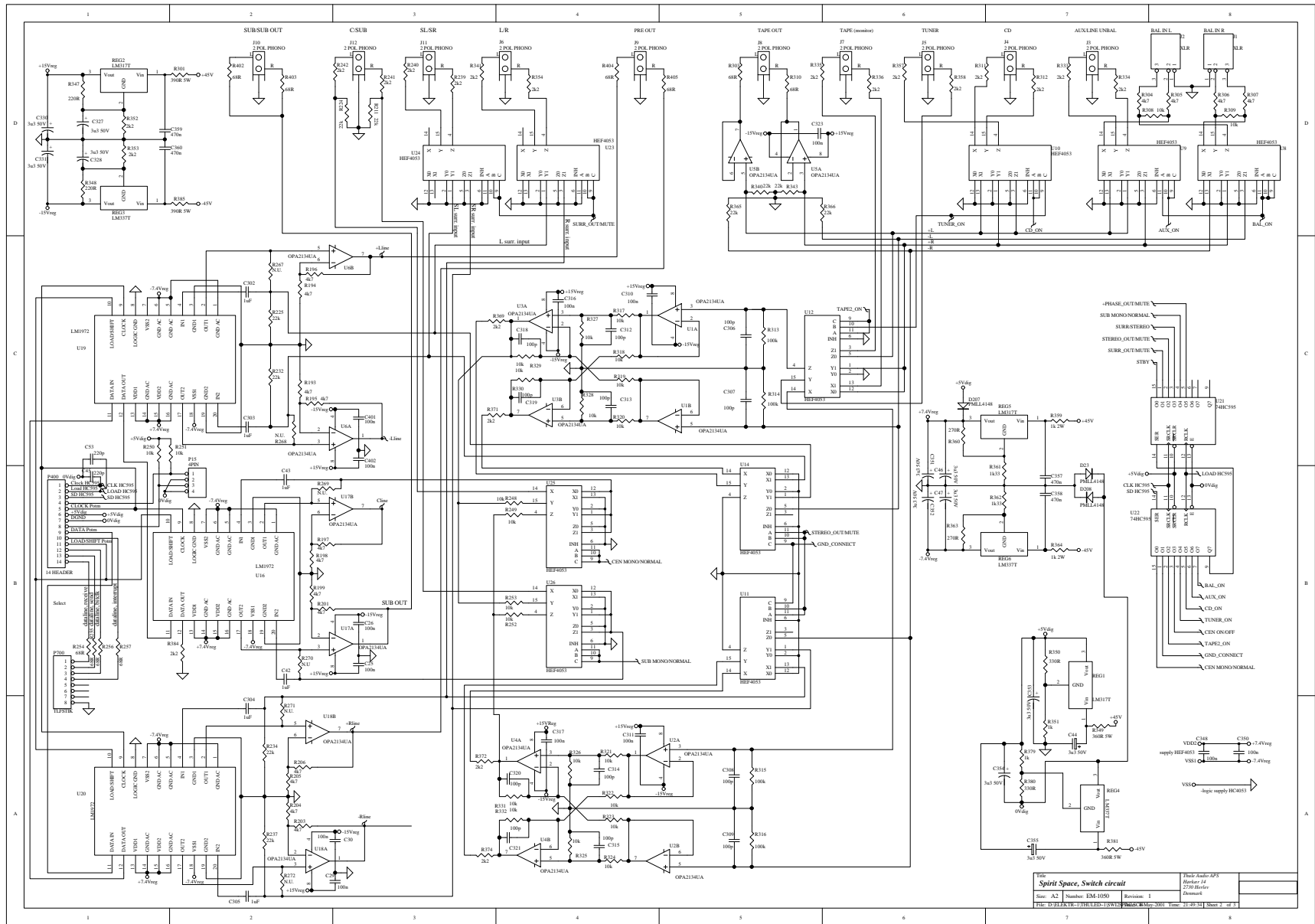
Title		
Size	Number	Revision
B		
Date:	4-May-2001	Sheet of
File:	D:\ELEKTR-1\THULED-1\EM1120_1.S	Drawn By:





Title		
Size	Number	Revision
A4		
Date:	4-May-2001	Sheet of
File:	D:\ELEKTR-1\THULED-1\EM1121_2.SCH	Drawn By:

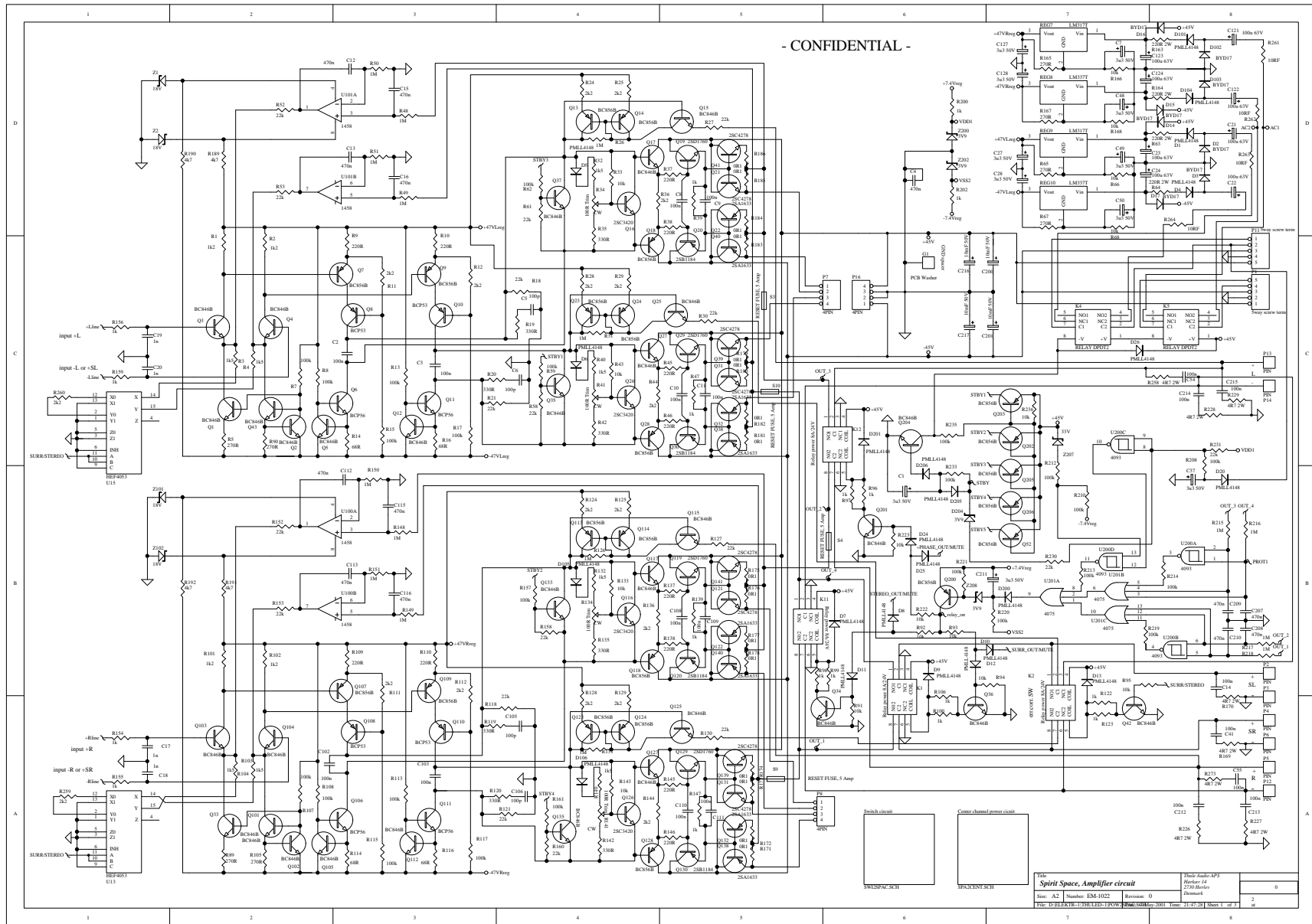




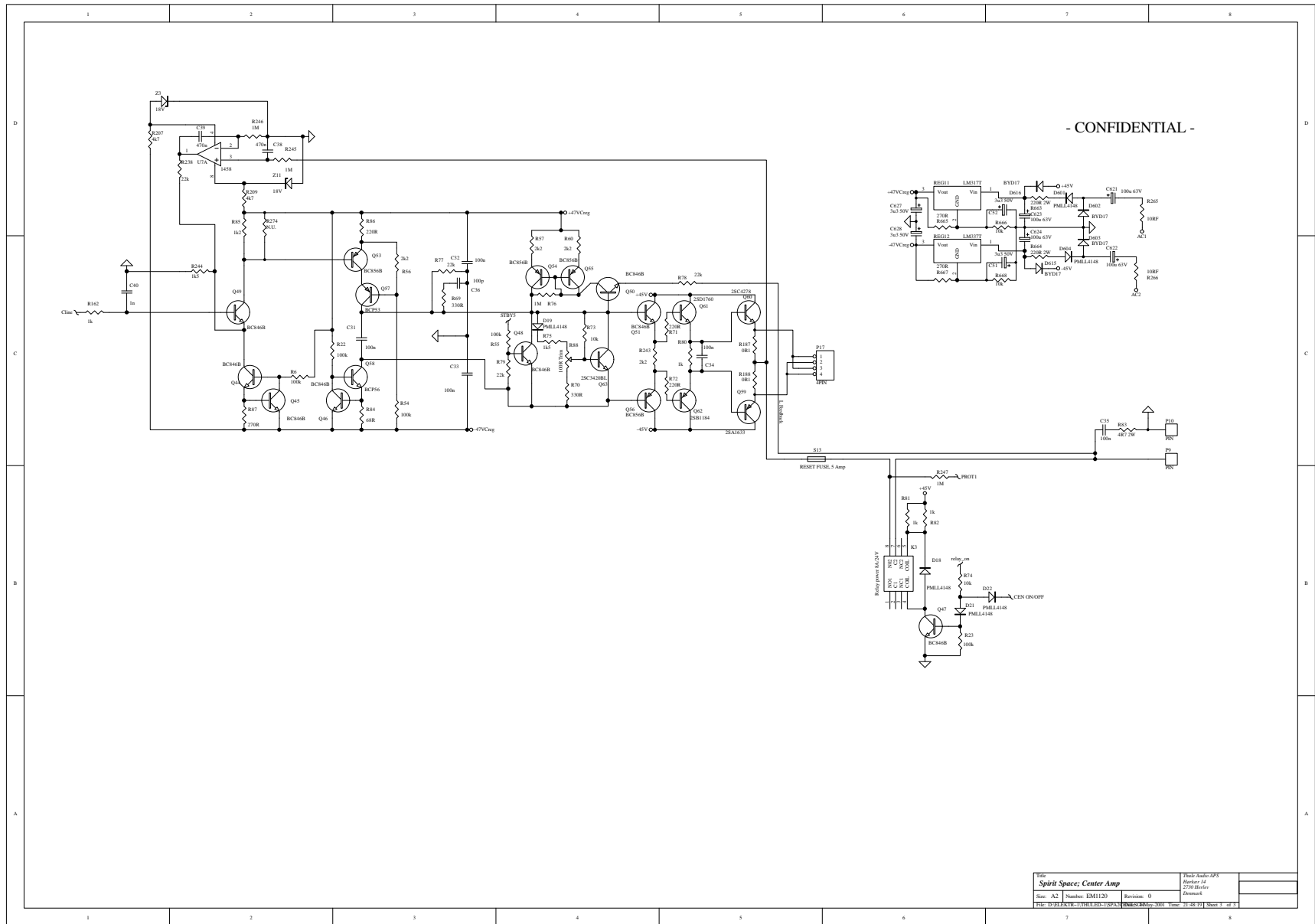
File: **Spirit Space, Switch circuit**
 Size: A2 Number: EM-1050 Revision: 1
 Title: U13,U14,U15,U16,U17,U18,U19

Printed Author: LPS
 Member: J4
 27/04/2006
 Denmark

- CONFIDENTIAL -



Title		Main Audio Amp	
Rev: A2		Revision: 0	
Date: 11/17/2011		Sheet 1 of 1	



- CONFIDENTIAL -

Title		Plan's Number: LPS	
Spirit Space; Center Amp		Revista: 14	
Size: A2	Number: EM1120	Revision: 0	Dimension:
FILE: W:\ELEKTRONIK\1\HYBRID-15A\PS\PS-01.dwg Date: 21.08.19 Sheet 1 of 1			