



**SERVICE MANUAL
DOCUMENTATION TECHNIQUE
TECHNISCHE DOKUMENTATION
DOCUMENTAZIONE TECNICA
DOCUMENTACION TECNICA**

THOMSON

**DPL 500
DPL 550 HT**

Version (PC*): A

*PC: The version code is indicated either in the battery compartment or on the back of the unit - ce code version est indiqué dans le compartiment à piles ou au dos de l'appareil - PC: Version des Geräts wird im Batteriefach oder auf der Rückseite angegeben - il codice della versione è indicato nello scompartimento delle batterie o sul retro dell'apparecchio - el código de la versión está indicado en el compartimento de las pilas o en la parte trasera del aparato.



**Technical data - Caractéristiques principales
Technische Daten - Dati tecnici - Características del aparato**

Type of set : Stereo pre-main amplifier Type d'appareil : Préampli-ampli stéréophonique Geräteart : Stéreo-Vollverstärker Tipo d'apparecchio : Preamplificatore-amplificatore stereofonico Tipo de aparato : Preamplificador-amplificador estereofónico	
Power supply : Alimentation : Stromversorgung : ~ 230 V - 50Hz Alimentazione : Alimentación :	Nominal output power : Puissance nominale de sortie : Nennausgangsleistung : 5 x 50 W Potenza nominale di uscita : + 1 x 50 W Potencia nominal de salida :
FM - MF : 87.5 - 108 MHz MW - PO : 522 - 1620 kHz LW - GO : 153 - 279 kHz	Sensitivity : Sensibilité : FM - MF : 6 µV (S/N = 26 dB) Empfindlichkeit : MW - PO : 600 µV/m (S/N = 20 dB) Sensibilità : LW - GO : 1500 µV/m (S/N = 20 dB) Sensibilidad :
Frequency response : Courbe de réponse : Front amp 15Hz - 70 kHz Frequenzgang : Rear amp 120Hz - 7kHz Curva di risposta : Sub woofer amp 20Hz - 70kHz Curva de respuesta :	Signal to noise ratio : Rapport signal / bruit : Geräuschspannungsabstand : 65 dB à 1kHz Rapporto segnale / disturbo : Relación señal / ruido :
Total harmonic distortion : Distorsion harmonique : Klirrfaktor : 0,2 % (-6 dB 1kHz) Distorsione armonica : Distorsión armónica :	Stereo separation : Diaphonie : Übersprechdämpfung : 60 dB à 1kHz Diafonia : Diafonía :
Input sensitivity Sensibilité des entrées Eingangsempfindlichkeit Sensibilità dei ingressi Sensibilidad de las entradas	200mV



WARNING : Before servicing this chassis read the safety recommendations.
ATTENTION : Avant toute intervention sur ce châssis, lire les recommandations de sécurité.
ACHTUNG : Vor jedem Eingriff auf diesem Chassis, die Sicherheitsvorschriften lesen.
ATTENZIONE : Prima di intervenire sullo chassis, leggere le norme di sicurezza.
IMPORTANTE : Antes de cualquier intervención, leer las recomendaciones de seguridad.

Code : 351 293 20 - 0800 / 2,7M - Print. - PAV 5005R/5005

PARTS LIST
LISTE PIECES DETACHEES
ERSATZTEILLISTE
LISTA PARTI DI RICAMBIO
LISTA DE PIEZAS DE REPUESTO

THOMSON
DPL550HT
Chassis PAV5005

MODULES

MAIN	MAIN	R 35128710
AC3	AC-3	R 35128740
AMPL	AMPLI	R 35128720
KDB	DISPLAY/CONTROL	R 35128700
RFFI	TUNER	35127540
SKC	SCART	R 35129500
SVD	S-VIDEO/SPEAKER	R 35128730



IC001 ,002,003, 012,402,403, 404,405,406, 408,409,410, 412,413,414, 702	NJM2068DD FLAT	35109040
IC004	CS492305-CL FLAT	35129170
IC005	CS4226 FLAT	35108750
IC006	AT27LV010A FLAT	35129180
IC007	TC74VHC244MX FLAT	35108710
IC009,011	F/F74VHC574MX FLAT	35108720
IC101 ,104	KIA7806PI	35128310
IC102	KIA7815PI	35128320
IC103	KIA7915PI	35093430
IC105	KIA7905PI	35108640
IC106	IC KIA7805PI 5V	20295270
IC107 ,108	BA033T	35108650
IC109	BU4053BC	35128180
IC300	CXP82860-XX FLAT	35129190
IC301 ,302	NJM2296 FLAT	35128070
IC303	MC14094BD/HEF4094BT/ BU4094BF FLAT	20016020
IC401	KIC9162AN	35128300
IC407	TC9482N	35108660
IC411	TC9184AP	35128170
IC701 ,704	LC78211DIP30	35093840
IC801	NJM2296D	35108500
IC802	BU4094BCF FLAT	35045600
RM301	PIC-21045TE2	35101740



Q0360 , Q360 , Q909	DTA114YKA	35095350
Q001	KRC107S SMD	55051240
Q102	MPSA56Y	35093400
Q103 ,604,619, 634,649,664, 680	2SA1266Y	20508210
Q104 ,105	2SC1740S/QRS/-T SMD	35105660
Q300	KTC3875S SMD	35033830
Q301 ,302,303, 304	DTC114YKA SMD	35095340
Q321	KTC3198BL	20508080
Q401 ,402,403, 404	DTA114YS	10212520
Q405 ,406,407, 408,409,410	KTD1302	35093290
Q411	DTC114TSSP	35108670
Q413	2SK117Y	35095520
Q601 ,602,603, 606,616,617, 618,621,631, 632,633,636, 646,647,648, 651,661,662, 663,666,677, 678,679,693	KTA1268GR	35093320
Q605 ,607,615, 620,622,630, 635,637,645, 650,652,660, 665,667,675, 691,692,699	KTC3200BL	20556600
Q608 ,623,638, 653,668,695	2SC4137	35108350
Q609 ,624,639, 654,669,694	KTA1024	35108380
Q610 ,625,640, 655,670,696	KTC3206	35128040
Q613 ,628,643, 658,673	2SD2493	35108360
Q614 ,629,644, 659,674	2SB1624	35108370
Q676	DTC114YSA	35108390
Q697	2SB1560	35127890
Q698	2SD2390	35127870
QL908 , QR908	DTC323TK SMD	35095360



D001	2012LTST LED SMD	35108700
D004 ,008,009, 127,129,300, 301,302,309, 310,312,401, 402,403,404, 701,751,800, 801	1SS355 SMD	20726770
D101 ,102,103, 104,105,107, 108,109,113, 114,115,116, 117,118,119, 120,316	1N4003	44014904
D110	ZPD30 DIODE	44016101
D111	BZX55C9V1	90578100
D112	KBPC1504W	35129140
D124	BZX55B5V1/ZPD5V1 2%	44035702
D360	LTL-1CHE3 LED	35095420
D601 ,602,603, 604,605,606, 607,608,609, 610,611,612	1N4148	44009209
D771	BZX55B12	30948680



X002	12M288HZ	35128290
X300	10M0HZ	35128130



EN301		35128160
VR301		35092990



MR601 ,602,603, 604,605,606	OR39 OHM 5W	△ 35108400
---------------------------------------	-------------	------------

R : RECYCLED PART
: PIECE RECYCLEE
: AUSTAUSCHTEILE
: RICAMBIO RICICLATO
: MODULO REPROCESADO

For any requests, please contact THOMSON multimedia after sales service area
 Pour toutes précisions, contactez votre service apres vente local THOMSON multimedia
 Für weitere Auskünfte, wenden Sie sich bitte an die THOMSON multimedia Kundendienstes
 Per precisazioni, contattate l'assistenza tecnica THOMSON multimedia
 Para cualquier pregunta, por favor contactar con el responsable de zona del servicio postventa de THOMSON multimedia

08 / 2000 **35129370**
REV. N° 0 00 / 00 **00000000**
1/3



C120,121 10000UF 50V 35129120
C307 0U047F 5V5 35108410



△ 35128900

TRAN1 △ 35093440

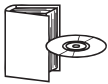
**OTHER PARTS
AUTRES PIECES
SONSTIGE TEILE
ALTRE PARTI
OTRAS PIEZAS**

CABLE FLAT 15 PINS 35128210
CABLE NAPPE 15 VOIES
FOLIENKABEL 15-POLIG
CAVO FALDA 15 SPINOTTI
CABLE 15 PUNTOS
CABLE FLAT 33 PINS 35128220
CABLE NAPPE 33 VOIES
FOLIENKABEL 33-POLIG
CAVO FALDA 33 SPINOTTI
CABLE 33 PUNTOS
ON/OFF SWITCH △ 35093910
CONTACTEUR MARCHE/ARRET
EIN-AUS SCHALTER
CONTATTORE ACCESO/SPEN TO
CONTACTOR MARCHA/PARADA
CN301 SOCKET CONNECTOR 33 PINS 35108440
CONNECTEUR 33 VOIES
BUCHSENLEISTE 33-POLIG
CONNETTORE 33 VIE
CONECTOR 33 PUNTOS
CP301 SOCKET CONNECTOR 33 PINS 35109160
CONNECTEUR 33 VOIES
BUCHSENLEISTE 33-POLIG
CONNETTORE 33 VIE
CONECTOR 33 PUNTOS
DVD,MON,
SAT S-VIDEO JACK SOCKET 35127920
PRISE JACK S-VIDEO
S-VIDEO JACK-BUCHSE
PRESA JACK S-VIDEO
TOMA JACK S-VIDEO
F101 3A15T TIME-LAG FUSE △ 10119590
3A15T FUSIBLE TEMPORISE
3A15T SICHERUNG
3A15T FUSIBILE TEMPORIZZATO
3A15T FUSIBILE TEMPORIZADO
F103 315MAT TIME-LAG FUSE △ 48017600
315MAT FUSIBLE TEMPORISE
315MAT SICHERUNG
315MAT FUSIBILE TEMPORIZZATO
315MAT FUSIBILE TEMPORIZADO
F104,105,106,
107 1A6T TIME-LAG FUSE △ 48064700
1A6T FUSIBLE TEMPORISE
1A6T SICHERUNG
1A6T FUSIBILE TEMPORIZZATO
1A6T FUSIBILE TEMPORIZADO
FL300 DISPLAY LCD 35128140
AFFICHEUR LCD
LCD-ANZEIGE
VISUALIZZATORE LCD
VISUALIZADOR LCD
GSW30 MICROSWITCH 35108020
MICRO CONTACTEUR
MIKROSCHALTER
MICROINTERRUTTORE
MICROCONTACTOR

HP601 JACK SOCKET 35097390
PRISE JACK
BUCHSE
PRESA JACK
TOMA JACK
JA101,JAC1,
RA752 CINCH SOCKET 35093270
PRISE CINCH
CHINCH-BUCHSE
PRESA CINCH
TOMA CINCH
JA300 CINCH SOCKET 35092980
PRISE CINCH
CHINCH-BUCHSE
PRESA CINCH
TOMA CINCH
JA301 JACK SOCKET 35108480
PRISE JACK
JACK-BUCHSE
PRESA JACK
TOMA JACK
JA402,RA703 CINCH SOCKET 6P 35128230
PRISE CINCH 6P
CHINCH-BUCHSE 6P
PRESA CINCH 6P
TOMA CINCH 6P
JAC2 OPTICAL SOCKET 35109050
PRISE OPTIQUE
OPTICAL-BUCHSE
PRESA OTTICA
TOMA OPTICO
JK701 SCART SOCKET 35129150
PRISE PERITEL
EURO-AV-BUCHSE
EUROPRESA NORMALIZZATA
EUROCONNECTOR
RA705 LOUDSPEAKER SOCKET 4P 35129110
PRISE HAUT PARLEUR 4P
LAUTSPRECHERBUCHSE 4P
PRESA ALTOPARLANTE 4P
TOMA ALTAVOZ 4P
RA750,751 CINCH SOCKET 3P 35128240
PRISE CINCH 3P
CHINCH-BUCHSE 3P
PRESA CINCH 3P
TOMA CINCH 3P
RY101 RELAY 10A 12V △ 35108560
RELAIS 10A 12V
RELEE 10A 12V
RELEE 10A 12V
RY301 RELAY 24V 3A △ 55091520
RELAIS 24V 3A
RELEE 24V 3A
RELEE 24V 3A
SP1 LOUDSPEAKER SOCKET 35093870
PRISE HAUT PARLEUR
LAUTSPRECHERBUCHSE
PRESA ALTOPARLANTE
TOMA ALTAVOZ
SW301,302,
303,304,305,
306,307,308,
309,310,311,
312,313,314,
315,316,317,
318,319,320,
321,322,323,
324,325,326,
327,328,329,
330 MICROSWITCH 20404680
MICRO CONTACTEUR
MIKROSCHALTER
MICROINTERRUTTORE
MICROCONTACTOR

**EQUIPMENT/PRESENTATION
EQUIPEMENT/PRESENTATION
AUSSTATTUNG/GEHAEUSE
PARTI VARIE
EQUIPO/PRESENTACION**

KNOB JOG 35128810
BOUTON JOG
KNOPF JOG
MANOPOLA JOG
RUEDA JOG
CONNECTION LEAD 2+2 CINCH 25347770
CORDON DE LIAISON 2+2 CINCH
ANSCHLUSSKABEL 2+2 CINCH
CAVO DI ALLACCIAMENTO 2+2 CINCH
CABLE DE ENLACE 2+2 CINCH
CONNECTION LEAD 1+1 CINCH 35093990
CORDON DE LIAISON 1+1 CINCH
ANSCHLUSSKABEL 1+1 CINCH
CAVO DI ALLACCIAMENTO 1+1 CINCH
CAVO DI ALLACCIAMENTO 1+1 CINCH
FM ANTENNA 35103510
ANTENNE FM
FM ANTENNE
ANTENNA FM
ANTENA FM
AM ANTENNA 35127820
AM ANTENNE
ANTENNE AM
ANTENNA AM
ANTENA AM
FITTING RIGHT 35127840
CALE DROITE
POLSTER RECHTS
DISTRANZIATORE DESTRA
CALZO DERECHA
FITTING LEFT 35127860
CALE GAUCHE
POLSTER LINKS
DISTRANZIATORE SINISTRA
CALZO IZQUIERDA
POWER SUPPLY LEAD △ 35128050
CORDON D'ALIMENTATION
NETZKABEL
CAVO DI ALIMENTAZIONE
CABLE DE ALIMENTACION
FRONT PANEL 35128760
FACADE
FRONTPLATTE
PANNELLO FRONTALE
PANEL FRONTAL
FRONT PANEL TRIM 35128770
ENJOLIVEUR FACADE
ZIERRAHMEN FRONT PLATTE
FINIZIONE PANNELLO FRONTALE
EMBELLECEDOR DE PANEL FRONTAL
BUTTON STRIP 8T STADIUM/CONCERT/NIGHT 35128780
BARRETTE TOUCHES 8T STADIUM/CONCERT/NIGHT
TASTENLEISTE FUNKTIONEN 8T STADIUM/NIGHT
PIATTINA TASTI 8T STADIUM/CONCERT/NIGHT
PLACA DE TECLAS 8T STADIUM/CONCERT/NIGHT
RC500 REMOTE CONTROL 21111850
RC500 TELECOMMANDE
RC500 FERNBEDIENUNG
RC500 TELECOMANDO
RC500 TELEMANDO
BUTTON STRIP TUNING/SURROUND/6CH 35128800
BARRETTE TOUCHES 7T TUNING/SURROUND/6CH
TASTENLEISTE FUNKTIONEN TUNING/SURROUND
PIATTINA TASTI 7T TUNING/SURROUND/6CH
PLACA DE TECLAS 7T TUNING/SURROUND/6CH
LOUDSPEAKER BOX SUBWOOFER 35129100
ENCEINTE ACOUSTIQUE SUBWOOFER
LAUTSPRECHERBOX SUBWOOFER
CASSA ACUSTICA SUBWOOFER
CAJA ACUSTICA SUBWOOFER

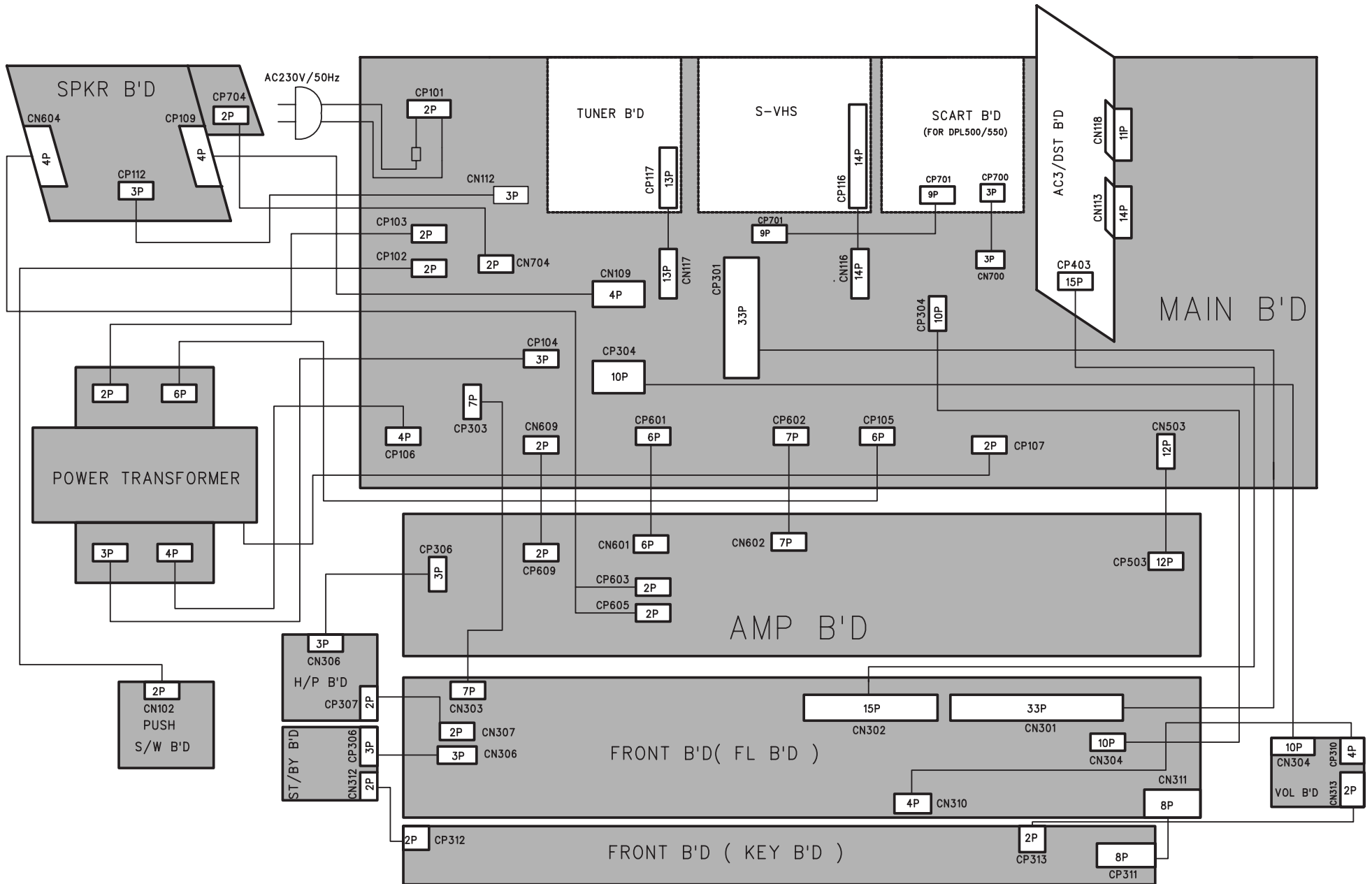
STANDBY BUTTON TOUCHE VEILLE TASTE STANDBY TASTO STANDBY TECLA STANDBY	35128820		
SET/DEMO BUTTON TOUCHE SET/DEMO SET/DEMO TASTE TASTO SET/DEMO TECLA SET/DEMO	35128830		
BUTTON STRIP BASS/TREBLE BARRETTE DE TOUCHES 2T BASS/TREBLE TASTENLEISTE BASS/TREBLE ASSIEME TASTI 2T BASS/TREBLE CONJUNTO DE TECLAS 2T BASS/TREBLE	35128840		
BUTTON LEVEL TOUCHE LEVEL TASTE LEVEL TASTO LEVEL TECLA LEVEL	35128850		
VOLUME KNOB BOUTON VOLUME LAUTSTAERKEKNOPF ROTELLA DI PLASTICA VOLUME RUEDA PLASTICA MANDO	35128860		
UPPER CASE ASSY COFFRET SUPERIEUR GEHAEUSE OBEN CASSA SUPERIORE CAJA SUPERIOR	35128870		
ON/OFF BUTTON TOUCHE MARCHE/ARRET EIN-AUS TASTE TASTO ACCESO/SPENTO TECLA MARCHA/PARADA	35128880		
FOLDING BOX EMBALLAGE CARTON KARTON IMBALLAGGIO CARTONE EMBALAJE CARTON	35129050		
DPL550HT LOUDSPEAKER BOX ASSY X6 DPL550HT ENCEINTES ACOUSTIQUES X6 DPL550HT LAUTSPRECHERBOX K.P.L X6 DPL550HT CASSA ACUSTICA COMPLETO X6 DPL550HT CAJA ACUSTICA EQUIPADO X6	35129060		
CENTRAL LOUDSPEAKER BOX ENCEINTE ACOUSTIQUE CENTRALE CENTRAL LAUTSPRECHERBOX CASSA ACUSTICA PRINCIPALE CENTRALE CAJA ACUSTICA PRINCIPAL CENTRAL	35129070		
MAIN LOUDSPEAKER BOX RIGHT OR LEFT ENCEINTE ACOUS.PRINCIP. DROITE OU GAUCHE MAIN LAUTSPRECHERBOX RECHTS ODER LINKS CASSA ACUSTIC.PRINCIP. DESTRA O SINISTRA CAJA ACUSTIC.PRINCIP.DERECHA O IZQUIERDA	35129080		
SURROUND LOUDSPEAKER BOX RIGHT OR LEFT ENCEINTE ACOUSTIQUE SURROUND D OU GAUCHE SURROUND LAUTSPRECHERBOX RECH. OD. LINKS CASSA ACUSTICA SURROUND DESTRA O SINIST. CAJA ACUSTICA SURROUND DERECH. O IZQUIED.	35129090		
BUTTON STRIP FUNCTIONS DVD/VCR/CD/TV BARRETTE TOUCHES 8T FONCTIONS DVD/VCR/CD TASTENLEISTE FUNKTIONEN DVD/VCR/CD/TV PIATTINA TASTI 8T FUNZIONI DVD/VCR/CD/TV PLACA DE TECLAS 8T FUNCIONES DVD/VCR/CD	35128790		
		DPL550HT UM TH DPL550HT NU TH DPL550HT BA TH DPL550HT IU TH DPL550HT IU TH	55079380
		DPL550HT PARTS LIST DPL550HT LISTE DE PIECES DETACHEES DPL550HT ERSATZTEILLISTE DPL550HT PARTI DI RICAMBIO DPL550HT LISTA DE PIEZAS DE REPUESTO	35129370
		PAV5005/5005R TH SERVICE MANUAL PAV5005/5005R TH DOCUMENTATION TECHNIQUE PAV5005/5005R TH TECHNISCHE DOKUMENTATION PAV5005/5005R TH DOCUMENTAZIONE TECNICA PAV5005/5005R TH DOCUMENTACION TECNICA	35129320

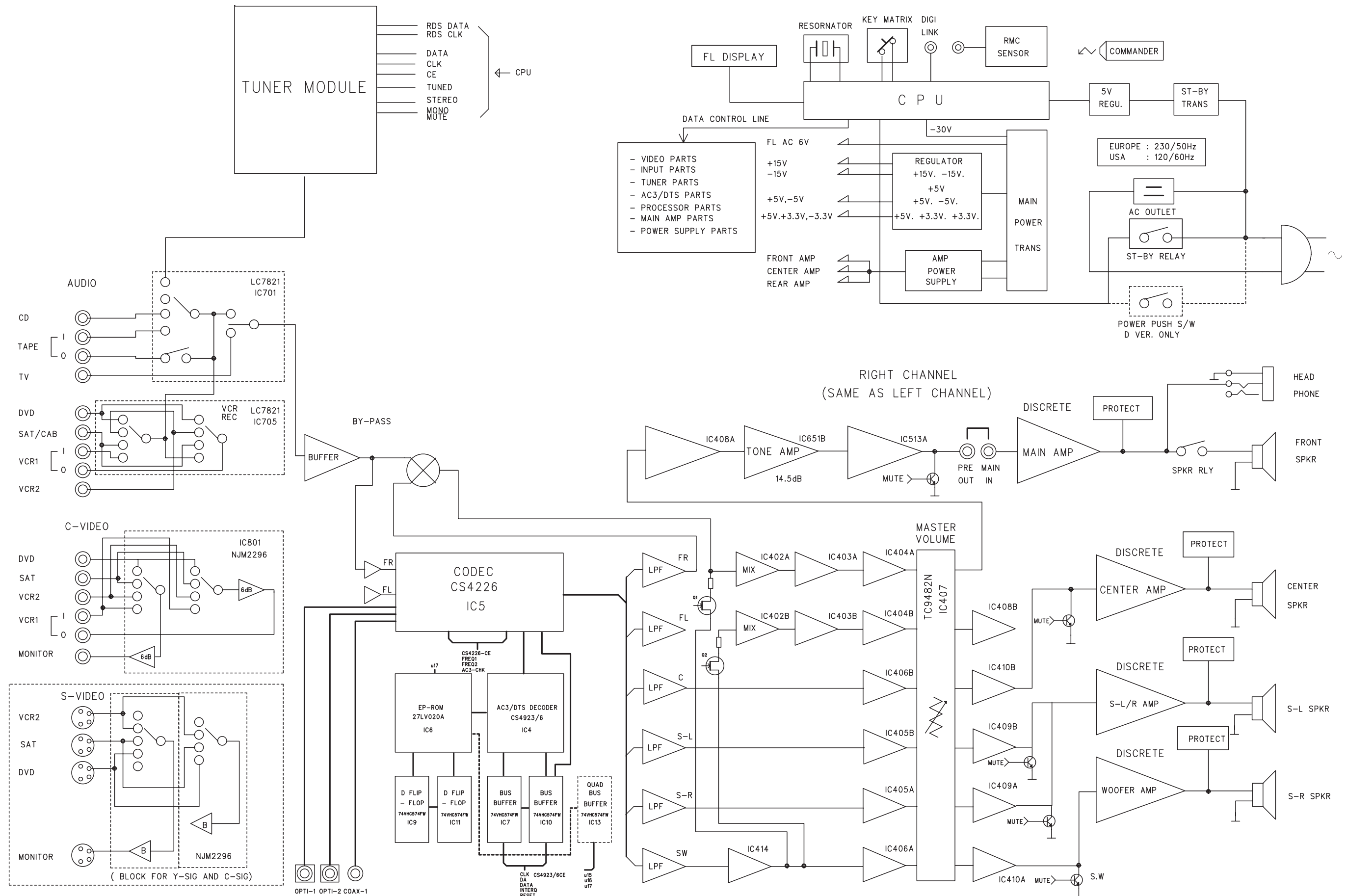
DPL550HT

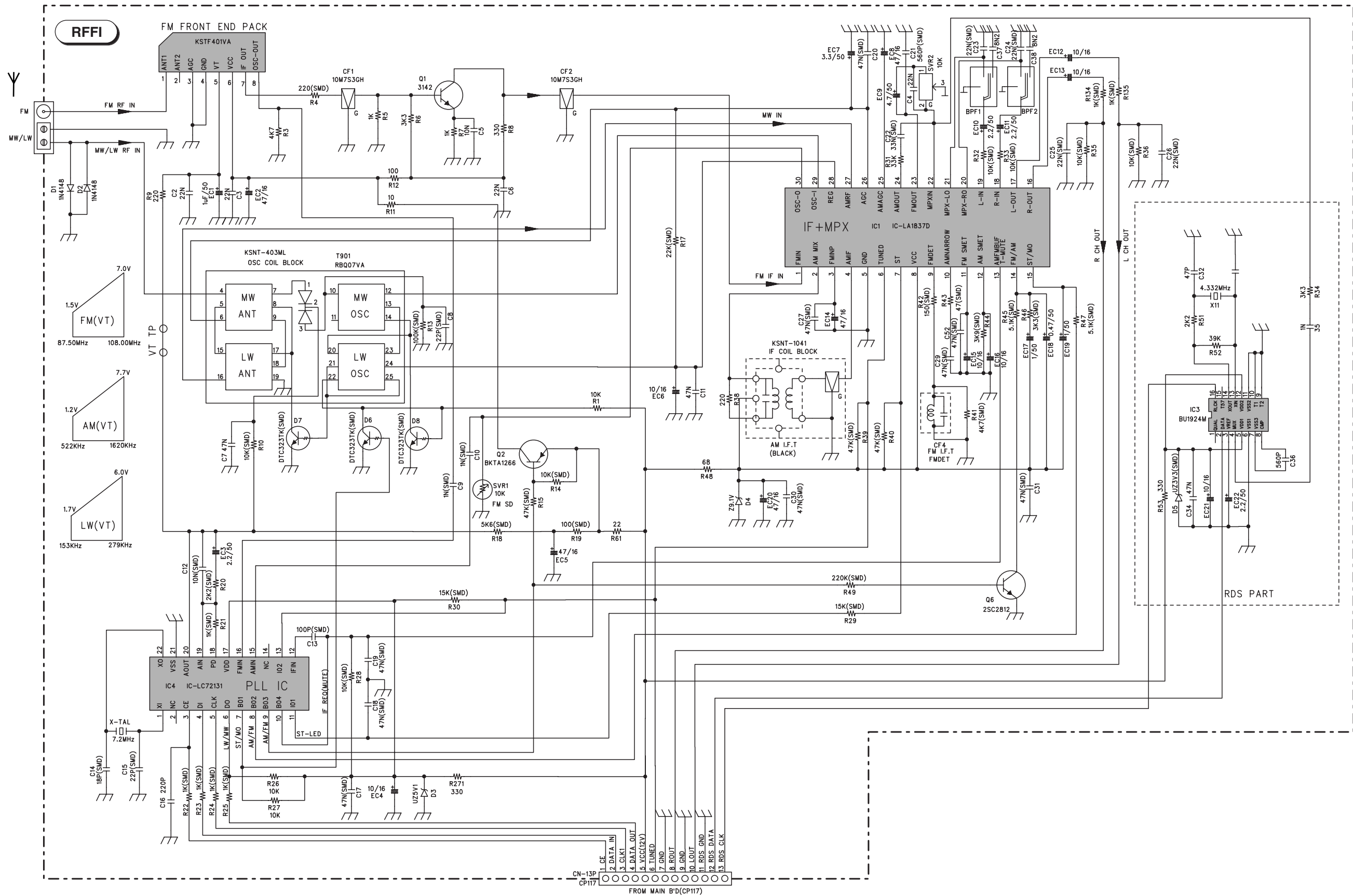
3/3

The description and characteristics given here are of informative significance only, and non committal. To keep up the high quality of our products, we reserve the right to make any changes or improvement without previous notice. • Les descriptions et caractéristiques figurant sur ce document sont données à titre d'information et non d'engagement. En effet, soucieux de la qualité de nos produits, nous nous réservons le droit d'effectuer, sans préavis, toute modification ou amélioration. • Die Beschreibungen und Daten in dieser Anleitung dienen nur zur Information und sind nicht bindend. Um die Qualität unserer Produkte ständig zu verbessern, behalten wir uns das Recht auf Änderungen vor. • Le descrizioni e le caratteristiche date su questo documento sono fornite a semplice titolo informativo e senza impegno. Ci riserviamo il diritto di eseguire, senza preavviso, qualsiasi modifica o miglioramento. • Las descripciones y características que figuran en este documento se dan a título de información y no de compromiso. En efecto, en bien de la calidad de nuestros productos, nos reservamos el derecho de efectuar, sin previo aviso, cualquier modificación o mejora.

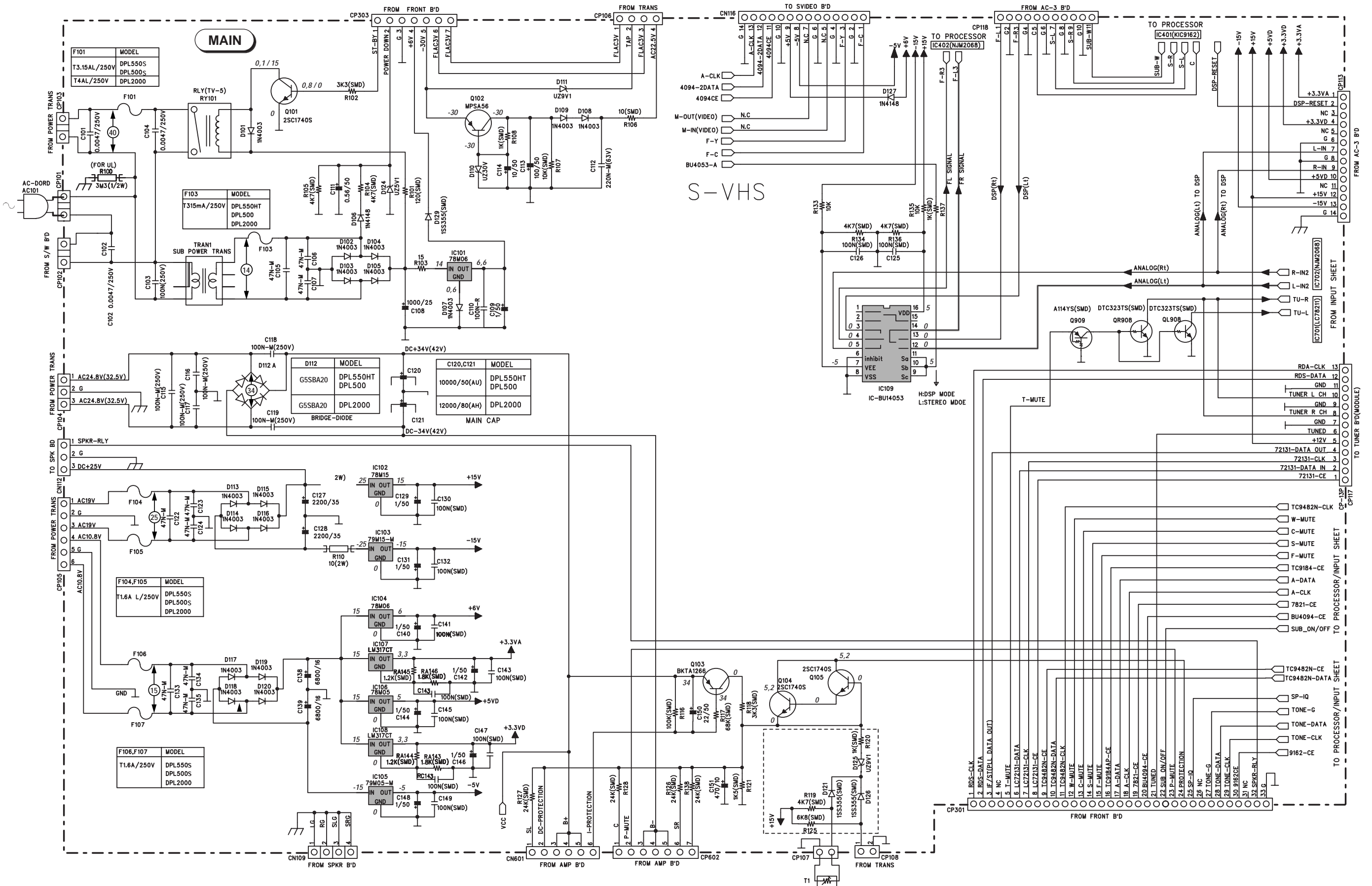
WIRING DIAGRAM - SCHEMA D'INTERCONNESSIONS - VERDRÄHTUNGSPLAN - DIAGRAMMA DELLE INTERCONNESSIONI - ESQUEMA DE INTERCONEXIONES



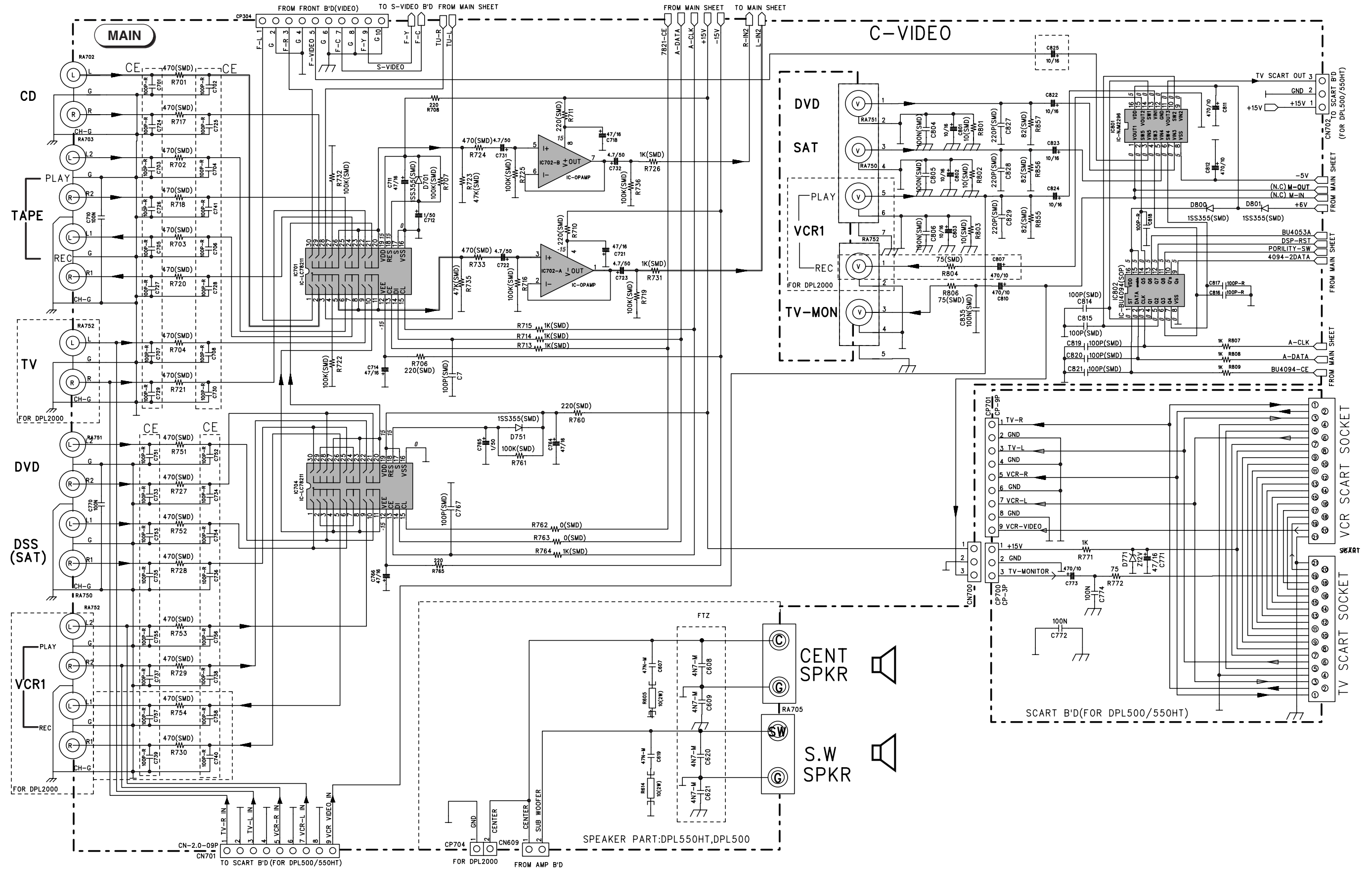




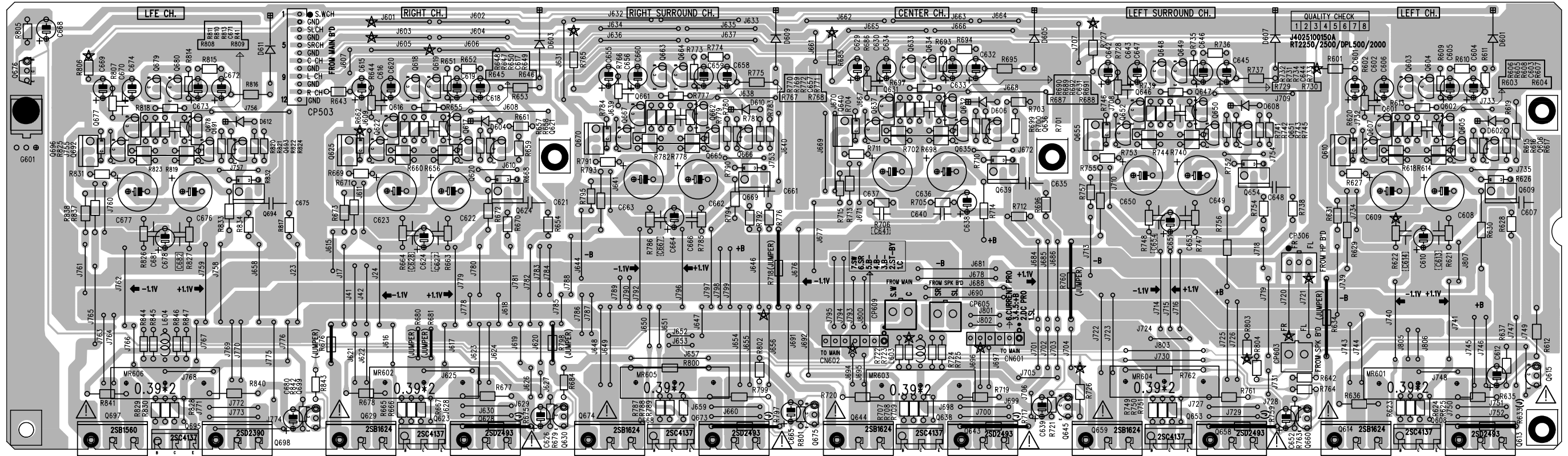
MAIN SCHEMATIC DIAGRAM - SCHEMA DE LA PLATINE PRINCIPALE - GRUNDPLATTE SCHALTBIKD - SCHEMA DELLA PIASTRA PRINCIPALE- ESQUEMA DE LA PLATINA PRINCIPAL (POWER SUPPLY PART)



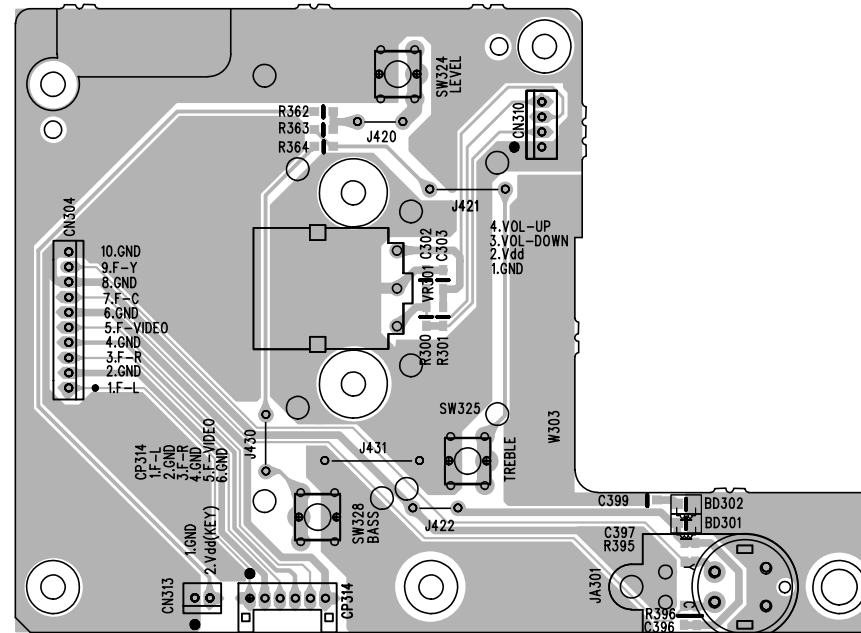
MAIN SCHEMATIC DIAGRAM - SCHEMA DE LA PLATINE PRINCIPALE - GRUNDPLATTE SCHALTBILD - SCHEMA DELLA PIASTRA PRINCIPALE- ESQUEMA DE LA PLATINA PRINCIPAL (INPUT/OUTPUT PART)



Amplifier P.C.B.
 Platine amplificator
 Ltpl. Endverstärker
 Piastra amplificatore
 Platina amplificador



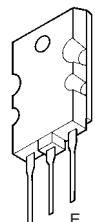
Volume P.C.B.
 Platine volume
 Ltpl. Lautstärke
 Piastra volume
 Platina volumen



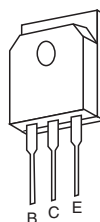
KTA1268
 KTA1266
 KTC3200



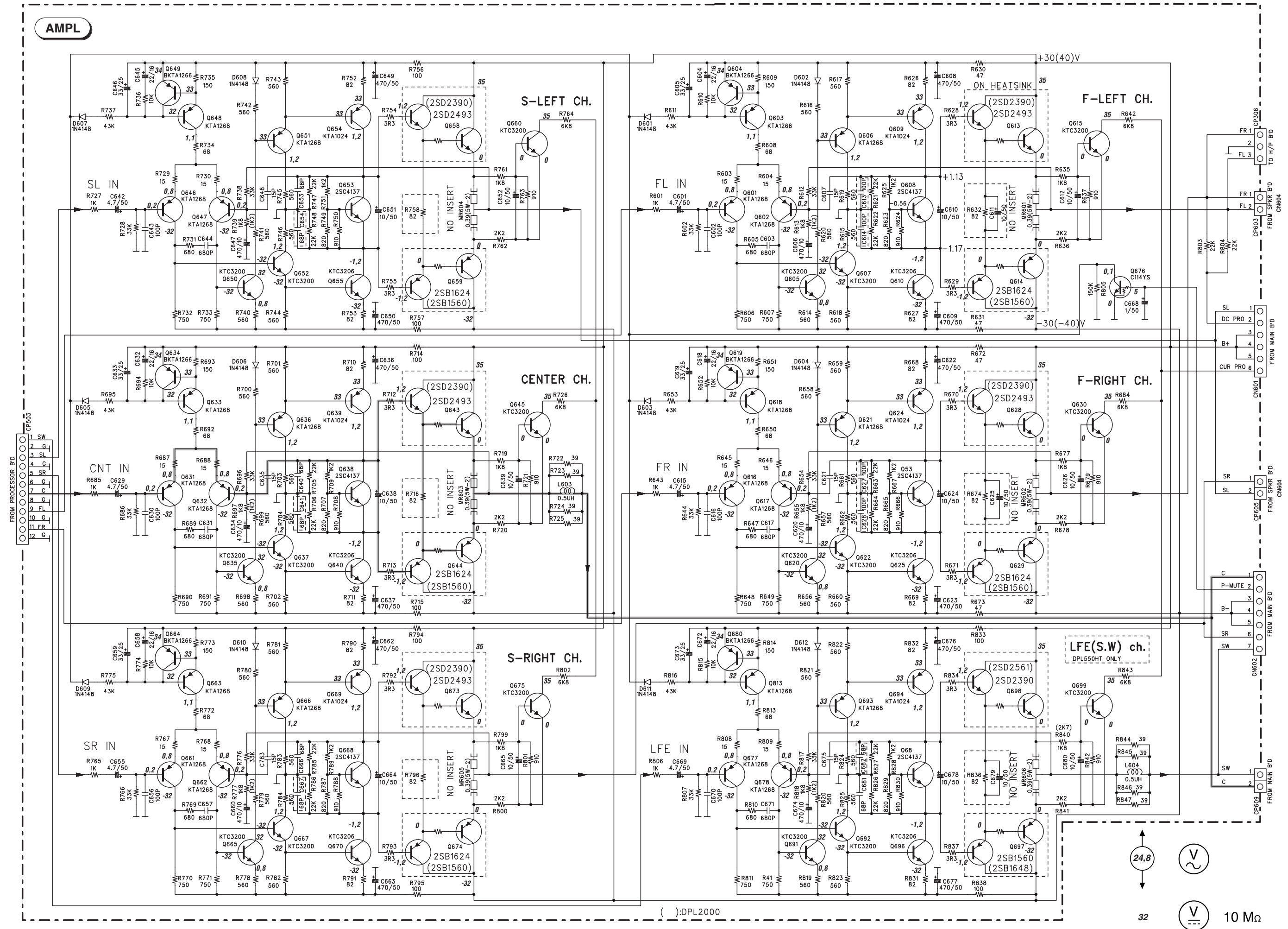
KTC3206
 KTA1024
 C114YS



2SC4137

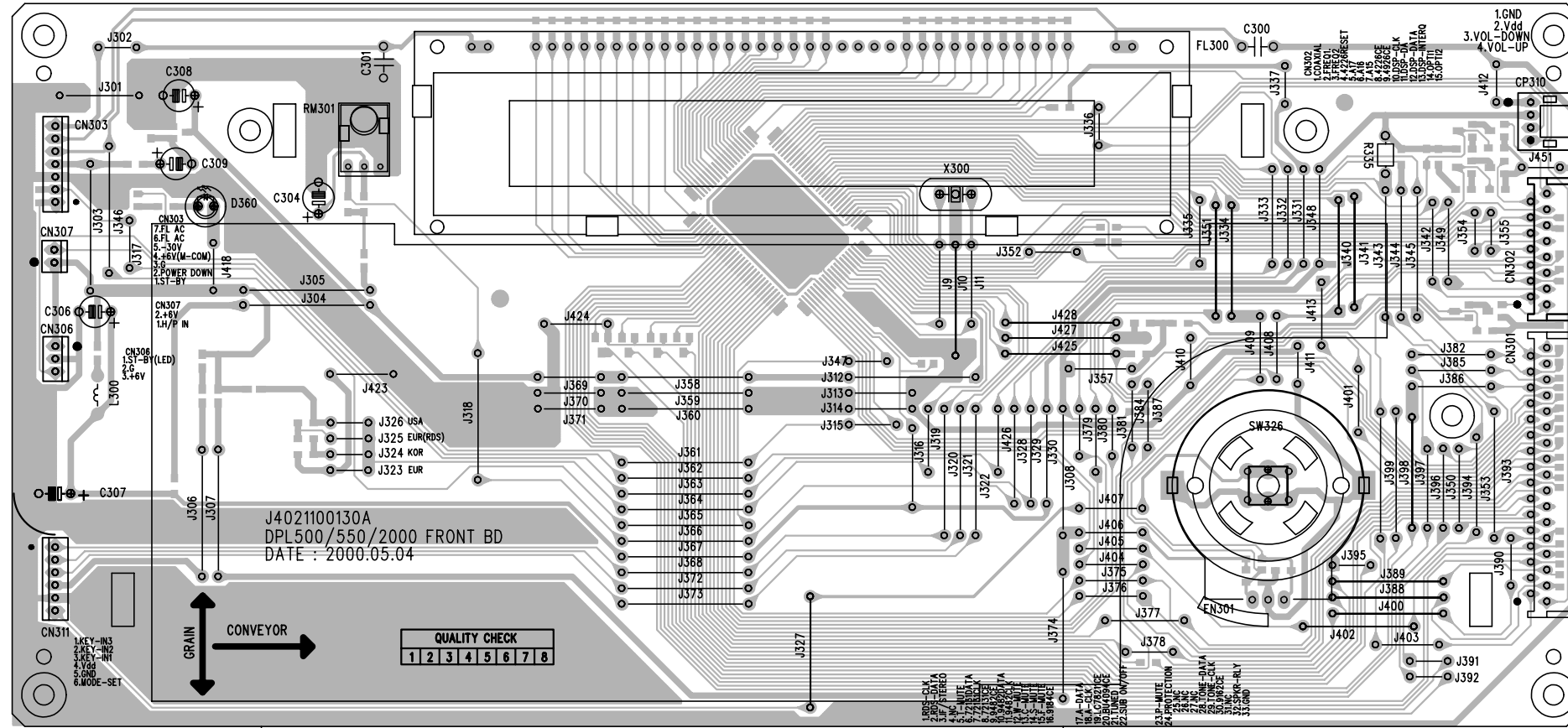


2SD2493
 2SB1624

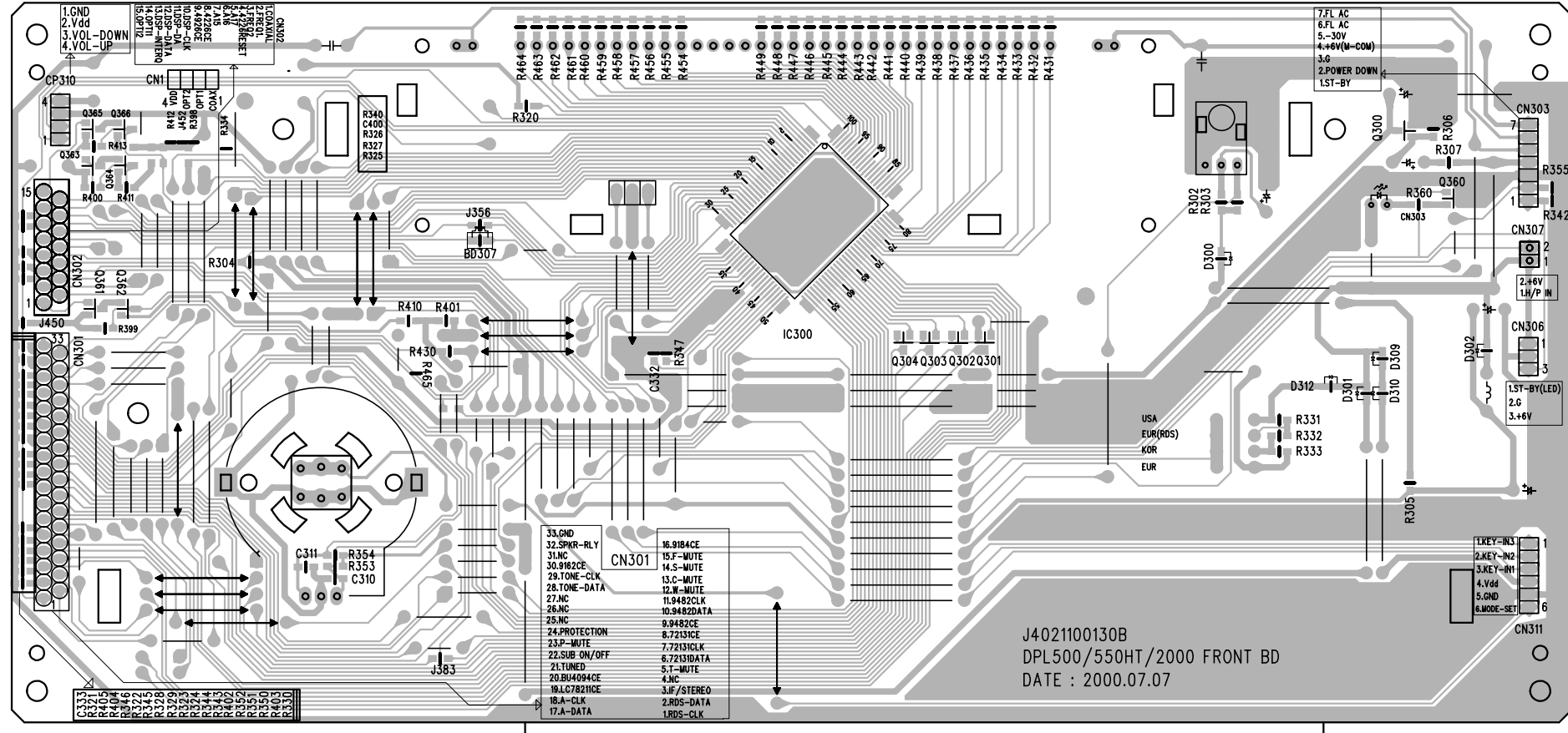


Controls / display P.C.B.
Platine commandes / afficheurs
Ltpl. Bedienteil / Anzeige
Piastra comandi / indicatore
Platina de mandos / indicadores

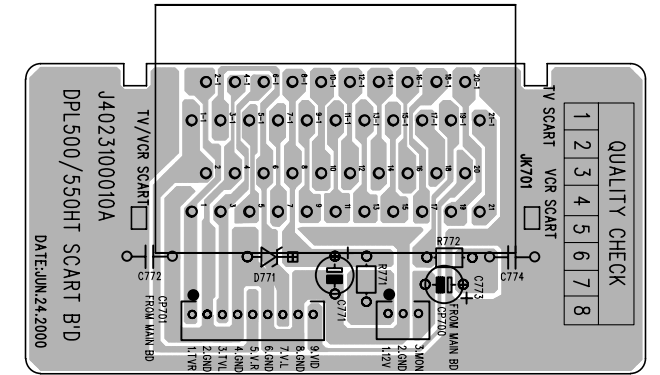
Component side
Côté composants
Bestückungsseite
Lato componenti
Lado componentes



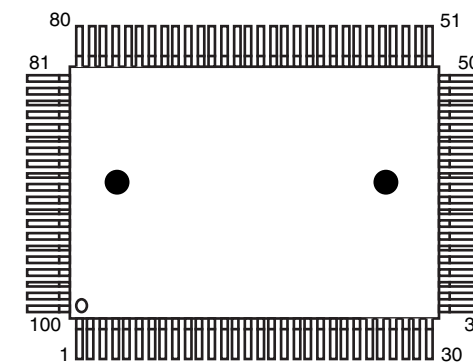
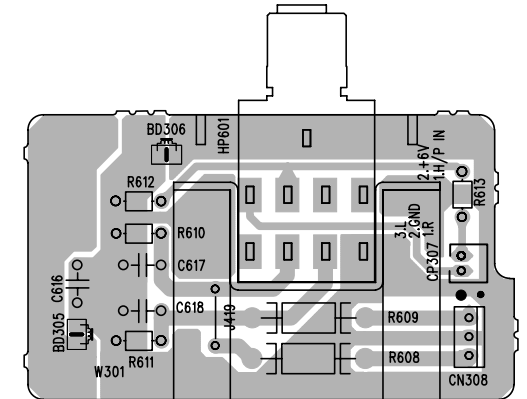
Solder side
Côté soudure
Lötseite
Lato saldature
Lado del cobre



Scart interface P.C.B.
Platine interface péritélévision
Ltpl. Europa Normbuchse
Piastra presa peritel
Platina eurotoma

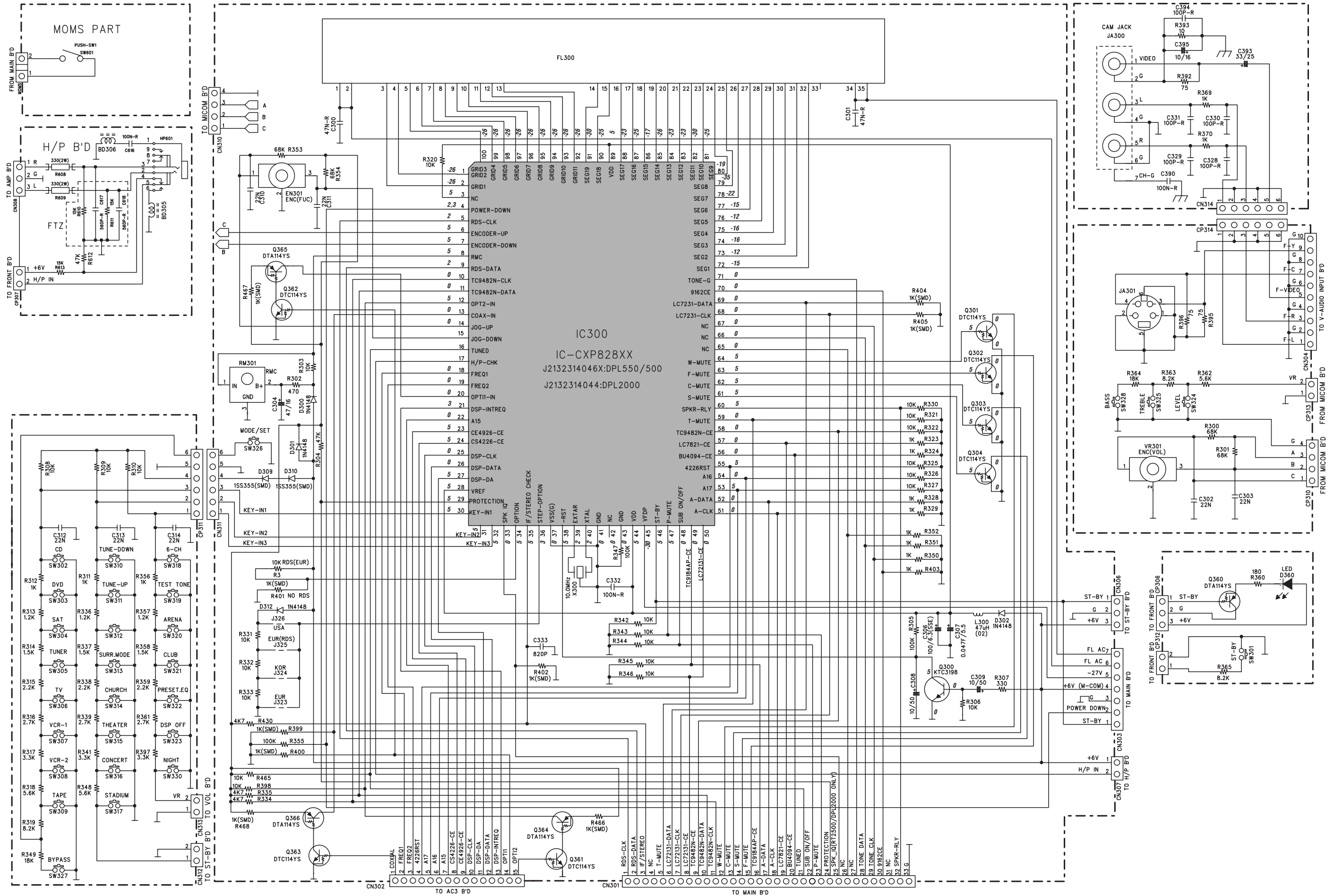


Headphone-jack P.C.B.
Platine prise-casque
Ltpl. Kopfhörerbuchse
Piastra presa per cuffia
Platina toma auriculares

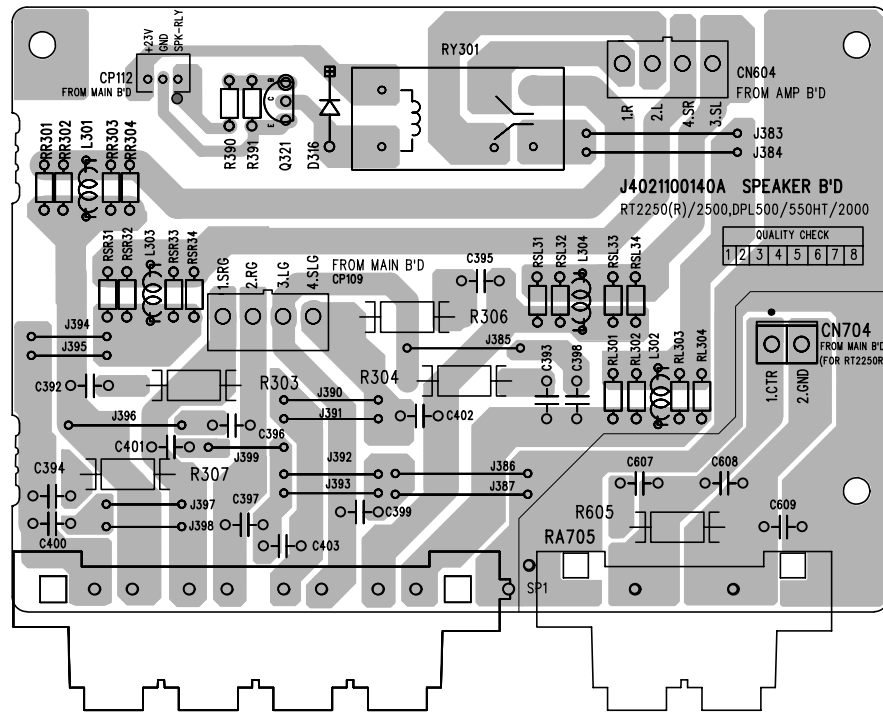


CXP828XX

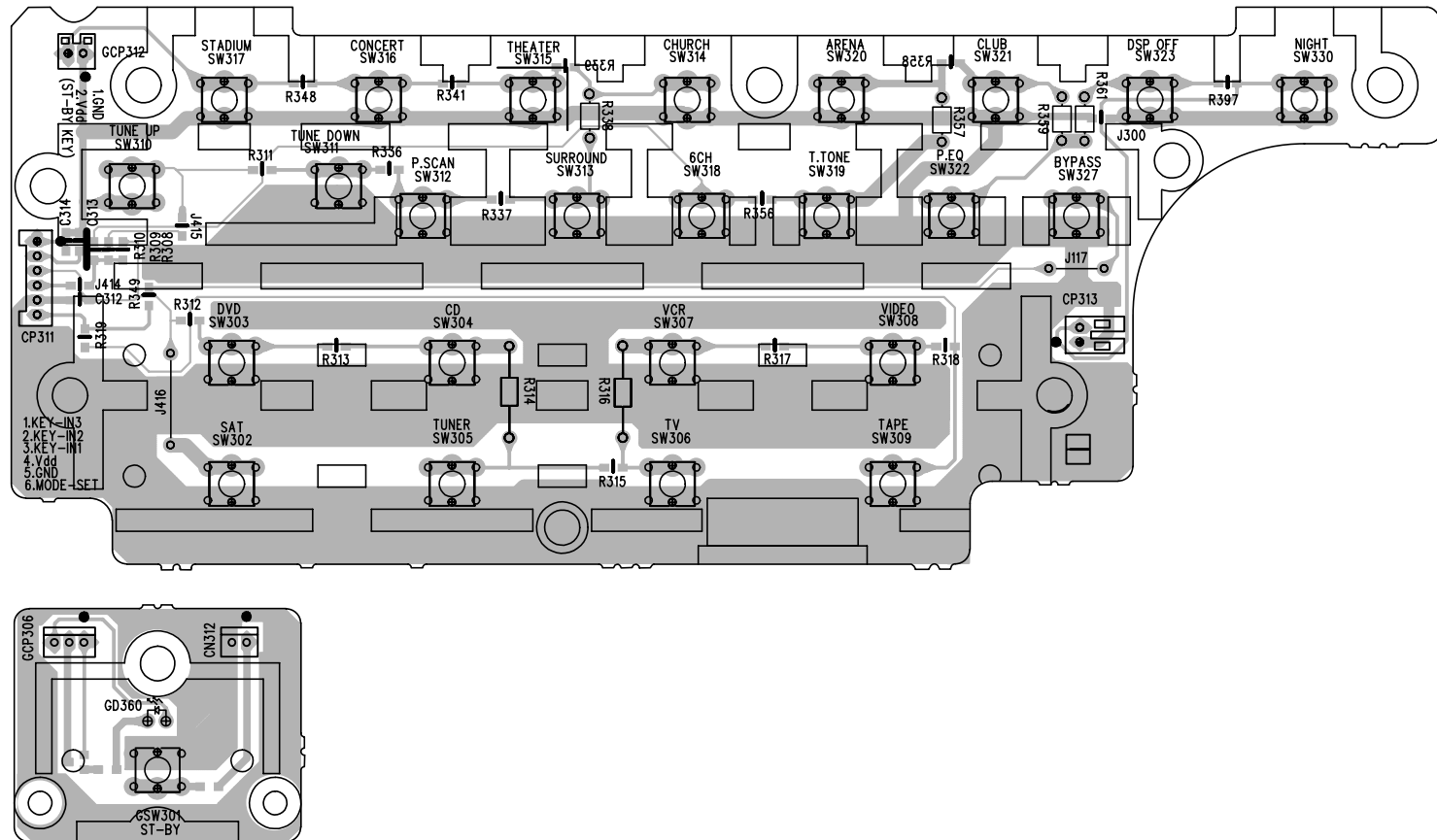
CONTROL / DISPLAY SCHEMATIC DIAGRAM - SCHEMA COMMANDES / AFFICHEUR - BEDIENTEIL / ANZEIGE SCHALTBILD - SCHEMA COMANDI / INDICATORE - ESQUEMA MANDOS / INDICADOR



Speaker P.C.B.
Platine haut-parleurs
Lautsprecher P.C.B.
Piastra altoparlanti
Platina altavoces

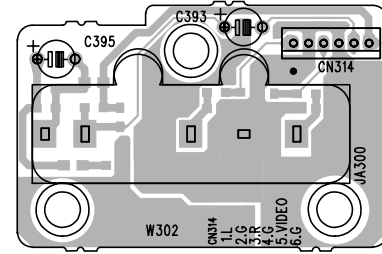


Controls P.C.B.
Platine commandes
Ltpl. Bedienteil
Piastra comandi
Platina de mandos

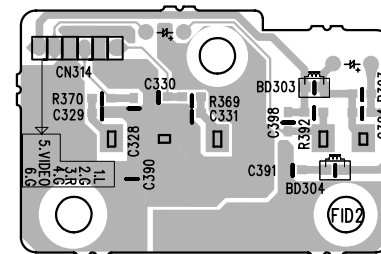


Video input/output P.C.B.
Platine des entrées/sorties vidéo
Ltpl. video eingängen/ausgang
Piastra ingressi/uscità video
Platina entradas/salida vídeo (DINS)

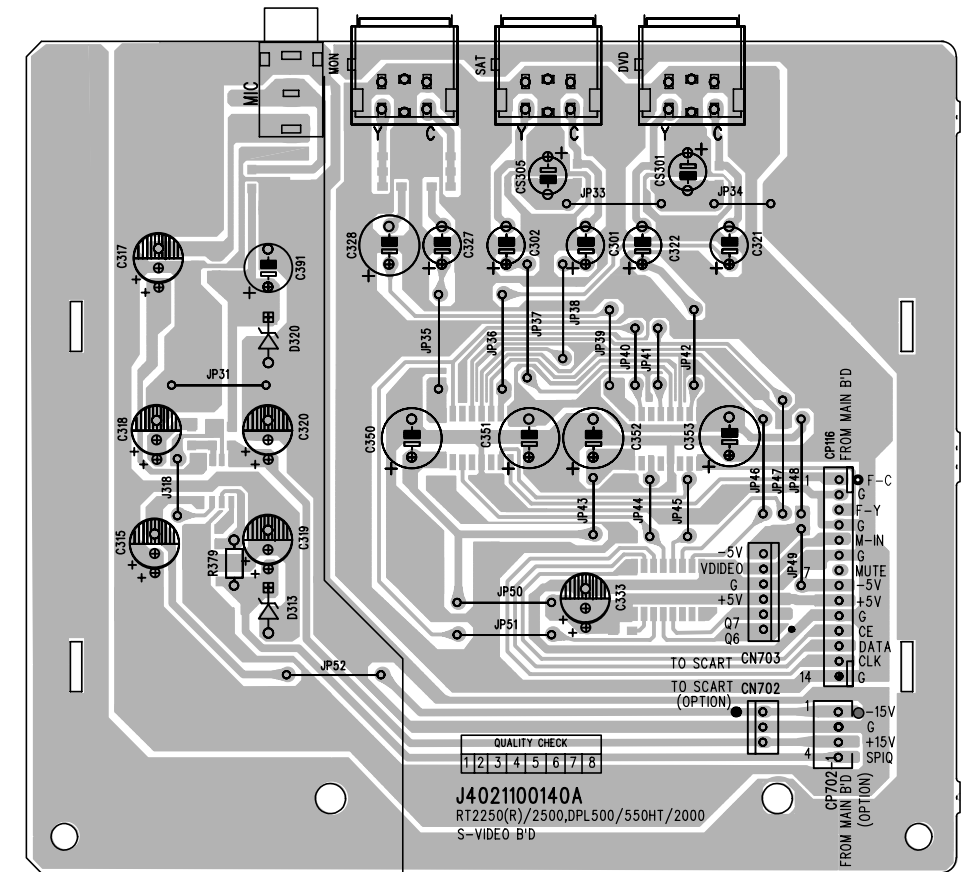
Component side
 Côté composants
 Bestückungsseite
 Lato componenti
 Lado componentes



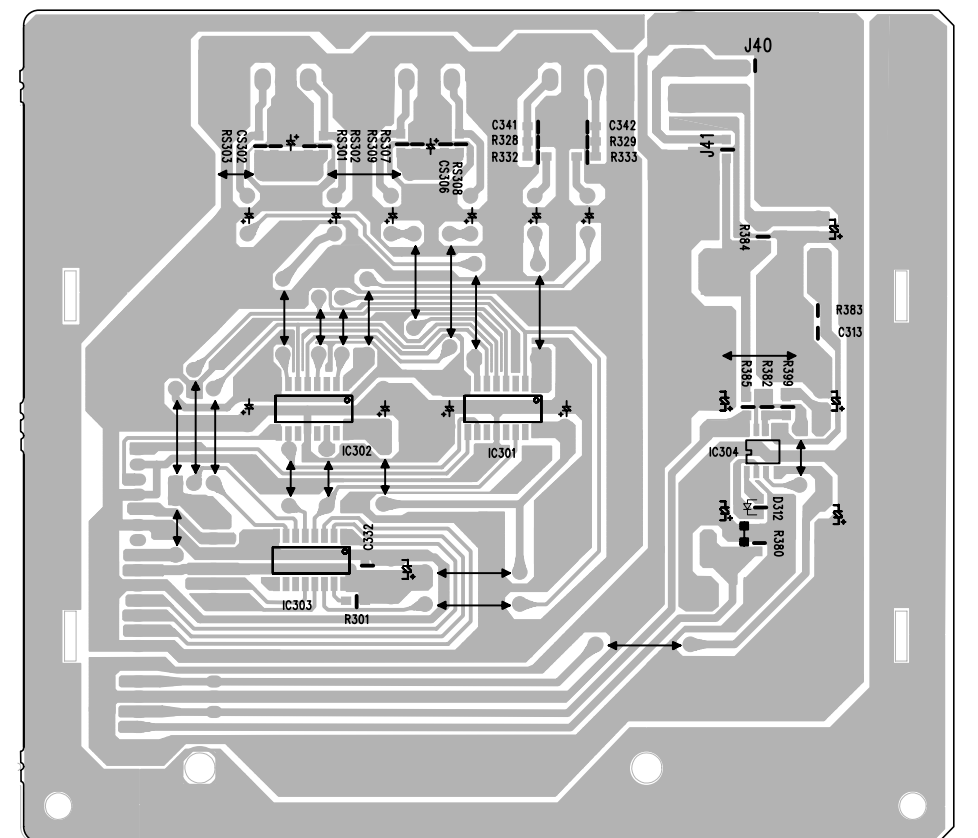
Solder side
 Côté soudure
 Lötseite
 Lato saldature
 Lado del cobre

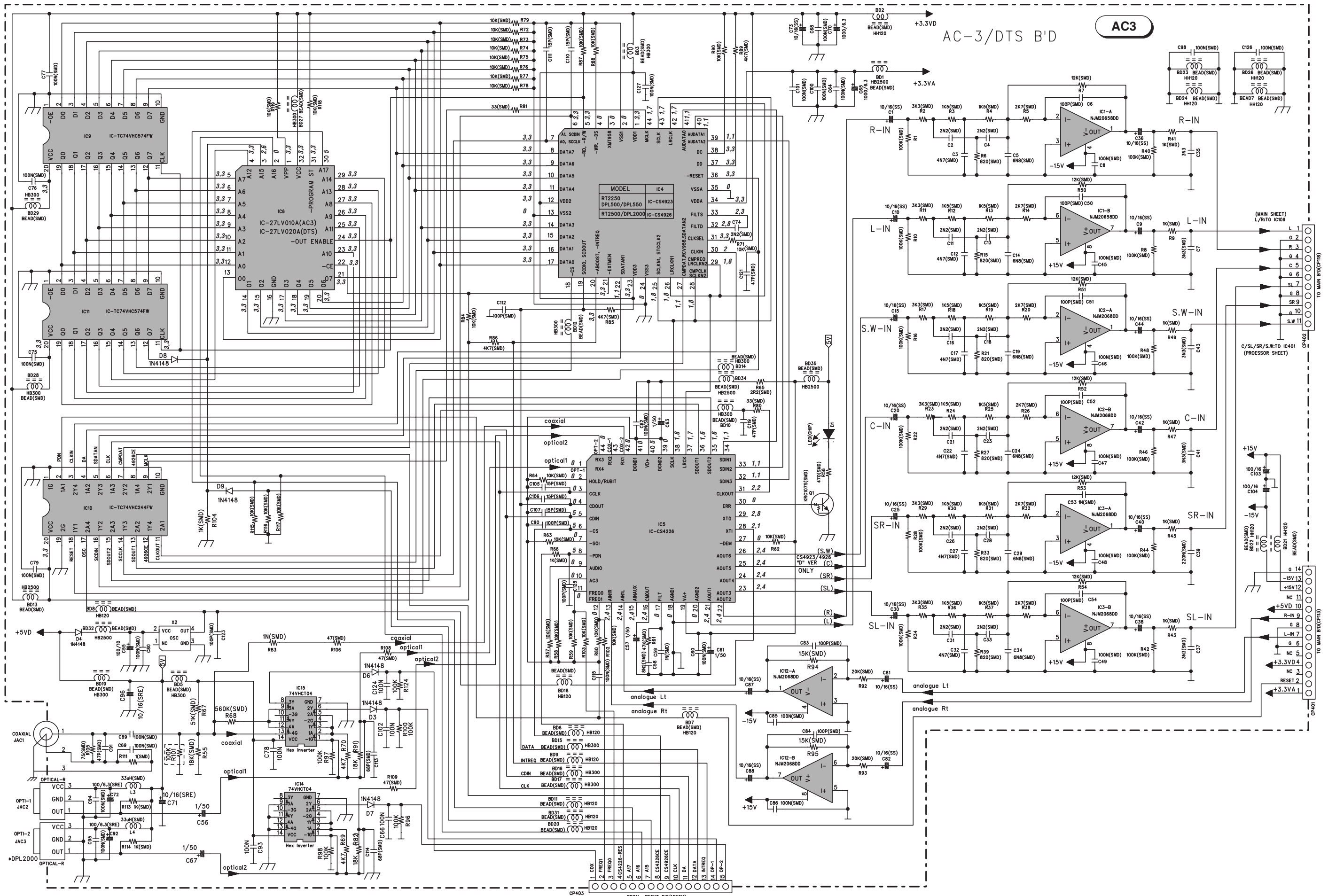


Component side
 Côté composants
 Bestückungsseite
 Lato componenti
 Lado componentes



Solder side
 Côté soudure
 Lötseite
 Lato saldature
 Lado del cobre





Digital processing P.C.B.
Platine traitement digital
Ltpl. Digitalverarbeitung
Piastra elaborazione digitale
Platina tratamiento digital

Component side
 Côté composants
 Bestückungsseite
 Lato componenti
 Lado componentes

