

Manual de Serviço

HI-FI MINI COMPONENT SYSTEM

MS-8258 CD *5101*



ESPECIFICAÇÕES TÉCNICAS

SEÇÕES DO RÁDIO

• Seção MW (AM)

Faixa de Freqüência 520 ~ 1610 kHz
 Sensibilidade Prática 55 dB μ V
 Relação Sinal/Ruído \geq 40 dB
 Distorção Harmônica Total \leq 2%

• Seção FM

Faixa de Freqüência 87,5 ~ 108 MHz
 Sensibilidade Prática \leq 22 μ V
 Relação Sinal/ Ruído \geq 62 dB
 Distorção Harmônica Total \leq 0,45%
 Separação Estéreo \geq 35 dB

SEÇÃO TAPE DECK

Resposta em Freqüência 125 Hz ~ 12,5 kHz (\pm 7dB)
 Relação Sinal/Ruído \geq 40 dB
 Distorção Harmônica Total \leq 2,5%
 Relação de Apagamento \geq 60 dB

SEÇÃO CD

Resposta em Freqüência 20 Hz ~ 20 kHz (\pm 1 dB)
 Relação Sinal/Ruído \geq 65 dB (1 kHz 0 dB)
 Distorção Harmônica Total 0,2% (1 kHz 0 dB)

SEÇÃO ÁUDIO

Potência de Saída (6 Ω) 65 W RMS X2 (THD 10%)
 Resposta em Freqüência 20 Hz ~ 25 kHz (\pm 3 dB)
 Relação Sinal /Ruído \geq 75 dB
 Separação entre canais \geq 60 dB

ENTRADAS / SAÍDAS

Auxiliar (Sensibilidade / Impedância) .. 400 mV / 47 K Ω
 Headphones (Nível de Saída / Impedância) 2V /32 Ω

CAIXAS ACÚSTICAS

Potência Máxima 65 W
 Impedância 6 Ω

SEÇÃO GERAL

Alimentação 110 ~ 127/220 VAC, 60 Hz
 Consumo Máximo 247W
 Dimensões Aparelho (LxAxP) 270 x 317 x 333 mm
 Dimensões C. Acústicas (LxAxP) 210 x 315 x 280 mm
 Peso Líquido Aparelho 9,6 Kg
 Peso Líquido Caixas Acústicas 4,3 kg (x2)

As especificações acima estão sujeitas à alterações sem prévia notificação.

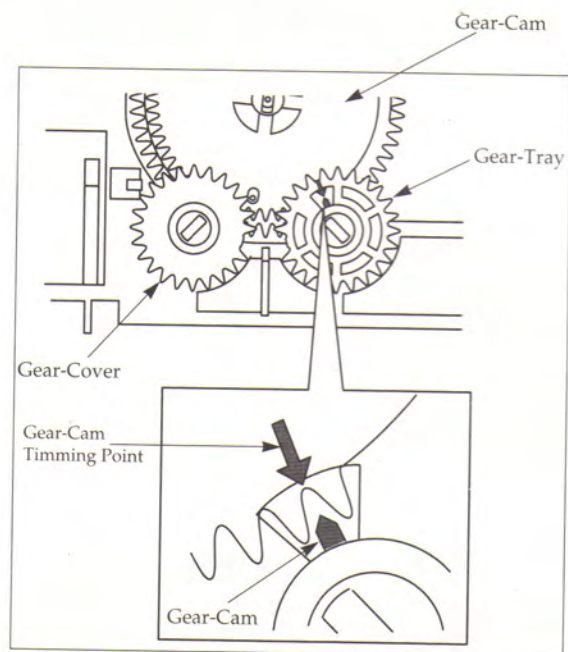
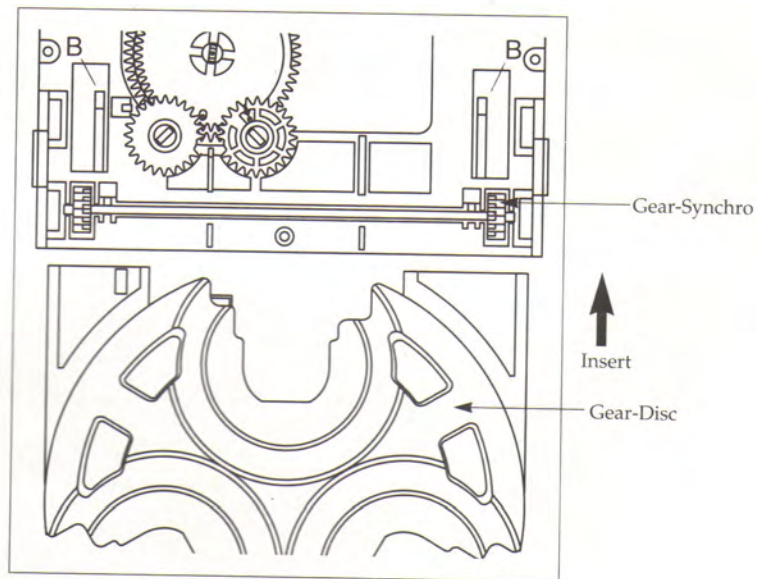
TOSHIBA

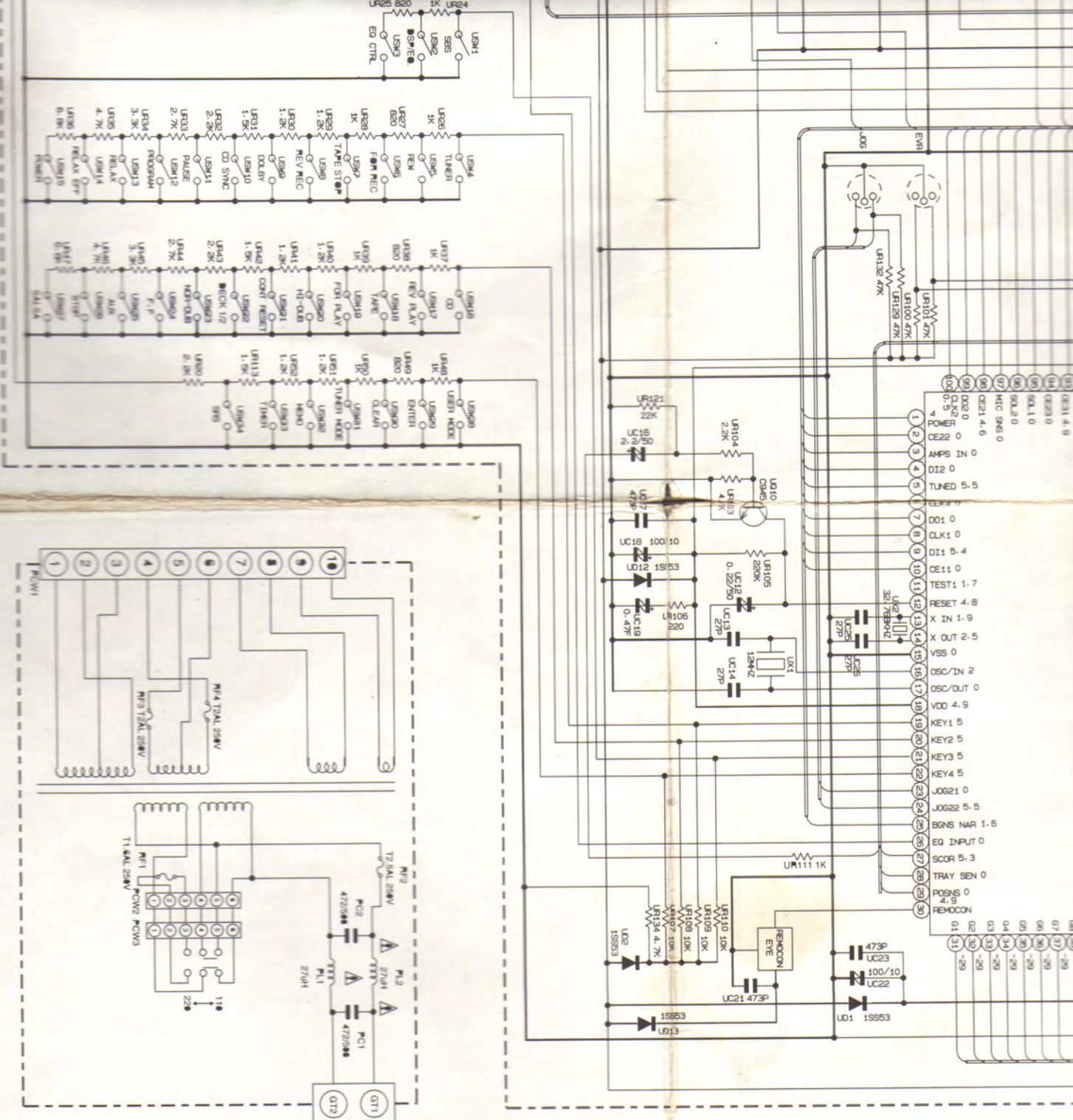
3. INSTRUÇÕES DE DESMONTAGEM

3.5. MECANISMO CD

- Para liberar a gaveta do CD, com a gaveta aberta, desconectar o flat cable, pressionar as duas travas B e puxar a gaveta para fora.
- Para montar, deve-se alinhar as engrenagens de acordo com a figura abaixo.

FLET DO PRATO QUEBRADO
NÃO LEVANTA LENTE

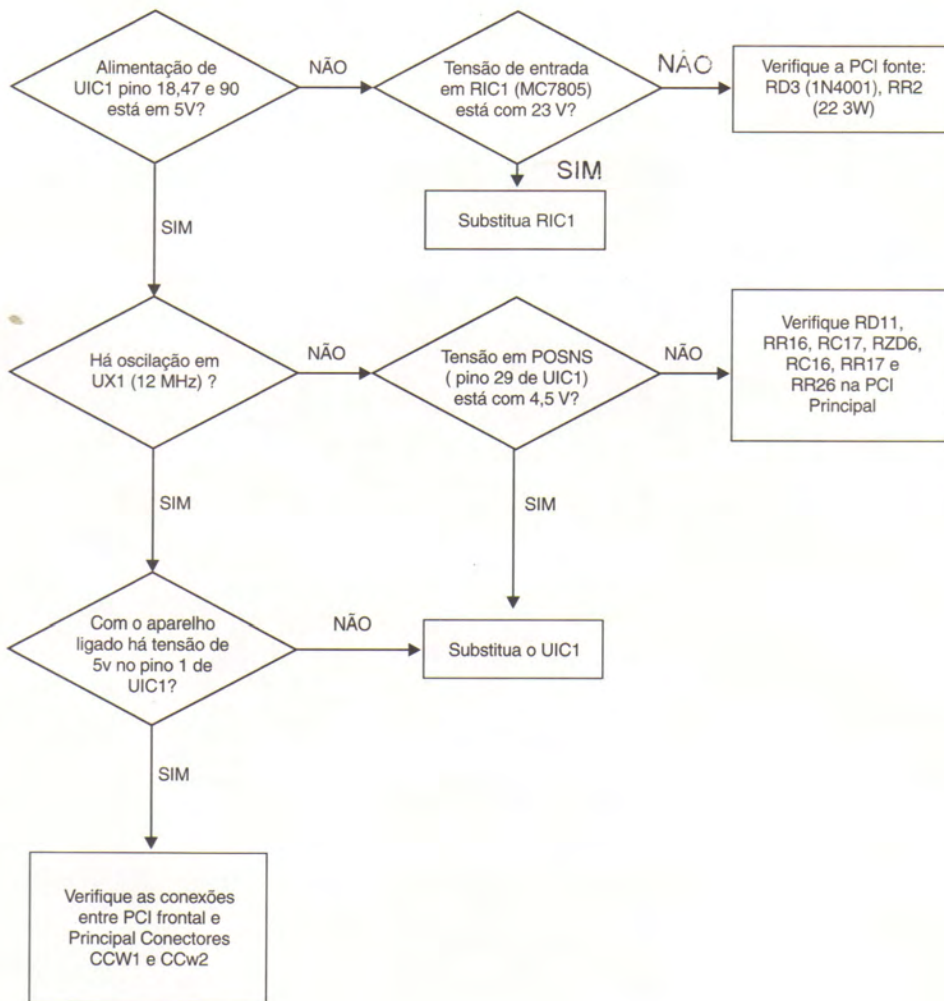




5. FLUXOGRAMA PARA REPARAÇÃO DE DEFEITOS

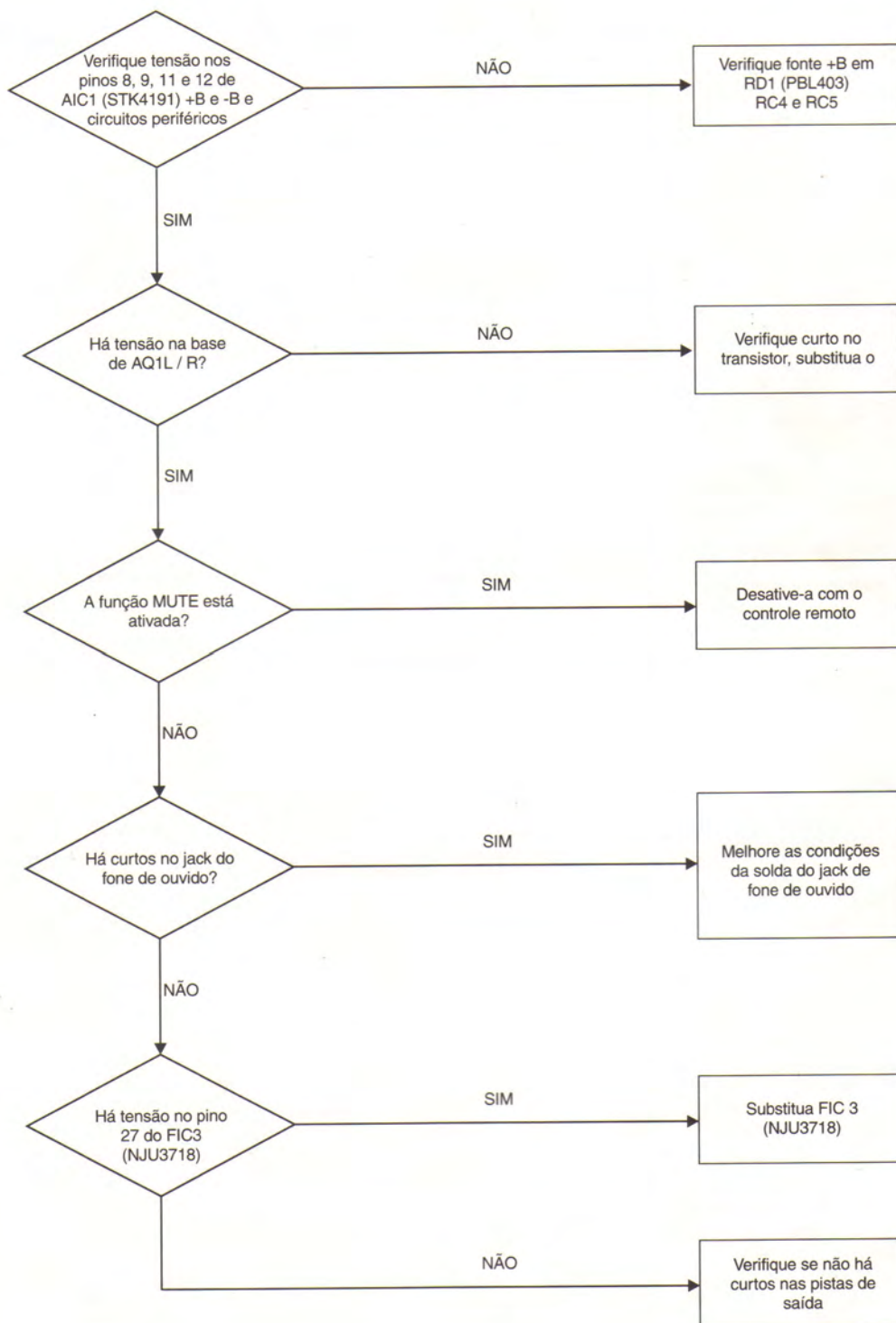
5.1 Amplificador

5.1.1. Defeito na potência



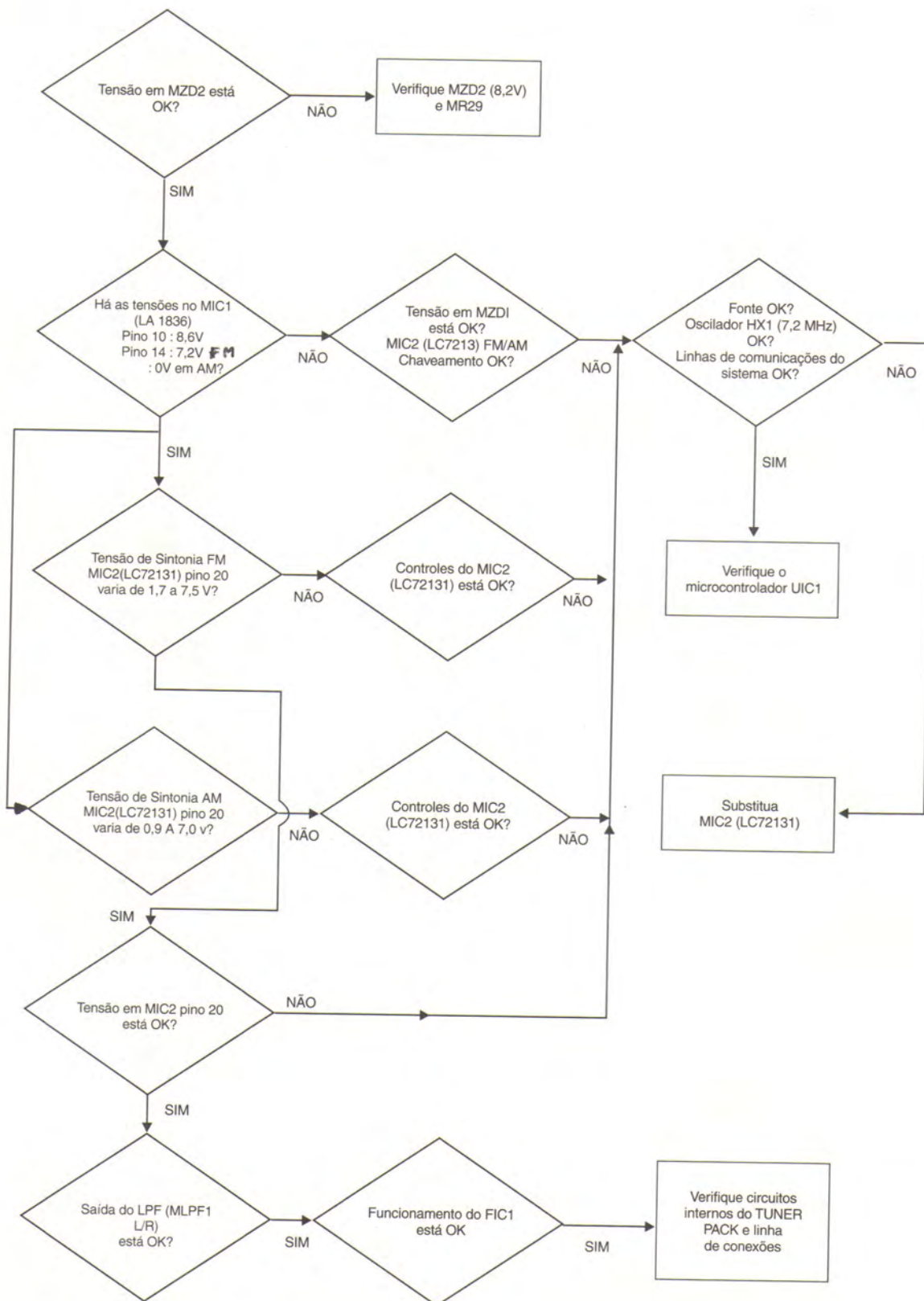
5. FLUXOGRAMA PARA REPARAÇÃO DE DEFEITOS

5.1.2. Sem sinal de saída



5. FLUXOGRAMA PARA REPARAÇÃO DE DEFEITOS

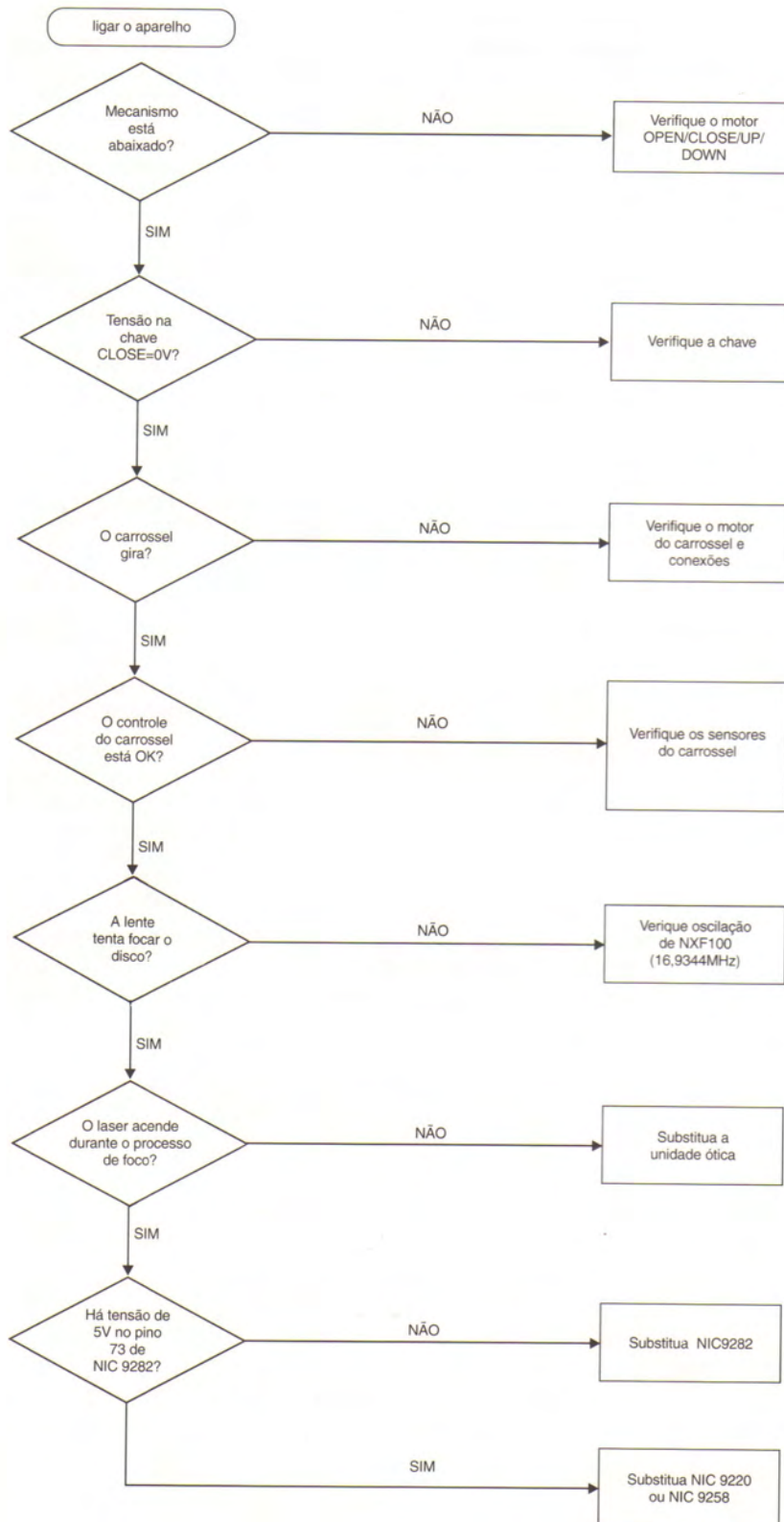
5.1.3. Defeito no Rádio



5. REPARAÇÃO DE DEFEITOS

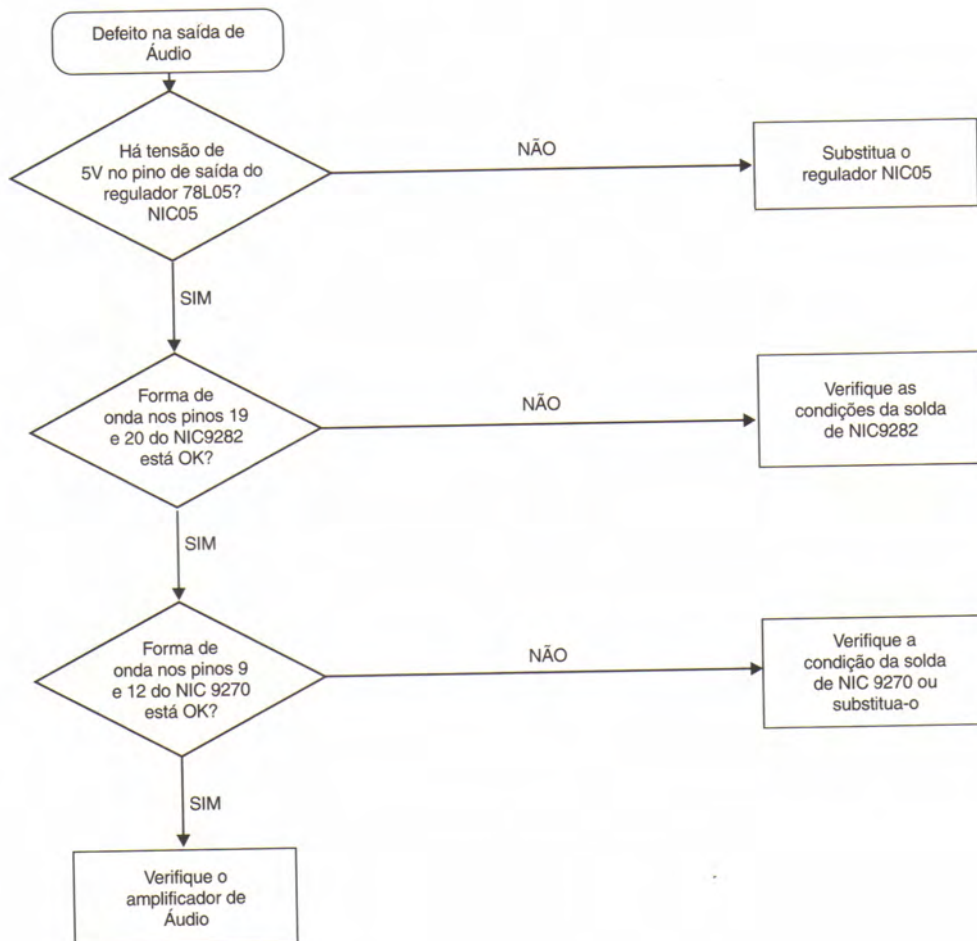
5.3. CD

5.3.1. Defeito na rotação do disco



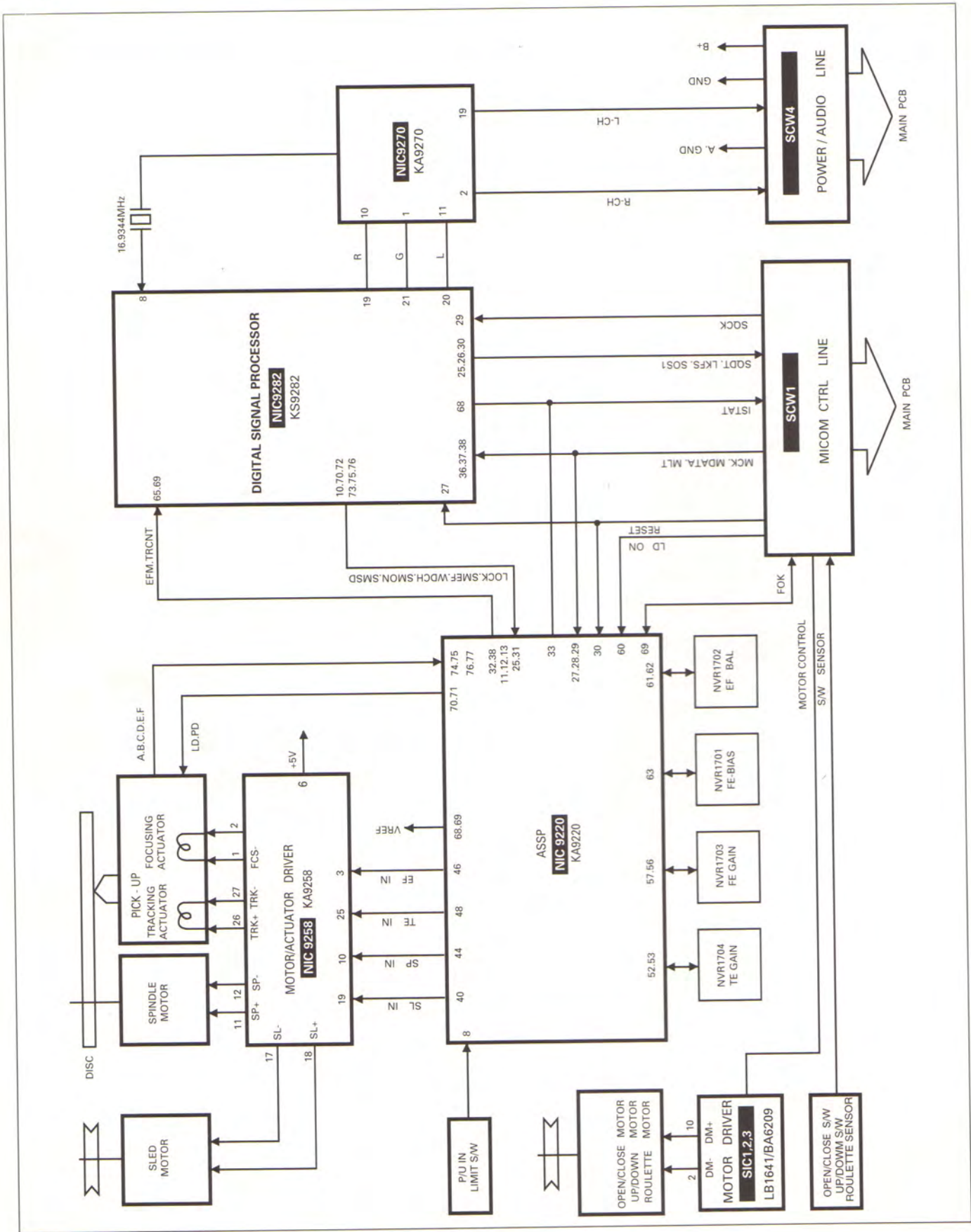
5. REPARAÇÃO DE DEFEITOS

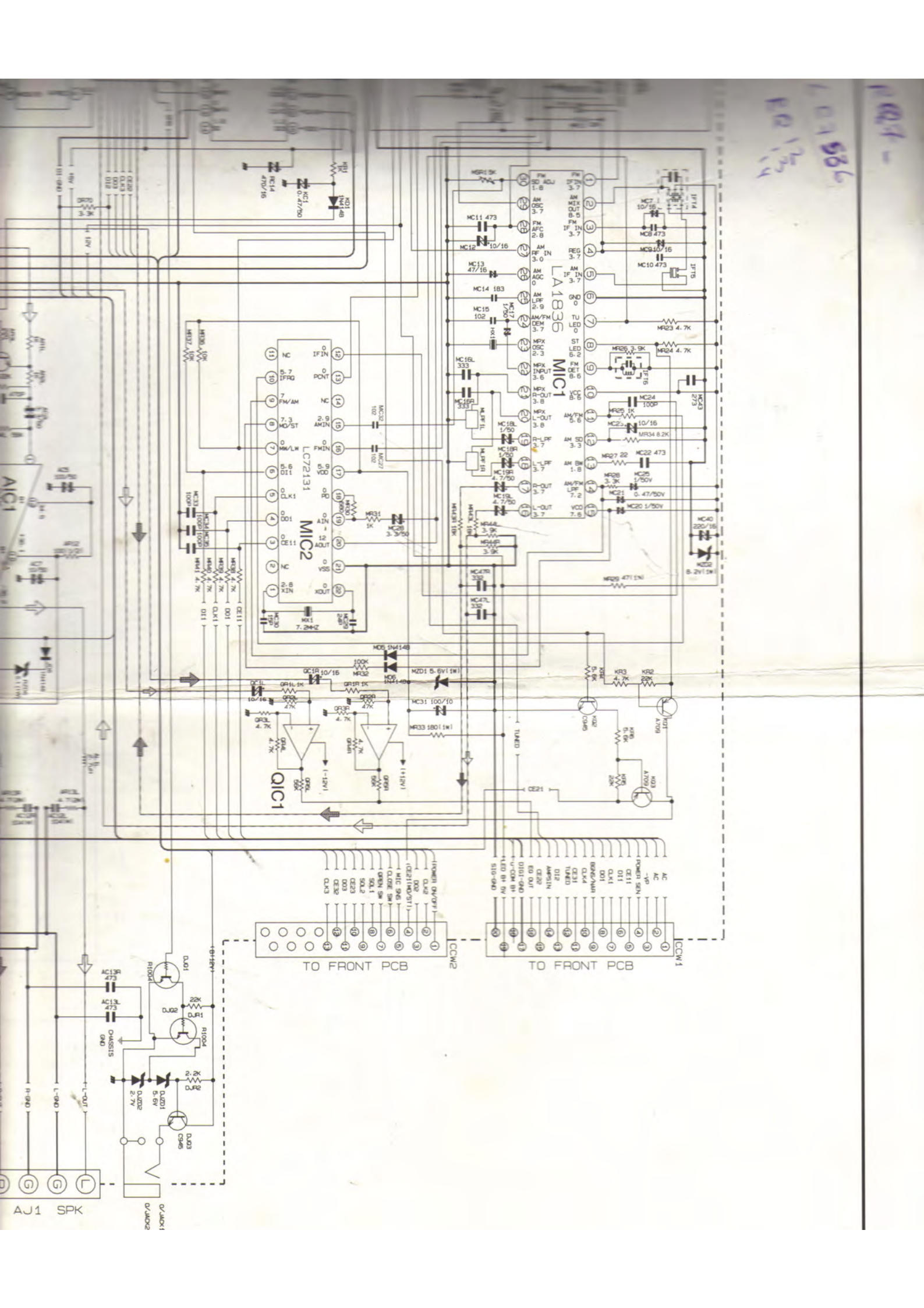
5.3.2. Defeito no sinal de áudio



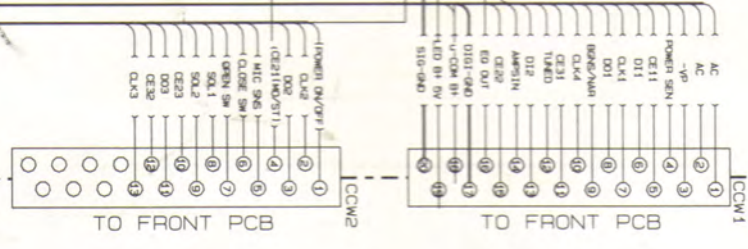
6. DIAGRAMA DE BLOCOS

6.1 CD

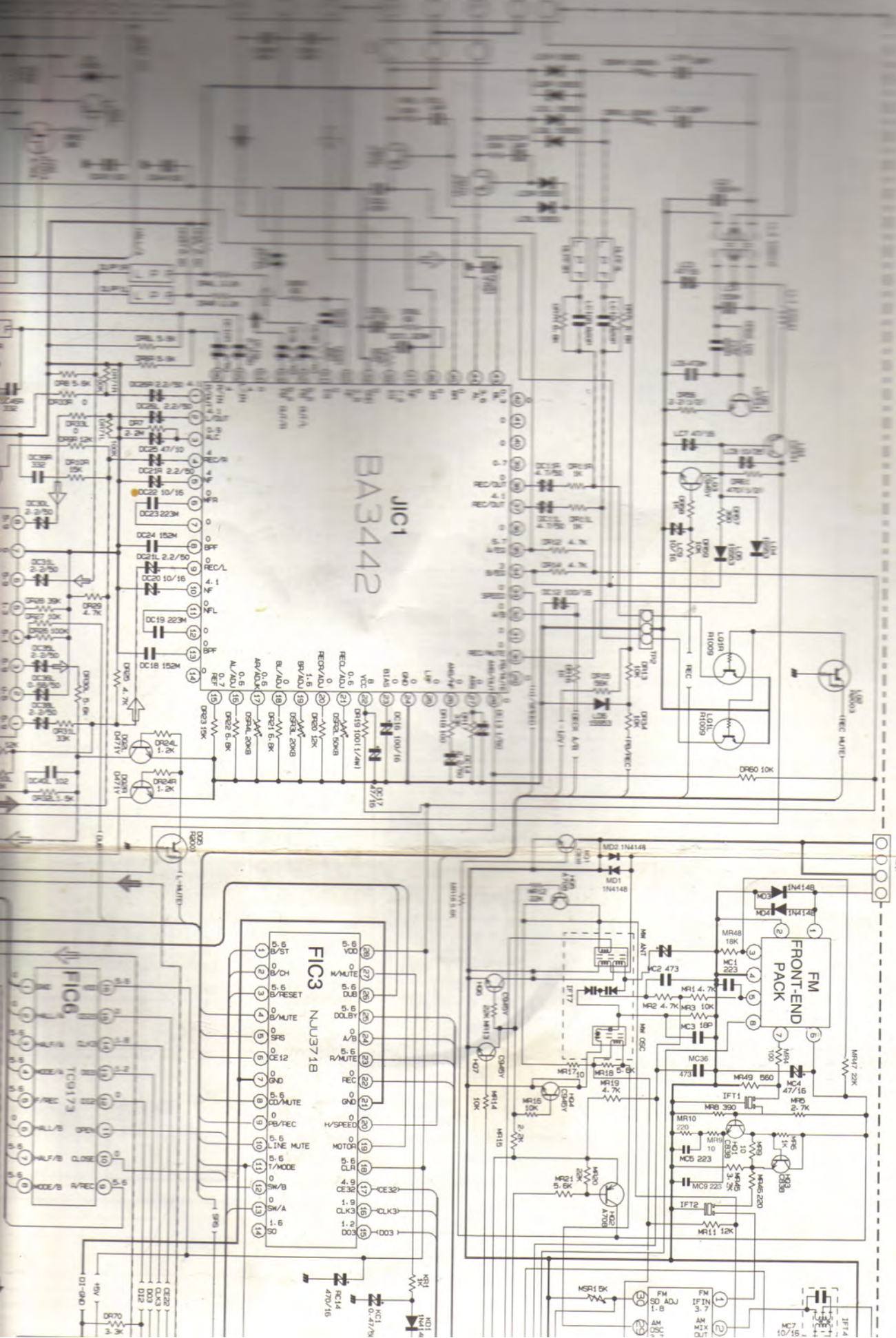




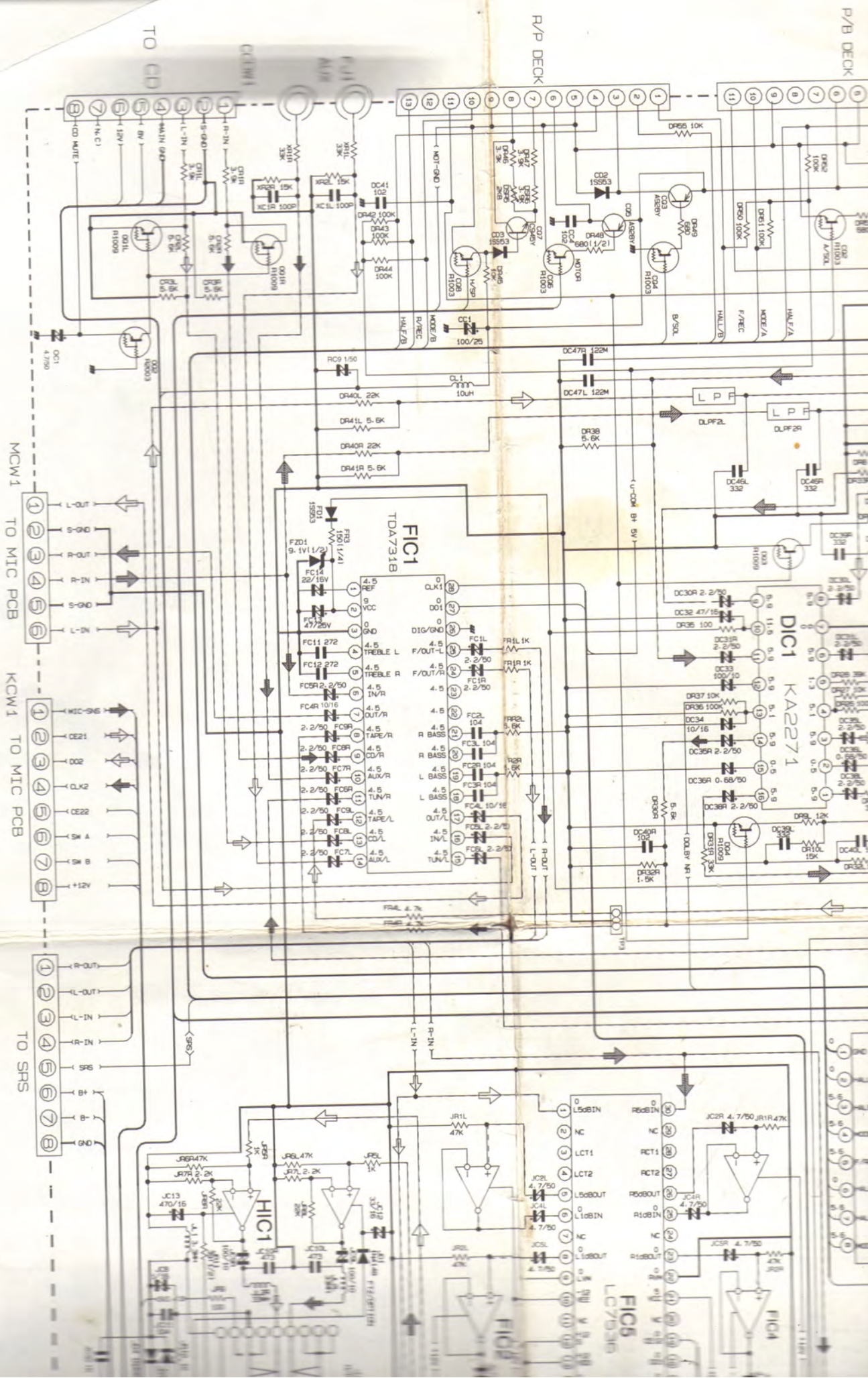
1024-1
1024 986
1024 103



AJ1 SPK
0V/4002



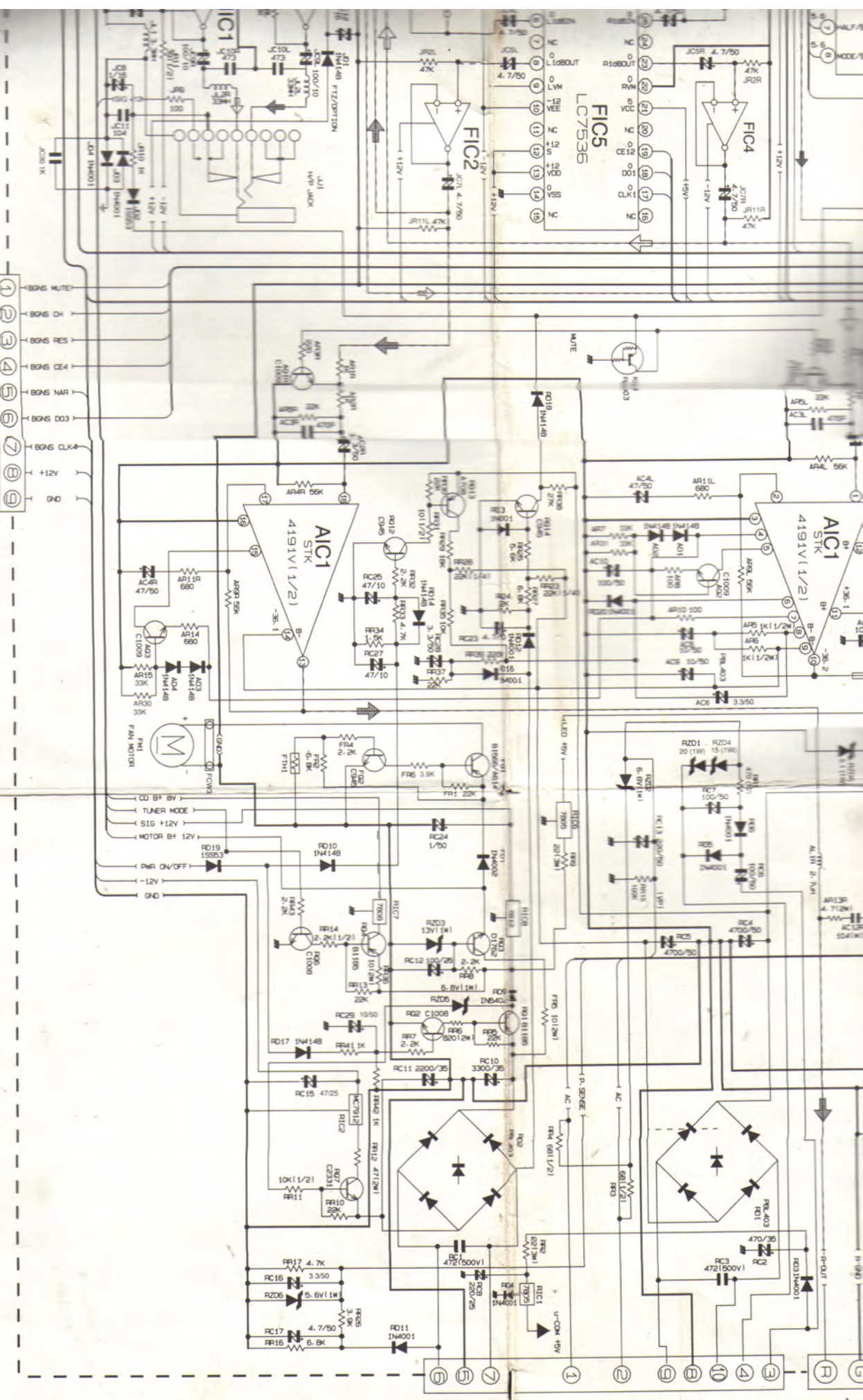
LC7586
RA13
RAT-



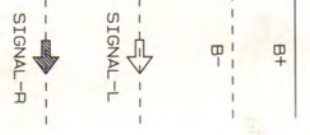
TO BGNS

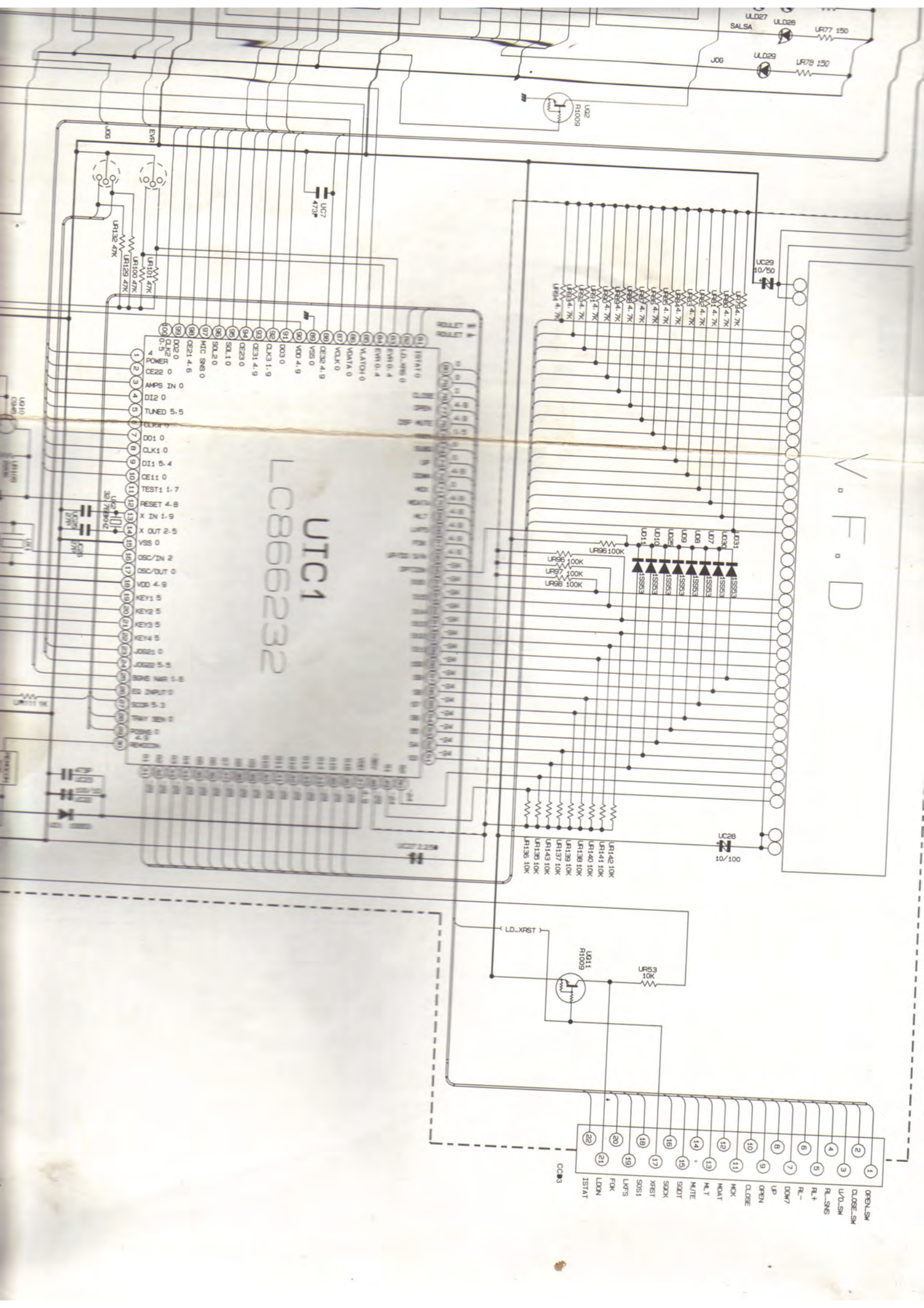
- 1 BONS MUTE
- 2 BONS DI
- 3 BONS RES
- 4 BONS CE4
- 5 BONS NAR
- 6 BONS D03
- 7 BONS CLK
- 8 +12V
- 9 GND

+



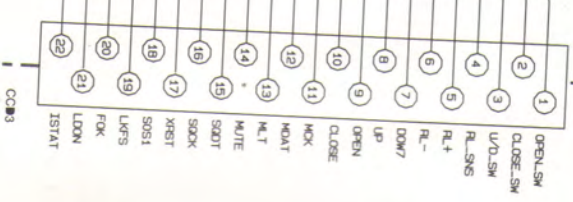
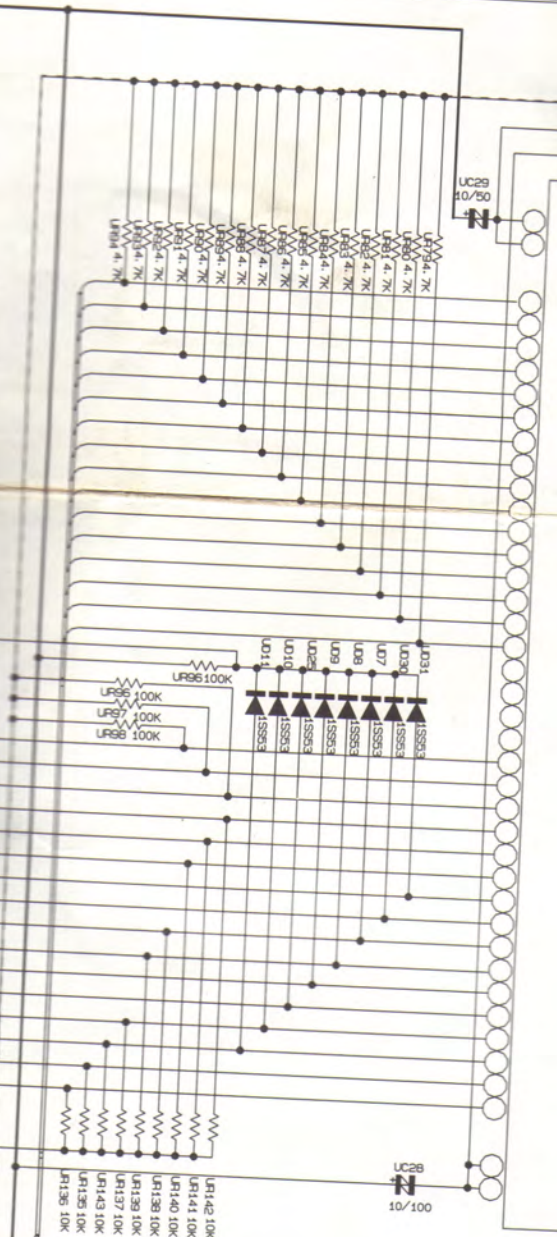
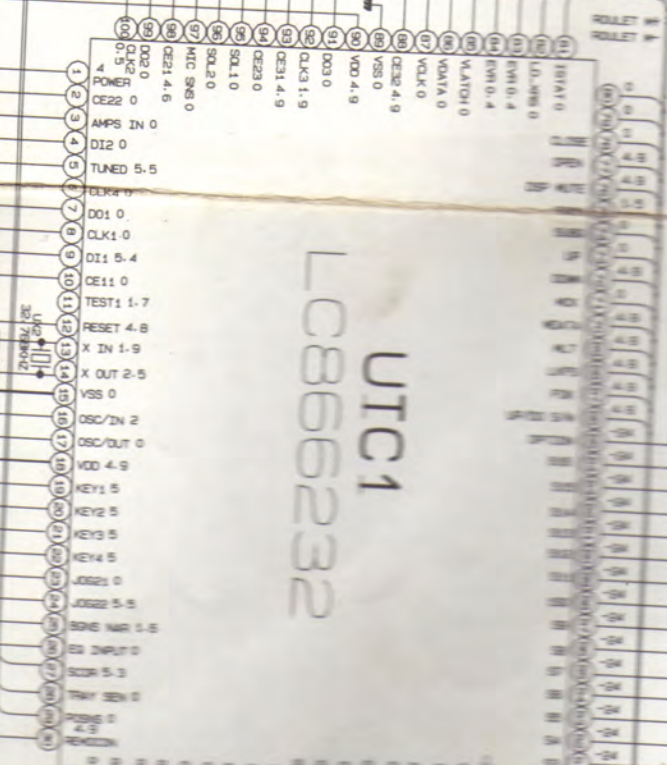
CCDW3 TO POWER PCB



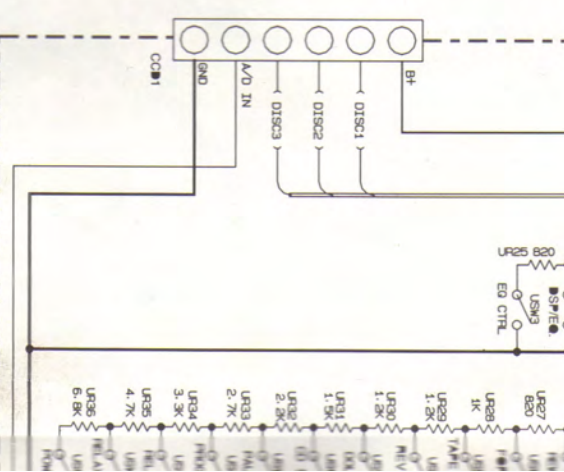
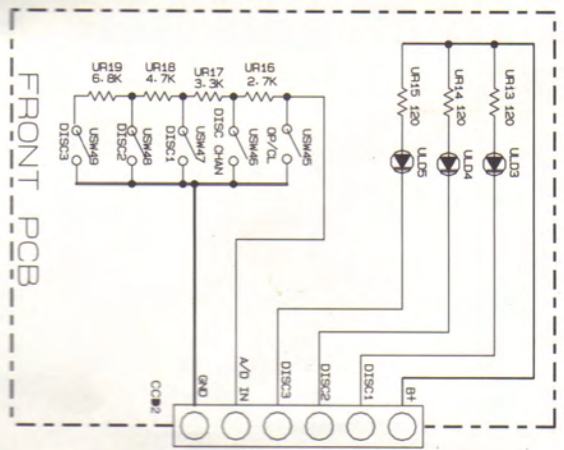
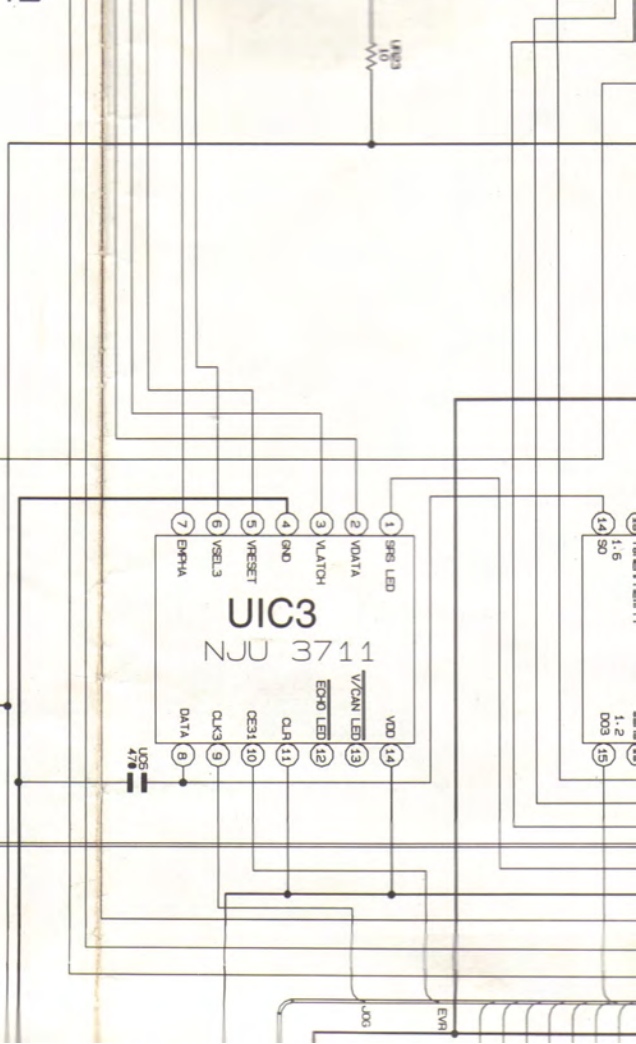
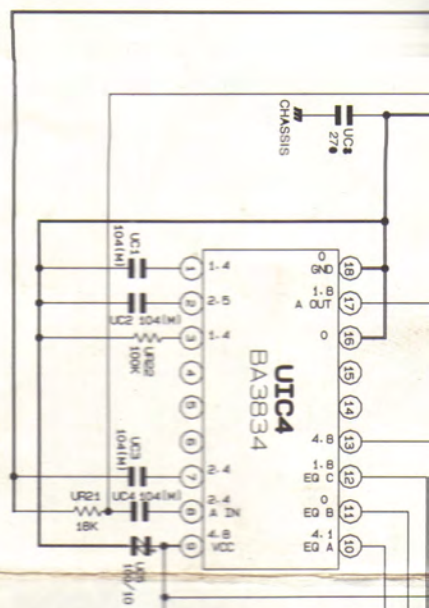


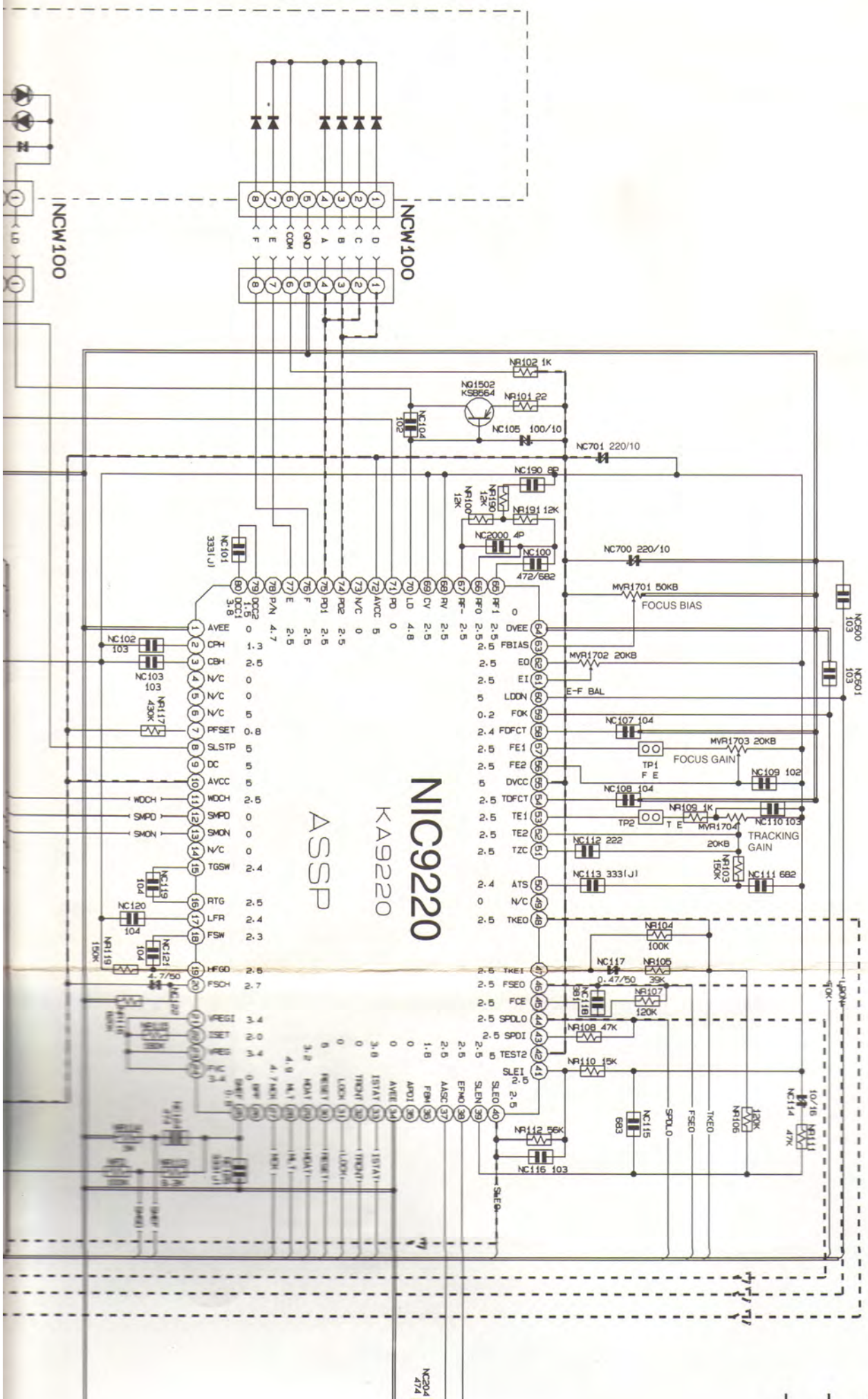
V. F. D.

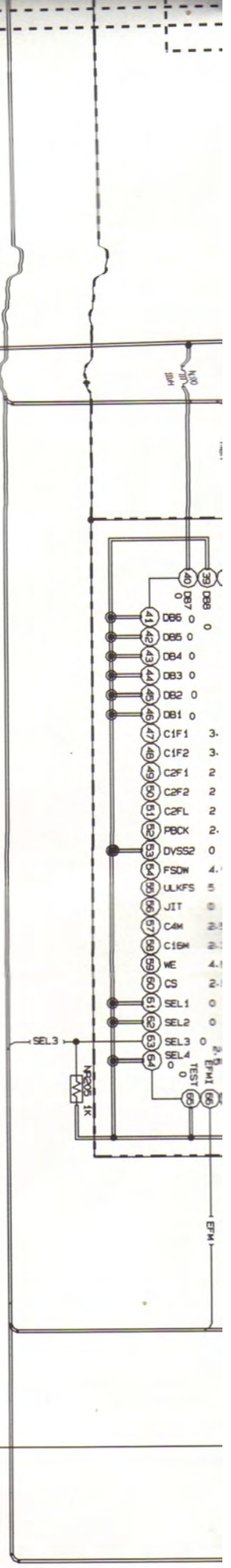
UTIC1
LC866232



SEL3
ERRHA
DOUBLE
RESET
V.LATCH
V.LATCH
V.LATCH
SDATA
VCLK

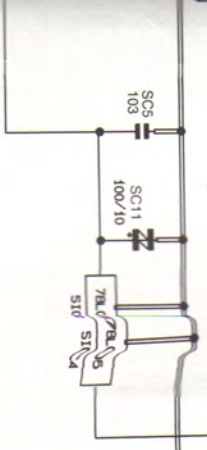
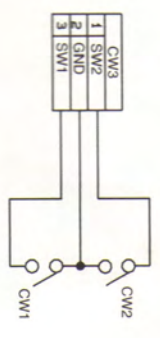
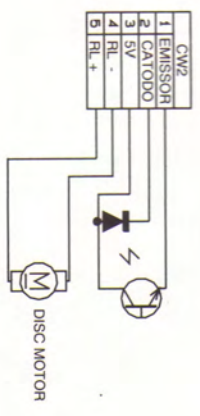




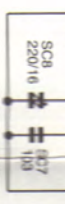


1	SCW3
2	MUTE
3	XCON
4	DB+
5	MB+
6	GND
7	L-CH
8	A GND
9	R-CH

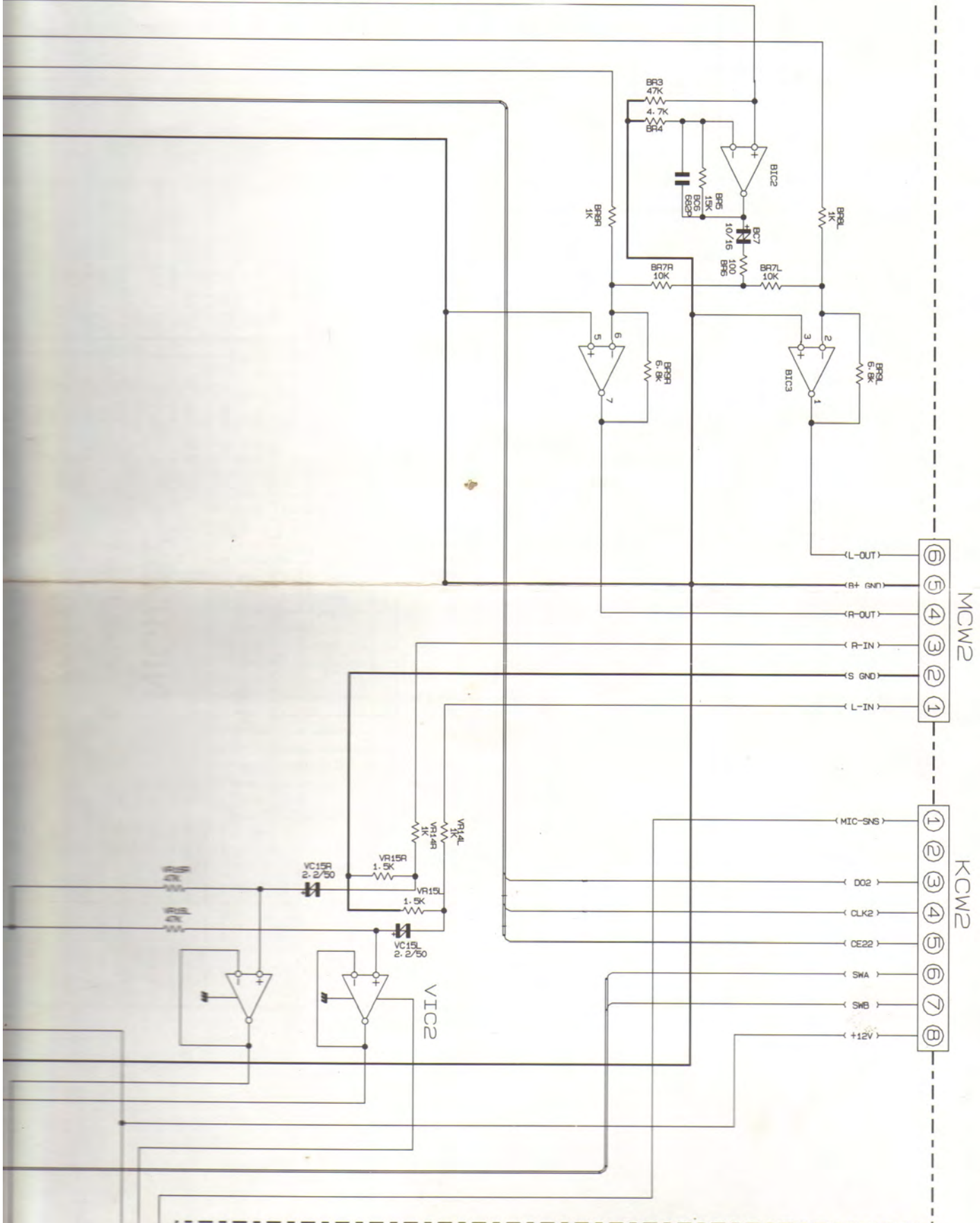
1	SCW4
2	MUTE
3	XCON
4	DB+
5	MB+
6	GND
7	L-CH
8	A GND
9	R-CH



510

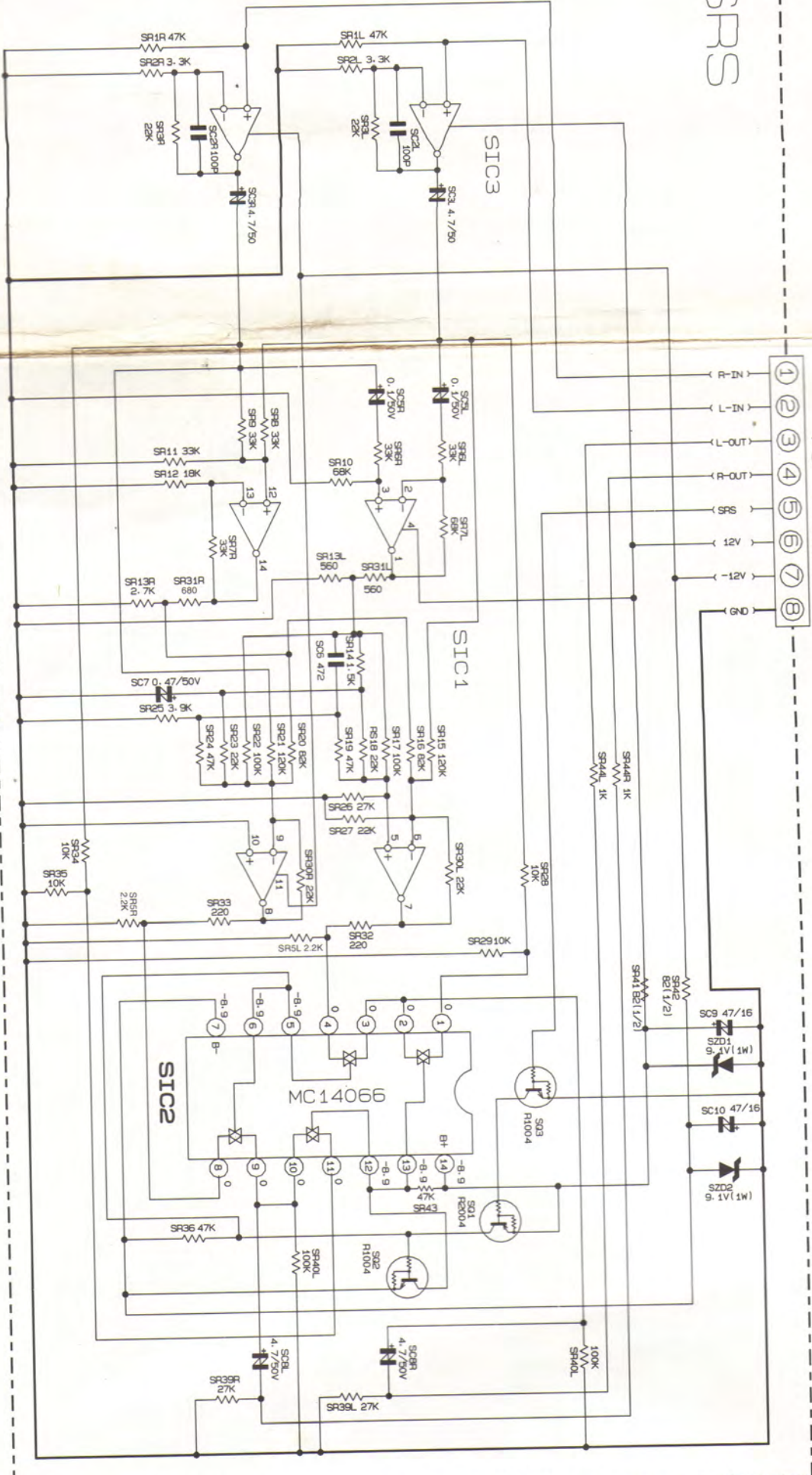


HO & VOICE CANCEL

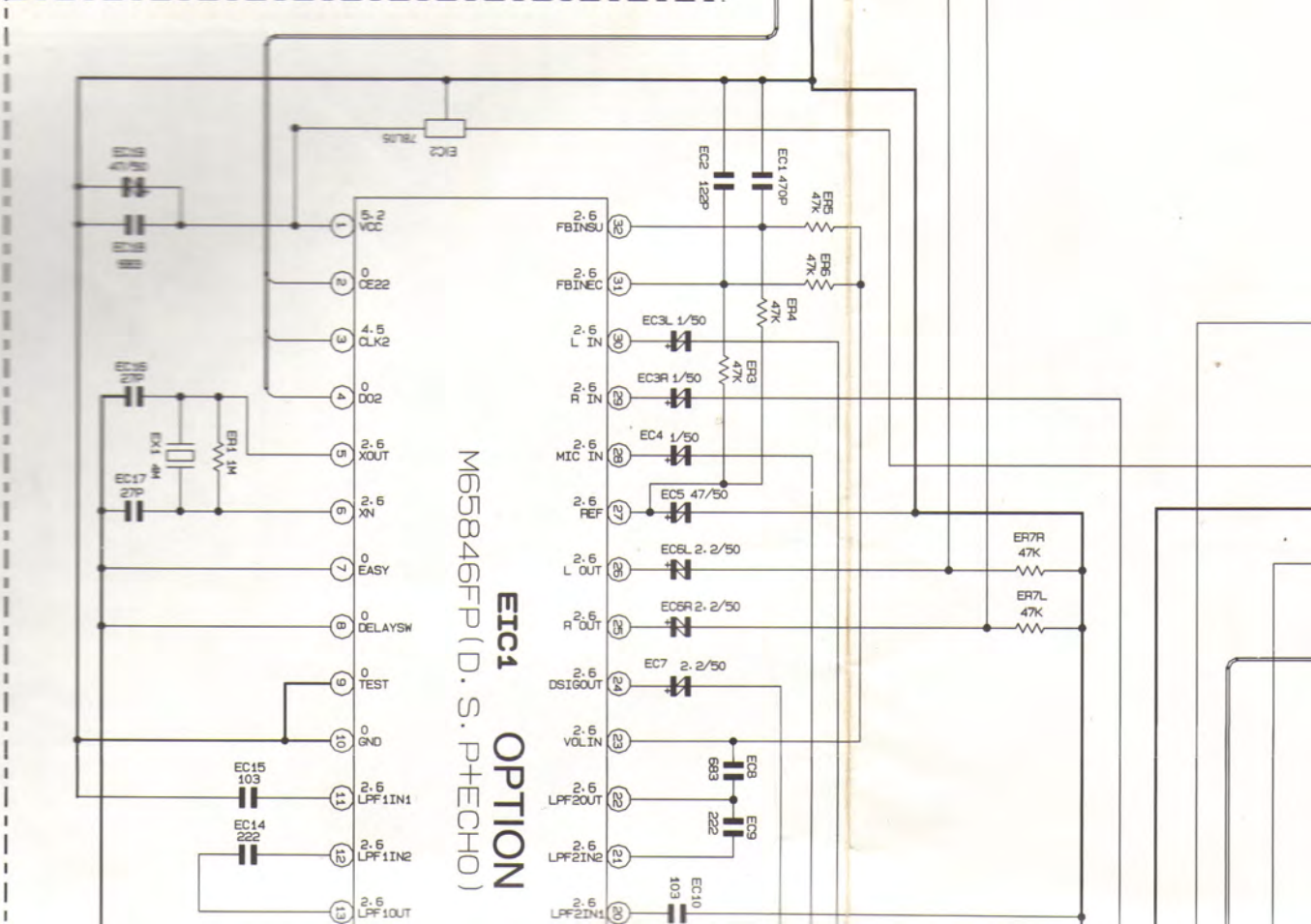
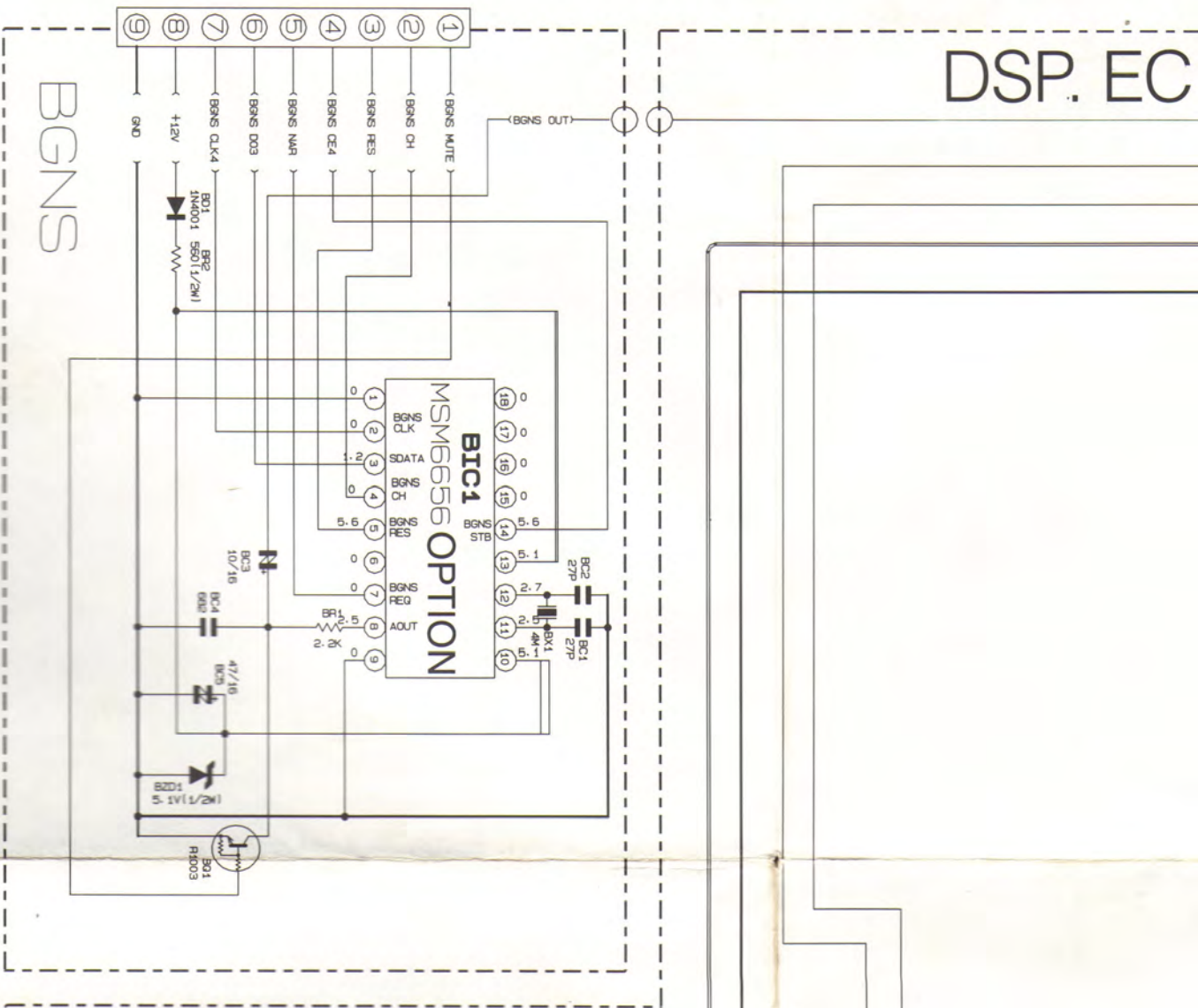


SRS

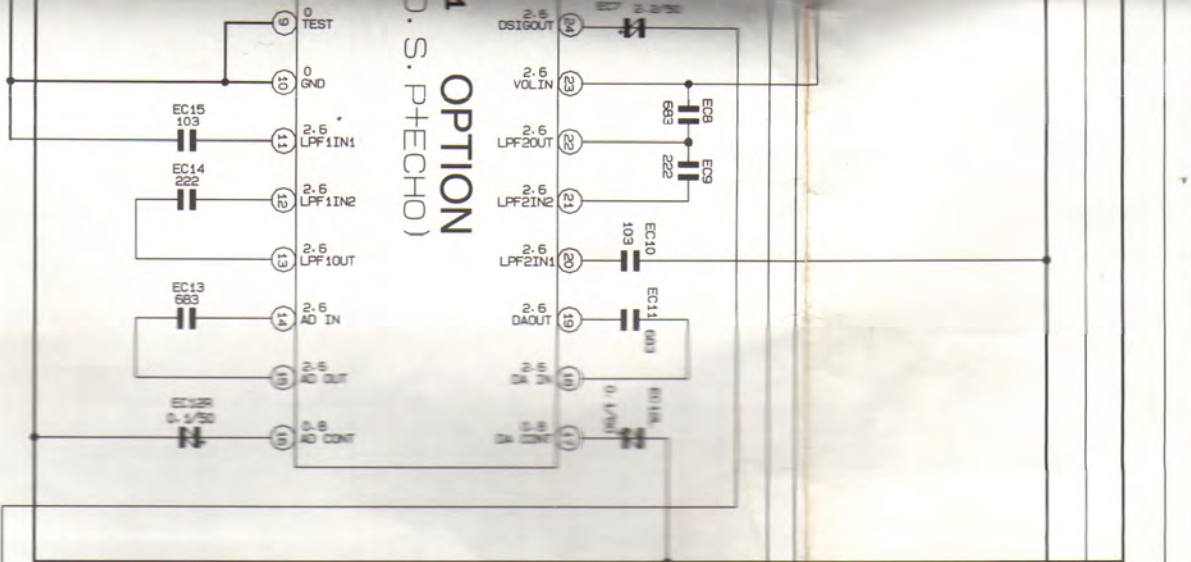
TO MAIN



DSP. EC



OPTION
(S. P+ECHD)



OPTION
M62453 (VOCAL CUT)
VIC1

