

TOSHIBA

DIRECT DRIVE RECORD PLAYER

SR-355



SPECIFICATIONS

PHONOMOTOR AND TURNTABLE

Drive system: Direct drive system
Motor: DC Servo motor(8poles,24slots)
Speeds: 33-1/3 and 45rpm (2speeds)
Speed control range: Within $\pm 2\%$ (individual control for 33-1/3 and 45rpm)
Wow/Flutter: Less than 0.04% WRMS
S/N Ratio: 60dB
Turntable platter: $\varnothing 315\text{mm}$ (1.6kg)(Aluminum diecast)

TONE ARM

Type: Static-balance system, S-shaped
Effective length: 222mm
Tracking error: within $\pm 2^\circ$
Overhang: 14mm

Range of stylus pressure: 0~4g
Anti-skating system: Stylus pressure response type
Replacement cartridge weight: 4~11g For UL CSA
1.5~8g For Europe,Australia

POWER SOURCE AND OTHERS

Power source: For UL,CSA AC120V 60Hz
For Europe,Australia AC220/240V,50Hz
Power consumption: For UL,CSA 4W
For Europe,Australia 5W
Dimensions: 471(18.5)_w \times 373(14.7)_D \times 190(7.5)_H mm(inch)
Weight: 12kg

TABLE OF CONTENTS

	PAGE
1. FEATURES	1
2. OPERATING INSTRUCTIONS	2
2-1 TOP VIEW	2
2-2 BACK VIEW	2
3. OPERATIONS	3
3-1 UNPACKING	3
3-2 ASSEMBLY PROCEDURE	3~4
4. DISASSEMBLY INSTRUCTIONS	5
5. ADJUSTMENT OF MAIN PARTS	5
5-1 ADJUSTMENT OF STYLUS PRESSURE	5
5-2 ADJUSTMENT OF ELEVATION HEIGHT	6
5-3 ADJUSTMENT OF TURNTABLE REVOLUTION	6
6. SCHEMATIC DIAGRAM	7
7. BOTTOM VIEW OF POWER SUPPLY P.C.BOARD	7
8. SEVERAL PARTS CONNECTIONS	8
9. EXPLODED VIEW PLAYER I	9
PLAYER II	10
10. PARTS LIST	11

1. FEATURES

1. Direct Drive System

SR-355 employs direct drive system.

Unlike conventional types of turntable using a drive belt or an idling wheel for driving the turntable, SR-355 is so designed that the turntable is driven directly by the motor (the turntable is directly coupled with the motor shaft), thus assuring everlasting performance and longer life.

2. DC Servo Control Motor

DC servo motor is completely free from the affect of variation in power supply frequency, providing smooth and stable revolution of the turntable.

Changeover of the turntable speed is accomplished by electronic pushbutton system.

Either 33-1/3 or 45rpm can be adjusted precisely by the stroboscope and the appropriate speed control knob.

3. Deluxe S-shaped Static Balance Tone-arm

The tone-arm features exceptional sensitivity in both horizontal and vertical directions. It permits the cartridge to offer the ultimate in the performance.

4. Arm Elevation System

The tone-arm is easily raised and lowered by the tone-arm elevation lever to protect the valuable stylus and records from the damage.

5. Anti-skating Device.

The stylus pressure response type anti-skating system provides stable tracking along the record groove.

6. Plug-in Head

The plug-in head shell system permits the user to choose any variety of cartridges available in the market.

7. 31.5cm Turntable with Stroboscope

The precision-made turntable with its big 31.5cm in diameter maintains wowless operation.

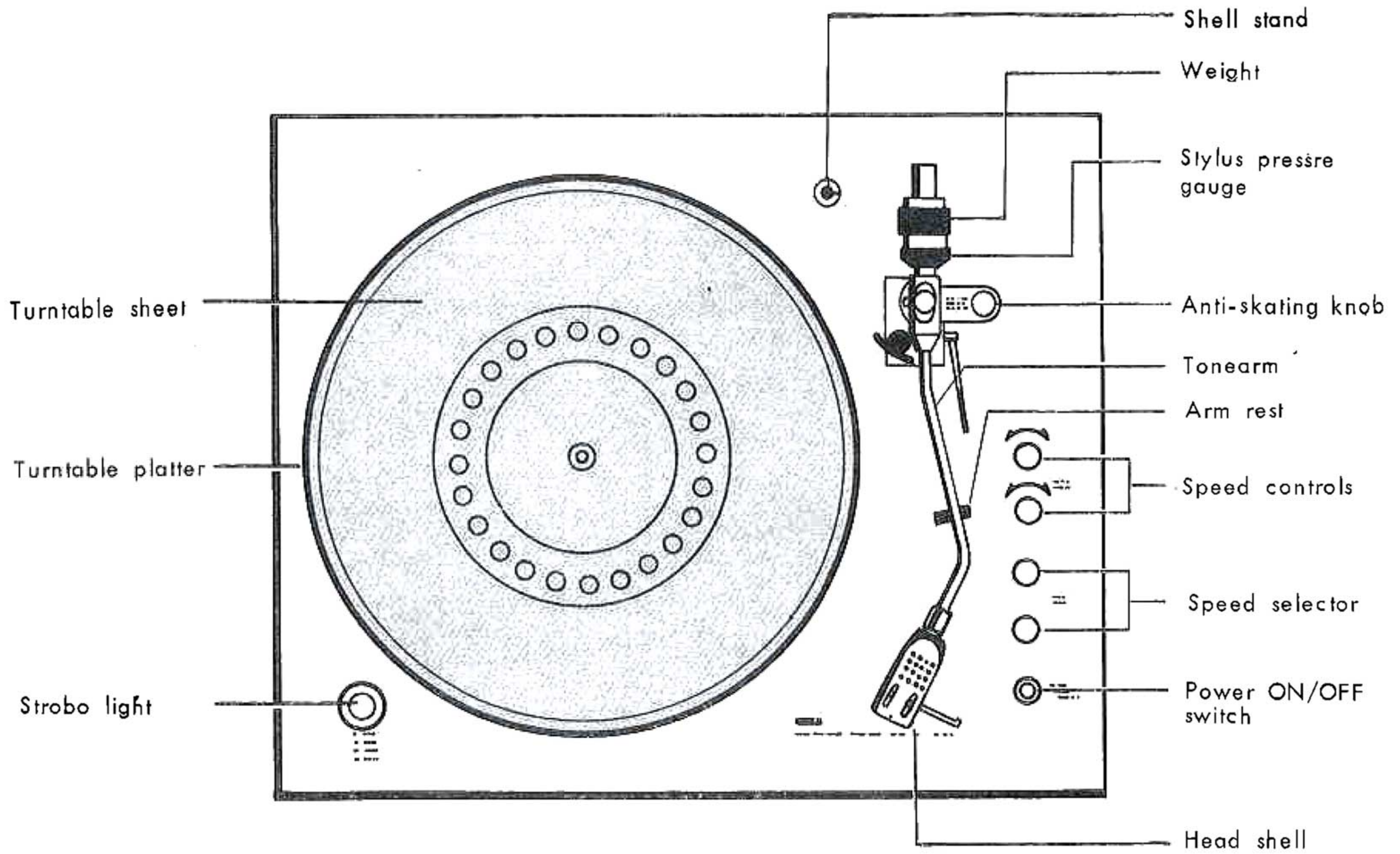
8. Insulator

The unique insulators attached to the four corners of the bottom of the cabinet prevent vibrations from external sources and howling.

They are also effective in minimizing shocks during operation.

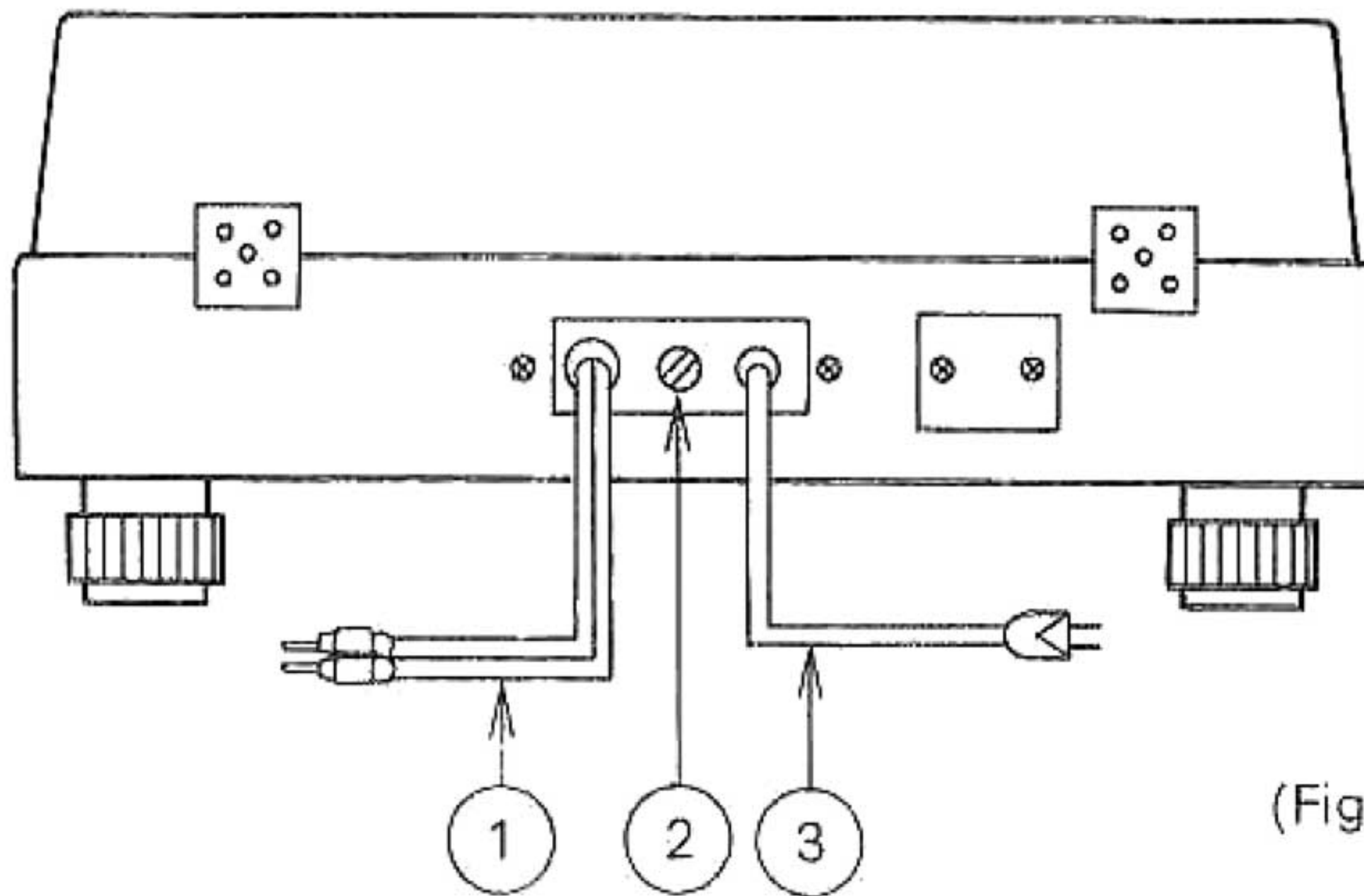
2. OPERATING INSTRUCTIONS

2-1 TOP VIEW



(Fig-1)

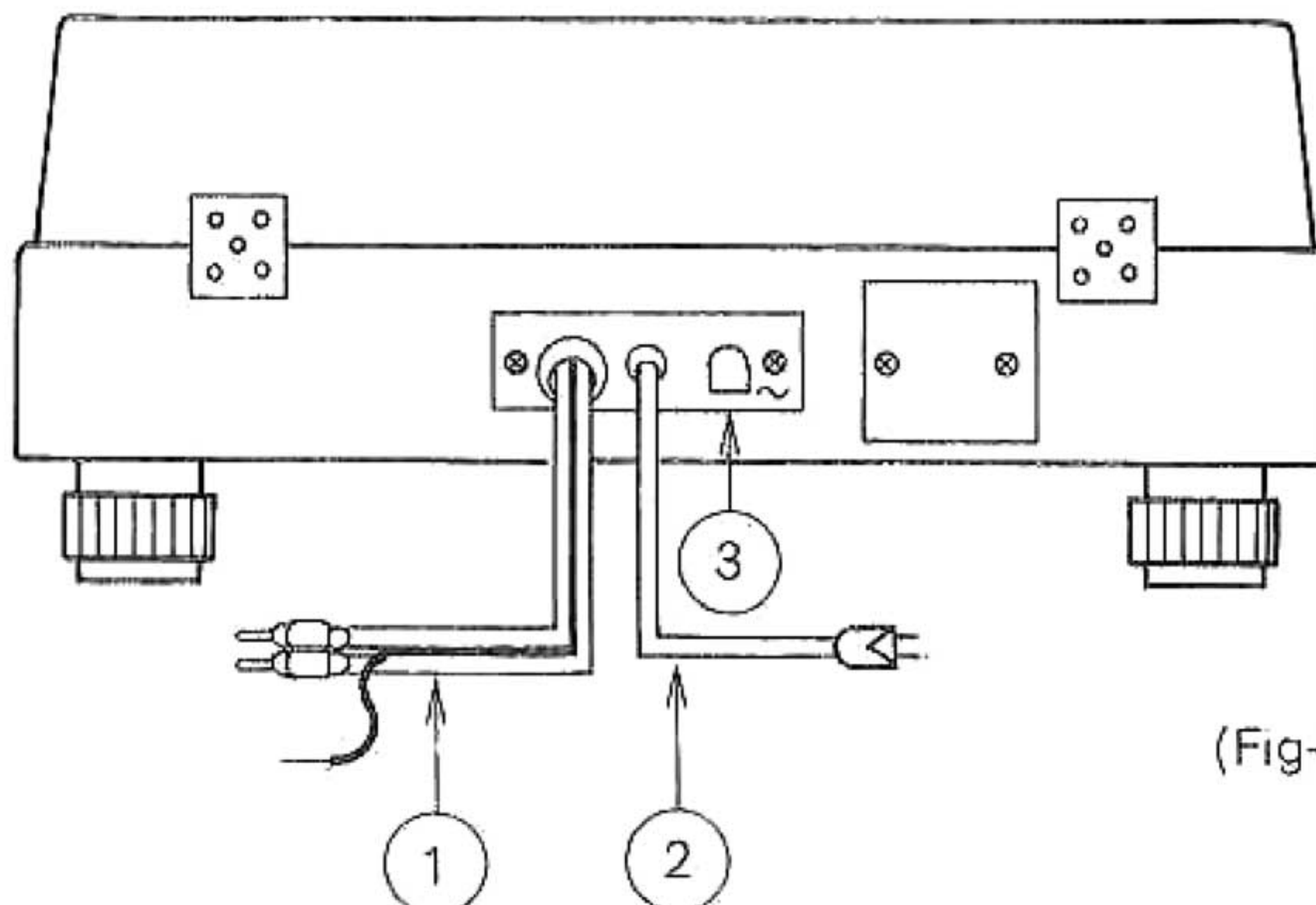
2-2 BACK VIEW



(Fig-2)

For UL, CSA(Fig-2)

- ① Output Terminal
- ② Earth Terminal
- ③ Power plug



(Fig-3)

For Europe, Australia(Fig-3)

- ① Output and Earth Terminal
- ② Power plug
- ③ Voltage Selector switch

3. OPERATIONS

3-1 UNPACKING

1. Remove the case located on the packing material.
2. Take out the player and packing material from the carton.
3. Remove the tape holding the tone-arm.
4. Head shell, weight and overhang gauge are contained in the case.

3-2 ASSEMBLY PROCEDURE

a) Prepare the player for operation as follows:

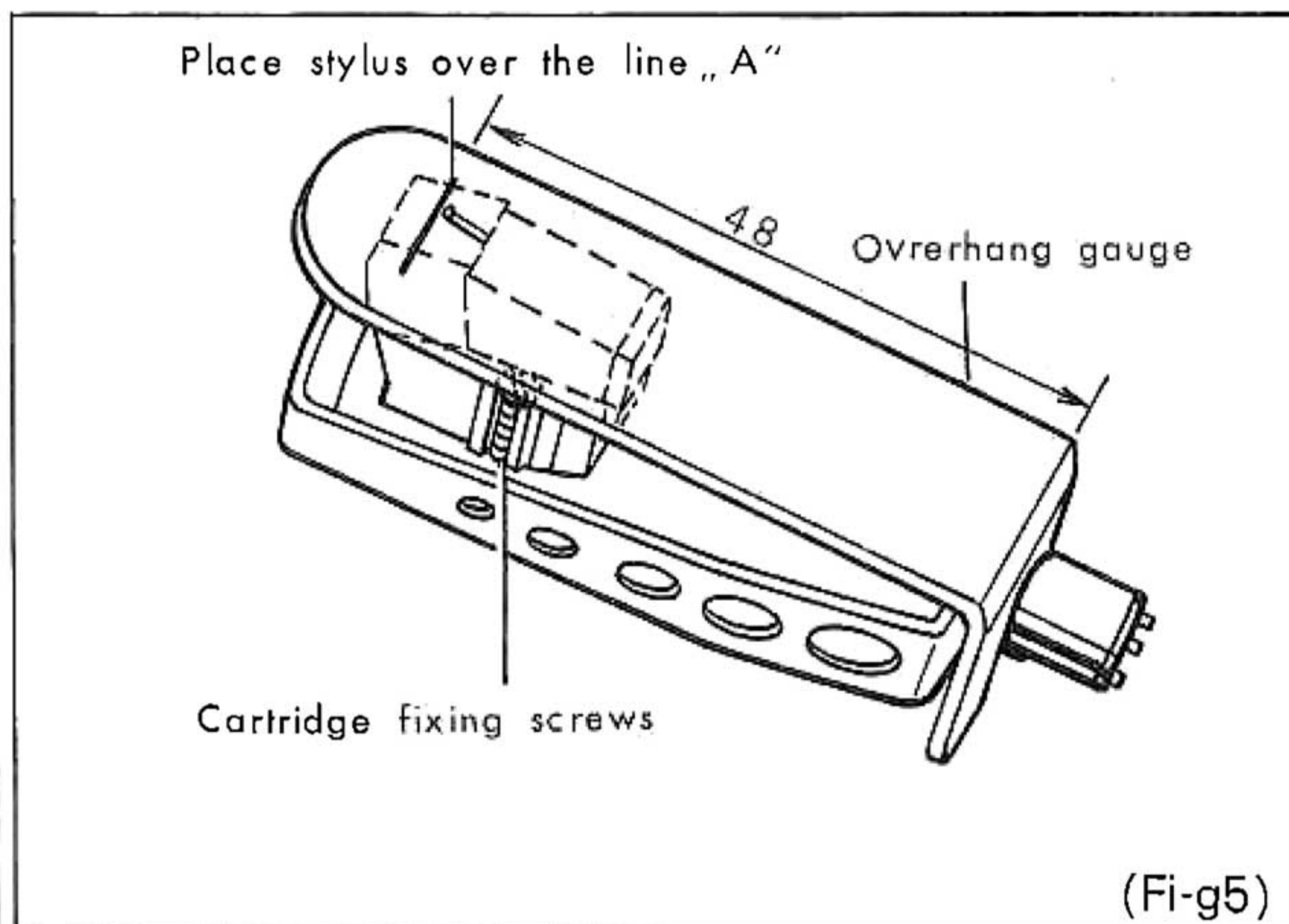
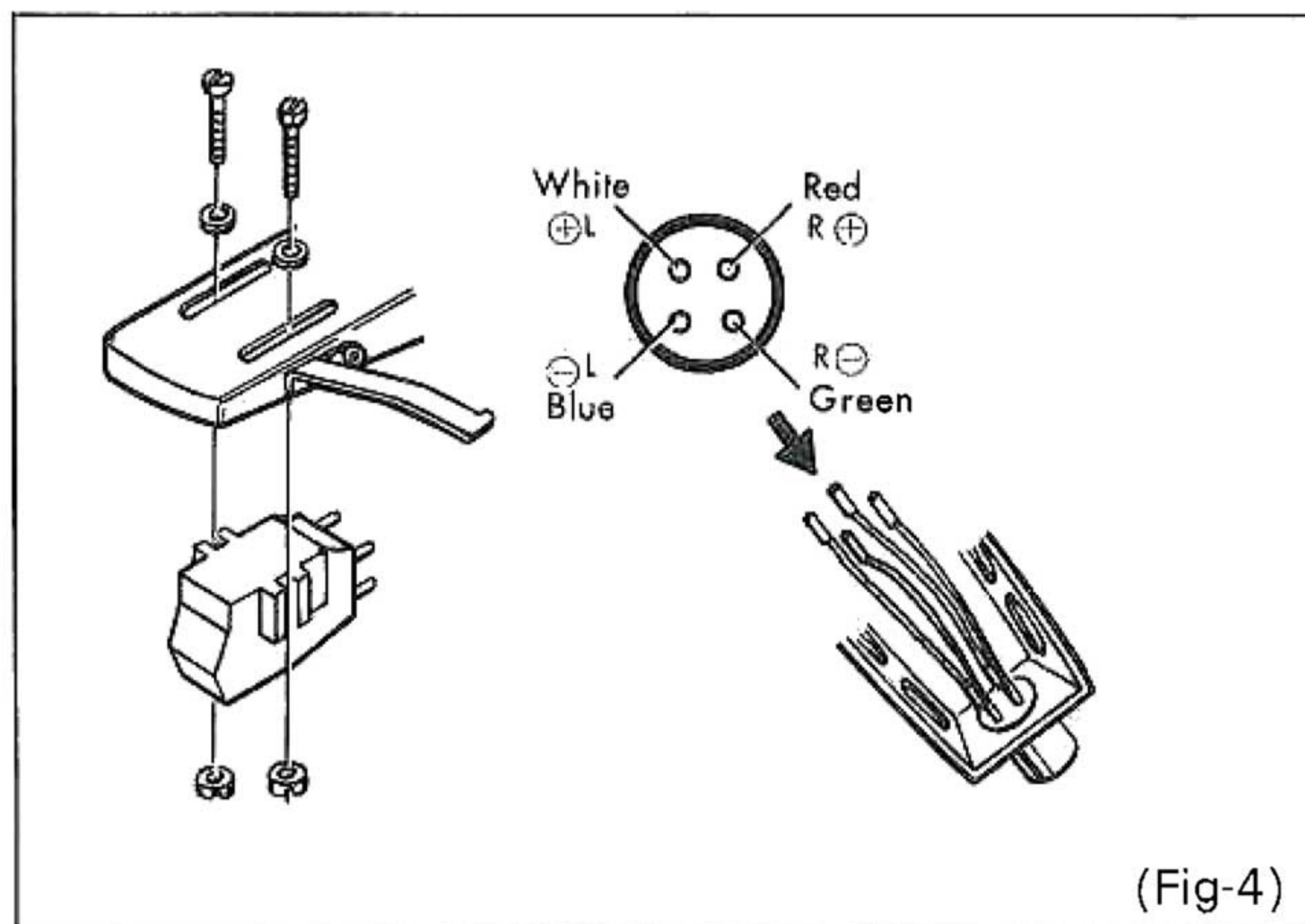
1. Take out the turntable from the package and install it on the player.
2. Place the turntable sheet on the turntable.
3. Set your optional cartridge to a head shell of accessory.

Terminal connectors of both the tone arm and the head shell comply with the International Standards.

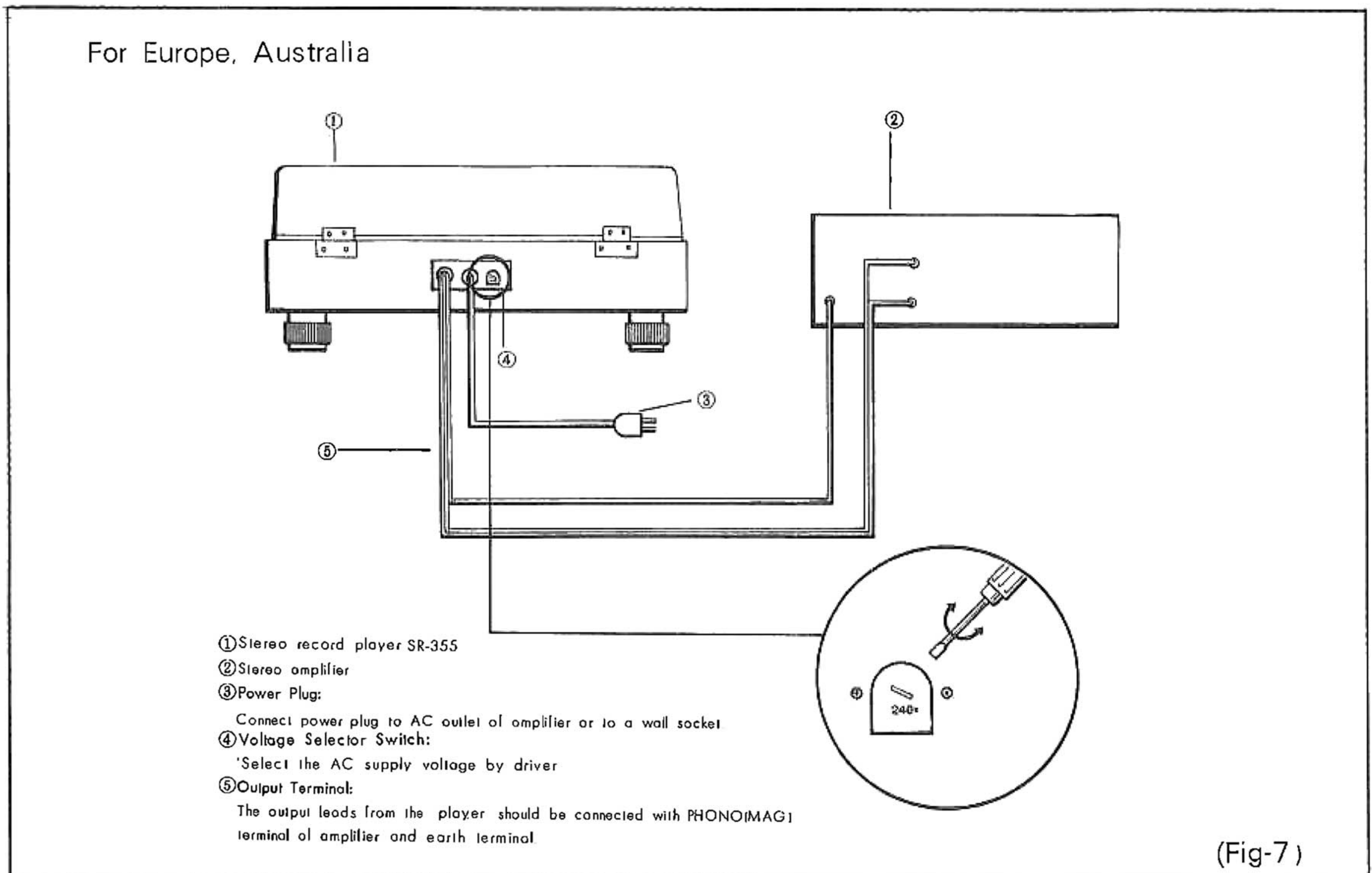
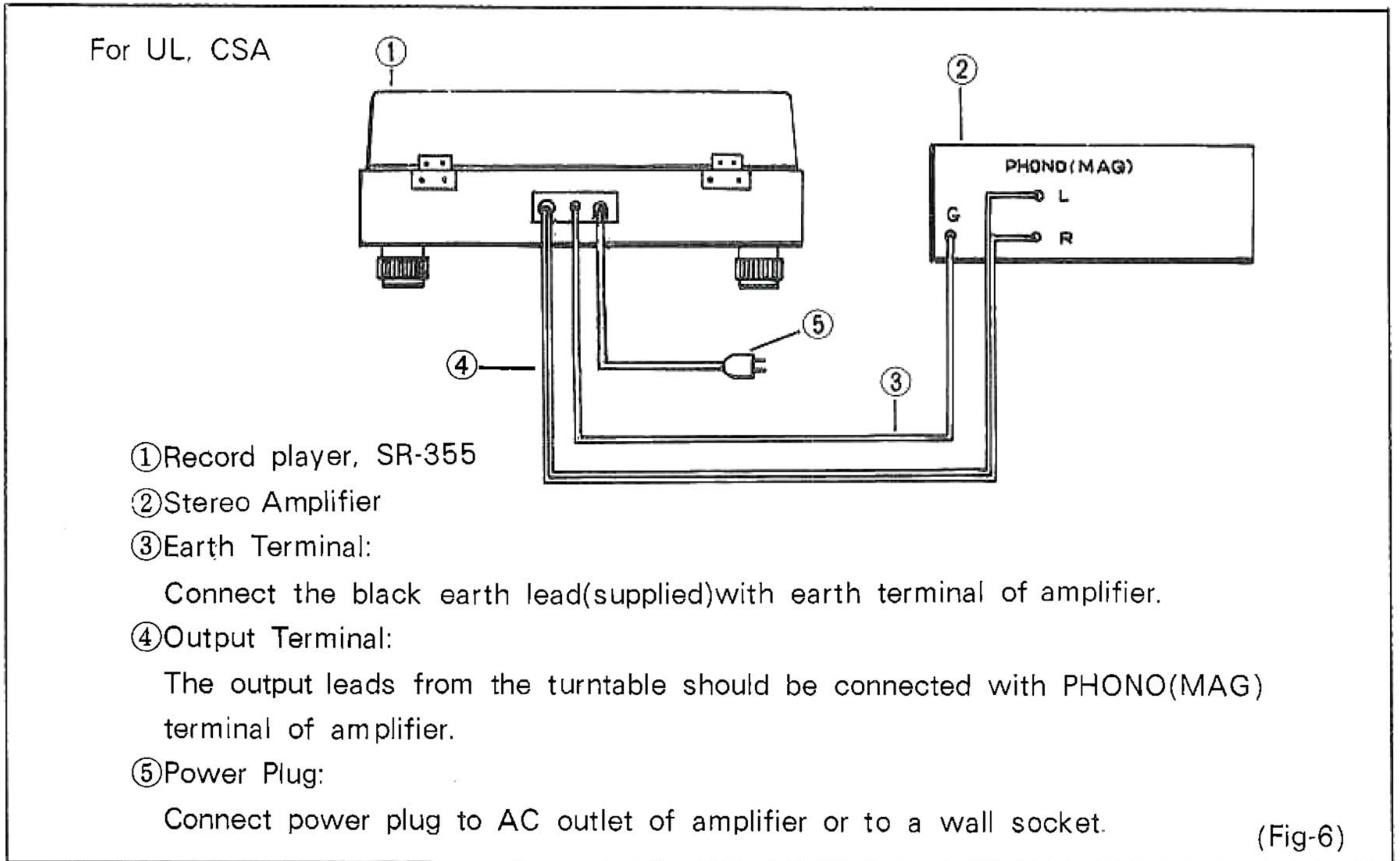
Be sure to connect the leads of the head shell to the cartridge correctly. (Fig-4)

Before fixing the cartridge to the head shell be sure to perform overhang adjustment after tightening the cartridge slightly by fixing screws and nuts. (Fig-5)

4. Set the head shell and the weight.
5. Adjust the stylus pressure. (Fig-9)



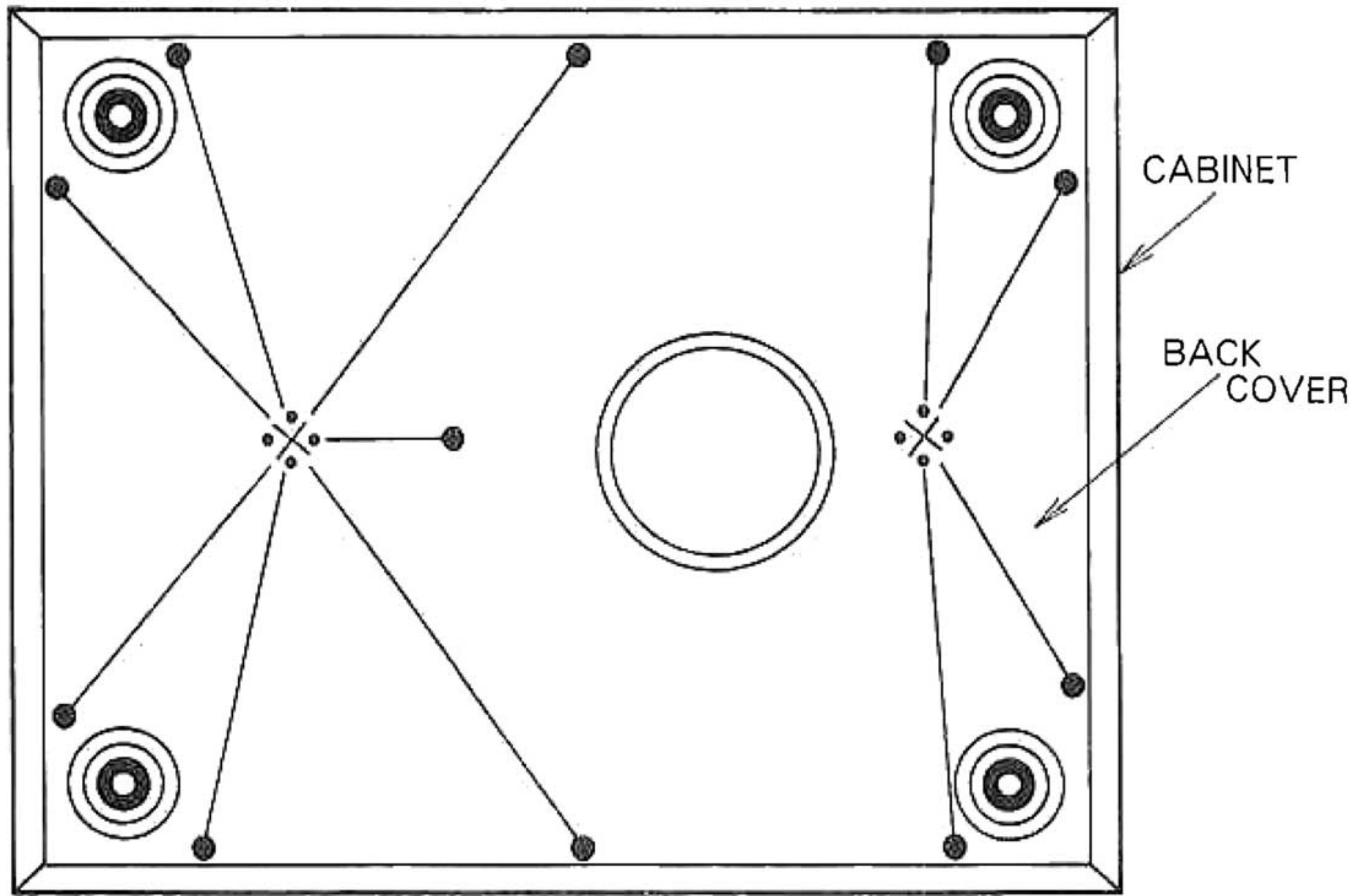
b) Connections



4. DISASSEMBLY INSTRUCTIONS

BACK COVER REMOVAL(Figure)

- a) Remove the dust cover, turntable sheet and turntable.
- b) Remove the eleven mounting wood screws marked(※)from the cabinet.



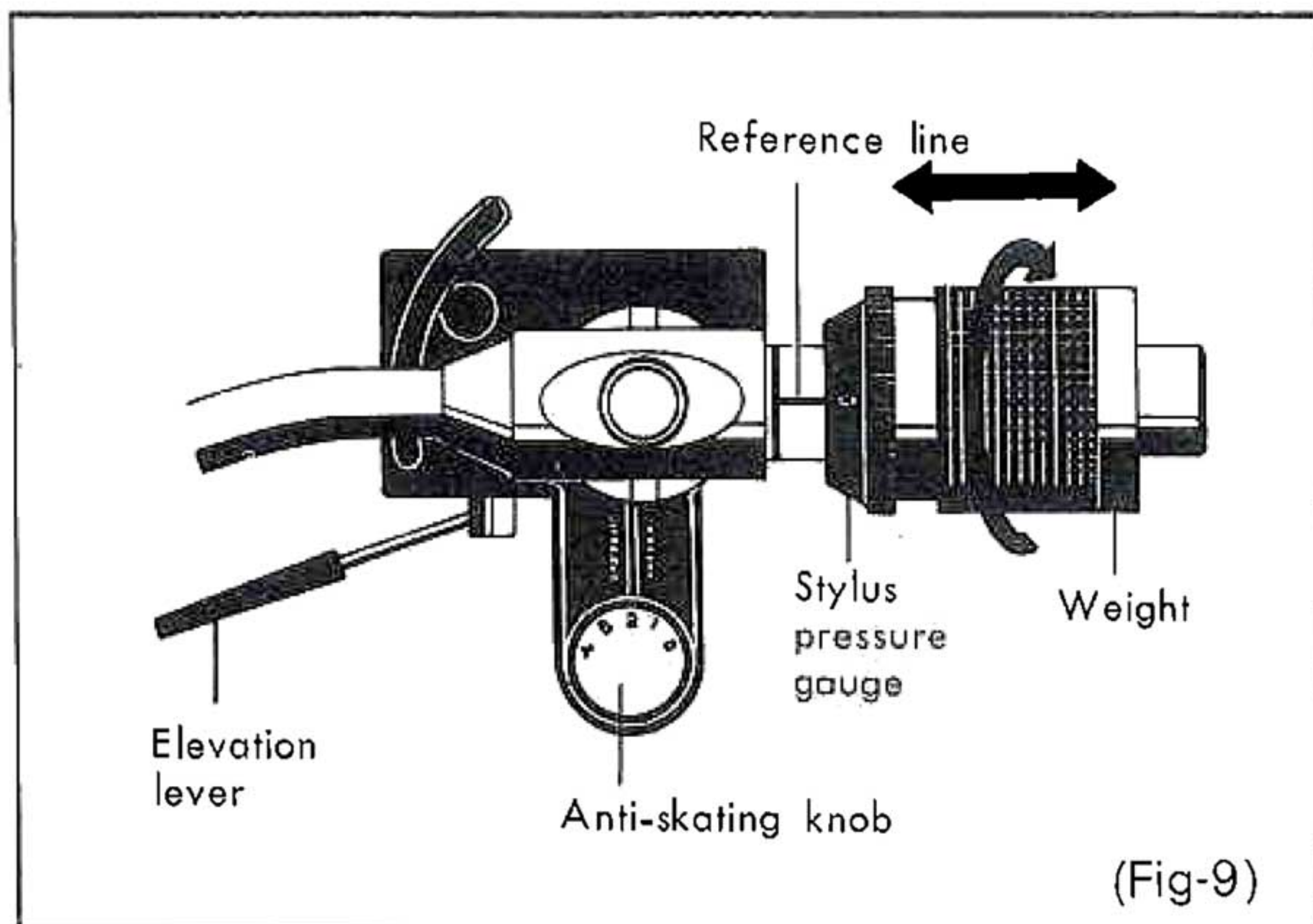
(Fig-8)

5. ADJUSTMENT OF MAIN PARTS

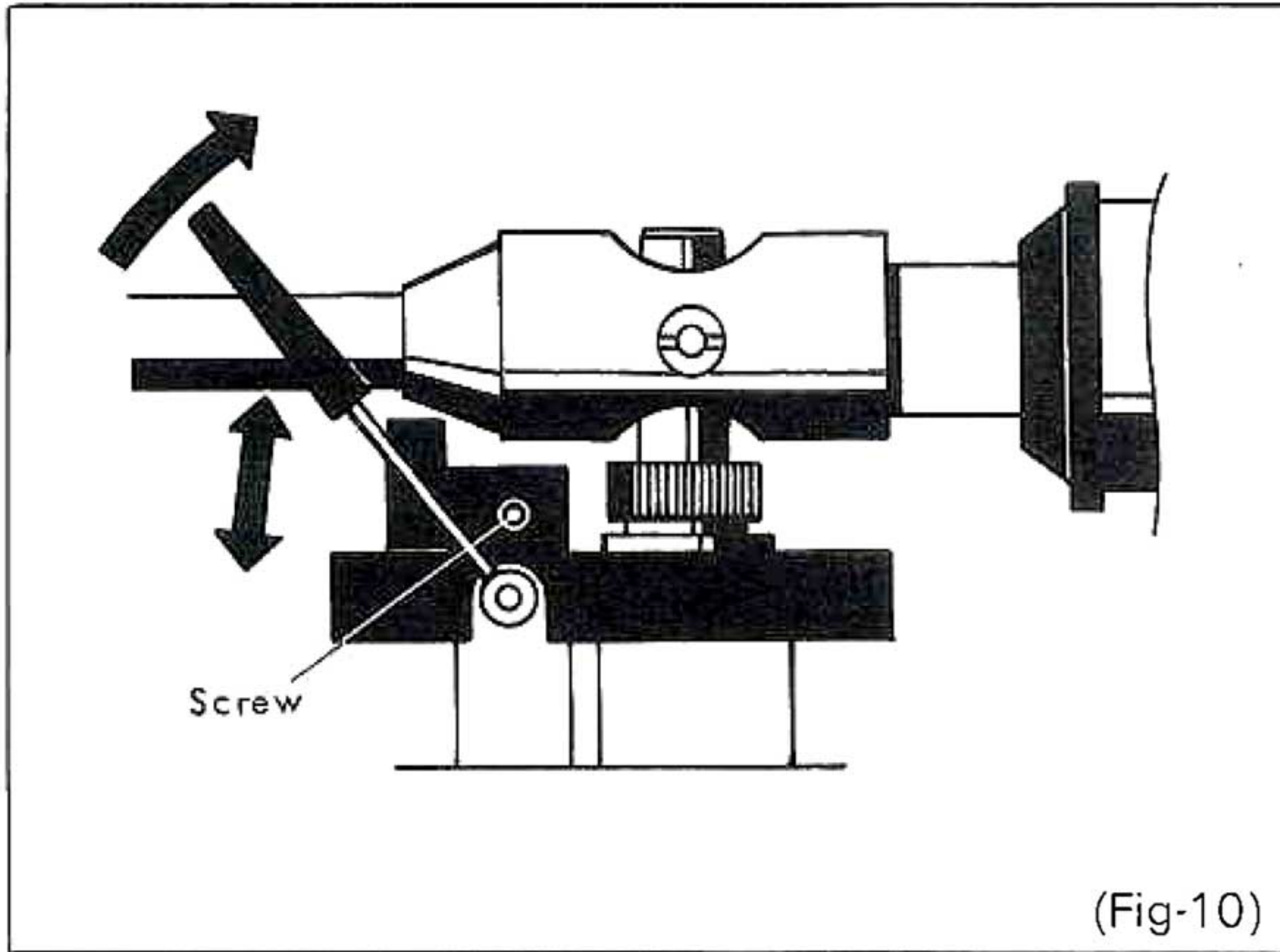
5-1. ADJUSTMENT OF STYLUS PRESSURE

Before adjusting the pressure, ascertain that the power switch of your amplifier is OFF when it is connected with player.

1. Set the anti-skating knob to the 'O' position.
2. Keep the elevation lever down and then lift the tone-arm from the arm rest by your hand.
3. By turning the weight adjust the balance of the tone-arm until it gets level. Then turn the stylus pressure gauge to set 'O' marked on it to reference line marked on the tone-arm.
4. Turn the weight in the direction of the arrow to adjust the stylus pressure desired by the cartridge in use watching stylus pressure gauge to optimum stylus pressure.
5. To get the optimum performance, the anti-skating knob is to be set to the identical graduations to the stylus pressure gauge.



5-2. ADJUSTMENT OF ELEVATION HEIGHT

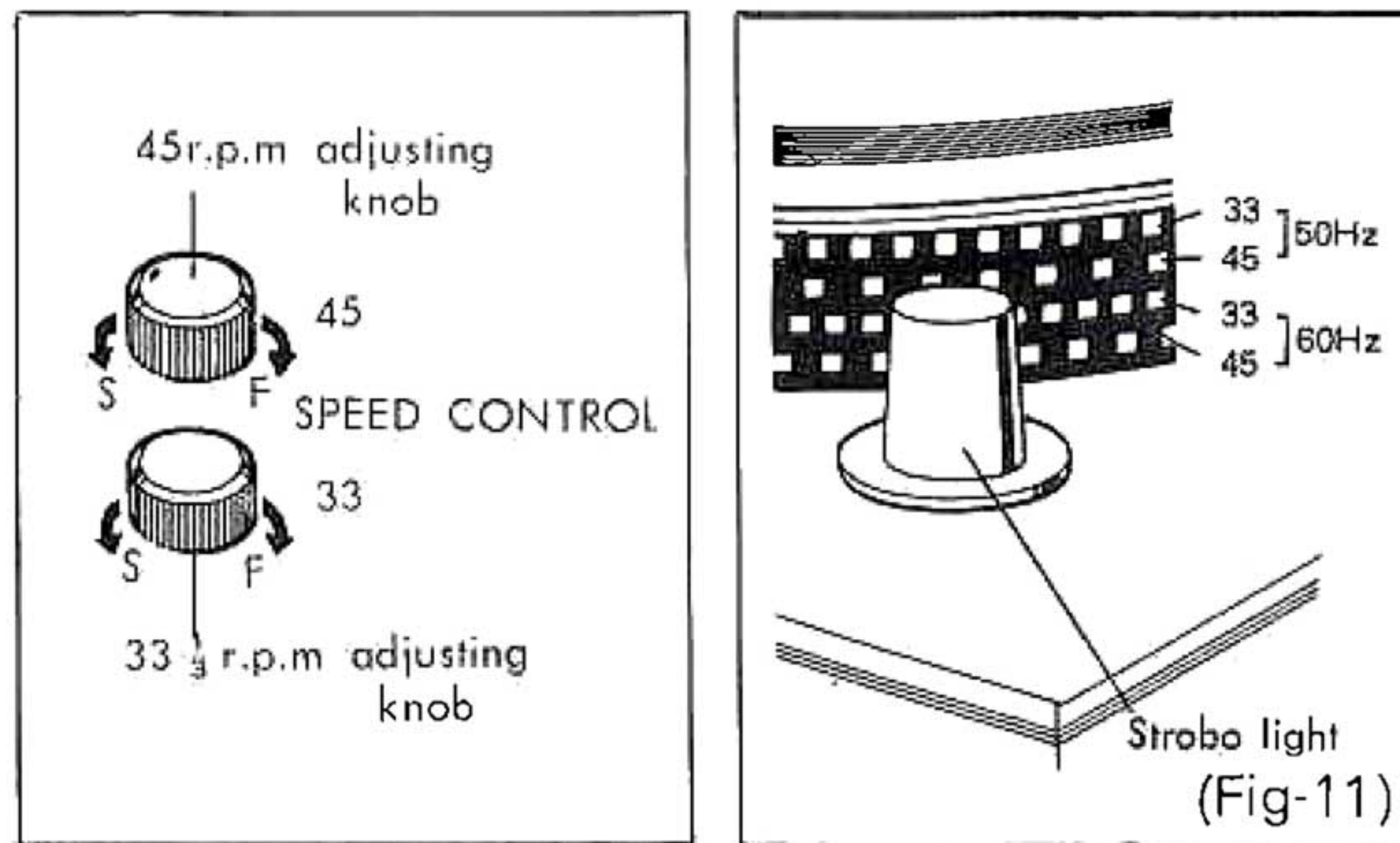


The elevation height is adjusted in the factory to obtain 5-10mm of the distance between the surface of record and the stylus (when the elevation lever is lifted).

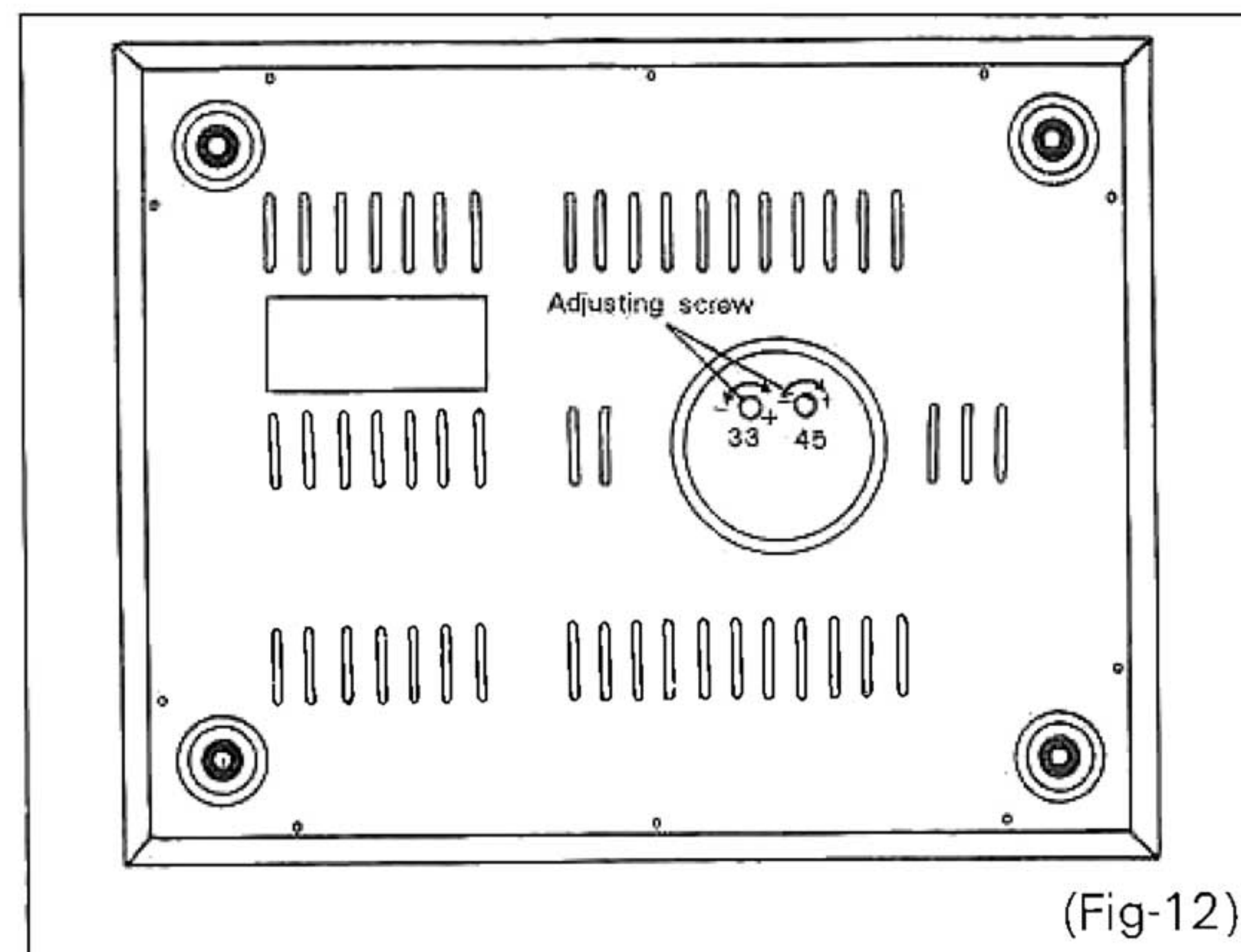
Should readjustment become necessary for any reason or after replacement of the cartridge, loosen the screw (see the illustration) and adjust the height of the tone-arm. After the adjustment, tighten the screw securely. (Fig-10)

5-3. ADJUSTMENT OF TURNTABLE REVOLUTION

■ Adjustment of revolution with Strobe light,



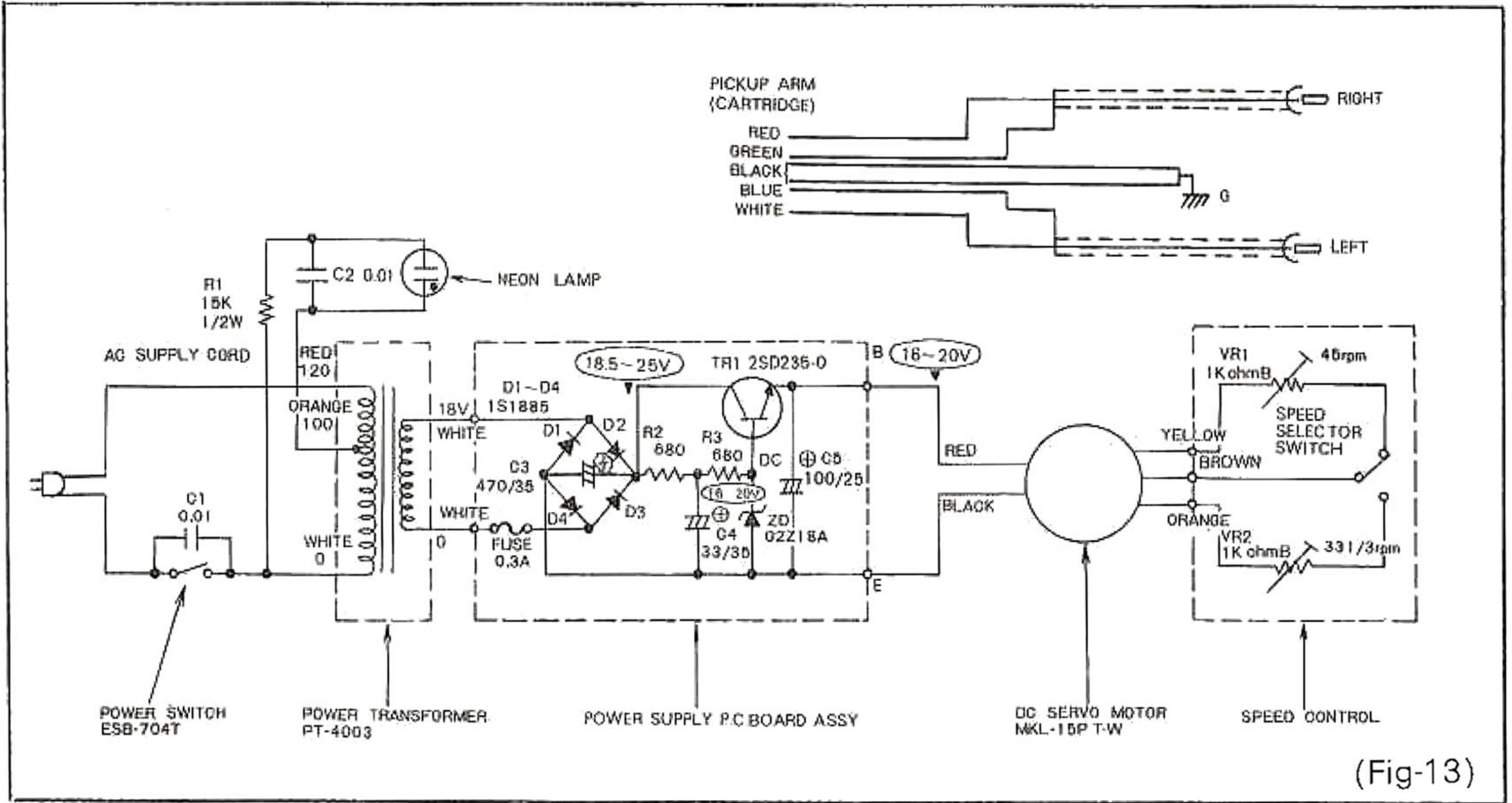
a) Adjustment of revolution by speed control knobs (Fig-11)
Turntable speed can be adjusted to $\pm 2\%$ each 33-1/3, 45r.p.m. by speed control knobs while observing the Strobe light.



b) Adjustment of revolution by adjusting screws (Fig-12)
Put a (-) screwdriver in the 33-1/3 or 45r.p.m. adjustment hole at the bottom and adjust to $\pm 6\%$ while observing the Strobe light.

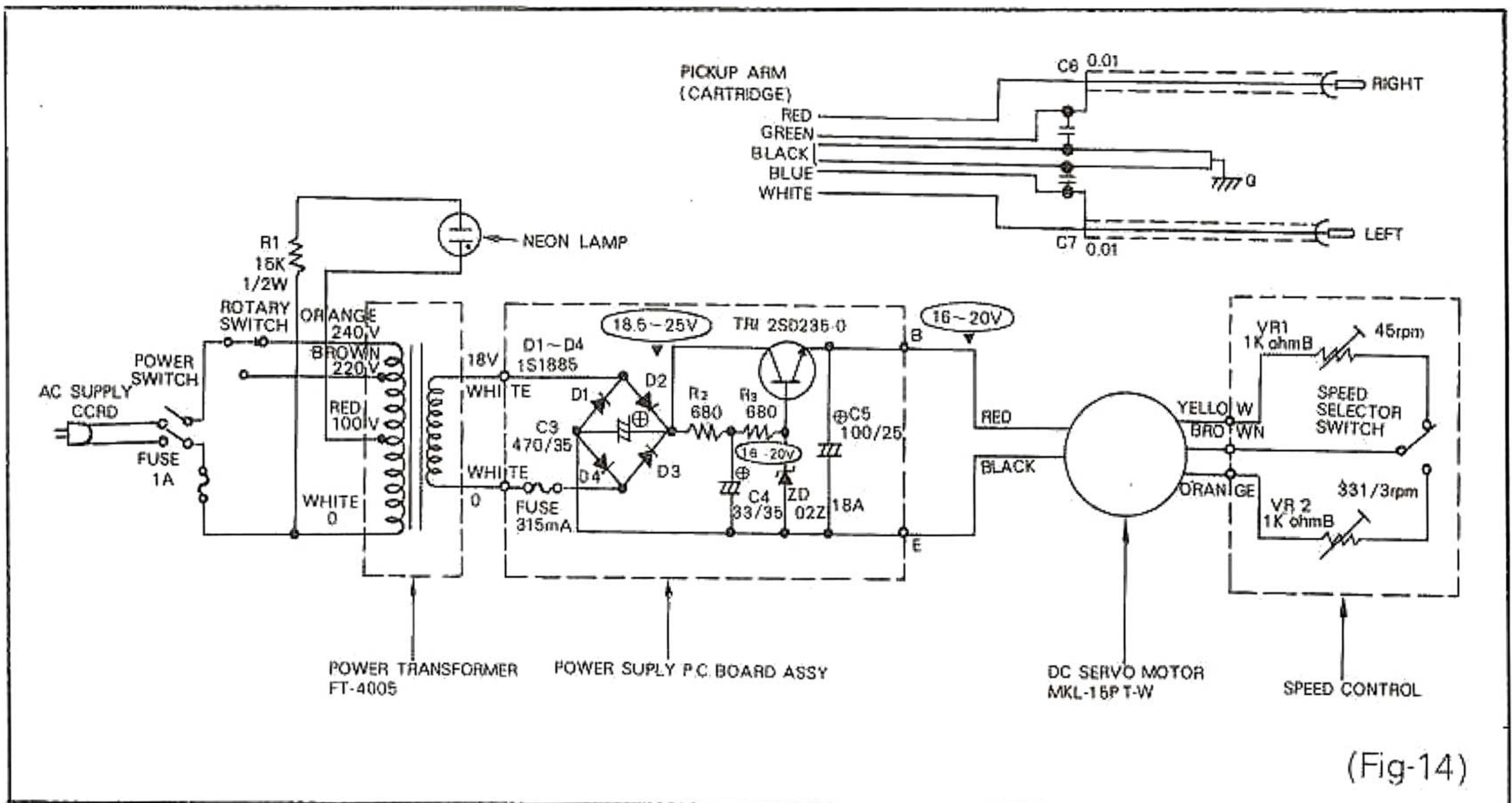
6. SCHEMATIC DIAGRAM

A. UL,CSA



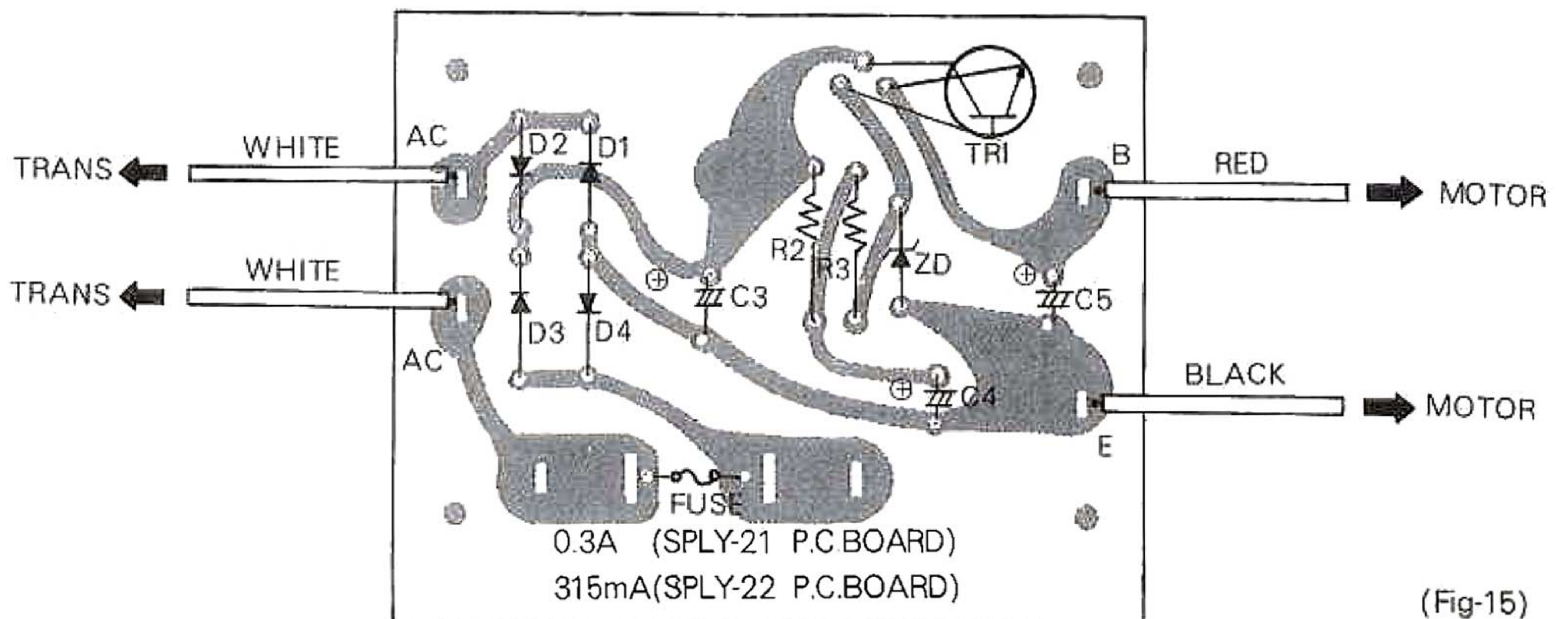
(Fig-13)

B. Europe and Australia



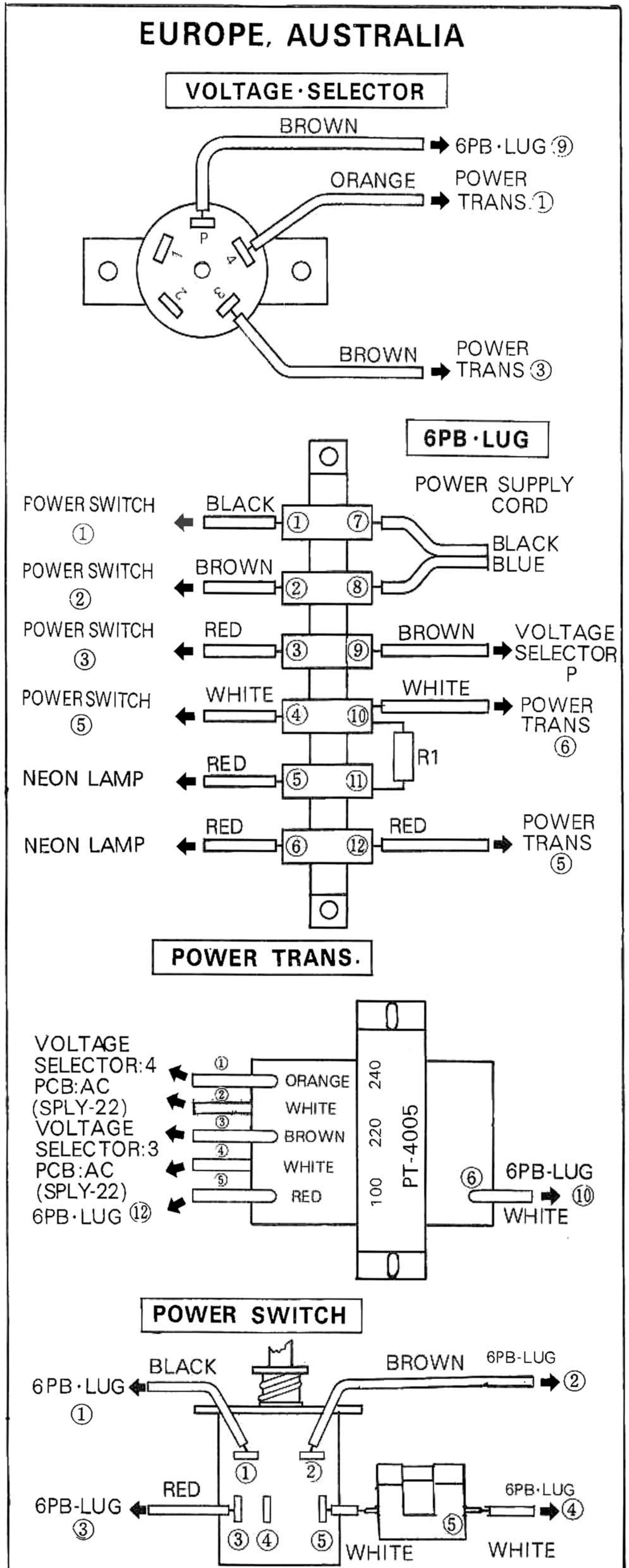
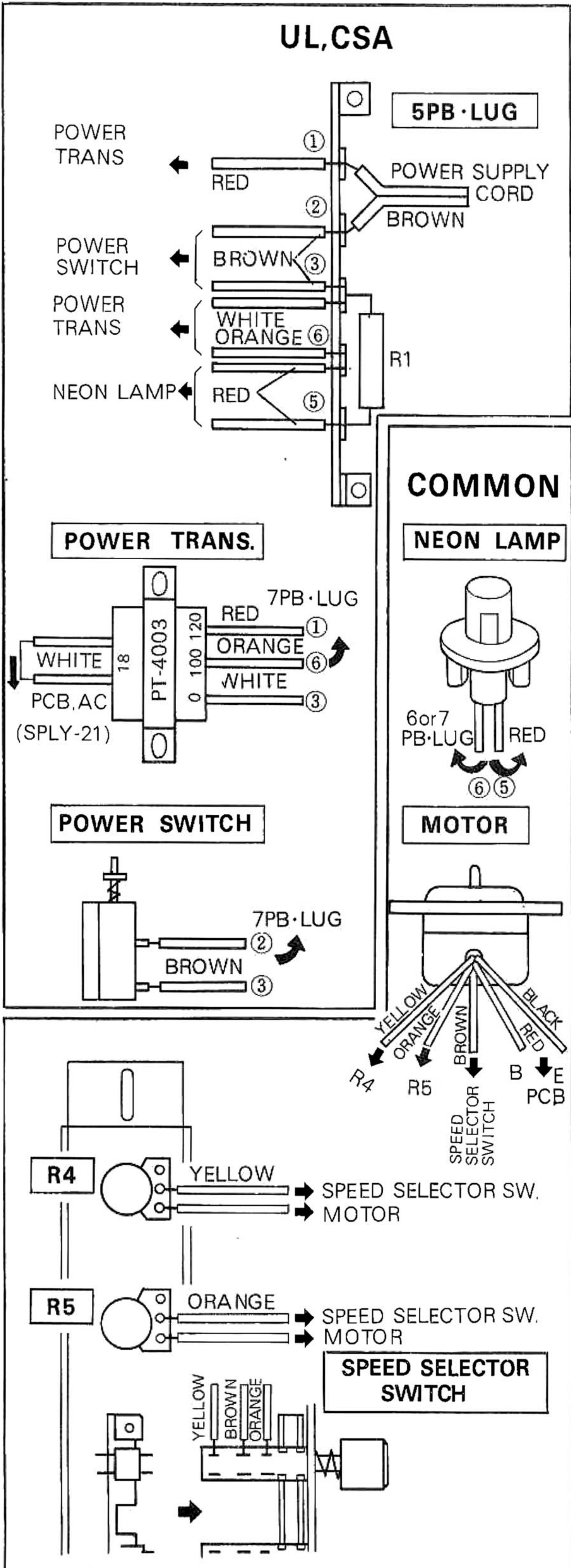
(Fig-14)

7. BOTTOM VIEW OF POWER SUPPLY P.C.BOARD



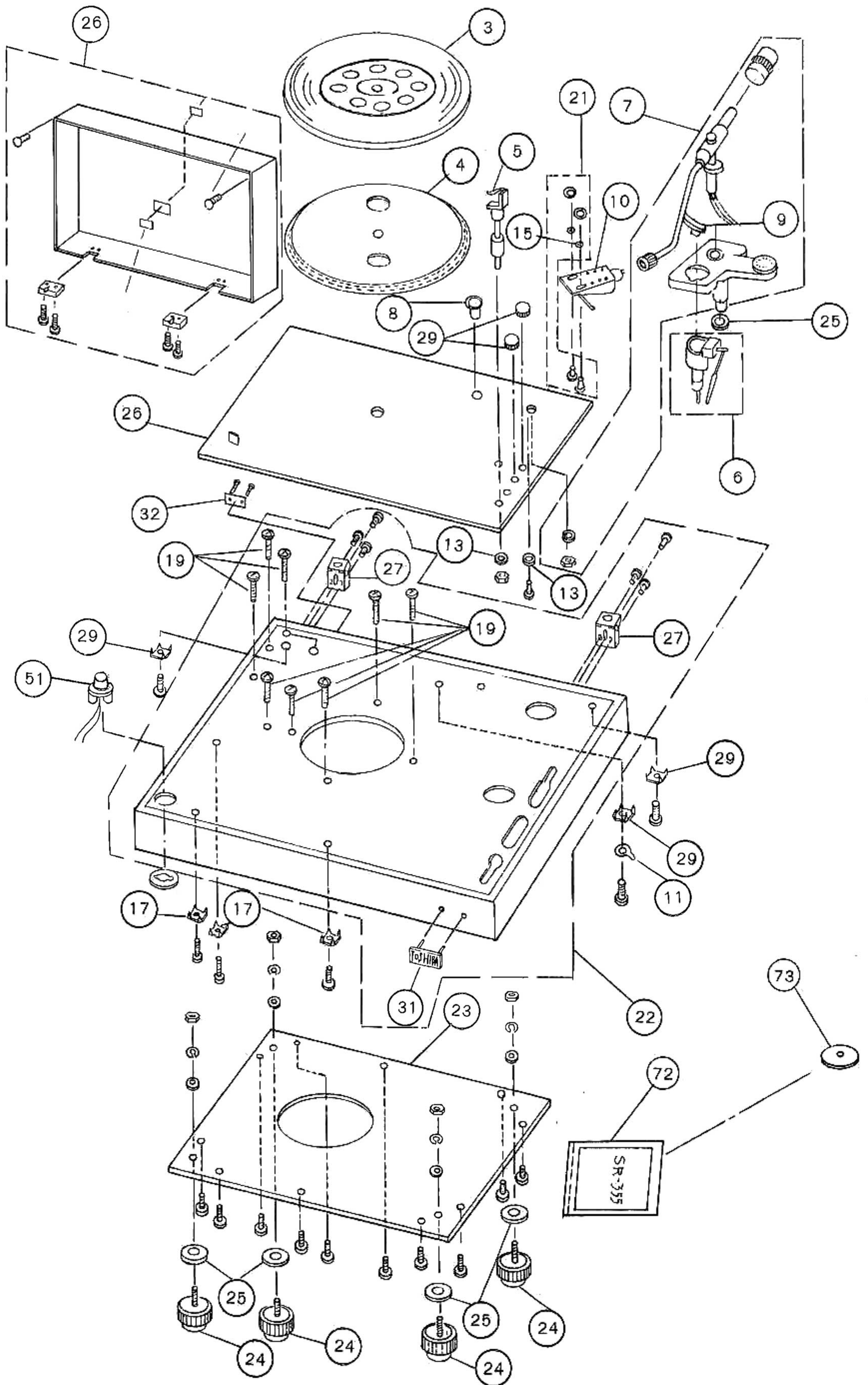
(Fig-15)

8. SEVERAL PARTS CONNECTIONS

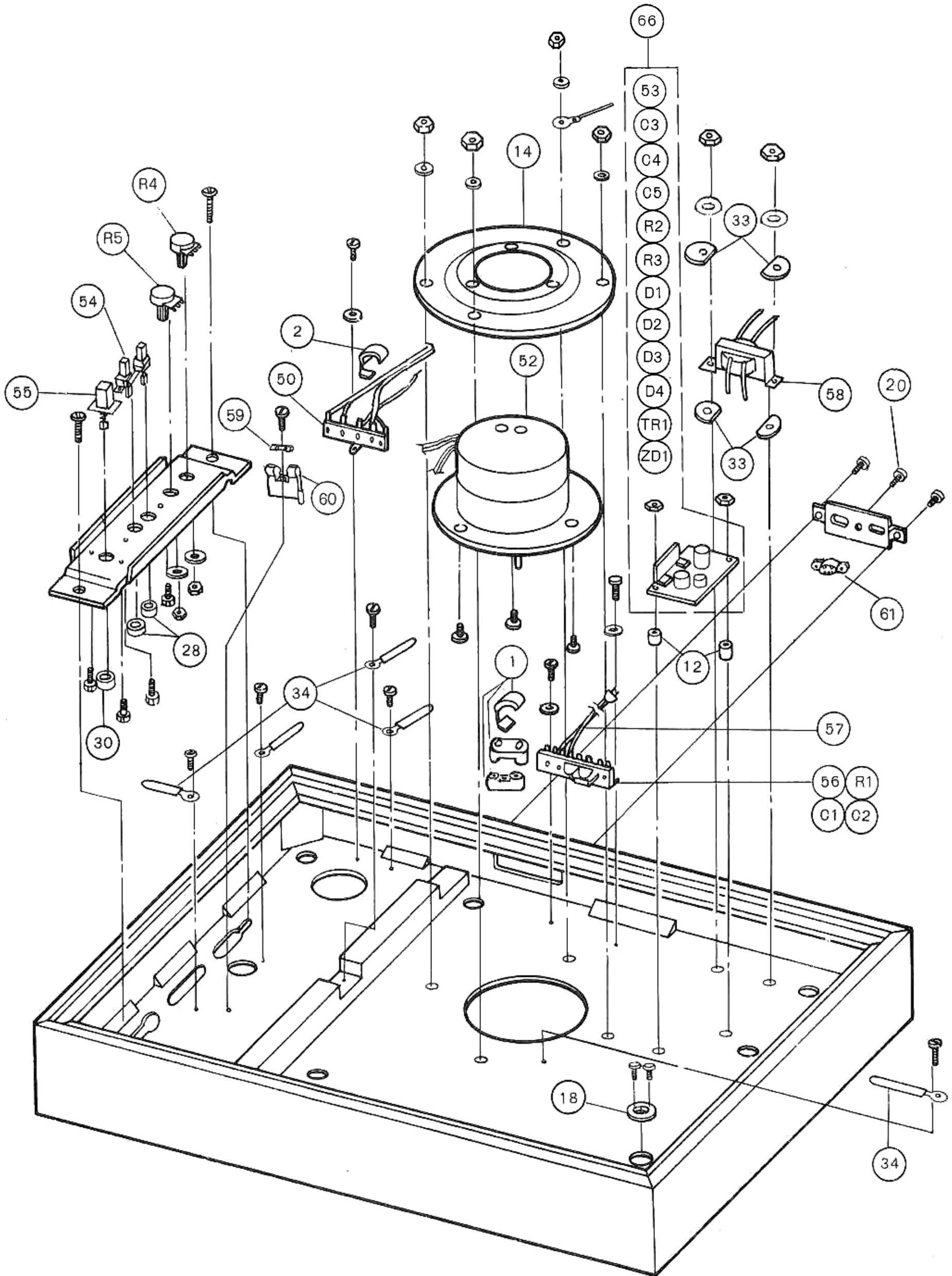


9. EXPLODED VIEW

PLAYER. I



PLAYER. II



10. PARTS LIST

Symbol No.	Part No.	Description	Remarks	Symbol No.	Part No.	Description	Remarks
TRANSISTOR & DIODE				MECHANICAL PARTS			
TR1		Transistor, Power(2SD235-0)		1	20021170	Bushing, Power cord	For UL, CSA
D1, D2, D3, D4		Diode, Silicon(1S1885)		1	22184117	Cord clamp	For Europe, Australia
ZD		Diode, Zener(02Z18A)		2	20022018	Bushing	
CAPACITORS				3	20723037	Table sheet	For UL, CSA
C1, C2	22340073	Ceramic, (0.01mfd)	For UL	3	20723030	Table sheet- assembly	For Europe, Australia
C1, C2	22340074	Ceramic, (0.01mfd250VAC)	For CSA	4	20723040	Turntable	
C3	2244747103	Electrolytic, (47Cmfd35WV)		5	20731052	Stand, Pick-up	
C4	2244733003	Electrolytic, (33mfd35WV)		6	20731123	Lift assembly	
C5	2244610103	Electrolytic, (100mfd25WV)		7	20731125	Pick-up arm assembly	
RESISTORS				8	20735032	Shell stand	
R1	22563153	Composition, (15Kohm, 2/1W)		9	20735034	Base assembly	
R2, R3	22546681	Carbon film, (680ohm, 1/4W)		10	20736033	Head shell	For UL, CSA
R4, R5	22622015	Resistor, Variable(1KohmB)		10	20736032	Head shell	For Europe, Australia
UNIT				11	20746043	Bracket	
66	22138064	Power Supply P.C.Board Ass'y	For UL, CSA	12	20773100	Collor	
66	22138065	Power Supply P.C.Board Ass'y	For Europe, Australia	13	20776028	Spacer	
ELECTRICAL PARTS				15	20791077	Washer	
50	20786022	Wire, Shielded(Plug, USpin)		17	20791091	Washer	
51	20786073	Lamp, Neon assembly		18	20791093	Washer	
52	22125308	Motor, DC		19	20794041	Screw	
53	22144271	Fuse, UL recognized(0.3A)	For UL, CSA	20	20794065	Screw	For UL, CSA
53	22144275	Fuse, Cartridge(0.315A)	For Europe, Australia	21	20794121	Screw assembly	
54	22146076	Switch, Push(Speed selector)		22	20811273	Player cabinet assembly	For UL, CSA
55	22146080	Switch, push(Power ON/OFF)	For UL, CSA	22	20811289	Player cabinet assembly	For Europe, Australia
55	22146088	Switch, Push(Power ON/OFF)	For Europe, Australia	23	20828291	Back board	For UL, CSA
56	22161404	Strips, Lug type(L7P)	For UL, CSA	23	20828295	Back board	For Europe, Australia
56	22161416	6PB · Lug	For Europe, Australia	24	20842056	Leg assembly	
57	22176221	Cord, power supply	For UL, CSA	25	20844096	Spacer	
57	22176224	Cord, Power supply	For Europe	26	20847059	Dust cover assembly	
57	22176489	Cord, Power supply	For Australia	27	20861059	Hinge(for Cabinet)	
58	22213457	Transformer, Power(PT-4003)	For UL, CSA	28	20871198	Knob(Speed selector)	
58	22213465	Transformer, Power(PT-4005)	For Europe, Australia	29	20871222	Knob(Speed adjusting)	
59	22144274	Fuse, Cartridge(1A)	For Europe, Australia	30	20871240	Knob(Power ON/OFF)	
60	22165074	Fuse holder	For Europe, Australia	31	20875102	Mark(TOSHIBA)	
61	22146087	Switch, Rotary(220/240V)	For Europe, Australia	32	20877142	Name plate	For UL
				32	20877143	Name plate	For CSA
				32	20877137	Name plate	For Europe, Australia
				33	20881152	Cushion	
				34	22184145	Cord clamp	
				ACCESSORIES			
				72	20951236	Insturction Book	For UL, CSA
				72	20951248	Instruction Book	For Europe, Australia
				73	20971046	Adaptor, 45	



TOSHIBA

MANUFACTURED BY

TOKYO SHIBAURA ELECTRIC CO., LTD.

2-1, GINZA 5 CHOME, CHUO-KU, TOKYO 104, JAPAN

CABLE: TOSHIBAGNZ TOKYO, TELEX NO.: J24681, J24682, J24683

PART NO 20951251 JULY '75 PRINTED IN JAPAN