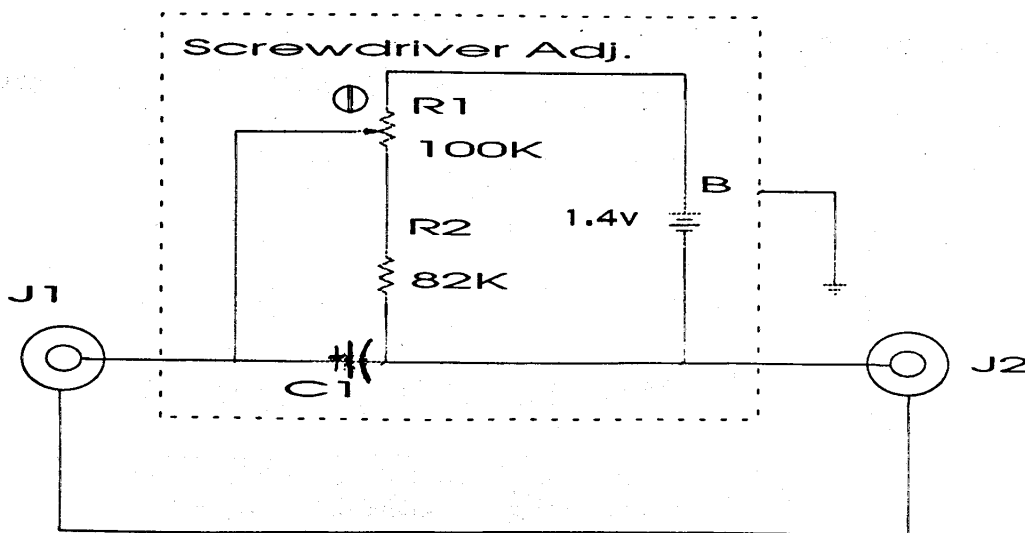


BILL OF MATERIALS			
No Req	MFGR & PART No	DESCRIPTION	I.D.
1	OHMITE CLU1041 or Equiv	Potentiometer 100K, Linear	R1
1		Resistor 82K, 5%, 1/2 W	R2
1	HOLLAND 111 or Equiv	Capacitor 100mF/25V	C1
1	EVEREADY E-9 or Equiv	Penlight Mercury Neda 15M, 1.4V	B
1	KEYSTONE 139 or Equiv	Battery Holder (For B)	
2	SWITCHCRAFT 3501FP orEquiv	Phono Jacks	J1, J2
1	OLSON ELECTRONICS CA - 356 or Equiv	Plastic Box W/Aluminum Cover (See Notes 1&2)	
1	UREI B-10826	Shield	
4		Double Stick Tape	
2		4-40x3/16" BHMS	

Voltage at J1 or J2 will read from 0 to approximately 1Vdc. Adjust R1 until meter in GR mode reads the same. If meter will not equal switch leads at J2 & J1.



INSTALLATION INSTRUCTIONS

UREI 1176 SA

STEREO ADAPTER

The 1176 SA Stereo Adapter is used to couple two UREI Model 1176 LN Limiting Amplifiers, to permit equal gain reduction in both channels of a stereo transmission when a peak occurs in either channel. Complete audio isolation is maintained between the two channels. This type of limiting is desirable in stereo FM broadcasting to prevent transmitter over modulation without shifting the aural placement of point source sounds.

MOUNTING INSTRUCTIONS

The two 1176 LN Limiters which are to be coupled for stereo operation should preferably be mounted in immediately adjacent locations in rack or enclosure. If they must be separated, longer coupling cables of a type similar to those furnished with the 1176 SA will have to be provided.

The 1176 SA can be affixed to the rear of the chassis of either 1176 LN (or to any other adjacent flat, smooth surface) by means of the pressure-sensitive adhesive on the back of the adapter. A suggested location is in the rear center of the 1176 LN, directly above the words "United Recording Electronics Industries".

- A. Remove green protective paper from adhesive by inserting fingernail under one corner. Do not touch adhesive with fingers, as oil will adversely affect its bonding ability.
- B. Locate the Adapter box carefully over the area where it is to be mounted, then press the adapter firmly to the surface. This must be done accurately, for the position of the 1176 SA cannot be changed after contact without destroying the adhesive coating.
- C. Insert one end of each of the two shielded cables into the jacks on the Adapter, seating the connectors securely. Connect the other ends to the two limiters by inserting the connectors into the jacks marked "1176 SA" on the extreme right rear of the chassis.
- D. Follow the calibration procedure outlined in the 1176 LN Limiting Amplifier instruction manual.

The NEDA 15M mercury cell installed in the 1176 SA at the factory provides a reference bias only, and should last the shelf life of the battery, which is approximately 18 months. We suggest, however, that as part of your preventive maintenance a fresh cell be installed every six to nine months.

To replace the cell, remove the front plate assembly from the 1176 SA by removing the four Phillips screws. Observe correct polarity when inserting the fresh cell. Replace assembly and re balance the system with reference to the Limiter Instruction Manual.

JBL PROFESSIONAL
8500 BALBOA BOULEVARD
NORTHRIDGE, CALIFORNIA 91329