

SERVICE MANUAL

ULD - 15 / 18

System Specifications:

<u>Amplifier:</u>	<u>ULD - 18</u>	<u>ULD - 15</u>
Type:	High efficiency Discreet Class B	High Efficiency Discreet Class B
Power:	400 Watts cont. RMS	400 Watts cont. RMS
Input Sensitivity/ Impedance:	300mv/20k ohms	300mv/20k ohms
Frequency Response: -3dB	18 - 85Hz, +/-3dB 13 Hz	18 - 85 Hz, +/-3dB 14 Hz
Crossover: High Pass	Modular Active 85Hz; 12dB Per Octave	Modular Active 85Hz; 12dB Per Octave
Low Pass	Modular Active 85Hz; 12dB Per Octave	Modular Active 85Hz; 12dB Per Octave
Protection:	Open / Short Circuit Excessive Signal, Low Line.	Open / Short Circuit Excessive Signal, Low Line.
Dimensions:	17 x 12 x 4 (LWH)	17 x 12 x 4 (LWH)
Weight:	15 lbs.	15 lbs.
<u>Driver:</u>		
Linear Travel:	3/4 inches	5/8 inches
Voice Coil:	Edgewound Copper 3"	Edgewound Copper 3"
Magnet:	216 Oz.	216 Oz.
Cone:	Resin Impregnated Fiber.	Resin Impregnated Fiber.
Driver Resonant Freq. :	< 4 Hz	< 4 Hz
Max Distortion: (20 Hz & 104 dB)	< .5 %	< .5 %
<u>Servo Feedback Loop:</u>		
Loop Gain:	30dB	30dB
Accelerometer:	Piezo w/ integral amp.	Piezo w/integral amp.

Cabinet:

Finish:	Black Wood Grain, Oak and Walnut.	Black Wood Grain, Oak and Walnut.
Dimensions:	31" x 23 1/2" x 21 1/2"	22 1/2" x 17" x 18 1/2"
Weight:	105 lbs.	90 lbs.
Volume:	9976 cubic inches.	4313 cubic inches.

System Operation

The ULD - 15 / 18 Subwoofer system is a 2 piece downward firing subwoofer system consisting of a separate servo controller / amplifier and a sealed cabinet which houses the 15 or 18 inch driver and servo interface. The system is designed to operate with line level inputs, which can be made to either a pre-amp, tape loop, line level crossover, or signal line level outputs. The connections to and from the ULD servo controller can be made with any shielded phono cables, with connection back to the main system being required in order to provide the output of the internal high pass filter to the main system amplifier. The connection to the Velodyne driver can be made with the same quality cable that would normally be used for any standard speaker hook-up. The servo connection between the Velodyne amp and driver is made with a single RCA cable. The Velodyne will reproduce those frequencies below the set low-pass crossover point and will pass all frequencies above the set high-pass point out to the satellite speakers. The factory set default frequency for the crossover high and low-pass is 85 Hz. The level control on the ULD servo controller is a sensitivity adjustment used to set a relative level between the satellite speakers and the Velodyne unit, once this level is properly set very little if any adjustment should be required. The only notable exception to this rule occurs when the servo controller is connected to the system via the tape monitor loop, in which case the level control on the servo-controller will need to be adjusted every time the system volume is adjusted; this occurs because the tape loop level is fixed and unaffected by changes in the overall system level.

Component Removal

Amp: Access to the amplifier assembly is gained by removing the ten screws which secure the top cover of the unit. The main PC board of the amplifier is secured to the chassis by three screws which run through the back of the unit, along with three plastic standoffs that protrude through the the bottom of the chassis. Prior to removing the mother board the two molex connectors processor located at the rear of the board must be removed along with the red & black speaker leads as well as the transformer leads. The volume pot is removed by pulling the knob off and then removing the captive nut and star washer which secure the pot to the chassis.

Service technicians should pay special attention to the location of all the transformer leads and mark them since some mother boards are not marked or color coded.

Driver: Access to the driver and sender board can be gained by removing the eight screws around the perimeter of the driver and the four screws around the terminal plate. In some instances it may be necessary to pry the driver out of the cabinet with a screwdriver; the driver and the terminal plate will then come out as a unit with the wires connected between them. Do not under any circumstances cut these wires in order to remove these components.

Board identification

Sender board: The sender board is the board that resides within the subwoofer cabinet at the point where the servo and speaker wires from the servo controller connect. This board is responsible for amplifying the accelerometer signal from the driver and transmitting it to the amplifier via the servo cable.

Output boards: The output boards are the boards that are attached to the heat sink assemblies at either side of the amplifier assembly. The output boards provide final signal amplification of the output signal prior to the driver. The aluminum bracket that the power transistors are bolted to is isolated from chassis ground via a layer of thermal compound and a thin sheet of non-conductive paper. The red and black wires attached to the boards designate the polarity of the output signal, red is positive (+65Vdc), black is negative (-65Vdc).

Preamp board: The preamp board is located on the left side of the mother board and can be identified by the four transistors that are at the top rear edge of the board. Each of the transistors has a large machine screw that runs through it for heat sinking. The preamp board is responsible for setting the bias current to the output transistors, splitting the signal into its positive and negative components, and sending the signal to the output boards.

Crossover board: The crossover board is the board located on the rear of the amp mother board, parallel to the front and rear panel. The crossover board is the one that has the volume pot and crossover module attached to it. It is responsible for setting the low and high pass crossover points as well as the level of the incoming signal. The crossover board is the only circuit that the signal out of the Velodyne controller passes through, service technicians can safely assume that any noise detected at the satellite speakers can be eliminated through the repair of this board. Refer to the inserts on the modification of the ULD crossover for information on selecting the proper resistor values to alter the high and low pass crossover frequencies.

Gain compressor board: The gain compressor board is located on the extreme left edge of the mother board. It is easily identified by the two adjustable pots located at the top of the board. These two pots VR1 & VR2 are responsible for setting the maximum gain at 20Hz and 100Hz respectively.

Loop board: The loop board is the next board in from the gain compressor board. It is responsible for amplifying the signal and summing the feedback signal with the incoming signal.

Comparator board: The comparator board is the second board in from the gain compressor board. It can be identified by the transistor that is located at the top rear edge of the board close to the crossover board. The comparator board is responsible for changing the current signal from the accelerometer into an AC voltage signal and for turning on the amplifier. This board monitors several signals and when all these signals are present it then energizes the bias circuit for the output transistors on the preamp board.

Schematic Overview

Signals enter the ULD amplifier through the RCA input jacks located on the rear panel. The signal goes directly to the Crossover Board where it is crossed over and the higher frequencies are routed back out to the satellite speakers via the power amp. From the crossover board the low frequency signal is routed to the Loop Board where it is amplified by the first op amp of IC U7 (LM348). The output of that circuit is routed to the Gain Compressor Board where it is evaluated and sets IC U3 (NE572, a programmable analog compander) which acts as a variable feedback resistor for the following gain stage on the Loop Board. The third op amp on the Loop Board is a filter and the fourth op amp is the summing point for the music signal and the accelerometer signal. The resulting signal when summed is what provides the error correction necessary to make the driver accurately reproduce the input signal. The accelerometer signal originates at the Piezo Element which is mounted on the driver voice coil. The signal starts as an AC signal and is routed from the driver out to the Sender Board via the 4 conductor black ribbon cable. Once at the Sender Board IC U1 (NE5534) and TR2 (2N3904) combine to change the signal from an analog AC signal into modulated current, which is then transmitted through the RCA cable up to the amplifier. Once in the amplifier this signal is routed to the Comparator Board where it passes through IC U8 (NE5534) and is converted back to an AC signal. It is at that point that the signal is routed to the loop board via pin J7-1 and onto IC U7 pin 9 (inverting input of the fourth op amp). The summed signal travels out of the Loop Board and on to the Preamp Board via a twisted pair wire set. Once the signal arrives at the Preamp Board it gets split into its positive and negative components and sent out to the Output Boards, where it gets amplified and passed out to the driver via the banana plugs on the rear. One additional function of the Comparator Board is to provide the turn on circuit for the amplifier. It accomplishes this by controlling the transistor bias circuit located on the Preamp Board. By monitoring various voltages with IC's U5 & U6 (Lm339's) the Comparator Board is capable of preventing the amp from turning on when any of the required inputs is missing.

System Calibration

Proper calibration of the amp and driver is essential to ensure correct operation of the system. Calibration of the system involves setting the accelerometer feedback level to the amplifier and the setting of the gain compression circuits in the amp. Driver or accelerometer calibration is performed by adjusting the pot located on the sender board. The pot is accessed through the large screw in the metal terminal plate on the underside of the subwoofer cabinet, just to the right of the servo RCA jack. To calibrate the unit, set the signal generator output to 100 HZ at a level of .8 Vrms. Turn the two pots on the Gain Compressor Board VR1 & VR2 fully clockwise. Turn the amplifier Volume Pot until you have 20V P-P output at the banana plugs on the rear of the amplifier. Measure the feedback signal from the accelerometer at Pin J6 - 5 on the Comparator Board, verify .40 V peak to peak. If this signal measures less than .40V p-p re-adjust the sender board pot until the proper signal level is achieved. Repeat this operation until the proper levels are achieved throughout. The driver must be sealed in the cabinet during this entire process.

System Test Points

All test point values are measured using a .8 Vrms, 100 Hz input signal into either of the Line level input jacks. The speaker must be connected to the amp and installed into a sealed cabinet, calibrated and both Gain Compressor Board pots turned completely clockwise. Any distortion heard is actually the Gain Compression circuit activating to prevent the driver from bottoming out.

<u>Test Point</u>	<u>Location</u>	<u>Value</u>
TP1	J6 - 1 Comp Pcb.	62 Vdc
TP2	J6 - 6 Comp Pcb.	12 Vdc
TP3	J6 - 4 Comp Pcb.	29 Vdc
TP4	J5 - 2 Comp Pcb.	.1 Vdc
TP5	J5 - 1 Comp Pcb.	0 Vdc
TP6	IC U5 Pin 14, Comp Pcb.	12 Vdc 0 Vdc
TP7	IC U8 Pin 6, Comp Pcb.	1V p-p @ 17.5 Vdc
TP8	J6 - 5 Comp Pcb.	1V p-p max
TP9	IC U7 Pin 1, Loop Pcb.	4.4 V p-p max
TP10	IC U7 Pin 7, Loop Pcb.	4 V p-p max
TP11	IC U7 Pin 8, Loop Pcb.	.3 V p-p max
TP12	Left Heatsink	-30 Vdc
TP13	Right Heatsink	30 Vdc
TP14	Pin 1, Red Output Brd.	30 Vdc
TP15	Pin 2, Red Output Brd.	65 Vdc
TP16	Pin 1, Blk. Output Brd.	-30 Vdc
TP17	Pin 2, Blk. Output Brd.	-65 Vdc
TP18	Red Spkr. Output	50 V p-p @ 20Hz* 60 V p-p @ 100Hz*

* Levels at TP18 are adjustable via Gain Compressor Board pots VR1 and VR2 respectively.

Troubleshooting Common Problems

Symptom

No power

Cure

Make sure RCA cable is good.

Check all five fuses to make sure they are all good.

Check that transformer is not open.

Make sure there is actually no power and not just a bad or unplugged LED by checking both the voltage and the LED connection inside the amp.

Symptom

Driver makes a big slow oscillation.

Unit pops every 3-5 seconds repeatedly.

Cure

Check cabinet for air leaks around the driver and sender board. Tighten the hardware around both if an air leak is detected. If leaks persists reseal with new gasket material.

Check output transistors on both output stages for shorted devices. Usually means there's DC at the output binding posts.

Always attempt to isolate problems to the defective piece by using the suspect piece with a known good unit.

Installation of components

Driver: Make sure the gasket material surrounding the driver opening is not torn and in otherwise good shape prior to the reinstallation of the driver. If that is not the case replace the gasket with new gasket material, and or weather stripping for the ULD - 18. Insert the sender board into the cabinet so that it can be reached through the sender board hole. Reach in and grab the sender board and screw it into place, using the four machine screws. When installing the sender board make sure the red and black terminals match the indicators on the warning label that is affixed to the cabinet. Place the driver into the driver hole making sure to rotate it so as to eliminate any excessive slack in the interconnect wires running between the driver and sender board; now re-secure the driver using the eight machine screws. If the gasket material for a ULD - 18 has been replaced it may be necessary to punch holes into the weather stripping in order to install the screws without interference. Tighten down the screws in a clockwise manner working your way around the driver until all the screws are secured.

Amplifier Mother Board: Place mother board into the chassis assembly so that the RCA jacks and fuse holders fit into their respective holes in the rear panel. Screw the amp board into the chassis with the three machine screws, and align the teflon standoffs on the mother board with the holes on the chassis bottom. Reconnect all transformer wires to the appropriate standoffs following the color markings on the board and reconnect the red and black speaker connectors from the rear panel binding posts; making sure all the connections are tight and secure. Reconnect the Molex connectors from the positive and negative output boards to the main board, all terminals on the mother board are marked to identify the proper color and orientation. Be sure all connections are pushed completely onto the board. Secure the amplifier lid with the ten screws.

Final Checks

Turn on the unit and feed in a 20Hz signal. Check around the perimeter of the driver for air leaks and ticking. When properly calibrated the unit should turn itself off when the volume of the amplifier is turned up beyond the 3 O'clock position, after shutoff return amplifier volume setting to minimum. Change the input signal frequency to 100 Hz and turn the amplifier volume level to full. When properly calibrated the unit should play without clipping or distortion. If the unit fails to do so the unit calibration and gain compressor setting need to be checked and readjusted.

Modification of High and Low Pass Frequencies in the ULD - 15/18

This information is applicable to all ULD - 15/18 controllers with serial numbers prior to 51161007; this includes all units with four digit serial numbers that utilize a single RCA servo connector.

The unit comes equipped with default crossover frequencies of 85 Hz. The High and Low pass frequencies can be altered from the default values by removing a resistor pack from the 14 pin socket on the Crossover Board, and replacing the resistor pack with an IC header which has the resistors that correspond to the desired crossover frequencies soldered to it.

Please refer to the following illustration and text to determine the correct resistor values.

	1	o - - o	14	Shorting Bar
	2	o	o 13	Open
Low Pass	3	o - L - o	12	75K Ohm (Default)
High Pass	4	o - H - o	11	47K Ohm (Default)
High Pass	5	o - H - o	10	47K Ohm (Default)
High Pass	6	o - H - o	9	47K Ohm (Default)
High Pass	7	o - H - o	8	47K Ohm (Default)

The above illustration represents the IC header as seen from above. The shorting bar at the top of the header is for inverting phase, if a 180 degree phase inversion is desired the shorting bar should be placed between pins 2 and 13. Do not short both pins 1 and 14 and pins 2 and 13 at the same time. Such action will result in damage to the crossover board along with lack of output from the subwoofer. The shorting bar should remain unchanged regardless of the crossover frequency.

Determining the resistor values for the remaining five positions on the header can be done by using the following formulas. The Low Pass frequency can be altered by changing the resistor value across pins 3 and 12, the formula for the Low Pass is as follows: $R = 6375 / F$. In the formula R is the value of the resistor measured in K Ohms, and F is the desired crossover frequency. The High Pass frequency can be altered by changing the remaining four resistors on the IC header, the formula for determining the High Pass is as follows: $R = 4000 / F$. Once again in the formula R is the value of the resistor measured in K Ohms, and F is the desired crossover frequency. As an example if someone desired a crossover of 40 Hz installed in their subwoofer it would be obtained by using a 160K Ohm resistor for the Low Pass, "L" position along with four 100 K Ohm resistors in the remaining High Pass, "H" positions.

All four resistors must be changed in order to adjust the High Pass; only the one resistor needs to be changed in order to alter the Low Pass frequency. The High and Low Pass are user definable and can be set to leave either a gap between them or an overlap if room characteristics make that desirable.

Modification of High and Low Pass Frequencies in the ULD - 15/18

This information is applicable to all ULD - 15/18 Series II controllers with serial numbers that are later than 51161007.

The unit comes equipped with default crossover frequencies of 85 Hz. The High and Low pass frequencies can be altered from the default values by removing a resistor pack from the 14 pin socket on the Crossover Board, and replacing the resistor pack with an IC header which has the resistors that correspond to the desired crossover frequencies soldered to it.

Please refer to the following illustration and text to determine the correct resistor values.

	1	o		o	14	47K Ohm
	2	o		o	13	Open
Low Pass	3	o	-L-	o	12	47K Ohm (Default)
High Pass	4	o	-H-	o	11	47K Ohm (Default)
High Pass	5	o	-H-	o	10	47K Ohm (Default)
High Pass	6	o	-H-	o	9	47K Ohm (Default)
High Pass	7	o	-H-	o	8	47K Ohm (Default)

The above illustration represents the IC header as seen from above. The 47K Ohm resistor at the top of the header replaces resistor R - 72 which was omitted from all later revision crossover boards. As with the earlier version of the crossover module the top two rows of pins are for inverting phase. Do not short both pins 1 and 14 and pins 2 and 13 at the same time. Such action will result in damage to the crossover board along with lack of output from the subwoofer. If a 180 degree phase inversion is desired the 47K Ohm resistor should be placed between pins 2 and 13. The value of resistance should remain unchanged regardless of the crossover frequency. Determining the resistor value for the remaining five positions can be calculated by using the following formula: $R = 4000 / F$. In the formula R is the value of the resistor measured in K Ohm, and F is the desired crossover frequency. As an example if someone desired a crossover of 40 Hz installed in their subwoofer it would be obtained by using 100K Ohm resistors in all five positions (Pins 3-12, 4-11, 5-10, 6-9, 7-8).

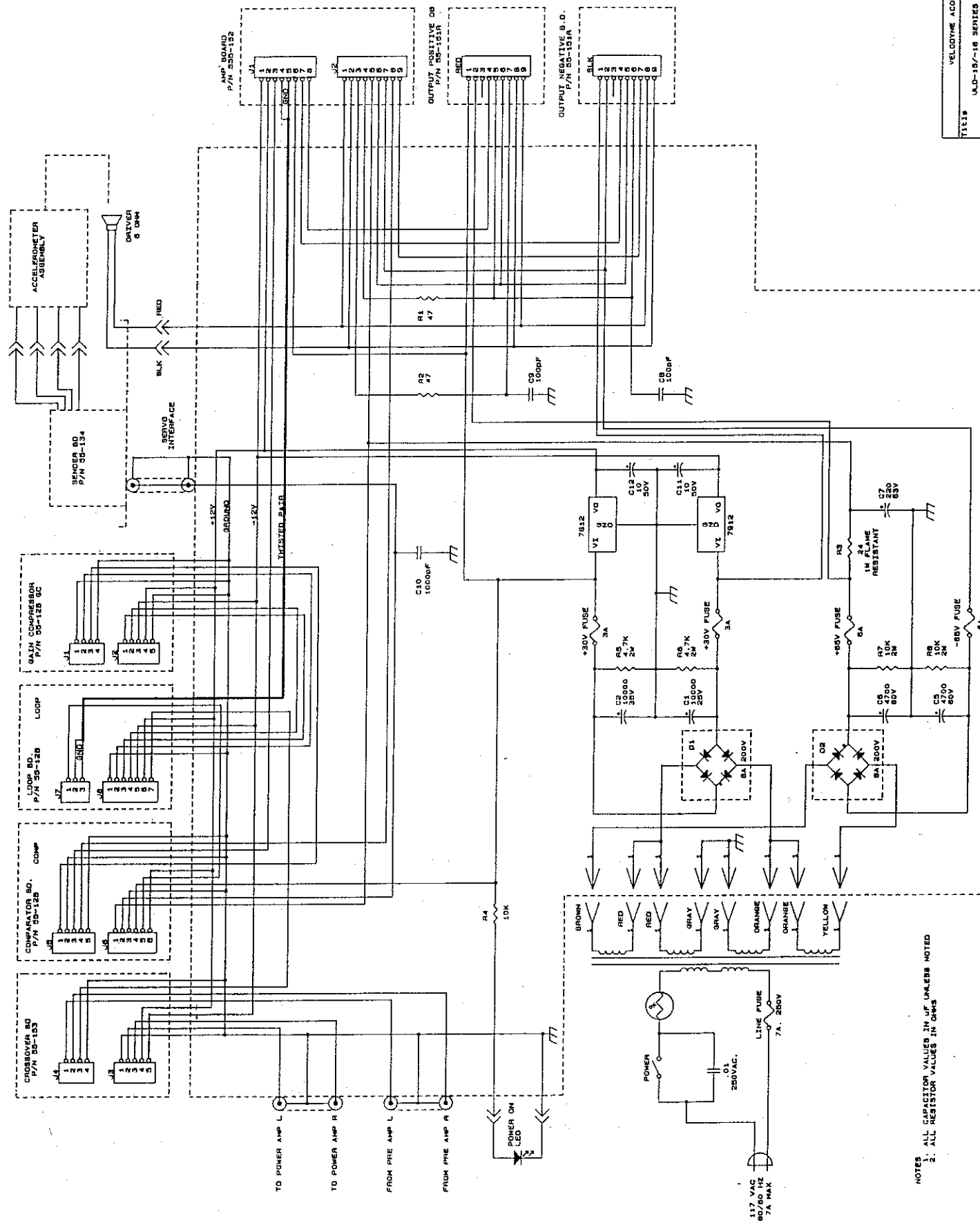
All four resistors must be changed in order to adjust the High Pass; only the one resistor needs to be changed in order to alter the Low Pass frequency. The High and Low Pass are user definable and can be set to leave either a gap between them or an overlap if room characteristics make that desirable.

Eliminating the Low Pass Filter

When one of your customers wants to use a Velodyne ULD -15/18 with an external crossover, the Low - Pass should be raised to value a minimum of 1 octave above the Low Pass frequency employed by the external unit. As an example if someone desired to use a subwoofer output with a 100 Hz Low Pass the Low pass within the Velodyne should be change to 200 Hz by installing a 20K Ohm resistor.

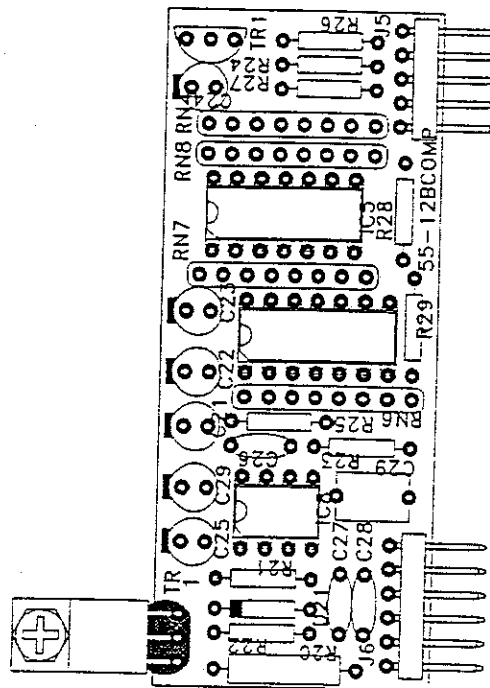
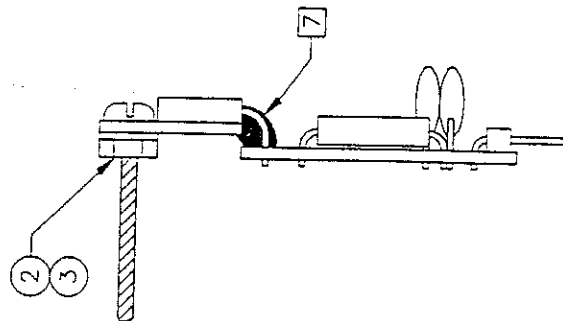
Modification of the ULD - 18 for THX operation.

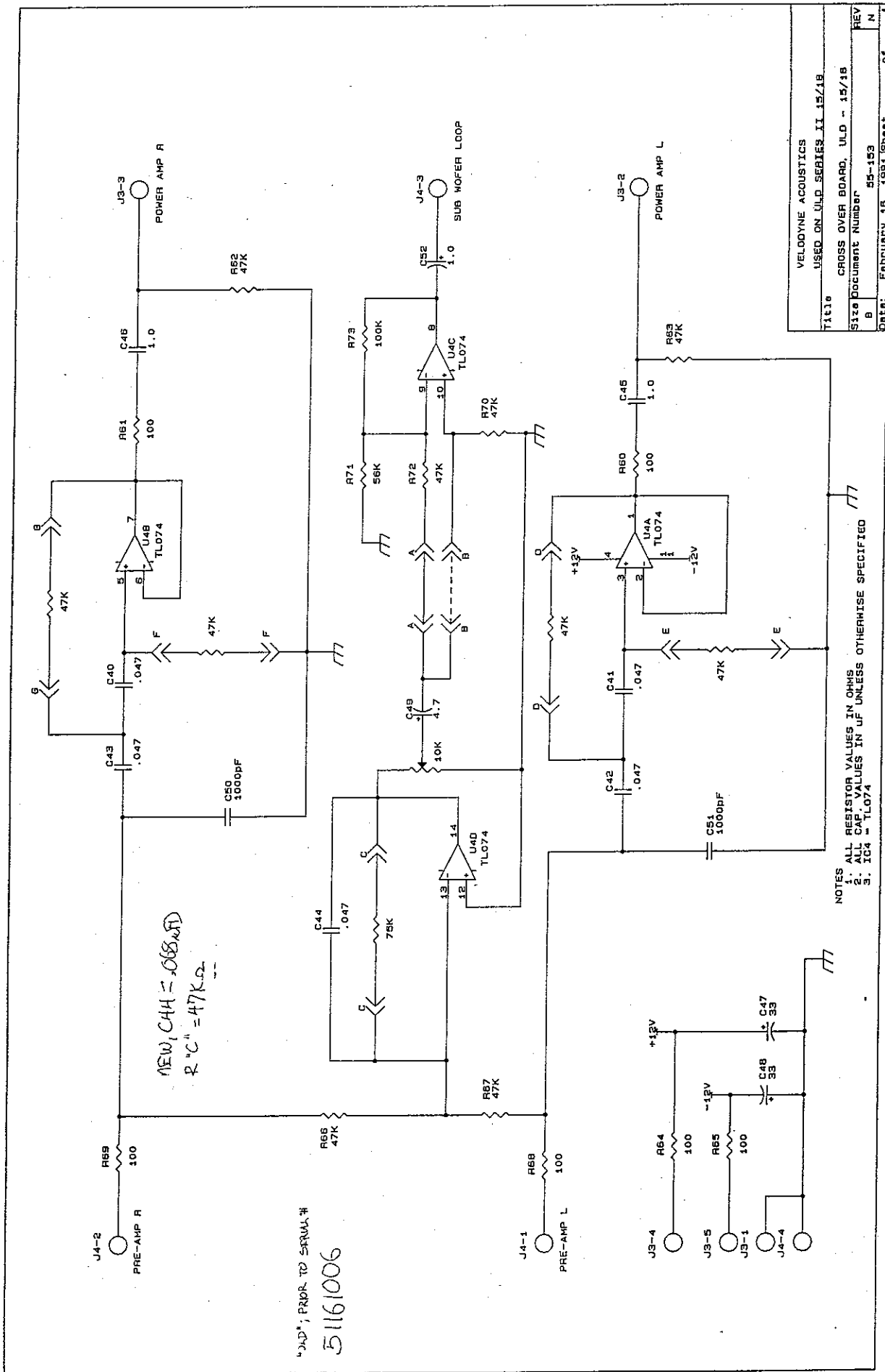
The model ULD -18 Subwoofer is available in a THX certified version for use with other THX certified components. The THX certified version of the ULD - 18 differs from the Non - THX version in two ways. The THX version has no volume pot on the amplifier / controller but is designed to operate at a fixed output level supplied via the subwoofer output port of a THX certified preamp. In addition the THX amplifier is supplied with a modified crossover module (P/N-84-0003) which plugs into the 14 pin socket normally reserved for the default 85 Hz crossover chip. Any ULD - 18 Series II controller can thus be modified to THX specification by the addition of the THX module and omission of the volume pot or vice versa. The function of the THX crossover module is to raise the Low Pass frequency to 200 Hz while maintaining the default 85 Hz High Pass level, while at the same time boosting the signal level at 35 Hz.



NOTES:
 1. ALL CAPACITOR VALUES IN UF UNLESS NOTED
 2. ALL RESISTOR VALUES IN OHMS

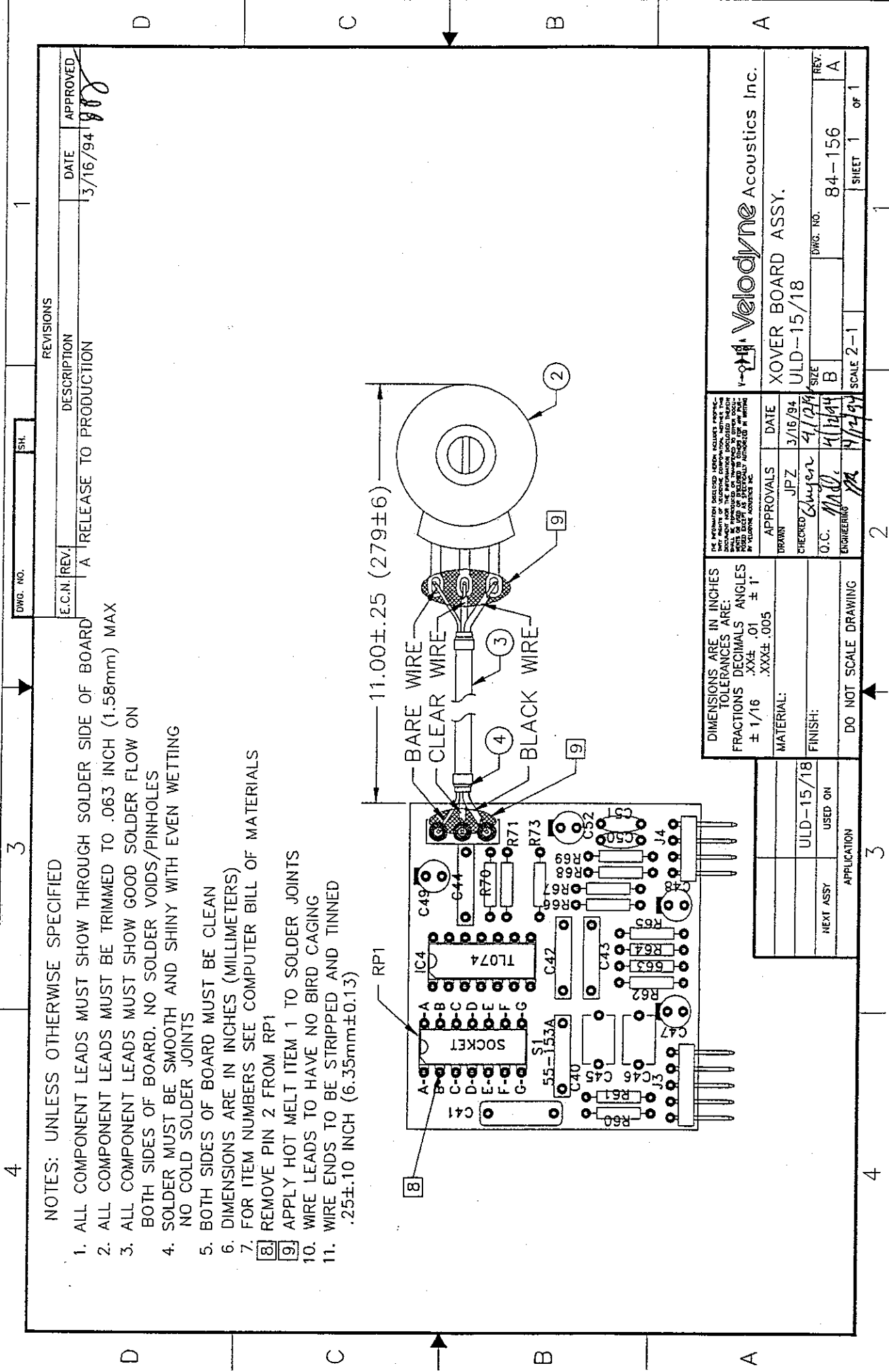
1. ALL COMPONENT LEADS MUST SHOW THROUGH SOLDER SIDE OF BOARD
2. ALL COMPONENT LEADS MUST BE TRIMMED TO .063 INCH (1.58mm) MAX
3. ALL COMPONENT LEADS MUST SHOW GOOD SOLDER FLOW ON BOTH SIDES OF BOARD. NO SOLDER VOIDS/PINHOLES
4. SOLDER MUST BE SMOOTH AND SHINY WITH EVEN WETTING
NO COLD SOLDER JOINTS
5. BOTH SIDES OF BOARD MUST BE CLEAN
6. FOR ITEM NUMBERS SEE COMPUTER BILL OF MATERIALS
7. APPLY HOT MELT ITEM 1 TO TRANSISTOR LEADS

[illegible]



NOTES
 1. ALL RESISTOR VALUES IN OHMS
 2. ALL CAP. VALUES IN uF UNLESS OTHERWISE SPECIFIED
 3. IC4 = TL074

VELOCITYNE ACOUSTICS	
USED ON ULD SERIES II 15/18	
Title	CROSS OVER BOARD, ULD - 15/18
Size	Document Number
B	55-153
REV	N
Date	February 18, 1981
Sheet	of 1



NOTES: UNLESS OTHERWISE SPECIFIED

1. ALL COMPONENT LEADS MUST SHOW THROUGH SOLDER SIDE OF BOARD
2. ALL COMPONENT LEADS MUST BE TRIMMED TO .063 INCH (1.58mm) MAX
3. ALL COMPONENT LEADS MUST SHOW GOOD SOLDER FLOW ON BOTH SIDES OF BOARD. NO SOLDER VOIDS/PINHOLES
4. SOLDER MUST BE SMOOTH AND SHINY WITH EVEN WETTING NO COLD SOLDER JOINTS
5. BOTH SIDES OF BOARD MUST BE CLEAN
6. DIMENSIONS ARE IN INCHES (MILLIMETERS)
7. FOR ITEM NUMBERS SEE COMPUTER BILL OF MATERIALS
8. REMOVE PIN 2 FROM RP1
9. APPLY HOT MELT ITEM 1 TO SOLDER JOINTS
10. WIRE LEADS TO HAVE NO BIRD CAGING
11. WIRE ENDS TO BE STRIPPED AND TINNED .25 \pm .10 INCH (6.35mm \pm 0.13)

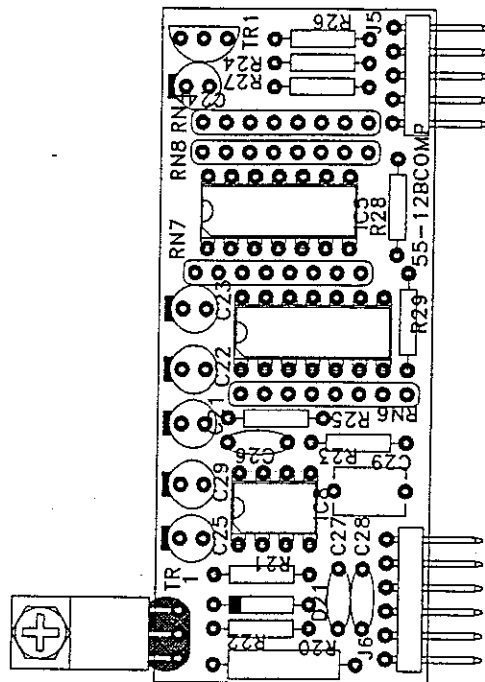
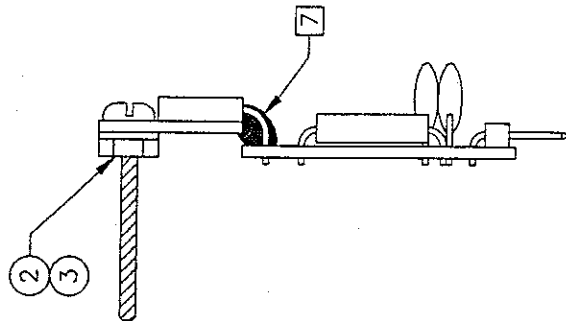
REVISIONS		
E.C.N.	REV.	DESCRIPTION
A	1	RELEASE TO PRODUCTION
DATE		APPROVED
3/16/94		[Signature]

Velodyne Acoustics Inc.	
XOVER BOARD ASSY.	
ULD-15/18	
APPROVALS	DATE
JPZ	3/16/94
CHECKED	4/1/94
O.C.	4/1/94
ENGINEERING	4/1/94
DWG. NO. 84-156	
REV. A	
SCALE 2-1	
SHEET 1 OF 1	

DIMENSIONS ARE IN INCHES	
TOLERANCES ARE:	
FRACTIONS	DECIMALS
$\pm 1/16$.XXX \pm .005
ANGLES $\pm 1^\circ$	
MATERIAL:	
FINISH:	
DO NOT SCALE DRAWING	

APPLICATION	
NEXT ASSY	USED ON
ULD-15/18	

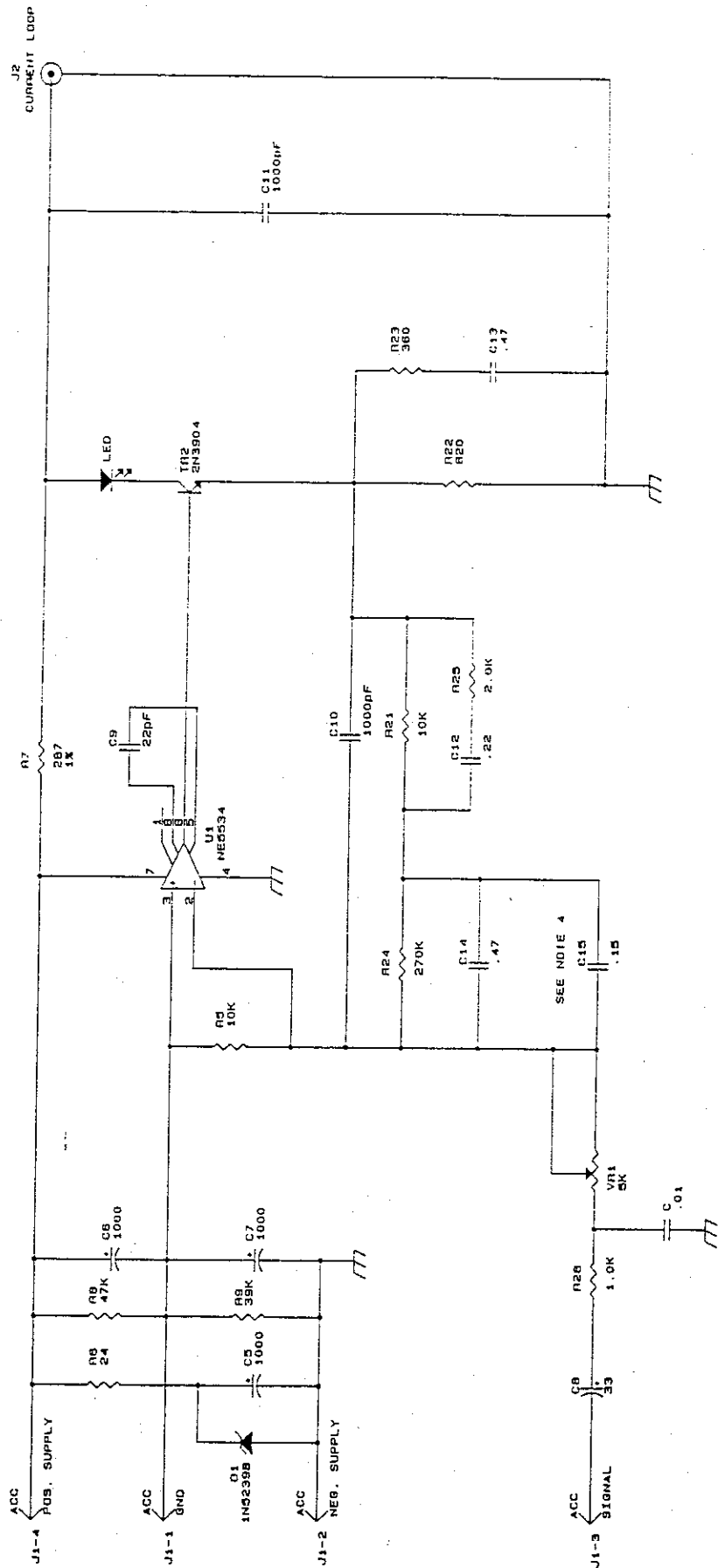
1. ALL COMPONENT LEADS MUST SHOW THROUGH SOLDER SIDE OF BOARD
2. ALL COMPONENT LEADS MUST BE TRIMMED TO .063 INCH (1.58mm) MAX
3. ALL COMPONENT LEADS MUST SHOW GOOD SOLDER FLOW ON BOTH SIDES OF BOARD. NO SOLDER VOIDS/PINHOLES
4. SOLDER MUST BE SMOOTH AND SHINY WITH EVEN WETTING NO COLD SOLDER JOINTS
5. BOTH SIDES OF BOARD MUST BE CLEAN
6. FOR ITEM NUMBERS SEE COMPUTER BILL OF MATERIALS
7. APPLY HOT MELT ITEM 1 TO TRANSISTOR LEADS



DWG. NO.	SH.	REVISONS	
		DESCRIPTION	DATE
		A RELEASE TO PRODUCTION	3/15/94
			APPROVED
			10/17

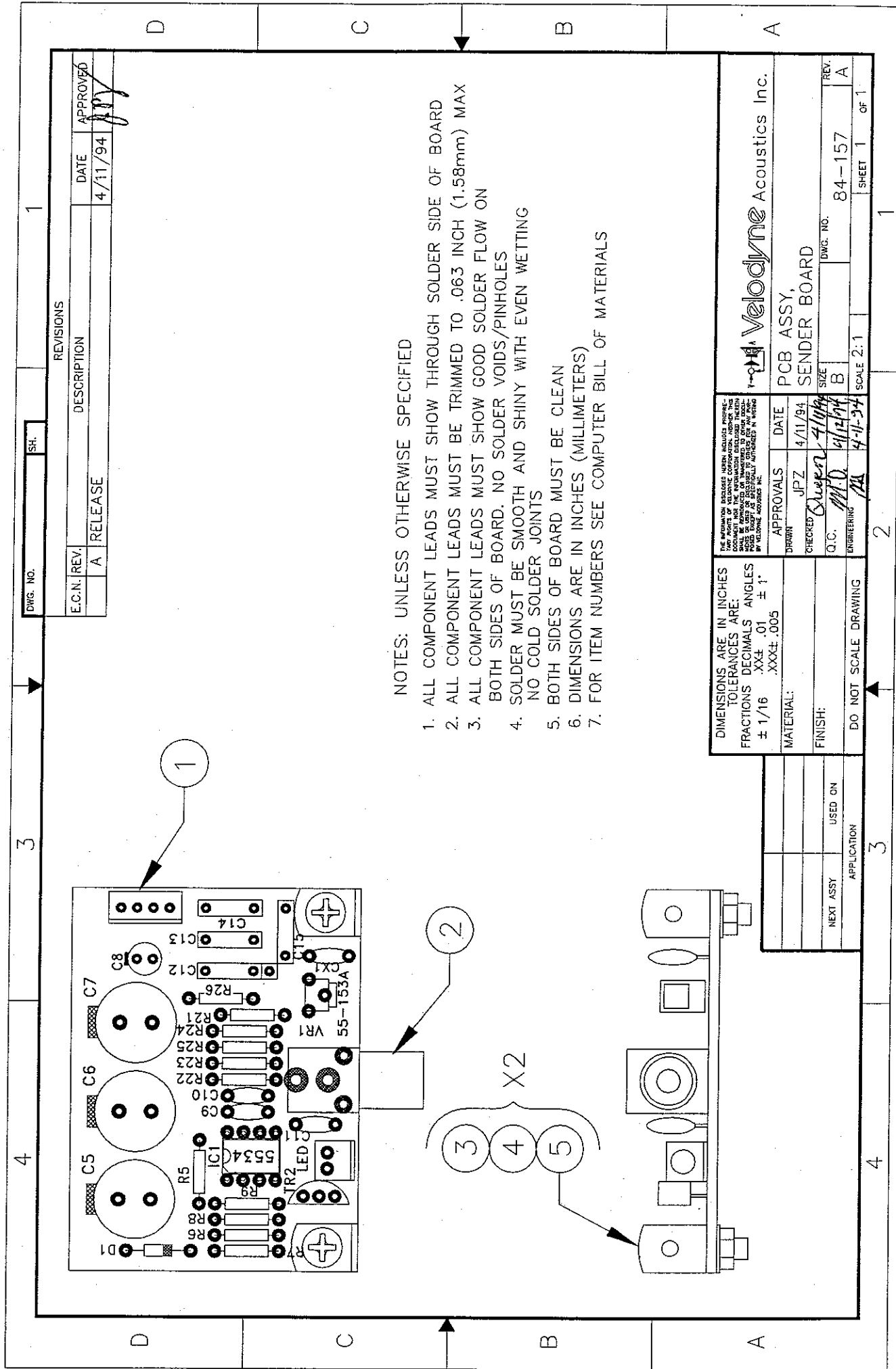
DIMENSIONS ARE IN INCHES TOLERANCES ARE: FRACTIONS DECIMALS ANGLES $\pm 1/16$.XX \pm .01 $\pm 1^\circ$.XXX \pm .005		THE INFORMATION INDICATED HEREIN RELATES EXCLUSIVELY TO THE PARTS OF ALCOINE CORPORATION, WHETHER THE PARTS BE REPRESENTED OR UNREPRESENTED THEREON. NO OTHER RIGHTS OR INTERESTS ARE INTENDED TO BE RESERVED BY ALCOINE CORPORATION IN SUCH CASES AS WHEN THE PARTS ARE REPRODUCED BY OTHERS WITHOUT THE WRITTEN CONSENT OF ALCOINE CORPORATION.		V-2014 Velodyne Acoustics Inc.	
MATERIAL:		APPROVALS	DATE	COMPARATOR BOARD ASSY.	
		UPDOWN	JPZ	ULD-15/18	
FINISH:		CHECKED	4/12/94	SIZE	
		G.C. 11/1/01	4/12/94	B	
DO NOT SCALE DRAWING		ENGINEERING	4-12-94	DWG. NO.	84-12BCOMP
				REV:	A
				SCALE 2-1	SHEET 1 of 1

[illegible]



- NOTES:
1. C16 NOT USED ON ULD 15
 2. U1 - NE5534
 3. ALL CAP VALUES IN UF UNLESS NOTED
 4. ALL RESISTOR VALUES IN OHMS

VELODYNE ACOUSTICS	REV
USED ON ULD SERIES 11 12/10	
Doc. Number	
SENDER BOARD	
Doc. No.	
REV	
DATE: FEBRUARY 10, 1991	

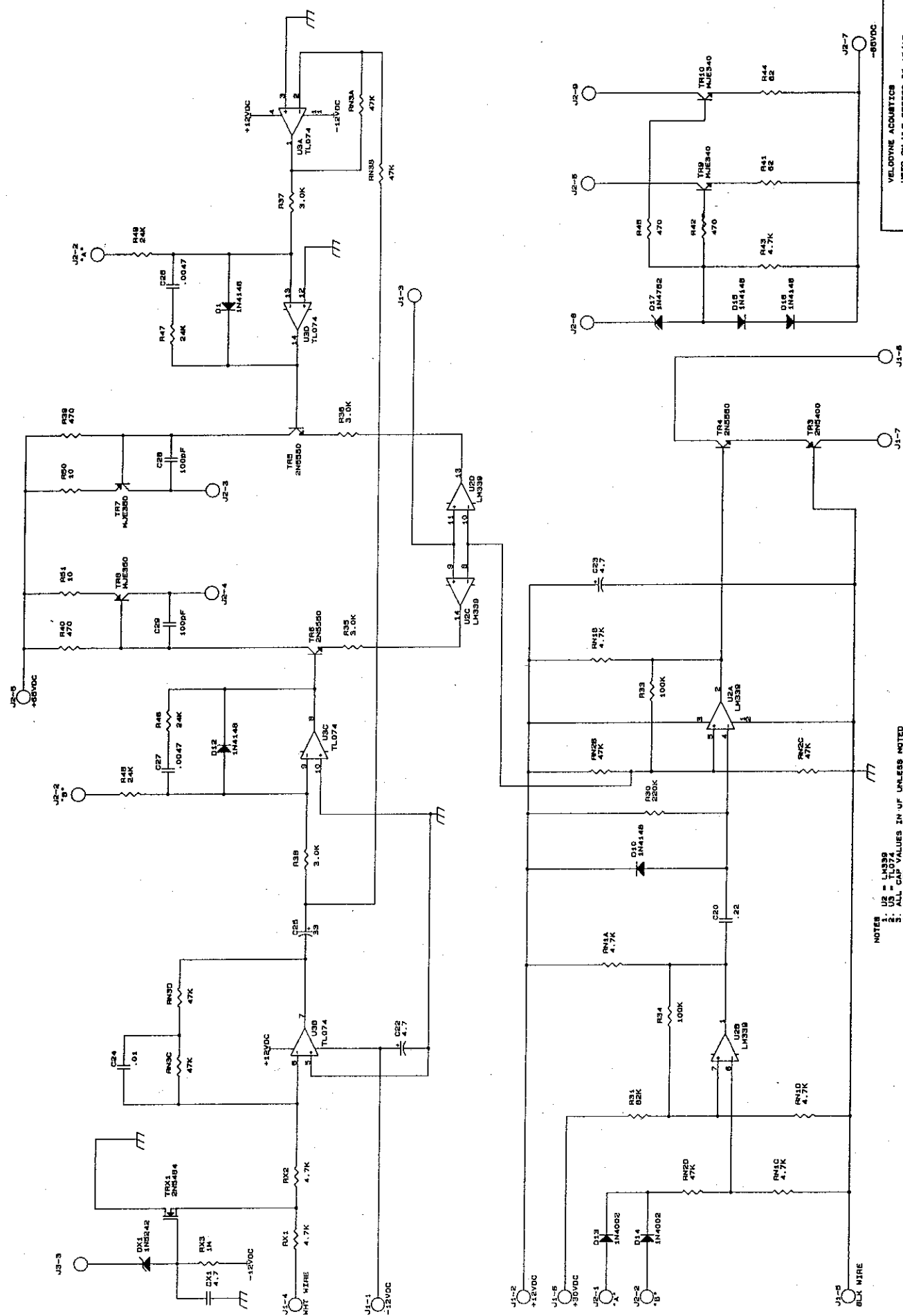


NOTES: UNLESS OTHERWISE SPECIFIED

1. ALL COMPONENT LEADS MUST SHOW THROUGH SOLDER SIDE OF BOARD
2. ALL COMPONENT LEADS MUST BE TRIMMED TO .063 INCH (1.58mm) MAX
3. ALL COMPONENT LEADS MUST SHOW GOOD SOLDER FLOW ON BOTH SIDES OF BOARD. NO SOLDER VOIDS/PINHOLES
4. SOLDER MUST BE SMOOTH AND SHINY WITH EVEN WETTING NO COLD SOLDER JOINTS
5. BOTH SIDES OF BOARD MUST BE CLEAN
6. DIMENSIONS ARE IN INCHES (MILLIMETERS)
7. FOR ITEM NUMBERS SEE COMPUTER BILL OF MATERIALS

THE INFORMATION CONTAINED HEREIN IS UNCLASSIFIED EXCEPT WHERE SHOWN OTHERWISE. IT IS THE PROPERTY OF VELOCITYNE CORPORATION. IT IS TO BE KEPT UNCLASSIFIED AND NOT BE RECLASSIFIED OR DECLASSIFIED. IT IS TO BE KEPT UNCLASSIFIED AND NOT BE RECLASSIFIED OR DECLASSIFIED. IT IS TO BE KEPT UNCLASSIFIED AND NOT BE RECLASSIFIED OR DECLASSIFIED.		APPROVALS		DATE
DESIGN		JPZ		4/11/94
CHECKED		Queen		4/11/94
Q.C.		M.D.		4/12/94
ENGINEERING		PA		4-11-94
DIMENSIONS ARE IN INCHES FRACTIONS DECIMALS ARE: ± 1/16 .XXX ± .005		PCB ASSY, SENDER BOARD		REV. A
MATERIAL:		SIZE B		DWG. NO. 84-157
FINISH:		SCALE 2:1		SHEET 1 OF 1
DO NOT SCALE DRAWING		APPLICATION		
NEXT ASSY		USED ON		

Velocityne Acoustics Inc.



NOTES

1. U2 - L4339
2. U3 - TL074
3. ALL CAP VALUES IN UF UNLESS NOTED
4. ALL RES. VALUES IN OHMS

4

3

DWG. NO. 84-155

SH. 1

1

NOTES: UNLESS OTHERWISE SPECIFIED

1. ALL COMPONENT LEADS MUST SHOW THROUGH SOLDER SIDE OF BOARD
2. ALL COMPONENT LEADS MUST BE TRIMMED TO .063 INCH (1.58mm) MAX
3. ALL COMPONENT LEADS MUST SHOW GOOD SOLDER FLOW ON BOTH SIDES OF BOARD. NO SOLDER VOIDS/PINHOLES
4. SOLDER MUST BE SMOOTH AND SHINY WITH EVEN WETTING NO COLD SOLDER JOINTS
5. BOTH SIDES OF BOARD MUST BE CLEAN
6. FOR ITEM NUMBERS SEE COMPUTER BILL OF MATERIALS
7. PARTS TO BE FLUSH WITH PCB
8. TWIST ITEMS 3 & 4 TWO TWISTS PER INCH
9. WIRE ENDS TO BE STRIPPED AND TINNED .25±.10 INCH (6.35mm±0.13)

REVISIONS

E.C.N.	REV.	DESCRIPTION	DATE	APPROVED
A	RELEASE FOR PRODUCTION		3-9-94	

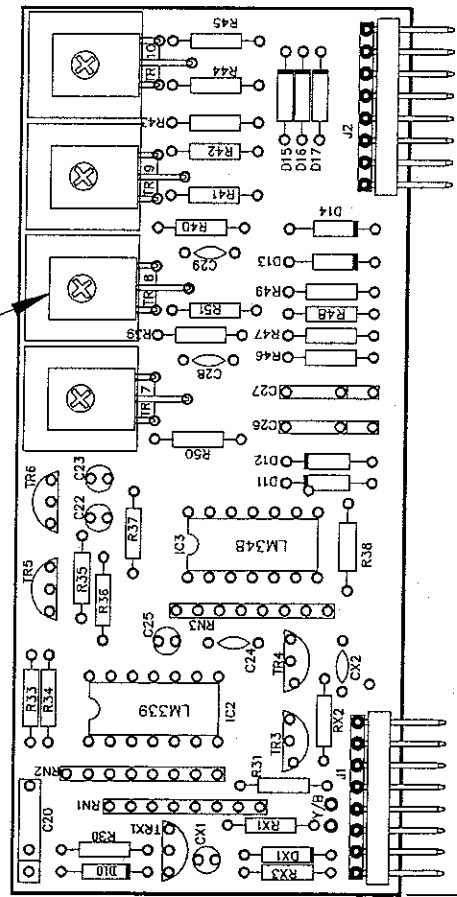
D

D

x 4

7

1
2
x 4



3
4
8

10.00 ±.25

C

C

B

B

A

A

SEE SEPARATE PARTS LIST

ULD	USED ON
NEXT ASSY	APPLICATION

DIMENSIONS ARE IN INCHES
FRACTIONS DECIMALS ANGLES
± 1/16 .XXX ±.01 ± 1°
.XXX ±.005

MATERIAL: SEE NOTE 1

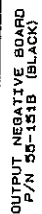
FINISH:

DO NOT SCALE DRAWING

APPROVALS	DATE
DESIGNED M.J.T.	3-9-94
CHECKED Q.C.	4/12/94
ENGINEERING	4/12/94

Velodyne Acoustics Inc.
ASSY ULD-15/18
PREAMP BABY BOARD

SIZE B	DWG. NO. 84-155	REV. A
SCALE 2:1	SHEET 1	OF 1



VELOCITYNE ACOUSTICS	
USED ON ULD SERIES II 15/18	
Title	
OUTPUT 80ARDS	
Size	Document Number
8	95-151
Date:	February 18, 1991
Sheet	of
REV	