



DJ CONTROLLER

VCI-300MKII

SERVICE MANUAL

Vestax Corporation

Vestax Corporation

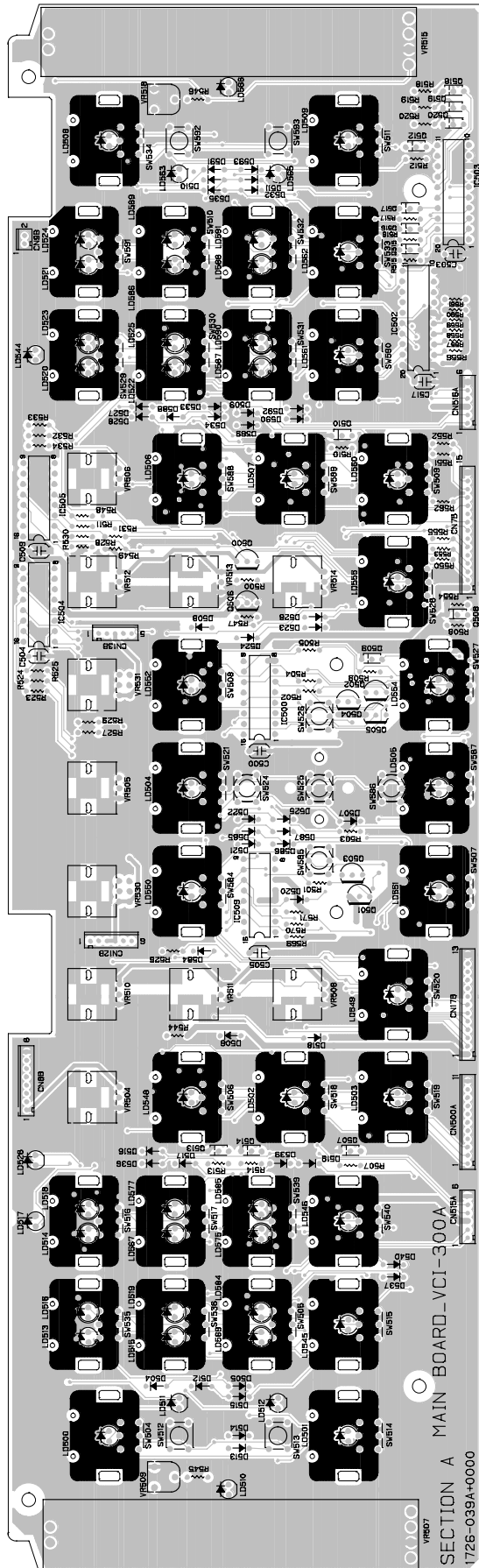
1-18-6 Wakabayashi, Setagaya-ku, Tokyo 154-0023 Japan
Phone 03-3412-7011 Fax 03-3412-7013
Web : www.vestax.com

Vestax Europe Technical Support

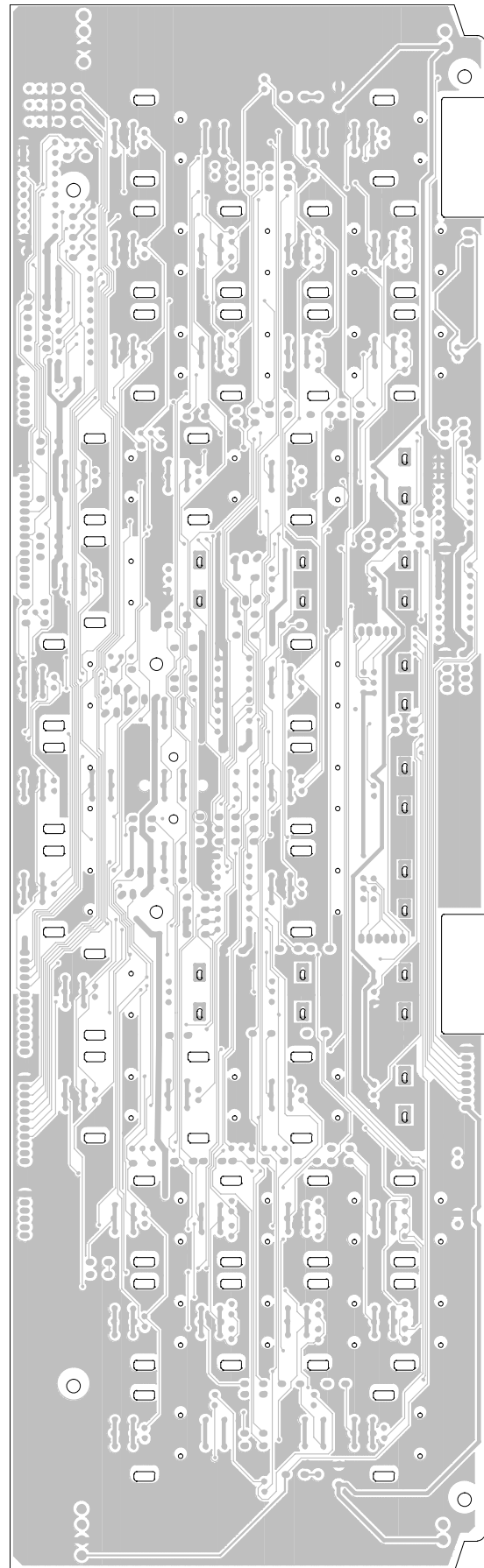
Rheinstr.213 D-53332 Bornheim Germany
Phone 49(0)2222-95-23-72 Fax 49(0)2222-95-23-74

PCB LAYOUT

PANEL Board

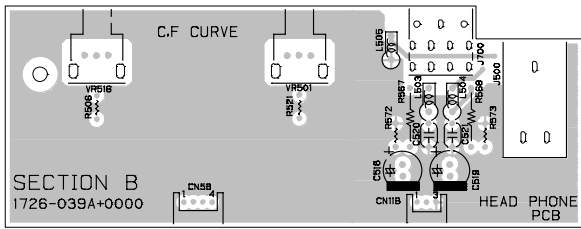


Top side

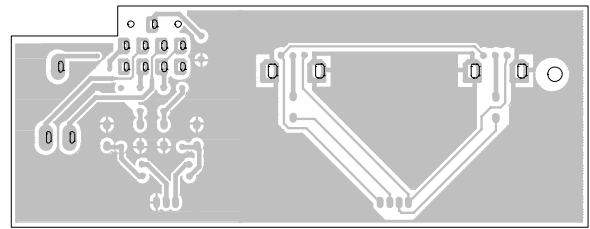


Bottom side

IFCF Board

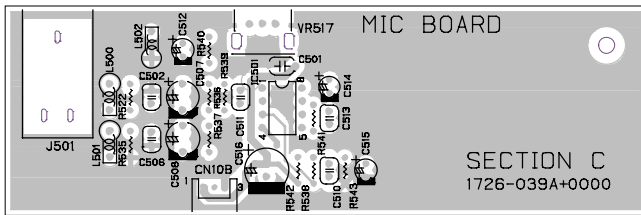


Top side

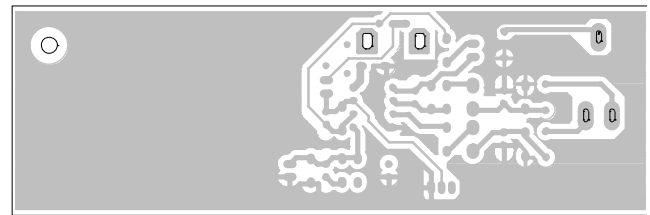


Bottom side

MIC Board

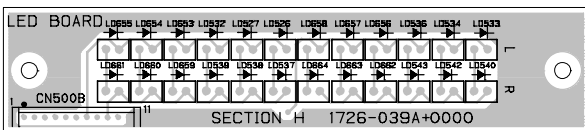


Top side

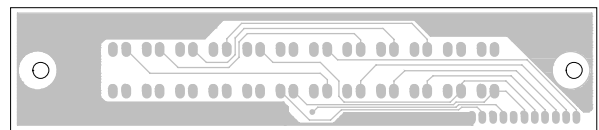


Bottom side

LEVEL Board

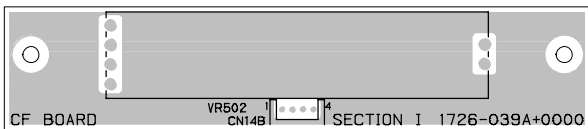


Top side



Bottom side

CF Board



Top side

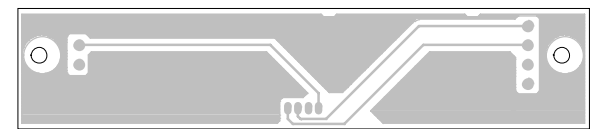


Bottom side

LFA Board

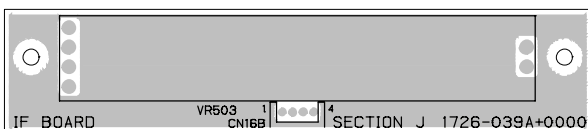


Top side

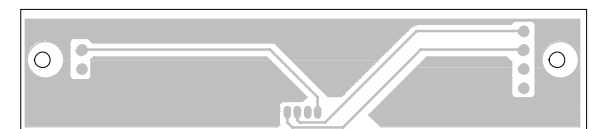


Bottom side

LFB Board

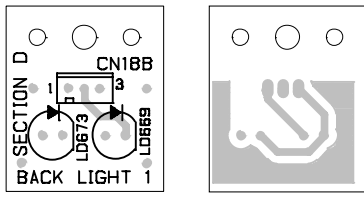


Top side



Bottom side

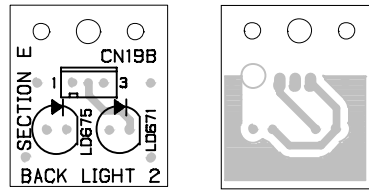
LED1 Board



Top side

Bottom side

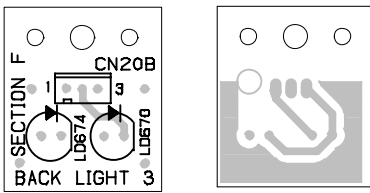
LED2 Board



Top side

Bottom side

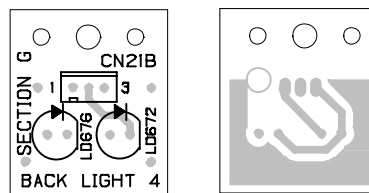
LED3 Board



Top side

Bottom side

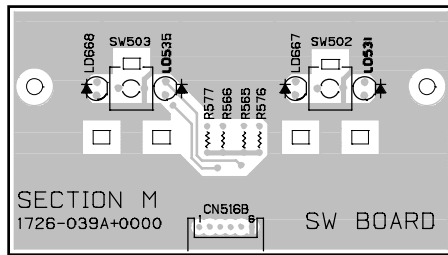
LED4 Board



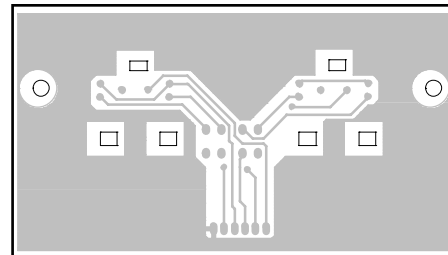
Top side

Bottom side

SWA Board

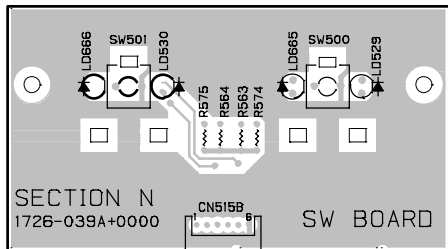


Top side

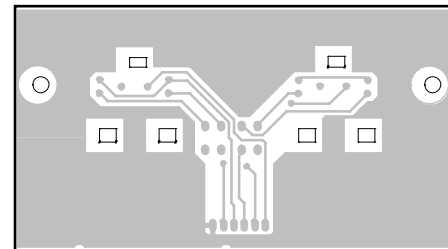


Bottom side

SWB Board

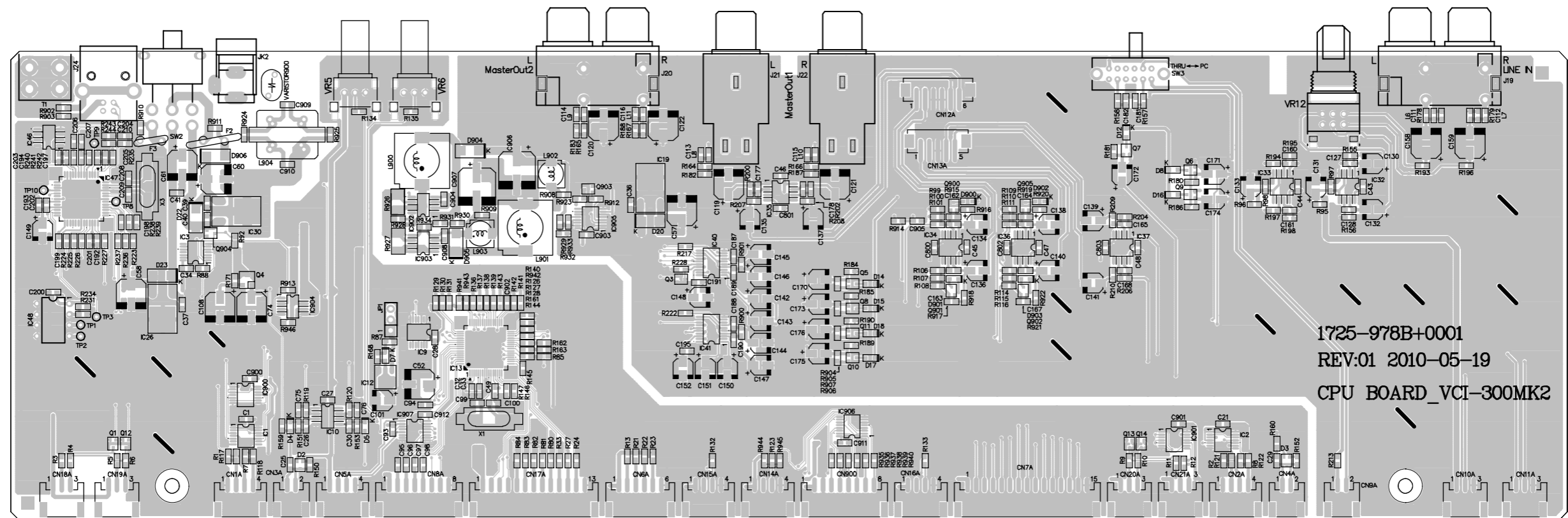


Top side

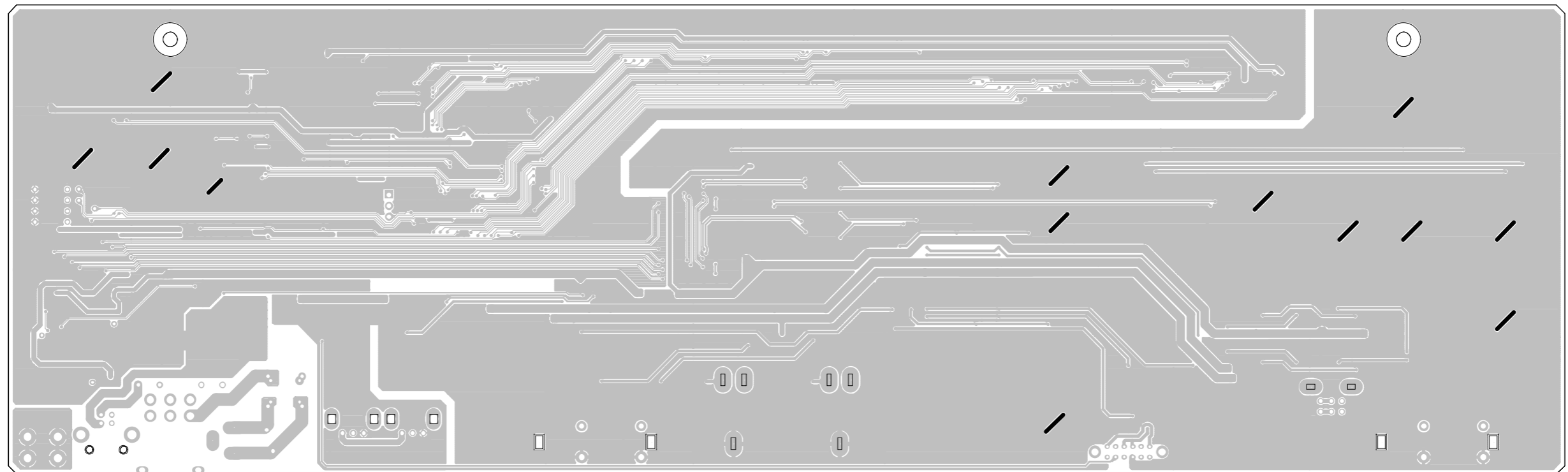


Bottom side

MCU Board



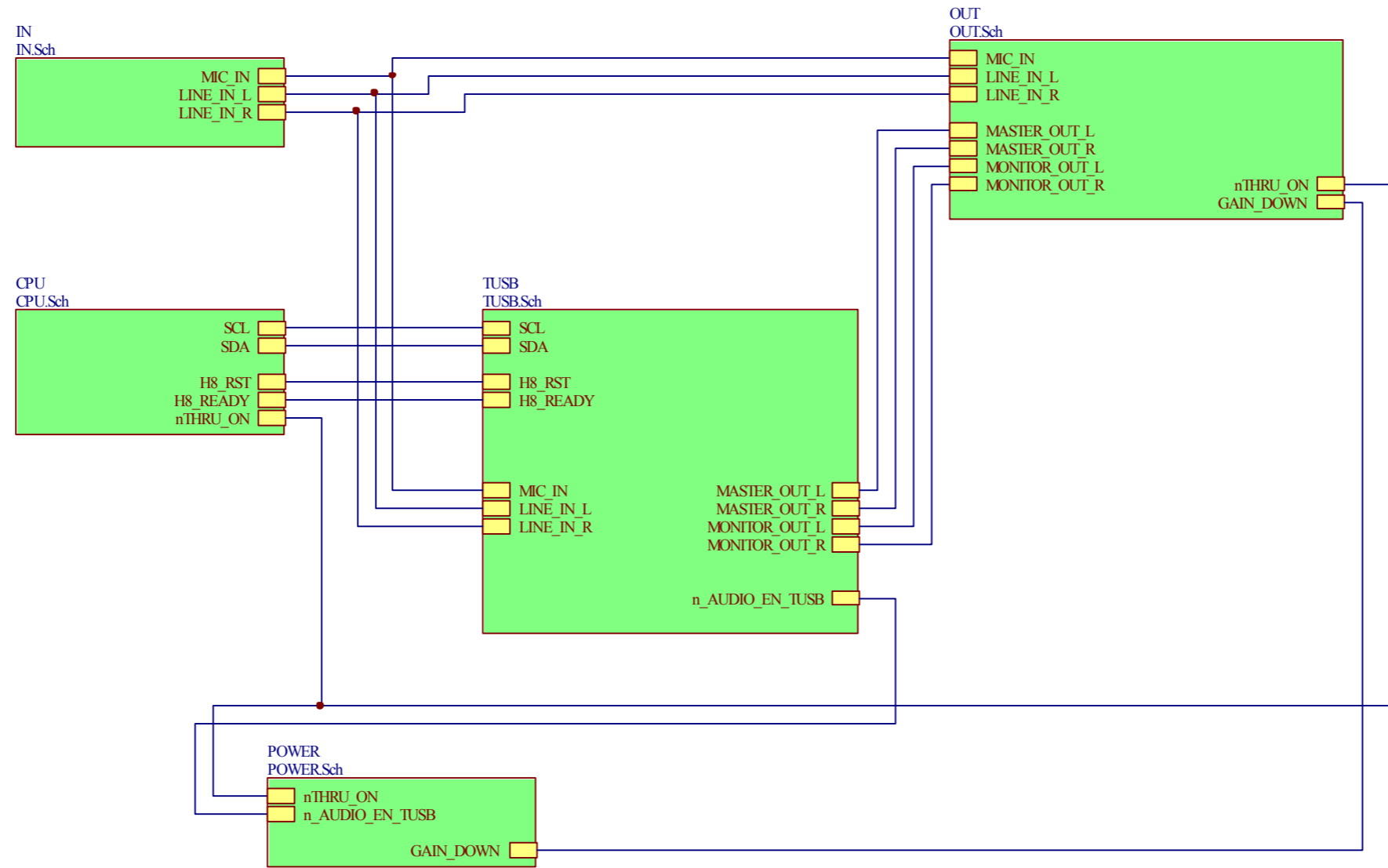
Top side

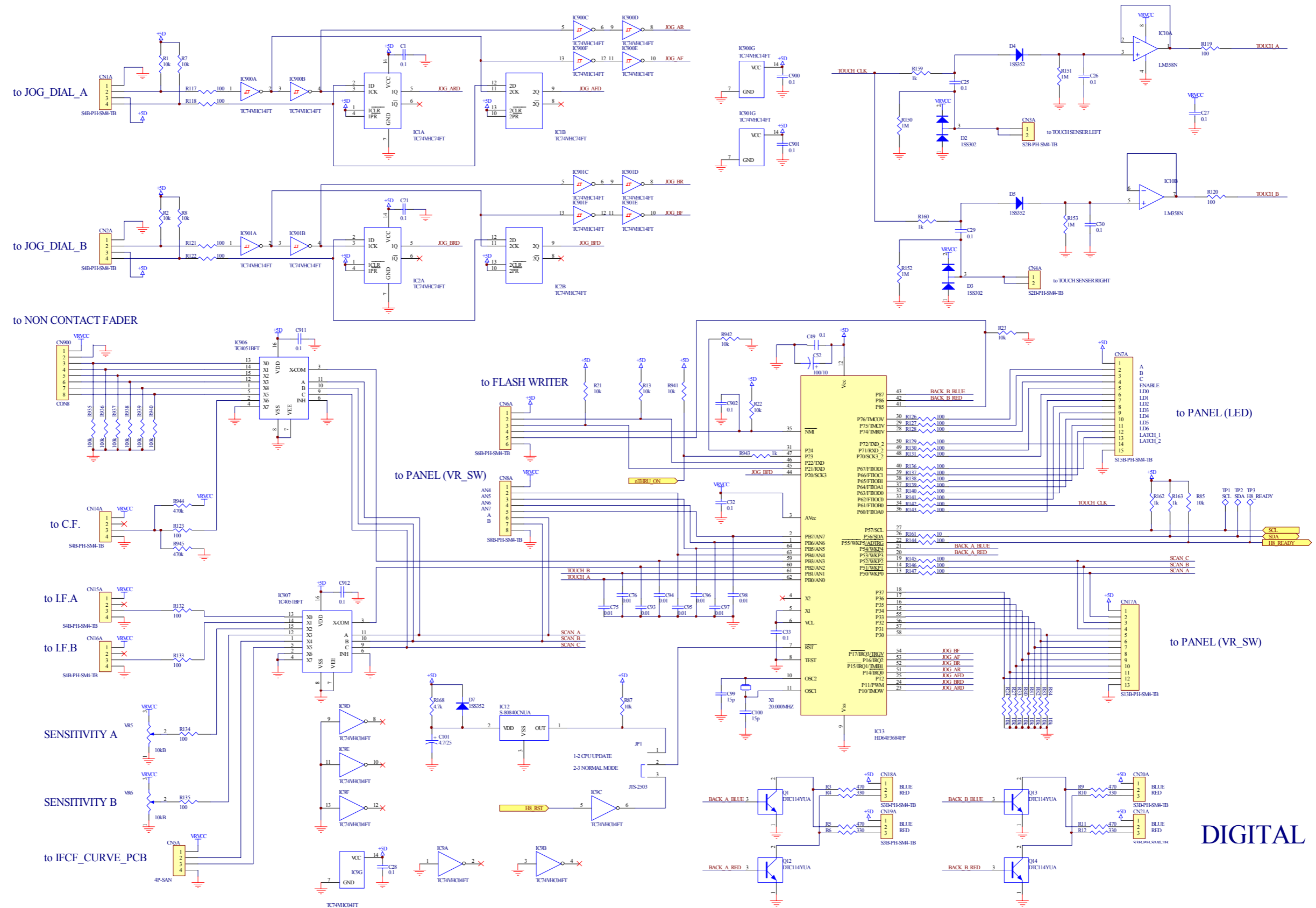


Bottom side

SCHEMATIC DIAGRAM

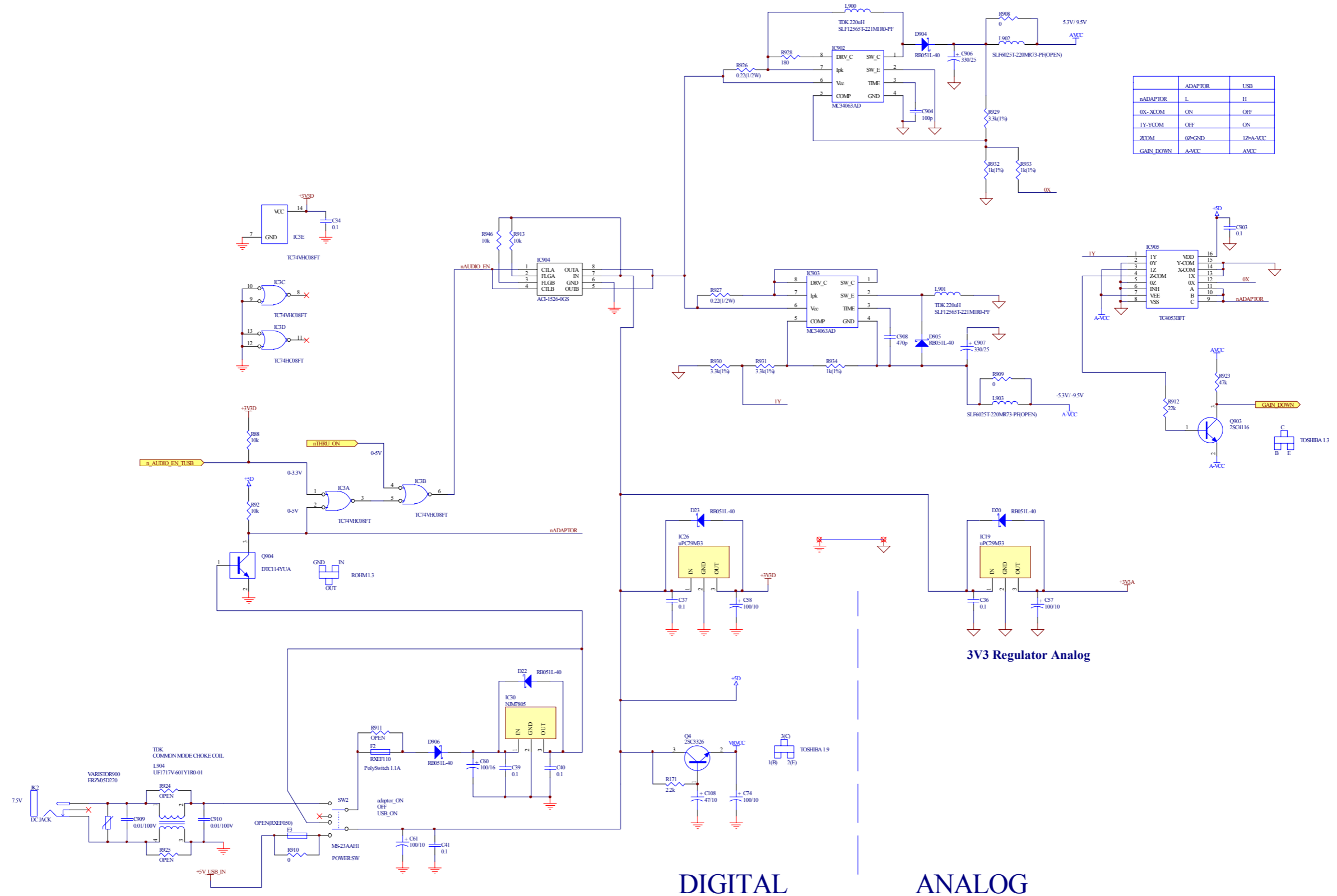
CPU - TOP





DIGITAL

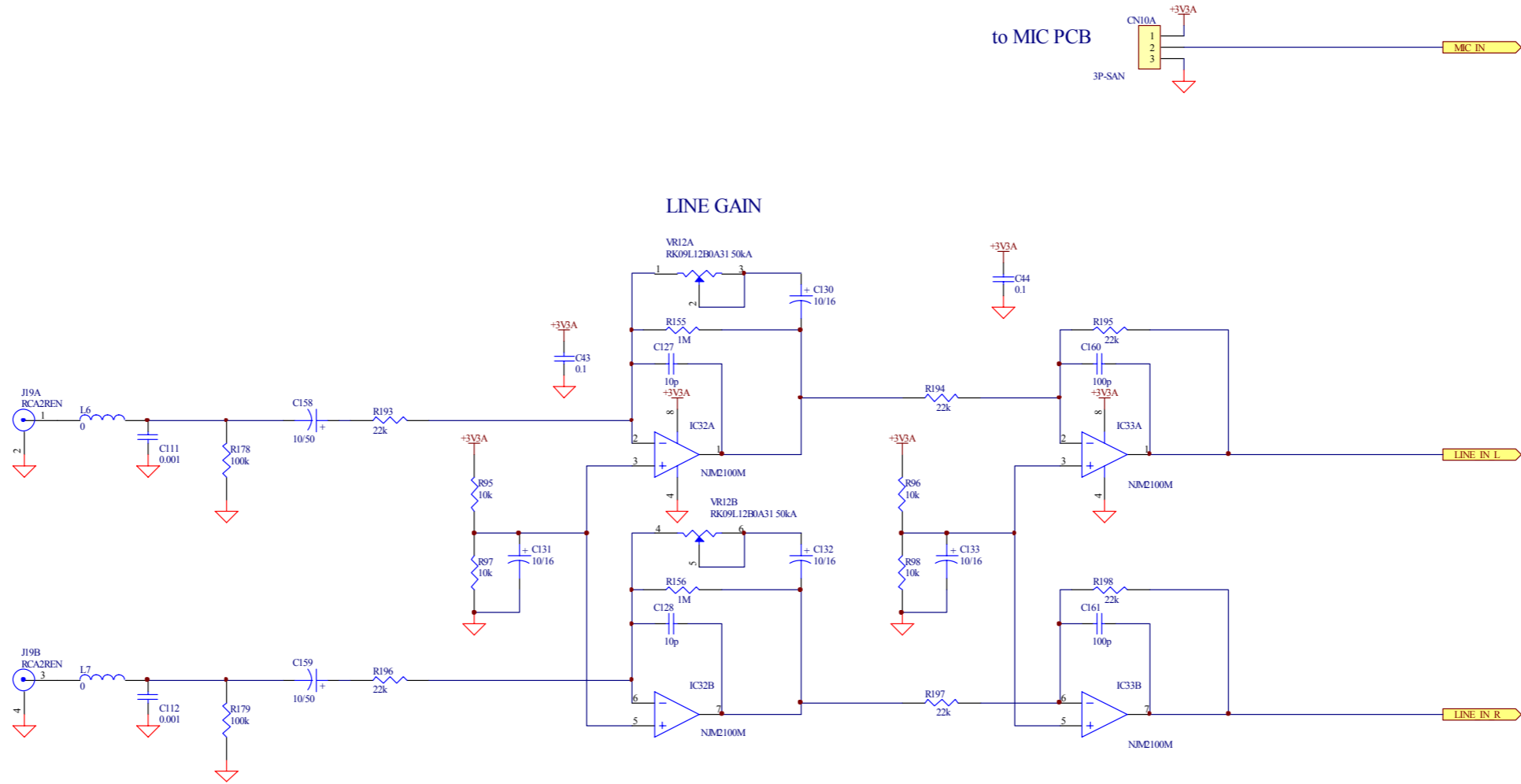
CPU - POWER



LINE IN

L

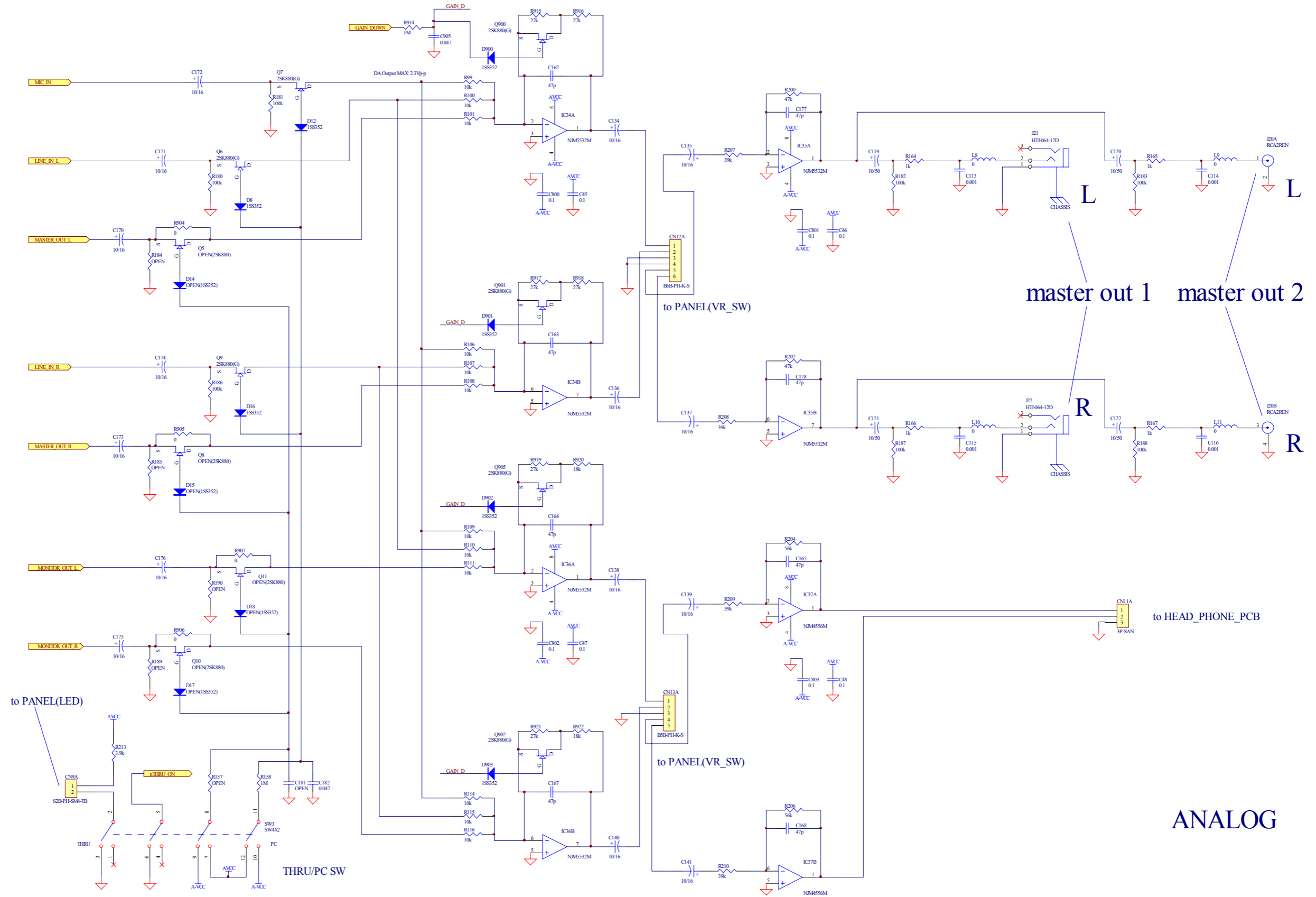
R



AD Input MAX 2.3Vp-p

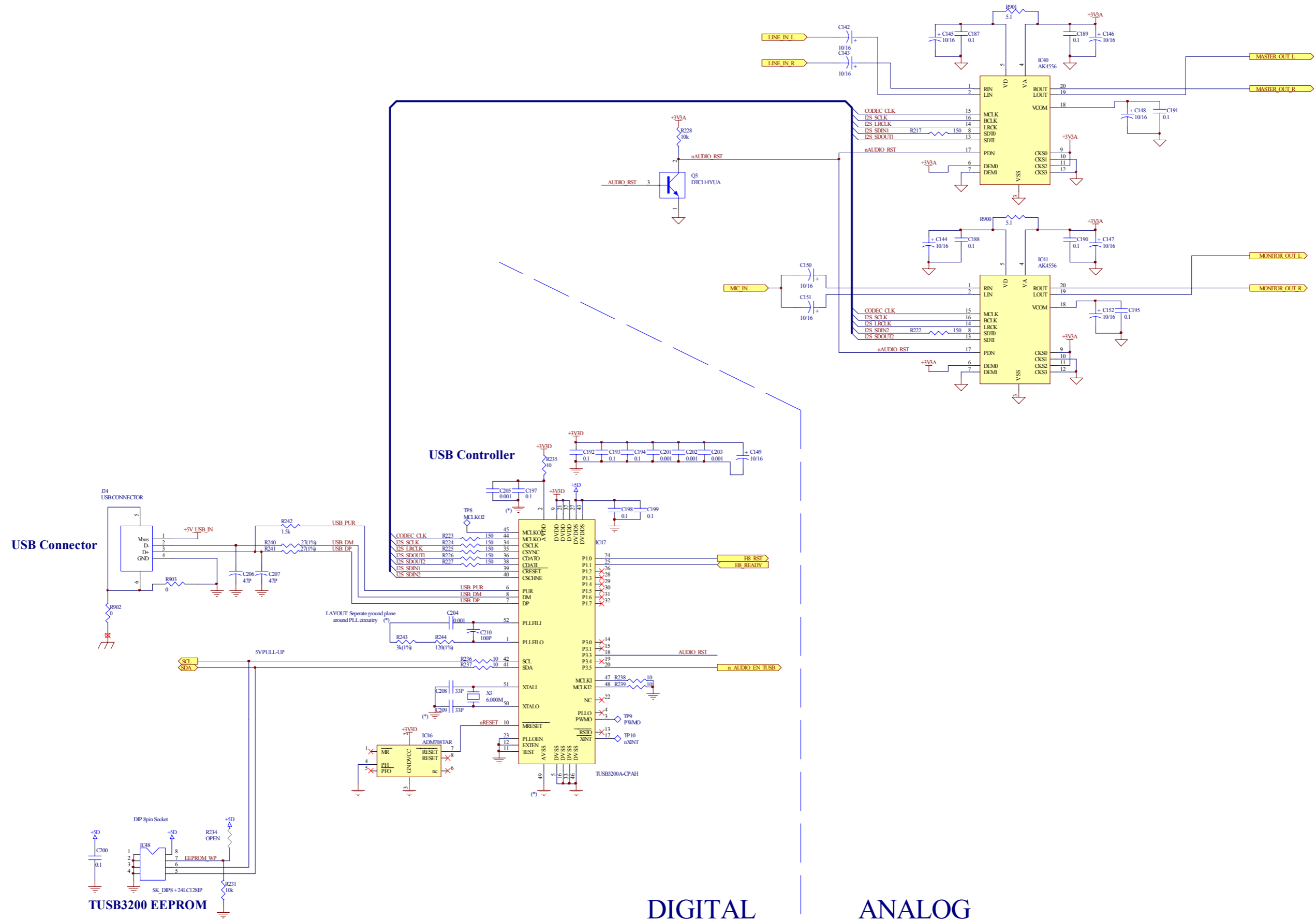
ANALOG

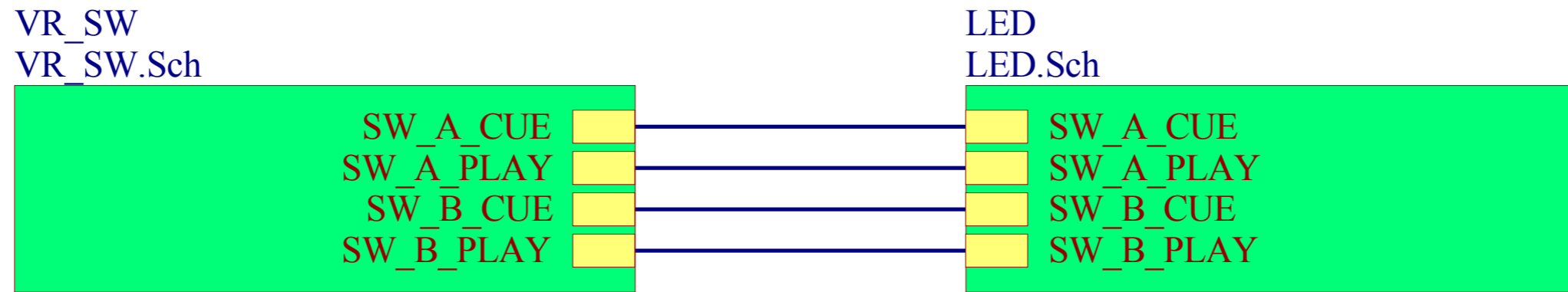
CPU - OUT



ANALOG

CPU - TUSB





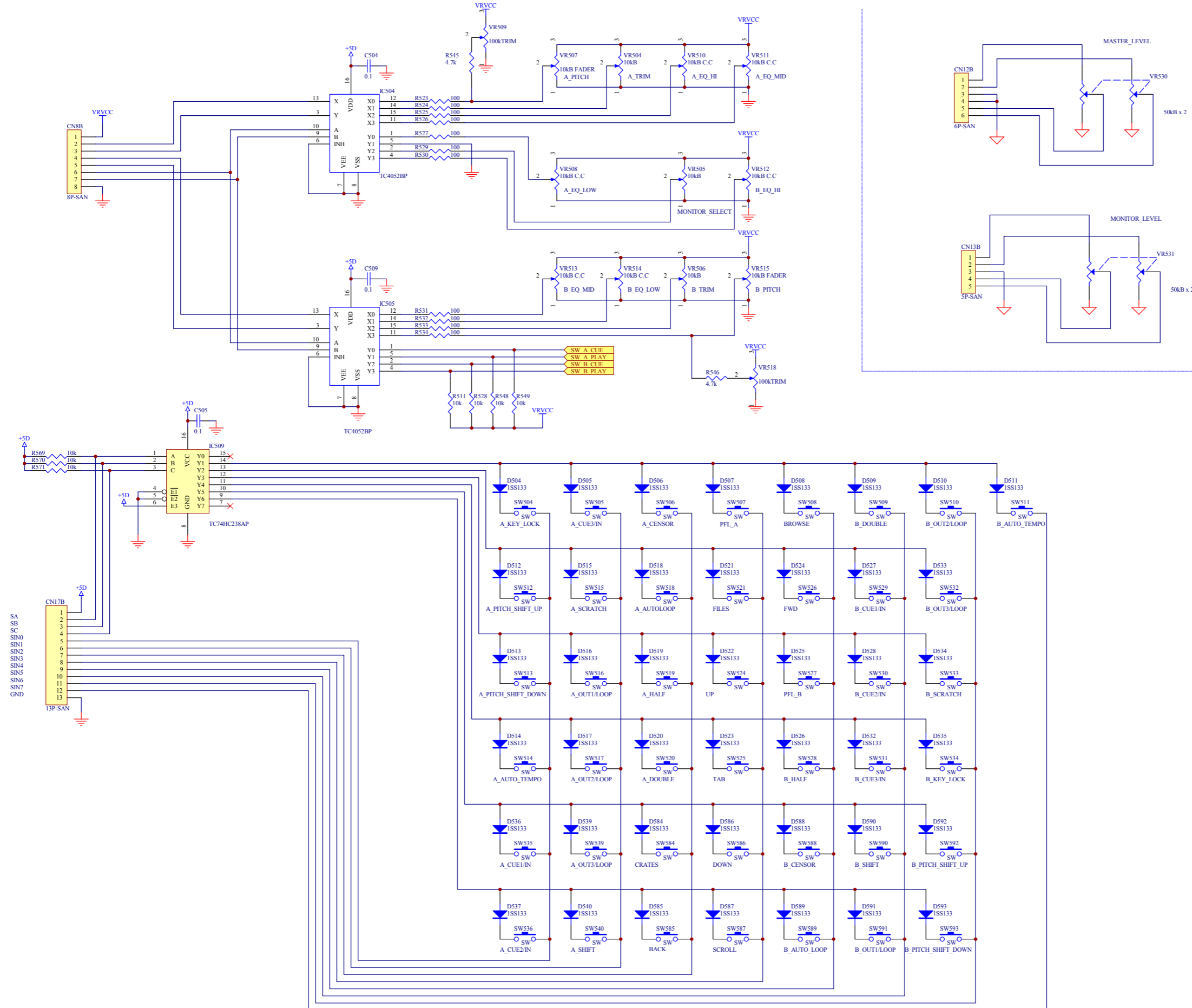
OTHER
OTHER.Sch



MIC
MIC.Sch



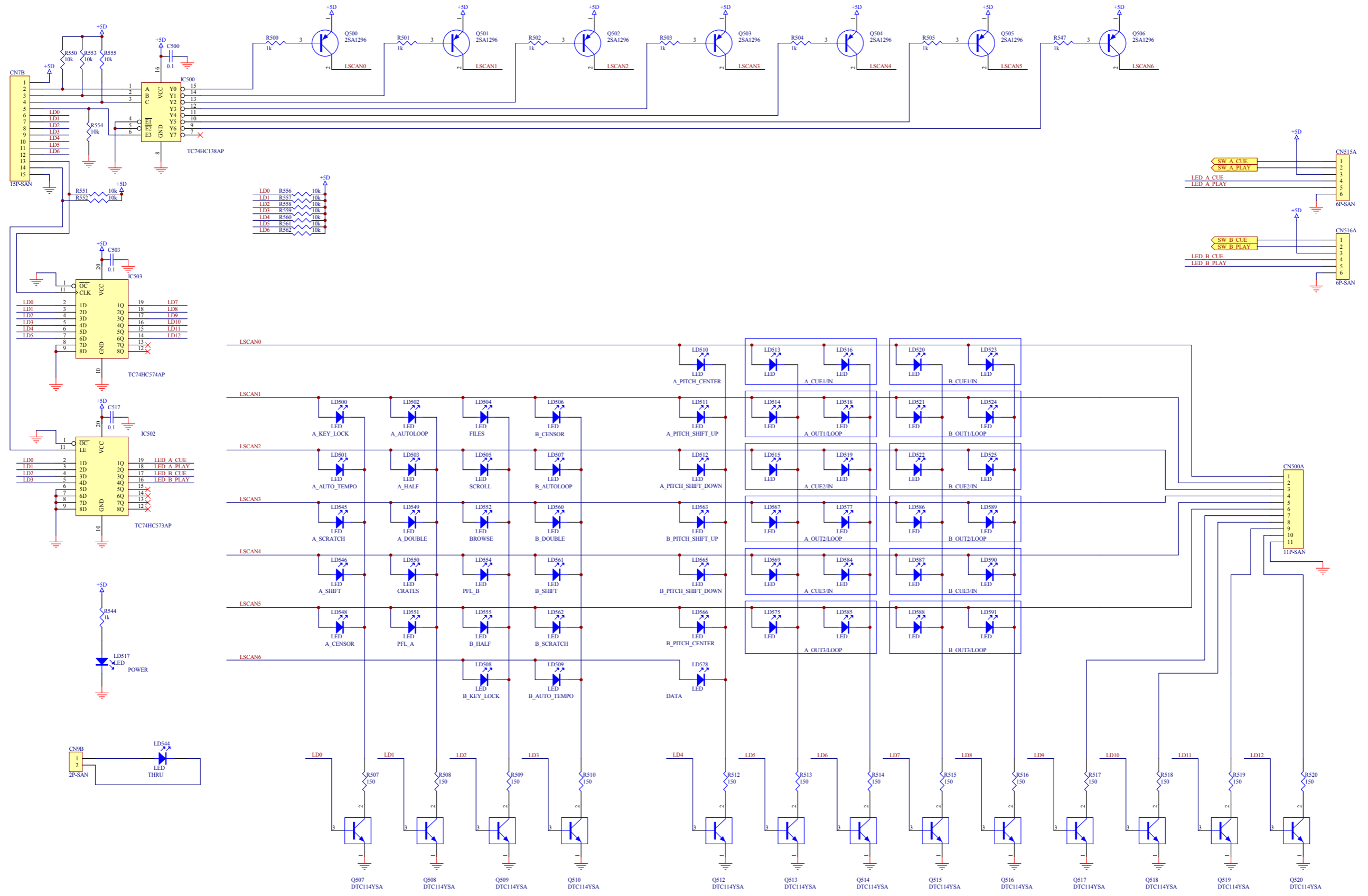
PANEL - VR_SW



ANALOG

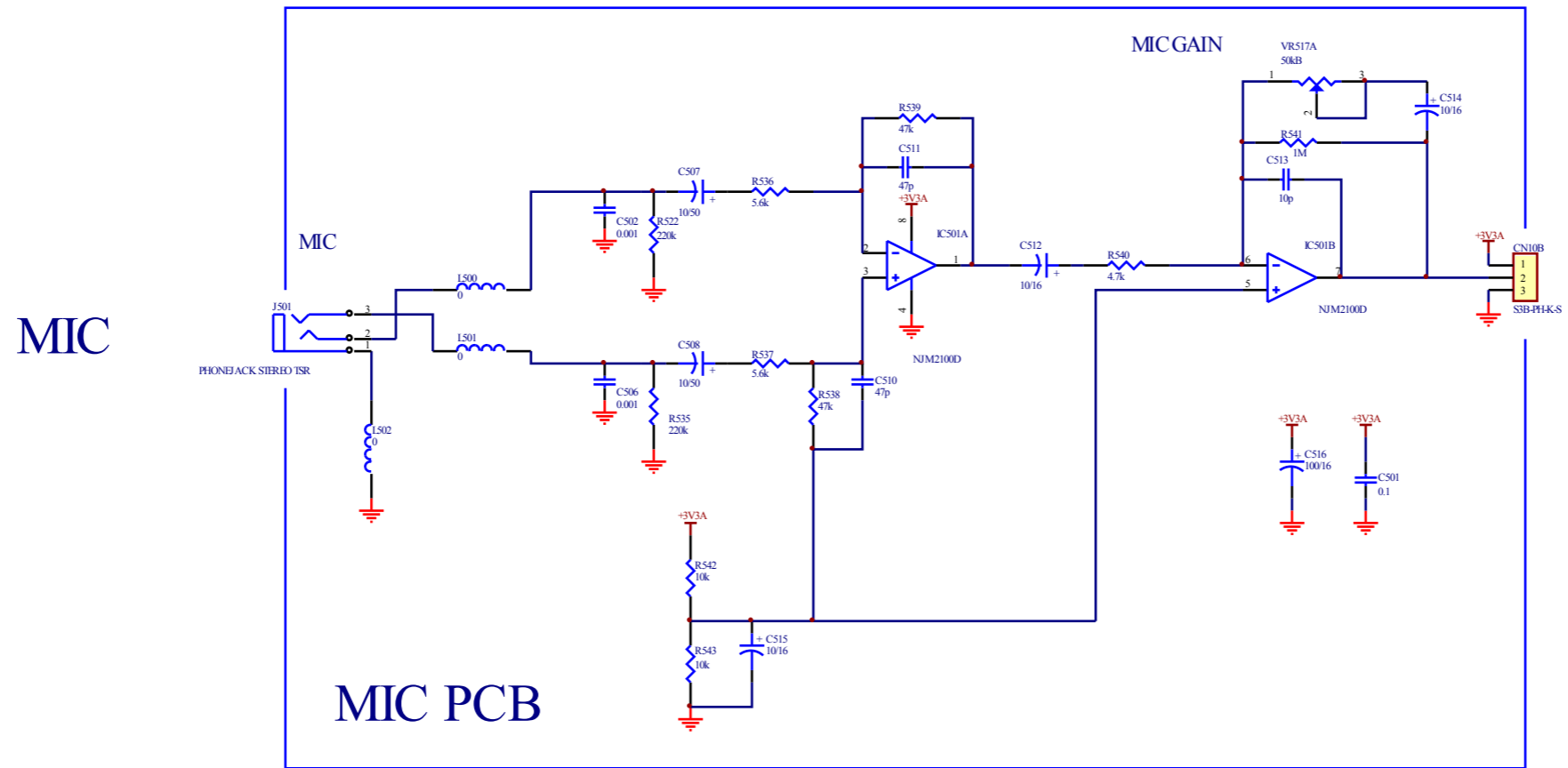
DIGITAL

PANEL - LED

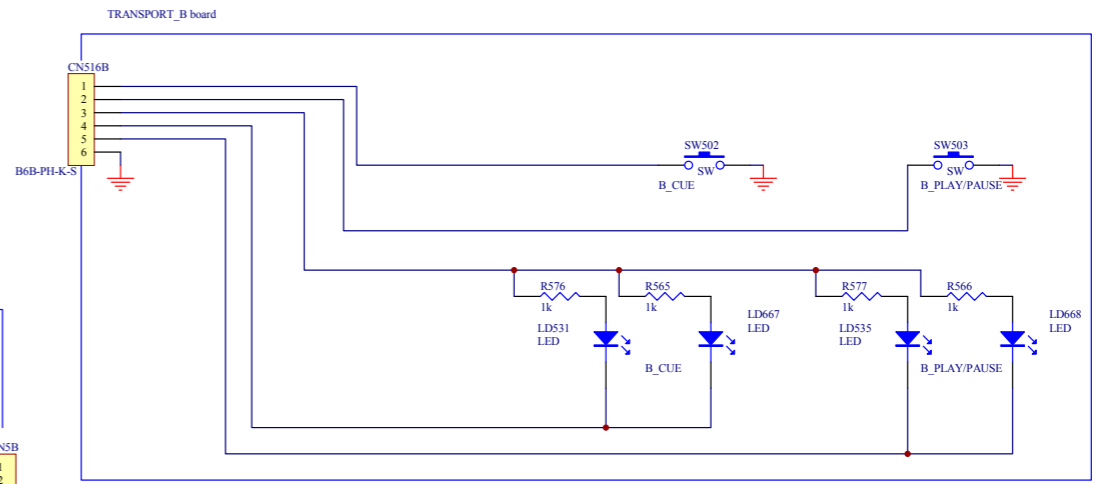
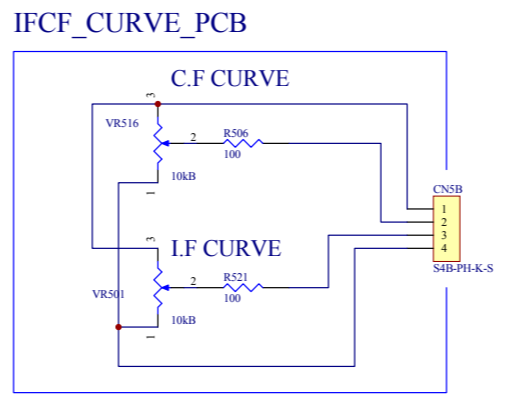
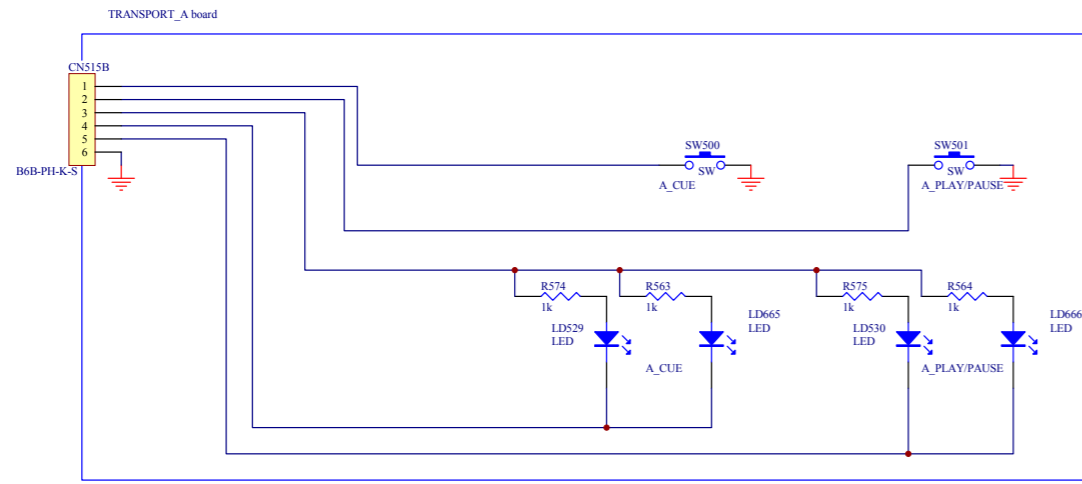
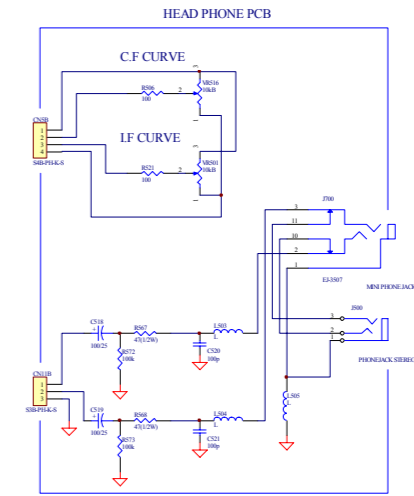
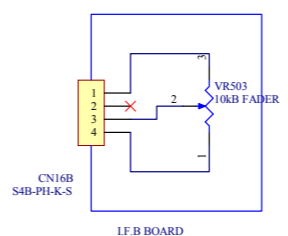
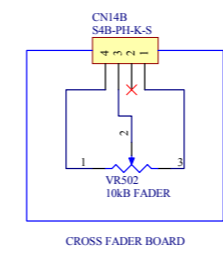
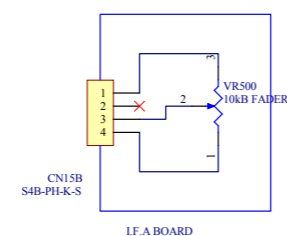
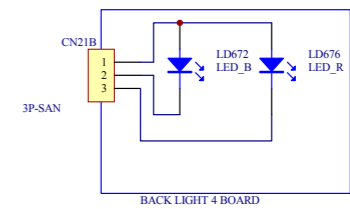
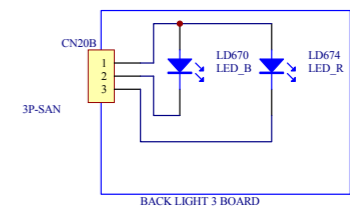
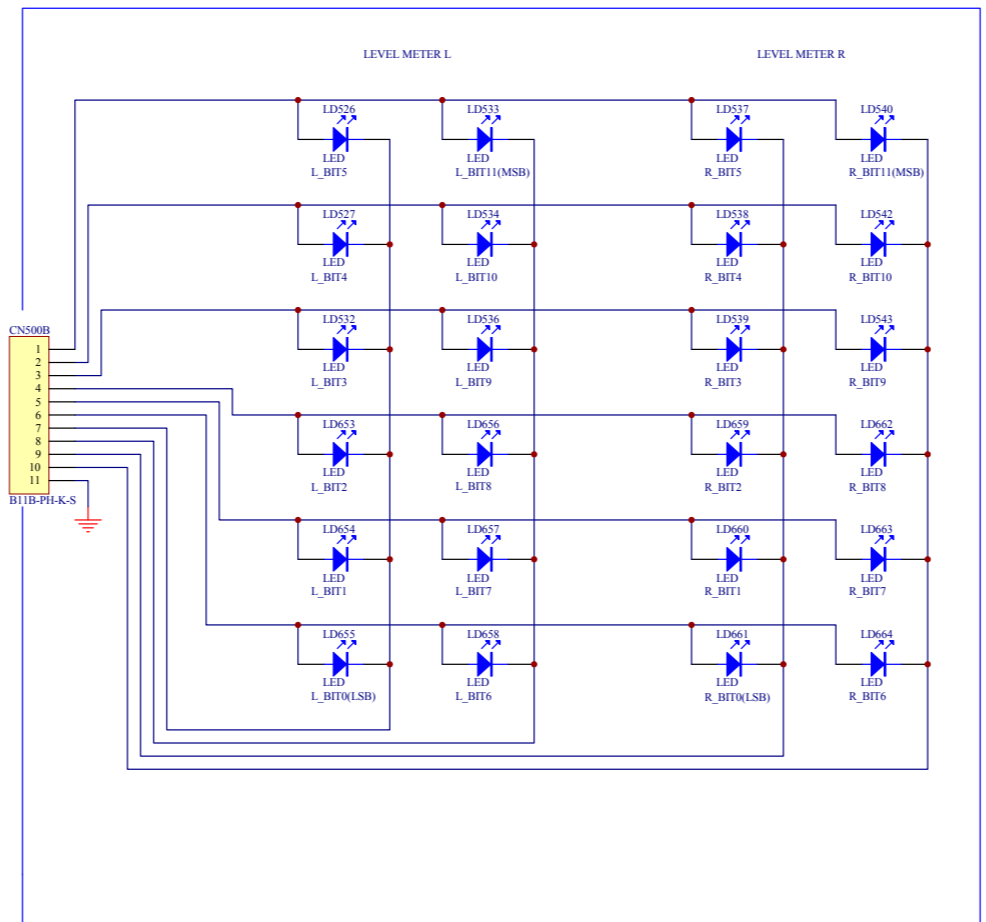
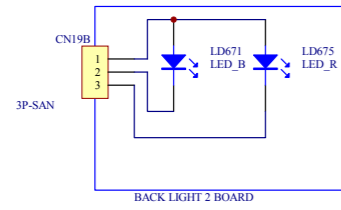
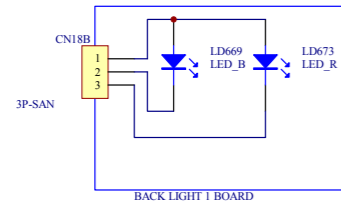


DIGITAL

PANEL - MIC



PANEL - OTHER



ELECTRICAL PART LIST

| <u>Location</u> | <u>Part Number</u> | <u>Description</u> |
|---------------------------------------|--------------------|--------------------------|
| <u>PCB ASSY ENCODER MODULE</u> | | |
| | PCB-2002P04+EN | PCB ASSY ENCODER MODULE |
| <i>PC BOARD</i> | | |
| PCB1 | 1725-974A+0000 | PCB EN S/S FR-1 A |
| <i>MISCELLANEOUS</i> | | |
| EC1/2 | 4810-0#50+3 | PHOTO SENSOR H9700#50 |
| J1A/2A | 7013-0300+0 | WIRE-CONN 4P P2.0 #28 |
| JOG A1/B1 | 7013-0310+0 | WIRE 2P P2.0 #28 UL1571 |
| <u>PCB ASSY CROSS FADER JP</u> | | |
| | PCB-200901+CF | PCB ASSY CROSS FADER JP |
| <i>PC BOARD</i> | | |
| SECTION I | 1726-039A+0000 | PCB PANEL/TRAN/IFCF/MIC/ |
| <i>WAFER/SOCKET</i> | | |
| CN14B | 2102-040R+J01 | WAFER 4P P2.0 90DEG |
| <i>VR/SVR</i> | | |
| VR502 | 4751-1559+0 | VR SLIDE B10KX1 20% V |
| <u>PCB ASSY IFCF JP</u> | | |
| | PCB-200901+IFCF | PCB ASSY IFCF JP |
| <i>PC BOARD</i> | | |
| SECTION B | 1726-039A+0000 | PCB PANEL/TRAN/IFCF/MIC/ |
| <i>CAPACITOR</i> | | |
| C518, C519 | 157E-107M+H-IUT | CE 25V 100U 20% RLR 5X11 |
| C520, C521 | 150F-101J+K-IF | CC 50V 100P 5% RLT 5x3.5 |
| <i>WAFER/SOCKET</i> | | |
| CN11B | 2102-030R+003 | 3 PIN WAFER P2.0 R-ANGLE |
| CN5B | 2102-040R+J01 | WAFER 4P P2.0 90DEG |
| <i>JACK/SOCKET</i> | | |
| J500 | 2113-1955+0 | PHONE JACK ST 6.35MM |
| <i>RESISTOR</i> | | |
| R506, R521 | 4705-101J+C | RCF 1/4W 100R 5% ATS |
| R567, R568 | 4705-470J+C | RCF 1/4W 47R 5% ATS |
| R572, R573 | 4705-104J+C | RCF 1/4W 100K 5% ATS |
| <i>VR/SVR</i> | | |
| VR501, VR516 | 4751-1689+0 | VR ROTARY B10KX1 20% H |

| Location | Part Number | Description |
|-------------------------|--------------------|--------------------------|
| MISCELLANEOUS | | |
| J700 | 2113-3360+0 | PHONE JACK 7PIN 3.5MM |
| L503, L504, L505 | 1808-0889+0 | FERRITE BEAD 3.4X12 RLT |
| PCB ASSY LED1 JP | | |
| | PCB-200901+LED1 | PCB ASSY LED1 JP |
| PC BOARD | | |
| SECTION D | 1726-039A+0000 | PCB PANEL/TRAN/IFCF/MIC/ |
| MISCELLANEOUS | | |
| CN18B | 7013-0291+0 | WIRE-CONN 3P P2.0 #28 |
| LD669 | 3700-1642+B | LED SC 5X7X24 BL HIGH |
| LD673 | 3700-1644+R | LED SC 5X7X24 RD HIGH |
| PCB ASSY LED2 JP | | |
| | PCB-200901+LED2 | PCB ASSY LED2 JP |
| PC BOARD | | |
| SECTION E | 1726-039A+0000 | PCB PANEL/TRAN/IFCF/MIC/ |
| MISCELLANEOUS | | |
| CN19B | 7013-0291+0 | WIRE-CONN 3P P2.0 #28 |
| LD671 | 3700-1642+B | LED SC 5X7X24 BL HIGH |
| LD675 | 3700-1644+R | LED SC 5X7X24 RD HIGH |
| PCB ASSY LED3 JP | | |
| | PCB-200901+LED3 | PCB ASSY LED3 JP |
| PC BOARD | | |
| SECTION F | 1726-039A+0000 | PCB PANEL/TRAN/IFCF/MIC/ |
| MISCELLANEOUS | | |
| CN20B | 7013-0291+0 | WIRE-CONN 3P P2.0 #28 |
| LD670 | 3700-1642+B | LED SC 5X7X24 BL HIGH |
| LD674 | 3700-1644+R | LED SC 5X7X24 RD HIGH |
| PCB ASSY LED4 JP | | |
| | PCB-200901+LED4 | PCB ASSY LED4 JP |
| PC BOARD | | |
| SECTION G | 1726-039A+0000 | PCB PANEL/TRAN/IFCF/MIC/ |
| MISCELLANEOUS | | |
| CN21B | 7013-0291+0 | WIRE-CONN 3P P2.0 #28 |
| LD672 | 3700-1642+B | LED SC 5X7X24 BL HIGH |
| LD676 | 3700-1644+R | LED SC 5X7X24 RD HIGH |

| <u>Location</u> | <u>Part Number</u> | <u>Description</u> |
|--|---------------------------|---------------------------|
| <u>PCB ASSY LEVEL JP</u> | | |
| | PCB-200901+LEV | PCB ASSY LEVEL JP |
| <i>PC BOARD</i> | | |
| SECTION H | 1726-039A+0000 | PCB PANEL/TRAN/IFCF/MIC/ |
| <i>WAFER/SOCKET</i> | | |
| CN500B | 2102-110S+003 | 11P ST WAFER P=2.0 |
| <i>LED</i> | | |
| LD526, LD527, LD532 | 3700-5602+G | LED 2X5X7MM GREEN |
| LD533, LD534, LD536 | 3700-5600+R | LED 2X5X7MM RED |
| LD537, LD538, LD539 | 3700-5602+G | LED 2X5X7MM GREEN |
| LD540, LD542, LD543 | 3700-5600+R | LED 2X5X7MM RED |
| LD653, LD654, LD655, LD656, LD657, LD658, LD659, LD660, LD661, LD662, LD663, LD664 | 3700-5602+G | LED 2X5X7MM GREEN |
| <i>MISCELLANEOUS</i> | | |
| LED PCB | 4172-0090+0 | LED HOLDER D=4 H=3 |
| <u>PCB ASSY LFA JP</u> | | |
| | PCB-200901+LFA | PCB ASSY LFA JP |
| <i>PC BOARD</i> | | |
| SECTION K | 1726-039A+0000 | PCB PANEL/TRAN/IFCF/MIC/ |
| <i>VR/SVR</i> | | |
| VR500 | 4751-1579+0 | VR SLIDE B10KX1 20% C.C |
| <i>MISCELLANEOUS</i> | | |
| CN15B | 2102-040S+003 | WAFER 4P P2.0 STRAIGHT |
| <u>PCB ASSY LFB JP</u> | | |
| | PCB-200901+LFB | PCB ASSY LFB JP |
| <i>PC BOARD</i> | | |
| SECTION J | 1726-039A+0000 | PCB PANEL/TRAN/IFCF/MIC/ |
| <i>VR/SVR</i> | | |
| VR503 | 4751-1579+0 | VR SLIDE B10KX1 20% C.C |
| <i>MISCELLANEOUS</i> | | |
| CN16B | 2102-040S+003 | WAFER 4P P2.0 STRAIGHT |
| <u>PCB ASSY MIC JP</u> | | |
| | PCB-200901+MIC | PCB ASSY MIC JP |
| <i>PC BOARD</i> | | |
| SECTION C | 1726-039A+0000 | PCB PANEL/TRAN/IFCF/MIC/ |

| <u>Location</u> | <u>Part Number</u> | <u>Description</u> |
|--|---------------------------|---------------------------|
| <i>CAPACITOR</i> | | |
| C501 | 150F-104K+K-II | CC 50V 0.1U 10% RLT 5x5 |
| C502, C506 | 150F-102K+5-IEA | CC 50V 1000P 10% RL 5x3 |
| C507, C508 | 157F-106M+K-IU | CE 50V 10U 20% RLT 5X11 |
| C510, C511 | 150F-470J+5-IF | CC 50V 47pF 5% RL 5x3.5 |
| C512 | 157D-106M+H-GME | CE 16V 10U 20% RLR 4X7 E |
| C513 | 150F-100J+5-II | CC 50V 10pF 5% RL 5x5 |
| C514, C515 | 157D-106M+H-GME | CE 16V 10U 20% RLR 4X7 E |
| C516 | 157D-107M+H-IU | CE 16V 100U 20% RLR 5x11 |
| <i>WAFER/SOCKET</i> | | |
| CN10B | 2102-030R+003 | 3 PIN WAFER P2.0 R-ANGLE |
| <i>JACK/SOCKET</i> | | |
| J501 | 2113-1955+0 | PHONE JACK ST 6.35MM |
| <i>RESISTOR</i> | | |
| R522, R535 | 4705-223J+C | RCF 1/4W 22K 5% ATS |
| R536, R537 | 4705-562J+C | RCF 1/4W 5.6K 5% ATS |
| R538, R539 | 4705-473J+C | RCF 1/4W 47K 5% ATS |
| R540 | 4705-472J+C | RCF 1/4W 4.7K 5% ATS |
| R541 | 4705-105J+C | RCF 1/4W 1M 5% ATS |
| R542, R543 | 4705-103J+C | RCF 1/4W 10K 5% ATS |
| <i>VR/SVR</i> | | |
| VR517 | 4751-1699+0 | VR ROTARY B50KX1 20% H |
| <i>MISCELLANEOUS</i> | | |
| L500, L501, L502 | 1808-0889+0 | FERRITE BEAD 3.4X12 RLT |
| <u>PCB ASSY PANEL JP</u> | | |
| | PCB-200901+PANE | PCB ASSY PANEL JP |
| <i>PC BOARD</i> | | |
| SECTION A | 1726-039A+0000 | PCB PANEL/TRAN/IFCF/MIC/ |
| <i>CAPACITOR</i> | | |
| C500, C503, C504, C505, C509, C517 | 150F-104K+K-II | CC 50V 0.1U 10% RLT 5x5 |
| <i>DIODE</i> | | |
| D504, D505, D506, D507, D508, D509, D510, D511, D512, D513, D514, D515, D516, D517, D518, D519, D520, D521, D522, D523, D524, D525, D526, D527, D528, D532, D533, D534, D535, D536, D537, D539, D540, D584, D585, D586, D587, D588, D589, D590, D591, D592, D593 | 4840-0990+2 | DIODE 1SS133(223163T) |
| <i>TRANSISTOR</i> | | |
| Q500, Q501, Q502, Q503, Q504, Q505, Q506 | 4851-2960+K | TR PNP 2SA1296 HFE: 120 |
| Q507, Q508, Q509, Q510, Q512, Q513, Q514, Q515, Q516, Q517, Q518, Q519, Q520 | 4860-1770+K | TR NPN DTC114YSA DIGITAL |
| <i>RESISTOR</i> | | |
| R500, R501, R502, R503, R504, R505 | 4705-102J+C | RCF 1/4W 1K 5% ATS |

| Location | Part Number | Description |
|---|--------------------|--------------------------|
| R507, R508, R509, R510 | 4705-151J+C | RCF 1/4W 150R 5% ATS |
| R511 | 4705-103J+C | RCF 1/4W 10K 5% ATS |
| R512, R513, R514, R515, R516, R517, R518, R519, R520 | 4705-151J+C | RCF 1/4W 150R 5% ATS |
| R523, R524, R525, R526, R527 | 4705-101J+C | RCF 1/4W 100R 5% ATS |
| R528 | 4705-103J+C | RCF 1/4W 10K 5% ATS |
| R529, R530, R531, R532, R533, R534 | 4705-101J+C | RCF 1/4W 100R 5% ATS |
| R544 | 4705-102J+C | RCF 1/4W 1K 5% ATS |
| R545, R546 | 4705-472J+C | RCF 1/4W 4.7K 5% ATS |
| R547 | 4705-102J+C | RCF 1/4W 1K 5% ATS |
| R548, R549, R550, R551, R552, R553, R554, R555, R556, R557, R558, R559, R560, R561, R562, R569, R570, R571 | 4705-103J+C | RCF 1/4W 10K 5% ATS |
| | | |
| IC | | |
| IC504, IC505 | 3130-3840+0 | IC TC4052BP(F/N/M) QUAD |
| | | |
| VR/SVR | | |
| VR504, VR505, VR506 | 4751-1719+0 | VR ROTARY B10KX1 20% V |
| VR508 | 4751-1709+0 | VR ROTARY B10KX1 20% C.C |
| VR509 | 4756-1046+3-06 | SVR B100K H3 7x7.6 |
| VR510, VR511, VR512, VR513, VR514 | 4751-1709+0 | VR ROTARY B10KX1 20% C.C |
| VR518 | 4756-1046+3-06 | SVR B100K H3 7x7.6 |
| VR530, VR531 | 4751-1739+0 | VR ROTARY B50KX2 20% V |
| | | |
| SWITCH | | |
| SW504, SW505, SW506, SW507, SW508, SW509, SW510, SW511 | 5200-4847+0-01 | SW TACT SPST SKQNAED010 |
| SW512, SW513 | 5200-4938+0-01 | SW TACT 0.98N 6X6 H=17 |
| SW514, SW515, SW516, SW517, SW518, SW519, SW520, SW521, SW524, SW525, SW526, SW527, SW528, SW529, SW530, SW531, SW532, SW533, SW534, SW535, SW536, SW539, SW540, SW584, SW585, SW586, SW587, SW588, SW589, SW590, SW591 | 5200-4847+0-01 | SW TACT SPST SKQNAED010 |
| SW592, SW593 | 5200-4938+0-01 | SW TACT 0.98N 6X6 H=17 |
| | | |
| MISCELLANEOUS | | |
| CN12B | 7013-0450+0 | WIRE-CONN 6P P2.0 #28 |
| CN13B | 7013-0220+0 | WIRE-CONN 5P P2.0 #28 |
| CN17B | 7013-0340+0 | WIRE-CONN 13P P2.0 #28 |
| CN500A | 7013-0201+0 | WIRE-CONN 11P P2.0 #28 |
| CN515A, CN516A | 7013-0451+0 | WIRE-CONN 6P P2.0 #28 |
| CN7B | 7013-0261+0 | WIRE-CONN 15P P2.0 #28 |
| CN8B | 7013-0281+0 | WIRE-CONN 8P P2.0 #28 |
| CN9B | 7013-0460+0 | WIRE-CONN 2P P2.0 #28 |
| IC500 | 3132-7170+0 | IC ASIC TC74HC138AP |
| IC501 | 3132-7150+0 | IC ASIC NJM2100D DIP-8 |
| IC502 | 3132-7200+0 | IC ASIC TC74HC573AP |
| IC503 | 3132-7210+0 | IC ASIC TC74HC574AP |
| IC509 | 3132-6960+0 | IC ASIC TC74HC238AP |
| LD500, LD501 | 3700-1641+G | LED SC 3X5.5X24 GN HIGH |
| LD502, LD503, LD504, LD505, LD506, LD507 | 3700-1643+Y | LED SC 3X5.5X24 YL HIGH |
| LD508, LD509 | 3700-1641+G | LED SC 3X5.5X24 GN HIGH |
| LD510 | 3700-1643+G | LED SC 3X5.5X24 GN HIGH |
| LD510-1 | 4172-0050+0 | LED HOLDER 8MM BLACK |
| LD511 | 3700-1643+R | LED SC 3X5.5X24 RD HIGH |

| Location | Part Number | Description |
|--|--------------------|--------------------------|
| LD511-1 | 4172-0050+0 | LED HOLDER 8MM BLACK |
| LD512 | 3700-1643+R | LED SC 3X5X24 RD HIGH |
| LD512-1 | 4172-0050+0 | LED HOLDER 8MM BLACK |
| LD513, LD514 | 3700-1647+R | LED SC 2.8X4.6X27 RD |
| LD515 | 3700-1643+Y | LED SC 3X5X24 YL HIGH |
| LD516 | 3700-1641+G | LED SC 3X5.5X24 GN HIGH |
| LD517 | 3700-1643+R | LED SC 3X5X24 RD HIGH |
| LD517-1 | 4172-0050+0 | LED HOLDER 8MM BLACK |
| LD518, LD519 | 3700-1641+G | LED SC 3X5.5X24 GN HIGH |
| LD520, LD521 | 3700-1647+R | LED SC 2.8X4.6X27 RD |
| LD522 | 3700-1643+Y | LED SC 3X5X24 YL HIGH |
| LD523, LD524, LD525 | 3700-1641+G | LED SC 3X5.5X24 GN HIGH |
| LD528 | 3700-1643+R | LED SC 3X5X24 RD HIGH |
| LD528-1 | 4172-0050+0 | LED HOLDER 8MM BLACK |
| LD544 | 3700-1643+R | LED SC 3X5X24 RD HIGH |
| LD544-1 | 4172-0050+0 | LED HOLDER 8MM BLACK |
| LD545, LD546 | 3700-1641+G | LED SC 3X5.5X24 GN HIGH |
| LD548, LD549, LD550, LD551, LD552, LD554, LD555, LD560 | 3700-1643+Y | LED SC 3X5X24 YL HIGH |
| LD561, LD562 | 3700-1641+G | LED SC 3X5.5X24 GN HIGH |
| LD563 | 3700-1643+R | LED SC 3X5X24 RD HIGH |
| LD563-1 | 4172-0050+0 | LED HOLDER 8MM BLACK |
| LD565 | 3700-1643+R | LED SC 3X5X24 RD HIGH |
| LD565-1 | 4172-0050+0 | LED HOLDER 8MM BLACK |
| LD566 | 3700-1643+G | LED SC 3X5X24 GN HIGH |
| LD566-1 | 4172-0050+0 | LED HOLDER 8MM BLACK |
| LD567 | 3700-1643+Y | LED SC 3X5X24 YL HIGH |
| LD569, LD575 | 3700-1648+B | LED SC 3X5.5X24 BL SUPER |
| LD577, LD584, LD585 | 3700-1641+G | LED SC 3X5.5X24 GN HIGH |
| LD586 | 3700-1643+Y | LED SC 3X5X24 YL HIGH |
| LD587, LD588 | 3700-1648+B | LED SC 3X5.5X24 BL SUPER |
| LD589, LD590, LD591 | 3700-1641+G | LED SC 3X5.5X24 GN HIGH |
| VR507, VR515 | 4751-1869+0 | VR SLIDE B10KX1 20% V |
| | | |
| | | |
| PCB ASSY SWA JP | | |
| | PCB-200901+SWA | PCB ASSY SWA JP |
| | | |
| PC BOARD | | |
| SECTION M | 1726-039A+0000 | PCB PANEL/TRAN/IFCF/MIC/ |
| | | |
| WAFER/SOCKET | | |
| CN516B | 2102-060R+003 | WAFER 6 PIN P2.0 |
| | | |
| RESISTOR | | |
| R565, R566, R576, R577 | 4705-331J+C | RCF 1/4W 330R 5% ATS |
| | | |
| MISCELLANEOUS | | |
| LD531, LD535, LD667, LD668 | 3700-1648+B | LED SC 3X5.5X24 BL SUPER |
| SW502, SW503 | 5200-4979+0-01 | SWITCH TACT SPST 7.8X7.8 |
| | | |
| | | |

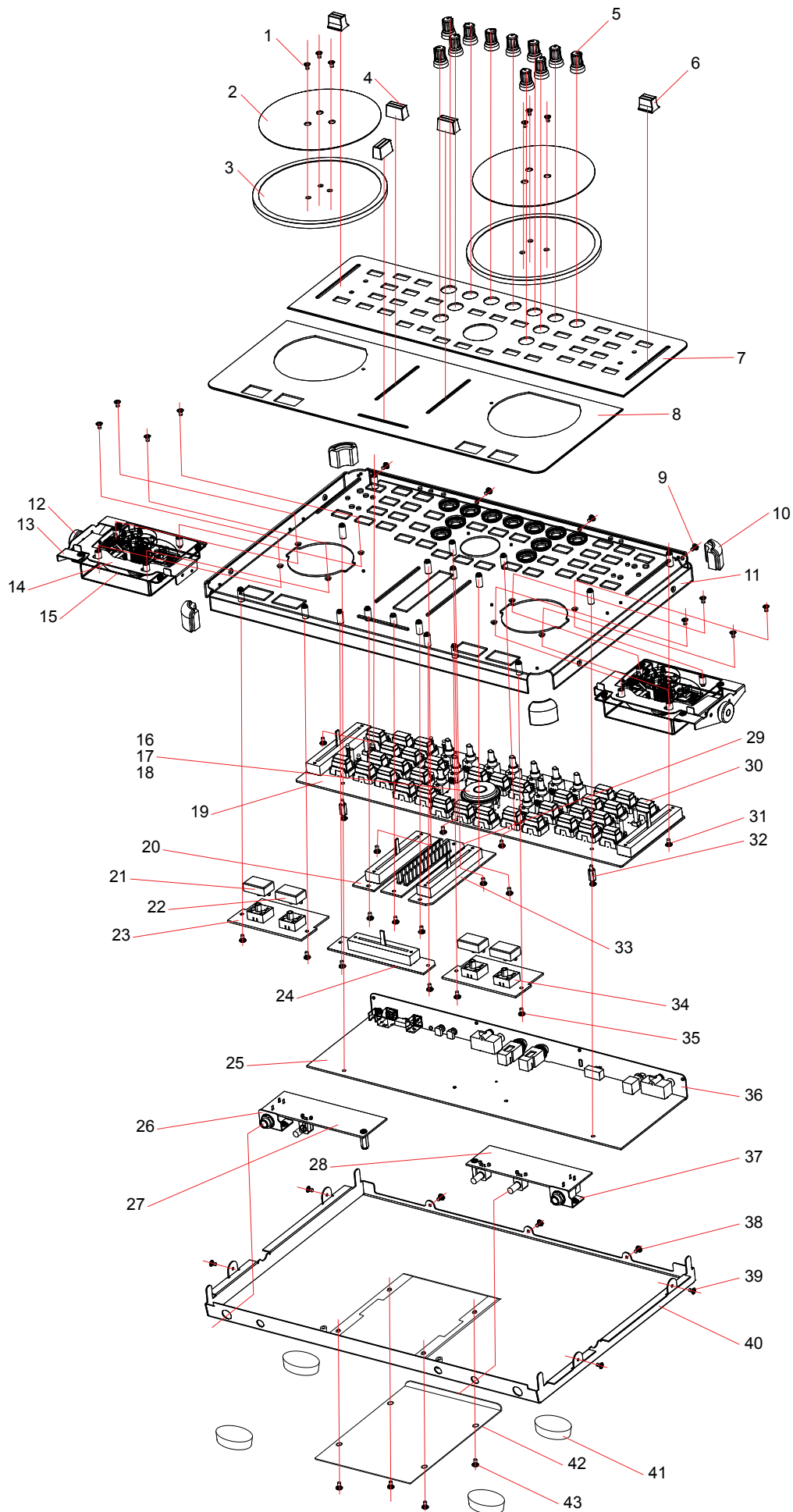
| Location | Part Number | Description |
|--|--------------------|--------------------------|
| PCB ASSY SWB JP | | |
| | PCB-200901+SWB | PCB ASSY SWB JP |
| PC BOARD | | |
| SECTION N | 1726-039A+0000 | PCB PANEL/TRAN/IFCF/MIC/ |
| WAFER/SOCKET | | |
| CN515B | 2102-060R+003 | WAFER 6 PIN P2.0 |
| RESISTOR | | |
| R563, R564, R574, R575 | 4705-331J+C | RCF 1/4W 330R 5% ATS |
| MISCELLANEOUS | | |
| LD529, LD530, LD665, LD666 | 3700-1648+B | LED SC 3X5.5X24 BL SUPER |
| SW500, SW501 | 5200-4979+0-01 | SWITCH TACT SPST 7.8X7.8 |
| PCB ASSY MCU JP | | |
| MCU | PCB-200901+MCU | PCB ASSY MCU JP |
| PC BOARD | | |
| PCB2 | 1725-978B+0001 | PCB MCU HAL PTH DS FR4 |
| CAPACITOR | | |
| C1 | 150E-104Z+P-AC | CC 25V 0.1UF +80/-20% |
| C100 | 150F-150J+P-AC | CC 50V 15P 5% 0603 |
| C101 | 157E-475M+3-GJ | CE 25V 4.7U 20% SMD |
| C108 | 157D-476M+3-LKC | CE 16V 47U 20% SMD 6.3X |
| C111, C112, C113, C114, C115, C116 | 150F-102K+P-AC | CC 50V 1000P 10% |
| C119, C120, C121, C122 | 157F-106M+3-IJY | CE 50V 10U 20% SM 5X5.5 |
| C127, C128 | 150f-100J+P-AC | CC 50V 10P 5% 0603 |
| C130, C131, C132, C133, C134, C135, C136, C137, C138, C139, C140, C141, C142, C143, C144, C145, C146, C147, C148, C149, C150, C151, C152 | 157D-106M+3-GJ | CE 16V 10U 20% SMD 4X5.4 |
| C158, C159 | 157F-106M+3-IJY | CE 50V 10U 20% SM 5X5.5 |
| C160, C161 | 150F-101J+P-AC | CC 50V 100P 5% 0603/1608 |
| C162, C163, C164, C165, C167, C168 | 150F-470J+P-AC | CC 50V 47P 5% 0603 1x2 |
| C170, C171, C172, C173, C174, C175, C176 | 157D-106M+3-GJ | CE 16V 10U 20% SMD 4X5.4 |
| C177, C178 | 150F-470J+P-AC | CC 50V 47P 5% 0603 1x2 |
| C182 | 150F-473K+P-AC | CC 50V 0.047uF 10% 0603 |
| C187, C188, C189, C190, C191, C192, C193, C194, C195, C197, C198, C199, C200 | 150E-104Z+P-AC | CC 25V 0.1UF +80/-20% |
| C201, C202, C203, C204, C205 | 150F-102K+P-AC | CC 50V 1000P 10% |
| C206, C207 | 150F-470J+P-AC | CC 50V 47P 5% 0603 1x2 |
| C208, C209 | 150F-330J+P-AC | CC 50V 33P 5% 0603/1608 |
| C21 | 150E-104Z+P-AC | CC 25V 0.1UF +80/-20% |
| C210 | 150F-101J+P-AC | CC 50V 100P 5% 0603/1608 |
| C25, C26, C27, C28, C29, C30, C32, C33, C34, C36, C37, C39, C40, C41, C43, C44, C45, C46, C47, C48, C49 | 150E-104Z+P-AC | CC 25V 0.1UF +80/-20% |
| C52, C57, C58 | 157C-107M+3-LJ | CE 10V 100uF 20% SM |
| C60 | 157D-107M+3-MJ | CE 16V 100uF 20% SM |
| C61, C74 | 157C-107M+3-LJ | CE 10V 100uF 20% SM |
| C75, C76 | 150F-103M+P-AC | CC 50V 0.01U 20% |
| C800, C801, C802, C803 | 150F-104J+P-AC | CC 50V 0.1U 5% 0603 |

| Location | Part Number | Description |
|---|--------------------|--------------------------|
| C900, C901 | 150E-104Z+P-AC | CC 25V 0.1UF +80/-20% |
| C902, C903 | 150F-104K+P-AC | CC 50V 0.1uF 10% |
| C904 | 150F-101J+P-AC | CC 50V 100P 5% 0603/1608 |
| C905 | 150F-473K+P-AC | CC 50V 0.047uF 10% 0603 |
| C906, C907 | 157E-337M+3-OSC | CE 25V 330U 20% 8X10 |
| C908 | 150F-471J+P-AC | CC 50V 470P 5% 0603 |
| C909, C910 | 150F-103M+P-AC | CC 50V 0.01U 20% |
| C911, C912 | 150E-104Z+P-AC | CC 25V 0.1UF +80/-20% |
| C93, C95, C96, C97, C98 | 150F-103M+P-AC | CC 50V 0.01U 20% |
| C99 | 150F-150J+P-AC | CC 50V 15P 5% 0603 |
| DIODE | | |
| D12, D16 | 480S-3520+3 | DIODE 1SS352(TPH3/F) SMD |
| D2 | 480S-3020+3 | DIODE 1SS302(TE85L/F) SM |
| D20, D22, D23 | 4800-51L0+6 | DIODE SCHOTTKY 40V 3A |
| D3 | 480S-3020+3 | DIODE 1SS302(TE85L/F) SM |
| D4, D5, D7, D8, D900, D901, D902, D903 | 480S-3520+3 | DIODE 1SS352(TPH3/F) SMD |
| D904, D905, D906 | 4800-51L0+6 | DIODE SCHOTTKY 40V 3A |
| WAFER/SOCKET | | |
| IC48 | 2101-1991+0 | 8 PIN IC SOCKET DIP |
| JACK/SOCKET | | |
| J21, J22 | 2113-1955+0 | PHONE JACK ST 6.35MM |
| J24 | 2113-3212+0 | JACK USB 4P 90DEG |
| JK2 | 2113-1730+0 | DC POWER JACK 50V 3A |
| TRANSISTOR | | |
| Q1, Q12, Q13, Q14, Q3 | 4854-YUA0+3 | TR NPN DTC114YUA HFE: -1 |
| Q4 | 4860-1890+3 | TR NPN 2SC3326 |
| Q904 | 4854-YUA0+3 | TR NPN DTC114YUA HFE: -1 |
| RESISTOR | | |
| R902, R903, R904, R905, R906, R907, R908, R909, R910 | 4723-000J+P-R | RMG 1/16W 0R 5% 0603 |
| R161, R235, R236, R237, R238, R239 | 4723-100J+P-R | RMG 1/16W 10R 5% 0603 |
| R117, R118, R119, R120, R121, R122, R123, R126, R127, R128, R129, R130, R131, R132, R133, R134, R135, R136, R137, R138, R139, R140, R141, R142, R143, R144, R145, R146, R147 | 4723-101J+P-R | RMG 1/16W 100R 5% 0603 |
| R162, R163, R164, R165, R166, R167, R943, R159, R160 | 4723-102J+P-R | RMG 1/16W 1K 5% 0603 |
| R100, R101, R106, R107, R108, R109, R110, R111, R111, R114, R115, R116, R13, R2, R21, R22, R228, R23, R231, R24, R27, R33, R7, R8, R80, R81, R82, R83, R84, R85, R87, R88, R913, R92, R941, R942, R946, R95, R96, R97, R98, R99 | 4723-103J+P-R | RMG 1/16W 10K 5% 0603 |
| R178, R179, R180, R181, R182, R183, R186, R187, R188, R935, R936, R937, R938, R939, R940 | 4723-104J+P-R | RMG 1/16W 100K 5% 0603 |
| R217, R222, R223, R224, R225, R226, R227 | 4723-151J+P-R | RMG 1/16W 150R 5% 0603 |
| R242 | 4723-152J+P-R | RMG 1/16W 1.5K 5% 0603 |
| R928 | 4723-181J+P-R | RMG 1/16W 180R 5% 0603 |
| R920, R922 | 4723-183J+P-R | RMG 1/16W 18K 5% 0603 |
| R171 | 4723-222J+P-R | RMG 1/16W 2.2K 5% 0603 |
| R193, R194, R195, R196, R197, R198, R912 | 4723-223J+P-R | RMG 1/16W 22K 5% 0603 |
| R915, R916, R917, R918, R919, R921 | 4723-273J+P-R | RMG 1/16W 27K 5% 0603 |
| R929, R930, R931 | 4723-332A+P-R | RMG 1/16W 3.3K 1% 0603 |
| R213 | 4723-392J+P-R | RMG 1/16W 3.9K 5% 0603 |

| Location | Part Number | Description |
|--|--------------------|--------------------------|
| R207, R208, R209, R210 | 4723-393J+P-R | RMG 1/16W 39K 5% 0603 |
| R11, R3, R5, R9 | 4723-471J+P-R | RMG 1/16W 470R 5% 0603 |
| R168 | 4723-472J+P-R | RMG 1/16W 4.7K 5% 0603 |
| R200, R202, R923 | 4723-473J+P-R | RMG 1/16W 47K 5% 0603 |
| R944, R945 | 4723-474J+P-R | RMG 1/16W 470K 5% 0603 |
| R204, R206 | 4723-563J+P-R | RMG 1/16W 56K 5% 0603 |
| R10 | 4723-331j+p-r | RMG 1/16W 330R 5% 0603 |
| R12 | 4723-331j+p-r | RMG 1/16W 330R 5% 0603 |
| R150, R151, R152, R153, R155, R156, R158 | 4723-105J+P | RMG 1/16W 1M 5% |
| R159, R160 | 4723-102J+P-R | RMG 1/16W 1K 5% 0603 |
| R240, R241 | 4723-270A+P | RMG 1/16W 27R 1% 0603 |
| R243 | 4723-302A+P | RMG 1/16W 3K 1% 0603 |
| R244 | 4723-121A+P-R | RMG 1/16W 120R 1% 0603 |
| R4 | 4723-331j+p-r | RMG 1/16W 330R 5% 0603 |
| R6 | 4723-331j+p-r | RMG 1/16W 330R 5% 0603 |
| R914 | 4723-105J+P | RMG 1/16W 1M 5% |
| R932, R933, R934 | 4723-102A+P | RMG 1/16W 1K 1% |
| | | |
| IC | | |
| IC10 | 3132-2501+0 | IC LM358AM OPAMP SO-8 |
| IC12 | 3131-9820+0 | IC S80840CNUA-E8Z-T2G |
| IC34, IC35, IC36 | 3131-4850+0 | IC NJM5532M-#ZZZB |
| | | |
| VR/SVR | | |
| VR12 | 4751-1729+0 | VR ROTARY A50KX2 20% H |
| VR5, VR6 | 4751-1689+0 | VR ROTARY B10KX1 20% H |
| | | |
| MISCELLANEOUS | | |
| CN10A, CN11A | 2101-3244+0 | WAFER 3P P2.0 RA SMD M |
| CN12A | 2101-3245+0 | WAFER 6P P2.0 ST SMD M |
| CN13A | 2101-3246+0 | WAFER 5P P2.0 ST SMD M |
| CN14A, CN15A, CN16A | 2101-3239+0 | WAFER 4P P2.0 RA SMD M |
| CN17A | 2101-3238+0 | WAFER 13P P2.0 RA SMD M |
| CN18A, CN19A | 2101-3244+0 | WAFER 3P P2.0 RA SMD M |
| CN1A | 2101-3239+0 | WAFER 4P P2.0 RA SMD M |
| CN20A, CN21A | 2101-3244+0 | WAFER 3P P2.0 RA SMD M |
| CN2A | 2101-3239+0 | WAFER 4P P2.0 RA SMD M |
| CN3A, CN4A | 2101-3242+0 | WAFER 2P P2.0 RA SMD M |
| CN5A | 2101-3239+0 | WAFER 4P P2.0 RA SMD M |
| CN6A | 2101-3243+0 | WAFER 6P P2.0 RA SMD M |
| CN7A | 2101-3240+0 | WAFER 15P P2.0 RA SMD M |
| CN8A, CN900 | 2101-3241+0 | WAFER 8P P2.0 RA SMD M |
| CN9A | 2101-3242+0 | WAFER 2P P2.0 RA SMD M |
| HA1A, HA1B | 7013-0331+0 | WIRE-CONN 4P P2.0 #28 |
| HA2 | 7013-0332+0 | WIRE-CONN 4P P2.0 #28 |
| HA3 | 7013-0330+0 | WIRE-CONN 4P P2.0 #28 |
| HA4 | 7013-0470+0 | WIRE-CONN 3P P2.0 #28 |
| HA5 | 7013-0471+0 | WIRE-CONN 3P P2.0 #28 |
| IC1 | 3132-1831+0 | IC TC74VHC74FT FLIP FLOP |
| IC13 | 3132-7091+0-28 | IC MCU HD64F3684FP |
| IC19 | 3132-0160+0 | IC UPC29M33T-E1-AZ REG |
| IC2 | 3132-1831+0 | IC TC74VHC74FT FLIP FLOP |

| Location | Part Number | Description |
|------------------------------|--------------------|--------------------------|
| IC26 | 3132-0160+0 | IC UPC29M33T-E1-AZ REG |
| IC3 | 3132-7260+0-20 | IC ASIC TC74VHC08FT |
| IC30 | 3132-7310+0 | IC REGULATOR NJM7805DLA |
| IC32, IC33 | 3131-8102+0-33 | IC ASIC NJM2100M DMP8 |
| IC37 | 3132-7270+0-33 | IC ASIC NJM4556M DMP8 |
| IC40, IC41 | 3132-7070+0-41 | IC ASIC AK4556VT TSSOP |
| IC46 | 3132-7060+0-01 | IC REGULATOR ADM708TARZ |
| IC47 | 3132-7031+0-40 | IC MCU TUSB3200A TQFP |
| IC48-1 | 3132-7320+0-29 | IC MEMORY 24LC128 I/P |
| IC9 | 3132-7250+0-20 | IC ASIC TC74VHC04FT |
| IC900, IC901 | 3132-7180+0 | IC ASIC TC74VHC14FT |
| IC902, IC903 | 3132-4041+0 | IC DC-DC CONVERTER SMD |
| IC904 | 3132-8211+0 | IC ASIC AIC1526-0GS |
| IC905 | 3132-8201+0 | IC ASIC TC4053BFT |
| IC906, IC907 | 3132-8191+0 | IC ASIC TC4051BFT |
| J19, J20 | 2113-3323+0 | JACK RCA 2P P14 50V 1A |
| JP1 | 2101-3169+0 | HEADER 3P P2.54 STRAIGHT |
| L10, L11, L6, L7, L8, L9 | 2705-0190+0 | EMI FILTER 200MA 600R |
| L900, L901 | 1805-0050+0 | CHOKE COIL 220UH 20% 1A |
| L904 | 1805-0060+0 | CHOKE COMMON MODE 1MH |
| Label | 3002-0027+0 | LABEL-BLANK 10X5 WHT PET |
| Q6, Q7, Q9, Q900, Q901, Q902 | 490K-8800+3 | JFET N-CH -50V MIN 1.2MA |
| Q903 | 4854-1160+3 | TR NPN 2SC4116 240 USM-3 |
| Q905 | 490K-8800+3 | JFET N-CH -50V MIN 1.2MA |
| R900, R901 | 4720-5R1J+P | RMG 1/10W 5.1R 5% 0603 |
| R926, R927 | 4727-R22J+W | RMG 1/2W 0.22R 5% 2010 |
| RIBBON, RIBBON-1 | 3005-5361+0 | RIBBON 60MMX300M BLACK |
| SOFTWARE | 312A-0940+00 | SOFTWARE MCU A |
| SOFTWARE | 312A-1070+00 | SOFTWARE EEPROM D |
| SPK | 8910-0273+0 | POLYSWITCH 0.15 ohm 1.1A |
| SW2 | 5200-5007+0-19 | SWITCH SLIDE 3P2T DC28V |
| SW3 | 5200-4977+0-01 | SWITCH SLIDE 4P2T L=6 |
| T1 | 4132-6221+0 | BRACKET GROUNDING |
| VARIS | 4735-0009+0 | VARISTOR 22V 7X4.5X10 |
| X1 | 2300-3319+0 | CRYSTAL 20MHZ +/-50PPM |
| X3 | 2300-3320+0 | CRYSTAL 6MHZ +/-50PPM |

EXPLODED VIEW • PARTS LIST



| ITEM | P/N | DESCRIPTION | Q'TY |
|------|-----------------|---|------|
| 1 | 2901-3008+3000 | M3X8 C'SINK (BLK) | 6 |
| 2 | 4135-8733+0 | PLATE-DISC TOP AL | 2 |
| 3 | 4155-3581+1 | PLATTER-TOP PMMA | 2 |
| 4 | 2444-5205+2 | KNOB-FADER H=12 SILVER | 3 |
| 5 | 2446-6726+0 | KNOB-ROTARY D-SHAFT 180D | 11 |
| 6 | 2446-8401+0 | KNOB FINE PITCH | 2 |
| 7 | 1468-5204+0 | PLATE-TOP PMMA | 1 |
| 8 | 1468-5105+0 | PLATE-BOTTOM PMMA | 1 |
| 9 | 2904-3006+3000 | SCREW M3X6 BIND | 4 |
| 10 | 4157-1511+0 | RUBBER CORNER PAD | 4 |
| 11 | 1407-0002+0 | PANEL-TOP AL5052P T=1.5 | 1 |
| 12 | 2445-3701+0 | KNOB-BRAKE D20X10.4 AL | 2 |
| 13 | 4135-8751+0 | BRACKET-BRAKE SECC T1.0 | 2 |
| 14 | 4135-8741+0 | PLATE-BRAKE SECC | 2 |
| 15 | SS-2002P04+JOG | CASING ASSY VCI JOG | 2 |
| 16 | 2445-3401+0 | BUTTON-ANNULAR 36X36X4.93 AL SIL | 1 |
| 17 | 2445-3501+0 | BUTTON-CENTER 13.4X13.4X7.54 AL SIL | 1 |
| 18 | 4155-3491+0 | BRACKET-BUTTON ABS BLACK | 1 |
| 19 | PCB-200901+PANE | PCB ASSY PANEL | 1 |
| 20 | PCB-200901+LFA | PCB ASSY LFA | 1 |
| 21 | 2447-8003+0 | BUTTON-CUE 24X15 PC | 2 |
| 22 | 2447-8004+0 | BUTTON-PLAY 24X15 PC | 2 |
| 23 | PCB-200901+SWB | PCB ASSY SWB | 2 |
| 24 | PCB-200901+CF | PCB ASSY CROSS FADER | 1 |
| 25 | PCB-200901+MCU | PCB ASSY MCU | 1 |
| 26 | 4135-8711+0 | BRACKET-JACK SECC | 1 |
| 27 | PCB-200901+MIC | PCB ASSY MIC | 1 |
| 28 | PCB-200901+IFCF | PCB ASSY IFCF | 1 |
| 29 | PCB-200901+LEV | PCB ASSY LEVEL | 1 |
| 30 | 2447-7801+0 | BUTTON-ILLUMINATE 2 POLE 16.8X23.6X21.6 PP MILKIN | 34 |
| 31 | 2904-3006+3000 | SCREW M3X6 BIND | 2 |
| 32 | 4135-8811+0 | SPACER-PCB M3X14 BRASS NATURAL | 2 |
| 33 | PCB-200901+LFB | PCB ASSY LFB | 1 |
| 34 | 4155-3641+0 | GUIDER-BUTTON POM NATURAL | 4 |
| 35 | 2904-3006+3000 | SCREW M3X6 BIND | 14 |
| 36 | 1407-0203+1 | PANEL-REAR | 1 |
| 37 | 4135-8711+0 | BRACKET-JACK SECC | 1 |
| 38 | 2904-3006+3000 | SCREW M3X6 BIND | 3 |
| 39 | 2901-3008+3000 | M3X8 C'SINK (BLK) | 4 |
| 40 | 1407-0102+1 | CHASSIS-BOTTOM | 1 |
| 41 | 4157-1681+0 | RUBBER FOOT D14.5X3 | 4 |
| 42 | 1407-4301+0 | COVER BOTTOM SECC T=1 | 1 |
| 43 | 2901-3008+3000 | M3X8 C'SINK (BLK) | 4 |

Vestax Corporation

Vestax Corporation

1-18-6 Wakabayashi, Setagaya-ku, Tokyo 154-0023 Japan
Phone 03-3412-7011 Fax 03-3412-7013
Web : www.vestax.com

Vestax Europe Technical Support

Rheinstr.213 D-53332 Bornheim Germany
Phone 49(0)2222-95-23-72 Fax 49(0)2222-95-23-74